

Cisco

Exam Questions 350-601

Implementing and Operating Cisco Data Center Core Technologies



NEW QUESTION 1

Refer to the exhibit

```
#!/bin/bash
### BEGIN INIT INFO
# Provides:          capture
# Required-Start:    $local_fs $network $named $time $syslog
# Required-Stop:     $local_fs $network $named $time $syslog
# Description:       Continuous capture script
### END INIT INFO

start() {
    tcpdump -W 3 -C 100 -i Eth1-42 -w /tmp/capture.pcap &
    RETVAL=$?
}

stop() {
    killall -9 tcpdump
    RETVAL=$?
}

case "$1" in
    start)
        start
        ;;
    stop)
        stop
        ;;
    *)
        echo "Usage: $0 {start|stop}"
        RETVAL=2
esac

exit $RETVAL
```

A network engineer must run a continuous capture on a port. A script called "capture" is created to start and stop the capture task. Which command sequence makes the capture persistent after a reboot?

- ☐ initctl add capture
initctl init capture
- ☐ chkconfig --add capture
chkconfig --level 3 capture
- ☐ systemctl enable capture
systemctl start capture
- ☐ run bash /etc/init.d/capture
run bash start-stop-daemon

- A. Option A
- B. Option B
- C. Option C
- D. Option D

Answer: C

NEW QUESTION 2

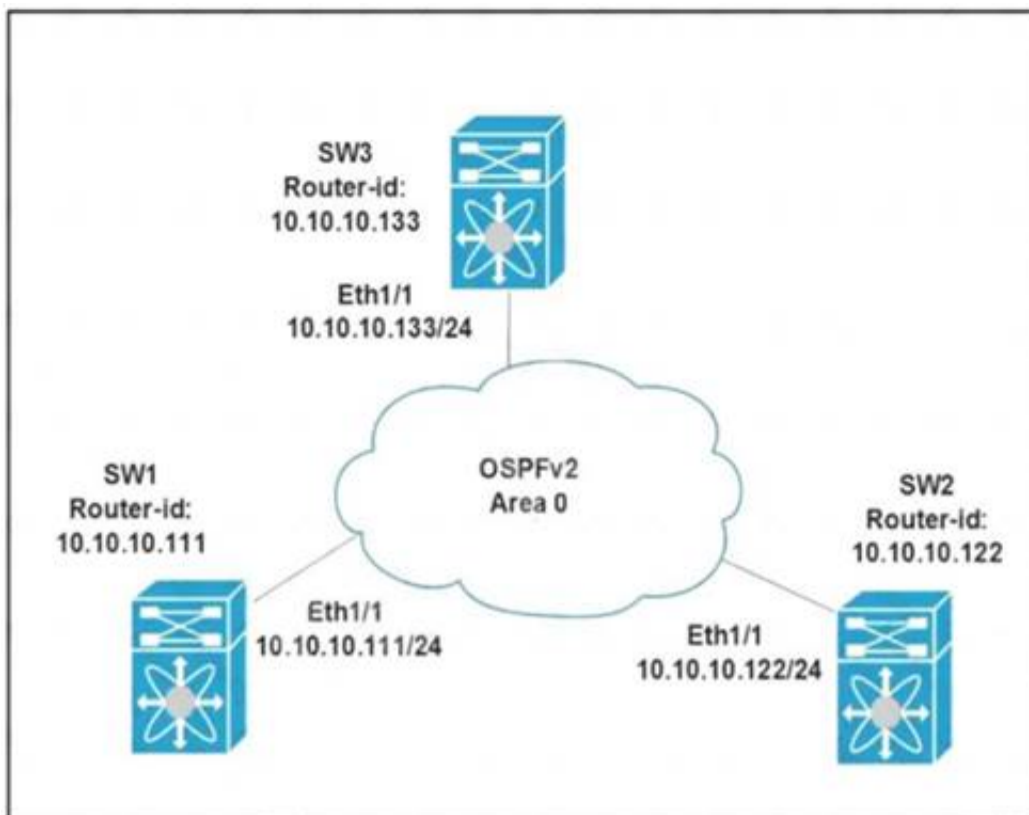
A company is investigating different options for IT automation tools. The IT team has experience with python programming language and scripting using a declarative language. The proposed tool should be easy to set up and should not require installing an agent on target devices. The team will also need to build custom modules based on the python programming language to extend the tools functionality. Which automation tool should be used to meet these requirements?

- A. Puppet
- B. Ansible
- C. NX-API
- D. Chef

Answer: B

NEW QUESTION 3

Refer to the exhibit.



All switches are configured with the default OSPF priority. Which configuration should be applied to ensure that the SW2 Cisco Nexus switch controls the LSA floods and advertises the network to the remaining nodes in the OSPFv2 area?

- A. SW2# configure terminal SW2 (config)# interface ethernet 1/1 SW2 (config-if)# ip ospf priority 255
- B. SW2# configure terminal SW2 (config)# interface ethernet 1/1 SW2 (config-if)# ip ospf priority 1
- C. SW2# configure terminal SW2 (config)# router ospf 1 SW2 (config-router)# router-id 10.10.10.22
- D. SW2# configure terminal SW2 (config)# interface ethernet 1/1 SW2 (config-if)# ip ospf priority 0

Answer: A

Explanation:

Priority in OSPF is mainly used to influence/determine a designated router/backup designated router for a network. By default, the priority is 1 on all routers. A router with a high priority will always win the DR/BDR election process.

NEW QUESTION 4

A network administrator is creating a custom Django self-service portal that runs on a Linux server to automate the creation of new VLANs on Cisco UCS Manager. Which feature must be installed and configured on the server?

- A. Cisco UCS PowerTool Suite
- B. Cisco DNA Center API
- C. Cisco AppDynamics
- D. Cisco UCS Python SDK

Answer: C

NEW QUESTION 5

Which two configuration settings are available in the Cisco UCS Firmware Auto Sync Server policy? (Choose two.)

- A. Immediate Action
- B. User Acknowledge
- C. No Action
- D. Delayed Action
- E. User Notification

Answer: BC

NEW QUESTION 6

A network engineer must SPAN only the ingress traffic of a Cisco MDS 9000 series switch from interface fc 1/23 to interface fc 1/24. Which two configuration must be applied to complete this task? (Choose two)

```

interface fc 1/24
-- output omitted --
no shutdown
span session 1
-- output omitted --
destination interface fc 1/24
  
```

- ☒ MDS-A(config-if)# switchport mode SD
- ☐ MDS-A(config-if)# switchport mode TL
- ☐ MDS-A(config-span)# source interface fc 1/23 rx
- ☐ MDS-A(config-span)# source interface fc 1/23
- ☐ MDS-A(config-span)# source interface fc 1/23 tx

- A. Option A
- B. Option B
- C. Option C
- D. Option D

Answer: AC

NEW QUESTION 7

A network administrator attempts to automate the provisioning of several new Cisco Nexus switches. The administrator prepares a bootstrap configuration script for the task. Due to the number of switches, a zero-touch provisioning solution is preferred. Additionally, some switches arrive with outdated software and should be automatically upgraded as part of the provisioning workflow. Which solution meets the requirements?

- A. DHCP
- B. Ansible
- C. NX-API
- D. POAP

Answer: C

NEW QUESTION 8

A network engineer needs to configure system logging on the MDS switch. The messages must be displayed with the severity level of "warning" and above. For security reasons, the users must be logged out of the console after 5 minutes of inactivity. Which configuration must be applied to meet these requirements?

- ☐ MDS-A(config)# logging console 5
MDS-A(config-console)# exec-timeout 300
- ☒ MDS-A(config)# line console
MDS-A(config-console)# speed 38400
MDS-A(config-console)# exec-timeout 5
MDS-A(config)# logging console 4
- ☐ MDS-A(config)# console
MDS-A(config-console)# speed 38400
MDS-A(config-console)# session-limit 5
MDS-A(config)# logging console 5
- ☐ MDS-A(config)# logging line 4
MDS-A(config-console)# session-limit 300

- A. Option A
- B. Option B
- C. Option C
- D. Option D

Answer: B

Explanation:

DETAILED STEPS

	Command or Action	Purpose
Step 1	configure terminal Example: switch# configure terminal switch(config)#	Enters global configuration mode.
Step 2	line console Example: switch# line console switch(config-console)#	Enters console configuration mode.
Step 3	databits <i>bits</i> Example: switch(config-console)# databits 7	Configures the number of data bits per byte. The range is from 5 to 8. The default is 8.
Step 4	exec-timeout <i>minutes</i> Example: switch(config-console)# exec-timeout 30	Configures the timeout for an inactive session. The range is from 0 to 525600 minutes (8760 hours). A value of 0 minutes disables the session timeout. The default is 30 minutes.

NEW QUESTION 9

After a Cisco Nexus 7000 Series Switch chassis replacement, the administrator discovers that all vPC-enabled LACP port channels are reinitialized. The administrator wants to prevent this issue the next time the chassis is replaced. Which two actions must be taken to meet this requirement before the isolated device is reloaded? (Choose two)

- A. Set the vPC MAC address to a lower value than the peer
- B. Change the vPC system-priority of the replacement chassis to a higher value than the peer if.
- C. Change the vPC system-priority of the replacement chassis to a lower value than the peer.
- D. Set the vPC MAC address to a higher value than the peer
- E. Configure auto-recovery to the disable state on both peers

Answer: BE

Explanation:

https://www.cisco.com/c/en/us/td/docs/switches/datacenter/nexus9000/sw/6-x/interfaces/configuration/guide/b_

<https://community.cisco.com/t5/networking-documents/vpc-auto-recovery-feature-in-nexus-7000/ta-p/3123651>

vPC and LACP

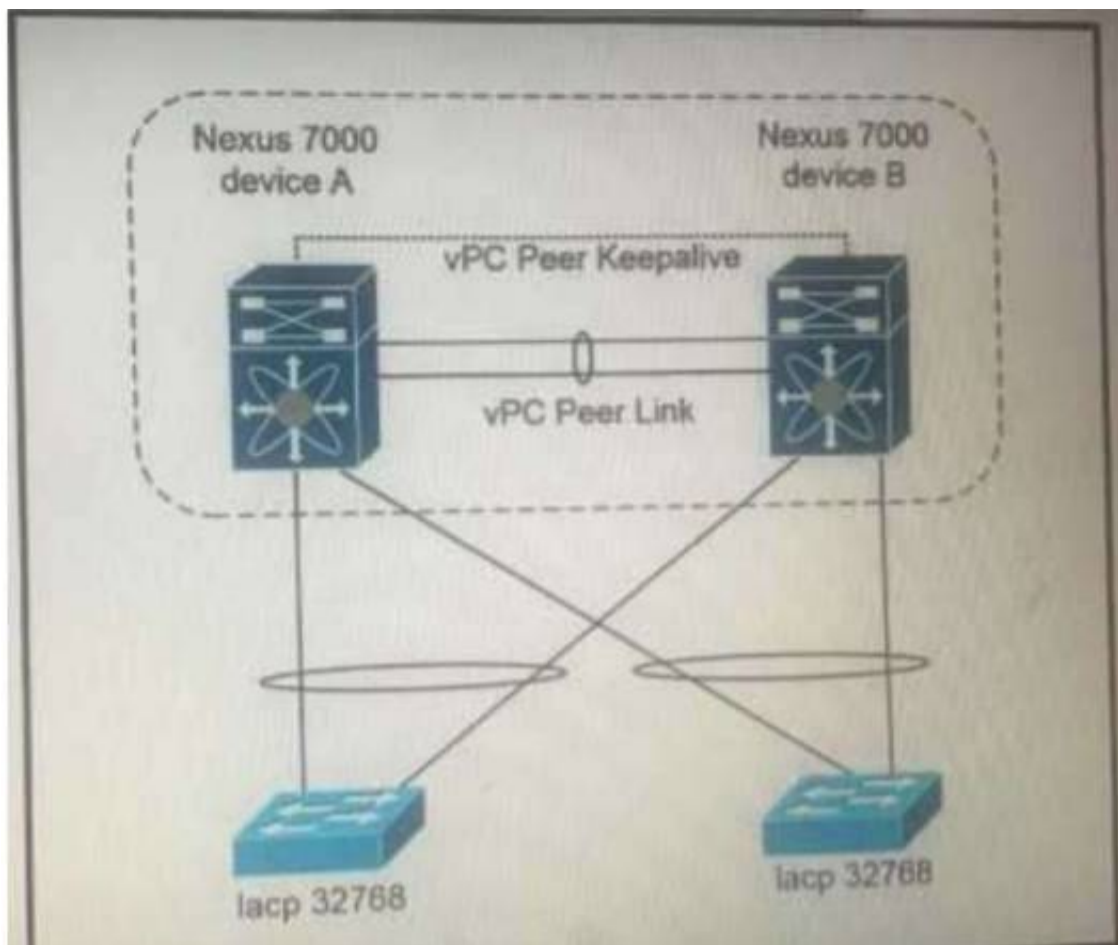
The Link Aggregation Control Protocol (LACP) uses the system MAC address of the vPC domain to form the LACP Aggregation Group (LAG) ID for the vPC.

You can use LACP on all the vPC EtherChannels, including those channels from the downstream switch. We recommend that you configure LACP with active mode on the interfaces on each EtherChannel on the vPC peer switches. This configuration allows you to more easily detect compatibility between switches, unidirectional links, and multihop connections, and provides dynamic reaction to run-time changes and link failures.

The vPC peer link supports 16 EtherChannel LACP interfaces. You should manually configure the system priority on the vPC peer-link switches to ensure that the vPC peer-link switches have a higher LACP priority than the downstream connected switches. A lower numerical value system priority means a higher LACP priority.

NEW QUESTION 10

Refer to the exhibit.



Which configuration ensure that the cisco Nexus 7000 series switches are the primary devices for LACP?

- A. `N7K_A(config-vpc-domain)# system-priority 4000`
`N7K_B(config-vpc-domain)# system-priority 4000`
- B. `N7K_A(config-vpc-domain)# system-priority 100`
`N7K_B(config-vpc-domain)# system-priority 200`
- C. `N7K_A(config-vpc-domain)# system-priority 32768`
`N7K_B(config-vpc-domain)# system-priority 32768`
- D. `N7K_A(config-vpc-domain)# role priority 1`
`N7K_B(config-vpc-domain)# role priority 2`

- A. Option A
 B. Option B
 C. Option C
 D. Option D

Answer: C

NEW QUESTION 10

An engineer needs to create a new user in the local user database on Cisco UCS Fabric Interconnect. The user needs permissions to change the following configuration inside UCS Manager version 3.1:

- vNIC and vHBA profiles
- Fan speed and power redundancy profile of UCS Manager

Which two roles must be assigned to a user to achieve this goal? (Choose two.)

- A. server-compute
 B. facility-manager
 C. operations
 D. server-equipment
 E. server-profile

Answer: AD

NEW QUESTION 15

Which two actions must be taken to directly connect a Fibre Channel storage array to a Cisco UCS domain? (Choose two.)

- A. Configure a new VSAN
 B. Create a new vHBA dedicated to the storage array
 C. Configure a Fibre Channel port channel
 D. Create a Storage Connection Policy
 E. Configure the Fibre Channel poet as a Fibre Channel storage port

Answer: AE

NEW QUESTION 20

Refer to the exhibit. A network engineer must Improve the convergence time during vPC primary peer device failure and recovery. Which set of actions is required on both vPC switches to accomplish this task?

- A. Option A
- B. Option B
- C. Option C
- D. Option D

Answer: D

NEW QUESTION 24

What is a benefit of Cisco HyperFlex All-Flash Stretched cluster deployment as compared to All-HDD Stretched cluster deployment?

- A. lower cost
- B. lower number of IOPS
- C. higher cost
- D. higher number of IOPS

Answer: D

NEW QUESTION 26

An engineer is configuring AAA authentication on an MDS 9000 switch. The LDAP server is located under the IP 10.10.2.2. The data sent to the LDAP server should be encrypted. Which command should be used to meet these requirements?

- A. ldap-server host 10.10.2.2 enable-ssl
- B. ldap-server 10.10.2.2 port 443
- C. ldap server host 10.10.2.2 key SSL_KEY
- D. ldap-server 10.10.2.2 key SSL_KEY

Answer: A

NEW QUESTION 29

Refer to the exhibit.

```
Enter the configuration method. (console/gui) ? console

Enter the setup mode; setup newly or restore from backup.
(setup/restore) ? restore

NOTE:
  To configure Fabric interconnect using a backup file on
a remote server, you will need to setup management
interface.
  The management interface will be re-configured (if
necessary), based on information stored in the backup file.

Continue to restore this Fabric interconnect from a backup
file (yes/no) ? yes

Physical Switch Mgmt0 IPv4 address : 192.168.10.10
Physical Switch Mgmt0 IPv4 netmask : 255.255.255.0
IPv4 address of the default gateway : 192.168.10.1
Enter the protocol to get backup file (scp/ftp/tftp/sftp)
? scp
Enter the IP address of backup server: 20.10.20.10
Enter fully qualified backup file name: Backup.bak
Enter user ID: user
Enter password:
  Retrieved backup configuration file.
Configuration file - Ok
```

Which type of backup is required to restore a Cisco UCS configuration?

- A. system configuration
- B. all configuration
- C. logical configuration
- D. full state

Answer: A

Explanation:

https://www.cisco.com/c/en/us/td/docs/unified_computing/ucs/sw/cli/config/guide/1-0-2/b_CLI_Config_Guide_

The following example restores a system configuration from the Backup.bak file, which was retrieved from the 20.10.20.10 backup server using FTP:

```
Enter the configuration method. (console/gui) ? console

Enter the setup mode; setup newly or restore from backup. (setup/restore) ? restore

NOTE:
  To configure Fabric interconnect using a backup file on a remote server,
  you will need to setup management interface.
  The management interface will be re-configured (if necessary),
  based on information stored in the backup file.

Continue to restore this Fabric interconnect from a backup file (yes/no) ? yes

Physical Switch Mgmt0 IPv4 address : 192.168.10.10

Physical Switch Mgmt0 IPv4 netmask : 255.255.255.0

IPv4 address of the default gateway : 192.168.10.1

Enter the protocol to get backup file (scp/ftp/tftp/sftp) ? scp
Enter the IP address of backup server: 20.10.20.10
Enter fully qualified backup file name: Backup.bak
Enter user ID: user
Enter password:
  Retrieved backup configuration file.
Configuration file - Ok
```

```
Cisco UCS 6100 Series Fabric Interconnect
UCS-A login:
```

NEW QUESTION 32

An engineer must configure a Cisco MDS 9000 Series Switch for traffic analysis from the storage array. The storage array is connected to the interface fc2/1 in VSAN 10 and the traffic analyzer to fc4/2. The capture file must include ingress and egress traffic between the switch and the storage array. Also, only traffic in VSAN 10 must be captured. Which configuration set meets these requirements?

A)

```
interface fc4/2
  switchport mode auto
  no shutdown
!
span session 1
  source interface fc2/1 rx
  destination interface fc4/2
  source filter vsan 10
  no suspend
```

B)

```
interface fc4/2
  switchport mode trunk
  switchport trunk allow vsan 10
  no shutdown
!
span session 1
  source interface fc2/1 tx
  destination interface fc4/2 rx
  no suspend
```

C)

```
interface fc4/2
  switchport mode SD
  no shutdown
!
span session 1
  source interface fc2/1
  destination interface fc4/2
  source filter vsan 10
```

D)

```
interface fc4/2
  switchport mode ST
  no shutdown
!
span session 1
  source interface fc2/1
  destination interface fc4/2
  source filter vsan 10
```

- A. Option A
- B. Option B
- C. Option C
- D. Option D

Answer: A

NEW QUESTION 35

A network engineer must enable port security on all cisco MDS series switches in the fabric. The requirement is to avoid the extensive manual configuration of the switch ports. Which action must be taken to meet these requirements?

- A. Activate CFS distribution and the auto-learning port security feature.
- B. Activate CFS distribution and file auto-learning port security feature on a per-VSAN basis.
- C. Enable the auto-learning port security feature on a per-VSAN basis.
- D. Enable the auto-learning port security feature.

Answer: B

Explanation:

You can instruct the switch to automatically learn (auto-learn) the port security configurations over a specified period. This feature allows any switch in the Cisco MDS 9000 Family to automatically learn about devices and switches that connect to it. Use this feature when you activate the port security feature for the first time as it saves tedious manual configuration for each port. You must configure auto-learning on a per-VSAN basis.

https://www.cisco.com/en/US/docs/storage/san_switches/mds9000/sw/rel_3_x/configuration/guides/fm_3_3_1/p

NEW QUESTION 38

What occurs when running the command `install deactivate <filename>` while a software maintenance upgrade is performed on a Cisco Nexus 9000 Series switch?

- A. The current set of packages is committed.
- B. The package is removed from the switch.
- C. The package features for the line card are disabled.
- D. The current upgrade stops.

Answer: C

NEW QUESTION 43

An engineer deploys a new Cisco Nexus 5000 Series Switch in an existing environment with strict security policies. The new device should meet these requirements:

- Secure end-user ports with minimum configuration effort.
- Log security breaches and require manual recovery.
- Retain the switch configuration if the device restarts.

Which configuration must be used?

A.

switchport port-security
 switchport port-security max 1
 switchport port-security violation shutdown

B. switchport port-security
 switchport port-security violation shutdown
 switchport port-security mac-address dynamic

C. switchport port-security
 switchport port-security max 1
 switchport port-security mac-address sticky

D. switchport port-security
 switchport port-security violation restrict
 switchport port-security mac-address sticky

Answer: C

NEW QUESTION 45

Drag and drop the network assurance concepts from the left onto the corresponding benefits on the right.

Cisco Tetration	allows close to real-time data monitoring
Data Management Engine	confirms that the network operates consistently with business requirements
Cisco Network Assurance Engine	offers overall protection and enables analysis of the network in real time to identify security incidents faster
Streaming Telemetry	allows the characteristics to be presented as object properties

- A. Mastered
 B. Not Mastered

Answer: A

Explanation:

Diagram Description automatically generated

NEW QUESTION 50

Which two actions are needed to configure a single Cisco APIC controller for Cisco ACI fabric for the first time? (Choose two.)

- A. Register the APIC that is connected to the switch.
 B. Configure the first Cisco APIC controller
 C. Configure the leaf switch where the Cisco APIC is connected, using CLI to allow APIC connectivity
 D. Register the switches that are discovered through LLDP.
 E. Register all leaf and spine switches

Answer: AE

NEW QUESTION 54

A network engineer must prevent data corruption due to cross fabric communication in an FCoE environment. Which configuration must be applied to the Cisco Nexus Unified Switches to achieve this objective?

- A. Switch(config)#fcoe fcmapi 0e,fc,2a
 B. Switch(config-if)# no fcoe fcf-priority 0
 C. Switch(config-if) # shutdown lan
 D. Switch(config) # no fcoe fcf-priority

Answer: A

Explanation:

2. switch(config)# **fcoe fcmmap fabric-map**
3. (Optional) switch(config)# **no fcoe fcmmap fabric-map**

DETAILED STEPS

	Command or Action	Purpose
Step 1	switch# configure terminal	Enters configuration mode.
Step 2	switch(config)# fcoe fcmmap fabric-map	Configures the global FC-Map. The default value is 0E.FC.00. The range is from 0E.FC.00 to 0E.FC.FF.
Step 3	switch(config)# no fcoe fcmmap fabric-map	(Optional) Resets the global FC-Map to the default value of 0E.FC.00.

This example shows how to configure the global FC-Map:

```
switch# configure terminal
```

```
switch(config)# fcoe fcmmap 0e.fc.2a
```

https://www.cisco.com/c/en/us/td/docs/switches/datacenter/nexus5000/sw/fcoe/b_Cisco_Nexus_5000_Series_NX-OS_Fibre_Channel_over_Ethernet_Configuration_Guide/Cisco_Nexus_5000_Series_NX-OS_Fibre_Channel_over_Ethernet_Configuration_Guide_chapter3.html
You can prevent data corruption due to cross-fabric talk by configuring an FC-Map that identifies the Fibre Channel fabric for this Cisco Nexus device. When the FC-Map is configured, the switch discards the MAC addresses that are not part of the current fabric.
switch(config)# fcoe fcmmap fabric-map Configures the global FC-Map. The default value is 0E.FC.00. The range is from 0E.FC.00 to 0E.FC.FF.
https://www.cisco.com/c/en/us/td/docs/switches/datacenter/nexus5000/sw/fcoe/513_n1_1/b_Cisco_n5k_fcoe_co

NEW QUESTION 56

A customer deploys a media server to distribute streaming videos to network clients. The requirement is to allow the video feed to reach only requesting clients. The shared trees must not propagate the video feed if no clients from that tree request it. To reduce configuration touchpoints, the solution must support the automatic discovery and announcement of RP-set information. Each router in the network is responsible for selecting the RP. Which configuration set meets these requirements?

A)

```
router(config-if)# ip pim bidir-enable  
router(config)# ip pim ssm default  
router(config)# ip igmp version 3
```

B)

```
router(config-if)# ip pim dense-mode  
router(config)# ip pim rp-address 1.1.1.1  
router(config)# ip pim rp listener
```

C)

```
router(config-if)# ip pim sparse mode  
router(config)# ip pim bsr-candidate Lo0  
router(config)# ip pim rp-candidate Lo0
```

D)

```
router(config-if)# ip pim sparse-sense mode  
router(config)# ip pim auto-rp  
router(config)# ip pim send-rp-announce
```

- A. Option A
- B. Option B
- C. Option C
- D. Option D

Answer: D

NEW QUESTION 57

A network engineer must deploy a configuration backup policy to the Cisco UCS Manager. The file generated from this backup must have a snapshot of the entire system that should be used to restore the system during disaster recovery. The backup file must be transferred insecurely by using the TCP protocol. Which configuration backup settings meet these requirements?

- A. Type: All Configuration Protocol: SCP
- B. Type: Logical Configuration Protocol: SFTP
- C. Type: Full State Protocol: FTP
- D. Type: System Configuration Protocol: TFTP

Answer: C

NEW QUESTION 61

Which two statements describe the process of upgrading an EPLD on a Cisco MUS 9000 Series Switch? (Choose two)

- A. EPLDs are capable to be upgraded without replacing the hardware
- B. The CPLDs for all the modules on a switch must be upgraded at the same time
- C. An upgrade verification identifies the impact of each EPLD upgrade
- D. EPLDs are only capable to be upgraded to the latest F
- E. D image
- F. EPLD upgrades are capable to be completed without powering down the module during the upgrade

Answer: AC

NEW QUESTION 62

When a strict CoPP policy is implemented, which statement describes an event during which packets are dropped?

- A. Fifteen SSH sessions remain connected to the switch.
- B. A large system image is copied to a switch by using the default VRF.
- C. A ping sweep is performed on a network that is connected through a switch.
- D. A web server that is connected to a switch is affected by a DDoS attack.

Answer: B

Explanation:

A large image upload is more probable to generate that level of traffic.

15 SSH session would mean an average of 200pps per session, and they simply mention that the session remain connected, if there are no inputs in them they have 0pps and even a full config push would probably not require 200 packets total.

class copp-system-p-class-management set cos 2

police cir 3000 pps bc 32 packets conform transmit violate drop

https://www.cisco.com/c/en/us/td/docs/switches/datacenter/nexus9000/sw/6-x/security/configuration/guide/b_Cisco_Nexus_9000_Series_NX-OS_Security_Configuration_Guide/b_Cisco_Nexus_9000_Series_NXOS_Security_Configuration_Guide_chapter_010001.html

NEW QUESTION 66

An engineer must configure OSPF in the data center. The external routes have already been redistributed OSPF. The network must meet these criteria:

* The data centre servers must reach services in the cloud and the services behind the redistributed routes.

* The exit point toward the internet should be propagated only when there is a dynamically learned default route from the upstream router.

Which feature is required?

- A. Default-information originate
- B. Stubby area
- C. Totally stubby area
- D. Default-information originate always

Answer: A

Explanation:

<https://learningnetwork.cisco.com/s/question/0D53i00000Kt544/defaultinformationoriginate-always>

NEW QUESTION 68

An engineer must add a new VRF (DC DC) to the network that runs with Multiprotocol Border Gateway Protocol (MP-BGP) and EVPN. The requirement for the new VRF is to allow communication of network

prefixes between PE1 and PE2. Which two sets of steps should be taken to complete the VRF configuration? (Choose two)



- A. Option A
- B. Option B
- C. Option C
- D. Option D
- E. Option E

Answer: DE

NEW QUESTION 70

Which two firmware packages are included in the Cisco UCS C-Series Rack-Mount UCS-Managed Server Software bundle? (Choose two.)

- A. system
- B. third-party
- C. PSU
- D. CIMC
- E. BIOS

Answer: DE

Explanation:

https://www.cisco.com/c/en/us/td/docs/unified_computing/ucs/ucs-manager/GUI-User-Guides/Firmware-Mgmt/

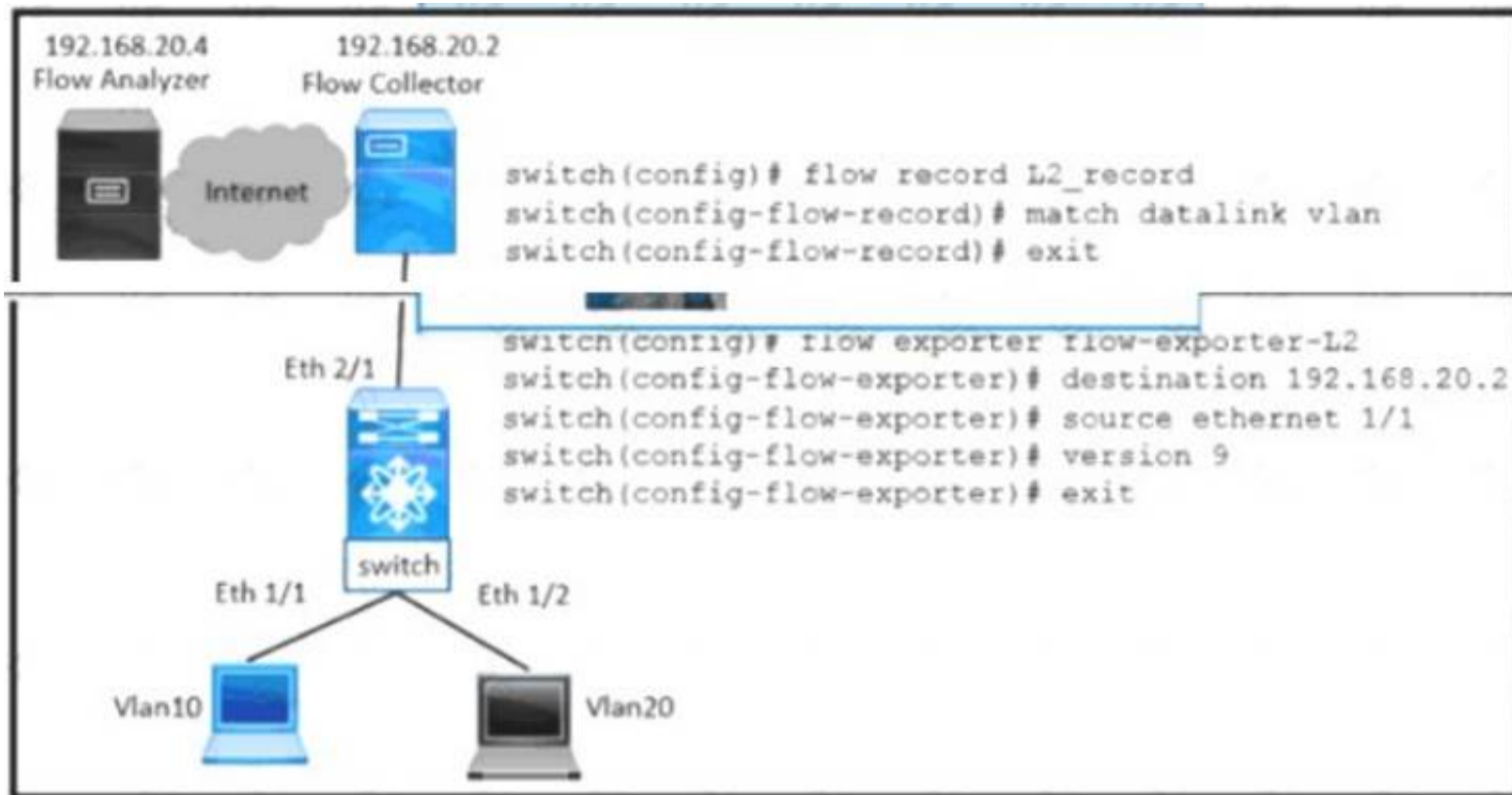
Cisco UCS C-Series Rack-Mount UCS-Managed Server Software Bundle

This bundle includes the following firmware images that are required to update components on rack-mount servers that have been integrated with and are managed by Cisco UCS Manager:

- CIMC firmware
- BIOS firmware
- Adapter firmware
- Storage controller firmware

NEW QUESTION 73

Refer to the exhibit.



VLAN 10 is experiencing delays and packet drops when the traffic is forwarded through the switch. The destination flow analyzer accepts traffic captures of not more than 30 seconds. Which configuration implements the traffic capture that meets the requirements?

- ☐ switch(config)# flow timeout 30000
 switch(config)# interface ethernet 1/1
 switch(config-if)# switchport
 switch(config-if)# switchport access vlan 10
 switch(config-if)# ip flow monitor L2_monitor output
- ☐ switch(config)# flow timeout 30
 switch(config)# interface ethernet 1/1
 switch(config-if)# switchport
 switch(config-if)# switchport access vlan 10
 switch(config-if)# mac packet-classify
 switch(config-if)# layer2-switched flow monitor L2_monitor input
- ☐ switch(config)# interface ethernet 1/1
 switch(config-if)# flow timeout 30
 switch(config-if)# switchport access vlan 10
 switch(config-if)# mac packet-classify
 switch(config-if)# ip flow monitor L2_monitor input
- ☐ switch(config)# interface ethernet 1/1
 switch(config)# flow timeout 30000
 switch(config-if)# switchport
 switch(config-if)# layer2-switched flow monitor L2_monitor output
 switch(config-if)# switchport access vlan 10

- A. Option A
- B. Option B
- C. Option C
- D. Option D

Answer: B

Explanation:

https://www.cisco.com/c/en/us/td/docs/switches/datacenter/nexus9000/sw/7-x/system_management/configuration
https://www.cisco.com/c/en/us/td/docs/switches/datacenter/sw/4_2/nx-os/system_management/configuration/gu

NEW QUESTION 75

An engineer must create a scheduler configuration to create two backup jobs per day. The backup file must be copied to a server in the operations VRF. Which configuration accomplishes this task?

- A)


```

scheduler schedule name CNFGBACKUP
  job name BACKUP-JOB
  copy running-config tftp://10.19.11.12/${SWITCHNAME}-${TIMESTAMP}.cfg vrf operations
  time start now repeat 12:00
      
```
- B)

```
scheduler schedule name CNFGBACKUP
job name BACKUP-JOB
show tech-support | redirect vrf operations tftp:/10.19.11.12/$(SWITCHNAME)-$(TIMESTAMP).cfg
time start daily 12:30 0:30
```

C)

```
scheduler schedule name CNFGBACKUP
job name BACKUP-JOB
copy startup-config tftp:/10.19.11.12/$(SWITCHNAME)-$(TIMESTAMP).cfg
time daily 12:30 0:30
```

D)

```
scheduler schedule name CNFGBACKUP
job name BACKUP-JOB
copy vrf operations config tftp:/10.19.11.12/$(SWITCHNAME)-$(TIMESTAMP).cfg
time start 12:30 repeat 12
```

- A. Option A
- B. Option B
- C. Option C
- D. Option D

Answer: A

NEW QUESTION 79

Which statement describes monitoring Fibre Channel traffic on a Cisco UCS 6332 Fabric Interconnect?

- A. Fibre Channel traffic is monitored only on one vHBA per server.
- B. The destination port for monitoring must be an unassigned Fibre Channel port.
- C. The monitoring of Fibre Channel traffic is limited to the default VSAN.
- D. Fibre Channel traffic is capable to be monitored as it is encapsulated as FCoE.

Answer: D

Explanation:

You can monitor Fibre Channel traffic using either a Fibre Channel traffic analyzer or an Ethernet traffic analyzer. When Fibre Channel traffic is monitored with an Ethernet traffic monitoring session, at an Ethernet destination port, the destination traffic is FCoE. The Cisco UCS 6300 Fabric Interconnect supports FC SPAN only on the ingress side. A Fibre Channel port on a Cisco UCS 6248 Fabric Interconnect cannot be configured as a source port.

[https://www.cisco.com/c/en/us/td/docs/unified_computing/ucs/ucs-manager/GUI-User-Guides/System-Monitoring/3-2/b_UCSM_GUI_System_Monitoring_Guide_3_2/ b_UCSM_GUI_System_Monitoring_Guide_3_2_chapter_01101.pdf](https://www.cisco.com/c/en/us/td/docs/unified_computing/ucs/ucs-manager/GUI-User-Guides/System-Monitoring/3-2/b_UCSM_GUI_System_Monitoring_Guide_3_2/b_UCSM_GUI_System_Monitoring_Guide_3_2_chapter_01101.pdf)

NEW QUESTION 82

What is a characteristic of EPLD updates on Cisco MDS 9000 Series Switches?

- A. EPLD updates are installed only via the Cisco DCNM GUI
- B. EPLD packages update hardware functionality on a device
- C. EPLD bundles are released separately from a Cisco MDS NX-OS release
- D. EPLD updates are nondisruptive to traffic flow

Answer: B

Explanation:

https://www.cisco.com/c/en/us/td/docs/switches/datacenter/mds9000/sw/6_2/release/notes/epld/epld_rn.htm

Introduction

Switches and directors in the Cisco MDS 9000 Series contain several electrical programmable logical devices (EPLDs) that provide hardware functionalities in all of the modules. As of Cisco MDS SAN-OS Release 1.2, EPLD image upgrades are periodically provided to include enhanced hardware functionality or to resolve known issues.

NEW QUESTION 85

Refer to the exhibit

```
switch1#show run interface Vlan 10

interface Vlan10
  description Service Datacenter-Rack-A
  ip address 209.165.200.225 255.255.255.224
!
end

switch1#
```

An engineer must mirror the traffic on a switch. The engineer locates the server port that requires monitoring on switch1, but the packet sniffer is on switch2. The engineer must configure the source IP address on switch1. Which command accomplishes this goal?

- A. monitor session 10 type erspan-source
- B. monitor erspan origin ip-address 209.165.200.225
- C. source ip 209.165.200.225
- D. source interface vbn512

Answer: B

NEW QUESTION 86

An engineer implements a Cisco UCS C-Series Server that must adhere to these security requirements:

- Unencrypted communication must be disabled.
- The session timeout must not exceed 15 minutes.
- Unencrypted traffic must be automatically diverted.
- CLI-based management must use nondefault ports.

Which configuration set meets these requirements?

☒ XML API Enabled
 HTTP Port: 8080 / HTTPS Port: 8443
 IPMI over LAN Enabled
 Randomized Encryption Key

☒ HTTP Port: 80 / HTTPS Port: 443
 Session Timeout: 900
 Redirect HTTP to HTTPS Enabled
 SSH Port: 2022

☒ Redfish Enabled checked
 Redfish Port: 443
 SSH Enabled checked
 HTTPS Port: 8443

☐ SSH Enabled
 SSH Port: 8022
 SSH Timeout: 1200
 IPMI over LAN Enabled

- A. Option A
- B. Option B
- C. Option C
- D. Option D

Answer: B

NEW QUESTION 88

A DNS server with IP address 192.168.1.1 is deployed in a data center. A network engineer must configure a Cisco UCS Fabric Interconnect to use this DNS. Which configuration should be applied?

- ☐ **fiel-mgmt-A# scope system**
fiel-mgmt-A /system # create dns 192.168.1.1
fiel-mgmt-A /system* # commit-buffer
- ☐ **fiel-mgmt-A# scope fabric-interconnect a**
fiel-mgmt-A /fabric-interconnect # set name 192.168.1.1
fiel-mgmt-A /fabric-interconnect # scope system
fiel-mgmt-A /system # commit-buffer
- ☐ **fiel-mgmt-A# scope fabric-interconnect a**
fiel-mgmt-A /fabric-interconnect # set name 192.168.1.1
fiel-mgmt-A /fabric-interconnect* # commit-buffer
- ☐ **fiel-mgmt-A# scope system**
fiel-mgmt-A /system # scope services
fiel-mgmt-A /system/services # create dns 192.168.1.1
fiel-mgmt-A /system/services* # commit-buffer

- A. Option A
B. Option B
C. Option C
D. Option D

Answer: D

NEW QUESTION 91

A network engineer repeatedly saves a configuration on Catalyst switches to NVRAM using the write memory command. What action should be taken to implement the same action on Nexus switches?

- A. Use the write memory command to save the configuration.
B. Use the alias command to use the write memory command.
C. Use the exit command to leave the configuration mode and save the configuration automatically.
D. Use the wri command to use the copy running-config startup-config command.

Answer: B

NEW QUESTION 94

Which two actions should be performed before upgrading the infrastructure and firmware of multiple UCS blades? (Choose two)

- A. Verify if the bootflash on the fabric interconnects in the Cisco UCS has at least 15% available space
B. Enable Smart Call Home feature during the firmware upgrade process
C. Verify if the bootflash on the fabric interconnects in the Cisco UCS has at least 10% available space
D. Run the Check Conformance feature to verify that all your components are running the compatible firmware version after the upgrade
E. Get Full State and All Configuration backup files before beginning the upgrade

Answer: DE

NEW QUESTION 97

An engineer must implement a Cisco UCS system at a customer site. One of the requirements is to implement SAN boot. The storage system maps the source WWPN to a unique LUN. Which method does Cisco recommend to configure the SAN boot?

- A. Create a SAN boot policy in which every initiator is mapped to the same target LUN.
B. Define the vHBAs as bootable and leave the default values on the target definition.
C. Define the vHBAs as bootable and leave the boot target definition empty.
D. Create a SAN boot policy in which every initiator is mapped to a different target LUN.

Answer: A

Explanation:

While you have multiple zones consisting of FC vHBAs and storage target wwpns for SAN Fabrics A and B, you are ultimately booting off of the same boot LUN. Multiple paths to get to the same boot device which correspond with the same LUN ID.
https://www.cisco.com/c/en/us/td/docs/unified_computing/ucs/ts/guide/UCSTroubleshooting/UCSTroubleshooting_chapter_0110.html#r_sanarrayconfigurationchecklist

NEW QUESTION 100

An engineer configures the properties of a Cisco UCS Cisco Integrated Management Controller network adapter for a standalone Cisco C-Series server. The Fallback Timeout in the vNIC was set to 600. When the failure occurs, the secondary must be used and then fallback when the primary interface becomes available again. Which action be taken to meet these requirements?

- A. Set default VLAN on the adapters.
B. Increase Cos to 6.
C. Disable VNTAG mode.
D. Enable Uplink failover.

Answer: D

Explanation:

Enable Uplink Failover check box - Check this box if traffic on this vNIC should fail over to the secondary interface if there are communication problems. VNTAG mode is required for this option.

Failback timeout field - After a vNIC has started using its secondary interface, this setting controls how long the primary interface must be available before the system resumes using the primary interface for the vNIC. Enter a number of seconds between 0 and 600. VNTAG mode is required for this option.

https://www.cisco.com/en/US/docs/unified_computing/ucs/c/sw/gui/config/guide/1.5/b_Cisco_UCS_C-series_G

NEW QUESTION 105

A company is running a pair of cisco Nexus 7706 series switches as part of a data center segment. All network engineers have restricted read-Write access to the core switches. A network engineer must a new FCoE VLAN to allow traffic from services toward FCoE storage. Which set of actions must be taken to meet these requirements?

- A. * 1. Create a user defined role and add the required privileges.* 2. Assign a role to a user.
- B. * 1. Add the required privilege to the VDC-admin role.
- C. Commit the changes to the active user database.
- D. * 1. Modify a network-operator role and add the required privileges.* 2. Assign a VDC-operator role to a user.
- E. * 1. Assign the network-admin role to a user.* 2. Commit the role to the switch to the active user database

Answer: B

NEW QUESTION 109

What is a benefit of using Cisco Tetration?

- A. It collects telemetry data from servers and then uses software sensors to analyze flow information.
- B. It collects near-real time data from servers and inventories the software packages that exist on servers.
- C. It collects policy compliance data and process details.
- D. It collects enforcement data from servers and collects interpacket variation.

Answer: A

NEW QUESTION 113

Refer to the exhibit.

```
OTV-Site1# show otv
OTV Overlay Information
Site Identifier 0000.0000.0111
Overlay interface Overlay200
VPN name: Overlay200
VPN state: UP
Extended vlans: 178 2500-2563 (Total:65)
Join interface(s): Eth1/2 (20.1.1.1)
Site vlan: 1999 (up)
AED-Capable: Yes
Capability: Unicast-Only
Is Adjacency Server: Yes
Adjacency Server(s): 20.1.1.1/20.2.1.1
```

A network engineer is setting up a multihomed OTV network. The first site has been set up with a primary and secondary adjacency server. Which configuration must be added on the remote OTV AEDs site?

- A. interface Overlay200otv join-interface Ethernet1/2 otv extend-vlan 178, 2500-2563otv use-adjacency-server 20.1.1.1 unicast-only
- B. interface Overlay200otv join-interface Ethernet1/2 otv extand-vlan 178, 2500-2563otv adjacency-server unicast-only
- C. interface Overlay200otv join-interface Ethernet1/2 otv extend-vlan 178, 2500-2563
- D. interface Overlay200otv join-interface Ethernet1/2 otv extend-vlan 178, 2500-2563otv use-adjacency-server 20.1.1.1 20.2.1.1 unicast-only

Answer: D

NEW QUESTION 115

Refer to the exhibit.

```
show install all impact epld bootflash:n9000-epld.6.1.2.I3.1.img
```

What is the outcome of this command when the ELPD is updated on a Cisco Nexus 9000 series switch?

- A. displays the compatibility of the EPLD upgrade and the image in the bootflash
- B. shows a simulated upgrade of the EPLD
- C. upgrades the EPLD on the switch disruptively
- D. displays the impact of the upgrade on the operation of the switch

Answer: D

Explanation:

You can use the show install impact epld bootflash: command to determine whether the EPLDs can be upgraded for all the modules or for specific modules on a switch. This command indicates the current EPLD images, new EPLD images, and whether the upgrades would be disruptive to switch operations. <https://www.cisco.com/c/en/us/td/docs/switches/datacenter/nexus9000/sw/6-x/epld/n9k-epld-rn-61.html>

NEW QUESTION 116

Which Cisco UCS Manager XML encoded backup type must be used to back up user names, roles, and service profiles?

- A. Full State Configuration
- B. Logical Configuration
- C. All Configuration
- D. System Configuration

Answer: C

NEW QUESTION 119

Drag and drop the keywords onto the URL request to collect all the subnets configured under tenant Production using a REST API. Not all options are used.

https://{apic_ip}/api/

/uni/tn-Production.json?

=

&

=fvSubenet

target-subtree-class

query-target-filter

query-target

children

subtree

class

mo

- A. Mastered
- B. Not Mastered

Answer: A

Explanation:

Graphical user interface, text Description automatically generated

NEW QUESTION 122

Refer to the exhibit.

```
; Router 1 configuration
interface loopback1
 ip address 10.10.32.121/30
 ip ospf network point-to-point
 ip router ospf 1 area 0.0.0.0
 ip pim sparse-mode

ip pim rp-address 10.10.32.122 group-list 225.0.0.0/8 bi-dir
```

In a bidirectional PIM network using Phantom RP as an RP redundancy mechanism, two Cisco NX-OS routers have these requirements:

- R1 must be the active RP.
- R2 must be the backup RP that is used only if R1 is not reachable

Drag and drop the configuration steps to complete the configuration for Router 2. Not all configuration steps are used.

```

; Router 2 configuration
interface loopback1
  ip address 
  ip ospf network 
  ip router ospf 1 area 0.0.0.0
  ip pim 
  ip pim rp-address group-list 225.0.0.0/8 bi-dir
  
```

10.10.32.121/32	10.10.32.121	point-to-point	broadcast
10.10.32.121/29	10.10.32.122	sparse-mode	dense-mode

- A. Mastered
- B. Not Mastered

Answer: A

Explanation:

Graphical user interface, text, application Description automatically generated

Answer :

ip address 10.10.32.121/29

ip ospf network point-to-point

router ospf 1 area 0.0.0.0

ip pim sparse-mode

ip pim rp-address 10.10.32.122 group-list 255.0.0.0/8 bi-dir

NEW QUESTION 123

An engineer configures a role for a new user in Cisco UCS Manager The role should allow the user to configure vHBAs, vNICs, and server port types. Which role should be assigned to allow the engineer to complete this task?

- A. network administrator
- B. operations
- C. server-compute
- D. AAA administrator

Answer: A

NEW QUESTION 125

An engineer must configure Cisco IMC server management NIC for autonegotiation. Which setting should be selected?

- A. Cisco card
- B. shared LOM
- C. dedicated
- D. shared LOM EXT

Answer: C

Explanation:

https://www.cisco.com/c/en/us/td/docs/unified_computing/ucs/c/sw/cli/config/guide/4_0/b_Cisco_UCS_CSeries_CLI_Configuration_Guide_40/b_Cisco_UCS_CSeries_CLI_Configuration_Guide_40_chapter_01000.html

<https://www.cisco.com/c/en/us/support/docs/servers-unified-computing/unified-computing-system/200221-Auto-negotiation-not-enabling-by-default.html>

NEW QUESTION 127

An engineer must export the Cisco UCS Manager configuration for backup purposes. The requirement is to export the configuration that contains the AAA and RBAC configuration Also the file must be stored a human-readable format 'Much backup type must be selected to meet these requirements?

- A. logical configuration

- B. system configuration
- C. fun state
- D. all configuration

Answer: B

NEW QUESTION 129

Refer to the exhibit.

Python Code:

```
import requests
import json

url='http://lab-93180bdlf-sw1/ins'
switchuser='dazfre'
switchpassword='Clscorox0'

myheaders={'content-type' 'application/json'}
payload={
    "ins_api": {
        "version": "1.0",
        "type": "cli_show",
        "chunk": "0",
        "sid": "1",
        "input": "configure terminal : feature hsrp",
        "output_format": "json"
    }
}
response = requests post(url,data=json.dumps(payload),
headers=myheaders,auth=(switchuser,switchpassword))

print(response.text)
```

ERROR MESSAGE

```
{
  "ins_api" : [
    {
      "type": "cli_show",
      "version": "1.0",
      "sid": "eoc",
      "outputs": [
        {
          "output": [
            {
              "clierror": "% invalid command\n",
              "input": "configure terminal",
              "msg": "input CLI command error",
              "code": "400"
            },
            {
              "clierror": "% invalid command\n",
              "input": "feature hsrp",
              "msg": "input CLI command error",
              "code": "400"
            }
          ]
        }
      ]
    }
  ]
}
```

Why does the python code for Cisco NX-API print an error message?

- A. The “type” is wrong in the header of the request and should be “cli_conf”.
- B. NX-API does not allow configuration for features via the requests module.
- C. The “type” is wrong in the body of the request and should be “cli_conf”.
- D. The JSON is not a supported format for the NX-API.

Answer: C

Explanation:

"Commands that belong to different message types should not be mixed. For example, show commands are cli_show message type and are not supported in cli_conf mode." https://www.cisco.com/c/en/us/td/docs/switches/datacenter/nexus7000/sw/programmability/guide/cisco_nexus7000_programmability_guide_8x/b-cisco-nexus7000-programmability-guide-8x_chapter_011.html

the payload "type" value is wrong in the body of the request. For the request to be successful, it should be changes to "cli_conf".

For example, if we run the same request with the updated payload:

```
{
  "ins_api": { "version": "1.0",
  "type": "cli_conf",
  "chunk": "0",
  "sid": "1",
  "input": "configure terminal ;feature hsrp", "output_format": "json"
}
}
```

We get a 200 response:

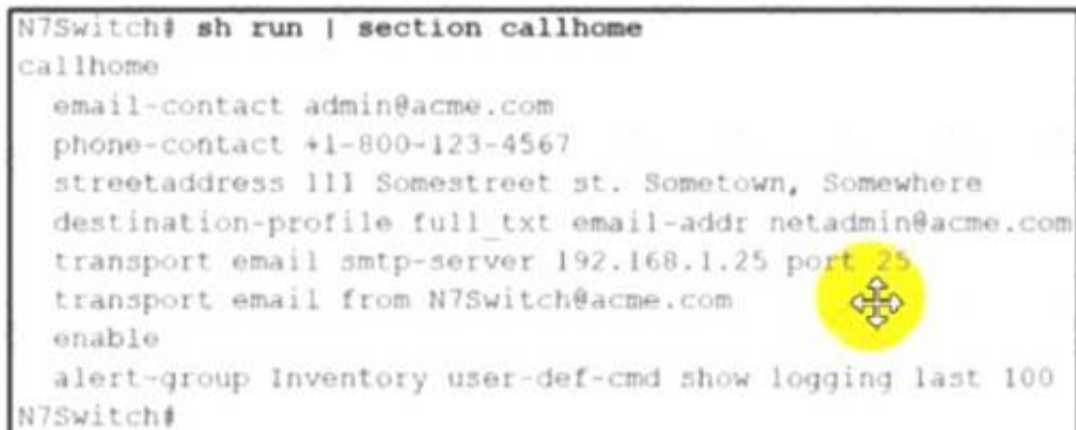
```
{
  "ins_api": { "sid": "eoc",
```

```
"type": "cli_conf",
"version": "1.0", "outputs": {
"output": [
{
"code": "200",
"msg": "Success",
"body": {}
},
{
"code": "200",
"msg": "Success",
"body": {}
}
]
}
}
```

CLI verification: nxos9kv# sh run | inc hsrp feature hsrp

NEW QUESTION 132

Refer to the exhibit.



```
N7Switch# sh run | section callhome
callhome
 email-contact admin@acme.com
 phone-contact +1-800-123-4567
 streetaddress 111 Somestreet st. Sometown, Somewhere
 destination-profile full_txt email-addr netadmin@acme.com
 transport email smtp-server 192.168.1.25 port 25
 transport email from N7Switch@acme.com
 enable
 alert-group Inventory user-def-cmd show logging last 100
N7Switch#
```

A network engineer is configuring the Smart Call Home feature on a Cisco Nexus Series Switch. An email must be generated that contains the last 100 lines of the log every time a new piece of hardware is inserted into the chassis. Which command must be added to the configuration to receive the email?

- A. alert-group Linecard-Hardware user-def-cmd show logging last 100
- B. destination-profile Operations alert-group Inventory
- C. destination-profile Operations message-level 2
- D. alert-group Operations user-def-cmd show logging last 100

Answer: A

NEW QUESTION 137

A network engineer must migrate a Cisco WSA virtual appliance from one physical host to another physical host by using VMware vMotion. What is a requirement for both physical hosts?

- A. The hosts must run Cisco AsyncOS 10.0 or greater.
- B. The hosts must have access to the same defined network.
- C. The hosts must run different versions of Cisco AsyncOS.
- D. The hosts must use a different datastore than the virtual appliance

Answer: B

NEW QUESTION 141

An engineer must perform backup and restore of the Cisco UCS Manager configuration. The configuration must be stored on a remote server via XML encoding. The backup must store the configurations of the chassis, FEX, rack servers, IOMs, and blade server. Which set of actions accomplishes these goals?

- A. Perform a logical configuration backup and run the replace import method.
- B. Perform a full state configuration backup and run the restore procedure.
- C. Perform a system configuration backup and run the merge import method
- D. Perform an all configuration backup and run the system restore procedure.

Answer: A

NEW QUESTION 143

Refer to the exhibit.

```
UCS-A# scope adapter 1/1/1
UCS-A# /chassis/server/adapter # show image
Name                               Type      Version    State
-----
ucs-m81kr-vic.2.2.1b.bin          Adapter   2.2(1b)    Active

UCS-A# /chassis/server/adapter # update firmware 2.2(1b)
UCS-A# /chassis/server/adapter* # activate firmware 2.2(1b)
set-startup-only
UCS-A# /chassis/server/adapter* # commit-buffer
UCS-A# /chassis/server/adapter #
```

What is the result of this series of commands?

- A. It reboots the server immediately.
- B. It verifies the firmware update on the server.
- C. It activates the firmware on the next adapter boot.
- D. It updates the firmware on adapter 1/1/1 immediately.

Answer: C

Explanation:

https://www.cisco.com/c/en/us/td/docs/unified_computing/ucs/ucs-manager/CLI-User-Guides/Firmware-Mgmt/ Graphical user interface, text, application, email Description automatically generated

Step 6	UCS-A /chassis/server/adapter # activate firmware version-num [set- startup-only]	Activates the selected firmware version on the adapter. Use the set-startup-only keyword if you want to move the activated firmware into the pending-next-boot state and not immediately reboot the server. The activated firmware does not become the running version of firmware on the adapter until the server is rebooted. You cannot use the set-startup-only keyword for an adapter in the host firmware package.
--------	--	---

NEW QUESTION 148

An engineer must configure the HSRP protocol to implement redundancy using two Cisco Nexus Series Switches In addition, the HSRP must meet these requirements

- Switch1 must retain the primary role if switch2 goes offline
 - Switch1 must retain the primary role until normal conditions are restored.
 - Switch1 and switch2 must ensure that the routing tables are converged before taking the active role
 - switch2 must retain the primary role if the default gateway is not reachable
- Drag and drop the configuration commands from the right to the left to meet the requirements. The commands

are used more than once Not all commands are used

```
! switch1
track 100 ip route 0.0.0.0/0 reachability

interface ethernet 1/1
ip 209.165.200.226/27

hsrp 200
ip 209.165.200.225
priority 210
[ ]
[ ]
no shutdown

! switch2
track 100 ip route 0.0.0.0/0 reachability

interface ethernet 1/1
ip 209.165.200.227/27

hsrp 200
ip 209.165.200.225
[ ]
[ ]
no shutdown
```

preempt delay minimum 30
track 100 decrement 200
track 200 decrement200
preempt sync 30

- A. Mastered
- B. Not Mastered

Answer: A

Explanation:

```
! switch1
track 100 ip route 0.0.0.0/0 reachability

interface ethernet 1/1
ip 209.165.200.226/27

hsrp 200
ip 209.165.200.225
priority 210
track 100 decrement 200
preempt delay minimum 30
no shutdown

! switch2
track 100 ip route 0.0.0.0/0 reachability

interface ethernet 1/1
ip 209.165.200.227/27

hsrp 200
ip 209.165.200.225
track 100 decrement 200
preempt delay minimum 30
no shutdown
```

```
preempt delay minimum 30
track 100 decrement 200
track 200 decrement 200
preempt sync 30
```

NEW QUESTION 153

An engineer must configure the HSRP protocol between two Cisco Nexus 9000 Series Switches. This configuration is present on Nexus A.

```
! Nexus A
key chain NHRP-KEYS
key 1010
key-string 7 072a43795c1d0c4050883003163b3e2121a720361a021e11
accept-lifetime 00:00:00 Jan 01 2021 23:59:59 Aug 31 2021
send-lifetime 00:00:00 Jan 01 2021 23:59:59 Jul 31 2021
key 1020
key-string 7 086f43cd5c150c1702630203163b3e2221a520261a011a12
accept-lifetime 00:00:00 Jul 01 2021 23:59:59 Dec 31 2021
send-lifetime 00:00:00 Jul 01 2021 23:59:59 Dec 31 2021
interface ethernet 1/1
ip 209.165.200.226/27
hsrp 200
priority 201
ip 209.165.200.225
-- missing output --
no shutdown
```

The final HSRP configuration must meet these requirements:

- > The HSRP communication must be secured on both switches
- > Both switches must support more than 300 groups

Which two commands must be added to the HSRP configuration on Nexus A to complete these requirements? (Choose two)

- A. hsrp version 1
- B. hsrp version 2
- C. authentication text 1020
- D. authenticate md5 key-chain NHRP-KEYS
- E. authentication text 1010

Answer: BD

NEW QUESTION 155

An engineer must optimize ARP responses and reduce unnecessary ARP broadcasts over the VXLAN/EVPN fabric. Which action accomplishes these tasks?

- A. Configure ip proxy-arp under the VLAN SVI associated with the VXLAN VNI.
- B. Configure ip proxy-arp within the VXLAN VNI configuration under the VTEP NVE interface.
- C. Configure suppress-arp within the VXLAN VNI configuration under the VTEP NVE interface.
- D. Configure suppress-arp under the VLAN SVI associated with the VXLAN VNI.

Answer: C

NEW QUESTION 158

Which data interchange format is presented in this output?

```
{
  "totalCount": "1",
  "imdata": [
    "fabricNode": {
      "attributes": {
        "address": "10.0.40.65",
        "apicType": "apic",
        "dn": "topology/pod-1/node-201",
        "id": "201",
        "lastStateModTs": "2020-09-07T10:20:57.236+00:00",
        "modTs": "2020-09-07T10:21:18.912+00:00",
        "model": "N9K-C9336PQ",
        "monPolDn": "uni/fabric/monfab-default",
        "role": "spine",
        "serial": "FDO39106329J",
        "uid": "0",
        "vendor": "Cisco Systems, Inc",
      }
    }
  ]
}
```

- A. XML
- B. YAML
- C. JSON
- D. CSS

Answer: C

NEW QUESTION 162

An administrator needs to configure an automated policy to shut down a link when a given threshold is exceeded on MDS switch. Which feature needs to be used?

- A. Scheduler
- B. RMON
- C. EEM
- D. Call Home

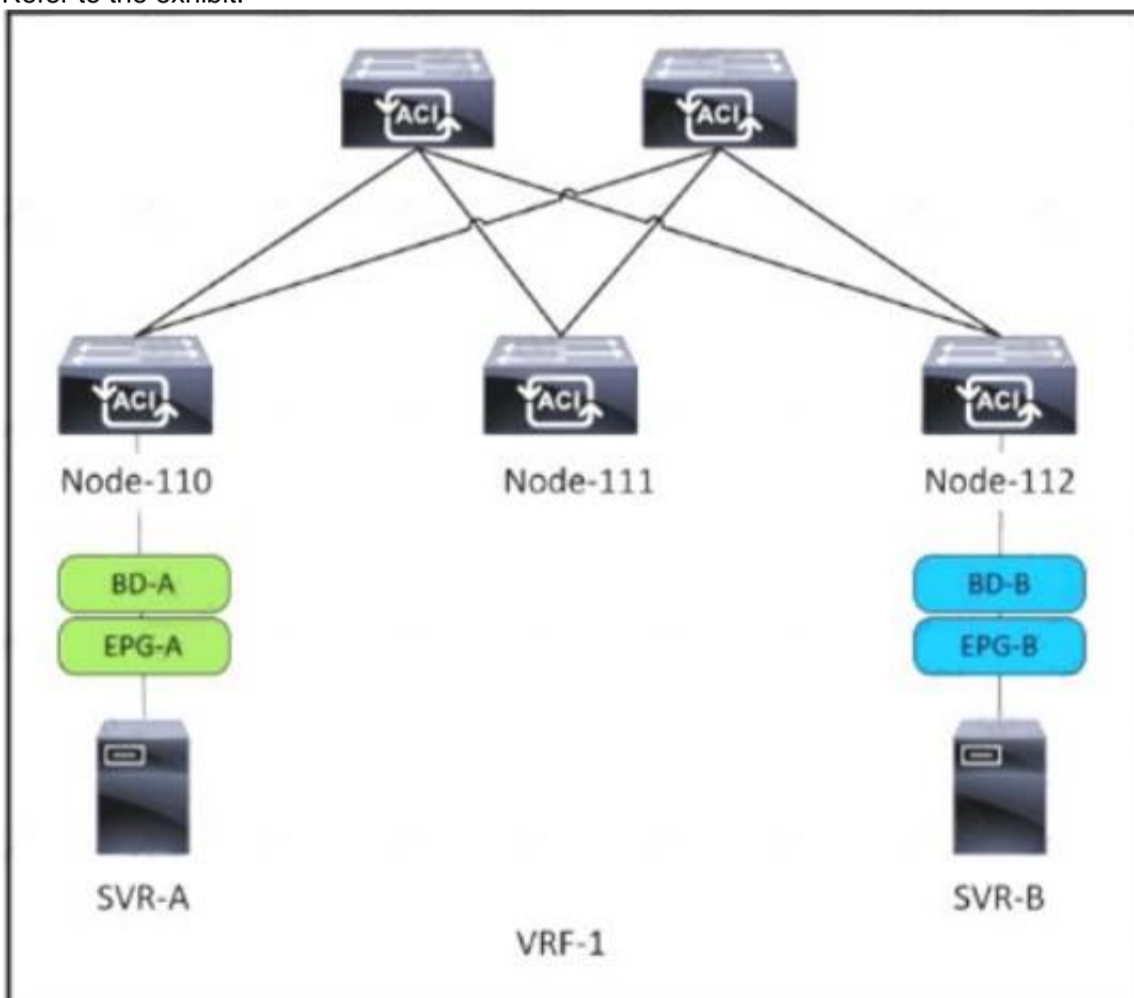
Answer: C

Explanation:

https://www.cisco.com/c/en/us/td/docs/switches/datacenter/mds9000/sw/6_2/configuration/guides/interfaces/nx-os/cli_interfaces/intf.html

NEW QUESTION 163

Refer to the exhibit.



SVR-A in EPG-A/BD-A fails to reach SVR-B in EPG-B/BD-B. Which two conditions should be verified to analyze the traffic between the two EPGs? (Choose two.)

- A. A contract exists between EPG-A and EPG-B and allows the traffic.
- B. Limit Endpoint Learning is disabled on the bridge domain for EPG-B.
- C. SVR-B is learned as an endpoint in EPG-B from Node-112.
- D. EPG-A and EPG-B are excluded from the preferred group.

E. The bridge domain for EPG-B floods ARP packets.

Answer: AC

NEW QUESTION 164

A network engineer must configure a Cisco MDS switch to use the local user database for console access if all AAA servers are unreachable. Which configuration should be applied to complete this task?

- A. aaa authentication login default fallback error local
- B. aaa authentication login console fallback error local
- C. aaa authentication login default local
- D. aaa authentication login console local

Answer: B

NEW QUESTION 169

Several production and development database servers exist in the same EPG and IP subnet. The IT security policy is to prevent connections between production and development. Which attribute must be used to assign the servers to different microsegments?

- A. Data center
- B. VMM domain
- C. VM name
- D. IP address

Answer: C

Explanation:

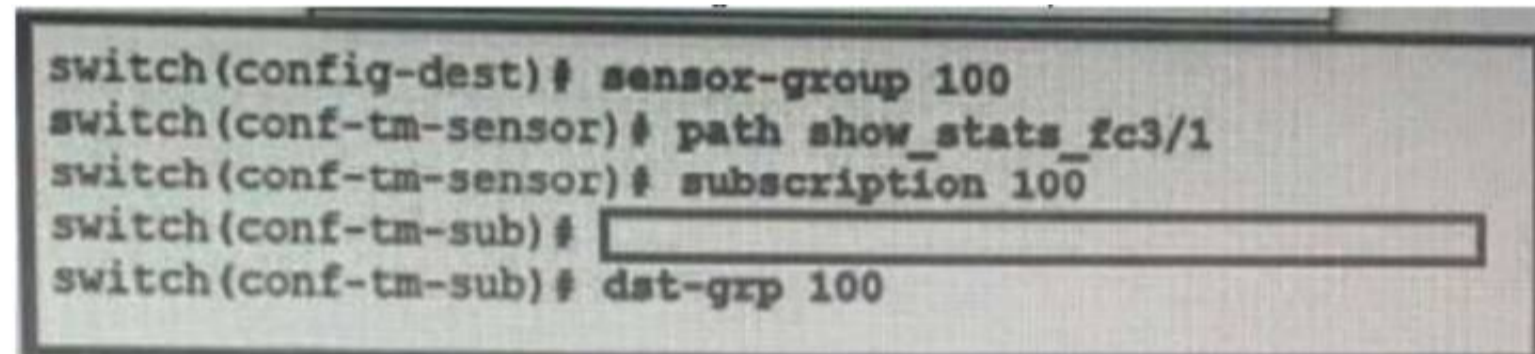
https://www.cisco.com/c/en/us/td/docs/switches/datacenter/aci/apic/sw/3-x/virtualization/b_ACI_Virtualization_

Example: **Microsegmentation with Cisco ACI Within a Single EPG or Multiple EPGs in the Same Tenant**

You might assign web servers to an EPG so that you can apply the similar policies. By default, all endpoints within an EPG can freely communicate with each other. However, if this web EPG contains a mix of production and development web servers, you might not want to allow communication between these different types of web servers. Microsegmentation with Cisco ACI allows you to create a new EPG and autoassign endpoints based on their VM name attribute, such as "Prod-xxxx" or "Dev-xxx".

NEW QUESTION 171

Refer to the exhibit.



An engineer needs to implement streaming telemetry on a cisco MDS 9000 series switch. The requirement is for the show command data to be collected every 30 seconds and sent to receivers. Which command must be added to the configuration meet this requirement?

- A. Sensor-grp 200 sample-period 30000
- B. Snsr-grp 200 sample-interval 30
- C. Sensor-grp 200 sample-period 30
- D. Snsr-grp 200 sample-interval 30000

Answer: D

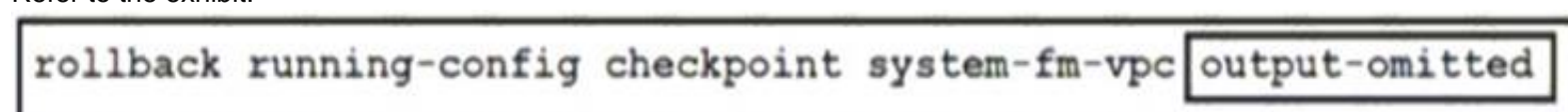
Explanation:

snsr-grp <id> sample-interval <interval> Currently, sensor group ID supports only numeric ID values. Specify the streaming sample interval value; the value must be in milliseconds. The minimum streaming sample interval that is supported is 30000 milliseconds.

https://www.cisco.com/c/en/us/td/docs/switches/datacenter/mds9000/sw/8_x/config/san_analytics/cisco-mds900

NEW QUESTION 173

Refer to the exhibit.



A network engineer is implementing a configuration checkpoint on a Cisco Nexus 9000 Series Switch. The configuration must skip any existing vPC configuration errors and must complete if there are any configuration errors. The engineer finished the vPC domain configuration part. Which command completes the checkpoint implementation?

- A. stop-at-first-failure

- B. atomic
- C. best-effort
- D. verbose

Answer: C

NEW QUESTION 176

APIC EPG Resolution Immediacy is set to "Immediate" Which statement is true about the Deployment Immediacy for VMM domains associated to EPGs?

- A. The "Immediate" and "On demand" options require a port group to be created on the VDS.
- B. If "On demand" is selected, the policy is programmed in the hardware only when the APIC detects a VM created in the EPG.
- C. If "On demand" is selected the policy is programmed in the hardware only when the first packet is received through the data path.
- D. If "immediate" is selected the policy is programmed in the hardware as soon as the leaf is booted.

Answer: C

Explanation:

"Deployment Immediacy On demand — Specifies that the policy is programmed in the hardware policy CAM only when the first packet is received through the data path."

https://www.cisco.com/c/en/us/td/docs/switches/datacenter/aci/apic/sw/1-x/aci-fundamentals/b_ACI-Fundament

NEW QUESTION 181

A network engineer must perform a backup and restore of the Cisco Nexus 5000 Series Switch configuration. The backup must be made to an external backup server. The only protocol permitted between the Cisco Nexus Series switch and the backup server is UDP. The backup must be used when the current working configuration of the switch gets corrupted. Which set of steps must be taken to meet these requirements?

- A. 1. Perform a running-config backup to an SFTP serve
- B. 2. Copy backup-config from the SFTP server to the running-config file.
- C. 1. Perform a startup-config backup to a TFTP serve
- D. 2. Copy backup-config from the backup server to the running-config file.
- E. 1. Perform a running-config backup to an SCP serve
- F. 2. Copy running-config in the boot flash to the running-config file.
- G. 1. Perform a startup-config backup to an FTP serve
- H. 2. Copy startup-config in the boot flash to the running-config file.

Answer: B

Explanation:

TFTP runs on UDP 69 = Is correct

NEW QUESTION 184

An engineer needs to make an XML backup of Cisco UCS Manager The backup should be transferred using an authenticated and encrypted tunnel and it should contain all system and service profiles configuration Which command must be implemented to meet these requirements?

- ☐ create file scp://user@host35/backups/all-config9.bak all-configuration
- ☐ copy startup-config scp://user@host35/backups/all-config9.bak all-configuration
- ☒ create backup scp://user@host35/backups/all-config9.bak all-configuration
- ☐ copy running-config scp://user@host35/backups/all-config9.bak all-configuration

- A. Option A
- B. Option B
- C. Option C
- D. Option D

Answer: C

Explanation:

https://www.cisco.com/en/US/docs/unified_computing/ucs/sw/cli/config/guide/1.4.1/CLI_Config_Guide_1_4_1

The following example creates a disabled all-configuration backup operation for hostname host35 and commits the transaction:

```
UCS-A# scope system
UCS-A /system* # create backup scp://user@host35/backups/all-config9.bak all-configuration disabled
Password:
UCS-A /system* # commit-buffer
UCS-A /system #
```

NEW QUESTION 186

An engineer must configure remote authentication on a Cisco UCS system. The user password must be encrypted before it is sent to the authentication server. The company security policy requires the server to be based on an open standard. Drag and drop the UCS CLI AAA configuration commands from the left into the order in which they must be implemented on the right. Not all commands are used.



- A. Mastered
 B. Not Mastered

Answer: A

Explanation:

UCS-A# scope security
 UCS-A /security # scope radius
 UCS-A /security/radius # create server radiusserv7
 UCS-A /security/radius/server* # set key
 UCS-A /security/radius/server* # commit-buffer

NEW QUESTION 189

An engineer must configure OSPF routing on Cisco Nexus 9000 Series Switches. The IP subnet of the Eth 1/2 interface for both switches must be advertised via OSPF. However, these interfaces must not establish OSPF adjacency or send routing updates. The current OSPF adjacency over the interface Eth1/1 on SW1 and Eth1/1 on SW2 must remain unaffected. Which configuration must be applied to both Nexus switches to meet these requirements?

- A. interface ethernet 1/2passive-interface default
 B. Interface ethernet 1/2ip ospf network point-to-point
 C. interface ethernet 1/2ip ospf passive-interface
 D. interface ethernet 1/2no ip ospf passive-Interface

Answer: C

NEW QUESTION 194

Which two statements about the process of performing an EPLD upgrade on a Cisco MDS 9000 series Switch are true? (Choose two.)

- A. If an upgrade is interrupted, the upgrade continues after a connection is restored.
 B. The upgrade can be performed from the standby supervisor module.
 C. The active supervisor can be upgraded.
 D. Modules must be online to be upgraded.
 E. The Upgrade process disrupts only the module that is being upgraded.

Answer: DE

Explanation:

https://www.cisco.com/c/en/us/td/docs/switches/datacenter/mds9000/sw/8_x/release_notes/epld/epld_rn_8x.htm Graphical user interface, text, application, email Description automatically generated

"On a Cisco Nexus 9500 platform switch that has two supervisor modules, upgrade the EPLDs for the standby supervisor and then switch the active supervisor to the standby mode to upgrade its EPLDs. The supervisor switchover is not disruptive to traffic on Cisco Nexus 9500 platform switches. On a switch that has only one supervisor module, you can upgrade the active supervisor, but this will disrupt its operations during the upgrade."

Guidelines and Limitations

When you upgrade or downgrade the EPLDs, observe the following guidelines and limitations:

- You can upgrade each module only when it is online. The EPLD upgrade is only disruptive to the module being upgraded.
- If you interrupt an EPLD upgrade or downgrade, the module must be upgraded again.
- In Cisco MDS 9000 Director Switches, EPLD upgrade or downgrade can only be executed from the active supervisor module. To upgrade the supervisor EPLDs nondisruptively, upgrade the standby supervisor and then switchover. After the new standby supervisor is online its EPLDs can be upgraded.
- In Cisco MDS 9000 Series Fabric Switches, be sure to specify 1 as the module number. The switch must be power cycled for the EPLDs to start running the new code.

Under Installation guidelines. https://www.cisco.com/c/en/us/td/docs/switches/datacenter/nexus9000/sw/92x/epld-rn/nxos_n9K_epldRN_924.html

NEW QUESTION 199

A network architect wants to propose a scalable network monitoring solution in which data is repeatedly acquired from network devices. The solution must use a push model and provide close to realtime access to operational data. Which technology must be used to meet these requirements?

- A. streaming telemetry
- B. logging
- C. SNMPv3
- D. CLI-based scripting

Answer: A

Explanation:

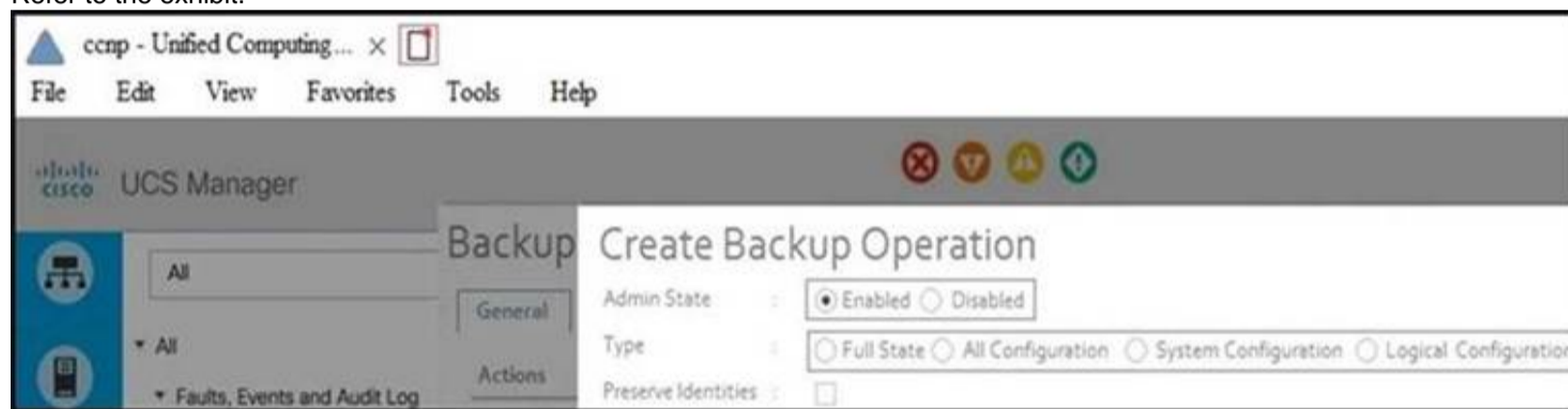
<https://blogs.cisco.com/developer/its-time-to-move-away-from-snmp-and-cli-and-use-model-driven-telemetry>

Why Model-Driven Telemetry?

Model-Driven Telemetry is a new approach for network monitoring in which data is streamed from network devices continuously using a push model and provides near real-time access to operational statistics. You can precisely define what data you want to subscribe to using standard YANG models (YANG is a data modeling language used to model configuration and state data manipulated by the NETCONF protocol) with no CLI required. It allows network devices to continuously stream real time configuration and operating state information to subscribers. Structured data is published at a defined cadence, or on-change, based upon the subscription criteria and data type.

NEW QUESTION 204

Refer to the exhibit.



Which backup operation type does not include the Preserve Identities feature?

- A. logical configuration
- B. system configuration
- C. full state
- D. all configuration

Answer: C

Explanation:

This checkbox remains selected for All Configuration and System Configuration. Full State backup does not have Preserver Identity feature.

All configs, logical and system backups seem to allow "preserve identities":

<https://books.google.pt/books?id=5VXUDwAAQBAJ&pg=PT699&lpg=PT699&dq=Preserve+Identities+feature+backup+ucs&source=bl&ots=daWxti4DV&sig=ACfU3U3X8UIPtS8EewzRIqTxqpyNVqOaNQ&hl=es419&sa=X&ved=2ahUKEwiYhtaxyMDqAhXFzIUKHXI8CzoQ6AEwC3oECAoQAQ#v=onepage&q=Preserve%20Identities%20feature%20backup%20ucs&f=false>

NEW QUESTION 208

Which two configuration settings are available in the in the cisco UCS flmware Auto sync server policy?

- A. User Notification
- B. User Acknowledge
- C. No Action
- D. Delayed Action
- E. Immediate Action

Answer: BC

Explanation:

https://www.cisco.com/c/en/us/td/docs/unified_computing/ucs/sw/firmware-mgmt/gui/2-2/b_GUI_Firmware_M Following are the values for the Firmware Auto Sync Server policy: • User Acknowledge—Firmware on the server is not synchronized until the administrator acknowledges the upgrade in the Pending Activities dialog box. • No Action—No firmware upgrade is initiated on the server.

NEW QUESTION 212

A storage engineer must configure zoning on a Cisco MDS 9000 Series switch. Drag and drop actions from the left into the order on right

zone name Zone1 vsan 4	Step 1
member pwwn 10:00:00:23:45:67:89:ac	Step 2
zoneset activate name Zoneset1 vsan 4	Step 3
member Zone1	Step 4
copy running-config startup-config	Step 5
zoneset name Zoneset1 vsan 4	Step 6

- A. Mastered
B. Not Mastered

Answer: A

Explanation:

Graphical user interface, table Description automatically generated with medium confidence

```
Switch1# configure terminal
Enter configuration commands, one per line. End with CNTL/Z.
```

```
Switch1#(config)# vsan database
Switch1#(config-vsan-db)# vsan 100
Switch1#(config-vsan-db)# exit
```

```
Switch1#(config)# zone name zone1 vsan 100
Switch1#(config-zone)# member pwwn 11:11:11:11:11:11:1a
Switch1#(config-zone)# member pwwn 11:11:11:11:11:11:1b
Switch1#(config-zone)# exit
```

```
Switch1#(config)# zoneset name setA vsan 100
Switch1#(config-zoneset)# member zone1
Switch1#(config-zoneset)# exit
```

```
Switch1#(config)# zoneset activate name setA vsan 100
Zoneset activation initiated. check zone status
Switch1#(config)# exit
```

```
Switch1# sh zoneset active vsan 100
zoneset name setA vsan 100
zone name zone1 vsan 100
pwwn 11:11:11:11:11:11:1a
pwwn 11:11:11:11:11:11:1b
Switch1#
```

https://www.cisco.com/c/en/us/td/docs/switches/datacenter/mds9000/sw/6_2/configuration/guides/fabric/nx-os/nx_os_fabric/zone.html

NEW QUESTION 216

A host EPG Client wants to talk to a webserver in EPG Web. A contract with default settings is defined between EPG Client and EPG Web, which allows TCP communication initiated by the client toward the webserver with TCP destination port 80. Which statement is true?

- A. If EPG Web is made a preferred group member, a contract between EPG Client and EPG Web is no longer required for the host in EPG Client to reach the webserver in EPG Web.
B. If vzAny is configured to consume and provide a "deny all" contract, traffic between EPG Client and EPG Web is no longer allowed.
C. The host in EPG Client is allowed to connect to TCP destination port 80 on the webserver in EPG Web. The webserver will not be allowed to initiate a separate TCP connection to a host port with TCP source port 80.
D. The host in EPG Client is allowed to connect to TCP destination port 80 on the webserver in EPG Web. The webserver is allowed to initiate a separate TCP connection to a host port with TCP source port 80.

Answer: D

Explanation:

Apply Both Direction and Reverse Filter Port in the subject for the filter. These two options are by default enabled...This means that if the provider EPG initiates traffic toward the consumer EPG, the Cisco ACI fabric allows it for any destination ports if the source port is 80.
https://www.cisco.com/c/en/us/td/docs/switches/datacenter/aci/apic/sw/1-x/Operating_ACI/guide/b_Cisco_Operating_ACI/b_Cisco_Operating_ACI_chapter_01000.html Reverse filter and apply in both directions is default.
 If a filter allows traffic from any consumer port to a provider port (e.g. 8888), if reverse port filtering is enabled and the contract is applied both directions (say for TCP traffic), either the consumer or the provider can initiate communication. The provider could open up a TCP socket to the consumer using port 8888, whether the provider or consumer sent traffic first. https://www.cisco.com/c/en/us/td/docs/switches/datacenter/aci/apic/sw/1-x/Operating_ACI/guide/b_Cisco_Operating_ACI/b_Cisco_Operating_ACI_chapter_01000.html

NEW QUESTION 219

Which two actions should be taken before an upgrade is started on a Cisco MDS switch? (Choose two.)

- A. check the impact of the upgrade using the show install all impact command
- B. disable Cisco Fabric Services
- C. back up the configuration
- D. free up space on the USB3 device by deleting old Cisco NX-OS image files
- E. make the primary supervisor the active supervisor

Answer: AC

Explanation:

https://www.cisco.com/c/en/us/td/docs/switches/datacenter/mds9000/sw/5_2/upgrade/guides/nx-os/upgrade.html

NEW QUESTION 222

Refer to the exhibit.

```
monitor fabric session mySession
description "This is my fabric ERSPAN session"
destination tenant t1 application appl epg epg1 destination-ip 192.0.20.123 source-ip-prefix 10.0.20.1
erspan-id 100
ip dscp 42
ip ttl 16
mtu 9216
exit
source interface eth 1/1 switch 101
direction tx
filter tenant t1 bd bdl
filter tenant t1 vrf vrf1
no shut
```

An engineer needs to implement a monitoring session that should meet the following requirements:

- Monitor traffic from leaf to leaf switches on a Cisco ACI network
- Support filtering traffic from Bridge Domain or VRF

Which configuration must be added to meet these requirements?

- A. interface eth 1/2 switch 101
- B. interface eth 1/2 leaf 101
- C. filter tenant t1 application app1 epg epg1
- D. application epg epg1 app1

Answer: C

NEW QUESTION 225

An engineer must configure Cisco UCS Manager to accept only HTTPS connections that use TLS 1.2. The cipher security level must be high and the length of the keying key value must be 2048 bits. Drag and drop the code snippets from the right onto the blanks in the code on the left to accomplish these goals. Not all commands are used.

<pre>scope security create keyring ciscokring set modulus commit-buffer scope system scope services enable https set https port 8443 set https set https cipher-suite-mode set https ssl-protocol</pre>	<div>keyring ciscokring</div> <div>high-strength</div> <div>1024 bits</div> <div>mod2048</div> <div>tls1-2</div> <div>secure</div>
---	--

- A. Mastered
- B. Not Mastered

Answer: A

Explanation:

Graphical user interface, application Description automatically generated

NEW QUESTION 229

A customer undergoes an IT security review assessment. The auditor must have read-only access to the Cisco Nexus 9000 Series Switch to perform the configuration review. The customer implements this security role for the auditor:

role name audit

rule 1 permit command * rule 2 - Output omitted username auditor password C4SAFF0B96EB0045\$c0 role audit Which configuration snippet must complete the configuration?

- A. deny command write*
- B. permit command enable
- C. permit command show *
- D. deny command configure terminal

Answer: D

NEW QUESTION 234

An engineer is implementing NetFlow on a Cisco Nexus 7000 Series Switch. Drag and drop the NetFlow commands from the left into the correct order they must be entered on the right.

N7K-1(config)# interface <interface> N7K-1(config-if)# ip flow monitor NetflowMonitor input	Step 1
N7K-1(config)# feature netflow	Step 2
N7K-1(config)# flow exporter NetflowMonitor N7K-1(config)# flow record NetflowMonitor	Step 3
N7K-1(config)# flow monitor NetflowMonitor	Step 4

- A. Mastered
- B. Not Mastered

Answer: A

Explanation:

- 1- feature netflow
- 2- flow exporter
- 3- flow monitor
- 4- interface<interface>

NEW QUESTION 237

An engineer implements an ACI fabric and must implement microsegmentation of endpoints within the same IP subnet using a network-based attribute. The attribute mapping must allow IP subnet independence. Which attribute must be selected?

- A. MAC address
- B. Custom
- C. Tag
- D. IP

Answer: D

Explanation:

If you want to use a network-based attribute and classify IP addresses in the same subnet, you must use the MAC-based network attribute. IP-based microsegmented EPGs do not support classification for IP addresses in the same subnet.

https://www.cisco.com/c/en/us/td/docs/switches/datacenter/aci/apic/sw/3-x/virtualization/b_ACI_Virtualization_

NEW QUESTION 241

Refer to the exhibit.

```
Start time: Mon Apr 15 09:23:01 2019
Last election time: Mon Apr 15 09:24:24 2019
A: UP, PRIMARY
B: UP, SUBORDINATE
A: memb state UP, lead state PRIMARY, mgmt services state: UP
B: memb state UP, lead state SUBORDINATE, mgmt services state: UP
heartbeat state PRIMARY_OK
INTERNAL NETWORK INTERFACES:
eth1, UP
eth2, UP
HA NOT READY
No device connected to this Fabric Interconnect
```

What be connected to clear the HA NOT READY status?

- A. server chassis
- B. network uplinks
- C. management ports
- D. Layer 1-Layer 2 ports

Answer: A

NEW QUESTION 244

An engineer configures an intersight virtual application and must claim over 200 targets. The engineer starts the Claim target procedure. The engineer has prepared this initial comma-separated value file to provision the targets:

```
UCSFI,10.1.1.3,user-1,pwd5516b817
IMC,10.1.1.5/26,user-2,pwdc65b1c43f
HX,10.1.2.1/30,user-3,pwd39860437
UCSD,1.1.1.1,user-4,pwd5003c9d5
```

Which Information must be included In the comma-separated value flit to provision the targets?

- A. FQON, AD name, IP address, email
- B. location, address, nam
- C. password
- D. certificate, user name, passwor
- E. email
- F. target type, hostname or P address, user name, password

Answer: A

NEW QUESTION 249

Refer to the exhibit.

An engineer must configure a Fibre Channel device alias named TEST for a device attached to port fc1/9 of a Cisco Nexus Series Switch. Which command set completes the configuration?

A)

```
SITE-A-MDS-Fabric-A# configure terminal
SITE-A-MDS-Fabric-A (config)# device-alias database
SITE-A-MDS-Fabric-A (config-device-alias-db)# device-alias name TEST pwwn 50:00:14:42:d0:0c:f5:20
SITE-A-MDS-Fabric-A (config-device-alias-db)# device-alias commit
```

B)

```
SITE-A-MDS-Fabric-A# configure terminal
SITE-A-MDS-Fabric-A (config)# device-alias database
SITE-A-MDS-Fabric-A (config-device-alias-db)# device-alias name TEST pwwn 50:00:14:42:d0:0c:f5:20
SITE-A-MDS-Fabric-A (config-device-alias-db)# exit
```

C)

```
SITE-A-MDS-Fabric-A# configure terminal
SITE-A-MDS-Fabric-A (config)# device-alias database
SITE-A-MDS-Fabric-A (config-device-alias-db)# device-alias name TEST pwwn 50:00:14:40:47:b0:0c:f5
SITE-A-MDS-Fabric-A (config-device-alias-db)# exit
```

D)

```
SITE-A-MDS-Fabric-A# device-alias database
SITE-A-MDS-Fabric-A (device-alias-db)# device-alias name TEST pwwn 50:00:14:40:47:b0:0c:f5
SITE-A-MDS-Fabric-A (config-device-alias-db)# device-alias commit
```

- A. Option A
- B. Option B
- C. Option C
- D. Option D

Answer: B

NEW QUESTION 250

Refer to the exhibit.

```
int fc1/1-2
switchmode rate dedicated
channel-group 100 force
no shut

int san-port-channel 100
switchport trunk allowed vsan 1
switchport trunk allowed vsan add 100
```

An engineer is connecting a Cisco MDS 9700 Series Multilayer Director to a downstream Cisco Nexus 5672UP switch. Which command set must be used to complete the configuration?

A)

```
int san-port-channel 100
switchport mode te
switchport trunk mode off
channel mode on
```

B)

```
int san-port-channel 100
switchport mode te
switchport trunk mode auto
channel mode on
```

C)

```
int san-port-channel 100
switchport mode e
switchport trunk mode on
channel mode active
```

D)

```
int port-channel 100
switchport mode e
switchport trunk mode on
channel mode active
```

- A. Option A
- B. Option B
- C. Option C
- D. Option D

Answer: A

NEW QUESTION 253

An engineer is converting a Cisco MDS switch to support NPIV mode. What should be considered when implementing the solution?

- A. It must be enabled on VSAN 1 only.
- B. It must be enabled globally on all VSANs.
- C. It requires mapping of external interface traffic.
- D. It requires the FLOGI database to be disabled.

Answer: B

Explanation:

https://www.cisco.com/c/en/us/td/docs/switches/datacenter/mds9000/sw/5_0/configuration/guides/int/nxos/cli_i

NEW QUESTION 255

An engineer is asked to manage a large-scale data center and collect information from multiple Cisco NX-OS devices using Cisco NX-OS Data Management Engine model. Which technology should be used to accomplish this goal?

- A. NX-API REST
- B. NETCONF
- C. JSON-RPC
- D. NX Yang

Answer: A

Explanation:

https://www.cisco.com/c/en/us/td/docs/switches/datacenter/nexus9000/sw/7-x/programmability/guide/b_Cisco_Nexus_9000_Series_NX-OS_Programmability_Guide_7x/b_Cisco_Nexus_9000_Series_NXOS_Programmability_Guide_7x_chapter_010001.pdf

NEW QUESTION 257

An engineer is configuring HTTPS access to Cisco UCS Manager. The engineer created a keyring and created the certificate request for the keyring. Cisco UCS Manager continues to receive untrusted messages from a Firefox browser and a Chrome browser. Which action must be taken as the next step in the HTTPS access configuration?

- A. Create a trusted point
- B. Sign the certificate using the Cisco UCS Manager.
- C. Obtain a validated certificate from Cisco
- D. Install a trusted certificate in the browser store

Answer: A

NEW QUESTION 259

Drag and drop the characteristics from the left onto the NAS protocols on the right. Some characteristics are used more than once.

used to boot VHDX files

used to boot VMDK files

uses lease-based model for file locking

used to provide shared storage for hypervisors

NFS

SMB/CIFS

- A. Mastered
- B. Not Mastered

Answer: A

Explanation:

Diagram Description automatically generated

NFS:

- Used to boot VMDK files
 - Uses lease-based model for file locking
 - Used to provide shared storage for hypervisors
- SMB/CIFS:
- Used to boot VHDX files
 - Used to provide shared storage for hypervisors

NEW QUESTION 260

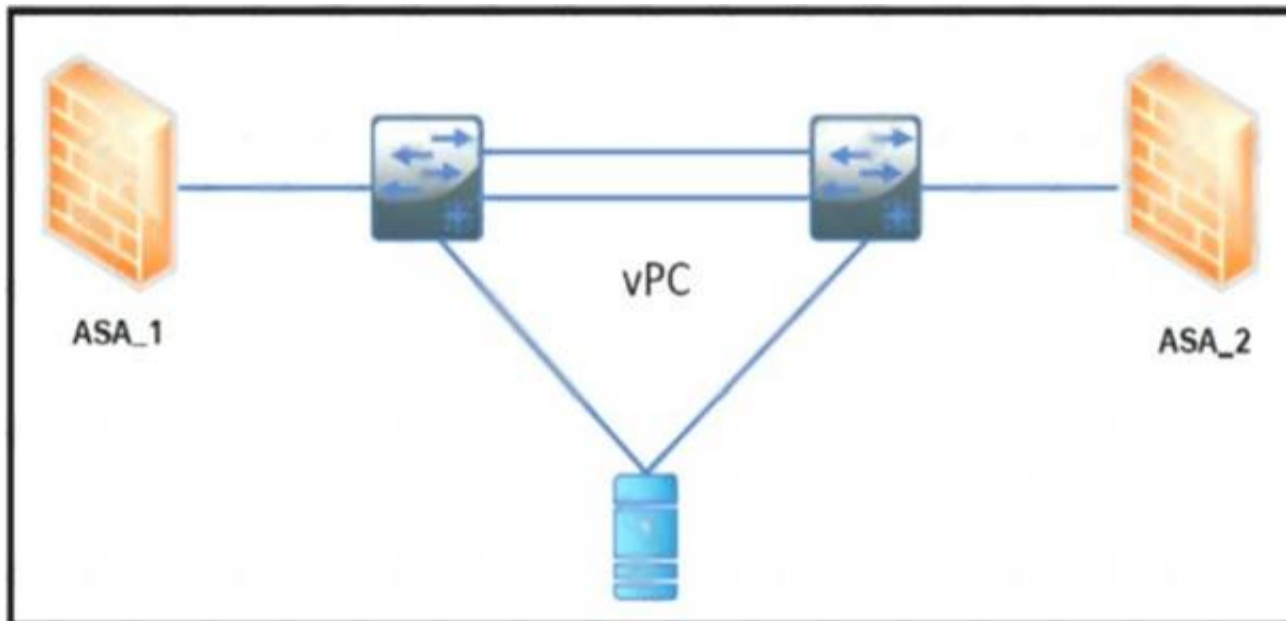
A network administrator must create a Linux container on a Cisco Nexus Series Switch. The container requires 10 percent of the CPU of the switch and 1024 MB of RAM to run successfully. Which task provides the necessary resources?

- A. Edit the container properties with the guestshell run command.
- B. Increase the compute resources with the guestshell resize command.
- C. Enable the Bash shell of the switch with the feature bash command
- D. Modify resource allocation with the virtual-service resize command.

Answer: B

NEW QUESTION 265

Refer to the exhibit



The ASA 1 acts as a Layer 3 gateway for all servers. The servers lose the gateway connectivity when the vPC peer links go down and the vPC keepalive remains up. Which action improves the high availability in the network?

- A. Create a static port channel with two links from each firewall to the switch
- B. Activate the vPC orphan-port suspend feature on the switch ports connected to the firewall
- C. Implement the IP reoVect feature on the vPC devices
- D. Enable the vPC peer gateway feature on the vPC devices

Answer: D

NEW QUESTION 270

Refer to the exhibit.

```
import time
import cli

date= time.strftime('%Y%m%d')
file= ('fusion-config_') + date
cli.execute ('copy running-config ftp://10.183.249.182/FusionSW/' + file)
exit()
```

What is the result of executing this python code?

- A. It backs up Cisco switches to Cisco Prime infrastructure.
- B. It sends the switch configuration to Cisco TAC.
- C. It sends a Cisco device backup to a remote destination.
- D. It schedules a backup on a Cisco switch using EEM.

Answer: C

NEW QUESTION 273

A customer asks an engineer to develop an orchestration solution to automate repetitive tasks. The customer operations team must integrate the tool with its existing automation framework. The customer asks for the tool to support these requirements:

- The customer's security requirements mandate the use of SSH transport.
 - No extra software must be installed on the managed systems.
 - The support staff has limited knowledge of scripting languages, so the solution must be easy to read and use declarative language.
- Which solution meets these requirements?

- A. PowerShell
- B. Ansible
- C. Chef
- D. Puppet

Answer: B

NEW QUESTION 277

An engineer must generate a Cisco UCS Manager backup. The backup should include all logical configuration and contain all system and logical configuration settings. Which backup type should be selected to meet these requirements?

- A. system configuration
- B. logical configuration
- C. all configuration
- D. full state

Answer: C

NEW QUESTION 278

An engineer must implement a new VRF that permits communication between all endpoint groups (EPGs) by default. The new EPGs and bridge domains (BDs) that are created in the new VRF must not require additional configuration to permit traffic between the newly created EPGs or BDs. Which action accomplishes this goal?

- A. Provide and consume a permit any contract on the VRF level
- B. Create a VRF in the common tenant.
- C. Place all EPGs in the preferred group.
- D. Implement a global contract.

Answer: C

NEW QUESTION 283

Refer to the exhibit.

```
MDSSWITCH# config terminal
MDSSWITCH(config)# fcip profile 1
MDSSWITCH(config-profile)# ip address 192.0.1.10
MDSSWITCH(config-profile)# port 5000
MDSSWITCH(config-profile)# tcp max-bandwidth-mbps 5000
min-available-bandwidth-mbps 4000 round-trip-time-ms 1
MDSSWITCH(config-profile)# exit
MDSSWITCH(config)# interface fcip 1
MDSSWITCH(config-if)# use-profile 1
MDSSWITCH(config-if)# peer-info ipaddr 192.0.1.11
MDSSWITCH(config-if)# tcp-connections 1
MDSSWITCH(config-if)# ip-compression mode2
MDSSWITCH(config-if)# no shutdown
MDSSWITCH(config-if)# exit
MDSSWITCH(config)# interface ipStorage 1/1
MDSSWITCH(config-if)# ip address 192.0.1.10 255.255.255.0
MDSSWITCH(config-if)# switchport mtu 2500
MDSSWITCH(config-if)# no shutdown
MDSSWITCH(config-if)# end
```

An engineer configures FCIP on a Cisco MDS 9000 Series switch. What is the result of implementing the configuration?

- A. The switch attempts to make two TCP connections
- B. Compression is performed by using hardware
- C. Mode2 is enabled by default.
- D. Compression is performed by using software.

Answer: B

Explanation:

https://www.cisco.com/c/en/us/td/docs/switches/datacenter/mds9000/sw/8_x/config/ip_services/ipsvc/cfcip.html

NEW QUESTION 287

A network engineer must configure a power redundancy policy on a Cisco UCS C-Series Rack Server. The power redundancy must support two power sources being used to power the server. Which configuration should be applied to meet the requirement?

- Ⓐ server# scope org /
server /org # scope psu-policy
server /org/psu-policy # set redundancy N+1
server /org/psu-policy* # commit-buffer
- Ⓑ server# scope org /
server /org # scope psu-policy
server /org/psu-policy # set psu-redundancy-policy grid
server /org/psu-redundancy-policy* # commit-buffer
- Ⓒ server# scope org /
server /org # scope psu-policy
server /org/psu-policy # set psu-redundancy-policy N+1
server /org/psu-redundancy-policy* # commit-buffer
- Ⓓ server# scope org /
server /org # scope psu-policy
server /org/psu-policy # set redundancy grid
server /org/psu-policy* # commit-buffer

- A. Option A
- B. Option B
- C. Option C
- D. Option D

Answer: D

Explanation:

https://www.cisco.com/c/en/us/td/docs/unified_computing/ucs/ucs-manager/CLI-User-Guides/Server-Mgmt/3-1 The command "N+1" is invalid. The command should be "n-plus-1"

	Command or Action	Purpose
Step 1	UCS-A# scope org <i>org-name</i>	Enters organization mode for the specified organization. To enter the root organization mode, type / as the org-name .
Step 2	UCS-A /org # scope psu-policy	Enters PSU policy mode.
Step 3	UCS-A /org/psu-policy # set redundancy (grid n-plus-1 non-redund)	Specifies one of the following redundancy types: <ul style="list-style-type: none"> • grid –Two power sources are turned on, or the chassis requires greater than N+1 redundancy. If one source fails (which causes a loss of power to one or two PSUs), the surviving PSUs on the other power circuit continue to provide power to the chassis. • n-plus-1 –The total number of PSUs to satisfy non-redundancy, plus one additional PSU for redundancy, are turned on and equally share the power load for the chassis. If any additional PSUs are installed, Cisco UCS Manager sets them to a "turned-off" state. • non-redund –All installed power supplies (PSUs) are turned on and the load is evenly balanced. Only smaller configurations (requiring less than 2500W) can be powered by a single PSU. For more information about power redundancy, see the <i>Cisco UCS 5108 Server Chassis Installation Guide</i> .
Step 4	UCS-A /org/psu-policy # commit-buffer	Commits the transaction to the system configuration.

NEW QUESTION 289

An engineer must implement a solution that prevents untrusted DHCP servers from compromising the network. The feature must be configured on a Cisco Nexus 7000 Series Switch and applied to VLAN 10. The legitimate DHCP servers are connected to interface Ethernet 2/4. Which configuration set must be used to meet these requirements?

- ☐ n7k-1(config)# ip dhcp snooping vlan 10
n7k-1(config)# interface Ethernet2/4
n7k-1(config-if)# ip dhcp snooping trust
- ☒ n7k-1(config)# ip dhcp snooping vlan 10
n7k-1(config)# interface Ethernet2/4
n7k-1(config-if)# ip dhcp snooping verify vlan 10
- ☐ n7k-1(config)# ip dhcp snooping verify
n7k-1(config)# interface Ethernet2/4
n7k-1(config-if)# ip dhcp snooping verify vlan 10
- ☐ n7k-1(config)# ip dhcp snooping verify
n7k-1(config)# vlan configuration 10
n7k-1(config-vlan)# ip dhcp snooping trust

- A. Option A
- B. Option B
- C. Option C
- D. Option D

Answer: A

NEW QUESTION 293

An engineer must configure Cisco Nexus 9000 Series Switches for Cisco UCS Director integration. The configuration must enable automated onboarding of the switches as they come online. For security purposes, the switches must have the bare minimum of connection methods enabled. The connection protocol must allow authentication through credentials. Which protocol must be configured on the switches to allow automated onboarding?

- A. SNMP
- B. Telnet
- C. SSH
- D. HTTPS

Answer: C

NEW QUESTION 294

An engineer must generate a checkpoint of the running configuration on a Cisco Nexus Switch. The checkpoint file name must be called "before_maintenance" and should be used for recovering the switch to its pre- maintenance state. The rollback of the checkpoint to running configuration should only occur if no errors occur. Which two configuration commands must be used to meet these requirements? (Choose two.)

- A. rollback checkpoint file before_maintenance stop-at-first-failure
- B. rollback running-conf checkpoint before.maintenance
- C. checkpoint file before_maintenance

- D. checkpoint before.maintenance
- E. rollback running-confli file before_maintenance atomic

Answer: CE

NEW QUESTION 297

An engineer is implementing FCoE. Which aspect of DCBXP on a Cisco Nexus switch affects this implementation?

- A. It uses the Cisco Fabric Services protocol to exchange parameters between two peer links.
- B. It always is enabled on 10/100-Mbps native Ethernet ports.
- C. It provides the authentication of peers on the Cisco Nexus switch.
- D. It requires that LLDP transmit and LLDP receive are enabled on the FCoE interface.

Answer: D

Explanation:

The Data Center Bridging Exchange Protocol (DCBXP) is an extension of LLDP. It is used to announce, exchange, and negotiate node parameters between peers. DCBXP parameters are packaged into a specific DCBXP TLV. This TLV is designed to provide an acknowledgement to the received LLDP packet. DCBXP is enabled by default, provided LLDP is enabled. DCBXP is disabled on ports where LLDP transmit or receive is disabled.
https://www.cisco.com/c/en/us/td/docs/switches/datacenter/nexus5000/sw/layer2/503_n2_1/b_Cisco_n5k_layer2

NEW QUESTION 300

An engineer is implementing traffic monitoring for a server vNIC that is configured with fabric failover enabled. The requirement is for the traffic to be sent to an analyzer, even during a failure of one of the fabric interconnects. The analyzer is connected to unconfigured Ethernet ports on both fabric interconnects. Which configuration accomplishes this task?

- A. Create two traffic monitoring session with different names, one per fabric Connect the analyzer connected to FI-BI the destination for both monitoring sessions.
- B. Create two traffic monitoring session with different names, one per fabric.
- C. Connect an analyser on each FI as the destination for the monitoring session local to the FI.
- D. Create two traffic monitoring sessions with the same name, one per fabric Connect the analyze connected to FI-A as the destination for both monitoring sessions

Answer: A

NEW QUESTION 302

An engineer is configuring a vHBA template in UCS Manager. The engineer needs to specify the logical addresses used by the vHBA and the path through which the SAN traffic flows. Which two resources must be specified in the vHBA template? (Choose two.)

- A. MAC addresses
- B. WWPNPool
- C. WWNN
- D. VLAN ID
- E. Fabric ID

Answer: BE

Explanation:

vNIC and vHBA Templates

vNIC and vHBA resources are always associated with specific FIs (A-side or B-side fabric interconnect). A typical Service Profile has at least two vNICs and two vHBAs; one bound to each side. vNIC (or vHBA) templates can be used to encapsulate both the MAC address pool (or WWPN pool) association as well as the fabric ID

Best Practice: vNIC and vHBA Templates

Create reusable vNIC and vHBA templates in which termination is either reflected in the name (e.g., "fc0-A") or through well-accepted conventions (e.g., even interface to A side, and odd interface to B side).

vNIC templates should be thought of as application-specific network profiles that include important security definitions, such as VLAN mappings, as shown in Figure 6.

https://www.cisco.com/c/en/us/products/collateral/servers-unified-computing/ucs-manager/whitepaper_c11-697

NEW QUESTION 303

An engineer must remove the running configuration of a Cisco Nexus 9000 Series Switch and replace it with a backup file without restarting the switch. The backup file is stored on an SFTP server that is reachable via the An engineer must remove the running configuration mgmt0 interface Which set of commands accomplishes this task'

- ☐ copy sftp://admin@192.168.10.100/backup.cfg startup-config vrf mgmt0
copy startup-config running-config
- ☐ configure replace sftp://admin@192.168.10.100/backup.cfg vrf mgmt0
copy running-config bootflash://startup-config
- ☐ copy sftp://admin@192.168.10.100/backup.cfg bootflash:///backup.cfg vrf management
configure replace bootflash:///backup.cfg
- ☐ copy sftp://admin@192.168.10.100/backup.cfg startup-config vrf management
reload in 10

- A. Option A
- B. Option B
- C. Option C
- D. Option D

Answer: C

NEW QUESTION 305

A network engineer needs a tool to automate the provisioning of Cisco UCS Service Profiles. The administrator has limited programming knowledge but is skilled with scripting tools. The tool must include existing support for Cisco UCS configuration. Additionally, the administrator will eventually use the solution to manage Cisco UCS C-Series Rack Servers. Which tool meets these requirements?

- A. Cisco DCNM
- B. Python scripts
- C. PowerShell
- D. Bash scripts

Answer: C

NEW QUESTION 308

A network engineer must implement a telemetry solution to collect real-time structured data in a large-scale network. Drag and drop the actions from the left into the order on the right to implement the solution. Not all actions are used.

Configure the flow monitor and flow record.	step 1
Set the format and destination to which the data is sent.	step 2
Configure the data to be collected as part of the sensor group.	step 3
Set the subscription between the sensor group and the destination.	

- A. Mastered
- B. Not Mastered

Answer: A

Explanation:

- * 1. set the format and destination to which the data is sent.
- * 2. configure the data to be collected as part of the sensor group.
- * 3. set the subscription between the sensor-group and the destination.

NEW QUESTION 310

What is an advantage of using Ansible for automation as compared to puppet and chef?

- A. Ansible automates the enforcement of configuration settings.
- B. Ansible perform automation without installing a software agent on the target node.
- C. Ansible configures a set of CLI commands on a device by using NETCONF.
- D. Ansible abstracts a scenario so that set of configuration setting can be used across multiple operating systems.

Answer: B

NEW QUESTION 314

Refer to the exhibit.

```
N7K-1
interface Vlan165
  no shutdown
  no ip redirects
  ip address 10.16.165.2/27
  no ipv6 redirects
  hsrp version 2
  hsrp 165
    preempt
    priority 150
    ip 10.16.165.1

vpc domain 100
  role priority 100
  peer-keepalive destination 10.1.1.2 source 10.1.1.1
vrf default
  delay restore 60
  peer-gateway
  auto-recovery
  ip arp synchronize

N7K-2
interface Vlan165
  no shutdown
  no ip redirects
  ip address 10.16.165.3/27
  no ipv6 redirects
  hsrp version 2
  hsrp 165
    priority 50
    ip 10.16.165.1

vpc domain 100
  role priority 200
  peer-keepalive destination 10.1.1.1 source 10.1.1.2
vrf default
  delay restore 60
  peer-gateway
  auto-recovery
  ip arp synchronize
```

Which statement describes the default gateway configuration of the vPC?

- A. N7K-1 acts as the default gateway for all traffic.
- B. N7K-2 forwards traffic that is destined for the default gateway by using the peer link.
- C. N7K-2 acts as the default gateway for all traffic.
- D. Either switch can act as the active default gateway.

Answer: D

Explanation:

<https://community.cisco.com/t5/networking-documents/peer-gateway-feature-on-the-nexus-7000/ta-p/3113290>

NEW QUESTION 317

A company provides applications and database hosting services to multiple customers using isolated infrastructure-as-a-service services within the same data center environment. The environment is based on Cisco MDS 9000 Series Switches. The requirement is to manage the environment by using Fibre Channel Security Protocol and to enable user authentication when the centralized AAA server is unreachable. All communication between the MDS switches and the remote servers must be encrypted. Which command set must be used to meet these requirements?

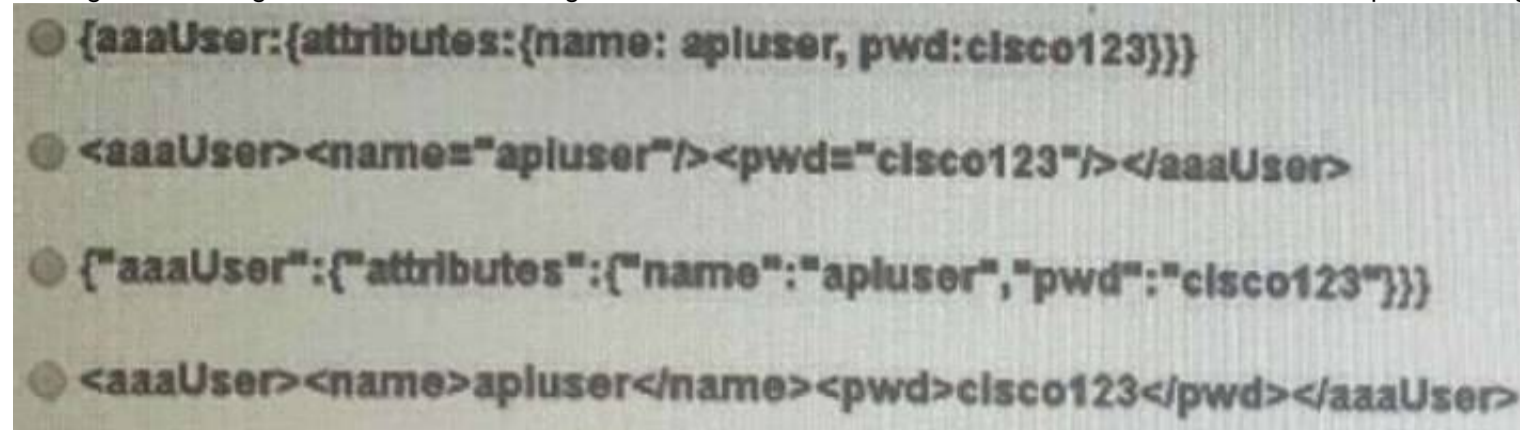
- ☒ `aaa group server radius RadiusServer1`
`aaa authentication login default RadiusServer1`
- ☐ `aaa group server radius RadiusServer1`
`aaa authentication dhchap default group RadiusServer1`
- ☐ `aaa group server tacacs+ TacacsServer1`
`aaa authentication dhchap default group TacacsServer1`
- ☐ `aaa group server tacacs+ TacacsServer1`
`aaa authentication login console TacacsServer1`

- A. Option A
- B. Option B
- C. Option C
- D. Option D

Answer: B

NEW QUESTION 319

An engineer is using REST API calls to configure the cisco APIC. Which data structure must be used within a post message to receive a login token?



- A. Option A
- B. Option B
- C. Option C
- D. Option D

Answer: C

Explanation:

- **aaaListDomains** –Sent as a GET message, this method returns a list of valid AAA login domains. You can send this message without logging in.

You can call the authentication methods using this syntax, specifying either JSON or XML data structures:

```
{ http | https } :// host [:port] /api/ methodName . { json | xml }
```

This example shows a user login message that uses a JSON data structure:

```
POST https://apic-ip-address/api/aaaLogin.json
```

```
{
  "aaaUser" : {
    "attributes" : {
      "name" : "georgewa",
      "pwd" : "paSSword1"
    }
  }
}
```

https://www.cisco.com/c/en/us/td/docs/switches/datacenter/aci/apic/sw/2-x/rest_cfg/2_1_x/b_Cisco_APIC_REST_API_Configuration_Guide/b_Cisco_APIC_REST_API_Configuration_Guide_chapter_0

NEW QUESTION 321

A bridge domain is being extended out of a Cisco ACI fabric. Between which of these components are policies used to identify the connectivity between Endpoint Groups and the external connection?

- A. an external bridge domain and an external routed domain
- B. internal contracts and external contracts
- C. internal EPGs and external EPGs
- D. L2Out and L3Out

Answer: D

NEW QUESTION 324

Refer to the exhibit.

```
Nexus(config)# show checkpoint summary
User Checkpoint Summary
-----
1) BeforeL3:
Created by admin
Created at Mon, 15:25:08 31 Dec 2018
Size is 9,345 bytes
Description: None

System Checkpoint Summary
-----
2) system-fm-vrrp:
Created by admin
Created at Fri, 09:57:02 14 Jun 2019
Size is 20,865 bytes
Description: Created by Feature Manager.

3) system-fm-hsrp_engine:
Created by admin
Created at Fri, 09:57:28 14 Jun 2019
Size is 20,852 bytes
Description: Created by Feature Manager.
```

What is the reason the system-fm-vrrp checkpoint was created?

- A. The VRRP service restarted and the checkpoint was automatically created.
- B. The network administrator manually created it.
- C. The VRRP process crashed and the checkpoint was automatically created.
- D. The VRRP-enable feature has been disabled.

Answer: D

Explanation:

automatically created by the Nexus when the vrrp feature is disabled

NEW QUESTION 326

Which service profile is affected if the default host firmware policy in Cisco UCS Manager is changed?

- A. any service profile that has no host firmware policy defined
- B. any service profile that uses a user-created host firmware policy
- C. any service profile that is not in the root sub-org
- D. any service profile that uses the global-default host firmware policy

Answer: A

Explanation:

https://www.cisco.com/c/en/us/td/docs/unified_computing/ucs/ucs-manager/GUI-User-Guides/Firmware-Mgmt/3-1/b_UCSM_GUI_Firmware_Management_Guide_3_1/b_UCSM_GUI_Firmware_Management_Guide_3_1_chapter_011.html

NEW QUESTION 331

Port security is enabled on a Cisco MDS 9000 series Switch. Which statement is true?

- A. Cisco Fabric Services must be disabled before enabling port security.
- B. Port security can be enabled only globally and affects all VSANs.
- C. Auto-learning is always enabled automatically when port security is enabled.
- D. Any devices currently logged in must be added manually to the device databased.

Answer: C

Explanation:

https://www.cisco.com/c/en/us/td/docs/switches/datacenter/mds9000/sw/8_x/config/security/cisco_mds9000_security_config_guide_8x/configuring_port_security.html

- **Active database:** The database currently enforced by the device. The port security feature requires all devices connecting to a switch to be part of the port security active database. The software uses this active database to enforce authorization.

About Auto-Learning

You can instruct the switch to automatically learn (auto-learn) the port security configurations over a specified period. This feature allows any switch in the Cisco MDS 9000 Family to automatically learn about devices and switches that connect to it. Use this feature when you activate the port security feature for the first time as it saves tedious manual configuration for each port. You must configure auto-learning on a per-VSAN basis. If enabled, devices and switches that are allowed to connect to the switch are automatically learned, even if you have not configured any port access.

When auto-learning is enabled, learning happens for the devices or interfaces that were already logged into the switch and the new devices or interfaces that need to be logged in. Learned entries on a port are cleaned up after you shut down that port if auto-learning is still enabled.

Learning does not override the existing configured port security policies. So, for example, if an interface is configured to allow a specific pWWN, then auto-learning will not add a new entry to allow any other pWWN on that interface. All other pWWNs will be blocked even in auto-learning mode.

No entries are learned for a port in the shutdown state.

When you activate the port security feature, auto-learning is also automatically enabled.



Note

If you activate port security feature, auto-learning gets enabled by default. You cannot re-activate port security until auto-learning is disabled or deactivate and activate again.

Port Security Activation

By default, the port security feature is not activated in any switch in the Cisco MDS 9000 Family.

By activating the port security feature, the following apply:

- Auto-learning is also automatically enabled, which means:
 - From this point, auto-learning happens for the devices or interfaces that were already logged into the switch and also for the new devices will login in future.
 - You cannot activate the database until you disable auto-learning.
- All the devices that are already logged in are learned and are added to the active database.
- All entries in the configured database are copied to the active database.

After the database is activated, subsequent device login is subject to the activated port bound WWN pairs, excluding the auto-learned entries. You must disable auto-learning before the auto-learned entries become activated.

When you activate the port security feature, auto-learning is also automatically enabled. You can choose to activate the port security feature and disable auto-learning.

NEW QUESTION 332

Which file service protocol allows the files to appear locally mapped to the client and provides view, store, and update capabilities on a remote Linux-based storage repository that also serves as a distributed file system standard for NAS?

- A. NFS
- B. FTP
- C. iSCSI
- D. IFS

Answer: D

NEW QUESTION 334

A network engineer must restore the running configuration on a Cisco Nexus 5000 Series Switch to an existing snapshot called "stable1". The restore procedure should proceed only if no errors occur. Which configuration should be used to accomplish this goal?

- ☐ rollback running-config checkpoint stable1 best-effort
- ☒ rollback checkpoint stable1 best-effort running-config atomic
- ☐ rollback checkpoint stable1 best-effort running-config best-effort
- ☐ rollback running-config checkpoint stable1 atomic

- A. Option A
- B. Option B
- C. Option C
- D. Option D

Answer: D

NEW QUESTION 337

An infrastructure architect is analyzing the deployment type for an application. Several companies must be able to operate the application environment and

integrate it with a third-party protocol. The development team also must have maximum control over their development environment, Including the operating system used, Python interpreter, and corresponding libraries. Which cloud deployment solution meets these requirements?

- A. public cloud Storage as a Service
- B. private cloud Platform as a Service
- C. hybrid cloud Software as a Service
- D. community cloud Infrastructure as a Service

Answer: D

NEW QUESTION 341

An engineer must configure a VDS port group using APIC policy. The requirements are for the frames to be mapped to a particular Layer 2 network and for the virtual machine assigned to the port group to receive all frames passed on the virtual switch. Which two settings must be used to meet these requirements? (Choose two.)

- A. forged transmits
- B. VMDirectPath
- C. port binding
- D. promiscuous mode
- E. VLAN

Answer: CD

NEW QUESTION 345

.....

Thank You for Trying Our Product

We offer two products:

1st - We have Practice Tests Software with Actual Exam Questions

2nd - Questions and Answers in PDF Format

350-601 Practice Exam Features:

- * 350-601 Questions and Answers Updated Frequently
- * 350-601 Practice Questions Verified by Expert Senior Certified Staff
- * 350-601 Most Realistic Questions that Guarantee you a Pass on Your First Try
- * 350-601 Practice Test Questions in Multiple Choice Formats and Updates for 1 Year

100% Actual & Verified — Instant Download, Please Click
[Order The 350-601 Practice Test Here](#)