

Exam Questions 156-315.81

Check Point Certified Security Expert R81

<https://www.2passeasy.com/dumps/156-315.81/>



NEW QUESTION 1

- (Exam Topic 1)

Which is NOT an example of a Check Point API?

- A. Gateway API
- B. Management API
- C. OPSC SDK
- D. Threat Prevention API

Answer: A

NEW QUESTION 2

- (Exam Topic 1)

Which of the SecureXL templates are enabled by default on Security Gateway?

- A. Accept
- B. Drop
- C. NAT
- D. None

Answer: D

NEW QUESTION 3

- (Exam Topic 1)

SSL Network Extender (SNX) is a thin SSL VPN on-demand client that is installed on the remote user's machine via the web browser. What are the two modes of SNX?

- A. Application and Client Service
- B. Network and Application
- C. Network and Layers
- D. Virtual Adapter and Mobile App

Answer: B

NEW QUESTION 4

- (Exam Topic 1)

fwssd is a child process of which of the following Check Point daemons?

- A. fwd
- B. cpwd
- C. fwm
- D. cpd

Answer: A

NEW QUESTION 5

- (Exam Topic 1)

You can select the file types that are sent for emulation for all the Threat Prevention profiles. Each profile defines a(n) _____ or _____ action for the file types.

- A. Inspect/Bypass
- B. Inspect/Prevent
- C. Prevent/Bypass
- D. Detect/Bypass

Answer: A

NEW QUESTION 6

- (Exam Topic 1)

Which command collects diagnostic data for analyzing customer setup remotely?

- A. cpinfo
- B. migrate export
- C. sysinfo
- D. cpview

Answer: A

Explanation:

CPInfo is an auto-updatable utility that collects diagnostics data on a customer's machine at the time of execution and uploads it to Check Point servers (it replaces the standalone cp_uploader utility for uploading files to Check Point servers).

The CPInfo output file allows analyzing customer setups from a remote location. Check Point support engineers can open the CPInfo file in a demo mode, while viewing actual customer Security Policies and Objects. This allows the in-depth analysis of customer's configuration and environment settings.

NEW QUESTION 7

- (Exam Topic 1)

What has to be taken into consideration when configuring Management HA?

- A. The Database revisions will not be synchronized between the management servers
- B. SmartConsole must be closed prior to synchronized changes in the objects database
- C. If you wanted to use Full Connectivity Upgrade, you must change the Implied Rules to allow FW1_cpredundant to pass before the Firewall Control Connections.
- D. For Management Server synchronization, only External Virtual Switches are supported
- E. So, if you wanted to employ Virtual Routers instead, you have to reconsider your design.

Answer: A

NEW QUESTION 8

- (Exam Topic 1)

Which command can you use to verify the number of active concurrent connections?

- A. fw conn all
- B. fw ctl pstat
- C. show all connections
- D. show connections

Answer: B

NEW QUESTION 9

- (Exam Topic 1)

The CPD daemon is a Firewall Kernel Process that does NOT do which of the following?

- A. Secure Internal Communication (SIC)
- B. Restart Daemons if they fail
- C. Transfers messages between Firewall processes
- D. Pulls application monitoring status

Answer: D

NEW QUESTION 10

- (Exam Topic 1)

What is the mechanism behind Threat Extraction?

- A. This is a new mechanism which extracts malicious files from a document to use it as a counter-attack against its sender.
- B. This is a new mechanism which is able to collect malicious files out of any kind of file types to destroy it prior to sending it to the intended recipient.
- C. This is a new mechanism to identify the IP address of the sender of malicious codes and put it into the SAM database (Suspicious Activity Monitoring).
- D. Any active contents of a document, such as JavaScripts, macros and links will be removed from the document and forwarded to the intended recipient, which makes this solution very fast.

Answer: D

NEW QUESTION 10

- (Exam Topic 1)

Which command will allow you to see the interface status?

- A. cphaprob interface
- B. cphaprob -l interface
- C. cphaprob -a if
- D. cphaprob stat

Answer: C

NEW QUESTION 15

- (Exam Topic 1)

You are working with multiple Security Gateways enforcing an extensive number of rules. To simplify security administration, which action would you choose?

- A. Eliminate all possible contradictory rules such as the Stealth or Cleanup rules.
- B. Create a separate Security Policy package for each remote Security Gateway.
- C. Create network objects that restricts all applicable rules to only certain networks.
- D. Run separate SmartConsole instances to login and configure each Security Gateway directly.

Answer: B

NEW QUESTION 16

- (Exam Topic 1)

What Factor preclude Secure XL Templating?

- A. Source Port Ranges/Encrypted Connections
- B. IPS
- C. ClusterXL in load sharing Mode
- D. CoreXL

Answer: A

NEW QUESTION 19

- (Exam Topic 1)

Full synchronization between cluster members is handled by Firewall Kernel. Which port is used for this?

- A. UDP port 265
- B. TCP port 265
- C. UDP port 256
- D. TCP port 256

Answer: D

Explanation:

Synchronization works in two modes:

Full Sync transfers all Security Gateway kernel table information from one cluster member to another. It is handled by the fwd daemon using an encrypted TCP connection on port 256.

Delta Sync transfers changes in the kernel tables between cluster members. Delta sync is handled by the Security Gateway kernel using UDP connections on port 8116.

NEW QUESTION 24

- (Exam Topic 1)

Your manager asked you to check the status of SecureXL, and its enabled templates and features. What command will you use to provide such information to manager?

- A. fw accel stat
- B. fwaccel stat
- C. fw acces stats
- D. fwaccel stats

Answer: B

NEW QUESTION 27

- (Exam Topic 1)

What happen when IPS profile is set in Detect Only Mode for troubleshooting?

- A. It will generate Geo-Protection traffic
- B. Automatically uploads debugging logs to Check Point Support Center
- C. It will not block malicious traffic
- D. Bypass licenses requirement for Geo-Protection control

Answer: C

Explanation:

It is recommended to enable Detect-Only for Troubleshooting on the profile during the initial installation of IPS. This option overrides any protections that are set to Prevent so that they will not block any traffic.

During this time you can analyze the alerts that IPS generates to see how IPS will handle network traffic, while avoiding any impact on the flow of traffic.

NEW QUESTION 28

- (Exam Topic 1)

Selecting an event displays its configurable properties in the Detail pane and a description of the event in the Description pane. Which is NOT an option to adjust or configure?

- A. Severity
- B. Automatic reactions
- C. Policy
- D. Threshold

Answer: C

NEW QUESTION 30

- (Exam Topic 1)

When requiring certificates for mobile devices, make sure the authentication method is set to one of the following, Username and Password, RADIUS or _____.

- A. SecureID
- B. SecurID
- C. Complexity
- D. TacAcs

Answer: B

NEW QUESTION 34

- (Exam Topic 1)

Which command shows actual allowed connections in state table?

- A. fw tab -t StateTable
- B. fw tab -t connections
- C. fw tab -t connection
- D. fw tab connections

Answer: B

NEW QUESTION 35

- (Exam Topic 1)

Tom has been tasked to install Check Point R81 in a distributed deployment. Before Tom installs the systems this way, how many machines will he need if he does NOT include a SmartConsole machine in his calculations?

- A. One machine, but it needs to be installed using SecurePlatform for compatibility purposes.
- B. One machine
- C. Two machines
- D. Three machines

Answer: C

Explanation:

One for Security Management Server and the other one for the Security Gateway.

NEW QUESTION 36

- (Exam Topic 1)

What is a feature that enables VPN connections to successfully maintain a private and secure VPN session without employing Stateful Inspection?

- A. Stateful Mode
- B. VPN Routing Mode
- C. Wire Mode
- D. Stateless Mode

Answer: C

Explanation:

Wire Mode is a VPN-1 NGX feature that enables VPN connections to successfully fail over, bypassing Security Gateway enforcement. This improves performance and reduces downtime. Based on a trusted source and destination, Wire Mode uses internal interfaces and VPN Communities to maintain a private and secure VPN session, without employing Stateful Inspection. Since Stateful Inspection no longer takes place, dynamic-routing protocols that do not survive state verification in non-Wire Mode configurations can now be deployed. The VPN connection is no different from any other connections along a dedicated wire, thus the meaning of "Wire Mode".

NEW QUESTION 40

- (Exam Topic 1)

In R81, how do you manage your Mobile Access Policy?

- A. Through the Unified Policy
- B. Through the Mobile Console
- C. From SmartDashboard
- D. From the Dedicated Mobility Tab

Answer: A

NEW QUESTION 44

- (Exam Topic 1)

Sticky Decision Function (SDF) is required to prevent which of the following? Assume you set up an Active-Active cluster.

- A. Symmetric routing
- B. Failovers
- C. Asymmetric routing
- D. Anti-Spoofing

Answer: C

NEW QUESTION 49

- (Exam Topic 1)

Which command lists all tables in Gaia?

- A. fw tab -t
- B. fw tab -list
- C. fw-tab -s
- D. fw tab -1

Answer: C

NEW QUESTION 54

- (Exam Topic 1)

When doing a Stand-Alone Installation, you would install the Security Management Server with which other Check Point architecture component?

- A. None, Security Management Server would be installed by itself.
- B. SmartConsole
- C. SecureClient
- D. Security Gateway

E. SmartEvent

Answer: D

NEW QUESTION 58

- (Exam Topic 1)

Which of the following statements is TRUE about R81 management plug-ins?

- A. The plug-in is a package installed on the Security Gateway.
- B. Installing a management plug-in requires a Snapshot, just like any upgrade process.
- C. A management plug-in interacts with a Security Management Server to provide new features and support for new products.
- D. Using a plug-in offers full central management only if special licensing is applied to specific features of the plug-in.

Answer: C

NEW QUESTION 59

- (Exam Topic 1)

R81.10 management server can manage gateways with which versions installed?

- A. Versions R77 and higher
- B. Versions R76 and higher
- C. Versions R75.20 and higher
- D. Versions R75 and higher

Answer: C

NEW QUESTION 64

- (Exam Topic 1)

Check Point recommends configuring Disk Space Management parameters to delete old log entries when available disk space is less than or equal to?

- A. 50%
- B. 75%
- C. 80%
- D. 15%

Answer: D

NEW QUESTION 65

- (Exam Topic 1)

What SmartEvent component creates events?

- A. Consolidation Policy
- B. Correlation Unit
- C. SmartEvent Policy
- D. SmartEvent GUI

Answer: B

NEW QUESTION 69

- (Exam Topic 1)

To fully enable Dynamic Dispatcher on a Security Gateway:

- A. run fw ctl multik set_mode 9 in Expert mode and then Reboot.
- B. Using cpconfig, update the Dynamic Dispatcher value to "full" under the CoreXL menu.
- C. Edit/proc/interrupts to include multik set_mode 1 at the bottom of the file, save, and reboot.
- D. run fw multik set_mode 1 in Expert mode and then reboot.

Answer: A

NEW QUESTION 71

- (Exam Topic 1)

What are the attributes that SecureXL will check after the connection is allowed by Security Policy?

- A. Source address, Destination address, Source port, Destination port, Protocol
- B. Source MAC address, Destination MAC address, Source port, Destination port, Protocol
- C. Source address, Destination address, Source port, Destination port
- D. Source address, Destination address, Destination port, Protocol

Answer: A

NEW QUESTION 73

- (Exam Topic 1)

CPM process stores objects, policies, users, administrators, licenses and management data in a database. The database is:

- A. MySQL

- B. Postgres SQL
- C. MarisDB
- D. SOLR

Answer: B

NEW QUESTION 76

- (Exam Topic 2)

Which of these is an implicit MEP option?

- A. Primary-backup
- B. Source address based
- C. Round robin
- D. Load Sharing

Answer: A

NEW QUESTION 77

- (Exam Topic 2)

Which statements below are CORRECT regarding Threat Prevention profiles in SmartDashboard?

- A. You can assign only one profile per gateway and a profile can be assigned to one rule Only.
- B. You can assign multiple profiles per gateway and a profile can be assigned to one rule only.
- C. You can assign multiple profiles per gateway and a profile can be assigned to one or more rules.
- D. You can assign only one profile per gateway and a profile can be assigned to one or more rules.

Answer: C

NEW QUESTION 82

- (Exam Topic 2)

As an administrator, you may be required to add the company logo to reports. To do this, you would save the logo as a PNG file with the name 'cover-company-logo.png' and then copy that image file to which directory on the SmartEvent server?

- A. \$FWDIR/smartevent/conf
- B. \$RTDIR/smartevent/conf
- C. \$RTDIR/smartview/conf
- D. \$FWDIR/smartview/conf

Answer: C

NEW QUESTION 83

- (Exam Topic 2)

What is the main difference between Threat Extraction and Threat Emulation?

- A. Threat Emulation never delivers a file and takes more than 3 minutes to complete.
- B. Threat Extraction always delivers a file and takes less than a second to complete.
- C. Threat Emulation never delivers a file that takes less than a second to complete.
- D. Threat Extraction never delivers a file and takes more than 3 minutes to complete.

Answer: B

NEW QUESTION 88

- (Exam Topic 2)

Which process is available on any management product and on products that require direct GUI access, such as SmartEvent and provides GUI client communications, database manipulation, policy compilation and Management HA synchronization?

- A. cpwd
- B. fwd
- C. cpd
- D. fwm

Answer: D

Explanation:

Firewall Management (fwm) is available on any management product, including Multi-Domain and on products that require direct GUI access, such as SmartEvent, It provides the following:

- GUI Client communication
- Database manipulation
- Policy Compilation
- Management HA sync

NEW QUESTION 90

- (Exam Topic 2)

Which of the following will NOT affect acceleration?

- A. Connections destined to or originated from the Security gateway
- B. A 5-tuple match

- C. Multicast packets
- D. Connections that have a Handler (ICMP, FTP, H.323, etc.)

Answer: B

NEW QUESTION 95

- (Exam Topic 2)

What is the purpose of a SmartEvent Correlation Unit?

- A. The SmartEvent Correlation Unit is designed to check the connection reliability from SmartConsole to the SmartEvent Server.
- B. The SmartEvent Correlation Unit's task is to assign severity levels to the identified events.
- C. The Correlation unit role is to evaluate logs from the log server component to identify patterns/threats and convert them to events.
- D. The SmartEvent Correlation Unit is designed to check the availability of the SmartReporter Server.

Answer: C

NEW QUESTION 99

- (Exam Topic 2)

What is the protocol and port used for Health Check and State Synchronization in ClusterXL?

- A. CCP and 18190
- B. CCP and 257
- C. CCP and 8116
- D. CPC and 8116

Answer: C

NEW QUESTION 104

- (Exam Topic 2)

Can multiple administrators connect to a Security Management Server at the same time?

- A. No, only one can be connected
- B. Yes, all administrators can modify a network object at the same time
- C. Yes, every administrator has their own username, and works in a session that is independent of other administrators.
- D. Yes, but only one has the right to write.

Answer: C

NEW QUESTION 108

- (Exam Topic 2)

Which of the following is NOT a type of Check Point API available in R81.x?

- A. Identity Awareness Web Services
- B. OPSEC SDK
- C. Mobile Access
- D. Management

Answer: C

NEW QUESTION 110

- (Exam Topic 2)

What information is NOT collected from a Security Gateway in a Cpinfo?

- A. Firewall logs
- B. Configuration and database files
- C. System message logs
- D. OS and network statistics

Answer: A

NEW QUESTION 113

- (Exam Topic 2)

In the Check Point Firewall Kernel Module, each Kernel is associated with a key, which specifies the type of traffic applicable to the chain module. For Wire Mode configuration, chain modules marked with _____ will not apply.

- A. ffff
- B. 1
- C. 2
- D. 3

Answer: B

NEW QUESTION 116

- (Exam Topic 2)

Which configuration file contains the structure of the Security Server showing the port numbers, corresponding protocol name, and status?

- A. \$FWDIR/database/fwauthd.conf
- B. \$FWDIR/conf/fwauth.conf
- C. \$FWDIR/conf/fwauthd.conf
- D. \$FWDIR/state/fwauthd.conf

Answer: C

NEW QUESTION 121

- (Exam Topic 2)

Which encryption algorithm is the least secured?

- A. AES-128
- B. AES-256
- C. DES
- D. 3DES

Answer: C

NEW QUESTION 125

- (Exam Topic 2)

Which command shows the current connections distributed by CoreXL FW instances?

- A. fw ctl multik stat
- B. fw ctl affinity -l
- C. fw ctl instances -v
- D. fw ctl iflist

Answer: A

NEW QUESTION 127

- (Exam Topic 2)

What is a best practice before starting to troubleshoot using the “fw monitor” tool?

- A. Run the command: fw monitor debug on
- B. Clear the connections table
- C. Disable CoreXL
- D. Disable SecureXL

Answer: D

NEW QUESTION 130

- (Exam Topic 2)

Please choose correct command to add an “emailserver1” host with IP address 10.50.23.90 using GAIa management CLI?

- A. host name myHost12 ip-address 10.50.23.90
- B. mgmt: add host name ip-address 10.50.23.90
- C. add host name emailserver1 ip-address 10.50.23.90
- D. mgmt: add host name emailserver1 ip-address 10.50.23.90

Answer: D

NEW QUESTION 132

- (Exam Topic 2)

Which Check Point daemon monitors the other daemons?

- A. fwm
- B. cpd
- C. cpwd
- D. fwssd

Answer: C

NEW QUESTION 135

- (Exam Topic 2)

The Correlation Unit performs all but the following actions:

- A. Marks logs that individually are not events, but may be part of a larger pattern to be identified later.
- B. Generates an event based on the Event policy.
- C. Assigns a severity level to the event.
- D. Takes a new log entry that is part of a group of items that together make up an event, and adds it to an ongoing event.

Answer: C

NEW QUESTION 140

- (Exam Topic 2)

What are the main stages of a policy installations?

- A. Verification & Compilation, Transfer and Commit
- B. Verification & Compilation, Transfer and Installation
- C. Verification, Commit, Installation
- D. Verification, Compilation & Transfer, Installation

Answer: A

NEW QUESTION 145

- (Exam Topic 2)

SmartEvent does NOT use which of the following procedures to identify events:

- A. Matching a log against each event definition
- B. Create an event candidate
- C. Matching a log against local exclusions
- D. Matching a log against global exclusions

Answer: C

Explanation:

Events are detected by the SmartEvent Correlation Unit. The Correlation Unit task is to scan logs for criteria that match an Event Definition. SmartEvent uses these procedures to identify events:

- Matching a Log Against Global Exclusions
- Matching a Log Against Each Event Definition
- Creating an Event Candidate
- When a Candidate Becomes an Event References:

NEW QUESTION 150

- (Exam Topic 2)

What scenario indicates that SecureXL is enabled?

- A. Dynamic objects are available in the Object Explorer
- B. SecureXL can be disabled in cpconfig
- C. fwaccel commands can be used in clish
- D. Only one packet in a stream is seen in a fw monitor packet capture

Answer: C

NEW QUESTION 152

- (Exam Topic 2)

VPN Link Selection will perform the following when the primary VPN link goes down?

- A. The Firewall will drop the packets.
- B. The Firewall can update the Link Selection entries to start using a different link for the same tunnel.
- C. The Firewall will send out the packet on all interfaces.
- D. The Firewall will inform the client that the tunnel is down.

Answer: B

NEW QUESTION 157

- (Exam Topic 2)

When gathering information about a gateway using CPINFO, what information is included or excluded when using the “-x” parameter?

- A. Includes the registry
- B. Gets information about the specified Virtual System
- C. Does not resolve network addresses
- D. Output excludes connection table

Answer: B

NEW QUESTION 159

- (Exam Topic 2)

With Mobile Access enabled, administrators select the web-based and native applications that can be accessed by remote users and define the actions that users can perform the applications. Mobile Access encrypts all traffic using:

- A. HTTPS for web-based applications and 3DES or RC4 algorithm for native application
- B. For end users to access the native applications, they need to install the SSL Network Extender.
- C. HTTPS for web-based applications and AES or RSA algorithm for native application
- D. For end users to access the native application, they need to install the SSL Network Extender.
- E. HTTPS for web-based applications and 3DES or RC4 algorithm for native application
- F. For end users to access the native applications, no additional software is required.
- G. HTTPS for web-based applications and AES or RSA algorithm for native application
- H. For end users to access the native application, no additional software is required.

Answer: A

NEW QUESTION 162

- (Exam Topic 2)

Which directory below contains log files?

- A. /opt/CPSmartlog-R81/log
- B. /opt/CPshrd-R81/log
- C. /opt/CPsuite-R81/fw1/log
- D. /opt/CPsuite-R81/log

Answer: C

NEW QUESTION 165

- (Exam Topic 2)

When setting up an externally managed log server, what is one item that will not be configured on the R81 Security Management Server?

- A. IP
- B. SIC
- C. NAT
- D. FQDN

Answer: C

NEW QUESTION 170

- (Exam Topic 2)

Which command is used to display status information for various components?

- A. show all systems
- B. show system messages
- C. sysmess all
- D. show sysenv all

Answer: D

NEW QUESTION 175

- (Exam Topic 2)

What is the command to check the status of the SmartEvent Correlation Unit?

- A. fw ctl get int cpsead_stat
- B. cpstat cpsead
- C. fw ctl stat cpsemd
- D. cp_conf get_stat cpsemd

Answer: B

NEW QUESTION 178

- (Exam Topic 2)

Which statement is true about ClusterXL?

- A. Supports Dynamic Routing (Unicast and Multicast)
- B. Supports Dynamic Routing (Unicast Only)
- C. Supports Dynamic Routing (Multicast Only)
- D. Does not support Dynamic Routing

Answer: A

NEW QUESTION 182

- (Exam Topic 2)

John detected high load on sync interface. Which is most recommended solution?

- A. For short connections like http service – delay sync for 2 seconds
- B. Add a second interface to handle sync traffic
- C. For short connections like http service – do not sync
- D. For short connections like icmp service – delay sync for 2 seconds

Answer: A

NEW QUESTION 186

- (Exam Topic 2)

In SmartEvent, what are the different types of automatic reactions that the administrator can configure?

- A. Mail, Block Source, Block Event Activity, External Script, SNMP Trap
- B. Mail, Block Source, Block Destination, Block Services, SNMP Trap
- C. Mail, Block Source, Block Destination, External Script, SNMP Trap
- D. Mail, Block Source, Block Event Activity, Packet Capture, SNMP Trap

Answer: A

NEW QUESTION 188

- (Exam Topic 2)

Which of the following links will take you to the SmartView web application?

- A. <https://<Security Management Server host name>/smartviewweb/>
- B. <https://<Security Management Server IP Address>/smartview/>
- C. <https://<Security Management Server host name>smartviewweb>
- D. <https://<Security Management Server IP Address>/smartview>

Answer: B

NEW QUESTION 191

- (Exam Topic 2)

SmartConsole R81 requires the following ports to be open for SmartEvent R81 management:

- A. 19090,22
- B. 19190,22
- C. 18190,80
- D. 19009,443

Answer: D

NEW QUESTION 196

- (Exam Topic 2)

You want to store the GAIA configuration in a file for later reference. What command should you use?

- A. `write mem <filename>`
- B. `show config -f <filename>`
- C. `save config -o <filename>`
- D. `save configuration <filename>`

Answer: D

NEW QUESTION 197

- (Exam Topic 2)

Using ClusterXL, what statement is true about the Sticky Decision Function?

- A. Can only be changed for Load Sharing implementations
- B. All connections are processed and synchronized by the pivot
- C. Is configured using `cpconfig`
- D. Is only relevant when using SecureXL

Answer: A

NEW QUESTION 201

- (Exam Topic 2)

Which one of the following is true about Threat Emulation?

- A. Takes less than a second to complete
- B. Works on MS Office and PDF files only
- C. Always delivers a file
- D. Takes minutes to complete (less than 3 minutes)

Answer: D

NEW QUESTION 206

- (Exam Topic 2)

What is the port used for SmartConsole to connect to the Security Management Server?

- A. CPMI port 18191/TCP
- B. CPM port/TCP port 19009
- C. SIC port 18191/TCP
- D. https port 4434/TCP

Answer: A

NEW QUESTION 207

- (Exam Topic 2)

The following command is used to verify the CPUSE version:

- A. `HostName:0>show installer status build`
- B. `[Expert@HostName:0]#show installer status`
- C. `[Expert@HostName:0]#show installer status build`
- D. `HostName:0>show installer build`

Answer:

A

NEW QUESTION 208

- (Exam Topic 3)

What cloud-based SandBlast Mobile application is used to register new devices and users?

- A. Check Point Protect Application
- B. Management Dashboard
- C. Behavior Risk Engine
- D. Check Point Gateway

Answer: D

NEW QUESTION 209

- (Exam Topic 3)

When SecureXL is enabled, all packets should be accelerated, except packets that match the following conditions:

- A. All UDP packets
- B. All IPv6 Traffic
- C. All packets that match a rule whose source or destination is the Outside Corporate Network
- D. CIFS packets

Answer: D

NEW QUESTION 211

- (Exam Topic 3)

On what port does the CPM process run?

- A. TCP 857
- B. TCP 18192
- C. TCP 900
- D. TCP 19009

Answer: D

NEW QUESTION 216

- (Exam Topic 3)

What statement best describes the Proxy ARP feature for Manual NAT in R81.10?

- A. Automatic proxy ARP configuration can be enabled
- B. Translate Destination on Client Side should be configured
- C. fw ctl proxy should be configured
- D. local.arp file must always be configured

Answer: D

NEW QUESTION 217

- (Exam Topic 3)

Which Check Point software blade provides Application Security and identity control?

- A. Identity Awareness
- B. Data Loss Prevention
- C. URL Filtering
- D. Application Control

Answer: D

NEW QUESTION 218

- (Exam Topic 3)

What will SmartEvent automatically define as events?

- A. Firewall
- B. VPN
- C. IPS
- D. HTTPS

Answer: C

NEW QUESTION 220

- (Exam Topic 3)

Which SmartConsole tab is used to monitor network and security performance?

- A. Manage Setting
- B. Security Policies
- C. Gateway and Servers
- D. Logs and Monitor

Answer: D

NEW QUESTION 222

- (Exam Topic 3)

What is true of the API server on R81.10?

- A. By default the API-server is activated and does not have hardware requirements.
- B. By default the API-server is not active and should be activated from the WebUI.
- C. By default the API server is active on management and stand-alone servers with 16GB of RAM (or more).
- D. By default, the API server is active on management servers with 4 GB of RAM (or more) and on stand-alone servers with 8GB of RAM (or more).

Answer: D

NEW QUESTION 224

- (Exam Topic 3)

You have a Gateway is running with 2 cores. You plan to add a second gateway to build a cluster and used a device with 4 cores. How many cores can be used in a Cluster for Firewall-kernel on the new device?

- A. 3
- B. 2
- C. 1
- D. 4

Answer: D

NEW QUESTION 225

- (Exam Topic 3)

Which statement is most correct regarding about “CoreXL Dynamic Dispatcher”?

- A. The CoreXL FW instances assignment mechanism is based on Source MAC addresses, Destination MAC addresses
- B. The CoreXL FW instances assignment mechanism is based on the utilization of CPU cores
- C. The CoreXL FW instances assignment mechanism is based on IP Protocol type
- D. The CoreXL FW instances assignment mechanism is based on Source IP addresses, Destination IP addresses, and the IP ‘Protocol’ type

Answer: B

NEW QUESTION 226

- (Exam Topic 3)

Which file contains the host address to be published, the MAC address that needs to be associated with the IP Address, and the unique IP of the interface that responds to ARP request?

- A. /opt/CPshrd-R81/conf/local.arp
- B. /var/opt/CPshrd-R81/conf/local.arp
- C. \$CPDIR/conf/local.arp
- D. \$FWDIR/conf/local.arp

Answer: D

NEW QUESTION 229

- (Exam Topic 3)

What command would show the API server status?

- A. cpm status
- B. api restart
- C. api status
- D. show api status

Answer: C

NEW QUESTION 233

- (Exam Topic 3)

Fill in the blank: The “fw monitor” tool can be best used to troubleshoot _____.

- A. AV issues
- B. VPN errors
- C. Network traffic issues
- D. Authentication issues

Answer: C

Explanation:

https://supportcenter.checkpoint.com/supportcenter/portal?eventSubmit_doGoviewsolutiondetails=&solutionid=sk30583

NEW QUESTION 238

- (Exam Topic 3)

Fill in the blanks. There are _____ types of software containers: _____.

- A. Three; security management, Security Gateway, and endpoint security
- B. Three; Security Gateway, endpoint security, and gateway management
- C. Two; security management and endpoint security
- D. Two; endpoint security and Security Gateway

Answer: A

NEW QUESTION 239

- (Exam Topic 3)

Vanessa is firewall administrator in her company. Her company is using Check Point firewall on a central and several remote locations which are managed centrally by R77.30 Security Management Server. On central location is installed R77.30 Gateway on Open server. Remote locations are using Check Point UTM-1570 series appliances with R75.30 and some of them are using a UTM-1-Edge-X or Edge-W with latest available firmware. She is in process of migrating to R81.

What can cause Vanessa unnecessary problems, if she didn't check all requirements for migration to R81?

- A. Missing an installed R77.20 Add-on on Security Management Server
- B. Unsupported firmware on UTM-1 Edge-W appliance
- C. Unsupported version on UTM-1 570 series appliance
- D. Unsupported appliances on remote locations

Answer: A

NEW QUESTION 241

- (Exam Topic 3)

Check Point APIs allow system engineers and developers to make changes to their organization's security policy with CLI tools and Web Services for all the following except:

- A. Create new dashboards to manage 3rd party task
- B. Create products that use and enhance 3rd party solutions
- C. Execute automated scripts to perform common tasks
- D. Create products that use and enhance the Check Point Solution

Answer: A

Explanation:

Check Point APIs let system administrators and developers make changes to the security policy with CLI tools and web-services. You can use an API to:

- Use an automated script to perform common tasks
- Integrate Check Point products with 3rd party solutions
- Create products that use and enhance the Check Point solution References:

NEW QUESTION 245

- (Exam Topic 3)

Pamela is Cyber Security Engineer working for Global Instance Firm with large scale deployment of Check Point Enterprise Appliances using GAiA/R81.10. Company's Developer Team is having random access issue to newly deployed Application Server in DMZ's Application Server Farm Tier and blames DMZ Security Gateway as root cause. The ticket has been created and issue is at Pamela's desk for an investigation. Pamela decides to use Check Point's Packet Analyzer Tool-fw monitor to iron out the issue during approved Maintenance window.

What do you recommend as the best suggestion for Pamela to make sure she successfully captures entire traffic in context of Firewall and problematic traffic?

- A. Pamela should check SecureXL status on DMZ Security gateway and if it's turned O
- B. She should turn OFF SecureXL before using fw monitor to avoid misleading traffic captures.
- C. Pamela should check SecureXL status on DMZ Security Gateway and if it's turned OF
- D. She should turn ON SecureXL before using fw monitor to avoid misleading traffic captures.
- E. Pamela should use tcpdump over fw monitor tool as tcpdump works at OS-level and captures entire traffic.
- F. Pamela should use snoop over fw monitor tool as snoop works at NIC driver level and captures entire traffic.

Answer: A

NEW QUESTION 250

- (Exam Topic 3)

Which of the following is NOT an option to calculate the traffic direction?

- A. Incoming
- B. Internal
- C. External
- D. Outgoing

Answer: D

NEW QUESTION 255

- (Exam Topic 3)

Capsule Connect and Capsule Workspace both offer secured connection for remote users who are using their mobile devices. However, there are differences between the two.

Which of the following statements correctly identify each product's capabilities?

- A. Workspace supports ios operating system, Android, and WP8, whereas Connect supports ios operating system and Android only
- B. For compliance/host checking, Workspace offers the MDM cooperative enforcement, whereas Connect offers both jailbreak/root detection and MDM

cooperative enforcement.

C. For credential protection, Connect uses One-time Password login support and has no SSO support, whereas Workspace offers both One-Time Password and certain SSO login support.

D. Workspace can support any application, whereas Connect has a limited number of application types which it will support.

Answer: C

NEW QUESTION 257

- (Exam Topic 3)

Check Point security components are divided into the following components:

A. GUI Client, Security Gateway, WebUI Interface

B. GUI Client, Security Management, Security Gateway

C. Security Gateway, WebUI Interface, Consolidated Security Logs

D. Security Management, Security Gateway, Consolidate Security Logs

Answer: B

NEW QUESTION 262

- (Exam Topic 3)

In which formats can Threat Emulation forensics reports be viewed in?

A. TXT, XML and CSV

B. PDF and TXT

C. PDF, HTML, and XML

D. PDF and HTML

Answer: C

NEW QUESTION 265

- (Exam Topic 3)

What command lists all interfaces using Multi-Queue?

A. cpmq get

B. show interface all

C. cpmq set

D. show multiqueue all

Answer: A

NEW QUESTION 268

- (Exam Topic 3)

What kind of information would you expect to see using the sim affinity command?

A. The VMACs used in a Security Gateway cluster

B. The involved firewall kernel modules in inbound and outbound packet chain

C. Overview over SecureXL templated connections

D. Network interfaces and core distribution used for CoreXL

Answer: D

NEW QUESTION 272

- (Exam Topic 3)

Which NAT rules are prioritized first?

A. Post-Automatic/Manual NAT rules

B. Manual/Pre-Automatic NAT

C. Automatic Hide NAT

D. Automatic Static NAT

Answer: B

NEW QUESTION 273

- (Exam Topic 3)

After trust has been established between the Check Point components, what is TRUE about name and IP-address changes?

A. Security Gateway IP-address cannot be changed without re-establishing the trust.

B. The Security Gateway name cannot be changed in command line without re-establishing trust.

C. The Security Management Server name cannot be changed in SmartConsole without re-establishing trust.

D. The Security Management Server IP-address cannot be changed without re-establishing the trust.

Answer: A

NEW QUESTION 278

- (Exam Topic 3)

Which of the following commands shows the status of processes?

- A. cpwd_admin -l
- B. cpwd -l
- C. cpwd admin_list
- D. cpwd_admin list

Answer: D

NEW QUESTION 280

- (Exam Topic 3)

After the initial installation on Check Point appliance, you notice that the Management-interface and default gateway are incorrect.

Which commands could you use to set the IP to 192.168.80.200/24 and default gateway to 192.168.80.1.

- A. set interface Mgmt ipv4-address 192.168.80.200 mask-length 24set static-route default nexthop gateway address 192.168.80.1 onsave config
- B. set interface Mgmt ipv4-address 192.168.80.200 255.255.255.0add static-route 0.0.0.0. 0.0.0.0 gw 192.168.80.1 onsave config
- C. set interface Mgmt ipv4-address 192.168.80.200 255.255.255.0set static-route 0.0.0.0. 0.0.0.0 gw 192.168.80.1 onsave config
- D. set interface Mgmt ipv4-address 192.168.80.200 mask-length 24add static-route default nexthop gateway address 192.168.80.1 onsave config

Answer: A

NEW QUESTION 284

- (Exam Topic 3)

In the Firewall chain mode FFF refers to:

- A. Stateful Packets
- B. No Match
- C. All Packets
- D. Stateless Packets

Answer: C

NEW QUESTION 285

- (Exam Topic 3)

What is the order of NAT priorities?

- A. Static NAT, IP pool NAT, hide NAT
- B. IP pool NAT, static NAT, hide NAT
- C. Static NAT, automatic NAT, hide NAT
- D. Static NAT, hide NAT, IP pool NAT

Answer: A

NEW QUESTION 289

- (Exam Topic 3)

Which Check Point feature enables application scanning and the detection?

- A. Application Dictionary
- B. AppWiki
- C. Application Library
- D. CApp

Answer: B

NEW QUESTION 291

- (Exam Topic 3)

In what way are SSL VPN and IPSec VPN different?

- A. SSL VPN is using HTTPS in addition to IKE, whereas IPSec VPN is clientless
- B. SSL VPN adds an extra VPN header to the packet, IPSec VPN does not
- C. IPSec VPN does not support two factor authentication, SSL VPN does support this
- D. IPSec VPN uses an additional virtual adapter; SSL VPN uses the client network adapter only.

Answer: D

NEW QUESTION 295

- (Exam Topic 3)

What is the command to show SecureXL status?

- A. fwaccel status
- B. fwaccel stats -m
- C. fwaccel -s
- D. fwaccel stat

Answer: D

Explanation:

To check overall SecureXL status: [Expert@HostName]# fwaccel stat References:

NEW QUESTION 297

- (Exam Topic 3)

You want to verify if your management server is ready to upgrade to R81.10. What tool could you use in this process?

- A. migrate export
- B. upgrade_tools verify
- C. pre_upgrade_verifier
- D. migrate import

Answer: C

NEW QUESTION 301

- (Exam Topic 3)

When using CPSTAT, what is the default port used by the AMON server?

- A. 18191
- B. 18192
- C. 18194
- D. 18190

Answer: B

NEW QUESTION 305

- (Exam Topic 3)

With MTA (Mail Transfer Agent) enabled the gateways manages SMTP traffic and holds external email with potentially malicious attachments. What is required in order to enable MTA (Mail Transfer Agent) functionality in the Security Gateway?

- A. Threat Cloud Intelligence
- B. Threat Prevention Software Blade Package
- C. Endpoint Total Protection
- D. Traffic on port 25

Answer: B

NEW QUESTION 309

- (Exam Topic 3)

SmartEvent provides a convenient way to run common command line executables that can assist in investigating events. Right-clicking the IP address, source or destination, in an event provides a list of default and customized commands. They appear only on cells that refer to IP addresses because the IP address of the active cell is used as the destination of the command when run. The default commands are:

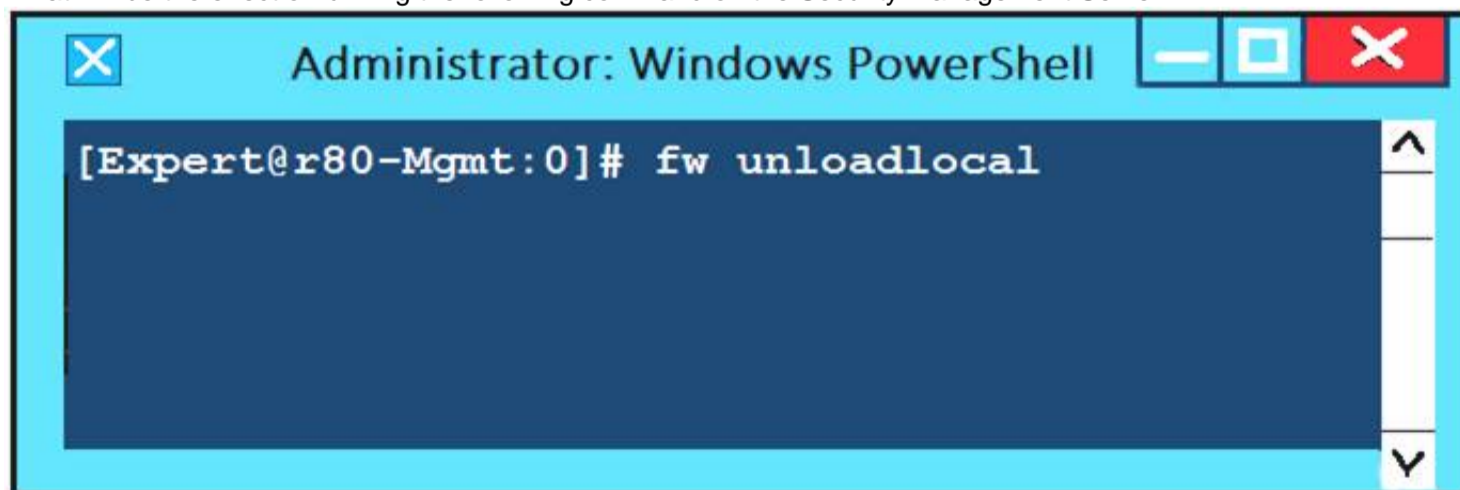
- A. ping, traceroute, netstat, and route
- B. ping, nslookup, Telnet, and route
- C. ping, whois, nslookup, and Telnet
- D. ping, traceroute, netstat, and nslookup

Answer: C

NEW QUESTION 313

- (Exam Topic 3)

What will be the effect of running the following command on the Security Management Server?



- A. Remove the installed Security Policy.
- B. Remove the local ACL lists.
- C. No effect.
- D. Reset SIC on all gateways.

Answer: A

NEW QUESTION 317

- (Exam Topic 3)

What is the responsibility of SOLR process on R81.10 management server?

- A. Validating all data before it's written into the database
- B. It generates indexes of data written to the database
- C. Communication between SmartConsole applications and the Security Management Server
- D. Writing all information into the database

Answer: B

NEW QUESTION 321

- (Exam Topic 3)

Which path below is available only when CoreXL is enabled?

- A. Slow path
- B. Firewall path
- C. Medium path
- D. Accelerated path

Answer: C

NEW QUESTION 323

- (Exam Topic 3)

Which command would you use to set the network interfaces' affinity in Manual mode?

- A. sim affinity -m
- B. sim affinity -l
- C. sim affinity -a
- D. sim affinity -s

Answer: D

NEW QUESTION 328

- (Exam Topic 3)

What is the most ideal Synchronization Status for Security Management Server High Availability deployment?

- A. Lagging
- B. Synchronized
- C. Never been synchronized
- D. Collision

Answer: B

NEW QUESTION 331

- (Exam Topic 3)

Which of the following is NOT an alert option?

- A. SNMP
- B. High alert
- C. Mail
- D. User defined alert

Answer: B

NEW QUESTION 332

- (Exam Topic 3)

With SecureXL enabled, accelerated packets will pass through the following:

- A. Network Interface Card, OSI Network Layer, OS IP Stack, and the Acceleration Device
- B. Network Interface Card, Check Point Firewall Kernel, and the Acceleration Device
- C. Network Interface Card and the Acceleration Device
- D. Network Interface Card, OSI Network Layer, and the Acceleration Device

Answer: C

NEW QUESTION 335

- (Exam Topic 3)

You notice that your firewall is under a DDoS attack and would like to enable the Penalty Box feature, which command you use?

- A. sim erdos -e 1
- B. sim erdos -m 1
- C. sim erdos -v 1
- D. sim erdos -x 1

Answer: A

NEW QUESTION 337

- (Exam Topic 4)

Firewall polices must be configured to accept VRRP packets on the GAiA platform if it Firewall software. The Multicast destination assigned by the internet Assigned Number Authority (IANA) for VRRP is:

- A. 224.0.0.18
- B. 224 00 5
- C. 224.0.0.102
- D. 224.0.0.22

Answer: A

NEW QUESTION 342

- (Exam Topic 4)

If the Active Security Management Server fails or if it becomes necessary to change the Active to Standby, the following steps must be taken to prevent data loss. Providing the Active Security Management Server is responsive, which if these steps should NOT be performed:

- A. Rename the hostname of the Standby member to match exactly the hostname of the Active member.
- B. Change the Standby Security Management Server to Active.
- C. Change the Active Security Management Server to Standby.
- D. Manually synchronize the Active and Standby Security Management Servers.

Answer: A

NEW QUESTION 347

- (Exam Topic 4)

What is the default size of NAT table fw_x_alloc?

- A. 20000
- B. 35000
- C. 25000
- D. 10000

Answer: C

NEW QUESTION 348

- (Exam Topic 4)

If SecureXL is disabled which path is used to process traffic?

- A. Passive path
- B. Medium path
- C. Firewall path
- D. Accelerated path

Answer: C

NEW QUESTION 350

- (Exam Topic 4)

Which command lists firewall chain?

- A. fwctl chain
- B. fw list chain
- C. fw chain module
- D. fw tab -t chainmod

Answer: A

Explanation:

https://sc1.checkpoint.com/documents/R81/WebAdminGuides/EN/CP_R81_NextGenSecurityGateway_Guide/T

NEW QUESTION 354

- (Exam Topic 4)

A user complains that some Internet resources are not available. The Administrator is having issues seeing it packets are being dropped at the firewall (not seeing drops in logs). What is the solution to troubleshoot the issue?

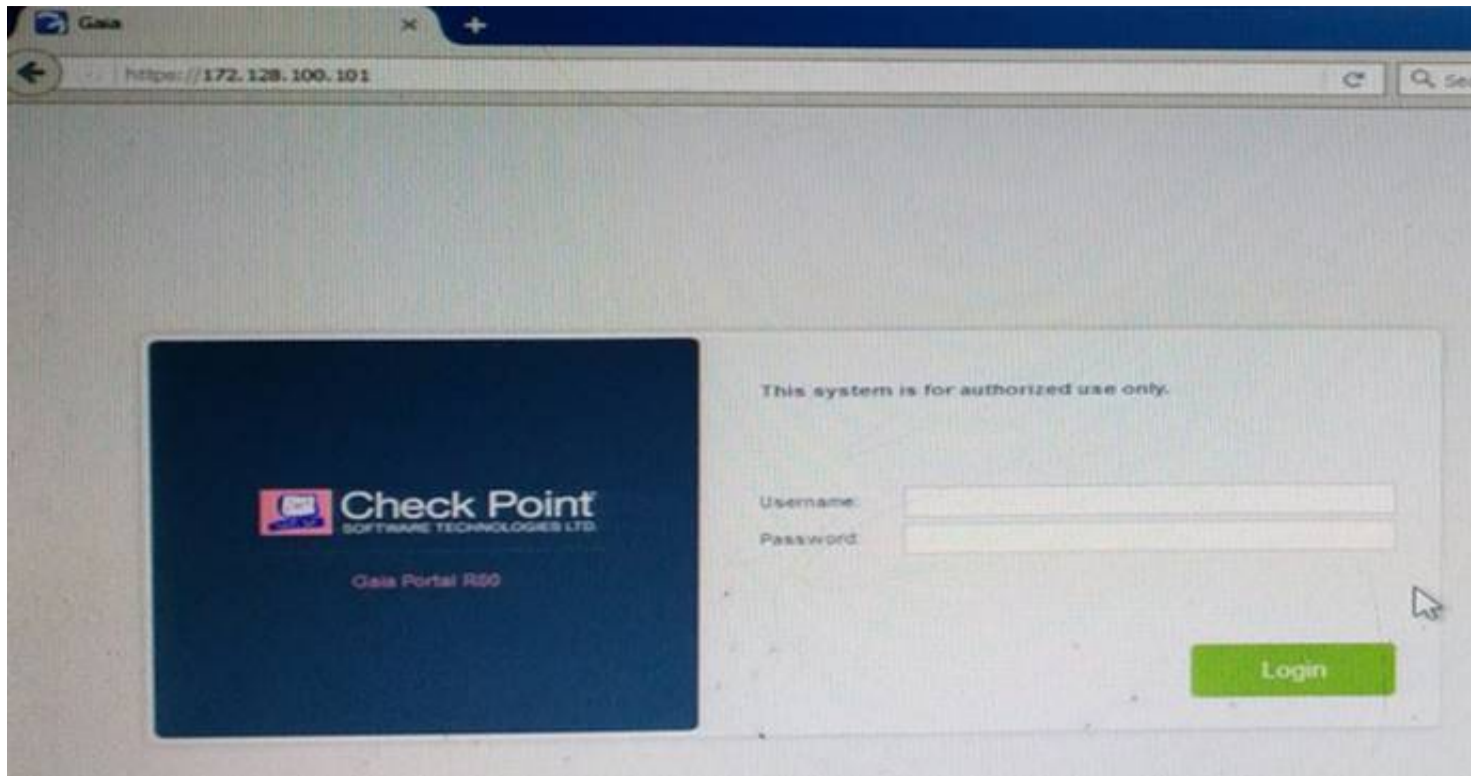
- A. run fw unloadlocal" on the relevant gateway and check the ping again
- B. run "cpstop" on the relevant gateway and check the ping again
- C. run "fw log" on the relevant gateway
- D. run "fw ctl zdebug drop" on the relevant gateway

Answer: D

NEW QUESTION 359

- (Exam Topic 4)

Kofi, the administrator of the ALPHA Corp network wishes to change the default Gaia WebUI Portal port number currently set on the default HTTPS port. Which CLISH commands are required to be able to change this TCP port?



- A. set web ssl-port <new port number>
- B. set Gaia-portal port <new port number>
- C. set Gaia-portal https-port <new port number>
- D. set web https-port <new port number>

Answer: A

NEW QUESTION 361

- (Exam Topic 4)

There are multiple types of licenses for the various VPN components and types. License type related to management and functioning of Remote Access VPNs are - which of the following license requirement statement is NOT true:

- A. MobileAccessLicense ° This license is required on the Security Gateway for the following Remote Access solutions
- B. EndpointPolicyManagementLicense ° The Endpoint Security Suite includes blades other than the Remote Access VPN, hence this license is required to manage the suite
- C. EndpointContainerLicense ° The Endpoint Software Blade Licenses does not require an Endpoint Container License as the base
- D. IPSecVPNLicense • This license is installed on the VPN Gateway and is a basic requirement for a Remote Access VPN solution

Answer: C

NEW QUESTION 364

- (Exam Topic 4)

The back end database for Check Point R81 Management uses:

- A. DBMS
- B. MongoDB
- C. PostgreSQL
- D. MySQL

Answer: C

NEW QUESTION 368

- (Exam Topic 4)

The customer has about 150 remote access user with a Windows laptops. Not more than 50 Clients will be connected at the same time. The customer want to use multiple VPN Gateways as entry point and a personal firewall. What will be the best license for him?

- A. He will need Capsule Connect using MEP (multiple entry points).
- B. Because the customer uses only Windows clients SecuRemote will be sufficient and no additional license is needed
- C. He will need Harmony Endpoint because of the personal firewall.
- D. Mobile Access license because he needs only a 50 user license, license count is per concurrent use

Answer: D

NEW QUESTION 370

- (Exam Topic 4)

What are the modes of SandBlast Threat Emulation deployment?

- A. Cloud, Smart-1 and Hybrid
- B. Clou
- C. OpenServer and Vmware
- D. Cloud, Appliance and Private
- E. Cloud, Appliance and Hybrid

Answer: D

NEW QUESTION 372

- (Exam Topic 4)

Sieve is a Cyber Security Engineer working for Global Bank with a large scale deployment of Check Point Enterprise Appliances Steve's manager. Diana asks him to provide firewall connection table details from one of the firewalls for which he is responsible. Which of these commands may impact performance briefly and should not be used during heavy traffic times of day?

- A. fw tab -t connections -s
- B. fw tab -t connections
- C. fw tab -t connections -c
- D. fw tab -t connections -f

Answer: B

NEW QUESTION 374

- (Exam Topic 4)

What are types of Check Point APIs available currently as part of R81.10 code?

- A. Security Gateway API Management API, Threat Prevention API and Identity Awareness Web Services API
- B. Management API, Threat Prevention API, Identity Awareness Web Services API and OPSEC SDK API
- C. OSE API, OPSEC SDK API, Threat Extraction API and Policy Editor API
- D. CPMI API, Management API, Threat Prevention API and Identity Awareness Web Services API

Answer: B

NEW QUESTION 375

- (Exam Topic 4)

Which option, when applied to a rule, allows traffic to VPN gateways in specific VPN communities?

- A. All Connections (Clear or Encrypted)
- B. Accept all encrypted traffic
- C. Specific VPN Communities
- D. All Site-to-Site VPN Communities

Answer: B

NEW QUESTION 377

- (Exam Topic 4)

Fill in the blank: A _____ VPN deployment is used to provide remote users with secure access to internal corporate resources by authenticating the user through an internet browser.

- A. Clientless remote access
- B. Clientless direct access
- C. Client-based remote access
- D. Direct access

Answer: A

NEW QUESTION 379

- (Exam Topic 4)

After having saved the Clish Configuration with the "save configuration config.txt*" command, where can you find the config.txt file?

- A. You will find it in the home directory of your user account (e.
- B. /home/admirV)
- C. You can locate the file via SmartConsole > Command Line.
- D. You have to launch the WebUI and go to "Config" -> "Export Config File" and specify the destination directory of your local file system
- E. You cannot locate the file in the file system since Clish does not have any access to the bash file system

Answer: B

NEW QUESTION 384

- (Exam Topic 4)

How long may verification of one file take for Sandblast Threat Emulation?

- A. up to 1 minutes
- B. within seconds cleaned file will be provided
- C. up to 5 minutes
- D. up to 3 minutes

Answer: B

NEW QUESTION 385

- (Exam Topic 4)

Which of the following is NOT a valid type of SecureXL template?

- A. Accept Template
- B. Deny template

- C. Drop Template
- D. NAT Template

Answer: B

NEW QUESTION 388

- (Exam Topic 4)

Matt wants to upgrade his old Security Management server to R81.x using the Advanced Upgrade with Database Migration. What is one of the requirements for a successful upgrade?

- A. Size of the /var/log folder of the source machine must be at least 25% of the size of the /var/log directory on the target machine
- B. Size of the /var/log folder of the target machine must be at least 25% of the size of the /var/log directory on the source machine
- C. Size of the \$FWDIR/log folder of the target machine must be at least 30% of the size of the \$FWDIR/log directory on the source machine
- D. Size of the /var/log folder of the target machine must be at least 25GB or more

Answer: B

Explanation:

https://sc1.checkpoint.com/documents/R77/CP_R77_Gaia_Installation_and_Upgrade_Guide/html_frameset.htm?topic=documents/R77/CP_R77_Gaia_Installation_and_Upgrade_Guide/90083

NEW QUESTION 391

- (Exam Topic 4)

What command is used to manually failover a Multi-Version Cluster during the upgrade?

- A. clusterXL_admin down in Expert Mode
- B. clusterXL_admin down in Clish
- C. set cluster member state down in Clish
- D. set cluster down in Expert Mode

Answer: B

NEW QUESTION 393

- (Exam Topic 4)

Bob needs to know if Alice was configuring the new virtual cluster interface correctly. Which of the following Check Point commands is true?

- A. cphaprob-aif
- B. cp hap rob state
- C. cphaprob list
- D. probcpha -a if

Answer: A

NEW QUESTION 397

- (Exam Topic 4)

In Threat Prevention, you can create new or clone profiles but you CANNOT change the out-of-the-box profiles of:

- A. Basic, Optimized, Strict
- B. Basic, Optimized, Severe
- C. General, Escalation, Severe
- D. General, purposed, Strict

Answer: A

NEW QUESTION 399

- (Exam Topic 4)

Check Point Support in many cases asks you for a configuration summary of your Check Point system. This is also called:

- A. cpexport
- B. sysinfo
- C. cpsizeme
- D. cpinfo

Answer: D

NEW QUESTION 404

- (Exam Topic 4)

The "Hit count" feature allows tracking the number of connections that each rule matches. Will the Hit count feature work independently from logging and Track the hits if the Track option is set to "None"?

- A. No, it will work independentl
- B. Hit Count will be shown only for rules Track option set as Log or alert.
- C. Yes it will work independently as long as "analyze all rules" tick box is enabled on the Security Gateway.
- D. No, it will not work independently because hit count requires all rules to be logged.
- E. Yes it will work independently because when you enable Hit Count, the SMS collects the data from supported Security Gateways.

Answer:

D

NEW QUESTION 405

- (Exam Topic 4)

What traffic does the Anti-bot feature block?

- A. Command and Control traffic from hosts that have been identified as infected
- B. Command and Control traffic to servers with reputation for hosting malware
- C. Network traffic that is directed to unknown or malicious servers
- D. Network traffic to hosts that have been identified as infected

Answer: A

NEW QUESTION 406

- (Exam Topic 4)

You had setup the VPN Community VPN-Stores'with 3 gateways. There are some issues with one remote gateway(1.1.1.1) and an your local gateway. What will be the best log filter to see only the IKE Phase 2 agreed networks for both gateways

- A. action:"Key Install" AND 1.1.1.1 AND Main Mode
- B. action:"Key Install- AND 1.1.1.1 ANDQuick Mode
- C. Blade:"VPN" AND VPN-Stores AND Main Mode
- D. Blade:"VPN" AND VPN-Stores AND Quick Mode

Answer: C

NEW QUESTION 410

- (Exam Topic 4)

Due to high CPU workload on the Security Gateway, the security administrator decided to purchase a new CPU to replace the existing single core CPU. After installation, is the administrator required to perform any additional tasks?

- A. Go to clash-Run cpstop | Run cpstart
- B. Go to clash-Run cpconfig | Configure CoreXL to make use of the additional Cores | Exit cpconfig | Reboot Security Gateway
- C. Administrator does not need to perform any tas
- D. Check Point will make use of the newly installed CPU and Cores
- E. Go to clash-Run cpconfig | Configure CoreXL to make use of the additional Cores | Exit cpconfig | Reboot Security Gateway | Install Security Policy

Answer: B

NEW QUESTION 411

- (Exam Topic 4)

In which VPN community is a satellite VPN gateway not allowed to create a VPN tunnel with another satellite VPN gateway?

- A. Pentagon
- B. Combined
- C. Meshed
- D. Star

Answer: D

NEW QUESTION 412

- (Exam Topic 4)

Fill in the blank: An identity server uses a _____ for user authentication.

- A. Shared secret
- B. Certificate
- C. One-time password
- D. Token

Answer: A

NEW QUESTION 416

- (Exam Topic 4)

Fill in the blank: Permanent VPN tunnels can be set on all tunnels in the community, on all tunnels for specific gateways, or _____.

- A. On all satellite gateway to satellite gateway tunnels
- B. On specific tunnels for specific gateways
- C. On specific tunnels in the community
- D. On specific satellite gateway to central gateway tunnels

Answer: C

NEW QUESTION 420

- (Exam Topic 4)

Which of the following blades is NOT subscription-based and therefore does not have to be renewed on a regular basis?

- A. Application Control

- B. Threat Emulation
- C. Anti-Virus
- D. Advanced Networking Blade

Answer: B

NEW QUESTION 421

- (Exam Topic 4)

An administrator is creating an IPsec site-to-site VPN between his corporate office and branch office. Both offices are protected by Check Point Security Gateway managed by the same Security Management Server. While configuring the VPN community to specify the pre-shared secret the administrator found that the check box to enable pre-shared secret and cannot be enabled. Why does it not allow him to specify the pre-shared secret?

- A. IPsec VPN blade should be enabled on both Security Gateway.
- B. Pre-shared can only be used while creating a VPN between a third party vendor and Check Point Security Gateway.
- C. Certificate based Authentication is the only authentication method available between two Security Gateway managed by the same SMS.
- D. The Security Gateways are pre-R75.40.

Answer: C

NEW QUESTION 423

- (Exam Topic 4)

Alice works for a big security outsourcing provider company and as she receives a lot of change requests per day she wants to use for scripting daily (asks the API services from Check Point for the Management API. Firstly she needs to be aware if the API services are running for the management. Which of the following Check Point Command is true:

- A. api mgmt status
- B. api status
- C. status api
- D. status mgmt apt

Answer: B

NEW QUESTION 427

- (Exam Topic 4)

How many versions, besides the destination version, are supported in a Multi-Version Cluster Upgrade?

- A. 1
- B. 3
- C. 2
- D. 4

Answer: B

NEW QUESTION 431

- (Exam Topic 4)

By default how often updates are checked when the CPUSE Software Updates Policy is set to Automatic?

- A. Six times per day
- B. Seven times per day
- C. Every two hours
- D. Every three hours

Answer: D

Explanation:

Reference: https://sc1.checkpoint.com/documents/R77/CP_R77_Gaia_AdminWebAdminGuide/html_frameset.htm?topic=documents/R77/CP_R77_Gaia_AdminWebAdminGuide/112109

NEW QUESTION 436

- (Exam Topic 4)

What does the Log "Views" tab show when SmartEvent is Correlating events?

- A. A list of common reports
- B. Reports for customization
- C. Top events with charts and graphs
- D. Details of a selected logs

Answer: D

NEW QUESTION 437

- (Exam Topic 4)

Which Correction mechanisms are available with ClusterXL under R81.10?

- A. Correction Mechanisms are only available of Maestro Hyperscale Orchestrators
- B. Pre-Correction and SDF (Sticky Decision Function)
- C. SDF (Sticky Decision Function) and Flush and ACK

D. Dispatcher (Early Correction) and Firewall (Late Correction)

Answer: C

NEW QUESTION 439

- (Exam Topic 4)

Which of the following statements about SecureXL NAT Templates is true?

- A. NAT Templates are generated to achieve high session rate for NA
- B. These templates store the NAT attributes of connections matched by rulebase so that similar newconnections can take advantage of this information and do NAT without the expensive rulebase looku
- C. These are enabled by default and work only if Accept Templates are enabled.
- D. DROP Templates are generated to achieve high session rate for NA
- E. These templates store the NAT attributes of connections matched by rulebase so that similar newconnections can take advantage of this information and do NAT without the expensive rulebase looku
- F. These are disabled by default and work only if NAT Templates are disabled.
- G. NAT Templates are generated to achieve high session rate for NA
- H. These templates store the NAT attributes of connections matched by rulebase so that similar newconnections can take advantage of this information and do NAT without the expensive rulebase looku
- I. These are disabled by default and work only if Accept Templates are disabled.
- J. ACCEPT Templates are generated to achieve high session rate for NA
- K. These templates store the NAT attributes of connections matched by rulebase so that similar new connections can take advantage of this information and do NAT without the expensive rulebase looku
- L. These are disabled by default and work only if NAT Templates are disabled.

Answer: A

NEW QUESTION 442

- (Exam Topic 4)

In the R81 SmartConsole, on which tab are Permissions and Administrators defined?

- A. Security Policies
- B. Logs and Monitor
- C. Manage and Settings
- D. Gateways and Servers

Answer: C

NEW QUESTION 445

- (Exam Topic 4)

Due to high CPU workload on the Security Gateway, the security administrator decided to purchase a new multicore CPU to replace the existing single core CPU. After installation, is the administrator required to perform any additional tasks?

- A. After upgrading the hardware, increase the number of kernel instances using cpconfig
- B. Hyperthreading must be enabled in the bios to use CoreXL
- C. Run cprestart from dish
- D. Administrator does not need to perform any tas
- E. Check Point will make use of the newly installed CPU and Cores.

Answer: A

Explanation:

https://sc1.checkpoint.com/documents/R80.40/WebAdminGuides/EN/CP_R80.40_PerformanceTuning_AdminG R81

https://sc1.checkpoint.com/documents/R81/WebAdminGuides/EN/CP_R81_PerformanceTuning_AdminGuide/ cpconfig -> Enter the number of the Check Point CoreXL option. (Enter 1 to select Change the number of firewall instances. OR Enter 2 for the option Change the number of IPv6 firewall instances.) -> Enter the total number of IPv4 (IPv6) CoreXL Firewall instances you wish the Security Gateway to run. Follow the instructions on the screen. -> Exit from the cpconfig menu.
- Reboot the Security Gateway.

NEW QUESTION 450

- (Exam Topic 4)

Which process is used mainly for backward compatibility of gateways in R81.X? It provides communication with GUI-client, database manipulation, policy compilation and Management HA synchronization.

- A. cpm
- B. fwd
- C. cpd
- D. fwmD18912E1457D5D1DDCBD40AB3BF70D5D

Answer: D

NEW QUESTION 454

- (Exam Topic 4)

When users connect to the Mobile Access portal they are unable to open File Shares. Which log file would you want to examine?

- A. cvpnd.elg
- B. httpd.elg
- C. vpnd.elg
- D. fw.elg

Answer: A

NEW QUESTION 456

- (Exam Topic 4)

Bob is asked by Alice to disable the SecureXL mechanism temporary for further diagnostic by their Check Point partner. Which of the following Check Point Command is true:

- A. fwaccel suspend
- B. fwaccel standby
- C. fwaccel off
- D. fwaccel templates

Answer: C

NEW QUESTION 459

- (Exam Topic 4)

What is the default shell for the command line interface?

- A. Expert
- B. Clish
- C. Admin
- D. Normal

Answer: B

Explanation:

The default shell of the CLI is called clish References:

NEW QUESTION 460

- (Exam Topic 4)

John is using Management HA. Which Security Management Server should he use for making changes?

- A. secondary Smartcenter
- B. active SmartConsole
- C. connect virtual IP of Smartcenter HA
- D. primary Log Server

Answer: B

NEW QUESTION 464

- (Exam Topic 4)

What is the recommended configuration when the customer requires SmartLog indexing for 14 days and SmartEvent to keep events for 180 days?

- A. Use Multi-Domain Management Server.
- B. Choose different setting for log storage and SmartEvent db
- C. Install Management and SmartEvent on different machines.
- D. it is not possible.

Answer: C

NEW QUESTION 469

- (Exam Topic 4)

What is the purpose of the CPCA process?

- A. Monitoring the status of processes.
- B. Sending and receiving logs.
- C. Communication between GUI clients and the SmartCenter server.
- D. Generating and modifying certificates.

Answer: D

NEW QUESTION 474

- (Exam Topic 4)

Packet acceleration (SecureXL) identifies connections by several attributes- Which of the attributes is NOT used for identifying connection?

- A. Source Address
- B. Destination Address
- C. TCP Acknowledgment Number
- D. Source Port

Answer: C

Explanation:

https://sc1.checkpoint.com/documents/R77/CP_R77_Firewall_WebAdmm/92711.htm

NEW QUESTION 475

- (Exam Topic 4)

What is the minimum number of CPU cores required to enable CoreXL?

- A. 1
- B. 6
- C. 2
- D. 4

Answer: C

Explanation:

Default number of CoreXL IPv4 FW instances:

Note: The real number of CoreXL FW instances depends on the current CoreXL license. Number of

CPU cores Default number of CoreXL IPv4

FW instances Default number of Secure Network Distributors (SNDs)

1 1

Note: CoreXL is disabled 0 Note: CoreXL is disabled

2 2 2

4 3 1

6 - 20 [Number of CPU cores] - 2 2

More than 20 (1) [Number of CPU cores] - 4 4

NEW QUESTION 478

- (Exam Topic 4)

Bob has finished io setup provisioning a secondary security management server. Now he wants to check if the provisioning has been correct. Which of the following Check Point command can be used to check if the security management server has been installed as a primary or a secondary security management server?

- A. cpprod_util MgmtIsPrimary
- B. cpprod_util FwIsSecondary
- C. cpprod_util MgmtIsSecondary
- D. cpprod_util FwIsPrimary

Answer: A

NEW QUESTION 481

- (Exam Topic 4)

What needs to be configured if the NAT property 'Translate destination or client side' is not enabled in Global Properties?

- A. A host route to route to the destination IP.
- B. Use the file local.arp to add the ARP entries for NAT to work.
- C. Nothing, the Gateway takes care of all details necessary.
- D. Enabling 'Allow bi-directional NAT' for NAT to work correctly.

Answer: C

NEW QUESTION 483

- (Exam Topic 4)

What level of CPU load on a Secure Network Distributor would indicate that another may be necessary?

- A. Idle <20%
- B. USR <20%
- C. SYS <20%
- D. Wait <20%

Answer: A

NEW QUESTION 484

- (Exam Topic 4)

When configuring SmartEvent Initial settings, you must specify a basic topology for SmartEvent to help it calculate traffic direction for events. What is this setting called and what are you defining?

- A. Network, and defining your Class A space
- B. Topology, and you are defining the Internal network
- C. Internal addresses you are defining the gateways
- D. Internal network(s) you are defining your networks

Answer: D

NEW QUESTION 487

- (Exam Topic 4)

Joey want to configure NTP on R81 Security Management Server. He decided to do this via WebUI. What is the correct address to access the Web UI for Gaia platform via browser?

- A. https://<Device_IP_Address>
- B. http://<Device_IP_Address>:443
- C. https://<Device_IP_Address>:10000

D. https://<Device_IP_Address>:4434

Answer: A

NEW QUESTION 488

- (Exam Topic 4)

Which options are given on features, when editing a Role on Gaia Platform?

- A. Read/Write, Read Only
- B. Read/Write, Read Only, None
- C. Read/Write, None
- D. Read Only, None

Answer: B

NEW QUESTION 493

- (Exam Topic 4)

True or False: In R81, more than one administrator can login to the Security Management Server with write permission at the same time.

- A. False, this feature has to be enabled in the Global Properties.
- B. True, every administrator works in a session that is independent of the other administrators.
- C. True, every administrator works on a different database that is independent of the other administrators.
- D. False, only one administrator can login with write permission.

Answer: B

NEW QUESTION 494

- (Exam Topic 4)

The admin lost access to the Gaia Web Management Interface but he was able to connect via ssh. How can you check if the web service is enabled, running and which port is used?

- A. In expert mode run `#netstat -tulnp | grep httpd` to see if httpd is up and to get the port number
- B. In dish run `>show web daemon-enable` to see if the web daemon is enabled.
- C. In dish run `>show web ssl-port` to see if the web daemon is enabled and which port is in use
- D. In expert mode run `#netstat -anp | grep httpd` to see if the httpd is up
- E. In dish run `>show web ssl-port` to see if the web daemon is enabled and which port is in use
- F. In expert mode run `#netstat -anp | grep httpd2` to see if the httpd2 is up
- G. In expert mode run `#netstat -tulnp | grep httpd2` to see if httpd2 is up and to get the port number
- H. In dish run `>show web daemon-enable` to see if the web daemon is enabled.

Answer: C

NEW QUESTION 497

- (Exam Topic 4)

In Advanced Permanent Tunnel Configuration, to set the amount of time the tunnel test runs without a response before the peer host is declared 'down', you would set the ?

- A. life sign polling interval
- B. life sign timeout
- C. life_sign_polling_interval
- D. life_sign_timeout

Answer: D

Explanation:

Reference: https://sc1.checkpoint.com/documents/R77/CP_R77_VPN_AdminGuide/html_frameset.htm?topic=documents/R77/CP_R77_VPN_AdminGuide/14018

NEW QUESTION 499

- (Exam Topic 4)

You want to gather data and analyze threats to your mobile device. It has to be a lightweight app. Which application would you use?

- A. Check Point Capsule Cloud
- B. Sandblast Mobile Protect
- C. SecuRemote
- D. SmartEvent Client Info

Answer: B

Explanation:

SandBlast Mobile Protect is a lightweight app for iOS and Android™ that gathers data and helps analyze threats to devices in your environment.
<https://www.checkpoint.com/downloads/products/how-sandblast-mobile-works-solution-brief.pdf>

NEW QUESTION 503

- (Exam Topic 4)

Which is the correct order of a log flow processed by SmartEvent components?

- A. Firewall > Correlation Unit > Log Server > SmartEvent Server Database > SmartEvent Client
- B. Firewall > SmartEvent Server Database > Correlation Unit > Log Server > SmartEvent Client
- C. Firewall > Log Server > SmartEvent Server Database > Correlation Unit > SmartEvent Client
- D. Firewall > Log Server > Correlation Unit > SmartEvent Server Database > SmartEvent Client

Answer: D

NEW QUESTION 504

- (Exam Topic 4)

SmartEvent Security Checkups can be run from the following Logs and Monitor activity:

- A. Reports
- B. Advanced
- C. Checkups
- D. Views

Answer: A

NEW QUESTION 506

- (Exam Topic 4)

Main Mode in IKEv1 uses how many packages for negotiation?

- A. 4
- B. depends on the make of the peer gateway
- C. 3
- D. 6

Answer: C

NEW QUESTION 507

- (Exam Topic 4)

What two ordered layers make up the Access Control Policy Layer?

- A. URL Filtering and Network
- B. Network and Threat Prevention
- C. Application Control and URL Filtering
- D. Network and Application Control

Answer: D

NEW QUESTION 511

- (Exam Topic 4)

You want to allow your Mobile Access Users to connect to an internal file share. Adding the Mobile Application 'File Share' to your Access Control Policy in the SmartConsole didn't work. You will be only allowed to select Services for the 'Service & Application' column How to fix it?

- A. A Quantum Spark Appliance is selected as Installation Target for the policy packet.
- B. The Mobile Access Blade is not enabled for the Access Control Layer of the policy.
- C. The Mobile Access Policy Source under Gateway properties Is set to Legacy Policy and not to Unified Access Policy.
- D. The Mobile Access Blade is not enabled under Gateway properties.

Answer: C

NEW QUESTION 512

- (Exam Topic 4)

Which of the following processes pulls the application monitoring status from gateways?

- A. cpd
- B. cpwd
- C. cpm
- D. fwm

Answer: A

NEW QUESTION 515

- (Exam Topic 4)

What is false regarding prerequisites for the Central Deployment usage?

- A. The administrator must have write permission on SmartUpdate
- B. Security Gateway must have the latest CPUSE Deployment Agent
- C. No need to establish SIC between gateways and the management server, since the CDT tool will take care about SIC automatically.
- D. The Security Gateway must have a policy installed

Answer: D

NEW QUESTION 518

- (Exam Topic 4)

How can you switch the active log file?

- A. Run fw logswitch on the gateway
- B. Run fwm logswitch on the Management Server
- C. Run fwm logswitch on the gateway
- D. Run fw logswitch on the Management Server

Answer: D

NEW QUESTION 521

- (Exam Topic 4)

Mobile Access Gateway can be configured as a reverse proxy for Internal Web Applications Reverse proxy users browse to a URL that is resolved to the Security Gateway IP address. Which of the following Check Point command is true for enabling the Reverse Proxy:

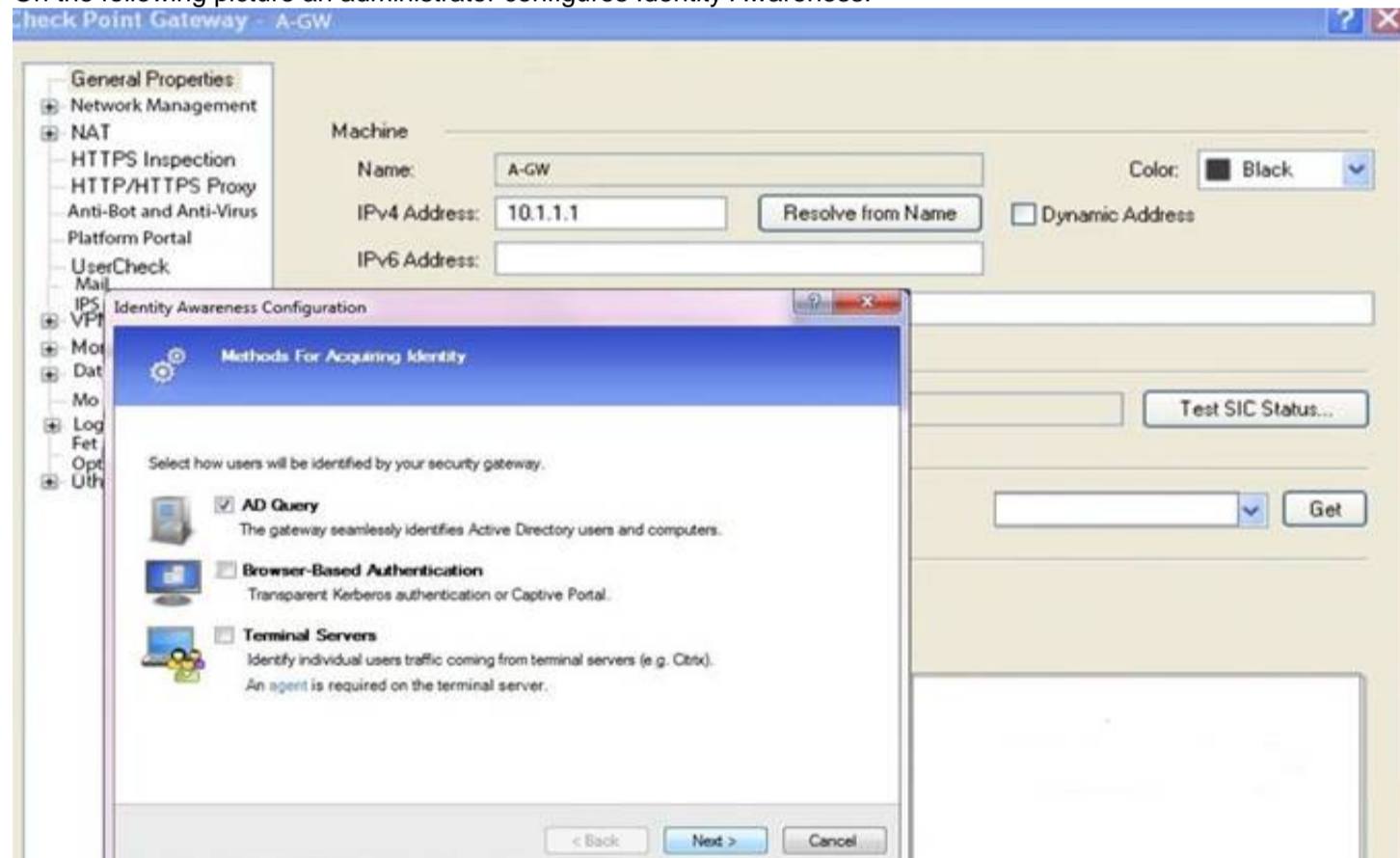
- A. ReverseCLIProxy
- B. ReverseProxyCLI
- C. ReverseProxy
- D. ProxyReverseCLI

Answer: C

NEW QUESTION 525

- (Exam Topic 4)

On the following picture an administrator configures Identity Awareness:



After clicking “Next” the above configuration is supported by:

- A. Kerberos SSO which will be working for Active Directory integration
- B. Based on Active Directory integration which allows the Security Gateway to correlate Active Directory users and machines to IP addresses in a method that is completely transparent to the user.
- C. Obligatory usage of Captive Portal.
- D. The ports 443 or 80 what will be used by Browser-Based and configured Authentication.

Answer: B

NEW QUESTION 526

- (Exam Topic 4)

What is the best method to upgrade a Security Management Server to R81.x when it is not connected to the Internet?

- A. CPUSE offline upgrade only
- B. Advanced upgrade or CPUSE offline upgrade
- C. Advanced Upgrade only
- D. SmartUpdate offline upgrade

Answer: B

NEW QUESTION 528

- (Exam Topic 4)

In terms of Order Rule Enforcement, when a packet arrives at the gateway, the gateway checks it against the rules in the top Policy Layer, sequentially from top to bottom Which of the following statements is correct?

- A. If the Action of the matching rule is Accept the gateway will drop the packet
- B. If the Action of the matching rule is Drop, the gateway continues to check rules in the next Policy Layer down

- C. If the Action of the matching rule is Drop the gateway stops matching against later rules in the Policy Rule Base and drops the packet
- D. If the rule does not matched in the Network policy it will continue to other enabled polices

Answer: C

Explanation:

https://sc1.checkpoint.com/documents/R81/CP_R81_SecMGMT/html_frameset.htm?topic=documents/R81/CP_

NEW QUESTION 532

- (Exam Topic 4)

What destination versions are supported for a Multi-Version Cluster Upgrade?

- A. R81.40 and later
- B. R76 and later
- C. R70 and Later
- D. R81.10 and Later

Answer: D

NEW QUESTION 534

- (Exam Topic 4)

Which of the following is NOT an attribute of packet acceleration?

- A. Source address
- B. Protocol
- C. Destination port
- D. VLAN Tag

Answer: D

NEW QUESTION 536

- (Exam Topic 4)

What CLI utility runs connectivity tests from a Security Gateway to an AD domain controller?

- A. test_connectivity_ad -d <domain>
- B. test_ldap_connectivity -d <domain>
- C. test_ad_connectivity -d <domain>
- D. ad_connectivity_test -d <domain>

Answer: C

Explanation:

<https://sc1.checkpoint.com/documents/R81.30/WebAdminGuides/EN/>

[CP_R81.30_CLI_ReferenceGuide/html_frameset.htm?topic=documents/R81.30/WebAdminGuides/EN/CP_R81.30_CLI_ReferenceGuide/200877](https://sc1.checkpoint.com/documents/R81.30/WebAdminGuides/EN/CP_R81.30_CLI_ReferenceGuide/html_frameset.htm?topic=documents/R81.30/WebAdminGuides/EN/CP_R81.30_CLI_ReferenceGuide/200877)

NEW QUESTION 539

- (Exam Topic 4)

What mechanism can ensure that the Security Gateway can communicate with the Management Server with ease in situations with overwhelmed network resources?

- A. The corresponding feature is new to R81.10 and is called "Management Data Plane Separation"
- B. The corresponding feature is called "Dynamic Dispatching"
- C. There is a feature for ensuring stable connectivity to the management server and is done via Priority Queuing.
- D. The corresponding feature is called "Dynamic Split"

Answer: A

NEW QUESTION 540

- (Exam Topic 4)

SmartConsole R81 x requires the following ports to be open for SmartEvent.

- A. 19009, 19090 & 443
- B. 19009, 19004 & 18190
- C. 18190 & 443
- D. 19009, 18190 & 443

Answer: D

NEW QUESTION 543

- (Exam Topic 4)

After verifying that API Server is not running, how can you start the API Server?

- A. Run command "set api start" in CLISH mode
- B. Run command "mgmt cli set api start" in Expert mode
- C. Run command "mgmt api start" in CLISH mode
- D. Run command "api start" in Expert mode

Answer: B

NEW QUESTION 548

- (Exam Topic 4)

Which command is used to add users to or from existing roles?

- A. Add rba user <User Name> roles <List>
- B. Add rba user <User Name>
- C. Add user <User Name> roles <List>
- D. Add user <User Name>

Answer: A

NEW QUESTION 550

- (Exam Topic 4)

What command is used to manually failover a cluster during a zero downtime upgrade?

- A. set cluster member down
- B. cpstop
- C. clusterXL_admin down
- D. set clusterXL down

Answer: C

NEW QUESTION 551

- (Exam Topic 4)

Which of the following Central Deployment is NOT a limitation in R81.10 SmartConsole?

- A. Security Gateway Clusters in Load Sharing mode
- B. Dedicated Log Server
- C. Dedicated SmartEvent Server
- D. Security Gateways/Clusters in ClusterXL HA new mode

Answer: D

NEW QUESTION 556

- (Exam Topic 4)

The “MAC magic” value must be modified under the following condition:

- A. There is more than one cluster connected to the same VLAN
- B. A firewall cluster is configured to use Multicast for CCP traffic
- C. There are more than two members in a firewall cluster
- D. A firewall cluster is configured to use Broadcast for CCP traffic

Answer: D

NEW QUESTION 560

- (Exam Topic 4)

Check Point ClusterXL Active/Active deployment is used when:

- A. Only when there is Multicast solution set up.
- B. There is Load Sharing solution set up.
- C. Only when there is Unicast solution set up.
- D. There is High Availability solution set up.

Answer: D

NEW QUESTION 565

- (Exam Topic 4)

Which two Cluster Solutions are available under R81.10?

- A. ClusterXL and NSRP
- B. VRRP and HSRP
- C. VRRP and IP Clustering
- D. ClusterXL and VRitP

Answer: D

NEW QUESTION 567

- (Exam Topic 4)

If a “ping”-packet is dropped by FW1 Policy –on how many inspection Points do you see this packet in “fw monitor”?

- A. “i”, “I” and “o”
- B. I don’t see it in fw monitor
- C. “i” only

D. "i" and "I"

Answer: C

NEW QUESTION 569

- (Exam Topic 4)

Fill in the blank: _____ information is included in "Full Log" tracking option, but is not included in "Log" tracking option?

- A. Destination port
- B. Data type
- C. File attributes
- D. Application

Answer: B

NEW QUESTION 574

.....

THANKS FOR TRYING THE DEMO OF OUR PRODUCT

Visit Our Site to Purchase the Full Set of Actual 156-315.81 Exam Questions With Answers.

We Also Provide Practice Exam Software That Simulates Real Exam Environment And Has Many Self-Assessment Features. Order the 156-315.81 Product From:

<https://www.2passeasy.com/dumps/156-315.81/>

Money Back Guarantee

156-315.81 Practice Exam Features:

- * 156-315.81 Questions and Answers Updated Frequently
- * 156-315.81 Practice Questions Verified by Expert Senior Certified Staff
- * 156-315.81 Most Realistic Questions that Guarantee you a Pass on Your FirstTry
- * 156-315.81 Practice Test Questions in Multiple Choice Formats and Updatesfor 1 Year