

# Exam Questions N10-009

CompTIA Network+ Exam

<https://www.2passeasy.com/dumps/N10-009/>



### NEW QUESTION 1

- (Topic 3)

A network technician is attempting to harden a commercial switch that was recently purchased. Which of the following hardening techniques best mitigates the use of publicly available information?

- A. Changing the default password
- B. Blocking inbound SSH connections
- C. Removing the gateway from the network configuration
- D. Restricting physical access to the switch

**Answer:** A

#### Explanation:

Changing the default password is a hardening technique that best mitigates the use of publicly available information, such as vendor documentation, online forums, or hacking tools, that may reveal the default credentials of a commercial switch. By changing the default password to a strong and unique one, the network technician can prevent unauthorized access to the switch configuration and management. References:

? Network Hardening - N10-008 CompTIA Network+ : 4.3 - YouTube<sup>1</sup>

? CompTIA Network+ Certification Exam Objectives, page 151

### NEW QUESTION 2

- (Topic 3)

Which of the following compromises internet-connected devices and makes them vulnerable to becoming part of a botnet? (Select TWO).

- A. Deauthentication attack
- B. Malware infection
- C. IP spoofing
- D. Firmware corruption
- E. Use of default credentials
- F. Dictionary attack

**Answer:** BE

### NEW QUESTION 3

- (Topic 3)

During an incident, an analyst sends reports regularly to the investigation and leadership teams. Which of the following best describes how PII should be safeguarded during an incident?

- A. Implement data encryption and store the data so only the company has access.
- B. Ensure permissions are limited to the investigation team and encrypt the data.
- C. Implement data encryption and create a standardized procedure for deleting data that is no longer needed.
- D. Ensure the permissions are open only to the company.

**Answer:** C

#### Explanation:

PII stands for Personally Identifiable Information, which is any data that can be used to identify, contact, or locate a specific individual, such as name, address, phone number, email, social security number, and so on. PII should be safeguarded during an incident to protect the privacy and security of the individuals involved, and to comply with the legal and ethical obligations of the organization. One way to safeguard PII during an incident is to implement data encryption, which is a process of transforming data into an unreadable format that can only be accessed by authorized parties who have the decryption key. Data encryption can prevent unauthorized access, modification, or disclosure of PII by malicious actors or third parties. Another way to safeguard PII during an incident is to create a standardized procedure for deleting data that is no longer needed, such as after the incident is resolved or the investigation is completed. Deleting data that is no longer needed can reduce the risk of data breaches, data leaks, or data theft, and can also save storage space and resources. A standardized procedure for deleting data can ensure that the data is erased securely and completely, and that the deletion process is documented and audited.

References

? 1: CompTIA Network+ N10-008 Certification Study Guide, page 304-305

? 2: CompTIA Network+ N10-008 Exam Subnetting Quiz, question 13

? 3: CompTIA Network+ N10-008 Certification Practice Test, question 5

? 4: Data Encryption – N10-008 CompTIA Network+ : 3.1

### NEW QUESTION 4

- (Topic 3)

A PC and a network server have no network connectivity, and a help desk technician is attempting to resolve the issue. The technician plans to run a constant ping command from a Windows workstation while testing various possible reasons for the connectivity issue. Which of the following should the technician use?

- A. ping —w
- B. ping -i
- C. ping —s
- D. ping —t

**Answer:** D

#### Explanation:

ping -t is an option for the ping command in Windows that allows the user to send continuous ping requests to a target until stopped by pressing Ctrl-C. This can help the technician run a constant ping command while testing various possible reasons for the connectivity issue. ping -w is an option for the ping command in Windows that allows the user to specify a timeout value in milliseconds for each ping request. ping -i is an option for the ping command in Linux that allows the user to specify the time interval in seconds between each ping request. ping -s is an option for the ping command in Linux that allows the user to specify the size of the data payload in bytes for each ping request.

References: How to Use the Ping Command in Windows - Lifewire (<https://www.lifewire.com/ping-command-2618099>)

#### NEW QUESTION 5

- (Topic 3)

An organization has a security requirement that all network connections can be traced back to a user. A network administrator needs to identify a solution to implement on the wireless network. Which of the following is the best solution?

- A. Implementing enterprise authentication
- B. Requiring the use of PSKs
- C. Configuring a captive portal for users
- D. Enforcing wired equivalent protection

**Answer:** A

#### Explanation:

Enterprise authentication is a method of securing wireless networks that uses an external authentication server, such as RADIUS, to verify the identity of users and devices. Enterprise authentication can provide user traceability by logging the network connections and activities of each authenticated user. This can help the organization meet its security requirement and comply with any regulations or policies that mandate user accountability<sup>12</sup>.

References:

? CompTIA Network+ N10-008 Certification Exam Objectives, page 83

? CompTIA Network+ Cert Guide: Wireless Networking, page 13

#### NEW QUESTION 6

- (Topic 3)

Which of the following protocols can be routed?

- A. FCoE
- B. Fibre Channel
- C. iSCSI
- D. NetBEUI

**Answer:** C

#### Explanation:

iSCSI (Internet Small Computer System Interface) is a protocol that allows SCSI commands to be transported over IP networks<sup>1</sup>. iSCSI can be routed because it contains a network address and a device address, as required by a routable protocol<sup>2</sup>. iSCSI can be used to access block-level storage devices over a network, such as SAN (Storage Area Network).

FCoE (Fibre Channel over Ethernet) is a protocol that allows Fibre Channel frames to be encapsulated and transported over Ethernet networks<sup>1</sup>. FCoE cannot be routed because it does not contain a network address, only a device address. FCoE operates at the data link layer and requires special switches and adapters to support it. FCoE can also be used to access block-level storage devices over a network, such as SAN.

Fibre Channel is a protocol that provides high-speed and low-latency communication between servers and storage devices<sup>1</sup>. Fibre Channel cannot be routed because it does not use IP networks, but rather its own dedicated network infrastructure. Fibre Channel operates at the physical layer and the data link layer and requires special cables, switches, and adapters to support it. Fibre Channel can also be used to access block-level storage devices over a network, such as SAN. NetBEUI (NetBIOS Extended User Interface) is an old protocol that provides session-level communication between devices on a local network<sup>1</sup>. NetBEUI cannot be routed because it does not contain a network address, only a device address. NetBEUI operates at the transport layer and relies on NetBIOS for name resolution. NetBEUI is obsolete and has been replaced by other protocols, such as TCP/IP.

#### NEW QUESTION 7

- (Topic 3)

A Chief Information Officer wants to monitor network breaching in a passive, controlled manner. Which of the following would be best to implement?

- A. Honeypot
- B. Perimeter network
- C. Intrusion prevention system
- D. Port security

**Answer:** A

#### Explanation:

A honeypot is a decoy system that is designed to attract and trap hackers who attempt to breach the network. A honeypot mimics a real system or network, but contains fake or non-sensitive data and applications. A honeypot can be used to monitor network breaching in a passive, controlled manner, as it allows the network administrator to observe the hacker's behavior, techniques, and tools without compromising the actual network or data. A honeypot can also help to divert the hacker's attention from the real targets and collect forensic evidence for further analysis or prosecution.

#### NEW QUESTION 8

- (Topic 3)

A user is required to log in to a main web application, which then grants the user access to all other programs needed to complete job-related tasks. Which of the following authentication methods does this setup describe?

- A. SSO
- B. RADIUS
- C. TACACS+
- D. Multifactor authentication
- E. 802.1X

**Answer:** A

#### Explanation:

The authentication method that this setup describes is SSO (Single Sign-On). SSO is a technique that allows a user to log in once to a main web application and then access multiple other applications or services without having to re-enter credentials. SSO simplifies the user experience and reduces the number of passwords to remember and manage. References: CompTIA Network+ N10-008 Certification Study Guide, page 371; The Official CompTIA Network+ Student

Guide (Exam N10-008), page 14-5.

#### NEW QUESTION 9

- (Topic 3)

A network administrator is given the network 80.87.78.0/26 for specific device assignments. Which of the following describes this network?

- A. 80.87.78.0 - 80.87.78.14
- B. 80.87.78.0 - 80.87.78.110
- C. 80.87.78.1 - 80.87.78.62
- D. 80.87.78.1 - 80.87.78.158

**Answer:** C

#### Explanation:

The network 80.87.78.0/26 is a Class A network with a subnet mask of /26, which means that it contains 26 bits of network information and 6 bits of host information.

The range of valid host addresses for this network is 80.87.78.1 to 80.87.78.62. Any addresses outside of this range are reserved for special purposes or are not used.

#### NEW QUESTION 10

- (Topic 3)

A customer needs six usable IP addresses. Which of the following best meets this requirement?

- A. 255.255.255.128
- B. 255.255.255.192
- C. 255.255.255.224
- D. 255.255.255.240

**Answer:** C

#### NEW QUESTION 10

- (Topic 3)

A customer is adding fiber connectivity between adjacent buildings. A technician terminates the multimode cable to the fiber patch panel. After the technician connects the fiber patch cable, the indicator light does not come on. Which of the following should a technician try first to troubleshoot this issue?

- A. Reverse the fibers.
- B. Rerterminate the fibers.
- C. Verify the fiber size.
- D. Examine the cable runs for visual faults.

**Answer:** A

#### Explanation:

One of the most common causes of fiber connectivity issues is the reversal of the fibers. This means that the transmit (TX) and receive (RX) ports on one end of the fiber link are not matched with the corresponding ports on the other end. For example, if the TX port on one device is connected to the TX port on another device, and the same for the RX ports, then the devices will not be able to communicate with each other. This can result in no indicator light, no link, or no data transmission<sup>12</sup>.

To troubleshoot this issue, the technician should first try to reverse the fibers. This can be done by swapping the connectors at one end of the fiber patch cable, or by using a crossover adapter or cable that reverses the polarity of the fibers. The technician should then check if the indicator light comes on and if the devices can communicate properly<sup>12</sup>. The other options are not the first steps to troubleshoot this issue. Rerterminating the fibers is a time-consuming and costly process that should be done only if there is evidence of physical damage or poor quality of the termination. Verifying the fiber size is not relevant in this scenario, as multimode fiber is compatible with multimode fiber, and any mismatch in core diameter or bandwidth would result in high attenuation, not complete loss of signal. Examining the cable runs for visual faults is a useful technique, but it requires a special tool called a visual fault locator (VFL) that emits a visible red light through the fiber and shows any breaks or bends along the cable. However, a VFL cannot detect polarity issues or connector problems, so it is not sufficient to troubleshoot this issue

#### NEW QUESTION 14

- (Topic 3)

A network technician 13 troubleshooting a specific port on a switch. Which of the following commands should the technician use to see the port configuration?

- A. show route
- B. show Interface
- C. show arp
- D. show port

**Answer:** B

#### Explanation:

To see the configuration of a specific port on a switch, the network technician should use the "show interface" command. This command provides detailed information about the interface, including the current configuration, status, and statistics for the interface.

#### NEW QUESTION 15

- (Topic 3)

A technician discovered that some information on the local database server was changed during a file transfer to a remote server. Which of the following should concern the technician the MOST?

- A. Confidentiality
- B. Integrity

- C. DDoS
- D. On-path attack

**Answer:** B

**Explanation:**

The technician should be most concerned about data integrity and security. If information on the local database server was changed during a file transfer to a remote server, it could indicate that unauthorized access or modifications were made to the data. It could also indicate a failure in the file transfer process, which could result in data loss or corruption. The technician should investigate the cause of the changes and take steps to prevent it from happening again in the future. Additionally, they should verify the integrity of the data and restore it from a backup if necessary to ensure that the correct and complete data is available. The technician should also take appropriate actions such as notifying the system administrator and management of the incident, and following the incident management process to minimize the damage caused by the incident.

**NEW QUESTION 19**

- (Topic 3)

Which of the following is the best action to take before sending a network router to be recycled as electronic waste?

- A. Turn on port security.
- B. Shred the switch hard drive.
- C. Back up and erase the configuration.
- D. Remove the company asset ID tag.

**Answer:** C

**Explanation:**

Before disposing of a network router, it is important to back up and erase the configuration to prevent unauthorized access to sensitive data and network settings. A network router may contain information such as passwords, IP addresses, firewall rules, VPN settings, and other network parameters that could be exploited by hackers or malicious users. By backing up the configuration, you can preserve the network settings for future reference or reuse. By erasing the configuration, you can wipe out the data and restore the router to its factory default state.

**NEW QUESTION 22**

- (Topic 3)

Which of the following protocols is widely used in large-scale enterprise networks to support complex networks with multiple routers and balance traffic load on multiple links?

- A. OSPF
- B. RIPv2
- C. QoS
- D. STP

**Answer:** A

**NEW QUESTION 27**

- (Topic 3)

A Wi-Fi network was recently deployed in a new, multilevel building. Several issues are now being reported related to latency and drops in coverage. Which of the following is the FIRST step to troubleshoot the issues?

- A. Perform a site survey.
- B. Review the AP placement
- C. Monitor channel utilization.
- D. Test cable attenuation.

**Answer:** A

**NEW QUESTION 32**

- (Topic 3)

A technician is troubleshooting network connectivity from a wall jack. Readings from a multimeter indicate extremely low ohmic values instead of the rated impedance from the switchport. Which of the following is the MOST likely cause of this issue?

- A. Incorrect transceivers
- B. Faulty LED
- C. Short circuit
- D. Upgraded OS version on switch

**Answer:** C

**Explanation:**

A short circuit is a condition where two conductors in a circuit are connected unintentionally, creating a low resistance path for the current. This causes the voltage to drop and the current to increase, which can damage the circuit or cause a fire. A multimeter can measure the resistance or impedance of a circuit, and if it shows extremely low values, it indicates a short circuit.

**NEW QUESTION 33**

- (Topic 3)

A technician monitors a switch interface and notices it is not forwarding frames on a trunked port. However, the cable and interfaces are in working order. Which of the following is MOST likely the cause of the issue?

- A. STP policy
- B. Flow control

- C. 802.1Q configuration
- D. Frame size

**Answer:** C

**Explanation:**

802.1Q configuration is the most likely cause of the issue where a switch interface is not forwarding frames on a trunked port. 802.1Q is a standard that defines how to create and manage virtual LANs (VLANs) on a switched network. VLANs are logical segments of a network that group devices based on criteria such as function, department, or security level. VLANs can improve network performance, security, and manageability by reducing broadcast domains, isolating traffic, and enforcing policies. A trunked port is a switch port that can carry traffic from multiple VLANs over a single physical link by adding a VLAN tag to each frame. A VLAN tag is a 4-byte header that identifies the VLAN ID and priority of each frame. A trunked port requires 802.1Q configuration to specify which VLANs are allowed or disallowed on the port, and which VLAN is the native or untagged VLAN. If the 802.1Q configuration is incorrect or mismatched between switches, frames may be dropped or misrouted on the trunked port. References: [CompTIA Network+ Certification Exam Objectives], VLAN Trunking Protocol (VTP) Explained | NetworkLessons.com

**NEW QUESTION 37**

- (Topic 3)

Which of the following records can be used to track the number of changes on a DNS zone?

- A. SOA
- B. SRV
- C. PTR
- D. NS

**Answer:** A

**Explanation:**

The DNS 'start of authority' (SOA) record stores important information about a domain or zone such as the email address of the administrator, when the domain was last updated, and how long the server should wait between refreshes. All DNS zones need an SOA record in order to conform to IETF standards. SOA records are also important for zone transfers.

**NEW QUESTION 40**

- (Topic 3)

Which of the following is most likely to be implemented to actively mitigate intrusions on a host device?

- A. HIDS
- B. MDS
- C. HIPS
- D. NIPS

**Answer:** A

**Explanation:**

HIDS (host-based intrusion detection system) is a type of security software that monitors and analyzes the activity on a host device, such as a computer or a server. HIDS can detect and alert on intrusions, such as malware infections, unauthorized access, configuration changes, or policy violations. HIDS can also actively mitigate intrusions by blocking or quarantining malicious processes, files, or network connections<sup>1</sup>.

HIPS (host-based intrusion prevention system) is similar to HIDS, but it can also prevent intrusions from happening in the first place by enforcing security policies and rules on the host device<sup>2</sup>. MDS (multilayer switch) is a network device that combines the functions of a switch and a router, and it does not directly protect a host device from intrusions<sup>3</sup>. NIPS (network-based intrusion prevention system) is a network device that monitors and blocks malicious traffic on the network level, and it does not operate on the host device level<sup>4</sup>.

**NEW QUESTION 41**

- (Topic 3)

An engineer recently decided to upgrade the firmware on a router. During the upgrade, the help desk received calls about a network outage, and a critical ticket was opened. The network manager would like to create a policy to prevent this from happening in the future. Which of the following documents should the manager create?

- A. Change management
- B. incident response
- C. Standard operating procedure
- D. System life cycle

**Answer:** A

**NEW QUESTION 45**

- (Topic 3)

Which of the following combinations of single cables and transceivers will allow a server to have 40GB of network throughput? (Select two).

- A. SFP+
- B. SFP
- C. QSFP+
- D. Multimode
- E. Cat 6a
- F. Cat5e

**Answer:** CD

**Explanation:**

QSFP+ is a type of transceiver that supports 40 gigabit Ethernet (40GbE) over four lanes of 10 gigabit Ethernet (10GbE) each. QSFP+ stands for quad small form-

factor pluggable plus, and it is a compact and hot-swappable module that plugs into a QSFP+ port on a network device. QSFP+ transceivers can support various types of cables and connectors, such as direct attach copper (DAC), active optical cable (AOC), or fiber optic cable. Multimode is a type of fiber optic cable that supports multiple modes of light propagation within the core. Multimode fiber optic cable can carry higher bandwidth and data rates than single-mode fiber optic cable, but over shorter distances. Multimode fiber optic cable is commonly used for short-reach applications, such as within a data center or a campus network. Multimode fiber optic cable can be paired with QSFP+ transceivers to achieve 40GbE connectivity.

The other options are not correct because they do not support 40GbE. They are:

? SFP+. SFP+ is a type of transceiver that supports 10 gigabit Ethernet (10GbE) over a single lane. SFP+ stands for small form-factor pluggable plus, and it is a compact and hot-swappable module that plugs into an SFP+ port on a network device. SFP+ transceivers can support various types of cables and connectors, such as direct attach copper (DAC), active optical cable (AOC), or fiber optic cable. However, SFP+ transceivers cannot support 40GbE by themselves, unless they are used in a breakout configuration with a QSFP+ transceiver.

? SFP. SFP is a type of transceiver that supports 1 gigabit Ethernet (1GbE) over a single lane. SFP stands for small form-factor pluggable, and it is a compact and hot-swappable module that plugs into an SFP port on a network device. SFP transceivers can support various types of cables and connectors, such as twisted-pair copper, coaxial cable, or fiber optic cable. However, SFP transceivers cannot support 40GbE by themselves, unless they are used in a breakout configuration with a QSFP+ transceiver.

? Cat 6a. Cat 6a is a type of twisted-pair copper cable that supports 10 gigabit

Ethernet (10GbE) over distances up to 100 meters. Cat 6a stands for category 6 augmented, and it is an enhanced version of Cat 6 cable that offers better performance and reduced crosstalk. Cat 6a cable can be paired with 10Gbase-T transceivers to achieve 10GbE connectivity. However, Cat 6a cable cannot support 40GbE by itself, unless it is used in a breakout configuration with a QSFP+ transceiver.

? Cat 5e. Cat 5e is a type of twisted-pair copper cable that supports 1 gigabit

Ethernet (1GbE) over distances up to 100 meters. Cat 5e stands for category 5 enhanced, and it is an improved version of Cat 5 cable that offers better performance and reduced crosstalk. Cat 5e cable can be paired with 1000base-T transceivers to achieve 1GbE connectivity. However, Cat 5e cable cannot support 40GbE by itself, unless it is used in a breakout configuration with a QSFP+ transceiver.

References1: QSFP+ - an overview | ScienceDirect Topics2: Multimode Fiber - an overview | ScienceDirect Topics3: Network+ (Plus) Certification | CompTIA IT Certifications4: SFP+ - an overview | ScienceDirect Topics5: SFP - an overview | ScienceDirect Topics6: Cat 6a - an overview | ScienceDirect Topics7: [Cat 5e - an overview | ScienceDirect Topics]

#### NEW QUESTION 48

- (Topic 3)

A bank installed a new smart TV to stream online video services, but the smart TV was not able to connect to the branch Wi-Fi. The next day, a technician was able to connect the TV to the Wi-Fi, but a bank laptop lost network access at the same time. Which of the following is the MOST likely cause?

- A. DHCP scope exhaustion
- B. AP configuration reset
- C. Hidden SSID
- D. Channel overlap

**Answer:** A

#### Explanation:

DHCP scope exhaustion is the situation when a DHCP server runs out of available IP addresses to assign to clients. DHCP stands for Dynamic Host Configuration Protocol, which is a network protocol that automatically assigns IP addresses and other configuration parameters to clients on a network. A DHCP scope is a range of IP addresses that a DHCP server can distribute to clients. If the DHCP scope is exhausted, new clients will not be able to obtain an IP address and connect to the network. This can explain why the smart TV was not able to connect to the branch Wi-Fi on the first day, and why the bank laptop lost network access on the next day when the TV was connected. The technician should either increase the size of the DHCP scope or reduce the lease time of the IP addresses to avoid DHCP scope exhaustion. References: [CompTIA Network+ Certification Exam Objectives], DHCP Scope Exhaustion - What Is It? How Do You Fix It?

#### NEW QUESTION 51

- (Topic 3)

Which of the following DNS records maps an alias to a true name?

- A. AAAA
- B. NS
- C. TXT
- D. CNAME

**Answer:** D

#### Explanation:

A CNAME (Canonical Name) record is a type of DNS (Domain Name System) record that maps an alias name to a canonical or true domain name. For example, a CNAME record can map blog.example.com to example.com, which means that blog.example.com is an alias of example.com. A CNAME record is useful when you want to point multiple subdomains to the same IP address, or when you want to change the IP address of a domain without affecting the subdomains<sup>1</sup>.

#### NEW QUESTION 55

- (Topic 3)

Which of the following fiber connector types is the most likely to be used on a network interface card?

- A. LC
- B. SC
- C. ST
- D. MPO

**Answer:** A

#### Explanation:

LC (local connector) is the most likely fiber connector type to be used on a network interface card, because it is a small form factor connector that can fit more interfaces on a single card. LC connectors use square connectors that have a locking mechanism on the top, similar to an RJ45 copper connector. LC connectors are also compatible with SFP (small form-factor pluggable) modules that are often used to link a gigabit Ethernet port with a fiber network<sup>12</sup>.

References:

? Optical Fiber Connectors – CompTIA Network+ N10-007 – 2.11

? CompTIA Network+ Certification Exam Objectives2

#### NEW QUESTION 59

- (Topic 3)

Which of the following is the most accurate NTP time source that is capable of being accessed across a network connection?

- A. Stratum 0 device
- B. Stratum 1 device
- C. Stratum 7 device
- D. Stratum 16 device

**Answer: B**

#### Explanation:

NTP (Network Time Protocol) is a protocol that synchronizes the clocks of network devices with a reference time source. NTP uses a hierarchical system of time sources, called strata, to distribute the time information. A stratum 0 device is the most accurate time source, such as an atomic clock or a GPS receiver, but it is not directly accessible across a network connection. A stratum 1 device is a network device that is directly connected to a stratum 0 device, such as a dedicated NTP server or a router with a GPS antenna, and it acts as a primary time server for other network devices. A stratum 2 device is a network device that synchronizes its time with a stratum 1 device, and so on. The higher the stratum number, the lower the accuracy and reliability of the time source. A stratum 16 device is a network device that has no valid time source and is considered unsynchronized.

References:

? Part 1 of current page talks about how Bing is your AI-powered copilot for the web and provides various examples of how it can help you with different tasks, such as writing a joke, creating a table, or summarizing research. However, it does not mention anything about NTP or time sources.

? Part 2 of current page shows the search results for “ai powered search bing chat”, which include web, image, and news results. However, none of these results seem to be relevant to the question, as they are mostly about Bing’s features, products, or announcements, not about NTP or time sources.

? Therefore, I cannot find the answer or the explanation from the current page. I have to use my own knowledge and information from other sources to verify the answer and provide a short but comprehensive explanation. I will cite these sources using numerical references.

? : CompTIA Network+ Certification Exam Objectives, Version 8.0, Domain 2.0: Infrastructure, Objective 2.5: Given a scenario, implement network time synchronization, Subobjective 2.5.1: NTP, <https://www.comptia.jp/pdf/comptia-network-n10-008-exam-objectives.pdf>

? : Network Time Protocol (NTP), <https://www.cisco.com/c/en/us/about/press/internet-protocol-journal/back-issues/table-contents-58/154-ntp.html>

? : How NTP Works, <https://www.meinbergglobal.com/english/info/ntp.htm>

#### NEW QUESTION 62

- (Topic 3)

A customer reports there is no access to resources following the replacement of switches. A technician goes to the site to examine the configuration and discovers redundant links between two switches. Which of the following is the reason the network is not functional?

- A. The ARP cache has become corrupt.
- B. CSMA/CD protocols have failed.
- C. STP is not configured.
- D. The switches are incompatible models

**Answer: C**

#### Explanation:

The reason the network is not functional is that STP (Spanning Tree Protocol) is not configured on the switches. STP is a protocol that prevents loops in a network topology by blocking redundant links between switches. If STP is not enabled, the switches will forward broadcast frames endlessly, creating a broadcast storm that consumes network resources and disrupts communication. References: CompTIA Network+ N10-008 Certification Study Guide, page 67; The Official CompTIA Network+ Student Guide (Exam N10-008), page 2-14.

#### NEW QUESTION 66

- (Topic 3)

Users are reporting performance issues when attempting to access the main fileshare server. Which of the following steps should a network administrator perform next based on the network troubleshooting methodology?

- A. Implement a fix to resolve the connectivity issues.
- B. Determine if anything has changed.
- C. Establish a theory of probable cause.
- D. Document all findings, actions, and lessons learned.

**Answer: B**

#### Explanation:

According to the network troubleshooting methodology, the first step is to identify the problem and gather information about the current state of the network using the network troubleshooting tools that are available<sup>1</sup>. The next step is to determine if anything has changed in the network configuration, environment, or usage that could have caused or contributed to the performance issues<sup>1</sup>. This step helps to narrow down the possible causes and eliminate irrelevant factors. For example, the network administrator could check if there were any recent updates, patches, or modifications to the fileshare server or the network devices that connect to it. They could also check if there was an increase in network traffic or demand for the fileshare server resources<sup>2</sup>.

The other options are not correct because they are not the next steps in the network troubleshooting methodology. Implementing a fix to resolve the connectivity issues (A) is premature without determining the root cause of the problem. Establishing a theory of probable cause © is a later step that requires testing and verification. Documenting all findings, actions, and lessons learned (D) is the final step that should be done after resolving the problem and restoring normal network operations<sup>1</sup>.

#### NEW QUESTION 67

- (Topic 3)

Which of the following BEST describes a north-south traffic flow?

- A. A public internet user accessing a published web server
- B. A database server communicating with another clustered database server

- C. A Layer 3 switch advertising routes to a router
- D. A management application connecting to managed devices

**Answer:** A

**Explanation:**

A north-south traffic flow is a term used to describe the communication between a user or device outside the network and a server or service inside the network. For example, a public internet user accessing a published web server is a north-south traffic flow. This type of traffic flow typically crosses the network perimeter and requires security measures such as firewalls and VPNs. References: CompTIA Network+ N10-008 Certification Study Guide, page 16; The Official CompTIA Network+ Student Guide (Exam N10-008), page 1- 9.

North-south traffic flow refers to the flow of traffic between the internal network of an organization and the external world. This type of traffic typically flows from the internet to the organization's internal network, and back again.

Examples of north-south traffic flow include:

- ? A public internet user accessing a published web server
- ? A remote employee connecting to a VPN
- ? An email client sending email to an external server
- ? A customer connecting to an e-commerce website

References:

- ? CompTIA Network+ N10-008 Exam Objectives, Version 5.0, August 2022, page 12
- ? CompTIA Network+ Certification Study Guide, Seventh Edition, Todd Lammle, Sybex, 2022, page 17

**NEW QUESTION 68**

- (Topic 3)

A network technician wants to find the shortest path from one node to every other node in the network. Which of the following algorithms will provide the FASTEST convergence time?

- A. A static algorithm
- B. A link-state algorithm
- C. A distance-vector algorithm
- D. A path-vector algorithm

**Answer:** B

**Explanation:**

A link-state algorithm is a routing algorithm that uses information about the state of each link in the network to calculate the shortest path from one node to every other node. A link-state algorithm requires each router to maintain a complete map of the network topology and exchange link-state advertisements with its neighbors periodically or when a change occurs. A link-state algorithm uses a mathematical formula called Dijkstra's algorithm to find the shortest path based on the link costs. A link-state algorithm provides the fastest convergence time because it can quickly detect and adapt to network changes. References: [CompTIA Network+ Certification Exam Objectives], [Link-state routing protocol - Wikipedia]

**NEW QUESTION 70**

- (Topic 3)

An ISP is providing Internet to a retail store and has terminated its point of connection using a standard Cat 6 pin-out Which of me following terminations should the technician use when running a cable from the ISP's port lo the front desk?

- A. F-type connector
- B. TIA/E1A-56S-B
- C. LC
- D. SC

**Answer:** B

**Explanation:**

The termination that the technician should use when running a cable from the ISP's port to the front desk is B. TIA/EIA-568-B. This is a standard pin-out for Cat 6 cables that is used for Ethernet and other network physical layers1. It specifies how to arrange the eight wires in an RJ45 connector, which is a common type of connector for network cables.

**NEW QUESTION 74**

- (Topic 3)

Users are reporting poor wireless performance in some areas of an industrial plant The wireless controller is measuring a tow EIRP value compared to me recommendations noted on me most recent site survey. Which of the following should be verified or replaced for the EIRP value to meet the site survey's specifications? (Select TWO).

- A. AP transmit power
- B. Channel utilization
- C. Signal loss
- D. Update ARP tables
- E. Antenna gain
- F. AP association time

**Answer:** AE

**Explanation:**

? AP transmit power: You should check if your APs have sufficient power output and adjust them if needed. You should also make sure they are not exceeding regulatory limits for your region.

? Antenna gain: You should check if your antennas have adequate gain for your coverage area and replace them if needed. You should also make sure they are aligned properly and not obstructed by any objects.

In the scenario described, the wireless controller is measuring a low EIRP value compared to the recommendations noted in the most recent site survey. EIRP is the combination of the power transmitted by the access point and the antenna gain. Therefore, to increase the EIRP value to meet the site survey's specifications, the administrator should verify or replace the AP transmit power (option A) and the antenna gain (option E). This can be achieved by adjusting the transmit power

settings on the AP or by replacing the AP's antenna with one that has a higher gain

#### NEW QUESTION 75

- (Topic 3)

Which of the following would be used to adjust resources dynamically for a virtual web server under variable loads?

- A. Elastic computing
- B. Scalable networking
- C. Hybrid deployment
- D. Multitenant hosting

**Answer:** B

#### Explanation:

A technique used to adjust resources dynamically for a virtual web server under variable loads is called auto-scaling. Auto-scaling automatically increases or decreases the number of instances of a virtual web server in response to changes in demand, ensuring that the right amount of resources are available to handle incoming traffic. This can help to improve the availability and performance of a web application, as well as reduce costs by avoiding the need to provision and maintain excess capacity.

#### NEW QUESTION 80

- (Topic 3)

A network administrator is adding a new switch to the network. Which of the following network hardening techniques would be BEST to use once the switch is in production?

- A. Disable unneeded ports
- B. Disable SSH service
- C. Disable MAC filtering
- D. Disable port security

**Answer:** A

#### NEW QUESTION 85

- (Topic 3)

The Chief Executive Officer of a company wants to ensure business operations are not disrupted in the event of a disaster. The solution must have fully redundant equipment, real-time synchronization, and zero data loss. Which Of the following should be prepared?

- A. Cloud site
- B. Warm site
- C. Hot site
- D. Cold site

**Answer:** C

#### Explanation:

A hot site is a backup site that is fully equipped and ready to take over the operations of the primary site in the event of a disaster. A hot site has real-time synchronization with the primary site and can provide zero data loss. A hot site is the most expensive and reliable option for disaster recovery.

References: Network+ Study Guide Objective 5.3: Explain common scanning, monitoring and patching processes and summarize their expected outputs.

#### NEW QUESTION 88

- (Topic 3)

A user calls the IT department to report being unable to log in after locking the computer The user resets the password, but later in the day the user is again unable to log in after locking the computer Which of the following attacks against the user IS MOST likely taking place?

- A. Brute-force
- B. On-path
- C. Deauthentication
- D. Phishing

**Answer:** A

#### NEW QUESTION 89

- (Topic 3)

In which of the following components do routing protocols belong in a software-defined network?

- A. Infrastructure layer
- B. Control layer
- C. Application layer
- D. Management plane

**Answer:** B

#### Explanation:

A software-defined network (SDN) is a network architecture that decouples the control plane from the data plane and centralizes the network intelligence in a software controller. The control plane is the part of the network that makes decisions about how to route traffic, while the data plane is the part of the network that forwards traffic based on the control plane's instructions. The control layer is the layer in an SDN that contains the controller and the routing protocols that communicate with the network devices. The control layer is responsible for managing and configuring the network devices and providing them with the necessary information to forward traffic. References: <https://www.comptia.org/training/books/network-n10-008-study-guide> (page 378)

#### NEW QUESTION 90

- (Topic 3)

A technician installed an 8-port switch in a user's office. The user needs to add a second computer in the office, so the technician connects both PCs to the switch and connects the switch to the wall jack. However, the new PC cannot connect to network resources. The technician then observes the following:

- The new computer does not get an IP address on the client's VLAN.
- Both computers have a link light on their NICs.
- The new PC appears to be operating normally except for the network issue.
- The existing computer operates normally.

Which of the following should the technician do NEXT to address the situation?

- A. Contact the network team to resolve the port security issue.
- B. Contact the server team to have a record created in DNS for the new PC.
- C. Contact the security team to review the logs on the company's SIEM.
- D. Contact the application team to check NetFlow data from the connected switch.

**Answer:** A

#### NEW QUESTION 93

- (Topic 3)

Due to space constraints in an IDF, a network administrator can only do a single switch to accommodate three data networks. The administrator needs a configuration that will allow each device to access its expected network without additional connections. The configuration must also allow each device to access the rest of the network. Which of the following should the administrator do to meet these requirements? (Select TWO).

- A. Untag the three VLANs across the uplink
- B. Tag an individual VLAN across the uplink
- C. Untag an individual VLAN per device port
- D. Tag an individual VLAN per device port
- E. Tag the three VLANs across the uplink.
- F. Tag the three VLANs per device port.

**Answer:** AC

#### Explanation:

To achieve this, you should do two things:

? Tag the three VLANs across the uplink port that connects to another switch or router. This will allow data packets from different VLANs to cross over into other networks.

? Untag an individual VLAN per device port that connects to an end device. This will assign each device to its expected network without additional connections.

#### NEW QUESTION 94

- (Topic 3)

A technician is troubleshooting reports that a networked printer is unavailable. The printer's IP address is configured with a DHCP reservation, but the address cannot be pinged from the print server in the same subnet. Which of the following is MOST likely the cause of the connectivity failure?

- A. Incorrect VLAN
- B. DNS failure
- C. DHCP scope exhaustion
- D. Incorrect gateway

**Answer:** D

#### NEW QUESTION 95

- (Topic 3)

Which of the following topologies is designed to fully support applications hosted in on-premises data centers, public or private clouds, and SaaS services?

- A. SDWAN
- B. MAN
- C. PAN
- D. MPLS

**Answer:** A

#### NEW QUESTION 96

- (Topic 3)

A network administrator is configuring a new switch and wants to connect two ports to the core switch to ensure redundancy. Which of the following configurations would meet this requirement?

- A. Full duplex
- B. 802.1Q tagging
- C. Native VLAN
- D. Link aggregation

**Answer:** D

#### Explanation:

Link aggregation is a technique that allows multiple physical ports to be combined into a single logical channel, which provides increased bandwidth, load balancing, and redundancy. Link aggregation can be configured using protocols such as Link Aggregation Control Protocol (LACP) or static methods.

References

? Link aggregation is one of the common Ethernet switching features covered in Objective 2.3 of the CompTIA Network+ N10-008 certification exam1.

? Link aggregation can be used to connect two ports to the core switch to ensure redundancy23.

? Link aggregation can be configured using LACP or static methods23.

1: CompTIA Network+ Certification Exam Objectives, page 5 2: Interface Configurations – N10-008 CompTIA Network+ : 2.3 3: CompTIA Network+ N10-008 Cert Guide, Chapter 11, page 323

#### NEW QUESTION 100

- (Topic 3)

Which of the following is the IEEE link cost for a Fast Ethernet interface in STP calculations?

- A. 2
- B. 4
- C. 19
- D. 100

**Answer:** D

#### Explanation:

The IEEE standard for link cost for a Fast Ethernet interface is 100, and for a Gigabit Ethernet interface is 19. These values are based on the bandwidth of the interface, with lower values indicating a higher-bandwidth interface.

#### NEW QUESTION 105

- (Topic 3)

A wireless technician is working to upgrade the wireless infrastructure for a company. The company currently uses the 802.11g wireless standard on all access points. The company requires backward compatibility and is requesting the least expensive solution. Which of the following should the technician recommend to the company?

- A. 802.11a
- B. 802.11ac
- C. 802Hax
- D. 802.11n

**Answer:** D

#### Explanation:

\* 802.11n is a wireless standard that supports data rates up to 600 Mbps and operates in both 2.4 GHz and 5 GHz frequency bands. 802.11n is backward compatible with 802.11g, which operates only in 2.4 GHz band. 802.11n is the least expensive solution that can upgrade the wireless infrastructure for the company, as it does not require replacing all the access points or wireless devices

#### NEW QUESTION 110

- (Topic 3)

A network administrator needs to monitor traffic on a specific port on a switch. Which of the following should the administrator configure to accomplish the task?

- A. Port security
- B. Port tagging
- C. Port mirroring
- D. Media access control

**Answer:** C

#### Explanation:

Port mirroring is a technique that allows a network administrator to monitor the traffic on a specific port on a switch by sending a copy of the packets seen on that port to another port where a monitoring device is connected1. Port mirroring can be used to analyze and debug data, diagnose errors, or perform security audits on the network without affecting the normal operation of the switch

#### NEW QUESTION 113

- (Topic 3)

Which of the following best describe the functions of Layer 2 of the OSI model? (Select two).

- A. Local addressing
- B. Error preventing
- C. Logical addressing
- D. Error detecting
- E. Port addressing
- F. Error correcting

**Answer:** AD

#### Explanation:

Layer 2 of the OSI model, also known as the data link layer, is responsible for physical addressing and error detecting. Physical addressing refers to the use of MAC addresses to identify and locate devices on a network segment. Error detecting refers to the use of techniques such as checksums and CRCs to identify and correct errors in the data frames.

References:

? OSI Model | Computer Networking | CompTIA1

#### NEW QUESTION 117

- (Topic 3)

A technician is investigating why a PC cannot reach a file server with the IP address 192.168.8.129. Given the following TCP/IP network configuration:

Link-local IPv6 address	fe80::28e4:a7cc:a55e:4bea
IPv4 address	192.168.8.105
Subnet mask	255.255.255.128
Default gateway	192.168.8.1

Which of the following configurations on the PC is incorrect?

- A. Subnet mask
- B. IPv4 address
- C. Default gateway
- D. IPv6 address

**Answer:** C

**Explanation:**

The default gateway is the IP address of the router that connects the PC to other networks. The default gateway should be on the same subnet as the PC's IPv4 address. However, in this case, the default gateway is 192.168.9.1, which is on a different subnet than the PC's IPv4 address of 192.168.8.15. Therefore, the default gateway configuration on the PC is incorrect and prevents the PC from reaching the file server on another subnet.

**NEW QUESTION 122**

- (Topic 3)

Which of the following describes traffic going in and out of a data center from the internet?

- A. Demarcation point
- B. North-South
- C. Fibre Channel
- D. Spine and leaf

**Answer:** B

**NEW QUESTION 125**

- (Topic 3)

A malicious user is using special software to perform an on-path attack. Which of the following best practices should be configured to mitigate this threat?

- A. Dynamic ARP inspection
- B. Role-based access
- C. Control plane policing
- D. MAC filtering

**Answer:** A

**NEW QUESTION 127**

- (Topic 3)

A customer needs to distribute Ethernet to multiple computers in an office. The customer would like to use non-proprietary standards. Which of the following blocks does the technician need to install?

- A. 110
- B. 66
- C. Bix
- D. Krone

**Answer:** A

**Explanation:**

A 110 block is a type of punch-down block that is used to distribute Ethernet to multiple computers in an office. A punch-down block is a device that connects one group of wires to another group of wires by using a special tool that pushes the wires into slots on the block. A 110 block is a non-proprietary standard that supports up to Category 6 cabling and can be used for voice or data applications. References: <https://www.comptia.org/training/books/network-n10-008-study-guide> (page 64)

**NEW QUESTION 132**

- (Topic 3)

Which of the following protocols uses Dijkstra's algorithm to calculate the LOWEST cost between routers?

- A. RIP
- B. OSPF
- C. BGP
- D. EIGRP

**Answer:** B

**Explanation:**

OSPF stands for Open Shortest Path First and is a link-state routing protocol that uses Dijkstra's algorithm to calculate the lowest cost between routers. OSPF assigns a cost value to each link based on factors such as bandwidth, delay, or reliability, and builds a map of the network topology. OSPF then uses Dijkstra's algorithm to find the shortest path from each router to every other router in the network. RIP stands for Routing Information Protocol and is a distance-vector routing protocol that uses hop count as the metric to find the best path. BGP stands for Border Gateway Protocol and is a path-vector routing protocol that uses attributes such as AS path, local preference, or origin to select the best route. EIGRP stands for Enhanced Interior Gateway Routing Protocol and is a hybrid routing protocol that uses a composite metric based on bandwidth, delay, load, and reliability.

References: 1 Dijkstra's algorithm - Wikipedia ([https://en.wikipedia.org/wiki/Dijkstra%27s\\_algorithm](https://en.wikipedia.org/wiki/Dijkstra%27s_algorithm))

#### NEW QUESTION 133

- (Topic 3)

A company's web server is hosted at a local ISP. This is an example of:

- A. allocation.
- B. an on-premises data center.
- C. a branch office.
- D. a cloud provider.

**Answer:** D

#### NEW QUESTION 136

- (Topic 3)

A network engineer needs to change an entire subnet of SLAAC-configured workstation addresses. Which of the following methods would be the best for the engineer to use?

- A. Change the address prefix in ARP in order for the workstations to retrieve their new addresses.
- B. Change the address prefix in a router in order for the router to advertise the new prefix with an ND.
- C. Change the address prefix scope in a DHCP server in order for the workstations to retrieve their new addresses.
- D. Change the workstations' address prefix manually because an automated method does not exist.

**Answer:** B

#### Explanation:

SLAAC (Stateless Address Autoconfiguration) is a mechanism that enables each host on the network to auto-configure a unique IPv6 address without any device keeping track of which address is assigned to which node<sup>12</sup>. SLAAC uses link-local addresses and the interface's MAC address or a random number to generate the host portion of the IPv6 address<sup>2</sup>. SLAAC also relies on Router Solicitation (RS) and Router Advertisement (RA) messages to obtain the network prefix and other information from a router<sup>12</sup>. Therefore, to change an entire subnet of SLAAC-configured workstation addresses, the network engineer needs to change the address prefix in a router and let the router advertise the new prefix with an ND (Neighbor Discovery) message. This way, the workstations will receive the new prefix and update their IPv6 addresses accordingly<sup>3</sup>.

References<sup>1</sup> - IPv6 Stateless Address Auto-configuration (SLAAC) | NetworkAcademy.io<sup>2</sup> - IPv6 SLAAC – Stateless Address Autoconfiguration - Study-CCNA3 - Mastering IPv6

SLAAC Concepts and Configuration - Cisco Press

#### NEW QUESTION 139

- (Topic 3)

To access production applications and data, developers must first connect remotely to a different server From there, the developers are able to access production data Which of the following does this BEST represent?

- A. A management plane
- B. A proxy server
- C. An out-of-band management device
- D. A site-to-site VPN
- E. A jump box

**Answer:** E

#### NEW QUESTION 144

- (Topic 3)

Users are reporting intermittent Wi-Fi connectivity in specific parts of a building. Which of the following should the network administrator check FIRST when troubleshooting this issue? (Select TWO).

- A. Site survey
- B. EIRP
- C. AP placement
- D. Captive portal
- E. SSID assignment
- F. AP association time

**Answer:** AC

#### Explanation:

This is a coverage issue. WAP placement and power need to be checked. Site survey should be done NEXT because it takes a while.

#### NEW QUESTION 145

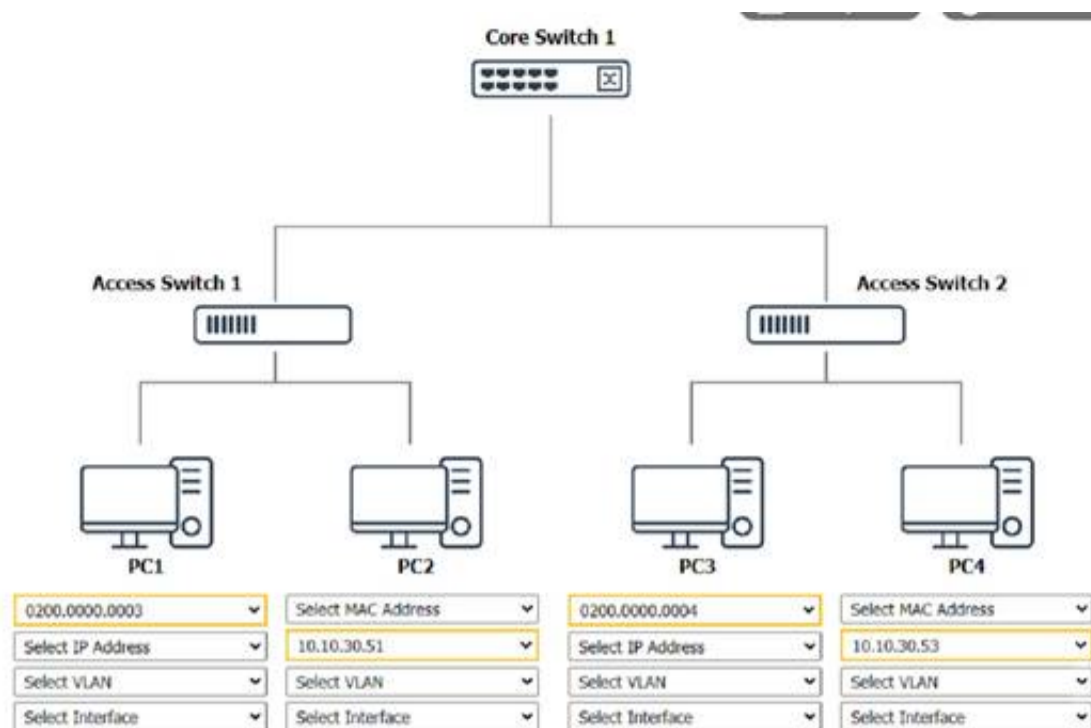
SIMULATION - (Topic 3)

A network technician was recently onboarded to a company. A manager has

tasked the technician with documenting the network and has provided the technician With partial information from previous documentation.

Instructions:

Click on each switch to perform a network discovery by entering commands into the terminal. Fill in the missing information using drop-down menus provided.

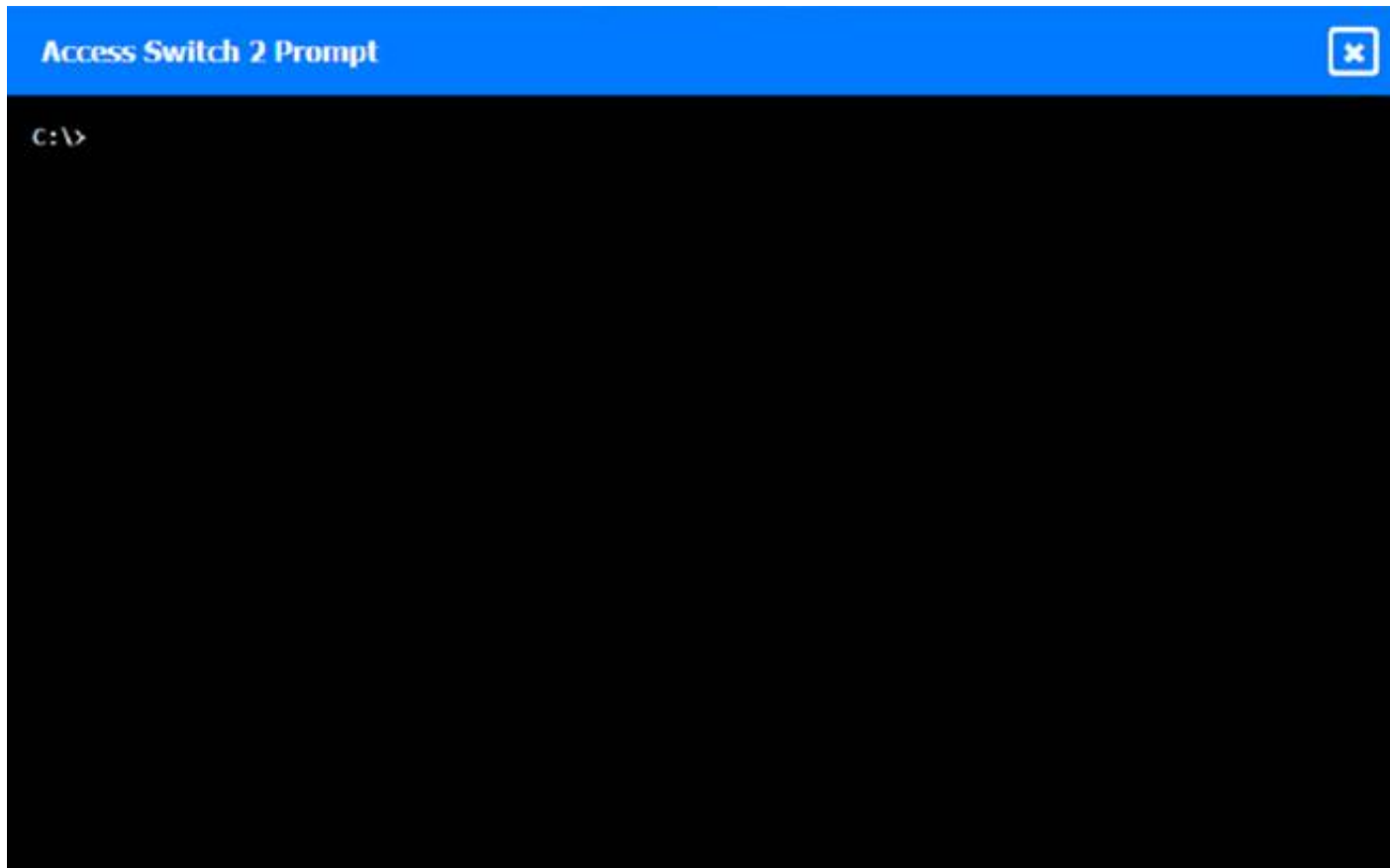


### Core Switch 1 Prompt

```
C:\> nmap
% Invalid input detected.
C:\> netdiscover
% Invalid input detected.
C:\> |
```

### Access Switch 1 Prompt

```
C:\> nmap
% Invalid input detected.
C:\>
```



- A. Mastered
- B. Not Mastered

**Answer:** A

**Explanation:**

(Note: Ips will be change on each simulation task, so we have given example answer for the understanding)

To perform a network discovery by entering commands into the terminal, you can use the following steps:

? Click on each switch to open its terminal window.

? Enter the command show ip interface brief to display the IP addresses and statuses of the switch interfaces.

? Enter the command show vlan brief to display the VLAN configurations and assignments of the switch interfaces.

? Enter the command show cdp neighbors to display the information about the neighboring devices that are connected to the switch.

? Fill in the missing information in the diagram using the drop-down menus provided. Here is an example of how to fill in the missing information for Core Switch 1:

? The IP address of Core Switch 1 is 192.168.1.1.

? The VLAN configuration of Core Switch 1 is VLAN 1: 192.168.1.0/24, VLAN 2: 192.168.2.0/24, VLAN 3: 192.168.3.0/24.

? The neighboring devices of Core Switch 1 are Access Switch 1 and Access Switch 2.

? The interfaces that connect Core Switch 1 to Access Switch 1 are GigabitEthernet0/1 and GigabitEthernet0/2.

? The interfaces that connect Core Switch 1 to Access Switch 2 are GigabitEthernet0/3 and GigabitEthernet0/4.

You can use the same steps to fill in the missing information for Access Switch 1 and Access Switch 2.

**NEW QUESTION 150**

- (Topic 3)

Which of the following should a network administrator configure when adding OT devices to an organization's architecture?

- A. Honeynet
- B. Data-at-rest encryption
- C. Time-based authentication
- D. Network segmentation

**Answer:** D

**Explanation:**

Network segmentation is the process of dividing a network into smaller subnets or segments, each with its own security policies and access controls. This can help isolate OT devices from IT devices, guest networks, and other potential threats, as well as improve network performance and efficiency. Network segmentation is a recommended security practice for OT environments, as it can limit the attack surface, contain the damage of a breach, and comply with regulatory standards.

<https://sectrio.com/complete-guide-to-ot-network-segmentation/>

**NEW QUESTION 151**

- (Topic 3)

After installing a new wireless access point, an engineer tests the device and sees that it is not performing at the rated speeds. Which of the following should the engineer do to troubleshoot the issue? (Select two).

- A. Ensure a bottleneck is not coming from other devices on the network.
- B. Install the latest firmware for the device.
- C. Create a new VLAN for the access point.
- D. Make sure the SSID is not longer than 16 characters.
- E. Configure the AP in autonomous mode.
- F. Install a wireless LAN controller.

**Answer:** AB

**Explanation:**

One possible cause of poor wireless performance is a bottleneck in the network, which means that other devices or applications are consuming too much bandwidth or resources and limiting the speed of the wireless access point. To troubleshoot this issue, the engineer should ensure that there is no congestion or

interference from other devices on the network, such as wired clients, servers, routers, switches, or other wireless access points. The engineer can use tools such as network analyzers, bandwidth monitors, or ping tests to check the network traffic and latency<sup>12</sup>.

Another possible cause of poor wireless performance is outdated firmware on the device, which may contain bugs or vulnerabilities that affect the functionality or security of the wireless access point. To troubleshoot this issue, the engineer should install the latest firmware for the device from the manufacturer's website or support portal. The engineer should follow the instructions carefully and backup the configuration before updating the firmware. The engineer can also check the release notes or changelog of the firmware to see if there are any improvements or fixes related to the wireless performance<sup>3</sup>.

The other options are not relevant to troubleshooting poor wireless performance. Creating a new VLAN for the access point may help with network segmentation or security, but it will not improve the speed of the wireless connection. Making sure the SSID is not longer than 16 characters may help with compatibility or readability, but it will not affect the wireless performance. Configuring the AP in autonomous mode may give more control or flexibility to the engineer, but it will not enhance the wireless speed. Installing a wireless LAN controller may help with managing multiple access points or deploying advanced features, but it will not increase the wireless performance.

#### NEW QUESTION 152

- (Topic 3)

A user reports that a new VoIP phone works properly, but the computer that is connected to the phone cannot access any network resources. Which of the following MOST likely needs to be configured correctly to provide network connectivity to the computer?

- A. Port duplex settings
- B. Port aggregation
- C. ARP settings
- D. VLAN tags
- E. MDIX settings

**Answer:** A

#### NEW QUESTION 153

- (Topic 3)

Which of the following documents dictates the uptimes that were agreed upon by the involved parties?

- A. MOU
- B. BYOD
- C. SLA
- D. NDA

**Answer:** C

#### Explanation:

An SLA (Service Level Agreement) is a document that defines the expected level of service and performance guaranteed by a service provider to a customer. It usually specifies metrics such as uptime, availability, reliability, response time, and compensation or penalties for not meeting the agreed standards. An SLA is a way of ensuring that both parties are clear about their roles and responsibilities, and that the customer receives the quality of service they paid for.

#### NEW QUESTION 155

- (Topic 3)

A company is designing a SAN and would like to use STP as its medium for communication. Which of the following protocols would BEST suit the company's needs?

- A. SFTP
- B. Fibre Channel
- C. iSCSI
- D. FTP

**Answer:** B

#### Explanation:

A SAN also employs a series of protocols enabling software to communicate or prepare data for storage. The most common protocol is the Fibre Channel Protocol (FCP), which maps SCSI commands over FC technology. The iSCSI SANs will employ an iSCSI protocol that maps SCSI commands over TCP/IP. STP (Spanning Tree Protocol) is a protocol used to prevent loops in Ethernet networks, and it is not a medium for communication in a storage area network (SAN). However, Fibre Channel is a protocol that is specifically designed for high-speed data transfer in SAN environments. It is a dedicated channel technology that provides high throughput and low latency, making it ideal for SANs. Therefore, Fibre Channel would be the best protocol for the company to use for its SAN. SFTP (Secure File Transfer Protocol), iSCSI (Internet Small Computer System Interface), and FTP (File Transfer Protocol) are protocols used for transferring files over a network and are not suitable for use in a SAN environment.

#### NEW QUESTION 157

- (Topic 3)

Which of the following should be used to manage outside cables that need to be routed to various multimode uplinks?

- A. Fiber distribution panel
- B. 110 punchdown block
- C. PDU
- D. TIA/EIA-568A patch bay
- E. Cat 6 patch panel

**Answer:** A

#### Explanation:

A fiber distribution panel is a device that provides a central location for connecting and managing fiber optic cables and optical modules. It can support various types and speeds of fiber optic links, including multimode uplinks. Therefore, a fiber distribution panel should be used to manage outside cables that need to be routed to various multimode uplinks.

#### NEW QUESTION 161

- (Topic 3)

A network technician is attempting to increase throughput by configuring link port aggregation between a Gigabit Ethernet distribution switch and a Fast Ethernet access switch. Which of the following is the BEST choice concerning speed and duplex for all interfaces that are participating in the link aggregation?

- A. Half duplex and 1GB speed
- B. Full duplex and 1GB speed
- C. Half duplex and 100MB speed
- D. Full duplex and 100MB speed

**Answer:** B

#### Explanation:

The best choice for configuring link port aggregation between a Gigabit Ethernet distribution switch and a Fast Ethernet access switch is to use full duplex and 1GB speed for all interfaces that are participating in the link aggregation. This will allow for maximum throughput, as the full duplex connection will enable simultaneous sending and receiving of data, and the 1GB speed will ensure that the data is transferred quickly. According to the CompTIA Network+ Study Guide, "Full-duplex Ethernet allows the network adapter to transmit and receive data simultaneously, which can result in double the bandwidth of half-duplex Ethernet." Additionally, the official text states, "Ethernet and Fast Ethernet use different speeds for data transmission, with Ethernet being 1,000 megabits (1 gigabit) per second and Fast Ethernet being 100 megabits per second."

#### NEW QUESTION 163

- (Topic 3)

A network technician recently installed 35 additional workstations. After installation, some users are unable to access network resources. Many of the original workstations that are experiencing the network access issue were offline when the new workstations were turned on. Which of the following is the MOST likely cause of this issue?

- A. Incorrect VLAN setting
- B. Insufficient DHCP scope
- C. Improper NIC setting
- D. Duplicate IP address

**Answer:** B

#### NEW QUESTION 168

- (Topic 3)

To reduce costs and increase mobility, a Chief Technology Officer (CTO) wants to adopt cloud services for the organization and its affiliates. To reduce the impact for users, the CTO wants key services to run from the on-site data center and enterprise services to run in the cloud. Which of the following deployment models is the best choice for the organization?

- A. Public
- B. Hybrid
- C. SaaS
- D. Private

**Answer:** B

#### Explanation:

A hybrid cloud deployment model is a combination of on-premise and cloud solutions, where some resources are hosted in-house and some are hosted by a cloud provider. A hybrid cloud model can offer the benefits of both public and private clouds, such as scalability, cost-efficiency, security, and control. A hybrid cloud model can also reduce the impact for users, as they can access the key services from the on-site data center and the enterprise services from the cloud.

#### NEW QUESTION 172

- (Topic 3)

Which of the following DHCP settings would be used to ensure a device gets the same IP address each time it is connected to the network?

- A. Scope options
- B. Reservation
- C. Exclusion
- D. Relay
- E. Pool

**Answer:** A

#### NEW QUESTION 175

- (Topic 3)

The lack of a formal process to grant network permissions to different profiles of employees and contractors is leading to an increasing number of security incidents. Non-uniform and overly permissive network accesses are being granted. Which of the following would be the MOST appropriate method to improve the security of the environment?

- A. Change the default permissions to implicit deny
- B. Configure uniform ACLs to employees and NAC for contractors.
- C. Deploy an RDP server to centralize the access to the network
- D. Implement role-based access control

**Answer:** D

#### Explanation:

The most appropriate method to improve the security of the environment would be to implement role-based access control (RBAC). With RBAC, users are granted access to the network based on their role within the organization. This allows for more granular access control, as different roles may require different levels of

access. Additionally, this ensures that users only have access to the resources they need and no more. This helps to reduce the risk of unauthorized access or misuse of the network. References and further information can be found in the CompTIA Network+ Study Manual, Chapter 8, Access Control.

RBAC is a method of restricting network access based on the roles of individual users within the organization. With RBAC, users are granted access only to the resources they need to perform their specific job functions. This approach reduces the risk of unauthorized access, provides greater visibility into user activity, and simplifies network management. Changing the default permissions to implicit deny may improve security, but it could also cause issues for legitimate users who require access to specific resources. Configuring uniform ACLs and NAC for contractors is a step in the right direction, but it may not be enough to address the overall lack of a formal process for granting network permissions. Deploying an RDP server to centralize access to the network is not a viable solution, as it would not address the root cause of the security incidents.

Therefore, the most appropriate option is to implement role-based access control. Reference: CompTIA Network+ Study Guide, Fourth Edition, Chapter 7, section 7.4.

#### NEW QUESTION 177

- (Topic 3)

A network technician is having issues connecting an IoT sensor to the internet. The WLAN settings were enabled via a custom command line, and a proper IP address assignment was received on the wireless interface. However, when trying to connect to the internet, only HTTP redirections are being received when data is requested. Which of the following will point to the root cause of the issue?

- A. Verifying if an encryption protocol mismatch exists.
- B. Verifying if a captive portal is active for the WLAN.
- C. Verifying the minimum RSSI for operation in the device's documentation.
- D. Verifying EIRP power settings on the access point.

**Answer:** C

#### Explanation:

A captive portal is a web page that is displayed to a user before they can access the internet or other network resources. This is often used in public or guest networks to present users with a login or terms and conditions page before they can access the internet. If a captive portal is active on the WLAN, it would explain why the IoT sensor is only receiving HTTP redirections when trying to connect to the internet.

#### NEW QUESTION 181

- (Topic 3)

A firewall administrator observes log entries of traffic being allowed to a web server on port 80 and port 443. The policy for this server is to only allow traffic on port 443. The firewall administrator needs to investigate how this change occurred to prevent a recurrence. Which of the following should the firewall administrator do next?

- A. Consult the firewall audit logs.
- B. Change the policy to allow port 80.
- C. Remove the server object from the firewall policy.
- D. Check the network baseline.

**Answer:** A

#### Explanation:

Firewall audit logs are records of the changes made to the firewall configuration, policies, and rules. They can help the firewall administrator to track who, when, and what changes were made to the firewall, and identify any unauthorized or erroneous modifications that could cause security issues or network outages. By consulting the firewall audit logs, the firewall administrator can investigate how the change that allowed traffic on port 80 to the web server occurred, and prevent it from happening again.

#### NEW QUESTION 183

- (Topic 3)

Which of the following topologies requires the MOST connections when designing a network?

- A. Mesh
- B. Star
- C. Bus
- D. Ring

**Answer:** A

#### NEW QUESTION 185

- (Topic 3)

A network administrator wants to test the throughput of a new metro Ethernet circuit to verify that its performance matches the requirements specified in the SLA. Which of the following would BEST help measure the throughput?

- A. iPerf
- B. Ping
- C. NetFlow
- D. Netstat

**Answer:** A

#### NEW QUESTION 186

- (Topic 3)

An employee working in a warehouse facility is experiencing interruptions in mobile applications while walking around the facility. According to a recent site survey, the WLAN comprises autonomous APs that are directly connected to the internet, providing adequate signal coverage. Which of the following is the BEST solution to improve network stability?

- A. Implement client roaming using an extended service deployment employing a wireless controller.

- B. Remove omnidirectional antennas and adopt a directional bridge.
- C. Ensure all APs of the warehouse support MIMO and Wi-Fi 4.
- D. Verify that the level of EIRP power settings is set to the maximum permitted by regulations.

**Answer:** A

**Explanation:**

Client roaming refers to the ability of a wireless device to seamlessly connect to a different access point (AP) as the user moves around the facility. This can help to improve network stability and reduce interruptions in mobile applications. An extended service deployment is a type of wireless network configuration that uses multiple APs to cover a large area, such as a warehouse facility. By using a wireless controller to manage the APs, the network can be better optimized for client roaming, which can improve network stability.

"Roaming With multiple WAPs in an ESS, clients will connect to whichever WAP has the strongest signal. As clients move through the space covered by the broadcast area, they will change WAP connections seamlessly, a process called roaming."

**NEW QUESTION 190**

- (Topic 3)

A technician was cleaning a storage closet and found a box of transceivers labeled 8Gbps. Which of the following protocols uses those transceivers?

- A. Coaxial over Ethernet
- B. Internet Small Computer Systems Interface
- C. Fibre Channel
- D. Gigabit interface converter

**Answer:** C

**Explanation:**

The transceivers labeled 8Gbps are likely to be used with the Fibre Channel protocol. Fibre Channel is a high-speed networking technology that is primarily used to connect storage devices to servers in storage area networks (SANs). It is capable of transmitting data at speeds of up to 8 Gbps (gigabits per second), and uses specialized transceivers to transmit and receive data over fiber optic cables.

Coaxial over Ethernet (CoE) is a networking technology that uses coaxial cables to transmit data, and is not related to the transceivers in question. Internet Small Computer Systems Interface (iSCSI) is a protocol that allows devices to communicate over a network using the SCSI protocol, and does not typically use specialized transceivers. Gigabit interface converter (GBIC) is a type of transceiver used to transmit and receive data over fiber optic cables, but it is not capable of transmitting data at 8 Gbps.

**NEW QUESTION 193**

- (Topic 3)

A network administrator is decommissioning a server. Which of the following will the network administrator MOST likely consult?

- A. Onboarding and off boarding policies
- B. Business continuity plan
- C. Password requirements
- D. Change management documentation

**Answer:** D

**NEW QUESTION 196**

- (Topic 3)

A company wants to invest in new hardware for the core network infrastructure. The management team requires that the infrastructure be capable of being repaired in less than 60 minutes if any major part fails. Which of the following metrics is MOST likely associated with this requirement?

- A. RPO
- B. MTTR
- C. FHRP
- D. MTBF

**Answer:** B

**Explanation:**

MTTR is directly related to how quickly a system can be repaired if any major part fails. The management team requires that the infrastructure be capable of being repaired in less than 60 minutes, which means they have a low MTTR requirement.

MTTR stands for Mean Time To Repair and is a metric used to measure the average amount of time it takes to repair a failed component or system. In this case, the requirement is for the infrastructure to be capable of being repaired in less than 60 minutes if any major part fails, which means the MTTR should be less than 60 minutes.

**NEW QUESTION 197**

- (Topic 3)

Which of the following layers of the OSI model has new protocols activated when a user moves from a wireless to a wired connection?

- A. Data link
- B. Network
- C. Transport
- D. Session

**Answer:** A

**Explanation:**

"The Data Link layer also determines how data is placed on the wire by using an access method. The wired access method, carrier-sense multiple access with collision detection (CSMA/CD), was once used by all wired Ethernet networks, but is automatically disabled on switched full-duplex links, which have been the norm for decades. Carrier-sense multiple access with collision avoidance (CSMA/CA) is used by wireless networks, in a similar fashion."

### NEW QUESTION 202

- (Topic 3)

An administrator is setting up a multicast server on a network, but the firewall seems to be dropping the traffic. After logging in to the device, the administrator sees the following entries:

Rule	Action	Source	Destination	Port
1	Deny	Any	172.30.10.50	Any
2	Deny	Any	232.1.4.9	Any
3	Deny	Any	242.9.15.4	Any
4	Deny	Any	175.50.10.10	Any

Which of the following firewall rules is MOST likely causing the issue?

- A. Rule 1
- B. Rule 2
- C. Rule 3
- D. Rule 4

**Answer:** A

### NEW QUESTION 207

- (Topic 3)

A technician is setting up DNS records on local servers for the company's cloud DNS to enable access by hostname. Which of the following records should be used?

- A. A
- B. MX
- C. CNAME
- D. NS

**Answer:** A

#### Explanation:

An A record, also known as an address record, is a type of DNS record that maps a hostname to an IPv4 address. An A record is used to resolve a domain name to an IP address, so that clients can connect to the server or service by using the domain name instead of the IP address. For example, an A record can map [www.example.com](http://www.example.com) to 192.0.2.1.

An A record is the most common type of DNS record for cloud DNS, as it allows the company to use a custom domain name for their cloud services, such as web hosting, email, or storage. An A record can also be used to create subdomains, such as [blog.example.com](http://blog.example.com) or [mail.example.com](http://mail.example.com), that point to different IP addresses or servers. The other options are not correct because they are not the best type of DNS record for cloud DNS. They are:

? MX. MX stands for mail exchange, and it is a type of DNS record that specifies the

mail servers that are responsible for receiving and delivering email messages for a domain name. MX records are used for email services, but they are not sufficient for cloud DNS, as they do not map a hostname to an IP address.

? CNAME. CNAME stands for canonical name, and it is a type of DNS record that specifies an alias name for another domain name. CNAME records are used to create multiple names for the same IP address or server, such as [www.example.com](http://www.example.com) and [example.com](http://example.com). CNAME records are useful for cloud DNS, but they are not the best type, as they depend on another A record to resolve the IP address.

? NS. NS stands for name server, and it is a type of DNS record that delegates a DNS zone to an authoritative server. NS records are used to specify which DNS servers are responsible for answering queries for a domain name or a subdomain. NS records are essential for cloud DNS, but they are not the best type, as they do not map a hostname to an IP address.

References1: DNS records overview | Google Cloud2: Network+ (Plus) Certification | CompTIA IT Certifications3: CloudDNS: What is a DNS record?

### NEW QUESTION 212

- (Topic 3)

Which of the following types of data center architectures will MOST likely be used in a large SDN and can be extended beyond the data center?

- A. iSCSI
- B. FCoE
- C. Three-tiered network
- D. Spine and leaf
- E. Top-of-rack switching

**Answer:** D

#### Explanation:

The type of data center architecture that will most likely be used in a large SDN and can be extended beyond the data center is spine and leaf. Spine and leaf is a network topology that consists of two layers of switches: spine switches and leaf switches. Spine switches are interconnected to each other and form the core of the network, while leaf switches are connected to each spine switch and form the access layer of the network. Spine and leaf topology provides high scalability, performance, and flexibility for data center networks, especially for SDN (Software Defined Networking) environments that require dynamic traffic flows and virtualization. References: CompTIA Network+ N10-008 Certification Study Guide, page 16; The Official CompTIA Network+ Student Guide (Exam N10-008), page 1-9.

### NEW QUESTION 213

- (Topic 3)

An online gaming company needs a cloud solution that will allow for more virtual resources to be deployed when tournaments are held. The number of users who access the service increases during tournaments. The company also needs the resources to return to baseline levels once the resources are not needed in order to reduce cost. Which of the following cloud concepts would provide the best solution?

- A. Scalability

- B. Hybrid
- C. Multitenancy
- D. Elasticity

**Answer:** D

**Explanation:**

Elasticity is the ability of a cloud service to automatically adjust the amount of resources allocated to meet the changing demand of the users. Elasticity enables a cloud service to scale up or down resources quickly and efficiently, without requiring manual intervention or planning. Elasticity is ideal for scenarios where the demand is unpredictable, dynamic, or seasonal, such as online gaming tournaments. By using elasticity, the online gaming company can ensure optimal performance and user experience during peak times, while also saving costs and avoiding overprovisioning during off-peak times.

The other options are not correct because they do not address the specific needs of the online gaming company. They are:

- Scalability is the ability of a cloud service to handle an increase or decrease in the demand of the users by adding or removing resources. Scalability is similar to elasticity, but it is more manual, planned, and predictive, while elasticity is automatic, prompt, and reactive. Scalability is suitable for scenarios where the demand is steady, predictable, or gradual, such as a growing business or a long-term project.
- Hybrid is a type of cloud model that combines two or more clouds, such as on-premises private, hosted private, or public, that can be centrally managed to enable interoperability for various use cases. Hybrid cloud can offer benefits such as flexibility, security, and cost- efficiency, but it does not directly address the need for dynamic resource allocation for the online gaming company.
- Multitenancy is a feature of cloud services that allows multiple users or customers to share the same physical or virtual resources, such as servers, databases, or applications, while maintaining isolation and privacy. Multitenancy can offer benefits such as efficiency, scalability, and cost-effectiveness, but it does not directly address the need for dynamic resource allocation for the online gaming company.

**References**

1: Understand cloud concepts | Microsoft Press Store 2: What Is Hybrid Cloud? - Cisco

3: Difference between Elasticity and Scalability in Cloud Computing 4: Scalability and Elasticity in Cloud Computing - GeeksforGeeks

**NEW QUESTION 214**

- (Topic 3)

All packets arriving at an interface need to be fully analyzed. Which of the following features should be used to enable monitoring of the packets?

- A. LACP
- B. Flow control
- C. Port mirroring
- D. NetFlow exporter

**Answer:** D

**Explanation:**

Port mirroring is a feature that can be used to enable monitoring of all packets arriving at an interface. This feature is used to direct a copy of all traffic passing through the switch to a monitoring device, such as a network analyzer. This allows the switch to be monitored with the network analyzer in order to identify any malicious or suspicious activity. Additionally, port mirroring can be used to troubleshoot network issues, such as latency or poor performance.

**NEW QUESTION 218**

- (Topic 3)

Which of the following disaster recovery metrics describes the average length of time a piece of equipment can be expected to operate normally?

- A. RPO
- B. RTO
- C. MTTR
- D. MTBF

**Answer:** D

**Explanation:**

MTBF is the disaster recovery metric that describes the average length of time a piece of equipment can be expected to operate normally. MTBF stands for mean time between failures, which is a measure of the reliability and availability of a device or system. MTBF is calculated by dividing the total operating time by the number of failures that occurred during that time. MTBF indicates how often a device or system fails and how long it can run without interruption. A higher MTBF means a lower failure rate and a longer operational life span. References: [CompTIA Network+ Certification Exam Objectives], What Is Mean Time Between Failures (MTBF)? | Definition & Examples | Forcepoint

**NEW QUESTION 222**

- (Topic 3)

A customer calls the help desk to report that users are unable to access any network resources\_ The issue started earlier in the day when an employee rearranged the wiring closet A technician goes to the site but does not observe any obvious damage. The statistics output on the switch indicates high CPU-J usage, and all the lights on the switch are blinking rapidly in unison\_ Which of the following is the most likely explanation for these symptoms?

- A. The switch was rebooted and set to run in safe mode.
- B. The line between the switch and the upstream router was removed
- C. A cable was looped and created a broadcast storm.
- D. A Cat 6 cable from the modem to the router was replaced with Cat 5e.

**Answer:** C

**Explanation:**

A cable was looped and created a broadcast storm is the most likely explanation for the symptoms of high CPU usage and blinking lights on the switch. A cable loop is a situation where a switch port is connected to another switch port on the same switch or another switch, creating a circular path for network traffic. A cable loop can cause a broadcast storm, which is a network phenomenon where a large number of broadcast or multicast packets are flooded on the network, consuming bandwidth and CPU resources. A broadcast storm can cause network congestion, performance degradation, or failure. A cable loop can occur when an employee rearranges the wiring closet without proper documentation or verification. A cable loop can be prevented or detected by using Spanning Tree Protocol (STP) or loop detection features on the switch. References: [CompTIA Network+ Certification Exam Objectives], What Is a Broadcast Storm? | Definition & Examples | Forcepoint

#### NEW QUESTION 224

- (Topic 3)

To comply with an industry regulation, all communication destined to a secure server should be logged and archived on a storage device. Which of the following can be configured to fulfill this requirement?

- A. QoS traffic classification
- B. Port mirroring
- C. Flow control
- D. Link Aggregation Control Protocol

**Answer:** B

#### NEW QUESTION 227

- (Topic 3)

Which of the following connectors and terminations are required to make a Cat 6 cable that connects from a PC to a non-capable MDIX switch? (Select TWO).

- A. T1A-568-A - TIA-568-B
- B. TIA-568-B - TIA-568-B
- C. RJ11
- D. RJ45
- E. F-type

**Answer:** AD

#### NEW QUESTION 231

- (Topic 3)

After upgrading to a SOHO router that supports Wi-Fi 6, the user determines throughput has not increased. Which of the following is the MOST likely cause of the issue?

- A. The wireless router is using an incorrect antenna type.
- B. The user's workstation does not support 802.11 ax.
- C. The encryption protocol is mismatched
- D. The network is experiencing interference.

**Answer:** B

#### Explanation:

The user's workstation does not support 802.11 ax, which is the technical name for Wi-Fi 6. Wi-Fi 6 is a new wireless standard that offers faster speeds, higher capacity, and lower latency than previous standards. However, to take advantage of these benefits, both the router and the workstation need to support Wi-Fi 6. If the workstation only supports an older standard, such as 802.11 ac or Wi-Fi 5, then the throughput will not increase even if the router supports Wi-Fi 6. References: [CompTIA Network+ Certification Exam Objectives], What is Wi-Fi 6? Here's what you need to know | PCWorld

#### NEW QUESTION 234

- (Topic 3)

A network administrator requires redundant routers on the network, but only one default gateway is configurable on a workstation. Which of the following will allow for redundant routers with a single IP address?

- A. EIGRP
- B. VRRP
- C. MPLS
- D. STP

**Answer:** B

#### Explanation:

Virtual Router Redundancy Protocol (VRRP) is a protocol that allows for redundant routers on the network with a single IP address. VRRP works by creating a virtual router that consists of one master router and one or more backup routers. The virtual router has its own IP address and MAC address that are shared among the routers in the group. The master router responds to traffic sent to the virtual router's IP address, while the backup routers monitor the master router's status. If the master router fails, one of the backup routers takes over as the new master router and continues to respond to traffic. This way, VRRP provides high availability and fault tolerance for the network. References: <https://www.comptia.org/training/books/network-n10-008-study-guide> (page 230)

#### NEW QUESTION 236

- (Topic 3)

A network administrator is setting up a web-based application for a company. The application needs to be continually accessible to all end users. Which of the following would best ensure this need is fulfilled?

- A. NIC teaming
- B. Cold site
- C. Snapshots
- D. High availability

**Answer:** D

#### Explanation:

High availability is a quality of a system or component that assures a high level of operational performance for a given period of time. High availability means that an IT system, component, or application can operate at a high level, continuously, without intervention, for a given time period. High-availability infrastructure is configured to deliver quality performance and handle different loads and failures with minimal or zero downtime. High availability is important for web-based

applications, as it ensures that the application is always accessible to the end users, even in the event of a server or component failure. High availability can be achieved by eliminating single points of failure, implementing redundancy, load balancing, and failover mechanisms.

#### NEW QUESTION 241

- (Topic 3)

A network technician is troubleshooting an issue that involves connecting to a server via SSH. The server has one network interface that does not support subinterfaces. The technician runs a command on the server and receives the following output:

```

Proto      Local address      Foreign address    State
TCP        0.0.0.0:22         0.0.0.0:0         LISTENING
TCP        0.0.0.0:23         0.0.0.0:0         LISTENING
TCP        0.0.0.0:443        0.0.0.0:0         LISTENING
TCP        10.10.10.15:22     10.10.10.42:21231 ESTABLISHED

```

On the host, the technician runs another command and receives the following:

```

Destination      Gateway            Genmask           Flags    Iface
default          31.242.12.9       0.0.0.0           UG       eth0
192.168.1.0      0.0.0.0           255.255.255.0    UG       eth1

```

Which of the following best explains the issue?

- A. A firewall is blocking access to the server.
- B. The server is plugged into a trunk port.
- C. The host does not have a route to the server.
- D. The server is not running the SSH daemon.

**Answer: C**

#### NEW QUESTION 243

- (Topic 3)

A network administrator is looking at switch features and is unsure whether to purchase a model with PoE. Which of the following devices that commonly utilize PoE should the administrator consider? (Select TWO)

- A. VoIP phones
- B. Cameras
- C. Printers
- D. Cable modems
- E. Laptops
- F. UPSs

**Answer: AB**

#### Explanation:

Power over Ethernet (PoE) is a technology that allows network-connected devices to receive power over the same Ethernet cables that are used for data transfer. PoE is commonly used to power devices such as VoIP phones and cameras, making it an ideal choice for network administrators looking for a cost-effective solution. PoE is not typically used for other devices such as printers, cable modems, laptops, and UPSs.

#### NEW QUESTION 245

- (Topic 3)

A network engineer is installing hardware in a newly renovated data center. Major concerns that were addressed during the renovation included air circulation, building power redundancy, and the need for continuous monitoring. The network engineer is creating alerts based on the following operation specifications:

AC input voltage	100 to 240VAC
AC maximum input current	<2.7A at 100V
Redundant power supply	Yes
Operating temperature	32–104°F (0–40°C)
Storage temperature	-4–149°F (-20–65°C)
Operating humidity	10–85%
Storage humidity	5–95%

Which of the following should the network engineer configure?

- A. Environmental monitoring alerts for humidity greater than 95%
- B. SIEM to parse syslog events for a failed power supply
- C. SNMP traps to report when the chassis temperature exceeds 95°F (3500)
- D. UPS monitoring to report when input voltage drops below 220VAC

**Answer: C**

#### Explanation:

The alert that the network engineer should configure based on the operation specifications is SNMP traps to report when the chassis temperature exceeds 95°F.

(35°C). SNMP (Simple Network Management Protocol) is a protocol that allows network devices to communicate their status and performance information to a central management system, called an SNMP manager. SNMP traps are messages that are sent by network devices to notify the SNMP manager of an event or condition that requires attention, such as an error, a failure, or a threshold violation. In this case, the network engineer should configure SNMP traps on the network devices to send an alert when their chassis temperature exceeds 95°F (35°C), which is the maximum operating temperature specified in the table. This alert would help the network engineer monitor and troubleshoot any overheating issues that could affect the network performance or availability. References: CompTIA Network+ N10-008 Certification Study Guide, page 228; The Official CompTIA Network+ Student Guide (Exam N10-008), page 8-11.

#### NEW QUESTION 249

- (Topic 3)

During a recent security audit, a contracted penetration tester discovered the organization uses a number of insecure protocols. Which of the following ports should be disallowed so only encrypted protocols are allowed? (Select TWO).

- A. 22
- B. 23
- C. 69
- D. 443
- E. 587
- F. 8080

**Answer:** BC

#### NEW QUESTION 254

- (Topic 3)

A network technician is troubleshooting a connection to a web server. The Technician Is unable to ping the server but is able to verify connectivity to the web service using Tenet. Which of the following protocols is being blocked by me firewall?

- A. UDP
- B. ARP
- C. ICMP
- D. TCP

**Answer:** C

#### Explanation:

ICMP (Internet Control Message Protocol) is a protocol that is used to send error and control messages between network devices, such as ping requests and replies. ICMP is being blocked by the firewall, which prevents the network technician from pinging the web server. TCP (Transmission Control Protocol) is a protocol that provides reliable and ordered delivery of data between network devices, such as web service requests and responses using HTTP (Hypertext Transfer Protocol). TCP is not being blocked by the firewall, which allows the network technician to verify connectivity to the web service using Telnet. UDP (User Datagram Protocol) is a protocol that provides fast and efficient delivery of data between network devices, but does not guarantee reliability or order. UDP is used for applications such as streaming media or online gaming. ARP (Address Resolution Protocol) is a protocol that resolves IP addresses to MAC addresses on a local network. References: [CompTIA Network+ Certification Exam Objectives], Domain 2.0 Networking Concepts, Objective 2.1: Compare and contrast OSI and TCP/IP models, Subobjective: TCP/IP model layers (Application/Transport/Internet/Network Interface)

#### NEW QUESTION 257

- (Topic 3)

A network administrator wants to know which systems on the network are at risk of a known vulnerability. Which of the following should the administrator reference?

- A. SLA
- B. Patch management policy
- C. NDA
- D. Site survey report
- E. CVE

**Answer:** E

#### Explanation:

A Common Vulnerabilities and Exposures (CVE) is a publicly available database of known security vulnerabilities and exposures that affect various software and hardware products. A CVE entry provides a standardized identifier, a brief description, and references to related sources of information for each vulnerability or exposure. A network administrator can reference the CVE database to check if any of the systems on the network are affected by a known vulnerability, and if so, what are the potential impacts and mitigations.

A Service Level Agreement (SLA) is a contract between a service provider and a customer that defines the expected level and quality of service, such as availability, performance, and security. An SLA does not provide information on specific vulnerabilities or exposures affecting the systems or services.

A Patch Management Policy is a set of rules and procedures that govern how patches are applied to systems and software to fix bugs, improve functionality, or address security issues. A patch management policy can help prevent or reduce the risk of vulnerabilities or exposures, but it does not provide information on specific vulnerabilities or exposures affecting the systems or software.

A Non-Disclosure Agreement (NDA) is a legal contract between two or more parties that prohibits the disclosure of confidential or proprietary information to unauthorized parties. An NDA does not provide information on specific vulnerabilities or exposures affecting the systems or information.

A Site Survey Report is a document that summarizes the results of a physical inspection and assessment of a network site, such as the layout, infrastructure, equipment, and environmental conditions. A site survey report can help identify and resolve potential network issues, such as interference, signal strength, or coverage, but it does not provide information on specific vulnerabilities or exposures affecting the network devices or software.

References

What is CVE?

What is a Service Level Agreement (SLA)? Guide to Enterprise Patch Management Planning

NDA, MSA, SOW and SLA. Confidentiality agreements when you outsource QA Site Survey Report

#### NEW QUESTION 262

- (Topic 3)

Which of the following is a requirement when certifying a network cabling as Cat 7?

- A. Ensure the patch panel is certified for the same category.
- B. Limit 10Gb transmissions to 180ft (55m).
- C. Use F-type connectors on the network terminations.
- D. Ensure the termination standard is TIA/EIA-568-A.

**Answer:** D

**Explanation:**

Category 7 (Cat 7) is a cabling standard that supports 10GBASE-T Ethernet connections up to 100 meters (328 feet). In order for a cabling system to be certified as Cat 7, all components, including the patch panel, must meet the TIA/EIA-568-A standard. This standard requires the use of shielded cables with F-type connectors for the network terminations. Reference: CompTIA Network+ Study Manual, 8th Edition, page 158.

**NEW QUESTION 264**

- (Topic 3)

A network deployment engineer is deploying a new single-channel 10G optical connection. Which of the following optics should the engineer MOST likely use to satisfy this requirement?

- A. QSFP
- B. QSFP+
- C. SFP
- D. SFP+

**Answer:** D

**Explanation:**

SFP+ is a type of optical transceiver that supports 10G single-channel transmission over fiber optic cables. SFP+ stands for small form-factor pluggable plus, and it is compatible with SFP slots on switches and routers.

**NEW QUESTION 268**

- (Topic 3)

A security vendor needs to add a note to the DNS to validate the ownership of a company domain before services begin. Which of the following records did the security company MOST likely ask the company to configure?

- A. TXT
- B. AAAA
- C. CNAME
- D. SRV

**Answer:** A

**Explanation:**

TXT stands for Text and is a type of DNS record that can store arbitrary text data associated with a domain name. TXT records can be used for various purposes, such as verifying the ownership of a domain, providing information about a domain, or implementing security mechanisms such as SPF (Sender Policy Framework) or DKIM (DomainKeys Identified Mail). In this scenario, the security company most likely asked the company to configure a TXT record with a specific value that can prove the ownership of the domain. AAAA stands for IPv6 Address and is a type of DNS record that maps a domain name to an IPv6 address. CNAME stands for Canonical Name and is a type of DNS record that maps an alias name to another name. SRV stands for Service and is a type of DNS record that specifies the location of a service on a network.

References: CompTIA Network+ Certification Exam Objectives Version 7.0 (N10-007), Objective 1.8: Explain the purposes and use cases for advanced networking devices.

**NEW QUESTION 271**

- (Topic 3)

A technician is consolidating a topology with multiple SSIDs into one unique SSID deployment. Which of the following features will be possible after this new configuration?

- A. Seamless roaming
- B. Basic service set
- C. WPA
- D. MU-MIMO

**Answer:** A

**NEW QUESTION 273**

- (Topic 3)

Which of the following is a benefit of the spine-and-leaf network topology?

- A. Increased network security
- B. Stable network latency
- C. Simplified network management
- D. Eliminated need for inter-VLAN routing

**Answer:** A

**NEW QUESTION 274**

- (Topic 3)

AGRE tunnel has been configured between two remote sites. Which of the following features, when configured, ensures the GRE overhead does not affect payload?

- A. jumbo frames
- B. Auto medium-dependent Interface
- C. Interface crossover
- D. Collision detection

**Answer:** A

**Explanation:**

One of the features that can be configured to ensure that GRE overhead does not affect payload is A. jumbo frames. Jumbo frames are Ethernet frames that have a payload size larger than 1500 bytes, which is the standard maximum transmission unit (MTU) for Ethernet. By using jumbo frames, more data can be sent in each packet, reducing the overhead ratio and improving efficiency.

Auto medium-dependent interface (MDI), interface crossover, and collision detection are features related to Ethernet physical layer connectivity, but they do not affect GRE overhead or payload.

**NEW QUESTION 276**

- (Topic 3)

Which of the following network types is composed of computers that can all communicate with one another with equal permissions and allows users to directly share what is on or attached to their computers?

- A. Local area network
- B. Peer-to-peer network
- C. Client-server network
- D. Personal area network

**Answer:** B

**Explanation:**

A peer-to-peer network is a type of network in which each computer (or node) can communicate directly with any other node, without requiring a central server or authority. Each node can act as both a client and a server, and can share its own resources, such as files, printers, or internet connection, with other nodes. A peer-to-peer network allows users to directly access and exchange what is on or attached to their computers, with equal permissions and responsibilities

**NEW QUESTION 281**

- (Topic 3)

Which of the following is most likely to have the HIGHEST latency while being the most accessible?

- A. Satellite
- B. DSL
- C. Cable
- D. 4G

**Answer:** A

**NEW QUESTION 286**

- (Topic 3)

While using a secure conference call connection over a corporate VPN, a user moves from a cellular connection to a hotel wireless network. Although the wireless connection and the VPN show a connected status, no network connectivity is present. Which of the following is the most likely cause of this issue?

- A. MAC filtering is configured on the wireless connection.
- B. The VPN and the WLAN connection have an encryption protocol mismatch.
- C. The WLAN is using a captive portal that requires further authentication.
- D. Wireless client isolation is enforced on the WLAN settings.

**Answer:** C

**Explanation:**

A captive portal is a web page that is displayed to newly connected users of a Wi-Fi network before they are granted broader access to network resources. Captive portals are commonly used to present a landing or log-in page which may require authentication, payment, acceptance of an end-user license agreement, acceptable use policy, survey completion, or other valid credentials that both the host and user agree to adhere by<sup>123</sup>

A possible cause of the issue is that the user has not completed the captive portal authentication process, which prevents the VPN from establishing a secure connection over the Wi-Fi network. The user may need to open a web browser and follow the instructions on the captive portal page to gain full access to the internet.

**NEW QUESTION 290**

- (Topic 3)

A network technician is investigating why a core switch is logging excessive amounts of data to the syslog server. The running configuration of the switch showed the following logging information:

```
ip ssh logging events logging level debugging logging host 192.168.1.100 logging synchronous
```

Which of the following changes should the technician make to best fix the issue?

- A. Update the logging host IP.
- B. Change to asynchronous logging.
- C. Stop logging SSH events.
- D. Adjust the logging level.

**Answer:** D

**Explanation:**

The logging level debugging is the highest level of logging, which means that the switch will log every possible event, including low-priority and verbose messages.

This can result in excessive amounts of data being sent to the syslog server, which can affect the performance and storage of the server. To fix the issue, the technician should adjust the logging level to a lower value, such as informational, warning, or error, depending on the desired level of detail and severity. This will reduce the amount of log data generated by the switch and only send the relevant and necessary messages to the syslog server.  
<https://betterstack.com/community/guides/logging/log-levels-explained/>

#### NEW QUESTION 295

- (Topic 3)

Which of the following would be used to forward requests and replies between a DHCP server and client?

- A. Relay
- B. Lease
- C. Scope
- D. Range

**Answer: B**

#### NEW QUESTION 296

- (Topic 3)

Which of the following situations would require an engineer to configure subinterfaces?

- A. In a router-on-a-stick deployment with multiple VLANs
- B. In order to enable inter-VLAN routing on a multilayer switch
- C. When configuring VLAN trunk links between switches
- D. After connecting a router that does not support 802.1Q VLAN tags

**Answer: A**

#### Explanation:

A router-on-a-stick is a configuration that allows a single router interface to route traffic between multiple VLANs on a network<sup>1</sup>. A router-on-a-stick requires sub-interfaces to be configured on the router interface, one for each VLAN. Each sub-interface is assigned a VLAN ID and an IP address that belongs to the corresponding VLAN subnet. The router interface is connected to a switch port that is configured as a trunk port, which allows traffic from multiple VLANs to pass through. The router then performs inter-VLAN routing by forwarding packets between the sub-interfaces based on their destination IP addresses. Inter-VLAN routing is a process that allows devices on different VLANs to communicate with each other. Inter-VLAN routing can be performed by a router-on-a-stick configuration, as explained above, or by a multilayer switch that has routing capabilities. A multilayer switch does not require sub-interfaces to be configured for inter-VLAN routing; instead, it uses switch virtual interfaces (SVIs) that are associated with each VLAN. An SVI is a logical interface that represents a VLAN on a switch and has an IP address that belongs to the VLAN subnet. The switch then performs inter-VLAN routing by forwarding packets between the SVIs based on their destination IP addresses.

VLAN trunking is a method that allows traffic from multiple VLANs to be carried over a single link between switches or routers. VLAN trunking requires the use of a tagging protocol, such as 802.1Q, that adds a header to each frame that identifies its VLAN ID. VLAN trunking does not require sub-interfaces to be configured on the switches or routers; instead, it uses trunk ports that are configured to allow or deny traffic from specific VLANs. The switches or routers then forward packets between the trunk ports based on their VLAN IDs.

\* 802.1Q is a standard that defines how VLAN tagging and trunking are performed on Ethernet networks.

\* 802.1Q adds a 4-byte header to each frame that contains a 12-bit field for the VLAN ID and a 3-bit field for the priority level. 802.1Q does not require sub-interfaces to be configured on the switches or routers; instead, it uses trunk ports that are configured to support 802.1Q tagging and untagging. The switches or routers then forward packets between the trunk ports based on their VLAN IDs and priority levels.

#### NEW QUESTION 297

- (Topic 3)

A technician is equipped with a tablet, a smartphone, and a laptop to troubleshoot a switch with the help of support over the phone. However, the technician is having issues interconnecting all these tools in troubleshooting the switch. Which Of the following should the technician use to gain connectivity?

- A. PAN
- B. WAN
- C. LAN
- D. MAN

**Answer: A**

#### Explanation:

A PAN stands for Personal Area Network and it is a type of network that connects devices within a small range, such as a few meters. A PAN can use wireless technologies such as Bluetooth or Wi-Fi to interconnect devices such as tablets, smartphones, and laptops. A technician can use a PAN to gain connectivity among these tools and troubleshoot the switch.

References: Network+ Study Guide Objective 1.2: Explain devices, applications, protocols and services at their appropriate OSI layers.

#### NEW QUESTION 301

- (Topic 3)

Which of the following security controls indicates unauthorized hardware modifications?

- A. Biometric authentication
- B. Media device sanitization
- C. Change management policy
- D. Tamper-evident seals

**Answer: A**

#### NEW QUESTION 306

- (Topic 3)

An on-call network technician receives an automated email alert stating that a power supply on a firewall has just powered down. Which of the following protocols

would best allow for this level of detailed device monitoring?

- A. TFTP
- B. TLS
- C. SSL
- D. SNMP

**Answer: D**

**Explanation:**

SNMP stands for Simple Network Management Protocol, and it is a protocol that allows network devices to communicate their status, performance, and configuration information to a central management system. SNMP can be used to monitor and manage various aspects of network devices, such as CPU usage, memory utilization, interface statistics, temperature, voltage, power supply, etc. SNMP can also generate alerts or notifications when certain events or thresholds are reached, such as a power supply failure, a link down, or a high traffic volume. SNMP is widely used for network monitoring and troubleshooting purposes, as it provides a comprehensive and detailed view of the network health and performance.

The other options are not correct because they are not protocols that allow for detailed device monitoring. They are:

? TFTP. TFTP stands for Trivial File Transfer Protocol, and it is a protocol that allows for simple and fast file transfer between network devices. TFTP is often used to transfer configuration files, firmware updates, or boot images to network devices, such as routers, switches, or firewalls. TFTP does not provide any monitoring or management capabilities for network devices, nor does it generate any alerts or notifications.

? TLS. TLS stands for Transport Layer Security, and it is a protocol that provides encryption and authentication for data transmission over a network. TLS is often used to secure web traffic, email, or other applications that use TCP as the transport protocol. TLS does not provide any monitoring or management capabilities for network devices, nor does it generate any alerts or notifications.

? SSL. SSL stands for Secure Sockets Layer, and it is a protocol that provides encryption and authentication for data transmission over a network. SSL is the predecessor of TLS, and it is still used to secure some web traffic, email, or other applications that use TCP as the transport protocol. SSL does not provide any monitoring or management capabilities for network devices, nor does it generate any alerts or notifications.

References1: What is SNMP? - Definition from WhatIs.com2: Network+ (Plus) Certification

| CompTIA IT Certifications3: What is TFTP? - Definition from WhatIs.com4: What is TLS? - Definition from WhatIs.com5: What is SSL? - Definition from WhatIs.com

**NEW QUESTION 308**

- (Topic 3)

Which of the following describes a network in which users and devices need to mutually authenticate before any network resource can be accessed?

- A. Least privilege
- B. Local authentication
- C. Zero trust
- D. Need to know

**Answer: C**

**Explanation:**

A zero trust network is a network in which users and devices need to mutually authenticate before any network resource can be accessed. A zero trust network assumes that no one and nothing can be trusted by default, even if they were previously verified or are within the network perimeter. A zero trust network uses various technologies and practices, such as data and log aggregation, cybersecurity analytics, continuous diagnostics and mitigation, user behavior analytics, microsegmentation, and identity and access management, to enforce granular and dynamic policies based on the context and behavior of the users and devices123.

References:

? What is Zero Trust? | Internet of Things | CompTIA3

? The Death of the Perimeter: Zero Trust is (Almost) Here to Stay | Cybersecurity | CompTIA2

? CompTIA Network+ Certification Exam N10-008 Practice Test 17 -

ExamCompass1

**NEW QUESTION 312**

- (Topic 3)

Which of the following steps of the troubleshooting methodology would most likely include checking through each level of the OSI model after the problem has been identified?

- A. Establish a theory.
- B. Implement the solution.
- C. Create a plan of action.
- D. Verify functionality.

**Answer: C**

**Explanation:**

Creating a plan of action is the step of the troubleshooting methodology that would most likely include checking through each level of the OSI model after the problem has been identified. According to the web search results, the troubleshooting methodology consists of the following steps: 12

? Define the problem: Identify the symptoms and scope of the problem, and gather relevant information from users, devices, and logs.

? Establish a theory: Based on the information collected, hypothesize one or more possible causes of the problem, and rank them in order of probability.

? Test the theory: Test the most probable cause first, and if it is not confirmed, eliminate it and test the next one. Repeat this process until the root cause is found or a new theory is needed.

? Create a plan of action: Based on the confirmed cause, devise a solution that can resolve the problem with minimal impact and risk. The solution may involve checking through each level of the OSI model to ensure that all layers are functioning properly and that there are no configuration errors, physical damages, or logical inconsistencies34

? Implement the solution: Execute the plan of action, and monitor the results. If the problem is not solved, revert to the previous state and create a new plan of action.

? Verify functionality: Confirm that the problem is fully resolved and that the network is restored to normal operation. Perform preventive measures if possible to avoid recurrence of the problem.

? Document the findings: Record the problem description, the solution, and the outcome. Update any relevant documentation, such as network diagrams, policies, or procedures.

References1: Troubleshooting Methods for Cisco IP Networks 2: Troubleshooting Methodologies - CBT IT Certification Training 3: How to use the OSI Model to

Troubleshoot Networks 4: How is the OSI model used in troubleshooting? – Sage-Answer

### NEW QUESTION 314

#### SIMULATION - (Topic 3)

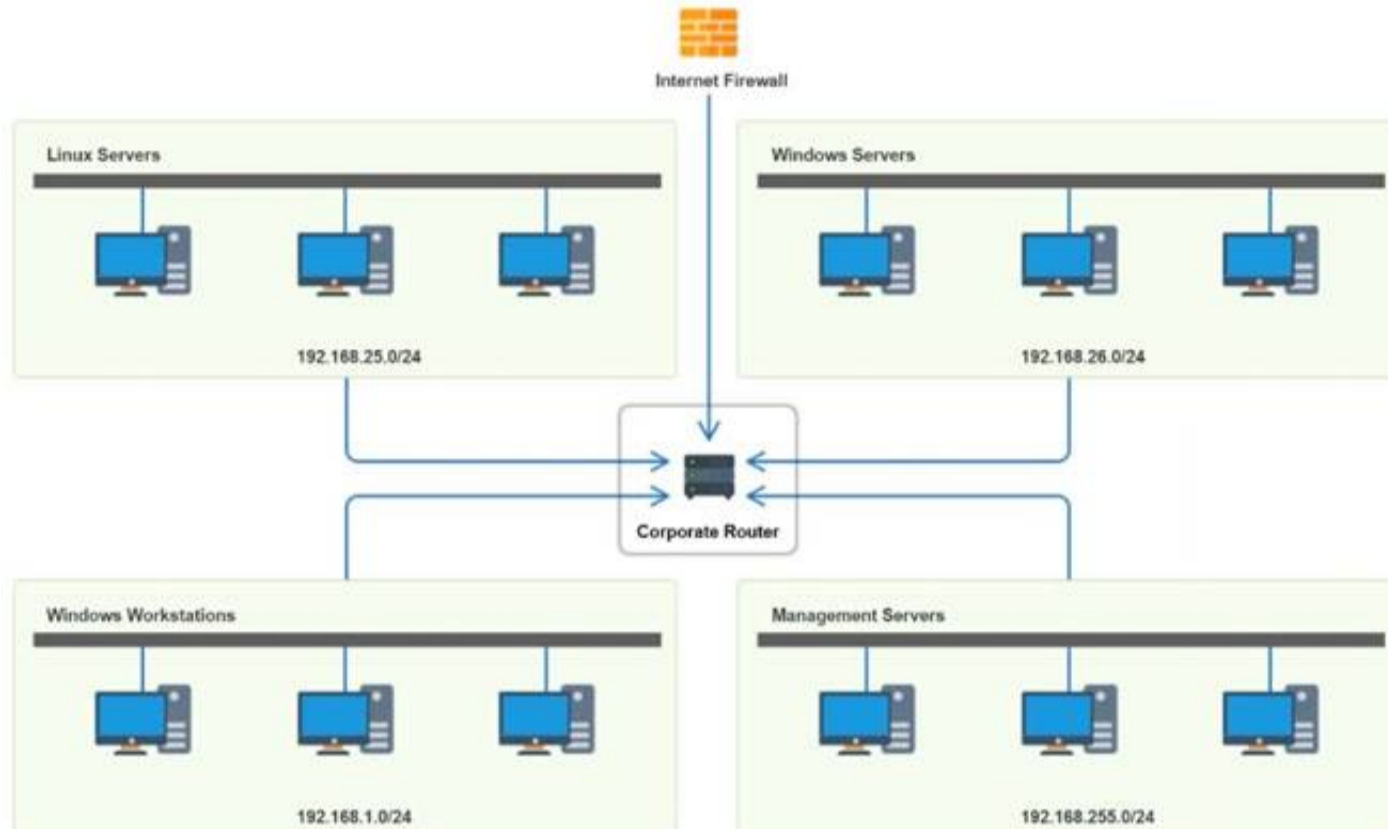
You have been tasked with implementing an ACL on the router that will:

- \* 1. Permit the most commonly used secure remote access technologies from the management network to all other local network segments
- \* 2. Ensure the user subnet cannot use the most commonly used remote access technologies in the Linux and Windows Server segments.
- \* 3. Prohibit any traffic that has not been specifically allowed.

#### INSTRUCTIONS

Use the drop-downs to complete the ACL

If at any time you would like to bring back the initial state of the simulation, please click the Reset All button.



Router Access Control List <span>✕</span>					
Rule	Source	Destination	Protocol	Service	Action
1	192.168.1.0 192.168.25.0 192.168.255.0 192.168.26.0 Any	192.168.1.0 192.168.25.0 192.168.255.0 192.168.26.0 Any	TCP	SSH Telnet HTTP RDP VNC SMB Any	Allow Deny
2	192.168.1.0 192.168.25.0 192.168.255.0 192.168.26.0 Any	192.168.1.0 192.168.25.0 192.168.255.0 192.168.26.0 Any	TCP	SSH Telnet HTTP RDP VNC SMB Any	Allow Deny
3	192.168.1.0 192.168.25.0 192.168.255.0 192.168.26.0 Any	192.168.1.0 192.168.25.0 192.168.255.0 192.168.26.0 Any	TCP	SSH Telnet HTTP RDP VNC SMB Any	Allow Deny
4	192.168.255.0	192.168.26.0	TCP	SMB	Allow
5	192.168.255.0	Any	Any	Any	Deny
6	192.168.1.0 192.168.25.0 192.168.255.0 192.168.26.0 Any	192.168.1.0 192.168.25.0 192.168.255.0 192.168.26.0 Any	TCP	SSH Telnet HTTP RDP VNC SMB Any	Allow Deny
7	192.168.1.0 192.168.25.0 192.168.255.0 192.168.26.0 Any	192.168.1.0 192.168.25.0 192.168.255.0 192.168.26.0 Any	TCP	SSH Telnet HTTP RDP VNC SMB Any	Allow Deny
8	192.168.1.0	Any	Any	Any	Allow
9	192.168.1.0 192.168.25.0 192.168.255.0 192.168.26.0 Any	192.168.1.0 192.168.25.0 192.168.255.0 192.168.26.0 Any	Any	SSH Telnet HTTP RDP VNC SMB Any	Allow Deny

- A. Mastered  
 B. Not Mastered

**Answer:** A

**Explanation:**

Router Access Control List					
Rule	Source	Destination	Protocol	Service	Action
1	192.168.255.0	192.168.26.0	TCP	SSH	Allow
2	192.168.255.0	192.168.25.0	TCP	SSH	Allow
3	192.168.255.0	192.168.1.0	TCP	SSH	Allow
4	192.168.255.0	192.168.26.0	TCP	SMB	Allow
5	192.168.255.0	Any	Any	Any	Deny
6	192.168.1.0	Any	TCP	RDP	Deny
7	192.168.1.0	Any	TCP	VNC	Deny
8	192.168.1.0	Any	Any	Any	Allow
9	Any	Any	Any	Any	Deny

### NEW QUESTION 318

- (Topic 3)

A desktop support department has observed slow wireless speeds for a new line of laptops using the organization's standard image. No other devices have experienced the same issue. Which of the following should the network administrator recommend troubleshooting FIRST to resolve this issue?

- A. Increasing wireless signal power
- B. Installing a new WAP
- C. Changing the protocol associated to the SSID
- D. Updating the device wireless drivers

**Answer:** D

#### Explanation:

Wireless drivers can affect the performance and compatibility of your wireless connection. If only a new line of laptops using the organization's standard image has experienced slow wireless speeds, it could be that their wireless drivers are outdated or incompatible with the network. Updating the device wireless drivers could resolve this issue.

Wireless drivers play an important role in the performance of a wireless connection, as they control how the device interacts with the wireless network. If the laptops in question are using an outdated version of the wireless driver, it could be causing the slow speeds. The network administrator should recommend updating the device wireless drivers first to see if this resolves the issue.

### NEW QUESTION 321

- (Topic 3)

Which of the following is most likely responsible for the security and handling of personal data in Europe?

- A. GDPR
- B. SCADA
- C. SAML
- D. PCI DSS

**Answer:** A

#### Explanation:

GDPR stands for General Data Protection Regulation, which is a European Union regulation on information privacy and security. It applies to any organization that collects or processes personal data of individuals in the EU, and it sets out rules and requirements for data protection, consent, breach notification, and enforcement.

References1: [https://en.wikipedia.org/wiki/General\\_Data\\_Protection\\_Regulation](https://en.wikipedia.org/wiki/General_Data_Protection_Regulation)

### NEW QUESTION 322

- (Topic 3)

A company with multiple routers would like to implement an HA network gateway with the least amount of downtime possible. This solution should not require changes on the gateway setting of the network clients. Which of the following should a technician configure?

- A. Automate a continuous backup and restore process of the system's state of the active gateway.
- B. Use a static assignment of the gateway IP address on the network clients.
- C. Configure DHCP relay and allow clients to receive a new IP setting.
- D. Configure a shared VIP and deploy VRRP on the routers.

**Answer:** D

#### Explanation:

The open standard protocol Virtual Router Redundancy Protocol (VRRP) is similar to HSRP, the differences mainly being in terminology and packet formats. In VRRP, the active router is known as the master, and all other routers in the group are known as backup routers. There is no specific standby router; instead, all backup routers monitor the status of the master, and in the event of a failure, a new master router is selected from the available backup routers based on priority.

#### NEW QUESTION 325

- (Topic 3)

A network security administrator needs to monitor the contents of data sent between a secure network and the rest of the company. Which of the following monitoring methods will accomplish this task?

- A. Port mirroring
- B. Flow data
- C. Syslog entries
- D. SNMP traps

**Answer:** A

#### Explanation:

Port mirroring is a method of monitoring network traffic by copying the data packets from one port to another port on the same switch or router. This allows the network security administrator to analyze the contents of the data sent between different networks without affecting the performance or security of the original traffic. Port mirroring can be configured to capture all traffic or only specific types of traffic, such as VLANs, protocols, or IP addresses.

References:

? Port Mirroring - CompTIA Network+ N10-008 Domain 3.1 - YouTube<sup>1</sup>

? CompTIA Network+ Certification Exam Objectives, page 142

#### NEW QUESTION 327

- (Topic 3)

Which of the following types of connections would need to be set up to provide access from the internal network to an external network so multiple satellite offices can communicate securely using various ports and protocols?

- A. Client-to-site VPN
- B. Clientless VPN
- C. RDP
- D. Site-to-site VPN
- E. SSH

**Answer:** D

#### NEW QUESTION 331

- (Topic 3)

Which of the following most likely occurs when an attacker is between the target and a legitimate server?

- A. IP spoofing
- B. VLAN hopping
- C. Rogue DHCP
- D. On-path attack

**Answer:** D

#### Explanation:

An on-path attack (also known as a man-in-the-middle attack) is a type of security attack where the attacker places themselves between two devices (often a web browser and a web server) and intercepts or modifies communications between the two<sup>1</sup>. The attacker can then collect information as well as impersonate either of the two agents. For example, an on-path attacker could capture login credentials, redirect traffic to malicious sites, or inject malware into legitimate web pages.

The other options are not correct because they describe different types of attacks:

•IP spoofing is the practice of forging the source IP address of a packet to make it appear as if it came from a trusted or authorized source<sup>2</sup>.

•VLAN hopping is a technique that allows an attacker to access a VLAN that they are not authorized to access by sending packets with a modified VLAN tag<sup>3</sup>.

•Rogue DHCP is a scenario where an unauthorized DHCP server offers IP configuration parameters to clients on a network, potentially causing network disruption or redirection to malicious sites<sup>4</sup>.

References

2: Understanding Targeted Attacks: What is a Targeted Attack? 3: Types of attacks - Security on the web | MDN

1: What is an on-path attacker? | Cloudflare

4: [What is a Rogue DHCP Server? - Definition from Techopedia]

#### NEW QUESTION 334

- (Topic 3)

A PC user who is on a local network reports very slow speeds when accessing files on the network server The user's PC Is connecting, but file downloads are very slow when compared to other users' download speeds The PC's NIC should be capable of Gigabit Ethernet. Which of the following will MOST likely fix the issue?

- A. Releasing and renewing the PC's IP address
- B. Replacing the patch cable
- C. Reseating the NIC inside the PC
- D. Flushing the DNS cache

**Answer:** B

#### Explanation:

A slow download speed can be caused by a faulty patch cable, which is the cable used to connect the user's PC to the network server. If the patch cable is damaged, the connection will be slower than expected, resulting in slow download speeds. Replacing the patch cable is the most likely solution to this issue, as it will provide a new, reliable connection that should allow for faster download speeds.

#### NEW QUESTION 337

.....

## THANKS FOR TRYING THE DEMO OF OUR PRODUCT

Visit Our Site to Purchase the Full Set of Actual N10-009 Exam Questions With Answers.

We Also Provide Practice Exam Software That Simulates Real Exam Environment And Has Many Self-Assessment Features. Order the N10-009 Product From:

<https://www.2passeasy.com/dumps/N10-009/>

## Money Back Guarantee

### **N10-009 Practice Exam Features:**

- \* N10-009 Questions and Answers Updated Frequently
- \* N10-009 Practice Questions Verified by Expert Senior Certified Staff
- \* N10-009 Most Realistic Questions that Guarantee you a Pass on Your FirstTry
- \* N10-009 Practice Test Questions in Multiple Choice Formats and Updatesfor 1 Year