



HP

Exam Questions HPE6-A73

Aruba Certified Switching Professional Exam

NEW QUESTION 1

When an AOS-CX switch uses a temporary copy of the Configuration State database, what kind of analysis does NetEdit perform to ensure that the configuration is correct?

- A. Syntax validation
- B. Semantic validation
- C. Conformance validation
- D. Change validation

Answer: D

Explanation:

- Validation processes
 - + Syntax validation
 - When: while typing
 - What: command syntax including in-line help
 - + Semantics validation
 - When: VALIDATE button (in multi-editor) or before DEPLOY
 - What: configuration consistency
 - + Conformance validation
 - When: while editing
 - What: compliance with conformance rules: corporate policies, minimum connectivity requirements, etc.
 - + Change validation
 - When: during DEPLOY (before and after configuration deployment)
 - What: compares device state before and after changes are applied (using show commands)

NEW QUESTION 2

An administrator wants to implement dynamic segmentation policies. The network consists of AOS-CX and Aruba gateways. Which type of forwarding should the administrator implement for users that already connect via wireless, but will also be connecting on Ethernet switch ports?

- A. User-based tunneling (UBT)
- B. Port-based tunneling (PBT)
- C. Switch-to-switch tunneling (SST)
- D. Local switching

Answer: A

NEW QUESTION 3

How does PIM build the IP multicast routing table to route traffic between a multicast source and one or more receivers?

- A. It uses the unicast routing table and reverse path forwarding (RPF)
- B. It uses IGMP and calculates a shortest path tree (SPT)
- C. It uses the shortest path first (SPF) algorithm derived from link state protocols
- D. It uses the Bellman-Ford algorithm derived from distance vector protocols

Answer: A

Explanation:

"PIM also relies on the unicast routing tables to identify the path back to a multicast source. This routing method is known as reverse path forwarding (RPF). The unicast routing protocols create the unicast routing tables. With this information, PIM sets up the distribution tree for the multicast traffic.

NEW QUESTION 4

Which protocol should be configured to allow NetEdit to discover third-party devices?

- A. SNMP
- B. SSH
- C. HTTPS
- D. HTTP

Answer: A

NEW QUESTION 5

When comparing PIM-DM and PIM-SM, which multicast components are only found with PIM-SM in multicast routing? (Choose two.)

- A. IGMP querier
- B. Rendezvous point
- C. Bootstrap router
- D. Shortest path tree
- E. Designated router

Answer: BD

NEW QUESTION 6

An AOS-CX switch is configured to implement downloadable user roles. Examine the AOS-CX switch output:

```
Access1(config)# show aaa authentication port-access interface all client-status
```

Port Access Client Status Details

```
Client 00:50:56:b1:7a:37
```

```
=====
```

Session Details

```
-----
```

```
Port : 1/1/3
```

```
Session Time : 1887s
```

Authentication Details

```
-----
```

```
Status : mac-auth Authenticated
```

```
Auth Precedence : dot1x - Not attempted, mac-auth - Authenticated
```

Authorization Details

```
-----
```

```
Role :
```

```
Status : Not ready
```

Based on this output, what is the state of the user's access?

- A. No downloadable user role exists
- B. MAC authentication has passed, but 802.1X authentication is in progress
- C. The RADIUS request timed out to the AAA server
- D. The port should be configured for 802.1X

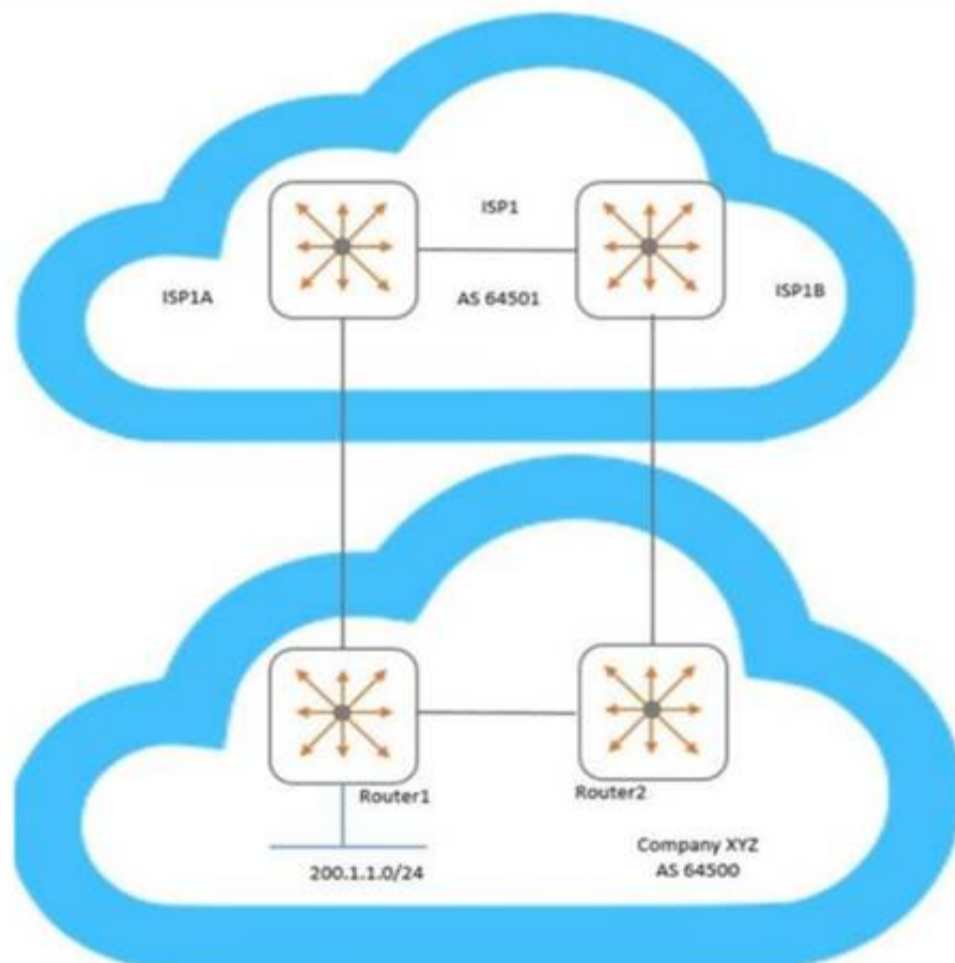
Answer: A

Explanation:

User role "Authenticated" was passed down but does not exist

NEW QUESTION 7

Examine the network topology.



Company XYZ has two connections to a service provider (ISP1). Here is the configuration of Router1:

```
Router1(config)# ip prefix-list AS64500-routes permit 200.1.1.0/24
Router1(config)# route-map To-AS64501 permit seq 10
Router1(config-route-map)# match ip address prefix-list AS64500-routes
Router1(config-route-map)# set metric 100
Router1(config-route-map)# exit
Router1(config)# router bgp 64500
Router1(config-bgp)# address-family ipv4 unicast
Router1(config-bgp-ipv4-uc)# neighbor 192.168.1.1 route-map To-AS64501 out
```

Here is the configuration of Router2:

```
Router2(config)# ip prefix-list AS64500-routes permit 200.1.1.0/24
Router2(config)# route-map To-AS64501 permit seq 10
Router2(config-route-map)# match ip address prefix-list AS64500-routes
Router2(config-route-map)# set metric 200
Router2(config-route-map)# exit
Router2(config)# router bgp 64500
Router2(config-bgp)# address-family ipv4 unicast
Router2(config-bgp-ipv4-uc)# neighbor 192.168.2.1 route-map To-AS64501 out
```

Based on configuration of Router1 and Router2, which BGP metric is being manipulated?

- A. Weight
- B. Multiple exit discriminator
- C. Local preference
- D. AS path length

Answer: B

NEW QUESTION 8

An administrator of a large campus network needs a solution that will provide root cause analytics to quickly identify problems so that they can quickly be fixed. Which AOS-CX switch feature should the administrator utilize to help with root cause analytics?

- A. NAE
- B. VoQ
- C. NetEdit
- D. VSX

Answer: A

NEW QUESTION 9

A customer has twenty AOS-CX switches that will be managed by NetEdit and would like support for NetEdit these switches will exist in the network for at least five years.

Which type of licensing should be used by this customer?

- A. 20 Aruba NetEdit permanent licenses
- B. 20 Aruba NetEdit single node subscription licenses
- C. 25 Aruba NetEdit permanent licenses
- D. 1 Aruba NetEdit SMB License

Answer: B

NEW QUESTION 10

Examine the following AOS-CX switch configuration:

```
Access(config)# access-list ip ext
Access(config-acl-ip)# permit ip any 10.0.11.0/255.0.255.0 count
Access(config-acl-ip)# permit ip any 10.0.12.0/255.0.255.0 log
Access(config-acl-ip)# exit
Access(config)# interface 1/1/3
Access(config-if)# apply access-list ip ext in
Access(config-if)# exit
```

Which statement correctly describes what is allowed for traffic entering interface 1/1/3?

- A. IP traffic from 10.1.11.0/24 is allowed to access 10.1.110.0/24
- B. IP traffic from 10.0.11.0/24 is allowed to access 10.1.12.0/24
- C. Traffic from 10.0.12.0/24 will generate a log record when accessing 10.0.11.0/24
- D. IP traffic from 10.1.12.0/24 is allowed to access 172.0.1.0/23

Answer: B

Explanation:

People seem to be confused by inverted mask/wildcard masks. They would be correct for Cisco switches, but AOS-CX does NOT use wildcard masks; "AOS-CX switches do not support wildcard masks - only prefixes or subnet masks - when created ACEs."

Cisco: 255.0.255.0 = xx.123.xx.123 AOS-CX: 255.0.255.0 = 123.xx.123.xx

NEW QUESTION 10

A network administrator is implementing NAE on AOS-CX switches. When attempting to create an agent on a particular switch, the agent appears in the NAE Agents panel with a red triangle error symbol and a status of "Unknown".

What is the cause of this issue?

- A. The administrator does not have the appropriate credentials to interact with NAE
- B. The number of scripts or agents has exceeded the hardware's capabilities
- C. A connectivity issue exists between NAE and the AOS-CX switch

D. The RESTful API has not been enabled on the AOS-CX switch

Answer: B

Explanation:

https://www.arubanetworks.com/techdocs/AOS-CX/10.06/HTML/5200-7717/Content/Chp_TS/err-nae-age-not

NEW QUESTION 14

An administrator will be replacing a campus switching infrastructure with AOS-CX switches that support VSX capabilities. The campus involves a core, as well as multiple access layers. Which feature should the administrator implement to allow both VSX-capable core switches to process traffic sent to the default gateway in the campus VLANs?

- A. VRF
- B. VRRP
- C. IP helper
- D. Active gateway

Answer: D

Explanation:

Active gateway = both devices route/forward traffic VRRP = Active-standby, only active member routes/forwards traffic

Understand the Active Gateway principle In a VSX system, active gateway provides redundant default gateway functionality for the end-hosts. The default gateway of the end-host is automatically handled by both the VSX systems.

NEW QUESTION 19

What is correct regarding the tunneling of user traffic between AOS-CX switches and Aruba Mobility Controllers (MCs)?

- A. Uses IPSec to protect the management and data traffic
- B. Uses IPSec to protect the management traffic
- C. Supports only port-based tunneling
- D. Uses the same management protocol as Aruba APs

Answer: D

Explanation:

because both AP and Switch use PAPI . Moreover in AOS-CX switch currently not support port based tunnel. AOS-CX switch only support User Based Tunnel (UBT)

NEW QUESTION 20

What is the purpose of the transit VLAN when implementing dynamic segmentation policies involving AOS-CX switches and an Aruba gateway solution?

- A. It identifies the VLAN that the user traffic will be assigned to when it comes out of the tunnel and is forwarded by the gateway.
- B. It identifies the VLAN that the user traffic will be assigned to, whether the traffic is tunneled or locally switched
- C. It defines the VXLAN identifier to identified UBT traffic between the AOS-CX switches and the gateway solution
- D. It identifies the VLAN that the switch will use when tunneling the traffic to the gateway

Answer: D

NEW QUESTION 23

An administrator wants to use an existing Aruba gateway's firewall policies to filter both wireless and wired traffic. Which AOS-CX switch feature should a customer implement to ensure the gateway applies the same or similar firewall policies to users' wired and wireless traffic?

- A. GRE tunneling
- B. User-based tunneling
- C. Port-based tunneling
- D. IPSec tunneling

Answer: A

NEW QUESTION 27

An administrator wants to track what configuration changes were made on a switch. What should the administrator implement to see the configuration changes on an AOS-CX switch?

- A. AAA authorization
- B. Network Analysis Engine (NAE)
- C. AAA authentication
- D. VSX synchronization logging

Answer: B

NEW QUESTION 31

An administrator is supporting a network with the access layer consisting of AOS-CX 6300 and 6400 switches. The administrator needs to quickly deploy Aruba IAPs and security cameras in the network, ensuring that the correct QoS and VLAN settings are dynamically applied to the switch ports. Currently, switches are not configured to do device authentication, and no authentication server exists in the network.

Which AOS-CX feature should the administrator use to dynamically assign the policy settings to the correct switch ports?

- A. Device profiles
- B. Change of authorization
- C. Dynamic segmentation
- D. Voice VLANs

Answer: A

NEW QUESTION 36

A network administrator is implementing a configuration plan in NetEdit. The administrator used NetEdit to push the configuration plan to the switch. Which option in the NetEdit planning section should the administrator select to save the configuration running on the switch to the startup-config?

- A. EDIT
- B. VALIDATE
- C. COMMIT
- D. DEPLOY

Answer: C

NEW QUESTION 41

Examine the output from an AOS-CX switch implementing a dynamic segmentation solution involving downloadable user roles:

Switch# show port-access role clearpass Role information:

Name : icxarubadur_employee-3044-2 Type : clearpass

Status: failed, parsing_failed Reauthentication Period : Authentication Mode : Session Timeout :

The downloadable user roles are not being downloaded to the AOS-CX switch. Based on the above output, what is the problem?

- A. The certificate that ClearPass uses is invalid
- B. The AOS-CX switch does not have the ClearPass certificate involved
- C. DNS fails to resolve the ClearPass server's FQDN
- D. There is a date/time issue between the ClearPass server and the switch

Answer: C

Explanation:

"The top-right example shows a parsing_failed status, typically indicative of either a DNS or network connectivity issue."

NEW QUESTION 43

A network engineer is setting up BGP on AOS-CX switches. The engineer is establishing two different eBGP peering's to two different service providers. The engineer has dozens of contiguous C-class public networks that need to be advertised to the two service providers. The engineer manually defines the networks to be advertised individually with the "network" command.

How can an administrator advertise only a summarized route to the two service providers?

- A. Create a summarized static route and redistribute this into OSPF
- B. Summarize the networks with the "aggregate-address" BGP command
- C. Enable auto-summarization in the IPv4 address family of the BGP configuration
- D. Create a summarized route in OSPF

Answer: B

NEW QUESTION 47

What is a best practice concerning voice traffic and dynamic segmentation on AOS-CX switches?

- A. Controller authentication and user-based tunneling of the voice traffic
- B. Switch authentication and user-based tunneling of the voice traffic
- C. Controller authentication and port-based tunneling of the voice traffic
- D. Switch authentication and local forwarding of the voice traffic

Answer: D

NEW QUESTION 51

An administrator is replacing the current access switches with AOS-CX switches. The access layer switches must authenticate user and networking devices connecting to them. Some devices support no form of authentication, and some support 802.1X. Some ports have a VoIP phone and a PC connected to the same port, where the PC is connected to the data port of the phone and the phone's LAN port is connected to the switch.

Which statement is correct about this situation?

- A. 802.1X must be configured to work in fallback mode
- B. Device fingerprinting is required for authentication
- C. The client-limit setting for port access needs to be changed
- D. Device mode should be implemented

Answer: C

Explanation:

fallback mode if for the radius part; client limit is for multiple authentic on one port (ie phone + pc) From doc :

aaa port-access authenticator <port-list> client-limit <1-32>

Used after executing aaa port-access authenticator <port-list> to convert authentication from port-based to user-based. Specifies user-based 802.1X

authentication and the maximum number of 802.1X-authenticated client sessions allowed on each of the ports in <port-list>. If a port currently has no authenticated client sessions, the next authenticated client session the port accepts determines the untagged VLAN membership to which the port is assigned during the session. If another client session begins later on the same port while an earlier session is active, the later session will be on the same untagged VLAN membership

as the earlier session.

NEW QUESTION 54

An administrator of a company has concerns about upgrading the access layer switches. The users rely heavily on wireless and VoIP telephony. Which is the best recommendation to ensure a short downtime for the users during upgrading the access layer switches?

- A. Install the in-service software upgrade (ISSU) feature with clustering enabled
- B. Install AOS-CX 6300 or 6400 switches with always-on POE
- C. Implement VSF on the AOS-CX access switches
- D. Implement VSX on the AOS-CX access switches

Answer: B

Explanation:

The key is to reduce the impact. VSF or not will have same impact when the switch reboots. But if the switch support always on poe then at least the POE clients will be ready before the switch finish booting up. If you dont have always on POE, then the poe clients will reboot AFTER the switch boots up.

NEW QUESTION 59

A company has just purchased AOS-CX switches. The company has a free and open-source AAA solution. The company wants to implement access control on the Ethernet ports of the AOS-CX switches.

Which security features can the company implement given the equipment that they are using?

- A. Port-based tunneling
- B. Device fingerprinting
- C. Local user roles
- D. Downloadable user roles

Answer: C

NEW QUESTION 61

What is correct regarding rate limiting and egress queue shaping on AOS-CX switches?

- A. Rate limiting and egress queue shaping can be used to restrict inbound traffic
- B. Limits can be defined only for broadcast and multicast traffic
- C. Rate limiting and egress queue shaping can be applied globally
- D. Traffic rate limit is configured on queue level

Answer: D

NEW QUESTION 65

What is the correct way of associating a VRF instance to either a VLAN or an interface?

- A. Switch(config)# interface <interface-ID>Switch(config-if)# vlan access <VLAN-ID> vrf attach <vrf-name>
- B. Switch(config)# vlan <VLAN-ID> vrf attach < vrf-name >
- C. Switch(config)# vlan <VLAN-ID>Switch(config-vlan-<VLAN-ID># vrf attach < vrf-name >
- D. Switch(config)# vlan <VLAN-ID> vrf < vrf-name >

Answer: C

NEW QUESTION 67

.....

Thank You for Trying Our Product

We offer two products:

1st - We have Practice Tests Software with Actual Exam Questions

2nd - Questions and Answers in PDF Format

HPE6-A73 Practice Exam Features:

- * HPE6-A73 Questions and Answers Updated Frequently
- * HPE6-A73 Practice Questions Verified by Expert Senior Certified Staff
- * HPE6-A73 Most Realistic Questions that Guarantee you a Pass on Your FirstTry
- * HPE6-A73 Practice Test Questions in Multiple Choice Formats and Updatesfor 1 Year

100% Actual & Verified — Instant Download, Please Click
[Order The HPE6-A73 Practice Test Here](#)