

PMP Dumps

Project Management Professional

<https://www.certleader.com/PMP-dumps.html>



NEW QUESTION 1

- (Topic 1)

Which of the following is an example of contract administration?

- A. Negotiating the contract
- B. Authorizing contractor work
- C. Developing the statement of work
- D. Establishing evaluation criteria

Answer: B

NEW QUESTION 2

- (Topic 1)

Which type of analysis is used as a general management technique within the Plan Procurements process?

- A. Risk assessment analysis
- B. Make or buy analysis
- C. Contract value analysis
- D. Cost impact analysis

Answer: B

NEW QUESTION 3

- (Topic 1)

Every project creates a unique product, service, or result that may be:

- A. tangible
- B. targeted
- C. organized
- D. variable

Answer: A

NEW QUESTION 4

- (Topic 1)

Which of the following is an example of a risk symptom?

- A. Failure to meet intermediate milestones
- B. Force of nature, such as a flood
- C. Risk threshold target
- D. Crashing, front loading, or fast tracking

Answer: A

NEW QUESTION 5

- (Topic 1)

Which of the following is an input to the Perform Qualitative Risk Analysis process?

- A. Risk register
- B. Risk data quality assessment
- C. Risk categorization
- D. Risk urgency

Answer: A

NEW QUESTION 6

- (Topic 1)

Which of the following is a project constraint?

- A. Twenty-five percent staff turnover is expected.
- B. The technology to be used is cutting-edge.
- C. Project leadership may change due to volatile political environment.
- D. The product is needed in 250 days.

Answer: D

NEW QUESTION 7

- (Topic 1)

A project can be defined as a:

- A. Temporary endeavor undertaken to create a unique product, service, or result
- B. Temporary endeavor that produces repetitive outputs
- C. Permanent endeavor undertaken to create a unique product, service, or result
- D. Permanent endeavor that produces repetitive outputs

Answer: A

NEW QUESTION 8

- (Topic 1)

Which is the document that presents a hierarchical project organization?

- A. WBS
- B. CPI
- C. OBS
- D. BOM

Answer: C

NEW QUESTION 9

- (Topic 1)

Which of the following is the primary output of the Identify Risks process?

- A. Risk management plan
- B. Risk register
- C. Change requests
- D. Risk response plan

Answer: B

NEW QUESTION 10

- (Topic 1)

Which element does a project charter contain?

- A. Management reserves
- B. Work breakdown structure
- C. Stakeholder list
- D. Stakeholder register

Answer: C

NEW QUESTION 10

- (Topic 1)

Project managers who lead by example and follow through on the commitments they make demonstrate the key interpersonal skill of:

- A. influencing
- B. leadership
- C. motivation
- D. coaching

Answer: A

NEW QUESTION 12

- (Topic 1)

The initial development of a Project Scope Management plan uses which technique?

- A. Alternatives identification
- B. Scope decomposition
- C. Expert judgment
- D. Product analysis

Answer: C

NEW QUESTION 14

- (Topic 1)

Monte Carlo is which type of risk analysis technique?

- A. Probability
- B. Quantitative
- C. Qualitative
- D. Sensitivity

Answer: B

NEW QUESTION 18

- (Topic 1)

Which Process Group and Knowledge Area include the Sequence Activities process?

- A. Executing Process Group and Project Time Management
- B. Executing Process Group and Project Cost Management
- C. Planning Process Group and Project Time Management

D. Planning Process Group and Project Cost Management

Answer: C

NEW QUESTION 19

- (Topic 1)

An input required to develop a preliminary project scope statement is:

- A. Organizational Structure
- B. Organizational Process Assets
- C. Organizational Matrix
- D. Organizational Breakdown Structures

Answer: B

NEW QUESTION 21

- (Topic 1)

What name(s) is (are) associated with the Plan-Do-Check-Act cycle?

- A. Pareto
- B. Ishikawa
- C. Shewhart-Deming
- D. Delphi

Answer: C

NEW QUESTION 22

- (Topic 1)

A primary function of a project management office is to support project managers in a variety of ways, including which of the following?

- A. Developing and managing project policies, procedures, templates, and other shared documentation
- B. Acting as the project sponsor by providing financial resources to the project
- C. Resolving issues and change management within a shared governance structure
- D. Aligning organizational/strategic direction that affects project and program goals

Answer: A

NEW QUESTION 23

- (Topic 1)

Which of the following is a tool and technique used in the Develop Schedule process?

- A. Three-point estimates
- B. Resource leveling
- C. Precedence diagramming method
- D. Bottom-up estimating

Answer: B

NEW QUESTION 28

- (Topic 1)

Skills necessary for project management such as motivating to provide encouragement; listening actively; persuading a team to perform an action; and summarizing, recapping, and identifying next steps are known as:

- A. organizational skills
- B. technical skills
- C. communication skills
- D. hard skills

Answer: C

NEW QUESTION 29

- (Topic 1)

The Identify Stakeholders process is found in which Process Group?

- A. Initiating
- B. Monitoring and Controlling
- C. Planning
- D. Executing

Answer: A

NEW QUESTION 31

- (Topic 1)

Which type of diagram includes groups of information and shows relationships between factors, causes, and objectives?

- A. Affinity
- B. Scatter
- C. Fishbone
- D. Matrix

Answer: D

NEW QUESTION 33

- (Topic 1)

The component of the human resource management plan that includes ways in which team members can obtain certifications that support their ability to benefit the project is known as:

- A. recognition and rewards
- B. compliance
- C. staff acquisition
- D. training needs

Answer: D

NEW QUESTION 38

- (Topic 1)

Which of the following is TRUE about most project life cycles?

- A. Staffing level is highest at the start.
- B. The stakeholders' influence is highest at the start.
- C. The level of uncertainty is lowest at the start.
- D. The cost of changes is highest at the start.

Answer: B

NEW QUESTION 42

- (Topic 1)

What tool and technique is used to determine whether work and deliverables meet requirements and product acceptance criteria?

- A. Decomposition
- B. Benchmarking
- C. Inspection
- D. Checklist analysis

Answer: C

NEW QUESTION 45

- (Topic 1)

Through whom do project managers accomplish work?

- A. Consultants and stakeholders
- B. Stakeholders and functional managers
- C. Project team members and consultants
- D. Project team members and stakeholders

Answer: D

NEW QUESTION 48

- (Topic 1)

In which process is a project manager identified and given the authority to apply resources to project activities?

- A. Acquire Project Team
- B. Develop Project Management Plan
- C. Manage Project Execution
- D. Develop Project Charter

Answer: D

NEW QUESTION 53

- (Topic 1)

Where are product requirements and characteristics documented?

- A. Product scope description
- B. Project charter
- C. Preliminary project scope statement
- D. Communications management plan

Answer: A

NEW QUESTION 56

- (Topic 1)

Prototype development may be used as a tool for which of the following risk response strategies?

- A. Avoid
- B. Accept
- C. Mitigate
- D. Exploit

Answer: C

NEW QUESTION 57

- (Topic 1)

Power, urgency, and legitimacy are attributes of which stakeholder classification model?

- A. Salience
- B. Influence/impact
- C. Power/interest
- D. Power/influence

Answer: A

NEW QUESTION 62

- (Topic 1)

Plan Communications Management develops an approach and plan for project communications based on stakeholders' needs and requirements and:

- A. Available organizational assets
- B. Project staff assignments
- C. Interpersonal skills
- D. Enterprise environmental factors

Answer: A

NEW QUESTION 66

- (Topic 1)

The project management processes are usually presented as discrete processes with defined interfaces, while in practice they:

- A. operate separately.
- B. move together in batches,
- C. overlap and interact.
- D. move in a sequence.

Answer: C

NEW QUESTION 69

- (Topic 1)

Organizations perceive risks as:

- A. events that will inevitably impact project and organizational objectives.
- B. the effect of uncertainty on their project and organizational objectives.
- C. events which could have a negative impact on project and organizational objectives.
- D. the negative impact of undesired events on their project and organizational objectives.

Answer: B

NEW QUESTION 71

- (Topic 1)

The formal and informal interaction with others in an organization industry, or professional environment is known as:

- A. negotiation
- B. organizational theory
- C. meeting
- D. networking

Answer: D

NEW QUESTION 72

- (Topic 1)

A temporary endeavor that creates a unique product or service is called a:

- A. Project
- B. Plan
- C. Program
- D. Portfolio

Answer: A

NEW QUESTION 74

- (Topic 1)

A Project Management Office (PMO) manages a number of aspects, including what?

- A. Project scope, schedule, cost, and quality of the products of the work packages
- B. Central coordinator of communication management across projects, and for the delivery of specific project objectives, organization opportunity assessment
- C. Assigns project resources to best meet project objectives
- D. Overall risk, overall opportunity and interdependencies among projects

Answer: D

NEW QUESTION 75

- (Topic 1)

Which of the following processes includes prioritizing risks for subsequent further analysis or action by assessing and combining their probability of occurrence and impact?

- A. Qualitative risk analysis
- B. Quantitative risk analysis
- C. Risk management planning
- D. Risk response planning

Answer: A

NEW QUESTION 79

- (Topic 1)

The output that defines an approach to increase the support and minimize negative impacts of stakeholders is the:

- A. stakeholder management strategy.
- B. communications management plan,
- C. stakeholder register,
- D. performance report.

Answer: A

NEW QUESTION 84

- (Topic 1)

Projects that share common outcomes, collective capability, knowledge, or skills are often grouped into a:

- A. portfolio
- B. program
- C. selection
- D. sub portfolio

Answer: B

NEW QUESTION 86

- (Topic 1)

Risk responses reflect an organization's perceived balance between:

- A. risk taking and risk avoidance.
- B. known risk and unknown risk.
- C. identified risk and analyzed risk.
- D. varying degrees of risk.

Answer: A

NEW QUESTION 90

- (Topic 1)

What risk technique is used to quantify the probability and impact of risks on project objectives?

- A. Expert judgment
- B. Risk registry
- C. Risk response planning
- D. Interviewing

Answer: D

NEW QUESTION 94

- (Topic 1)

Which process uses occurrence probability and impact on project objectives to assess the priority of identified risks?

- A. Identify Risks
- B. Perform Qualitative Risk Analysis
- C. Plan Risk Management
- D. Perform Quantitative Risk Analysis

Answer:

B

NEW QUESTION 99

- (Topic 1)

Which enterprise environmental factors are considered during cost estimating?

- A. Marketplace conditions and commercial databases
- B. Marketplace conditions and company structure
- C. Commercial databases and company structure
- D. Existing human resources and market place conditions

Answer: A

NEW QUESTION 102

- (Topic 1)

Which type of risk diagram is useful for showing time ordering of events?

- A. Ishikawa
- B. Milestone
- C. Influence
- D. Decision tree

Answer: C

NEW QUESTION 106

- (Topic 1)

Which process is usually a rapid and cost-effective means of establishing priorities for Plan Risk Responses?

- A. Identify Risks
- B. Plan Risk Management
- C. Perform Qualitative Risk Analysis
- D. Perform Quantitative Risk Analysis

Answer: C

NEW QUESTION 109

- (Topic 1)

In project management, a temporary project can be:

- A. Completed without planning
- B. A routine business process
- C. Long in duration
- D. Ongoing to produce goods

Answer: C

NEW QUESTION 110

- (Topic 1)

Which is an output of the Collect Requirements process?

- A. Requirements traceability matrix
- B. Project scope statement
- C. WBS dictionary
- D. Work performance measurements

Answer: A

NEW QUESTION 112

- (Topic 1)

The risk shared between the buyer and seller is determined by the:

- A. assumption log.
- B. quality checklist.
- C. risk register.
- D. contract type.

Answer: D

NEW QUESTION 115

- (Topic 1)

Which Control Scope input is compared to actual results to determine if corrective action is required for the project?

- A. Scope baseline
- B. Scope management plan
- C. Change management plan
- D. Cost baseline

Answer: A

NEW QUESTION 117

- (Topic 1)

A project manager seeking insight on previous stakeholder management plans and their effectiveness should evaluate:

- A. Historical information and the lessons-learned database.
- B. Historical information and the stakeholder register.
- C. Organizational process assets and the lessons-learned database.
- D. Project documents and historical information.

Answer: A

NEW QUESTION 121

- (Topic 1)

A stakeholder expresses a need not known to the project manager. The project manager most likely missed a step in which stakeholder management process?

- A. Plan Stakeholder Management
- B. Identify Stakeholders
- C. Manage Stakeholder Engagement
- D. Control Stakeholder Engagement

Answer: A

NEW QUESTION 122

- (Topic 1)

Stakeholders can be identified in later stages of the project because the Identify Stakeholders process should be:

- A. Continuous
- B. Discrete
- C. Regulated
- D. Arbitrary

Answer: A

NEW QUESTION 124

- (Topic 1)

The Verify Scope process is primarily concerned with:

- A. formalizing acceptance of the completed project deliverables.
- B. accuracy of the work deliverables.
- C. formalizing approval of the scope statement.
- D. accuracy of the work breakdown structure (WBS).

Answer: A

NEW QUESTION 125

- (Topic 1)

Documented identification of a flaw in a project component together with a recommendation is termed a:

- A. corrective action.
- B. preventive action.
- C. non-conformance report,
- D. defect repair.

Answer: D

NEW QUESTION 130

- (Topic 1)

Projects are separated into phases or subprojects; these phases include:

- A. feasibility study, concept development, design, and prototype.
- B. initiate, plan, execute, and monitor.
- C. Develop Charter, Define Activities, Manage Stakeholder Expectations, and Report Performance.
- D. Identify Stakeholders, develop concept, build, and test.

Answer: A

NEW QUESTION 131

- (Topic 1)

Which is a tool or technique used in scope definition?

- A. Templates, forms, and standards
- B. Change requests
- C. Stakeholder analysis

D. Project assumptions

Answer: C

NEW QUESTION 132

- (Topic 1)

Which statement is true about the project management body of knowledge?

- A. Recognized by every project manager
- B. Constantly evolving
- C. The sum of all knowledge related to project management
- D. A sum of knowledge that should be applied on every project

Answer: B

NEW QUESTION 134

- (Topic 1)

The Define Scope process is in which of the following Process Groups?

- A. Initiating
- B. Planning
- C. Monitoring and Controlling
- D. Executing

Answer: B

NEW QUESTION 135

- (Topic 1)

When a project is undertaken to reduce defects in a product or service, the objective of the project is to create a/an:

- A. improvement
- B. program
- C. result
- D. portfolio

Answer: A

NEW QUESTION 140

- (Topic 1)

Identify Risks is part of which Process Group?

- A. Planning
- B. Executing
- C. Closing
- D. Initiating

Answer: A

NEW QUESTION 142

- (Topic 1)

Which of the following is an example of a technique used in quantitative risk analysis?

- A. Sensitivity analysis
- B. Probability and impact matrix
- C. Risk data quality assessment
- D. Risk categorization

Answer: A

NEW QUESTION 147

- (Topic 1)

The degree of uncertainty an entity is willing to take on in anticipation of a reward is known as its risk:

- A. management
- B. response
- C. tolerance
- D. appetite

Answer: D

NEW QUESTION 151

- (Topic 1)

Which of the following response strategies are appropriate for negative risks or threats?

- A. Share, Accept, Transfer, or Mitigate

- B. Exploit, Enhance, Share, or Accept
- C. Mitigate, Share, Avoid, or Accept
- D. Avoid, Mitigate, Transfer, or Accept

Answer: D

NEW QUESTION 155

- (Topic 1)

Which technique is commonly used for the Perform Quantitative Risk Analysis process?

- A. Brainstorming
- B. Strategies for opportunities
- C. Decision tree analysis
- D. Risk data quality assessment

Answer: C

NEW QUESTION 160

- (Topic 1)

Most experienced project managers know that:

- A. every project requires the use of all processes in the PMBOK® Guide.
- B. there is no single way to manage a project.
- C. project management techniques are risk free.
- D. there is only one way to manage projects successfully.

Answer: B

NEW QUESTION 164

- (Topic 1)

In which type of contract are the performance targets established at the onset and the final contract price determined after completion of all work based on the sellers performance?

- A. Firm-Fixed-Price (FFP)
- B. Fixed Price with Economic Price Adjustments (FP-EPA)
- C. Fixed-Price-Incentive-Fee (FPIF)
- D. Cost Plus Fixed Fee (CPFF)

Answer: C

NEW QUESTION 169

- (Topic 1)

Which type of probability distribution is used to represent uncertain events such as the outcome of a test or a possible scenario in a decision tree?

- A. Uniform
- B. Continuous
- C. Discrete
- D. Linear

Answer: C

NEW QUESTION 170

- (Topic 1)

When addressing roles and responsibilities, which item ensures that the staff has the skills required to complete project activities?

- A. Authority
- B. Role
- C. Competency
- D. Responsibility

Answer: C

NEW QUESTION 174

- (Topic 1)

Which of the following is a narrative description of products, services, or results to be delivered by a project?

- A. Project statement of work
- B. Business case
- C. Accepted deliverable
- D. Work performance information

Answer: A

NEW QUESTION 179

- (Topic 1)

What is the definition of Direct and Manage Project Execution?

- A. Integrating all planned activities
- B. Performing the activities included in the plan
- C. Developing and maintaining the plan
- D. Execution of deliverables

Answer: B

NEW QUESTION 180

- (Topic 1)

Which is an input to the Scope Verification Process?

- A. Performance report
- B. Work breakdown structure
- C. Requested changes
- D. Project scope statement

Answer: D

NEW QUESTION 181

- (Topic 1)

Scope verification is PRIMARILY concerned with which of the following?

- A. Acceptance of the work deliverables.
- B. Accuracy of the work deliverables.
- C. Approval of the scope statement.
- D. Accuracy of the work breakdown structure.

Answer: A

NEW QUESTION 185

- (Topic 1)

Which input to the Plan Risk Management process provides information on high-level risks?

- A. Project charter
- B. Enterprise environmental factors
- C. Stakeholder register
- D. Organizational process assets

Answer: A

NEW QUESTION 188

- (Topic 1)

What is one of the objectives of Project Risk Management?

- A. Decrease the probability and impact of an event on project objectives.
- B. Distinguish between a project risk and a project issue so that a risk mitigation plan can be put in place.
- C. Increase the probability and impact of positive events.
- D. Removal of project risk.

Answer: C

NEW QUESTION 191

- (Topic 1)

Which group creativity technique asks a selected group of experts to answer questionnaires and provide feedback regarding the responses from each round of requirements gathering?

- A. The Delphi technique
- B. Nominal group technique
- C. Affinity diagram
- D. Brainstorming

Answer: A

NEW QUESTION 194

- (Topic 1)

An element of the project scope statement is:

- A. Acceptance criteria.
- B. A stakeholder list.
- C. A summary budget,
- D. High-level risks.

Answer: A

NEW QUESTION 196

- (Topic 1)

The scope of a project cannot be defined without some basic understanding of how to create the specified:

- A. objectives
- B. schedule
- C. product
- D. approach

Answer: C

NEW QUESTION 201

- (Topic 1)

Inputs to Identifying Stakeholders include:

- A. Project charter, procurement documents, enterprise environmental factors, and organizational process assets.
- B. Project charter, stakeholder analysis, enterprise environmental factors, and organizational process assets.
- C. Project charter, stakeholder analysis, enterprise environmental factors, and stakeholder management strategy.
- D. Project charter, procurement documents, expert judgment, and organizational process assets.

Answer: A

NEW QUESTION 205

- (Topic 1)

The component of the risk management plan that documents how risk activities will be recorded is called:

- A. tracking
- B. scoping
- C. timing
- D. defining

Answer: A

NEW QUESTION 206

- (Topic 1)

A weighting system is a tool for which area of Conduct Procurements?

- A. Plan contracting
- B. Requesting seller responses
- C. Selecting seller's
- D. Planning purchase and acquisition

Answer: C

NEW QUESTION 208

- (Topic 1)

Which of the following are an enterprise environmental factor that can influence the Identify Risks process?

- A. Work performance reports
- B. Assumptions logs
- C. Network diagrams
- D. Academic studies

Answer: D

NEW QUESTION 209

- (Topic 1)

Which of the following processes are part of the Project Integration Management Knowledge Area?

- A. Develop Project Management Plan, Collect Requirements, Create WBS
- B. Develop Project Management Plan, Control Scope, Develop Schedule
- C. Develop Project Charter, Define Scope, Estimate Costs
- D. Develop Project Charter, Direct and Manage Project Execution, Close Project or Phase

Answer: D

NEW QUESTION 213

- (Topic 1)

For any given project, the project manager, in collaboration with the project team, is responsible for:

- A. Applying knowledge, skills, and processes uniformly.
- B. Informing the project sponsor about which processes are going to be used.
- C. Tailoring the processes to fit the abilities of the organization.
- D. Determining which particular processes are appropriate.

Answer: D

NEW QUESTION 218

- (Topic 1)

What characteristic do project and operational work share in common?

- A. Performed by systems
- B. Constrained by limited resources
- C. Repetitiveness
- D. Uniqueness

Answer: B

NEW QUESTION 221

- (Topic 1)

The scope management plan is a subsidiary of which project document?

- A. Schedule management plan
- B. Project management plan
- C. Quality management plan
- D. Resource management plan

Answer: B

NEW QUESTION 223

- (Topic 1)

The process of prioritizing risks for further analysis or action is known as:

- A. Plan Risk Management.
- B. Plan Risk Responses.
- C. Perform Qualitative Risk Analysis.
- D. Perform Quantitative Risk Analysis.

Answer: C

NEW QUESTION 226

- (Topic 1)

Which of the following is an information gathering technique in Identify Risks?

- A. Influence diagrams
- B. Brainstorming
- C. Assumption analysis
- D. SWOT analysis

Answer: B

NEW QUESTION 230

- (Topic 1)

Which Collect Requirements output links the product requirements to the deliverables that satisfy them?

- A. Requirements documentation
- B. Requirements traceability matrix
- C. Project management plan updates
- D. Project documents updates

Answer: B

NEW QUESTION 232

- (Topic 1)

A project lifecycle is defined as:

- A. a collection of generally sequential and sometimes overlapping project phases.
- B. a process required to ensure that the project includes all the work required, and only the work required, to complete the project successfully.
- C. a recognized standard for the project management profession.
- D. the application of knowledge, skills, tools, and techniques to project activities to meet the project requirements.

Answer: A

NEW QUESTION 234

- (Topic 1)

The purpose of developing a project scope management plan is to:

- A. Manage the timely completion of the project.
- B. Ensure that the project includes all of the work required.
- C. Make sure the project will satisfy the needs for which it was begun.
- D. Reduce the risk of negative events in the project.

Answer:

B

NEW QUESTION 235

- (Topic 1)

Projects are undertaken by an organization to support the:

- A. Product performance.
- B. Budget process.
- C. Collective capabilities.
- D. Organizational strategy.

Answer: D**NEW QUESTION 237**

- (Topic 1)

Which Control Stakeholder Engagement tool or technique allows the project manager to consolidate and facilitate distribution of reports?

- A. Information management systems
- B. Work performance reports
- C. Stakeholder analysis
- D. Data gathering and representation

Answer: A**NEW QUESTION 240**

- (Topic 1)

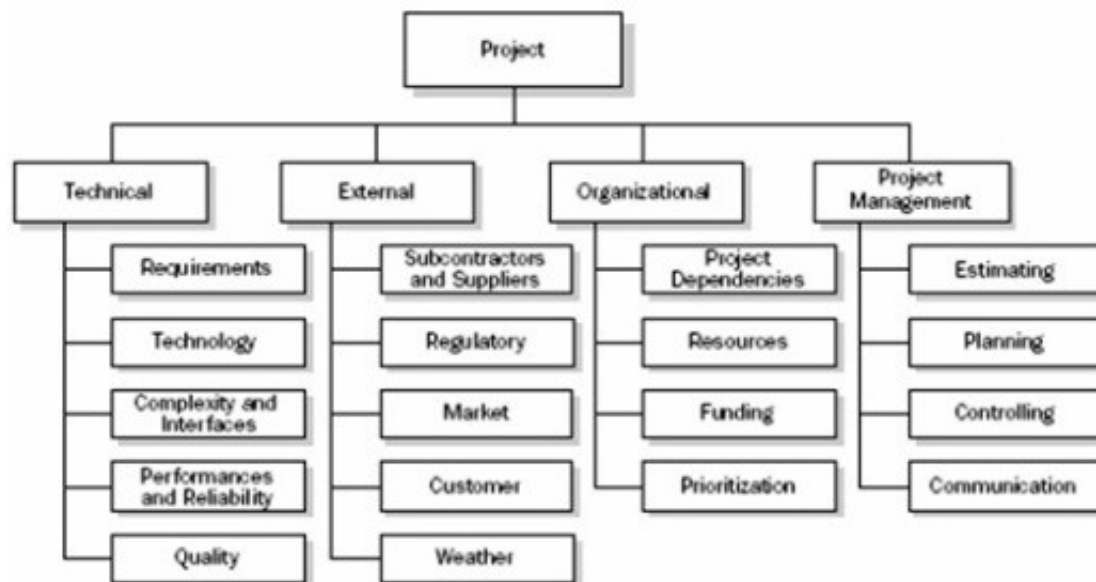
The creation of an internet site to engage stakeholders on a project is an example of which type of communication?

- A. Push
- B. Pull
- C. Interactive
- D. Iterative

Answer: B**NEW QUESTION 245**

- (Topic 1)

The diagram below is an example of a:



- A. Risk breakdown structure (RBS).
- B. Project team.
- C. SWOT Analysis.
- D. Work breakdown structure (WBS).

Answer: A**NEW QUESTION 246**

- (Topic 1)

Which of the following is a tool or technique used in the Acquire Project Team process?

- A. Networking
- B. Training
- C. Negotiation
- D. Issue log

Answer: C**NEW QUESTION 248**

- (Topic 1)

Technical capability, past performance, and intellectual property rights are examples of:

- A. performance measurement criteria
- B. source selection criteria
- C. product acceptance criteria
- D. phase exit criteria

Answer: B

NEW QUESTION 252

- (Topic 1)

The organization's perceived balance between risk taking and risk avoidance is reflected in the risk:

- A. Responses
- B. Appetite
- C. Tolerance
- D. Attitude

Answer: A

NEW QUESTION 255

- (Topic 1)

Which of the following methods is a project selection technique?

- A. Flowcharting
- B. Earned value
- C. Cost-benefit analysis
- D. Pareto analysis

Answer: C

NEW QUESTION 256

- (Topic 1)

The business needs, assumptions, and constraints and the understanding of the customers needs and high-level requirements are documented in the:

- A. Project management plan.
- B. Project charter.
- C. Work breakdown structure.
- D. Stakeholder register.

Answer: B

NEW QUESTION 261

- (Topic 1)

As part of a mid-project evaluation, the project sponsor has asked for a forecast of the total project cost. What should be used to calculate the forecast?

- A. BAC
- B. EAC
- C. ETC
- D. WBS

Answer: B

NEW QUESTION 264

- (Topic 1)

Which of the following is the process of identifying the specific actions to be performed to produce the project deliverables?

- A. Estimate Activity Durations
- B. Sequence Activities
- C. Define Activities
- D. Activity Attributes

Answer: C

NEW QUESTION 269

- (Topic 1)

What are the components of the “triple constraint”?

- A. Scope, time, requirements
- B. Resources, time, cost
- C. Scope, management, cost
- D. Scope, time, cost

Answer: D

NEW QUESTION 270

- (Topic 1)

Define Activities and Estimate Activity Resources are processes in which project management Knowledge Area?

- A. Project Time Management
- B. Project Cost Management
- C. Project Scope Management
- D. Project Human Resource Management

Answer: A

NEW QUESTION 274

- (Topic 1)

Which input to the Identify Stakeholders process provides information about internal or external parties related to the project?

- A. Procurement documents
- B. Communications plan
- C. Project charter
- D. Stakeholder register

Answer: C

NEW QUESTION 275

- (Topic 1)

The product scope description is used to:

- A. Gain stakeholders' support for the project.
- B. Progressively elaborate the characteristics of the product, service, or result.
- C. Describe the project in great detail.
- D. Define the process and criteria for accepting a completed product, service, or result.

Answer: B

NEW QUESTION 279

- (Topic 1)

Which process involves determining, documenting, and managing stakeholders' needs and requirements to meet project objectives?

- A. Collect Requirements
- B. Plan Scope Management
- C. Define Scope
- D. Define Activities

Answer: A

NEW QUESTION 280

- (Topic 2)

Which tools or techniques will the project manager use for developing the project team?

- A. Negotiation
- B. Roles and responsibilities
- C. Recognition and rewards
- D. Prizing and promoting

Answer: C

NEW QUESTION 281

- (Topic 2)

One of the key benefits of the Plan Human Resource Management process is that it:

- A. outlines team selection guidelines and team member responsibilities.
- B. establishes project roles and responsibilities.
- C. improves teamwork, interpersonal skills, and competencies.
- D. provides an accurate appraisal of team member performance.

Answer: B

NEW QUESTION 284

- (Topic 2)

The process of identifying and documenting project roles, responsibilities, required skills, and reporting relationships and creating a staffing management plan is known as:

- A. Develop Project Team.
- B. Manage Project Team.
- C. Acquire Project Team.
- D. Plan Human Resource Management.

Answer: D

NEW QUESTION 287

- (Topic 2)

The definition of when and how often the risk management processes will be performed throughout the project life cycle is included in which risk management plan component?

- A. Timing
- B. Methodology
- C. Risk categories
- D. Budgeting

Answer: A

NEW QUESTION 291

- (Topic 2)

Which of the following are inputs to Activity Definition?

- A. Project Scope Statement and Work Breakdown Structure
- B. Activity list and Arrow Diagram
- C. Change Requests Lists and Organizational Process Assets
- D. Project Management Plan and Resource Availability

Answer: A

NEW QUESTION 292

- (Topic 2)

Which of the following is a tool and technique for Estimate Activity Durations?

- A. Parametric estimating
- B. Monte Carlo analysis
- C. Alternatives analysis
- D. Bottom-up estimating

Answer: A

NEW QUESTION 295

- (Topic 2)

A project manager is appointed full-time to a project and is given full-time administrative staff and full-time project team members. This situation describes which type of organizational structure?

- A. Projectized
- B. Weak matrix
- C. Functional
- D. Balanced matrix

Answer: A

NEW QUESTION 298

- (Topic 2)

Which tool or technique is an examination of industry and specific vendor capabilities?

- A. Independent estimates
- B. Market research
- C. Analytical techniques
- D. Bidder conferences

Answer: B

NEW QUESTION 302

- (Topic 2)

Which of the following is used to illustrate the connections between work packages or activities and project team members?

- A. Hierarchical-type charts (HTC)
- B. Organizational breakdown structure (OBS)
- C. Work breakdown structure (WBS)
- D. Responsibility assignment matrix (RAM)

Answer: D

NEW QUESTION 303

- (Topic 2)

A method of obtaining early feedback on requirements by providing a working model of the expected product before actually building is known as:

- A. Benchmarking.
- B. Context diagrams.
- C. Brainstorming.
- D. Prototyping.

Answer: D

NEW QUESTION 306

- (Topic 2)

The only Process Group that comprises processes that typically occur from the beginning to the end of the project life cycle is:

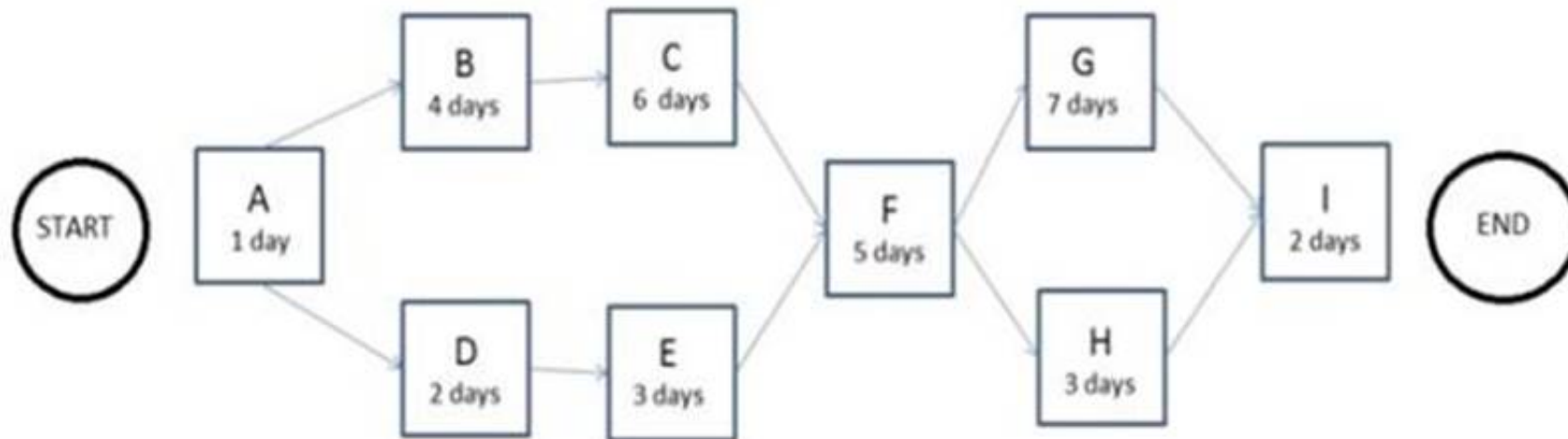
- A. Planning.
- B. Executing,
- C. Monitoring and Controlling.
- D. Closing.

Answer: A

NEW QUESTION 307

- (Topic 2)

The following is a network diagram for a project.



The total float for the project is how many days?

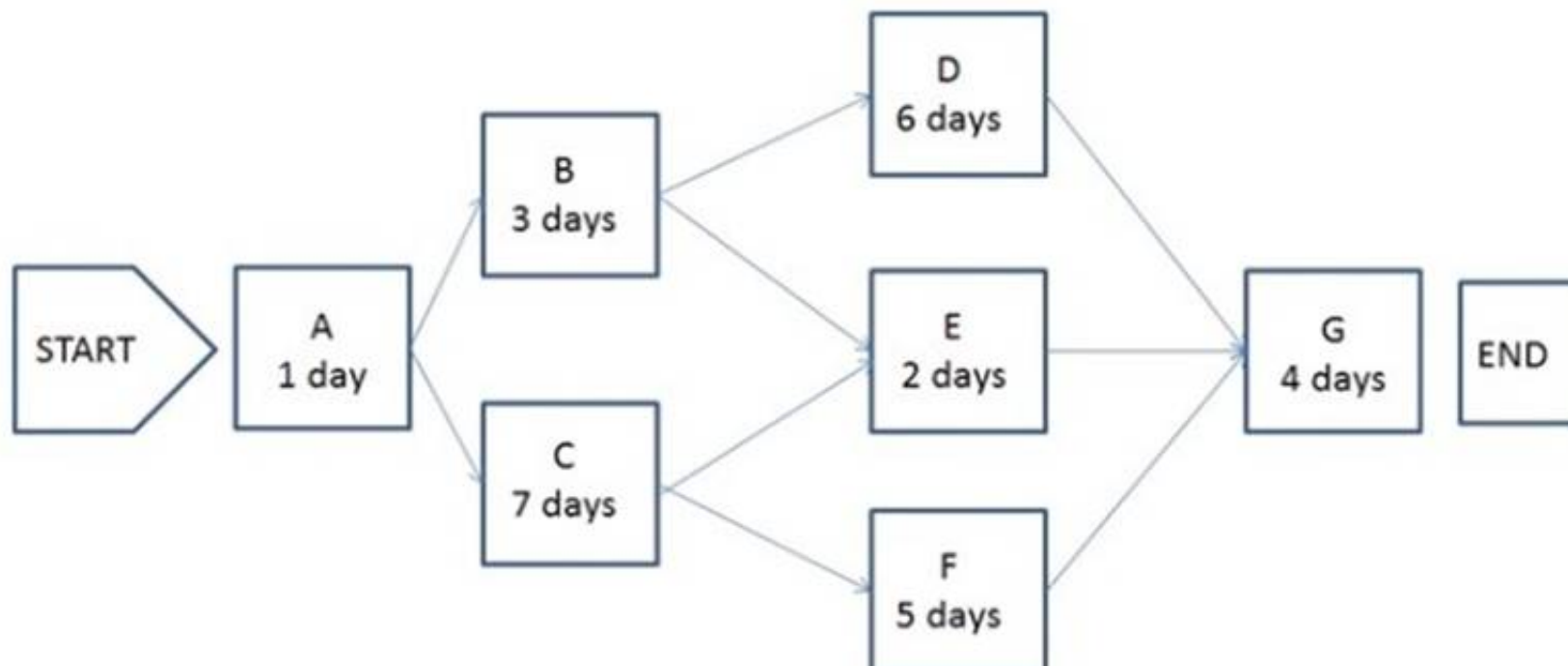
- A. 5
- B. 9
- C. 12
- D. 14

Answer: B

NEW QUESTION 311

- (Topic 2)

The following is a network diagram for a project.



The critical path for the project is how many days in duration?

- A. 10
- B. 12
- C. 14
- D. 17

Answer: D

NEW QUESTION 312

- (Topic 2)

In Plan Risk Management, which of the management plans determines who will be available to share information on various risks and responses at different times and locations?

- A. Schedule

- B. Quality
- C. Communications
- D. Cost

Answer: C

NEW QUESTION 315

- (Topic 2)

Which of the following is contained within the communications management plan?

- A. An organizational chart
- B. Glossary of common terminology
- C. Organizational process assets
- D. Enterprise environmental factors

Answer: B

NEW QUESTION 318

- (Topic 2)

Quality metrics are an output of which process?

- A. Plan Quality
- B. Perform Quality Control
- C. Perform Quality Assurance
- D. Perform Qualitative Risk Analysis

Answer: A

NEW QUESTION 320

- (Topic 2)

A project team attempts to produce a deliverable and finds that they have neither the expertise nor the time to complete the deliverable in a timely manner. This issue could have been avoided if they had created and followed a:

- A. risk management plan
- B. human resource management plan
- C. scope management plan
- D. procurement management plan

Answer: D

NEW QUESTION 323

- (Topic 2)

Which is used to solicit proposals from prospective sellers?

- A. Procurement statement of work
- B. Resource calendars
- C. Procurement document
- D. Independent estimates

Answer: C

NEW QUESTION 326

- (Topic 2)

Which Project Time Management process includes bottom-up estimating as a tool or technique?

- A. Estimate Activity Resources
- B. Sequence Activities
- C. Estimate Activity Durations
- D. Develop Schedule

Answer: A

NEW QUESTION 327

- (Topic 2)

When can pre-assignment of project team members occur?

- A. When the project uses capital expenditures
- B. When the required staff can be acquired from outside sources
- C. When the project would be ignored due to travel expenses
- D. When the project is the result of specific people being promised as part of a competitive proposal

Answer: D

NEW QUESTION 328

- (Topic 2)

The processes required to establish the scope of the project, refine the objectives, and define the course of action required to attain the objectives that the project has been undertaken to achieve are grouped within which Process Group?

- A. Initiating
- B. Planning
- C. Executing
- D. Monitoring and Controlling

Answer: B

NEW QUESTION 330

- (Topic 2)

Which of the following lists contain processes that are included within Project Procurement Management?

- A. Plan purchases and acquisitions, plan contracting, request seller responses, select sellers
- B. Plan purchases and acquisitions, request seller responses, select sellers, schedule control
- C. Plan purchases and acquisitions, acquire project team, request seller responses, select sellers
- D. Plan purchases and acquisitions, acquire project team, contract approval, select sellers

Answer: A

NEW QUESTION 333

- (Topic 2)

Definitions of probability and impact, revised stakeholder tolerances, and tracking are components of which subsidiary plan?

- A. Cost management plan
- B. Quality management plan
- C. Communications management plan
- D. Risk management plan

Answer: D

NEW QUESTION 337

- (Topic 2)

The lowest level normally depicted in a work breakdown structure (WBS) is called a/an:

- A. work package
- B. deliverable
- C. milestone
- D. activity

Answer: A

NEW QUESTION 341

- (Topic 2)

Project Scope Management is primarily concerned with:

- A. Developing a detailed description of the project and product.
- B. Determining how requirements will be analyzed, documented, and managed.
- C. Defining and controlling what is and is not included in the project.
- D. Formalizing acceptance of the completed project deliverables.

Answer: C

NEW QUESTION 346

- (Topic 2)

A benefit of using virtual teams in the Acquire Project Team process is the reduction of the:

- A. cultural differences of team members
- B. possibility of communication misunderstandings
- C. costs associated with travel
- D. costs associated with technology

Answer: C

NEW QUESTION 349

- (Topic 2)

The milestone list is an input to which process from the Planning Process Group?

- A. Define Activities
- B. Estimate Activity Durations
- C. Estimate Activity Resources
- D. Sequence Activities

Answer: D

NEW QUESTION 351

- (Topic 2)

An example of a group decision-making technique is:

- A. Nominal group technique.
- B. Majority.
- C. Affinity diagram.
- D. Multi-criteria decision analysis.

Answer: B

NEW QUESTION 354

- (Topic 2)

In the Define Activities process, the schedule management plan is used to:

- A. Capture the lessons learned from other projects for comparison.
- B. Contain the standard activity list.
- C. Document and support the project change requests.
- D. Prescribe the level of detail needed to manage the work.

Answer: D

NEW QUESTION 358

- (Topic 2)

Which quality tool may prove useful in understanding and estimating the cost of quality in a process?

- A. Checksheets
- B. Histograms
- C. Flowcharts
- D. Control charts

Answer: C

NEW QUESTION 360

- (Topic 2)

Project deliverables that have been completed and checked for correctness through the Control Quality process are known as:

- A. Verified deliverables.
- B. Validated deliverables.
- C. Acceptance criteria.
- D. Activity resource requirements.

Answer: A

NEW QUESTION 363

- (Topic 2)

Taking out insurance in relation to risk management is called what?

- A. Transference
- B. Avoidance
- C. Exploring
- D. Mitigation

Answer: A

NEW QUESTION 366

- (Topic 2)

When does the project team determine which dependencies are discretionary?

- A. Before the Define Activities process
- B. During the Define Activities process
- C. Before the Sequence Activities process
- D. During the Sequence Activities process

Answer: D

NEW QUESTION 368

- (Topic 2)

The progressive detailing of the project management plan is called:

- A. expert judgment.
- B. rolling wave planning.
- C. work performance information.
- D. specification.

Answer: B

NEW QUESTION 372

- (Topic 2)

Which of the following are three inputs to the risk register?

- A. Risk register updates, stakeholder register, and quality management plan
- B. Communication management plan, enterprise environmental factors, and activity duration estimates
- C. Risk management plan, activity cost estimates, and project documents
- D. Project scope statement, organizational process assets, and scope baseline

Answer: C

NEW QUESTION 377

- (Topic 2)

The primary benefit of the Plan Schedule Management process is that it:

- A. provides guidance to identify time or schedule challenges within the project.
- B. tightly links processes to create a seamless project schedule.
- C. guides how the project schedule will be managed throughout the project.
- D. creates an overview of all activities broken down into manageable subsections.

Answer: C

NEW QUESTION 379

- (Topic 2)

The organizational process assets that are of particular importance to Plan Communications are:

- A. Formal plans and procedures
- B. Lessons learned and historical information
- C. Guidelines and knowledge bases
- D. Stakeholder positions and their influence

Answer: B

NEW QUESTION 382

- (Topic 2)

Which of the following tools or techniques is used for Estimate Activity Durations?

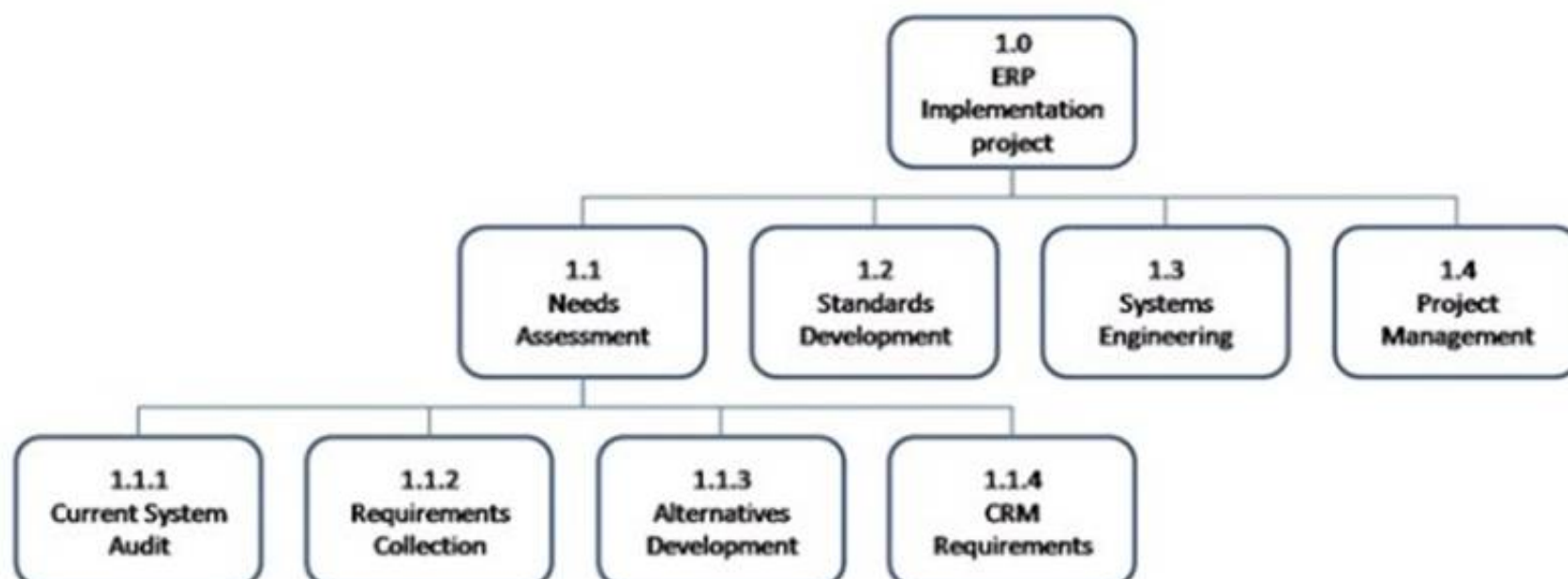
- A. Critical path method
- B. Rolling wave planning
- C. Precedence diagramming method
- D. Parametric estimating

Answer: D

NEW QUESTION 385

- (Topic 2)

Which type of graphic is displayed below?



- A. Work breakdown structure
- B. Context diagram
- C. Control chart
- D. Pareto diagram

Answer: A

NEW QUESTION 387

- (Topic 2)

Which process develops options and actions to enhance opportunities and reduce threats to project objectives?

- A. Identify Risks
- B. Control Risks
- C. Plan Risk Management
- D. Plan Risk Responses

Answer: D

NEW QUESTION 388

- (Topic 2)

The item that provides more detailed descriptions of the components in the work breakdown structure (WBS) is called a WBS:

- A. dictionary.
- B. chart.
- C. report.
- D. register.

Answer: A

NEW QUESTION 389

- (Topic 2)

A work package has been scheduled to cost \$1,000 to complete and was to be finished today. As of today, the actual expenditure is \$1,200 and approximately half of the work has been completed. What is the cost variance?

- A. -700
- B. -200
- C. 200
- D. 500

Answer: A

NEW QUESTION 394

- (Topic 2)

Which action should a project manager take to ensure that the project management plan is effective and current?

- A. Conduct periodic project performance reviews.
- B. Identify quality project standards.
- C. Follow ISO 9000 quality standards.
- D. Complete the quality control checklist.

Answer: A

NEW QUESTION 399

- (Topic 2)

Which is an example of Administer Procurements?

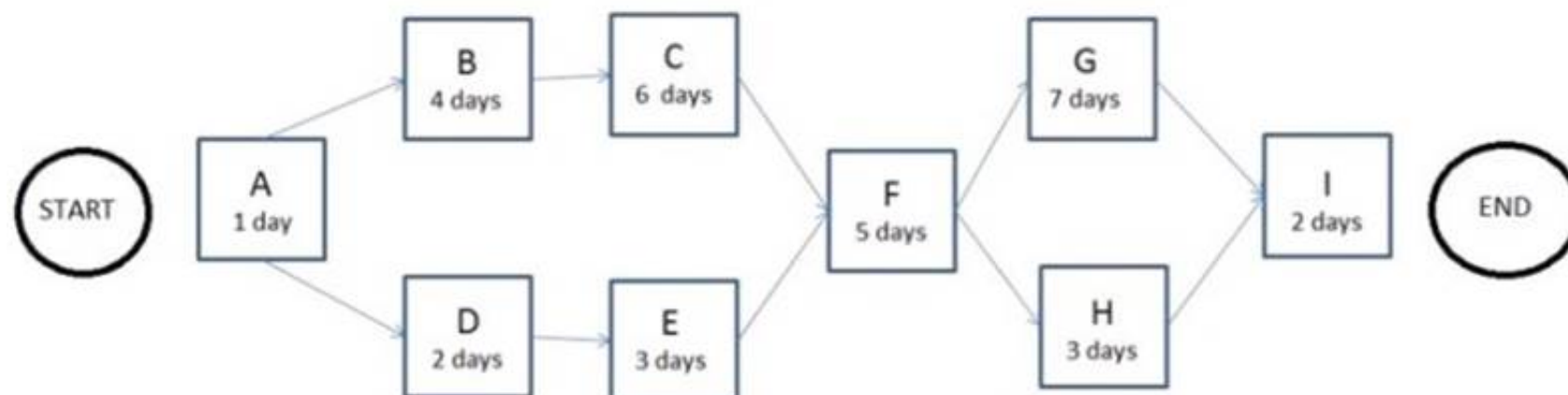
- A. Negotiating the contract
- B. Authorizing contractor work
- C. Developing the statement of work
- D. Establishing evaluation criteria

Answer: B

NEW QUESTION 402

- (Topic 2)

The following is a network diagram for a project.



The free float for Activity H is how many days?

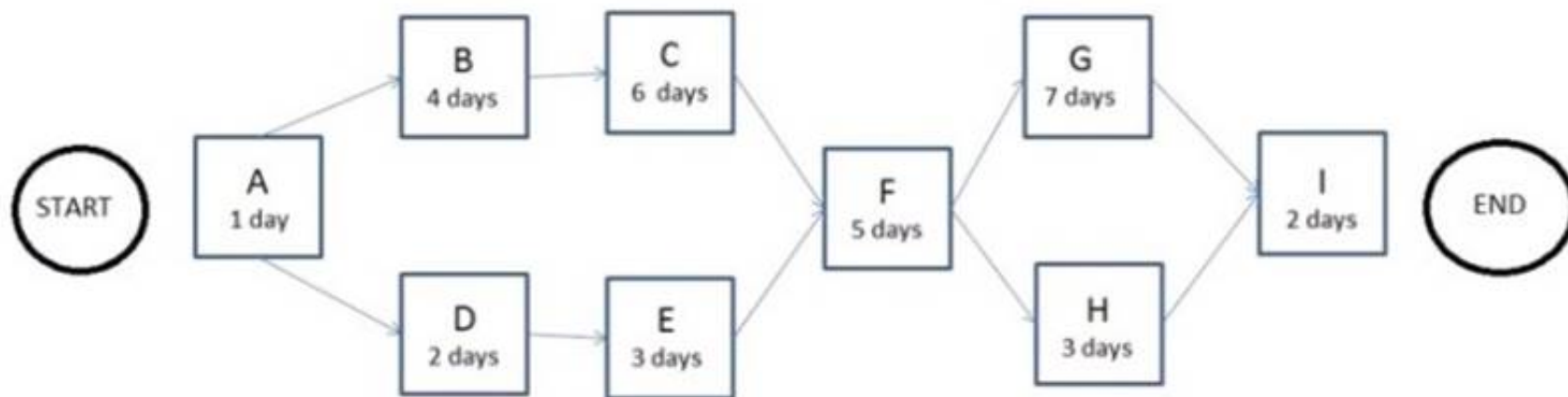
- A. 4
- B. 5
- C. 10
- D. 11

Answer: A

NEW QUESTION 407

- (Topic 2)

The following is a network diagram for a project.



What is the critical path for the project?

- A. A-B-C-F-G-I
- B. A-B-C-F-H-I
- C. A-D-E-F-G-I
- D. A-D-E-F-H-I

Answer: A

NEW QUESTION 408

- (Topic 2)

Which of the following statements correctly characterizes pull communication?

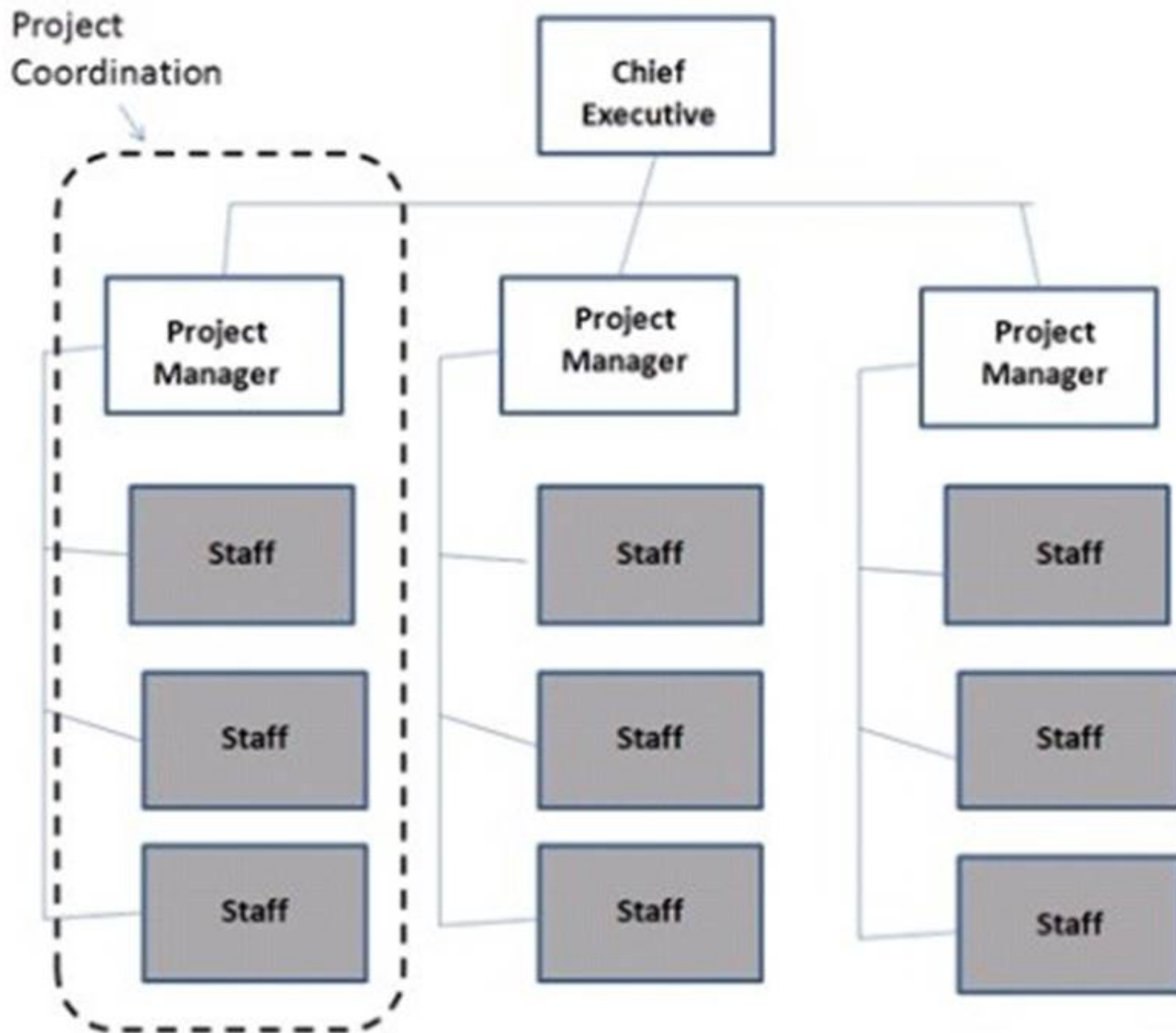
- A. It includes letters, memos, reports, emails, and faxes.
- B. It requires recipients to access communication content at their own discretion.
- C. It is the most efficient way to ensure a common understanding among all participants.
- D. It is primarily used when the volume of information to be transferred is minimal.

Answer: B

NEW QUESTION 412

- (Topic 2)

Which type of organizational structure is displayed in the diagram provided?



- A. Balanced matrix
- B. Projectized
- C. Strong matrix
- D. Functional

Answer: B

NEW QUESTION 413

- (Topic 2)

Which quality management and control tool is useful in visualizing parent-to-child relationships in any decomposition hierarchy that uses a systematic set of rules that define a nesting relationship?

- A. Interrelationship digraphs
- B. Tree diagram
- C. Affinity diagram
- D. Network diagram

Answer: B

NEW QUESTION 414

- (Topic 2)

An output of the Create WBS process is:

- A. Scope baseline.
- B. Project scope statement.
- C. Organizational process assets.
- D. Requirements traceability matrix.

Answer: A

NEW QUESTION 417

- (Topic 2)

An input used in developing the communications management plan is:

- A. Communication models.

- B. Enterprise environmental factors.
- C. Organizational communications,
- D. Organizational cultures and styles.

Answer: B

NEW QUESTION 421

- (Topic 2)

In a construction project schedule, what is the logical relationship between the delivery of the concrete materials and the pouring of concrete?

- A. Start-to-start (SS)
- B. Start-to-finish (SF)
- C. Finish-to-finish (FF)
- D. Finish-to-start (FS)

Answer: D

NEW QUESTION 425

- (Topic 2)

Which tool and technique of quality planning involves comparing actual or planned practices to those of other projects to generate ideas for improvement and provide a basis by which to measure performance?

- A. Histogram
- B. Quality audits
- C. Benchmarking
- D. Performance measurement analysis

Answer: C

NEW QUESTION 429

- (Topic 2)

Inputs to the Plan Schedule Management process include:

- A. Organizational process assets and the project charter,
- B. Enterprise environmental factors and schedule tools.
- C. Time tables and Pareto diagrams.
- D. Activity attributes and resource calendars.

Answer: A

NEW QUESTION 434

- (Topic 2)

What is the total float of the critical path?

- A. Can be any number
- B. Zero or positive
- C. Zero or negative
- D. Depends on the calendar

Answer: C

NEW QUESTION 437

- (Topic 2)

A special type of bar chart used in sensitivity analysis for comparing the relative importance of the variables is called a:

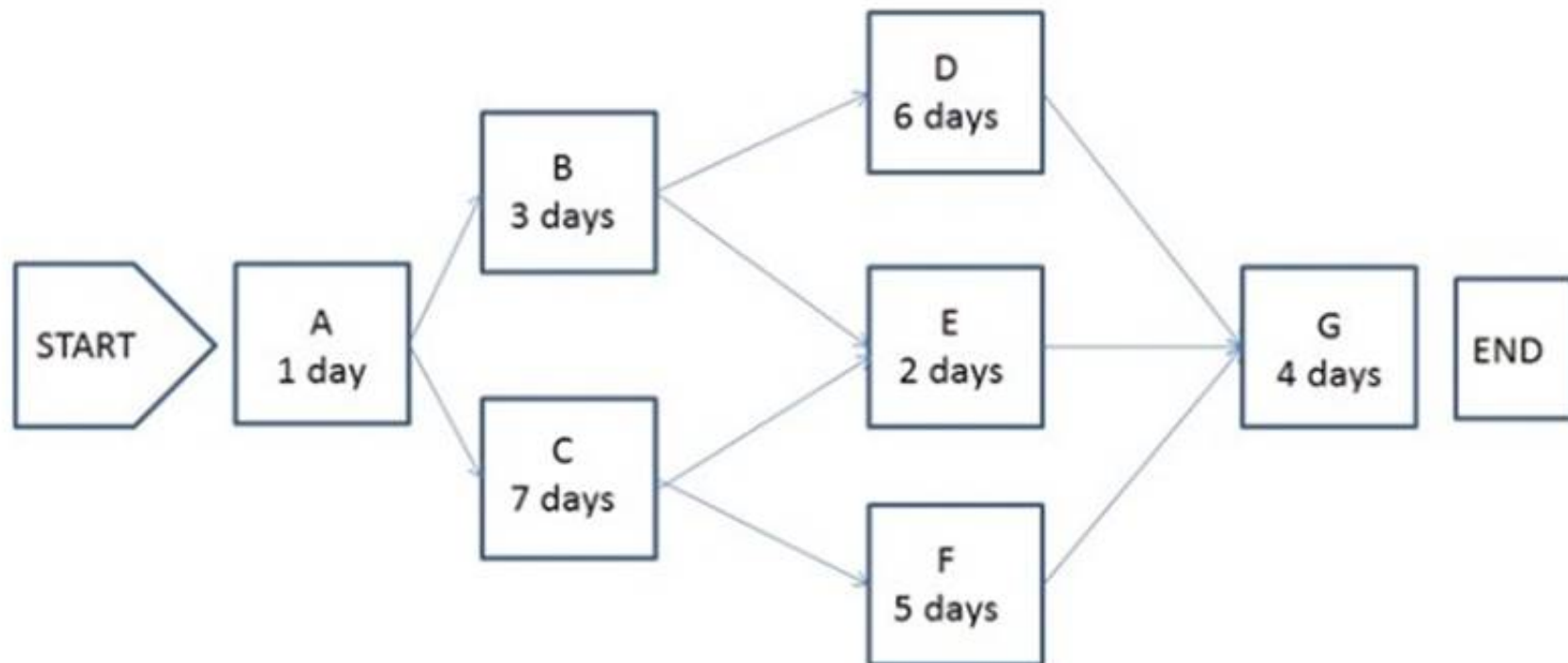
- A. triangular distribution
- B. tornado diagram
- C. beta distribution
- D. fishbone diagram

Answer: B

NEW QUESTION 440

- (Topic 2)

The following is a network diagram for a project.



The shortest non-critical path for the project is how many days in duration?

- A. 10
- B. 12
- C. 14
- D. 16

Answer: A

NEW QUESTION 442

- (Topic 2)

Which document includes the project scope, major deliverables, assumptions, and constraints?

- A. Project charter
- B. Project scope statement
- C. Scope management plan
- D. Project document updates

Answer: B

NEW QUESTION 443

- (Topic 2)

For a project to be successful, the project team must do which of the following?

- A. Complete the project in sequential phases.
- B. Overlook minor stakeholders.
- C. Produce ongoing repetitive products, services, or results.
- D. Select the appropriate processes required to meet the project objective.

Answer: D

NEW QUESTION 444

- (Topic 2)

Using values such as scope, cost, budget, and duration or measures of scale such as size, weight, and complexity from a previous similar project as the basis for estimating the same parameter or measurement for a current project describes which type of estimating?

- A. Bottom-up
- B. Parametric
- C. Analogous
- D. Three-point

Answer: C

NEW QUESTION 447

- (Topic 2)

Create WBS is part of which of the following Knowledge Areas?

- A. Project Integration Management
- B. Project Scope Management
- C. Project Time Management
- D. Project Cost Management

Answer: B

NEW QUESTION 449

- (Topic 2)

A full-time project manager with low to moderate authority and part-time administrative staff is working in an organizational structure with which type of matrix?

- A. Strong
- B. Weak
- C. Managed
- D. Balanced

Answer: D

NEW QUESTION 452

- (Topic 2)

A tool and technique used during the Create WBS process is:

- A. decomposition
- B. expert judgment
- C. inspection
- D. variance analysis

Answer: A

NEW QUESTION 457

- (Topic 2)

Who, along with the project manager, is supposed to direct the performance of the planned project activities and manage the various technical and organizational interfaces that exist within the project?

- A. The customer and functional managers
- B. The risk owners and stakeholders
- C. The sponsors and stakeholders
- D. The project management team

Answer: D

NEW QUESTION 460

- (Topic 2)

Portfolio Management is management of:

- A. a project by dividing the project into more manageable sub-projects.
- B. a project by utilizing a portfolio of general management skills such as planning, organizing, staffing, executing, and controlling.
- C. all projects undertaken by a company.
- D. a collection of projects that are grouped together to facilitate effective management and meet strategic business objectives.

Answer: D

NEW QUESTION 465

- (Topic 2)

How should a stakeholder who is classified as high power and low interest be grouped in a power/interest grid during stakeholder analysis?

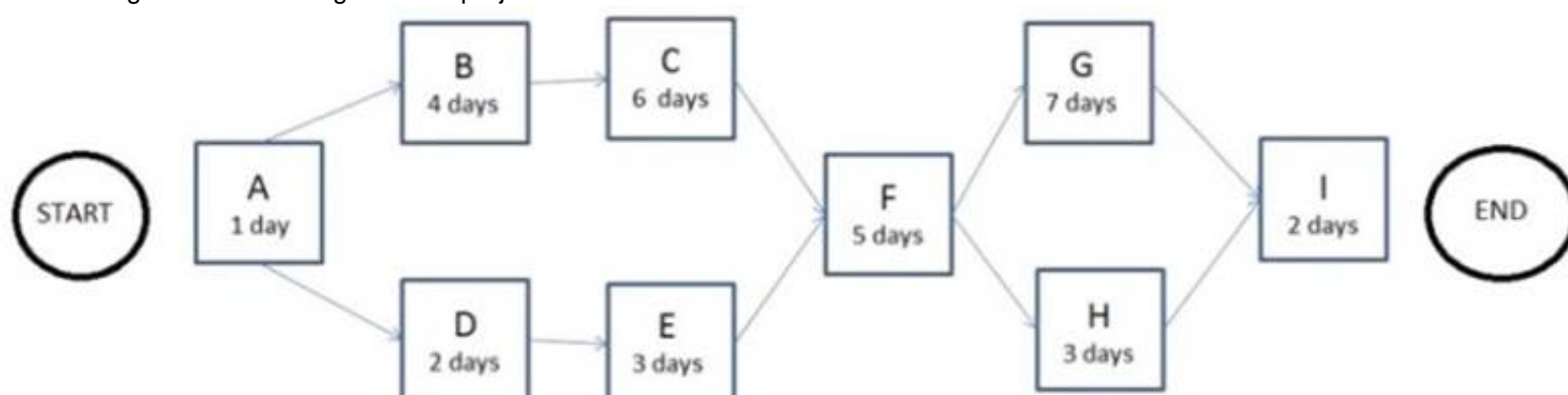
- A. Keep satisfied
- B. Keep informed
- C. Manage closely
- D. Monitor

Answer: A

NEW QUESTION 469

- (Topic 2)

The following is a network diagram for a project.



How many possible paths are identified for this project?

- A. 3
- B. 4
- C. 6
- D. 7

Answer: B

NEW QUESTION 473

- (Topic 2)

Outputs of the Control Communications process include:

- A. expert judgment and change requests.
- B. work performance information and change requests.
- C. organizational process asset updates and an issue log.
- D. project management plan updates and an issue log.

Answer: B

NEW QUESTION 478

- (Topic 2)

Organizations manage portfolios based on which of the following types of plans?

- A. Strategic
- B. Project
- C. Program
- D. Operational

Answer: A

NEW QUESTION 479

- (Topic 2)

What is the function of a Project Management Office (PMO)?

- A. To focus on the coordinated planning, prioritization, and execution of projects and subprojects that are tied to the parent organizations or the client's overall business objectives.
- B. To coordinate and manage the procurement of projects relevant to the parent organization's business objectives and to administer the project charters accordingly.
- C. To administer performance reviews for the project manager and the project team members and to handle any personnel and payroll issues.
- D. To focus on the specified project objectives and to manage the scope, schedule, cost, and quality of the work packages.

Answer: A

NEW QUESTION 483

- (Topic 2)

While preparing the project management plan on a weekly basis, the project manager indicates the intention to provide an issues report to the staff via e-mail. In which part of the plan will this type of information be included?

- A. Communications management plan
- B. Human resource plan
- C. Quality management plan
- D. Procurement management plan

Answer: A

NEW QUESTION 485

- (Topic 2)

What is the responsibility of the project manager and the functional manager respectively?

- A. Oversight for an administrative area; a facet of the core business
- B. Achieving the project objectives; providing management oversight for an administrative area
- C. A facet of the core business; achieving the project objectives
- D. Both are responsible for achieving the project objectives.

Answer: B

NEW QUESTION 486

- (Topic 2)

Which is an output from Distribute Information?

- A. Earned value analysis
- B. Trend analysis
- C. Project records
- D. Performance reviews

Answer: C

NEW QUESTION 489

- (Topic 2)

In an organization with a projectized organizational structure, who controls the project budget?

- A. Functional manager
- B. Project manager
- C. Program manager

D. Project management office

Answer: B

NEW QUESTION 491

- (Topic 2)

Which document defines how a project is executed, monitored and controlled, and closed?

- A. Strategic plan
- B. Project charter
- C. Project management plan
- D. Service level agreement

Answer: C

NEW QUESTION 494

- (Topic 2)

The process of identifying and documenting the specific actions to be performed to produce the project deliverables is known as:

- A. Define Activities.
- B. Sequence Activities.
- C. Define Scope.
- D. Control Schedule.

Answer: A

NEW QUESTION 496

- (Topic 2)

Which Define Activities tool or technique is used for dividing and subdividing the project scope and project deliverables into smaller, more manageable parts?

- A. Decomposition
- B. Inspection
- C. Project analysis
- D. Document analysis

Answer: A

NEW QUESTION 500

- (Topic 2)

Which is an input to the Verify Scope process?

- A. Performance report
- B. Work breakdown structure (WBS)
- C. Requested changes
- D. Project management plan

Answer: D

NEW QUESTION 504

- (Topic 2)

Co-location is a tool and technique of:

- A. Develop Human Resource Plan.
- B. Manage Project Team.
- C. Develop Project Team.
- D. Acquire Project Team.

Answer: C

NEW QUESTION 509

- (Topic 2)

What component of the project scope definition defines project exclusions?

- A. Project boundaries
- B. Project constraints
- C. Project assumptions
- D. Project objectives

Answer: A

NEW QUESTION 514

- (Topic 3)

An output of the Manage Project Team process is:

- A. project management plan updates

- B. project staff assignments updates
- C. team performance assessments
- D. resource calendar updates

Answer: A

NEW QUESTION 515

- (Topic 3)

An imposed date for completion of the project by the customer is an example of a project:

- A. deliverable
- B. assumption
- C. constraint
- D. exclusion

Answer: C

NEW QUESTION 517

- (Topic 3)

The Project Human Resource Management process that involves confirming human resource availability and obtaining the team necessary to complete project activities is:

- A. Acquire Project Team.
- B. Plan Human Resource Management.
- C. Manage Project Team.
- D. Develop Project Team.

Answer: A

NEW QUESTION 519

- (Topic 3)

Which process requires implementation of approved changes?

- A. Direct and Manage Project Execution
- B. Monitor and Control Project Work
- C. Perform Integrated Change Control
- D. Close Project or Phase

Answer: A

NEW QUESTION 524

- (Topic 3)

What scope definition technique is used to generate different approaches to execute and perform the work of the project?

- A. Build v
- B. buy
- C. Expert judgment
- D. Alternatives identification
- E. Product analysis

Answer: C

NEW QUESTION 528

- (Topic 3)

What is the schedule performance index (SPI) using the following data? BAC = \$100,000 PV = \$50,000 AC = \$80,000 EV = \$40,000

- A. 1
- B. 0.4
- C. 0.5
- D. 0.8

Answer: D

NEW QUESTION 532

- (Topic 3)

Projects can intersect with an organization's operations at various points during the product life cycle such as:

- A. When there is an operations shutdown (i.
- B. a strike).
- C. When developing new products, upgrading products, or expanding outputs.
- D. When a project transitions from a temporary to a permanent status.
- E. When the project manager is promoted to operations manager.

Answer: B

NEW QUESTION 536

- (Topic 3)

Which of the following is a tool and technique used in all processes within Project Integration Management?

- A. Records management system
- B. Expert judgment
- C. Project management software
- D. Issue log

Answer: B

NEW QUESTION 537

- (Topic 3)

The project manager for XYZ stationers is sequencing the activities for the project to set up a new office. It is known from knowledge of best practices that it is better to wait for the painters to finish painting the walls before the new floors are installed. This is an example of which of the following types of dependency?

- A. Precedence
- B. Discretionary
- C. External
- D. Mandatory

Answer: B

NEW QUESTION 538

- (Topic 3)

Which of the following methods of performance review examines project performance over time to determine if performance is improving or deteriorating?

- A. Earned value performance
- B. Trend analysis
- C. Cost-benefit analysis
- D. Variance analysis

Answer: B

NEW QUESTION 543

- (Topic 3)

What is a deliverable-oriented, hierarchical decomposition of the work to be executed to accomplish the project objectives and create the required deliverables?

- A. Organizational breakdown structure (OBS)
- B. Work performance information
- C. Work package
- D. Work breakdown structure (WBS)

Answer: D

NEW QUESTION 548

- (Topic 3)

The process of monitoring the status of the project to update project progress and manage changes to the schedule baseline is:

- A. Control Schedule.
- B. Quality Control.
- C. Perform Integrated Change Control.
- D. Develop Schedule.

Answer: A

NEW QUESTION 553

- (Topic 3)

Which of the following is a component of three-point estimates?

- A. Probabilistic
- B. Most likely
- C. Expected
- D. Anticipated

Answer: B

NEW QUESTION 558

- (Topic 3)

A procurement management plan is a subsidiary of which other type of plan?

- A. Resource plan
- B. Project management plan
- C. Cost control plan
- D. Expected monetary value plan

Answer: B

NEW QUESTION 559

- (Topic 3)

Which of the following is an example of push communication?

- A. Intranet sites
- B. Video conferencing
- C. Knowledge repositories
- D. Press releases

Answer: D

NEW QUESTION 562

- (Topic 3)

The PV is \$1000, EV is \$2000, and AC is \$1500. What is CPI?

- A. 1.33
- B. 2
- C. 0.75
- D. 0.5

Answer: A

NEW QUESTION 563

- (Topic 3)

After Define Activities and Sequence Activities, the next process is:

- A. Estimate Activity Resources.
- B. Estimate Activity Durations,
- C. Develop Schedule.
- D. Control Schedule.

Answer: A

NEW QUESTION 565

- (Topic 3)

In which process might a project manager use risk reassessment as a tool and technique?

- A. Perform Qualitative Risk Analysis
- B. Risk Control
- C. Monitor and Control Project Work
- D. Plan Risk Responses

Answer: B

NEW QUESTION 569

- (Topic 3)

Which Define Activities output extends the description of the activity by identifying the multiple components associated with each activity?

- A. Project document updates
- B. Activity list
- C. Activity attributes
- D. Project calendars

Answer: C

NEW QUESTION 574

- (Topic 3)

The process of confirming human resource availability and obtaining the team necessary to complete project activities is known as:

- A. Plan Human Resource Management.
- B. Acquire Project Team.
- C. Manage Project Team.
- D. Develop Project Team.

Answer: B

NEW QUESTION 576

- (Topic 3)

A project manager should communicate to stakeholders about resolved project issues by updating the:

- A. project records
- B. project reports
- C. stakeholder notifications
- D. stakeholder register

Answer: C

NEW QUESTION 581

- (Topic 3)

Which type of management focuses on ensuring that projects and programs are reviewed to prioritize resource allocation?

- A. Project
- B. Functional
- C. Program
- D. Portfolio

Answer: D

NEW QUESTION 583

- (Topic 3)

What is a tool and technique used in the Develop Project Management Plan process?

- A. Project management information system (PMIS)
- B. Project charter
- C. Quality assurance
- D. Expert judgment

Answer: D

NEW QUESTION 588

- (Topic 3)

What are the formal and informal policies, procedures, and guidelines that could impact how the project's scope is managed?

- A. Organizational process assets
- B. Enterprise environmental factors
- C. Project management processes
- D. Project scope management plan

Answer: A

NEW QUESTION 593

- (Topic 3)

An input to the Perform Integrated Change Control process is:

- A. expert judgment
- B. seller proposals
- C. the project charter
- D. the project management plan

Answer: D

NEW QUESTION 597

- (Topic 3)

While implementing an approved change, a critical defect was introduced. Removing the defect will delay the product delivery. What is the MOST appropriate approach to managing this situation?

- A. Utilize the change control process.
- B. Crash the schedule to fix the defect.
- C. Leave the defect in and work around it.
- D. Fast-track the remaining development.

Answer: A

NEW QUESTION 601

- (Topic 3)

A change log for communications can be used to communicate to the appropriate stakeholders that there are changes:

- A. To the project management plan.
- B. To the risk register.
- C. In the scope verification processes.
- D. And their impact to the project in terms of time, cost, and risk.

Answer: D

NEW QUESTION 602

- (Topic 3)

What does a CPI value greater than 1.0 indicate?

- A. Cost right at the estimated value
- B. Cost under the estimated value
- C. Cost right at the actual value
- D. Cost over the estimated value

Answer: B

NEW QUESTION 607

- (Topic 3)

Which of the following are documented directions to perform an activity that can reduce the probability of negative consequences associated with project risks?

- A. Recommended corrective actions
- B. Recommended preventive actions
- C. Risk audits
- D. Risk reassessments

Answer: B

NEW QUESTION 609

- (Topic 3)

A car company authorized a project to build more fuel-efficient cars in response to gasoline shortages. With which of the following strategic considerations was this project mainly concerned?

- A. Market demand
- B. Legal requirements
- C. Strategic Opportunity
- D. Technological advance

Answer: A

NEW QUESTION 612

- (Topic 3)

Typical outcomes of a project include:

- A. Products, services, and improvements.
- B. Products, programs, and services.
- C. Improvements, portfolios, and services.
- D. Improvements, processes, and products.

Answer: A

NEW QUESTION 613

- (Topic 3)

Which type of estimating is used to improve the accuracy of an activity's duration?

- A. Analogous
- B. Parametric
- C. Three-point
- D. What-if scenario analysis

Answer: C

NEW QUESTION 618

- (Topic 3)

A project charter is an output of which Process Group?

- A. Executing
- B. Planning
- C. Initiating
- D. Closing

Answer: C

NEW QUESTION 623

- (Topic 3)

A project management office manages a number of aspects including the:

- A. Project scope, schedule, cost, and quality of the products of the work packages.
- B. Central coordination of communication management across projects.
- C. Assignment of project resources to best meet project objectives.
- D. Overall risk, overall opportunity, and interdependencies among projects at the enterprise level.

Answer: D

NEW QUESTION 626

- (Topic 3)

When large or complex projects are separated into distinct phases or subprojects, all of the Process Groups would normally be:

- A. divided among each of the phases or subprojects.
- B. repeated for each of the phases or subprojects.

- C. linked to specific phases or subprojects.
- D. integrated for specific phases or subprojects.

Answer: B

NEW QUESTION 629

- (Topic 3)

Based on the following metrics: EV=\$20,000, AC=\$22,000, and PV=\$28,000, what is the project CV?

- A. -8000
- B. -2000
- C. 2000
- D. 8000

Answer: B

NEW QUESTION 633

- (Topic 3)

Regression analysis, failure mode and effect analysis (FMEA), fault tree analysis (FTA), and trend analysis are examples of which tool or technique?

- A. Expert judgment
- B. Forecasting methods
- C. Earned value management
- D. Analytical techniques

Answer: D

NEW QUESTION 636

- (Topic 3)

An input to Conduct Procurements is:

- A. Independent estimates.
- B. Selected sellers.
- C. Seller proposals.
- D. Resource calendars.

Answer: C

NEW QUESTION 637

- (Topic 3)

What are assigned risk ratings based upon?

- A. Root cause analysis
- B. Assessed probability and impact
- C. Expert judgment
- D. Risk Identification

Answer: B

NEW QUESTION 639

- (Topic 3)

Which Process Group includes the Manage Stakeholder Engagement process?

- A. Executing
- B. Planning
- C. Monitoring and Controlling
- D. Initiating

Answer: A

Explanation:

Reason: Control Stakeholder Engagement is in the Monitoring and Control Process.

NEW QUESTION 644

- (Topic 3)

Activities on the critical path have which type of float?

- A. Zero free float
- B. Zero or negative float
- C. Negative and positive float
- D. Zero or positive float

Answer: B

NEW QUESTION 645

- (Topic 3)

Which of the following is an input of the Define Activities process?

- A. Scope baseline
- B. Milestone list
- C. Resource calendars
- D. Activity list

Answer: A

NEW QUESTION 646

- (Topic 3)

An output of the Create WBS process is:

- A. Scope baseline.
- B. Change requests.
- C. Accepted deliverables.
- D. Variance analysis.

Answer: A

NEW QUESTION 648

- (Topic 3)

What is the lowest level in the Work Breakdown Structure called?

- A. Work Packages
- B. Activities
- C. Schedules
- D. Tasks

Answer: A

NEW QUESTION 653

- (Topic 3)

Managing ongoing production of goods and services to ensure business continues efficiently describes which type of management?

- A. Portfolio
- B. Project
- C. Program
- D. Operations

Answer: D

NEW QUESTION 654

- (Topic 3)

The project has a current cost performance index of 0.80. Assuming this performance will continue, the new estimate at completion is \$1000. What was the original budget at completion for the project?

- A. \$800
- B. \$1000
- C. \$1250
- D. \$1800

Answer: A

NEW QUESTION 659

- (Topic 3)

Which document describes the procurement item in sufficient detail to allow prospective sellers to determine if they are capable of providing the products, services, or results?

- A. Procurement management plan
- B. Procurement statement of work
- C. Request for proposal
- D. Request for quote

Answer: B

NEW QUESTION 662

- (Topic 3)

In which of the following types of organizations is resource availability moderate to high?

- A. Weak matrix
- B. Balanced matrix
- C. Strong matrix
- D. Projectized

Answer: C

NEW QUESTION 664

- (Topic 3)

A project manager at a publishing company decides to initiate the editing phase of the project as soon as each chapter is written. Which type of Sequence Activities tool and technique is involved, considering that there was a start-to-start relationship with a 15-day delay?

- A. Slack
- B. Float
- C. Lag
- D. Lead

Answer: C

NEW QUESTION 665

- (Topic 3)

Project Management Process Groups are linked by:

- A. the outputs they produce
- B. discrete or one-time events
- C. the project management plan
- D. common tools and techniques

Answer: A

NEW QUESTION 668

- (Topic 3)

The technique of subdividing project deliverables into smaller, more manageable components until the work and deliverables are defined to the work package level is called:

- A. a control chart.
- B. baseline.
- C. Create WBS.
- D. decomposition.

Answer: D

NEW QUESTION 670

- (Topic 3)

Which of the following is a tool or technique for the Plan Procurements process?

- A. Bidder conferences
- B. Proposal evaluation techniques
- C. Contract types
- D. Contract change control systems

Answer: C

NEW QUESTION 675

- (Topic 3)

Processes in the Planning Process Group are typically carried out during which part of the project life cycle?

- A. Only once, at the beginning
- B. At the beginning and the end
- C. Once during each phase
- D. Repeatedly

Answer: D

NEW QUESTION 679

- (Topic 3)

A Pareto chart is a specific type of:

- A. control chart
- B. histogram
- C. cause-and-effect diagram
- D. scatter diagram

Answer: B

NEW QUESTION 683

- (Topic 3)

Which of the following are inputs into the Administer Procurements process?

- A. Payment systems, organizational process assets update, and claims administration
- B. Inspections and audits, contract change control system, and project management plan updates
- C. Procurement documents, performance reports, and approved change requests
- D. Project documents, seller proposals, and payment systems

Answer: C

NEW QUESTION 686

- (Topic 3)

Project management processes are:

- A. Static; they must not change across different projects.
- B. Applied globally and across all industry groups.
- C. Discrete elements with well-defined interfaces.
- D. Project phases, applied as required in different projects.

Answer: B

NEW QUESTION 691

- (Topic 3)

A weighting system is a tool for which area of procurement?

- A. Plan contracting
- B. Request seller responses
- C. Select sellers
- D. Plan purchase and acquisition

Answer: C

NEW QUESTION 695

- (Topic 3)

What's budget?

- A. Monitoring & Controlling
- B. Executing
- C. Planning
- D. Initiating

Answer: C

NEW QUESTION 700

- (Topic 3)

The Process Group in which the internal and external stakeholders interact and influence the overall outcome of the project is the:

- A. Monitoring and Controlling Process Group.
- B. Initiating Process Group.
- C. Planning Process Group.
- D. Executing Process Group.

Answer: B

NEW QUESTION 702

- (Topic 3)

Which of the following is an output of the Conduct Procurements process?

- A. Project statement of work
- B. Selected sellers
- C. Risk register updates
- D. Teaming agreements

Answer: B

NEW QUESTION 704

- (Topic 3)

Design of experiments (DOE) should be used during which of the following processes?

- A. Perform Quality Assurance
- B. Total Quality Management
- C. Perform Quality Control
- D. Plan Quality

Answer: D

NEW QUESTION 708

- (Topic 3)

Another name for an Ishikawa diagram is:

- A. cause and effect diagram.
- B. control chart.
- C. flowchart.

D. histogram.

Answer: A

NEW QUESTION 711

- (Topic 3)

The Human Resource Management processes are:

- A. Develop Human Resource Plan, Acquire Project Team, Develop Project Team, and Manage Project Team.
- B. Acquire Project Team, Manage Project Team, Manage Stakeholder Expectations, and Develop Project Team.
- C. Acquire Project Team, Develop Human Resource Plan, Conflict Management, and Manage Project Team.
- D. Develop Project Team, Manage Project Team, Estimate Activity Resources, and Acquire Project Team.

Answer: A

NEW QUESTION 714

- (Topic 3)

The Process Group that involves coordinating people and resources, as well as integrating and performing the activities of the project in accordance with the project management plan is known as:

- A. Initiating.
- B. Planning.
- C. Executing.
- D. Monitoring and Controlling.

Answer: C

NEW QUESTION 715

- (Topic 3)

In which phase of team building activities do team members begin to work together and adjust their work habits and behavior to support the team?

- A. Performing
- B. Storming
- C. Norming
- D. Forming

Answer: C

NEW QUESTION 716

- (Topic 3)

Which schedule development tool and technique produces a theoretical early start date and late start date?

- A. Critical path method
- B. Variance analysis
- C. Schedule compression
- D. Schedule comparison bar charts

Answer: A

NEW QUESTION 717

- (Topic 3)

Which of the following procurement processes results in the awarding of a procurement contract?

- A. Administer Procurements
- B. Close Procurements
- C. Conduct Procurements
- D. Plan Procurements

Answer: C

NEW QUESTION 719

- (Topic 3)

Outputs from constituent processes might be used as:

- A. Inputs to other processes.
- B. Proof of process completion.
- C. Identification of project tasks.
- D. Indicators to eliminate project redundancies.

Answer: A

NEW QUESTION 723

- (Topic 3)

Using the three-point estimating technique, if the most likely duration is four months, the optimistic duration is two months, and the pessimistic duration is one year, how many months is the expected activity duration?

- A. Two
- B. Four
- C. Five
- D. Twelve

Answer: C

NEW QUESTION 724

- (Topic 3)

Which of the following is a means of reaching a group decision in which everyone agrees on a single course of action?

- A. Dictatorship
- B. Majority
- C. Plurality
- D. Unanimity

Answer: D

NEW QUESTION 727

- (Topic 3)

An input to the Manage Project Team process is:

- A. Work performance reports.
- B. Change requests.
- C. Activity resource requirements.
- D. Enterprise environmental factors.

Answer: A

NEW QUESTION 732

- (Topic 3)

Which tools or techniques will a project manager use for Develop Project Team?

- A. Negotiation
- B. Roles and responsibilities
- C. Recognition and rewards
- D. Prizing and promoting

Answer: C

NEW QUESTION 733

- (Topic 3)

Which of the following buffers protects the target finish date from slippage along the critical chain?

- A. Critical buffer
- B. Project buffer
- C. Duration buffer
- D. Feeding buffer

Answer: B

NEW QUESTION 736

- (Topic 3)

Inputs to the Define Activities process include:

- A. Project scope statement, resource calendars, and work performance information.
- B. Scope baseline, enterprise environmental factors, and organizational process assets.
- C. Project scope statement, approved change requests, and WBS dictionary.
- D. Scope baseline, enterprise environmental factors, and activity duration estimates.

Answer: B

NEW QUESTION 738

- (Topic 3)

In which process might you use risk reassessment as a tool and technique?

- A. Qualitative risk analysis
- B. Risk monitoring and control
- C. Monitor and control project work
- D. Risk response planning

Answer: B

NEW QUESTION 740

- (Topic 3)

The three types of estimates that PERT uses to define an approximate range for an activity's cost are:

- A. Parametric, most likely, and analogous.
- B. Least likely, analogous, and realistic.
- C. Parametric, optimistic, and pessimistic.
- D. Most likely, optimistic, and pessimistic.

Answer: D

NEW QUESTION 744

- (Topic 3)

Which type of manager is assigned by the performing organization to lead the team that is responsible for achieving the project objectives?

- A. Program
- B. Functional
- C. Project
- D. Portfolio

Answer: C

NEW QUESTION 748

- (Topic 3)

The run chart created during the Perform Quality Control process on a project is used to show the:

- A. relationship between two variables
- B. data points plotted in the order in which they occur
- C. most common cause of problems in a process
- D. frequency of occurrence

Answer: B

NEW QUESTION 752

- (Topic 3)

Which type of team can be defined as a group of people with a shared goal who fulfill their roles although spending little or no time meeting face to face?

- A. Co-location team
- B. Virtual team
- C. Departmental team
- D. Consultant team

Answer: B

NEW QUESTION 754

- (Topic 3)

An input to the Identify Stakeholders process is:

- A. The project management plan.
- B. The stakeholder register.
- C. Procurement documents.
- D. Stakeholder analysis.

Answer: C

NEW QUESTION 756

- (Topic 3)

A project manager has created an issue log to document issues communicated by project team members during weekly team meetings. This is an input of:

- A. Manage Stakeholder Expectations.
- B. Monitor and Control Risks.
- C. Plan Risk Management.
- D. Report Performance.

Answer: A

NEW QUESTION 761

- (Topic 3)

Issue change requests and adapt approved changes into the project's scope, plans, and environment is an activity included in which of the following project management processes?

- A. Direct and Manage Project Execution
- B. Monitor and Control Project Work
- C. Perform Integrated Change Control
- D. Monitor and Control Risks

Answer: A

NEW QUESTION 764

- (Topic 3)

Which of the following strategic considerations often results in project authorization?

- A. Customer requests and/or issue resolution
- B. Stakeholder expectations and/or strategic opportunity (business need)
- C. Technological advancement and/or senior executive request
- D. Market demand and/or legal requirements

Answer: D

NEW QUESTION 769

- (Topic 3)

What is the tool and technique used to request seller responses?

- A. Procurement documents
- B. Expert judgment
- C. Bidder conferences
- D. Contract types

Answer: C

NEW QUESTION 771

- (Topic 3)

Which grid shows which resources are tied to work packages?

- A. Work breakdown structure (WBS)
- B. Responsibility assignment matrix (RAM)
- C. Project assignment chart
- D. Personnel assignment matrix

Answer: B

NEW QUESTION 775

- (Topic 3)

Which of the following is an output of Direct and Manage Project Execution?

- A. Project management plan
- B. Change request status updates
- C. Organizational process assets updates
- D. Work performance information

Answer: D

NEW QUESTION 779

- (Topic 3)

Which stakeholder communicates with higher levels of management to gather organizational support and promote project benefits?

- A. Portfolio manager
- B. Project sponsor
- C. Project manager
- D. Project management office

Answer: B

NEW QUESTION 780

- (Topic 3)

Analytical techniques are a tool and technique of which process in Project Procurement Management?

- A. Plan Procurement Management
- B. Control Procurements
- C. Conduct Procurements
- D. Close Procurements

Answer: C

NEW QUESTION 783

- (Topic 3)

Which tool within the Perform Quality Control process identifies whether or not a process has a predictable performance?

- A. Cause and effect diagram
- B. Control charts
- C. Pareto chart
- D. Histogram

Answer: B

NEW QUESTION 784

- (Topic 3)

To which process is work performance information an input?

- A. Contract administration
- B. Direction and management of project execution
- C. Create WBS
- D. Qualitative risk analysis

Answer: A

NEW QUESTION 785

- (Topic 3)

Activity Duration	Days	Predecessor
A	5	
B	2	
C	4	A
D	2	B,C
E	5	D

Which of the following is the correct network diagram for the table?

- A. Begin-A-C-D-E-End-B-D
- B. Begin-A-B-C-D-E-End
- C. Begin-A-B-D-E-End A-C-D
- D. Begin-A-C-D-E-End-B-C

Answer: A

NEW QUESTION 790

- (Topic 3)

Which input provides suppliers with a clear set of goals, requirements, and outcomes?

- A. Procurement statement of work
- B. Purchase order
- C. Source selection criteria
- D. Bidder conference

Answer: A

NEW QUESTION 791

- (Topic 3)

The integrative nature of project management requires which Process Group to interact with the other Process Groups?

- A. Planning
- B. Executing
- C. Monitoring and Controlling
- D. Project Management

Answer: C

NEW QUESTION 795

- (Topic 3)

Variance and trend analysis is a tool and technique used in which process?

- A. Perform Qualitative Risk Analysis
- B. Perform Quantitative Risk Analysis
- C. Control Risks
- D. Plan Risk Responses

Answer: C

NEW QUESTION 798

- (Topic 3)

The Plan Procurements process includes documenting project purchasing decisions and what other steps?

- A. Specifying the approach and identifying potential sellers
- B. Specifying the approach and selecting a seller
- C. Identifying potential sellers and obtaining seller responses
- D. Specifying the approach and managing procurement relationships

Answer: A

NEW QUESTION 799

- (Topic 3)

Which quality tool incorporates the upper and lower specification limits allowed within an agreement?

- A. Control chart
- B. Flowchart
- C. Checksheet
- D. Pareto diagram

Answer: A

NEW QUESTION 800

- (Topic 3)

The project manager at an organization has just realized that some of the engineering staff has been allocated to project Y and will not be available to finish task X. The project manager has also discovered that at the current pace, it will not be possible to complete the project on time. Due to cost constraints, hiring more work force is not a viable option. Which tools are at the manager's disposal?

- A. Resource leveling and fast tracking
- B. Fast tracking and crashing
- C. Crashing and applying leads and lags
- D. Scheduling tools and applying leads and lags

Answer: A

NEW QUESTION 805

- (Topic 3)

Which of the following is developed from the project scope baseline and defines only that portion of the project scope that is to be included within a related contract?

- A. Product scope description
- B. Procurement statement of work
- C. Project schedule
- D. Work breakdown structure (WBS)

Answer: B

NEW QUESTION 806

- (Topic 3)

Which of the following can be used as an input for Define Scope?

- A. Product analysis
- B. Project charter
- C. Scope baseline
- D. Project scope statement

Answer: B

NEW QUESTION 808

- (Topic 3)

Which tool and technique is used in Conduct Procurements?

- A. Teaming agreements
- B. Expert judgment
- C. Bidder conferences
- D. Contract types

Answer: C

NEW QUESTION 810

- (Topic 3)

Activity resource requirements and the resource breakdown structure (RBS) are outputs of which Project Time Management process?

- A. Control Schedule
- B. Define Activities
- C. Develop Schedule
- D. Estimate Activity Resources

Answer: D

NEW QUESTION 815

- (Topic 3)

When managing a project team, what helps to reduce the amount of conflict?

- A. Clear role definition
- B. Negotiation
- C. Risk response planning
- D. Team member replacement

Answer: A

NEW QUESTION 817

- (Topic 3)

The correct equation for schedule variance (SV) is earned value:

- A. minus planned value [EV - PV].
- B. minus actual cost [EV - AC].
- C. divided by planned value [EV/PV],
- D. divided by actual cost [EV/AC].

Answer: A

NEW QUESTION 821

- (Topic 3)

The definition of operations is a/an:

- A. organizational function performing the temporary execution of activities that produce the same product or provide repetitive service.
- B. temporary endeavor undertaken to create a unique product, service, or result.
- C. organization that provides oversight for an administrative area.
- D. organizational function performing the ongoing execution of activities that produce the same product or provide repetitive service.

Answer: D

NEW QUESTION 823

- (Topic 3)

Approved change requests, approved corrective actions, and updates to organizational process assets are all outputs of which project management process?

- A. Risk response planning
- B. Manage stakeholders
- C. Scope definition
- D. Performance reporting

Answer: B

NEW QUESTION 828

- (Topic 3)

In complex projects/ initiating processes should be completed:

- A. Within a work package.
- B. In each phase of the project.
- C. To estimate schedule constraints.
- D. To estimate resource allocations.

Answer: B

NEW QUESTION 832

- (Topic 3)

A project manager requesting industry groups and consultants to recommend project intervention is relying on:

- A. Communication models.
- B. Stakeholder participation.
- C. Expert judgment
- D. Enterprise environmental factors.

Answer: C

NEW QUESTION 837

- (Topic 4)

Which process involves aggregating the estimated costs of the individual schedule activities or work packages?

- A. Estimate Costs
- B. Estimate Activity Resources
- C. Control Costs

D. Determine Budget

Answer: B

NEW QUESTION 841

- (Topic 4)

An output of Control Schedule is:

- A. A project schedule network diagram
- B. A schedule management plan
- C. Schedule data
- D. Schedule forecasts

Answer: D

NEW QUESTION 846

- (Topic 4)

Which technique is commonly used for the Quantitative Risk Analysis activity?

- A. Brainstorming
- B. Strategies for Opportunities
- C. Decision Tree Analysis
- D. Risk Data Quality Assessment

Answer: C

NEW QUESTION 849

- (Topic 4)

The purpose of the Project Communications Management Knowledge Area is to:

- A. Monitor and control communications throughout the entire project life cycle.
- B. Maintain an optimal flow of information among all project participants.
- C. Develop an appropriate approach for project communications.
- D. Ensure timely and appropriate collection of project information.

Answer: D

NEW QUESTION 851

- (Topic 4)

Which tool or technique is used in the Estimate Costs process?

- A. Acquisition
- B. Earned value management
- C. Vendor bid analysis
- D. Forecasting

Answer: C

NEW QUESTION 856

- (Topic 4)

In Project Cost Management, which input is exclusive to the Determine Budget process?

- A. Scope baseline
- B. Organizational process assets
- C. Project schedule
- D. Resource calendars

Answer: D

NEW QUESTION 860

- (Topic 4)

When cost variance is negative and schedule variance is positive, the project is:

- A. under budget and behind schedule.
- B. over budget and ahead of schedule.
- C. on schedule.
- D. complete; all planned values have been earned.

Answer: B

NEW QUESTION 861

- (Topic 4)

An input to the Control Quality process is:

- A. Activity attributes

- B. Quality control measurements
- C. Enterprise environmental factors
- D. Deliverables

Answer: D

NEW QUESTION 865

- (Topic 4)

What cost control technique is used to compare actual project performance to planned or expected performance?

- A. Cost aggregation
- B. Trend analysis
- C. Forecasting
- D. Variance analysis

Answer: D

NEW QUESTION 867

- (Topic 4)

The iterative and interactive nature of the Process Groups creates the need for the processes in which Knowledge Area?

- A. Project Communications Management
- B. Project Integration Management
- C. Project Risk Management
- D. Project Scope Management

Answer: B

NEW QUESTION 871

- (Topic 4)

Which of the following outputs from the Schedule Control process aids in the communication of SV, SPI or any performance status to stakeholders?

- A. Performance organizations
- B. Schedule baselines
- C. Performance measurements
- D. Change requests

Answer: C

NEW QUESTION 873

- (Topic 4)

What are the key components of the communication model?

- A. Encode, message and feedback-message, medium, noise, and decode
- B. Encode, messaging technology, medium, noise, and decode
- C. Sender, message and feedback-message, medium, noise, and translate
- D. Receiver, message and feedback-message, medium, noise, and decode

Answer: A

NEW QUESTION 876

- (Topic 4)

One of the fundamental tenets of modern quality management states that quality is:

- A. planned, designed, and built in.
- B. planned, designed, and inspected in.
- C. built in, created, and reviewed.
- D. built in, created, and standardized.

Answer: A

NEW QUESTION 880

- (Topic 4)

Which tool or technique is used in the Perform Integrated Change Control process?

- A. Decomposition
- B. Modeling techniques
- C. Resource optimization
- D. Meetings

Answer: D

NEW QUESTION 885

- (Topic 4)

On what is project baseline development established?

- A. Approved product requirements
- B. Estimated project cost and schedule
- C. Actual project cost and schedule
- D. Revised project cost and schedule

Answer: B

NEW QUESTION 887

- (Topic 4)

Processes in the Initiating Process Group may be completed at the organizational level and be outside of the project's:

- A. Level of control.
- B. Communication channels.
- C. Scope.
- D. Strategic alignment.

Answer: A

NEW QUESTION 889

- (Topic 4)

The contract in which the seller is reimbursed for all allowable costs for performing the contract work and then receives a fee based upon achieving certain performance objectives is called a:

- A. Cost Plus Incentive Fee Contract (CPIF).
- B. Cost Plus Fixed Fee Contract (CPFF).
- C. Fixed Price Incentive Fee Contract (FPIF).
- D. Time and Material Contract (T&M).

Answer: A

NEW QUESTION 891

- (Topic 4)

An effective technique for resolving conflict that incorporates multiple viewpoints from differing perspectives to achieve consensus and commitment is:

- A. smooth/accommodate.
- B. force/direct,
- C. collaborate/problem solve,
- D. compromise/reconcile.

Answer: C

NEW QUESTION 892

- (Topic 4)

The Administer Procurements process is in which of the following Project Management Process Groups?

- A. Planning
- B. Monitoring and Controlling
- C. Initiating
- D. Executing

Answer: B

NEW QUESTION 894

- (Topic 4)

Which process involves aggregating the estimated costs of the individual schedule activities or work packages?

- A. Cost baseline
- B. Cost forecasting
- C. Cost variance
- D. Cost budgeting

Answer: D

NEW QUESTION 897

- (Topic 4)

What is the term assigned to products or services having the same functional use but different technical characteristics?

- A. Scope
- B. Quality
- C. Specification
- D. Grade

Answer: D

NEW QUESTION 902

- (Topic 4)

The ways in which the roles and responsibilities, reporting relationships, and staffing management will be addressed and structured within a project is described in the:

- A. Human resource management plan.
- B. Activity resource requirements.
- C. Personnel assessment tools,
- D. Multi-criteria decision analysis.

Answer: A

NEW QUESTION 907

- (Topic 4)

Schedule milestones and a predefined budget are examples of:

- A. Project constraints.
- B. Requirements documentation.
- C. Organizational process assets.
- D. Activity cost estimates.

Answer: A

NEW QUESTION 911

- (Topic 4)

Which process is responsible for monitoring the status of the project and product scope and managing changes to the scope baseline?

- A. Variance Analysis
- B. Define Scope
- C. Verify Scope
- D. Control Scope

Answer: D

NEW QUESTION 916

- (Topic 4)

Which process occurs within the Monitoring and Controlling Process Group?

- A. Cost Control
- B. Quality Planning
- C. Quantitative Risk Analysis
- D. Cost Budgeting

Answer: A

NEW QUESTION 919

- (Topic 4)

The key benefit of the Monitoring and Controlling Process Group is the ability to:

- A. establish and manage project communication channels, both external and internal to the project team.
- B. influence the stakeholders that want to circumvent integrated change control so that their changes are implemented.
- C. monitor the ongoing project team against the team performance assessments and the project performance baseline.
- D. observe and measure project performance regularly and consistently to identify variances from the project management plan.

Answer: D

NEW QUESTION 920

- (Topic 4)

Which standard examines an enterprise's project management process capabilities?

- A. PMBOK Guide
- B. The Standard for Program Management
- C. Organizational Project Management Maturity Model "OPMJ"
- D. The Standard for Portfolio Management

Answer: C

NEW QUESTION 923

- (Topic 4)

Which schedule development technique modifies the project schedule to account for limited resources?

- A. Human resource planning
- B. Fast tracking
- C. Critical chain method
- D. Rolling wave planning

Answer: C

NEW QUESTION 925

- (Topic 4)

Which key interpersonal skill of a project manager is defined as the strategy of sharing power and relying on interpersonal skills to convince others to cooperate toward common goals?

- A. Collaboration
- B. Negotiation
- C. Decision making
- D. Influencing

Answer: D

NEW QUESTION 928

- (Topic 4)

What is the difference between the critical path and the critical chain?

- A. Scope changes
- B. Resource limitations
- C. Risk analysis
- D. Quality audits

Answer: B

NEW QUESTION 930

- (Topic 4)

Which action is included in the Control Costs process?

- A. Identify how the project costs will be planned, structured, and controlled
- B. Determine policies, objectives, and responsibilities to satisfy stakeholder needs
- C. Develop an approximation of the monetary resources needed to complete project activities
- D. Monitor cost performance to isolate and understand variances from the approved cost baseline

Answer: D

NEW QUESTION 935

- (Topic 4)

Which type of dependency used in the Sequence Activities process is sometimes referred to as preferred logic, preferential logic, or soft logic?

- A. Internal
- B. External
- C. Discretionary
- D. Mandatory

Answer: C

NEW QUESTION 939

- (Topic 4)

Using the following data, what is the Schedule Performance Index (SPI)? EV= \$500 PV= \$750 AC= \$1000 BAC= \$1200

- A. 0.67
- B. 1.5
- C. 0.75
- D. 0.5

Answer: A

NEW QUESTION 944

- (Topic 4)

During which process does the project team receive bids and proposals?

- A. Conduct Procurements
- B. Plan Procurements
- C. Estimate Costs
- D. Control Budget

Answer: A

NEW QUESTION 948

- (Topic 4)

Which input may influence quality assurance work and should be monitored within the context of a system for configuration management?

- A. Work performance data
- B. Project documents
- C. Scope baseline
- D. Requirements documentation

Answer:

B

NEW QUESTION 949

- (Topic 4)

Outputs of the Control Communications process include:

- A. expert judgment and change requests
- B. work performance information and change requests
- C. project management plan updates and work performance information
- D. issue logs and organizational process assets updates

Answer: B

NEW QUESTION 951

- (Topic 4)

When a control chart is used to monitor performance of a process, which of the following will be set by the project manager and the appropriate stakeholders to reflect the point(s) at which corrective action will be taken to prevent exceeding the specification limits?

- A. Upper and lower control limits
- B. Upper and lower specification limits
- C. Process mean
- D. Data points

Answer: A

NEW QUESTION 954

- (Topic 4)

As part of a mid-project evaluation, your project sponsor has asked you to provide a forecast of total project cost. You should calculate the forecast using which of the following methods?

- A. BAC
- B. EAC
- C. ETC
- D. WBS

Answer: B

NEW QUESTION 958

- (Topic 4)

Which technique is utilized in the Schedule Control process?

- A. Performance Measure
- B. Baseline Schedule
- C. Schedule Comparison
- D. Variance Analysis

Answer: D

NEW QUESTION 960

- (Topic 4)

Which Develop Schedule tool and technique produces a theoretical early start date and late start date?

- A. Critical path method
- B. Variance analysis
- C. Schedule compression
- D. Schedule comparison bar charts

Answer: A

NEW QUESTION 964

- (Topic 4)

When does Monitor and Control Risks occur?

- A. At project initiation
- B. During work performance analysis
- C. Throughout the life of the project
- D. At project milestones

Answer: C

NEW QUESTION 969

- (Topic 4)

The project budget is set at \$150,000. The project duration is planned to be one year. At the completion of Week 16 of the project, the following information is collected: Actual cost

= \$50,000, Plan cost = \$45,000, Earned value = \$40,000. What is the cost performance index?

- A. 0.8
- B. 0.89
- C. 1.13
- D. 1.25

Answer: A

NEW QUESTION 972

- (Topic 4)

Forecasts, requested changes, recommended corrective actions, and organizational process asset updates are all outputs of which process?

- A. Risk response planning
- B. Risk monitoring and control
- C. Performance reporting
- D. Manage stakeholders

Answer: B

NEW QUESTION 974

- (Topic 4)

Which type of estimating can produce higher levels of accuracy, depending upon the sophistication and underlying data built into the model?

- A. Bottom-up
- B. Three-point
- C. Parametric
- D. Analogous

Answer: C

NEW QUESTION 977

- (Topic 4)

The chart below is an example of a:

ID	Requirements Description	Project Objectives	WBS Deliverables	Product Design	Product Development	Test Cases
001						
002						
003						

- A. Responsibility assignment matrix (RAM)
- B. Work breakdown structure (WBS)
- C. RACI chart
- D. Requirements traceability matrix

Answer: D

NEW QUESTION 980

- (Topic 4)

Plan Schedule Management is a process in which Knowledge Area?

- A. Project Scope Management
- B. Project Human Resource Management
- C. Project Integration Management
- D. Project Time Management

Answer: D

NEW QUESTION 985

- (Topic 4)

Change requests are processed for review and disposition according to which process?

- A. Control Quality
- B. Control Scope
- C. Monitor and Control Project Work
- D. Perform Integrated Change Control

Answer: D

NEW QUESTION 988

- (Topic 4)

Which of the following schedule network analysis techniques is applied when a critical path method calculation has been completed and resources availability is critical?

- A. Applying calendars
- B. Resource leveling
- C. Resource planning
- D. Resource conflict management

Answer: B

NEW QUESTION 993

- (Topic 4)

Which earned value management (EVM) metric is a measure of the cost efficiency of budgeted resources expressed as a ratio of earned value (EV) to actual cost (AC) and is considered a critical EVM metric?

- A. Cost variance (CV)
- B. Cost performance index (CPI)
- C. Budget at completion (BAC)
- D. Variance at completion (VAC)

Answer: B

NEW QUESTION 998

- (Topic 4)

What is the primary benefit of meeting quality requirements?

- A. Quality metrics
- B. Less rework
- C. Quality control measurements
- D. Benchmarking

Answer: B

NEW QUESTION 999

- (Topic 4)

Which of the following are the components of the scope baseline?

- A. Project charter, project scope statement, and work breakdown structure (WBS)
- B. Project charter, project management plan, and plan procurement
- C. Project scope statement, work breakdown structure (WBS), and WBS dictionary
- D. Project management plan, plan procurement, and contract administration

Answer: C

NEW QUESTION 1004

- (Topic 4)

Cost variance (CV) is equal to earned value:

- A. Minus actual cost [EV - AC].
- B. Minus planned value [EV - PV].
- C. Divided by actual cost [EV/AC].
- D. Divided by planned value [EV/PV].

Answer: A

NEW QUESTION 1005

- (Topic 4)

An output of the Develop Project Team process is:

- A. Organizational process assets.
- B. Enterprise environmental factors updates.
- C. Project staff assignments.
- D. Organizational charts and position descriptions.

Answer: B

NEW QUESTION 1008

- (Topic 4)

The three processes of Project Cost Management are:

- A. Estimate Costs, Control Schedule, and Control Costs.
- B. Estimate Costs, Determine Budget, and Estimate Activity Resources.
- C. Determine Budget, Control Schedule, and Estimate Activity Resources.
- D. Estimate Costs, Determine Budget, and Control Costs.

Answer: D

NEW QUESTION 1010

- (Topic 4)

What is the name of the statistical method that helps identify which factors may influence specific variables of a product or process under development or in production?

- A. Failure modes and effects analysis
- B. Design of experiments
- C. Quality checklist
- D. Risk analysis

Answer: B

NEW QUESTION 1015

- (Topic 4)

An input of the Plan Procurement Management process is:

- A. Make-or-buy decisions.
- B. Activity cost estimates.
- C. Seller proposals.
- D. Procurement documents.

Answer: B

NEW QUESTION 1018

- (Topic 4)

Which output is the approved version of the time-phased project budget?

- A. Resource calendar
- B. Scope baseline
- C. Trend analysis
- D. Cost baseline

Answer: D

NEW QUESTION 1021

- (Topic 4)

A tool or technique used during the Administer Procurements process is:

- A. Expert judgment.
- B. Bidder conference.
- C. Procurement negotiation.
- D. Performance reporting.

Answer: D

NEW QUESTION 1023

- (Topic 4)

Budgets reserved for unplanned changes to project scope and cost are:

- A. Contingency reserves.
- B. Management reserves.
- C. Authorized budgets.
- D. Cost baselines.

Answer: B

NEW QUESTION 1025

- (Topic 4)

The Perform Integrated Change Control process occurs in which Process Group?

- A. Initiating
- B. Executing
- C. Monitoring and Controlling
- D. Planning

Answer: C

NEW QUESTION 1030

- (Topic 4)

The following chart contains information about the tasks in a project.

Task	PV	AC	EV
1	10,000	10,000	10,000
2	10,000	8,000	10,000
3	10,000	8,000	8,000
4	9,000	12,000	10,000
5	10,000	12,000	12,000
6	10,000	10,000	12,000
7	12,000	12,000	10,000
8	10,000	8,000	9,000
9	12,000	10,000	11,000

Based on the chart, what is the schedule performance index (SPI) for Task 4?

- A. 0.83
- B. 0.9
- C. 1.11
- D. 1.33

Answer: C

NEW QUESTION 1035

- (Topic 4)

A measure of cost performance that is required to be achieved with the remaining resources in order to meet a specified management goal and is expressed as the ratio of the cost needed for finishing the outstanding work to the remaining budget is known as the:

- A. budget at completion (BAC)
- B. earned value management (EVM)
- C. to-complete performance index
- D. cost performance index

Answer: C

NEW QUESTION 1036

- (Topic 4)

When painting a bedroom, preparing the walls can be done while the paint is being chosen. This is an example of a:

- A. lead
- B. lag
- C. mandatory dependency
- D. internal dependency

Answer: A

NEW QUESTION 1041

- (Topic 4)

Which baselines make up the performance measurement baseline?

- A. Scope baseline, cost baseline, and schedule baseline

- B. Scope baseline, project management baseline, and quality baseline
- C. Cost baseline, schedule baseline, and risk baseline
- D. Cost baseline, project management baseline, and schedule baseline

Answer: A

NEW QUESTION 1044

- (Topic 4)

What quality control tool graphically represents how various elements of a system interrelate?

- A. Control chart
- B. Flowchart
- C. Run chart
- D. Pareto chart

Answer: B

NEW QUESTION 1046

- (Topic 4)

Which of the following tools and techniques is used to estimate cost?

- A. Budget forecast
- B. Variance analysis
- C. Activity cost estimate
- D. Three-point estimate

Answer: D

NEW QUESTION 1051

- (Topic 4)

An input to the Plan Procurement Management process is:

- A. Source selection criteria.
- B. Market research.
- C. A stakeholder register.
- D. A records management system.

Answer: C

NEW QUESTION 1052

- (Topic 4)

The following chart contains information about the tasks in a project.

Task	PV	AC	EV
1	10,000	10,000	10,000
2	10,000	8,000	10,000
3	10,000	8,000	8,000
4	9,000	12,000	10,000
5	10,000	12,000	12,000
6	10,000	10,000	12,000
7	12,000	12,000	10,000
8	10,000	8,000	9,000
9	12,000	10,000	11,000

Based on the chart, what is the cost performance index (CPI) for Task 2?

- A. 0.8
- B. 1
- C. 1.25
- D. 1.8

Answer: C

NEW QUESTION 1054

- (Topic 4)

Which term describes an assessment of correctness?

- A. Accuracy
- B. Precision
- C. Grade
- D. Quality

Answer: A

NEW QUESTION 1055

- (Topic 4)

Which is one of the major outputs of Sequence Activities?

- A. Responsibility assignment matrix (RAM)
- B. Work breakdown structure (WBS) update
- C. Project schedule network diagram
- D. Mandatory dependencies list

Answer: C

NEW QUESTION 1060

- (Topic 4)

Which input to the Manage Stakeholder Engagement process is used to document changes that occur during the project?

- A. Issue log
- B. Change log

- C. Expert judgment
- D. Change requests

Answer: B

NEW QUESTION 1064

- (Topic 4)

Specification of both the deliverables and the processes is the focus of:

- A. Change control
- B. Configuration control
- C. Project monitoring and control
- D. Issue control

Answer: A

NEW QUESTION 1069

- (Topic 4)

A logical relationship in which a successor activity cannot start until a predecessor activity has finished is known as:

- A. Start-to-start (SS).
- B. Start-to-finish (SF).
- C. Finish-to-start (FS).
- D. Finish-to-finish (FF).

Answer: C

NEW QUESTION 1071

- (Topic 5)

An input to Close Project or Phase is:

- A. Accepted deliverables,
- B. Final products or services,
- C. Document updates,
- D. Work performance information.

Answer: A

NEW QUESTION 1076

- (Topic 5)

At the completion of a project, a report is prepared that details the outcome of the research conducted on a global trend during the project. Which item did this project create?

- A. Result
- B. Product
- C. Service
- D. Improvement

Answer: A

NEW QUESTION 1077

- (Topic 5)

Which conflict resolution technique searches for solutions that bring some degree of satisfaction to all parties in order to temporarily or partially resolve the conflict?

- A. Force/direct
- B. Withdraw/avoid
- C. Compromise/reconcile
- D. Collaborate/problem solve

Answer: C

NEW QUESTION 1081

- (Topic 5)

The completion of the project scope is measured against the:

- A. requirements documentation.
- B. project scope statement.
- C. project management plan.
- D. work performance measurements.

Answer: C

NEW QUESTION 1085

- (Topic 5)

Which of the following is a statistical concept that calculates the average outcome when the future includes scenarios that may or may not happen?

- A. Sensitivity analysis
- B. Three-point estimate
- C. Modeling and simulation
- D. Expected monetary value analysis

Answer: D

NEW QUESTION 1090

- (Topic 5)

When calculating the cost of quality (COQ) for a product or service, money spent for cost of conformance would include the areas of:

- A. training, testing, and warranty work.
- B. equipment, rework, and scrap.
- C. training, document processes, and inspections.
- D. inspections, rework, and warranty work.

Answer: C

NEW QUESTION 1094

- (Topic 5)

Which of the following is an example of the simplest fixed-price contract?

- A. Purchase requisition
- B. Purchase order
- C. Verbal agreement
- D. Request for quote

Answer: B

NEW QUESTION 1095

- (Topic 5)

Sensitivity analysis is typically displayed as a/an:

- A. Decision tree diagram.
- B. Tornado diagram.
- C. Pareto diagram.
- D. Ishikawa diagram.

Answer: B

NEW QUESTION 1098

- (Topic 5)

Those who enter into a contractual agreement to provide services necessary for a project are:

- A. buyers
- B. sellers
- C. business partners
- D. product users

Answer: B

NEW QUESTION 1100

- (Topic 5)

Lessons learned are created and project resources are released in which Process Group?

- A. Planning
- B. Executing
- C. Closing
- D. Initiating

Answer: C

NEW QUESTION 1102

- (Topic 5)

During which process does a project manager review all prior information to ensure that all project work is completed and that the project has met its objectives?

- A. Monitor and Control Project Work
- B. Perform Quality Assurance
- C. Close Project or Phase
- D. Control Scope

Answer: C

NEW QUESTION 1105

- (Topic 5)

A project has a current cost performance index (CPI) of 1.25. To date, US\$10,000 have been spent on performing the project work. What is the earned value of the work completed to date?

- A. US\$5000
- B. US\$9500
- C. US\$10,000
- D. US\$12,500

Answer: D

NEW QUESTION 1110

- (Topic 5)

Types of internal failure costs include:

- A. inspections.
- B. equipment and training.
- C. lost business.
- D. reworking and scrapping.

Answer: D

NEW QUESTION 1114

- (Topic 5)

During which process would you obtain stakeholders' formal acceptance of the completed project scope?

- A. Quality control
- B. Scope verification
- C. Scope control
- D. Close project

Answer: B

NEW QUESTION 1117

- (Topic 5)

If the most likely duration of an activity is five weeks, the best-case duration is two weeks, and the worst-case duration is 14 weeks, how many weeks is the expected duration of the activity?

- A. One
- B. Five
- C. Six
- D. Seven

Answer: C

NEW QUESTION 1122

- (Topic 5)

At the end of the project, what will be the value of SV?

- A. Positive
- B. Zero
- C. Negative
- D. Greater than one

Answer: B

NEW QUESTION 1127

- (Topic 5)

An example of a group decision-making technique is:

- A. nominal group technique
- B. majority
- C. affinity diagram
- D. multi-criteria decision analysis

Answer: A

NEW QUESTION 1130

- (Topic 5)

Which type of dependency is legally or contractually required or inherent in the nature of work and often involves physical limitations?

- A. Mandatory
- B. Discretionary
- C. Internal
- D. External

Answer: A

NEW QUESTION 1133

- (Topic 5)

Which tools or techniques are used during the Close Project or Phase process?

- A. Reserve analysis and expert judgment
- B. Facilitation techniques and meetings
- C. Expert judgment and analytical techniques
- D. Performance reviews and meetings

Answer: C

NEW QUESTION 1136

- (Topic 5)

Which of the following is a conflict resolution technique that emphasizes areas of agreement rather than areas of difference?

- A. Compromising
- B. Collaborating
- C. Smoothing
- D. Problem Solving

Answer: C

NEW QUESTION 1137

- (Topic 5)

Sharing good practices introduced or implemented in similar projects in the organization and/or industry is an example of:

- A. quality audits
- B. process analysis
- C. statistical sampling
- D. benchmarking

Answer: A

NEW QUESTION 1139

- (Topic 5)

Which of the following characteristics are found in a functional organizational structure?

- A. Little or no project manager authority, little or no resource availability, and the functional manager controls the project budget
- B. Limited project manager authority, limited resource availability, and a part-time project manager's role
- C. Low to moderate project manager authority, low to moderate resource availability, and a full-time project manager's role
- D. High to almost total project manager authority, high to almost total resource availability, and full-time project management administrative staff

Answer: A

NEW QUESTION 1144

.....

Thank You for Trying Our Product

* 100% Pass or Money Back

All our products come with a 90-day Money Back Guarantee.

* One year free update

You can enjoy free update one year. 24x7 online support.

* Trusted by Millions

We currently serve more than 30,000,000 customers.

* Shop Securely

All transactions are protected by VeriSign!

100% Pass Your PMP Exam with Our Prep Materials Via below:

<https://www.certleader.com/PMP-dumps.html>