

## Exam Questions 200-901

Developing Applications and Automating Workflows using Cisco Core Platforms (DEVASC)

<https://www.2passeasy.com/dumps/200-901/>



## NEW QUESTION 1

Refer to the exhibit.

**URL:** https://<ASA\_IP>/api/access/global/rules  
**Method:** POST  
**Payload:**

```
{
  "destinationAddress": {
    "kind": "IPv4Address",
    "value": "10.1.1.1"
  },
  "remarks": [ ],
  "active": true
  "permit": true,
  "sourceAddress": {
    "kind": "IPv4Address",
    "value": "192.168.1.1"
  }
}
```

**Response Status Code:** 400 Bad Request

```
{
  "messages": [
    {
      "level": "Error",
      "code": "JSON-PARSE-ERROR",
      "details": "Unexpected character ('\"' (code 34)):"
    }
  ]
}
```

Which JSON is equivalent to the XML –encoded data?

### List Messages

Lists all messages in a room. Each message will include content attachments if present.

The list sorts the messages in descending order by creation date.

Long result sets will be split into [pages](#).

**GET** /v1/messages

### Query Parameters

**roomId**  
string **Required**  
List messages in a room, by ID.

**mentionedPeople**  
array  
List messages with these people mentioned, by ID.  
Use me as a shorthand for the current API user.

**before**  
string  
List messages sent before a date and time.

**beforeMessage**  
string  
List messages sent before a message, by ID.

**max**  
number  
Limit the maximum number of messages in the response.  
Default: 50

**Try it** **Example**

**GET** /v1/messages(?roomId,mentionedPeople,before,beforeMessage)

### Header

Authorization ☒ Use personal access token

**Bearer** .....

*This limited-duration personal access token is hidden for your security.*

### Query Parameters

**roomId**  
**Required**  
e.g. Y2lzY29zcGFyazovL3VzL1JPT00vYmJj

**mentionedPeople**  
e.g. Y2lzY29zcGFyazovL3VzL1BFT1BMRS6

**before**  
e.g. 2016-04-2Tf:9:01:55:966Z

**beforeMessage**  
e.g. Y2lzY29zcGFyazovL3VzL1FU1NBROL

**max**  
e.g. 100

**Run**

```
bash-3.2$ curl -H "Content-Type: application/json" -H "Authorization:
Fj2zzzykEa091ic9GK2j8LtE1Hk1Hk1H6oRHPQdw1Pat60i7ndtHHnWzL2b5pqMg14Kk_B9EI59isacLy7-
NarA02n9H-tGgt-SxQ39iDejgcs" -i -X POST -d "{ \"roomId\":
\"Y2geK53sjEknosrc7SwQ5ZGL99pHgiuScB7DfNvUstr8Xx4wDKLiPORcEkryAnM3QmK9LQZsP0G4\"
, \"text\": \"test2\" }" https://api.ciscospark.com/v1/messages

HTTP/1.1 401 Unauthorized
Via: 1.1 linker
TrackingID: ROUTER_5E0FDC8C-EB6F-01BB-00EF-806BF1BD00EF
Date: Sat, 04 Jan 2020 00:30:04 GMT
Server: Redacted
Content-Length: 267
Content-Type: application/json
Strict-Transport-Security: max-age=63072000; includeSubDomains; preload

{"message": "The request requires a valid access token set in the Authorization request
header.", "errors": [{"description": "The request requires a valid access token set in the
Authorization request
header."}], "trackingId": "ROUTER_5E0FDC8C-EB6F-01BB-00EF-806BF1BD00EF"}

bash-3.2$
```

- A. Option A
- B. Option B
- C. Option C
- D. Option D

Answer: A

#### NEW QUESTION 2

Which REST architectural constraint indicates that no client context should be stored on the server between requests?

- A. stateless
- B. uniform interface
- C. cacheable
- D. client-server

Answer: A

#### NEW QUESTION 3

Which two use cases are supported by Meraki APIs? (Choose two.)

- A. Retrieve live streams from a Meraki Camera.
- B. Build a custom Captive Portal for Mobile Apps.
- C. Configure network devices via the Dashboard API.
- D. Build location-aware apps from Wi-Fi and LoRaWAN devices.
- E. Deploy applications onto the devices.

Answer: BC

#### NEW QUESTION 4

Fill in the blanks to complete the python script to request a service ticket using the APIC-EM rest API for the user "devnetuser".

The focus is on advanced planning and outcome prediction.	Agile
Users receive functional software and can provide feedback after the product is available.	
The timeline is followed and feedback is gathered before product completion.	
Developers respond to requirement changes throughout the development process.	Waterfall

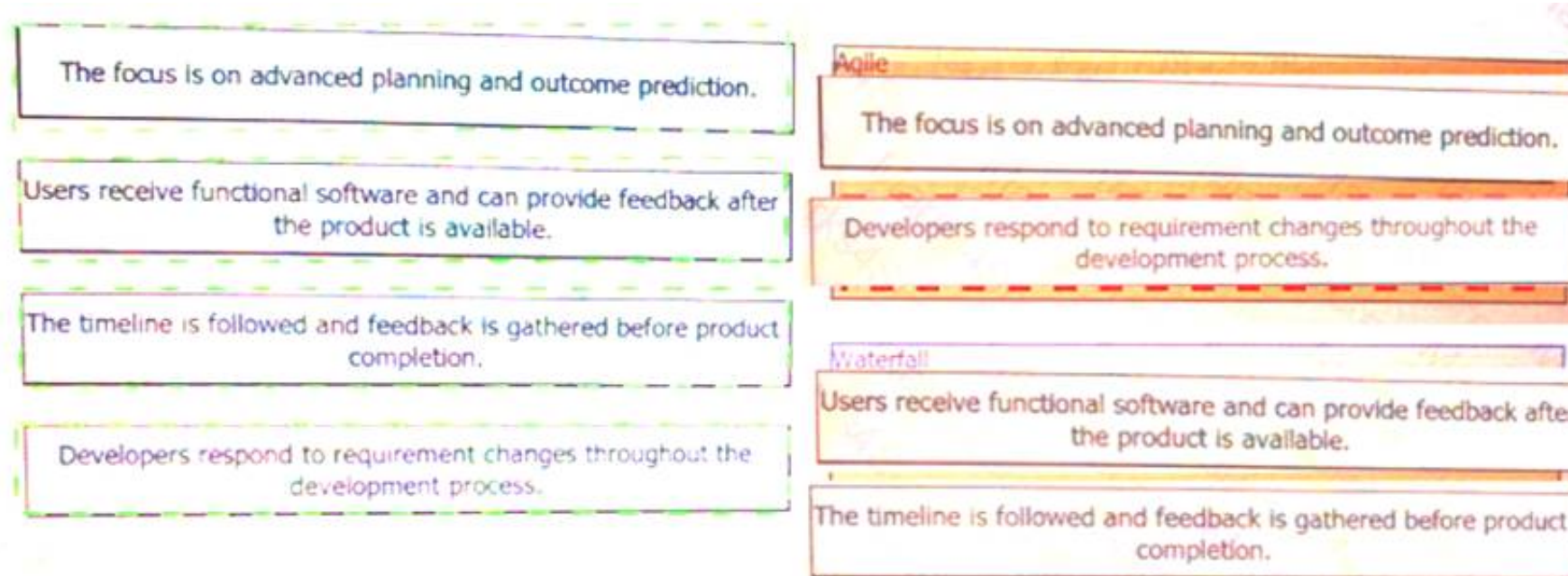


- A. Mastered
- B. Not Mastered

Answer: A

#### Explanation:

Solution as below



#### NEW QUESTION 5

Refer to the exhibit.

```
curl -X [redacted] -H "[redacted]: application/json" \
-H "[redacted]: Bearer AbCdEf123456" https://localhost/api/myresource
```

Which two statement describe the configuration of the Ansible script is run? (Choose two.)

- A. Traffic on port 0/2 and 0/3 is connected to port 0/6.
- B. Traffic from ports 0/2 to 0/5 can flow on port 0/1 due to the trunk.
- C. Traffic can flow between ports 0/2 to 0/5 due to the trunk on port 0/1.
- D. GigabitEthernet0/2 and GigabitEthernet0/3 are access ports for VLAN 6.
- E. GiabitEthernet0/1 is left unconfigured.

Answer: BD

#### NEW QUESTION 6

Which statement about authentication a RESTCONF API session with a router that runs Cisco IOS XE software is true?

- A. OAuth must be used.
- B. A token must be retrieved and the associated string must be embedded in the X-Auth-Token header.
- C. Basic authentication must be used.
- D. No authentication is required.

Answer: C

#### NEW QUESTION 7

Refer to the exhibit.

```
$ pyang -f tree Cisco-IOS-XE-native.yang
module: Cisco-IOS-XE-native
  +--rw native
    +--rw logging
      +--rw monitor|
        +--rw severity? logging-level-type

$ curl --insecure -v -X PATCH \
  "https://ios-xe-mgmt-latest.cisco.com:9443/restconf/data/Cisco-IOS-XE-native:native" \
  -H 'Authorization: Basic ZGV2ZWxvcGVyOkMxc2NmMTIzNDU=' -H 'Accept: application/yang-data+json' \
  -H 'Content-Type: application/yang-data+json' \
  -d '{ "Cisco-IOS-XE-native:native" : { "logging" : { "monitor" : { "severity" : "alerts" }} } }'
> ...
< ...
< HTTP/1.1 204 No Content
```

What is represented in this YANG module?

- A. interface management
- B. topology

- C. BGP
- D. OpenFlow

**Answer:** A

#### NEW QUESTION 8

What are two benefit of managing network configuration via APIs? (Choose two.)

- A. configuration on devices becomes less complex
- B. more security due to locking out manual device configuration
- C. increased scalability and consistency of network changes
- D. eliminates the need of legacy management protocols like SNMP
- E. reduction in network changes performed manually

**Answer:** CE

#### NEW QUESTION 9

Which two items are Cisco DevNet resources? (Choose two.)

- A. TAC support
- B. Bitbucket
- C. Sandbox
- D. Software research
- E. API Documentation

**Answer:** CE

#### NEW QUESTION 10

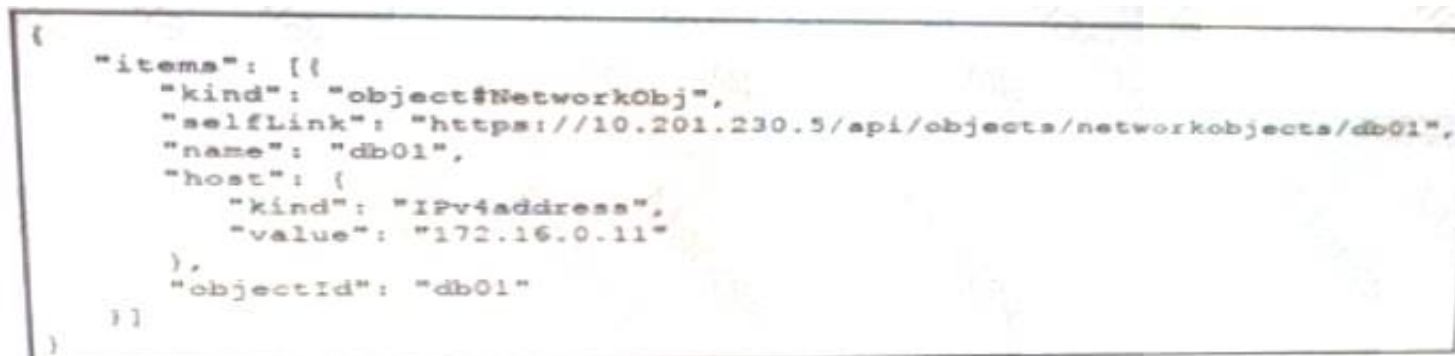
Which way should be used to safely the API keys?

- A. In an environment variable unique to the system database
- B. Encrypted in a configuration file that is separate from the code
- C. Encrypted in the code in a function
- D. Plain text in the code as a constant

**Answer:** B

#### NEW QUESTION 10

Refer to the exhibit.



```
{
  "items": [{
    "kind": "object#NetworkObj",
    "selfLink": "https://10.201.230.5/api/objects/networkobjects/db01",
    "name": "db01",
    "host": {
      "kind": "IPv4address",
      "value": "172.16.0.11"
    },
    "objectId": "db01"
  }]
}
```

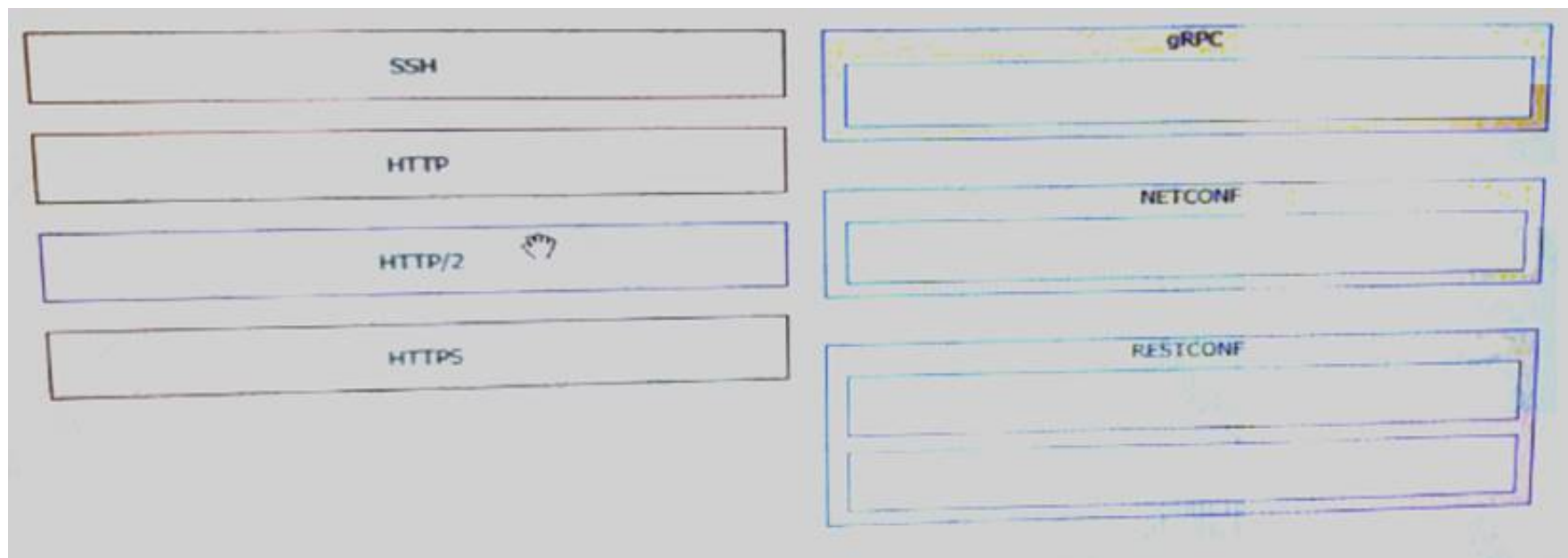
What is the action of the Bash script that is shown?

- A. The script waits until input is entered
- B. If the directory exists, the script goes into it until there is no directory with the same name, then it creates a new directory.
- C. The script goes into the directory called "\$ndir" and makes a new directory called "\$ndir"
- D. The script waits until input is entered, then it goes into the directory entered and creates a new directory with the same name.
- E. For all directories in the current folder
- F. The script goes into directory and makes a new directory.

**Answer:** A

#### NEW QUESTION 15

Drag and drop the network automation interfaces from the left onto the transport protocols that they support on the right.



- A. Mastered
- B. Not Mastered

**Answer:** A

**Explanation:**

gRPC = C, NETCONF = A, RESTCONF = B, D

**NEW QUESTION 20**

Which is an advantage of using network programmability?

- A. It removes CLI access for devices.
- B. It provides for more scalable and replicable network provisioning.
- C. Manual configuration is faster.
- D. No cloud abstraction occurs.

**Answer:** B

**NEW QUESTION 23**

Refer to the exhibit.

```
A. [ {
  "books": {
    "science": {
      "biology": "10.00",
      "geology": "9.00",
      "chemistry": "8.00"
    },
    "math": {
      "calculus": "20.00",
      "algebra": "12.00"
    }
  }
} ]

B. {
  "books": [
    "science": {
      "biology": "10.00",
      "geology": "9.00",
      "chemistry": "8.00"
    },
    "math": {
      "calculus": "20.00",
      "algebra": "12.00"
    }
  ]
}
```

Which python data structure does my\_json contain?

- A. List
- B. Json
- C. Map

D. Dict

Answer: D

#### NEW QUESTION 28

Refer to the exhibit.

**URL:** https://<ASA\_IP>/api/access/global/rules

**Method:** POST

**Payload:**

```
{
  "destinationAddress": {
    "kind": "IPv4Address",
    "value": "10.1.1.1"
  },
  "remarks": [ ],
  "active": true
  "permit": true,
  "sourceAddress": {
    "kind": "IPv4Address",
    "value": "192.168.1.1"
  }
}
```

**Response Status Code:** 400 Bad Request

*{"messages":[{"level":"Error","code":"JSON-PARSE-ERROR","details":"Unexpected character ('\\" (code 34)):"}*

What caused the error in this API request?

- A. The API resource does not support the POST operation
- B. The API resource does not support JSON format payloads.
- C. The submitted JSON payload includes a field that is not supported by the API resource.
- D. The submitted JSON payload has a formatting issue

Answer: D

#### NEW QUESTION 30

Which platform has an API that be used to obtain a list of vulnerable software on user devices?

- A. Cisco Umbrella
- B. Cisco Firepower
- C. Cisco Identity Services Engine
- D. Cisco Advanced Malware Protection

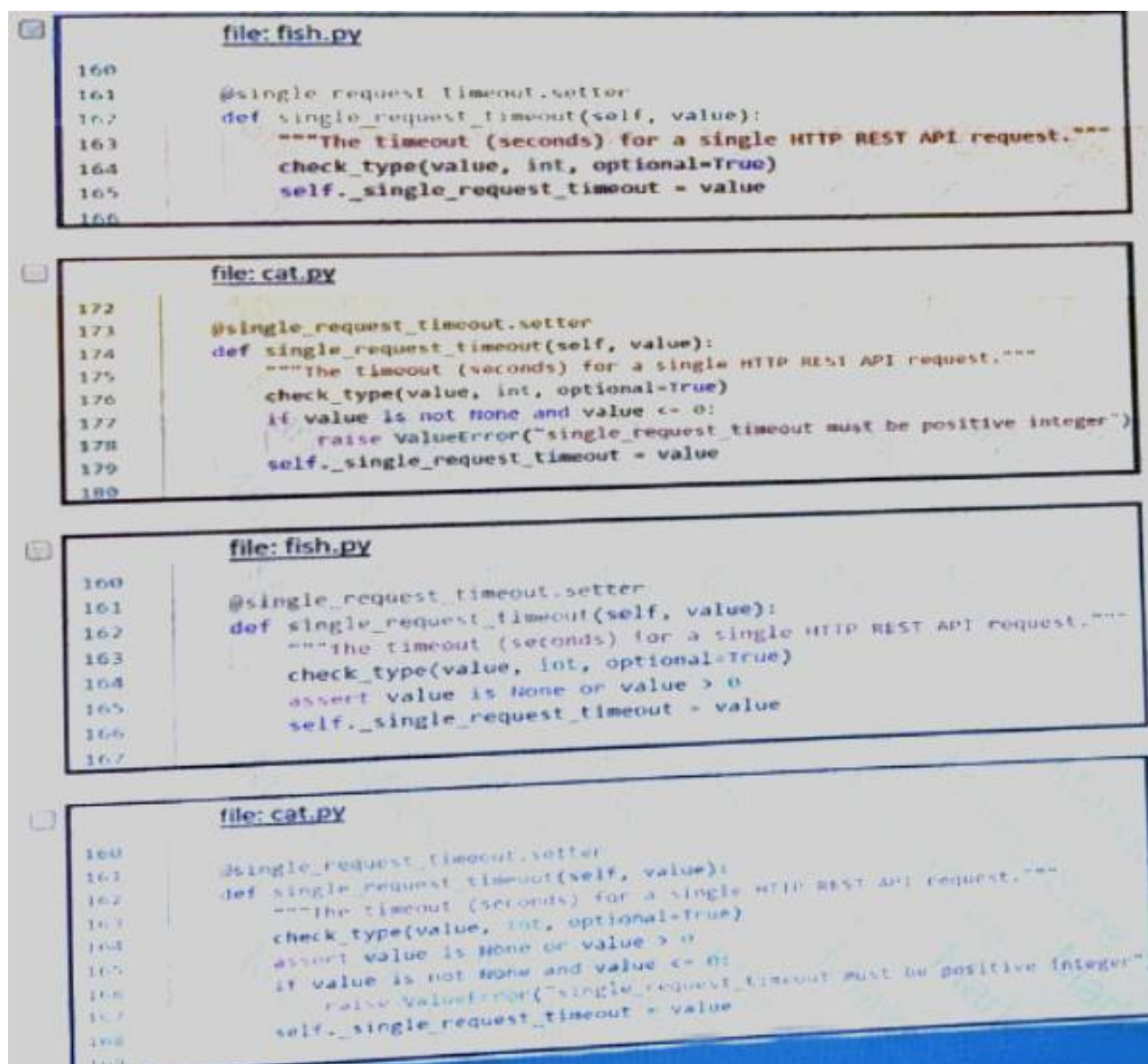
Answer: D

#### NEW QUESTION 34

Fill in the blanks to complete the statement.

Cisco DNA provide the capability to send an HTTP \_\_\_\_\_ request to the API endpoint https://DNA-c\_API\_ADDRESS/api/vi/network-device/ and receive the network \_\_\_\_\_list in \_\_\_\_\_ format.





- A. Mastered  
B. Not Mastered

Answer: A

Explanation:

Solution below as

Refer to the exhibit. The output of a unified diff when comparing two versions of a Python script is shown. Which two "single\_request\_timeout()" functions are defined in fish.py and cat.py, where the left column indicates the line numbers of the fish.py and cat.py code listings? (Choose two.)

Line File: cat.py

```

173 @single_request_timeout.setter
174 def single_request_timeout(self, value):
175     """The timeout (seconds) for a single HTTP REST API request."""
176     check_type(value, int, optional=True)
177     if value is not None and value <= 0:
178         raise ValueError("timeout value must be positive int")
179     self.single_request_timeout = value
180
        
```

A

Line File: cat.py

```

160 @single_request_timeout.setter
161 def single_request_timeout(self, value):
162     """The timeout (seconds) for a single HTTP REST API request."""
163     check_type(value, int, optional=True)
164     if value is not None and value <= 0:
165         raise ValueError("timeout value must be positive int")
166     self.single_request_timeout = value
167
        
```

B

Line File: fish.py

```

160 @single_request_timeout.setter
161 def single_request_timeout(self, value):
162     """The timeout (seconds) for a single HTTP REST API request."""
163     check_type(value, int, optional=True)
164     self.single_request_timeout = value
165
        
```

C

### NEW QUESTION 39

Which action resolves a 401 error in response to an HTTP GET that is issued to retrieve statement using RESTCONF on a CSR 1000V?

- A. Change the HTTP method to PUT.  
B. Change the transport protocol to HTTPS.  
C. Check the MIMF types in the HTTP headers.



D. Check the authentication credentials.

**Answer:** D

#### NEW QUESTION 44

What is an example of a network interface hardware address?

- A. domain name
- B. IP address
- C. workstation name
- D. MAC address

**Answer:** D

#### NEW QUESTION 49

Refer to the exhibit.

```
>>> from cli import *
>>> import json

>>>
>>> cli('configure terminal ; interface loopback 5 ; no shut')
''
>>> intflist=json.loads(clid('show interface brief'))
>>> i=0
>>> while i < len (intflist['TABLE_interface']['ROW_interface']):
...     intf=intflist['TABLE_interface']['ROW_interface'][i]
...     i=i+1
...     if intf['state'] == 'up':
...         print intf['interface']
```

What caused the error in this API request?

- A. The API resource does not support the POST operation.
- B. The API resource does not support JSON format payloads.
- C. The submitted JSON payload includes a field that is not supported by the API resources.
- D. The submitted JSON payload has a formatting issue.

**Answer:** D

#### NEW QUESTION 52

Which two statements are true about Cisco UCS manager, Cisco Intersight APIs? (Choose two.)

- A. Cisco Intersight API interactions can be encoded in XML or JSON and require an APIs key in the HTTP header for authentication.
- B. USC Director API interactions can be XML- or JSON-encoded and require an APLs key in the HTTP header for authentication.
- C. UCS manager API interactions are XML-encoded and require a cookie in the method for authentication.
- D. Cisco Intersight uses XML to encoded API interactions and requires an API key pair for authentication.
- E. UCS manager uses JSON to encode API interactions and utilizes Base64-encoded credentials in the HTTP header for authentication.

**Answer:** BC

#### NEW QUESTION 55

Which two statement describe the role of an artifact repository in a CI/CD pipeline? (Choose two.)

- A. An artifact repository allows to compare and merge changes in the source code of files involved in a build process.
- B. An artifact repository is needed only for CI/CD pipeline executed on a public cloud infrastructure.
- C. An artifact repository provides traceability, search, and management of binary files.
- D. An artifact repository is needed only for managing open source software.
- E. An artifact repository stores files needed and generated during the build process.

**Answer:** CE

#### NEW QUESTION 56

Drag and drop the requests from the left into the correct order on the right to create and check the path trace between two devices using Cisco DNA center API.

HTTP GET /v1/rooms ?sortBy=lastactivity

- A. Mastered
- B. Not Mastered

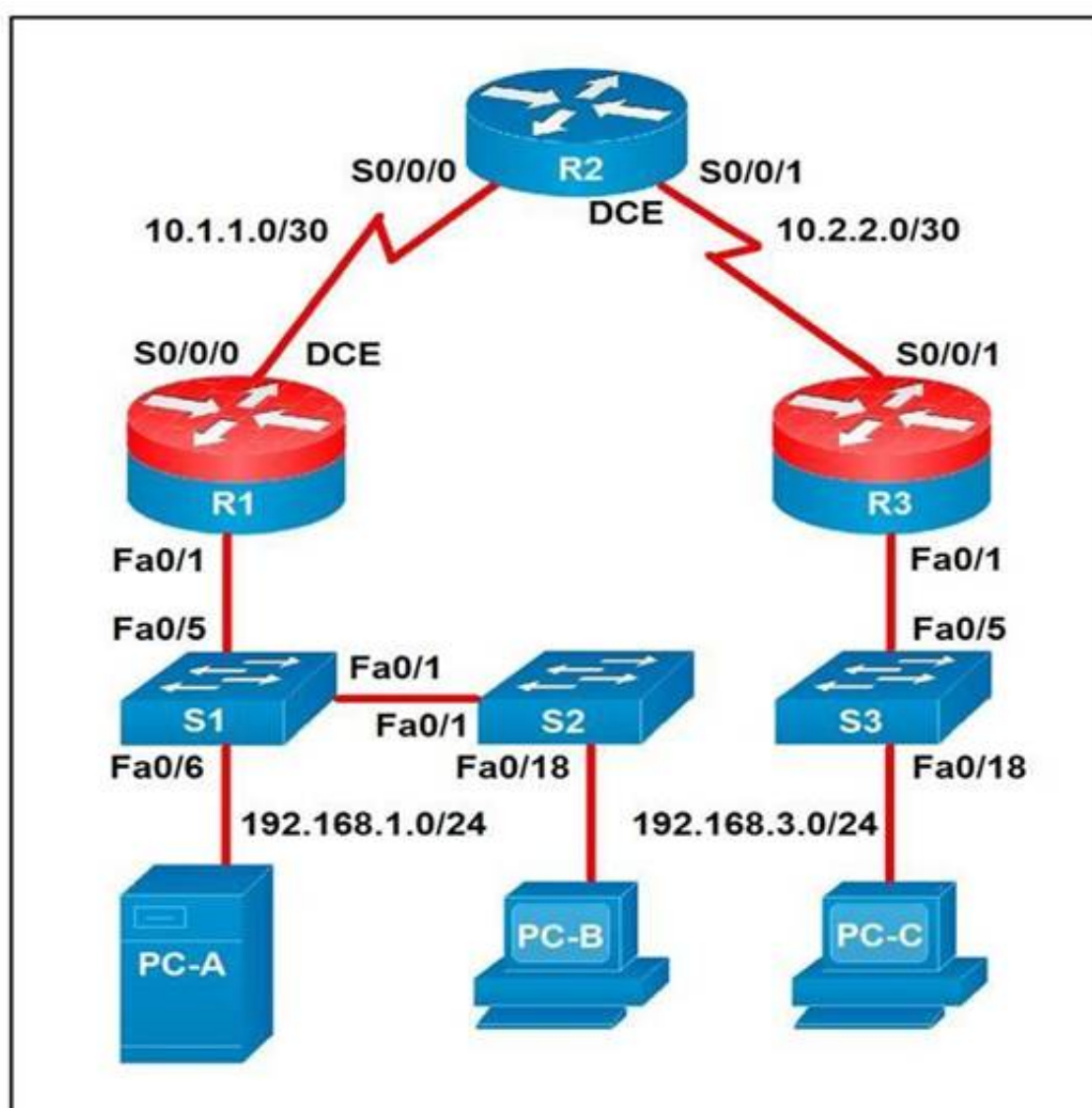
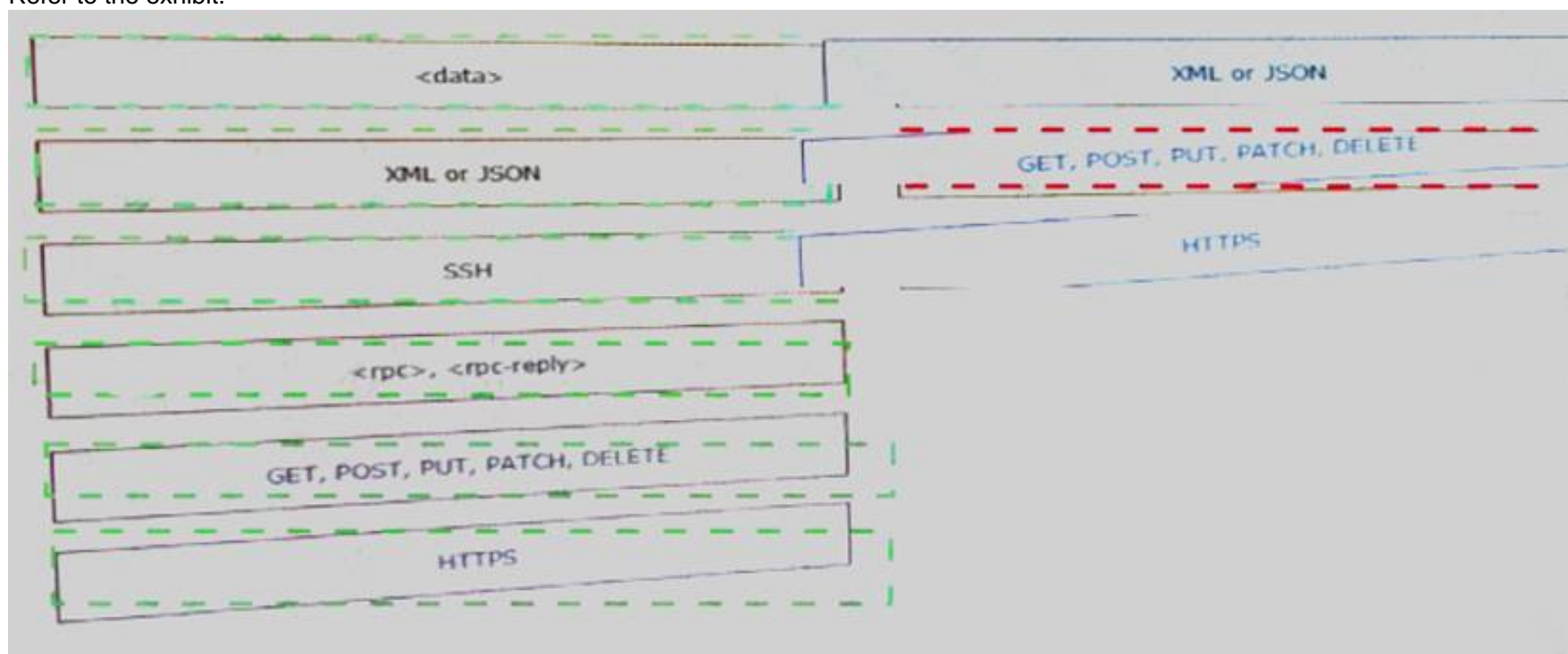
Answer: A

Explanation:

1 – C, 2 – D, 3 – B, 4 - A

# NEW QUESTION 61

Refer to the exhibit.



A developer is troubleshooting an API with the given API with the given API documentation and cURL command. What is the cause of this problem?

- A. The user is not allowed to post messages from their account
- B. The request body is missing or incomplete
- C. The API token specified is expired
- D. The authorization header is missing or incomplete

Answer: C

# NEW QUESTION 66

Drag and drop the HTTP methods from the left onto their generally accepted corresponding create, read, update, and delete operations on the right.

```
"organization_id": <new_org_id>,  
"type": "wireless",  
"timeZone": "America/Los_Angeles",  
"tags": " test "  
} }
```

t. Fill in the blanks to complete the cURL command to list the networks in the Meraki organization with an Id of 384279060:

meraki.com/api/v0/organizations /384279060 /networks  
-X-API-Key: 'Smeraki\_api\_key'

- A. Mastered
- B. Not Mastered

Answer: A

Explanation:  
1 – D, 2 – B, 3 – C, 4 – E, 5 – A

NEW QUESTION 71

An application calls a REST API and expects a result set of more than 550 records, but each time the call is made, only 25 are returned. Which feature limits the amount of data that is returned by the API?

- A. pagination
- B. payload limit
- C. rate limiting
- D. service timeouts

Answer: A

NEW QUESTION 73

Refer to the exhibit.

ports are different broadcast domain by default	Firewall
ports can be in the same broadcast domain	Load Balancer
uses traffic inspection to make routing decisions	Router
blocks networks traffic by default	Switch

An administrator attempts to perform a GET using the Cisco IOS XE RESTOCNF API to return the hostname of a device. The sequence diagram illustrated the HTTP message observed. Which change to the API request resolves the issue?

- A. Add Content-Type HTTP header with 'application/yang-data+json' using -H 'Content-Type: application/yang-data+json'.
- B. Use -u cisco: cisco instead of -u 'cisco: cisco'.
- C. Change the request method from -X "GET" to- X' POST".
- D. Remove the -H 'Accept: application/yang-data+json' HTTP header because it is not required.

Answer: B

NEW QUESTION 77

Refer to the exhibit.



blocks networks traffic by default

uses traffic inspection to make routing decisions

ports are different broadcast domain by default

ports can be in the same broadcast domain

Given the API documentation for the UCS SDK python class, UcsHandle, which code snippet creates a handle instance?

```
---
- hosts: switch2960cx
  gather_facts: no

  tasks:
    - ios_l2_interface:
      name: GigabitEthernet0/1
      state: unconfigured

    - ios_l2_interface:
      name: GigabitEthernet0/1
      mode: trunk
      native_vlan: 1
      trunk_allowed_vlans: 6-8
      state: present

    - ios_vlan:
      vlan_id: 6
      name: guest-vlan
      interfaces:
        - GigabitEthernet0/2
        - GigabitEthernet0/3

    - ios_vlan:
      vlan_id: 7
      name: corporate-vlan
      interfaces:
        - GigabitEthernet0/4

    - ios_vlan:
      vlan_id: 8
      name: iot-vlan
      interfaces:
        - GigabitEthernet0/5
```

- A. Option A
- B. Option B
- C. Option C
- D. Option D

Answer: B

#### NEW QUESTION 82

Which task is performed because the test-driven development approach is being used?

- A. testing existing software before developing new code
- B. refactoring code that is covered by existing tests
- C. writing code without committing any coding violations
- D. creating test scenarios based on continuous development

Answer: B

**NEW QUESTION 85**

In DNS, which record specifies an alias that refers to another name that ultimately resolves to an IP address?

- A. AAA
- B. SOA
- C. NS
- D. CNAME

**Answer:** D

**NEW QUESTION 87**

Drag and drop the element of the Finesse API on the left onto the description of its functionality on the right.

```
module ex-ethernet {
  namespace "http://example.com/Ethernet";
  prefix "eth";
  import ietf-interfaces {
    prefix if;
  }
  augment "/if:interfaces/if:interface" {
    when "if:type = 'ethernetCsmacd'";
    container ethernet {
      must "../if:location" {
        description
          "An Ethernet interface must specify the physical location of the ethernet hardware.";
      }
      choice transmission-params {
        case auto {
          leaf auto-negotiate {
            type empty;
          }
        }
        case manual {
          leaf duplex {
            type enumeration {
              enum "half";
              enum "full";
            }
          }
          leaf speed {
            type enumeration {
              enum "10Mb";
              enum "100Mb";
              enum "1Gb";
              enum "10Gb";
            }
          }
        }
      }
    }
  }
} // other ethernet specific params...
```

- A. Mastered
- B. Not Mastered

**Answer:** A

**Explanation:**

1 – D, 2 – F, 3 – A, 4 – E, 5 – B, 6 – G, 7 - C

**NEW QUESTION 89**

Which action does the Git command git merge allow the development to perform?

- A. Combine multiple sequence of commits into one unified history.
- B. Push changes to the remote repository
- C. Switch between branches
- D. Create, list, rename, and delete branches

**Answer:** A

**NEW QUESTION 92**

Which model-driven programmability protocol does Cisco IOS XE Software support?

- A. CORBA
- B. SSH
- C. gNMI
- D. SOAP

**Answer:** C

#### NEW QUESTION 96

Which two encoding formats do YANG interfaces support?

- A. JSON
- B. XML
- C. XHTML
- D. Plain text
- E. BER

**Answer:** AB

#### NEW QUESTION 101

Drag and drop the HTTP status codes from the left onto the correct descriptions on the right.

GET /api/v1/flow-analysis/{flowAnalysisId}	POST /api/system/v1/auth/token
POST /api/v1/flow-analysis	GET /api/v1/network-device/ and choose IP of source and destination devices
POST /api/system/v1/auth/token	POST /api/v1/flow-analysis
GET /api/v1/network-device/ and choose IP of source and destination devices	GET /api/v1/flow-analysis/{flowAnalysisId}

- A. Mastered
- B. Not Mastered

**Answer:** A

#### Explanation:

1 – B, 2 – D, 3 – A, 4 – C

#### NEW QUESTION 102

Which detail is included in a routing table?

- A. IP protocol
- B. Broadcast address
- C. TCP or UDP port number
- D. Destination next hop or outgoing interface

**Answer:** D

#### NEW QUESTION 103

What are two advantages of the Model-view-controller software design pattern? (Choose two.)

- A. simplifies network automation
- B. allows for multiple views of the same model
- C. makes code easier to deploy using CI/CD pipelines
- D. reduces need for error handling
- E. separates responsibilities of the code, which makes future modifications easier

**Answer:** BE

#### NEW QUESTION 106

Which two statements describe the traits of an asynchronous API call? (Choose two.)

- A. The order in which API calls return can be guaranteed
- B. A call to an API does not block the code, but rather it allows application processing to continue
- C. The end user can experience latency or performance lag while waiting for the API call to return
- D. Code execution blocks or waits for the call to an API to return.
- E. A callback function typically is used to process the response from an API call

**Answer:** BE

#### NEW QUESTION 107

Drag and Drop the Bash commands from the left onto the correct actions on the right.





- A. Mastered
- B. Not Mastered

Answer: A

Explanation:

1 - d, 2 - i, 3 - e, 4 - a, 5 - j, 6 - b, 7 - g, 8 - h, 9 - c, 10 - f

NEW QUESTION 109

Fill in the blanks to complete the statement.

Given a username of “devnet” And a password “Cisco123”, applications must create a base64 encoding of the string”\_\_\_\_\_” when sanding HTTP requests to an API that uses \_\_\_\_\_ authentication.



- A. Mastered
- B. Not Mastered

Answer: A

Explanation:

```
docker run -p 3000:5000 f877cbf2ff33
```

NEW QUESTION 110

Which two concepts describe test-driven development? (Choose two.)

- A. It enables code refactoring.
- B. Write a test before writing code.
- C. Implementation is driven by incremental testing of release candidates.
- D. User acceptance testers development the test requirements.
- E. Tests are created when code is ready for release.

Answer: BC

NEW QUESTION 112

What is the Git command to delete a local branch named “experiment” without a warning?

- A. git branch -n experiment
- B. git branch -rm experiment
- C. git branch -f experiment
- D. git branch -D experiment

Answer: D

#### NEW QUESTION 117

What is the purpose of the Cisco VIRL software tool?

- A. To verify configurations against compliance standards
- B. To simulate and model networks
- C. To automate API workflows
- D. To test performance of an application

Answer: B

#### NEW QUESTION 120

Refer to the exhibit.

List the clients that have used this network in the timespan

**HTTP REQUEST**

GET /networks/ {networkId}/clients

**PARAMETERS**

**t0**  
The beginning of the timespan for the data. The maximum lookback period is 31 days from today.

---

**timespan**  
The timespan for which the information will be fetched. If specifying timespan, do not specify parameter t0. The value must be in seconds and be less than or equal to 31 days. The default is 1 day.

---

**perPage**  
The number of entries per page returned. Acceptable range is 3 – 1000. Default is 10.

---

**startingAfter**  
A token used by the server to indicate the start of the page. Often this is a timestamp or an ID but it is not limited to those. This parameter should not be defined by client applications. The link for the first, last, prev, or next page in the HTTP Link header should define it.

---

**endingBefore**  
A token used by the server to indicate the end of the page. Often this is a timestamp or an ID but it is not limited to those. This parameter should not be defined by client applications. The link for the first, last, prev, or next page in the HTTP Link header should define it.

The output of a unified diff when comparing two versions of a python script is shown. Which two “single\_request \_ timeout ()”

```

base_url = https://api.meraki.com/api/v0"
network_id = "L_12345678910"
api_key = "1098hadpfsiapsf8ahf8ohp"
requests.<item 1> (
    <item 2> + "/<item 3>/" + /<item 4>, "/<item 5>",
    headers = {
        "X-Cisco-Meraki-API-Key": "<item 6>",
        "Content-Type": "<item 7>"
    },
    <item 8>={"<item 9>":"/<item 10>})

```

- A. Option A
- B. Option B
- C. Option C
- D. Option D

Answer: BC

#### NEW QUESTION 124

.....

## THANKS FOR TRYING THE DEMO OF OUR PRODUCT

Visit Our Site to Purchase the Full Set of Actual 200-901 Exam Questions With Answers.

We Also Provide Practice Exam Software That Simulates Real Exam Environment And Has Many Self-Assessment Features. Order the 200-901 Product From:

<https://www.2passeasy.com/dumps/200-901/>

## Money Back Guarantee

### 200-901 Practice Exam Features:

- \* 200-901 Questions and Answers Updated Frequently
- \* 200-901 Practice Questions Verified by Expert Senior Certified Staff
- \* 200-901 Most Realistic Questions that Guarantee you a Pass on Your FirstTry
- \* 200-901 Practice Test Questions in Multiple Choice Formats and Updatesfor 1 Year