



Microsoft

Exam Questions SC-300

Microsoft Identity and Access Administrator

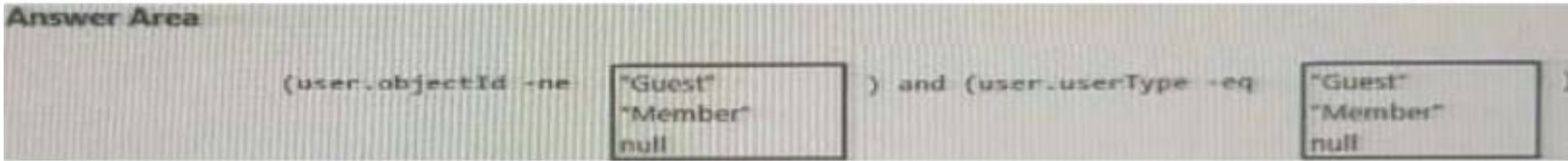
NEW QUESTION 1

- (Exam Topic 1)

You need to create the LWGroup1 group to meet the management requirements.

How should you complete the dynamic membership rule? To answer, drag the appropriate values to the correct targets. Each value may be used once, more than once, or not at all. You may need to drag the split bar between panes or scroll to view content.

NOTE: Each correct selection is worth one point.



- A. Mastered
- B. Not Mastered

Answer: A

Explanation:

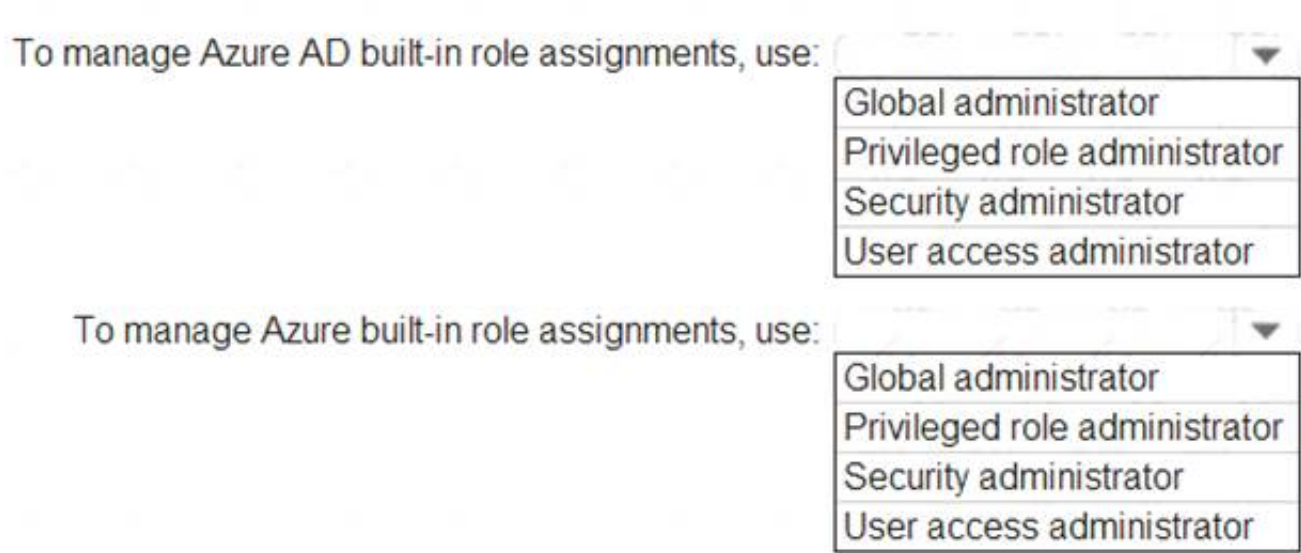
Null "Member"

NEW QUESTION 2

- (Exam Topic 1)

You need to identify which roles to use for managing role assignments. The solution must meet the delegation requirements.

What should you do? To answer, select the appropriate options in the answer area. NOTE: Each correct selection is worth one point.



- A. Mastered
- B. Not Mastered

Answer: A

Explanation:

Reference:

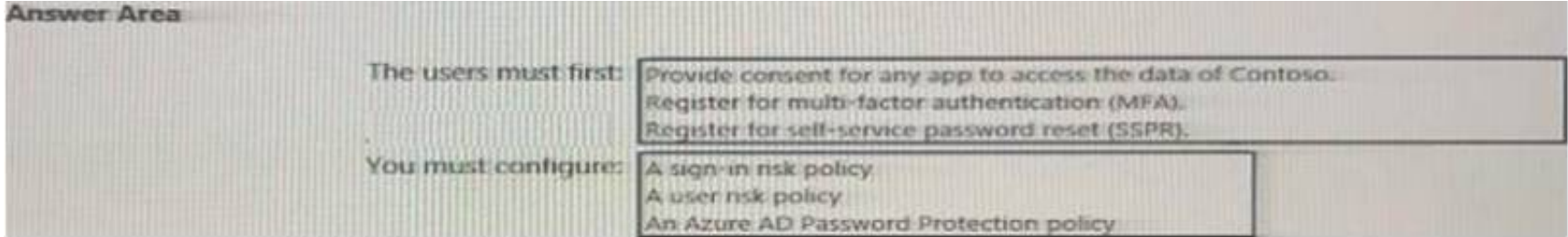
<https://docs.microsoft.com/en-us/azure/role-based-access-control/role-assignments-portal> <https://docs.microsoft.com/en-us/azure/active-directory/roles/permissions-reference>

NEW QUESTION 3

- (Exam Topic 2)

You need to meet the technical requirements for the probability that user identifies were compromised. What should the users do first, and what should you configure? To answer, select the appropriate options in the answer area.

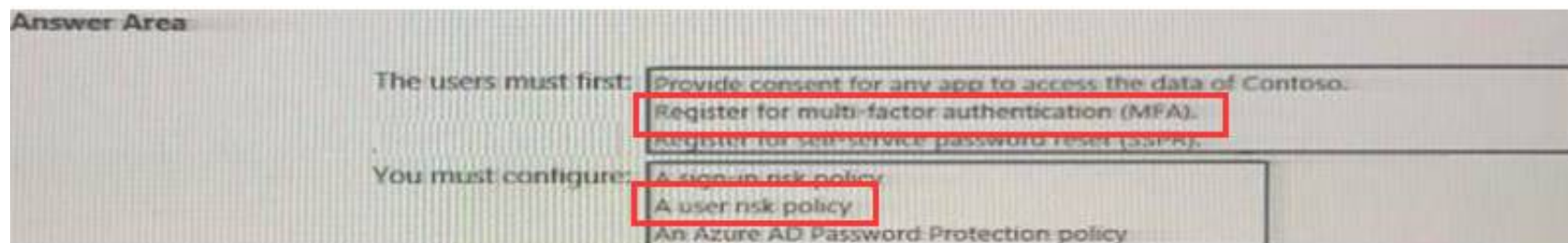
NOTE: Each correct selection is worth one point.



- A. Mastered
- B. Not Mastered

Answer: A

Explanation:



NEW QUESTION 4

- (Exam Topic 2)

You need to meet the technical requirements for the probability that user identities were compromised. What should the users do first, and what should you configure? To answer, select the appropriate options in the answer area.

NOTE: Each correct selection is worth one point.

The users must first:

- Provide consent for any app to access the data of Contoso.
- Register for multi-factor authentication (MFA).
- Register for self-service password reset (SSPR).

You must configure:

- A sign-in risk policy
- A user risk policy
- An Azure AD Password Protection policy

- A. Mastered
- B. Not Mastered

Answer: A

Explanation:

Reference:

<https://docs.microsoft.com/en-us/azure/active-directory/identity-protection/concept-identity-protection-policies>

NEW QUESTION 5

- (Exam Topic 2)

You need to meet the planned changes for the User administrator role. What should you do?

- A. Create an access review.
- B. Modify Role settings
- C. Create an administrator unit.
- D. Modify Active Assignments.

Answer: B

Explanation:

Role Setting details is where you need to be: Role setting details - User Administrator Privileged Identity Management | Azure AD roles

Default Setting State

Require justification on activation Yes Require ticket information on activation No On activation, require Azure MFA Yes Require approval to activate No

Approvers None

NEW QUESTION 6

- (Exam Topic 2)

You need to implement the planned changes and technical requirements for the marketing department. What should you do? To answer, select the appropriate options in the answer area.

NOTE: Each correct selection is worth one point.

To configure user access:

- An access package
- An access review
- A conditional access policy

To enable collaboration with fabrikam.com:

- An accepted domain
- A connected organization
- A custom domain name

- A. Mastered
- B. Not Mastered

Answer: A

Explanation:

Reference:

<https://docs.microsoft.com/en-us/azure/active-directory/governance/entitlement-management-organization>

NEW QUESTION 7

- (Exam Topic 3)

You need to implement the planned changes for Package1. Which users can create and manage the access review?

- A. User3 only
- B. User4 only
- C. User5 only
- D. User3 and User4
- E. User3 and User5
- F. User4and User5

Answer: E

NEW QUESTION 8

- (Exam Topic 3)

You need implement the planned changes for application access to organizational data. What should you configure?

- A. authentication methods
- B. the User consent settings
- C. access packages
- D. an application proxy

Answer: B

NEW QUESTION 9

- (Exam Topic 3)

You need to resolve the recent security incident issues.

What should you configure for each incident? To answer, drag the appropriate policy types to the correct

issues. Each policy type may be used once, more than once, or not at all. You may need to drag the split bar between panes or scroll to view content.

NOTE: Each correct selection is worth one point.

Policy Types	Answer Area
An authentication method policy	Leaked credentials:
A Conditional Access policy	A sign-in from a suspicious browser:
A sign-in risk policy	Resources accessed from an anonymous IP address:
A user risk policy	

- A. Mastered
- B. Not Mastered

Answer: A

Explanation:

Policy Types	Answer Area
An authentication method policy	Leaked credentials: A user risk policy
A Conditional Access policy	A sign-in from a suspicious browser: A sign-in risk policy
A sign-in risk policy	Resources accessed from an anonymous IP address: A sign-in risk policy
A user risk policy	

NEW QUESTION 10

- (Exam Topic 4)

You have an Azure Active Directory (Azure AD) tenant that contains a user named User1. An administrator deletes User1.

You need to identify the following:

- How many days after the account of User1 is deleted can you restore the account?
- Which is the least privileged role that can be used to restore User1?

What should you identify? To answer, select the appropriate options in the answer area. NOTE: Each correct selection is worth one point.

Answer Area

Number of days:

Role:

- A. Mastered
- B. Not Mastered

Answer: A

Explanation:

Answer Area

Number of days:

Role:

NEW QUESTION 10

- (Exam Topic 4)

You have an Azure AD tenant named Contoso that contains a terms of use (ToU) named Terms1 and an access package. Contoso users collaborate with an external organization named Fabrikam. Fabrikam users must accept Terms1 before being allowed to use the access package. You need to identify which users accepted or declined Terms1. What should you use?

- A. provisioning logs
- B. the Usage and Insights report
- C. sign-in logs
- D. audit logs

Answer: D

NEW QUESTION 15

- (Exam Topic 4)

Your company requires that users request access before they can access corporate applications.

You register a new enterprise application named MyApp1 in Azure Active Directory (Azure AD) and configure single sign-on (SSO) for MyApp1.

Which settings should you configure next for MyApp1?

- A. Self-service
- B. Provisioning
- C. Roles and administrators
- D. Application proxy

Answer: A

Explanation:

Reference:

<https://docs.microsoft.com/en-us/azure/active-directory/manage-apps/manage-self-service-access>

NEW QUESTION 19

- (Exam Topic 4)

Your network contains an on-premises Active Directory domain that syncs to an Azure AD tenant. Users sign in to computers that run Windows 10 and are joined to the domain.

You plan to implement Azure AD Seamless Single Sign-On (Azure AD Seamless SSO). You need to configure the Windows 10 computers to support Azure AD Seamless SSO. What should you do?

- A. Modify the Local intranet zone settings
- B. Configure Sign-in options from the Settings app.
- C. Enable Enterprise State Roaming.

D. Install the Azure AD Connect Authentication Agent.

Answer: B

NEW QUESTION 23

- (Exam Topic 4)

You have an Azure Active Directory (Azure AD) tenant that syncs to an Active Directory domain. The on-premises network contains a VPN server that authenticates to the on-premises Active Directory domain. The VPN server does NOT support Azure Multi-Factor Authentication (MFA). You need to recommend a solution to provide Azure MFA for VPN connections. What should you include in the recommendation?

- A. Azure AD Application Proxy
- B. an Azure AD Password Protection proxy
- C. Network Policy Server (NPS)
- D. a pass-through authentication proxy

Answer: C

NEW QUESTION 27

- (Exam Topic 4)

You have a Microsoft 365 E5 subscription and an Azure subscription. You need to meet the following requirements:

- Ensure that users can sign in to Azure virtual machines by using their Microsoft 365 credentials.
- Delegate the ability to create new virtual machines.

What should you use for each requirement? To answer, drag the appropriate features to the correct requirements. Each feature may be used once, more than once, or not at all. You may need to drag the split bar between panes or scroll to view content.

Features

Azure AD built-in roles

Azure AD managed identities

Azure role-based access control (Azure RBAC)

Answer Area

Ensure that users can sign in to Azure virtual machines by using their Microsoft 365 credentials:

Delegate the ability to create new virtual machines:

- A. Mastered
- B. Not Mastered

Answer: A

Explanation:

Features

Azure AD built-in roles

Azure AD managed identities

Azure role-based access control (Azure RBAC)

Answer Area

Ensure that users can sign in to Azure virtual machines by using their Microsoft 365 credentials:

Delegate the ability to create new virtual machines:

NEW QUESTION 32

- (Exam Topic 4)

You have a Microsoft 365 E5 subscription. You purchase the app governance add-on license. You need to enable app governance integration. Which portal should you use?

- A. the Microsoft Defender for Cloud Apps portal
- B. the Microsoft 365 admin center
- C. Microsoft 365 Defender
- D. the Azure Active Directory admin center
- E. the Microsoft Purview compliance portal

Answer: A

NEW QUESTION 37

- (Exam Topic 4)

You have an Azure Active Directory (Azure AD) tenant. You create an enterprise application collection named HR Apps that has the following settings:

- Applications: Appl. App?, App3
 - Owners: Admin 1
 - Users and groups: HRUsers
- AH three apps have the following Properties settings:
- Enabled for users to sign in: Yes
 - User assignment required: Yes
 - Visible to users: Yes

Users report that when they go to the My Apps portal, they only see App1 and App2-You need to ensure that the users can also see App3. What should you do from App3?
 What should you do from App3?

- A. From Users and groups, add HRUsers.
- B. From Properties, change User assignment required to No.
- C. From Permissions, review the User consent permissions.
- D. From Single sign on, configure a sign-on method.

Answer: A

Explanation:

Reference:
<https://docs.microsoft.com/en-us/azure/active-directory/manage-apps/assign-user-or-group-access-portal> <https://docs.microsoft.com/en-us/azure/active-directory/user-help/my-applications-portal-workspaces>

NEW QUESTION 42

- (Exam Topic 4)
 You have an Azure AD tenant.
 You perform the tasks shown in the following table.

Date	Task
March 1	Register four enterprise applications named App1, App2, App3, and App4.
March 15	From the tenant, update the following settings for App1: App roles, Users and groups, Client secret, and Self-service.
March 20	From the tenant, update the following settings for App2: App roles, Users and groups, Client secret, and Self-service.
March 25	From the tenant, update the following settings for App3: App roles, Users and groups, Client secret, and Self-service.
March 30	From the tenant, update the following settings for App4: App roles, Users and groups, Client secret, and Self-service.

On April 5, an administrator deletes App1, App2, App3, and App4.
 You need to restore the apps and the settings.
 Which apps can you restore on April 16, and which settings can you restore for App4 on April 16? To answer, select the appropriate options in the answer area.
 NOTE: Each correct selection is worth one point.

Answer Area

Apps:

App3 and App4 only
 No apps
 App4 only
 App3 and App4 only
 App2, App3, and App4 only
 App1, App2, App3, and App4

App4 settings:

App roles, Users and groups, Client secret, and Self-service
 No settings
 Self-service only
 App roles and Client secret only
 Users and groups and Self-service only
 App roles, Users and groups, Client secret, and Self-service

- A. Mastered
- B. Not Mastered

Answer: A

Explanation:

A screenshot of a phone Description automatically generated

NEW QUESTION 44

- (Exam Topic 4)
 You have a Microsoft 365 ES subscription that user Microsoft Defender for Cloud Apps and Yammer. You need prevent users from signing in to Yammer from high-risk locations.
 What should you do in the Microsoft Defender for Cloud Apps portal?

- A. Create an access Policy.
- B. Create an activity policy.

- C. Unsanction Yammer.
- D. Create an anomaly detection policy.

Answer: A

NEW QUESTION 48

- (Exam Topic 4)

You have 2,500 users who are assigned Microsoft Office 365 Enterprise E3 licenses. The licenses are assigned to individual users. From the Groups blade in the Azure Active Directory admin center, you assign Microsoft 365 Enterprise E5 licenses to the users. You need to remove the Office 365 Enterprise E3 licenses from the users by using the least amount of administrative effort. What should you use?

- A. the Administrative units blade in the Azure Active Directory admin center
- B. the Set-AzureAdUser cmdlet
- C. the Groups blade in the Azure Active Directory admin center
- D. the Sec-MsolUserLicense cmdlet

Answer: C

Explanation:

Reference:

<https://docs.microsoft.com/en-us/powershell/module/msonline/set-msoluserlicense?view=azureadps-1.0>

NEW QUESTION 52

- (Exam Topic 4)

You have an Azure Active Directory (Azure AD) tenant that has Security defaults disabled. You are creating a conditional access policy as shown in the following exhibit.

New

Conditional access policy

Control user access based on conditional access policy to bring signals together, to make decisions, and enforce organizational policies. [Learn more](#)

Name *

Policy1 ✓

Assignments

Users and groups ⓘ
 Specific users included >

Cloud apps or actions ⓘ
 All cloud apps >

Conditions ⓘ
 0 conditions selected >

Access controls

Grant ⓘ
 0 controls selected >

Session ⓘ
 0 controls selected >

Control user access based on users and groups assignment for all users, specific groups of users, directory roles, or external guest users. [Learn more](#)

Include

Exclude

- ☐ None
- ☐ All users
- ☒ Select users and groups

☐ All guest users (preview) ⓘ

☐ Directory roles (preview) ⓘ

☒ Users and groups

Select ⓘ

1 user >

US User1
 user1@sk200922outlook.onm... ⋮

Enable policy

Report-only On Off

Create

Use the drop-down menus to select the answer choice that completes each statement based on the information presented in the graphic.

NOTE: Each correct selection is worth one point.

To ensure that User1 is prompted for multi-factor authentication (MFA) when accessing Cloud apps, you must configure the [answer choice].

▼

Conditions settings
Enable policy setting
Grant settings
Sessions settings
Users and groups setting

To ensure that User1 is prompted for authentication every eight hours, you must configure the [answer choice].

▼

Conditions settings
Enable policy setting
Grant settings
Sessions settings
Users and groups setting

- A. Mastered
- B. Not Mastered

Answer: A

Explanation:

Reference:
<https://docs.microsoft.com/en-us/azure/active-directory/conditional-access/howto-conditional-access-policy-all>

NEW QUESTION 53

- (Exam Topic 4)

You have an Azure subscription that contains the resources shown in the following table. You need to configure access to Vault1. The solution must meet the following requirements:

- Ensure that User1 can manage and create keys in Vault1.
- Ensure that User2 can access a certificate stored in Vault1.
- Use the principle of least privilege.

Which role should you assign to each user? To answer select the appropriate options in the answer area. NOTE: Each correct selection is worth one point.

Answer Area

▼

▼

▼

▼

▼

▼

▼

▼

User1:

▼

Key Vault Certificates Officer
Key Vault Certificates Officer
Key Vault Crypto Officer
Key Vault Secrets Officer

User2:

▼

Key Vault Certificates Officer
Key Vault Certificates Officer
Key Vault Crypto Officer
Key Vault Secrets Officer

- A. Mastered
- B. Not Mastered

Answer: A

Explanation:

A screenshot of a computer Description automatically generated

NEW QUESTION 54

- (Exam Topic 4)

Note: This question is part of a series of questions that present the same scenario. Each question in the series contains a unique solution that might meet the stated goals. Some question sets might have more than one correct solution, while others might not have a correct solution.

After you answer a question in this section, you will NOT be able to return to it as a result these questions will not appear in the review screen.

You have a Microsoft 365 ES subscription. You create a user named User1.

You need to ensure that User1 can update the status of identity Secure Score improvement actions. Solution: You assign the Security Operator role User1.

Does this meet the goal?

- A. Yes
- B. No

Answer: B

NEW QUESTION 59

- (Exam Topic 4)

You have an Azure AD tenant that contains the users shown in The following table.

Name	Role
User1	User Administrator
User2	Password Administrator
User3	Security Reader
User4	User

You enable self-service password reset (SSPR) for all the users and configure SSPR to require security questions as the only authentication method. Which users must use security questions when resetting their password?

- A. User4 only
- B. User3and User4only
- C. User1 and User4only
- D. User1, User3, and User4 only
- E. User1, User2, User3. and User4

Answer: B

NEW QUESTION 63

- (Exam Topic 4)

You have an Azure AD tenant that contains the users shown in the following table.

Name	Member of	Multi-factor authentication (MFA)
User1	Group1	Enabled but never used
User2	Group2	Disabled
User3	Group1, Group2	Enforced and used

In Azure AD Identity Protection, you configure a user risk policy that has the following settings:

- Assignments: o Users: Group1
- o User risk: Low and above

• Controls:

o Access: Block access

• Enforce policy: On

In Azure AD Identity Protection, you configure a sign-in risk policy that has the following settings:

- Assignments: o Users: Group2

o Sign-in risk: Low and above

• Controls:

o Access: Require multi-factor authentication

• Enforce policy. On the following settings: ng settings:

For each of the following statements, select Yes if the statement is true. Otherwise, select No. NOTE: Each correct selection is worth one point.

Answer Area

Statements	Yes	No
User1 can sign in from an anonymous IP address.	<input type="radio"/>	<input type="radio"/>
User2 can sign in from an anonymous IP address.	<input type="radio"/>	<input type="radio"/>
User3 can sign in from an anonymous IP address.	<input type="radio"/>	<input type="radio"/>

- A. Mastered
- B. Not Mastered

Answer: A

Explanation:

Answer Area

Statements	Yes	No
User1 can sign in from an anonymous IP address.	<input checked="" type="checkbox"/>	<input type="checkbox"/>
User2 can sign in from an anonymous IP address.	<input type="checkbox"/>	<input checked="" type="checkbox"/>
User3 can sign in from an anonymous IP address.	<input type="checkbox"/>	<input checked="" type="checkbox"/>

NEW QUESTION 65

- (Exam Topic 4)

You have an Azure AD tenant named contoso.com that contains a group named All Company and has the following Identity Governance settings:

- Block external users from signing in to this directory: Yes
- Remove external user Yes
- Number of days before removing external user from this directory: 30

On March 1, 2022, you create an access package named Package1 that has the following settings:

- Resource roles
 - o Name: All Company
 - o Type: Group and Team o Role: Member
 - Lifecycle
 - o Access package assignment expire: On date o Assignment expiration date: April 1, 2022
- On March 1, 2022, you assign Package1 to the guest users shown in the following table.

Name	Email address
Guest1	guest1@outlook.com
Guest2	guest2@outlook.com

On March 2, 2022, you assign the Reports reader role to Guest1.

On April 1(2022, you invite a guest user named Guest3 to contoso.com. On April 4, 2022, you add Guest3 to the All Company group.

For each of the following statements, select Yes if the statement is true. Otherwise, select No. NOTE: Each correct selection is worth one point.

Answer Area

Statements	Yes	No
On May 5, 2022, the Guest1 account is in contoso.com.	<input type="radio"/>	<input type="radio"/>
On May 5, 2022, the Guest2 account is in contoso.com.	<input type="radio"/>	<input type="radio"/>
On May 5, 2022, the Guest3 account is in contoso.com.	<input type="radio"/>	<input type="radio"/>

- A. Mastered
- B. Not Mastered

Answer: A

Explanation:

A screenshot of a computer Description automatically generated

NEW QUESTION 66

- (Exam Topic 4)

You have an Azure AD tenant

You configure User consent settings to allow users to provide consent to apps from verified publishers. You need to ensure that the users can only provide consent to apps that require low impact permissions. What should you do?

- A. Create an access package.
- B. Configure permission classifications.
- C. Create an enterprise application collection.
- D. Create an access review.

Answer: B

NEW QUESTION 70

- (Exam Topic 4)

You have an Azure AD tenant that contains the users shown in the following table.

Name	Role
Admin1	User Administrator
Admin2	Password Administrator
Admin3	Application Administrator

You need to compare the role permissions of each user. The solution must minimize administrative effort. What should you use?

- A. the Microsoft 365 Defender portal
- B. the Microsoft 365 admin center
- C. the Microsoft Entra admin center
- D. the Microsoft Purview compliance portal

Answer: C

NEW QUESTION 72

- (Exam Topic 4)

You have a Microsoft 365 tenant.

All users must use the Microsoft Authenticator app for multi-factor authentication (MFA) when accessing Microsoft 365 services.

Some users report that they received an MFA prompt on their Microsoft Authenticator app without initiating a sign-in request.

You need to block the users automatically when they report an MFA request that they did not initiate. Solution: From the Azure portal, you configure the Fraud alert settings for multi-factor authentication (MFA). Does this meet the goal?

- A. Yes
- B. No

Answer: A

Explanation:

The fraud alert feature lets users report fraudulent attempts to access their resources. When an unknown and suspicious MFA prompt is received, users can report the fraud attempt using the Microsoft Authenticator app or through their phone.

The following fraud alert configuration options are available:

- Automatically block users who report fraud.
- Code to report fraud during initial greeting. Reference:

<https://docs.microsoft.com/en-us/azure/active-directory/authentication/howto-mfa-mfasettings>

NEW QUESTION 77

- (Exam Topic 4)

You have an Azure Active Directory (Azure AD) tenant.

You configure self-service password reset (SSPR) by using the following settings:

- Require users to register when signing in: Yes
- Number of methods required to reset: 1

What is a valid authentication method available to users?

- A. home prions
- B. mobile app notification
- C. a mobile app code
- D. an email to an address in your organization

Answer: C

NEW QUESTION 80

- (Exam Topic 4)

You have a Microsoft 365 tenant.

In Azure Active Directory (Azure AD), you configure the terms of use.

You need to ensure that only users who accept the terms of use can access the resources in the tenant. Other users must be denied access.

What should you configure?

- A. an access policy in Microsoft Cloud App Security.
- B. Terms and conditions in Microsoft Endpoint Manager.
- C. a conditional access policy in Azure AD
- D. a compliance policy in Microsoft Endpoint Manager

Answer: C

Explanation:

Reference:

<https://docs.microsoft.com/en-us/azure/active-directory/conditional-access/terms-of-use>

NEW QUESTION 84

- (Exam Topic 4)

You have an Azure Active Directory (Azure AD) tenant that has multi-factor authentication (MFA) enabled. The account lockout settings are configured as shown in the following exhibit.

Account lockout

Temporarily lock accounts in the multi-factor authentication service if there are too many denied authentication attempts in a row. This feature only applies to users who enter a PIN to authenticate.

Number of MFA denials to trigger account lockout *

3

✓

Minutes until account lockout counter is reset *

60

✓

Minutes until account is automatically unblocked *

30

✓

Use the drop-down menus to select the answer choice that completes each statement based on the information presented in the graphic.

NOTE: Each correct selection is worth one point.

Answer Area

A user account will be locked out if the user enters the wrong [answer choice] three times.

email address

Microsoft Authenticator app code

password

If a user account is locked, the user can sign in again successfully after [answer choice] minutes.

30

60

90

- A. Mastered

B. Not Mastered

Answer: A

Explanation:

App code 60

https://docs.microsoft.com/en-us/azure/active-directory/authentication/howto-mfa-mfasettings#account-lockout

NEW QUESTION 86

- (Exam Topic 4)

You have an Azure Active Directory (Azure AD) tenant.

You need to review the Azure AD sign-ins log to investigate sign ins that occurred in the past. For how long does Azure AD store events in the sign-in log?

- A. 14 days

B. 30 days

C. 90 days

D. 365 days

Answer: B

NEW QUESTION 87

- (Exam Topic 4)

Your company has an Azure Active Directory (Azure AD) tenant named contoso.com. The company is developing a web service named App1.

You need to ensure that App1 can use Microsoft Graph to read directory data in contoso.com.

Which three actions should yon perform in sequence? To answer, move the appropriate actions from the list of actions to the answer area and arrange them In the correct order.

Actions

Create an app registration.

Add a group claim.

Add app permissions.

Grant admin consent.

Add delegated permissions.

>

<

Answer Area

>

<

- A. Mastered

B. Not Mastered

Answer: A

Explanation:

Graphical user interface, text, application Description automatically generated

> Create an app registration:

Your app must be registered with the Microsoft identity platform and be authorized by either a user or an administrator for access to the Microsoft Graph resources it needs.

> Grant admin consent:

Higher-privileged permissions require administrator consent.

> Add app permissions:

After the consents to permissions for your app, your app can acquire access tokens that represent the app's permission to access a resource in some capacity.

Encoded inside the access token is every permission that your app has been granted for that resource.

Reference:

<https://docs.microsoft.com/en-us/graph/auth/auth-concepts>

NEW QUESTION 92

- (Exam Topic 4)

Note: This question is part of a series of questions that present the same scenario. Each question in the series contains a unique solution that might meet the stated goals. Some question sets might have more than one correct solution, while others might not have a correct solution.

After you answer a question in this section, you will NOT be able to return to it. As a result, these questions will not appear in the review screen.

You have a Microsoft 365 tenant.

You have 100 IT administrators who are organized into 10 departments. You create the access review shown in the exhibit. (Click the Exhibit tab.)

Create an access review

Access reviews allow reviewers to attest to whether users still need to be in a role.

Review name * Admin review ✓

Description ⓘ

Start date * 12/18/2020

Frequency Monthly

Duration (in days) ⓘ 14

End ⓘ **Never** End by Occurrences

Number of times 0

End date 01/17/2021

Users

Scope ☒ Everyone

Review role membership (permanent and eligible) *
 Application Administrator and 72 others

Reviewers

Reviewers (Preview) Manager

(Preview) Fallback reviewers ⓘ
 Megan Bowen

✓ Upon completion settings

Start

You discover that all access review requests are received by Megan Bowen.

You need to ensure that the manager of each department receives the access reviews of their respective department.

Solution: You modify the properties of the IT administrator user accounts. Does this meet the goal?

A. Yes

B. No

Answer: A

Explanation:

Reference:

D18912E1457D5D1DDCBD40AB3BF70D5D

<https://docs.microsoft.com/en-us/azure/active-directory/governance/create-access-review>

NEW QUESTION 93

- (Exam Topic 4)

You need to support the planned changes and meet the technical requirements for MFA.

Which feature should you use, and how long before the users must complete the registration? To answer, select the appropriate options in the answer area.

NOTE: Each correct selection is worth one point.

Answer Area

Feature:
 An authentication method policy
 A Conditional Access policy
 An MFA registration policy
 The Multi-Factor Authentication Server settings

Grace period:
 7 days
 14 days
 28 days

- A. Mastered
 B. Not Mastered

Answer: A

Explanation:

Answer Area

Feature:
 An authentication method policy
 A Conditional Access policy
 An MFA registration policy
 The Multi-Factor Authentication Server settings

Grace period:
 7 days
 14 days
 28 days

NEW QUESTION 95

- (Exam Topic 4)

You configure a new Microsoft 365 tenant to use a default domain name of contoso.com.

You need to ensure that you can control access to Microsoft 365 resources by using conditional access policies.

What should you do first?

- A. Disable the User consent settings.
 B. Disable Security defaults.
 C. Configure a multi-factor authentication (MFA) registration policy.
 D. Configure password protection for Windows Server Active Directory.

Answer: B

Explanation:

Reference:

<https://docs.microsoft.com/en-us/azure/active-directory/fundamentals/concept-fundamentals-security-defaults>

NEW QUESTION 100

- (Exam Topic 4)

You have an Azure AD tenant that contains the users shown in the following table.

Name	User risk level
User1	Low
User2	Medium
User3	High

You have the Azure AD Identity Protection policies shown in the following table.

Type	Users	User risk	Sign-in risk	Controls
User risk policy	All users	Low and above	Unconfigured	Block access
Sign-in risk policy	All users	Unconfigured	High	Block access

You review the Risky users report and the Risky sign-ins report and perform actions for each user as shown in the following table.

User	Action
User1	Confirm user compromised
User2	Confirm sign-in safe
User3	Dismiss user risk
User2	Confirm user compromised

For each of the following statements, select Yes if the statement is true. Otherwise, select No. NOTE: Each correct selection is worth one point.

Answer Area

Statements	Yes	No
User1 can sign in by using multi-factor authentication (MFA).	<input type="radio"/>	<input type="radio"/>
User2 can sign in by using multi-factor authentication (MFA).	<input type="radio"/>	<input type="radio"/>
User3 can sign in from an anonymous IP address.	<input type="radio"/>	<input type="radio"/>

- A. Mastered
- B. Not Mastered

Answer: A

Explanation:

Answer Area

Statements	Yes	No
User1 can sign in by using multi-factor authentication (MFA).	<input type="radio"/>	<input checked="" type="radio"/>
User2 can sign in by using multi-factor authentication (MFA).	<input type="radio"/>	<input checked="" type="radio"/>
User3 can sign in from an anonymous IP address.	<input type="radio"/>	<input checked="" type="radio"/>

NEW QUESTION 102

- (Exam Topic 4)

Your network contains an Active Directory forest named contoso.com that is linked to an Azure Active Directory (Azure AD) tenant named contoso.com by using Azure AD Connect.

You need to prevent the synchronization of users who have the extensionAttribute15 attribute set to NoSync.

What should you do in Azure AD Connect?

- A. Create an inbound synchronization rule for the Windows Azure Active Directory connector.
- B. Configure a Full Import run profile.
- C. Create an inbound synchronization rule for the Active Directory Domain Services connector.
- D. Configure an Export run profile.

Answer: C

Explanation:

<https://docs.microsoft.com/en-us/azure/active-directory/hybrid/how-to-connect-sync-change-the-configuration>

NEW QUESTION 106

- (Exam Topic 4)

You use Azure Monitor to analyze Azure Active Directory (Azure AD) activity logs.

Yon receive more than 100 email alerts each day for tailed Azure AI) user sign-in attempts. You need to ensure that a new security administrator receives the alerts instead of you.

Solution: From Azure monitor, you create a data collection rule. Does this meet the goal?

- A. Yes
- B. No

Answer: B

NEW QUESTION 110

- (Exam Topic 4)

You have an Azure subscription that uses Azure AD Privileged Identity Management (PIM). You need to identify users that are eligible for the Cloud Application Administrator role. Which blade in the Privileged Identity Management settings should you use?

- A. Azure resources
- B. Privileged access groups
- C. Review access
- D. Azure AD roles

Answer: D

NEW QUESTION 115

- (Exam Topic 4)

You have a Microsoft 365 E5 subscription that contains a Microsoft SharePoint Online site named Site!. Site! hosts PDF files. You need to prevent users from printing the files directly from Site!. Which type of policy should you create in the Microsoft Defender for Cloud Apps portal?

- A. activity policy
- B. file policy
- C. access policy
- D. session policy

Answer: D

NEW QUESTION 117

- (Exam Topic 4)

You have an Azure Active Directory (Azure AD) tenant that contains the objects shown in the following table.

Name	Type
User1	User
Guest1	Guest
Identity1	Managed identity

Which objects can you add as eligible in Azure Privileged identity Management (PIM) for an Azure AD role?

- A. User1 only
- B. User1 and Identity1 only
- C. User1, Guest1, and Identity
- D. User1 and Guest1 only

Answer: D

Explanation:

Reference:

<https://docs.microsoft.com/en-us/azure/active-directory/privileged-identity-management/pim-deployment-plan>

NEW QUESTION 122

- (Exam Topic 4)

Note: This question is part of a series of questions that present the same scenario. Each question in the series contains a unique solution that might meet the stated goals. Some question sets might have more than one correct solution, while others might not have a correct solution.

After you answer a question in this section, you will NOT be able to return to it. As a result, these questions will not appear in the review screen.

You use Azure Monitor to analyze Azure Active Directory (Azure AD) activity logs.

You receive more than 100 email alerts each day for failed Azure AD user sign-in attempts. You need to ensure that a new security administrator receives the alerts instead of you. Solution: From Azure AD, you modify the Diagnostics settings.

Does this meet the goal?

- A. Yes
- B. No

Answer: A

NEW QUESTION 125

- (Exam Topic 4)

You have an Azure Active Directory (Azure AD) tenant. You open the risk detections report.

Which risk detection type is classified as a user risk?

- A. impossible travel
- B. anonymous IP address
- C. atypical travel
- D. leaked credentials

Answer: D

Explanation:

Reference:

<https://docs.microsoft.com/en-us/azure/active-directory/identity-protection/concept-identity-protection-risks>

NEW QUESTION 130

- (Exam Topic 4)

You have an Azure AD tenant that contains a user named User1 and the conditional access policies shown in the following table.

Name	Status	Conditional access requirement
CAPolicy1	On	Users connect from a trusted IP address.
CAPolicy2	On	Users' devices are marked as compliant.
CAPolicy3	Report-only	The sign-in risk of users is low.

You need to evaluate which policies will be applied User1 when User1 attempts to sign-in from various IP addresses. Which feature should you use?

- A. Access reviews
- B. Identity Secure Score
- C. The What If tool
- D. the Microsoft 365 network connectivity test tool

Answer: C

NEW QUESTION 132

- (Exam Topic 4)

A user named User1 receives an error message when attempting to access the Microsoft Defender for Cloud Apps portal. You need to identify the cause of the error. The solution must minimize administrative effort. What should you use?

- A. Log Analytics
- B. sign-in logs
- C. audit logs
- D. provisioning logs

Answer: B

NEW QUESTION 134

- (Exam Topic 4)

You create a conditional access policy that blocks access when a user triggers a high-severity sign-in alert. You need to test the policy under the following conditions;

- A user signs in from another country.
- A user triggers a sign-in risk.

What should you use to complete the test?

- A. the Conditional Access What If tool
- B. sign-ins logs in Azure AD
- C. access reviews in Azure AD
- D. the activity logs in Microsoft Defender for Cloud Apps

Answer: A

NEW QUESTION 138

- (Exam Topic 4)

You have 2,500 users who are assigned Microsoft Office 365 Enterprise E3 licenses. The licenses are assigned to individual users. From the Groups blade in the Azure Active Directory admin center, you assign Microsoft 365 Enterprise E5 licenses to the users.

You need to remove the Office 365 Enterprise E3 licenses from the users by using the least amount of administrative effort. What should you use?

- A. the Identity Governance blade in the Azure Active Directory admin center
- B. the Set-AzureAdUser cmdlet
- C. the Licenses blade in the Azure Active Directory admin center
- D. the Set-WindowsProductKey cmdlet

Answer: C

NEW QUESTION 143

- (Exam Topic 4)

Your company recently implemented Azure Active Directory (Azure AD) Privileged Identity Management (PIM).

While you review the roles in PIM, you discover that all 15 users in the IT department at the company have permanent security administrator rights.

You need to ensure that the IT department users only have access to the Security administrator role when required.

What should you configure for the Security administrator role assignment?

- A. Expire eligible assignments after from the Role settings details
- B. Expire active assignments after from the Role settings details
- C. Assignment type to Active
- D. Assignment type to Eligible

Answer: D

Explanation:

Reference:

<https://docs.microsoft.com/en-us/azure/active-directory/privileged-identity-management/pim-configure>

NEW QUESTION 145

- (Exam Topic 4)

You have an Azure subscription that contains an Azure SQL database named db1.

You deploy an Azure App Service web app named App1 that provide product information to users that connect to App1 anonymously.

You need to provide App1 with Access to db1. The solution must meet the following requirements:

* Credentials must only be available to App1.

* Administrative effort must be minimized. Which type of credentials should you use?

- A. a user-assigned managed identity
- B. an Azure AD user account
- C. A SQL Server account
- D. a system-assigned managed identity

Answer: D

NEW QUESTION 148

- (Exam Topic 4)

You have a Microsoft 365 tenant.

The Azure Active Directory (Azure AD) tenant syncs to an on-premises Active Directory domain. The domain contains the servers shown in the following table.

Name	Operating system	Configuration
Server1	Windows Server 2019	Domain controller
Server2	Windows Server 2019	Domain controller
Server3	Windows Server 2019	Azure AD Connect

The domain controllers are prevented from communicating to the internet. You implement Azure AD Password Protection on Server1 and Server2. You deploy a new server named Server4 that runs Windows Server 2019.

You need to ensure that Azure AD Password Protection will continue to work if a single server fails. What should you implement on Server4?

- A. Azure AD Connect
- B. Azure AD Application Proxy
- C. Password Change Notification Service (PCNS)
- D. the Azure AD Password Protection proxy service

Answer: D

Explanation:

Reference:

<https://docs.microsoft.com/en-us/azure/active-directory/authentication/howto-password-ban-bad-on-premisesdep>

NEW QUESTION 150

- (Exam Topic 4)

You have a Microsoft 365 tenant.

All users have mobile phones and laptops.

The users frequently work from remote locations that do not have Wi-Fi access or mobile phone connectivity. While working from the remote locations, the users connect their laptop to a wired network that has internet access.

You plan to implement multi-factor authentication (MFA).

Which MFA authentication method can the users use from the remote location?

- A. a notification through the Microsoft Authenticator app
- B. security questions
- C. voice
- D. an app password

Answer: A

Explanation:

Reference:

<https://docs.microsoft.com/en-us/azure/active-directory/authentication/concept-authentication-authenticator-app>

NEW QUESTION 153

- (Exam Topic 4)

You have an Azure Active Directory (Azure AD) tenant that contains the objects shown in the following table.

Name	Type	Directly assigned license
User1	User	None
User2	User	Microsoft Office 365 Enterprise E5
Group1	Security group	Microsoft Office 365 Enterprise E5
Group2	Microsoft 365 group	None
Group3	Mail-enabled security group	None

Which objects can you add as members to Group3?

- A. User2 and Group2 only
- B. User2, Group1, and Group2 only
- C. User1, User2, Group1 and Group2
- D. User1 and User2 only
- E. User2 only

Answer: E

Explanation:

Reference:

<https://bitsizedbytes.wordpress.com/2018/12/10/distribution-security-and-office-365-groups-nesting/>

NEW QUESTION 154

- (Exam Topic 4)

You have a Microsoft 365 tenant named contoso.com.

Guest user access is enabled.

Users are invited to collaborate with contoso.com as shown in the following table.

User email	User type	Invitation accepted	Shared resource
User1@outlook.com	Guest	No	Enterprise application
User2@fabrikam.com	Guest	Yes	Enterprise application

From the External collaboration settings in the Azure Active Directory admin center, you configure the Collaboration restrictions settings as shown in the following exhibit.

Collaboration restrictions

- ☐ Allow invitations to be sent to any domain (most inclusive)
- ☐ Deny invitations to the specified domains
- ☒ Allow invitations only to the specified domains (most restrictive)

 Delete

☒ TARGET DOMAINS

☐ Outlook.com

From a Microsoft SharePoint Online site, a user invites user3@adatum.com to the site.

For each of the following statements, select Yes if the statement is true. Otherwise, select No. NOTE: Each correct selection is worth one point.

Statements	Yes	No
User1 can accept the invitation and gain access to the enterprise application.	<input type="radio"/>	<input type="radio"/>
User2 can access the enterprise application.	<input type="radio"/>	<input type="radio"/>
User3 can accept the invitation and gain access to the SharePoint site.	<input type="radio"/>	<input type="radio"/>

- A. Mastered
- B. Not Mastered

Answer: A

Explanation:

Box 1: Yes

Invitations can only be sent to outlook.com. Therefore, User1 can accept the invitation and access the application.

Box 2: Yes

Invitations can only be sent to outlook.com. However, User2 has already received and accepted an invitation so User2 can access the application.

Box 3: No

Invitations can only be sent to outlook.com. Therefore, User3 will not receive an invitation.

NEW QUESTION 157

- (Exam Topic 4)

Note: This question is part of a series of questions that present the same scenario. Each question in the series contains a unique solution that might meet the stated goals. Some question sets might have more than one correct solution, while others might not have a correct solution.

After you answer a question in this section, you will NOT be able to return to it. As a result, these questions will not appear in the review screen.

You have a Microsoft 365 tenant.

You have 100 IT administrators who are organized into 10 departments. You create the access review shown in the exhibit. (Click the Exhibit tab.)

Create an access review

Access reviews allow reviewers to attest to whether users still need to be in a role.

Review name *

Description

Start date *

Frequency

Duration (in days)

End ☐ Never ☐ End by ☐ Occurrences

Number of times

End date

Users

Scope ☒ Everyone

Review role membership (permanent and eligible) *

[Application Administrator and 72 others](#)

Reviewers

Reviewers

(Preview) Fallback reviewers

Upon completion settings

Start

You discover that all access review requests are received by Megan Bowen.

You need to ensure that the manager of each department receives the access reviews of their respective department.

Solution: You create a separate access review for each role. Does this meet the goal?

- A. Yes
 B. No

Answer: B

Explanation:

Reference:

<https://docs.microsoft.com/en-us/azure/active-directory/governance/create-access-review>

NEW QUESTION 159

- (Exam Topic 4)

You have a new Microsoft 365 tenant that uses a domain name of contoso.onmicrosoft.com. You register the name contoso.com with a domain registrar.

You need to use contoso.com as the default domain name for new Microsoft 365 users.

Which four actions should you perform in sequence? To answer, move the appropriate actions from the list of actions to the answer area and arrange them in the correct order.

Actions

Delete the contoso.onmicrosoft.com domain.

Register a custom domain name of contoso.com.

Set the domain to primary.

Create a new TXT record in DNS.

Verify the domain name.

Answer Area



- A. Mastered
- B. Not Mastered

Answer: A

Explanation:

Table Description automatically generated with medium confidence

Reference:

<https://practical365.com/configure-a-custom-domain-in-office-365/>

NEW QUESTION 163

- (Exam Topic 4)

You have an Azure AD tenant that contains the users show in the following table.

Name	Usage location	Department	Job title
User1	United States	Sales	Associate
User2	Finland	Sales	SalesRep
User3	Australia	Sales	Manager

You create a dynamic user group and configure the following rule syntax.

```
user.usageLocation -in ["US","AU"] -and (user.department -eq "Sales") -and -not (user.jobTitle -eq "Manager") -or (user.jobTitle -eq "SalesRep")
```

Which users will be added to the group?

- A. User1 only
- B. User2 only
- C. User3 only
- D. User1 and User2 only
- E. User1 and User3 only
- F. User1, User2, and User3

Answer: D

NEW QUESTION 167

- (Exam Topic 4)

You have a hybrid Microsoft 365 subscription that contains the users show in the following table.

Name	Role
Admin1	Global Administrator
Admin2	Application Administrator
Admin3	Cloud Application Administrator
Admin4	Application Developer
User1	None

You plan to deploy an on-premises app1. App1 will be registered in Azure AD and will use Azure AD Application Proxy.

You need to delegate the installation of the Application Proxy connector and ensure that User1 can register App1 in Azure AD. The solution must use the principle of least privilege.

Which user should perform the installation, and which role should you assign to Users1? To answer, select the appropriate options in the answer area.

NOTE: Each correct selection is worth one point.

Answer Area

User that should perform the installation:

Admin3 ▼

Admin1

Admin2

Admin3

Admin4

Assign User1 the role of:

Application Developer ▼

Application Administrator

Application Developer

Cloud Application Administrator

Global Administrator

- A. Mastered
- B. Not Mastered

Answer: A

Explanation:

Answer Area

User that should perform the installation:

Assign User1 the role of:

NEW QUESTION 168

- (Exam Topic 4)

You have a Microsoft 365 E5 subscription.

You need to create a Microsoft Defender for Cloud Apps session policy. What should you do first?

- A. From the Microsoft Defender for Cloud Apps portal, select User monitoring.
- B. From the Microsoft Defender for Cloud Apps portal, select App onboarding/maintenance
- C. From the Azure Active Directory admin center, create a Conditional Access policy.
- D. From the Microsoft Defender for Cloud Apps portal, create a continuous report.

Answer: A

NEW QUESTION 169

- (Exam Topic 4)

Your company has a Microsoft 365 tenant.

All users have computers that run Windows 10 and are joined to the Azure Active Directory (Azure AD) tenant.

The company subscribes to a third-party cloud service named Service1. Service1 supports Azure AD authentication and authorization based on OAuth. Service1 is published to the Azure AD gallery.

You need to recommend a solution to ensure that the users can connect to Service1 without being prompted for authentication. The solution must ensure that the users can access Service1 only from Azure AD-joined computers. The solution must minimize administrative effort.

What should you recommend for each requirement? To answer, select the appropriate options in the answer area.

NOTE: Each correct selection is worth one point.

Ensure that the users can connect to Service1 without being prompted for authentication:

Ensure that the users can access Service1 only from the Azure AD-joined computers:

- A. Mastered
- B. Not Mastered

Answer: A

Explanation:

Graphical user interface, text, application Description automatically generated

Reference:

<https://docs.microsoft.com/en-us/azure/active-directory/develop/active-directory-how-applications-are-added> <https://docs.microsoft.com/en-us/azure/active-directory/conditional-access/require-managed-devices>

NEW QUESTION 174

- (Exam Topic 4)

You have a Microsoft 365 E5 subscription.

You need to create a dynamic user group that will include all the users that do NOT have a department defined in their user profile.

How should you complete the membership rule? To answer, select the appropriate options in the answer area. NOTE: Each correct selection is worth one point.

- Answer Area**

(user.department



-eq
-eq
-match
-ne
-notin

null
null
\$null
"null"

```
signinlogs
| where ResultType == 0
| login_count = count() by Identity
```

- extend
- print
- project
- render
- summarize

| columnchart

- extend
- print
- project
- render
- summarize

- ```
| summarize(loglik = loglik)
```



This query retrieves the sign-in logs, filters the successful sign-ins, summarizes the count of sign-ins per user, and renders the result as a pie chart.  
Box 2 = Render

NEW QUESTION 178

- (Exam Topic 4)

Your network contains an Active Directory forest named contoso.com that is linked to an Azure Active Directory (Azure AD) tenant named contoso.com by using Azure AD Connect.

Attire AD Connect is installed on a server named Server 1.

You deploy a new server named Server2 that runs Windows Server 2019.

You need to implement a failover server for Azure AD Connect. The solution must minimize how long it takes to fail over if Server1 fails.

Which three actions should you perform in sequence? To answer, move the appropriate actions from the list of actions to the answer area and arrange them in the correct order.

Actions

On Server1, run export for all connectors.

On Server2, run export for all connectors.

On Server2, run full import for all connectors.

On Server2, run delta synchronization for all connectors.

On Server2, install Azure AD Connect.

On Server1, configure the staging mode.

>

<

Answer Area

<

>

- A. Mastered
- B. Not Mastered

Answer: A

Explanation:

Actions

On Server1, run export for all connectors.

On Server2, run export for all connectors.

On Server2, run full import for all connectors.

On Server2, run delta synchronization for all connectors.

On Server2, install Azure AD Connect.

On Server1, configure the staging mode.

>

<

Answer Area

On Server2, run export for all connectors.

On Server2, run delta synchronization for all connectors.

On Server1, run export for all connectors.

<

>

NEW QUESTION 183

- (Exam Topic 4)

You have an Azure AD tenant that contains a user named Admin1.

Admin1 uses the Require password change for high-risk user's policy template to create a new Conditional Access policy.

Who is included and excluded by default in the policy assignment? To answer, drag the appropriate options to the correct target. Each option may be used once, more than once, or not at all. You may need to drag the split bar between panes or scroll to view content.

NOTE: Each correct selection is worth one point.

Options

Admin1

All guest and external users

All users

Directory roles

None

Answer Area

Include:

Exclude:

- A. Mastered
- B. Not Mastered

Answer: A

Explanation:

A white background with black text Description automatically generated

NEW QUESTION 184

- (Exam Topic 4)

Note: This question is part of a series of questions that present the same scenario. Each question in the series contains a unique solution that might meet the stated goals. Some question sets might have more than one correct solution, while others might not have a correct solution.

After you answer a question in this section, you will NOT be able to return to it as a result, these questions will not appear in the review screen.

You have an Amazon Web Services (AWS) account, a Google Workspace subscription, and a GitHub account.

You deploy an Azure subscription and enable Microsoft 365 Defender.

You need to ensure that you can monitor OAuth authentication requests by using Microsoft Defender for Cloud Apps.  
Solution: From the Microsoft 365 Defender portal, you add the Google Workspace app connector. Does this meet the goal?

- A. Yes
- B. No

Answer: B

NEW QUESTION 187

- (Exam Topic 4)

You have a Microsoft 365 tenant that has 5,000 users. One hundred of the users are executives. The executives have a dedicated support team. You need to ensure that the support team can reset passwords and manage multi-factor authentication (MFA) settings for only the executives. The solution must use the principle of least privilege.  
Which object type and Azure Active Directory (Azure AD) role should you use? To answer, select the appropriate options in the answer area.  
NOTE: Each correct selection is worth one point.

Answer Area

Object type:

An administrative unit

A custom administrator role

A dynamic group

A Microsoft 365 group

Role:

Authentication administrator

Groups administrator

Helpdesk administrator

Password administrator

- A. Mastered
- B. Not Mastered

Answer: A

Explanation:

Answer Area

Object type:

An administrative unit

A custom administrator role

A dynamic group

A Microsoft 365 group

Role:

Authentication administrator

Groups administrator

Helpdesk administrator

Password administrator

NEW QUESTION 189

- (Exam Topic 4)

Your network contains an on-premises Active Directory Domain Services (AD DS) domain that syncs with Azure AD and contains the users shown in the following table.

| Name  | Organizational unit (OU) |
|-------|--------------------------|
| User1 | OU1                      |
| User2 | OU2                      |

In Azure AD Connect. Domain/OU Filtering is configured as shown in the following exhibit.

Azure AD Connect is configured as shown in the following exhibit.

For each of the following statements, select Yes if the statement is true. Otherwise, select No. NOTE: Each correct selection is worth one point.

Answer Area

Statements

Yes

No

User1 can use self-service password reset (SSPR) to reset his password.

☐
☐

If User1 accesses Microsoft Exchange Online, he will be authenticated by an on-premises domain controller.

☐
☐

User2 can be added to a Microsoft SharePoint Online site as a member.

☐
☐

A. Mastered



B. Not Mastered

**Answer:** A

**Explanation:**

**Answer Area**

| Statements                                                                                                 | Yes                              | No                               |
|------------------------------------------------------------------------------------------------------------|----------------------------------|----------------------------------|
| User1 can use self-service password reset (SSPR) to reset his password.                                    | <input checked="" type="radio"/> | <input type="radio"/>            |
| If User1 accesses Microsoft Exchange Online, he will be authenticated by an on-premises domain controller. | <input type="radio"/>            | <input checked="" type="radio"/> |
| User2 can be added to a Microsoft SharePoint Online site as a member.                                      | <input checked="" type="radio"/> | <input type="radio"/>            |

#### NEW QUESTION 191

- (Exam Topic 4)

You plan to deploy a new Azure AD tenant.

Which multifactor authentication (MFA) method will be enabled by default for the tenant?

- A. Microsoft Authenticator
- B. SMS
- C. voice call
- D. email OTP

**Answer:** B

#### NEW QUESTION 193

- (Exam Topic 4)

You have a Microsoft 365 E5 subscription that contains a web app named App1. Guest users are regularly granted access to App1.

You need to ensure that the guest users that have NOT accessed App1 during the past 30 days have their access removed the solution must minimize administrative effort.

What should you configure?

- A. a compliance policy
- B. an access review for application access
- C. a guest access review
- D. a Conditional Access policy

**Answer:** C

#### NEW QUESTION 196

- (Exam Topic 4)

HOTSPOT

You have an Azure Active Directory (Azure AD) tenant named contoso.com that contains a user named User1.

User1 has the devices shown in the following table.

| Name    | Platform   | Registered in contoso.com |
|---------|------------|---------------------------|
| Device1 | Windows 10 | Yes                       |
| Device2 | Windows 10 | No                        |
| Device3 | iOS        | Yes                       |

On November 5, 2020, you create and enforce terms of use in contoso.com that has the following settings: ➤ Name: Terms1

- Display name: Contoso terms of use
- Require users to expand the terms of use: On
- Require users to consent on every device: On
- Expire consents: On
- Expire starting on: December 10, 2020
- Frequency: Monthly

On November 15, 2020, User1 accepts Terms1 on Device3.

For each of the following statements, select Yes if the statement is true. Otherwise, select No. NOTE: Each correct selection is worth one point.



| Statements                                                | Yes                   | No                    |
|-----------------------------------------------------------|-----------------------|-----------------------|
| On November 20, 2020, User1 can accept Terms1 on Device1. | <input type="radio"/> | <input type="radio"/> |
| On December 11, 2020, User1 can accept Terms1 on Device2. | <input type="radio"/> | <input type="radio"/> |
| On December 7, 2020, User1 can accept Terms1 on Device3.  | <input type="radio"/> | <input type="radio"/> |

- A. Mastered
- B. Not Mastered

Answer: A

Explanation:

| Statements                                                | Yes                              | No                               |
|-----------------------------------------------------------|----------------------------------|----------------------------------|
| On November 20, 2020, User1 can accept Terms1 on Device1. | <input checked="" type="radio"/> | <input type="radio"/>            |
| On December 11, 2020, User1 can accept Terms1 on Device2. | <input checked="" type="radio"/> | <input type="radio"/>            |
| On December 7, 2020, User1 can accept Terms1 on Device3.  | <input type="radio"/>            | <input checked="" type="radio"/> |

NEW QUESTION 197

- (Exam Topic 4)

Your on-premises network contains an Active Directory domain that uses Azure AD Connect to sync with an Azure AD tenant. You need to configure Azure AD Connect to meet the following requirements:

- User sign-ins to Azure AD must be authenticated by an Active Directory domain controller.
- Active Directory domain users must be able to use Azure AD self-service password reset (SSPR). What should you use for each requirement? To answer, select the appropriate options in the answer area. NOTE: Each correct selection is worth one point.

Answer Area

Authentication by the domain controller:

Federation with Active Directory Federation Services (AD FS)

Federation with Active Directory Federation Services (AD FS)

Pass-through authentication

Password hash synchronization

SSPR:

Password hash synchronization

Device writeback

Group writeback

Password hash synchronization

Password writeback

- A. Mastered
- B. Not Mastered

Answer: A

Explanation:

Authentication by the domain controller:

- Federation with Active Directory Federation Services (AD FS)
- Federation with Active Directory Federation Services (AD FS)
- Pass-through authentication
- Password hash synchronization

SSPR:

- Password hash synchronization
- Device writeback
- Group writeback
- Password hash synchronization
- Password writeback

You have a custom cloud app named App1 that is registered in Azure Active Directory (Azure AD). App1 is configured as shown in the following exhibit.

Use the drop-down menus to select the answer choice that completes each statement based on the information presented in the graphic.  
NOTE: Each correct selection is worth one point.

☐ All users  
☐ No one  
☐ Only users listed on the Owners blade  
☐ Only users listed on the Users and groups blade

- all users
- no one
- only users listed on the Owners blade
- only users listed on the Users and groups blade

- <https://docs.microsoft.com/en-us/azure/active-directory/manage-apps/assign-user-or-group-access-portal>

The Sign-ins activity report shows that an external contractor signed in to the Exchange admin center. You need to review access to the Exchange admin center at



the end of each month and block sign-ins if required.  
What should you create?

- A. an access package that targets users outside your directory
- B. an access package that targets users in your directory
- C. a group-based access review that targets guest users
- D. an application-based access review that targets guest users

**Answer:** C

**Explanation:**

Reference:  
<https://docs.microsoft.com/en-us/azure/active-directory/governance/access-reviews-overview>

**NEW QUESTION 204**

- (Exam Topic 4)

You have an Azure Active Directory (Azure AD) tenant named contoso.com that has Azure AD Identity Protection policies enforced. You create an Azure Sentinel instance and configure the Azure Active Directory connector. You need to ensure that Azure Sentinel can generate incidents based on the risk alerts raised by Azure AD Identity Protection. What should you do first?

- A. Add an Azure Sentinel data connector.
- B. Configure the Notify settings in Azure AD Identity Protection.
- C. Create an Azure Sentinel playbook.
- D. Modify the Diagnostics settings in Azure AD.

**Answer:** A

**Explanation:**

Reference:  
<https://docs.microsoft.com/en-us/azure/sentinel/connect-azure-ad-identity-protection>

**NEW QUESTION 205**

- (Exam Topic 4)

You have an Azure AD tenant that contains the users shown in the following table.

| Name  | Role                                    |
|-------|-----------------------------------------|
| User1 | Security administrator                  |
| User2 | Privileged authentication administrator |
| User3 | Service support administrator           |

User2 reports that he can only configure multi-factor authenticating (MFA) to use the Microsoft Authenticator app. You need to ensure that User2 can configure alternate MFA methods.

Which configuration is required, and which user should perform the configuration? To answer, select the appropriate options in the answer area.

**Answer Area**

Configuration:

|                                                       |   |
|-------------------------------------------------------|---|
|                                                       | ▼ |
| Enable access reviews.                                |   |
| Enable Azure AD Privileged Identity Management (PIM). |   |
| Modify security defaults.                             |   |

User:

|                      |   |
|----------------------|---|
|                      | ▼ |
| User1 only           |   |
| User2 only           |   |
| User3 only           |   |
| User1 and User2 only |   |
| User1 and User3 only |   |
| User2 and User3 only |   |

- A. Mastered
- B. Not Mastered

**Answer:** A

**Explanation:**

## Answer Area

Configuration:

▼

|                                                       |
|-------------------------------------------------------|
| Enable access reviews.                                |
| Enable Azure AD Privileged Identity Management (PIM). |
| Modify security defaults.                             |

User:

▼

|                      |
|----------------------|
| User1 only           |
| User2 only           |
| User3 only           |
| User1 and User2 only |
| User1 and User3 only |
| User2 and User3 only |

### NEW QUESTION 206

- (Exam Topic 4)

You have a Microsoft 365 E5 subscription that contains the users shown in the following table.

| Name  | Member of administrative unit          |
|-------|----------------------------------------|
| User1 | AU1                                    |
| User2 | AU1                                    |
| User3 | AU1                                    |
| User4 | AU2                                    |
| User5 | Not a member of an administrative unit |

The users are assigned the roles shown in the following table.

| User  | Role                   | Role scope     |
|-------|------------------------|----------------|
| User1 | Password Administrator | Organization   |
| User2 | Global Reader          | Organization   |
| User3 | None                   | Not applicable |
| User4 | Password Administrator | AU1            |
| User5 | None                   | Not applicable |

For which users can User1 and User4 reset passwords? To answer, select the appropriate options in the answer area.

NOTE: Each correct selection is worth one point.

## Answer Area

User1: 

User3 only

User4: 

User3 only

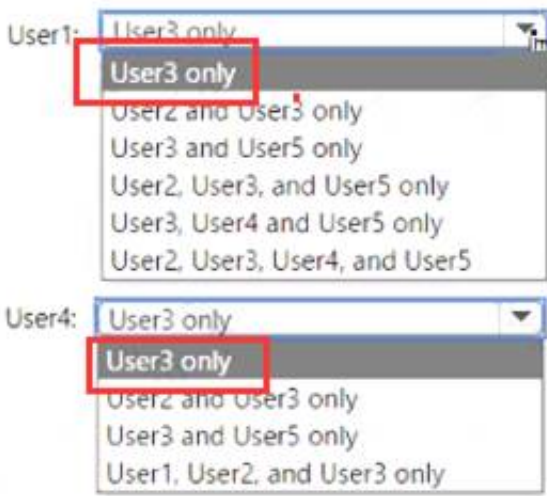
- A. Mastered
- B. Not Mastered

Answer: A

Explanation:



Answer Area



NEW QUESTION 210

- (Exam Topic 4)

You have an Azure Active Directory (Azure AD) tenant that contains the users shown in the following table.

| Name  | Type   | Member of |
|-------|--------|-----------|
| User1 | Member | Group1    |
| User2 | Member | Group1    |
| User3 | Guest  | Group1    |

User1 is the owner of Group1.

You create an access review that has the following settings:

- > Users to review: Members of a group
- > Scope: Everyone
- > Group: Group1
- > Reviewers: Members (self)

Which users can perform access reviews for User3?

- A. User1, User2, and User3
- B. User3 only
- C. User1 only
- D. User1 and User2 only

Answer: B

NEW QUESTION 212

- (Exam Topic 4)

Note: This question is part of a series of questions that present the same scenario. Each question in the series contains a unique solution that might meet the stated goals. Some question sets might have more than one correct solution, while others might not have a correct solution.

After you answer a question in this section, you will NOT be able to return to it. As a result, these questions will not appear in the review screen.

You have an Azure Active Directory (Azure AD) tenant that syncs to an Active Directory forest.

You discover that when a user account is disabled in Active Directory, the disabled user can still authenticate to Azure AD for up to 30 minutes.

You need to ensure that when a user account is disabled in Active Directory, the user account is immediately prevented from authenticating to Azure AD.

Solution: You configure conditional access policies. Does this meet the goal?

- A. Yes
- B. No

Answer: B

Explanation:

Reference:

<https://docs.microsoft.com/en-us/azure/active-directory/hybrid/choose-ad-authn>

NEW QUESTION 217

- (Exam Topic 4)

Your network contains an on-premises Active Directory domain that sync to an Azure Active Directory (Azure AD) tenant. The tenant contains the shown in the following table.

| Name  | Type  | Directory synced |
|-------|-------|------------------|
| User1 | User  | No               |
| User2 | User  | Yes              |
| User3 | Guest | No               |

All the users work remotely.

Azure AD Connect is configured in Azure as shown in the following exhibit.

# PROVISION FROM ACTIVE DIRECTORY



## Azure AD Connect cloud provisioning

This feature allows you to manage provisioning from the cloud.

[Manage provisioning \(Preview\)](#)

### Azure AD Connect sync

|                    |                      |
|--------------------|----------------------|
| Sync Status        | Enabled              |
| Last Sync          | Less than 1 hour ago |
| Password Hash Sync | Enabled              |

# USER SIGN IN



|                             |          |           |
|-----------------------------|----------|-----------|
| Federation                  | Disabled | 0 domains |
| Seamless single sign-on     | Disabled | 0 domains |
| Pass-through authentication | Enabled  | 2 agents  |

Connectivity from the on-premises domain to the internet is lost. Which user can sign in to Azure AD?

- A. User1 only
- B. User1 and User 3 only
- C. User1, and User2 only
- D. User1, User2, and User3

Answer: B

## NEW QUESTION 218

- (Exam Topic 4)

You have an Azure subscription that contains the key vaults shown in the following table.

| Name      | In resource group | Number of days to retain deleted key vaults | Purge protection |
|-----------|-------------------|---------------------------------------------|------------------|
| KeyVault1 | RG1               | 15                                          | Enabled          |
| KeyVault2 | RG1               | 10                                          | Disabled         |

The subscription contains the users shown in the following table.

| Name   | Role                           |
|--------|--------------------------------|
| Admin1 | Key Vault Administrator        |
| Admin2 | Key Vault Contributor          |
| Admin3 | Key Vault Certificates Officer |
| Admin4 | Owner                          |

On June1, Admin4 performs the following actions:

- Deletes a certificate named Certificate1 from Key Vault1
- Deletes a secret named Secret1 from KeyVault2

For each of the following statements, select Yes if the statement is true. Otherwise, select No. NOTE: Each correct selection is worth one point.

Answer Area

| Statements                                | Yes                   | No                    |
|-------------------------------------------|-----------------------|-----------------------|
| Admin1 can recover Secret1 on June 7.     | <input type="radio"/> | <input type="radio"/> |
| Admin2 can purge Certificate1 on June 12. | <input type="radio"/> | <input type="radio"/> |
| Admin3 can purge Certificate1 on June 14. | <input type="radio"/> | <input type="radio"/> |

- A. Mastered
- B. Not Mastered

Answer: A

Explanation:

Answer Area

| Statements                                | Yes                              | No                               |
|-------------------------------------------|----------------------------------|----------------------------------|
| Admin1 can recover Secret1 on June 7.     | <input checked="" type="radio"/> | <input type="radio"/>            |
| Admin2 can purge Certificate1 on June 12. | <input type="radio"/>            | <input checked="" type="radio"/> |
| Admin3 can purge Certificate1 on June 14. | <input type="radio"/>            | <input checked="" type="radio"/> |

NEW QUESTION 221

- (Exam Topic 4)

You have an Azure Active Directory (Azure AD) tenant named contoso.com.

You plan to bulk invite Azure AD business-to-business (B2B) collaboration users.

Which two parameters must you include when you create the bulk invite? Each correct answer presents part of the solution

NOTE: Each correct selection is worth one point.

- A. email address
- B. redirection URL
- C. username
- D. shared key
- E. password

Answer: AB

Explanation:

Reference:

<https://docs.microsoft.com/en-us/azure/active-directory/external-identities/tutorial-bulk-invite>

NEW QUESTION 223

- (Exam Topic 4)

Your network contains an on-premises Active Directory domain that syncs to an Azure Active Directory (Azure AD) tenant

Users sign in to computers that run Windows 10 and are joined to the domain.

You plan to implement Azure AD Seamless Single Sign-On (Azure AD Seamless SSO). You need to configure the computers for Azure AD Seamless SSO.

What should you do?

- A. Enable Enterprise State Roaming.
- B. Configure Sign-in options.
- C. Install the Azure AD Connect Authentication Agent.
- D. Modify the Intranet Zone settings.

Answer: D

Explanation:

Reference:

<https://docs.microsoft.com/en-us/azure/active-directory/hybrid/how-to-connect-sso-quick-start>

#### NEW QUESTION 225

- (Exam Topic 4)

You have a Microsoft 365 E5 subscription that contains a Microsoft SharePoint Online site named Site1. You need to ensure that users can request access to Site. the solution must meet the following requirements.

- Automatically approve requests from users based on their group membership.
- Automatically remove the access after 30 days What should you do?

- A. Create a Conditional Access policy.
- B. Create an access package.
- C. Configure Role settings in Azure AD Privileged Identity Management.
- D. Create a Microsoft Defender for Cloud Apps access policy.

**Answer: B**

#### NEW QUESTION 227

- (Exam Topic 4)

You have a Microsoft 365 tenant.

You need to Identity users who have leaked credentials. The solution must meet the following requirements:

- Identity sign-ins by users who are suspected of having leaked credentials.
- Flag the sign-ins as a high-risk event.
- Immediately enforce a control to mitigate the risk, while still allowing the user to access applications. What should you use? To answer, select the appropriate options in the answer area.

To classify leaked credentials as high-risk, use:

|                                                                        |
|------------------------------------------------------------------------|
| Azure Active Directory (Azure AD) Identity Protection                  |
| Azure Active Directory (Azure AD) Privileged Identity Management (PIM) |
| Identity Governance                                                    |
| Self-service password reset (SSPR)                                     |

To trigger remediation, use:

|                                             |
|---------------------------------------------|
| Client apps not using Modern authentication |
| Device state                                |
| Sign-in risk                                |
| User location                               |
| User risk                                   |

To mitigate the risk, select:

|                                                |
|------------------------------------------------|
| Apply app enforced restrictions                |
| Block access                                   |
| Grant access but require app protection policy |
| Grant access but require password change       |

- A. Mastered
- B. Not Mastered

**Answer: A**

**Explanation:**

To classify leaked credentials as high-risk, use:

|                                                                        |
|------------------------------------------------------------------------|
| Azure Active Directory (Azure AD) Identity Protection                  |
| Azure Active Directory (Azure AD) Privileged Identity Management (PIM) |
| Identity Governance                                                    |
| Self-service password reset (SSPR)                                     |

To trigger remediation, use:

|                                             |
|---------------------------------------------|
| Client apps not using Modern authentication |
| Device state                                |
| Sign-in risk                                |
| User location                               |
| User risk                                   |

To mitigate the risk, select:

|                                                |
|------------------------------------------------|
| Apply app enforced restrictions                |
| Block access                                   |
| Grant access but require app protection policy |
| Grant access but require password change       |

#### NEW QUESTION 230

- (Exam Topic 4)

You have a Microsoft 365 tenant.

Sometimes, users use external, third-party applications that require limited access to the Microsoft 365 data of the respective user. The users register the applications in Azure Active Directory (Azure AD).

You need to receive an alert if a registered application gains read and write access to the users' email. What should you do? To answer, select the appropriate options in the answer area.

NOTE: Each correct selection is worth one point.



Tool to use:

- Azure AD Identity Protection
- Identity Governance
- Microsoft Cloud App Security
- Microsoft Endpoint Manager

Policy type to create:

- App discovery
- App protection
- Conditional access
- OAuth app
- Sign-in risk
- User risk

- A. Mastered  
 B. Not Mastered

**Answer:** A

**Explanation:**

Reference:

<https://docs.microsoft.com/en-us/cloud-app-security/app-permission-policy>

**NEW QUESTION 233**

- (Exam Topic 4)

You have an Azure AD tenant named contoso.com that contains the resources shown in the following table. You create a user named Admin 1.

| Name      | Description               |
|-----------|---------------------------|
| Au1       | Administrative unit       |
| CAPolicy1 | Conditional Access policy |
| Package1  | Access package            |

You need to ensure that Admin can enable Security defaults for contoso.com. What should you do first?

- A. Configure Identity Governance.  
 B. Delete Package1.  
 C. Delete CAPolicy1.  
 D. Assign Admin1 the Authentication administrator role for Au1

**Answer:** D

**Explanation:**

To enable Security defaults for contoso.com, you should first sign in to the Azure portal as a security administrator, Conditional Access administrator, or global administrator. Then, browse to Azure Active Directory > Properties and select Manage security defaults. Set the Enable security defaults toggle to Y select Save. After that, you can assign Admin1 the Identity Administrator role for Au1 to enable them to manage security defaults for the tenant.

<https://practical365.com/what-are-azure-ad-security-defaults-and-should-you-use-them/>

**NEW QUESTION 237**

- (Exam Topic 4)

You have a Microsoft 365 E5 subscription that contains three users named User1, User2, and User3. You need to configure the users as shown in the following table.

| User  | Configuration                                                                                                                                                 |
|-------|---------------------------------------------------------------------------------------------------------------------------------------------------------------|
| User1 | <ul style="list-style-type: none"> <li>User administrator role</li> <li>Device Administrators role</li> <li>Identity Governance Administrator role</li> </ul> |
| User2 | <ul style="list-style-type: none"> <li>Records Management role</li> <li>Quarantine Administrator role group</li> </ul>                                        |
| User3 | <ul style="list-style-type: none"> <li>Endpoint Security Manager role</li> <li>Intune Role Administrator role</li> </ul>                                      |

Which portal should you use to configure each user? To answer, drag the appropriate portals to the correct users. Each portal may be used once, more than once, or not at all. You may need to drag the split bar between panes or scroll to view content.

NOTE: Each correct selection is worth one point.

Portals

Azure Active Directory admin center

Exchange admin center

Microsoft 365 compliance center

Microsoft Endpoint Manager admin center

SharePoint admin center

Answer Area

User1:

User2:

User3:

- A. Mastered
- B. Not Mastered

Answer: A

Explanation:  
Graphical user interface, text, application Description automatically generated

NEW QUESTION 241  
- (Exam Topic 4)  
You have an Azure AD tenant that contains the users shown in the following table.

| Name  | Member of |
|-------|-----------|
| User1 | Group1    |
| User2 | Group2    |
| User3 | Group3    |

The tenant has the authentication methods shown in the following table.

| Method                      | Target | Enabled |
|-----------------------------|--------|---------|
| FIDO2                       | Group2 | Yes     |
| Microsoft Authenticator app | Group1 | Yes     |
| SMS                         | Group3 | Yes     |

Which users will sign in to cloud apps by matching a number shown in the app with a number shown on their phone?

- A. User1 only
- B. User2 only
- C. User3 only
- D. User1 and User2 only
- E. User2 and User3 only

Answer: D

NEW QUESTION 242  
- (Exam Topic 4)  
You have an Azure subscription that contains a user named User1. You need to meet the following requirements:

- Prevent User1 from being added as an owner of newly registered apps.
- Ensure that User1 can manage the application proxy settings.
- Ensure that User2 can register apps.
- Use the principle of least privilege. Which role should you assign to User1?

- A. Application developer
- B. Cloud application administrator
- C. Service support administrator
- D. Application administrator

Answer: D

NEW QUESTION 243  
- (Exam Topic 4)  
You have a Microsoft 365 E5 subscription that contains two users named User1 and User2. You need to ensure that User1 can create access reviews for groups, and that User2 can review the history report for all the completed access reviews. The solution must use the principle of least privilege. Which role should you assign to each user? To answer, drag the appropriate roles to the correct users. Each role may be used once, more than once, or not at all. You may need to drag the split bar between panes or scroll to view content  
NOTE: Each correct selection is worth one point.

Roles

Global administrator

Global reader

Reports reader

Security operator

Security reader

User administrator

Answer Area

User1: 

Role

User2: 

Role

- A. Mastered
- B. Not Mastered

Answer: A

Explanation:

Roles

Global administrator

Global reader

Reports reader

Security operator

Security reader

User administrator

Answer Area

User1: 

Global administrator

User2: 

Global reader

NEW QUESTION 244

- (Exam Topic 4)

You have an Azure AD tenant and an Azure web app named App1.

You need to provide guest users with self-service sign-up for App1. The solution must meet the following requirements:

- Guest users must be able to sign up by using a one-time password.
- The users must provide their first name, last name, city, and email address during the sign-up process. What should you configure in the Azure Active Directory admin center for each requirement? To answer, select the appropriate options in the answer area.

NOTE: Each correct selection is worth one point.

Answer Area

One-time password: 

A linked subscription

An identity provider

Azure AD Privileged Identity Management (PIM)

The External collaboration settings

User details: 

A user flow

Access reviews

An access package

The tenant properties

- A. Mastered
- B. Not Mastered

Answer: A



Explanation:

Answer Area

One-time password:

A linked subscription  
An identity provider  
Azure AD Privileged Identity Management (PIM)  
The External collaboration settings

User details:

A user flow  
Access reviews  
An access package  
The tenant properties

NEW QUESTION 248

- (Exam Topic 4)  
You have an Azure subscription.  
From Entitlement management, you plan to create a catalog named Catalog1 that will contain a custom extension.  
What should you create first and what should you use to distribute Catalog1? To answer, select the appropriate options in the answer area.  
NOTE: Each correct selection is worth one point.

Answer Area

First create:

An Azure Automation account  
A managed account  
An Azure Automation account  
An Azure logic app

Distribute Catalog1 by using:

A playbook  
A playbook  
A workflow  
An access package

- A. Mastered
- B. Not Mastered

Answer: A

Explanation:

Answer Area

First create:

An Azure Automation account  
A managed account  
An Azure Automation account  
An Azure logic app

Distribute Catalog1 by using:

A playbook  
A playbook  
A workflow  
An access package

NEW QUESTION 252

- (Exam Topic 4)  
Note: This question is part of a series of questions that present the same scenario. Each question in the series contains a unique solution that might meet the stated goals. Some question sets might have more than one correct solution, while others might not have a correct solution.  
After you answer a question in this section, you will NOT be able to return to it as a result these questions will not appear in the review screen.  
You have a Microsoft 365 E5 subscription. You create a user named User1.  
You need to ensure that User1 can update the status of identity Secure Score improvement actions. Solution: You assign the SharePoint Administrator role to User1  
Does this meet the goal?

- A. Yes
- B. No



**Answer:** B

**NEW QUESTION 257**

- (Exam Topic 4)

You have a Microsoft 365 tenant.

The Azure Active Directory (Azure AD) tenant syncs to an on-premises Active Directory domain.

Users connect to the internet by using a hardware firewall at your company. The users authenticate to the firewall by using their Active Directory credentials.

You plan to manage access to external applications by using Azure AD.

You need to use the firewall logs to create a list of unmanaged external applications and the users who access them.

What should you use to gather the information?

- A. Application Insights in Azure Monitor
- B. access reviews in Azure AD
- C. Cloud App Discovery in Microsoft Cloud App Security
- D. enterprise applications in Azure AD

**Answer:** C

**Explanation:**

Reference:

<https://docs.microsoft.com/en-us/cloud-app-security/create-snapshot-cloud-discovery-reports#using-traffic-logs>

**NEW QUESTION 259**

- (Exam Topic 4)

You have an Azure Active Directory (Azure AD) tenant named contoso.com.

You implement entitlement management to provide resource access to users at a company named Fabrikam, Inc. Fabrikam uses a domain named fabrikam.com.

Fabrikam users must be removed automatically from the tenant when access is no longer required. You need to configure the following settings:

- Block external user from signing in to this directory: No
- Remove external user: Yes
- Number of days before removing external user from this directory: 90

What should you configure on the Identity Governance blade?

- A. Access packages
- B. Entitlement management settings
- C. Terms of use
- D. Access reviews setting

**Answer:** B

**Explanation:**

Reference:

<https://docs.microsoft.com/en-us/azure/active-directory/governance/entitlement-management-external-users>

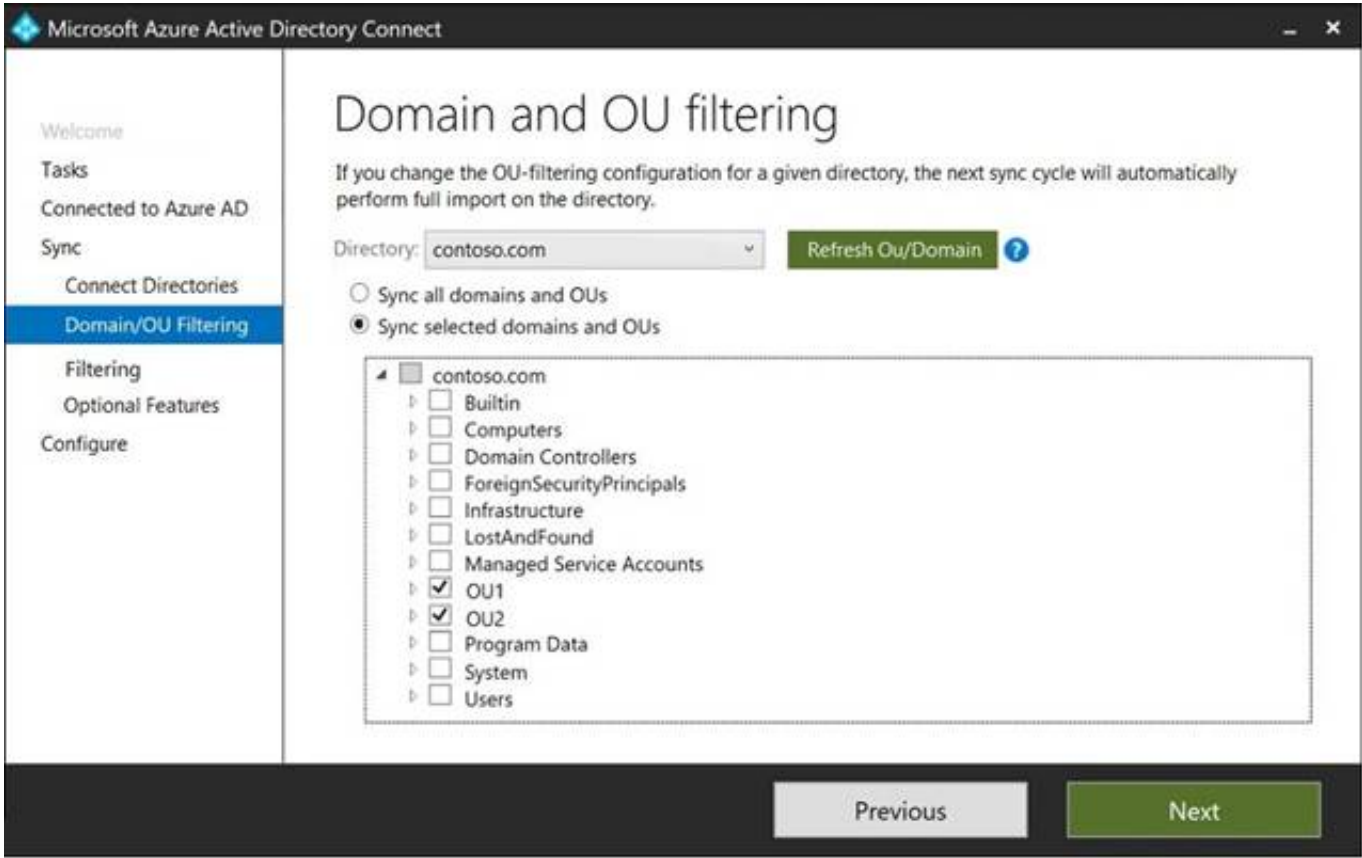
**NEW QUESTION 261**

- (Exam Topic 4)

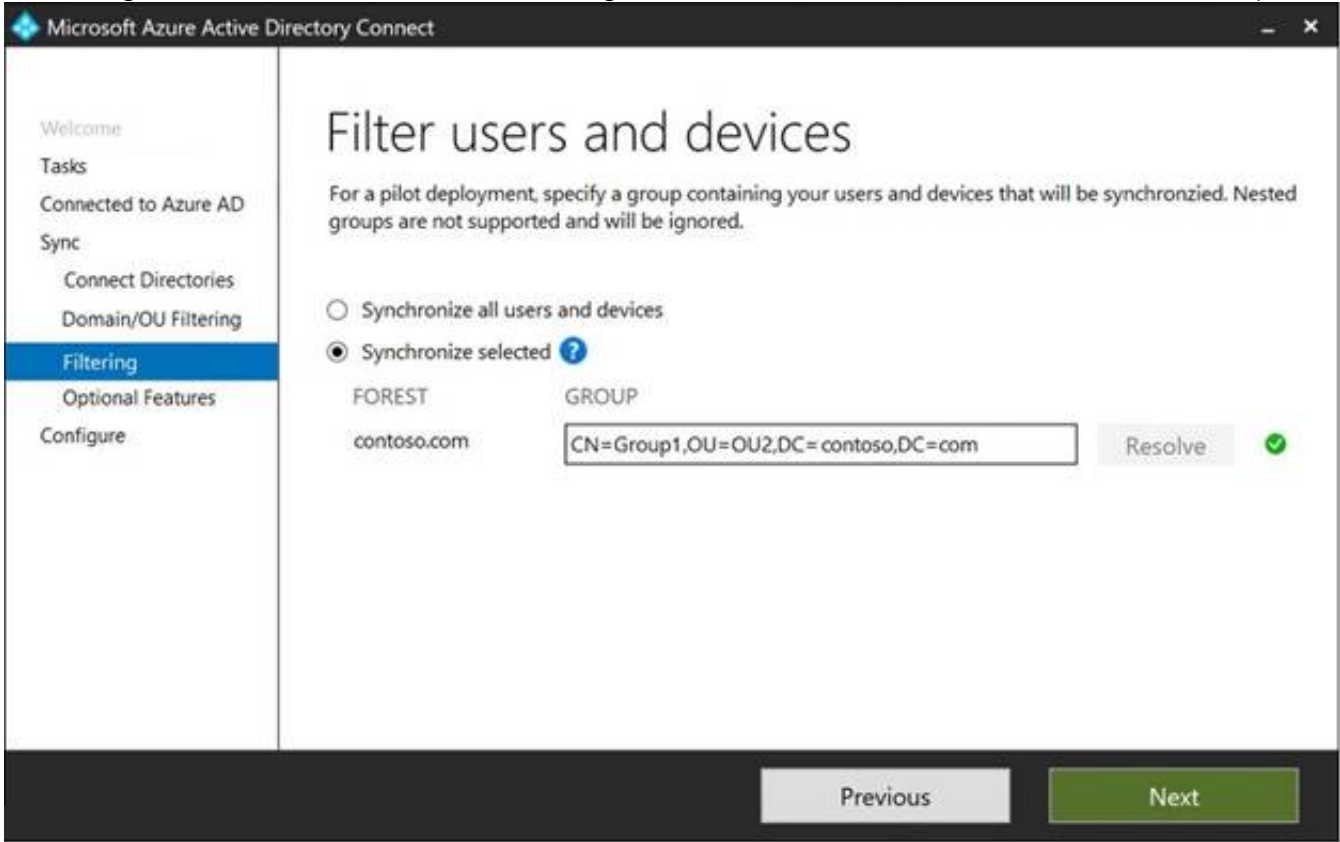
Your network contains an on-premises Active Directory domain named contoso.com. The domain contains the objects shown in the following table.

| Name   | Type           | In organizational unit (OU) | Description                             |
|--------|----------------|-----------------------------|-----------------------------------------|
| User1  | User           | OU1                         | User1 is a member of Group1.            |
| User2  | User           | OU1                         | User2 is not a member of any groups.    |
| Group1 | Security group | OU2                         | User1 and Group2 are members of Group1. |
| Group2 | Security group | OU1                         | Group2 is a member of Group1.           |

You install Azure AD Connect. You configure the Domain and OU filtering settings as shown in the Domain and OU Filtering exhibit. (Click the Domain and OU Filtering tab.)



You configure the Filter users and devices settings as shown in the Filter Users and Devices exhibit. (Click the Filter Users and Devices tab.)



For each of the following statements, select Yes if the statement is true. Otherwise, select No.

| Statements                | Yes                   | No                    |
|---------------------------|-----------------------|-----------------------|
| User1 syncs to Azure AD.  | <input type="radio"/> | <input type="radio"/> |
| User2 syncs to Azure AD.  | <input type="radio"/> | <input type="radio"/> |
| Group2 syncs to Azure AD. | <input type="radio"/> | <input type="radio"/> |

- A. Mastered
- B. Not Mastered

Answer: A

Explanation:

Graphical user interface, application Description automatically generated  
Only direct members of Group1 are synced. Group2 will sync as it is a direct member of Group1 but the members of Group2 will not sync.  
Reference:  
<https://docs.microsoft.com/en-us/azure/active-directory/hybrid/how-to-connect-install-custom>

NEW QUESTION 265

- (Exam Topic 4)

You have a Microsoft 365 tenant and an Active Directory domain named adatum.com. You deploy Azure AD Connect by using the Express Settings.

You need to configure self-service password reset (SSPR) to meet the following requirements:

- > When users reset their password, they must be prompted to respond to a mobile app notification or answer three predefined security questions.
- > Passwords must be synced between the tenant and the domain regardless of where the password was reset.

What should you do? To answer, select the appropriate options in the answer area.

NOTE: Each correct selection is worth one point.

From the Password reset blade in the Azure Active Directory admin center, configure:

▼

Authentication methods

Notifications

Properties

Registration

From Azure AD Connect, enable:

▼

Federation with Active Directory Federation Services (AD FS)

Pass-through authentication

Password hash synchronization

Password writeback

- A. Mastered
- B. Not Mastered

Answer: A

Explanation:

Graphical user interface, text, application Description automatically generated

Reference:

<https://docs.microsoft.com/en-us/azure/active-directory/authentication/howto-sspr-deployment> <https://docs.microsoft.com/en-us/azure/active-directory/authentication/concept-authentication-security-questions>

NEW QUESTION 268

- (Exam Topic 4)

You have an Azure Active Directory (Azure AD) tenant that contains the groups shown in the following table.

| Name   | Type          | Membership type |
|--------|---------------|-----------------|
| Group1 | Security      | Assigned        |
| Group2 | Security      | Dynamic User    |
| Group3 | Security      | Dynamic Device  |
| Group4 | Microsoft 365 | Assigned        |
| Group5 | Microsoft 365 | Dynamic User    |

For which groups can you create an access review?

- A. Group1 only
- B. Group1 and Group4 only
- C. Group1 and Group2 only
- D. Group1, Group2, Group4, and Group5 only
- E. Group1, Group2, Group3, Group4 and Group5

Answer: D

Explanation:

You cannot create access reviews for device groups. Reference:

<https://docs.microsoft.com/en-us/azure/active-directory/governance/create-access-review>

NEW QUESTION 273

- (Exam Topic 4)

You configure Azure Active Directory (Azure AD) Password Protection as shown in the exhibit. (Click the Exhibit tab.)

### Custom smart lockout

Lockout threshold ⓘ  ✓

Lockout duration in seconds ⓘ  ✓

### Custom banned passwords

Enforce custom list ⓘ ☒ Yes ☐ No

Custom banned password list ⓘ  ✓

### Password protection for Windows Server Active Directory

Enable password protection on Windows Server Active Directory ⓘ ☒ Yes ☐ No

Mode ⓘ ☒ Enforced ☐ Audit

You are evaluating the following passwords:

- > Pr0jectlitw@re
- > T@ilw1nd
- > C0nt0s0

Which passwords will be blocked?

- A. Pr0jectlitw@re and T@ilw1nd only
- B. C0nt0s0 only
- C. C0nt0s0, Pr0jectlitw@re, and T@ilw1nd
- D. C0nt0s0 and T@ilw1nd only
- E. C0nt0s0 and Pr0jectlitw@re only

**Answer: C**

#### Explanation:

Reference:  
<https://blog.enablingtechcorp.com/azure-ad-password-protection-password-evaluation>

### NEW QUESTION 277

- (Exam Topic 4)

You have an Azure subscription that contains the resources shown in the following table.

| Name        | Type                                                        |
|-------------|-------------------------------------------------------------|
| Group1      | Group that has the Assigned membership type                 |
| App1        | Enterprise application in Azure Active Directory (Azure AD) |
| Contributor | Azure subscription role                                     |
| Role1       | Azure Active Directory (Azure AD) role                      |

For which resources can you create an access review?

- A. Group1, App1, Contributor, and Role1
- B. Hotel and Contributor only
- C. Group1, Role1, and Contributor only
- D. Group1 only

**Answer: A**

#### Explanation:

Access reviews require an Azure AD Premium P2 license.  
 Access reviews for Group1 and App1 can be configured in Azure AD Access Reviews.  
 Access reviews for the Contributor role and Role1 would need to be configured in Privileged Identity Management (PIM). PIM is included in Azure AD Premium P2.  
 Reference:  
<https://docs.microsoft.com/en-us/azure/active-directory/privileged-identity-management/pim-how-to-start-securi> <https://docs.microsoft.com/en-us/azure/active-directory/governance/access-reviews-overview>

### NEW QUESTION 278

- (Exam Topic 4)

You have an Azure subscription that contains the following virtual machine Name: VM1  
 Azure region: East US



System-assigned managed identity: Disabled  
 You create the managed identities shown in the following table.

| Name     | Location |
|----------|----------|
| Managed1 | East US  |
| Managed2 | East US  |
| Managed3 | West US  |

You perform the following actions:

- Assign Managed1 to VM1.
- Create a resource group named RG1 in the West US region.

For each of the following statements, select Yes if the statement is true. Otherwise, select No. NOTE: Each correct selection is worth one point.

**Answer Area**

| Statements                                 | Yes                   | No                    |
|--------------------------------------------|-----------------------|-----------------------|
| You can assign Managed2 to V1.             | <input type="radio"/> | <input type="radio"/> |
| You can assign Managed3 to V1.             | <input type="radio"/> | <input type="radio"/> |
| You can assign VM1 the Owner role for RG1. | <input type="radio"/> | <input type="radio"/> |

- A. Mastered
- B. Not Mastered

**Answer:** A

**Explanation:**

**Answer Area**

| Statements                                 | Yes                              | No                               |
|--------------------------------------------|----------------------------------|----------------------------------|
| You can assign Managed2 to V1.             | <input checked="" type="radio"/> | <input type="radio"/>            |
| You can assign Managed3 to V1.             | <input checked="" type="radio"/> | <input type="radio"/>            |
| You can assign VM1 the Owner role for RG1. | <input type="radio"/>            | <input checked="" type="radio"/> |

**NEW QUESTION 280**

- (Exam Topic 4)  
 You have a Microsoft 365 tenant.  
 You have an Active Directory domain that syncs to the Azure Active Directory (Azure AD) tenant. Users connect to the internet by using a hardware firewall at your company. The users authenticate to the firewall by using their Active Directory credentials.  
 You plan to manage access to external applications by using Azure AD.  
 You need to use the firewall logs to create a list of unmanaged external applications and the users who access them.  
 What should you use to gather the information?

- A. Cloud App Discovery in Microsoft Defender for Cloud Apps
- B. enterprise applications in Azure AD
- C. access reviews in Azure AD
- D. Application Insights in Azure Monitor

**Answer:** A

**NEW QUESTION 285**

- (Exam Topic 4)  
 You have an Azure AD tenant that contains the groups shown in the following table.

| Name   | Owner | Number of internal users | Number of guest users |
|--------|-------|--------------------------|-----------------------|
| Group1 | User1 | 500                      | 25                    |
| Group2 | User2 | 295                      | 100                   |

You create an access review for Group1 as shown in the following table.

| Setting      | Value                   |
|--------------|-------------------------|
| Review type  | Teams + Groups          |
| Review scope | All users               |
| Reviewers    | Users review own access |

You create an access review for Group2 as shown in the following table.

| Setting      | Value            |
|--------------|------------------|
| Review type  | Teams + Groups   |
| Review scope | Guest users only |
| Reviewers    | Group owner      |

What is the minimum number of Azure AD Premium P2 licenses required for each group? To answer, select the appropriate options in the answer area. NOTE: Each correct selection is worth one point.

Group1:

1

500

525

Group2:

1

100

295

395

- A. Mastered

B. Not Mastered

Answer: A

Explanation:

Group1:

1

500

525

Group2:

1

100

295

395

NEW QUESTION 289

.....

## Thank You for Trying Our Product

### We offer two products:

1st - We have Practice Tests Software with Actual Exam Questions

2nd - Questons and Answers in PDF Format

### SC-300 Practice Exam Features:

- \* SC-300 Questions and Answers Updated Frequently
- \* SC-300 Practice Questions Verified by Expert Senior Certified Staff
- \* SC-300 Most Realistic Questions that Guarantee you a Pass on Your FirstTry
- \* SC-300 Practice Test Questions in Multiple Choice Formats and Updatesfor 1 Year

**100% Actual & Verified — Instant Download, Please Click**  
**[Order The SC-300 Practice Test Here](#)**