

# Microsoft

## Exam Questions AZ-140

Configuring and Operating Windows Virtual Desktop on Microsoft Azure



NEW QUESTION 1

HOTSPOT - (Topic 3)

You have a Windows Virtual Desktop host pool that has a max session limit of 15. Disconnected sessions are signed out immediately. The session hosts for the host pool are shown in the following exhibit.

Home > Windows Virtual Desktop > WVD

### WVD - Session hosts

Host pool

+ Add Refresh Assign Export to CSV

Search by name Status: 12 selected Drain mode: 2 selected

Name ↑↓	Status ↑↓	Drain mode ↑↓	Assigned User ↑↓	Active sessions	Resource group ↑↓
WVD-0	Available	Off	-	11	rg-wvd
WVD-1	Available	Off	-	2	RG-WVD
WVD-2	Available	On	-	0	RG-WVD
WVD-3	Available	Off	-	15	RG-WVD
WVD-5	Available	On	-	0	RG-WVD
WVD-6	Available	Off	-	13	RG-WVD
WVD-4	Unavailable	Off	-	0	RG-WVD

Use the drop-down menus to select the answer choice that completes each statement based on the information presented in the graphic.  
NOTE: Each correct selection is worth one point.

The host pool type is [answer choice].

pooled  
personal with direct assignment  
personal with automatic assignment

New sessions can occur on [answer choice] only.

WVD-0, WVD-1, and WVD-6  
WVD-0, WVD-1, WVD-3, and WVD-6  
WVD-0, WVD-1, WVD-2, WVD-5, and WVD-6

- A. Mastered
- B. Not Mastered

Answer: A

Explanation:

The host pool type is [answer choice].

pooled  
personal with direct assignment  
personal with automatic assignment

New sessions can occur on [answer choice] only.

WVD-0, WVD-1, and WVD-6  
WVD-0, WVD-1, WVD-3, and WVD-6  
WVD-0, WVD-1, WVD-2, WVD-5, and WVD-6

NEW QUESTION 2

DRAG DROP - (Topic 3)

You have an Azure Virtual Desktop host pool named Pool1, an application named App1, and an Azure file share named Share1. You need to ensure that you can publish App1 to Pool1 by using MSIX app attach.

Which four actions should you perform in sequence before you publish App1? To answer, move the appropriate actions from the list of actions to the answer area and arrange them in the correct order.

Actions

Create an MSIX image.

Generate a signing certificate.

Upload the MSIX package to Share1.

Generate an encryption certificate.

Create an MSIX package.

Upload the MSIX image to Share1.

Answer Area

- A. Mastered
- B. Not Mastered

Answer: A

Explanation:

Actions

Create an MSIX image.

Generate a signing certificate.

Upload the MSIX package to Share1.

Generate an encryption certificate.

Create an MSIX package.

Upload the MSIX image to Share1.

Answer Area

Generate a signing certificate.

Create an MSIX package.

Create an MSIX image.

Upload the MSIX image to Share1.

NEW QUESTION 3

- (Topic 3)  
You have an Azure Virtual Desktop personal host pool named Pool1 that contains 20 Azure AD-joined session hosts. You need to ensure that only approved virtual machine extensions are installed on the Pool 1 session hosts. The solution must minimize administrative effort. What should you use?

- A. Azure Resource Manager (ARM) templates
- B. Azure Policy
- C. Windows Admin Center
- D. Group Policy

Answer: B

NEW QUESTION 4

DRAG DROP - (Topic 3)  
You have an Azure subscription that contains a virtual machine named VM1. VM1 runs a customized version of Windows 10 Enterprise. You generalize the operating system on VM1 and shut down the virtual machine. You need to deploy additional virtual machines based on an image of VM1 by using the Azure portal. Which three actions should you perform in sequence? To answer, move the appropriate actions from the list of actions to the answer area and arrange them in the correct order. Select and Place:

Actions

Create an image version.

Create an Azure compute gallery.

Generate a snapshot of VM1.

Create an image definition.

Back up VM1.

Answer Area



- A. Mastered
- B. Not Mastered

**Answer:** A

**Explanation:**

A picture containing graphical user interface Description automatically generated

**NEW QUESTION 5**

HOTSPOT - (Topic 3)

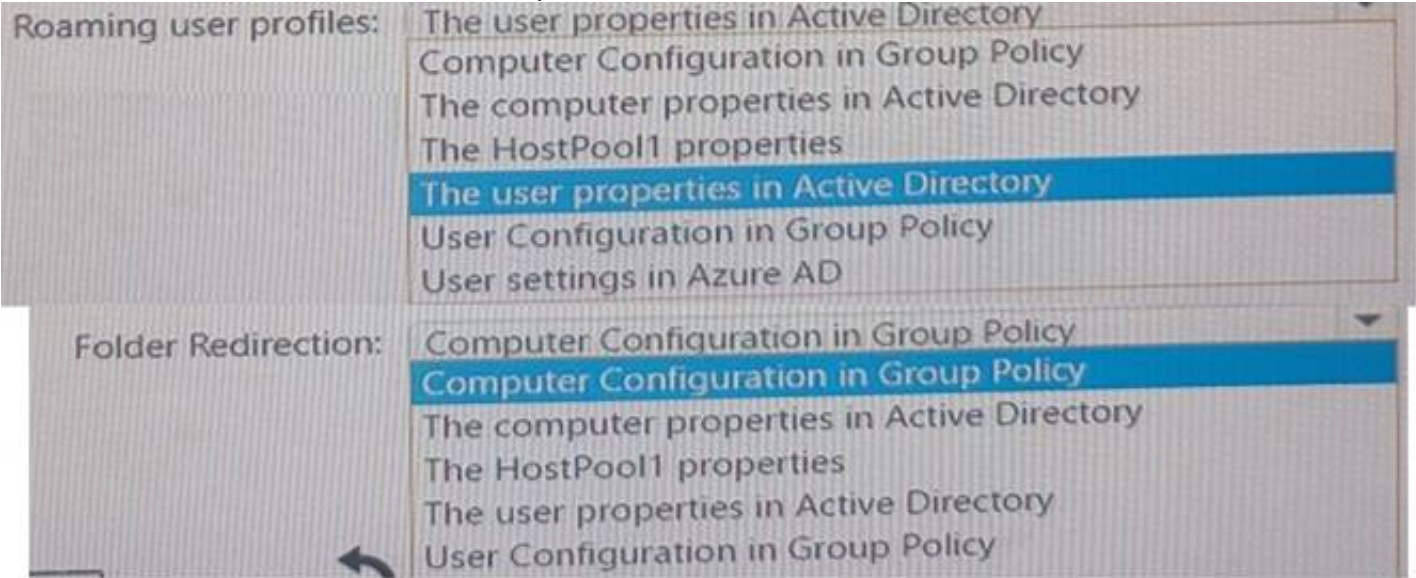
Your on-premises network contains an Active Directory domain named contoso.com that syncs with Azure AD. You deploy an Azure Virtual Desktop pooled host pool named HostPool1 that contains five hybrid-joined session hosts. You need to ensure that all the user sessions of HostPool1 meet the following requirements:

- Users must use roaming user profiles.
- Users must use Folder Redirection.

The solution must minimize administrative effort.

What should you use to meet each requirement? To answer, select the appropriate options in the answer area.

NOTE: Each correct selection is worth one point.



- A. Mastered
- B. Not Mastered

**Answer:** A

**NEW QUESTION 6**

HOTSPOT - (Topic 3)

You create an Azure Virtual Desktop host pool as shown in the following exhibit.

# Create a host pool ...

Validation passed.

Basics Virtual Machines Workspace Advanced Tags Review + create

## Basics

Subscription	Azure Pass - Sponsorship
Resource group	RG1
Host pool name	HostPool1
Location	West Europe
Host pool type	Pooled
Max session limit	10
Load balancing algorithm	Depth-first

## Virtual Machines

Resource group	RG1
Name prefix	vm
Virtual machine location	West Europe
Availability options	Availability zone
Availability zone	3
Image type	Gallery
Image	Windows 11 Enterprise multi-session
Virtual machine size	Standard D4s v3
Number of VMs	5
OS disk type	Standard SSD
Use managed disks	Yes
Virtual network	VNet1
Boot Diagnostics	Enable with managed storage account (recommended)
Subnet	default(10.0.0.0/24)
Network security group	Basic
Public inbound ports	None
Specify domain or unit	No
Domain Join Type	Active Directory

Use the drop-down menus to select the answer choice that answers each question based on the information presented in the graphic.  
NOTE: Each correct selection is worth one point. Hot Area:

What is the maximum number of concurrent user sessions for the host pool?

5

10

15

30

50

150

Where will the first five user sessions be created?

On five different session hosts

On the same session host

On three different session hosts

- A. Mastered
- B. Not Mastered

Answer: A

Explanation:

What is the maximum number of concurrent user sessions for the host pool?

5
10
15
30
50
150

Where will the first five user sessions be created?

On five different session hosts
On the same session host
On three different session hosts

NEW QUESTION 7

- (Topic 3)  
 You have a Azure Virtual Desktop deployment.  
 In Azure Advisor, you discover the following recommendation related to Azure Virtual Desktop:

- Impact Medium
- Description: No validation environment enabled
- Potential Benefit Ensure business continuity through AVD service deployments
- Impacted Resource:1 Host Pool

What can you validate by implementing the recommendations?

- A. Capacity requirements of the session hosts
- B. Security settings of Azure Virtual Desktop
- C. Preview features for Azure Virtual Desktop
- D. Azure Site Recovery failover of the session hosts

Answer: D

Explanation:  
 Validation environments are used to test and validate Azure Virtual Desktop deployments before they are made available to users. This can include testing the capacity of the session hosts, the performance of the deployment, and the configuration of security settings. By implementing a validation environment, you can ensure that the Azure Virtual Desktop deployment is working correctly and that there are no issues that could impact business continuity. This can help to ensure a smooth user experience and minimize downtime.

NEW QUESTION 8

HOTSPOT - (Topic 3)  
 You have a Windows Virtual Desktop deployment.  
 You plan to create the host pools shown in the following table.

Name	Requirement
Pool1	<ul style="list-style-type: none"> <li>• Will be directly assigned to users in the graphics department at your company</li> <li>• Will run heavy graphic rendering and compute-intensive applications</li> <li>• Must support premium storage</li> </ul>
Pool2	<ul style="list-style-type: none"> <li>• Pooled virtual machines for approximately 10 users</li> <li>• Will run Microsoft Office 365 apps</li> <li>• Will require calling and meeting features in Microsoft Teams</li> <li>• Must support premium storage</li> </ul>

You need to recommend the virtual machine size for each host pool. The solution must minimize costs.  
 Which size should you recommend for each pool? To answer, select the appropriate  
 NOTE: Each correct selection is worth one point.

Pool1:

Av2-series

Dsv4-series

NVv3-series

Pool2:

Av2-series

Dsv4-series

NVv3-series



- A. Mastered
- B. Not Mastered

Answer: A

Explanation:

Pool1: 

Av2-series

Dsv4-series

NVv3-series

Pool2: 

Av2-series

Dsv4-series

NVv3-series

NEW QUESTION 9

DRAG DROP - (Topic 3)

After you answer a question in this section, you will NOT be able to return to it. As a result, these questions will not appear in the review screen.

You have an Azure Virtual Desktop host pool that runs Windows 10 Enterprise multi- session.

User sessions are load-balanced between the session hosts. Idle session timeout is 30 minutes.

You plan to shut down a session host named Host1 to perform routine maintenance. You need to prevent new user sessions to Host1 without disconnecting active user sessions.

Solution: From the properties of the virtual machine of Host1, you configure the Auto- shutdown settings.

Does this meet the goal?

- A. Yes
- B. No

Answer: B

Explanation:

Reference:

<https://docs.microsoft.com/en-us/azure/virtual-desktop/drain-mode>

NEW QUESTION 10

DRAG DROP - (Topic 3)

You have a Windows Virtual Desktop host pool named Pool1. Pool1 contains session hosts that use FSLogix profile containers hosted in Azure NetApp Files volumes.

You need to back up profile files by using snapshots.

Which three actions should you perform in sequence? To answer, move the appropriate

Actions

Create an Azure NetApp account.

Register the NetApp Resource Provider.

Register the Azure NetApp snapshot policy feature.

Create a snapshot policy.

Apply a snapshot policy to a volume.

Answer Area

⏪

⏩

⏴

⏵

- A. Mastered
- B. Not Mastered

Answer: A

Explanation:

**Actions**

Create an Azure NetApp account.

Register the NetApp Resource Provider.

Register the Azure NetApp snapshot policy feature.

Create a snapshot policy.

Apply a snapshot policy to a volume.

**Answer Area**

Register the Azure NetApp snapshot policy feature.

◀

Create a snapshot policy.

▶

▶

Apply a snapshot policy to a volume.

✓

### NEW QUESTION 10

- (Topic 3)

You have an Azure Virtual Desktop deployment and the users shown in the following table.

Name	User device operating system	Preferred web browser
User1	MacOS	Mozilla Firefox
User2	Windows 10	Internet Explorer
User3	iOS	Apple Safari

All the users plan to use a web browser to access Azure Virtual Desktop resources. Which users can connect to Azure Virtual Desktop by using their preferred browser?

- A. User2 only
- B. User1 only
- C. User1, User2, and User3
- D. User2 and User3 only
- E. User1 and User2 only

**Answer:** C

**Explanation:**

<https://learn.microsoft.com/en-us/azure/virtual-desktop/users/connect-web>

### NEW QUESTION 12

HOTSPOT - (Topic 3)

You have an Azure Virtual Desktop deployment that contains the resources shown in the

Name	Description
Pool1	Personal host pool
Host1	Windows 11 session host in Pool1
Host2	Windows 11 session host in Pool1
AG1	RemoteApp app group that contains an app named App1
WS1	Workspace that publishes AG1

You need to perform the following configurations:

- Enable a managed identity for App1.
- Enable Clipboard redirection for App1.

On which resources should you perform the configurations? To answer, select the appropriate options in the answer area.

NOTE: Each correct selection is worth one point.



Answer Area

Managed identity:

AG1  
Host1 and Host2  
Pool1  
WS1

Clipboard redirection:

AG1  
Host1 and Host2  
Pool1  
WS1

- A. Mastered
- B. Not Mastered

Answer: A

Explanation:

Answer Area

Managed identity:

AG1  
Host1 and Host2  
Pool1  
WS1

Clipboard redirection:

AG1  
Host1 and Host2  
Pool1  
WS1

NEW QUESTION 13

HOTSPOT - (Topic 3)

You have an Azure subscription.

You plan to deploy an Azure Virtual Desktop solution that will contain Windows 10 multi- session hosts in a single host pool. The solution has the requirements shown in the following table.

Requirement	Value
Total users	1,200
Shifts per day	3
Users per shift	400
User workload type	Medium
Concurrent users per session host	16

You need to configure the session host for the host pool. The solution must minimize costs. How many session hosts should the host pool contain, and how many vCPUs should each session host have? To answer, select the appropriate options in the answer area. NOTE: Each correct selection is worth one point.

Session hosts:

25
75
400
1200

vCPUs per session host:

2
4
8
16

- A. Mastered
- B. Not Mastered

Answer: A

Explanation:

Session hosts:

25
75
400
1200

vCPUs per session host:

2
4
8
16

NEW QUESTION 16

- (Topic 3)

You have an Azure Virtual Desktop deployment that contains the host pools shown in the following table.

Name	Type	Location
Pool1	Windows 10 Enterprise, personal	East US
Pool2	Windows Server 2019, pooled	East US

You need to create a disaster recovery environment in the West US region. The solution must minimize costs and administrative effort. What should you do?

- A. Regenerate the token and reregister the virtual machines in the host pools.
- B. Create two new host pools in the West US region.
- C. Run the Invoke-RdsUserSessionLogoff cmdlet.
- D. Create an Azure Site Recovery plan.

Answer: B

NEW QUESTION 19

- (Topic 3)

You have an Azure Active Directory Domain Services (Azure AD D5) domain named contoso.com.

You have an Azure Storage account named storage1. Storage1 hosts a file share named share1 that has share and file system permissions configured. Share1 is configured to use contoso.com for authentication,

You create an Azure Virtual Desktop host pool named Pool1. Pool1 contains two session hosts that use the Windows 10 multi-session + Microsoft 365 Apps image.

You need to configure an FSLogix profile container for Pool1.

What should you do next?

- A. Generate a shared access signature (SAS) key for storage1.
- B. Install the FSLogix agent on the session hosts of Pool1.
- C. From storage1, set Allow shared key access to Disabled.
- D. Configure the Profiles setting for the session hosts of Pool1.

**Answer: B**

**Explanation:**

Reference:

<https://docs.microsoft.com/en-us/azure/virtual-desktop/create-host-pools-user-profile>

## NEW QUESTION 20

- (Topic 3)

Note: This question is part of a series of questions that present the same scenario. Each question in the series contains a unique solution that might meet the stated goals. Some question sets might have more than one correct solution, while others might not have a correct solution.

After you answer a question in this section, you will NOT be able to return to it. As a result, these questions will not appear in the review screen.

You have a Windows Virtual Desktop host pool named Pool1 that is integrated with an Azure Active Directory Domain Services (Azure AD DS) managed domain.

You need to configure idle session timeout settings for users that connect to the session hosts in Pool1.

Solution: From the Azure portal, you modify the Session behavior settings in the RDP Properties of Pool1.

Does that meet the goal?

- A. Yes
- B. No

**Answer: B**

## NEW QUESTION 22

HOTSPOT - (Topic 3)

You have an Azure subscription that contains an Azure Virtual Desktop deployment. The deployment contains 25 session hosts.

You create two storage accounts as shown in the following table.

The storage accounts store Azure Virtual Desktop user profile data.

You plan to deploy FSLogix user Profile Containers that will use Cloud Cache. You need to configure the FSLogix registry settings for each session host.

How should you complete the registry settings? To answer, select the appropriate options in the answer area.

NOTE: Each correct selection is worth one point.

**Answer Area**

Registry Path: HKLM\SOFTWARE\Policies\FSLogix\Profiles

Registry Value 1:

Type: DWORD

Value: 1

Registry Value 2:

Type: MULTI\_SZ

Value: type=smb,connectionString=<\\storage1.file.core.windows.net\share1>;  
type=smb,connectionString=<\\storage2.file.core.windows.net\share2>

- A. Mastered
- B. Not Mastered

**Answer: A**

**Explanation:**

**Answer Area**

Registry Path: HKLM\SOFTWARE\Policies\FSLogix\Profiles

Registry Value 1:

Type: DWORD

Value: 1

Registry Value 2:

Type: MULTI\_SZ

Value: type=smb,connectionString=<\\storage1.file.core.windows.net\share1>;  
type=smb,connectionString=<\\storage2.file.core.windows.net\share2>

## NEW QUESTION 24



- (Topic 3)

You have an Azure Active Directory Domain Services (Azure AD DS) managed domain named conioso.com.

You create a Azure Virtual Desktop host pool named Pool1. You assign the Virtual Machine Contributor role for the Azure subscription to a user named Admin1.

You need to ensure that Admin1 can add session hosts to Pool1. The solution must use the principle of least privilege.

Which two actions should you perform? Each correct answer presents part of the solution. NOTE: Each correct selection is worth one point.

- A. Add Admin1 to the AAD DC Administrators group.
- B. Assign a Microsoft 365 Enterprise E3 license to Admin1.
- C. Assign Admin1 the Desktop Virtualization Session Host Operator role for Pool1.
- D. Assign Admin1 the Desktop Virtualization Host Pool Contributor role for Pool1.
- E. Generate a registration token.

**Answer:** CE

**Explanation:**

Reference:

<https://docs.microsoft.com/en-us/azure/virtual-desktop/rbac>

#### NEW QUESTION 29

DRAG DROP - (Topic 3)

You plan to deploy Windows Virtual Desktop.

You need to create Azure NetApp Files storage to store FSLogix profile containers.

Which four actions should you perform in sequence after you register the NetApp Resource Provider? To answer, move the appropriate actions from the list of actions to the answer area and arrange them in the correct order.

NOTE: More than one order of answer choices is correct. You will receive credit for any of the correct orders you select.

##### Actions

Create a NetApp account.

Create and assign a managed identity.

Create a volume.

Create a capacity pool.

Create an Azure file share.

Configure an Active Directory connection.

##### Answer Area



- A. Mastered
- B. Not Mastered

**Answer:** A

**Explanation:**

- \* 1. Set up Azure NetApp Files account
- \* 2. Create capacity pool
- \* 3. Join Active Directory connection
- \* 4. Create new volume

<https://docs.microsoft.com/en-us/azure/virtual-desktop/create-fslogix-profile-container>

#### NEW QUESTION 32

- (Topic 3)

You deploy multiple Windows Virtual Desktop session hosts that have only private IP addresses.

You need to ensure that administrators can initiate an RDP session to the session hosts by using the Azure portal.

What should you implement?

- A. Remote Desktop Connection Broker (RD Connection Broker)
- B. Azure Application Gateway
- C. Azure Bastion
- D. Remote Desktop Session Host (RD Session Host)

**Answer:** D

#### NEW QUESTION 36

- (Topic 3)

You have a Azure Virtual Desktop deployment. You Implement FSLogix profile container.

You need to ensure that the FSLogix profile containers are not used for specific users. What should you do?

- A. Modify the RDP Properties of the host pool.
- B. Apply an Application Masking rule to each session host.
- C. Apply an AppLocker policy to each session host.
- D. Modify the local groups on each session host.

**Answer:** D

**Explanation:**

Reference:

<https://docs.microsoft.com/en-us/fslogix/configure-profile-container-tutorial>

**NEW QUESTION 40**

- (Topic 3)

You have a Windows Virtual Desktop host pool named Pool1.

You are troubleshooting an issue for a Remote Desktop client that stopped responding. You need to restore the default Remote Desktop client settings and unsubscribe from all workspaces.

Which command should you run?

- A. msrdcw
- B. resetengine
- C. mstsc
- D. resetpluginhost

**Answer:** A

**Explanation:**

Reference:

<https://docs.microsoft.com/en-us/azure/virtual-desktop/troubleshoot-client>

**NEW QUESTION 41**

- (Topic 3)

You have a Azure Virtual Desktop host pool that contains live session hosts. The session hosts run Windows 10 Enterprise multi-session.

You need to prevent users from accessing the internet from Azure Virtual Desktop sessions. The session hosts must be allowed to access all the required Microsoft services.

Solution: You configure the RDP Properties of the host pool. Does This meet the goal?

- A. Yes
- B. No

**Answer:** B

**NEW QUESTION 43**

- (Topic 3)

Note: This question is part of a series of questions that present the same scenario. Each question in the series contains a unique solution that might meet the stated goals. Some question sets might have more than one correct solution, while others might not have a correct solution.

After you answer a question in this section, you will NOT be able to return to it. As a result, these questions will not appear in the review screen.

You have an Azure Virtual Desktop host pool that runs Windows 10 Enterprise multi-session.

User sessions are load-balanced between the session hosts. Idle session timeout is 30 minutes.

You plan to shut down a session host named Host1 to perform routine maintenance.

You need to prevent new user sessions to Host1 without disconnecting active user

Solution: From the host pool, you remove Host1 from the session host list. Does this meet the goal?

- A. Yes
- B. No

**Answer:** B

**Explanation:**

Reference:

<https://docs.microsoft.com/en-us/azure/virtual-desktop/drain-mode>

**NEW QUESTION 46**

- (Topic 3)

You have an Azure Virtual Desktop host pool.

You add a French language pack to each session host in the host pool.

Several days later, users report that English displays when they connect to Azure Virtual Desktop.

After an investigation, you discover that the French language pack was removed, and the session hosts reverted to English.

You need to ensure that the French language pack is always available on the session hosts.

What should you do?

- A. Apply a Group Policy setting that blocks the cleanup of unused language packs.
- B. Apply a Group Policy setting to disable the Time & language settings.
- C. Configure the international settings on each host.
- D. Assign a default time zone on each host.

**Answer:** B

**Explanation:**

<https://docs.microsoft.com/en-us/windows-hardware/manufacture/desktop/languages-overview?view=windows-11#block-cleanup-of-unused-language-packs>

**NEW QUESTION 48**

HOTSPOT - (Topic 3)

You have an Azure Virtual Desktop Deployment that contains a workspace named Workspace1 and a user named User1. Workspace1 contains a Desktop application group named Pool1Desktop.

At 09:00, you create a conditional access policy that has the following settings:

? Assignments:

- Users and groups: User1
- Cloud apps or actions: Azure Virtual Desktop
- Conditions: 0 conditions selected

? Access controls

- Grant: Grant access, Require multi-factor authentication
- Sessions: Sign-in frequency 1 hour

User1 performs the actions shown in the following table.

For each of the following statements, select Yes if the statement is true. Otherwise, select No.

NOTE: Each correct selection is worth one point.

Statements	Yes	No
User1 is prompted for multi-factor authentication (MFA) at 09:10.	<input type="radio"/>	<input type="radio"/>
User1 is prompted for multi-factor authentication (MFA) at 10:20.	<input type="radio"/>	<input type="radio"/>
User1 is prompted for multi-factor authentication (MFA) at 13:50.	<input type="radio"/>	<input type="radio"/>

- A. Mastered
- B. Not Mastered

Answer: A

Explanation:

Statements	Yes	No
User1 is prompted for multi-factor authentication (MFA) at 09:10.	<input checked="" type="radio"/>	<input type="radio"/>
User1 is prompted for multi-factor authentication (MFA) at 10:20.	<input type="radio"/>	<input checked="" type="radio"/>
User1 is prompted for multi-factor authentication (MFA) at 13:50.	<input checked="" type="radio"/>	<input type="radio"/>

NEW QUESTION 52

- (Topic 3)

You have an Azure Virtual Desktop host pool named HostPool1 that contains 20 session hosts.

You create a new scaling plan that has the Ramp-up settings shown in the following exhibit.

Add a schedule

✓ General

2 Ramp-up

3 Peak hours

4 Ramp-down

5 Off-peak hours

Repeats on

Mon, Tue, Wed, Thu, Fri

Time zone

(UTC-06:00) Central Time (US & Canada)

Start time (24 hour system) \* ⓘ

08:00

Load balancing algorithm ⓘ

Breadth-first

Minimum percentage of hosts (%) \* ⓘ

20

Capacity threshold (%) \* ⓘ

60

Use the drop-down menus to select the answer choice that completes each statement based on the information presented in the graphic.

NOTE: Each correct selection is worth one point.

Starting at 08:00, [answer choice] session hosts will start for ramp-up.

2

4

16

20

New user sessions will be distributed [answer choice].

evenly across all available session hosts

to the session host that has the lowest CPU usage

to the session host with the most connections that has not reached the limit

- A. Mastered
- B. Not Mastered



**Answer:** A

**Explanation:**

Starting at 08:00, [answer choice] session hosts will start for ramp-up.

2
4
16
20

New user sessions will be distributed [answer choice].

evenly across all available session hosts
to the session host that has the lowest CPU usage
to the session host with the most connections that has not reached the limit

**NEW QUESTION 54**

HOTSPOT - (Topic 3)

You have an Azure virtual machine named VM1 that runs Windows 10 Enterprise multi-session.

You plan to add language packs to VM1 and create a custom image of VM1 for a Windows Virtual Desktop host pool.

You need to ensure that modern apps can use the additional language packs when you deploy session hosts by using the custom image.

Which command should you run first? To answer, select the appropriate options in the answer area.

NOTE: Each correct selection is worth one point.

▼
Disable-ScheduledTask
Enable-ScheduledTask
New-ScheduledTask
Start-AppBackgroundTask

-TaskPath "\\Microsoft\\Windows\\AppxDeploymentClient\\" -TaskName

▼
"License Validation"
"Pre-staged app cleanup"
"RemoteFXvGPUDisableTask"

- A. Mastered
- B. Not Mastered

**Answer:** A

**Explanation:**

▼
Disable-ScheduledTask
Enable-ScheduledTask
New-ScheduledTask
Start-AppBackgroundTask

-TaskPath "\\Microsoft\\Windows\\AppxDeploymentClient\\" -TaskName

▼
"License Validation"
"Pre-staged app cleanup"
"RemoteFXvGPUDisableTask"

**NEW QUESTION 58**

- (Topic 3)

You have an Azure Virtual Desktop deployment that contains a host pool. The host pool contains 15 session hosts. All the sessions hosts have FSLogix installed.

You need to configure the path to where the user profiles are stored. The solution must minimize administrative effort.

Which registry setting should you use?

- A. VHDLocations
- B. CCDLocations
- C. ProfileDirSDDL
- D. FlipFlopProfileDirectoryName

**Answer:** A

**NEW QUESTION 62**

- (Topic 3)

You have an Azure subscription named Subscription that contains an Azure Virtual

HostPool1 is managed by using Microsoft Intune. Subscription1 contains 50 users that connect to HostPool1 by using computers that run Windows 10.

You need to prevent the users from copying files between an Azure Virtual Desktop session and the computers. The solution must minimize administrative effort. What should you do?

- A. Modify the RDP properties of HostPool1.
- B. Create a Conditional Access policy in Azure Active Directory (Azure AD).
- C. Create a compliance policy in Intune.
- D. Create a configuration profile in Intune.

**Answer:** A

**NEW QUESTION 63**

- (Topic 3)

Your network contains an on-premises Active Directory domain named contoso.com that syncs to an Azure Active Directory (Azure AD) tenant You have an Azure Virtual Desktop host pool named Pool1 that has the following settings:

- Host pool name- Pool 1
- Host pool type: Personal
- Number of VMs: 3

The session hosts have the following configurations:

- Image used to create the virtual machines: Windows 10 Enterprise
- Virtual machines domain-Joined to: On-premises conroso.com domain

You need to ensure that you can use Microsoft EndPoint Manager to manage security updates on the session hosts. What should you do?

- A. Create Windows 10 Enterprise multi-session images.
- B. Configure the session hosts as hybrid Azure AD-joined.
- C. Change Host pool type to Pooled and specify Load balancing algorithm as Depth-first
- D. Change Host pool type to Pooled and specify Load balancing algorithm as Breadth-first

**Answer: B**

#### NEW QUESTION 64

- (Topic 3)

You have a Windows Virtual Desktop host pool.

You need to install Microsoft Antimalware for Azure on the session hosts. What should you do?

- A. Add an extension to each session host.
- B. From a Group Policy Object (GPO), enable Windows 10 security features.
- C. Configure the RDP Properties of the host pool.
- D. Sign in to each session host and install a Windows feature.

**Answer: A**

#### Explanation:

Reference:

<https://docs.microsoft.com/en-us/azure/security/fundamentals/antimalware>

#### NEW QUESTION 67

- (Topic 3)

You have an Azure subscription that contains the resources shown in the following table.

Name	Description
AVDVM-0	A virtual machine used in a pooled virtual machine set
share1	An Azure file share that stores FSLogix profile containers
Image1	A custom Windows 10 image in a shared image gallery
Image2	A custom Windows Server 2019 image stored in Azure Blob storage

You create a recovery services vault named Vault1.

Which resources can you back up using Azure Backup to Vault1?

- A. AVDVM-0 only
- B. AVDVM-0 and share1 only
- C. AVDVM-0, Image1 and Image2 only
- D. AVDVM-0. share1 and Image1 only
- E. AVDVM-0. share1. Image1 and Image2

**Answer: B**

#### Explanation:

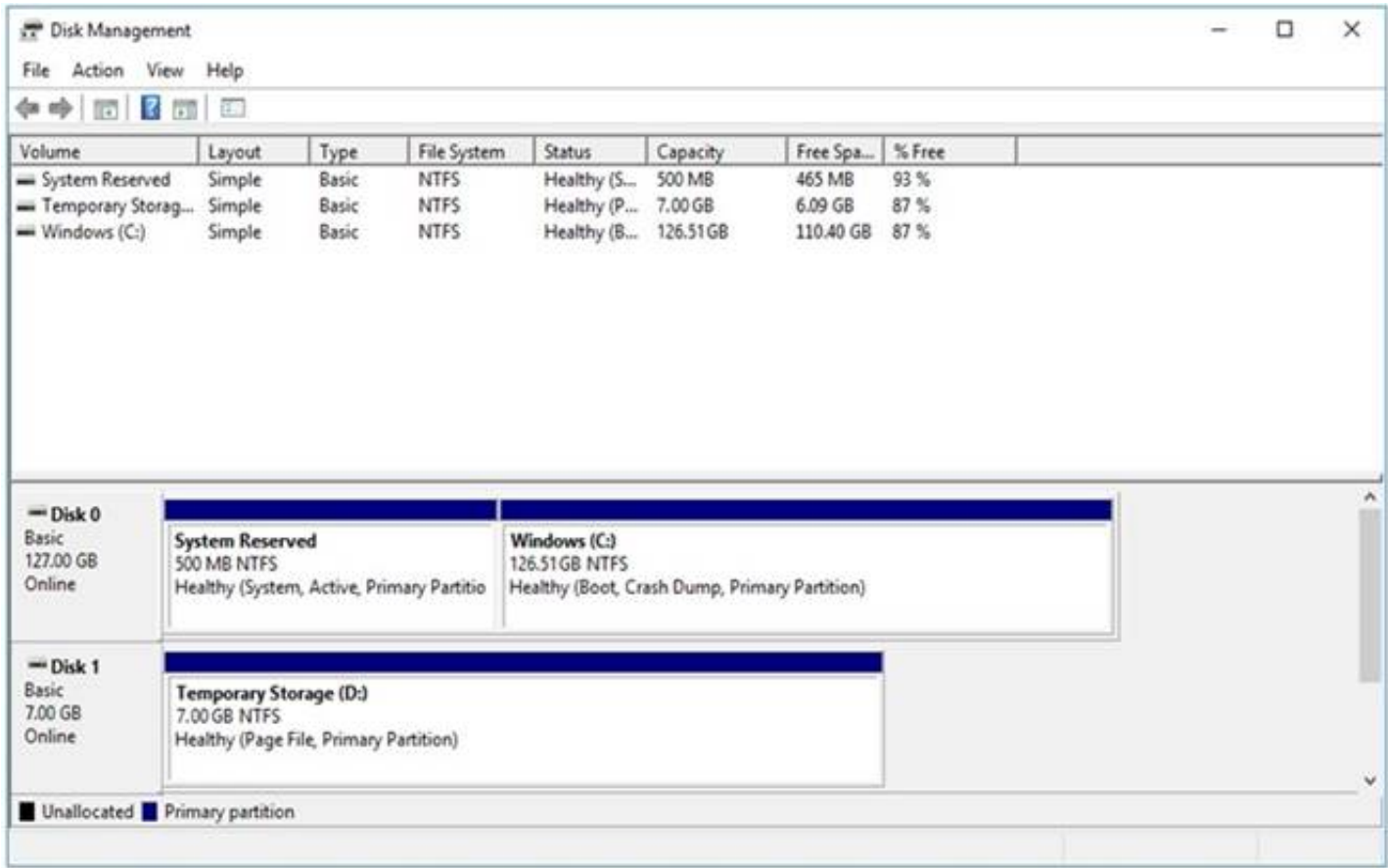
<https://docs.microsoft.com/en-us/azure/backup/backup-overview#what-can-i-back-up> Operational backup of blobs is a local backup solution. So the backup data isn't transferred to the Backup vault

#### NEW QUESTION 71

DRAG DROP - (Topic 3)

You have a Windows Virtual Desktop deployment.

You have a session host named Host1 that has the disk layout shown in the exhibit. (Click the Exhibit tab.)



You plan to deploy an app that must be installed on D. The app requires 500 GB of disk space. You need to add a new data disk that will be assigned the drive letter D. The solution must maintain the current performance of Host1. Which four actions should you perform in sequence? To answer, move the appropriate actions from the list of actions to the answer area and arrange them in the correct order.

**Actions**

Move the page file to drive C.

Move the page file to Temporary Storage.

Change the drive letter of Temporary Storage (D:).

Mark Temporary Storage (D:) as **Active**.

Add the new disk and assign drive D.

Move the page file to System Reserved.

**Answer Area**

⬅️⬆️

➡️⬆️

- A. Mastered
- B. Not Mastered

Answer: A

Explanation:

**Actions**

Move the page file to drive C.

Move the page file to Temporary Storage.

Change the drive letter of Temporary Storage (D:).

Mark Temporary Storage (D:) as **Active**.

Add the new disk and assign drive D.

Move the page file to System Reserved.

**Answer Area**

Move the page file to drive C.

Change the drive letter of Temporary Storage (D:).

⬅️⬆️

➡️⬆️

Add the new disk and assign drive D.

Move the page file to Temporary Storage.

NEW QUESTION 76

HOTSPOT - (Topic 3)

You have an Azure Virtual Desktop deployment that contains the session hosts shown in the following table.

Name	Configuration
Host1	RDP Shortpath for managed networks is enabled.
Host2	RDP Shortpath for managed networks is not configured.

You have the users shows in the following table.



Name	Remote Desktop client type
User1	Windows desktop
User2	Web

Users connect to Azure from the locations shown in the following table.

Name	Connection type
Location1	Site-to-Site VPN
Location2	Internet

For each of the following statements, select Yes if the statement is true. Otherwise, select No.  
 NOTE: Each correct selection is worth one point.

Answer Area

Statements	Yes	No
RDP Shortpath is used when User2 is in Location1 and connects to Host1.	<input type="radio"/>	<input type="radio"/>
RDP Shortpath is used when User1 is in Location1 and connects to Host2.	<input type="radio"/>	<input type="radio"/>
RDP Shortpath is used when User1 is in Location2 and connects to Host1.	<input type="radio"/>	<input type="radio"/>

- A. Mastered
- B. Not Mastered

Answer: A

Explanation:

Answer Area

Statements	Yes	No
RDP Shortpath is used when User2 is in Location1 and connects to Host1.	<input checked="" type="radio"/>	<input type="radio"/>
RDP Shortpath is used when User1 is in Location1 and connects to Host2.	<input type="radio"/>	<input checked="" type="radio"/>
RDP Shortpath is used when User1 is in Location2 and connects to Host1.	<input checked="" type="radio"/>	<input type="radio"/>

NEW QUESTION 80

HOTSPOT - (Topic 3)

You have an Azure subscription that contains a hybrid Azure Active Directory (Azure AD) Server 2019 and contain managed disks.

You plan to deploy an Azure Virtual Desktop host pool that will use a Storage Spaces

Direct Scale-Out File Server to host user profiles.

You need to ensure that the virtual machines can host the Storage Spaces Direct deployment. The solution must meet the following requirements:

- Ensure that the user profiles are available if a single server falls.
- Minimize administrative effort.

What should you do? To answer, select the appropriate options In the answer area. NOTE: Each correct selection is worth one point.

Answer Area

On each virtual machine, install:

The Failover Clustering feature

The File Server Resource Manager role service

The Remote Desktop Services role

Create:

An additional Azure virtual machine that runs Windows Server 2019

An Azure NetApp Files share

An Azure storage account

Two shared disks

- A. Mastered
- B. Not Mastered

**Answer:** A

**Explanation:**

Graphical user interface, text, application Description automatically generated

References:

<https://docs.microsoft.com/en-us/windows-server/storage/storage-spaces/deploy-storage-spaces-direct>

**NEW QUESTION 84**

- (Topic 3)

Note: This question is part of a series of questions that present the same scenario. Each question in the series contains a unique solution that might meet the stated goals. Some question sets might have more than one correct solution, while others might not have a correct solution.

After you answer a question in this section, you will NOT be able to return to it. As a result, these questions will not appear in the review screen.

You have the following:

? A Microsoft 365 E5 tenant

? An on-premises Active Directory domain

? A hybrid Azure Active Directory (Azure AD) tenant

? An Azure Active Directory Domain Services (Azure AD DS) managed domain

? An Azure Virtual Desktop deployment

The Azure Virtual Desktop deployment contains personal desktops that are hybrid joined to the on-premises domain and enrolled in Microsoft Intune.

You need to configure the security settings for the Microsoft Edge browsers on the personal desktops.

Solution: You configure a configuration profile in Intune. Does this meet the goal?

A. Yes

B. No

**Answer:** A

**Explanation:**

Reference:

<https://docs.microsoft.com/en-us/mem/intune/fundamentals/azure-virtual-desktop>

**NEW QUESTION 87**

- (Topic 3)

You have an Azure Virtual Desktop deployment.

The session hosts are joined to an on-premises Active Directory domain named contoso.com.

You need to limit user sessions to three hours. What should you configure?

A. a Group Policy Object (GPO) in contoso.com.

B. the properties of the workspace

C. the RDP Properties of a host pool

D. just-in-time (JIT) VM access

**Answer:** A

**NEW QUESTION 89**

- (Topic 3)

You plan to deploy Windows Virtual Desktop session host virtual machines based on a preconfigured master image. The master image will be stored in a shared image.

You create a virtual machine named Image1 to use as the master image. You install applications and apply configuration changes to Image1.

You need to ensure that the new session host virtual machines created based on Image1 have unique names and security identifiers.

What should you do on Image1 before you add the image to the shared image gallery?

A. At a command prompt, run the set computername command.

B. At a command prompt, run the sysprep command.

C. From PowerShell, run the rename-computer cmdlet.

D. From the lock screen of the Windows device, perform a Windows Autopilot Reset.

**Answer:** B

**Explanation:**

Reference:

<https://docs.microsoft.com/en-us/azure/virtual-machines/windows/prepare-for-upload-vhd-image#determinewhen-to-use-sysprep>

**NEW QUESTION 92**

- (Topic 3)

You have a shared image gallery that contains the Windows 10 images shown in the following table.

Name	Location	Operating system state
Image1	West US	Generalized
Image2	West US	Specialized
Image3	West Europe	Generalized
Image4	West Europe	Specialized

You create a Windows Virtual Desktop deployment that has the following settings:

? Host pool name: Pool1  
? Location: West US  
? Host pool type: Personal  
Which images can you use for the session hosts?

- A. Image1 only
- B. Image1, Image2, Image3, and Image4
- C. Image2 only
- D. Image1 and Image2 only
- E. Image1 and Image3 only

**Answer:** E

**Explanation:**

Reference:  
<https://azure.microsoft.com/en-in/blog/vm-image-blog-post/>

**NEW QUESTION 95**

- (Topic 3)  
You have an Azure Virtual Desktop host pool named Pool1 that contains the following:  
? A linked workspace named Workspace1  
? An application group named Default Desktop  
? A session host named Host1  
You need to add a new data disk. What should you modify?

- A. Host1
- B. Workspace 1
- C. Pool1
- D. Default Desktop

**Answer:** A

**NEW QUESTION 97**

DRAG DROP - (Topic 3)  
You have an Azure Virtual Desktop deployment and the Azure Storage accounts shown in the following table.  
You plan to create FSLogix profile containers and store the containers in the storage accounts.  
You need to identify which storage accounts support the FSlogix profile containers, and then order the accounts from highest to lowest redundancy.  
Which three storage accounts should you identify in sequence? To answer, move the appropriate accounts from the list of accounts to the answer area and arrange them in the correct order.

Storage accounts

storage3

storage5

storage1

storage4

storage2

>

<

Answer Area

↑

↓

- A. Mastered
- B. Not Mastered

**Answer:** A

**Explanation:**

Storage accounts

storage3

storage5

storage1

storage4

storage2

>

<

Answer Area

storage1

storage4

storage2

↑

↓

**NEW QUESTION 99**

HOTSPOT - (Topic 3)  
You have an Azure Virtual Desktop deployment and two Azure Active Directory groups named Group1 and Group2.  
You create two Conditional Access policies named Policy1 and Policy2. Policy1 is assigned to Group1. Policy2 is assigned to Group2. Both policies include Azure Virtual Desktop as a cloud app.  
You need to meet the following requirements:  
• The users in Group1 must be prompted for multi-factor authentication (MFA) when they connect to Azure Virtual Desktop.  
• The users in Group2 must reauthenticate every eight hours while they are connected to Azure Virtual Desktop.  
Which settings should you configure in Policy1 and Policy2? To answer, select the appropriate options in the answer area.



NOTE: Each correct selection is worth one point.

Answer Area

Policy1: 

Access controls: Grant  
Access controls: Session  
Assignments: Conditions: Sign-in risk  
Assignments: Conditions: User risk

Policy2: 

Access controls: Grant  
Access controls: Session  
Assignments: Conditions: Sign-in risk  
Assignments: Conditions: User risk

- A. Mastered
- B. Not Mastered

Answer: A

Explanation:  
Graphical user interface, text, application, chat or text message Description automatically generated

NEW QUESTION 102

HOTSPOT - (Topic 3)  
Your network contains an on-premises Active Directory domain named contoso.com that syncs to an Azure Active Directory (Azure AD) tenant. You have an Azure subscription that contains an Azure Virtual Desktop host pool. You create an Azure Storage account named storage1. You need to use FSLogix profile containers in storage1 to store user profiles for a group named Group1. The solution must use the principle of least privilege. What should you include in the solution? To answer, select the appropriate options in the answer area.

For storage1: 

Join to the contoso.com domain.  
Configure a shared access signature (SAS).  
Enable encryption by using customer-managed keys.  
Configure Azure Active Directory Domain Services (AD DS) integration.

To Group1, assign the role of: 

Storage Blob Data Contributor  
Storage Blob Data Reader  
Storage File Data SMB Share Contributor  
Storage File Data SMB Share Reader

- A. Mastered
- B. Not Mastered

Answer: A

Explanation:

For storage1: 

Join to the contoso.com domain.  
Configure a shared access signature (SAS).  
Enable encryption by using customer-managed keys.  
Configure Azure Active Directory Domain Services (AD DS) integration.

To Group1, assign the role of: 

Storage Blob Data Contributor  
Storage Blob Data Reader  
Storage File Data SMB Share Contributor  
Storage File Data SMB Share Reader

NEW QUESTION 105

- (Topic 3)  
Note: This question is part of a series of questions that present the same scenario. Each question in the series contains a unique solution that might meet the stated goals. Some question sets might have more than one correct solution, while others might not have a correct solution.

After you answer a question in this section, you will NOT be able to return to it. As a result, these questions will not appear in the review screen.

You have the following:

- ? A Microsoft 365 E5 tenant
- ? An on-premises Active Directory domain
- ? A hybrid Azure Active Directory (Azure AD) tenant
- ? An Azure Active Directory Domain Services (Azure AD DS) managed domain
- ? An Azure Virtual Desktop deployment

The Azure Virtual Desktop deployment contains personal desktops that are hybrid joined to the on-premises domain and enrolled in Microsoft Intune.

You need to configure the security settings for the Microsoft Edge browsers on the personal desktops.

Solution: You create and configure a Group Policy Object (GPO) in the on-premises

Does this meet the goal?

- A. Yes
- B. No

**Answer: A**

**Explanation:**

Reference:

<https://www.compete366.com/blog-posts/eight-tips-on-how-to-manage-azure-virtual-desktop-avd/>

#### NEW QUESTION 108

- (Topic 3)

You have an Azure Virtual Desktop host pool. The pool contains session hosts that run Windows 10 Enterprise multi-session.

You connect to a Remote Desktop session on Pool1 and discover an issue with the frequency of screen updates.

You need to identify whether the issue relates to insufficient server, network, or client resources. The solution must minimize how long it takes to identify the resource type.

What should you do?

- A. From within the current session, use the Azure Virtual Desktop Experience Estimator.
- B. From Azure Cloud Shell, run the `Get-AzOperationalInsightsWorkspaceUsage` cmdlet and specify the `DefaultProfile` parameter.
- C. From Azure Cloud Shell, run the `Get-AzWvdUserSession` cmdlet and specify the `UserSessionId` parameter.
- D. From within the current session, use Performance Monitor to display the values of all the RemoteFX Graphics(\*)\Frames Skipped/Second counters.

**Answer: D**

**Explanation:**

Reference:

<https://docs.microsoft.com/en-us/azure/virtual-desktop/remotefx-graphics-performance-counters>

#### NEW QUESTION 113

- (Topic 3)

You deploy an Azure Virtual Desktop session host pool.

You need to provide a group of pilot users access to the virtual machines in the pool. What should you do?

- A. Create a role definition.
- B. Add the users to the local Administrators group on the virtual machines.
- C. Create a role assignment.

**Answer: D**

**Explanation:**

Reference:

<https://docs.microsoft.com/en-us/azure/virtual-desktop/delegated-access-virtual-desktop>

#### NEW QUESTION 114

HOTSPOT - (Topic 3)

You have a hybrid Azure Active Directory (Azure AD) tenant named contoso.com that contains the users shown in the following table.

Name	Member of
User1	Group1
User2	Group2
User3	Group1, Group3

You have an Azure Virtual Desktop host pool. All the session hosts have a folder named C:\Folder1.

You create an FSLogix Application Masking rule as shown in the following exhibit.

Edit Rule

Hiding Rule

Object Name:  
%SystemDriverFoler%\Folder1

Browse...

Object Type

☐ File / Registry Value

☒ Directory / Registry Key

☐ Printer

☐ Font

Comment:

Comment

OK

Cancel

You create assignments for the Application Masking rule as shown in the following exhibit.

Assignments

Rule Set:

Assignment	Applies
Everyone	Yes
CONTOSO\Group1	No
CONTOSO\Group3	Yes
User2@contoso.com	No

Set As Template

Move Up

Move Down

Add

Remove

☐ Rule Set does apply to user/group

☒ Rule Set does not apply to user/group

AD Reporting

OK

Cancel

Apply

For each of the following statements, select Yes if the statement is true. Otherwise, select No.  
NOTE: Each correct selection is worth one point.

Answer Area		
Statements	Yes	No
User1 can see folder C:\Folder1 on a session host.	<input type="radio"/>	<input type="radio"/>
User2 can see folder C:\Folder1 on a session host.	<input type="radio"/>	<input type="radio"/>
User3 can see folder C:\Folder1 on a session host.	<input type="radio"/>	<input type="radio"/>

- A. Mastered
- B. Not Mastered

Answer: A

Explanation:  
Graphical user interface, text Description automatically generated  
References:  
<https://docs.microsoft.com/en-us/fslogix/application-masking-rules-ht> <https://docs.microsoft.com/en-us/fslogix/application-masking-users-groups-ht>



#### NEW QUESTION 117

- (Topic 3)

You have a Windows Virtual Desktop host pool that contains two session hosts. The Microsoft Teams client is installed on each session host.

You discover that only the Microsoft Teams chat and collaboration features work. The calling and meeting features are disabled.

You need to ensure that users can set the calling and meeting features from within Microsoft Teams.

What should you do?

- A. Install the Remote Desktop WebRTC Redirector Service.
- B. Configure Remote audio mode in the RDP Properties.
- C. Install the Teams Meeting add-in for Outlook.
- D. Configure audio input redirection.

**Answer:** A

#### Explanation:

Reference:

<https://docs.microsoft.com/en-us/azure/virtual-desktop/teams-on-wvd>

#### NEW QUESTION 119

- (Topic 3)

You have a Azure Virtual Desktop host pool named Pool1 that is integrated with an Azure Active Directory Domain Services (Azure AD DS) managed domain.

You need to configure idle session timeout settings for users that connect to the session hosts in Pool 1.

Solution: From the Azure portal you modify the Advanced settings in the RDP Properties of Pool1.

Does This meet the goal?

- A. Yes
- B. No

**Answer:** B

#### NEW QUESTION 120

- (Topic 3)

You have an Azure Active Directory (Azure AD) tenant named contoso.com and an Azure virtual network named VNET1.

To VNET1, you deploy an Azure Active Directory Domain Services (Azure AD DS) managed domain named litwareinc.com.

To VNET1, you plan to deploy a Windows Virtual Desktop host pool named Pool1. You need to ensure that you can deploy Windows 10 Enterprise host pools to Pool1. What should you do first?

- A. Modify the settings of the litwareinc.com DNS zone.
- B. Modify the DNS settings of VNET1.
- C. Add a custom domain name to contoso.com.
- D. Implement Azure AD Connect cloud sync.

**Answer:** A

#### Explanation:

Reference:

<https://docs.microsoft.com/en-us/azure/active-directory-domain-services/tutorial-create-instance>

"Update DNS settings for the Azure virtual network With Azure AD DS successfully deployed, now configure the virtual network to allow other connected VMs and applications to use the managed domain. To provide this connectivity, update the DNS server settings for your virtual network to point to the two IP addresses where the managed domain is deployed."

#### NEW QUESTION 122

- (Topic 3)

You have an Azure Active Directory (Azure AD) tenant named contoso.com.

You use a user account named Admin1 to deploy an Azure Active Directory Domain Services (Azure AD DS) managed domain named aaddscontoso.com to a virtual network named VNET1.

You plan to deploy an Azure Virtual Desktop host pool named Pool1 to VNET1.

You need to ensure that you can use the Admin1 user account to deploy Windows 10 Enterprise session hosts to Pool1.

What should you do first?

- A. Add Admin1 to the AA Change Host pool type to Pooled and specify Load D DC
- B. Assign the Cloud device administrator role to Admin1.
- C. Assign a Microsoft 365 Enterprise E3 license to Admin1.
- D. Change the password of Admin1.

**Answer:** A

#### Explanation:

Reference:

<https://docs.microsoft.com/en-us/azure/virtual-desktop/create-host-pools-azure-marketplace?tabs=azure-portal>

#### NEW QUESTION 124

- (Topic 3)

Note: This question is part of a series of questions that present the same scenario. Each question in the series contains a unique solution that might meet the stated goals. Some question sets might have more than one correct solution, while others might not have a correct solution.

After you answer a question in this section, you will NOT be able to return to it. As a result, these questions will not appear in the review screen.

You have the following:

? A Microsoft 365 E5 tenant  
 ? An on-premises Active Directory domain  
 ? A hybrid Azure Active Directory (Azure AD) tenant  
 ? An Azure Active Directory Domain Services (Azure AD DS) managed domain  
 ? An Azure Virtual Desktop deployment  
 The Azure Virtual Desktop deployment contains personal desktops that are hybrid joined to the on-premises domain and enrolled in Microsoft Intune.  
 You need to configure the security settings for the Microsoft Edge browsers on the personal desktops.  
 Solution: You configure a Group Policy Object (GPO) in the Azure AD DS managed domain.  
 Does this meet the goal?

- A. Yes
- B. No

**Answer:** B

**Explanation:**  
 Reference:  
<https://www.compete366.com/blog-posts/eight-tips-on-how-to-manage-azure-virtual-desktop-avd/>

**NEW QUESTION 128**  
 - (Topic 3)

You have an Azure storage account that contains the generalized Windows 10 disk images shown in the following table.

Name	Format	Disk type
Disk1	VHD	Fixed size
Disk2	VHD	Dynamically expanding
Disk3	VHDX	Fixed size
Disk4	VHDX	Dynamically expanding

You need to create an image that will be used to deploy an Azure Virtual Desktop session  
 Which disk should you use?

- A. Disk1
- B. Disk2
- C. Disk3
- D. Disk4

**Answer:** A

**Explanation:**  
 Reference:  
<https://docs.microsoft.com/en-us/azure/virtual-desktop/set-up-customize-master-image>

**NEW QUESTION 130**  
 HOTSPOT - (Topic 3)

Your company has the offices shown in the following table.

Location	Internal network IP address space	Public IP address space
Boston	10.10.0.0/16	13.83.131.0/24
Seattle	172.16.0.0/16	92.15.10.0/24

The company has an Azure Active Directory (Azure AD) tenant named contoso.com that contains a user named User1.  
 Users connect to a Windows Virtual Desktop deployment named WVD1. WVD1 contains session hosts that have public IP addresses from the 52.166.253.0/24 subnet.  
 Contoso.com has a conditional access policy that has the following settings:  
 ? Name: Policy1  
 ? Assignments:  
 Access controls:  
 ? Grant: Grant access, Require multi-factor authentication Enable policy: On  
 For each of the following statements, select Yes if the statement is true. Otherwise, select  
 NOTE: Each correct selection is worth one point.

Statements	Yes	No
If User1 connects to Windows Virtual Desktop from the office in Boston, User1 is prompted for multi-factor authentication (MFA).	<input type="radio"/>	<input type="radio"/>
If User1 connects to Windows Virtual Desktop from home, User1 is prompted for multi-factor authentication (MFA).	<input type="radio"/>	<input type="radio"/>
If User1 connects to Microsoft Exchange Online from a Windows Virtual Desktop session, User1 is prompted for multi-factor authentication (MFA).	<input type="radio"/>	<input type="radio"/>

- A. Mastered
- B. Not Mastered

Answer: A

Explanation:

Statements	Yes	No
If User1 connects to Windows Virtual Desktop from the office in Boston, User1 is prompted for multi-factor authentication (MFA).	<input checked="" type="radio"/>	<input type="radio"/>
If User1 connects to Windows Virtual Desktop from home, User1 is prompted for multi-factor authentication (MFA).	<input checked="" type="radio"/>	<input type="radio"/>
If User1 connects to Microsoft Exchange Online from a Windows Virtual Desktop session, User1 is prompted for multi-factor authentication (MFA).	<input checked="" type="radio"/>	<input type="radio"/>

NEW QUESTION 131

DRAG DROP - (Topic 3)

You have an Azure subscription that contains the storage accounts shown in the following table.

Name	Performance	Type
storage1	Standard	General purpose v2
storage2	Premium	BlockBlobStorage
storage3	Premium	Page blobs
storage4	Premium	FileStorage

You have a custom generalized Windows 10 image.  
You plan to deploy an Azure Virtual Desktop host pool that will use the custom image and FSLogix profile containers.  
You need to recommend which storage accounts to use for the custom image and the profile containers. The solution must meet the following requirements:  
? Minimize costs to store the image.  
? Maximize performance of the profile containers.  
Which account should you recommend for each type of content? To answer, drag the appropriate accounts to the correct content type. Each account may be used once, more than once, or not at all. You may need to drag the split bar between panes or scroll to view content.  
NOTE: Each correct selection is worth one point.

Accounts

storage1

storage2

storage3

storage4

Answer Area

Custom image:

Profile containers:

- A. Mastered
- B. Not Mastered

Answer: A

Explanation:



Accounts

Answer Area

storage1

storage2

storage3

storage4

Custom image: 

storage2

Profile containers: 

storage4

NEW QUESTION 136

- (Topic 3)  
You have an Azure Virtual Desktop deployment.  
You need to monitor the deployment by using the Azure Virtual Desktop Insights solution in Azure Monitor.  
What should you use as the Diagnostic settings destination for the host pool?

A. Event hub  
B. Log Analytics workspace  
C. Storage account

Answer: B

NEW QUESTION 140

- (Topic 3)  
You plan to deploy Windows Virtual Desktop. The deployment will use existing virtual machines.  
You create a Windows Virtual Desktop host pool.  
You need to ensure that you can add the virtual machines to the host pool. What should you do first?

A. Register the Microsoft.DesktopVirtualization provider.  
B. Generate a registration key.  
C. Run the Invoke-AzVMRunCommand cmdlet.  
D. Create a role assignment.

Answer: B

Explanation:  
Reference:  
<https://docs.microsoft.com/en-us/azure/virtual-desktop/create-host-pools-azure-marketplace>

NEW QUESTION 144

HOTSPOT - (Topic 3)  
You plan to deploy Windows Virtual Desktop.  
Users have the devices shown in the following table.

Type	Platform
Tablet	Windows 10 Pro
Phone	Android
Laptop	macOS

From which device types can the users connect to Windows Virtual Desktop resources by select the appropriate options in the answer area.  
NOTE: Each correct selection is worth one point.

Remote Desktop client app:

▼

Tablet only
Tablet and phone only
Tablet and laptop only
Tablet, phone, and laptop

Remote Desktop web client:

▼

Tablet only
Tablet and phone only
Tablet and laptop only
Tablet, phone, and laptop

- A. Mastered
- B. Not Mastered

Answer: A

Explanation:

Remote Desktop client app:

▼

Tablet only
Tablet and phone only
Tablet and laptop only
Tablet, phone, and laptop

Remote Desktop web client:

▼

Tablet only
Tablet and phone only
Tablet and laptop only
Tablet, phone, and laptop

#### NEW QUESTION 146

- (Topic 3)

You have an Azure subscription that contains the resources shown in the following table.

Name	Description
WVDVM-0	A virtual machine used in a pooled virtual machine set
share1	An Azure file share that stores FSLogix profile containers
Image1	A custom Windows 10 image in a shared image gallery
Image2	A custom Windows Server 2019 image stored in Azure Blob storage

Which resources can you back up by using Azure Backup?

- A. WVDVM-0 and share1 only
- B. WVDVM-0 only
- C. WVDVM-0, Image1, and Image2 only
- D. WVDVM-0, share1, and Image1 only

E. WVDVM-0, share1, Image1, and Image2

**Answer:** A

**Explanation:**

Reference:

<https://docs.microsoft.com/en-us/azure/backup/backup-afs> <https://docs.microsoft.com/en-us/azure/backup/backup-azure-vms-introduction>

**NEW QUESTION 149**

HOTSPOT - (Topic 3)

You have an Azure Virtual Desktop deployment that contains a host pool named Pool1. Pool1 contains two session hosts. Pool1 is configured as shown in the following exhibit.

Name

Pool1

**Configuration**

Personal desktop

Yes

No

Start VM on connect ⓘ

☒

No

☐

Yes

Validation environment ⓘ

☒

No

☐

Yes

Friendly name



Description

Created through the Azure Virtual Desktop extension



Load balancing algorithm ⓘ

Depth-first



Max session limit ⓘ

5



Use the drop-down menus to select the answer choice that completes each statement

NOTE: Each correct selection is worth one point.

**Answer Area**

Service updates will be applied to Pool1 [answer choice].

as soon as the updates are released

once every 30 days

once the updates are generally available

New user connections will be [answer choice].

connected to the session host that has the highest number of existing connections and has not reached the maximum session limit

evenly distributed across all available hosts

rejected once five sessions are established

- A. Mastered
- B. Not Mastered

**Answer:** A



**Explanation:**

Graphical user interface, text, application Description automatically generated

**NEW QUESTION 150**

- (Topic 2)

Which two roles should you assign to Admin2 to meet the security requirements? Each correct answer presents part of the solution.

NOTE: Each correct selection is worth one point.

- A. Desktop Virtualization Host Pool Contributor
- B. Desktop Virtualization Application Group Contributor
- C. Desktop Virtualization Workspace Contributor
- D. Desktop Virtualization Application Group Reader
- E. User Access Administrator

**Answer:** CD

**Explanation:**

Reference:

<https://docs.microsoft.com/en-us/azure/virtual-desktop/rbac>

**NEW QUESTION 152**

- (Topic 2)

You need to implement network security to meet the security requirements and the performance requirements.

Which two actions should you perform? Each correct answer presents a complete solution.

NOTE: Each correct selection is worth one point.

- A. Deploy two Azure Firewall instances and Azure Firewall Manager.
- B. Filter traffic by using outbound rules.
- C. Filter traffic by using infrastructure rules.
- D. Filter traffic by using inbound rules.
- E. Deploy a network security group (NSG) and two application security groups.
- F. Deploy an Azure Firewall instance and Azure Firewall Manager.

**Answer:** AB

**Explanation:**

Reference:

<https://docs.microsoft.com/en-us/azure/firewall/protect-windows-virtual-desktop>

**NEW QUESTION 154**

- (Topic 2)

You need to configure the user settings of Admin1 to meet the user profile requirements. What should you do?

- A. Modify the membership of the FSLogix ODFC Exclude List group.
- B. Modify the membership of the FSLogix Profile Exclude List group.
- C. Modify the HKLM\SOFTWARE\FSLogix\Profiles registry settings.
- D. Modify the HKLM\SOFTWARE\FSLogix\ODFC registry settings.

**Answer:** B

**Explanation:**

Reference:

<https://docs.microsoft.com/en-us/fslogix/overview>

<https://docs.microsoft.com/en-us/fslogix/configure-profile-container-tutorial#set-up-include-and-exclude-usergroups>

**NEW QUESTION 159**

- (Topic 2)

You need to recommend an authentication solution that meets the performance requirements.

Which two actions should you include in the recommendation? Each correct answer presents part of the solution.

NOTE: Each correct selection is worth one point.

- A. Join all the session hosts to Azure AD.
- B. In each Azure region that will contain the Windows Virtual Desktop session hosts, create an Azure Active Directory Domain Service (Azure AD DS) managed domain.
- C. Deploy domain controllers for the on-premises Active Directory domain on Azure virtual machines.
- D. Deploy read-only domain controllers (RODCs) on Azure virtual machines.
- E. In each Azure region that will contain the Windows Virtual Desktop session hosts, create an Active Directory site.

**Answer:** AC

**Explanation:**

<https://www.compete366.com/blog-posts/how-to-implement-azure-windows-virtual-desktop- wvd/>

<https://docs.microsoft.com/en-us/azure/virtual-desktop/create-host-pools-azure-marketplace>

**NEW QUESTION 163**

- (Topic 2)

You need to modify the custom virtual machine images to meet the deployment requirements.

What should you install?

- A. the RSAT: Remote Desktop Services Tools optional feature
- B. the Azure Virtual Desktop Agent
- C. the Microsoft Monitoring Agent
- D. the FSLogix agent

**Answer:** D

**Explanation:**

Reference:

<https://docs.microsoft.com/en-us/azure/virtual-desktop/set-up-customize-master-image>

#### NEW QUESTION 165

- (Topic 1)

You need to configure the virtual machines that have the Pool1 prefix. The solution must meet the technical requirements. What should you use?

- A. a Windows Virtual Desktop automation task
- B. Virtual machine auto-shutdown
- C. Service Health in Azure Monitor
- D. Azure Automation

**Answer:** A

**Explanation:**

Reference:

<https://docs.microsoft.com/en-us/azure/logic-apps/create-automation-tasks-azure-resources>

#### NEW QUESTION 167

- (Topic 1)

You need to configure the device redirection settings. The solution must meet the technical requirements. Where should you configure the settings?

- A. Workspace1
- B. MontrealUsers
- C. Group1
- D. Pool1

**Answer:** D

#### NEW QUESTION 170

- (Topic 1)

You plan to implement the FSLogix profile containers for the Seattle office. Which storage account should you use?

- A. storage2
- B. storage4
- C. storage3
- D. storage1

**Answer:** A

**Explanation:**

Reference:

<https://docs.microsoft.com/en-us/azure/virtual-desktop/store-fslogix-profile>

#### NEW QUESTION 172

- (Topic 1)

Which role should you assign to Operator2 to meet the technical requirements?

- A. Desktop Virtualization Session Host Operator
- B. Desktop Virtualization Host Pool Contributor
- C. Desktop Virtualization User Session Operator
- D. Desktop Virtualization Contributor

**Answer:** D

**Explanation:**

Reference:

<https://docs.microsoft.com/en-us/azure/virtual-desktop/rbac>

#### NEW QUESTION 177

HOTSPOT - (Topic 1)

Which users can create Pool4, and which users can join session hosts to the domain? To answer, select the appropriate options in the answer area. NOTE: Each correct selection is worth one point.

Can create Pool4:

Admin2 only
Admin2 and Admin4 only
Admin1, Admin2, and Admin4 only
Admin2, Admin3, and Admin4 only
Admin1, Admin2, Admin3, and Admin4

Can join session hosts to the domain:

Operator1 only
Admin1 and Admin3 only
Operator1 and Admin1 only
Operator1 and Operator3 only
Operator1, Operator2, and Operator3

- A. Mastered
- B. Not Mastered

**Answer:** A

**Explanation:**

Can create Pool4:

Admin2 only
Admin2 and Admin4 only
Admin1, Admin2, and Admin4 only
Admin2, Admin3, and Admin4 only
Admin1, Admin2, Admin3, and Admin4

Can join session hosts to the domain:

Operator1 only
Admin1 and Admin3 only
Operator1 and Admin1 only
Operator1 and Operator3 only
Operator1, Operator2, and Operator3

#### NEW QUESTION 178

HOTSPOT - (Topic 3)

You have an Azure Virtual Desktop deployment.

You are configuring the outbound firewall settings for the host pool.

Which outbound URL and outbound port should you configure to ensure that the host machines maintain Windows activation? To answer, select the appropriate options in the answer area.

NOTE: Each correct selection is worth one point.

Answer Area

Outbound URL:

*.wvd.microsoft.us
*eh.servicebus.windows.net
gcs.prod.monitoring.core.windows.net
kms.core.windows.net

Outbound port:

80
389
443
1688

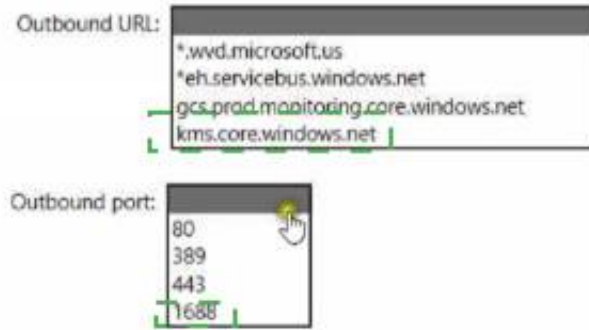
- A. Mastered
- B. Not Mastered

**Answer:** A

**Explanation:**



Answer Area



**NEW QUESTION 181**

- (Topic 3)

You have an Azure Virtual Desktop deployment that contains a host pool. The host pool ephemeral disks.

You need to deploy Microsoft OneDrive for Business.

Which two actions should you perform for each session host? Each correct answer presents part of the solution.

NOTE: Each correct selection is worth one point.

- A. Install FSLogix.
- B. Install the OneDrive sync app by using the per-machine installation option.
- C. Implement Application Masking.
- D. Install the OneDrive sync app by using the per-user installation option.
- E. Deploy an MSIX app attach package.

**Answer: AB**

**Explanation:**

The two actions you should perform for each session host in order to deploy Microsoft OneDrive for Business are:

- \* A. Install FSLogix - FSLogix provides a single-user solution for running multiple OneDrive for Business clients simultaneously on the same session host.
- \* B. Install the OneDrive sync app by using the per-machine installation option - according to the Microsoft AZ-140 Official Guide, "OneDrive for Business supports per-machine installation, which is required for a multi-user VDI environment." This means that the OneDrive sync app must be installed on each session host using the per-machine installation option.

**NEW QUESTION 183**

- (Topic 3)

You have a Windows Virtual Desktop host pool named Pool1 that runs Windows 10 Enterprise multi-session hosts.

You need to use Performance Monitor to troubleshoot a low frame quality issue that is affecting a current use session to Pool1.

What should you run to retrieve the user session ID?

- A. Get-ComputerInfo
- B. qwinsta
- C. whoami
- D. Get-LocalUser

**Answer: B**

**Explanation:**

Reference:

<https://docs.microsoft.com/en-us/azure/virtual-desktop/troubleshoot-vm-configuration>

**NEW QUESTION 184**

- (Topic 3)

You have a Azure Virtual Desktop deployment that uses Microsoft 355 cloud services including Microsoft Teams.

Users use the Remote Desktop client to connect to the deployment from computers that run Windows 10

You need to support audio and video in Azure Virtual Desktop and provide the users with access to Microsoft Teams calling and meeting features.

Which three actions should you perform? Each correct answer presents part of the solution.

NOTE: Each correct selection is worth one point.

- A. Install the Microsoft Teams WebSocket Service on the Windows 10 computers
- B. Configure the IsVWDEnvironment registry key on the Windows 10 computers
- C. Configure the isVWDEnvironment registry key on the virtual machines
- D. Install the Microsoft Teams desktop app on the Windows 10 computers
- E. Install the Microsoft Teams WebSocket Service on the virtual machines
- F. Install the Microsoft Teams desktop app on the virtual machines

**Answer: BDE**

**Explanation:**

Reference:

<https://docs.microsoft.com/en-us/azure/virtual-desktop/teams-on-avd>

**NEW QUESTION 187**

- (Topic 3)

You have an Azure Virtual Desktop deployment.

You plan to create a new host pool named Pool1 that will contain five Windows 11 session hosts.

You need to enable secure boot and vTPM on the session hosts. How should you configure the Virtual Machines settings?

- A. Enable encryption at rest and a platform-managed key.
- B. Enable a system-assigned managed identity.
- C. Set Network security group to Advanced.

**Answer:** B

#### NEW QUESTION 190

- (Topic 3)

Note: This question is part of a series of questions that present the same scenario. Each question in the series contains a unique solution that might meet the stated goals. Some question sets might have more than one correct solution, while others might not have a correct solution.

After you answer a question in this section, you will NOT be able to return to it. As a result, these questions will not appear in the review screen.

You have the following:

- ? A Microsoft 365 E5 tenant
- ? An on-premises Active Directory domain
- ? A hybrid Azure Active Directory (Azure AD) tenant
- ? An Azure Active Directory Domain Services (Azure AD DS) managed domain
- ? An Azure Virtual Desktop deployment

The Azure Virtual Desktop deployment contains personal desktops that are hybrid joined to the on-premises domain and enrolled in Microsoft Intune.

You need to configure the security settings for the Microsoft Edge browsers on the personal desktops.

Solution: You configure a compliance policy in Intune. Does this meet the goal?

- A. Yes
- B. No

**Answer:** B

#### Explanation:

You need to configure a Configuration Profile in Intune or use Group Policy.

#### NEW QUESTION 191

HOTSPOT - (Topic 3)

You have an Azure Virtual Desktop host pool named Pool1 and an Azure Storage account named storage1. Pool1 and storage1 are in the same Azure region.

The current network utilization of the session hosts during peak hours is 95%.

You plan to use FSLogix profile containers stored in storage1 for users that connect to Pool1.

You need to configure the session hosts and storage1 to minimize network latency when loading and updating profiles.

What should you do? To answer, select the appropriate options in the answer area.

NOTE: Each correct selection is worth one point.

For storage1:

	▼
Configure network routing.	
Configure a private endpoint.	
Configure the storage account type.	

For the session hosts:

	▼
Enable Write Accelerator.	
Increase the Virtual machine size.	
Add additional network adapters.	

- A. Mastered
- B. Not Mastered

**Answer:** A

#### Explanation:

For storage1:

▼

Configure network routing.

Configure a private endpoint.

Configure the storage account type.

For the session hosts:

▼

Enable Write Accelerator.

Increase the Virtual machine size.

Add additional network adapters.

#### NEW QUESTION 194

- (Topic 3)

You plan to deploy Windows Virtual Desktop to meet the department requirements shown in the following table.

Department	Required Windows Virtual Desktop resource	Number of users	GPU required
Research	Single-session desktop	10	No
Engineering	Multi-session desktop	50	Yes
IT	Multi-session desktop	50	No
Finance	RemoteApp	10	No

You plan to use Windows Virtual Desktop host pools with load balancing and autoscaling. You need to recommend a host pool design that meets the requirements. The solution must minimize costs.

What is the minimum number of host pools you should recommend?

- A. 1
- B. 2
- C. 3
- D. 4

**Answer: C**

#### Explanation:

Reference:

<https://docs.microsoft.com/en-us/azure/virtual-desktop/create-host-pools-azure-marketplace>

3 Host Pools - The RemoteApp can be joined inside the IT Multi-Session desktop or the Engineering. <https://docs.microsoft.com/en-us/azure/virtual-desktop/manage-app-groups> The default app group created for a new Azure Virtual Desktop host pool also publishes the full desktop. In addition, you can create one or more RemoteApp application groups for the host pool.

#### NEW QUESTION 198

- (Topic 3)

Note: This question is part of a series of questions that present the same scenario. Each question in the series contains a unique solution that might meet the stated goals. Some question sets might have more than one correct solution, while others might not have a correct solution.

After you answer a question in this section, you will NOT be able to return to it. As a result, these questions will not appear in the review screen.

You have an Azure Virtual Desktop host pool that runs Windows 10 Enterprise multi-session.

User sessions are load-balanced between the session hosts. Idle session timeout is 30 minutes.

You plan to shut down a session host named Host1 to perform routine maintenance. You need to prevent new user sessions to Host1 without disconnecting active user sessions.

Solution: you change the Drain mode of Host1. Does this meet the goal?

- A. Yes
- B. No

**Answer: A**

#### Explanation:

Reference:

<https://docs.microsoft.com/en-us/azure/virtual-desktop/drain-mode>

#### NEW QUESTION 201

- (Topic 3)

You have a Azure Virtual Desktop deployment.

You plan to implement the Start/Stop VMs during off-hours feature.

You need to ensure that you can stop the session hosts automatically based on the CPU utilization.

What should you do on the session hosts?

- A. Enable change tracking.
- B. Configure the Power Management settings.
- C. Configure the Diagnostic settings.



D. Install the Azure Virtual Desktop Agent

**Answer:** C

**Explanation:**

Reference:

<https://docs.microsoft.com/en-us/azure/virtual-desktop/azure-monitor>

**NEW QUESTION 203**

- (Topic 3)

You have an Azure Virtual Desktop host pool named HostPool1. HostPool1 contains Windows 10 session hosts and the application groups shown in the following table.

Name	Type
Appgroup1	Desktop
Appgroup2	RemoteApp
Appgroup3	RemoteApp

You need to assign an instance of a Windows 11 Desktop application group to users. What should you do first?

- A. Create a scaling plan.
- B. Create a new workspace.
- C. Add a session host to HostPool1.
- D. Create a new host pool

**Answer:** D

**Explanation:**

The current hostpool has Windows 10 hosts, If you add an Windows 11 host in the current hostpool you cant force a desktop to use Windows 11. If you want to use Windows 11, ether delete the current session hosts and add Windows 11 Hosts. or create a new Hostpool.

**NEW QUESTION 207**

.....

## Thank You for Trying Our Product

### We offer two products:

1st - We have Practice Tests Software with Actual Exam Questions

2nd - Questions and Answers in PDF Format

### AZ-140 Practice Exam Features:

- \* AZ-140 Questions and Answers Updated Frequently
- \* AZ-140 Practice Questions Verified by Expert Senior Certified Staff
- \* AZ-140 Most Realistic Questions that Guarantee you a Pass on Your FirstTry
- \* AZ-140 Practice Test Questions in Multiple Choice Formats and Updatesfor 1 Year

**100% Actual & Verified — Instant Download, Please Click**  
**[Order The AZ-140 Practice Test Here](#)**