

## HPE6-A72 Dumps

### Aruba Certified Switching Associate Exam

<https://www.certleader.com/HPE6-A72-dumps.html>



### NEW QUESTION 1

Refer to the exhibit.

Internet Protocol Version 4 (TCP/IPv4) Properties

**General**

You can get IP settings assigned automatically if your network supports this capability. Otherwise, you need to ask your network administrator for the appropriate IP settings.

☐ Obtain an IP address automatically

☒ Use the following IP address:

IP address: 10 . 177 . 213 . 75

Subnet mask: 255 . 255 . 248 . 0

Default gateway: 10 . 177 . 208 . 1

☐ Obtain DNS server address automatically

☒ Use the following DNS server addresses:

Preferred DNS server: . . .

Alternate DNS server: . . .

☐ Validate settings upon exit

Advanced...

OK Cancel

Using the static IP address configured above, what is the converted binary value of the third octet assigned to the local interface?

- A. 11010101
- B. 10110001
- C. 01001011
- D. 11111000

**Answer:** A

### NEW QUESTION 2

What is the binary conversion of the hexadecimal value 0x2001?

- A. 0010 0001
- B. 0002 0000 0000 0001
- C. 0011 0000 0000 0001
- D. 0010 0000 0000 0001

**Answer:** D

### NEW QUESTION 3

Place the OSI Layers in the correct order. Arrange them from least to greatest, starting with Layer 1 on the top, and progressing to Layer 7 on the bottom.

| OSI Layer          | Order |
|--------------------|-------|
| Application Layer  |       |
| Data Link Layer    |       |
| Network Layer      |       |
| Physical Layer     |       |
| Presentation Layer |       |
| Session Layer      |       |
| Transport Layer    |       |

Navigation buttons: > < ↑ ↓

- A. Mastered
- B. Not Mastered

**Answer:** A

**Explanation:**

Graphical user interface, application Description automatically generated

**NEW QUESTION 4**

Which two types of routes can be found in the IP routing table of an Aruba AOS-CX switch? (Choose two.)

- A. Local
- B. EIGRP
- C. BGP
- D. ISIS
- E. RIPng

**Answer:** AC

**NEW QUESTION 5**

Match the terms to the correct layer of the OSI model.

| Layer           |  | Term       |
|-----------------|--|------------|
| Transport Layer |  | Frames     |
| Network Layer   |  | Packets    |
| Physical Layer  |  | RF Signals |
| Data Link Layer |  | Segments   |

- A. Mastered
- B. Not Mastered

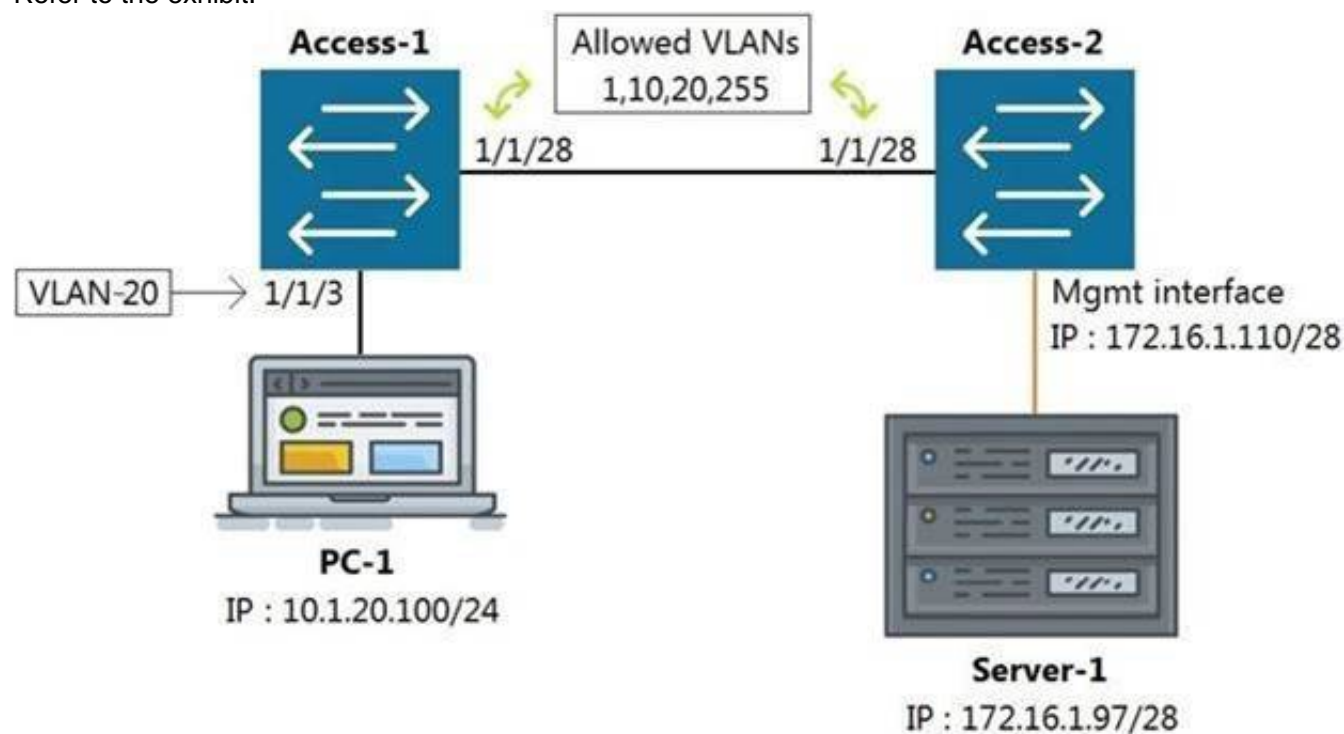
**Answer:** A

**Explanation:**

| Layer           |                 | Term       |
|-----------------|-----------------|------------|
| Transport Layer | Data Link Layer | Frames     |
| Network Layer   | Network Layer   | Packets    |
| Physical Layer  | Physical Layer  | RF Signals |
| Data Link Layer | Transport Layer | Segments   |

**NEW QUESTION 6**

Refer to the exhibit.



All switches are running Aruba OS-CX. While working in the terminal of Access-2, you are unable to reach Server-1 using SSH. What is the correct command to ping Server-1 from Access-2 to test reachability?

- A. Access-2# ping6 172.16.1.97 vrf mgm
- B. Access-2# ping 172.16.1.97
- C. Access-2# ping 172.16.1.97 vrf default
- D. Access-2# ping 172.16.1.97 vrf mgmt

**Answer: D**

#### NEW QUESTION 7

Refer to the exhibit.

|                 |   |   |    |
|-----------------|---|---|----|
| watchlog/3      | 0 | 0 | 0  |
| dbus-daemon     | 0 | 0 | 15 |
| intfd           | 0 | 0 | 11 |
| ext4-rsv-conver | 0 | 0 | 0  |
| scsi_eh_6       | 0 | 0 | 0  |
| cpuhp/3         | 0 | 0 | 0  |
| kworker/4:0     | 0 | 0 | 0  |
| scsi_tmf_4      | 0 | 0 | 0  |
| kworker/5:1H    | 0 | 0 | 0  |
| smartd          | 0 | 0 | 3  |
| fault-handler   | 0 | 0 | 10 |
| btd             | 0 | 0 | 12 |
| portd           | 0 | 0 | 12 |
| migration/4     | 0 | 0 | 0  |
| scsi_tmf_1      | 0 | 0 | 0  |
| kworker/2:0H    | 0 | 0 | 0  |
| kauditd         | 0 | 0 | 0  |
| rmond           | 0 | 0 | 9  |
| certmgr         | 0 | 0 | 13 |
| icmp6_unreachab | 0 | 0 | 0  |
| Core-1#         |   |   |    |

The above output is the result of issuing the command show system resource-utilization. What command should be used to enable terminal output line by line or page by page?

- A. The command page
- B. The command terminal length 30
- C. The command more
- D. The command less

**Answer: A**

#### NEW QUESTION 8

Match each description to the correct management tool for Aruba AOS-CX.

| Management Tools    | Answer Area          | Description   |
|---------------------|----------------------|---|
| NetEdit             | <input type="text"/> | can run as an OVA   |
| Aruba CX Mobile App | <input type="text"/> | requires AOS-CX switches to support HTTPS, SSH, and REST access |
|                     | <input type="text"/> | connects to switches via Bluetooth or Wi-Fi                     |
|                     | <input type="text"/> | includes a feature for stacking automation                      |
|                     | <input type="text"/> | supports SNMPv2c to discover third-party devices                |

- A. Mastered
- B. Not Mastered

**Answer: A**

**Explanation:**



#### Management Tools

|                     |
|---------------------|
| NetEdit             |
| Aruba CX Mobile App |

#### Answer Area

##### Management Tool

##### Description

|                     |   |
|---------------------|---|
| NetEdit             | can run as an OVA   |
| NetEdit             | requires AOS-CX switches to support HTTPS, SSH, and REST access |
| Aruba CX Mobile App | connects to switches via Bluetooth or Wi-Fi                     |
| Aruba CX Mobile App | includes a feature for stacking automation                      |
| NetEdit             | supports SNMPv2c to discover third-party devices                |

#### NEW QUESTION 9

Refer to the exhibit.



You are in the process of configuring VSF between Access-1 and Access-2. Access-1 has been configured as the VSF Master. What is a valid configuration for Access-2 to join the VSF stack?

- A. Access-2# configureAccess-2(config)# vsf member 1 Access-2(config)# vsf renumber-to 2 Access-2(vsf-member-1)# link 2 2/1/28 Access-2(vsf-member-1)# exitThis will save the VSF configuration and reboot the switc
- B. Do you want to continue (y/n)? y
- C. Access-2# configureAccess-2(config)# vsf member 2 Access-2(vsf-member-1)# link 2 1/1/28 Access-2(vsf-member-1)# exit This will save the VSF configuration and reboot the switc
- D. Do you want to continue (y/n)? y
- E. Access-2# configureAccess-2(config)# vsf member 2 Access-2(vsf-member-1)# link 1 1/1/28 Access-2(vsf-member-1)# exit This will save the VSF configuration and reboot the switc
- F. Do you want to continue (y/n)? y
- G. Access-2# configureAccess-2(config)# vsf member 1 Access-2(vsf-member-1)# link 1 1/1/28 Access-2(vsf-member-1)# exit Access-2(config)# vsf renumber-to 2This will save the VSF configuration and reboot the switc
- H. Do you want to continue (y/n)? y

**Answer: C**

#### NEW QUESTION 10

What command displays information regarding the secondary image installed on an AOS-CX switch?

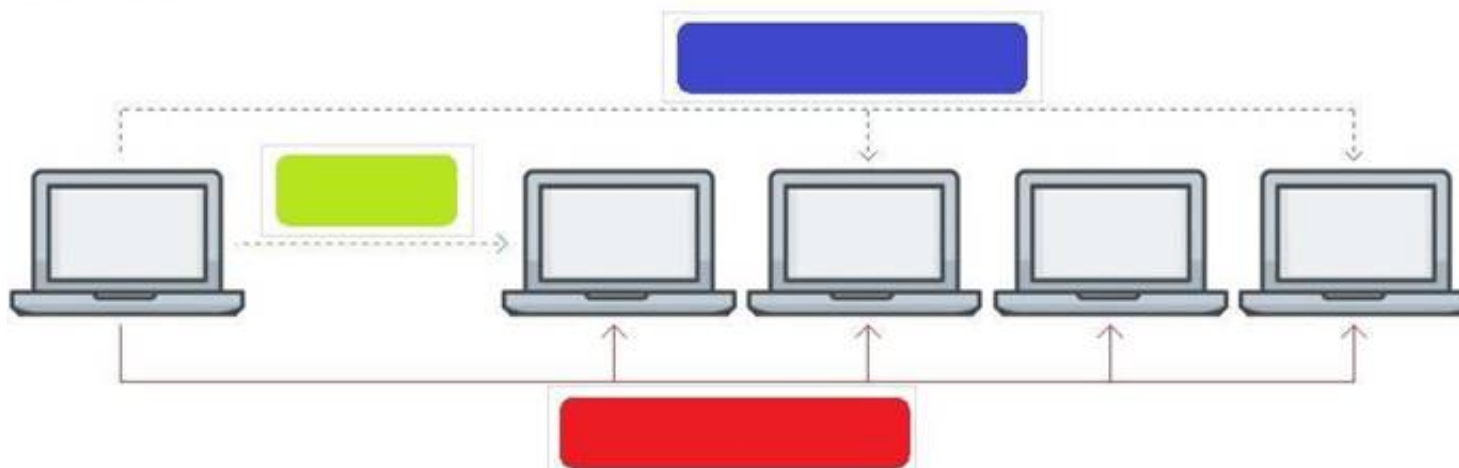
- A. show secondary
- B. show version detail
- C. show version
- D. show images

**Answer: D**

#### NEW QUESTION 10

Click on the colored box that corresponds with the line that best represents Broadcast traffic flow.

##### Answer Area

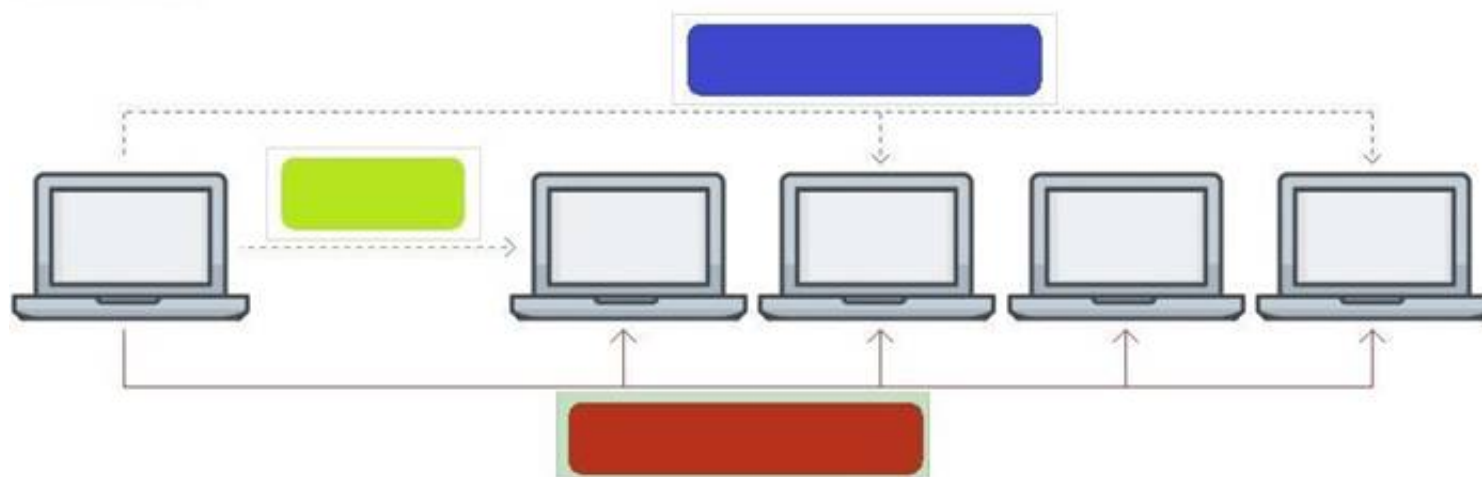


- A. Mastered
- B. Not Mastered

**Answer: A**

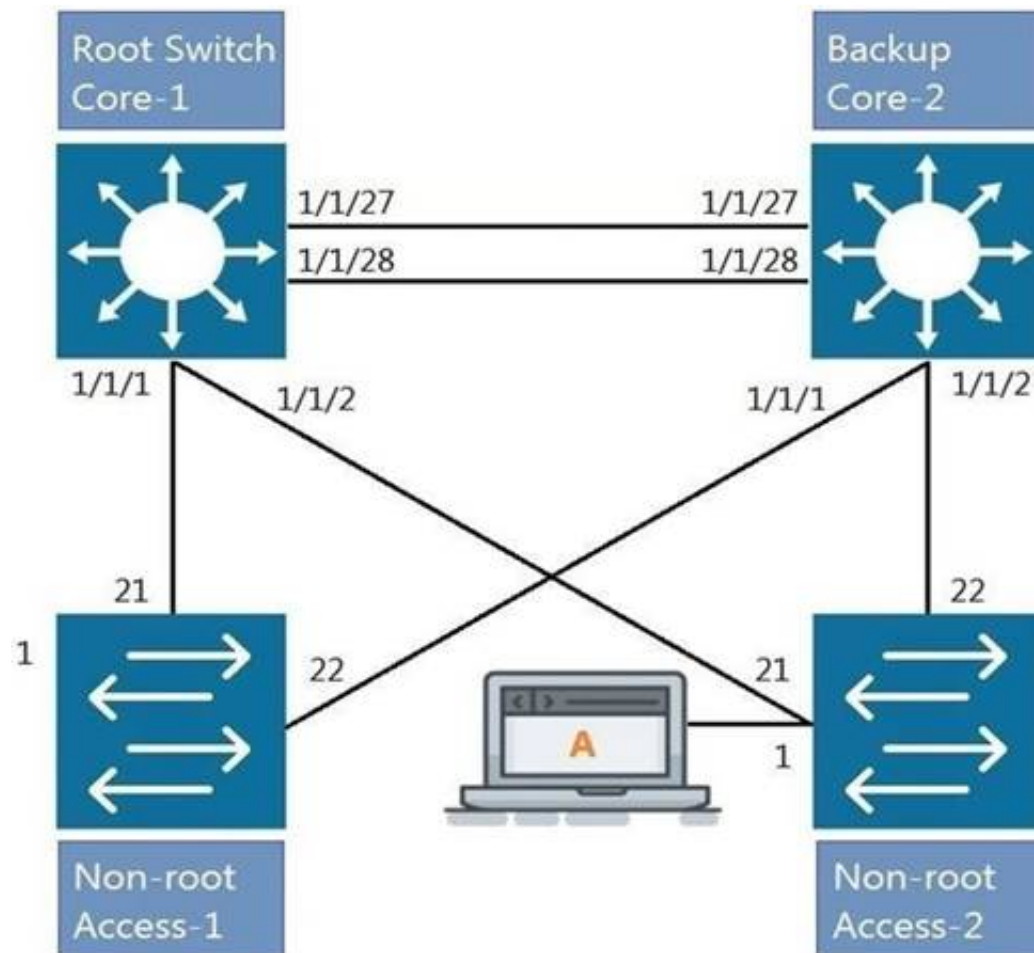
**Explanation:**

## Answer Area



### NEW QUESTION 11

Refer to the exhibit.



All four switches in the diagram have been configured with the region name "Aruba1".

What two other MSTP configurations must match for switches within the same MST region? (Choose two.)

- A. MST region type
- B. MST Bridge ID
- C. MST version number
- D. MST revision number
- E. MST VLAN to instance mapping

**Answer:** DE

### NEW QUESTION 13

What command will save your configuration on an Aruba AOS-CX switch so that your changes automatically load on next reboot?

- A. copy running-config checkpoint startup-config
- B. copy startup-config running-config
- C. copy running-config initial-checkpoint
- D. copy running-config default

**Answer:** A

### NEW QUESTION 17

What is Deep Packet Inspection?

- A. a machine learning method of packet inspection for the purpose of choosing which dynamic routing protocol to automatically assign
- B. a concept that applies to firewalls, when examining packets only up through Layer 4
- C. a function of Policy Based Routing that examines the entire IPv4 header to forward traffic based on factors other than destination address
- D. a firewall process of examining the packet header all the way to Layer 7 in order to determine if the packet should be permitted or denied

**Answer:** D

### NEW QUESTION 21

Which two options are the Layer 3 Routing protocols? (Choose two.)

- A. BGP
- B. LLDP
- C. OSPF
- D. MPLS
- E. 802.3ad

**Answer:** AC

**NEW QUESTION 26**

What are the benefits of a 3-Tier design over a 2-Tier? (Choose two.)

- A. Offloading processing from the Core without routing at the Access layer.
- B. Can use lower speed links between Core to Aggregation and Aggregation to Access given the use of an Aggregation layer.
- C. Lowering the cost of a deployment due to needing less switches overall.
- D. Better scalability in a campus with a large number of buildings.
- E. Gaining the flexibility to connect the Data-Center to any Access layer switch.

**Answer:** AD

**NEW QUESTION 29**

Which two statements accurately describe stacking with Aruba switches? (Choose two.)

- A. A VSF stack is allowed between an AOS-CX 6300M and 6300F switches.
- B. VSF is a core or aggregation layer stacking technology due to the high resiliency of sharing a single control plane.
- C. The VSF feature is not compatible between AOS-CX and AOS platforms.
- D. A VSF stack is allowed between an AOS 5400R and an AOS-CX 6400.
- E. VSF and VSX are stacking option with the AOS-CX 8320. 8325. 8400. and 6400 models.

**Answer:** BE

**NEW QUESTION 34**

.....

## Thank You for Trying Our Product

\* 100% Pass or Money Back

All our products come with a 90-day Money Back Guarantee.

\* One year free update

You can enjoy free update one year. 24x7 online support.

\* Trusted by Millions

We currently serve more than 30,000,000 customers.

\* Shop Securely

All transactions are protected by VeriSign!

**100% Pass Your HPE6-A72 Exam with Our Prep Materials Via below:**

<https://www.certleader.com/HPE6-A72-dumps.html>