



Microsoft

Exam Questions AZ-800

Administering Windows Server Hybrid Core Infrastructure

About ExamBible

[Your Partner of IT Exam](#)

Found in 1998

ExamBible is a company specialized on providing high quality IT exam practice study materials, especially Cisco CCNA, CCDA, CCNP, CCIE, Checkpoint CCSE, CompTIA A+, Network+ certification practice exams and so on. We guarantee that the candidates will not only pass any IT exam at the first attempt but also get profound understanding about the certificates they have got. There are so many alike companies in this industry, however, ExamBible has its unique advantages that other companies could not achieve.

Our Advances

* 99.9% Uptime

All examinations will be up to date.

* 24/7 Quality Support

We will provide service round the clock.

* 100% Pass Rate

Our guarantee that you will pass the exam.

* Unique Gurantee

If you do not pass the exam at the first time, we will not only arrange FULL REFUND for you, but also provide you another exam of your claim, ABSOLUTELY FREE!

NEW QUESTION 1

SIMULATION - (Topic 4)

Task 7

You need to monitor the security configuration of DC1 by using Microsoft Defender for Cloud.

The required source files are located in a folder named \\dc1.contoso.com\install.

- A. Mastered
- B. Not Mastered

Answer: A

Explanation:

One possible solution to monitor the security configuration of DC1 by using Microsoft Defender for Cloud is to use the Guest Configuration feature. Guest Configuration is a service that audits settings inside Linux and Windows virtual machines (VMs) to assess their compliance with your organization's security policies. You can use Guest Configuration to monitor the security baseline settings for Windows Server in the Microsoft Defender for Cloud portal by following these steps:

? On DC1, open a web browser and go to the folder named \\dc1.contoso.com\install.

Download the Guest Configuration extension file (GuestConfiguration.msi) and save it to a local folder, such as C:\Temp.

? Run the Guest Configuration extension file and follow the installation wizard. You can choose to install the extension for all users or only for the current user. For more information on how to install the Guest Configuration extension, see Install the Guest Configuration extension.

? After the installation is complete, sign in to the Microsoft Defender for Cloud portal (2).

? In the left pane, select Security Center and then Recommendations.

? In the recommendations list, find and select Vulnerabilities in security configuration on your Windows machines should be remediated (powered by Guest Configuration).

? In the Remediate Security Configurations page, you can see the compliance status of your Windows VMs, including DC1, based on the Azure Compute Benchmark.

The Azure Compute Benchmark is a set of rules that define the desired configuration state of your VMs. You can also see the number of failed, passed, and skipped rules for each VM. For more information on the Azure Compute Benchmark, see Microsoft cloud security benchmark: Azure compute benchmark is now available.

? To view the details of the security configuration of DC1, click on the VM name and then select View details. You can see the list of rules that apply to DC1 and their compliance status. You can also see the severity, description, and remediation steps for each rule. For example, you can see if DC1 has the latest security updates installed, if the firewall is enabled, if the password policy is enforced, and so on.

? To monitor the security configuration of DC1 over time, you can use the Compliance over time chart, which shows the trend of compliance status for DC1 in the past 30 days. You can also use the Compliance breakdown chart, which shows the distribution of compliance status for DC1 by rule severity.

By using Guest Configuration, you can monitor the security configuration of DC1 by using Microsoft Defender for Cloud and ensure that it meets your organization's security standards. You can also use Guest Configuration to monitor the security configuration of other Windows and Linux VMs in your Azure environment.

NEW QUESTION 2

SIMULATION - (Topic 4)

Task 1

You need to prevent domain users from saving executable files in a share named

\\SRV\Data. The users must be able to save other files to the share.

- A. Mastered
- B. Not Mastered

Answer: A

Explanation:

One possible solution to prevent domain users from saving executable files in a share named \\SRV\Data is to use file screening on the file server. File screening allows you to block certain files from being saved based on their file name extension. Here are the steps to configure file screening:

? On the file server, open File Server Resource Manager from the Administrative Tools menu.

? In the left pane, expand File Screening Management and click on File Groups.

? Right-click on File Groups and select Create File Group.

? In the File Group Properties dialog box, enter a name for the file group, such as Executable Files.

? In the Files to include box, enter the file name extensions that you want to block, such as .exe, .bat, .cmd, .com, .msi, .scr. You can use wildcards to specify multiple extensions, such as *.exe.

? Click OK to create the file group.

? In the left pane, click on File Screen Templates.

? Right-click on File Screen Templates and select Create File Screen Template.

? In the File Screen Template Properties dialog box, enter a name for the template, such as Block Executable Files.

? On the Settings tab, select the option Active screening. Do not allow users to save unauthorized files.

? On the File Groups tab, check the box next to the file group that you created, such as Executable Files.

? On the Notification tab, you can configure how to notify users and administrators when a file screening event occurs, such as sending an email, logging an event, or running a command or script. You can also customize the message that users see when they try to save a blocked file.

? Click OK to create the file screen template.

? In the left pane, click on File Screens.

? Right-click on File Screens and select Create File Screen.

? In the Create File Screen dialog box, enter the path of the folder that you want to apply the file screening to, such as \\SRV\Data.

? Select the option Derive properties from this file screen template (recommended) and choose the template that you created, such as Block Executable Files.

? Click Create to create the file screen.

Now, domain users will not be able to save executable files in the share named \\SRV\Data. They will be able to save other files to the share.

NEW QUESTION 3

- (Topic 3)

Your network contains an Active Directory Domain Services (AD DS) domain named contoso.com. The domain contains a DNS server named Server1. Server1 hosts a DNS zone named fabrikam.com that was signed by DNSSEC.

You need to ensure that all the member servers in the domain perform DNSSEC validation for the fabrikam.com namespace. What should you do?

- A. On Served, run the Add-DnsServerTrustAnchor cmdlet.
- B. On each member server, run the Add-DnsServerTrustAnchor cmdlet.
- C. From a Group Policy Object (GPO). add a rule to the Name Resolution Policy Table (NRPT).
- D. From a Group Policy Object (GPO). modify the Network List Manager policies.

Answer: C

NEW QUESTION 4

HOTSPOT - (Topic 3)

You have a Windows Server container host named Server1.

You start the containers on Server1 as shown in the following table.

Name	Image	Uses Hyper-V isolation	Process running on container
Container1	microsoft/iis	No	ProcessA
Container2	microsoft/iis	No	ProcessB
Container3	microsoft/iis	Yes	ProcessC
Container4	microsoft/iis	Yes	ProcessD

You need to validate the status of ProcessA and ProcessC.

Where can you verify that ProcessA and ProcessC are in a running state? To answer, select the appropriate options in the answer area.

NOTE: Each correct selection is worth one point.

Answer Area

ProcessA:

ProcessC:

- A. Mastered
- B. Not Mastered

Answer: A

Explanation:

Answer Area

ProcessA:

ProcessC:

NEW QUESTION 5

- (Topic 3)

Your network contains an Active Directory Domain Services (AD DS) domain named contoso.com. The domain contains two servers named Server1 and Server2. Server1 contains a disk named Disk2. Disk2 contains a folder named UserData. UserData is shared to the Domain Users group. Disk2 is configured for deduplication. Server1 is protected by using Azure Backup.

Server1 fails.

You connect Disk2 to Server2.

You need to ensure that you can access all the files on Disk2 as quickly as possible. What should you do?

- A. Create a storage pool.
- B. Restore files from Azure Backup.
- C. Install the File Server Resource Manager server role.
- D. Install the Data Deduplication server role.

Answer: C

Explanation:

Reference:

<https://docs.microsoft.com/en-us/windows-server/storage/data-deduplication/overview>

NEW QUESTION 6

- (Topic 3)

You have a server that runs Windows Server and contains a shared folder named UserData.

You need to limit the amount of storage space that each user can consume in UserData. What should you use?

- A. Storage Spaces
- B. Work Folders
- C. Distributed File System (DFS) Namespaces
- D. File Server Resource Manager (FSRM)

Answer: D

Explanation:

Reference:
<https://docs.microsoft.com/en-us/windows-server/storage/fsrm/fsrm-overview>

NEW QUESTION 7

- (Topic 3)
You have an Azure virtual machine named VM1 that has a private IP address only. You configure the Windows Admin Center extension on VM1. You have an on-premises computer that runs Windows 11. You use the computer for server management. You need to ensure that you can use Windows Admin Center from the Azure portal to manage VM1. What should you configure?

- A. an Azure Bastion host on the virtual network that contains VM1.
- B. a VPN connection to the virtual network that contains VM1.
- C. a network security group (NSG) rule that allows inbound traffic on port 443.
- D. a private endpoint on the virtual network that contains VM1.

Answer: B

Explanation:

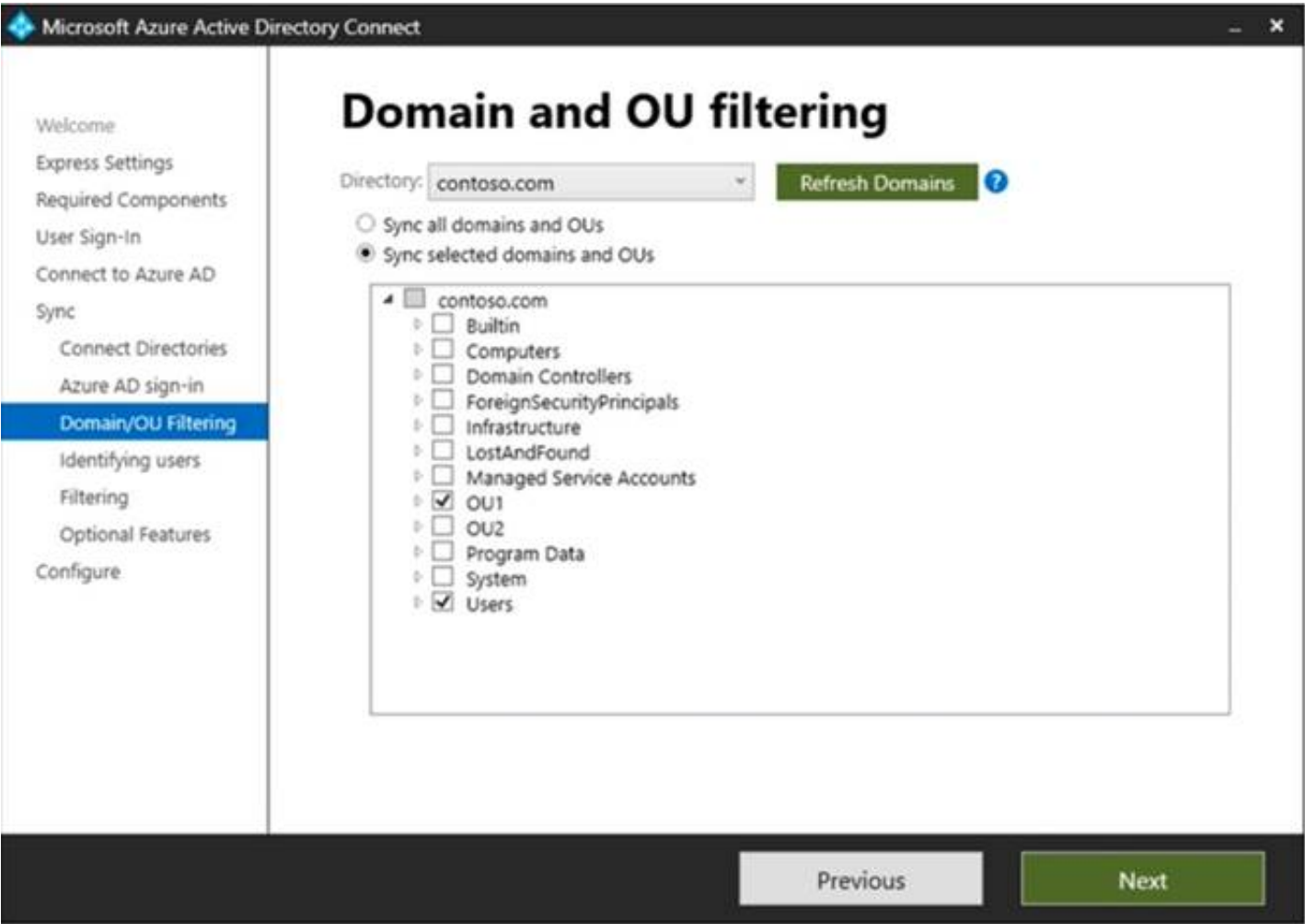
Reference:
<https://docs.microsoft.com/en-us/windows-server/manage/windows-admin-center/azure/manage-vm>

NEW QUESTION 8

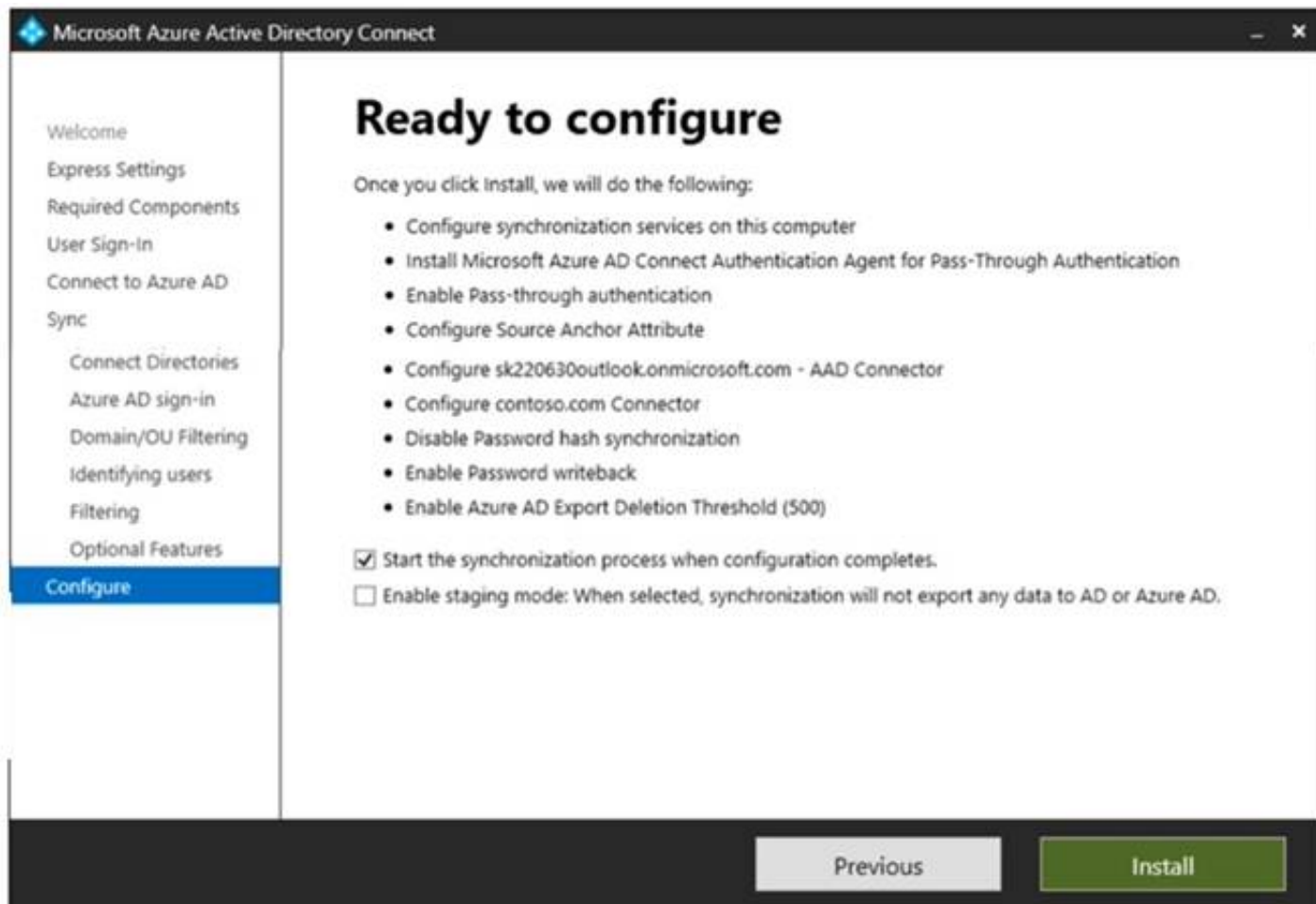
HOTSPOT - (Topic 3)
Your network contains an on-premises Active Directory Domain Services (AD DS) domain named contoso.com that syncs with an Azure AD tenant. The tenant contains a group named Group1 and the users shown in the following table.

Name	In organizational unit (OU)
User1	OU1
User2	OU2

Domain/OU filtering in Azure AD Connect is configured as shown in the Filtering exhibit. (Click the Filtering tab.)



You review the Azure AD Connect configurations as shown in the Configure exhibit. (Click the Configure tab.)



For each of the following statements, select Yes if the statement is true. Otherwise, select No. NOTE: Each correct selection is worth one point.

Answer Area

Statements	Yes	No
User1 can use self-service password reset (SSPR) to reset his password.	<input type="radio"/>	<input type="radio"/>
If User1 connects to Microsoft Exchange Online, an on-premises domain controller provides authentication.	<input type="radio"/>	<input type="radio"/>
You can add User2 to Group1 as a member.	<input type="radio"/>	<input type="radio"/>

- A. Mastered
B. Not Mastered

Answer: A

Explanation:

Answer Area

Statements	Yes	No
User1 can use self-service password reset (SSPR) to reset his password.	<input type="radio"/>	<input checked="" type="radio"/>
If User1 connects to Microsoft Exchange Online, an on-premises domain controller provides authentication.	<input type="radio"/>	<input checked="" type="radio"/>
You can add User2 to Group1 as a member.	<input type="radio"/>	<input checked="" type="radio"/>

NEW QUESTION 9

- (Topic 3)

Your network contains an Active Directory Domain Services (AD DS) domain- The domain contains 10 servers that run Windows Server. The servers have static IP addresses.

You plan to use DHCP to assign IP addresses to the servers.

You need to ensure that each server always receives the same IP address.

Which type of identifier should you use to create a DHCP reservation for each server?

- A. universally unique identifier (UUID)
B. fully qualified domain name (FQDN)
C. NetBIOS name
D. MAC address

Answer: D

Explanation:

Reference:

<https://docs.microsoft.com/en-us/powershell/module/dhcpserver/add-dhcpserverv4reservation?view=windowsserver2022-ps>

NEW QUESTION 10

HOTSPOT - (Topic 3)

Your on-premises network contains a server named Server1 and uses an IP address space of 192.168.10.0/24.

You have an Azure virtual network that contains a subnet named Subnet1. Subnet1 uses an IP address space of 192.168.10.0/24.

You need to migrate Server1 to Subnet1. You must use Azure Extended Network to maintain the existing IP address of Server1.

What is the minimum number of virtual machines that you should deploy? To answer, select the appropriate options in the answer area.
NOTE: Each correct selection is worth one point

Answer Area

Virtual machines that run Windows Server 2022 Azure Edition:

Virtual machines that run Windows Server 2019 or Windows Server 2022:

- A. Mastered
B. Not Mastered

Answer: A

Explanation:

Answer Area

Virtual machines that run Windows Server 2022 Azure Edition:

Virtual machines that run Windows Server 2019 or Windows Server 2022:

NEW QUESTION 10

- (Topic 3)

You have an Azure virtual machine named VM1 that runs Windows Server and has the following configurations:

- ? Size: D2s_v4
- ? Operating system disk: 127-GiB standard SSD
- ? Data disk 128-GiB standard SSD
- ? Virtual machine generation: Gen 2

You plan to perform the following changes to VM1:

- ? Change the virtual machine size to D4s_v4.
- ? Detach the data disk.
- ? Add a new standard SSD.

Which changes require downtime for VM1?

- A. Detaching the data disk only and adding a new standard SSD.
B. Detaching the data disk only.
C. Changing the virtual machine size only.
D. Adding a new standard SSD only.

Answer: C

Explanation:

Data disks can be added and detached without requiring downtime. Changing the VM size requires the VM to be restarted.

NEW QUESTION 15

HOTSPOT - (Topic 3)

You have an Azure subscription that contains a virtual network named VNet1. Vnet1 contains three subnets named Subnet1, Subnet2, and Subnet3. You deploy a virtual machine that has the following settings:

- Name: VM1
- Subnet: Subnet2
- Network interface name: NIC1
- Operating system: Windows Server 2022

You need to ensure that VM1 can route traffic between Subnet1 and Subnet3. The solution must minimize administrative effort.

What should you do? To answer, select the appropriate options in the answer area. NOTE: Each correct selection is worth one point.

Answer Area

From the Azure portal:

On VM1:

- A. Mastered

B. Not Mastered

Answer: A

Explanation:

Answer Area

From the Azure portal:

On VM1:

Associate a routing table with Subnet2.

Associate a routing table with Subnet2.

Attach two additional interfaces to VM1.

Enable IP forwarding for NIC1.

Install and configure a network controller.

Install and configure a network controller.

Install and configure Routing and Remote Access.

Run the route add command.

NEW QUESTION 18

DRAG DROP - (Topic 3)

Your network contains a single domain Active Directory Domain Services (AD DS) forest named contoso.com. The forest contains a single Active Directory site. You plan to deploy a read only domain controller (RODC) to a new datacenter on a server named Server1. A user named User1 is a member of the local Administrators group on Server1.

You need to recommend a deployment plan that meets the following requirements:

- ? Ensures that a user named User1 can perform the RODC installation on Server1
- ? Ensures that you can control the AD DS replication schedule to the Server1
- ? Ensures that Server1 is in a new site named RemoteSite1
- ? Uses the principle of least privilege

Which three actions should you recommend performing in sequence? To answer, move the appropriate actions from the list of actions to the answer area and arrange them in the correct order.

Actions

Answer Area

Instruct User1 to run the Active Directory Domain Services installation Wizard on Server1.

Create a site and a subnet.

Create a site link.

Pre-create an RODC account.

Add User1 to the Contoso\Administrators group.

>

<

A. Mastered

B. Not Mastered

Answer: A

Explanation:

Box 1.

We need to create a site and subnet for the remote site. The new site will be added to the Default IP Site Link so we don't need to create a new site link. You configure the replication schedule on the site link.

Box 2.

When we pre-create an RODC account, we can specify who is allowed to attach the server to the prestaged account. This means that the User1 does not need to be added to the Domain Admins group.

Box3.

User1 can connect the RODC to the prestaged account by running the AD DS installation wizard.

NEW QUESTION 20

- (Topic 3)

Your network contains a DHCP server.

You plan to add a new subnet and deploy Windows Server to the subnet. You need to use the server as a DHCP relay agent.

Which role should you install on the server?

- A. Network Policy and Access Services
- B. Remote Access
- C. Network Controller
- D. DHCP Server

Answer: B

NEW QUESTION 21

- (Topic 3)

You have an Azure virtual machine named VM1 that runs Windows Server. You have an Azure subscription that has Microsoft Defender for Cloud enabled. You need to ensure that you can use the Azure Policy guest configuration feature to manage VM1. What should you do?

- A. Add the PowerShell Desired State Configuration (DSC) extension to VM1.
- B. Configure VM1 to use a user-assigned managed identity.
- C. Configure VM1 to use a system-assigned managed identity.
- D. Add the Custom Script Extension to VM1.

Answer: C

Explanation:
Reference:
<https://docs.microsoft.com/en-us/azure/virtual-machines/extensions/guest-configuration>

NEW QUESTION 24

DRAG DROP - (Topic 3)
You have a server named Server1 that has Windows Admin Center installed. The certificate used by Windows Admin Center was obtained from a certification authority (CA).
The certificate expires.
You need to replace the certificate.
Which three actions should you perform in sequence? To answer, move the appropriate actions from the list of actions to the answer area and arrange them in the correct order.

Actions

Copy the certificate thumbprint.

From Internet Information Services (IIS) Manager, bind a certificate.

Rerun Windows Admin Center Setup and select Change.

Rerun Windows Admin Center Setup and select Repair.

Rerun Windows Admin Center Setup and select Remove.

Answer Area

>

<

- A. Mastered
- B. Not Mastered

Answer: A

Explanation:

Actions

Copy the certificate thumbprint.

From Internet Information Services (IIS) Manager, bind a certificate.

Rerun Windows Admin Center Setup and select Change.

Rerun Windows Admin Center Setup and select Repair.

Rerun Windows Admin Center Setup and select Remove.

Answer Area

From Internet Information Services (IIS) Manager, bind a certificate.

Copy the certificate thumbprint.

Rerun Windows Admin Center Setup and select Change.

NEW QUESTION 25

HOTSPOT - (Topic 3)
You have an onpremises DNS server named Server1 that runs Windows Server. Server 1 hosts a DNS zone named fabrikam.com
You have an Azure subscription that contains the resources shown in the following table.

Name	Type	Description
Vnet1	Virtual network	Connects to the on-premises network by using a Site-to-Site VPN
VM1	Virtual machine	Runs Windows Server and has the DNS Server role installed
contoso.com	Private DNS zone	Linked to Vnet1
contoso.com	Public DNS zone	Contains the DNS records of all the platform as a service (PaaS) resources

Answer Area

On Vnet1:

Configure VM1 to forward requests for the contoso.com zone to the public DNS zone.
 Configure Vnet1 to use a custom DNS server that is set to the Azure-provided DNS at 168.63.129.16.
 Configure VM1 to forward requests for the contoso.com zone to the Azure-provided DNS at 168.63.129.16.

On the on-premises network:

Configure forwarding for the contoso.com zone to VM1.
 Configure forwarding for the contoso.com zone to the public DNS zone.
 Configure forwarding for the contoso.com zone to the Azure-provided DNS at 168.63.129.16.

- A. Mastered
 B. Not Mastered

Answer: A

Explanation:

Answer Area

On Vnet1:

Configure VM1 to forward requests for the contoso.com zone to the public DNS zone.
 Configure Vnet1 to use a custom DNS server that is set to the Azure-provided DNS at 168.63.129.16.
 Configure VM1 to forward requests for the contoso.com zone to the Azure-provided DNS at 168.63.129.16.

On the on-premises network:

Configure forwarding for the contoso.com zone to VM1.
 Configure forwarding for the contoso.com zone to the public DNS zone.
 Configure forwarding for the contoso.com zone to the Azure-provided DNS at 168.63.129.16.

NEW QUESTION 26

- (Topic 3)

You have an Active Directory domain that contains a file server named Server1. Server1 runs Windows Server and includes the file shares shown in the following table.

Share Name	Path
Users	D:\Users
Accounts	D:\Dept\Accounts
Marketing	D:\Dept\Marketing
CustomerService	D:\Dept\CustomerService

When users login to the network they receive the following network drive mappings.

- H: maps to Wserver1\users\%UserName%
- G: maps to \\server1\%Department%

You need to limit the amount of space consumed by user's on Server!. The solution must meet the following requirements:

- Prevent users using more than 5GB of space on their H: drive
- Prevent Accounts department users from using more than 10GB of space on the G: drive
- Prevent Marketing department users from using more than 15GB of space on the G: drive
- Prevent Customer Service department users from using more than 2GB of space on the G: drive
- Minimize administrative effort What should you use?

- A. File Server Resource Manager (FSRM) quotas
 B. Storage tiering
 C. NTFS Disk quotas
 D. Group Policy Preferences

Answer: A

NEW QUESTION 27

HOTSPOT - (Topic 3)

You plan to deploy an Azure virtual machine that will run Windows Server.

You need to ensure that an Azure Active Directory (Azure AD) user named user1@contoso.com can connect to the virtual machine by using the Azure Serial Console.
What should you do? To answer, select the appropriate options in the answer area. NOTE: Each correct selection is worth one point.

Answer Area

Configure on the Azure virtual machine:

Boot diagnostics with a custom storage account
Operating system guest diagnostics
A system-assigned managed identity

Assign the following role to User1:

Virtual Machine Contributor
Virtual Machine Administrator Login
Virtual Machine User Login

- A. Mastered
- B. Not Mastered

Answer: A

Explanation:

Answer Area

Configure on the Azure virtual machine:

Boot diagnostics with a custom storage account
Operating system guest diagnostics
A system-assigned managed identity

Assign the following role to User1:

Virtual Machine Contributor
Virtual Machine Administrator Login
Virtual Machine User Login

NEW QUESTION 30

DRAG DROP - (Topic 3)

You have a server named Server1 that runs Windows Server and has the Hyper V server role installed. Server1 hosts a virtual machine named VM1. Server1 has an NVMe storage device. The device is currently assigned to VM1 by using Discrete Device Assignment. You need to make the device available to Server1.
Which four actions should you perform in sequence? To answer, move the appropriate actions from the list of actions to the answer area and arrange them in the correct order.

Actions

From Server1, stop VM1.

From Server1, run the Remove-VMAssignableDevice cmdlet.

From Server1, run the Mount-VMHostAssignableDevice cmdlet.

From Server1, enable the device by using Device Manager.

From VM1, disable the device by using Device Manager.



Answer Area

- A. Mastered
- B. Not Mastered

Answer: A

Explanation:

Actions

From Server1, stop VM1.

From Server1, run the Remove-VMAssignableDevice cmdlet.

From Server1, run the Mount-VMHostAssignableDevice cmdlet.

From Server1, enable the device by using Device Manager.

From VM1, disable the device by using Device Manager.



Answer Area

From Server1, stop VM1.

From Server1, run the Remove-VMAssignableDevice cmdlet.

From Server1, run the Mount-VMHostAssignableDevice cmdlet.

From Server1, enable the device by using Device Manager.

NEW QUESTION 31

HOTSPOT - (Topic 3)

Your network contains an Active Directory Domain Services (AD DS) domain. The domain contains the domain controllers shown in the following table.

Name	Description
DC1	Has the schema master, infrastructure master, and domain naming master roles
DC2	Has the PDC emulator and RID master roles and is a global catalog server
DC3	None

You need to configure DC3 to be the authoritative time server for the domain.

Which operations master role should you transfer to DC3, and which console should you use? To answer, select the appropriate options in the answer area.

NOTE: Each correct selection is worth one point.

Answer Area

Role:

PDC emulator

Domain naming master

Infrastructure master

PDC emulator

RID master

Schema master

Console:

Active Directory Users and Computers

Active Directory Admin

Active Directory Doma

Active Directory Sites & Services

Active Directory Users and Computers

- A. Mastered
- B. Not Mastered

Answer: A

Explanation:

Answer Area

Role:

PDC emulator

Domain naming master

Infrastructure master

PDC emulator

RID master

Schema master

Console:

Active Directory Users and Computers

Active Directory Admin

Active Directory Doma

Active Directory Sites & Services

Active Directory Users and Computers

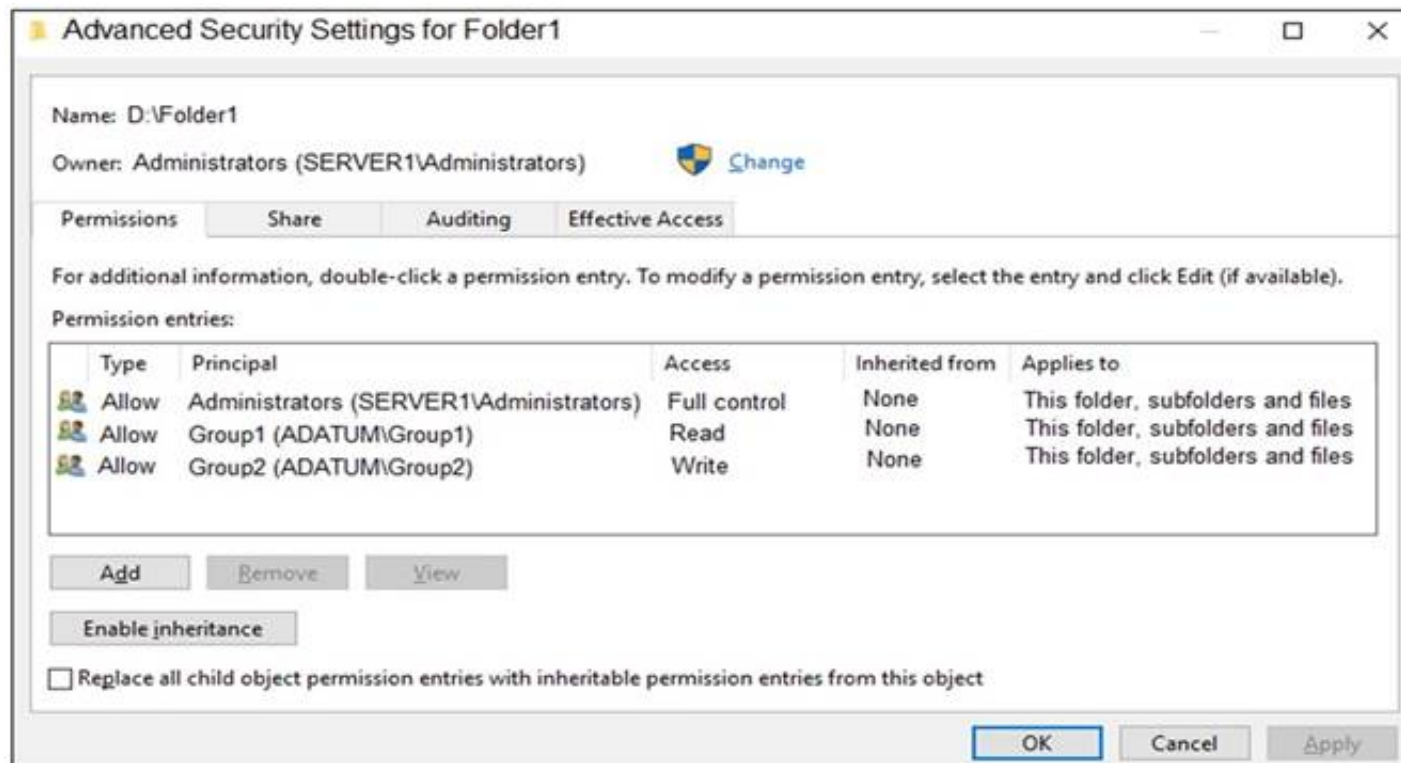
NEW QUESTION 33

HOTSPOT - (Topic 3)

Your network contains an Active Directory Domain Services (AD DS) domain named adatum.com. The domain contains a server named Server1 and the users shown in the following table.

Name	Member of
User1	Group1
User2	Group2
User3	Group3

Server1 contains a folder named D:\Folder1. The advanced security settings for Folder1 are configured as shown in the Permissions exhibit. (Click the Permissions tab.)



Folder1 is shared by using the following configurations:

```
Path           : D:\Folder1
Name           : Share1
ShareType      : FileSystemDirectory
FolderEnumerationMode : Unrestricted
```

The share permissions for Share1 are shown in the following table.

Group	Permission
Group1	Allow – Change
Group3	Allow – Full Control

For each of the following statements, select Yes if the statement is true. Otherwise, select No.

NOTE: Each correct selection is worth one point.

Statements

Yes

No

User1 can read the files in Share1.

☐
☐

User3 can delete files in Share1.

☐
☐

If User2 connects to \\Server1.adatum.com from File Explorer, Share1 will be listed.

☐
☐

- A. Mastered
- B. Not Mastered

Answer: A

Explanation:

To access files in a shared folder, you need to be granted permissions on the folder (NTFS permissions) AND permissions on the share. The most restrictive permission of the folder permissions and share permissions apply.

Box 1: Yes

Group1 has Read access to Folder1 and Change access to Share1. Therefore, User1 can read the files in Share1.

Box 2: No

Group3 has Full Control access to Share1. However, Group3 has no permissions configured Folder1. Therefore, User3 cannot access the files in Share1.

Box 3: Yes

Group2 has write permission to Folder1. However, Group2 has no permission on Share1. Therefore, users in Group2 cannot access files in the shared folder.

Access Based Enumeration when enabled hides files and folders that users do not have permission to access. However, Access Based Enumeration is not enabled on Share1.

This is indicated by the FolderEnumerationMode – Unrestricted setting. Therefore, the share will be visible to User2 even though User2 cannot access the shared folder.

NEW QUESTION 34

HOTSPOT - (Topic 3)

You have 10 on-premises servers that run Windows Server.

You plan to use Azure Network Adapter to connect the servers to the resources in Azure.
Which prerequisites do you require on-premises and in Azure? To answer, select the appropriate options in the answer area.
NOTE: Each correct selection is worth one point.

To configure the on-premises servers, use:

Azure CLI
Routing and Remote Access
Server Manager
Windows Admin Center

To connect the Azure resources and Azure Network Server Manager Adapter, use:

Azure Bastion
Azure Firewall
An Azure virtual network gateway
A private endpoint
A public Azure Load Balancer

- A. Mastered
- B. Not Mastered

Answer: A

Explanation:

To configure the on-premises servers, use:

Azure CLI
Routing and Remote Access
Server Manager
Windows Admin Center

To connect the Azure resources and Azure Network Server Manager Adapter, use:

Azure Bastion
Azure Firewall
An Azure virtual network gateway
A private endpoint
A public Azure Load Balancer

NEW QUESTION 37

DRAG DROP - (Topic 3)
You have a disaggregated cluster deployment. The deployment contains a scale-out file server (SOFS) cluster that runs Windows Server and a compute duster that has the Hyper- V role enabled.
You need to implement Storage Quality of Service (QoS). The solution must ensure that you can control the bandwidth usage between the SOFS cluster and the Hyper-V cluster.
Which cmdlet should you run on each cluster? To answer, drag the appropriate cmdlets to the correct clusters. Each cmdlet may be used once, more than once, or not at all. You may need to drag the split bar between panes or scroll to view content.
NOTE: Each correct selection is worth one point.

Cmdlets

New-StorageQosPolicy

Set-VPHardDiskDrive

Set-VHSan

Answer Area

SOFS:

Hyper-V:

- A. Mastered
- B. Not Mastered

Answer: A

Explanation:

Cmdlets

New-StorageQosPolicy

Set-VPHardDiskDrive

Set-VHSan

Answer Area

SOFS:

New-StorageQosPolicy

Hyper-V:

Set-VPHardDiskDrive

NEW QUESTION 39

HOTSPOT - (Topic 3)

Your network contains an Active Directory Domain Services (AD DS) domain named contoso.com. The domain contains a server named Server1 that has the DFS Namespaces role service installed. Server1 hosts a domain-based Distributed File System (DFS) Namespace named Files.

The domain contains a file server named Server2. Server2 contains a shared folder named Share1. Share1 contains a subfolder named Folder1.

In the Files namespace, you create a folder named Folder1 that has a target of

\\Server2.contoso.com\Share1\Folder1.

You need to configure a logon script that will map drive letter M to Folder1. The solution must use the path of the DFS Namespace.

How should you complete the command to map the drive letter? To answer, select the appropriate options in the answer area.

NOTE: Each correct selection is worth one point.

Answer Area



- A. Mastered
- B. Not Mastered

Answer: A

Explanation:

Answer Area



NEW QUESTION 43

- (Topic 3)

Your network contains an Active Directory Domain Services (AD DS) domain named contoso.com.

You need to identify which server is the PDC emulator for the domain.

Solution: from Active Directory Users and Computers, you right-click contoso.com in the console tree, and then select Operations Master

Does this meet the goal?

- A. Yes
- B. No

Answer: A

NEW QUESTION 46

HOTSPOT - (Topic 3)

You have a Windows Server container host named Server1 that has a single disk. On Server1, you plan to start the containers shown in the following table.

Name	Description
Container1	Container1 is a Windows container that contains a web app in development. The container must NOT share a kernel with other containers.
Container2	Container2 is a Linux container that runs a web app. The container requires two static IP addresses.
Container3	Container3 is a Windows container that runs a database. The container requires a static IP address.

Which isolation mode can you use for each container? To answer, select the appropriate options in the answer area.

NOTE: Each correct selection is worth one point.

Container1:

Hyper-V isolation only
Process isolation only
Hyper-V isolation or process isolation

Container2:

Hyper-V isolation only
Process isolation only
Hyper-V isolation or process isolation

Container3:

Hyper-V isolation only
Process isolation only
Hyper-V isolation or process isolation

- A. Mastered
 B. Not Mastered

Answer: A

Explanation:

Container1:

Hyper-V isolation only
Process isolation only
Hyper-V isolation or process isolation

Container2:

Hyper-V isolation only
Process isolation only
Hyper-V isolation or process isolation

Container3:

Hyper-V isolation only
Process isolation only
Hyper-V isolation or process isolation

NEW QUESTION 49

HOTSPOT - (Topic 3)

Your network contains an Active Directory Domain Services (AD DS) domain named contoso.com.

The network contains the servers shown in the following table.

Name	Role	Domain/workgroup	Operating system
DC1	Active Directory Domain Services, DNS Server	contoso.com	Windows Server
Server1	DHCP Server	contoso.com	Windows Server
Server2	None	contoso.com	Windows Server Core
Server3	None	Workgroup1	Windows Server Core

You plan to implement IP Address Management (IPAM).

You need to use the Group Policy based provisioning method for managed servers. The solution must support server discovery.

What should you do? To answer, select the appropriate options in the answer area. NOTE: Each correct selection is worth one point.

Answer Area

Server on which to deploy the IPAM server role: 

Servers that must be provisioned for IPAM: 


- A. Mastered
B. Not Mastered

Answer: A

Explanation:

Answer Area

Server on which to deploy the IPAM server role: 

Servers that must be provisioned for IPAM: 

NEW QUESTION 52

- (Topic 3)

You have an Azure virtual machine named Served that runs a network management application. Server1 has the following network configurations:

- Network interface: Nic1
- IP address. 10.1.1.1/24
- Connected to: VnetVSubnet1

You need to connect Server1 to an additional subnet named Vnet1/Subnet2. What should you do?

- A. Modify the IP configurations of Nic1.
B. Add a network interface to Server1.
C. Add an IP configuration to Nic1.
D. Create a private endpoint on Subnet2

Answer: D

NEW QUESTION 53

- (Topic 3)

Your network contains an Active Directory Domain Services (AD DS) domain.

You have a Group Policy Object (GPO) named GPO1 that contains Group Policy preferences.

You plan to link GPO1 to the domain.

You need to ensure that the preference in GPO1 apply only to domain member servers and NOT to domain controllers or client computers. All the other Group Policy settings in GPO1 must apply to all the computers. The solution must minimize administrative effort.

Which type of item level targeting should you use?

- A. Domain
B. Operating System
C. Security Group
D. Environment Variable

Answer: B

Explanation:

Reference:

[https://docs.microsoft.com/en-us/previous-versions/windows/it-pro/windows-server-2012-r2-and-2012/dn789189\(v=ws.11\)#operating-system-targeting](https://docs.microsoft.com/en-us/previous-versions/windows/it-pro/windows-server-2012-r2-and-2012/dn789189(v=ws.11)#operating-system-targeting)

NEW QUESTION 58

DRAG DROP - (Topic 3)

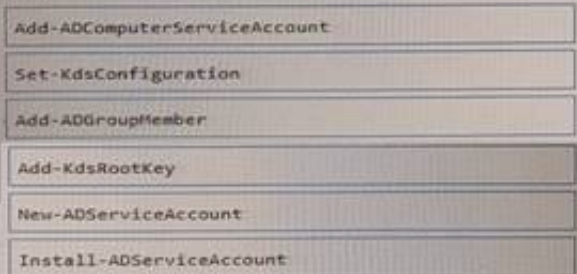
You deploy a single-domain Active Directory Domain Services (AD DS) forest named contoso.com.

You deploy a server to the domain and configure the server to run a service.

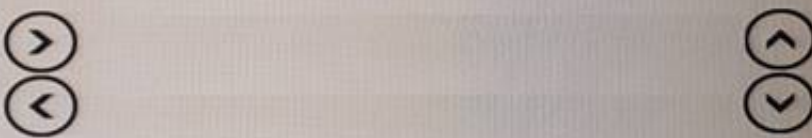
You need to ensure that the service can use a group managed service account (gMSA) to authenticate.

Which three PowerShell cmdlets should you run in sequence? To answer, move the appropriate cmdlets from the list of cmdlets to the answer area and arrange them in the correct order.

Cmdlets



Answer Area



- A. Mastered

B. Not Mastered

Answer: A

Explanation:



NEW QUESTION 62

DRAG DROP - (Topic 3)

You have a server named Server1.

You plan to use Storage Spaces to expand the storage available to Server1. You attach eight physical disks to Server1. Four disks are HDDs and four are SSDs. You need to create a volume on Server1 that will use the storage on all the new disks. The solution must provide the fastest read performance for frequently used files.

Which three actions should you perform in sequence? To answer, move the appropriate actions from the list of actions to the answer area and arrange them in the correct order.

Actions

Create a virtual disk.

Create each new disk into a dynamic disk.

Create a storage pool.

Create a spanned volume.

Create each new disk into a GPT disk.

Create a simple volume

Answer Area

- A. Mastered
- B. Not Mastered

Answer: A

Explanation:

Actions

Create a virtual disk.

Create each new disk into a dynamic disk.

Create a storage pool.

Create a spanned volume.

Create each new disk into a GPT disk.

Create a simple volume

Answer Area

Create a storage pool.

Create a virtual disk.

Create a simple volume

NEW QUESTION 65

- (Topic 3)

You have an on premises Active Directory Domain Services (AD DS) domain that syncs with an Azure Active Directory (Azure AD) tenant.

You plan to implement self-service password reset (SSPR) in Azure AD.

You need to ensure that users that reset their passwords by using SSPR can use the new password resources in the AD DS domain.

What should you do?

- A. Deploy the Azure AD Password Protection proxy service to the on premises network.
- B. Run the Microsoft Azure Active Directory Connect wizard and select Password writeback.
- C. Grant the Change password permission for the domain to the Azure AD Connect service account.

D. Grant the impersonate a client after authentication user right to the Azure AD Connect service account.

Answer: B

Explanation:

Reference:

<https://docs.microsoft.com/en-us/azure/active-directory/authentication/tutorial-enable-sspr- writeback>

NEW QUESTION 70

HOTSPOT - (Topic 3)

You need to sync files from an on-premises server named Server1 to Azure by using Azure File Sync. You have a cloud tiering policy that is configured for 30 percent free space and 70 days. Volume f on Server1 is 500 GB. A year ago, you configured E:\Oata on Server1 to sync by using Azure File Sync. The files that are visible in E:\Data are shown in the following table.

Name	Size	Last accessed
File1	200 GB	2 days ago
File2	100 GB	10 days ago
File3	200 GB	60 days ago
File4	50 GB	100 days ago

Volume E does NOT contain any other files. Where are File1 and flle3 located? To answer, select the appropriate options In the answer area.

Answer Area

File1:

Server1 only

The Azure file share only

Server1 and the Azure file share

File3:

Server1 only

The Azure file share only

Server 1 and the Azure file share

- A. Mastered
- B. Not Mastered

Answer: A

Explanation:

Answer Area

File1:

Server1 only

The Azure file share only

Server1 and the Azure file share

File3:

Server1 only

The Azure file share only

Server 1 and the Azure file share

NEW QUESTION 72

- (Topic 3)

You have two servers that have the Hyper-V server role installed. The servers are joined to a failover cluster both servers can connect to the same disk on an iSCSI storage device. You plan to use the iSCSI storage to store highly available Hyper-V virtual machines that will support live migration functionality. You need to configure a storage resource in the failover cluster to store the virtual machines. What should you configure?

- A. a storage pool
- B. attributed File System (DFS) Replication
- C. a mirrored volume
- D. Cluster Shared volumes (CSV)

Answer: D

NEW QUESTION 76

- (Topic 3)

Your network contains a Active Directory Domain Service (AD DS) forest named contoso.com. The forest root domain contains a server named server1. contoso.com.

A two-way forest trust exists between the contoso.com forest and an AD DS forest named fabrikam.com. The fabrikam.com forest contains 10 child domains. You need to ensure that only the members of a group named fabrikam\Group1 can authenticate to server1.contoso.com. What should you do first?

- A. Change the trust to a one-way external trust.
- B. Add fabrikam\Group1 to the local Users group on server1.contoso.com.
- C. Enable SID filtering for the trust.
- D. Enable Selective authentication for the trust.

Answer: B

NEW QUESTION 81

- (Topic 3)

You have an on-premises Active Directory Domain Services (AD DS) domain that syncs with an Azure Active Directory (Azure AD) tenant.

You have several Windows 10 devices that are Azure AD hybrid-joined.

You need to ensure that when users sign in to the devices, they can use Windows Hello for Business.

Which optional feature should you select in Azure AD Connect?

- A. Device writeback
- B. Group writeback
- C. Password writeback
- D. Directory extension attribute sync
- E. Azure AD app and attribute filtering

Answer: C

Explanation:

Reference:

<https://docs.microsoft.com/en-us/windows/security/identity-protection/hello-for-business/hello-hybrid-cert-trust-prereqs>

NEW QUESTION 82

DRAG DROP - (Topic 3)

You have two on-premises servers named Server1 and Server2 that run Windows Server.

You have an Azure Storage account named storage1 that contains a file share named share1. Server1 syncs with share1 by using Azure File Sync.

You need to configure Server2 to sync with share1.

Which three actions should you perform in sequence? To answer, move the appropriate actions from the list of actions to the answer area and arrange them in the correct order.

Actions

Register Server2 with the Storage Sync Service.

Add a Storage Sync Service to the Azure subscription.

On Server2, install the Azure File Sync agent.

Add a cloud endpoint to the sync group.

Add a server endpoint to the sync group.

Answer Area

- A. Mastered
- B. Not Mastered

Answer: A

Explanation:

Actions

Register Server2 with the Storage Sync Service.

Add a Storage Sync Service to the Azure subscription.

On Server2, install the Azure File Sync agent.

Add a cloud endpoint to the sync group.

Add a server endpoint to the sync group.

Answer Area

NEW QUESTION 86

- (Topic 3)

Note: This question is part of a series of questions that present the same scenario. Each question in the series contains a unique solution that might meet the stated goals. Some

question sets might have more than one correct solution, while others might not have a correct solution.

After you answer a question in this section, you will NOT be able to return to it. As a result, these questions will not appear in the review screen.

You are planning the deployment of DNS to a new network.

You have three internal DNS servers as shown in the following table.

Name	Location	IP address	Local DNS zone
Server1	Montreal	10.0.1.10	contoso.local
Server2	Toronto	10.0.2.10	east.contoso.local
Server3	Seattle	10.0.3.10	west.contoso.local

The contoso.local zone contains zone delegations for east.contoso.local and west.contoso.local. All the DNS servers use root hints.

You need to ensure that all the DNS servers can resolve the names of all the internal namespaces and internet hosts.

Solution: On Server2, you create a conditional forwarder for west.contoso.local. On Server3, you create a conditional forwarder for east.contoso.local.

Does this meet the goal?

- A. Yes
- B. No

Answer: B

NEW QUESTION 87

- (Topic 3)

Note: This question is part of a series of questions that present the same scenario. Each question in the series contains a unique

solution that might meet the stated goals. Some question sets might have more than one correct solution, while others might not have a correct solution. After you answer a question in this section, you will NOT be able to return to it. As a result, these questions will not appear in the review screen.

You are planning the deployment of DNS to a new network.

You have three internal DNS servers as shown in the following table.

Name	Location	IP address	Local DNS zone
Server1	Montreal	10.0.1.10	contoso.local
Server2	Toronto	10.0.2.10	east.contoso.local
Server3	Seattle	10.0.3.10	west.contoso.local

The contoso.local zone contains zone delegations for east.contoso.local and west.contoso.local. All the DNS servers use root hints.

You need to ensure that all the DNS servers can resolve the names of all the internal namespaces and internet hosts.

Solution: On Server2, you create a conditional forwarder for contoso.local and west.contoso.local. On Server3, you create a conditional forwarder for contoso.local and east.contoso.local.

Does this meet the goal?

- A. Yes
- B. No

Answer: B

NEW QUESTION 89

- (Topic 3)

Your network contains an Active Directory Domain Services (AD DS) domain. The domain contains the domain controllers shown in the following table.

Name	Description
DC1	PDC emulator, RID master, and global catalog server
DC2	Infrastructure master and domain naming master
DC3	Schema master
RODC1	Read-only domain controller (RODC)

You need to ensure that if an attacker compromises the computer account of RODC1, the attacker cannot view the Employee-Number AD DS attribute. Which partition should you modify?

- A. configuration
- B. global catalog
- C. domain
- D. schema

Answer: D

NEW QUESTION 92

- (Topic 3)

You have five file servers that run Windows Server.

You need to block users from uploading video files that have the .mov extension to shared folders on the file servers. All other types of files must be allowed. The solution must minimize administrative effort.

What should you create?

- A. a Dynamic Access Control central access policy
- B. a file screen
- C. a Dynamic Access Control central access rule
- D. a data loss prevention (DLP) policy

Answer: B

Explanation:

Reference:

<https://docs.microsoft.com/en-us/windows-server/storage/fsrm/file-screening-management>

NEW QUESTION 95

DRAG DROP - (Topic 3)

You have an on-premises server named Server 1 that runs Windows Server. Server 1 contains a file share named Share 1.

You have an Azure subscription. You perform the following actions:

- Deploy Azure File Sync
- Install the Azure File Sync agent on Server1.
- Register Server1 with Azure File Sync

You need to ensure that you can add Share1 as an Azure File Sync server endpoint. Which three actions should you perform in sequence? To answer, move the appropriate

actions from the list of actions to the answer area and arrange them in the correct order.

Actions

Deploy the Azure Connected Machine agent.

Deploy an Azure VPN gateway.

Create a private endpoint.

Create an Azure Storage account.

Create an Azure file share.

Create a sync group.

>

<

Answer Area

&u2191

&u2193

- A. Mastered
- B. Not Mastered

Answer: A

Explanation:

Actions

Deploy the Azure Connected Machine agent.

Deploy an Azure VPN gateway.

Create a private endpoint.

Create an Azure Storage account.

Create an Azure file share.

Create a sync group.

>

<

Answer Area

Create an Azure Storage account.

Create an Azure file share.

Create a sync group.

&u2191

&u2193

NEW QUESTION 100
HOTSPOT - (Topic 3)

You have on-premises servers that run Windows Server as shown in the following table.

Name	Local content
Server1	D:\Folder1\File1.docx
Server2	D:\Data1\File3.docx

You have an Azure file share named share1 that stores two files named File2.docx and File3.docx. You create an Azure File Sync sync group that includes the following endpoints:
? share
? D:\Folder1 on Server1
? D:\Data1 on Server2
For each of the following statements, select Yes if the statement is true. Otherwise, select No.
NOTE: Each correct selection is worth one point.

Statements

Yes

No

You can create a file named File2.docx in D:\Folder1 on Server1.

You can create a file named File1.docx in D:\Data1 on Server2.

File3.docx will sync to Server1.

- A. Mastered
- B. Not Mastered

Answer: A

Explanation:

Statements

Yes

No

You can create a file named File2.docx in D:\Folder1 on Server1.

You can create a file named File1.docx in D:\Data1 on Server2.

File3.docx will sync to Server1.

NEW QUESTION 105
HOTSPOT - (Topic 3)

You have an on-premises Active Directory Domain Services (AD DS) domain that syncs with an Azure Active Directory (Azure AD) tenant.
You have an on-premises web app named WebApp1 that only supports Kerberos authentication.
You need to ensure that users can access WebApp1 by using their Azure AD account. The solution must minimize administrative effort.
What should you configure? To answer, select the appropriate options in the answer area. NOTE: Each correct selection is worth one point.

Answer Area

In Azure AD:

The Azure AD Application Proxy connector

The Azure AD Application Proxy service

Web Application Proxy

On-premises:

The Azure AD Application Proxy connector

The Azure AD Application Proxy service

Web Application Proxy

- A. Mastered
- B. Not Mastered

Answer: A

Explanation:

Answer Area

In Azure AD:

The Azure AD Application Proxy connector

The Azure AD Application Proxy service

Web Application Proxy

On-premises:

The Azure AD Application Proxy connector

The Azure AD Application Proxy service

Web Application Proxy

NEW QUESTION 108
- (Topic 3)

You have a server named Server1 that runs Windows Server. Server1 has the storage pools shown in the following table.

Name	Number of 7,200-RPM HDDs	Number of 10,000-RPM HDDs	Number of SSDs
Pool1	4	4	None
Pool2	None	2	2
Pool3	8	None	4

You plan to create a virtual disk named VDisk1 that will use storage tiers. Which pools can you use to create VDisk1?

- A. Pool2 and Pool3 only
- B. Pool 2only
- C. Pool only
- D. Pool, Pool2, and Pool3
- E. Pool1 and Pool2 only
- F. Pool1 and Pool3 only
- G. Pool3 only

Answer: A

Explanation:

Storage tiering requires both standard HDDs and SSDs. We cannot use Pool1 because it does not have any SSDs.

NEW QUESTION 111
HOTSPOT - (Topic 3)

You have an Azure subscription named sub1 and 500 on-premises virtual machines that run Windows Server.
You plan to onboard the on-premises virtual machines to Azure Arc by running the Azure Arc deployment script.
You need to create an identity that mil be used by the script to authenticate access to sub1. The solution must use the principle of least privilege.
How should you complete the command? To answer, select the appropriate options in the answer area.
NOTE: Each correct selection is worth one point.

Answer Area

New-AzADAppCredential
New-AzADServicePrincipal
New-AzUserAssignedIdentity

-DisplayName 'Arc-for-servers' -Role

'Azure Connected Machine Onboarding'
'Virtual Machine Contributor'
'Virtual Machine User Login'

- A. Mastered
- B. Not Mastered

Answer: A

Explanation:

Answer Area



NEW QUESTION 115

- (Topic 3)

You have a server named Server1 that runs Windows Server and contains a file share named Share1. You need to prevent users from stoning MP4 files in Share1. The solution must ensure that the users can store other types of files in the share. What should you configure on Server1?

- A. File Management Tasks
- B. NTFS Quotas
- C. NTFS permissions
- D. file screens

Answer: D

NEW QUESTION 120

HOTSPOT - (Topic 3)

You have on-premises file servers that run Windows Server as shown in the following table.

Name	Relevant folder
Server1	D:\Folder1, E:\Folder2
Server2	D:\Data

You have the Azure file shares shown in the following table.

Name	Location
share1	East US
share2	East US

You add a Storage Sync Service named Sync1 and an Azure File Sync sync group named Group1. Group1 uses share1 as a cloud endpoint. You register Server1 and Server2 with Sync1. You add D:\Folder1 from Server1 as a server endpoint in Group1. For each of the following statements, select Yes if the statement is true. Otherwise, select No. NOTE: Each correct selection is worth one point.

Statements	Yes	No
You can add share2 as a cloud endpoint in Group1.	<input type="checkbox"/>	<input type="checkbox"/>
You can add E:\Folder2 from Server1 as a server endpoint in Group1.	<input type="checkbox"/>	<input type="checkbox"/>
You can add D:\Data from Server2 as a server endpoint in Group1.	<input type="checkbox"/>	<input type="checkbox"/>

- A. Mastered
- B. Not Mastered

Answer: A

Explanation:

Statements	Yes	No
You can add share2 as a cloud endpoint in Group1.	<input type="checkbox"/>	<input checked="" type="checkbox"/>
You can add E:\Folder2 from Server1 as a server endpoint in Group1.	<input checked="" type="checkbox"/>	<input type="checkbox"/>
You can add D:\Data from Server2 as a server endpoint in Group1.	<input checked="" type="checkbox"/>	<input type="checkbox"/>

NEW QUESTION 125

HOTSPOT - (Topic 3)

You have a Group Policy Object (GPO) named GPO1 that contains user settings only.

You plan to apply GPO1 to a global security group named Group1.

You link GP01 to the domain, and you remove all the permissions granted to the Authenticated Users group.

You need to configure permissions for GP01 to meet the following requirements.

- GPO1 must apply only to the users in Group 1.
- The solution must use the principle of least privilege

Answer Area

Group1:

▼

Apply group policy and Read

Apply group policy only

Read only

Domain Computers:

▼

Apply group policy and Read

Apply group policy only

Read only

- A. Mastered
- B. Not Mastered

Answer: A

Explanation:

Answer Area

Group1:

▼

Apply group policy and Read

Apply group policy only

Read only

Domain Computers:

▼

Apply group policy and Read

Apply group policy only

Read only

NEW QUESTION 126

HOTSPOT - (Topic 3)

Your network contains an Active Directory Domain Services (AD DS) domain named adatum.com.

Permissions for Share1

Share Permissions

Group or user names:

Domain Users (ADATUM\Domain Users)

Add...

Remove

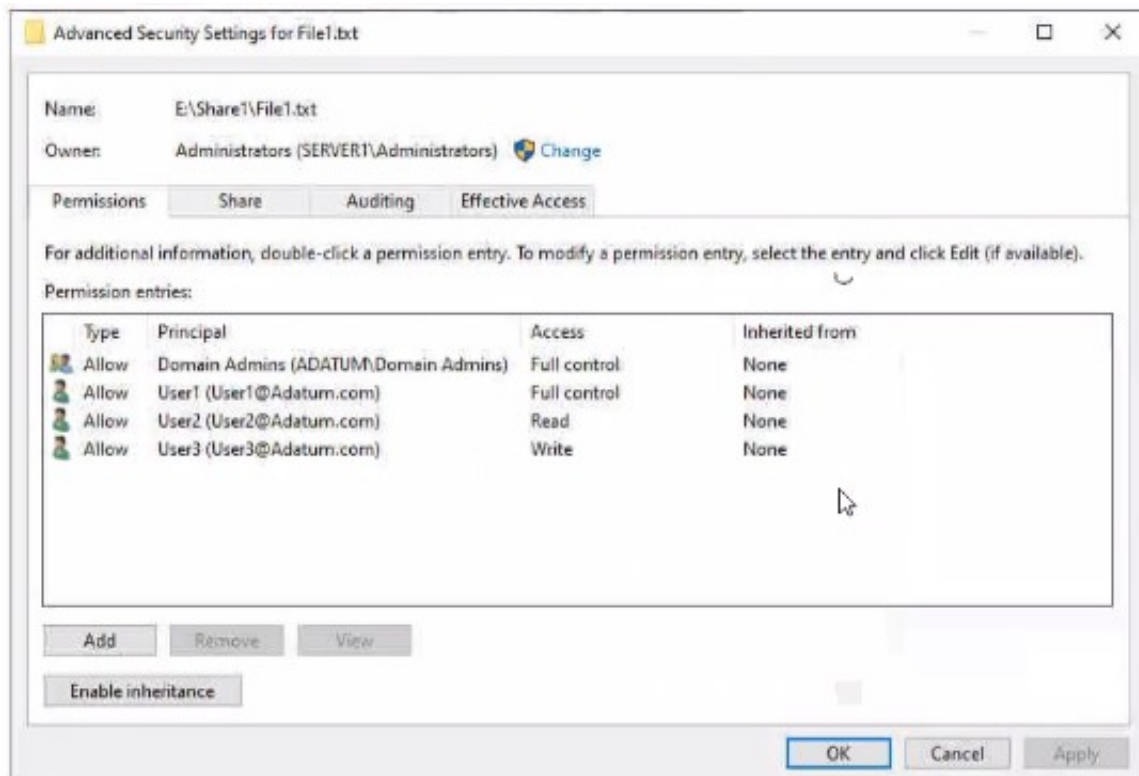
Permissions for Domain Users

	Allow	Deny
Full Control	<input type="checkbox"/>	<input type="checkbox"/>
Change	<input checked="" type="checkbox"/>	<input type="checkbox"/>
Read	<input checked="" type="checkbox"/>	<input type="checkbox"/>

OK

Cancel

Apply



The domain contains a 'He server named Server1 and three users named User1. User2 and User), Server1 contains a shared folder named Share1 tha1 has the following configurations:

```
ShareState      : Online
AvailabilityType : NonClustered
FolderEnumerationMode : AccessBased
CachingMode     : Manual
LeasingMode     : Full
SmbInstance     : Default
CompressData    : False
ContinuouslyAvailable : False
EncryptData     : False
Name            : Share1
Path            : E:\Share1
ShadowCopy     : False
```

The share permissions for Share1 are configured as shown in the Share Permissions exhibit. (Click the Share Permissions tab.)

Share! contains a file named File1.txt. The advanced security settings for File1.txt are configured as shown in the File Permissions exhibit. (Click the File Permissions tab.)

For each of the following statements, select Yes if the statement is true. Otherwise, select No.

NOTE: f ach correct selection is worth one point.

Answer Area	Statements	Yes	No
	When User1 connects to \\Server1.adatum.com\Share1\, the user can take ownership of File1.txt.	<input type="radio"/>	<input type="radio"/>
	When User2 connects to \\Server1.adatum.com\Share1\, File1.txt is visible.	<input type="radio"/>	<input type="radio"/>
	When User3 connects to \\Server1.adatum.com\Share1\, File1.txt is visible.	<input type="radio"/>	<input type="radio"/>

- A. Mastered
- B. Not Mastered

Answer: A

Explanation:

Answer Area	Statements	Yes	No
	When User1 connects to \\Server1.adatum.com\Share1\, the user can take ownership of File1.txt.	<input type="radio"/>	<input checked="" type="radio"/>
	When User2 connects to \\Server1.adatum.com\Share1\, File1.txt is visible.	<input checked="" type="radio"/>	<input type="radio"/>
	When User3 connects to \\Server1.adatum.com\Share1\, File1.txt is visible.	<input type="radio"/>	<input checked="" type="radio"/>

NEW QUESTION 129

- (Topic 3)

You have an on-premises Active Directory Domain Services (AD DS) domain that syncs with an Azure Active Directory (Azure AD) tenant. You plan deploy 100 new Azure virtual machines that will run Windows Server. You need to ensure that each new virtual machine is joined to the AD DS domain. What should you use?

- A. Azure AD Connect
- B. a Group Policy Object (GPO)
- C. an Azure Resource Manager (ARM) template
- D. an Azure management group

Answer: C

Explanation:

Reference:

<https://www.ludovicmedard.com/create-an-arm-template-of-a-virtual-machine-automatically-joined-to-a-domain/>

NEW QUESTION 132

HOTSPOT - (Topic 3)

You have an Azure subscription that contains the virtual machines shown in the following table.

Name	Operating system
VM1	Windows Server 2022 Datacenter: Azure Edition
VM2	Windows Server 2022 Datacenter: Azure Edition Core
VM3	Windows Server 2022 Datacenter
VM4	Windows Server 2019 Datacenter

You plan to implement Azure Automanage for Windows Server. You need to identify the operating system prerequisites. Which virtual machines support Hotpatch, and which virtual machines support SMB over QUIC? To answer select the appropriate options in the answer area. NOTE: Each correct selection is worth one point.

Answer Area

Hotpatch:

VM1 and VM2 only

VM1 only

VM2 only

VM1 and VM2 only

VM1, VM2, and VM3 only

VM1, VM2, VM3, and VM4

SMB over QUIC:

VM1 only

VM1 only

VM2 only

VM1 and VM2 only

VM1, VM2, and VM3 only

VM1, VM2, VM3, and VM4

- A. Mastered
B. Not Mastered

Answer: A

Explanation:

Answer Area

Hotpatch:

VM1 and VM2 only

VM1 only

VM2 only

VM1 and VM2 only

VM1, VM2, and VM3 only

VM1, VM2, VM3, and VM4

SMB over QUIC:

VM1 only

VM1 only

VM2 only

VM1 and VM2 only

VM1, VM2, and VM3 only

VM1, VM2, VM3, and VM4

NEW QUESTION 135

DRAG DROP - (Topic 3)

Your network contains an Active Directory domain, a web app named App1, and a perimeter network. The perimeter network contains a server named Server1 that runs Windows Server.

You plan to provide external access to App1.

You need to implement the Web Application Proxy role service on Server1.

Which role should you add to Server1, and which role should you add to the network? To answer, drag the appropriate roles to the correct targets. Each role may be used once, more than once, or not at all. You may need to drag the split bar between panes or scroll to view content.

Roles

Active Directory Certificate Services

Active Directory Federation Services

Network Policy and Access Services

Remote Access

Answer Area

Role on Server1:

Role on the network:

- A. Mastered
B. Not Mastered

Answer: A

Explanation:



NEW QUESTION 137

- (Topic 3)

You have an on-premises Active Directory Domain Services (AD DS) domain that syncs with an Azure Active Directory (Azure AD) tenant. The on-premises network is connected to Azure by using a Site-to-Site VPN. You have the DNS zones shown in the following table.

Name	Location	Description
contoso.com	A domain controller named DC1 on the on-premises network.	Provides name resolution on-premises.
fabrikam.com	An Azure private DNS zone.	Provides name resolution for all Azure virtual networks.

You need to ensure that names from fabrikam.com can be resolved from the on-premises network. Which two actions should you perform? Each correct answer presents part of the solution. NOTE: Each correct selection is worth one point.

- A. Create a conditional forwarder for fabrikam.com on DC1.
- B. Create a stub zone for fabrikam.com on DC1.
- C. Create a secondary zone for fabrikam.com on DC1.
- D. Deploy an Azure virtual machine that runs Windows Server.
- E. Modify the DNS Servers settings for the virtual network.
- F. Deploy an Azure virtual machine that runs Windows Server.
- G. Configure the virtual machine as a DNS forwarder.

Answer: AE

Explanation:

Reference:

<https://docs.microsoft.com/en-us/azure/private-link/private-endpoint-dns#on-premises-workloads-using-a-dns-forwarder>

NEW QUESTION 141

- (Topic 3)

You have an on-premises Active Directory Domain Services (AD DS) domain that syncs with an Azure Active Directory (Azure AD) tenant. The domain contains two servers named Server1 and Server2.

A user named Admin1 is a member of the local Administrators group on Server1 and Server2.

You plan to manage Server1 and Server2 by using Azure Arc. Azure Arc objects will be added to a resource group named RG1.

You need to ensure that Admin1 can configure Server1 and Server2 to be managed by using Azure Arc.

What should you do first?

- A. Mastered
- B. Not Mastered

Answer: A

Explanation:

Reference:

<https://docs.microsoft.com/en-us/azure/azure-arc/servers/onboard-service-principal>

NEW QUESTION 146

DRAG DROP - (Topic 3)

You deploy a new Active Directory Domain Services (AD DS) forest named contoso.com. The domain contains three domain controllers named DC1, DC2, and DC3.

You rename Default-First-Site-Name as Site1.

You plan to ship DC1, DC2, and DC3 to datacenters in different locations.

You need to configure replication between DC1, DC2, and DC3 to meet the following requirements:

- ? Each domain controller must reside in its own Active Directory site.
- ? The replication schedule between each site must be controlled independently.
- ? Interruptions to replication must be minimized.

Which three actions should you perform in sequence in the Active Directory Sites and Services console? To answer, move the appropriate actions from the list of actions to the answer area and arrange them in the correct order.

Actions

Create a connection object between DC1 and DC2.

Create an additional site link that contains Site1 and Site2.

Create two additional sites named Site2 and Site3. Move DC2 to Site2 and DC3 to Site3.

Create a connection object between DC2 and DC3.

Remove Site2 from DEFAULTIPSITELINK.



Answer Area

- A. Mastered
- B. Not Mastered

Answer: A

Explanation:

Actions

Create a connection object between DC1 and DC2.

Create an additional site link that contains Site1 and Site2.

Create two additional sites named Site2 and Site3. Move DC2 to Site2 and DC3 to Site3.

Create a connection object between DC2 and DC3.

Remove Site2 from DEFAULTIPSITELINK.



Answer Area

Create two additional sites named Site2 and Site3. Move DC2 to Site2 and DC3 to Site3.

Create a connection object between DC1 and DC2.

Create a connection object between DC2 and DC3.

NEW QUESTION 148

- (Topic 3)

Your network contains an Active Directory Domain Services (AD DS) domain. The domain contains the resources shown in the following table.

Name	Description
CLIENT1	Client computer that runs Windows
DC1	Domain controller
Server1	File server
Server2	File server

You plan to replicate a volume from Server1 to Server2 by using Storage Replica. You need to configure Storage Replica. Where should you install Windows Admin Center?

- A. Server 1
- B. CLIENT1
- C. DC1
- D. Server2

Answer: A

NEW QUESTION 153

- (Topic 3)

You have a server named Server1 that hosts Windows containers. You plan to deploy an application that will have multiple containers. Each container will be You need to create a Docker network that supports the deployment of the application. Which type of network should you create?

- A. transparent
- B. I2bridge
- C. NAT

D. I2tunnel

Answer: A

Explanation:

Reference:

<https://docs.microsoft.com/en-us/virtualization/windowscontainers/container-networking/network-drivers-topologies>

NEW QUESTION 155

- (Topic 3)

Your network contains an Active Directory Domain Services (AD DS) forest. The forest contains three Active Directory sites named Site1, Site2, and Site3. Each site contains two domain controllers. The sites are connected by using DEFAULTIPSITELINK.

You open a new branch office that contains only client computers.

You need to ensure that the client computers in the new office are primarily authenticated by the domain controllers in Site1.

Solution: You configure the Try Next Closest Site Group Policy Object (GPO) setting in a GPO that is linked to Site1.

Does this meet the goal?

A. Yes

B. No

Answer: B

NEW QUESTION 157

HOTSPOT - (Topic 3)

You have an Azure subscription that contains the storage accounts shown in the following table.

Name	Location	Kind	Container	File share
storage1	East US	StorageV2	cont1	share1
storage2	East US	BlockBlobStorage	cont2	<i>Not applicable</i>
storage3	East US	FileStorage	<i>Not applicable</i>	share3
storage4	Central US	StorageV2	cont4	share4

In the East US Azure region, you create a storage sync service named Synd. You need to create a sync group in Synd.

Which storage accounts can you use, and what can you specify as the cloud endpoints? To

answer, select the appropriate options in the answer area. NOTE: Each correct selection is worth one point.

Answer Area

Storage accounts:

Cloud endpoints:

A. Mastered

B. Not Mastered

Answer: A

Explanation:

Answer Area

Storage accounts:

Cloud endpoints:

NEW QUESTION 161

HOTSPOT - (Topic 3)

Your network contains two Active Directory Domain Services (AD DS) forests named contoso.com and fabrikam.com. A two-way forest trust exists between the forests. Each forest contains a single domain. The domains contain the servers shown in the following table.

Name	Domain	Description
Server1	contoso.com	Hosts a Windows Admin Center gateway
Server2	fabrikam.com	Hosts resources that will be managed remotely by using Windows Admin Center on Server1

You need to configure resources based constrained delegation so that the users in contoso.com can use Windows Admin Center on Server2 to connect to Server2. How should you complete the command? To answer, select the appropriate options in the answer area.

NOTE: Each correct selection is worth one point.

Answer Area

Set-ADComputer -Identity

(Get-ADComputer server1.contoso.com)

(Get-ADComputer server2.fabrikam.com)

(Get-ADGroup 'Contoso\Domain Users')

(Get-ADGroup 'Fabrikam\Domain Users')

-PrincipalsAllowedToDelegateToAccount

(Get-ADComputer server1.contoso.com)

(Get-ADComputer server2.fabrikam.com)

(Get-ADGroup 'Contoso\Domain Users')

(Get-ADGroup 'Fabrikam\Domain Users')

- A. Mastered
- B. Not Mastered

Answer: A

Explanation:

Answer Area

Set-ADComputer -Identity

(Get-ADComputer server1.contoso.com)

(Get-ADComputer server2.fabrikam.com)

(Get-ADGroup 'Contoso\Domain Users')

(Get-ADGroup 'Fabrikam\Domain Users')

-PrincipalsAllowedToDelegateToAccount

(Get-ADComputer server1.contoso.com)

(Get-ADComputer server2.fabrikam.com)

(Get-ADGroup 'Contoso\Domain Users')

(Get-ADGroup 'Fabrikam\Domain Users')

NEW QUESTION 163

- (Topic 3)

You have servers that have the DNS Server role installed. The servers are configured as shown in the following table.

Name	Office	Local DNS zone	IP address
Server1	Paris	contoso.com	10.1.1.1
Server2	New York	None	10.2.2.2

All the client computers in the New York office use Server2 as the DNS server. You need to configure name resolution in the New York office to meet the following requirements:

- ? Ensure that the client computers in New York can resolve names from contoso.com.
- ? Ensure that Server2 forwards all DNS queries for internet hosts to 131.107.100.200.

The solution must NOT require modifications to Server1. Each correct answer presents part of the solution. NOTE: Each correct selection is worth one point.

- A. a forwarder
- B. a conditional forwarder
- C. a delegation
- D. a secondary zone
- E. a reverse lookup zone

Answer: AB

Explanation:

A conditional forwarder is required for contoso.com. A forwarder is required for all other domains. When you have a conditional forwarder and a forwarder configured, the conditional forwarder will be used for the specified domain. You could use a secondary zone for contoso.com but that would require a configuration change on Server1.

NEW QUESTION 165

HOTSPOT - (Topic 2)

You need to configure Azure File Sync to meet the file sharing requirements. What should you do? To answer, select the appropriate options in the answer area. NOTE Each correct selection is worth one point.

Answer Area

Minimum number of sync groups to create:

1

2

3

4

Minimum number of Storage Sync Services to create:

1

2

3

4

- A. Mastered
- B. Not Mastered

Answer: A

Explanation:

Answer Area

Minimum number of sync groups to create:

1

2

3

4

Minimum number of Storage Sync Services to create:

1

2

3

4

NEW QUESTION 170

- (Topic 2)

You need to configure the Group Policy settings to ensure that the Azure Virtual Desktop session hosts meet the security requirements. What should you configure?

- A. security filtering for the link of GP04
- B. security filtering for the link of GPO1
- C. loopback processing in GPO4
- D. the Enforced property for the link of GP01
- E. loopback processing in GPO1
- F. the Enforced property for the link of GP04

Answer: C

NEW QUESTION 173

HOTSPOT - (Topic 2)

You need to configure network communication between the Seattle and New York offices. The solution must meet the networking requirements. What should you configure? To answer, select the appropriate options in the answer area. NOTE: Each correct selection is worth one point.

On a Virtual WAN hub:

An ExpressRoute gateway

A virtual network gateway

An ExpressRoute circuit connection

In the offices:

An ExpressRoute circuit connection

A Site to-Site VPN

An Azure application gateway

An on premises data gateway

- A. Mastered
- B. Not Mastered

Answer: A

Explanation:

On a Virtual WAN hub:

An ExpressRoute gateway
A virtual network gateway
An ExpressRoute circuit connection

In the offices:

An ExpressRoute circuit connection
A Site-to-Site VPN
An Azure application gateway
An on-premises data gateway

NEW QUESTION 176

- (Topic 2)
What should you implement for the deployment of DC3?

- A. Azure Active Directory Domain Services (Azure AD DS)
- B. Azure AD Application Proxy
- C. an Azure virtual machine
- D. an Azure AD administrative unit

Answer: C

Explanation:
Create a domain controller named dc3.corp.fabrikam.com in Vnet1.
In a hybrid network, you can configure Azure virtual machines as domain controllers. The domain controllers in Azure communicate with the on-premises domain controllers in the same way that on-premises domain controllers communicate with each other.

NEW QUESTION 178

- (Topic 2)
You need to configure remote administration to meet the security requirements. What should you use?

- A. just in time (JIT) VM access
- B. Azure AD Privileged Identity Management (PIM)
- C. the Remote Desktop extension for Azure Cloud Services
- D. an Azure Bastion host

Answer: A

Explanation:
Reference:
<https://docs.microsoft.com/en-us/azure/defender-for-cloud/just-in-time-access-usage?tabs=jit-config-asc%2Cjit-request-asc>

NEW QUESTION 179

- (Topic 1)
You need to meet the technical requirements for VM2. What should you do?

- A. Implement shielded virtual machines.
- B. Enable the Guest services integration service.
- C. Implement Credential Guard.
- D. Enable enhanced session mode.

Answer: D

NEW QUESTION 180

HOTSPOT - (Topic 1)
For each of the following statements, select Yes if the statement is true. Otherwise, select No.
NOTE: Each correct selection is worth one point.

Answer Area		
Statements	Yes	No
Admin1 must use a password that has at least 14 characters.	<input type="radio"/>	<input type="radio"/>
User1 must use a password that has at least 10 characters.	<input type="radio"/>	<input type="radio"/>
If Admin1 creates a new local user on Server1, the password for the new user must be at least eight characters.	<input type="radio"/>	<input type="radio"/>

- A. Mastered
B. Not Mastered

Answer: A

Explanation:

Answer Area

Statements	Yes	No
Admin1 must use a password that has at least 14 characters.	<input type="radio"/>	<input checked="" type="radio"/>
User1 must use a password that has at least 10 characters.	<input checked="" type="radio"/>	<input type="radio"/>
If Admin1 creates a new local user on Server1, the password for the new user must be at least eight characters.	<input type="radio"/>	<input checked="" type="radio"/>

NEW QUESTION 185

HOTSPOT - (Topic 1)

You need to meet the technical requirements for VM1.

Which cmdlet should you run first? To answer, select the appropriate options in the answer area.

NOTE: Each correct selection is worth one point.

Answer Area

Set-VM

Set-VMBios

Set-VMHost

Set-VMFirmware

Set-VMProcessor

VM1

-NewVMName

-GuestControlledCacheTypes

-EnableHostResourceProtection

-ExposeVirtualizationExtensions

\$true

- A. Mastered
B. Not Mastered

Answer: A

Explanation:

Graphical user interface, text, application Description automatically generated

NEW QUESTION 186

- (Topic 1)

You need to meet the technical requirements for VM3 On which volumes can you enable Data Deduplication?

- A. D and E only
B. C, D, E, and F
C. D only
D. C and D only
E. D, E, and F only

Answer: A

Explanation:

Reference:

<https://docs.microsoft.com/en-us/windows-server/storage/data-deduplication/interop>

NEW QUESTION 190

- (Topic 1)

You need to meet the technical requirements for the site links. Which users can perform the required tasks?

- A. Admin1 only
B. Admin1 and Admin3 only
C. Admin1 and Admin2 only
D. Admin3 only
E. Admin1, Adrrun2. and Admin3

Answer: C

Explanation:

Membership in the Enterprise Admins group or the Domain Admins group in the forest root domain is required.

NEW QUESTION 192

.....

Relate Links

100% Pass Your AZ-800 Exam with ExamBible Prep Materials

<https://www.exambible.com/AZ-800-exam/>

Contact us

We are proud of our high-quality customer service, which serves you around the clock 24/7.

Viste - <https://www.exambible.com/>