

PMI

Exam Questions CAPM

Certified Associate in Project Management (PMI-100)



NEW QUESTION 1

- (Exam Topic 3)

Which of the following techniques is used during Control Scope?

- A. Cost-benefit analysis
- B. Variance analysis
- C. Reserve analysis
- D. Stakeholder analysis

Answer: B

NEW QUESTION 2

- (Exam Topic 3)

Change requests are an output from which Project Integration Management process?

- A. Direct and Manage Project Execution
- B. Develop Project Management Plan
- C. Close Project
- D. Develop Project Charter

Answer: A

NEW QUESTION 3

- (Exam Topic 3)

Which type of analysis would be used for the Plan Quality process?

- A. Schedule
- B. Checklist
- C. Assumption
- D. Cost-Benefit

Answer: D

NEW QUESTION 4

- (Exam Topic 3)

When does Monitor and Control Risks occur?

- A. At project initiation
- B. During work performance analysis
- C. Throughout the life of the project
- D. At project milestones

Answer: C

NEW QUESTION 5

- (Exam Topic 3)

An input required in Define Scope is an organizational:

- A. structure.
- B. process asset.
- C. matrix.
- D. breakdown structure.

Answer: B

NEW QUESTION 6

- (Exam Topic 3)

Which of the following involves making information available to project stakeholders in a timely manner?

- A. Plan Communications
- B. Performance reporting
- C. Project status reports
- D. Distribute Information

Answer: D

NEW QUESTION 7

- (Exam Topic 3)

Which is an example of Administer Procurements?

- A. Negotiating the contract
- B. Authorizing contractor work
- C. Developing the statement of work
- D. Establishing evaluation criteria

Answer: B

NEW QUESTION 8

- (Exam Topic 3)

Project or phase closure guidelines or requirements, historical information, and the lessons learned knowledge base are examples of which input to the Close Project or Phase process?

- A. Organizational process assets
- B. A work breakdown structure
- C. The project management plan
- D. Enterprise environmental factors

Answer: A

NEW QUESTION 9

- (Exam Topic 3)

Which of the following is an output of the Define Activities process?

- A. Activity list
- B. Project plan
- C. Activity duration estimates
- D. Project schedule

Answer: A

NEW QUESTION 10

- (Exam Topic 3)

Which of the following is TRUE about most project life cycles?

- A. Staffing level is highest at the start.
- B. The stakeholders' influence is highest at the start.
- C. The level of uncertainty is lowest at the start.
- D. The cost of changes is highest at the start.

Answer: B

NEW QUESTION 10

- (Exam Topic 3)

Which document includes the project scope, major deliverables, assumptions, and constraints?

- A. Project charter
- B. Project scope statement
- C. Scope management plan
- D. Project document updates

Answer: B

NEW QUESTION 14

- (Exam Topic 3)

Which Process Group typically consumes the bulk of a project's budget?

- A. Monitoring and Controlling
- B. Executing
- C. Planning
- D. Initiating

Answer: B

NEW QUESTION 19

- (Exam Topic 3)

The scope management plan is a subsidiary of which project document?

- A. Schedule management plan
- B. Project management plan
- C. Quality management plan
- D. Resource management plan

Answer: B

NEW QUESTION 21

- (Exam Topic 3)

The approaches, tools, and data sources that will be used to perform risk management on a project are determined by the:

- A. Methodology
- B. Risk category

- C. Risk attitude
- D. Assumption analysis

Answer: A

NEW QUESTION 26

- (Exam Topic 3)

Which technique is used in Perform Quantitative Risk Analysis?

- A. Sensitivity analysis
- B. Probability and impact matrix
- C. Risk data quality assessment
- D. Risk categorization

Answer: A

NEW QUESTION 30

- (Exam Topic 3)

What is the function of a Project Management Office (PMO)?

- A. To focus on the coordinated planning, prioritization, and execution of projects and subprojects that are tied to the parent organizations or the client's overall business objectives.
- B. To coordinate and manage the procurement of projects relevant to the parent organization's business objectives and to administer the project charters accordingly.
- C. To administer performance reviews for the project manager and the project team members and to handle any personnel and payroll issues.
- D. To focus on the specified project objectives and to manage the scope, schedule, cost, and quality of the work packages.

Answer: A

NEW QUESTION 35

- (Exam Topic 3)

What name(s) is (are) associated with the Plan-Do-Check-Act cycle?

- A. Pareto
- B. Ishikawa
- C. Shewhart-Deming
- D. Delphi

Answer: C

NEW QUESTION 37

- (Exam Topic 3)

The product scope description is used to:

- A. Gain stakeholders' support for the project.
- B. Progressively elaborate the characteristics of the product, service, or result.
- C. Describe the project in great detail.
- D. Define the process and criteria for accepting a completed product, service, or result.

Answer: B

NEW QUESTION 38

- (Exam Topic 3)

Which process is included in the Project Integration Management Knowledge Area?

- A. Manage Project Team
- B. Collect Requirements
- C. Sequence Activities
- D. Direct and Manage Project Work

Answer: D

NEW QUESTION 39

- (Exam Topic 3)

Most experienced project managers know that:

- A. every project requires the use of all processes in the PMBOK® Guide.
- B. there is no single way to manage a project.
- C. project management techniques are risk free.
- D. there is only one way to manage projects successfully.

Answer: B

NEW QUESTION 40

- (Exam Topic 3)

The project manager notes that stakeholders are aware of the project and potential impacts and are actively engaged in ensuring that the project is a success. The engagement level of the stakeholders should be classified as:

- A. Supportive
- B. Leading
- C. Neutral
- D. Resistant

Answer: B

NEW QUESTION 43

- (Exam Topic 3)

Cost baseline is an output of which of the following processes?

- A. Control Costs
- B. Determine Budget
- C. Estimate Costs
- D. Estimate Activity Resources

Answer: B

NEW QUESTION 44

- (Exam Topic 3)

What is a hierarchically organized depiction of the identified project risks arranged by risk category?

- A. Risk register
- B. Risk breakdown structure (RBS)
- C. Risk management plan
- D. Risk category

Answer: B

NEW QUESTION 47

- (Exam Topic 3)

Which of the following statements correctly characterizes pull communication?

- A. It includes letters, memos, reports, emails, and faxes.
- B. It requires recipients to access communication content at their own discretion.
- C. It is the most efficient way to ensure a common understanding among all participants.
- D. It is primarily used when the volume of information to be transferred is minimal.

Answer: B

NEW QUESTION 50

- (Exam Topic 3)

What are the formal and informal policies, procedures, and guidelines that could impact how the project's scope is managed?

- A. Organizational process assets
- B. Enterprise environmental factors
- C. Project management processes
- D. Project scope management plan

Answer: A

NEW QUESTION 53

- (Exam Topic 3)

As part of a mid-project evaluation, the project sponsor has asked for a forecast of the total project cost. What should be used to calculate the forecast?

- A. BAC
- B. EAC
- C. ETC
- D. WBS

Answer: B

NEW QUESTION 58

- (Exam Topic 3)

Taking out insurance in relation to risk management is called what?

- A. Transference
- B. Avoidance
- C. Exploring
- D. Mitigation

Answer: A

NEW QUESTION 63

- (Exam Topic 3)

Projects are undertaken by an organization to support the:

- A. Product performance.
- B. Budget process.
- C. Collective capabilities.
- D. Organizational strategy.

Answer: D

NEW QUESTION 66

- (Exam Topic 3)

Which process involves aggregating the estimated costs of the individual schedule activities or work packages?

- A. Estimate Costs
- B. Estimate Activity Resources
- C. Control Costs
- D. Determine Budget

Answer: D

NEW QUESTION 68

- (Exam Topic 3)

Which is one of the major outputs of Sequence Activities?

- A. Responsibility assignment matrix (RAM)
- B. Work breakdown structure (WBS) update
- C. Project schedule network diagram
- D. Mandatory dependencies list

Answer: C

NEW QUESTION 70

- (Exam Topic 3)

The Human Resource Management processes are:

- A. Develop Human Resource Plan, Acquire Project Team, Develop Project Team, and Manage Project Team.
- B. Acquire Project Team, Manage Project Team, Manage Stakeholder Expectations, and Develop Project Team.
- C. Acquire Project Team, Develop Human Resource Plan, Conflict Management, and Manage Project Team.
- D. Develop Project Team, Manage Project Team, Estimate Activity Resources, and Acquire Project Team.

Answer: A

NEW QUESTION 74

- (Exam Topic 3)

Which Develop Schedule tool and technique produces a theoretical early start date and late start date?

- A. Critical path method
- B. Variance analysis
- C. Schedule compression
- D. Schedule comparison bar charts

Answer: A

NEW QUESTION 76

- (Exam Topic 3)

An input of the Control Schedule process is the:

- A. resource calendar.
- B. activity list.
- C. risk management plan.
- D. organizational process assets.

Answer: D

NEW QUESTION 79

- (Exam Topic 3)

What type of project structure is a hierarchically organized depiction of the resources by type?

- A. Organizational breakdown structure (OBS)
- B. Resource breakdown structure (RBS)
- C. Work breakdown structure (WBS)
- D. Project breakdown structure (PBS)

Answer: B

NEW QUESTION 81

- (Exam Topic 3)

Which tool is used to develop technical details within the project management plan?

- A. Expert judgment
- B. Project management methodology
- C. Project management information system (PMIS)
- D. Project selection methods

Answer: A

NEW QUESTION 82

- (Exam Topic 3)

Assigned risk ratings are based upon:

- A. Root cause analysis.
- B. Risk probability and impact assessment.
- C. Expert judgment.
- D. Revised stakeholders' tolerances.

Answer: B

NEW QUESTION 85

- (Exam Topic 3)

The stakeholder register is an output of:

- A. Identify Stakeholders.
- B. Plan Stakeholder Management.
- C. Control Stakeholder Engagement.
- D. Manage Stakeholder Engagement.

Answer: A

NEW QUESTION 87

- (Exam Topic 3)

Which of the following is a tool and technique for Estimate Activity Durations?

- A. Parametric estimating
- B. Monte Carlo analysis
- C. Alternatives analysis
- D. Bottom-up estimating

Answer: A

NEW QUESTION 92

- (Exam Topic 3)

Outputs of the Control Communications process include:

- A. expert judgment and change requests
- B. work performance information and change requests
- C. project management plan updates and work performance information
- D. issue logs and organizational process assets updates

Answer: B

NEW QUESTION 96

- (Exam Topic 3)

Which of the following investigates the likelihood that each specific risk will occur?

- A. Risk register
- B. Risk audits
- C. Risk urgency assessment
- D. Risk probability and impact assessment

Answer: D

NEW QUESTION 97

- (Exam Topic 3)

Which is a tool or technique used in Define Scope?

- A. Templates, forms, and standards
- B. Change requests
- C. Product analysis
- D. Project assumptions

Answer:

C

NEW QUESTION 100

- (Exam Topic 3)

The creation of an internet site to engage stakeholders on a project is an example of which type of communication?

- A. Push
- B. Pull
- C. Interactive
- D. Iterative

Answer: B

NEW QUESTION 103

- (Exam Topic 3)

To which process is work performance information an input?

- A. Administer Procurements
- B. Direct and Manage Project Execution
- C. Create WBS
- D. Perform Qualitative Risk Analysis

Answer: A

NEW QUESTION 107

- (Exam Topic 3)

Who, along with the project manager, is supposed to direct the performance of the planned project activities and manage the various technical and organizational interfaces that exist within the project?

- A. The customer and functional managers
- B. The risk owners and stakeholders
- C. The sponsors and stakeholders
- D. The project management team

Answer: D

NEW QUESTION 108

- (Exam Topic 3)

What is the name of a graphic display of project team members and their reporting relationships?

- A. Role dependencies chart
- B. Reporting flow diagram
- C. Project organization chart
- D. Project team structure diagram

Answer: C

NEW QUESTION 109

- (Exam Topic 3)

Which activity is an input to the Conduct Procurements process?

- A. Organizational process assets
- B. Resource availability
- C. Perform Integrated Change Control
- D. Team performance assessment

Answer: A

NEW QUESTION 113

- (Exam Topic 3)

A project manager seeking insight on previous stakeholder management plans and their effectiveness should evaluate:

- A. Historical information and the lessons-learned database.
- B. Historical information and the stakeholder register.
- C. Organizational process assets and the lessons-learned database.
- D. Project documents and historical information.

Answer: A

NEW QUESTION 114

- (Exam Topic 3)

Which of the following risk response strategies involves allocating ownership of a positive risk to a third party?

- A. Mitigate
- B. Transfer
- C. Share

D. Avoid

Answer: C

NEW QUESTION 117

- (Exam Topic 3)

The formal and informal interaction with others in an organization industry, or professional environment is known as:

- A. negotiation
- B. organizational theory
- C. meeting
- D. networking

Answer: D

NEW QUESTION 118

- (Exam Topic 3)

What type of planning is used where the work to be accomplished in the near term is planned in detail, while work in the future is planned at a higher level?

- A. Finish-to-start planning
- B. Rolling wave planning
- C. Short term planning
- D. Dependency determination

Answer: B

NEW QUESTION 121

- (Exam Topic 3)

The procurement process that documents agreements and related documentation for future reference is known as:

- A. Plan Procurements.
- B. Control Procurements.
- C. Close Procurements.
- D. Conduct Procurements.

Answer: C

NEW QUESTION 123

- (Exam Topic 3)

Information collected on the status of project activities being performed to accomplish the project work is known as what?

- A. Project management information system
- B. Work performance information
- C. Work breakdown structure
- D. Variance analysis

Answer: B

NEW QUESTION 128

- (Exam Topic 2)

An example of a group decision-making technique is:

- A. nominal group technique
- B. majority
- C. affinity diagram
- D. multi-criteria decision analysis

Answer: B

NEW QUESTION 132

- (Exam Topic 2)

An input to the Control Quality process is:

- A. Activity attributes
- B. Quality control measurements
- C. Enterprise environmental factors
- D. Deliverables

Answer: D

NEW QUESTION 134

- (Exam Topic 2)

A stakeholder expresses a need not known to the project manager. The project manager most likely missed a step in which stakeholder management process?

- A. Plan Stakeholder Management

- B. Identify Stakeholders
- C. Manage Stakeholder Engagement
- D. Control Stakeholder Engagement

Answer: A

NEW QUESTION 136

- (Exam Topic 2)

Retreating from an actual or potential conflict or postponing the issue to be better prepared or to be resolved by others describes which of the five general techniques for managing conflict?

- A. Smooth/accommodate
- B. Withdraw/avoid
- C. Compromise/reconcile
- D. Force/direct

Answer: B

NEW QUESTION 141

- (Exam Topic 2)

Which Control Stakeholder Engagement tool or technique allows the project manager to consolidate and facilitate distribution of reports?

- A. Information management systems
- B. Work performance reports
- C. Stakeholder analysis
- D. Data gathering and representation

Answer: A

NEW QUESTION 142

- (Exam Topic 2)

Which key interpersonal skill of a project manager is defined as the strategy of sharing power and relying on interpersonal skills to convince others to cooperate toward common goals?

- A. Collaboration
- B. Negotiation
- C. Decision making
- D. Influencing

Answer: D

NEW QUESTION 147

- (Exam Topic 2)

The degree, amount, or volume of risk that an organization or individual will withstand is known as its risk:

- A. Analysis
- B. Appetite
- C. Tolerance
- D. Response

Answer: C

NEW QUESTION 150

- (Exam Topic 2)

A project requires a component with well-understood specifications. Performance targets are established at the outset, and the final contract price is determined after completion of all work based on the seller's performance. The most appropriate agreement with the supplier is:

- A. Cost Plus Incentive Fee (CPIF).
- B. Fixed Price Incentive Fee (FPIF).
- C. Cost Plus Award Fee (CPAF).
- D. Fixed Price with Economic Price Adjustment (FP-EPA).

Answer: B

NEW QUESTION 155

- (Exam Topic 2)

During which process does the project team receive bids and proposals?

- A. Conduct Procurements
- B. Plan Procurements
- C. Estimate Costs
- D. Control Budget

Answer: A

NEW QUESTION 157

- (Exam Topic 2)

Project Scope Management is primarily concerned with:

- A. Developing a detailed description of the project and product.
- B. Determining how requirements will be analyzed, documented, and managed.
- C. Defining and controlling what is and is not included in the project.
- D. Formalizing acceptance of the completed project deliverables.

Answer: C

NEW QUESTION 160

- (Exam Topic 2)

Funding limit reconciliation is a tool and technique of which Project Cost Management process?

- A. Estimate Costs
- B. Control Costs
- C. Plan Cost Management
- D. Determine Budget

Answer: D

NEW QUESTION 164

- (Exam Topic 2)

Which Manage Communications tool or technique focuses on identifying and managing barriers?

- A. Communication methods
- B. Information technology
- C. Communication models
- D. Information management systems

Answer: C

NEW QUESTION 169

- (Exam Topic 2)

Which action is included in the Control Costs process?

- A. Identify how the project costs will be planned, structured, and controlled
- B. Determine policies, objectives, and responsibilities to satisfy stakeholder needs
- C. Develop an approximation of the monetary resources needed to complete project activities
- D. Monitor cost performance to isolate and understand variances from the approved cost baseline

Answer: D

NEW QUESTION 170

- (Exam Topic 2)

Technical capability, past performance, and intellectual property rights are examples of:

- A. performance measurement criteria
- B. source selection criteria
- C. product acceptance criteria
- D. phase exit criteria

Answer: B

NEW QUESTION 171

- (Exam Topic 2)

An element of the modern quality management approach used to achieve compatibility with the International Organization for Standardization (ISO) is known as:

- A. Forecasting,
- B. Brainstorming.
- C. Historical databases.
- D. Cost of quality.

Answer: D

NEW QUESTION 172

- (Exam Topic 2)

An output of the Perform Integrated Change Control process is:

- A. Deliverables.
- B. Validated changes.
- C. The change log.
- D. The requirements traceability matrix.

Answer: C

NEW QUESTION 174

- (Exam Topic 2)

Which items are components of a project management plan?

- A. Change management plan, process improvement plan, and scope management plan
- B. Agreements, procurement management plan, and work performance information
- C. Schedule management plan, project schedule, and resource calendars
- D. Scope baseline, project statement of work, and requirements traceability matrix

Answer: A

NEW QUESTION 178

- (Exam Topic 2)

In project management, a temporary project can be:

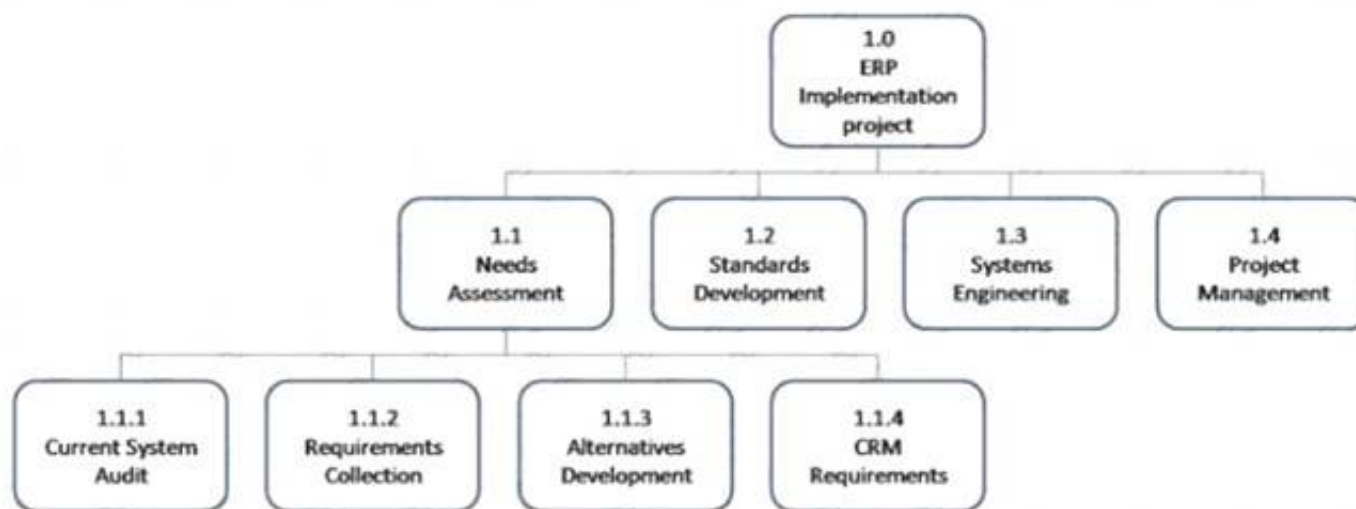
- A. Completed without planning
- B. A routine business process
- C. Long in duration
- D. Ongoing to produce goods

Answer: C

NEW QUESTION 182

- (Exam Topic 2)

Which type of graphic is displayed below?



- A. Work breakdown structure
- B. Context diagram
- C. Control chart
- D. Pareto diagram

Answer: A

NEW QUESTION 183

- (Exam Topic 2)

Which Project Time Management process includes bottom-up estimating as a tool or technique?

- A. Estimate Activity Resources
- B. Sequence Activities
- C. Estimate Activity Durations
- D. Develop Schedule

Answer: A

NEW QUESTION 185

- (Exam Topic 2)

Which Process Group includes the Manage Stakeholder Engagement process?

- A. Executing
- B. Planning
- C. Monitoring and Controlling
- D. Initiating

Answer: A

NEW QUESTION 186

- (Exam Topic 2)

Which quality tool may prove useful in understanding and estimating the cost of quality in a process?

- A. Checksheets
- B. Histograms

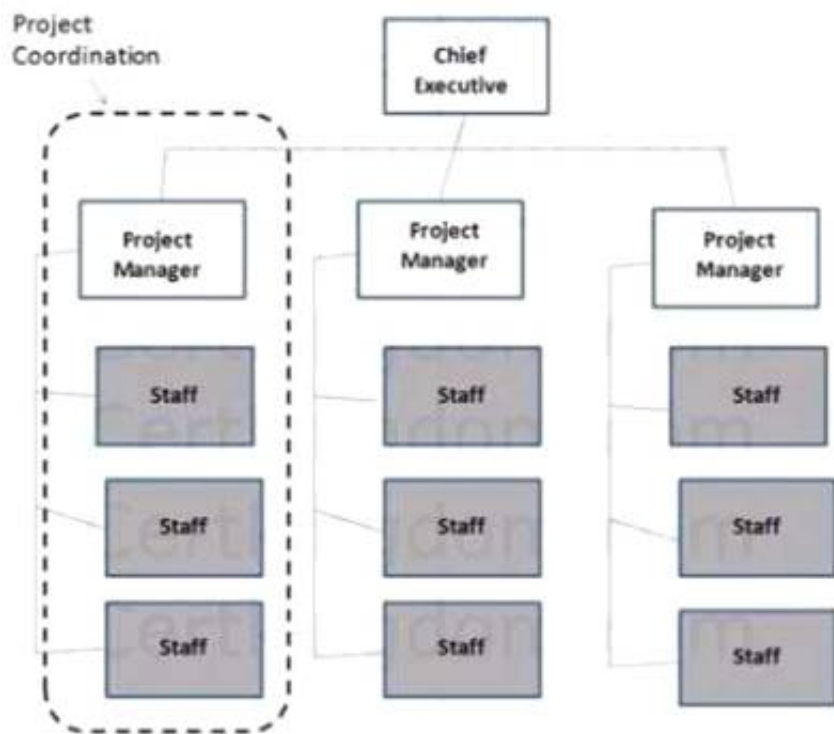
- C. Flowcharts
- D. Control charts

Answer: C

NEW QUESTION 191

- (Exam Topic 2)

Which type of organizational structure is displayed in the diagram provided?



- A. Balanced matrix
- B. Projectized
- C. Strong matrix
- D. Functional

Answer: B

NEW QUESTION 196

- (Exam Topic 2)

The risk response strategy in which the project team acts to reduce the probability of occurrence or impact of a risk is known as:

- A. exploit
- B. avoid
- C. mitigate
- D. share

Answer: C

NEW QUESTION 201

- (Exam Topic 2)

Whose approval may be required for change requests after change control board (CCB) approval?

- A. Functional managers
- B. Business partners
- C. Customers or sponsors
- D. Subject matter experts

Answer: C

NEW QUESTION 203

- (Exam Topic 2)

The following chart contains information about the tasks in a project.

Task	PV	AC	EV
1	10,000	10,000	10,000
2	10,000	8,000	10,000
3	10,000	8,000	8,000
4	9,000	12,000	10,000
5	10,000	12,000	12,000
6	10,000	10,000	12,000
7	12,000	12,000	10,000
8	10,000	8,000	9,000
9	12,000	10,000	11,000

Based on the chart, what is the schedule variance (SV) for Task 8?

A. A.--2,000B.-1,000C.1,000D.2,000

Answer: B

NEW QUESTION 206

- (Exam Topic 2)

The purpose of developing a project scope management plan is to:

- A. Manage the timely completion of the project.
- B. Ensure that the project includes all of the work required.
- C. Make sure the project will satisfy the needs for which it was begun.
- D. Reduce the risk of negative events in the project.

Answer: B

NEW QUESTION 208

- (Exam Topic 2)

Power, urgency, and legitimacy are attributes of which stakeholder classification model?

- A. Salience
- B. Influence/impact
- C. Power/interest
- D. Power/influence

Answer: A

NEW QUESTION 209

- (Exam Topic 2)

Which of the Perform Quality Assurance tools and techniques may enhance the creation of the work breakdown structure (VVBS) to give structure to the decomposition of the scope?

- A. Activity network diagrams
- B. Affinity diagrams
- C. Matrix diagrams
- D. Interrelationship digraphs

Answer: B

NEW QUESTION 214

- (Exam Topic 2)

Every project creates a unique product, service, or result that may be:

- A. tangible
- B. targeted
- C. organized
- D. variable

Answer: A

NEW QUESTION 217

- (Exam Topic 2)

Through whom do project managers accomplish work?

- A. Consultants and stakeholders
- B. Stakeholders and functional managers

- C. Project team members and consultants
- D. Project team members and stakeholders

Answer: D

NEW QUESTION 222

- (Exam Topic 2)

The component of the risk management plan that documents how risk activities will be recorded is called:

- A. tracking
- B. scoping
- C. timing
- D. defining

Answer: A

NEW QUESTION 225

- (Exam Topic 2)

The methodology that combines scope, schedule, and resource measurements to assess project performance and progress is known as:

- A. Earned value management.
- B. Forecasting.
- C. Critical chain methodology.
- D. Critical path methodology.

Answer: A

NEW QUESTION 228

- (Exam Topic 2)

Project Stakeholder Management focuses on:

- A. project staff assignments
- B. project team acquisition
- C. managing conflicting interests
- D. communication methods

Answer: C

NEW QUESTION 229

- (Exam Topic 2)

When painting a bedroom, preparing the walls can be done while the paint is being chosen. This is an example of a:

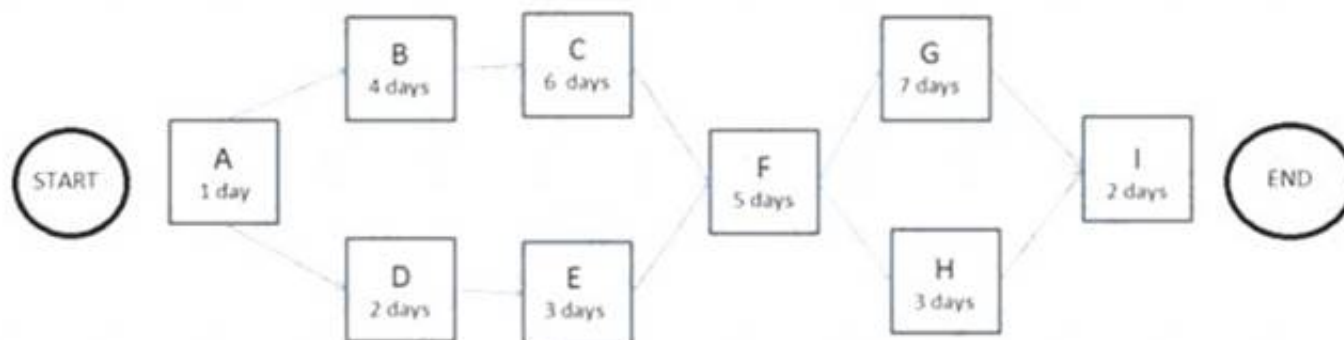
- A. lead
- B. lag
- C. mandatory dependency
- D. internal dependency

Answer: A

NEW QUESTION 232

- (Exam Topic 2)

The following is a network diagram for a project.



The free float for Activity E is how many days?

- A. 2
- B. 3
- C. 5
- D. 8

Answer: C

NEW QUESTION 237

- (Exam Topic 2)

What is the risk rating if the probability of occurrence is 0.30 and the impact if it does occur is moderate (0.20)?

- A. 0.03

- B. 0.06
- C. 0.10
- D. 0.50

Answer: B

NEW QUESTION 239

- (Exam Topic 2)

Success is measured by benefits realization for a:

- A. strategic plan
- B. project
- C. portfolio
- D. program

Answer: C

NEW QUESTION 244

- (Exam Topic 2)

Which element does a project charter contain?

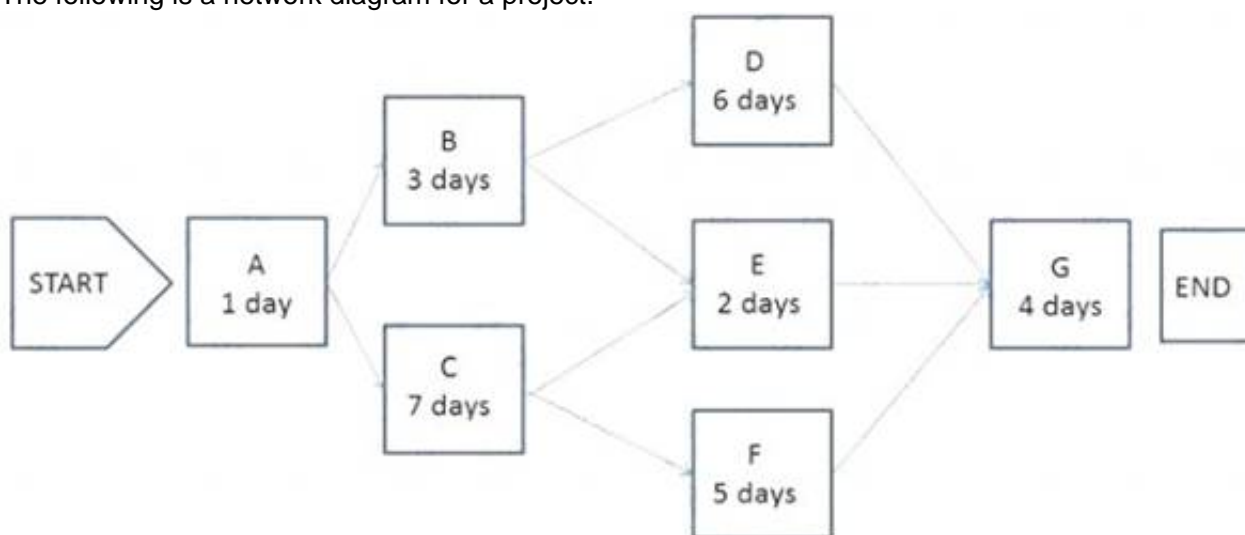
- A. Management reserves
- B. Work breakdown structure
- C. Stakeholder list
- D. Stakeholder register

Answer: C

NEW QUESTION 245

- (Exam Topic 2)

The following is a network diagram for a project.



What is the critical path for the project?

- A. A-B-D-G
- B. A-B-E-G
- C. A-C-F-G
- D. A-C-E-G

Answer: C

NEW QUESTION 247

- (Exam Topic 2)

A risk that arises as a direct result of implementing a risk response is called a:

- A. contingent risk
- B. residual risk
- C. potential risk
- D. secondary risk

Answer: D

NEW QUESTION 249

- (Exam Topic 2)

Stakeholders can be identified in later stages of the project because the Identify Stakeholders process should be:

- A. Continuous
- B. Discrete
- C. Regulated
- D. Arbitrary

Answer: A

NEW QUESTION 252

- (Exam Topic 2)

Specification of both the deliverables and the processes is the focus of:

- A. Change control
- B. Configuration control
- C. Project monitoring and control
- D. Issue control

Answer: B

NEW QUESTION 255

- (Exam Topic 2)

Correlated and contextualized information on how closely the scope is being maintained relative to the scope baseline is contained within:

- A. project documents updates.
- B. project management plan updates.
- C. change requests.
- D. work performance information.

Answer: D

NEW QUESTION 260

- (Exam Topic 2)

Plan Communications Management develops an approach and plan for project communications based on stakeholders' needs and requirements and:

- A. Available organizational assets
- B. Project staff assignments
- C. Interpersonal skills
- D. Enterprise environmental factors

Answer: A

NEW QUESTION 265

- (Exam Topic 2)

Which schedule method allows the project team to place buffers on the project schedule path to account for limited resources and project uncertainties?

- A. Critical path method
- B. Critical chain method
- C. Resource leveling
- D. Schedule network analysis

Answer: B

NEW QUESTION 270

- (Exam Topic 2)

A tool and technique used in the Develop Project Charter process is:

- A. change control tools
- B. expert judgment
- C. meetings
- D. analytical techniques

Answer: B

NEW QUESTION 274

- (Exam Topic 2)

Processes in the Initiating Process Group may be completed at the organizational level and be outside of the project's:

- A. Level of control.
- B. Communication channels.
- C. Scope.
- D. Strategic alignment.

Answer: A

NEW QUESTION 279

- (Exam Topic 2)

Project deliverables that have been completed and checked for correctness through the Control Quality process are known as:

- A. Verified deliverables.
- B. Validated deliverables.
- C. Acceptance criteria.
- D. Activity resource requirements.

Answer: A

NEW QUESTION 280

- (Exam Topic 2)

The lowest level normally depicted in a work breakdown structure (WBS) is called a/an:

- A. work package
- B. deliverable
- C. milestone
- D. activity

Answer: A

NEW QUESTION 285

- (Exam Topic 2)

The process of obtaining seller responses, selecting a seller, and awarding a contract is called:

- A. Close Procurements.
- B. Control Procurements.
- C. Plan Procurements.
- D. Conduct Procurements.

Answer: D

NEW QUESTION 288

- (Exam Topic 2)

Which stakeholder approves a project's result?

- A. Customer
- B. Sponsor
- C. Seller
- D. Functional manager

Answer: A

NEW QUESTION 290

- (Exam Topic 2)

Which enterprise environmental factors may influence Plan Schedule Management?

- A. Cultural views regarding time schedules and professional and ethical behaviors
- B. Historical information and change control procedures
- C. Risk control procedures and the probability and impact matrix
- D. Resource availability and organizational culture and structure

Answer: D

NEW QUESTION 292

- (Exam Topic 2)

A special type of bar chart used in sensitivity analysis for comparing the relative importance of the variables is called a:

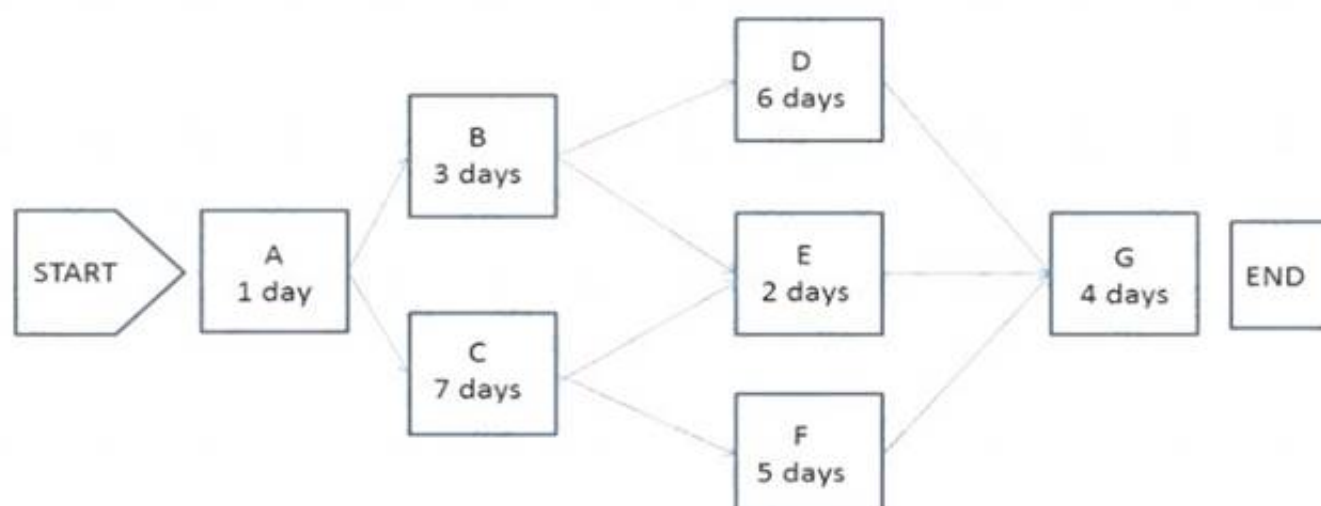
- A. triangular distribution
- B. tornado diagram
- C. beta distribution
- D. fishbone diagram

Answer: B

NEW QUESTION 296

- (Exam Topic 2)

The following is a network diagram for a project.



The shortest non-critical path for the project is how many days in duration?

- A. 10

- B. 12
- C. 14
- D. 16

Answer: A

NEW QUESTION 301

- (Exam Topic 2)

Skills necessary for project management such as motivating to provide encouragement; listening actively; persuading a team to perform an action; and summarizing, recapping, and identifying next steps are known as:

- A. organizational skills
- B. technical skills
- C. communication skills
- D. hard skills

Answer: C

NEW QUESTION 305

- (Exam Topic 2)

Which type of probability distribution is used to represent uncertain events such as the outcome of a test or a possible scenario in a decision tree?

- A. Uniform
- B. Continuous
- C. Discrete
- D. Linear

Answer: C

NEW QUESTION 308

- (Exam Topic 1)

A project charter is an output of which Process Group?

- A. Executing
- B. Planning
- C. Initiating
- D. Closing

Answer: C

NEW QUESTION 312

- (Exam Topic 1)

Which item is an output of Plan Quality Management and an input to Perform Quality Assurance?

- A. Organizational process updates
- B. Quality metrics
- C. Change requests
- D. Quality control measurements

Answer: B

NEW QUESTION 315

- (Exam Topic 1)

The number of potential communication channels for a project with 5 stakeholders is:

- A. 10.
- B. 12.
- C. 20.
- D. 24.

Answer: A

NEW QUESTION 318

- (Exam Topic 1)

Which tool or technique is used in the Perform Integrated Change Control process?

- A. Decomposition
- B. Modeling techniques
- C. Resource optimization
- D. Meetings

Answer: D

NEW QUESTION 320

- (Exam Topic 1)

Risk categorization is a tool or technique used in which process?

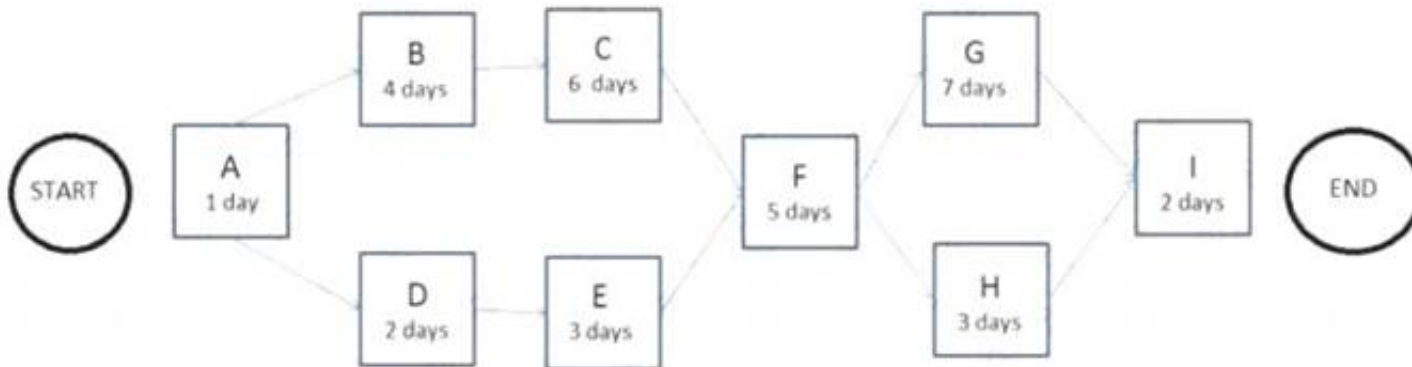
- A. Plan Risk Responses
- B. Plan Risk Management
- C. Perform Qualitative Risk Analysis
- D. Perform Quantitative Risk Analysis

Answer: C

NEW QUESTION 322

- (Exam Topic 2)

The following is a network diagram for a project.



What is the critical path for the project?

- A. A-B-C-F-G-I
- B. A-B-C-F-H-I
- C. A-D-E-F-G-I
- D. A-D-E-F-H-I

Answer: A

NEW QUESTION 325

- (Exam Topic 1)

What is the estimate at completion (EAC) if the budget at completion (BAC) is \$100, the actual cost (AC) is \$50, and the earned value (EV) is \$25?

- A. \$50
- B. \$100
- C. \$125
- D. \$175

Answer: C

NEW QUESTION 328

- (Exam Topic 1)

An input to the Plan Stakeholder Management process is:

- A. The project charter.
- B. The stakeholder analysis.
- C. A communication management plan.
- D. A stakeholder register.

Answer: D

NEW QUESTION 331

- (Exam Topic 1)

A key benefit of the Manage Communications process is that it enables:

- A. The best use of communication methods.
- B. An efficient and effective communication flow.
- C. Project costs to be reduced.
- D. The best use of communication technology.

Answer: B

NEW QUESTION 332

- (Exam Topic 1)

Status of deliverables, implementation status for change requests, and forecasted estimates to complete are examples of:

- A. Earned value management.
- B. Enterprise environmental factors.
- C. Organizational process assets.
- D. Work performance information.

Answer: D

NEW QUESTION 334

- (Exam Topic 1)

The iterative and interactive nature of the Process Groups creates the need for the processes in which Knowledge Area?

- A. Project Communications Management
- B. Project Integration Management
- C. Project Risk Management
- D. Project Scope Management

Answer: B

NEW QUESTION 339

- (Exam Topic 1)

A technique used to determine the cause and degree of difference between baseline and actual performance is:

- A. Product analysis.
- B. Variance analysis.
- C. Document analysis,
- D. Decomposition.

Answer: B

NEW QUESTION 344

- (Exam Topic 1)

Identify Risks is part of which Process Group?

- A. Planning
- B. Executing
- C. Closing
- D. Initiating

Answer: A

NEW QUESTION 349

- (Exam Topic 1)

The definition of when and how often the risk management processes will be performed throughout the project life cycle is included in which risk management plan component?

- A. Timing
- B. Methodology
- C. Risk categories
- D. Budgeting

Answer: A

NEW QUESTION 351

- (Exam Topic 1)

An effective technique for resolving conflict that incorporates multiple viewpoints from differing perspectives to achieve consensus and commitment is:

- A. smooth/accommodate.
- B. force/direct,
- C. collaborate/problem solve,
- D. compromise/reconcile.

Answer: C

NEW QUESTION 354

- (Exam Topic 1)

Which risk management strategy seeks to eliminate the uncertainty associated with a particular upside risk by ensuring that the opportunity is realized?

- A. Enhance
- B. Share
- C. Exploit
- D. Accept

Answer: C

NEW QUESTION 355

- (Exam Topic 1)

Which tool or technique of the Define Activities process allows for work to exist at various levels of detail depending on where it is in the project life cycle?

- A. Historical relationships
- B. Dependency determination
- C. Bottom-up estimating
- D. Rolling wave planning

Answer:

D

NEW QUESTION 360

- (Exam Topic 1)

Organizational theory is a tool used in which Project Human Resource Management process?

- A. Manage Project Team
- B. Acquire Project Team
- C. Develop Project Team
- D. Plan Human Resource Management

Answer: D

NEW QUESTION 365

- (Exam Topic 1)

An element of the project scope statement is:

- A. Acceptance criteria.
- B. A stakeholder list.
- C. A summary budget,
- D. High-level risks.

Answer: A

NEW QUESTION 369

- (Exam Topic 1)

In the Plan Stakeholder Management process, expert judgment is used to:

- A. Provide information needed to plan appropriate ways to engage project stakeholders.
- B. Ensure comprehensive identification and listing of new stakeholders.
- C. Analyze the information needed to develop the project scope statement.
- D. Decide the level of engagement of the stakeholders at each required stage.

Answer: D

NEW QUESTION 370

- (Exam Topic 1)

Reserve analysis is a tool and technique used in which process?

- A. Plan Risk Management
- B. Plan Risk Responses
- C. Identify Risks
- D. Control Risks

Answer: D

NEW QUESTION 373

- (Exam Topic 1)

Which Plan Schedule Management tool or technique may involve choosing strategic options to estimate and schedule the project?

- A. Facilitation techniques
- B. Expert judgment
- C. Analytical techniques
- D. Variance analysis

Answer: C

NEW QUESTION 378

- (Exam Topic 1)

The basis of identification for current or potential problems to support later claims or new procurements is provided by:

- A. A risk urgency assessment.
- B. The scope baseline.
- C. Work performance information.
- D. Procurement audits.

Answer: C

NEW QUESTION 379

- (Exam Topic 1)

Lessons learned are created and project resources are released in which Process Group?

- A. Planning
- B. Executing
- C. Closing
- D. Initiating

Answer: C

NEW QUESTION 383

- (Exam Topic 1)

Which process involves defining, preparing, and coordinating all subsidiary plans and integrating them into a comprehensive plan?

- A. Direct and Manage Project Work
- B. Develop Project Management Plan
- C. Plan Quality Management
- D. Monitor and Control Project Work

Answer: B

NEW QUESTION 387

- (Exam Topic 1)

Which group is formally chartered and responsible for reviewing, evaluating, approving, delaying, or rejecting changes to the project and for recording and communicating decisions?

- A. Project team
- B. Focus group
- C. Change control board
- D. Project stakeholders

Answer: C

NEW QUESTION 388

- (Exam Topic 1)

Which document describes the necessary information to determine if a project is worth the required investment?

- A. Cost baseline
- B. Service level agreement
- C. Memorandum of understanding
- D. Business case

Answer: D

NEW QUESTION 390

- (Exam Topic 1)

The organization's perceived balance between risk taking and risk avoidance is reflected in the risk:

- A. Responses
- B. Appetite
- C. Tolerance
- D. Attitude

Answer: A

NEW QUESTION 395

- (Exam Topic 1)

Stakeholder satisfaction should be managed as a key project:

- A. Benefit
- B. Initiative
- C. Objective
- D. Process

Answer: C

NEW QUESTION 397

- (Exam Topic 1)

The iterative process of increasing the level of detail in a project management plan as greater amounts of information become available is known as:

- A. Continuous improvement.
- B. Predictive planning.
- C. Progressive elaboration.
- D. Quality assurance.

Answer: C

NEW QUESTION 398

- (Exam Topic 1)

Which tool or technique is effective in a project in which the deliverable is not a service or result?

- A. Inspection
- B. Variance analysis

- C. Decomposition
- D. Product analysis

Answer: D

NEW QUESTION 400

- (Exam Topic 1)

Which input to Collect Requirements is used to identify stakeholders who can provide information on requirements?

- A. Stakeholder register
- B. Scope management plan
- C. Stakeholder management plan
- D. Project charter

Answer: A

NEW QUESTION 401

- (Exam Topic 1)

Which Knowledge Areas include processes from the Closing Process Group?

- A. Project Quality Management and Project Time Management
- B. Project Scope Management and Project Risk Management
- C. Project Stakeholder Management and Project Cost Management
- D. Project Integration Management and Project Procurement Management

Answer: D

NEW QUESTION 404

- (Exam Topic 1)

An input used in developing the communications management plan is:

- A. Communication models.
- B. Enterprise environmental factors.
- C. Organizational communications,
- D. Organizational cultures and styles.

Answer: B

NEW QUESTION 407

- (Exam Topic 1)

An input to the Plan Cost Management process is:

- A. Cost estimates.
- B. Resource calendars,
- C. The project charter,
- D. The risk register.

Answer: C

NEW QUESTION 412

- (Exam Topic 1)

The Identify Stakeholders process is found in which Process Group?

- A. Initiating
- B. Monitoring and Controlling
- C. Planning
- D. Executing

Answer: A

NEW QUESTION 413

- (Exam Topic 1)

Regression analysis, failure mode and effect analysis (FMEA), fault tree analysis (FTA), and trend analysis are examples of which tool or technique?

- A. Expert judgment
- B. Forecasting methods
- C. Earned value management
- D. Analytical techniques

Answer: D

NEW QUESTION 418

- (Exam Topic 1)

Which quality management and control tool is useful in visualizing parent-to-child relationships in any decomposition hierarchy that uses a systematic set of rules that define a nesting relationship?

- A. Interrelationship digraphs
- B. Tree diagram
- C. Affinity diagram
- D. Network diagram

Answer: B

NEW QUESTION 419

- (Exam Topic 1)

Typical outcomes of a project include:

- A. Products, services, and improvements.
- B. Products, programs, and services.
- C. Improvements, portfolios, and services.
- D. Improvements, processes, and products.

Answer: A

NEW QUESTION 424

- (Exam Topic 1)

Which type of dependency is established based on knowledge of best practices within a particular application area or some unusual aspect of the project in which a specific sequence is desired, even though there may be other acceptable sequences?

- A. External
- B. Internal
- C. Mandatory
- D. Discretionary

Answer: D

NEW QUESTION 429

- (Exam Topic 1)

Which cost is associated with nonconformance?

- A. Liabilities
- B. Inspections
- C. Training
- D. Equipment

Answer: A

NEW QUESTION 434

- (Exam Topic 1)

The process of estimating the type and quantity of material, human resources, equipment, or supplies required to perform each activity is known as:

- A. Collect Requirements.
- B. Conduct Procurements.
- C. Estimate Activity Durations.
- D. Estimate Activity Resources.

Answer: D

NEW QUESTION 438

- (Exam Topic 1)

An output of the Develop Project Team process is:

- A. Organizational process assets.
- B. Enterprise environmental factors updates.
- C. Project staff assignments.
- D. Organizational charts and position descriptions.

Answer: B

NEW QUESTION 443

- (Exam Topic 1)

Payback period, return on investment, internal rate of return, discounted cash flow, and net present value are all examples of:

- A. Expert judgment.
- B. Analytical techniques.
- C. Earned value management.
- D. Group decision-making techniques.

Answer: B

NEW QUESTION 444

- (Exam Topic 1)

A project manager providing information to the right audience, in the right format, at the right time is an example of which type of communication?

- A. Efficient
- B. Effective
- C. Push
- D. Pull

Answer: B

NEW QUESTION 447

- (Exam Topic 1)

A reward can only be effective if it is:

- A. Given immediately after the project is completed.
- B. Something that is tangible.
- C. Formally given during project performance appraisals.
- D. Satisfying a need valued by the individual.

Answer: D

NEW QUESTION 452

- (Exam Topic 1)

Which tools or techniques are used in the Plan Schedule Management process?

- A. Benchmarking, expert judgment, and analytical techniques
- B. Statistical sampling, benchmarking, and meetings
- C. Negotiations, pre-assignment, and multi-criteria decision analysis
- D. Expert judgment, analytical techniques, and meetings

Answer: D

NEW QUESTION 455

- (Exam Topic 1)

Which basic quality tool is most useful when gathering attributes data in an inspection to identify defects?

- A. Control charts
- B. Pareto diagrams
- C. Ishikavva diagrams
- D. Checksheets

Answer: D

NEW QUESTION 456

- (Exam Topic 1)

An output of the Direct and Manage Project Work process is:

- A. Deliverables.
- B. Activity lists.
- C. A work breakdown structure.
- D. A scope statement.

Answer: A

NEW QUESTION 459

- (Exam Topic 1)

The business needs, assumptions, and constraints and the understanding of the customers needs and high-level requirements are documented in the:

- A. Project management plan.
- B. Project charter.
- C. Work breakdown structure.
- D. Stakeholder register.

Answer: B

NEW QUESTION 461

- (Exam Topic 1)

An input to Close Project or Phase is:

- A. Accepted deliverables,
- B. Final products or services,
- C. Document updates,
- D. Work performance information.

Answer: A

NEW QUESTION 464

- (Exam Topic 1)

The process of establishing the policies, procedures, and documentation for planning, developing, managing, executing, and controlling the project schedule is known as:

- A. Plan Schedule Management.
- B. Develop Project Charter.
- C. Develop Schedule.
- D. Plan Scope Management.

Answer: A

NEW QUESTION 468

- (Exam Topic 6)

Which format can a network diagram take?

- A. Flow chart
- B. Control chart
- C. Affinity diagram
- D. Cause-and-effect diagram

Answer: A

NEW QUESTION 470

- (Exam Topic 6)

How can a project manager maintain the engagement of stakeholders in a project with a high degree of change?

- A. Monitor project stakeholder relationships using engaging strategies and plans
- B. Send all project documents to stakeholders each time they are modified
- C. Schedule monthly meetings with the stakeholders, including team members
- D. Engage only with the project sponsors

Answer: C

NEW QUESTION 471

- (Exam Topic 6)

What type of change requires the submission of a change request?

- A. Changes in assigned resources
- B. Changes in a technical solution
- C. Changes in status reporting
- D. Changes in the project's scope

Answer: D

NEW QUESTION 474

- (Exam Topic 6)

Which tasks should a project manager accomplish in order to manage project scope correctly?

- A. Defin
- B. Validate, and Control Scop
- C. Control Schedule; Control Costs and Manage Stakeholder Engagement
- D. Collect Requirement
- E. Define Scop
- F. Create WB
- G. Develop Schedule, and Manage Stakeholder Engagement
- H. Plan Scope Management; Collect Requirements; Defin
- I. Validate, and Control Scope; and Create WBS
- J. Defin
- K. Validate, and Control Scop
- L. Control Cost
- M. Manage Stakeholder Engagement, and keep budget under control

Answer: C

NEW QUESTION 475

- (Exam Topic 6)

Match the influence with its corresponding category of influence.



- A. Mastered
- B. Not Mastered

Answer: A

Explanation:



NEW QUESTION 480

- (Exam Topic 6)

Which is an example of analogous estimating?

- A. Estimates are created by individuals or groups with specialized knowledge.
- B. Estimates are created by using information about resources of previous similar projects.
- C. Estimates are created by analyzing data.
- D. Estimates are created at the task level and aggregated upwards.

Answer: B

NEW QUESTION 481

- (Exam Topic 6)

Which of the following are processes associated with Project Cost Management?

- A. Develop Cost
- B. Estimate Costs, Determine Budget
- C. Control Costs
- D. Develop Budget, Determine Budget, Determine Risks, Control Costs
- E. Plan Cost Management, Estimate Cost
- F. Determine Budget
- G. Control Costs
- H. Plan Budget Management
- I. Determine Budget, Create Cost Account
- J. Control Costs

Answer: C

NEW QUESTION 486

- (Exam Topic 6)

A project manager is addressing risks and potential concerns related to stakeholder management, and is clarifying and resolving previously identified issues. In which process is the project manager engaged?

- A. Identify Stakeholders
- B. Plan Stakeholder Engagement
- C. Manage Stakeholder Engagement
- D. Monitor Stakeholder Engagement

Answer: B

NEW QUESTION 491

- (Exam Topic 6)

Which of the following set of elements is part of an effective communications management plan?

- A. Escalation processes, person responsible for communicating the information, glossary of common terminology, methods or technologies used to convey the information
- B. Phone book directory, stakeholder communication requirements, project charter, glossary of common terminology
- C. Organizational chart, escalation processes, person responsible for communicating the information, project management plan, glossary of common terminology
- D. Glossary of common terminology, constraints derived from specific legislation and regulation, person responsible for communicating information, project management plan, resource management plan

Answer: A

NEW QUESTION 494

- (Exam Topic 6)

Which contract type is least desirable to a vendor?

- A. Fixed price with economic price adjustment (FPEPA)
- B. Firm fixed price (FFP)
- C. Cost plus fixed fee (CPFF)
- D. Cost plus award fee (CPAF)

Answer: B

NEW QUESTION 495

- (Exam Topic 5)

Which risk response strategy is common for both positive and negative risks?

- A. Share
- B. Accept
- C. Mitigate
- D. Transfer

Answer: B

NEW QUESTION 500

- (Exam Topic 5)

The correct equation for schedule variance (SV) is earned value:

- A. minus planned value [EV - PV].
- B. minus actual cost [EV - AC].
- C. divided by planned value [EV/PV],
- D. divided by actual cost [EV/AC].

Answer: A

NEW QUESTION 504

- (Exam Topic 5)

Using the three-point estimating technique, if the most likely duration is four months, the optimistic duration is two months, and the pessimistic duration is one year, how many months is the expected activity duration?

- A. Two
- B. Four
- C. Five
- D. Twelve

Answer: C

NEW QUESTION 507

- (Exam Topic 5)

What are the identified risks for doing excessive decomposition in a WBS?

- A. Insufficient project funding and disqualification of sellers
- B. Insufficient project funding and ineffective use of resources
- C. Disqualification of sellers and non-productive management efforts
- D. Non-productive management effort and inefficient use of resources

Answer: D

NEW QUESTION 509

- (Exam Topic 5)

The total of the planned value (PV) is also known as:

- A. work breakdown structure (WBS).
- B. schedule target.
- C. performance measurement baseline (PMB).
- D. earned value baseline.

Answer: C

NEW QUESTION 514

- (Exam Topic 5)

Which of the following is an output of Define Scope?

- A. Project scope statement
- B. Project charter
- C. Project plan
- D. Project schedule

Answer: A

NEW QUESTION 519

- (Exam Topic 5)

One of the objectives of a quality audit is to:

- A. highlight the need for root cause analysis.
- B. share the process documentation among stakeholders.
- C. offer assistance with non-value-added activities.
- D. identify all of the gaps or shortcomings.

Answer: D

NEW QUESTION 524

- (Exam Topic 5)

Which of the following change requests can bring expected future performance of the project work in line with the project management plan?

- A. Corrective action
- B. Defect repair
- C. Preventative action
- D. Probable action

Answer: A

NEW QUESTION 527

- (Exam Topic 5)

Which of the following response strategies are appropriate for negative risks or threats?

- A. Share, Accept, Transfer, or Mitigate
- B. Exploit, Enhance, Share, or Accept
- C. Mitigate, Share, Avoid, or Accept
- D. Avoid, Mitigate, Transfer, or Accept

Answer: D

NEW QUESTION 532

- (Exam Topic 5)

Which of the following is a tool and technique used to monitor risk?

- A. Technical performance measurement
- B. Cost performance baseline
- C. Benchmarking
- D. Cost of quality

Answer: A

NEW QUESTION 537

- (Exam Topic 5)

Which process requires implementation of approved changes?

- A. Direct and Manage Project Execution
- B. Monitor and Control Project Work
- C. Perform Integrated Change Control
- D. Close Project or Phase

Answer: A

NEW QUESTION 541

- (Exam Topic 5)

In Plan Risk Management, which of the management plans determines who will be available to share information on various risks and responses at different times and locations?

- A. Schedule
- B. Quality
- C. Communications
- D. Cost

Answer: C

NEW QUESTION 543

- (Exam Topic 5)

A project manager at a publishing company decides to initiate the editing phase of the project as soon as each chapter is written. Which type of Sequence Activities tool and technique is involved, considering that there was a start-to-start relationship with a 15-day delay?

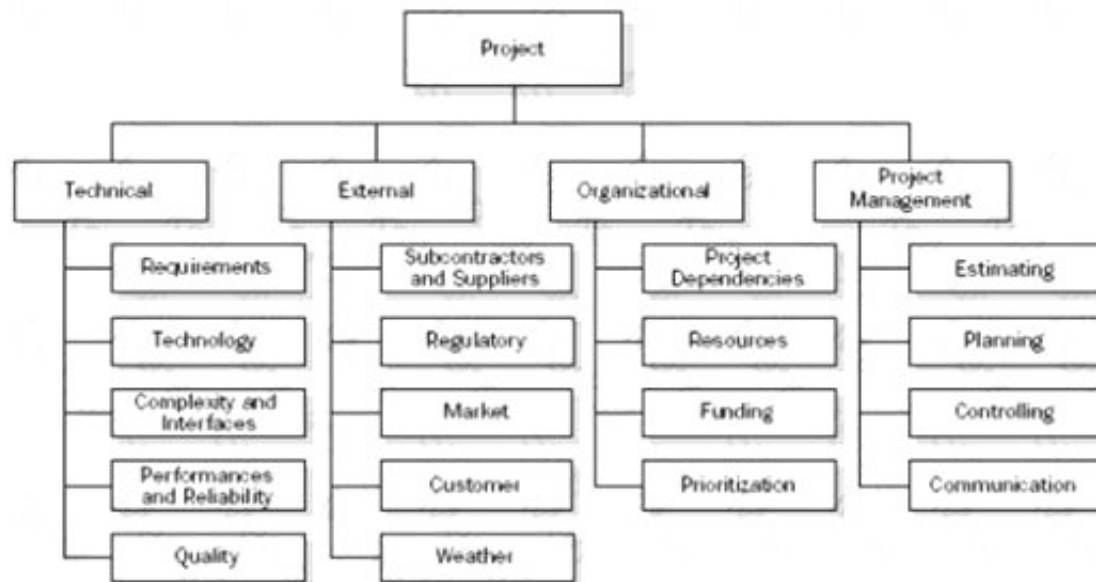
- A. Slack
- B. Float
- C. Lag
- D. Lead

Answer: C

NEW QUESTION 548

- (Exam Topic 5)

The diagram below is an example of a:



- A. Risk breakdown structure (RBS).
- B. Project team.
- C. SWOT Analysis.
- D. Work breakdown structure (WBS).

Answer: A

NEW QUESTION 550

- (Exam Topic 5)

Which of the following is an output of the Conduct Procurements process?

- A. Project statement of work
- B. Selected sellers
- C. Risk register updates
- D. Teaming agreements

Answer: B

NEW QUESTION 554

- (Exam Topic 5)

The risk shared between the buyer and seller is determined by the:

- A. assumption log.
- B. quality checklist.
- C. risk register.
- D. contract type.

Answer: D

NEW QUESTION 559

- (Exam Topic 5)

Expected monetary value (EMV) is computed by which equation?

- A. Value of each possible outcome multiplied by probability of occurrence
- B. Value of each possible outcome multiplied by probability of non-occurrence
- C. Multiplying the value of each possible outcome by the probability of occurrence and adding the products together
- D. Multiplying the value of each possible outcome by the probability of non-occurrence and adding the products together

Answer: C

NEW QUESTION 561

- (Exam Topic 5)

Which of the following is an output of Close Procurements?

- A. Accepted deliverables
- B. Organizational process assets updates
- C. Managing stakeholder expectations
- D. Performance reports

Answer: B

NEW QUESTION 564

- (Exam Topic 5)

Plan-do-check-act is also known as:

- A. prevention over inspection.
- B. statistical sampling.
- C. management responsibility,
- D. continuous improvement.

Answer: D

NEW QUESTION 565

- (Exam Topic 5)

When a permitting agency takes longer than planned to issue a permit, this can be described as a risk:

- A. event.
- B. response,
- C. perception.
- D. impact.

Answer: A

NEW QUESTION 569

- (Exam Topic 5)

Under which type of contract does the seller receive reimbursement for all allowable costs for performing contract work, as well as a fixed-fee payment calculated as a percentage of the initial estimated project costs?

- A. Cost Plus Fixed Fee Contract (CPFF)
- B. Cost Plus Incentive Fee Contract (CPIF)
- C. Firm Fixed Price Contract (FFP)
- D. Fixed Price with Economic Price Adjustment Contract (FP-EPA)

Answer: A

NEW QUESTION 574

- (Exam Topic 5)

Which Process Group contains the processes performed to complete the work defined in the project management plan to satisfy the project specifications?

- A. Initiating
- B. Planning
- C. Executing
- D. Closing

Answer: C

NEW QUESTION 576

- (Exam Topic 5)

Which process is responsible for monitoring the status of the project and product scope and managing changes to the scope baseline?

- A. Variance Analysis
- B. Define Scope
- C. Verify Scope
- D. Control Scope

Answer: D

NEW QUESTION 580

- (Exam Topic 5)

Which type of dependency is contractually required or inherent in the nature of the work?

- A. External
- B. Lead
- C. Discretionary
- D. Mandatory

Answer: D

NEW QUESTION 583

- (Exam Topic 5)

Projects are separated into phases or subprojects; these phases include:

- A. feasibility study, concept development, design, and prototype.
- B. initiate, plan, execute, and monitor.
- C. Develop Charter, Define Activities, Manage Stakeholder Expectations, and Report Performance.
- D. Identify Stakeholders, develop concept, build, and test.

Answer: A

NEW QUESTION 587

- (Exam Topic 5)

An input to the Estimate Activity Resources process is:

- A. Activity resource requirements.
- B. Published estimating data.
- C. Resource calendars.
- D. Resource breakdown structure (RBS).

Answer: C

NEW QUESTION 591

- (Exam Topic 5)

The item that provides more detailed descriptions of the components in the work breakdown structure (WBS) is called a WBS:

- A. dictionary.
- B. chart.
- C. report.
- D. register.

Answer: A

NEW QUESTION 593

- (Exam Topic 5)

The cost benefit analysis tool is used for creating:

- A. Pareto charts.
- B. quality metrics.
- C. change requests,
- D. Ishikawa diagrams.

Answer: B

NEW QUESTION 596

- (Exam Topic 5)

The probability and impact matrix is primarily used to:

- A. Quantify risk issues for trends during a quality audit.
- B. Develop a risk register for risk planning.
- C. Evaluate each risk's importance and priority during Perform Qualitative Risk Analysis.
- D. Define risk and compare impacts during Perform Quantitative Risk Analysis.

Answer: C

NEW QUESTION 598

- (Exam Topic 5)

In the basic communication model, which term refers to the method that is used to convey the message?

- A. Decode
- B. Encode
- C. Medium
- D. Noise

Answer: C

NEW QUESTION 601

- (Exam Topic 5)

The technique of subdividing project deliverables into smaller, more manageable components until the work and deliverables are defined to the work package level is called:

- A. a control chart.
- B. baseline.
- C. Create WBS.
- D. decomposition.

Answer:

D

NEW QUESTION 606

- (Exam Topic 5)

While preparing the project management plan on a weekly basis, the project manager indicates the intention to provide an issues report to the staff via e-mail. In which part of the plan will this type of information be included?

- A. Communications management plan
- B. Human resource plan
- C. Quality management plan
- D. Procurement management plan

Answer: A

NEW QUESTION 611

- (Exam Topic 5)

The initial development of a Project Scope Management plan uses which technique?

- A. Alternatives identification
- B. Scope decomposition
- C. Expert judgment
- D. Product analysis

Answer: C

NEW QUESTION 613

- (Exam Topic 5)

When cost variance is negative and schedule variance is positive, the project is:

- A. under budget and behind schedule.
- B. over budget and ahead of schedule.
- C. on schedule.
- D. complete; all planned values have been earned.

Answer: B

NEW QUESTION 615

- (Exam Topic 5)

An input to the Collect Requirements process is the:

- A. stakeholder register.
- B. project management plan.
- C. project scope statement.
- D. requirements management plan.

Answer: A

NEW QUESTION 618

- (Exam Topic 5)

The three processes of Project Cost Management are:

- A. Estimate Costs, Control Schedule, and Control Costs.
- B. Estimate Costs, Determine Budget, and Estimate Activity Resources.
- C. Determine Budget, Control Schedule, and Estimate Activity Resources.
- D. Estimate Costs, Determine Budget, and Control Costs.

Answer: D

NEW QUESTION 623

- (Exam Topic 5)

The process improvement plan details the steps for analyzing processes to identify activities which enhance their:

- A. quality.
- B. value.
- C. technical performance.
- D. status.

Answer: B

NEW QUESTION 626

- (Exam Topic 5)

Which of the following is a tool or technique used in the Determine Budget process?

- A. Variance analysis
- B. Three-point estimating
- C. Bottom-up estimating

D. Historical relationships

Answer: D

NEW QUESTION 631

- (Exam Topic 5)

In which type of contract are the performance targets established at the onset and the final contract price determined after completion of all work based on the sellers performance?

- A. Firm-Fixed-Price (FFP)
- B. Fixed Price with Economic Price Adjustments (FP-EPA)
- C. Fixed-Price-Incentive-Fee (FPIF)
- D. Cost Plus Fixed Fee (CPFF)

Answer: C

NEW QUESTION 633

- (Exam Topic 4)

In which process might a project manager use risk reassessment as a tool and technique?

- A. Perform Qualitative Risk Analysis
- B. Monitor and Control Risk
- C. Monitor and Control Project Work
- D. Plan Risk Responses

Answer: B

NEW QUESTION 635

- (Exam Topic 4)

A tool and technique used during the Perform Qualitative Risk Analysis process is:

- A. risk data quality assessment.
- B. variance and trend analysis.
- C. data gathering and representation techniques.
- D. risk audits.

Answer: A

NEW QUESTION 640

- (Exam Topic 4)

Which of the following processes audits the quality requirements and the results from quality control measures to ensure appropriate quality standards and operational definitions are used?

- A. Perform Quality Control
- B. Quality Metrics
- C. Perform Quality Assurance
- D. Plan Quality

Answer: C

NEW QUESTION 642

- (Exam Topic 4)

Documented identification of a flaw in a project component together with a recommendation is termed a:

- A. corrective action.
- B. preventive action.
- C. non-conformance report,
- D. defect repair.

Answer: D

NEW QUESTION 646

- (Exam Topic 4)

Which piece of information is part of the WBS Dictionary?

- A. Responsible organization
- B. Change requests
- C. Validated deliverables
- D. Organizational process assets

Answer: A

NEW QUESTION 648

- (Exam Topic 4)

How is the schedule variance calculated using the earned value technique?

- A. EV less AC
- B. AC less PV
- C. EV less PV
- D. AC less EV

Answer: C

NEW QUESTION 653

- (Exam Topic 4)

Which of the following is an input to Control Scope?

- A. Project schedule
- B. Organizational process assets updates
- C. Project document updates
- D. Work performance information

Answer: D

NEW QUESTION 654

- (Exam Topic 4)

A tool or technique in Perform Quality Control that a project manager would use is:

- A. quality audits.
- B. process analysis.
- C. benchmarking.
- D. inspection.

Answer: D

NEW QUESTION 655

- (Exam Topic 4)

Which tool or technique is used in Manage Stakeholder Expectations?

- A. Stakeholder management strategy
- B. Communication methods
- C. Issue log
- D. Change requests

Answer: B

NEW QUESTION 657

- (Exam Topic 4)

Who provides the inputs for the original estimates of activity durations for tasks on the project plan?

- A. Project sponsor
- B. Project manager
- C. Person responsible for project scheduling
- D. Person who is most familiar with the task

Answer: D

NEW QUESTION 662

- (Exam Topic 4)

In the Develop Project Team process, which of the following is identified as a critical factor for a project's success?

- A. Team meetings
- B. Subcontracting teams
- C. Virtual teams
- D. Teamwork

Answer: D

NEW QUESTION 663

- (Exam Topic 4)

Which of the following Project Communication Management processes uses performance reports as an input?

- A. Manage Stakeholder Expectations
- B. Report Performance
- C. Distribute Information
- D. Plan Communications

Answer: C

NEW QUESTION 667

- (Exam Topic 4)

Which of the following documents allows the project manager to assess risks that may require near term action?

- A. Probability and impact matrix
- B. Contingency analysis report
- C. Risk urgency assessment
- D. Rolling wave plan

Answer: C

NEW QUESTION 672

- (Exam Topic 4)

Co-location is a tool and technique of:

- A. Develop Human Resource Plan.
- B. Manage Project Team.
- C. Develop Project Team.
- D. Acquire Project Team.

Answer: C

NEW QUESTION 675

- (Exam Topic 4)

Which Perform Quality Control tool graphically represents how various elements of a system interrelate?

- A. Control chart
- B. Flowchart
- C. Run chart
- D. Pareto chart

Answer: B

NEW QUESTION 679

- (Exam Topic 4)

Which of the following tools and techniques is used in the Verify Scope process?

- A. Inspection
- B. Variance analysis
- C. Expert judgment
- D. Decomposition

Answer: A

NEW QUESTION 682

- (Exam Topic 4)

In Project Cost Management, which input is exclusive to the Determine Budget process?

- A. Scope baseline
- B. Organizational process assets
- C. Project schedule
- D. Resource calendars

Answer: D

NEW QUESTION 683

- (Exam Topic 4)

Labor, materials, equipment, and supplies are examples of:

- A. Resource attributes.
- B. Resource types.
- C. Resource categories.
- D. Resource breakdown structures (RBS).

Answer: C

NEW QUESTION 685

- (Exam Topic 4)

Which of the following is an output of the Distribute Information process?

- A. Project calendar
- B. Communications management plan
- C. Organizational process assets updates
- D. Project document updates

Answer: C

NEW QUESTION 686

- (Exam Topic 4)

The process of aggregating the estimated costs of individual activities or work packages to establish an authorized cost baseline is:

- A. Determine Budget.
- B. Baseline Budget.
- C. Control Costs.
- D. Estimate Costs.

Answer: A

NEW QUESTION 691

- (Exam Topic 4)

Which of the following is an input to Develop Human Resource Plan?

- A. Team performance assessment
- B. Roles and responsibilities
- C. Staffing management plan
- D. Enterprise environmental factors

Answer: D

NEW QUESTION 695

- (Exam Topic 4)

The key benefit of the Monitoring and Controlling Process Group is the ability to:

- A. establish and manage project communication channels, both external and internal to the project team.
- B. influence the stakeholders that want to circumvent integrated change control so that their changes are implemented.
- C. monitor the ongoing project team against the team performance assessments and the project performance baseline.
- D. observe and measure project performance regularly and consistently to identify variances from the project management plan.

Answer: D

NEW QUESTION 697

- (Exam Topic 4)

The risk management team of a software project has decided that due to the lack of adequate talent in the company, development of a specific part of the system is under high risk, so the team has decided to outsource it. This is an example of which risk response?

- A. Transfer
- B. Share
- C. Avoid
- D. Accept

Answer: A

NEW QUESTION 698

- (Exam Topic 4)

Which type of risk diagram is useful for showing time ordering of events?

- A. Ishikawa
- B. Milestone
- C. Influence
- D. Decision tree

Answer: C

NEW QUESTION 699

- (Exam Topic 4)

Which of the following is an output from Control Scope?

- A. Change requests
- B. Variance analysis
- C. Accepted deliverables
- D. Requirements documentation

Answer: A

NEW QUESTION 700

- (Exam Topic 4)

Which of the following is an output of Direct and Manage Project Execution?

- A. Project management plan
- B. Change request status updates
- C. Organizational process assets updates
- D. Work performance information

Answer: D

NEW QUESTION 702

- (Exam Topic 4)

In which process is a project manager identified and given the authority to apply resources to project activities?

- A. Acquire Project Team
- B. Develop Project Management Plan
- C. Manage Project Execution
- D. Develop Project Charter

Answer: D

NEW QUESTION 706

- (Exam Topic 4)

Control charts, flowcharting, histograms, Pareto charts, and scatter diagrams are tools and techniques of which process?

- A. Perform Quality Control
- B. Perform Quality Assurance
- C. Plan Quality
- D. Report Performance

Answer: C

NEW QUESTION 707

- (Exam Topic 4)

Prioritizing risks for further analysis or action by assessing and combining their probability of occurrence and impact takes place in which process?

- A. Monitor and Control Risks
- B. Plan Risk Management
- C. Perform Qualitative Risk Analysis
- D. Perform Quantitative Risk Analysis

Answer: C

NEW QUESTION 711

- (Exam Topic 4)

Which type of chart is a graphic representation of a process showing the relationships among process steps?

- A. Control
- B. Bar
- C. Flow
- D. Pareto

Answer: C

NEW QUESTION 715

- (Exam Topic 4)

Which of the following are outputs of Develop Project Team?

- A. Human resources plan changes and project staff assignment updates
- B. Project management plan updates and enterprise environmental factor updates
- C. Resource calendars and project management plan updates
- D. Team performance assessments and enterprise environmental factor updates

Answer: D

NEW QUESTION 718

- (Exam Topic 4)

As the project progresses, which of the following is routinely collected from the project activities?

- A. Communication management activities
- B. Change requests
- C. Configuration verification and audit
- D. Work performance information

Answer: D

NEW QUESTION 723

- (Exam Topic 4)

Managing procurement relationships and monitoring contract performance are part of which process?

- A. Conduct Procurements
- B. Plan Procurements
- C. Administer Procurements
- D. Close Procurements

Answer: C

NEW QUESTION 726

- (Exam Topic 4)

Ensuring that both parties meet contractual obligations and that their own legal rights are protected is a function of:

- A. Conduct Procurements.
- B. Close Procurements.
- C. Administer Procurements,
- D. Plan Procurements.

Answer: C

NEW QUESTION 729

- (Exam Topic 4)

Which tool and technique is used in Conduct Procurements?

- A. Teaming agreements
- B. Expert judgment
- C. Bidder conferences
- D. Contract types

Answer: C

NEW QUESTION 730

- (Exam Topic 4)

Which of the following strategic considerations often results in project authorization?

- A. Customer requests and/or issue resolution
- B. Stakeholder expectations and/or strategic opportunity (business need)
- C. Technological advancement and/or senior executive request
- D. Market demand and/or legal requirements

Answer: D

NEW QUESTION 735

- (Exam Topic 4)

Which of the following is developed from the project scope baseline and defines only that portion of the project scope that is to be included within a related contract?

- A. Product scope description
- B. Procurement statement of work
- C. Project schedule
- D. Work breakdown structure (WBS)

Answer: B

NEW QUESTION 738

- (Exam Topic 4)

The output that defines an approach to increase the support and minimize negative impacts of stakeholders is the:

- A. stakeholder management strategy.
- B. communications management plan,
- C. stakeholder register,
- D. performance report.

Answer: A

NEW QUESTION 742

- (Exam Topic 4)

Which type of elaboration allows a project management team to manage at a greater level of detail as the project evolves?

- A. Cyclic
- B. Progressive
- C. Repetitive
- D. Iterative

Answer: B

NEW QUESTION 744

- (Exam Topic 4)

What is the responsibility of the project manager and the functional manager respectively?

- A. Oversight for an administrative area; a facet of the core business
- B. Achieving the project objectives; providing management oversight for an administrative area
- C. A facet of the core business; achieving the project objectives
- D. Both are responsible for achieving the project objectives.

Answer: B

NEW QUESTION 746

- (Exam Topic 4)

Which is a communication method used in the Report Performance process?

- A. Expert judgment
- B. Project management methodology
- C. Stakeholder analysis
- D. Status review meetings

Answer: D

NEW QUESTION 751

- (Exam Topic 4)

The process of identifying the stakeholders' information needs is completed during:

- A. Plan Communications.
- B. Manage Stakeholder Expectations.
- C. Stakeholder Analysis.
- D. Identify Stakeholders.

Answer: A

NEW QUESTION 752

- (Exam Topic 4)

In which domain of project management would a Pareto chart provide useful information?

- A. Project Scope Management
- B. Project Time Management
- C. Project Communications Management
- D. Project Quality Management

Answer: D

NEW QUESTION 753

- (Exam Topic 4)

Which of the following is an example of the simplest fixed-price contract?

- A. Purchase requisition
- B. Purchase order
- C. Verbal agreement
- D. Request for quote

Answer: B

NEW QUESTION 755

- (Exam Topic 4)

Which Process Group contains those processes performed to define a new project?

- A. Initiating
- B. Planning
- C. Executing
- D. Closing

Answer: A

NEW QUESTION 757

- (Exam Topic 4)

Types of internal failure costs include:

- A. inspections.
- B. equipment and training.
- C. lost business.
- D. reworking and scrapping.

Answer: D

NEW QUESTION 759

- (Exam Topic 4)

Which of the following statements is true regarding project and product lifecycles?

- A. A single product lifecycle may consist of multiple project lifecycles.
- B. A product lifecycle is always shorter than the project lifecycle.
- C. A single product lifecycle can only have one project lifecycle.

D. A single project lifecycle may consist of multiple product lifecycles.

Answer: A

NEW QUESTION 764

- (Exam Topic 4)

Which of the following factors is lowest at the start of the project?

- A. Cost of changes
- B. Stakeholder influences
- C. Risk
- D. Uncertainty

Answer: A

NEW QUESTION 767

- (Exam Topic 4)

The project manager needs to review the templates in use. The templates are part of the:

- A. Enterprise environmental factors.
- B. Historical information,
- C. Organizational process assets.
- D. Corporate knowledge base.

Answer: C

NEW QUESTION 769

- (Exam Topic 4)

How many Project Management Process Groups are there?

- A. 3
- B. 4
- C. 5
- D. 6

Answer: C

NEW QUESTION 770

- (Exam Topic 6)

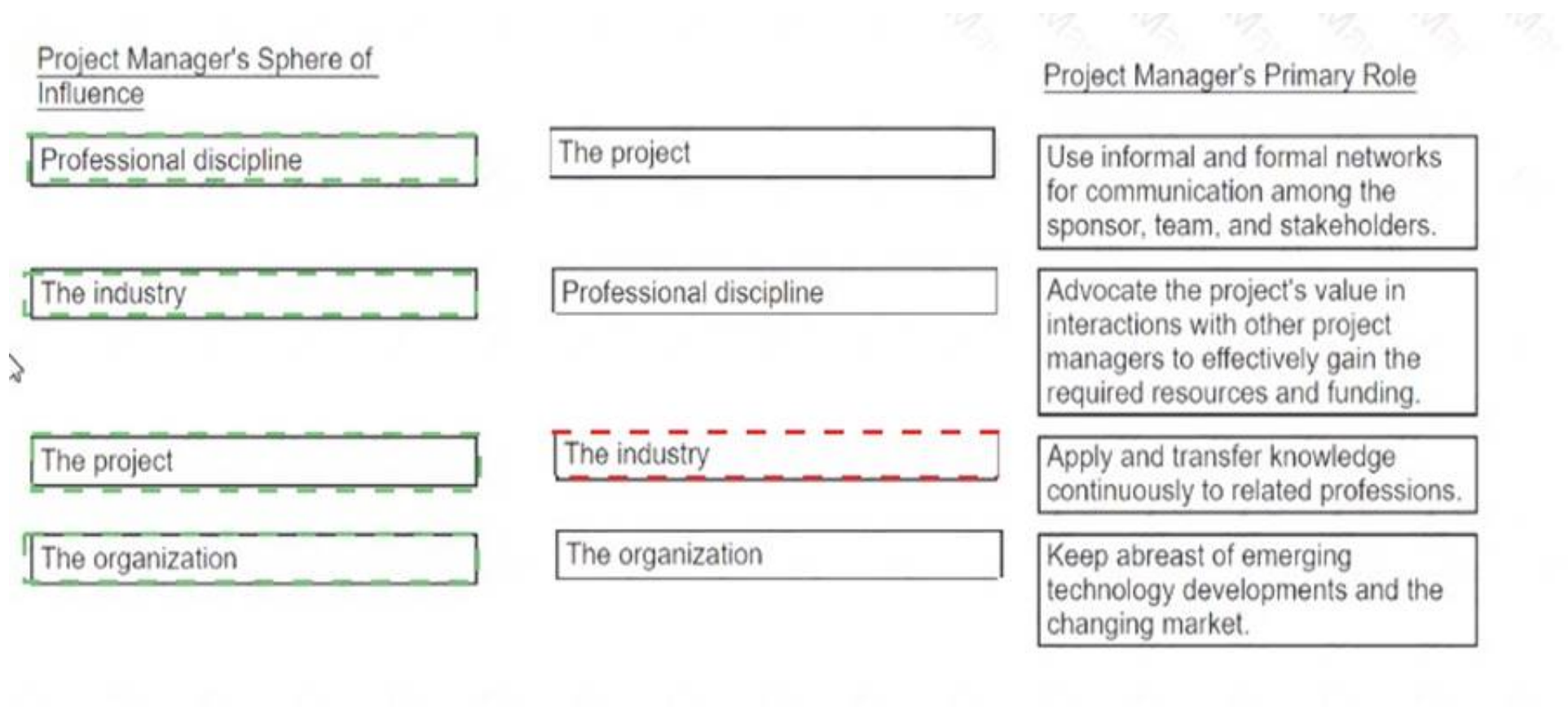
Match the project manager's sphere of influence with the associated primary role.

Project Manager's Sphere of Influence		Project Manager's Primary Role
Professional discipline		Use informal and formal networks for communication among the sponsor, team, and stakeholders.
The industry		Advocate the project's value in interactions with other project managers to effectively gain the required resources and funding.
The project		Apply and transfer knowledge continuously to related professions.
The organization		Keep abreast of emerging technology developments and the changing market.

- A. Mastered
- B. Not Mastered

Answer: A

Explanation:



NEW QUESTION 772

- (Exam Topic 6)

Perform Quantitative Risk Analysis focuses on:

- A. compiling a list of known risks and preparing responses to them.
- B. assessing the probability of occurrence and Impact for every risk in the risk register.
- C. evaluating the contingency and management reserves required for the project.
- D. analyzing numerically the impact of individual risks on the overall project's time and cost objectives.

Answer: D

NEW QUESTION 776

- (Exam Topic 6)

To which knowledge area does the Collect Requirements process belong?

- A. Quality Management
- B. Scope Management
- C. Cost Management
- D. Integration Management

Answer: B

NEW QUESTION 781

- (Exam Topic 6)

In an agile or adaptive environment, when should risk be monitored and prioritized?

- A. Only during the initiation and Closing phases
- B. During the initiation and Planning phases
- C. During each iteration as the project progresses
- D. Throughout the Planning process group and retrospective meeting

Answer: C

NEW QUESTION 786

- (Exam Topic 6)

What is the project manager's responsibility in Project Integration Management?

- A. Ensuring that requirements-related work is clarified in the project management plan
- B. Investing sufficient effort in acquiring, managing, motivating, and empowering the project team
- C. Combining the results in all other knowledge areas, and overseeing the project as a whole
- D. Developing a strategy to ensure effective stakeholder communication

Answer: A

NEW QUESTION 788

- (Exam Topic 6)

Which of the following sets are inputs to the Collect Requirements process?

- A. Project charter and requirements documentation

- B. Project charter and business documents
- C. Project charter and stakeholder requirements
- D. Business documents and requirements traceability matrix

Answer: B

NEW QUESTION 791

- (Exam Topic 6)

Stakeholder identification and engagement should begin during what phase of the project?

- A. After the project management plan is completed
- B. After the stakeholder engagement plan is completed
- C. As soon as the project charter has been approved
- D. After the communications management plan is completed

Answer: A

NEW QUESTION 795

- (Exam Topic 6)

The project management plan requires the acquisition of a special part available from a supplier located abroad. Which source selection method is being used?

- A. Least cost
- B. Qualifications only
- C. Sole source
- D. Fixed budget

Answer: B

NEW QUESTION 800

- (Exam Topic 6)

What is one of the main purposes of the project charter?

- A. Formal authorization of the existence of the project
- B. Formal acceptance of the project management plan
- C. Formal approval of the detailed project budget
- D. Formal definition of stakeholder roles and responsibilities

Answer: A

NEW QUESTION 805

- (Exam Topic 6)

Once the make-or-buy analysis is completed, which document defines the project delivery method?

- A. Procurement statement of work (SOW)
- B. Procurement strategy
- C. Terms of reference
- D. Change request

Answer: B

NEW QUESTION 809

- (Exam Topic 6)

Which of the following describes the similarities of the process groups and project life cycle?

- A. The life cycle involves three project management process groups.
- B. Both provide a basic framework to manage the project.
- C. Each project must have a life cycle and all processes in the five process groups.
- D. The project life cycle is managed by executing the processes within the five process groups.

Answer: C

NEW QUESTION 813

- (Exam Topic 6)

With regard to a project manager's sphere of influence in a project, which of the following does the project manager influence most directly?

- A. Suppliers
- B. Customers
- C. Governing bodies
- D. Project team

Answer: D

NEW QUESTION 817

- (Exam Topic 6)

In an adaptive or agile life cycle, how are the customer and sponsor involved in the project scope management activities?

- A. Involvement is needed only during project initiation.
- B. Minimal involvement of stakeholders is sufficient.
- C. They should be continuously engaged.
- D. They should be involved only during phase or deliverable reviews.

Answer: C

NEW QUESTION 820

- (Exam Topic 6)

A new project has been set. Four main stakeholders besides the project manager and four other team members have been identified. How many communication channels are available?

- A. 8
- B. 18
- C. 36
- D. 40

Answer: C

NEW QUESTION 821

- (Exam Topic 6)

Which of the following are outputs from the process of creating a work breakdown structure (WBS)?

- A. Project scope statement and accepted deliverables
- B. Scope baseline and project documents update
- C. Accepted deliverables and enterprise environmental factors
- D. Scope baseline and work performance information

Answer: B

NEW QUESTION 825

- (Exam Topic 6)

Which statement is related to the project manager's sphere of influence at the organizational level?

- A. A project manager interacts with other project managers to detect common interests and impacts between their projects.
- B. A project manager facilitates communication between the suppliers and contractors on the project.
- C. A project manager considers the current industry trends and evaluates how they can impact or be applied to the project.
- D. A project manager may inform other professionals about the value of project management.

Answer: A

NEW QUESTION 830

- (Exam Topic 6)

A project manager is in the process of working with stakeholders to meet their needs and expectations, and identifying and fostering communication and involvement. Which process does this typically represent?

- A. Monitor Stakeholder Engagement
- B. Monitor Communications
- C. Manage Communications
- D. Manage Stakeholder Engagement

Answer: D

NEW QUESTION 834

- (Exam Topic 6)

What is the difference between verified and accepted deliverables?

- A. Accepted deliverables have been completed and checked for correctness; verified deliverables have been formally approved by the customer or authorized stakeholder.
- B. Accepted deliverables have been inspected by the quality team; verified deliverables are outputs from the Validate Scope process.
- C. Accepted deliverables have been formally signed off and approved by the authorized stakeholder; verified deliverables have been completed and checked for correctness.
- D. Accepted deliverables have been formally accepted by the project manager; verified deliverables are the outputs from the Control Quality process.

Answer: D

NEW QUESTION 836

- (Exam Topic 6)

A functional manager is delegating a key project to a project team without a project manager. Which communication method will be most effective?

- A. Interactive
- B. Push
- C. Verbal
- D. Oral

Answer: A

NEW QUESTION 839

- (Exam Topic 6)

A project manager is analyzing a few network diagrams in order to determine the minimum duration of a project. Which diagram should the project manager reference?

- A. A diagram in which resource optimization has been applied.
- B. A diagram in which the critical path method has been applied.
- C. A diagram in which a predefined series of activities has been organized.
- D. A diagram which shows a combination of resource and time optimization.

Answer: B

NEW QUESTION 841

- (Exam Topic 6)

Deciding the phases of a project life cycle would be considered a part of which of these knowledge areas?

- A. Project Schedule Management
- B. Project Scope Management
- C. Project Resource Management
- D. Project Integration Management

Answer: D

NEW QUESTION 844

- (Exam Topic 6)

What should the project manager use to evaluate the politics and power structure among stakeholders inside and outside of the organization?

- A. Expert judgment
- B. Interpersonal skills
- C. Team agreements
- D. Communication skills

Answer: D

NEW QUESTION 846

- (Exam Topic 6)

A project manager has to share a status report with a new stakeholder and is trying to determine the level of detail to include in the report. Which document best details the information the project manager needs to make this decision?

- A. Organizational process assets
- B. Change management plan
- C. Communications management plan
- D. Resource management plan

Answer: C

NEW QUESTION 849

- (Exam Topic 6)

How can a project manager evaluate project team development?

- A. Produce team performance assessments.
- B. Hold weekly meetings to engage every member
- C. Complete a personal skill assessment on each team member
- D. Provide recognition awards to team members

Answer: A

NEW QUESTION 850

- (Exam Topic 6)

Which of these is true of project integration management?

- A. Project Integration Management is mandatory and more effective in larger projects.
- B. Project Integration Management and expert judgment are mutually exclusive.
- C. Project Integration Management is the responsibility of the project manager
- D. Project Integration Management excludes the triple constraints if cost performance index (CPI) equals zero.

Answer: D

NEW QUESTION 851

- (Exam Topic 6)

A project manager is experiencing a project with a high degree of change. Which type of stakeholder engagement does this project require?

- A. Discussing with management
- B. Escalating to the sponsors
- C. Engaging regularly with stakeholders
- D. Engaging only with decision makers

Answer: C

NEW QUESTION 856

- (Exam Topic 6)

Which is the best way for a project manager to ensure efficient and frequent communication with management and stakeholders in an agile/adaptive environment?

- A. Post project artifacts in a transparent fashion and engage stakeholders on a regular basis.
- B. Make surveys among the stakeholders and meet with the team once a month.
- C. Create a social network and post news there.
- D. Create personalized emails for each stakeholder, asking for requests and reviewing objectives with them periodically.

Answer: A

NEW QUESTION 860

- (Exam Topic 6)

A sponsor asks a project manager to provide a project's expected total costs based on its progress. What formula should the project manager use to determine this?

- A. Earned value (EV) / actual cost (AC)
- B. Estimate at completion (EAC) - AC
- C. Budget at completion (BAC) / cost performance index (CPI)
- D. EV - planned value (PV)

Answer: B

NEW QUESTION 861

- (Exam Topic 6)

What can increase the complexity of the Manage Stakeholder Engagement process?

- A. The project must be of high quality.
- B. The stakeholders are from different countries.
- C. The project must comply with strict local government regulations.
- D. The project has a tight budget and timeline.

Answer: B

NEW QUESTION 862

- (Exam Topic 6)

Which role does the project manager resemble best?

- A. Orchestra conductor
- B. Facilities supervisor
- C. Functional manager
- D. School principal

Answer: A

NEW QUESTION 866

- (Exam Topic 6)

Which is a list of organizational systems that may have an impact on a project?

- A. Internal policies, company procedures, and organizational resources
- B. Company culture, purchasing system, and project management information system
- C. Organizational structure, governance framework, and management elements
- D. Organizational process assets, enterprise environmental factors, and corporate knowledge

Answer: D

NEW QUESTION 871

- (Exam Topic 6)

Which task will a project manager undertake while conducting Project Resource Management?

- A. Identify the different aspects of the team to manage and control physical resources efficiently.
- B. Procure equipment, materials, facilities, and infrastructure for the project.
- C. Train the team members in project skill sets.
- D. Define the roles and responsibilities of each team member.

Answer: A

NEW QUESTION 873

- (Exam Topic 6)

In which organizational structure would the project manager have most authority?

- A. Matrix-weak
- B. Matrix-balanced

- C. Matrix-strong
- D. Organic or simple

Answer: C

NEW QUESTION 875

- (Exam Topic 6)

Which of the following lists represents the outputs of the Monitor Communications process?

- A. Project communications, project management plan updates, project documents updates, and organizational process assets updates
- B. Work performance information, change requests, project management plan updates, and project documents updates
- C. Communications management plan, project management plan updates, work performance report, and project documents update
- D. Stakeholder engagement plan, change requests, project management plan updates, and project documents updates

Answer: B

NEW QUESTION 878

- (Exam Topic 6)

A project is in progress and about to move to a different phase, according to the plan. This will be a good opportunity for the project manager to:

- A. create the project management plan.
- B. identify the project objectives.
- C. review and update stakeholder engagement.
- D. create the schedule baseline.

Answer: C

NEW QUESTION 883

- (Exam Topic 6)

The project manager is creating the communications management plan Which group of inputs is required to begin?

- A. Work performance reports, change requests, and risk register
- B. Work performance data, project documents, and stakeholder engagement plan
- C. Project charter, project management plan, and project documents
- D. Work performance data, stakeholder register, and team management plan

Answer: C

NEW QUESTION 888

- (Exam Topic 6)

What is a tailoring consideration in Project Integration Management?

- A. Validation and control
- B. Benefits
- C. Technology support
- D. Physical location

Answer: A

NEW QUESTION 892

- (Exam Topic 6)

Which is the order of steps in the Procurement Management process?

- A. Identifying and planning procurement requirements, obtaining quotes or proposals, negotiating with vendors, contracting with selected vendors, and controlling procurements
- B. Identifying and planning procurement requirements, negotiating with vendors, contracting with selected vendors, obtaining quotes or proposals, and controlling procurements
- C. Controlling procurements, identifying and planning procurement requirements, obtaining quotes or proposals, negotiating with vendors, and contracting with selected vendors
- D. Obtaining quotes or proposals, identifying and planning procurement requirements, negotiating with vendors, contracting with selected vendors, and controlling procurements

Answer: A

NEW QUESTION 895

- (Exam Topic 6)

How can a project manager determine if the project activities comply with organizational and project policies, processes, and procedures?

- A. Look at the quality metrics.
- B. Validate the scope.
- C. Review the quality checklist.
- D. Conduct a quality audit.

Answer: D

NEW QUESTION 898

- (Exam Topic 6)

Which of the following are components of the technical project management skill?

- A. Ability to explain business aspects of the project, business strategy, goals and objectives, and business value.
- B. Ability to deal with people, to be collaborative, and to apply persuasion and negotiation.
- C. Ability to focus on relationships with people, inspire trust, and implement decisions and actions that support the business strategy.
- D. Ability to plan and prioritize, gather the right artifacts available for each project, and focus on critical success factors.

Answer: D

NEW QUESTION 901

- (Exam Topic 6)

Which is an example of leveraging evolving trends and emerging practices in Project Integration Management?

- A. Hybrid methodologies
- B. Risk register updates
- C. Outsourced project resources
- D. Reliance on lessons learned documents

Answer: A

NEW QUESTION 903

- (Exam Topic 6)

Under which circumstances should multiple projects be grouped in a program?

- A. When they are needed to accomplish a set of goals and objectives for an organization
- B. When they have the same project manager and the same organizational unit
- C. When they have the same scope, budget, and schedule
- D. When they are from the same unit of the organization

Answer: A

NEW QUESTION 904

- (Exam Topic 6)

The project manager is using co-location and providing training to the project team. On which of the following Project Resource Management processes is the project manager working?

- A. Acquire Resources
- B. Control Resources
- C. Manage Team
- D. Develop Team

Answer: D

NEW QUESTION 908

- (Exam Topic 6)

What is the first step in the Stakeholder Management process?

- A. Plan Stakeholder Engagement
- B. Identify Stakeholders
- C. Manage Stakeholder Responsibility
- D. Monitor Stakeholder Activity

Answer: B

NEW QUESTION 913

- (Exam Topic 6)

When managing costs in an agile environment, what should a project manager consider?

- A. Lightweight estimation methods can be used as changes arise.
- B. Agile environments make cost aggregation more difficult.
- C. Agile environments make projects more costly and uncertain.
- D. Detailed cost calculations benefit from frequent changes.

Answer: A

NEW QUESTION 914

- (Exam Topic 6)

The project manager is dividing the project scope into smaller pieces, and repeating this process until no more subdivisions are required. At this point the project manager is able to estimate costs and activities for each element. What are these elements called?

- A. Project activities
- B. Work packages
- C. Planning packages
- D. Project deliverables

Answer: B

NEW QUESTION 917

- (Exam Topic 6)

Which of the following technology platforms is most effective for sharing information when managing virtual project teams?

- A. Video conferencing
- B. Audio conferencing
- C. Shared portal
- D. Email/chat

Answer: D

NEW QUESTION 919

- (Exam Topic 6)

An important project stakeholder has low risk tolerance. Which type of communication should a project manager use to provide this stakeholder with a difficult update?

- A. Informal conversation
- B. Face-to-face meeting
- C. Short email update
- D. Written report

Answer: A

NEW QUESTION 923

- (Exam Topic 6)

Project reporting is a tool that is most closely associated with which process?

- A. Communicate Plan
- B. Manage Communications
- C. Report Performance
- D. Control Communications

Answer: B

NEW QUESTION 924

- (Exam Topic 6)

A project manager is monitoring and recording results of executing the quality management activities to assess performance and ensure the project outputs are complete, correct, and meet customer expectations. Which output is the project manager using?

- A. Approved change requests
- B. Verified deliverables
- C. Lessons learned
- D. Work performance data

Answer: B

NEW QUESTION 929

- (Exam Topic 6)

The primary purpose of the stakeholder register is to:

- A. Record stakeholder issues on the project
- B. Maintain lessons learned earlier in the project
- C. Maintain a list of all project stakeholders
- D. Document change requests and their status

Answer: C

NEW QUESTION 933

- (Exam Topic 6)

In which sphere of influence is the project manager demonstrating the value of project management and advancing the efficacy of the project management office (PMO)?

- A. The organization
- B. The project
- C. The industry
- D. The product

Answer: B

NEW QUESTION 934

- (Exam Topic 6)

The project manager and the project team are having a meeting with the purpose of identifying risks. Which tools and techniques might help in this process?

- A. Prompt lists and data analysis
- B. Reports and representations of uncertainty
- C. Data analysis and risk audits
- D. Interpersonal and team skills and project management Information system

Answer: A

NEW QUESTION 938

- (Exam Topic 6)

What is a tool or technique used in the Control Quality process?

- A. Attribute sampling
- B. Parametric estimating
- C. Statistical sampling
- D. Expert judgment

Answer: A

NEW QUESTION 941

- (Exam Topic 6)

A project is just beginning, and management creates a long list of potential stakeholders. Which statement about identifying and engaging stakeholders is correct?

- A. The project manager should identify and deal with stakeholders only during the execution phase.
- B. Stakeholder satisfaction should be identified immediately and managed as a project objective.
- C. The project manager should focus on project objectives and deal with stakeholders as a secondary priority.
- D. Stakeholder satisfaction is the most important goal, and project objectives should be considered a secondary priority.

Answer: B

NEW QUESTION 942

- (Exam Topic 6)

Which statement about identification and engagement of stakeholders during a project is correct?

- A. Project stakeholders should be Identified and engaged in every phase of the project to influence the success of the project directly.
- B. Project stakeholders should be identified and engaged once the prototype is completed to provide their feedback but refrain from making inputs during the project.
- C. Project stakeholders should be identified when the project charter is being completed and engaged during requirements gathering.
- D. Project stakeholders should be identified and engaged during requirements elicitation but not during the Define Scope process.

Answer: A

NEW QUESTION 946

- (Exam Topic 6)

What does an S-curve from a Monte Carlo analysis show?

- A. Cumulative probability distribution representing probability of achieving a particular outcome
- B. Individual project risks or uncertainties that have the most potential impact on outcome
- C. Best alternative out of the possible solutions, incorporating associated risks and opportunities
- D. Diagram for all project uncertainties and their influence over a period of time

Answer: A

NEW QUESTION 950

- (Exam Topic 6)

In order to detect quality Issues earlier in the project life cycle, the project manager is using an agile/adaptive environment. What is the main difference between waterfall and agile/adaptive development approaches for Project Quality Management?

- A. The frequency of the quality and review steps
- B. The number of deliverables
- C. The duration of each of the quality and review steps
- D. The tools used in the quality and review steps

Answer: A

NEW QUESTION 952

- (Exam Topic 6)

In an agile and adaptive project, which scope management entity invokes stakeholder engagement?

- A. Collect Requirements
- B. Create work breakdown structure (WBS)
- C. Plan Scope Management
- D. Scope Baseline

Answer: A

NEW QUESTION 955

.....

Thank You for Trying Our Product

We offer two products:

1st - We have Practice Tests Software with Actual Exam Questions

2nd - Questions and Answers in PDF Format

CAPM Practice Exam Features:

- * CAPM Questions and Answers Updated Frequently
- * CAPM Practice Questions Verified by Expert Senior Certified Staff
- * CAPM Most Realistic Questions that Guarantee you a Pass on Your First Try
- * CAPM Practice Test Questions in Multiple Choice Formats and Updates for 1 Year

100% Actual & Verified — Instant Download, Please Click
[Order The CAPM Practice Test Here](#)