

Microsoft

Exam Questions AZ-801

Configuring Windows Server Hybrid Advanced Services



NEW QUESTION 1

- (Exam Topic 3)

You have 50 on-premises servers that run Windows Server. You have an Azure subscription that contains 50 virtual machines that run Windows Server. You need to create an Azure Monitor alert that will be triggered if one of the servers or virtual machines has less than 10 percent available disk space. What should you do first?

- A. Create an Alert Rule
- B. Install the Azure Monitor agent on each server.
- C. Enable System Insights on each server.
- D. Create a Log Analytics workspace and configure the Agent management settings.

Answer: A

Explanation:

<https://learn.microsoft.com/en-us/answers/questions/165893/help-to-set-up-azure-alert-for-disk-space-alert-wh.h>

NEW QUESTION 2

- (Exam Topic 3)

Your network contains an Active Directory Domain Services (AD DS) domain that has the Active Directory Recycle Bin enabled. The domain contains two domain controllers named DC1 and DC2. The system state of the domain controllers is backed up daily at 23:00 by using Windows Server Backup.

You have an organizational unit (OU) named ParisUsers that contains 1,000 users.

At 08:00, DC1 shuts down for hardware maintenance. The maintenance completes, but DC1 remains shut down.

At 09:00, an administrative error causes the manager attribute of each user in ParisUsers to be deleted. You need to recover the user account details as quickly as possible. The solution must minimize data loss.

Which three actions should you perform in sequence? To answer, move the appropriate actions from the list of actions to the answer area and arrange them in the correct order.

Actions

- Start DC1 normally.
- Perform an authoritative restore on DC1.
- Recover all the user objects in the Active Directory Recycle Bin.
- Start DC1 by using the Last Known Good Configuration.
- Start DC1 in Directory Services Restore Mode.
- Perform a system state restore on DC1.

Answer Area

- A. Mastered
- B. Not Mastered

Answer: A

Explanation:

Text, table Description automatically generated with medium confidence

NEW QUESTION 3

- (Exam Topic 3)

You have a failover cluster named Cluster1 that has the following configurations:

- > Number of nodes: 6
- > Quorum: Dynamic quorum
- > Witness: File share, Dynamic witness

What is the maximum number of nodes that can fail simultaneously while maintaining quorum?

- A. 1
- B. 2
- C. 3
- D. 4
- E. 5

Answer: C

Explanation:

Note this question is asking about nodes failing ‘simultaneously’, not nodes failing one after the other.

With six nodes and one witness, there are seven votes. To maintain quorum there needs to be four votes available (four votes is the majority of seven). This means that a minimum of three nodes plus the witness need to remain online for the cluster to function. Therefore, the maximum number of simultaneous failures is three.

Reference:
<https://docs.microsoft.com/en-us/windows-server/storage/storage-spaces/understand-quorum>

NEW QUESTION 4

- (Exam Topic 3)
You have two file servers named Server1 and Server2 that run Windows Server. Server1 contains a shared folder named Data. Data contains 10 TB of data. You plan to decommission Server1.
You need to migrate the files from Data to a new shared folder on Server2. The solution must meet the following requirements:

- Ensure that share, file, and folder permissions are copied.
- After the initial copy occurs, ensure that changes in \\Server1\Data can be synced to the destination without initiating a full copy.
- Minimize administrative effort.

What should you use?

- A. xcopy
- B. Storage Replica
- C. Storage Migration Service
- D. azcopy

Answer: C

Explanation:
Reference:
<https://docs.microsoft.com/en-us/windows-server/storage/storage-migration-service/overview#why-use-storage>

NEW QUESTION 5

- (Exam Topic 3)
You have an Azure virtual machine named VM1 that runs Windows Server.
When you attempt to install the Azure Performance Diagnostics extension on VM I, the installation fails. You need to identify the cause of the installation failure. What are two possible ways to achieve the goal? Each correct answer presents a complete solution. NOTE: Each correct selection is worth one point.

- A. Sign in to VM1 and verify the WaAppAgentlog file.
- B. From the Azure portal, view the alerts for VM1.
- C. From the Azure portal, view the activity log for VM1.
- D. Sign into VM1 and verify the MonitoringAgentlog file.

Answer: AB

NEW QUESTION 6

- (Exam Topic 3)
Your network contains an Active Directory Domain Services (AD DS) domain named contoso.com. The domain contains the organizational units (OUs) shown in the following table.

Name	Contents
Domain Controllers	All the domain controllers in the domain
Domain Servers	All the servers that run Windows Server in the domain
Domain Client Computers	All the client computers that run Windows 10 in the domain
Domain Users	All the users in the domain

In the domain, you create the Group Policy Objects (GPOs) shown in the following table.

Name	IPsec setting
GPO1	Require authentication by using Kerberos V5 for inbound connections
GPO2	Request authentication by using Kerberos V5 for inbound connections
GPO3	Require authentication by using X.509 certificates for inbound connections
GPO4	Request authentication by using X.509 certificates for inbound connections

You need to implement IPsec authentication to ensure that only authenticated computer accounts can connect to the members in the domain. The solution must minimize administrative effort.
Which GPOs should you apply to the Domain Controllers OU and the Domain Servers OU? To answer, select the appropriate options in the answer area.
NOTE: Each correct selection is worth one point.

Answer Area

Domain Controllers:

GPO1

GPO2

GPO3

GPO4

Domain Servers:

GPO1

GPO2

GPO3

GPO4

- A. Mastered
- B. Not Mastered

Answer: A

Explanation:

Table Description automatically generated

Reference:

<https://docs.microsoft.com/en-us/windows/security/threat-protection/windows-firewall/configure-authentication->

NEW QUESTION 7

- (Exam Topic 3)

Your network contains an Active Directory Domain Services (AD DS) domain. The domain contains 20 Active Directory sites. All user management is performed from a central site.

You add users to a group.

You discover that group changes do NOT appear on a domain controller in a remote site. You need to identify whether the group changes appear on other domain controllers. What should you use?

- A. Microsoft Support and Recovery Assistant
- B. File Replication Service (FRS) Status Viewer
- C. Active Directory Replication Status Tool
- D. Active Directory Sites and Services

Answer: D

NEW QUESTION 8

- (Exam Topic 3)

Your network contains an Active Directory Domain Services (AD DS) domain. The domain contains three servers named Server1, Server2, and Server3 that run Windows Server. All the servers are on the same network and have network connectivity.

On Server1, Windows Defender Firewall has a connection security rule that has the following settings:

- Rule Type: Server-to-server
- Endpoint 1: Any IP address
- Endpoint 2: Any IP address
- Requirements: Require authentication for inbound connections and request authentication for outbound connections
- Authentication Method: Computer (Kerberos V5)
- Profile: Domain, Private, Public
- Name: Rule1

For each of the following statements, select Yes if the statement is true. Otherwise, select No. NOTE: Each correct selection is worth one point.

Answer Area

Statements	Yes	No
When Server1 establishes a network connection with Server2, the connection is encrypted.	<input type="radio"/>	<input type="radio"/>
Server2 can establish a network connection with Server3.	<input type="radio"/>	<input type="radio"/>
When Server3 establishes a network connection with Server1, the connection is encrypted.	<input type="radio"/>	<input type="radio"/>

- A. Mastered
- B. Not Mastered

Answer: A

Explanation:

Answer Area

Statements	Yes	No
When Server1 establishes a network connection with Server2, the connection is encrypted.	<input type="radio"/>	<input checked="" type="radio"/>
Server2 can establish a network connection with Server3.	<input checked="" type="radio"/>	<input type="radio"/>
When Server3 establishes a network connection with Server1, the connection is encrypted.	<input type="radio"/>	<input checked="" type="radio"/>

NEW QUESTION 9

- (Exam Topic 3)

You have five Azure virtual machines. You have a dedicated Azure Storage account to collect performance data. You need to send the collected data directly to the Azure Storage account. What should you install on the virtual machines?

- A. the Telegraf agent
- B. the Azure Monitor agent
- C. the Dependency agent
- D. the Azure Diagnostics extension
- E. the Azure Connected Machine agent

Answer: D

NEW QUESTION 10

- (Exam Topic 3)

You have three Azure virtual machines named VM1, VM2, and VM3 that host a multitier application. You plan to implement Azure Site Recovery. You need to ensure that VM1, VM2, and VM3 fail over as a group. What should you configure?

- A. an availability zone
- B. a recovery plan
- C. an availability set

Answer: B

Explanation:

Reference:

<https://docs.microsoft.com/en-us/azure/site-recovery/site-recovery-overview>

NEW QUESTION 10

- (Exam Topic 3)

You have two physical servers named AppSrv1 and AppSrv2 and an unconfigured server named Server1. All the servers run Windows Server. Only Server1 can access the internet.

You plan to use Azure Site Recovery to replicate AppSrv1 and AppSrv2 to Azure. You need to deploy the required components to AppSrv1, AppSrv2, and Server1.

Which components should you deploy? To answer, drag the appropriate components to the correct servers. Each component may be used once, more than once, or not at all. You may need to drag the split bar between panes or scroll to view content.

NOTE: Each correct selection is worth one point.

Components	Answer Area
The Azure Connected Machine agent	To AppSrv1 and AppSrv2: <input type="text"/>
An Azure Site Recovery configuration server	
The Azure Site Recovery Mobility Service	To Server1: <input type="text"/>
The Microsoft Azure Recovery Services (MARS) agent	

- A. Mastered
- B. Not Mastered

Answer: A

Explanation:

Graphical user interface, text, application Description automatically generated

Reference:

<https://docs.microsoft.com/en-us/azure/site-recovery/physical-azure-architecture> <https://docs.microsoft.com/en-us/azure/site-recovery/physical-azure-set-up-source>

NEW QUESTION 12

- (Exam Topic 3)

You have an Azure Active Directory Domain Services (Azure AD DS) domain named aadds.contoso.com. You have an Azure virtual network named Vnet1. Vnet1 contains two virtual machines named VM1 and VM2 that run Windows Server. VM1 and VM2 are joined to aadds.contoso.com.

You create a new Azure virtual network named Vnet2. You add a new server named VM3 to Vnet2. When you attempt to join VM3 to aadds.contoso.com, you get an error message that the domain cannot be found.

You need to ensure that you can join VM3 to aadds.contoso.com.

Answer Area

Network configuration:

- Add a subnet to Vnet1.
- Add a subnet to Vnet2.
- Add a private endpoint to Vnet2.
- Configure virtual network peering between Vnet1 and Vnet2.

DNS configuration:

- Add a custom DNS server to Vnet1.
- Add a custom DNS server to Vnet2.
- Create an Azure private DNS zone named aadds.contoso.com.
- Add a virtual network link to an existing Azure private DNS zone.

- A. Mastered
- B. Not Mastered

Answer: A

Explanation:
 Answer Area

Network configuration:

- Add a subnet to Vnet1.
- Add a subnet to Vnet2.
- Add a private endpoint to Vnet2.
- Configure virtual network peering between Vnet1 and Vnet2.

DNS configuration:

- Add a custom DNS server to Vnet1.
- Add a custom DNS server to Vnet2.
- Create an Azure private DNS zone named aadds.contoso.com.
- Add a virtual network link to an existing Azure private DNS zone.

NEW QUESTION 17

- (Exam Topic 3)

You deploy Azure Migrate to an on-premises network.

You have an on-premises physical server named Server1 that runs Windows Server and has the following configuration.

Operating system disk 600 GB

Data disc 3 TB

NIC Teaming: Enabled Mobility service: installed Windows Firewall: Enabled

Microsoft Defender Antivirus: Enabled

You need to ensure that you can use Azure Migrate to migrate Server1. Solution: You disable Microsoft Defender Antivirus on Server1.

Does this meet the goal?

- A. Yes
- B. No

Answer: B

NEW QUESTION 20

- (Exam Topic 3)

You have an Azure virtual machine named VM1. Crash dumps for a process named Process1 are enabled for VM1.

When process1.exe on VM1 crashes, a technician must access the memory dump files on the virtual machine. The technician must be prevented from accessing the virtual machine.

To what should you provide the technician access?

- A. an Azure file share
- B. an Azure Log Analytics workspace
- C. an Azure Blob Storage container
- D. a managed disk

Answer: C

Explanation:

Reference:

<https://docs.microsoft.com/en-us/azure/azure-monitor/agents/diagnostics-extension-overview>

NEW QUESTION 22

- (Exam Topic 3)

You have a failover cluster named Cluster1 that contains three nodes.

You plan to add two file server cluster roles named File1 and File2 to Cluster1. File1 will use the File Server for general use role. File2 will use the Scale-Out File Server for application data role.

What is the maximum number of nodes for File1 and File2 that can concurrently serve client connections? To answer, select the appropriate options in the answer area.

NOTE: Each correct selection is worth one point.

File1:

1
2
3

File2:

1
2
3

- A. Mastered
- B. Not Mastered

Answer: A

Explanation:

Graphical user interface, application Description automatically generated

Reference:

<https://docs.microsoft.com/en-us/windows-server/failover-clustering/sofs-overview>

NEW QUESTION 26

- (Exam Topic 3)

You have 10 servers that run Windows Server in a workgroup.

You need to configure the servers to encrypt all the network traffic between the servers. The solution must be as secure as possible.

Which authentication method should you configure in a connection security rule?

- A. NTLMv2
- B. pre-shared key
- C. KerberosV5
- D. computer certificate

Answer: D

Explanation:

Reference:

<https://docs.microsoft.com/en-us/windows/security/threat-protection/windows-firewall/create-an-authentication>

NEW QUESTION 29

- (Exam Topic 3)

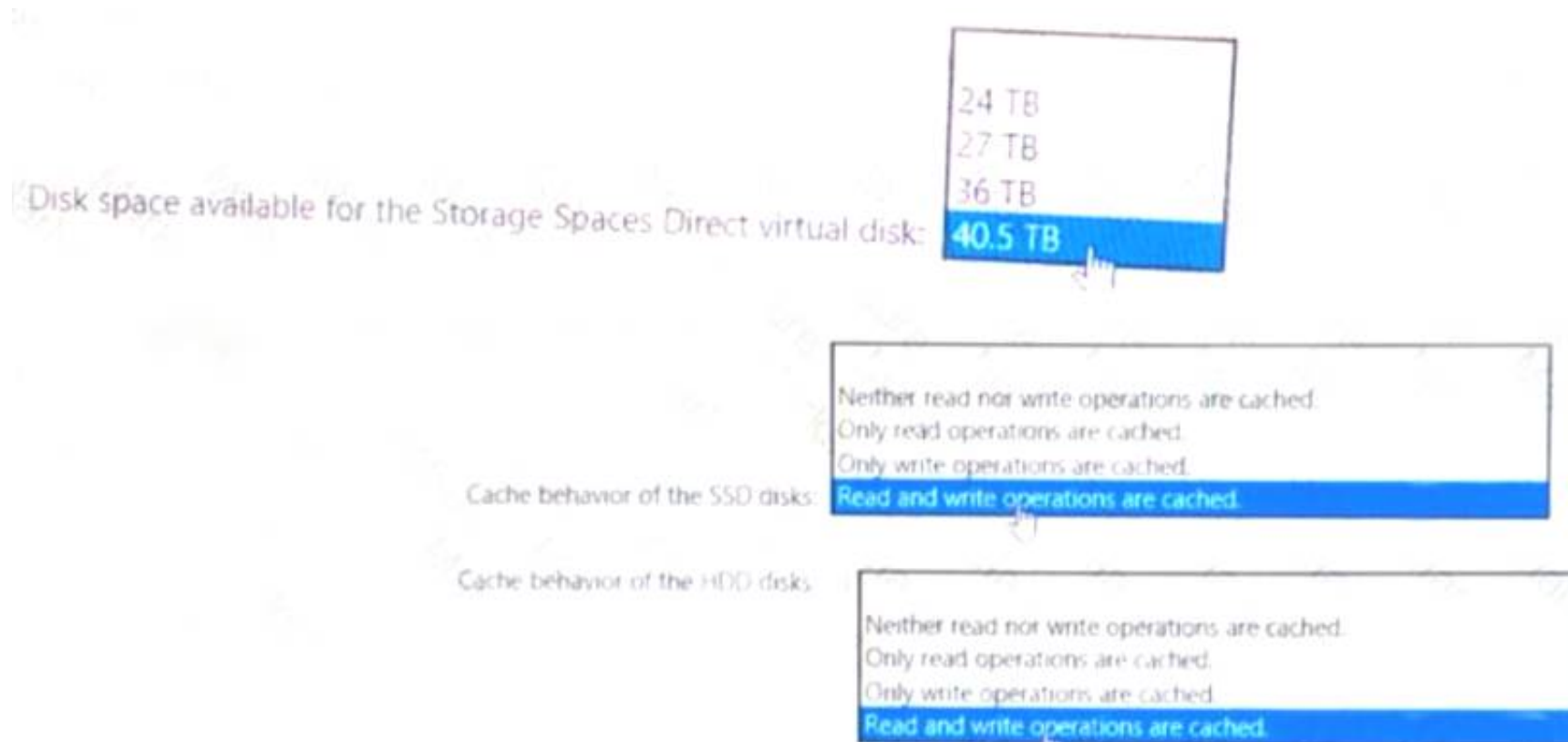
You have a failover cluster named Cluster1 that contains three Windows Server nodes named Node 1, Node2. and Node3.

You need to deploy a Storage Spaces Direct virtual disk to Cluster1. You add the following disks to each node:

- Three 512-6B NVMe disks
- Three 3-TB diskS
- Three 1-TB SSD disks

On Cluster1. you enable Storage Spaces Direct and add the new disks.

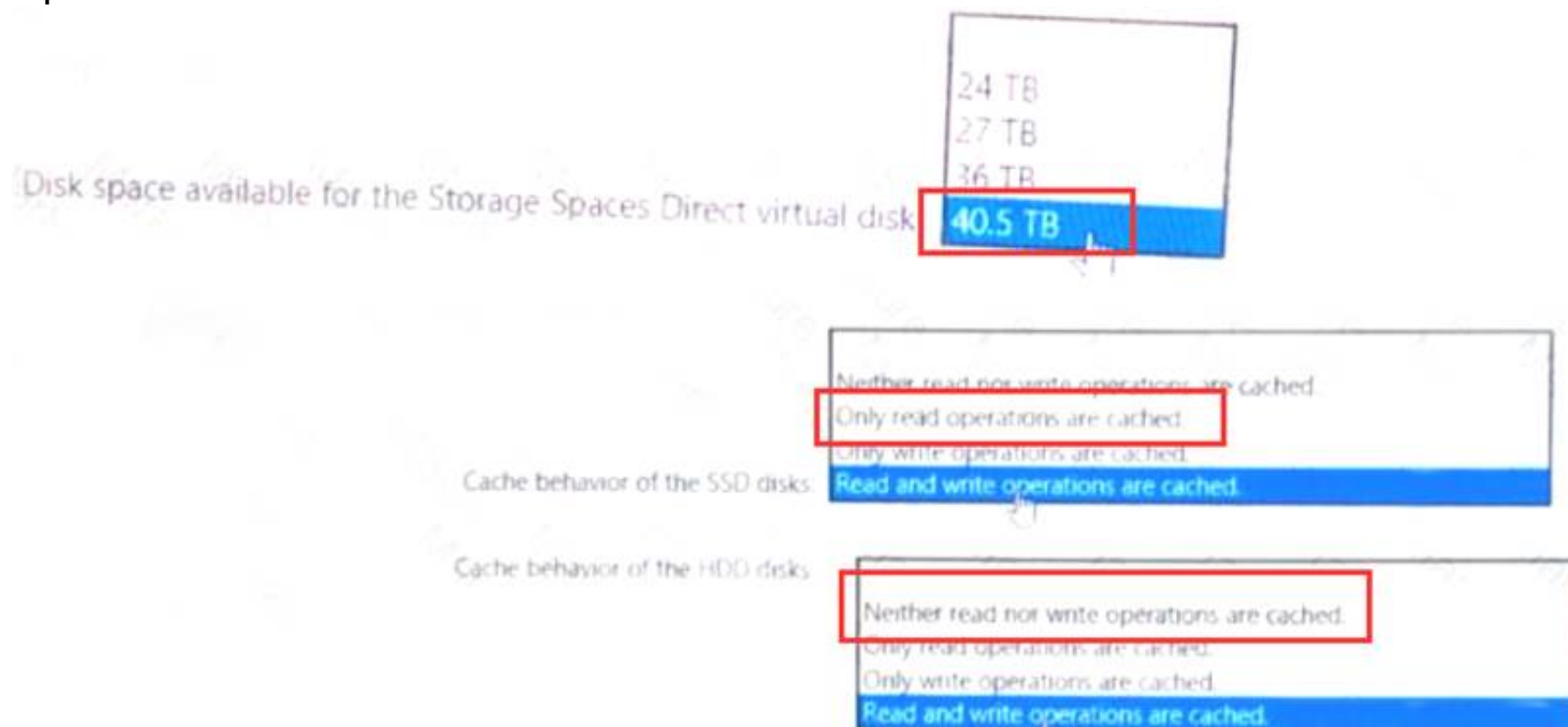
What is the total amount of disk space available for the Storage Spaces Direct virtual disk, and which operations are cached for the SSD and HDD disks? To answer, select the appropriate options in the answer area.



- A. Mastered
- B. Not Mastered

Answer: A

Explanation:



NEW QUESTION 33

- (Exam Topic 3)

Your network contains an Active Directory Domain Services (AD DS) domain that has the Active Directory Recycle Bin enabled. All domain controllers are backed up daily.

You accidentally remove all the users from a domain group.

You need to get a list of the users that were previously in the group.

Which four actions should you perform in sequence from a domain controller? To answer, move the appropriate actions from the list of actions to the answer area and arrange them in the correct order.

Action	Answer Area
Mount Active Directory to port 51389.	
View the membership of the group.	
Restore the system state to an alternate location.	
From the Deleted Objects container in Active Directory Administrative Center, run the Restore task.	
From Active Directory Users and Computers, change the domain controller to localhost:51389.	
Restore the group from the Active Directory Recycle Bin.	

- A. Mastered
- B. Not Mastered

Answer: A

Explanation:

Graphical user interface, text, table Description automatically generated with medium confidence

Reference:

<http://sysadmindoc.blogspot.com/2018/10/mount-active-directory-database-from.html>

NEW QUESTION 38

- (Exam Topic 3)

Your network contains an Active Directory Domain Services (AD DS) domain All domain members have Microsoft Defender Credential Guard with UEFI tock configured in the domain you deploy a server named Server1 that runs Windows Server. You disable Credential Guard on Server1. You need to ensure that Server1 is MOST subject to Credential Guard restrictions. What should you do next?

- A. Run the Device Guard and Credential Guard hardware readiness tool
- B. Disable the Turn on Virtual nation Based Security group policy setting
- C. Run dism and specify the /Disable-Feature and /FeatureName:IsolatedUserMode parameters

Answer: B

NEW QUESTION 40

- (Exam Topic 3)

Your company uses Storage Spaces Direct.

You need to view the available storage in a Storage Space Direct storage pool. What should you use?

- A. File Server Resource Manager (FSRM)
- B. the Get-StorageSubsystem cmdlet
- C. Disk Management
- D. Windows Admin Center

Answer: D

NEW QUESTION 45

- (Exam Topic 3)

You have a Site-to-Site VPN between an on-premises network and an Azure VPN gateway. BGP is disabled for the Site-to-Site VPN.

You have an Azure virtual network named Vnet1 that contains a subnet named Subnet1. Subnet1 contains a virtual machine named Server1.

You can connect to Server1 from the on-premises network.

You extend the address space of Vnet1. You add a subnet named Subnet2 to Vnet1. Subnet2 uses the extended address space. You deploy an Azure virtual machine named Server2 to Subnet2.

You cannot connect to Server2 from the on-premises network. Server1 can connect to Server2. You need to ensure that you can connect to Subnet2 from the on-premises network.

What should you do?

- A. Add an additional Site-to-Site VPN between the on-premises network and Vnet1.
- B. Add a private endpoint to Subnet2.
- C. To Subnet2. add a route table that contains a user-defined route.
- D. Update the routing information on the on-premises routers.

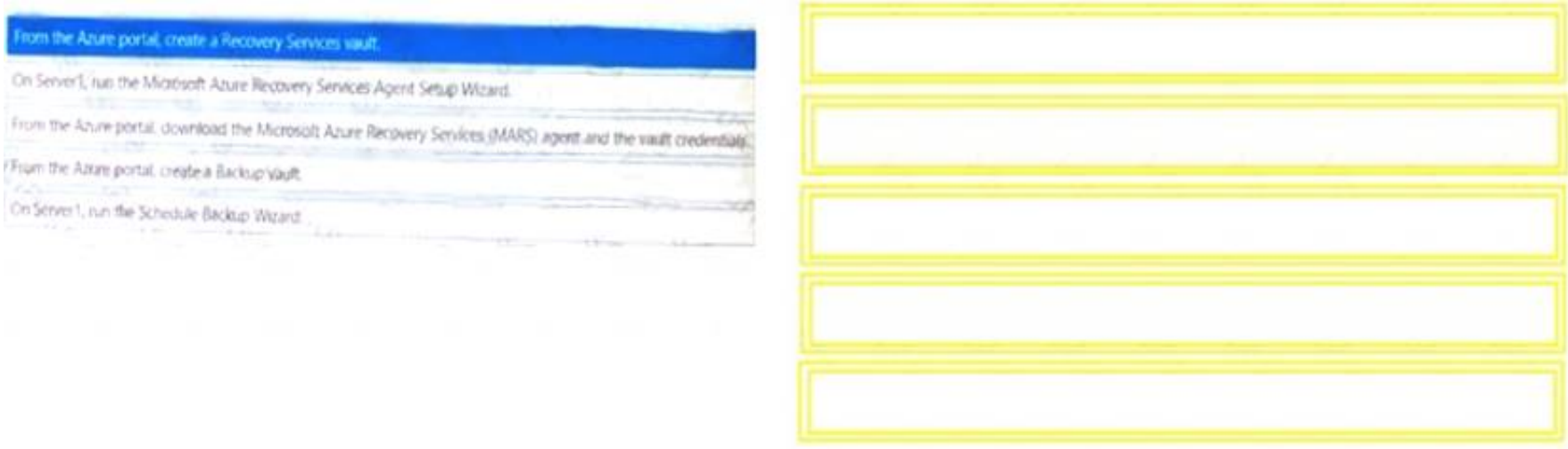
Answer: D

NEW QUESTION 50

- (Exam Topic 3)

You have an on-premises server named Server1 that runs Windows Server. You need to perform an on-demand backup of the files on Server 1 by using Azure Backup.

Which five actions should you perform in sequence? To answer, move the appropriate actions actions from the list of actions to the answer are and arrange them in the correct order.



- A. Mastered
- B. Not Mastered

Answer: A

Explanation:
A picture containing text Description automatically generated

NEW QUESTION 54

- (Exam Topic 3)
You have a failover cluster named FC1 that contains two nodes named Server1 and Server2. FC1 is configured to use a file share witness.
You plan to configure FC1 to use a cloud witness.
You need to configure Azure Storage accounts for the cloud witness.
Which storage account type and authorization method should you configure? To answer, select the appropriate options in the answer area.
NOTE: Each correct selection is worth one point.

Answer Area

Storage account type:

Premium block blobs
Premium file shares
Premium page blobs
Standard

Authentication method:

Access key
Shared access signature (SAS)
System-assigned managed identity in Azure Active Directory (Azure AD)
User-assigned managed identity in Azure Active Directory (Azure AD)

- A. Mastered
- B. Not Mastered

Answer: A

Explanation:
Graphical user interface, text Description automatically generated with medium confidence
Reference:
<https://docs.microsoft.com/en-us/windows-server/failover-clustering/deploy-cloud-witness>

NEW QUESTION 55

- (Exam Topic 3)
You have a Hyper-V failover cluster named Cluster1 that uses a cloud witness. Cluster1 hosts a virtual machine named VM1 that runs Windows Server.
You need to fail over VM1 automatically to a different node when a service named Service1 on VM1 fails. What should you do on Cluster1 and VM1? To answer, select the appropriate options in the answer area. NOTE: Each correct selection is worth one point.

Cluster1:

Modify the settings of the VM1 cluster role.
Configure monitoring of the VM1 cluster role.
Change the startup priority of the VM1 cluster role.

VM1:

Configure the Startup Type of Service1.
Configure the Recovery settings of Service1.
Configure the Startup and Recovery settings.
Install and configure the Azure Monitor agent.

- A. Mastered
- B. Not Mastered

Answer: A

Explanation:

Text, table Description automatically generated

NEW QUESTION 59

- (Exam Topic 3)

You have a Storage Spaces Direct configuration that has persistent memory and contains the data volumes shown in the following table.

Name	File system
Volume1	NTFS
Volume2	ReFS

You plan to add data volumes to Storage Spaces Direct as shown in the following table.

Name	File system
Volume3	NTFS
Volume4	ReFS

On which volumes can you use direct access (DAX)?

- A. Volume3 only
- B. Volume4 only
- C. Volume1 and Volume3 only
- D. Volume2 and Volume4 only
- E. Volume3 and Volume4 only

Answer: A

Explanation:

DAX can only be used on one volume and the volume has to be NTFS. You could configure DAX on Volume1 (although that would require reformatting the volume) or Volume3. However, 'Volume1 only' isn't an answer option so Volume3 is the correct answer.

'Volume1 and Volume3' is incorrect because of the single volume limitation. Reference:

<https://docs.microsoft.com/en-us/windows-server/storage/storage-spaces/persistent-memory-direct-access>

NEW QUESTION 61

- (Exam Topic 3)

Note: This question is part of a series of questions that present the same scenario. Each question in the series contains a unique solution that might meet the stated goals. Some question sets might have more than one correct solution, while others might not have a correct solution.

After you answer a question in this section, you will NOT be able to return to it. As a result, these questions will not appear in the review screen.

Your network contains a single-domain Active Directory Domain Services (AD DS) forest named contoso.com. The functional level of the forest is Windows Server 2012 R2. All domain controllers run Windows Server 2012 R2.

Sysvol replicates by using the File Replication Service (FRS).

You plan to replace the existing domain controllers with new domain controllers that will run Windows Server 2022.

You need to ensure that you can add the first domain controller that runs Windows Server 2022. Solution: You migrate sysvol from FRS to Distributed File System (DFS) Replication.

Does this meet the goal?

- A. Yes
- B. No

Answer: A

Explanation:

Reference:

<https://www.rebeladmin.com/2021/09/step-by-step-guide-active-directory-migration-from-windows-server-2008>

NEW QUESTION 62

- (Exam Topic 3)

Your network contains an Active Directory Domain Services (AD DS) domain. The domain contains the servers shown in the following table.

Name	Operating system	Server role
Server1	Windows Server 2019	DHCP Server
Server2	Windows Server 2022	DHCP Server
Server3	Windows Server 2019	File Server

Server3 contains a share named Share1.
On Server1, DHCP has the following configurations:
Conflict detection attempts: 3
An IPv4 scope named Scope1 that has the following settings:
* 1.Address Pool: 172.16.10.100 - 172.16.10.130
* 2. Address Leases:
- 172.16.10.100 computer1.contoso.com
- 172.16.10.101 computer2.contoso.com
Reservations: 172.16.10.101 computer2.contoso.com Policies: Policy1
You perform the following actions:

> On Server1, you run
Export-DhcpServer -File \\Server3\Share1\File1.xml.
> On Server2, you run
Import-DhcpServer -File \\Server3\Share1\File1.xml
-BackupPath \\Server3\Share1.

For each of the following statements, select Yes if the statement is true. Otherwise, select No. NOTE: Each correct selection is worth one point.

Answer Area

Statements	Yes	No
On Server2, Conflict detection attempts is set to 3.	<input type="radio"/>	<input type="radio"/>
On Server2, there is a reservation for computer2.contoso.com.	<input type="radio"/>	<input type="radio"/>
On Server2, Policy1 is applied to Scope1.	<input type="radio"/>	<input type="radio"/>

- A. Mastered
- B. Not Mastered

Answer: A

Explanation:

Text Description automatically generated
Reference:
https://docs.microsoft.com/en-us/powershell/module/dhcpserver/export-dhcpserver?view=windowsserver2022-p https://docs.microsoft.com/en-us/powershell/module/dhcpserver/import-dhcpserver?view=windowsserver2022-p

NEW QUESTION 64

- (Exam Topic 3)
Your network contains an Active Directory Domain Services (AD DS) domain. The domain contains a server named Server1 that runs Windows Server.

You run Get-BitLockerVolume -MountPoint c:, which generates the following output.

```
ComputerName      : SERVER1
MountPoint        : C:
EncryptionMethod  : None
AutoUnlockEnabled :
AutoUnlockKeyStored :
MetadataVersion   : 0
VolumeStatus      : FullyDecrypted
ProtectionStatus   : Off
LockStatus        : Unlocked
```

Answer Area

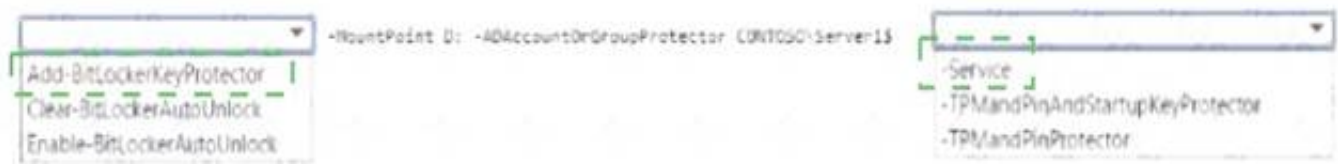


- A. Mastered
- B. Not Mastered

Answer: A

Explanation:

Answer Area



NEW QUESTION 66

- (Exam Topic 3)
You have an Azure virtual machine named VM1.
You enable Microsoft Defender SmartScreen on VM1.
You need to ensure that the SmartScreen messages displayed to users are logged. What should you do?

A. From a command prompt, run WinRM quickconfig.
B. From the local Group Policy, modify the Advanced Audit Policy Configuration settings.
C. From Event Viewer, enable the Debug log.
D. From the Windows Security ap
E. configure the Virus & threat protection settings.

Answer: C

Explanation:
Reference:
<https://docs.microsoft.com/en-us/windows/security/threat-protection/microsoft-defender-smartscreen/microsoft>

NEW QUESTION 69

- (Exam Topic 3)
Your network contains an Active Directory Domain Services (AD DS) domain. The domain contains a print server named Server1. All printers are deployed to users by using a Group Policy Object (GPO) named GPO1.
You deploy a new server named Server2.
You need to decommission Server1. The solution must meet the following requirements:

- Migrate the shared printers to Server2 by using the Printer Migration Wizard.
- Ensure that the users use the printers on Server2.
- Minimize downtime for the users.

Which four actions should you perform in sequence? To answer, move the appropriate actions from the list of actions to the answer area and arrange them in the correct order.

Actions

Decommission Server1.

Import the printers on Server2.

Deploy Windows Server Hybrid Cloud Print.

Export the printers on Server1.

Update the service principal name (SPN) of each printer.

Modify GPO1.

Answer Area

- A. Mastered
B. Not Mastered

Answer: A

Explanation:
Graphical user interface, text, application, email Description automatically generated
Reference:
<https://docs.microsoft.com/en-us/archive/blogs/canitpro/step-by-step-migrating-print-servers-from-windows-ser>

NEW QUESTION 70

- (Exam Topic 3)
You have a failover cluster named Cluster1 that contains the nodes shown in the following table.

Name	Server role
Node1	File Server
Node2	File Server
Node3	File Server

A File Server for general use cluster role named HAFS is configured as shown in the General exhibit (Click the General tab.)

Answer Area

If you select Move , and then Best Possible Node , HAFS will move to Node3.	<input type="radio"/>	<input type="radio"/>
If you stop and start Cluster1, HAFS will come online on Node1.	<input type="radio"/>	<input type="radio"/>
If you select Move, Select Node , and then Node2 , HAFS will move to Node2.	<input type="radio"/>	<input type="radio"/>

- A. Mastered
- B. Not Mastered

Answer: A

Explanation:
Answer Area

If you select Move , and then Best Possible Node , HAFS will move to Node3.	<input checked="" type="radio"/>	<input type="radio"/>
If you stop and start Cluster1, HAFS will come online on Node1.	<input type="radio"/>	<input checked="" type="radio"/>
If you select Move, Select Node , and then Node2 , HAFS will move to Node2.	<input checked="" type="radio"/>	<input type="radio"/>

NEW QUESTION 74

- (Exam Topic 3)

You have an on-premises Active Directory Domain Services (AD DS) domain that syncs with an Azure Active Directory (Azure AD) tenant. The AD DS domain contains a domain controller named DC1. DC1 does NOT have internet access. You need to configure password security for on-premises users. The solution must meet the following requirements:

- > Prevent the users from using known weak passwords.
- > Prevent the users from using the company name in passwords.

What should you do? To answer, drag the appropriate configurations to the correct targets. Each configuration may be used once, more than once, or not at all. You may need to drag the split bar between panes or scroll to view content.

NOTE: Each correct selection is worth one point.

Configurations	Answer Area
Configure Azure AD Identity Protection.	On DC1: <input type="text" value="Configuration"/>
Configure Azure AD Password Protection.	On a member server: <input type="text" value="Configuration"/>
Install the Azure AD Pass-through Authentication Agent.	In Azure: <input type="text" value="Configuration"/>
Install the Azure AD Password Protection DC agent.	
Install the Azure AD Password Protection proxy service.	

- A. Mastered
- B. Not Mastered

Answer: A

Explanation:
Reference:
<https://docs.microsoft.com/en-us/azure/active-directory/authentication/howto-password-ban-bad-on-premises-de>

NEW QUESTION 76

- (Exam Topic 3)

You have a server that runs Windows Server and has the Web Server (IIS) server role installed. Server1 hosts a single website that has the following configurations:

- > Is accessible by using a URL of <https://www.contoso.com:8443> and has an SSL certificate that was issued by a third-party certification authority (CA) in the Microsoft Trusted Root Program
- > Uses anonymous authentication
- > Was developed by using PHP

You plan to use APP Service Migration Assistant to migrate the website to Azure App Service. You need to migrate the website. The solution must minimize the number of changes made to the existing website. What should you do manually to ensure that the website migration is successful? To answer, select the appropriate options in the answer area.

NOTE: Each correct selection is worth one point.
Answer Area

On Server1:

Change the authentication method.

Change the listening port of the website.

Redevelop the website code by using ASP.NET.

In Azure:

Create an App Service plan.

Copy the source files of the website.

Configure a certificate and a custom domain name.

- A. Mastered
- B. Not Mastered

Answer: A

Explanation:
Graphical user interface, text, application Description automatically generated
Reference:
<https://docs.microsoft.com/en-us/learn/modules/migrate-app-service-migration-assistant/3-understand-assessme> <https://docs.microsoft.com/en-us/learn/modules/migrate-app-service-migration-assistant/5-understand-migration>

NEW QUESTION 79

- (Exam Topic 3)
Your network contains an Active Directory Domain Services (AD DS) domain. You need to implement a solution that meets the following requirements:

- Ensures that the members of the Domain Admins group are allowed to sign in only to domain controllers
- Ensures that the lifetime of Kerberos Ticket Granting Ticket (TGT) for the members of the Domain Admins group is limited to one hour

Which three actions should you perform in sequence? To answer, move the appropriate actions from the list of actions to the answer area and arrange them in the correct order.

Actions

Create a Dynamic Access Control central access policy.

Configure the Kerberos Policy settings for the Default Domain Policy Group Policy Object (GPO).

Create a Dynamic Access Control claim type.

Create an authentication policy.

Assign the authentication policy silo to user and computer accounts.

Create an authentication policy silo.

Answer Area

- A. Mastered
- B. Not Mastered

Answer: A

Explanation:
Graphical user interface, text, application, email Description automatically generated
Reference:
<https://docs.microsoft.com/en-us/windows-server/identity/ad-ds/manage/how-to-configure-protected-accounts>

NEW QUESTION 80

- (Exam Topic 3)
Your network contains an Active Directory Domain Services (AD DS) forest. The forest contains the domains shown in the following table.

Name	Domain controller	Configuration
fabrikam.com	DC1	PDC emulator
	DC2	Infrastructure master
	DC3	Read-only domain controller (RODC)
eu.fabrikam.com	DC4	PDC emulator
	DC5	Infrastructure master
	DC6	Read-only domain controller (RODC)

You are implementing Microsoft Defender for Identity sensors.
You need to install the sensors on the minimum number of domain controllers. The solution must ensure that Defender for Identity will detect all the security risks in both the domains.
What should you identify? To answer, select the appropriate options in the answer area. NOTE: Each correct selection is worth one point.

Domain controllers that require the sensors:

DC1 and DC4 only

DC2 and DC5 only

DC1, DC2, DC4, and DC5 only

All the domain controllers in the forest

Authentication information that must be provided during the sensor installation:

An AD DS group managed service account (gMSA)

A cloud-only user from Azure Active Directory (Azure AD)

The access key generated by the Microsoft Defender for Identity portal

- A. Mastered
- B. Not Mastered

Answer: A

Explanation:
Text, table Description automatically generated
Reference:
<https://docs.microsoft.com/en-us/defender-for-identity/technical-faq#deployment> <https://docs.microsoft.com/en-us/defender-for-identity/install-step4>

NEW QUESTION 84

- (Exam Topic 3)
You plan to deploy the Azure Monitor agent to 100 on-premises servers that run Windows Server. Which parameters should you provide when you install the agent?

- A. the client ID and the secret of an Azure service principal
- B. the name and the access key of an Azure Storage account
- C. a connection string for an Azure SQL database
- D. the ID and the key of an Azure Log Analytics workspace

Answer: D

Explanation:
Reference:
<https://docs.microsoft.com/en-us/windows-server/storage/storage-spaces/configure-azure-monitor>

NEW QUESTION 87

- (Exam Topic 3)
You have an on-premises server named Server1 and Microsoft Sentinel instance.
You plan to collect windows Defender Firewall events from Sever1 and analyze the event data by using Microsoft Sentinel.
What should you install on Server1, and which information should you provide during the instance? To answer, select the appropriate options in the answer area.
NOTE: Each correct selection is worth one point.

Answer Area

Install:

Provider:

- A. Mastered
 B. Not Mastered

Answer: A

Explanation:

Answer Area

Install:

Provider:

NEW QUESTION 89

- (Exam Topic 3)

You have three servers named Server 1, Servers and Server3 that run Windows Server. The servers have the Hyper-V server role installed and are configured in a Storage Spaces Deed cluster named Cluster1.

Cluster1 hosts a virtual machine named VM1 that has Windows Admin Center Installed. You manage all servers and clusters by using Windows Admin Center.

You purchase an Azure subscription.

You need to configure email alerts in Azure Monitor for the following:

- Disk Capacity Utilization Over 80% for 10 Minutes
- Any critical alert in the cluster system event log
- Memory Utilization over 95% for 10 minutes
- Heartbeat fewer than 5 beats for 5 Minutes.
- CPU Utilization over 85 % for 10 Minutes.
- Any hearth service faults for the cluster

The solution must use the minimum amount of administrative effort. What should you do?

- A. From Windows Admin Center, configure Azure Monitor and onboard clustered.
 B. From Azure portal, configure Azure Monitor and onboard Cluster1 by using Azure Arc.
 C. Configure Azure Monitor and manually install the Microsoft Monitoring Agent on Server1, Server2 and Server3

Answer: A

NEW QUESTION 93

- (Exam Topic 3)

You need to use a comma-separated value (CSV) file to import server inventory to Azure Migrate. Which fields are mandatory for each entry in the CSV file?

- A. Server nam
 B. Cores, OS Name, and Memory (in MB)
 C. Server name, IP addresse
 D. Disk 1 size (in GB), and CPU utilization percentage
 E. Server name, IP addresses, OS version, and Number of disks

Answer: B

NEW QUESTION 96

- (Exam Topic 3)

Note: This question is part of a series of questions that present the same scenario. Each question in the series contains a unique solution that might meet the stated goals. Some question sets might have more than one correct solution, while others might not have a correct solution.

After you answer a question in this section, you will NOT be able to return to it. As a result, these questions will not appear in the review screen.

You have a failover cluster named Cluster1 that hosts an application named App1.

The General tab in App1 Properties is shown in the General exhibit. (Click the General tab.)

App1 Properties

General Failover

App1

Name: App1

Preferred Owners
 Select the preferred owners for this clustered role. Use the buttons to list them in order from most preferred at the top to least preferred at the bottom.

☐ Server1 ☐ Server2

Priority: Medium

Status: Running
 Node: Server2

OK Cancel Apply

The Failover tab in App1 Properties is shown in the Failover exhibit. (Click the Failover tab.)

App1 Properties

General Failover

Failover
 Specify the number of times the Cluster service will attempt to restart or fail over the clustered role in the specified period.
 If the clustered role fails more than the maximum in the specified period, it will be left in the failed state.

Maximum failures in the specified period: 3
 Period (hours): 6

Failback
 Specify whether the clustered role will automatically fail back to the most preferred owner (which is set on the General tab).

☐ Prevent failback
☒ Allow failback

☒ Immediately
☐ Failback between 0 and 0 hours

OK Cancel Apply

Server1 shuts down unexpectedly.

You need to ensure that when you start Server1, App1 continues to run on Server2. Solution: From the Failover settings, you select Prevent failback. Does this meet the goal?

- A. Yes
- B. No

Answer: A

Explanation:

The Prevent failback setting will prevent the cluster failing back to Server1.

NEW QUESTION 99

- (Exam Topic 3)

Note: This question is part of a series of questions that present the same scenario. Each question in the series contains a unique solution that might meet the

stated goals. Some question sets might have more than one correct solution, while others might not have a correct solution.
After you answer a question in this section, you will NOT be able to return to it. As a result, these questions will not appear in the review screen.
Your network contains a single-domain Active Directory Domain Services (AD DS) forest named contoso.com. The functional level of the forest is Windows Server 2012 R2. All domain controllers run Windows Server 2012 R2.
Sysvol replicates by using the File Replication Service (FRS).
You plan to replace the existing domain controllers with new domain controllers that will run Windows Server 2022.
You need to ensure that you can add the first domain controller that runs Windows Server 2022. Solution: You run the Active Directory Migration Tool (ADMT).
Does this meet the goal?

- A. Yes
- B. No

Answer: B

NEW QUESTION 104

- (Exam Topic 3)

Note: This question is part of a series of questions that present the same scenario. Each question in the series contains a unique solution that might meet the stated goals. Some question sets might have more than one correct solution, while others might not have a correct solution.
After you answer a question in this section, you will NOT be able to return to it. As a result, these questions will not appear in the review screen.
You have a server named Server1 that runs Windows Server.
You need to ensure that only specific applications can modify the data in protected folders on Server1. Solution: From Virus & threat protection, you configure Controlled folder access.
Does this meet the goal?

- A. Yes
- B. No

Answer: A

Explanation:

Reference:

<https://docs.microsoft.com/en-us/microsoft-365/security/defender-endpoint/customize-controlled-folders?view=>

NEW QUESTION 108

- (Exam Topic 3)

You have two Azure Virtual machines that run Windows Server.
You plan to create a failover cluster that will host the virtual machines.
You need to configure an Azure Storage account that will be used by the cluster as a cloud witness. The solution must maximize resiliency.
Which type of redundancy should you configure for the storage account?

- A. Geo-zone-redundant storage (GZRS)
- B. Geo-redundant storage (GRS)
- C. Zone-redundant storage (ZRS)
- D. Locally-redundant storage (LRS)

Answer: C

NEW QUESTION 112

- (Exam Topic 3)

Note: This question is part of a series of questions that present the same scenario. Each question in the series contains a unique solution that might meet the stated goals. Some question sets might have more than one correct solution, while others might not have a correct solution.
After you answer a question in this section, you will NOT be able to return to it. As a result, these questions will not appear in the review screen.
You have a server named Server1 that runs Windows Server.
You need to ensure that only specific applications can modify the data in protected folders on Server1. Solution: From App & browser control, you configure the Exploit protection settings.
Does this meet the goal?

- A. Yes
- B. No

Answer: B

Explanation:

Reference:

<https://docs.microsoft.com/en-us/microsoft-365/security/defender-endpoint/customize-controlled-folders?view=>

NEW QUESTION 115

- (Exam Topic 3)

You have three servers named Host1, Host2, and VM1 that run Windows Server. Host1 and Host2 have the Hyper-V server role installed. VM1 is a virtual machine hosted on Host1.
You configure VM1 to replicate to Host2 by using Hyper-V Replica.
Which types of failovers can you perform on VM1 on each host? To answer, select the appropriate options in the answer area.
NOTE: Each correct selection is worth one point.

VM1 on Host1:

Failover only

Test Failover only

Planned Failover only

Failover and Planned Failover only

Test Failover and Failover only

VM1 on Host2:

Failover only

Test Failover only

Planned Failover only

Failover and Planned Failover only

Test Failover and Failover only

- A. Mastered
- B. Not Mastered

Answer: A

Explanation:
Graphical user interface, text, application, chat or text message Description automatically generated

NEW QUESTION 117

- (Exam Topic 3)
You have a server named Server1 that runs Windows Server.
You need to ensure that only specific applications can modify the data in protected folders on Server1. Solution: From App & browser control, you configure the Reputation-based protection.
Does this meet the goal?

- A. Yes
- B. No

Answer: B

NEW QUESTION 122

- (Exam Topic 3)
You have two Azure virtual networks named Vnet1 and Vnet2.
You have a Windows 10 device named Client1 that connects to Vnet1 by using a Point-to-Site (P2S) IKEv2 VPN.
You implement virtual network peering between Vnet1 and Vnet2. Vnet1 allows gateway transit Vnet2 can use the remote gateway.
You discover that Client1 cannot communicate with Vnet2. You need to ensure that Client1 can communicate with Vnet2. Solution: You resize the gateway of Vnet1 to a larger SKU. Does this meet the goal?

- A. Yes
- B. No

Answer: B

NEW QUESTION 125

- (Exam Topic 3)
You have two servers that have the Web Server (IIS) server role installed. The servers are configured as shown in the following table.

Name	Operating system
Server1	Windows Server 2016
Server2	Windows Server 2022

Both servers are configured to enable website deployment by using the Web Deployment Tool. Server1 hosts a website named Site1 that has Web Deploy Publishing configured.
You plan to migrate Site1 to Server2.
You need to perform a pull synchronization of Site1 by using the Web Deployment Agent Service. How should you complete the command? To answer, select the appropriate options in the answer area. NOTE: Each correct selection is worth one point.

msdeploy -verb:sync -source:

apphostconfig="Site1"

apphostconfig="Site1",computername=Server1

apphostconfig="Site1",computername=Server2

package=c:\site1.zip

 -dest:

apphostconfig="Site1"

apphostconfig="Site1",computername=Server1

apphostconfig="Site1",computername=Server2

package=c:\site1.zip

- A. Mastered
- B. Not Mastered

Answer: A

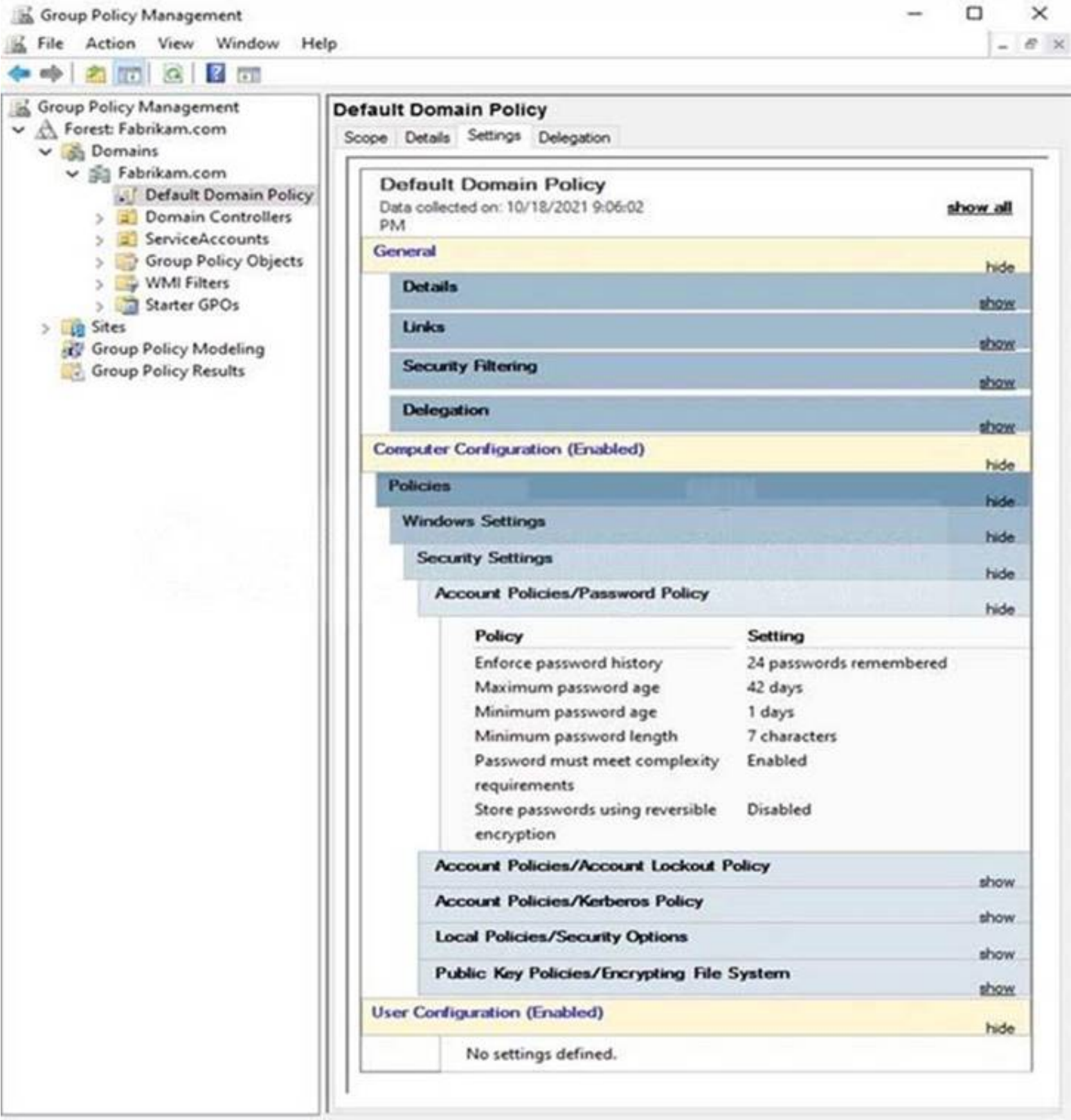
Explanation:

Reference:
<https://docs.microsoft.com/en-us/iis/publish/using-web-deploy/synchronize-iis>

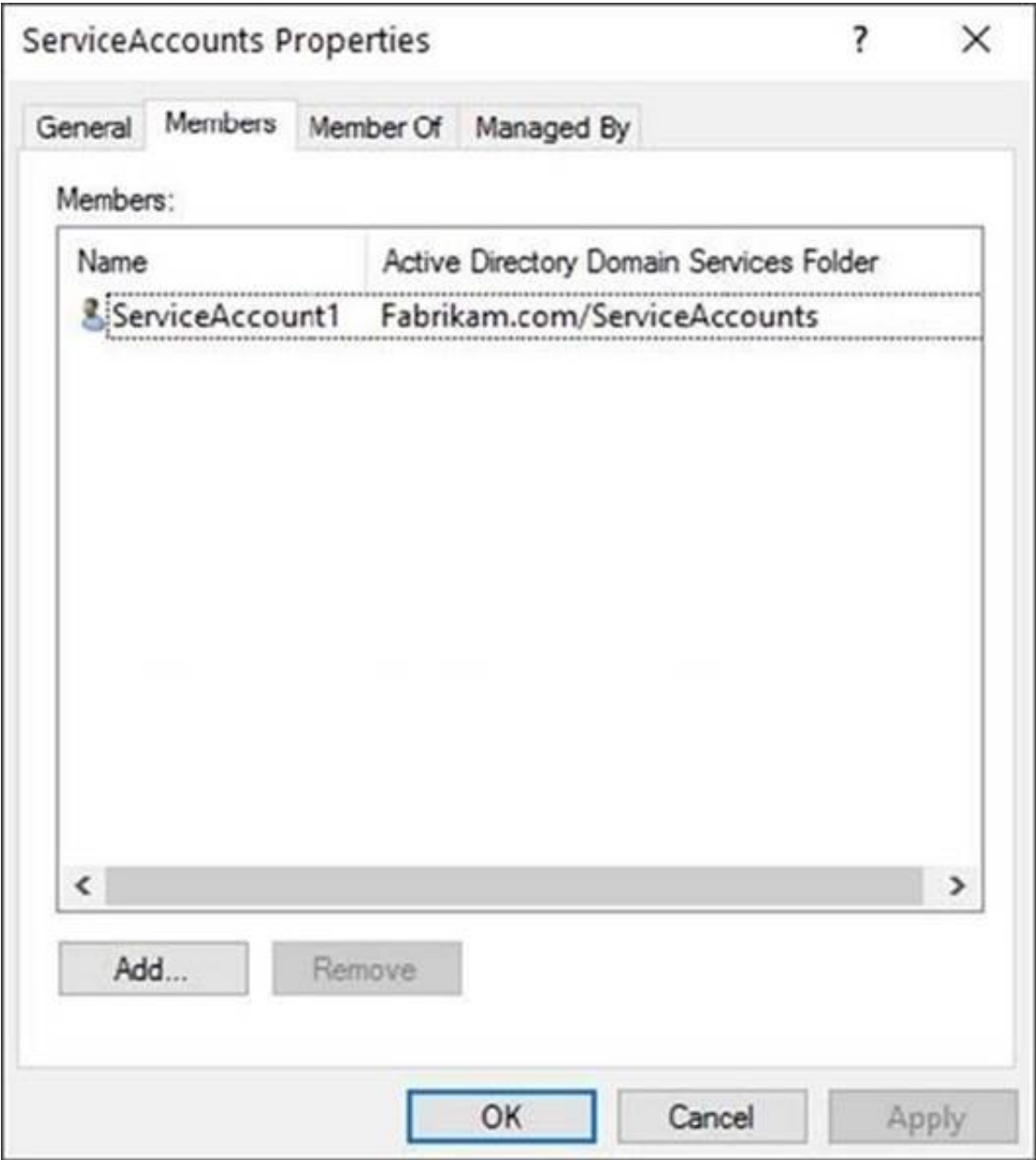
NEW QUESTION 126

- (Exam Topic 3)

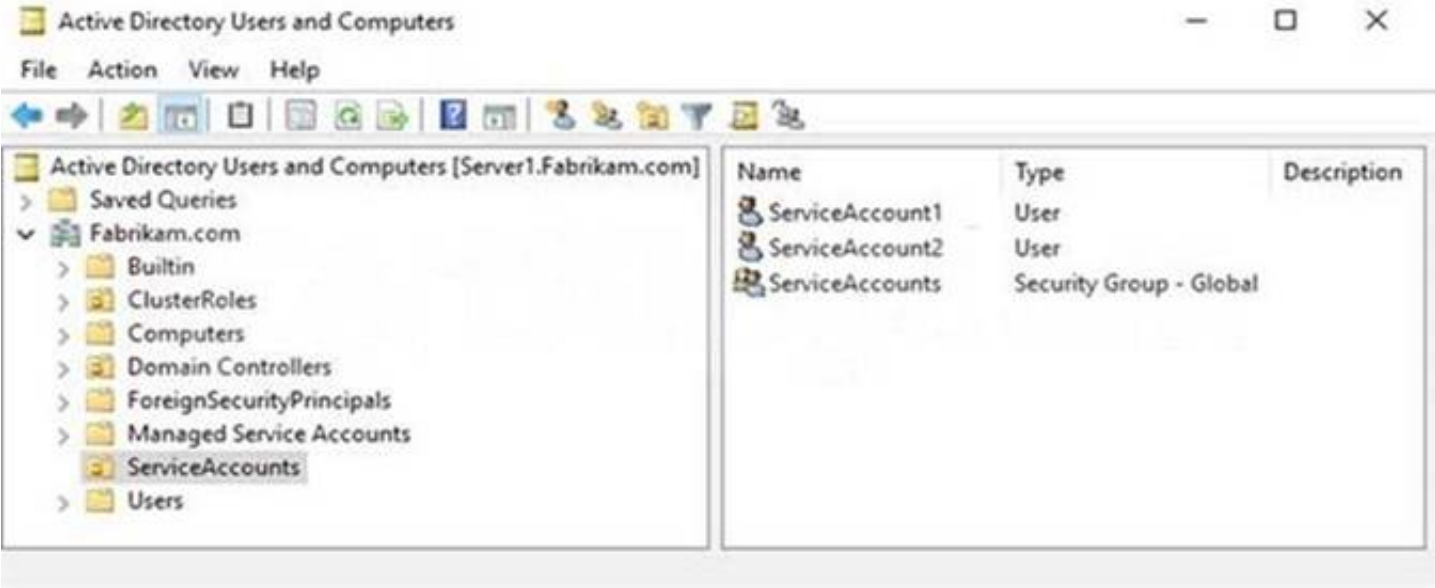
The Default Domain Policy Group Policy Object (GPO) is shown in the GPO exhibit. (Click the GPO tab.)



The members of a group named Service Accounts are shown in the Group exhibit. (Click the Group tab.)



An organizational unit (OU) named ServiceAccounts is shown in the OU exhibit. (Click the OU tab.)



You create a Password Settings Object (PSO) as shown in the PSO exhibit. (Click the PSO tab.)

Service Accounts Policy

TASKS ▾ SECTIONS ▾

Password Settings ? X ▲

Directly Applies To

Extensions

Password Settings

Name: * Service Accounts Policy

Precedence: * 10

☒ Enforce minimum password length

Minimum password length (character... * 16

☒ Enforce password history

Number of passwords remembered: * 12

☒ Password must meet complexity requirements

☐ Store password using reversible encryption

☒ Protect from accidental deletion

Description:

Password age options:

☒ Enforce minimum password age

User cannot change the password... * 1

☒ Enforce maximum password age

User must change the password af... * 30

☒ Enforce account lockout policy:

Number of failed logon attempts allo... * 5

Reset failed logon attempts count aft... * 30

Account will be locked out

☒ For a duration of (mins): * 60

☐ Until an administrator manually unlocks the a...

Directly Applies To ? X ▲

Name	Mail
ServiceAccounts	

Add... Remove

Extentions X ▲

More Information

OK Cancel

For each of the following statements, select Yes if the statement is true. Otherwise, select No. NOTE: Each correct selection is worth one point.

Statements	Yes	No
The password of ServiceAccount1 must be at least 16 characters long.	<input type="radio"/>	<input type="radio"/>
The password of ServiceAccount2 must be at least 16 characters long.	<input type="radio"/>	<input type="radio"/>
Accounts that have the Service Accounts Policy applied can change their password to P@\$\$w0rd1.	<input type="radio"/>	<input type="radio"/>

- A. Mastered
B. Not Mastered

Answer: A

Explanation:

A screenshot of a computer Description automatically generated with medium confidence

Reference:

<https://docs.microsoft.com/en-us/windows-server/identity/ad-ds/get-started/adac/introduction-to-active-directory>

NEW QUESTION 127

- (Exam Topic 2)

You need to back up Server 4 to meet the technical requirements. What should you do first?

- A. Deploy Microsoft Azure Backup Server (MABS).
- B. Configure Windows Server Backup.
- C. Install the Microsoft Azure Recovery Services (MARS) agent.
- D. Configure Storage Replica.

Answer: C

Explanation:

Reference:

<https://docs.microsoft.com/en-us/azure/backup/install-mars-agent>

NEW QUESTION 132

- (Exam Topic 2)

What is the effective minimum password length for User1 and Admin1? To answer, select the appropriate options in the answer area.

NOTE: Each correct selection is worth one point.

Answer Area

User1:

8

9

10

11

12

Admin1:

8

9

10

11

12

- A. Mastered
- B. Not Mastered

Answer: A

Explanation:

Table Description automatically generated
Box 1: 9
When multiple PSOs apply to a user, the PSO with the highest precedence (lowest precedence number) applies which in this case is PSO1.
Box 2: 8
There are no PSOs applied to Admin1 so the password policy from the Default Domain GPO applies. The Minimum password length setting in GPO1 would only apply to local user accounts on computers in OU1. It does not apply to domain user accounts.

NEW QUESTION 133

- (Exam Topic 2)
You need to implement alerts for the domain controllers. The solution must meet the technical requirements. What should you do on the domain controllers, and what should you create on Azure? To answer, select the appropriate options in the answer area.
NOTE: Each correct selection is worth one point.

Answer Area

On the domain controllers:

Create a Data Collector Set in Performance Monitor.

Modify the Performance Monitor Users group.

Install the Azure Monitor agent.

In Azure:

Create an Azure SQL database.

Create a Storage Sync Service.

Create an Azure Log Analytics workspace.

Create an Azure Storage account.

- A. Mastered
- B. Not Mastered

Answer: A

Explanation:

Text Description automatically generated
Reference:
<https://docs.microsoft.com/en-us/azure/azure-monitor/agents/azure-monitor-agent-overview?tabs=PowerShellW>

NEW QUESTION 134

- (Exam Topic 2)
For each of the following statements, select Yes if the statement is true. Otherwise, select No.
NOTE: Each correct selection is worth one point.

Statements	Yes	No
User1 can sign in to Server4 by using Remote Desktop.	<input type="radio"/>	<input type="radio"/>
User2 can sign in to Server4 by using Remote Desktop.	<input type="radio"/>	<input type="radio"/>
User3 can sign in to Server4 by using Remote Desktop.	<input type="radio"/>	<input type="radio"/>

- A. Mastered
- B. Not Mastered

Answer: A

Explanation:
Text Description automatically generated

NEW QUESTION 135

- (Exam Topic 1)
You need to implement a security policy solution to authorize the applications. The solution must meet the security requirements. Which service should you use to enforce the security policy, and what should you use to manage the policy settings? To answer, select the appropriate options in the answer area. NOTE: Each correct selection is worth one point.

Answer Area

Enforce the security policy:

Microsoft Defender Application Control

Microsoft Defender Application Guard

Microsoft Defender Credential Guard

Microsoft Defender for Endpoint

Manage the policy settings:

Configuration profiles in Microsoft Intune

Compliance policies in Microsoft Intune

Group Policy Objects (GPOs)

- A. Mastered
- B. Not Mastered

Answer: A

Explanation:
Graphical user interface, text, application, chat or text message Description automatically generated
Reference:
<https://docs.microsoft.com/en-us/windows/security/threat-protection/windows-defender-application-control/wda>

NEW QUESTION 140

- (Exam Topic 1)
You are planning the implementation of Cluster2 to support the on-premises migration plan. You need to ensure that the disks on Cluster2 meet the security requirements. In which order should you perform the actions? To answer, move all actions from the list of actions to the answer area and arrange them in the correct order.

Actions

Add a disk resource to the cluster.

Enable BitLocker on the volume.

Update the BitLockerProtectorInfo property of the volume.

Create a Cluster Shared Volume (CSV).

Put the disk in maintenance mode.

Answer Area

- A. Mastered
- B. Not Mastered

Answer: A

Explanation:

Graphical user interface, text, application, table Description automatically generated

Reference:

<https://docs.microsoft.com/en-us/windows-server/failover-clustering/bitlocker-on-csv-in-ws-2022>

NEW QUESTION 141

- (Exam Topic 1)

You are planning the www.fabrikam.com website migration to support the Azure migration plan. How should you configure WebApp1? To answer, select the appropriate options in the answer area. NOTE: Each correct selection is worth one point.

Answer Area

To enable WebApp1 to handle requests for the website:

Add a custom domain name.
Create a deployment slot.
Create a private endpoint.

To point client connections to WebApp1:

Add HTTP redirect rules on WEB1 and WEB2.
Implement Azure Front Door.
Implement Azure Traffic Manager.
Modify a DNS record.

- A. Mastered
- B. Not Mastered

Answer: A

Explanation:

Box 1: Add a custom domain name

To migrate www.fabrikam.com website to an Azure App Service web app, you need to add Fabrikam.com as a custom domain in Azure. This will make the domain name available to use in the web app.

Box 2: Modify a DNS record

You need to change the DNS record for www.fabrikam.com to point to the Azure web app. HTTP redirect rules won't work because WEB1 and WEB2 will be decommissioned. Reference:

<https://docs.microsoft.com/en-us/azure/app-service/app-service-web-tutorial-custom-domain?tabs=a%2Cazurecl>

NEW QUESTION 145

- (Exam Topic 1)

You are planning the DHCP1 migration to support the DHCP migration plan.

Which two PowerShell cmdlets should you run on DHCP1, and which two PowerShell cmdlets should you run on DHCP2? To answer, drag the appropriate cmdlets to the correct servers. Each cmdlet may be used once, more than once, or not at all. You may need to drag the split bar between panes or scroll to view content.

NOTE: Each correct selection is worth one point.

Cmdlets

Add-DhcpServerInDC

Add-DhcpServerv4Scope

Export-DhcpServer

Import-DhcpServer

Remove-DhcpServerInDC

Remove-DhcpServerv4Scope

Answer Area

DHCP1:

Cmdlet

Cmdlet

DHCP2:

Cmdlet

Cmdlet

- A. Mastered
- B. Not Mastered

Answer: A

Explanation:

Graphical user interface, text, application, chat or text message Description automatically generated

Reference:

<https://theitbros.com/how-to-migrate-dhcp-to-windows-server-2016/>

NEW QUESTION 148

.....

Passing Certification Exams Made Easy

visit - <https://www.surepassexam.com>

Thank You for Trying Our Product

We offer two products:

1st - We have Practice Tests Software with Actual Exam Questions

2nd - Questions and Answers in PDF Format

AZ-801 Practice Exam Features:

- * AZ-801 Questions and Answers Updated Frequently
- * AZ-801 Practice Questions Verified by Expert Senior Certified Staff
- * AZ-801 Most Realistic Questions that Guarantee you a Pass on Your First Try
- * AZ-801 Practice Test Questions in Multiple Choice Formats and Updates for 1 Year

100% Actual & Verified — Instant Download, Please Click
[Order The AZ-801 Practice Test Here](#)