



# Microsoft

## Exam Questions MD-100

Windows 10

#### NEW QUESTION 1

- (Exam Topic 4)

You have a computer named Computer1 that runs Windows 11.

You need to ensure that when Computer1 is low on disk space, the computer automatically cleans up temporary files and empties the Recycle Bin.

What should you use?

- A. Optimize Drives
- B. Disk Cleanup
- C. Storage Sense
- D. Storage Spaces

**Answer:** C

#### NEW QUESTION 2

- (Exam Topic 4)

Your company purchases 20 laptops that use a new hardware platform. In a test environment, you deploy Windows 10 to the new laptops. Some laptops frequently generate stop errors.

You need to identify the cause of the issue. What should you use?

- A. Reliability Monitor
- B. Task Manager
- C. System Configuration
- D. Performance Monitor

**Answer:** A

#### Explanation:

References:

<https://lifehacker.com/how-to-troubleshoot-windows-10-with-reliability-monitor-1745624446>

#### NEW QUESTION 3

- (Exam Topic 4)

You have a public computer named Public1 that runs Windows 10. Users use Public1 to browse the internet by using Microsoft Edge.

You need to view events associated with website phishing attacks on Public1. Which Event Viewer log should you view?

- A. Applications and Services Logs > Microsoft > Windows > SmartScreen > Debug
- B. Applications and Services Logs > Microsoft > Windows > Security-Mitigations > User Mode
- C. Applications and Services Logs > Microsoft > Windows > Windows Defender > Operational
- D. Applications and Services Logs > Microsoft > Windows > DeviceGuard > Operational

**Answer:** A

#### NEW QUESTION 4

- (Exam Topic 4)

Your network contains an Active Directory domain. The domain contains 500 computers that run Windows 10. The computers are used as shown in the following table.

Usage	Update note
Manufacturing	Critical computers that must have minimal downtime: Updates must be deferred as long as possible.
Information technology (IT)	Computers for IT staff: Updates must be installed as soon as they are released.
Administration	Computers for general use: Updates must be installed two months after they are released.

You need to apply updates based on the computer usage. What should you configure?

- A. Notifications & actions from System in the Settings apps.
- B. the Windows Update for Business settings by using a Group Policy Object (GPO)
- C. the Windows Installer settings by using a Group Policy Object (GPO)
- D. Delivery Optimization from Update & Security in the Settings apps

**Answer:** B

#### Explanation:

Reference:

<https://docs.microsoft.com/en-us/windows/deployment/update/waas-wufb-group-policy>

#### NEW QUESTION 5

- (Exam Topic 4)

You have computers that run Windows 10. The computers are joined to an Azure Active Directory (Azure AD) tenant and enrolled in Microsoft Intune.

You need to recommend a solution for help desk administrators that meets the following requirements:

- The administrators must assist users remotely by connecting to each user's computer.
- The remote connections must be initiated by the administrators. The users must approve the connection.
- Both the users and the administrators must be able to see the screen of the users' computer.
- The administrators must be able to make changes that require running applications as a member of each computer's Administrators group.

Which tool should you include in the recommendation?

- A. Remote Desktop
- B. Intune
- C. Remote Assistance
- D. Quick Assist

**Answer: B**

**Explanation:**

References:  
<https://docs.microsoft.com/en-us/mem/intune/remote-actions/remote-assist-mobile-devices>

#### NEW QUESTION 6

- (Exam Topic 4)

You have three computers that run Windows 10 as shown in the following table.

Name	TPM version	Operating system
Computer1	None	Windows 10 Enterprise
Computer2	2.0	Windows 10 Pro
Computer3	1.2	Windows 10 Enterprise

All the computers have C and D volumes. The Require additional authentication at startup Group Policy settings is disabled on all the computers. Which volumes can you encrypt by using BitLocker Drive Encryption (BitLocker)? To answer, select the appropriate options in the answer area.

NOTE: Each correct selection is worth one point.

#### Answer Area

You can encrypt volume C on:

▼

Computer1 only

Computer2 only

Computer3 only

Computer1 and Computer3 only

Computer2 and Computer3 only

Computer1, Computer2 and Computer3

You can encrypt volume D on:

▼

Computer1 only

Computer2 only

Computer3 only

Computer1 and Computer3 only

Computer2 and Computer3 only

Computer1, Computer2 and Computer3

- A. Mastered
- B. Not Mastered

**Answer: A**

**Explanation:**

Volume C on = Computer 2 and 3 only Volume D on = C1, C2, C3

The "Require additional authentication at startup" setting is located in the Computer Configuration\ Administrative Templates\ Windows Components\ BitLocker Drive Encryption\ Operating System Drives path. If the policy is disabled and there is no TPM chip installed, operating system drives can not be encrypted using BitLocker. Additional data volumes can be protected using a password as a key protector for example.

References:  
<https://www.windowscentral.com/how-use-bitlocker-encryption-windows-10>

#### NEW QUESTION 7

- (Exam Topic 4)

You have a workgroup computer named Computer1 that runs Windows 10.

You need to configure Windows Hello for sign-in to Computer1 by using a physical security key. What should you use?

- A. a USB 3.0 device that supports BitLocker Drive Encryption (BitLocker)
- B. a USB device that supports FIDO2
- C. a USB 3.0 device that has a certificate from a trusted certification authority (CA)
- D. a USB device that supports RSA SecurID

**Answer: B**

**Explanation:**

Reference:

<https://docs.microsoft.com/en-us/azure/active-directory/user-help/security-info-setup-security-key>

**NEW QUESTION 8**

- (Exam Topic 4)

Your network contains an Active Directory domain. The domain contains a computer named Computer1 that runs Windows 10.

You need to ensure that Computer1 will respond to ping requests.

How should you configure Windows Defender Firewall on Computer1? To answer, select the appropriate options in the answer area.

NOTE: Each correct selection is worth one point.

**Answer Area**

Rule to create:

▼

A server-to-server connection security rule  
An authentication exemption connection security rule  
An inbound rule  
An outbound rule

Protocol type to allow:

▼

ICMPv4  
IGMP  
PGM  
TCP  
UDP

- A. Mastered
- B. Not Mastered

**Answer: A**

**Explanation:**

**Answer Area**

Rule to create:

▼

A server-to-server connection security rule  
An authentication exemption connection security rule  
An inbound rule  
An outbound rule

Protocol type to allow:

▼

ICMPv4  
IGMP  
PGM  
TCP  
UDP

**NEW QUESTION 9**

- (Exam Topic 4)

You have the computers shown in the following table.

Name	Windows 10 edition	Servicing channel
Computer1	Windows 10 Education	Semi-annual
Computer2	Windows 10 Pro	Semi-annual
Computer3	Windows 10 Enterprise	Semi-annual

You apply the 20H2 feature update as soon as the update is available.

How many months of servicing does each computer support without installing another feature update? To answer, select the appropriate options in the answer area.

NOTE: Each correct selection is worth one point.



Computer1:

6 months

12 months

18 months

30 months

Computer2:

6 months

12 months

18 months

30 months

Computer3:

6 months

12 months

18 months

30 months

- A. Mastered
- B. Not Mastered

Answer: A

**Explanation:**  
Table Description automatically generated with medium confidence  
Reference:  
<https://docs.microsoft.com/en-us/windows/deployment/update/get-started-updates-channels-tools>

NEW QUESTION 10

- (Exam Topic 4)  
You have 20 computers that run Windows 10. The computers are in a workgroup.  
You need to create a local user named Admin1 on all the computers. Admin1 must be a member of the Remote Management Users group.  
What should you do?

- A. From Windows Configuration Designer, create a provisioning package, and then run the provisioning package on each computer.
- B. Create a script that runs the New-ADUser cmdlet and the Set-AdGroup cmdlet.
- C. Create a Group Policy object (GPO) that contains the Local User Group Policy preference.
- D. Create a script that runs the New-MsolUser cmdlet and the Add-ADComputerServiceAccount cmdlet.

Answer: A

**Explanation:**  
References:  
<https://blogs.technet.microsoft.com/askpfeplat/2017/11/06/use-group-policy-preferences-to-manage-the-local-ad>

NEW QUESTION 10

- (Exam Topic 4)  
Note: This question is part of a series of questions that present the same scenario. Each question in the series contains a unique solution that might meet the stated goals. Some question sets might have more than one correct solution, while others might not have a correct solution.  
After you answer a question in this section, you will NOT be able to return to it. As a result, these questions will not appear in the review screen.  
You manage devices that run Windows 10.  
Ten sales users will travel to a location that has limited bandwidth that is expensive. The sales users will be at the location for three weeks.  
You need to prevent all Windows updates from downloading for the duration of the trip. The solution must not prevent access to email and the Internet.  
Solution: From Network & Internet in the Settings app, you set the network connections as metered connections.  
Does this meet the goal?

- A. Yes
- B. No

Answer: B

**Explanation:**  
References:  
<https://www.makeuseof.com/tag/5-ways-temporarily-turn-off-windows-update-windows-10/>

NEW QUESTION 11

- (Exam Topic 4)  
Please wait while the virtual machine loads. Once loaded, you may proceed to the lab section. This may take a few minutes, and the wait time will not be deducted

from your overall test time.

When the Next button is available, click it to access the lab section. In this section, you will perform a set of tasks in a live environment. While most functionality will be available to you as it would be in a live environment, some functionality (e.g., copy and paste, ability to navigate to external websites) will not be possible by design.

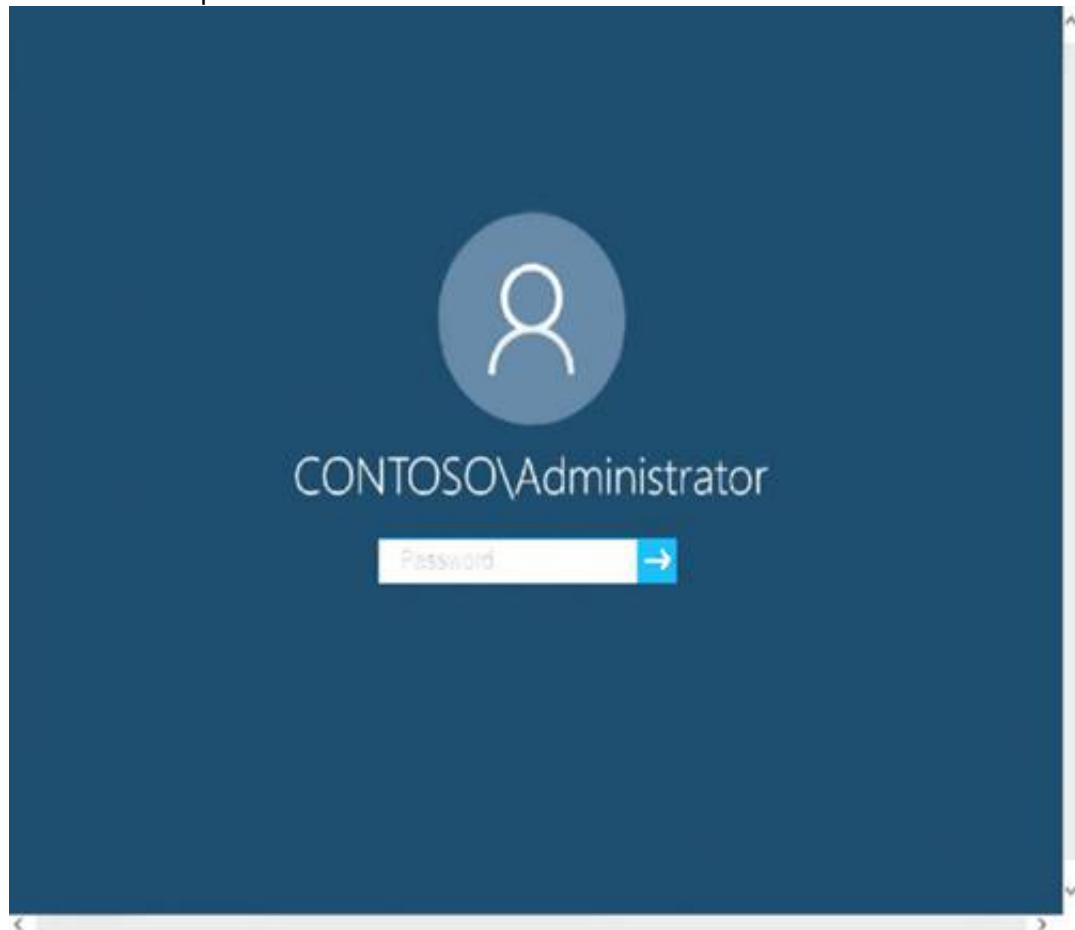
Scoring is based on the outcome of performing the tasks stated in the lab. In other words, it doesn't matter how you accomplish the task, if you successfully perform it, you will earn credit for that task.

Labs are not timed separately, and this exam may more than one lab that you must complete. You can use as much time as you would like to complete each lab.

But, you should manage your time appropriately to ensure that you are able to complete the lab(s) and all other sections of the exam in the time provided.

Please note that once you submit your work by clicking the Next button within a lab, you will NOT be able to return to the lab.

Username and password



Use the following login credentials as needed:

To enter your password, place your cursor in the Enter password box and click on the password below.

Username: Contoso/Administrator

Password: Passw0rd!

The following information is for technical support purposes only:

Lab Instance: 10921597



You need to create a group named Group2 on Client2. The members of Group2 must be able to change the system time. The solution must use the principle of least privilege.

To complete this task, sign in to the required computer or computers.

- A. Mastered
- B. Not Mastered

**Answer:** A

**Explanation:**

- > On Client2, Press Windows+R
- > Type lusrmgr.msc
- > Right click Groups and click New Group.

- Type in the Group name and a description.
- Click Add to add members to this group. Specify the name of the user or group or computer to be added.
- Click Create and Close.
- Press the Win + R keys to open Run, type secpol.msc into Run, and click/tap on OK to open Local Security Policy.
- Expand open Local Policies in the left pane of Local Security Policy, click/tap on User Rights Assignment, and double click/tap on the Change the system time policy in the right pane.
- Click/tap on the Add User or Group button.
- Click/tap on the Object Types button.
- Check all the boxes for Object types, and click/tap on the OK.
- Click/tap on the Advanced button.
- Click/tap on the Find Now button, select the name of the user or group
- Click/tap on OK.
- Click/tap on OK.
- When finished, you can close Local Users and Groups.

Reference:

<https://www.windows-active-directory.com/local-user-management.html> <https://www.tenforums.com/tutorials/92910-allow-prevent-users-groups-change-time-windows-10-a.html#optio>

### NEW QUESTION 13

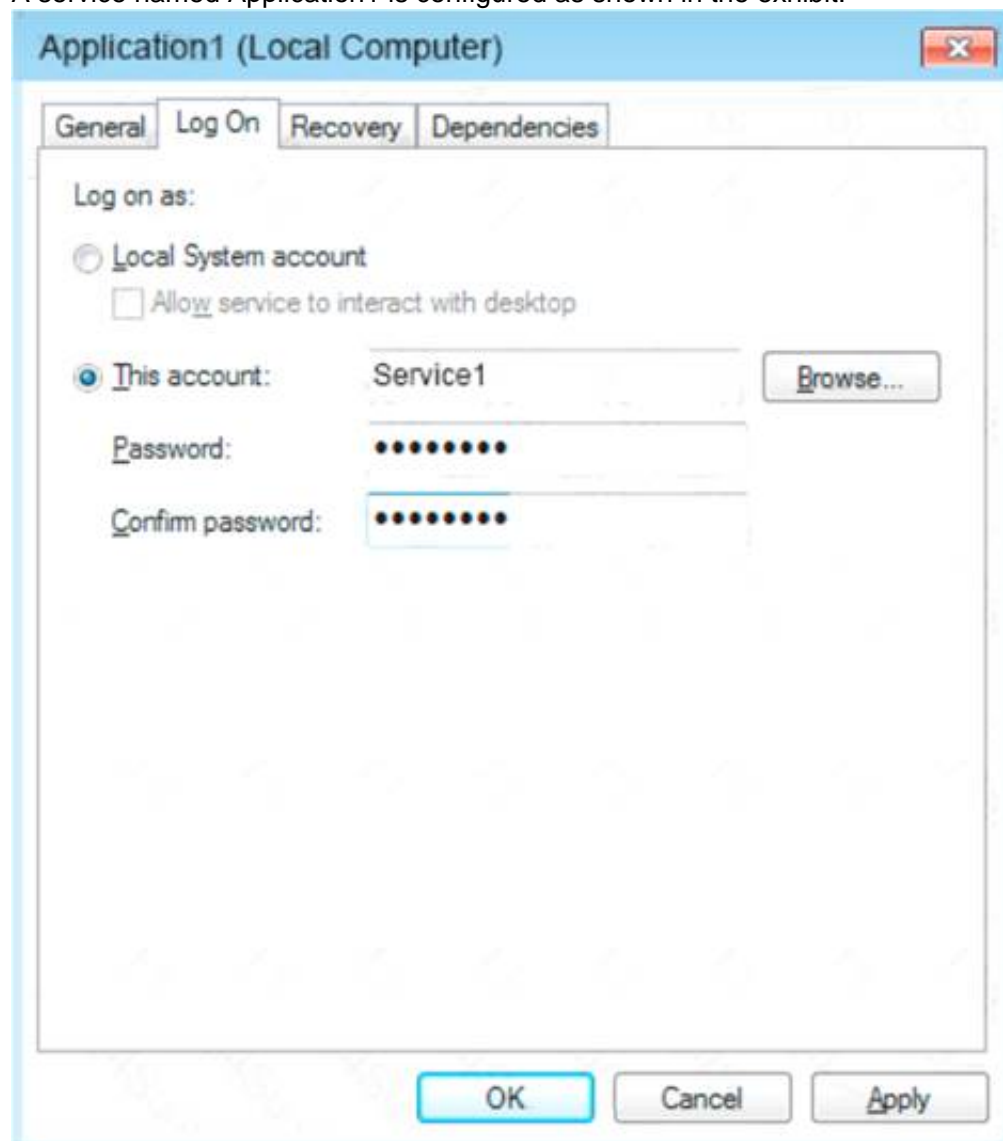
- (Exam Topic 4)

Note: This question is part of a series of questions that present the same scenario. Each question in the series contains a unique solution that might meet the stated goals. Some question sets might have more than one correct solution, while others might not have a correct solution.

After you answer a question in this section, you will NOT be able to return to it. As a result, these questions will not appear in the review screen.

You have a computer named Computer1 that runs Windows 10.

A service named Application1 is configured as shown in the exhibit.



You discover that a user used the Service1 account to sign in to Computer1 and deleted some files.

You need to ensure that the identity used by Application1 cannot be used by a user to sign in to the desktop on Computer1. The solution must use the principle of least privilege.

Solution: On Computer1, you assign Service1 the deny log on as a service user right. Does this meet the goal?

- A. Yes
- B. No

**Answer: B**

#### Explanation:

References:

<https://docs.microsoft.com/en-us/windows/security/threat-protection/security-policy-settings/deny-log-on-as-a-s>

### NEW QUESTION 18

- (Exam Topic 4)

You have a computer named Client1 that runs Windows 10 and has Windows Sandbox enabled.

You create a script named Script1.cmd. On Client1, you save Script1.cmd to a folder named C:\Scripts. You need to ensure that when you sign in to Windows

Sandbox. Script1.cmd runs automatically.  
 How should you complete the configuration file? To answer, select the appropriate options in the answer area. NOTE: Each correct selection is worth one point.

**Answer Area**

```
<Configuration>
  <MappedFolders>
    <MappedFolder>
      <HostFolder>C:\Scripts</HostFolder>
      <ReadOnly>true</ReadOnly>
    </MappedFolder>
  </MappedFolders>
  <LogonCommand>
    <Command>C:\Users\
    \
    \Script1.cmd</Command>
  </LogonCommand>
</Configuration>
```

Administrator  
 Guest  
 WDAGUtilityAccount

C\$\Scripts  
 Desktop\Scripts  
 Scripts

- A. Mastered
- B. Not Mastered

**Answer:** A

**Explanation:**

**Answer Area**

```
<Configuration>
  <MappedFolders>
    <MappedFolder>
      <HostFolder>C:\Scripts</HostFolder>
      <ReadOnly>true</ReadOnly>
    </MappedFolder>
  </MappedFolders>
  <LogonCommand>
    <Command>C:\Users\
    \
    \Script1.cmd</Command>
  </LogonCommand>
</Configuration>
```

Administrator  
 Guest  
 WDAGUtilityAccount

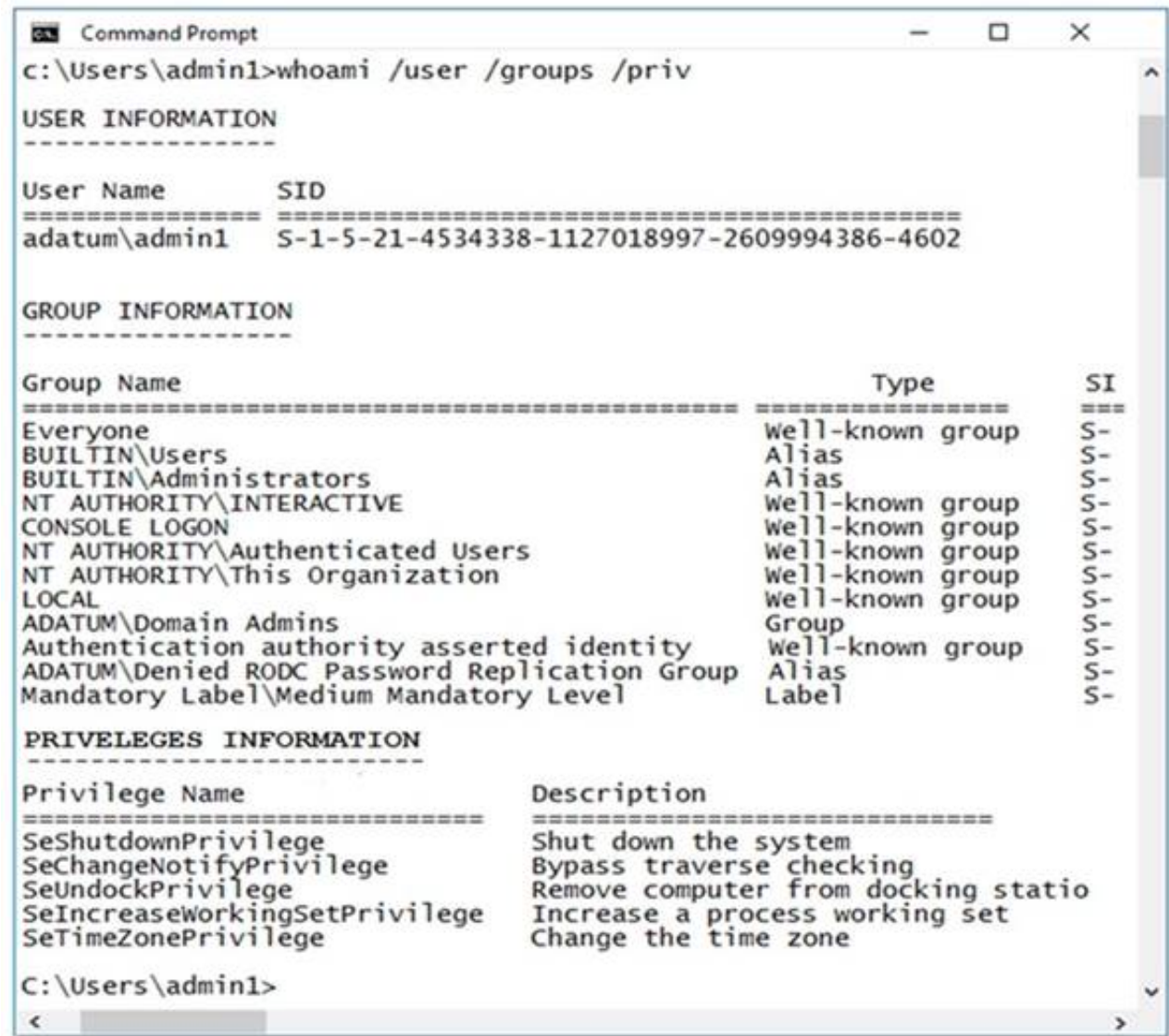
C\$\Scripts  
 Desktop\Scripts  
 Scripts

**NEW QUESTION 23**

- (Exam Topic 4)

You have a computer named Computer1 that runs Windows 10 and is joined to an Active Directory domain named adatum.com. A user named Admin1 signs in to Computer1 and runs the whoami command as shown in the following exhibit.





Use the drop-down menus to select the answer choice that completes each statement based on the information presented in the graphic.  
NOTE: Each correct selection is worth one point.

Answer Area

On Computer1, if Admin1 attempts to open Device Manager, [answer choice].

Admin1 will be prompted for credentials

Admin1 will be prompted for consent

Admin1 will be denied access

Device Manager will open without a prompt

On Computer1, if Admin1 attempts to run the command prompt as an administrator, [answer choice].

Admin1 will be prompted for credentials

Admin1 will be prompted for consent

Admin1 will be denied access

the command prompt will open without a prompt

- A. Mastered
- B. Not Mastered

Answer: A

Explanation:

On Computer1, if Admin attempts to open Device Manager, [answer choice].

Admin1 will be prompted for credentials

Admin1 will be prompted for consent

Admin1 will be denied access

Device Manager will open without a prompt

On Computer1, if Admin attempts to run the command prompt as an administrator, [answer choice].

Admin1 will be prompted for credentials

Admin1 will be prompted for consent

Admin1 will be denied access

Device Manager will open without a prompt

NEW QUESTION 26

- (Exam Topic 4)

Note: This question is part of a series of questions that present the same scenario. Each question in the series contains a unique solution that might meet the stated goals. Some question sets might have more than one correct solution, while others might not have a correct solution. After you answer a question in this section, you will NOT be able to return to it. As a result, these questions will not appear in the review screen. Your network contains an Active Directory domain named contoso.com. The domain contains the users shown in the following table.

Name	Member of
User2	Domain Users
User3	Domain Admins
User4	Server Operators

You have a computer named Computer1 that runs Windows 10 and is in a workgroup.

A local standard user on Computer1 named User1 joins the computer to the domain and uses the credentials of User2 when prompted.

You need to ensure that you can rename Computer1 as Computer33. Solution: You use the credentials of User3 on Computer1.

Does this meet the goal?

- A. Yes  
B. No

**Answer:** A

**Explanation:**

Renaming a domain-joined computer will also rename the computer account in the domain. To do this, you need domain administrator privileges.

User3 is a domain administrator. References:

<https://docs.microsoft.com/en-us/windows/security/identity-protection/access-control/active-directory-security-g>

**NEW QUESTION 28**

- (Exam Topic 4)

You plan to install Windows 10 Pro by using an answer file. You open Windows System Image Manager.

You need to create an answer file. What should you do first?

- A. Open the Install.wim file from the Windows 10 installation media.  
B. Open the Boot.wim file from the Windows 10 installation media.  
C. Install the WinPE add-on for the Windows Assessment and Deployment Kit (Windows ADK).  
D. Install the Windows Assessment and Deployment Kit (Windows ADK).

**Answer:** C

**NEW QUESTION 30**

- (Exam Topic 4)

You deploy Windows 10 to a new computer named Computer1. You sign in to Computer1 and create a user named User1.

You create a file named LayoutModification.xml in the C:\Users\Default\AppData\Local\Microsoft\Windows\Shell\ folder. LayoutModification.xml contains the following markup.

```
<?xml version="1.0" encoding="utf-8"?>
<LayoutModificationTemplate
  xmlns="http://schemas.microsoft.com/Start/2014/LayoutModification"
  xmlns:defaultlayout="http://schemas.microsoft.com/Start/2014/FullDefaultLayout"
  xmlns:start="http://schemas.microsoft.com/Start/2014/StartLayout"
  xmlns:taskbar="http://schemas.microsoft.com/Start/2014/TaskbarLayout"
  Version="1">
  <CustomTaskbarLayoutCollection>
    <defaultlayout:TaskbarLayout>
      <taskbar:TaskbarPinList>
        <taskbar:DesktopApp DesktopApplicationLinkPath="%ALLUSERSPROFILE%\Microsoft\Windows
\Start Menu\Programs\Accessories\Paint.lnk" />
      </taskbar: TaskbarPinList>
    </defaultlayout:TaskbarLayout>
  </CustomTaskbarLayoutCollection>
</LayoutModificationTemplate>
```

What is the effect of the configuration? To answer, select the appropriate options in the answer area.

NOTE: Each correct selection is worth one point.

When you sign in to Computer1, the taskbar will contain:

☐ Default apps only

☐ Default apps and Microsoft Paint

☐ Microsoft Paint only

When User1 signs in to Computer1, the taskbar will contain:

☐ Default apps only

☐ Default apps and Microsoft Paint

☐ Microsoft Paint only

A. Mastered



B. Not Mastered

Answer: A

Explanation:

References:

<https://docs.microsoft.com/en-us/windows/configuration/configure-windows-10-taskbar>

NEW QUESTION 32

- (Exam Topic 4)

You have a computer named Computer1 that has the following configurations:

- RAM: 4 GB
- CPU: 1.6 GHz
- Hard drive: 128 GB
- Operating system: Windows 10 Pro in S mode

You need to upgrade Computer1 to Windows 11. What should you do first?

- A. Increase the amount of RAM.
- B. Increase the storage capacity of the hard drive.
- C. Switch out of S mode.
- D. Upgrade the CPU.

Answer: C

NEW QUESTION 33

- (Exam Topic 4)

You have computers that run Windows 11 as shown in the following table.

Name	IP address	Joined to
Computer1	192.168.10.10	Active Directory
Computer2	192.168.10.15	Workgroup

You ping 192.168.10.15 from Computer1 and discover that the request timed out. You need to ensure that you can successfully ping 192.168.10.15 from Computer 1.

Solution: On Computer2, you allow incoming ICMFV6 traffic in Windows Defender Firewall. Does this meet the goal?

- A. Yes
- B. No

Answer: A

NEW QUESTION 35

- (Exam Topic 4)

You have 100 computers that run Windows 10. You have no servers. All the computers are joined to Microsoft Azure Active Directory (Azure AD).

The computers have different update settings, and some computers are configured for manual updates. You need to configure Windows Update. The solution must meet the following requirements:

- > The configuration must be managed from a central location.
- > Internet traffic must be minimized.
- > Costs must be minimized.

How should you configure Windows Update? To answer, select the appropriate options in the answer area. NOTE: Each correct selection is worth one point.

Windows Update technology to use:

Windows Server Update Services (WSUS)

Microsoft System Center Configuration Manager

Windows Update for Business

Manage the configuration by using:

A Group Policy object (GPO)

Microsoft System Center Configuration Manager

Microsoft Intune

Manage the traffic by using:

Delivery Optimization

BranchCache

Peer cache

- A. Mastered
- B. Not Mastered

Answer: A

Explanation:

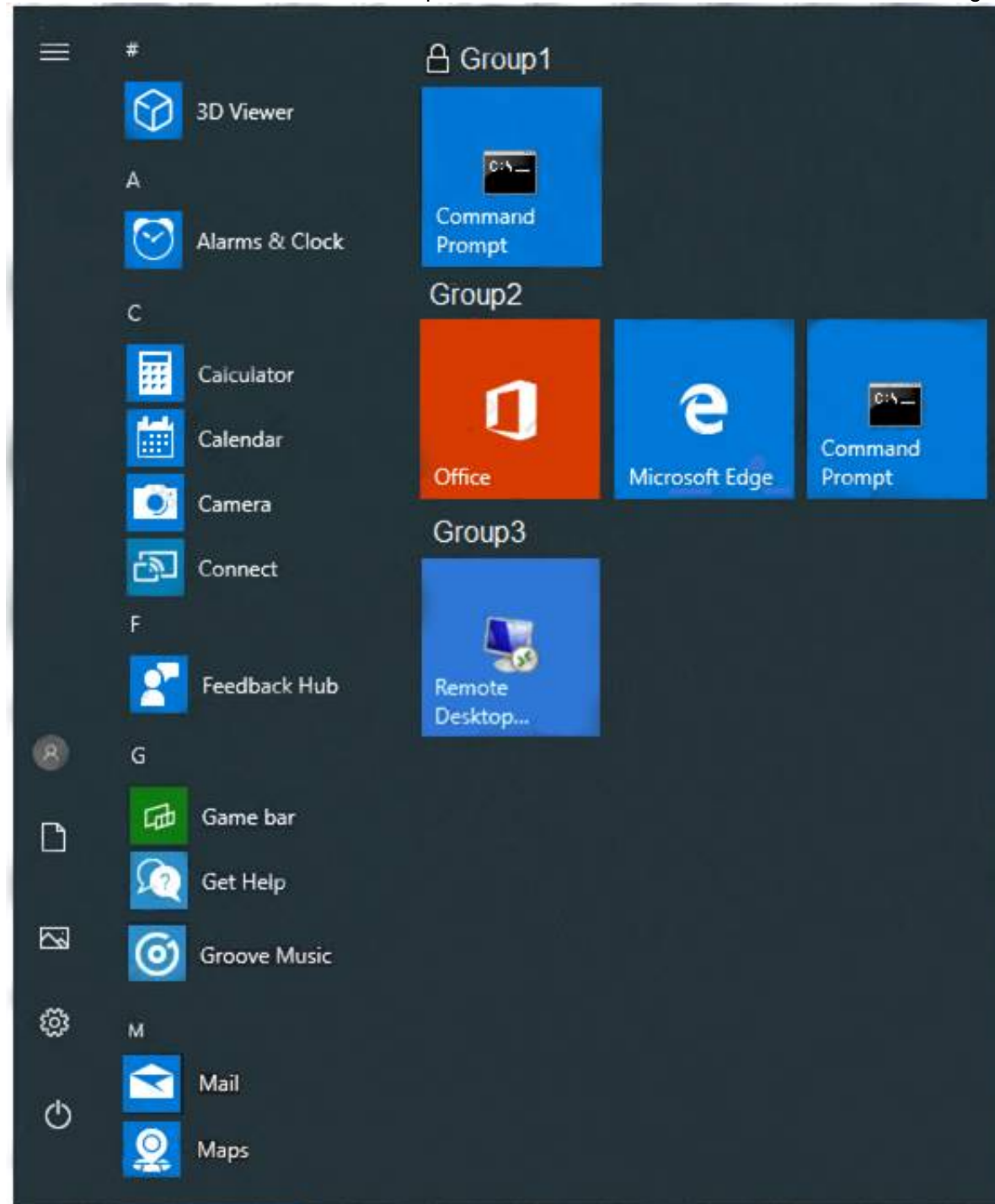
References:

<https://docs.microsoft.com/en-us/windows/deployment/update/waas-optimize-windows-10-updates> <https://docs.microsoft.com/en-us/windows/deployment/update/waas-delivery-optimization>

### NEW QUESTION 38

- (Exam Topic 4)

You customize the Start menu on a computer that runs Windows 10 as shown in the following exhibit.



You need to add Remote Desktop Connection to Group1 and remove Group3 from the Start menu. Which two actions should you perform from the Start menu customizations? Each correct answer presents part of the solution. NOTE: Each correct selection is worth one point.

- A. Unlock Group1.
- B. Remove Command Prompt from Group1.
- C. Delete Group3.
- D. Add Remote Desktop Connection to Group1.
- E. Rename Group3 as Group1.

**Answer: AD**

### NEW QUESTION 43

- (Exam Topic 4)

You are troubleshooting Windows 10 updates that fail to install on a computer that runs Windows 10. You delete the contents of the SoftwareDistribution folder. You need to delete the signatures of the Windows Update packages. Which folder should you delete?

- A. %systemroot%\system32\catroot2
- B. %systemdrive%\recovery
- C. %systemroot%\WinSxS
- D. %systemdrive%\System Volume Information

**Answer: A**

#### Explanation:

References:

<https://tipsmake.com/how-to-delete-pending-updates-on-windows-10>

### NEW QUESTION 45

- (Exam Topic 4)

You deploy Windows 10 to several computers. The computers will be used by users who frequently present their desktop to other users.

You need to prevent applications from generating toast notifications in the notification area. Which settings should you configure from the Settings app?

- A. Shared experiences
- B. Privacy
- C. Focus assist
- D. Tablet mode

**Answer:** C

**Explanation:**

Focus Assist will automatically hide incoming notifications, so they don't pop up and distract you while you're playing a game, giving a presentation, or using a full-screen application.

**NEW QUESTION 47**

- (Exam Topic 4)

You have a computer named Computer1. Computer1 runs Windows 10 Pro.

You have a mobile device. You use Bluetooth to pair the mobile device to Computer1. You want to enable dynamic lock on Computer1.

What should you do?

To complete this task, sign in to the required computer or computers.

- A. Mastered
- B. Not Mastered

**Answer:** A

**Explanation:**

➤ On Computer1, select the Start button > Settings > Accounts > Sign-in options.

➤ Under Dynamic lock, select the Allow Windows to automatically lock your device when you're away check box.

Reference:

<https://support.microsoft.com/en-za/help/4028111/windows-lock-your-windows-10-pc-automatically-when-you>

**NEW QUESTION 50**

- (Exam Topic 4)

You have a computer named Computer1 that runs Windows 10.

You restart Computer1 by using Advanced startup and select Boot log.

In which folder is the boot log file stored?

- A. C:\
- B. C:\Windows
- C. C:\Windows\debug
- D. C:\Windows\System32\LogFiles

**Answer:** B

**Explanation:**

Reference:

<https://winaero.com/enable-boot-log-windows-10/>

**NEW QUESTION 54**

- (Exam Topic 4)

You have 10 computers that run Windows 10 and have BitLocker Drive Encryption (BitLocker) enabled. You plan to update the firmware of the computers.

You need to ensure that you are not prompted for the BitLocker recovery key on the next restart. The drive must be protected by BitLocker on subsequent restarts.

Which cmdlet should you run?

- A. Unlock-BitLocker
- B. Disable-BitLocker
- C. Add-BitLockerKeyProtector
- D. Suspend-BitLocker

**Answer:** D

**Explanation:**

References:

<https://support.microsoft.com/en-us/help/4057282/bitlocker-recovery-key-prompt-after-surface-uefi-tpm-firmwa>

**NEW QUESTION 59**

- (Exam Topic 4)

You have a computer that runs Windows 10 and contains the folders shown in the following table.

Name	Path
FolderA	C:\FolderA
FolderB	C:\FolderA\FolderB
FolderC	C:\FolderA\FolderB\FolderC

You create the groups shown in the following table.



Name	Members
Group1	User1, User2
Group2	User2, User3
Group3	User1, User3

On FolderA, you remove permission inheritance. To each folder, you assign the NTFS permissions shown in the following table.

Folder	Permission
FolderA	Modify to Group1 Read to Group2
FolderB	Write to Group2
FolderC	Read to Group3

For each of the following statements, select Yes if the statement is true. Otherwise, select No.

NOTE: Each correct selection is worth one point.

Statements	Yes	No
User1 can read and write all files in FolderC.	<input type="radio"/>	<input type="radio"/>
User2 can delete all files in FolderB.	<input type="radio"/>	<input type="radio"/>
User3 can delete all files in FolderC.	<input type="radio"/>	<input type="radio"/>

- A. Mastered
- B. Not Mastered

Answer: A

Explanation:

YES YES NO

#### NEW QUESTION 60

- (Exam Topic 4)

Your network contains an Active Directory domain. The domain contains the users shown in the following table.

Name	Member of
User1	Domain Admins
User2	Backup Operators

The domain contains a computer named Computer1. Computer1 contains the users shown in the following table.

Name	Member of
User3	Administrators
User4	Users

On Computer1, you create a restore point named RP1.

Which users can restore RP1 on Computer1? To answer, select the appropriate options in the answer area.

NOTE: Each correct selection is worth one point.

#### Answer Area

Can restore RP1 on Computer1 while Windows is running:

User3 only
User1 and User3 only
User3 and User4 only
User1, User2, and User3 only
User1, User3, and User4 only

Can restore RP1 if Computer1 restarts by using Advanced startup:

User3 only
User1 and User3 only
User3 and User4 only
User1, User2, and User3 only
User1, User3, and User4 only

- A. Mastered
- B. Not Mastered

**Answer:** A

**Explanation:**

Graphical user interface, text, application Description automatically generated

Reference:

[https://ss64.com/nt/syntax-security\\_groups.html](https://ss64.com/nt/syntax-security_groups.html)

**NEW QUESTION 62**

- (Exam Topic 4)

You plan to deploy Windows 10 Enterprise to company-owned devices. You capture a Windows 10 image file from a reference device.

You need to generate catalog files and answer files for the deployment.

What should you use for each file? To answer, select the appropriate options in the answer area.

NOTE: Each correct selection is worth one point.

Catalog file:

Deployment Image Servicing and Management (DISM)
Windows Configuration Designer
Windows Deployment Services (WDS)
Windows System Image Manager (Windows SIM)

Answer file:

Deployment Image Servicing and Management (DISM)
Windows Configuration Designer
Windows Deployment Services (WDS)
Windows System Image Manager (Windows SIM)

- A. Mastered
- B. Not Mastered

**Answer:** A

**Explanation:**

Graphical user interface, text, application Description automatically generated

References:

<https://docs.microsoft.com/en-us/windows-hardware/customize/desktop/wsim/open-a-windows-image-or-catalo>

**NEW QUESTION 66**

- (Exam Topic 4)

You are a network administrator at your company.

A user attempts to start a computer and receives the following error message: "Bootmgr is missing." You need to resolve the issue.

You start the computer in recovery mode.

Which command should you run next? To answer, select the appropriate options in the answer area.

NOTE: Each correct selection is worth one point.

▼
Bootrec
Diskpart
Sfc

▼
/FixMbr
/RebuildBcd
/ScanNow
/offbootdir

- A. Mastered
- B. Not Mastered

**Answer:** A

**Explanation:**

References: [https://neosmart.net/wiki/bootrec/#Bootrec\\_in\\_Windows10](https://neosmart.net/wiki/bootrec/#Bootrec_in_Windows10)

**NEW QUESTION 71**

- (Exam Topic 4)

You have a computer named Client1 that runs Windows 10 and has Windows Sandbox enabled. You need to create a Windows Sandbox configuration file.

How should you format the file, and which file extension should you use? To answer, select the appropriate options in the answer area.

NOTE: Each correct selection is worth one point.

## Answer Area

Format:

Extension:

- A. Mastered
- B. Not Mastered

**Answer:** A

**Explanation:**  
**Answer Area**

Format:

Extension:

## NEW QUESTION 72

- (Exam Topic 4)

Your network contains an Active Directory domain. All users have been issued with new computers that run Windows 10 Enterprise. All users have Microsoft 365 E3 licenses.

A user named Mia Hamm has an Active Directory user account named MHammm and a computer named Computer1. Mia Hamm reports that Computer1 is not activated.

You need to ensure that Mia Hamm can activate Computer1. What should you do?

- A. Assign a Windows 10 Enterprise license to MHammm, and then activate Computer1.
- B. From the Microsoft Deployment Toolkit (MDT), redeploy Computer1.
- C. From System Properties on Computer1, enter a Volume License Key, and then activate Computer1.
- D. Instruct Mia Hamm to perform a local AutoPilot Reset on Computer1, and then activate Computer1.

**Answer:** C

## NEW QUESTION 76

- (Exam Topic 4)

You have a file named Reg1.reg that contains the following content.

```
Windows Registry Editor Version 5.00
```

```
[HKEY_CLASSES_ROOT\Directory\Background\shell\Notepad]
```

```
[HKEY_CLASSES_ROOT\Directory\Background\shell\Notepad\command]
```

```
@="notepad.exe"
```

What is the effect of importing the file?

- A. A key named command will be renamed as notepad.exe.
- B. In a key named Notepad, the command value will be set to @="notepad.exe".
- C. In a key named command, the default value will be set to notepad.exe.

**Answer:** C

## NEW QUESTION 79

- (Exam Topic 4)

You are a network administrator at your company.

The company uses an application that checks for network connectivity to a server by sending a ping request to the IPv6 address of the server replies, the application loads.

A user cannot open the application.

You manually send the ping request from the computer of the user and the server does not reply. You send the ping request from your computer and the server replies.

You need to ensure that the ping request works from the user's computer. Which Windows Defender firewall rule is a possible cause of the issue?

- A. File and Printer Sharing (NB-Datagram-In)
- B. File and Printer Sharing (Echo request ICMPv6-Out)
- C. File and Printer Sharing (NB-Datagram-Out)
- D. File and Printer Sharing (Echo Request ICMPv6-In)

**Answer: B**

#### NEW QUESTION 83

- (Exam Topic 4)

You have an Azure Active Directory (Azure AD) tenant named contoso.com. You have a workgroup computer named Computer1 that runs Windows 10. You need to add Computer1 to contoso.com.

What should you use?

- A. Computer Management
- B. dsregcmd.exe
- C. the Settings app
- D. netdom.exe

**Answer: C**

#### Explanation:

You join a computer to a domain, including an Azure AD domain in the Settings panel in Windows 10, under System->About

References: <https://aadguide.azurewebsites.net/aadjoin/>

#### NEW QUESTION 87

- (Exam Topic 4)

Your network contains an Active Directory domain. The domain contains the users shown in the following table.

Name	Member of
User1	Group1
User2	Group1, Group2
User3	Group2

The domain contains a computer named Computer1 that runs Windows 10. Computer1 contains a folder named Folder1 that has the following permissions:

- > User2: Deny Write
- > Group1: Allow Read
- > Group2: Allow Modify

Folder1 is shared as Share1\$. Share1\$ has the following configurations:

- > Everyone: Allow Full control
- > Access-based enumeration: Enabled

For each of the following statements, select Yes if the statement is true. Otherwise, select No.

NOTE: Each correct selection is worth one point.

#### Statements

User1 can list files in \\Computer1\Share1\$.

Yes

No

☐
☐

User2 can list files in \\Computer1\Share1\$.

☐
☐

If User3 connects to \\Computer1 from File Explorer, Share1\$ will be visible.

☐
☐

- A. Mastered
- B. Not Mastered

**Answer: A**

#### Explanation:

YES, YES, NO

References:

<https://www.varonis.com/blog/ntfs-permissions-vs-share/>

<http://www.ntfs.com/ntfs-permissions-file-advanced.htm>

<https://docs.microsoft.com/en-us/windows-server/storage/dfs-namespaces/enable-access-based-enumeration-on>

#### NEW QUESTION 91

- (Exam Topic 4)



You are planning a recovery strategy for computers that run Windows 10.

You need to create recovery procedures to roll back feature updates and quality updates.

What should you include in the procedures? To answer, select the appropriate options in the answer area. NOTE: Each correct selection is worth one point.

To roll back feature updates:

▼

Recovery from the Settings app
Windows Update from the Settings app
Programs and Features from the Control Panel
Troubleshoot from the Settings app

To roll back quality updates:

▼

Recovery from the Settings app
Windows Update from the Settings app
Programs and Features from the Control Panel
Troubleshoot from the Settings app

- A. Mastered
- B. Not Mastered

**Answer:** A

**Explanation:**

References:

<https://www.thewindowsclub.com/rollback-uninstall-windows-10-creators-update> <https://www.dummies.com/computers/pcs/undo-windows-update/>

#### NEW QUESTION 95

- (Exam Topic 4)

You have a computer named Computer1 that runs Windows 10. You need to enable boot logging on Computer1.

What should you do?

- A. At a command prompt, run the bcdboot.exe command and specify the /v parameter.
- B. From the Settings app, configure the Start settings.
- C. From System Properties in Control Panel, configure the Startup and Recovery settings.
- D. From System Configuration configure the Boot settings.

**Answer:** D

**Explanation:**

Reference:

<https://www.windowcentral.com/how-enable-boot-log-windows-10>

#### NEW QUESTION 97

- (Exam Topic 4)

Note: This question is part of series of questions that present the same scenario. Each question in the series contains a unique solution that might meet the stated goals Some question sets might have more than one correct solution, while others might not have a correct solution.

After you answer a question In this section, you will NOT be able to return to it. As a result these question will not appear In the review screen.

You have two computers named Computer1 and Computer2 that run Windows 10.

You have an Azure Active Directory (Azure AD) user account named admin@contoso.com that is m the local Administrators group on each computer.

You sign m to Compute1 by using admin@contoso.com.

You need to ensure that you can use Event Viewer on Computer1 to connect to the event logs on Computer?.

Solution: On Computer2, you create a Windows Defender Firewall rule that allows eventwr.exe. Does this meet the goal?

- A. Yes
- B. No

**Answer:** B

#### NEW QUESTION 99

- (Exam Topic 4)

You have a computer named Computer1 that runs Windows 10.

The relevant services on Computer1 are shown in the following table.

Name	Startup type	Status	Dependent on
Service1	Automatic	Stopped	Service2, Service3
Service2	Automatic	Stopped	Service6
Service3	Disabled	Running	None
Service4	Disabled	Stopped	Service5
Service5	Automatic	Running	None
Service6	Manual	Stopped	None

Which service will start after you restart Computer1?



- A. Service3 and Services only
- B. Service 1, Setvice2. and Services
- C. Service2, Services, and Service6
- D. Services only

Answer: C

Explanation:

Service1 cannot start because it is dependent on Service3 which is disabled.  
Service2 will start because it is set to Automatic. Service2 starting will cause Service6 to start. Service3 will not start because it is disabled.  
Service4 will not start because it is disabled.  
Service5 will start because it is set to Automatic and is not dependent on any other services. Service6 will start because Service2 is dependent on Service6.

NEW QUESTION 104

- (Exam Topic 4)  
You have a computer named Client1 that runs Windows 11 Home. You need to ensure that you can create virtual machines on Client1.  
Which four actions should you perform in sequence? To answer, move the appropriate actions from the list of actions to the answer area and arrange them in the correct order.

Actions

Restart the operating system

Enter a Windows 11 Pro product key

Enter a Windows 11 Enterprise product key

From Programs and Features, enable the Hyper-V Windows feature

From the Activation settings in the Settings app, select **Change product key**

Answer Area

>

<

- A. Mastered
- B. Not Mastered

Answer: A

Explanation:

Graphical user interface, application Description automatically generated

NEW QUESTION 105

- (Exam Topic 4)  
You have a computer that runs Windows 10. You view the domain services status as shown in the following exhibit.

```

+-----+
| Device state |
+-----+

AzureAdJoined : YES
EnterpriseJoined : NO
DeviceId : 0779e134-8056-482b-8922-f5b1d2bf3b98
Thumbprint : 7463D0D1A8570055738E486ADD9A3A12E94F49AD
KeyContainerId : 847ec2a4-cb0f-48e8-ae5e-e25b10492e7c
KeyProvider : Microsoft Software Key Storage Provider
TpmProtected : NO
KeySignTest : MUST Run elevated to test.
Idp : login.windows.net
TenantId : 2f01a8b6-767b-4303-9797-30aff86e10da
TenantName : Tailspin Toys
AuthCodeUrl : https://login.microsoftonline.com/2f01a8b6-767b-4303-9797-30aff86e10da/oauth2/authorize
AccessTokenUrl : https://login.microsoftonline.com/2f01a8b6-767b-4303-9797-30aff86e10da/oauth2/token
MdmUrl : https://enrollment.manage.microsoft.com/enrollmentserver/discovery.svc
MdmTouUrl : https://portal.manage.microsoft.com/TermsOfUse.aspx
MdmComplianceUrl : https://portal.manage.microsoft.com/?portalAction=Compliance
SettingsUrl :
JoinSrvVersion : 1.0
JoinSrvUrl : https://enterpriseregistration.windows.net/EnrollmentServer/device/
JoinSrvId : urn:ms-drs:enterpriseregistration.windows.net
KeySrvVersion : 1.0
KeySrvUrl : https://enterpriseregistration.windows.net/EnrollmentServer/key/
KeySrvId : urn:ms-drs:enterpriseregistration.windows.net
WebAuthNSrvVersion : 1.0
WebAuthNSrvUrl : https://enterpriseregistration.windows.net/webauthn/2f01a8b6-767b-4303-9797-30aff86e10da/
WebAuthNSrvId : urn:ms-drs:enterpriseregistration.windows.net
DeviceManagementSrvVersion : 1.0
DeviceManagementSrvUrl : https://enterpriseregistration.windows.net/manage/2f01a8b6-767b-4303-9797-30aff86e10da/
DeviceManagementSrvId : urn:ms-drs:enterpriseregistration.windows.net
DomainJoined : NO

+-----+
| User state |
+-----+

NgcSet : YES
NgcKeyId : {E8AAE4EB-55B0-4CE4-9971-684848BF72FA}
CanReset : DestructiveOnly
WorkplaceJoined : NO
WamDefaultSet : YES
WamDefaultAuthority : organizations
WamDefaultId : https://login.microsoft.com
WamDefaultGUID : {B16898C6-A148-4967-9171-64D755DA8520} (AzureAd)
AzureAdPrt : YES
AzurePrtAuthority : https://login.microsoftonline.com/2f01a8b6-767b-4303-9797-30aff86e10da
EnterprisePrt : NO
EnterprisePrtAuthority :

```

Use the drop-down menus to select the answer choice that completes each statement based on the information presented in the graphic.  
 NOTE: Each correct selection is worth one point.

### Answer Area

Microsoft Edge is configured by using [answer choice].

▼

- a Group Policy object (GPO)
- Microsoft Intune
- the Internet Explorer Administration Kit (IEAK)

The computer is [answer choice].

▼

- enrolled in Microsoft Intune
- managed by using Endpoint Configuration Manager
- joined to an on-premises Active Directory domain

- A. Mastered
- B. Not Mastered

Answer: A

### Explanation:

Device is Azure AD joined; not domain joined.

The MDM URLs in the exhibit indicate the device is enrolled in Intune. References:

<https://docs.microsoft.com/en-us/azure/active-directory/devices/troubleshoot-device-dsregcmd>

<https://github.com/MicrosoftLearning/MD-101T00-ManagingModernDesktops/blob/master/Instructions/Labs/04>

### NEW QUESTION 108

- (Exam Topic 4)

Your network contains an Active Directory domain. The domain contains the computers shown in the following table.

Name	Operating system
Computer1	Windows 10 Enterprise
Computer2	Windows 10 Pro
Computer3	Windows 10 Pro

Microsoft Defender Application Guard is installed on the computers.

Application Guard Group Policy settings are applied to the computers as shown in the following table.

Setting	State
Turn on Windows Defender Application Guard in Managed Mode	Enabled
Configure Windows Defender Application Guard clipboard settings	Enabled
Allow files to download and save to the host operating system from Windows Defender Application Guard	Enabled

For each of the following statements, select Yes if the statement is true. Otherwise, select No. NOTE: Each correct selection is worth one point.

Answer Area

Statements

Yes

No

Computer1 can use Application Guard in Enterprise-managed mode.

Computer2 can copy clipboard settings from Microsoft Edge to Application Guard.

Computer3 can download files from Application Guard to the host operating system.

- A. Mastered
- B. Not Mastered

Answer: A

Explanation:

Answer Area

Statements

Yes

No

Computer1 can use Application Guard in Enterprise-managed mode.

Computer2 can copy clipboard settings from Microsoft Edge to Application Guard.

Computer3 can download files from Application Guard to the host operating system.

NEW QUESTION 110

- (Exam Topic 4)

You are troubleshooting the network connectivity of a computer that runs Windows 10. The computer is connected physically to the network but rejects network traffic from an external source. You need to reinstall the TCP/IP stack on the computer. What should you run?

- A. the `necsh int ip resec` command
- B. the `Resec-NetAdapcerAdvancedPropercy` cmdlet
- C. the `netcf g -d` command
- D. the `Debug-NetworkController` cmdlet

Answer: A

Explanation:

Reference: <https://howtofix.guide/reset-tcp-ip/>

NEW QUESTION 111

- (Exam Topic 4)

You have a computer that runs Windows 11 and has Windows Sandbox enabled. You need to configure a Windows Sandbox environment. The solution must meet the following requirements:

- Support a virtual GPU.
- Mount the `C:\Temp` folder as read only.
- Prevent users from copying files to the sandbox by using the clipboard.

How should you complete the configuration file? To answer, drag the appropriate values to the correct targets. Each value may be used once, more than once, or not at all. You may need to drag the split bar between panes or scroll to view content.



#### Values


#### Answer Area

```
<Configuration>
  <VGpu>  </VGpu>
  <Networking>Disable</Networking>
  <MappedFolders>
    <MappedFolder>
      <HostFolder>C:\temp</HostFolder>
      <ReadOnly>  </ReadOnly>
    </MappedFolder>
  </MappedFolders>
  <LogonCommand>
    <Command>C:\users\WDAGUtilityAccount\Desktop\Temp\startup.cmd</Command>
  </LogonCommand>
  <ProtectedClient>  </ProtectedClient>
  <ClipboardRedirection>Default</ClipboardRedirection>
  <MemoryInMB>6144</MemoryInMB>
</Configuration>
```

- A. Mastered  
 B. Not Mastered

Answer: A

Explanation:

#### Answer Area

```
<Configuration>
  <VGpu>  </VGpu>
  <Networking>Disable</Networking>
  <MappedFolders>
    <MappedFolder>
      <HostFolder>C:\temp</HostFolder>
      <ReadOnly>  </ReadOnly>
    </MappedFolder>
  </MappedFolders>
  <LogonCommand>
    <Command>C:\users\WDAGUtilityAccount\Desktop\Temp\startup.cmd</Command>
  </LogonCommand>
  <ProtectedClient>  </ProtectedClient>
  <ClipboardRedirection>Default</ClipboardRedirection>
  <MemoryInMB>6144</MemoryInMB>
</Configuration>
```

#### NEW QUESTION 114

- (Exam Topic 4)

Your network contains an Active Directory domain named adatum.com. The domain contains two computers named Computer1 and Computer2 that run Windows 10.

The domain contains the user accounts shown in the following table.

Name	Member of
User1	Domain Admins
User2	Domain Users
User3	Domain Users

Computer2 contains the local groups shown in the following table.

Name	Members
Group1	ADATUM\User2 ADATUM\User3
Group2	ADATUM\User2
Group3	ADATUM\User3
Administrators	ADATUM\Domain Admins ADATUM\User3
Remote Desktop Users	Group1

The relevant user rights assignments for Computer2 are shown in the following table.

Policy	Security Setting
Allow log on through Remote Desktop Services	Administrators, Remote Desktop Users
Deny log on through Remote Desktop Services	Group2
Deny log on locally	Group3

For each of the following statements, select Yes if the statement is true. Otherwise, select No.

NOTE: Each correct selection is worth one point.

Statements	Yes	No
User1 can establish a Remote Desktop session to Computer2.	<input type="radio"/>	<input type="radio"/>
User2 can establish a Remote Desktop session to Computer2.	<input type="radio"/>	<input type="radio"/>
User3 can establish a Remote Desktop session to Computer2.	<input type="radio"/>	<input type="radio"/>

- A. Mastered
- B. Not Mastered

**Answer:** A

**Explanation:**

Box 1: Yes

User1 is an administrator and has the Allow log on through Remote Desktop Services.

Box 2: No

User2 is a member of Group2 which has the Deny log on through Remote Desktop Services. Box 3: Yes

User3 is a member of the administrators group and has the Allow log on through Remote Desktop Services.

Note: Deny permissions take precedence over Allow permissions. If a user belongs to two groups, and one of them has a specific permission set to Deny, that user is not able to perform tasks that require that permission even if they belong to a group that has that permission set to Allow.

References:

<https://docs.microsoft.com/en-us/azure/devops/organizations/security/about-permissions?view=azure-devops&ta>

**NEW QUESTION 115**

- (Exam Topic 4)

You have a computer named Computer1. Computer1 runs Windows 10 Pro. You attempt to start Computer1 but you receive the following error message: Bootmgr is missing.

You need to be able to start Computer1.

What should you do?

- A. Start the computer in recovery mode and run the boocrec /rebuildbcd command.
- B. Start the computer in recovery mode and run the dislcparr /repair command.
- C. Start the computer in recovery mode and run the bcdboot /s command.
- D. Start the computer in recovery mode and run the booccfg /debug command.

**Answer:** A

**Explanation:**

Reference:

<https://neosmart.net/wiki/bootmgr-is-missing/>

**NEW QUESTION 118**

- (Exam Topic 4)

You have an app named App1 that uses an on-premises Microsoft SQL Server database named DB1. You plan to migrate DB1 to an Azure SQL managed



instance.

You need to enable customer-managed Transparent Data Encryption (TDE) for the instance. The solution must maximize encryption strength. Which type of encryption algorithm and key length should you use for the TDE protector?

- A. RSA2048
- B. RSA4096
- C. RSA3072
- D. AES256

**Answer: D**

#### NEW QUESTION 119

- (Exam Topic 4)

You have computers that run Windows 11 as shown in the following table.

Name	IP address	Joined to
Computer1	192.168.10.10	Active Directory
Computer2	192.168.10.15	Workgroup

You ping 192.168.10.15 from Computer1 and discover that the request timed out. You need to ensure that you can successfully ping 192.168.10.15 from Computer.

Solution: On Computer2, you share a folder. Does this meet the goal?

- A. Yes
- B. No

**Answer: B**

#### NEW QUESTION 121

- (Exam Topic 4)

Please wait while the virtual machine loads. Once loaded, you may proceed to the lab section. This may take a few minutes, and the wait time will not be deducted from your overall test time.

When the Next button is available, click it to access the lab section. In this section, you will perform a set of tasks in a live environment. While most functionality will be available to you as it would be in a live environment, some functionality (e.g., copy and paste, ability to navigate to external websites) will not be possible by design.

Scoring is based on the outcome of performing the tasks stated in the lab. In other words, it doesn't matter how you accomplish the task, if you successfully perform it, you will earn credit for that task.

Labs are not timed separately, and this exam may more than one lab that you must complete. You can use as much time as you would like to complete each lab.

But, you should manage your time appropriately to ensure that you are able to complete the lab(s) and all other sections of the exam in the time provided.

Please note that once you submit your work by clicking the Next button within a lab, you will NOT be able to return to the lab.

Username and password



Use the following login credentials as needed:

To enter your password, place your cursor in the Enter password box and click on the password below.

Username: Contoso/Administrator

Password: Passw0rd!

The following information is for technical support purposes only: Lab Instance: 11145882

**WELCOME TO SERVER MANAGER**

**1 Configure this local server**

- 2 Add roles and features
- 3 Add other servers to manage
- 4 Create a server group
- 5 Connect this server to cloud services

**ROLES AND SERVER GROUPS**  
 Roles: 3 | Server groups: 1 | Servers total: 1

**AD DS** 1

- Manageability
- Events
- Services
- Performance
- BPA results

**DNS** 1

- Manageability
- Events
- Services
- Performance
- BPA results

**File and Storage Services** 1

- Manageability
- Events
- Services
- Performance
- BPA results

**Local Server** 1

- Manageability
- Events
- 2 Services
- Performance
- BPA results

1/23/2020 9:30 PM

**All Servers** 1

- Manageability
- Events
- 2 Services
- Performance
- BPA results

1/23/2020 9:30 PM

**Tasks** **Computers**



Users who attempt to sign in to the domain from Client3 report that the sign-ins fail. You need to resolve the issue. To complete this task, sign in to the required computer or computers.

- A. Mastered
- B. Not Mastered

**Answer: A**

**Explanation:**

- Use a local administrator account to log on to the computer.
- Select Start, press and hold (or right-click) Computer > Properties.
- Select Change settings next to the computer name.
- On the Computer Name tab, select Change.
- Under the Member of heading, select Workgroup, type a workgroup name, and then select OK.

- > When you are prompted to restart the computer, select OK.
- > On the Computer Name tab, select Change again.
- > Under the Member of heading, select Domain, and then type the domain name.
- > Select OK, and then type the credentials of the user who has permissions in the domain.
- > When you are prompted to restart the computer, select OK.
- > Restart the computer.

Reference:  
<https://support.microsoft.com/en-us/help/2771040/the-trust-relationship-between-this-workstation-and-the-prima>

NEW QUESTION 126

- (Exam Topic 4)  
You have two computers named Client1 and Client2 that run Windows 10. You perform the following actions on Client1:

- Enable Hyper-V.
- Create a virtual machine named VM1 that runs Windows 10 Pro.
- Install a Microsoft SQL Server 2019 instance on VM1. You plan to deploy a copy of VM1 to Client2.

You need to create an export of VM1. The solution must ensure that the captured state is transactional^ consistent.  
Which three PowerShell commands should you run in sequence on Client1? To answer, move the appropriate cmdlets from the list of cmdlets to the answer area and arrange them in the correct order.

Commands

Get-VMCheckpoint -VMName VM1

Set-VM -Name VM1 -CheckpointType Production

Checkpoint-VM Name VM1

Restore-VMCheckpoint -Name VM1Checkpoint -Confirm:\$false

Export-VMCheckpoint -VMName VM1 -Name VM1Checkpoint -Path C:\Export

Answer Area

1

2

3

- A. Mastered
- B. Not Mastered

Answer: A

Explanation:

Commands

Get-VMCheckpoint -VMName VM1

Set-VM -Name VM1 -CheckpointType Production

Checkpoint-VM Name VM1

Restore-VMCheckpoint -Name VM1Checkpoint -Confirm:\$false

Export-VMCheckpoint -VMName VM1 -Name VM1Checkpoint -Path C:\Export

Answer Area

Checkpoint-VM Name VM1

Restore-VMCheckpoint -Name VM1Checkpoint -Confirm:\$false

Export-VMCheckpoint -VMName VM1 -Name VM1Checkpoint -Path C:\Export

NEW QUESTION 129

- (Exam Topic 4)  
Your network contains an Active Directory domain. All users have been issued with computers that run Windows 8.1.  
A user named Mia Hamm has a computer named Computer1. You upgrade Computer1 to Windows 10 by performing a clean installation of Windows 10 without formatting the drives.  
You need to migrate the settings for Mia Hamm from Windows 8.1 to Windows 10. Which two actions should you perform?  
NOTE: Each correct selection is worth one point.

- A. Run scanstate.exe and specify the C:\Users folder
- B. Run loadstate.exe and specify the C:\Windows.old folder
- C. Run usmultils.exe and specify the C:\Users folder
- D. Run scanstate.exe and specify the C:\Windows.old folder
- E. Run loadstate.exe and specify the C:\Users folder
- F. Run usmultils.exe and specify the C:\Windows.old folder

Answer: DE

Explanation:  
D: As we have performed a clean installation of Windows 10 without formatting the drives, User1's Windows 8.1 user profile will be located in the \Windows.old



folder. Therefore, we need to run scanstate.exe on the \Windows.old folder.

E: User1's Windows 10 profile will be in the C:\Users folder so we need to run loadstate.exe to apply the changes in the C:\Users folder.

Reference:

<https://docs.microsoft.com/en-us/windows/deployment/usmt/usmt-how-it-works>

<https://docs.microsoft.com/en-us/windows/deployment/usmt/usmt-common-migration-scenarios#bkmk-fourpcrc>

### NEW QUESTION 133

- (Exam Topic 4)

You have 100 computers that run Windows 10. The computers are in a workgroup. The computers have a low-bandwidth metered Internet connection.

You need to reduce the amount of Internet bandwidth consumed to download updates. What should you configure?

- A. BranchCache in hosted mode
- B. BranchCache in distributed cache mode
- C. Delivery Optimization
- D. Background intelligent Transfer Service (BITS)

**Answer:** C

#### Explanation:

References:

<https://support.microsoft.com/en-us/help/4468254/windows-update-delivery-optimization-faq>

### NEW QUESTION 136

- (Exam Topic 4)

Note: This question is part of a series of questions that present the same scenario. Each question in the series contains a unique solution that might meet the stated goals. Some question sets might have more than one correct solution, while others might not have a correct solution.

After you answer a question in this section, you will NOT be able to return to it. As a result, these questions will not appear in the review screen.

You manage devices that run Windows 10.

Ten sales users will travel to a location that has limited bandwidth that is expensive. The sales users will be at the location for three weeks.

You need to prevent all Windows updates from downloading for the duration of the trip. The solution must not prevent access to email and the Internet.

Solution: From Accounts in the Settings app, you turn off Sync settings. Does this meet the goal?

- A. Yes
- B. No

**Answer:** B

### NEW QUESTION 137

- (Exam Topic 4)

You have a workgroup computer named Computer1 that runs Windows 10 and has the users shown in the following table.

Name	Member of
User1	Users
User2	Users, Administrators

Computer1 contains an image file named C:\Folder\Image.jpg.

Computer1 has the Local Computer\Administrators Policy shown in the following table.

Setting	State
Remove Recycle Bin icon from desktop	Not configured
Desktop Wallpaper	Disabled

Computer1 has the Local Computer\Non-Administrators Policy shown in the following table.

Setting	State	Path
Remove Recycle Bin icon from desktop	Enabled	<i>Not applicable</i>
Desktop Wallpaper	Enabled	C:\Folder\Image.jpg

Computer1 has the local computer policy shown in the following table.

Setting	State
Remove Recycle Bin icon from desktop	Disabled
Desktop Wallpaper	Not configured

For each of the following statements, select Yes if the statement is true. Otherwise, select No.

NOTE: Each correct selection is worth one point.

Statements	Yes	No
User1 can change the desktop wallpaper.	<input type="radio"/>	<input type="radio"/>
User2 has the Recycle Bin on the desktop.	<input type="radio"/>	<input type="radio"/>
User1 has the Recycle Bin on the desktop.	<input type="radio"/>	<input type="radio"/>

- A. Mastered  
B. Not Mastered

**Answer:** A

**Explanation:**

Graphical user interface, text Description automatically generated

**NEW QUESTION 142**

- (Exam Topic 4)

A user purchases a new computer that has Windows 10 Home preinstalled. The computer has a biometric fingerprint reader.

You need to ensure that the user can use the fingerprint reader to sign in to the computer by using an Azure Active Directory (Azure AD) account.

What should you do first?

- A. Register the computer to Azure AD.  
B. Install the latest feature updates on the computer.  
C. Upgrade the computer to Windows 10 Enterprise.  
D. Upgrade the computer to Windows 10 Pro.

**Answer:** D

**NEW QUESTION 144**

- (Exam Topic 4)

Your network an Active Directory domain named adatum.com. The domain contains 50 computers that runs Windows 8.1. The computer has locally installed desktop application that are compatible with Windows 10.

You need to upgrade the computers to windows 10, The solution must preserver the locally installed desktop applications.

Solution: You use Windows Autopilot and create a deployment profile. You generalize each computer, and the you restart the computers.

Does this meet the goal?

- A. Yes  
B. No

**Answer:** B

**NEW QUESTION 147**

- (Exam Topic 4)

Your company uses Microsoft Deployment Toolkit (MDT) to deploy Windows 10 to new computers. The company purchases 1,000 new computers.

You need to ensure that the Hyper-V feature is enabled on the computers during the deployment. What are two possible ways to achieve the goal? Each correct answer presents part of the solution. NOTE: Each correct selection is worth one point.

- A. Add a task sequence step that adds a provisioning package.  
B. In a Group Policy object (GPO), from Computer Configuration, configure Application Control Policies.  
C. Add a custom command to the Unattend.xml file.  
D. Add a configuration setting to Windows Deployment Services (WDS).  
E. Add a task sequence step that runs dism.exe.

**Answer:** AE

**Explanation:**

References:

Provisioning package works with Windows Configuration Designer to provision win10 features and runtime settings. WCD (provisioning Package) is GUI based while DISM is command line based and dose same function. Unattend.xml / answer files are used with installation media. It contains settings, definitions and values to use during Windows Setup. In an answer file, you specify various setup options. These options include how to partition disks, where to find the Windows image that will be installed, and which product key to apply.

<https://docs.microsoft.com/en-us/windows/deployment/deploy-windows-mdt/create-a-windows-10-reference-im>

**NEW QUESTION 148**

- (Exam Topic 4)

You have a computer that runs Windows 10. You use the computer to test new Windows features. You need to configure the computer to receive preview builds of Windows 10 as soon as possible. What should you configure from Update & Security in the Settings app?

- A. Windows Insider Program



- B. Windows Update
- C. Delivery Optimization
- D. For developer

**Answer:** A

**Explanation:**

Reference:

<https://insider.windows.com/en-us/getting-started/>

**NEW QUESTION 149**

- (Exam Topic 4)

Note: This question is part of a series of questions that present the same scenario. Each question in the series contains a unique solution that might meet the stated goals. Some question sets might have more than one correct solution, while others might not have a correct solution.

After you answer a question in this section, you will NOT be able to return to it. As a result, these questions will not appear in the review screen.

You have a computer that runs Windows 10. The computer contains a folder named D:\Scripts. D:\Scripts contains several PowerShell scripts.

You need to ensure that you can run the PowerShell scripts without specifying the full path to the scripts. The solution must persist between PowerShell sessions.

Solution: From PowerShell, you run `$env:Path += ";d:\scripts"`. Does this meet the goal?

- A. Yes
- B. No

**Answer:** A

**Explanation:**

References:

[https://docs.microsoft.com/en-us/powershell/module/microsoft.powershell.core/about/about\\_environment\\_varia](https://docs.microsoft.com/en-us/powershell/module/microsoft.powershell.core/about/about_environment_varia)

**NEW QUESTION 154**

- (Exam Topic 4)

You have a computer named Computer1 that runs Windows 10. You are troubleshooting connectivity issues on Computer1.

You need to view the remote addresses to which Computer1 has active TCP connections. Which tool should you use?

- A. Performance Monitor
- B. Task Manager
- C. Resource Monitor
- D. Windows Defender Firewall with Advanced Security

**Answer:** C

**NEW QUESTION 157**

- (Exam Topic 4)

Your company deploys Windows 10 Enterprise to all computers. All the computers are joined to Microsoft Azure Active Directory (Azure AD).

The company purchases a new computer for a new user and creates an Azure AD account for the user. The user signs in to the computer by using the Azure AD account. The user discovers the activation error

shown in the following exhibit.

# Activation

## Windows

Edition	Windows 10 Pro
Activation	Windows is not activated
Product ID	XXXXXX-XXXXXX-XXXXXX-XXXXXX
Product Key	XXXXXX-XXXXXX-XXXXXX-XXXXXX-XXXXXX

Windows can't activate at this time. Try activating again later. If that doesn't work, contact your system administrator. Error code: 0x800705B4

If you're having problems with activation, select Troubleshoot to try to fix the problem.



## Activate Windows now

Running a non-genuine copy of Windows can put you at greater risk from viruses and other security threats.

Go to the Store to buy genuine Windows or enter a product key.



You need to activate Windows 10 Enterprise on the computer. What should you do?

- A. In Azure A
- B. assign a Windows 10 Enterprise license to the user.
- C. At the command prompt, run slmgr /lrc.
- D. Reinstall Windows as Windows 10 Enterprise.
- E. At the command prompt, run slmgr /ato.

**Answer:** A

### Explanation:

Reference:  
<https://docs.microsoft.com/en-us/windows/deployment/windows-10-subscription-activation>

## NEW QUESTION 162

- (Exam Topic 4)

Your network an Active Directory domain named adatum.com. The domain contains 50 computers that runs Windows 8.1. The computer has locally installed desktop application that are compatible with Windows 10.

You need to upgrade the computers to windows 10, The solution must preserver the locally installed desktop applications.

Solution: You use Microsoft Deployment Toolkit (MDT) and create a task sequence. One each compute, you run the task sequence.

Does the meet the goal?

- A. Yes
- B. No

**Answer:** B

## NEW QUESTION 164

- (Exam Topic 3)

Which users can create a new group on Computer3?

- A. User31 only
- B. User1 and User32 only
- C. Admin1 and User31 only
- D. Admin1, User31, and User32 only

**Answer:** A

### Explanation:

Reference:  
[https://ss64.com/nt/syntax-security\\_groups.html](https://ss64.com/nt/syntax-security_groups.html)

#### NEW QUESTION 168

- (Exam Topic 4)

Your network contains an Active Directory domain. The domain contains a computer named Computer1 that runs Windows 10. The domain contains the users shown in the following table.

Name	Member of
User1	Domain Users
User2	Domain Users, Guests
User3	Domain Users, Administrators

Computer1 has the local users shown in the following table.

Name	Member of
User4	Users
User5	Administrators

All users have Microsoft accounts.

Which two users can be configured to sign in by using their Microsoft account? Each correct answer presents part of the solution.

NOTE: Each correct selection is worth one point.

- A. User1
- B. User2
- C. User3
- D. User4
- E. User5

**Answer:** DE

#### NEW QUESTION 173

- (Exam Topic 3)

Which users can sign in to Computer3 when the computer starts in Safe Mode?

- A. User31 only
- B. User31 and User32 only
- C. User31 and Admin1 only
- D. User31, User 32, User33, and Admin1
- E. User31, User32, and User33 only

**Answer:** A

#### Explanation:

Only users with membership of the local Administrators group can log on to a computer in safe mode. Admin1 cannot log in because Computer3 is not joined to the domain.

References:

<https://support.microsoft.com/en-us/windows/advanced-startup-options-including-safe-mode-b90e7808-80b5-a2>

#### NEW QUESTION 176

- (Exam Topic 3)

You need to ensure that you can manage Computer2 by using Windows Admin Center on Server1. What should you do on Computer2?

- A. Allow the Windows Remote Management (WinRM) feature through Windows Defender Firewall.
- B. Run the set - Location cmdlet
- C. Allow the Windows Device Management feature through Windows Defender Firewall.
- D. Run the winrm quickconfig command.

**Answer:** D

#### NEW QUESTION 177

- (Exam Topic 3)

You need to configure Delivery Optimization to meet the technical requirements. Which download mode should you use?

- A. Simple (99)
- B. Group (2)
- C. Internet (3)
- D. HTTP Only (0)
- E. Bypass (100)

**Answer:** D

#### Explanation:

Reference:

<https://docs.microsoft.com/en-us/windows/deployment/update/waas-delivery-optimization-reference#download>

#### NEW QUESTION 182

- (Exam Topic 2)

You need to meet the technical requirement for User6. What should you do?

- A. Add User6 to the Remote Desktop Users group in the domain.
- B. Remove User6 from Group2 in the domain.
- C. Add User6 to the Remote Desktop Users group on Computer2.
- D. And User6 to the Administrators group on Computer2.

Answer: B

NEW QUESTION 183

- (Exam Topic 2)

You need to meet the technical requirements for the helpdesk users.

What should you do? To answer, select the appropriate options in the answer area. NOTE: Each correct selection is worth one point.

Answer Area

Add the help desk users to:

The local Administrators group on the Windows 10 computers
The Domain Computrers group in the domain group
The Event Log Readers group in the domain group
The local Event Log Readers group on the Windows 10 computers
The Group Policy Creators Owners group in the domain group
The local Power Users group on the Windows 10 computers

Troubleshooting tool that the helpdesk users should use:

Get-GPOReport
GPRresult
GPOupdate
Group Policy Object Editor

- A. Mastered
- B. Not Mastered

Answer: A

Explanation:

References:

<https://www.itprotoday.com/compute-engines/what-group-policy-creator-owners-group>

NEW QUESTION 188

- (Exam Topic 2)

You need to meet the technical requirement for the IT department users. What should you do first?

- A. Issue computer certificates
- B. Distribute USB keys to the IT department users.
- C. Enable screen saver and configure a timeout.
- D. Turn on Bluetooth.

Answer: D

Explanation:

References:

<https://support.microsoft.com/en-za/help/4028111/windows-lock-your-windows-10-pc-automatically-when-you>

NEW QUESTION 192

- (Exam Topic 2)

You need to meet the technical requirements for the San Diego office computers. Which Windows 10 deployment method should you use?

- A. wipe and load refresh
- B. Windows Autopilot
- C. provisioning Packages
- D. in-place upgrade

Answer: B

Explanation:

References:

<https://docs.microsoft.com/en-us/windows/deployment/windows-autopilot/windows-autopilot>

NEW QUESTION 197

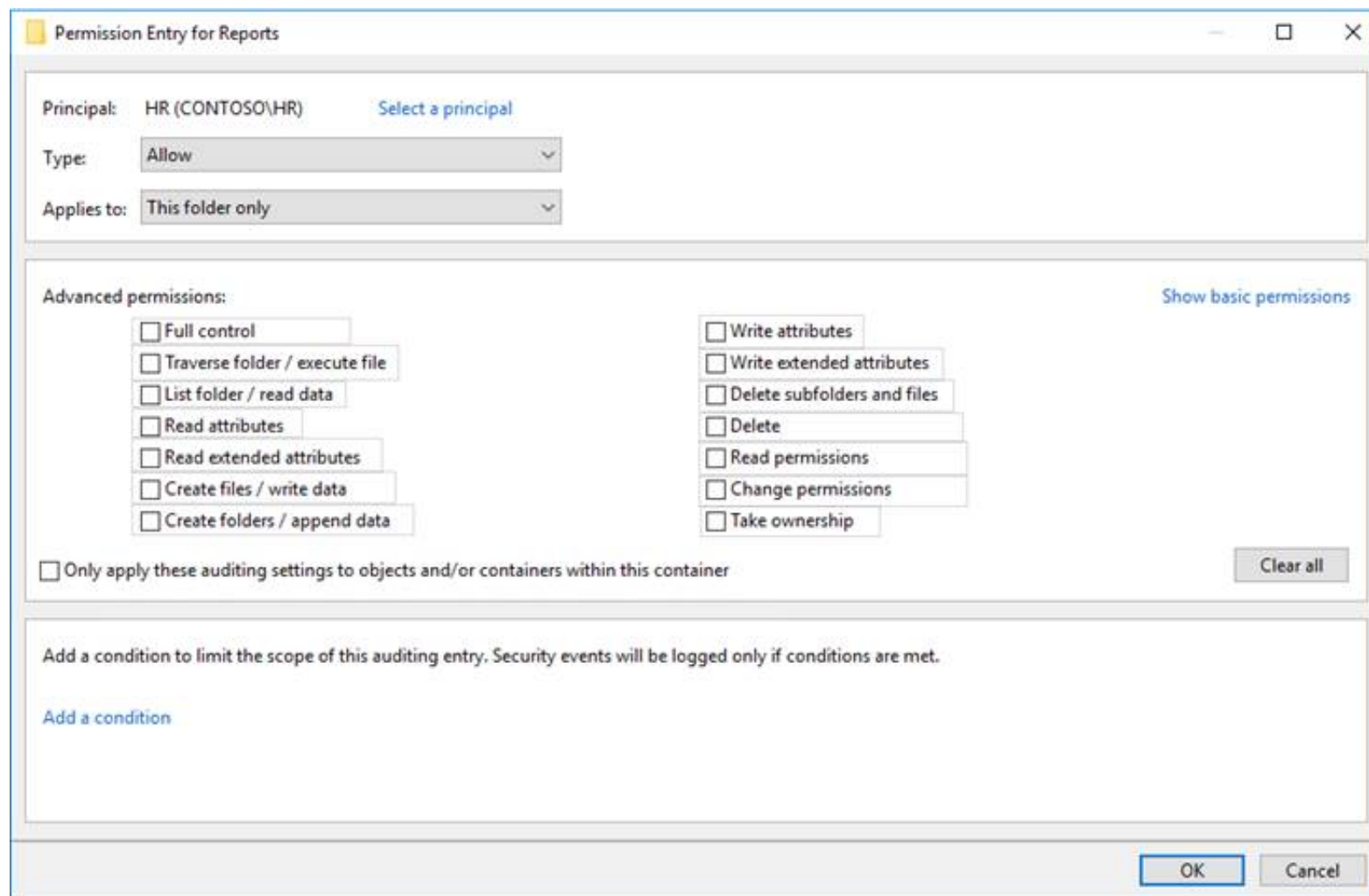
- (Exam Topic 2)

You need to meet the technical requirements for the HR department users.

Which permissions should you assign to the HR department users for the D:\Reports folder? To answer, select the appropriate permissions in the answer area.

NOTE: Each correct selection is worth one point.





- A. Mastered
- B. Not Mastered

**Answer:** A

**Explanation:**

References:

<https://www.online-tech-tips.com/computer-tips/set-file-folder-permissions-windows/>

**NEW QUESTION 198**

- (Exam Topic 1)

You need to sign in as LocalAdmin on Computer11. What should you do first?

- A. From the LAPS UI tool, view the administrator account password for the computer object of Computer11.
- B. From Local Security Policy, edit the policy password settings on Computer11.
- C. From the LAPS UI tool, reset the administrator account password for the computer object of Computer11.
- D. From Microsoft Intune, edit the policy password settings on Computer11.

**Answer:** A

**Explanation:**

References:

<https://technet.microsoft.com/en-us/mt227395.aspx>

**NEW QUESTION 201**

- (Exam Topic 1)

You need to ensure that User10 can activate Computer10. What should you do?

- A. Request that a Windows 10 Enterprise license be assigned to User10, and then activate Computer10.
- B. From the Microsoft Deployment Toolkit (MDT), add a Volume License Key to a task sequence, and then redeploy Computer10.
- C. From System Properties on Computer10, enter a Volume License Key, and then activate Computer10.
- D. Request that User10 perform a local AutoPilot Reset on Computer10, and then activate Computer10.

**Answer:** D

**Explanation:**

References:

<https://docs.microsoft.com/en-us/windows/deployment/windows-autopilot/windows-autopilot-requirements-lice>

**NEW QUESTION 202**

- (Exam Topic 1)

You need to take remote control of an employee's computer to troubleshoot an issue. What should you send to the employee to initiate a remote session?

- A. a numeric security code
- B. a connection file
- C. an Easy Connect request
- D. a password

**Answer:** A

**Explanation:**

References:

<https://support.microsoft.com/en-us/help/4027243/windows-10-solve-pc-problems-with-quick-assist>

**NEW QUESTION 206**

- (Exam Topic 1)

You need to recommend a solution to monitor update deployments. What should you include in the recommendation?

- A. Windows Server Update (WSUS)
- B. the Update Management solution in Azure Automation
- C. the Update Compliance solution in Azure Log Analytics
- D. the Azure Security Center

**Answer:** C

**Explanation:**

References:

<https://docs.microsoft.com/en-us/windows/deployment/update/update-compliance-monitor>

**NEW QUESTION 208**

- (Exam Topic 4)

Please wait while the virtual machine loads. Once loaded, you may proceed to the lab section. This may take a few minutes, and the wait time will not be deducted from your overall test time.

When the Next button is available, click it to access the lab section. In this section, you will perform a set of tasks in a live environment. While most functionality will be available to you as it would be in a live environment, some functionality (e.g., copy and paste, ability to navigate to external websites) will not be possible by design.

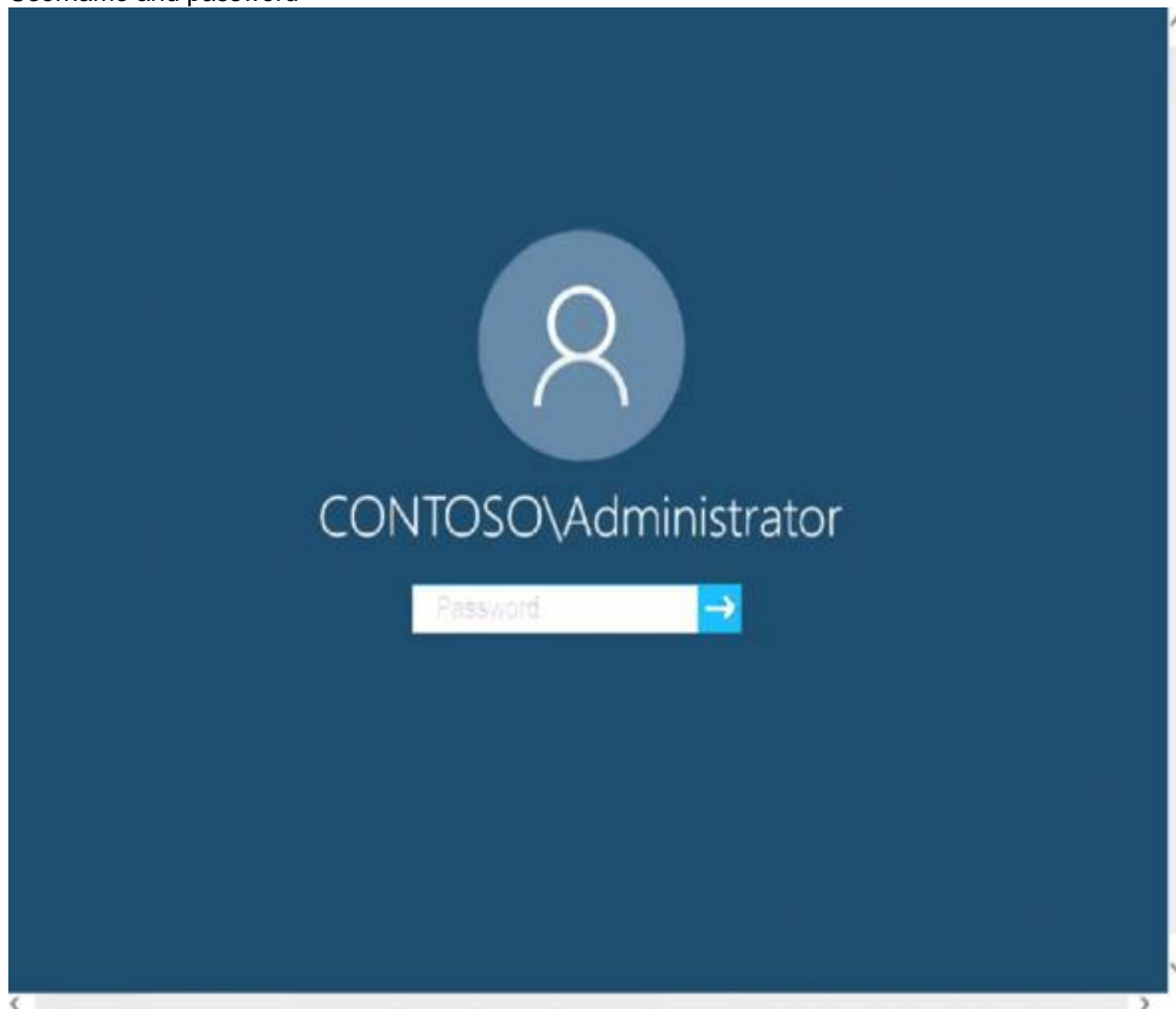
Scoring is based on the outcome of performing the tasks stated in the lab. In other words, it doesn't matter how you accomplish the task, if you successfully perform it, you will earn credit for that task.

Labs are not timed separately, and this exam may more than one lab that you must complete. You can use as much time as you would like to complete each lab.

But, you should manage your time appropriately to ensure that you are able to complete the lab(s) and all other sections of the exam in the time provided.

Please note that once you submit your work by clicking the Next button within a lab, you will NOT be able to return to the lab.

Username and password



Use the following login credentials as needed:

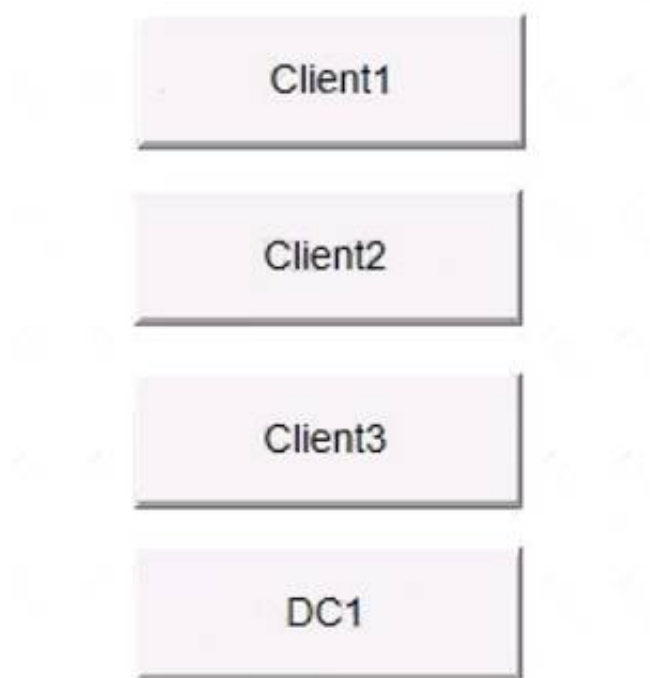
To enter your password, place your cursor in the Enter password box and click on the password below.

Username: Contoso/Administrator

Password: Passw0rd!

The following information is for technical support purposes only:

Lab Instance: 10921597



You need to identify the total number of events that have Event ID 63 in the Application event log. You must type the number of identified events into C:\Folder1\FileA.txt.

To complete this task, sign in to the required computer or computers and perform the required action.

- A. Mastered
- B. Not Mastered

**Answer:** A

**Explanation:**

- Open Event Viewer.
- Click the log that you want to filter, then click Filter Current Log from the Action pane or right-click menu. This will open the Filter Current Log dialog box.
- You can specify a time period if you know approximately when the relevant events occurred. You can specify the event level, choosing between Critical, Warning, Verbose, Error and Information. If you select none of these, all event levels will be returned. You can't modify which event log is being checked as filters apply only to a single log.
- You can choose the event sources which have generated the log entries, and search for key words, users, or computers. You can also search using specific event IDs.

Reference:

<https://www.manageengine.com/products/active-directory-audit/kb/how-to/how-to-search-the-event-viewer.htm>

**NEW QUESTION 209**

- (Exam Topic 4)

You have a computer named Computer1. Computer1 runs Windows 10 Pro. Computer1 is experiencing connectivity issues.

You need to view the IP addresses of any remote computer that Computer1 has an active TCP connection to. Should you do?

- A. In Windows Administrative Tools, open Performance Monitor
- B. In the Control Panel, open Network and Internet Then select Network and Sharing Center
- C. In Windows Administrative Tools, open Resource Monitor
- D. In the Setting ap
- E. open Update and Security Then open Windows Security and select Firewall and Network protection

**Answer:** C

**NEW QUESTION 212**

- (Exam Topic 4)

Your network an Active Directory domain named adatum.com. The domain contains 50 computers that runs Windows 8.1. The computer has locally installed desktop application that are compatible with Windows 10.

You need to upgrade the computers to windows 10, The solution must preserver the locally installed desktop applications.

Solution. You use System image manager (Windows SIM) to create an answer file. You use Windows Deployment Service (WDS) to add an install image. You start each computer by using PXE, and then install the image.

Does this meet the goal?

- A. Yes
- B. No

**Answer:** A

**NEW QUESTION 213**

- (Exam Topic 4)

You have a computer named Computer1 that runs Windows 10.

On Computer1, you create the local users shown in the following table.

Name	Member of
User1	Users
User2	Users, Guests
User3	Power Users, Guest
User4	Guests, Users, Administrators
User5	Users, Distributed COM Users

Which three user profiles will persist after each user signs out? Each correct answer presents part of the solution.  
NOTE: Each correct selection is worth one point.

- A. User1
- B. User2
- C. User3
- D. User4
- E. User5

**Answer:** ADE

#### NEW QUESTION 215

- (Exam Topic 4)

You have a computer named Computer1 that runs Windows 10 and has an application named App1. You need to use Performance Monitor to collect data about the processor utilization of App1. Which performance object should you monitor?

- A. Process
- B. Processor Performance
- C. Processor Information
- D. Processor

**Answer:** A

#### Explanation:

References:

[https://www.cse.wustl.edu/~jain/cse567-06/ftp/os\\_monitors/index.html](https://www.cse.wustl.edu/~jain/cse567-06/ftp/os_monitors/index.html)

#### NEW QUESTION 216

- (Exam Topic 4)

Your network contains an Active Directory domain. The domain contains 1,000 computers that run Windows 10.

You configure Microsoft Edge settings by using domain and local Group Policy Objects (GPOs).

You need to generate a report that contains all the Microsoft Edge policy settings applied to a computer. What should you do?

- A. From PowerShell
- B. run the Gec-GPO cmdlet.
- C. From PowerShell
- D. run the Gec-GPOReport cmdlet.
- E. From Microsoft Edge, open edge://policy.
- F. From Microsoft Edge, open edge://settings.

**Answer:** C

#### Explanation:

The Get-GPOReport cmdlet would generate a report for all domain group policy objects. However, this would not display the settings that are applied by local group policy objects.

To display the settings applied by both domain and local GPOs, you would have to open Microsoft Edge and enter edge://policy in the address bar.

#### NEW QUESTION 220

- (Exam Topic 4)

A user named User1 has a computer named Computer1 that runs Windows 10.

User1 connects to a Microsoft Azure virtual machine named VM1 by using Remote Desktop. User1 creates a VPN connection to a partner organization.

When the VPN connection is established, User1 cannot connect to VM1. When User1 disconnects from the VPN, the user can connect to VM1.

You need to ensure that User1 can connect to VM1 while connected to the VPN. What should you do?

- A. From the proxy settings, add the IP address of VM1 to the bypass list to bypass the proxy.
- B. From the properties of VPN1, clear the Use default gateway on remote network check box.
- C. From the properties of the Remote Desktop connection to VM1, specify a Remote Desktop Gateway (RDGateway).
- D. From the properties of VPN1, configure a static default gateway address.

**Answer:** B

#### Explanation:

References:

<https://www.stevejenkins.com/blog/2010/01/using-the-local-default-gateway-with-a-windows-vpn-connection/>



### NEW QUESTION 221

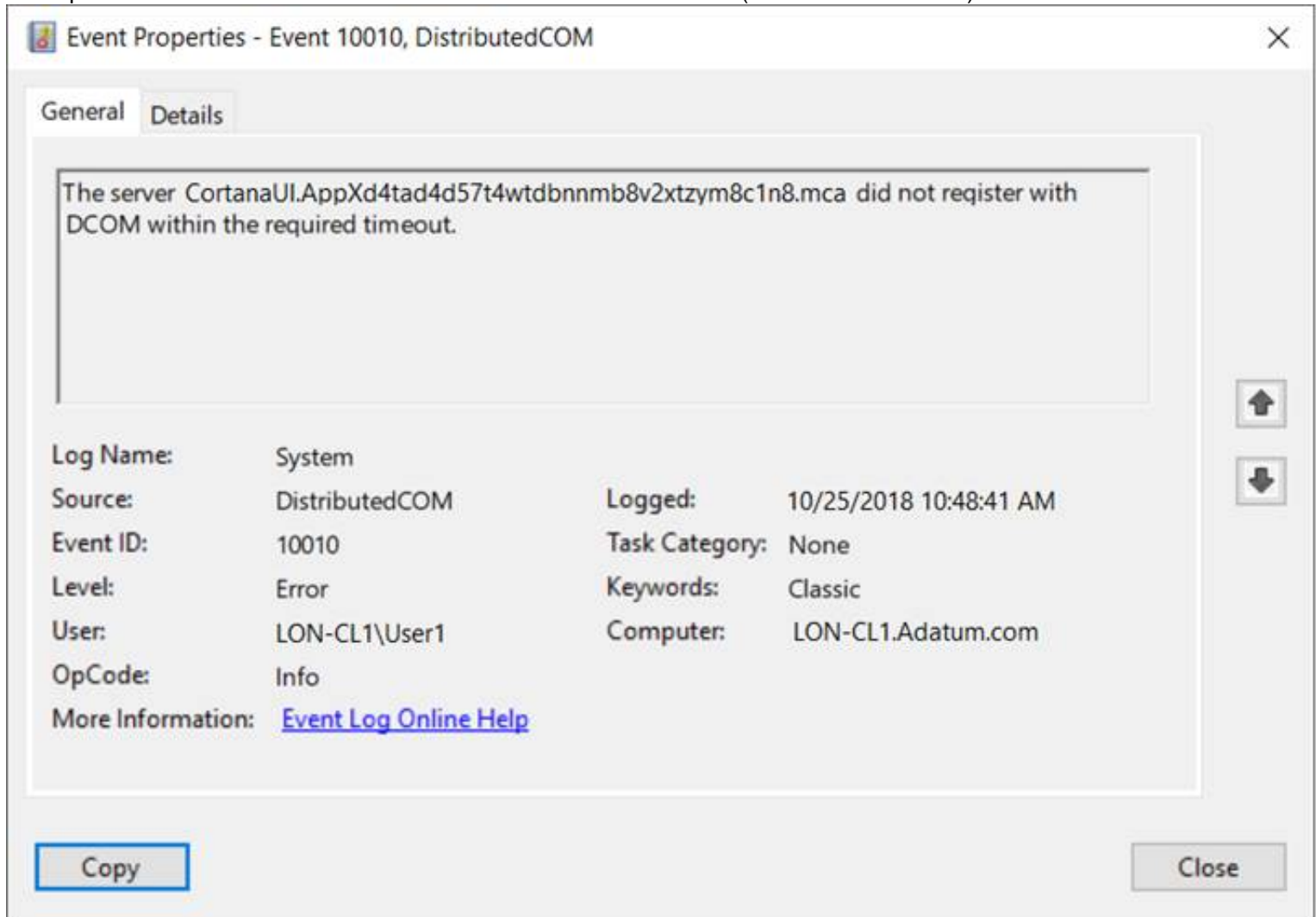
- (Exam Topic 4)

You have a computer named LON-CL1.Adatum.com that runs Windows 10.

From Event Viewer, you create a custom view named View1 that has the following filter:

- > User: User1
- > Logged: Any time
- > Event logs: System
- > Computer: LON-CL1
- > Event IDs: 10000 – 11000
- > Event level: Error, Verbose

You open Event Viewer and discover the event shown in the exhibit. (Click the Exhibit tab.)



The event does not appear in View1.

You need to ensure that the event appears in View1. What should you do?

- A. Add a Task Category setting to the filter.
- B. Add the computer account to the Event Log Readers group.
- C. Create an event subscription.
- D. Modify the Computer setting in the filter.

**Answer:** A

#### Explanation:

References:

<https://www.techrepublic.com/article/how-to-use-custom-views-in-windows-10s-event-viewer/>

### NEW QUESTION 225

- (Exam Topic 4)

You have a computer that runs Windows 11 and hosts a Hyper-V virtual machine named VMI. You create the disks shown in the following table.

Name	Format	Type	Parent
Base1	VHD	Fixed size	<i>Not applicable</i>
Base2	VHDX	Fixed size	<i>Not applicable</i>
Disk1	VHD	Dynamically expanding	<i>Not applicable</i>
Disk2	VHD	Differencing	Base1.vhd
Disk3	VHDX	Dynamically expanding	<i>Not applicable</i>
Disk4	VHDX	Differencing	Base2.vhdx

You add Disk1, Disk2, Disk3, and Disk4 to a SCSI controller attached to VMI. You need to identify the following:

Which disks will increase in size automatically when files are copied to the disks. Which disks can be manually increased in size while VMI is running.

What should you identify? To answer, select the appropriate options in the answer area.

Disks that will increase in size automatically:

Base1 and Disk2 only  
 Base2 and Disk4 only  
**Disk1 and Disk3 only**  
 Disk3 and Disk4 only  
 Base2, Disk3, and Disk4 only  
 Disk1, Disk2, Disk3, and Disk4

Disks that can be manually increased in size while VM1 is running:

Base1 and Disk2 only  
 Base2 and Disk4 only  
 Disk1 and Disk3 only  
 Disk3 and Disk4 only  
 Base2, Disk3, and Disk4 only  
**Disk1, Disk2, Disk3, and Disk4**

- A. Mastered  
 B. Not Mastered

**Answer:** A

**Explanation:**

Graphical user interface, text, application, Word, website Description automatically generated

**NEW QUESTION 226**

- (Exam Topic 4)

Your network contains an Active Directory domain that contains the objects shown in the following table.

Name	Type	Member of
User1	User	Group1
User2	User	Group2
Group1	Global group	None
Group2	Domain local group	None
Computer1	Computer	Group1
Computer2	Computer	Group1

Computer1 contains the shared folders shown in the following table.

Name	NTFS permission	Share permission	Folder enumeration mode
Share1	Group1: Write	Group1: Full control	Access-based
Share2\$	Group2: Full control	Group2: Read	Unrestricted

The computers have the network configurations shown in the following table.

Name	Network Discovery	Windows Defender Firewall
Computer1	On	Incoming connections: Block all connections to apps that are not on the list of allowed apps
Computer2	Off	Incoming connections: Block all connections to apps that are not on the list of allowed apps

For each of the following statements, select Yes if the statement is true. Otherwise, select No.

NOTE: Each correct selection is worth one point.

Statements	Yes	No
Share1 is listed if User1 connects to \\Computer1 from Computer2.	<input type="radio"/>	<input type="radio"/>
Share1 is listed if User2 connects to \\Computer1 from Computer2.	<input type="radio"/>	<input type="radio"/>
Share2\$ is listed if User2 connects to \\Computer1 from Computer2.	<input type="radio"/>	<input type="radio"/>

- A. Mastered  
 B. Not Mastered

**Answer:** A

**Explanation:**

Box 1: Yes

User1 is in Group1 which has permission to access the share so the share will be visible. Box 2: No

User2 is in Group2 which does not have permission to access Share1. Access-based enumeration is enabled so Share1 will not be listed as User2 does not have permission to access it.

Box 3: No  
Share2\$ is a hidden share (dollar sign appended) so the share will never be listed.

**NEW QUESTION 230**

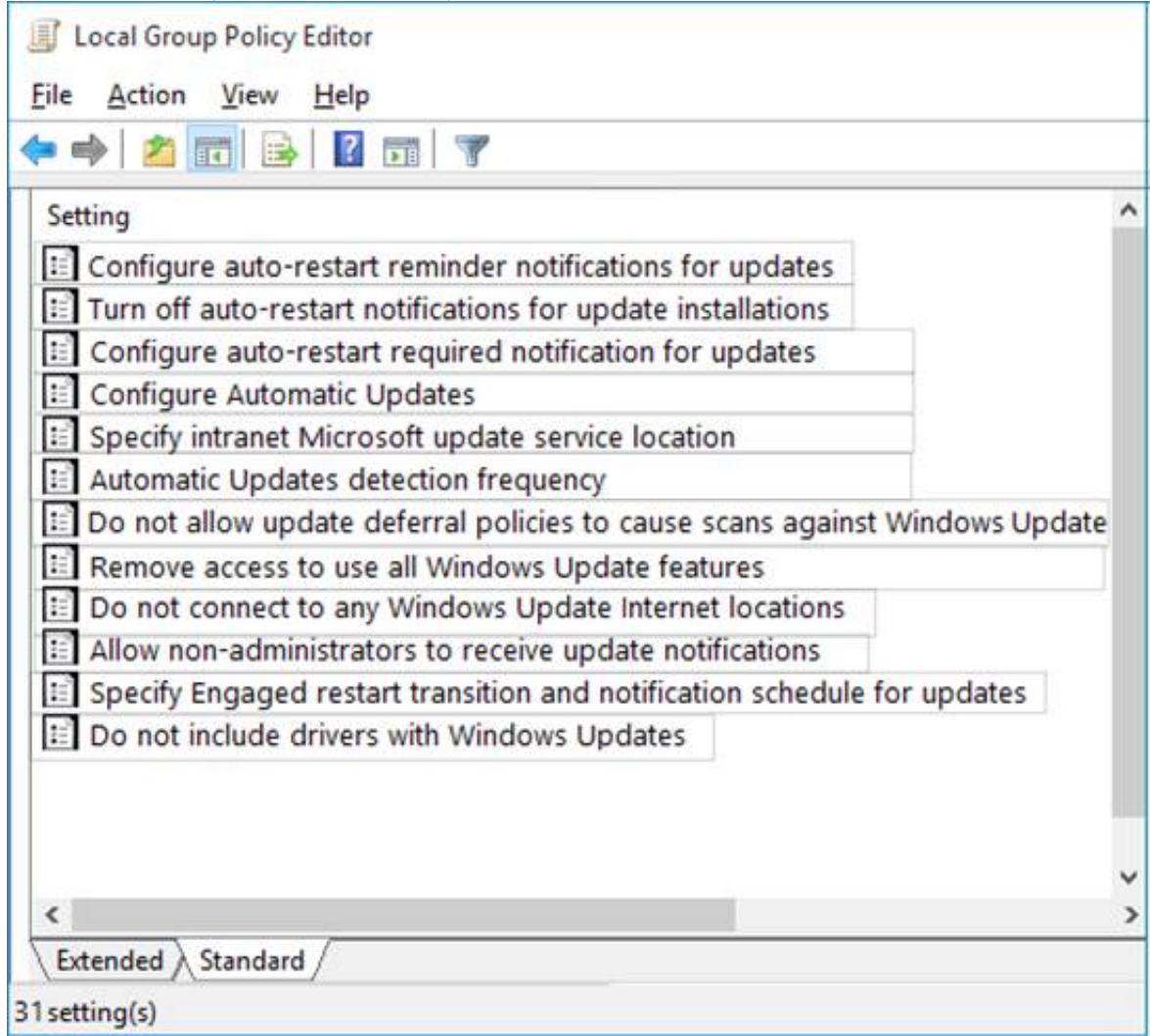
- (Exam Topic 4)

You have 10 computers that run Windows 10.

You have a Windows Server Update Services (WSUS) server.

You need to configure the computers to install updates from WSUS.

Which two settings should you configure? To answer, select the appropriate options in the answer area. NOTE: Each correct selection is worth one point.



- A. Mastered
- B. Not Mastered

**Answer:** A

**Explanation:**

References:

<https://docs.microsoft.com/en-us/windows/deployment/update/waas-manage-updates-wsus#configure-automatic>

**NEW QUESTION 232**

- (Exam Topic 4)

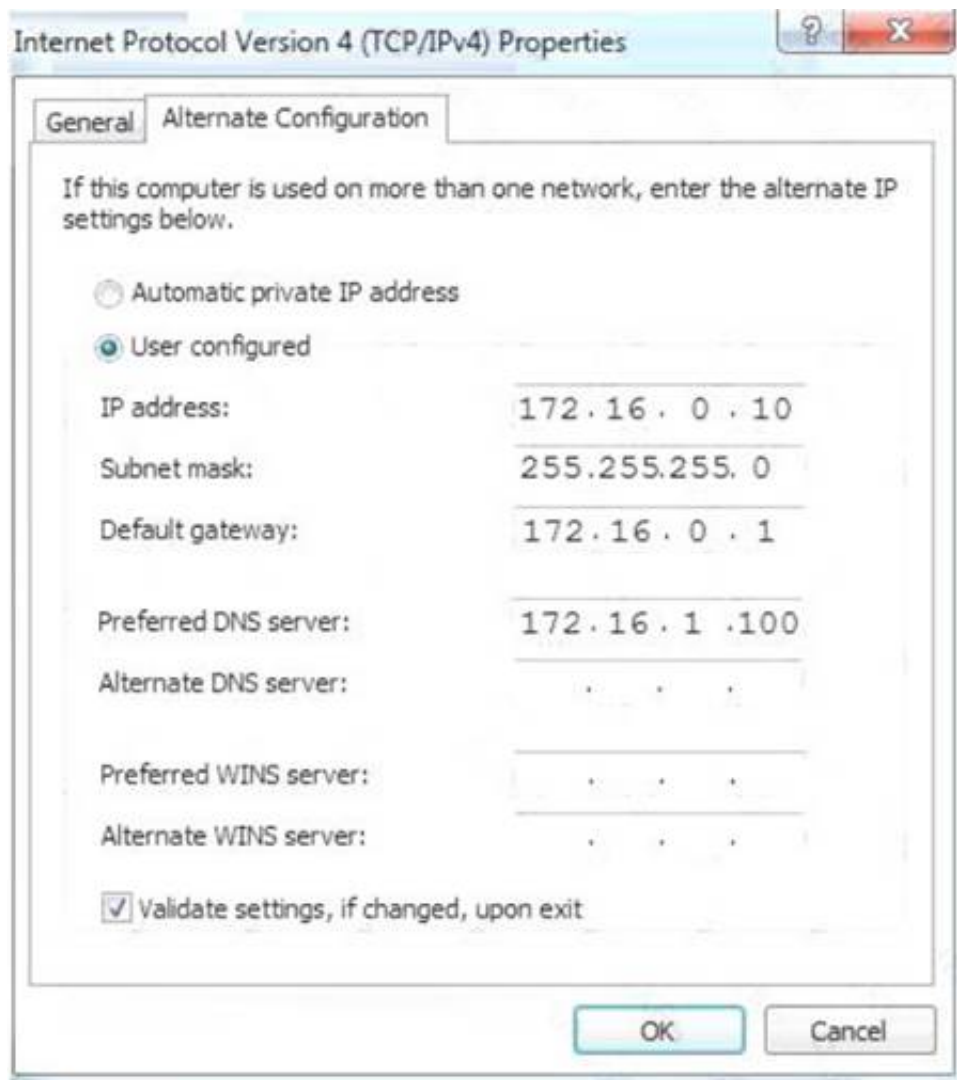
Your network contains the segments shown in the following table.

Name	IP address space	Covered by DHCP	Next available IP address
Segment1	172.16.0.0/24	Yes	172.16.0.58
Segment2	192.168.1.0/24	No	Not applicable

You have a computer that runs Windows 10.

The network interface of the computer is configured as shown in the exhibit. (Click the Exhibit tab.)





You need to identify which IP address the computer will have on the network when the computer connects to the segments. Which IP address should you identify for each segment? To answer, select the appropriate options in the answer area.  
NOTE: Each correct selection is worth one point.

Segment1: 

▼

172.16.0.10

172.16.0.58

An address that starts with 169.254

Segment2: 

▼

172.16.0.10

172.16.0.58

An address that starts with 169.254

An address that starts with 192.168.1

- A. Mastered
- B. Not Mastered

Answer: A

Explanation:

Segment1: 

▼

172.16.0.10

172.16.0.58

An address that starts with 169.254

Segment2: 

▼

172.16.0.10

172.16.0.58

An address that starts with 169.254

An address that starts with 192.168.1



You have 50 Windows 8.1 devices.  
You plan to migrate the devices to Windows 10.  
You need to install the following tools on a local computer

- Deployment Image Servicing and Management (DISM)
- Windows System Image Manager (Windows SIM)
- OEM Activation 3.0 (OA 3.0)
- Scan State
- Load State

Which two features in the Windows Assessment and Deployment Kit should you select? To answer, select the nodes in the answer area. NOTE: Each correct selection is worth one point.

## Select the features you want to install

Click a feature name for more information.

☐ Application Compatibility Tools

☐ Deployment Tools

☐ Windows Preinstallation Environment (Windows PE)

☐ Imaging And Configuration Designer (ICD)

☐ Configuration Designer

☒ User State Migration Tool (USMT)

☐ Volume Activation Management Tool (VAMT)

☐ Windows Performance Toolkit

☐ Windows Assessment Toolkit

☐ Microsoft User Experience Virtualization (UE-V) Template

☐ Media eXperience Analyzer

### User State Migration Tool (USMT)

Size: 582.1 MB

Tools to migrate user data from a previous installation of Windows to a new installation.

Includes:

- ScanState tool
- LoadState tool
- USMTUtils tool

- A. Mastered  
B. Not Mastered

Answer: A

Explanation:

## Select the features you want to install

Click a feature name for more information.

☐ Application Compatibility Tools

☐ Deployment Tools

☐ Windows Preinstallation Environment (Windows PE)

☐ Imaging And Configuration Designer (ICD)

☐ Configuration Designer

☒ User State Migration Tool (USMT)

☐ Volume Activation Management Tool (VAMT)

☐ Windows Performance Toolkit

☐ Windows Assessment Toolkit

☐ Microsoft User Experience Virtualization (UE-V) Template

☐ Media eXperience Analyzer

### User State Migration Tool (USMT)

Size: 582.1 MB

Tools to migrate user data from a previous installation of Windows to a new installation.

Includes:

- ScanState tool
- LoadState tool
- USMTUtils tool

### NEW QUESTION 237

- (Exam Topic 4)  
You have a computer that runs Windows 10. The computer contains two local user accounts named User1 and User2. User2 is a member of the local Administrators group.  
User1 performs the actions shown in the following table.

Time	Name	Action
9:00 AM	C:\Users\User1\Documents\File1.docx	Create a file.
9:01 AM	D:\Folder1\File2.txt	Create a file.
10:10 AM	C:\Users\User1\Documents\File1.docx	Save the file.
10:14 AM	D:\Folder1\File2.txt	Save the file.
10:19 AM	D:\Folder1\File2.txt	Save the file.
10:25 AM	D:\Folder1\File2.txt	Save the file.

User2 performs the actions shown in the following table.

Time	Action
9:49 AM	Sign in.
9:50 AM	Add D:\Folder1 to the Documents library.
10:00 AM	Turn on File History and configure File History to save copies of files every 20 minutes.
10:05 AM	Create a restore point.
10:06 AM	Sign out.

For each of the following statements, select Yes if the statement is true. Otherwise, select No.  
 NOTE: Each correct selection is worth one point.

Statements	Yes	No
User1 can use File History to restore File1.docx to the contents contained in the file at 10:05 AM.	<input type="radio"/>	<input type="radio"/>
User1 can use File History to restore File2.txt to the contents contained in the file at 10:15 AM.	<input type="radio"/>	<input type="radio"/>
User1 can use File History to restore File2.txt to the contents contained in the file at 10:20 AM.	<input type="radio"/>	<input type="radio"/>

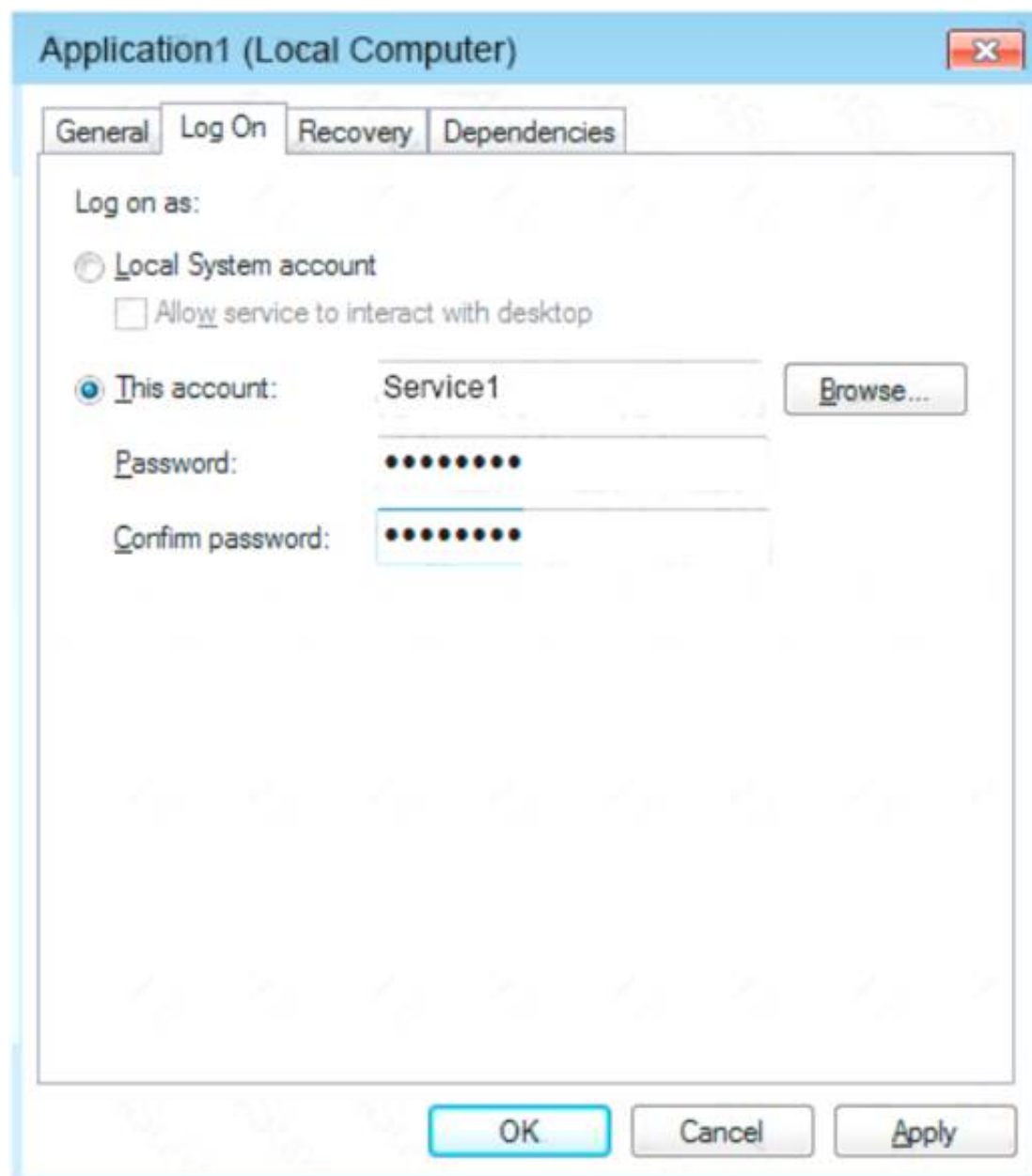
- A. Mastered
- B. Not Mastered

Answer: A

Explanation:  
 Graphical user interface, text, application Description automatically generated

NEW QUESTION 242

- (Exam Topic 4)  
 Note: This question is part of a series of questions that present the same scenario. Each question in the series contains a unique solution that might meet the stated goals. Some question sets might have more than one correct solution, while others might not have a correct solution.  
 After you answer a question in this section, you will NOT be able to return to it. As a result, these questions will not appear in the review screen.  
 You have a computer named Computer1 that runs Windows10.  
 A service named Application1 is configured as shown in the exhibit.



You discover that a user used the Service1 account to sign in to Computer1 and deleted some files.

You need to ensure that the identity used by Application1 cannot be used by a user to sign in to the desktop on Computer1. The solution must use the principle of least privilege.

Solution: On Computer1, you configure Application1 to sign in as the LocalSystem account and select the Allow service to interact with desktop check box. You delete the Service1 account.

Does this meet the goal?

- A. Yes
- B. No

**Answer: B**

**Explanation:**

<https://docs.microsoft.com/en-us/windows/win32/services/localsystem-account>

**NEW QUESTION 244**

- (Exam Topic 4)

Your company has a computer named Computer1 that runs Windows 10. Computer1 is used to provide guests with access to the Internet. Computer1 is a member of a workgroup.

You want to configure Computer1 to use a user account sign in automatically when the computer is started. The user must not be prompted for a user name and password.

What should you do?

- A. Configure Group Policy preferences.
- B. Run the BCDBoot command.
- C. Edit the Registry.
- D. Run the MSConfig command.

**Answer: C**

**Explanation:**

In the registry, add a default user name and a default password in the HKEY\_LOCAL\_MACHINE\SOFTWARE\Microsoft\Windows NT\CurrentVersion\Winlogon\DefaultUserName and HKEY\_LOCAL\_MACHINE\SOFTWARE\Microsoft\Windows NT\CurrentVersion\Winlogon\DefaultPassword registry values.

Reference:

<https://support.microsoft.com/en-us/help/324737/how-to-turn-on-automatic-logon-in-windows>

**NEW QUESTION 249**

- (Exam Topic 4)

Your company has an on-premises network that contains an Active Directory domain. The domain is synced to Microsoft Azure Active Directory (Azure AD). All computers in the domain run Windows 10 Enterprise. You have a computer named Computer1 that has a folder named Folder1.

You must provide users in group named Group1 with the ability to view the list of files in Folder1. Your solution must ensure that the principle of least privilege is maintained.

What should you do?



- A. Assign the Full control permissions for the Folder1 folder to Group1.
- B. Assign the Read permissions for the Folder1 folder to Group1.
- C. Assign the List folder permissions for the Folder1 folder to Group1.
- D. Assign the Take ownership permissions for the Folder1 folder to Group1.

Answer: C

Explanation:

Reference:

<https://www.online-tech-tips.com/computer-tips/set-file-folder-permissions-windows/>

#### NEW QUESTION 252

- (Exam Topic 4)

You have an isolated network segment that contains only three computers named Computer1, Computer2, and Computer3 that run Windows 10. The network settings for each computer are shown in the following table.

Name	TCP/IPv4		TCP/IPv6
	General	Alternate configuration	
Computer1	IP assignment: Automatic (DHCP)	Automatic private IP address	Obtain an IPv6 address automatically
Computer2	IP assignment: Manual IP address: 169.254.15.10 Mask: 255.255.0.0	Not applicable	IPv6 address: 2001::15 Subnet prefix length: 64
Computer3	IP assignment: Manual IP address: 192.168.15.5 Mask: 255.255.0.0	Not applicable	IPv6 address: FE80::5 Subnet prefix length: 64

Windows Defender Firewall is configured to allow ICMP and ICMPv6 traffic.

For each of the following statements, select Yes if the statement is true. Otherwise, select No. NOTE: Each correct selection is worth one point.

#### Answer Area

Statements	Yes	No
On Computer1, the ping Computer2 command will return a successful result.	<input type="radio"/>	<input type="radio"/>
On Computer1, the ping FE80::5 command will return a successful result.	<input type="radio"/>	<input type="radio"/>
On Computer1, the ping 192.168.15.5 command will return a successful result.	<input type="radio"/>	<input type="radio"/>

- A. Mastered
- B. Not Mastered

Answer: A

Explanation:

#### Answer Area

Statements	Yes	No
On Computer1, the ping Computer2 command will return a successful result.	<input type="radio"/>	<input checked="" type="radio"/>
On Computer1, the ping FE80::5 command will return a successful result.	<input type="radio"/>	<input checked="" type="radio"/>
On Computer1, the ping 192.168.15.5 command will return a successful result.	<input type="radio"/>	<input checked="" type="radio"/>

#### NEW QUESTION 253

- (Exam Topic 4)

Your network contains an Active Directory domain named Contoso.com.

A user named User1 has a personal computer named Computer that runs Windows 10 Pro. User1 has a VPN connection to the corporate network.

You need to ensure that when User1 connection to the corporate network.

You need to ensure that when user1 connects to the VPN, network traffic uses a proxy located in the corporate network. The solution must ensure that User1 can access the internet when disconnected from the VPN.

What should you do?

A. From the Settings app, modify the properties of the VPN connection.

B. From the Setting app, modify proxy settings for the local computer.

C. From Control panel, modify the properties of the VPN connection

D. From Control Panel, modify the Windows Defender Firewall settings

**Answer:** A

#### NEW QUESTION 257

- (Exam Topic 4)

You have computers that run Windows 11 as shown in the following table.

Name	IP address	Joined to
Computer1	192.168.10.10	Active Directory
Computer2	192.168.10.15	Workgroup

You ping 192.168.10.15 from Computer1 and discover that the request timed out. You need to ensure that you can successfully ping 192.168.10.15 from Computer1. Solution: On Computer1, you turn off Windows Defender Firewall-Does this meet the goal?

A. Yes

B. No

**Answer:** B

#### NEW QUESTION 258

- (Exam Topic 4)

Your network contains an Active Directory domain. The domain contains a computer named Computer1 that runs Windows 10.

The domain contains the users shown in the following table.

Name	Member of
User1	Domain Users
User2	Domain Users, Guests
User3	Domain Users, Administrators

Computer has the local users shown in the following table.

Name	Member of
User4	Users
User5	Administrators

All users have Microsoft accounts.

Which two user can be configured to sign in by using their Microsoft account? Each correct answer presents part of the solution.

NOTE: Each correct selection is worth one point.

A. User 1

B. User 2

C. User 3

D. User 4

E. User 5

**Answer:** CE

#### NEW QUESTION 260

- (Exam Topic 4)

You deploy 100 computers that run Windows 10. Each computer has a cellular connection and a Wi-Fi connection.

You need to prevent the computers from using the cellular connection unless a user manually connects to the cellular network.

What should you do?

A. Set the Use cellular instead of Wi-Fi setting for the cellular connection to Never

B. Run the netsh wlan set hostednetwork mode=disallow command

C. Clear the Let Windows manage this connection check box for the cellular connection

D. Select the Let Windows manage this connection check box for the Wi-Fi connection

**Answer:** C

**Explanation:**

References:

<https://support.microsoft.com/en-za/help/10739/windows-10-cellular-settings>

#### NEW QUESTION 264

- (Exam Topic 4)

You have a computer that runs Windows 10 Home.  
You need to upgrade the computer to Windows 10 Enterprise as quickly as possible. The solution must retain the user settings.  
What should you do first?

- A. Run the scansace command.
- B. Perform an in-place upgrade to Windows Pro.
- C. Install the latest feature updates.
- D. Run the sysprep command.

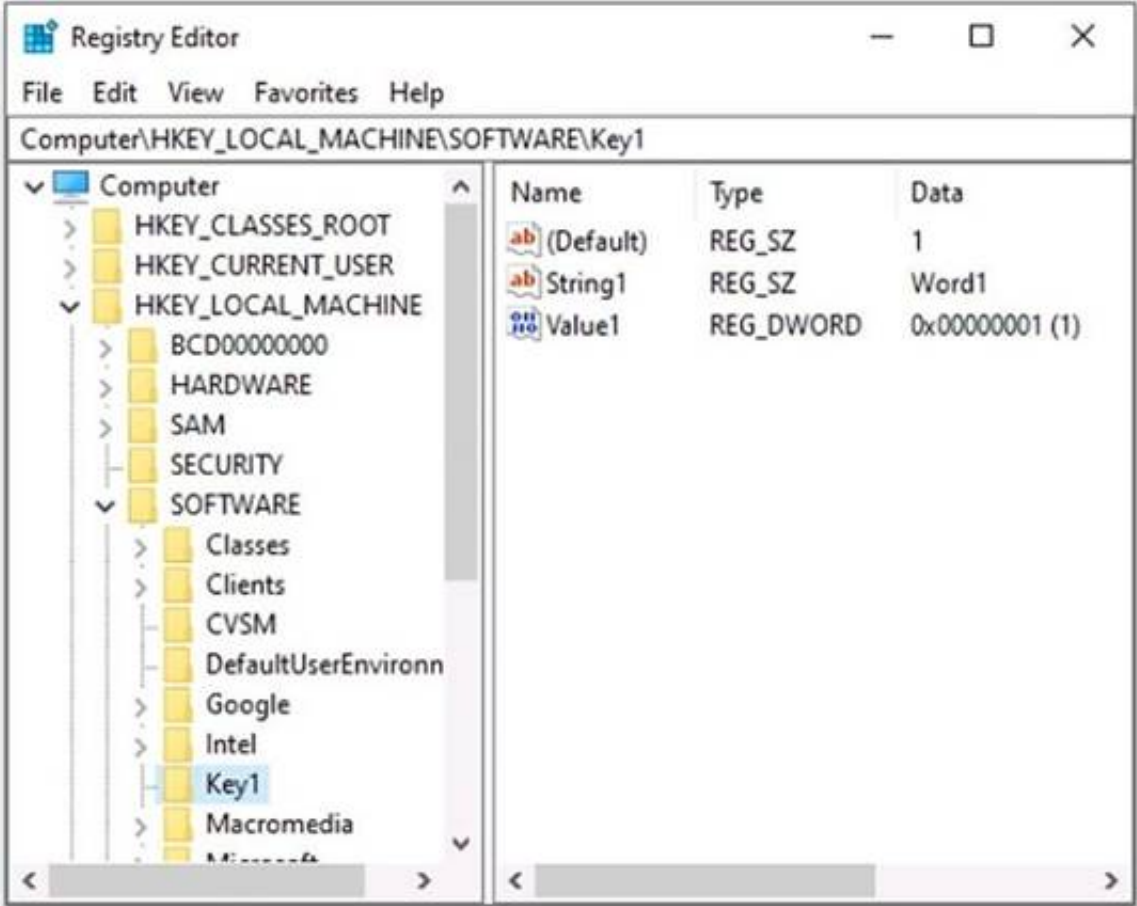
Answer: B

Explanation:

References:  
<https://docs.microsoft.com/en-us/windows/deployment/upgrade/windows-10-upgrade-paths>

NEW QUESTION 268

- (Exam Topic 4)  
You have a computer named Computer1 that runs Windows 10. Computer1 contains a registry key named Key1 that has the values shown in the exhibit. (Click the Exhibit tab.).



You have a Registration Entries (.reg) file named File1.reg that contains the following text.  
Windows Registry Editor Version 5.00 [HKEY\_LOCAL\_MACHINE\SOFTWARE\Key1]  
"String1"=  
@="2"

You need to identify the effect of importing File1.reg to Computer1.  
What should you identify? To answer, select the appropriate options in the answer area.  
NOTE: Each correct selection is worth one point.

String1 will: 

be deleted

have a value of –

have a value of Word1

have no value

Value1 will: 

be deleted

have a value of 1

have a value of 2

have no value

- A. Mastered
- B. Not Mastered

Answer: A

Explanation:

Box 1: String1 will be deleted.



To delete a value, append equals and then minus to the value. For example: "String1"=Box 2: Value1 will have a value of 1  
@="2" sets the default value to 1 but Value1 already has a DWORD value.  
A DWORD (32-bit) value is a hexadecimal value. Value1 is 0x00000001 which is 1. References:  
<https://www.computerhope.com/issues/ch000848.htm> <https://www.computerperformance.co.uk/vista/reg-create/>

#### NEW QUESTION 269

- (Exam Topic 4)

You have a computer that runs Windows 10. You need to configure a picture password.  
What should you do? D18912E1457D5D1DDC BD40AB3BF70D5D

- A. From Control Panel, configure the User Accounts settings.
- B. From the Settings app, configure the Sign-in options.
- C. From the Local Group Policy Editor, configure the Account Policies settings.
- D. From Windows PowerShell, run the Set-LocalUser cmdlet and specify the InputObject parameter.

**Answer:** B

#### NEW QUESTION 272

- (Exam Topic 4)

You have a computer named Computed that runs Windows 11. A feature update is installed on Computed.  
You need to use the Go back recovery option to revert to the previous version. For how many days will the Go back option be available?

- A. 10
- B. 30
- C. 90
- D. 180

**Answer:** B

#### NEW QUESTION 275

- (Exam Topic 4)

You have Windows 10 devices that use custom device drivers.  
You need to test new builds of Windows before the builds are made available to the general public. The solution must ensure that the builds are installed as soon as possible.  
Which Windows readiness level should you configure?

- A. Preview Build - Slow
- B. Semi-Annual Channel
- C. Release Preview
- D. Preview Build - Fast

**Answer:** D

#### NEW QUESTION 278

- (Exam Topic 4)

Your network contains an Active Directory domain. The domain contains 100 computers that run Windows 10.  
You need to configure the computers to send the error events in the System log to a computer named Computer1 that runs Windows 10.  
What should you do? To answer, select the appropriate options in the answer area. NOTE: Each correct selection is worth one point.

#### Answer Area

Computer1:

- |  |
|--|
| Create a source-initiated subscription.                          |
| Create a collector-initiated subscription.                       |
| Create a custom view in Event Viewer.                            |
| Configure Event Forwarding by using a Group Policy Object (GPO). |

100 Windows 10 computers:

- |  |
|--|
| Create a source-initiated subscription.                          |
| Create a collector-initiated subscription.                       |
| Create a custom view in Event Viewer.                            |
| Configure Event Forwarding by using a Group Policy Object (GPO). |

- A. Mastered
- B. Not Mastered

**Answer:** A

#### Explanation:

Source-initiated subscriptions allow you to define a subscription on an event collector computer without defining the event source computers, and then multiple remote event source computers can be set up (using a group policy setting) to forward events to the event collector computer. Source:



<https://learn.microsoft.com/en-us/windows/win32/wec/creating-a-source-initiated-subscription>

#### NEW QUESTION 282

- (Exam Topic 4)

You have a Windows 10 device named Device1.

You plan purchase a wireless display device that will stream audio and video from Device1. Which wireless feature or protocol should the display device support?

- A. Wi-Fi sense
- B. Miracast
- C. near field communications (NFC)
- D. Bluetooth

**Answer:** B

#### NEW QUESTION 284


- (Exam Topic 4)

You have two workgroup computers named Computer1 and Computer2 that run Windows 10. The computers contain the local security principals shown in the following table.


Name	Type	Computer
User1	User	Computer1
GroupA	Group	Computer1
GroupB	Group	Computer1
User2	User	Computer2
GroupC	Group	Computer2

Which security principals can be members of GroupA and GroupC? To answer, select the appropriate options in the answer area.

NOTE: Each correct selection is worth one point.

GroupA: 

User1 only
User1 and User2 only
User1 and GroupB only
User1, User2, GroupB, and GroupC

GroupC: 

User2 only
User1 and User2 only
User1, User2, GroupA, and GroupB

- A. Mastered
- B. Not Mastered

**Answer:** A

#### Explanation:

Graphical user interface, text, application, chat or text message Description automatically generated

#### NEW QUESTION 288

- (Exam Topic 4)

You need to Windows 10 to 20 new laptops.

The laptops will be recommend a solution to lock the laptop when the users leave their laptop for an extended period.

Which two actions should you include in the recommendation? Each correct answer presents part of the solution.

NOTE: Each correct selection is worth one point.

- A. From the settings app, configure the Dynamic lock settings.
- B. From the Settings app, configure the lock screen settings.
- C. Enable Bluetooth discovery.
- D. From the Settings app, configure the Screen timeout settings
- E. Pair the Android device the laptop.
- F. From Sign-in option, configure the Windows hello settings.

**Answer:** BE

#### Explanation:

<https://support.microsoft.com/en-us/help/4028111/windows-lock-your-windows-10-pc-automatically-when-you->

#### NEW QUESTION 289

- (Exam Topic 4)

You have computers that run Windows 10.  
You have users who report issues about computers as shown in the following table.

User name	Computer name	Issue
User1	Computer1	After User1 installs a new application, Computer1 is much slower, occasionally crashes, and must restart.
User2	Computer2	After User 2 installs a feature update, Computer2 freezes frequently and fails to load devices.

You need to resolve the issues as quickly as possible. The solution must minimize manual reconfigurations of the computers.  
What should you do on each computer? To answer, select the appropriate options in the answer area. NOTE: Each correct selection is worth one point.

Answer Area

Computer1:

Uninstall an update.

Restore from a system restore point.

Go back to a previous version of Windows 10.

Computer2:

Uninstall an update.

Restore from a system restore point.

Go back to a previous version of Windows 10.

- A. Mastered
- B. Not Mastered

Answer: A

Explanation:

Answer Area

Computer1:

Uninstall an update.

Restore from a system restore point.

Go back to a previous version of Windows 10.

Computer2:

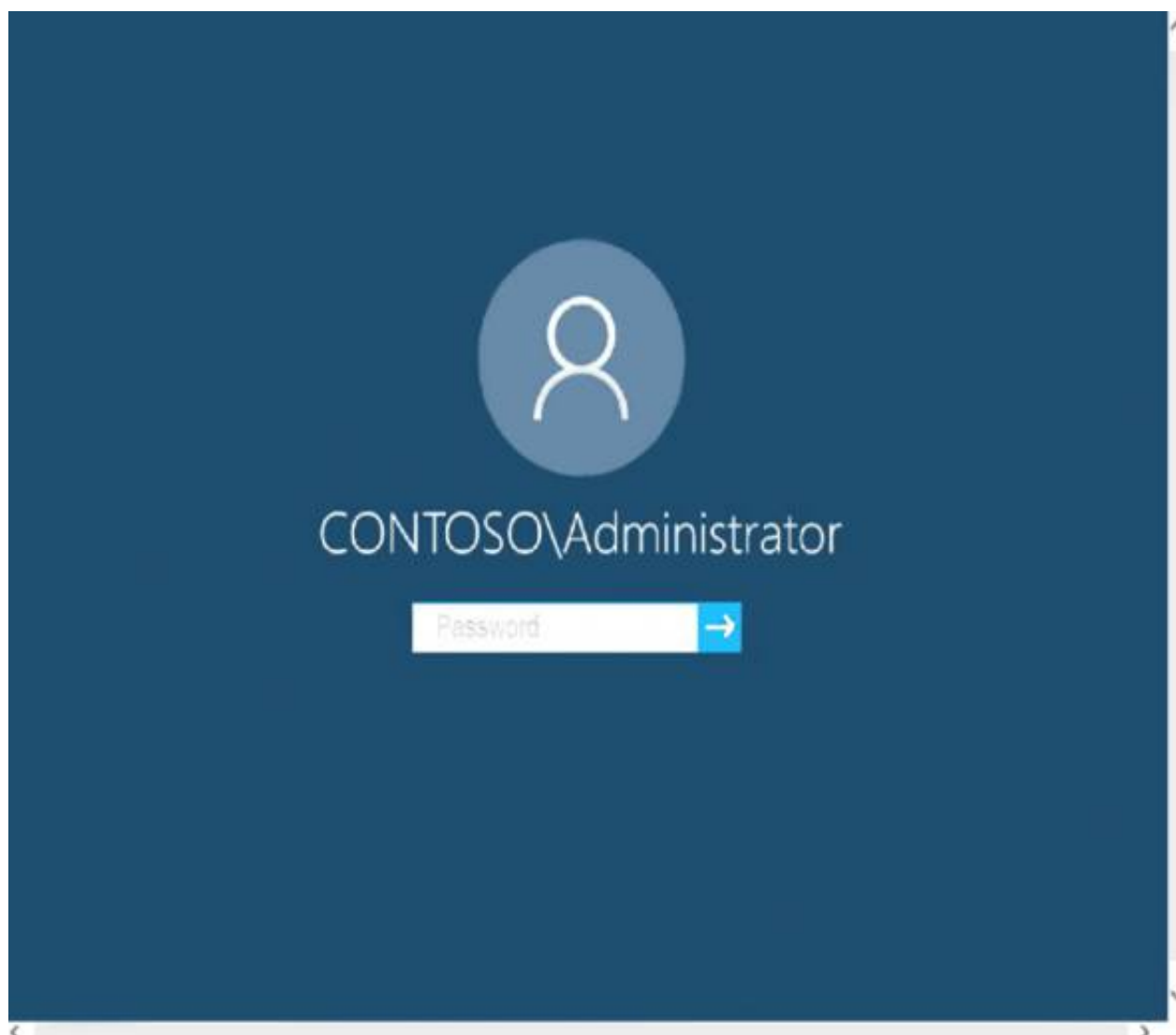
Uninstall an update.

Restore from a system restore point.

Go back to a previous version of Windows 10.

NEW QUESTION 294

- (Exam Topic 4)  
Please wait while the virtual machine loads. Once loaded, you may proceed to the lab section. This may take a few minutes, and the wait time will not be deducted from your overall test time.  
When the Next button is available, click it to access the lab section. In this section, you will perform a set of tasks in a live environment. While most functionality will be available to you as it would be in a live environment, some functionality (e.g., copy and paste, ability to navigate to external websites) will not be possible by design.  
Scoring is based on the outcome of performing the tasks stated in the lab. In other words, it doesn't matter how you accomplish the task, if you successfully perform it, you will earn credit for that task.  
Labs are not timed separately, and this exam may more than one lab that you must complete. You can use as much time as you would like to complete each lab. But, you should manage your time appropriately to ensure that you are able to complete the lab(s) and all other sections of the exam in the time provided.  
Please note that once you submit your work by clicking the Next button within a lab, you will NOT be able to return to the lab.  
Username and password



Use the following login credentials as needed:

To enter your password, place your cursor in the Enter password box and click on the password below.

Username: Contoso/Administrator

Password: Passw0rd!

The following information is for technical support purposes only: Lab Instance: 11145882

Dashboard

Local Server

All Servers

AD DS

DNS

File and Storage Services >

WELCOME TO SERVER MANAGER

QUICK START

WHAT'S NEW

LEARN MORE

1 Configure this local server

2 Add roles and features

3 Add other servers to manage

4 Create a server group

5 Connect this server to cloud services

Hide

ROLES AND SERVER GROUPS

Roles: 3 | Server groups: 1 | Servers total: 1

AD DS 1

Manageability

Events

Services

Performance

BPA results

DNS 1

Manageability

Events

Services

Performance

BPA results

File and Storage Services 1

Manageability

Events

Services

Performance

BPA results

Local Server 1

Manageability

Events

2 Services

Performance

BPA results

1/23/2020 9:30 PM

All Servers 1

Manageability

Events

2 Services

Performance

BPA results

1/23/2020 9:30 PM

Tasks

Computers

Client1

Client2

Client3

DC1

You need to ensure that C:\Scripts\Configure.ps1 runs every time a user sign in to Client2. To complete this task, sign in to the required computer or computers.

- A. Mastered
- B. Not Mastered

**Answer:** A

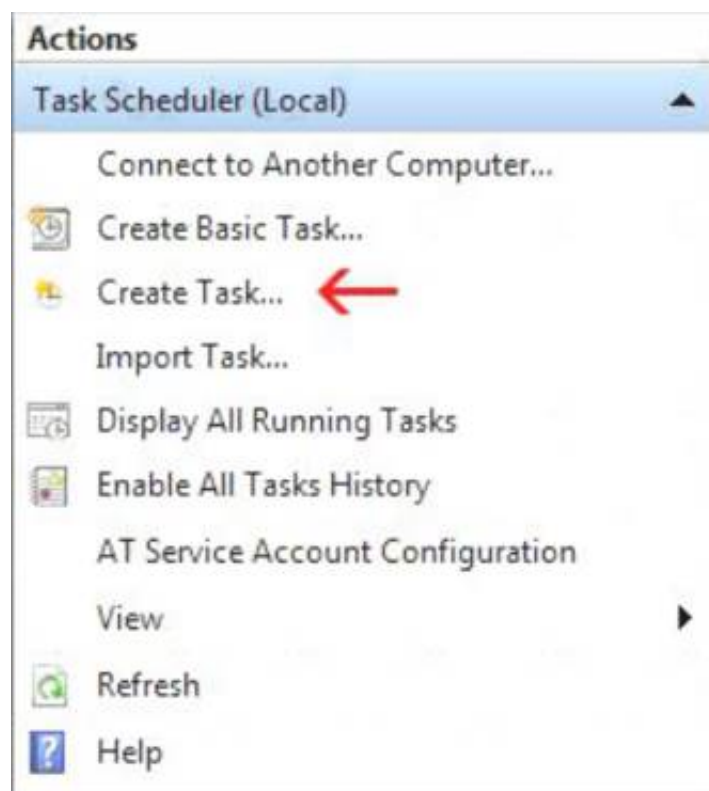
**Explanation:**

Go to the Start menu, type "Task Scheduler" and select it from the search results.



Task Scheduler can also be accessed in the Control Panel under Administrative Tools. In the right side of the Task Scheduler menu, under Actions, select "Create Task."



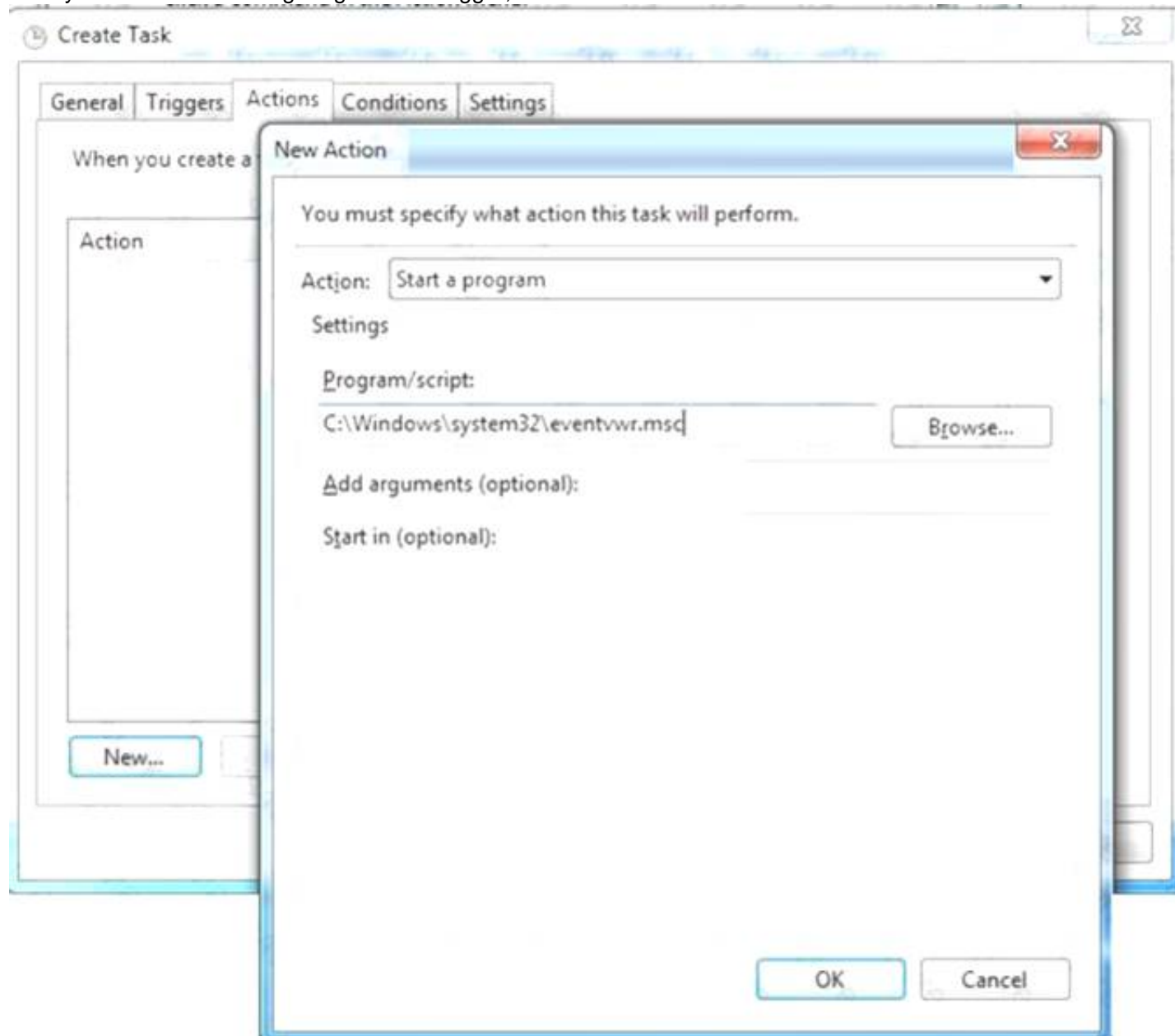


On the General tab, enter a name and description for the task you're creating. Check the box "Run with highest privileges."

Once you have filled out a name and description, click the "Triggers" tab, and then click "New."

In this menu, under "Begin the task:" select "At log on." Choose which user you would like the task to run for at log on. For our purposes, Any user. Configure any of the applicable advanced settings you would like.

After you are finished configuring the new trigger, click OK and then select the "Actions" tab. Click "New" to make a new action.



Choose "Start a program" under the Action menu and then click "Browse" to point to C:\Scripts\Configure.ps1.

Click OK to exit out of the Actions menu. The "Conditions" and "Settings" tabs can be left alone.

Click OK on the Create Task menu, and you are finished. Reference:

<https://www.howtogeek.com/138159/how-to-enable-programs-and-custom-scripts-to-run-at-boot/>

#### NEW QUESTION 297

- (Exam Topic 4)

Your network contains an Active directory domain. The domain contains 1,000 computers that run Windows 10.

You need to prevent computers of the research department from appearing in network in File Explorer. What should you do?

- A. Disable the Network List Service
- B. Configure DNS to use an external provider
- C. Turn off network discovery
- D. Modify the %systemroot%\system32\drivers\etc\Network file

**Answer: C**

### NEW QUESTION 300

- (Exam Topic 4)

You have a computer named Computer1 that runs Windows 11. You plan to change a registry setting on Computer1.

You need to ensure that you can revert to the previous registry setting if the change causes an issue on Computer1. The solution must minimize administrative effort.

Which two actions should you perform? Each correct answer presents part of the solution. NOTE: Each correct selection is worth one point.

- A. Enable system protection.
- B. Enable controlled folder access.
- C. Create a restore point.
- D. Create a recovery drive.
- E. Configure a dynamic lock policy.

**Answer:** AC

### NEW QUESTION 303

- (Exam Topic 4)

You have a computer named Computer1 that runs Windows 10. Computer1 belongs to a workgroup. You run the following commands on Computer1.

New-LocalUser -Name User1 -NoPassword Add-LocalGroupMember User -Member User1 What is the effect of the configurations?

- A. User1 is prevented from signing in until the user is assigned additional user rights.
- B. User1 appears on the sign-in screen and can sign in without a password.
- C. User1 is prevented from signing in until an administrator manually sets a password for the user.
- D. User1 appears on the sign-in screen and must set a new password on the first sign-in attempts.

**Answer:** D

#### Explanation:

References:

<https://docs.microsoft.com/en-us/powershell/module/microsoft.powershell.localaccounts/new-localuser?view=powershell-5.1>

### NEW QUESTION 305

- (Exam Topic 4)

Your network contains an Active Directory domain that is synced to a Microsoft Azure Active Directory (Azure AD) tenant. All users have been issued with laptop computers as well as desktop computers that run Windows 10 Enterprise. All users have Microsoft 365 E3 licenses.

A user named Mia Hamm informs you that she must perform a BitLocker recovery on her laptop but she does not have her BitLocker recovery key.

You need to ensure that Mia Hamm can perform a BitLocker recovery on her laptop. What should you do?

- A. Instruct Mia Hamm to log on to her desktop computer and run the repair-bde.exe command.
- B. Instruct Mia Hamm to use the BitLocker Recovery Password Viewer to view the computer object of the laptop.
- C. Instruct Mia Hamm to log on to her desktop computer and go to <https://account.activedirectory.windowsazure.com> and view the user account profile.
- D. Instruct Mia Hamm to run the Enable-BitLocker cmdlet on her laptop.

**Answer:** C

#### Explanation:

The BitLocker recovery key is stored in Azure Active Directory. Reference:

<https://cedonpartners.com/blog/storing-recovering-bitlocker-keys-azure-active-directory/>

### NEW QUESTION 306

- (Exam Topic 4)

Please wait while the virtual machine loads. Once loaded, you may proceed to the lab section. This may take a few minutes, and the wait time will not be deducted from your overall test time.

When the Next button is available, click it to access the lab section. In this section, you will perform a set of tasks in a live environment. While most functionality will be available to you as it would be in a live

environment, some functionality (e.g., copy and paste, ability to navigate to external websites) will not be possible by design.

Scoring is based on the outcome of performing the tasks stated in the lab. In other words, it doesn't matter how you accomplish the task, if you successfully perform it, you will earn credit for that task.

Labs are not timed separately, and this exam may more than one lab that you must complete. You can use as much time as you would like to complete each lab.

But, you should manage your time appropriately to ensure that you are able to complete the lab(s) and all other sections of the exam in the time provided.

Please note that once you submit your work by clicking the Next button within a lab, you will NOT be able to return to the lab.

Username and password



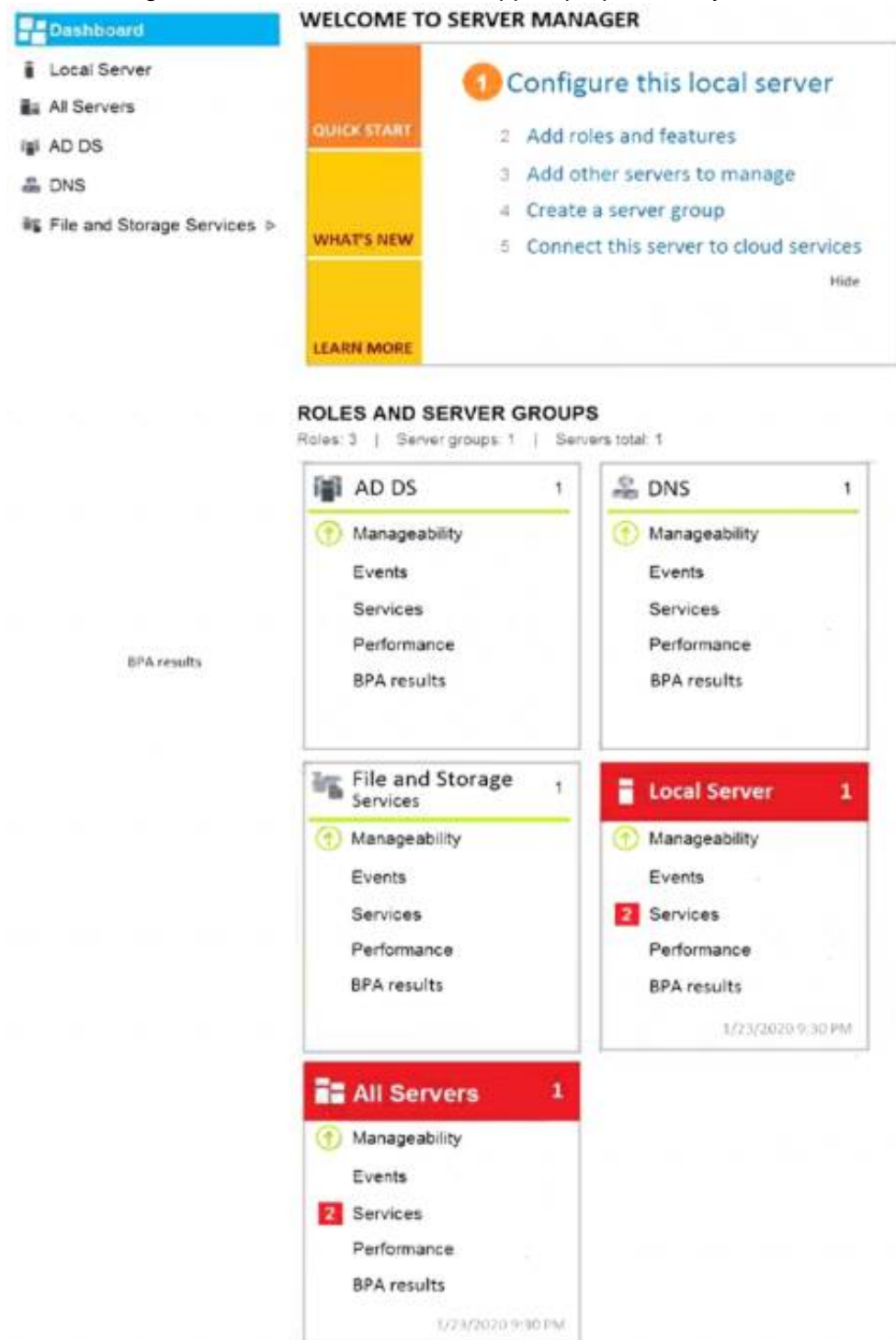
Use the following login credentials as needed:

To enter your password, place your cursor in the Enter password box and click on the password below.

Username: Contoso/Administrator

Password: Passw0rd!

The following information is for technical support purposes only: Lab Instance: 11145882



## Tasks Computers



You need to prevent user names and passwords from being filled in on forms automatically when a user browses to websites from Client2. To complete this task, sign in to the required computer or computers.

- A. Mastered
- B. Not Mastered

**Answer:** A

### Explanation:

- > Open the Local Group Policy Editor.
- > In the left pane of Local Group Policy Editor, navigate to Computer Configuration\Administrative Templates\Windows Components\Microsoft Edge
- > In the right pane of Microsoft Edge in Local Group Policy Editor, double click/tap on the Configure Autofill policy to edit it.
- > Select Disabled, click/tap on OK.
- > In the right pane of Microsoft Edge in Local Group Policy Editor, double click/tap on the
- > Configure Password Manager policy to edit it.
- > Select Disabled, click/tap on OK.
- > You can now close the Local Group Policy Editor.

Reference:

<https://docs.microsoft.com/en-us/microsoft-edge/deploy/available-policies> <https://www.tenforums.com/tutorials/115069-enable-disable-autofill-microsoft-edge-windows-10-a.html>

### NEW QUESTION 311

- (Exam Topic 4)

You have a computer that runs Windows 10 Pro. The computer contains the users shown in the following table.

Name	Description
User1	Member of the local Administrators group
User2	Standard user
User3	Standard user

You need to use a local Group Policy Object (GPO) to configure one group of settings for all the members of the local Administrators group and another group of settings for all non-administrators.

What should you do?

- A. Use the runas command to open Gpedit.msc as each user.
- B. Run mmc as User1 and add the Group Policy Object Editor snap-in twice.
- C. Open Gpedit.msc as User1 and add two Administrative Templates.
- D. Run mmc as User1 and add the Security Templates snap-in twice.

**Answer:** B

### Explanation:

Add the Group Policy Object Editor snap-in twice. Select Browse > Users > Administrators when you add the first snap-in and select Browse > Users > Non-Administrators when you add the second snap-in.

### NEW QUESTION 316

- (Exam Topic 4)

You are preparing to deploy Windows 10.

You download and install the Windows Assessment and Deployment Kit (Windows ADK). You need to create a bootable WinPE USB drive.

What should you do first?



- A. Run the MakeWinPEMedia command.
- B. Download and install Windows Configuration Designer.
- C. Run the WPEUcil command.
- D. Download and install the WinPE add-on.

**Answer:** D

**Explanation:**

WinPE used to be included in the Windows ADK. However, it is now provided as an add-on so the first step is to download and install the add-on.

References:

<https://docs.microsoft.com/en-us/windows-hardware/manufacture/desktop/winpe-create-usb-bootable-drive> <https://docs.microsoft.com/en-us/windows-hardware/get-started/adk-install>

**NEW QUESTION 321**

- (Exam Topic 4)

You have a workgroup computer that runs Windows 10. You create a local user named User1.

User1 needs to be able to share and manage folders located in a folder named C:\Share by using the Shared Folders snap-in. The solution must use the principle of least privilege.

To which group should you add User1?

- A. Device Owners
- B. Users
- C. Power Users
- D. Administrators

**Answer:** D

**NEW QUESTION 324**

- (Exam Topic 4)

You have a computer named Computer1 that runs Windows 10. Computer1 is in a workgroup. Computer1 contains the folders shown in the following table.

Name	Volume	File system	Permission
Folder1	C	NTFS	Full control to Everyone
Folder2	C	NTFS	Full control to Everyone
Folder3	D	NTFS	Full control to Everyone

On Computer1, you create the users shown in the following table.

Name	Member of
User1	Users
User2	Backup Operators, Users
User3	Cryptographic Operators, Users
User4	Administrators, Users

User1 encrypts a file named File1.txt that is in a folder named C:\Folder1.

What is the effect of the configuration? To answer, select the appropriate options in the answer area. NOTE: Each correct selection is worth one point.

Users who can move File1.txt to C:\Folder2:

▼

User1 only

User1 and User2 only

User1, User2, and User3 only

User1, User2, User3, and User4

Users who can move File1.txt to D:\Folder3:

▼

User1 only

User1 and User2 only

User1, User2, and User3 only

User1, User2, User3, and User4

- A. Mastered
- B. Not Mastered

**Answer:** A

**Explanation:**

References:

<https://support.microsoft.com/en-za/help/310316/how-permissions-are-handled-when-you-copy-and-move-files>

**NEW QUESTION 326**

- (Exam Topic 4)

You have computers that run Windows 10 Enterprise as shown in the following table.

Name	Servicing channel
Computer1	Semi-Annual Channel (SAC)
Computer2	Long-Term Servicing Channel (LTSC) 2016

Both computers have applications installed and contain user data.  
You plan to configure both computers to run Windows 10 Enterprise LTSC 2019 and to retain all the existing applications and data.  
You need to recommend a method to deploy Windows 10 Enterprise LTSC 2019 to the computers. The solution must minimize effort to install and configure the applications.  
What should you include in the recommendation for each computer? To answer, select the appropriate options in the answer area.  
NOTE: Each correct selection is worth one point.

Computer1:

Perform a clean installation.

Perform an in-place upgrade.

Update the product key.

Computer2:

Perform a clean installation.

Perform an in-place upgrade.

Update the product key.

- A. Mastered
- B. Not Mastered

Answer: A

**Explanation:**  
Graphical user interface, text, application, chat or text message Description automatically generated  
References:  
<https://docs.microsoft.com/en-us/windows/deployment/upgrade/windows-10-upgrade-paths>

NEW QUESTION 329

- (Exam Topic 4)  
Your network contains an Active Directory domain. The domain contains 100 computers that run Windows 10.  
You need to create a Start menu layout file. The solution must meet the following requirements:

- > Contain an app group named Contoso Apps that has several pinned items. Contoso Apps must be locked from user modification.
- > Ensure that users can customize other parts of the Start screen.
- > Minimize administrative effort.

Which four actions should you perform in sequence? To answer, move the appropriate commands from the list of commands to the answer area and arrange them in the correct order.

Actions

Deploy the start layout.

Modify the StartLayoutCollection XML element.

Modify the DefaultLayoutOverride XML element.

Export the start layout to a file.

On a reference computer, customize the Start menu.

Answer Area

- A. Mastered
- B. Not Mastered

Answer: A

**Explanation:**  
\* 1. On a reference computer, customize the Start menu  
\* 2. Export the start layout to a file  
\* 3. Modify the Defaultlayoutoverride XML element  
\* 4. Deploy the start layout References:  
<https://docs.microsoft.com/en-us/windows/configuration/customize-and-export-start-layout>

NEW QUESTION 332

- (Exam Topic 4)

Your network contains an Active Directory domain named adatum.com that uses Key Management Service (KMS) for activation. You deploy a computer that runs Windows 10 to the domain. The computer fails to activate. You suspect that the activation server has an issue. You need to identify which server hosts KMS. How should you complete the command? To answer, select the appropriate options in the answer area. NOTE: Each correct selection is worth one point.

Get-Host nslookup.exe slmgr.vbs	-Type	A SOA SRV WKS	_vlmcs._tcp.Adatum.com
---------------------------------------	-------	------------------------	------------------------

- A. Mastered
- B. Not Mastered

**Answer:** A

**Explanation:**

References:

<https://blogs.technet.microsoft.com/odsupport/2011/11/14/how-to-discover-office-and-windows-kms-hosts-via-d>

### NEW QUESTION 333

- (Exam Topic 4)

Your company has a main office and a branch office. The offices connect to each other by using a WAN link. Access to the Internet is provided through the main office.

The branch office contains 25 computers that run Windows 10. The computers contain small hard drives that have very little free disk space.

You need to prevent the computers in the branch office from downloading updates from peers on the network. What should you do?

- A. From the Settings app, modify the Delivery Optimizations settings.
- B. Configure the network connections as metered connections.
- C. Configure the computers to use BranchCache in hosted cache mode.
- D. Configure the updates to use the Semi-Annual Channel (Targeted) channel.

**Answer:** C

**Explanation:**

References:

<https://docs.microsoft.com/en-us/windows/deployment/update/waas-branchcache>

### NEW QUESTION 334

- (Exam Topic 4)

You have a computer named Computer1 that runs Windows 10.

You need to modify the Security Settings of Computer1 to meet the following requirements:

- > A local group named Branch\_Admns must be able to view and clear the Security log.
- > Local users must be prompted to change their password three days before the password expires.

Which two nodes of the Local Group Policy Editor should you access to configure the settings? To answer, select the appropriate nodes in the answer area.

NOTE: Each correct selection is worth one point.



- A. Mastered
- B. Not Mastered

**Answer:** A

**Explanation:**

Graphical user interface, text, application, chat or text message Description automatically generated

User Rights Assignment > Manage auditing and security log.

Security Options > Interactive Logon: Prompt user to change password before expiration: 3 days.

### NEW QUESTION 338

- (Exam Topic 4)

Please wait while the virtual machine loads. Once loaded, you may proceed to the lab section. This may take a few minutes, and the wait time will not be deducted from your overall test time.

When the Next button is available, click it to access the lab section. In this section, you will perform a set of tasks in a live environment. While most functionality will be available to you as it would be in a live environment, some functionality (e.g., copy and paste, ability to navigate to external websites) will not be possible by design.

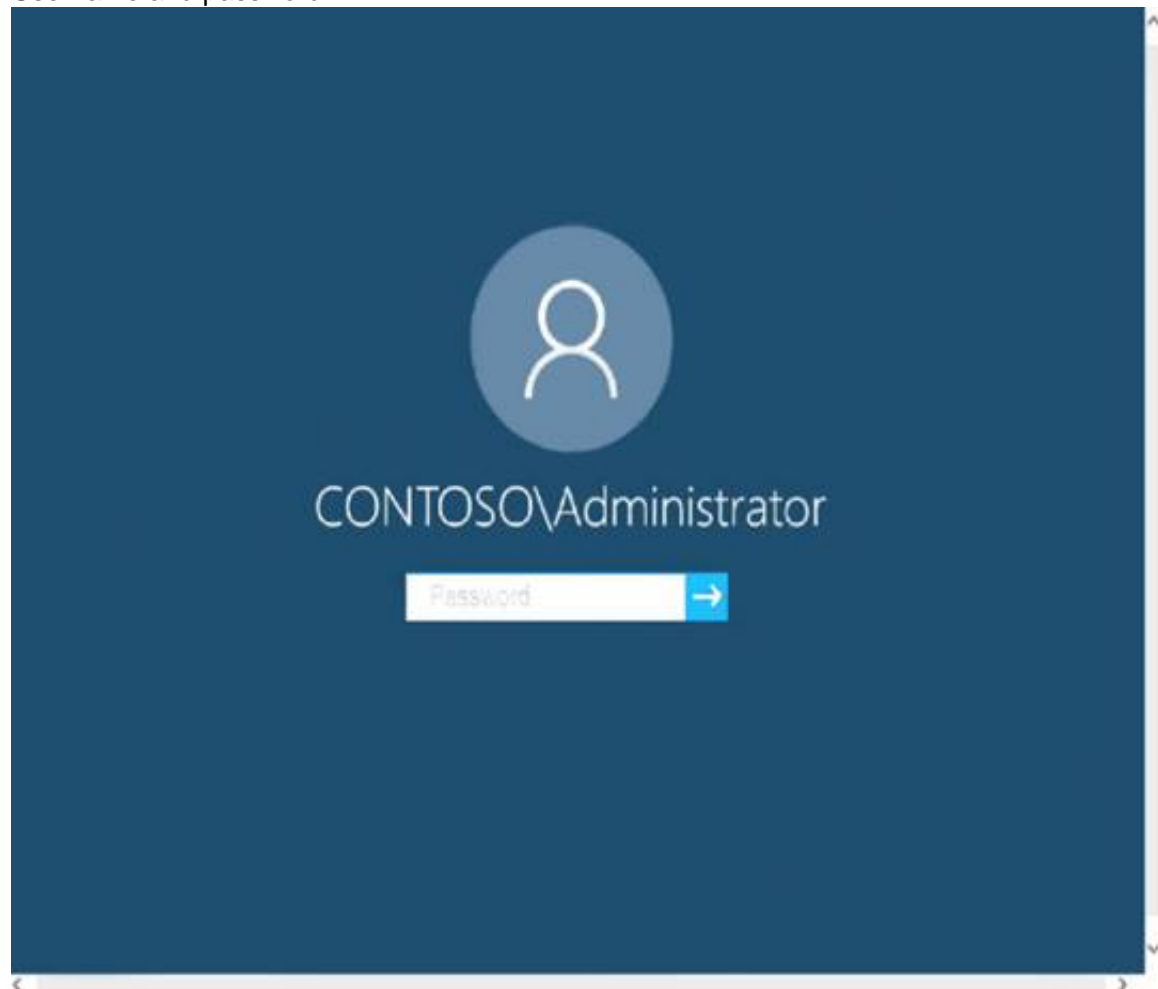
Scoring is based on the outcome of performing the tasks stated in the lab. In other words, it doesn't matter how you accomplish the task, if you successfully perform it, you will earn credit for that task.

Labs are not timed separately, and this exam may more than one lab that you must complete. You can use as much time as you would like to complete each lab.

But, you should manage your time appropriately to ensure that you are able to complete the lab(s) and all other sections of the exam in the time provided.

Please note that once you submit your work by clicking the Next button within a lab, you will NOT be able to return to the lab.

Username and password



Use the following login credentials as needed:

To enter your password, place your cursor in the Enter password box and click on the password below.

Username: Contoso/Administrator

Password: Passw0rd!

The following information is for technical support purposes only:

Lab Instance: 10921597



You need to ensure that you can successfully ping DC1 from Client3 by using the IP4 address of DC1.

To complete this task, sign in to the required computer or computers.

- A. Mastered
- B. Not Mastered

**Answer:** A

#### Explanation:

➤ On Client3, press Windows+R to access Run.



- > Type cmd and click OK to access the command prompt.
- > Type ipconfig and press Enter to check that you have a valid IP address.
- > On Client3, press Windows+R to access Run.
- > Type cmd and click OK to access the command prompt.
- > Type "ping" and the IP address of the Domain Controller (e.g. "ping 172.16.1.43").

Reference:

[http://www.turn-n-burn.com/DestinyNetworks/Downloads/WebHelp3-1-1/Ping\\_the\\_Domain\\_Controller.h](http://www.turn-n-burn.com/DestinyNetworks/Downloads/WebHelp3-1-1/Ping_the_Domain_Controller.h)

#### NEW QUESTION 341

- (Exam Topic 4)

Note: This question is part of a series of questions that present the same scenario. Each question in the series contains a unique solution that might meet the stated goals. Some question sets might have more than one correct solution, while others might not have a correct solution.

After you answer a question in this section, you will NOT be able to return to it. As a result, these questions will not appear in the review screen.

You have a workgroup computer that runs Windows 10. The computer contains the local user accounts shown in the following table.

Name	Member of
Administrator	Administrators
User1	Administrators
User2	Users
User3	Users

You need to configure the desktop background for User1 and User2 only.

Solution: From the local computer policy, you configure the Filter Options settings for the user policy. At a command prompt, you run the gpupdate.exe/Target:user command.

Does this meet the goal?

- A. Yes
- B. No

**Answer: B**

#### NEW QUESTION 344

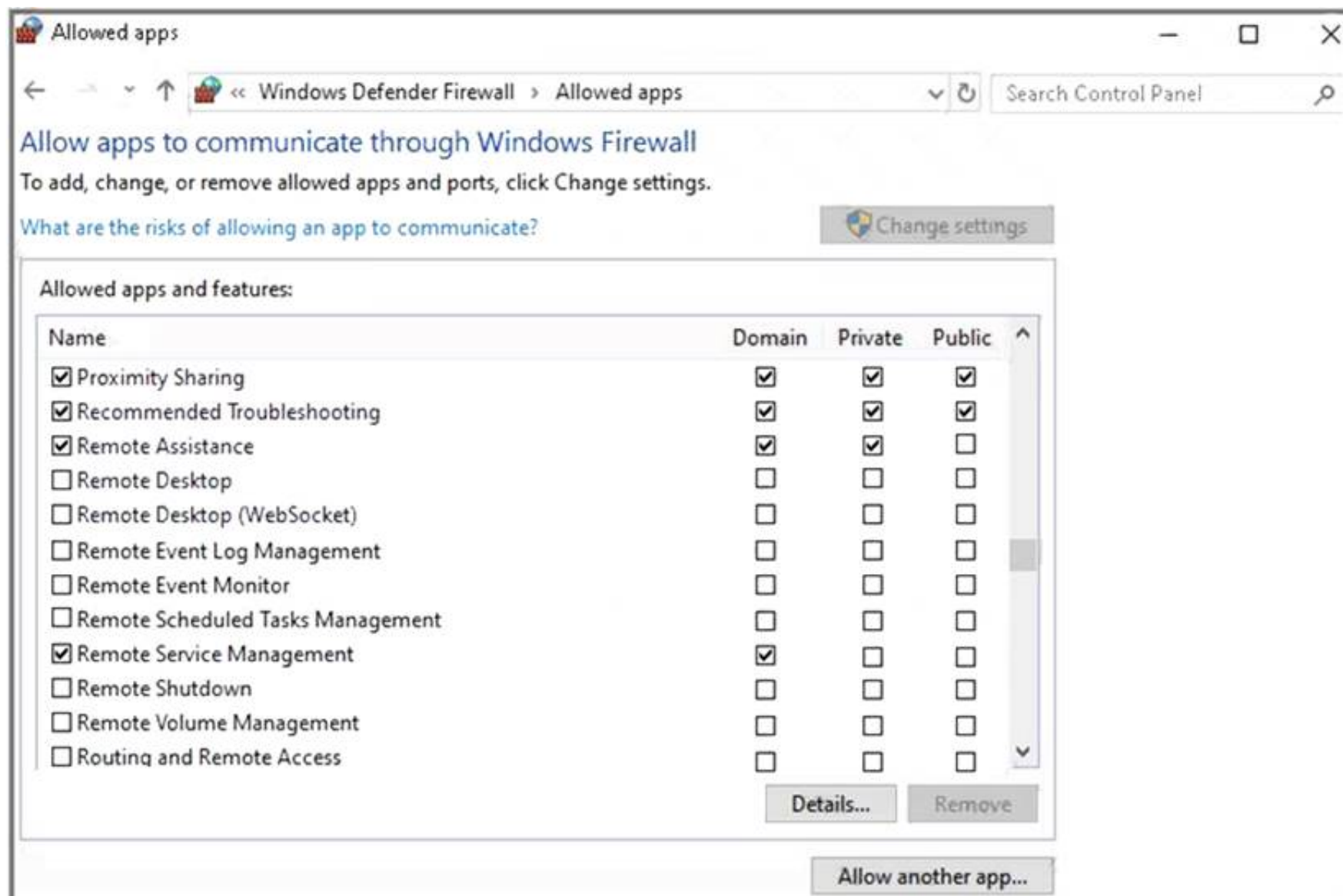
- (Exam Topic 4)

Your network contains an Active Directory domain named adatum.com, a workgroup, and computers that run Windows 10. The computers are configured as shown in the following table.

Name	Member of	Active Windows Defender Firewall profile
Computer1	Adatum.com	Domain
Computer2	Adatum.com	Domain
Computer3	Workgroup	Public

The local Administrator accounts on Computer1, Computer2, and Computer3 have the same user name and password.

On Computer1, Windows Defender Firewall is configured as shown in the following exhibit.



The services on Computer1 have the following states.

Status	Name	DisplayName
Stopped	RasAuto	Remote Access Auto Connection Manager
Running	RasMan	Remote Access Connection Manager
Stopped	RemoteAccess	Routing and Remote Access
Stopped	RemoteRegistry	Remote Registry
Stopped	RetailDemo	Retail Demo Service
Running	RmSvc	Radio Management Service
Running	RpcEptMapper	RPC Endpoint Mapper
Stopped	RpcLocator	Remote Procedure Call (RPC) Locator
Running	RpcSs	Remote Procedure Call (RPC)

For each of the following statements, select Yes if the statement is true. Otherwise, select No.

NOTE: Each correct selection is worth one point.

Statements	Yes	No
From Computer2, you can use Disk Management to manage Computer1 remotely.	<input type="radio"/>	<input type="radio"/>
From Computer2, you can use Registry Editor to edit the registry of Computer1 remotely.	<input type="radio"/>	<input type="radio"/>
From Computer3, you can use Performance Monitor to monitor the performance of Computer1.	<input type="radio"/>	<input type="radio"/>

- A. Mastered
- B. Not Mastered

**Answer:** A

**Explanation:**

Box 1: No

Because the firewall is blocking Remote Volume Management.

Box 2: No

Because the Remote Registry Service is stopped. Box 3: No

Because the Remote Registry Service is stopped. Perfmon needs both the RPC service and the Remote Registry service to be running.

#### NEW QUESTION 348

- (Exam Topic 4)

Note: This question is part of a series of questions that present the same scenario. Each question in the series contains a unique solution that might meet the

stated goals. Some question sets might have more than one correct solution, while others might not have a correct solution. After you answer a question in this section, you will NOT be able to return to it. As a result, these questions will not appear in the review screen. You have a workgroup computer that runs Windows 10. The computer contains the local user accounts shown in the following table.

Name	Member of
Administrator	Administrators
User1	Administrators
User2	Users
User3	Users

You need to configure the desktop background for User1 and User2 only.

Solution: From the local computer policy, you configure the Filter Options settings for the computer policy. Does this meet the goal?

- A. Yes  
B. No

**Answer: B**

#### NEW QUESTION 350

- (Exam Topic 4)

You have a computer named Computer1 that runs Windows 10 and has Windows Assessment and Deployment Kit (Windows ADK) installed. Computer1 has the drives shown in the following table.

Letter	Description
C	Operating system
D	Data drive
E	DVD drive that contains the Windows 10 installation files

You need to create Windows 10 unattended answer file. What should you do first?

- A. From File Explorer, copy Install.wim from drive E to drive D.  
B. From Windows System Image Manager, select Select Windows Image, and then select Install.wim from drive E.  
C. From Windows System Image Manager, select Select Windows Image, and then select Boot.wim from drive E.  
D. From File Explorer, copy Boot.wim from drive E to drive D.

**Answer: A**

#### Explanation:

References:

<https://www.windowscentral.com/how-create-unattended-media-do-automated-installation-windows-10>

#### NEW QUESTION 354

- (Exam Topic 4)

You have a computer named Client1 that runs Windows 11. You perform the following actions on Client1:

- Enable Hyper-V.
- Create a virtual machine that runs Windows 11 Pro.

You need to connect to VM1 by using enhanced session mode. What should you do first?

- A. Enable Remote Assistance on Client1.  
B. Enable Remote Assistance on VM1.  
C. Enable Remote Desktop on VM1.  
D. Enable Remote Desktop on Client1.

**Answer: B**

#### NEW QUESTION 355

.....

## Thank You for Trying Our Product

### We offer two products:

1st - We have Practice Tests Software with Actual Exam Questions

2nd - Questons and Answers in PDF Format

### MD-100 Practice Exam Features:

- \* MD-100 Questions and Answers Updated Frequently
- \* MD-100 Practice Questions Verified by Expert Senior Certified Staff
- \* MD-100 Most Realistic Questions that Guarantee you a Pass on Your FirstTry
- \* MD-100 Practice Test Questions in Multiple Choice Formats and Updatesfor 1 Year

**100% Actual & Verified — Instant Download, Please Click**  
**[Order The MD-100 Practice Test Here](#)**