

Exam Questions 300-420

Designing Cisco Enterprise Networks (ENSLD)

<https://www.2passeasy.com/dumps/300-420/>



NEW QUESTION 1

What is an advantage of designing an out-of-band network management solution?

- A. In the event of a production network outage, network devices can still be managed.
- B. There is no separation between the production network and the management network.
- C. In the event of a production network outage, it can be used as a backup network path.
- D. It is less expensive than an in-band management solution

Answer: A

NEW QUESTION 2

Which OSPF area blocks LSA Type 3, 4 and 5, but allows a default summary route?

- A. normal
- B. stub
- C. NSSA
- D. totally stubby

Answer: D

NEW QUESTION 3

An engineer is designing a QoS policy that queues excess packets for later transmission. Which mechanism must be included in the design?

- A. shaping
- B. WRED
- C. policing
- D. RED

Answer: A

NEW QUESTION 4

Which solution allows overlay VNs to communicate with each other in an SD-WAN Architecture?

- A. External fusion routers can be used to map VNs to VRFs and selectively route traffic between VRFs.
- B. GRE tunneling can be configured between fabric edges to connect one VN to another.
- C. SGTs can be used to permit traffic from one VN to another.
- D. Route leaking can be used on the fabric border nodes to inject routes from one VN to another.

Answer: B

NEW QUESTION 5

Which QoS feature responds to network congestion by dropping lower priority packets?

- A. CBWFQ
- B. tail drop
- C. WRED
- D. strict priority

Answer: C

NEW QUESTION 6

An engineer must design a multicast network for a financial application. Most of the multicast sources also receive multicast traffic (many-to-many deployment model). To better scale routing tables, the design must not use source trees. Which multicast protocol satisfies these requirements?

- A. PIM-SSM
- B. PIM-SM
- C. MSDP
- D. BIDIR-PIM

Answer: B

NEW QUESTION 7

A branch office has a primary L3VPN MPLS connection back to the main office and an IPSEC VPN tunnel that serves as backup. Which design ensures that data is sent over the backup connection only if the primary MPLS circuit is down?

- A. Use EIGRP to establish a neighbor relationship with the main office via L3VPN MPLS and the IPSECVPN tunnel.
- B. Use BGP with the multipath feature enabled to force traffic via the primary path when available.
- C. Use static routes tied to an IP SLA to prefer the primary path while a floating static route points to the backup connection.
- D. Use OSPF with a passive-interface command on the backup connection.

Answer: C

NEW QUESTION 8

Which two best practices must be followed when designing an out-of-band management network? (Choose two.)

- A. Enforce access control
- B. Facilitate network integration
- C. Back up data using the management network
- D. Ensure that the management network is a backup to the data network
- E. Ensure network isolation

Answer: AE

NEW QUESTION 9

A network engineer must connect two sites across a public network using a secure tunneling technology that supports multicast traffic. Which technology must be chosen?

- A. IPsec
- B. GRE
- C. PTP
- D. GRE over IPsec

Answer: D

NEW QUESTION 10

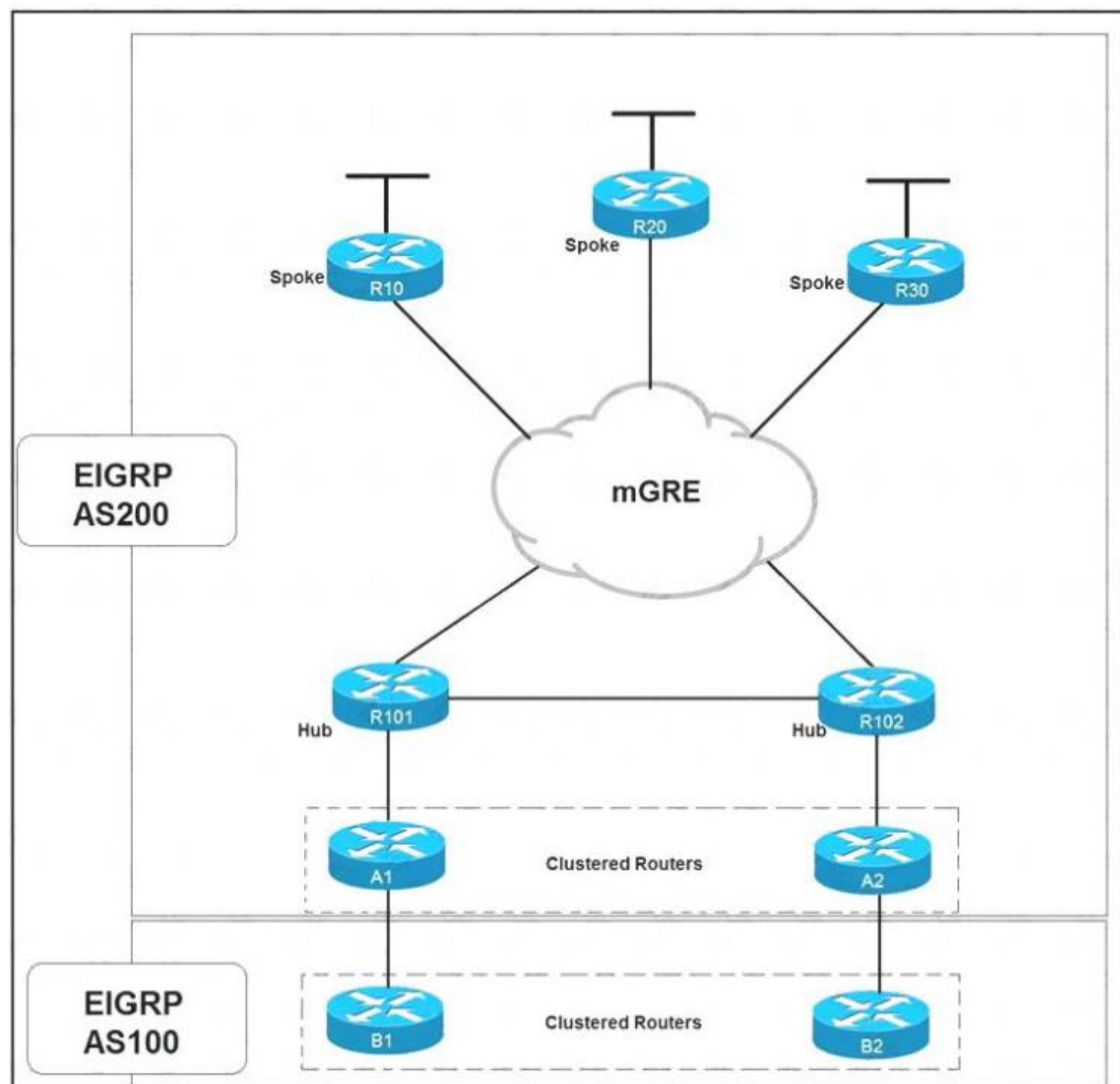
Which nonproprietary mechanism can be used to automate rendezvous point distribution in a large PIM domain?

- A. Embedded RP
- B. BSR
- C. Auto-RP
- D. Static RP

Answer: B

NEW QUESTION 10

Refer to the exhibit.



Which solution decreases the EIGRP convergence time?

- A. Enable subsecond timers
- B. Increase the hold time value
- C. Increase the dead timer value
- D. Enable stub routing on the spokes

Answer: D

NEW QUESTION 11

Which two statements describe source trees in a multicast environment? (Choose two.)

- A. Source trees guarantee the minimum amount of network latency for forwarding multicast traffic
- B. Source trees create an optimal path between the source and the receivers
- C. Source trees use a single common root placed at some chosen point in the network
- D. Source trees can introduce latency in packet delivery
- E. Source trees can create suboptimal paths between the source and the receivers

Answer: AB

NEW QUESTION 15

In an SD-WAN architecture, which methods are used to bootstrap a vEdge router?

- A. DHCP options or manual configuration
- B. vManage or DNS records
- C. ZTP or manual configuration
- D. DNS records or DHCP options

Answer: C

NEW QUESTION 16

Which function are fabric intermediate nodes responsible for in an SD-Access Architecture?

- A. mapping EIDs to RLOCs
- B. encapsulating user traffic in a VXLAN header including the SGT
- C. registering new endpoints in the HTDB
- D. transporting IP packets between edge nodes and border nodes

Answer: D

NEW QUESTION 17

Which two routing protocols allow for unequal cost load balancing? (Choose two.)

- A. EIGRP
- B. IS-IS
- C. BGP
- D. OSPF
- E. RIPng

Answer: AC

NEW QUESTION 19

A company with multiple service providers wants to speed up BGP convergence time in the event a failure occurs with their primary link. Which approach achieves this goal and does not impact router CPU utilization?

- A. Utilize BFD and tune the multiplier to 50
- B. Lower the BGP hello interval
- C. Decrease the BGP keepalive timer
- D. Utilize BFD and keep the default BGP timers

Answer: C

NEW QUESTION 20

Which design consideration should be observed when EIGRP is configured on Data Center switches?

- A. Perform manual summarization on all Layer 3 interfaces to minimize the size of the routing table.
- B. Prevent unnecessary EIGRP neighborships from forming across switch virtual interfaces.
- C. Lower EIGRP hello and hold timers to their minimum settings to ensure rapid route reconvergence.
- D. Configure multiple EIGRP autonomous systems to segment Data Center services and applications.

Answer: A

NEW QUESTION 22

A customer with an IPv4 only network topology wants to enable IPv6 connectivity while preserving the IPv4 topology services. The customer plans to migrate IPv4 services to the IPv6 topology, then decommission the IPv4 topology. Which topology supports these requirements?

- A. dual stack

- B. 6VPE
- C. 6to4
- D. NAT64

Answer: A

NEW QUESTION 24

Which routes does the overlay management protocol advertise in an SD-WAN overlay?

- A. underlay, MPLS, and overlay
- B. primary, backup, and load-balanced
- C. prefix, TLOC, and service
- D. Internet, MPLS, and backup

Answer: C

NEW QUESTION 25

Company A recently acquired another company. Users of the newly acquired company must be able to access a server that exists on Company A's network, both companies use overlapping IP address ranges. Which action conserves IP address space and provides access to the server?

- A. Use a single IP address to create overload NAT
- B. Use a single IP address to create a static NAT entry
- C. Build one-to-one NAT translation for every user that needs access
- D. Re-IP overlapping address space in the acquired company

Answer: A

NEW QUESTION 26

Which design consideration must be made when using IPv6 overlay tunnels?

- A. Overlay tunnels that connect isolated IPv6 networks can be considered a final IPv6 network architecture.
- B. Overlay tunnels should only be considered as a transition technique toward a permanent solution.
- C. Overlay tunnels can be configured only between border devices and require only the IPv6 protocol stack.
- D. Overlay tunneling encapsulates IPv4 packets in IPv6 packets for delivery across an IPv6 infrastructure.

Answer: C

NEW QUESTION 27

What are two benefits of designing an SD-WAN network fabric with direct Internet access implemented at every site? (Choose two.)

- A. It decreases latency to applications hosted by public cloud service provider.
- B. It decreases latency on Internet circuits.
- C. It increases the speed of delivery of site deployments through zero-touch provisioning.
- D. It increases the total available bandwidth on Internet circuits.
- E. It alleviates network traffic on MPLS circuits.

Answer: AE

NEW QUESTION 30

Which consideration must be taken into account when using the DHCP relay feature in a Cisco SD-Access Architecture?

- A. DHCP-relay must be enabled on fabric edge nodes to provide the correct mapping of DHCP scope to the local anycast gateway.
- B. A DHCP server must be enabled on the border nodes to allow subnets to span multiple fabric edges.
- C. DHCP servers must support Cisco SD-Access extensions to correctly assign IPs to endpoints in an SDAccess fabric with anycast gateway.
- D. DHCP Option-82 must be enabled to map the circuit IP option to the access fabric node where the DHCP discover originated.

Answer: A

NEW QUESTION 33

Which two BGP features will result in successful route exchanges between eBGP neighbors sharing the same AS number? (Choose two.)

- A. advertise-best-external
- B. bestpath as-path ignore
- C. client-to-client reflection
- D. as-override
- E. allow-as-in

Answer: DE

NEW QUESTION 36

A network solution is being designed for a company that connects to multiple Internet service providers. Which Cisco proprietary BGP path attribute will influence outbound traffic flow?

- A. Local Preference
- B. MED

- C. Weight
- D. AS Path
- E. Community

Answer: C

NEW QUESTION 40

An organization is designing a detailed QoS plan that limits bandwidth to specific rates. Which two parameters are supported by the traffic policing feature? (Choose two.)

- A. violating
- B. marking
- C. shaping
- D. bursting
- E. conforming

Answer: BC

NEW QUESTION 44

An engineer is designing an enterprise campus network. The LAN infrastructure consists of switches from multiple vendors, and Spanning Tree must be used as a Layer 2 loop prevention mechanism. All configured VLANs must be grouped in two STP instances. Which standards-based Spanning Tree technology supports this design solution?

- A. MSTP
- B. RSTP
- C. Rapid PVST
- D. STP

Answer: A

NEW QUESTION 46

A router running ISIS is showing high CPU and bandwidth utilization. An engineer discovers that the router is configured as L1/L2 and has L1 and L2 neighbors. Which step optimizes the design to address the issue?

- A. Make this router a DIS for each of the interfaces
- B. Disable the default behavior of advertising the default route on the L1/L2 router
- C. Configure the router to be either L1 or L2
- D. Configure each interface as either L1 or L2 circuit type

Answer: D

NEW QUESTION 50

.....

THANKS FOR TRYING THE DEMO OF OUR PRODUCT

Visit Our Site to Purchase the Full Set of Actual 300-420 Exam Questions With Answers.

We Also Provide Practice Exam Software That Simulates Real Exam Environment And Has Many Self-Assessment Features. Order the 300-420 Product From:

<https://www.2passeasy.com/dumps/300-420/>

Money Back Guarantee

300-420 Practice Exam Features:

- * 300-420 Questions and Answers Updated Frequently
- * 300-420 Practice Questions Verified by Expert Senior Certified Staff
- * 300-420 Most Realistic Questions that Guarantee you a Pass on Your FirstTry
- * 300-420 Practice Test Questions in Multiple Choice Formats and Updatesfor 1 Year