

Fortinet

Exam Questions FCSS_SASE_AD-23

FCSS FortiSASE 23 Administrator



NEW QUESTION 1

To complete their day-to-day operations, remote users require access to a TCP-based application that is hosted on a private web server. Which FortiSASE deployment use case provides the most efficient and secure method for meeting the remote users' requirements?

- A. SD-WAN private access
- B. inline-CASB
- C. zero trust network access (ZTNA) private access
- D. next generation firewall (NGFW)

Answer: C

Explanation:

Zero Trust Network Access (ZTNA) private access provides the most efficient and secure method for remote users to access a TCP-based application hosted on a private web server. ZTNA ensures that only authenticated and authorized users can access specific applications based on predefined policies, enhancing security and access control.

? Zero Trust Network Access (ZTNA):

? Secure and Efficient Access:

References:

? FortiOS 7.2 Administration Guide: Provides detailed information on ZTNA and its deployment use cases.

? FortiSASE 23.2 Documentation: Explains how ZTNA can be used to provide secure access to private applications for remote users.

NEW QUESTION 2

A customer wants to upgrade their legacy on-premises proxy to a cloud-based proxy for a hybrid network. Which FortiSASE features would help the customer to achieve this outcome?

- A. SD-WAN and NGFW
- B. SD-WAN and inline-CASB
- C. zero trust network access (ZTNA) and next generation firewall (NGFW)
- D. secure web gateway (SWG) and inline-CASB

Answer: D

Explanation:

For a customer looking to upgrade their legacy on-premises proxy to a cloud-based proxy for a hybrid network, the combination of Secure Web Gateway (SWG) and Inline Cloud Access Security Broker (CASB) features in FortiSASE will provide the necessary capabilities.

? Secure Web Gateway (SWG):

? Inline Cloud Access Security Broker (CASB):

References:

? FortiOS 7.2 Administration Guide: Details on SWG and CASB features.

? FortiSASE 23.2 Documentation: Explains how SWG and inline-CASB are used in cloud-based proxy solutions.

NEW QUESTION 3

Refer to the exhibits.

Managed Endpoints

Endpoint	VPN Username	Management Connection	ZTNA Tags (Simple)	FortiClient Version	Vulnerabilities Detected
Win10-Pro	use2@fortinettraining.lab	Online	FortiSASE-Compliant	7.0.10.0538	140
Win7-Pro	use1@fortinettraining.lab	Online	FortiSASE-Non-Compliant, FortiSASE-Compliant	7.0.8.0427	176

Secure Internet Access Policy

+ Create Edit Delete Search						
<input type="checkbox"/>	Name	Profile Group	Source	User	Destination	Action
<input type="checkbox"/>	Botnet Deny		all	All VPN Users	Botnet-C&C Server	Deny
<input type="checkbox"/>	Non-Compliant		FortiSASE-Non-Compliant	All VPN Users	All Internet Traffic	Deny
<input type="checkbox"/>	Web Traffic	SIA	FortiSASE-Compliant	VPN_Users	All Internet Traffic	Accept
<input type="checkbox"/>	Allow-All	Default		All VPN Users	All Internet Traffic	Accept
<input type="checkbox"/>	Implicit Deny		all	All VPN Users	All Internet Traffic	Deny

WiMO-Pro and Win7-Pro are endpoints from the same remote location. WiMO-Pro can access the internet though FortiSASE, while Wm7-Pro can no longer access the internet Given the exhibits, which reason explains the outage on Wm7-Pro?

- A. The Win7-Pro device posture has changed.
- B. Win7-Pro cannot reach the FortiSASE SSL VPN gateway
- C. The Win7-Pro FortiClient version does not match the FortiSASE endpoint requirement.
- D. Win-7 Pro has exceeded the total vulnerability detected threshold.

Answer: D

Explanation:

Based on the provided exhibits, the reason why the Win7-Pro endpoint can no longer access the internet through FortiSASE is due to exceeding the total vulnerability detected threshold. This threshold is used to determine if a device is compliant with the security requirements to access the network.

? Endpoint Compliance:

? Vulnerability Threshold:

? Impact on Network Access:

References:

? FortiOS 7.2 Administration Guide: Provides information on endpoint compliance and vulnerability management.

? FortiSASE 23.2 Documentation: Explains how vulnerability thresholds are used to determine endpoint compliance and access control.

NEW QUESTION 4

Which two components are part of onboarding a secure web gateway (SWG) endpoint? (Choose two)

- A. FortiSASE CA certificate
- B. proxy auto-configuration (PAC) file
- C. FortiSASE invitation code
- D. FortiClient installer

Answer: AB

Explanation:

Onboarding a Secure Web Gateway (SWG) endpoint involves several components to ensure secure and effective integration with FortiSASE. Two key components are the FortiSASE CA certificate and the proxy auto-configuration (PAC) file.

? FortiSASE CA Certificate:

? Proxy Auto-Configuration (PAC) File:

References:

? FortiOS 7.2 Administration Guide: Details on onboarding endpoints and configuring SWG.

? FortiSASE 23.2 Documentation: Explains the components required for integrating endpoints with FortiSASE and the process for deploying the CA certificate and PAC file.

NEW QUESTION 5

An organization wants to block all video and audio application traffic but grant access to videos from CNN Which application override action must you configure in the Application Control with Inline-CASB?

- A. Allow
- B. Pass
- C. Permit
- D. Exempt

Answer: D

Explanation:

? Application Control Configuration:

? Blocking Video and Audio Applications:

? Granting Access to Specific Videos (CNN):

? Configuration Steps:

References:

? FortiOS 7.2 Administration Guide: Detailed steps on configuring Application Control and Inline-CASB.

? Fortinet Training Institute: Provides scenarios and examples of using Application Control with Inline-CASB for specific use cases.

NEW QUESTION 6

What are two advantages of using zero-trust tags? (Choose two.)

- A. Zero-trust tags can be used to allow or deny access to network resources
- B. Zero-trust tags can determine the security posture of an endpoint.
- C. Zero-trust tags can be used to create multiple endpoint profiles which can be applied to different endpoints
- D. Zero-trust tags can be used to allow secure web gateway (SWG) access

Answer: AB

Explanation:

Zero-trust tags are critical in implementing zero-trust network access (ZTNA) policies. Here are the two key advantages of using zero-trust tags:

? Access Control (Allow or Deny):

? Determining Security Posture:

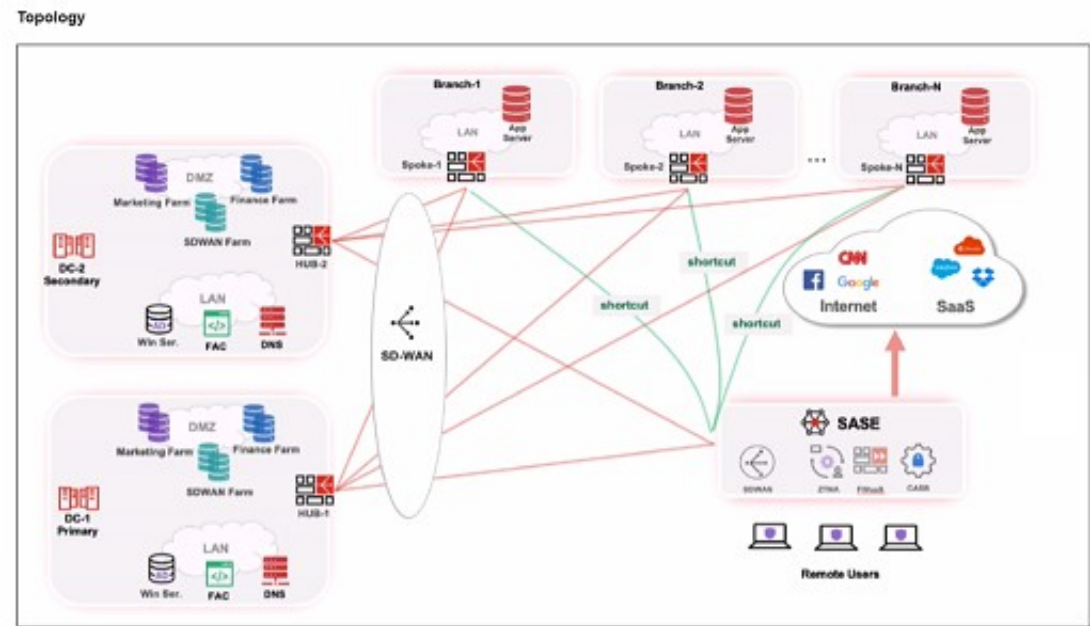
References:

? FortiOS 7.2 Administration Guide: Provides detailed information on configuring and using zero-trust tags for access control and security posture assessment.

? FortiSASE 23.2 Documentation: Explains how zero-trust tags are implemented and used within the FortiSASE environment for enhancing security and compliance.

NEW QUESTION 7

Refer to the exhibits.



Priority settings

Set Priority

Ashburn - Virginia - USA

<input type="checkbox"/>	Name	Priority
<input type="checkbox"/>	HUB-1	P1 <div></div> (Highest Priority)
<input type="checkbox"/>	HUB-2	P2 <div></div>

When remote users connected to FortiSASE require access to internal resources on Branch-2. how will traffic be routed?

- A. FortiSASE will use the SD-WAN capability and determine that traffic will be directed to HUB-2. which will then route traffic to Branch-2.
- B. FortiSASE will use the AD VPN protocol and determine that traffic will be directed to Branch-2 directly, using a static route
- C. FortiSASE will use the SD-WAN capability and determine that traffic will be directed to HUB-1, which will then route traffic to Branch-2.
- D. FortiSASE will use the AD VPN protocol and determine that traffic will be directed to Branch-2 directly, using a dynamic route

Answer: C

Explanation:

When remote users connected to FortiSASE require access to internal resources on Branch-2, the following process occurs:

? SD-WAN Capability:

? Traffic Routing Decision:

? Branch-2 Access:

References:

? FortiOS 7.2 Administration Guide: Details on SD-WAN configurations and priority settings.

? FortiSASE 23.2 Documentation: Explains how FortiSASE integrates with SD-WAN to route traffic based on defined priorities and performance metrics.

NEW QUESTION 10

.....

Thank You for Trying Our Product

We offer two products:

1st - We have Practice Tests Software with Actual Exam Questions

2nd - Questions and Answers in PDF Format

FCSS_SASE_AD-23 Practice Exam Features:

- * FCSS_SASE_AD-23 Questions and Answers Updated Frequently
- * FCSS_SASE_AD-23 Practice Questions Verified by Expert Senior Certified Staff
- * FCSS_SASE_AD-23 Most Realistic Questions that Guarantee you a Pass on Your FirstTry
- * FCSS_SASE_AD-23 Practice Test Questions in Multiple Choice Formats and Updatesfor 1 Year

100% Actual & Verified — Instant Download, Please Click
[Order The FCSS_SASE_AD-23 Practice Test Here](#)