



Cisco

Exam Questions 350-601

Implementing and Operating Cisco Data Center Core Technologies

About ExamBible

[Your Partner of IT Exam](#)

Found in 1998

ExamBible is a company specialized on providing high quality IT exam practice study materials, especially Cisco CCNA, CCDA, CCNP, CCIE, Checkpoint CCSE, CompTIA A+, Network+ certification practice exams and so on. We guarantee that the candidates will not only pass any IT exam at the first attempt but also get profound understanding about the certificates they have got. There are so many alike companies in this industry, however, ExamBible has its unique advantages that other companies could not achieve.

Our Advances

* 99.9% Uptime

All examinations will be up to date.

* 24/7 Quality Support

We will provide service round the clock.

* 100% Pass Rate

Our guarantee that you will pass the exam.

* Unique Gurantee

If you do not pass the exam at the first time, we will not only arrange FULL REFUND for you, but also provide you another exam of your claim, ABSOLUTELY FREE!

NEW QUESTION 1

A network administrator must configure an extra keyring in Cisco UCS Manager. The key must provide a high level of encryption and secure authentication when users use the web interface. Which configuration command set must be applied to meet these requirements?

- ☒ `set https keyring kring7984`
`set https cipher-suite-mode secure`
`set https ssl-protocol tls1-2`
`commit-buffer`
- ☐ `set https keyring kring7984`
`set https cipher-suite-mode secure`
`set https tls-protocol tls1-2`
`commit-buffer`
- ☐ `set https keyring kring7984`
`set https cipher-suite-mode high`
`set https ssl-protocol tls1-2#`
`commit-buffer`
- ☐ `set https keyring kring7984`
`set https cipher-suite-mode high`
`set https tls-protocol tls1-2`
`commit-buffer`

- A. Option A
- B. Option B
- C. Option C
- D. Option D

Answer: C

Explanation:

https://www.cisco.com/c/en/us/td/docs/unified_computing/ucs/ucs-manager/CLI-User-Guides/Admin-Managem "cipher-suite-mode secure" is invalid command. "Cipher-suite-mode high" is valid command. "tls-protocol tls1-2" is invalid command. "Ssl-protocol tls1-2" is valid command.

```
UCS-A# scope system
UCS-A /system # scope services
UCS-A /system/services # enable https
UCS-A /system/services* # set https port 443
Warning: When committed, this closes all the web sessions.
UCS-A /system/services* # set https keyring kring7984
UCS-A /system/services* # set https cipher-suite-mode high
UCS-A /system/services* # set https ssl-protocol tls1-2
UCS-A /system/services* # commit-buffer
UCS-A /system/services #
```

NEW QUESTION 2

A network administrator is creating a custom Django self-service portal that runs on a Linux server to automate the creation of new VLANs on Cisco UCS Manager. Which feature must be installed and configured on the server?

- A. Cisco ucs Powertool Suite
- B. Cisco DNA Center API
- C. Cisco AppDynamics
- D. Cisco UCS Python SDK

Answer: C

NEW QUESTION 3

An engineer creates a service profile in Cisco UCS Manager and must assign a policy that reboots blades when changes are applied. The changes must be applied only after user acknowledgment. Which two policies must be configured to meet these requirements? (Choose two.)

- A. Boot Policy
- B. Global Policy
- C. Power Control Policy
- D. Maintenance Policy
- E. Reboot Policy

Answer: DE

Explanation:

https://www.cisco.com/c/en/us/td/docs/unified_computing/ucs/ucs-manager/GUI-User-Guides/Admin-Managem

Maintenance Policy

The maintenance policy specifies how deploys the service profile changes. The deployment can occur in one of the following ways:

- Immediately
- When acknowledged by a user with administrator privileges
- Automatically at the time specified in a schedule
- On the next reboot or shutdown without waiting for the user acknowledgment or the timer scheduling option

Reboot Policy field

When a service profile is associated with a server, or when changes are made to a service profile that is already associated with a server, you must reboot the server to complete the process. The **Reboot Policy** field determines when the reboot occurs for servers associated with any service profiles that include this maintenance policy. This can be one of the following:

- **Immediate**—The server reboots automatically as soon as the service profile association is complete or when you save service profile changes.
- **User Ack**—You must explicitly acknowledge the pending activities for the changes made to the service profile to be applied to the associated server.
- **Timer Automatic**—Cisco UCS defers all service profile associations and changes until the maintenance window defined by the schedule shown in the **Schedule** field.
- **On Next Boot**—This option is used in combination with either **User Ack** or **Timer Automatic**. When the **On Next Boot** option is enabled, the host OS reboot, shutdown, and reset, or server reset and shutdown also triggers the associated FSM to apply the changes waiting for the **User Ack**, or the **Timer Automatic** maintenance window.

Note De-selecting the On Next Boot option disables the Maintenance Policy on the BMC.

NEW QUESTION 4

An engineer needs to Implement a solution that prevents loops from occurring accidentally by connecting a switch to interface Ethernet1/1. The port is designated to be used for host connectivity. What configuration should be implemented?

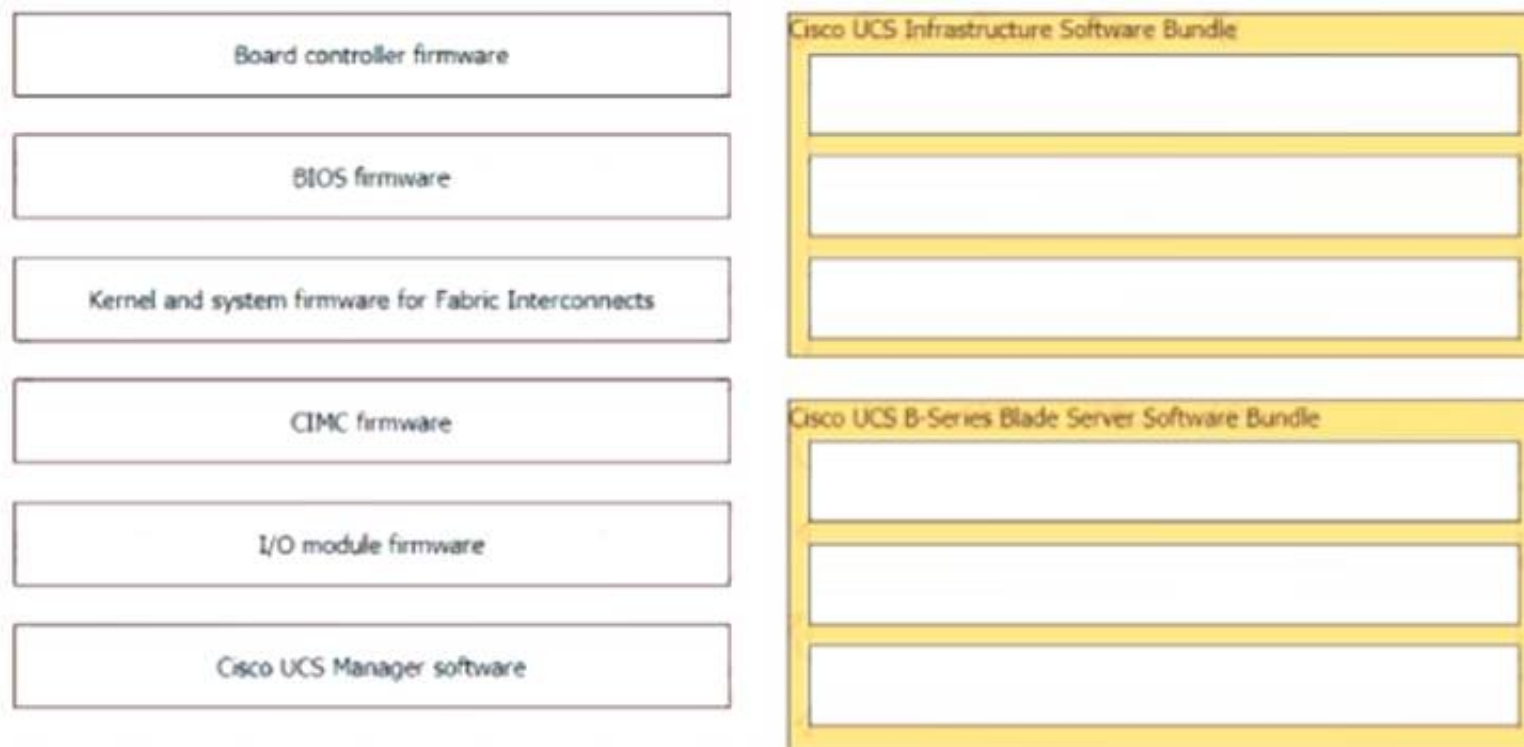
- ☐ switch# configure terminal
switch(config)# interface Ethernet1/1
switch(config-if)# spanning-tree guard loop
- ☐ switch# configure terminal
switch(config)# interface Ethernet1/1
switch(config-if)# spanning-tree bpduguard enable
- ☐ switch# configure terminal
switch(config)# interface Ethernet1/1
switch(config-if)# spanning-tree bpduguard enable
- ☐ switch# configure terminal
switch(config)# interface Ethernet1/1
switch(config-if)# spanning-tree loopguard default

- A. Option A
- B. Option B
- C. Option C
- D. Option D

Answer: C

NEW QUESTION 5

Drag and drop the firmware packages from the left onto the software bundles they belong to on the right.



- A. Mastered
- B. Not Mastered

Answer: A

Explanation:

Diagram Description automatically generated

NEW QUESTION 6

Which two methods are available to Manage an ACI REST API session authentication when a user is unauthenticated?

- A. POST to aaaLogin
- B. POST to aaaUserLogin
- C. GET aaaRefresh
- D. GET to aaaListDomains
- E. DELETE to aaaLogout

Answer: AC

Explanation:

These API methods enable you to manage session authentication:

aaaLogin —Sent as a POST message, this method logs in a user and opens a session. The message body contains an aaa:User object with the name and password attributes, and the response contains a session token and cookie. If multiple AAA login domains are configured, you must prepend the user's name with apic: domain\\ .

aaaRefresh —Sent as a GET message with no message body or as a POST message with the aaaLogin message body, this method resets the session timer. The response contains a new session token and cookie.

aaaLogout —Sent as a POST message, this method logs out the user and closes the session. The message body contains an aaa:User object with the name attribute. The response contains an empty data structure.

aaaListDomains —Sent as a GET message, this method returns a list of valid AAA login domains. You can send this message without logging in.

https://www.cisco.com/c/en/us/td/docs/switches/datacenter/aci/apic/sw/2-x/rest_cfg/2_1_x/b_Cisco_APIC_REST_API_Configuration_Guide/b_Cisco_APIC_REST_API_Configuration_Guide_chapter_01.html

NEW QUESTION 7

Which statement about the MAC address that the FCoE Initialization Protocol chooses for use by an E-Node in an FCoE implementation is true?

- A. The FCoE Initialization Protocol uses the burned-in MAC address of the converged network adapter for all FCoE operations.
- B. The FCoE Initialization protocol uses a 24-bit FC-MAP and concatenates a 24-bit Fibre Channel ID to create a fibric-provided MAC address.
- C. The FCoE Initialization Protocol uses 01.00.0C as the first 24 bits of the MAC address and appends a 24-bit Fibre Channel ID to derive a full 48-bit FCoE MAC address.
- D. FCoE does not use a MAC address
- E. The FCoE Initialization Protocol is used to acquire a Fibre Channel ID, and the address is used for all FCoE communications in the same way as Fibre Channel Protocol.

Answer: B

Explanation:

https://www.cisco.com/c/en/us/td/docs/solutions/Enterprise/Data_Center/UF_FCoE_final.html#wp1154912

NEW QUESTION 8

Which two configuration settings are available in the Cisco UCS Firmware Auto Sync Server policy? (Choose two.)

- A. Immediate Action
- B. User Acknowledge
- C. No Action
- D. Delayed Action

E. User Notification

Answer: BC

NEW QUESTION 9

Where does the witness VM reside in a Cisco Hyperflex Edge deployment?

- A. Windows application
- B. Hyper Rex Data Platform
- C. Cisco Intersight
- D. local HyperFlex datastore

Answer: C

NEW QUESTION 10

A network engineer must SPAN only the ingress traffic of a Cisco MDS 9000 series switch from interface fc 1/23 to interface fc 1/24. Which two configuration must be applied to complete this task? (Choose two)



- A. Option A
- B. Option B
- C. Option C
- D. Option D

Answer: AC

NEW QUESTION 10

A storage administrator notices an increasing number of storage targets that unexpectedly reach capacity, causing periodic service interruptions. The administrator must now create and submit a daily report of the environment that shows the status of the storage targets with the highest capacities. Which solution provides this information?

- A. Nagios Core with OpManager
- B. Cisco DCNM with SAN Insight
- C. SolarWinds with Slow Drain Analysis
- D. Cisco Intersight with Slow Drain Analysis

Answer: D

NEW QUESTION 12

Which component is upgraded by using an EPLD upgrade on a Cisco Nexus 9000 Series Switch?

- A. dual-homed fabric extenders
- B. BIOS
- C. field-programmable gate arrays
- D. ISSU of the NX-OS version

Answer: C

NEW QUESTION 13

What is required for using puppet in a Cisco NX-OS environment?

- A. Open Agent Container
- B. XML management interface
- C. NX-API

D. OpenNP

Answer: A

NEW QUESTION 14

A network engineer plans to upgrade the firmware of a Cisco UCS B-Series chassis by using the Auto Install feature. Which component is upgraded during the infrastructure firmware upgrade stage?

- A. Cisco IMC
- B. Adapter
- C. I/O module
- D. BIOS

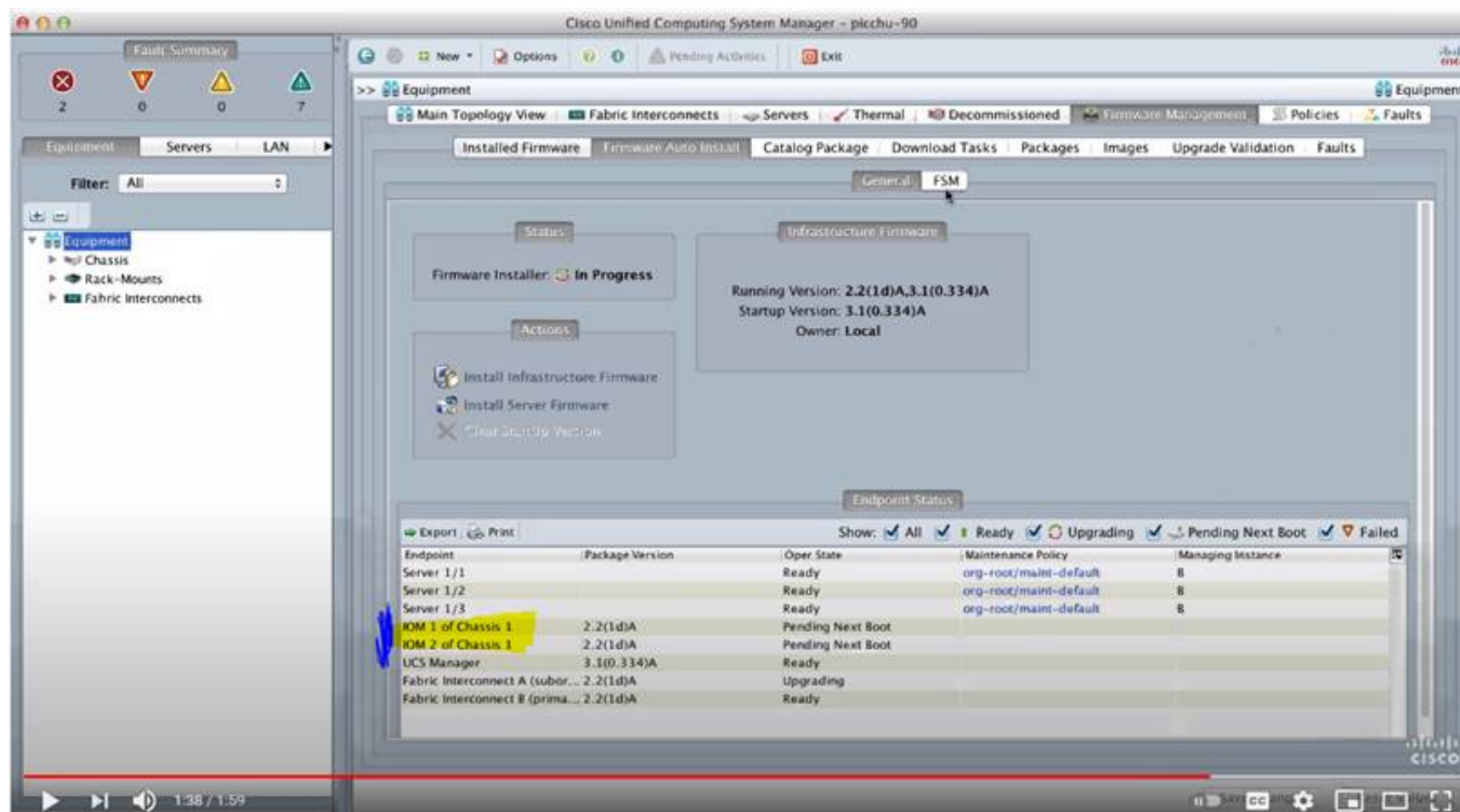
Answer: C

Explanation:

https://www.cisco.com/c/en/us/td/docs/unified_computing/ucs/ucs-manager/GUI-User-Guides/Firmware-Mgmt/ <https://www.youtube.com/watch?v=g-4OgYigvRI>

Direct Upgrade After Auto Install

During Auto Install, the startup version of the default infrastructure pack is configured. To **successfully complete a direct upgrade or activation of Cisco UCS Manager, Fabric Interconnects, and IOMs after Auto Install**, ensure that the startup version is cleared before starting direct upgrade or activation. If the startup version of the default infrastructure pack is configured, you cannot directly upgrade or activate Cisco UCS Manager, Fabric Interconnects, and IOMs. , provides detailed steps for clearing the startup version.



NEW QUESTION 16

Which two protocols are used by the NFSv4 protocol? (Choose two.)

- A. FCP
- B. TCP
- C. UDP
- D. Ethernet
- E. IP

Answer: BE

NEW QUESTION 19

Which data structure results from running this Python code?

```
>>> import json
>>> f = open('fname.json', 'r')
>>> var1 = json.load(f)
>>> var1
{'bd': 'bd1', 'ap': {'epgs': [{'name': 'app'}, {'name': 'web'}, {'name': 'db'}]}, 'name': 'OnlineStore', 'name': '39233259', 'pvn': 'pvn1'}
```

- A. tuple
- B. dictionary
- C. set
- D. list

Answer: B

NEW QUESTION 21

After a Cisco Nexus 7000 Series Switch chassis replacement, the administrator discovers that all vPC-enabled LACP port channels are reinitialized. The administrator wants to prevent this issue the next time the chassis is replaced. Which two actions must be taken to meet this requirement before the isolated device is reloaded? (Choose two)

- A. Set the vPC MAC address to a lower value than the peer
- B. Change the vPC system-priority of the replacement chassis to a higher value than the peer if.
- C. Change the vPC system-priority of the replacement chassis to a lower value than the peer.
- D. Set the vPC MAC address to a higher value than the peer
- E. Configure auto-recovery to the disable state on both peers

Answer: BE

Explanation:

https://www.cisco.com/c/en/us/td/docs/switches/datacenter/nexus9000/sw/6-x/interfaces/configuration/guide/b_

<https://community.cisco.com/t5/networking-documents/vpc-auto-recovery-feature-in-nexus-7000/ta-p/3123651>

vPC and LACP

The Link Aggregation Control Protocol (LACP) uses the system MAC address of the vPC domain to form the LACP Aggregation Group (LAG) ID for the vPC.

You can use LACP on all the vPC EtherChannels, including those channels from the downstream switch. We recommend that you configure LACP with active mode on the interfaces on each EtherChannel on the vPC peer switches. This configuration allows you to more easily detect compatibility between switches, unidirectional links, and multihop connections, and provides dynamic reaction to run-time changes and link failures.

The vPC peer link supports 16 EtherChannel LACP interfaces. You should manually configure the system priority on the vPC peer-link switches to ensure that the vPC peer-link switches have a **higher LACP priority** than the downstream connected switches. A **lower numerical value system priority means a higher LACP priority**.

NEW QUESTION 22

A customer data center is configured for distribution of user roles, call home, and NTP. The data center was split into two geographically separate locations called DC1 and DC2. The requirement is for the user role configurations to be distributed in DC1 and for NTP and call home features to be constrained to DC2. Which two configuration sets must be used to meet these requirements? (Choose two.)

- A.

```
! On Data Center 1
configure terminal
cfs 1
roles
aaa
```
- B.

```
! On Data Center 1
configure terminal
cfs region 1
ntp
callhome
```
- C.

```
! On Data Center 1
configure terminal
cfs 1
ntp
callhome
```
- D.

```
! On Data Center 2
configure terminal
cfs region 2
roles
```
- E.

```
! On Data Center 2
configure terminal
cfs 2
roles
aaa
```


- A. Option A
- B. Option B
- C. Option C
- D. Option D
- E. Option E

Answer: CD

Explanation:

This example shows how to move the Call Home application to CFS region 2:

```
switch# config t

switch(config)# cfs region 2

switch(config-cfs-region)# callhome

switch(config-cfs-region)# show cfs region name callhome
```

https://www.cisco.com/c/en/us/td/docs/switches/datacenter/sw/4_2/nx-os/system_management/configuration/guide/sm_nx_os_cli/sm_2cfs.html

NEW QUESTION 24

Which two actions must be taken to directly connect a Fibre Channel storage array to a Cisco UCS domain? (Choose two.)

- A. Configure a new VSAN
- B. Create a new vHBA dedicated to the storage array
- C. Configure a Fibre Channel port channel
- D. Create a Storage Connection Policy
- E. Configure the Fibre Channel poet as a Fibre Channel storage port

Answer: AE

NEW QUESTION 29

Due to a newly announced security advisory, a company has been Informed that they must update the configuration of 500 network devices that ate deployed n their network. The engineering team must assist the operations team to prepare for this update. The operations team does not have direct access to the network devices and must log in via a Linux server. This Is the first time that the team is making a network-wide configuration and must change all devices without first installing additional software on the network devices. The operations team is unfamiliar with automation and scripting technologies. Which automation tool must be used to accomplish this goal?

- A. Chef
- B. Ansible
- C. Puppet
- D. Saltstack

Answer: B

NEW QUESTION 34

What is a benefit of Cisco HyperFlex All-Flash Stretched cluster deployment as compared to All-HDD Stretched cluster deployment?

- A. lower cost
- B. lower number of IOPS
- C. higher cost
- D. higher number of IOPS

Answer: D

NEW QUESTION 39

An engineer is configuring AAA authentication on an MDS 9000 switch. The LDAP server is located under the IP 10.10.2.2. The data sent to the LDAP server should be encrypted. Which command should be used to meet these requirements?

- A. ldap-server host 10.10.2.2 enable-ssl
- B. ldap-server 10.10.2.2 port 443
- C. ldap server host 10.10.2.2 key SSL_KEY
- D. ldap-server 10.10.2.2 key SSL_KEY

Answer: A

NEW QUESTION 42

An engineer mus! send JSON encoded telemetry data to an external collector. The transport mechanism must prevent tampenng or forgery of the data. Which protocol accomplishes this goal?

- A. GPB
- B. HTTP
- C. gRPC
- D. DTLS

Answer: B

NEW QUESTION 47

An engineer upgrades the bash on the Cisco Nexus 9000 Series Switch.

```
guestshell:~$ sudo [MISSING_COMMAND] /bootflash/bash-4.2_8642092948678a-r8x86_64.rpm.rpm
Preparing...
##### [100%]
1:bash ##### [100%]
update-alternatives: Linking //bin/sh to /bin/bash
```

Which command must be used to complete the task?

- A. rpm -qa
- B. rpm -Uhv
- C. upgrade -U
- D. update -vh

Answer: B

NEW QUESTION 48

A Cisco MDS 9000 Series Switch is configured for SAN Analytics and SAN Telemetry Streaming. An engineer must enable analytics for NVMe on interfaces in the range of fc1/1-12. Due to a large amount of traffic generated in the SAN environment, the data must be collected at regular intervals of 60 seconds from ports fc1/1-12 and then for ports fc13-24 for the next 60 seconds. Ports in the range fc4/13-14 were already enabled for analytics. Which set of commands must be used to meet these requirements?

- ☒ interface fc1/1-12
port-sampling module 4 size 12 interval 60
analytics nvme
- ☐ interface fc1/1-12
port-sampling module 4 size 12 interval 60000
analytics type fc-scsi
- ☐ analytics port-sampling module 4 size 12 interval 60000
- ☐ interface fc1/1-12
analytics fc-scsi
analytics fc-nvme
- ☐ analytics port-sampling module 4 size 12 interval 60
- ☐ interface fc1/1-12
analytics type fc-nvme

- A. Option A
- B. Option B
- C. Option C
- D. Option D

Answer: D

NEW QUESTION 50

Where is the witness deployed in a two-node Cisco HyperFlex Edge deployment?

- A. to the HyperFlex Edge two-node cluster
- B. to an additional server with network access to HyperFlex Edge
- C. to a third-party cloud provider
- D. to Cisco Intersight

Answer: D

Explanation:

The Cisco HyperFlex Edge invisible cloud witness is only required for 2-node HX Edge deployments. correct, it has to connect to Intersight as it is a CLOUD invisible witness as per the document shared: The Cisco HyperFlexEdge invisiblecloud witness is only required for 2-node HX Edge deployments. The witness does not require any additional infrastructure, setup, configuration, backup, patching, or management of any kind. This feature is automatically configured as part of a 2-node Hyper Flex Edge installation. Outbound access at the remote site must be present for connectivity to Intersight (either Intersight.com or to the Intersight Virtual Appliance). HyperFlexEdge 2-node clusters cannot operate without this connectivity in place
https://www.cisco.com/c/en/us/td/docs/hyperconverged_systems/HyperFlex_HX_DataPlatformSoftware/Edge_Deployment_Guide/b_HyperFlex_Edge_Deployment_Guide_4_0.pdf

NEW QUESTION 54

When deploying a Cisco HyperFlex edge with a pair of switches, what is the minimum number of interfaces in trunk mode required on each HX node?

- A. 1
- B. 2
- C. 4
- D. 6

Answer: B

NEW QUESTION 57

Refer to the exhibit.

```
switch(config)# interface Ethernet 2/2
switch(config)# ip address 172.23.231.240/23
switch(config)# ip verify unicast source reachable-via rx
```

What is configured as a result of running these commands?

- A. reverse lookup for outbound packets
- B. strict unicast RPF
- C. loose unicast RPF
- D. IP Source Guard

Answer: B

Explanation:

https://tools.cisco.com/security/center/resources/unicast_reverse_path_forwarding

The ip verify unicast source reachable-via rx command enables Unicast RPF in strict mode. To enable loose mode, administrators can use the any option to enforce the requirement that the source IP address for a packet must appear in the routing table.

NEW QUESTION 58

Refer to the exhibit.

```
CISCO-UCS-A# scope org /
CISCO-UCS-A /org* # create service-profile Cisc01 instance
CISCO-UCS-A /org/service-profile* # set bios-policy bios1
CISCO-UCS-A /org/service-profile* # set boot-policy boot1
CISCO-UCS-A /org/service-profile* # set ext-mgmt-ip-state none
CISCO-UCS-A /org/service-profile* # set host-fw-policy ipmi-user987
CISCO-UCS-A /org/service-profile* # set identity dynamic-uuid derived
CISCO-UCS-A /org/service-profile* # set ipmi-access-profile ipmi1
CISCO-UCS-A /org/service-profile* # set local-disk-policy local1
CISCO-UCS-A /org/service-profile* # set maint-policy maint1
CISCO-UCS-A /org/service-profile* # set mgmt-fw-policy mgmt1
CISCO-UCS-A /org/service-profile* # set power-control-policy power1
CISCO-UCS-A /org/service-profile* # set scrub-policy scrub1
CISCO-UCS-A /org/service-profile* # set sol-policy sol1
CISCO-UCS-A /org/service-profile* # set stats-policy stats1
CISCO-UCS-A /org/service-profile* # set user-label Cisco
CISCO-UCS-A /org/service-profile* # vcon-policy vconnpolicy
CISCO-UCS-A /org/service-profile* # commit-buffer
CISCO-UCS-A /org/service-profile #
```

What is a characteristic presented in the service profile of the UUID?

- A. based on the hardware
- B. vendor assigned
- C. unique system generated
- D. allocated from a UUID pool

Answer: A

Explanation:

there is no parameter for 'set identity dynamic-uuid' to specify a pool name - you can only state "derived" or a 32 hex character string (128-bits, therefore full UUID).

ucspe /org/service-profile # set identity dynamic-uuid derived Derived

FFFFFFFF-FFFF-FFFF-FFFF-FFFFFFFFFFFFFF Dynamic UUID

The documentation, as usual for Cisco, is poor. Shagua references old v1.4.1 documentation but it's the same in 4.1. It's inaccurate as uuid-pool should now read uuid-suffix-pool. You can use UCSPE to check the CLI with contextual help.

ucspe /org/service-profile # set identity dynamic-uuid Dynamic UUID dynamic-wwnn Dynamic WWNN uuid-suffix-pool UUID Suffix Pool wwnn-pool WWNN Pool

If set identity dynamic-uuid only gives us the option of a static UUID or the parameter "derived", and set identity uuid-suffix-pool is the option to assign a pool... I would suggest that the most logical answer here is

- derived from the hardware. https://www.cisco.com/en/US/docs/unified_computing/ucs/sw/cli/config/guide/1.4.1/CLI_Config_Guide_1_4_1

NEW QUESTION 63

Multiple roles are applied to a user on the Cisco MDS 9000 Series Switch. Which statement is true?

- A. Any commands that have conflicting settings between roles are denied.
- B. Access to a command takes priority over being denied access to a command.
- C. The first role assigned takes precedence over subsequent roles.
- D. The last role assigned takes precedence over previous roles.

Answer: B

Explanation:

Graphical user interface, text, application Description automatically generated



Note If you belong to **multiple roles**, you can execute a union of all the commands permitted by these roles. Access to a command takes priority over being **denied access** to a command. For example, suppose you belong to a TechDocs group and you were denied access to configuration commands. However, you also belong to the engineering group and have access to configuration commands. In this case, you will have access to configuration commands.

https://www.cisco.com/c/en/us/td/docs/switches/datacenter/mds9000/sw/5_0/configuration/guides/sec/nxos/sec/clicfgur.html

https://www.cisco.com/c/en/us/td/docs/switches/datacenter/mds9000/sw/8_x/config/security/cisco_mds9000_security_config_guide_8x/configuring_users_and_common_roles.html

NEW QUESTION 67

What is an advantage of streaming telemetry over SNMP?

- A. on-change traps sent to a receiver
- B. periodic push-based subscription messages
- C. periodic polling of the device status
- D. MD5-based authentication on polling

Answer: B

NEW QUESTION 68

What is an advantage of NAS compared to SAN?

- A. It offers enhanced NFS features.
- B. It offers enhanced security features
- C. It functions in an existing IP environment.
- D. It provides lossless throughput.

Answer: C

NEW QUESTION 69

An engineer must build a lab replica of a Cisco UCS production environment. The file must be imported into a new Cisco UCS cluster using a Cisco UCS manager GUI. The file must be in XML format and be exported from Cisco UCS Manager using encrypted method. Which two configuration parameters should be selected to meet these requirements?. (Choose two.)

- A. Type: Logical configuration
- B. Protocol SCP
- C. Type Full state
- D. Protocol TFTP
- E. Type All configuration

Answer: BE

NEW QUESTION 71

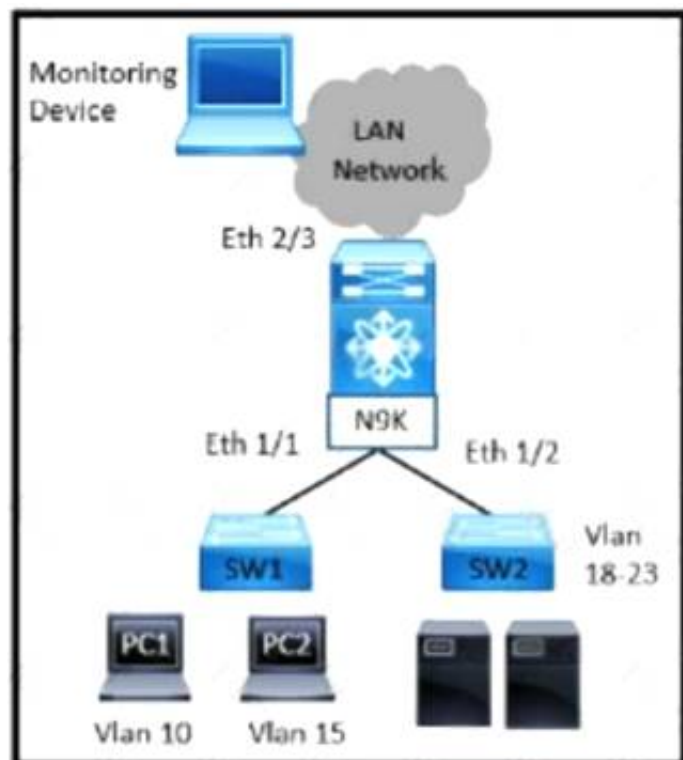
An engineer must perform a backup operation of the Cisco UCS system. The backup must be transferred to a secure location using UDP and must contain information about VLANs, VSANs, and other policies. Also, the operations team requires the backup file to be in a human-readable format. Which configuration set meets these requirements?

- A. Type: System configuration Protocol: SCP
- B. Type: Logical configuration Protocol: TFTP
- C. Type: All configuration Protocol: FTP
- D. Type: Full state Protocol: SFTP

Answer: B

NEW QUESTION 73

Refer to the exhibit



A network administrator experiences these issues with the network:

- PC1 is experiencing a buffering problem for video applications
- The servers that are connected to SW2 are experiencing packet drops when they connect to the Internet

The engineer wants to configure the required traffic capture to investigate the issue further Which configuration must be implemented to monitor the traffic?

- ☐ N9K(config)# monitor session 5 rx
N9K(config)# monitor session 5 tx
N9K(config-monitor)# description Span_session_5
N9K(config-monitor)# source interface ethernet 1/1
N9K(config-monitor)# source interface ethernet 1/2
N9K(config-monitor)# destination interface ethernet 2/3
- ☐ N9K(config)# monitor session 5 tx
N9K(config-monitor)# description Span_session_5
N9K(config-monitor)# source interface ethernet 1/1
N9K(config-monitor)# source interface ethernet 1/2
N9K(config-monitor)# destination interface ethernet 2/3
- ☐ N9K(config)# monitor session 5 tx
N9K(config-monitor)# description Span_session_5
N9K(config-monitor)# source vlan 10-15 rx
N9K(config-monitor)# source interface ethernet 1/2
N9K(config-monitor)# destination interface ethernet 2/3
- ☒ N9K(config)# monitor session 5 rx
N9K(config-monitor)# description Span_session_5
N9K(config-monitor)# source vlan 10 rx
N9K(config-monitor)# source interface ethernet 1/2
N9K(config-monitor)# destination interface ethernet 2/3

- A. Option A
- B. Option B
- C. Option C
- D. Option D

Answer: D

NEW QUESTION 78

Which two statements describe the process of upgrading an EPLD on a Cisco MUS 9000 Series Switch? (Choose two)

- A. EPLDs are capable to be upgraded without replacing the hardware
- B. The CPLDs for all the modules on a switch must be upgraded at the same time
- C. An upgrade verification identifies the impact of each EPLD upgrade
- D. EPLDs are only capable to be upgraded to the latest F
- E. D image
- F. EPLD upgrades are capable to be completed without powering down the module during the upgrade

Answer: AC

NEW QUESTION 81

An engineer must add a new VRF (DC DC) to the network that runs with Multiprotocol Border Gateway Protocol (MP-BGP) and EVPN. The requirement for the new VRF is to allow communication of network prefixes between PE1 and PE2. Which two sets of steps should be taken to complete the VRF configuration? (Choose two)



- A. Option A
- B. Option B
- C. Option C
- D. Option D
- E. Option E

Answer: DE

NEW QUESTION 86

Which two features are used to allow a nondisruptive upgrade for the ISSU process? (Choose two.)

- A. connectivity management processor
- B. nonstop forwarding
- C. graceful restart
- D. stateful switchover
- E. advanced services license

Answer: BD

NEW QUESTION 89

Which two firmware packages are included in the Cisco UCS C-Series Rack-Mount UCS-Managed Server Software bundle? (Choose two.)

- A. system
- B. third-party
- C. PSU
- D. CIMC
- E. BIOS

Answer: DE

Explanation:

https://www.cisco.com/c/en/us/td/docs/unified_computing/ucs/ucs-manager/GUI-User-Guides/Firmware-Mgmt/

Cisco UCS C-Series Rack-Mount UCS-Managed Server Software Bundle

This bundle includes the following firmware images that are required to update components on rack-mount servers that have been integrated with and are managed by Cisco UCS Manager:

- CIMC firmware
- BIOS firmware
- Adapter firmware
- Storage controller firmware

NEW QUESTION 93

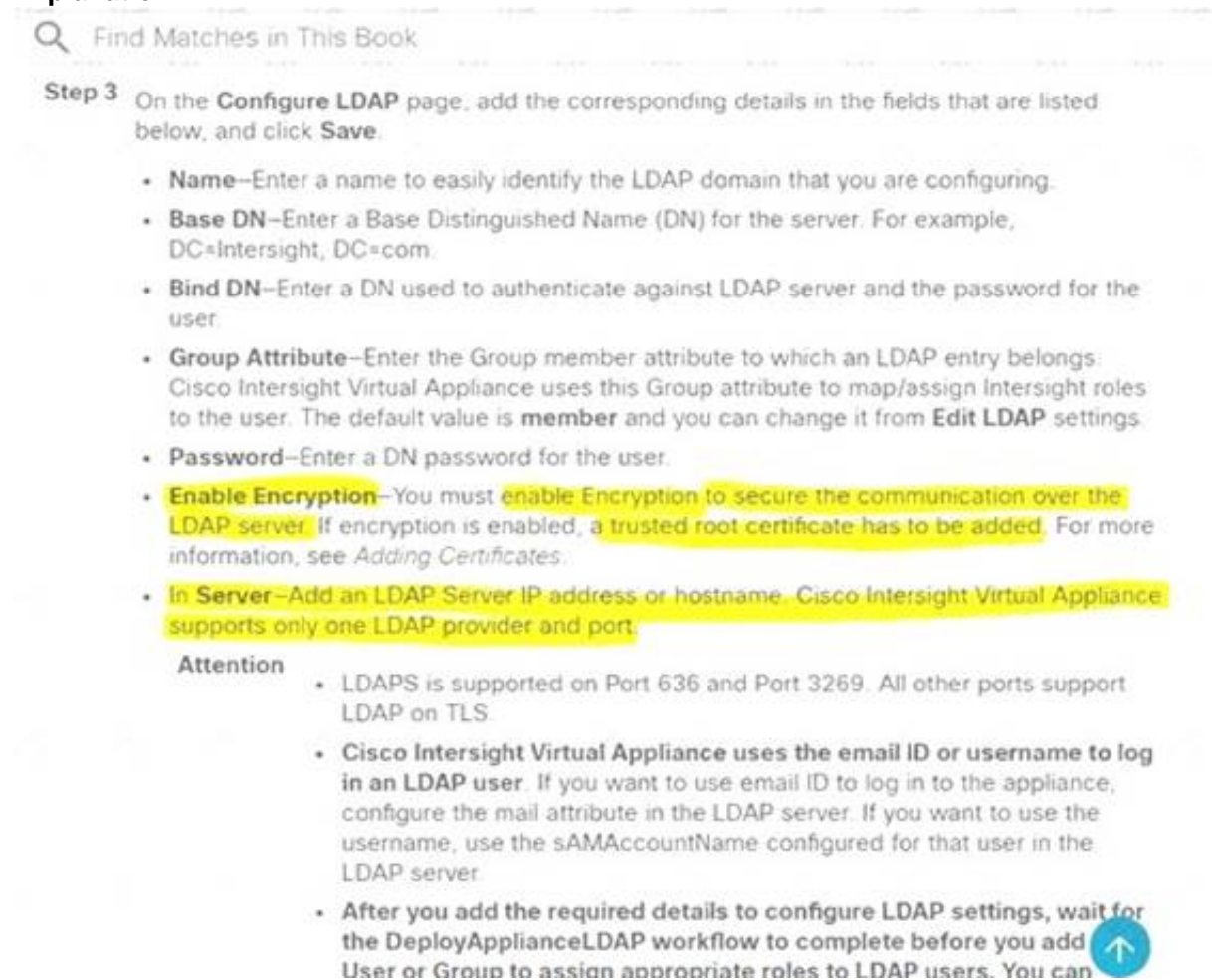
An engineer is implementing Cisco Intersight in a secure environment. The environment must use LDAP directory service and ensure information integrity and

confidentiality. Which two steps must be taken to implement the solution? (Choose two.)

- A. Enable Encryption for LDAP
- B. Add a self-signed LDAP certificate to Cisco Intersight.
- C. Enable Certificate Signing Request in Cisco Intersight.
- D. Add a trusted root LDAP certificate to Cisco Intersight
- E. Add a trusted OAuth token to Cisco Intersight

Answer: AD

Explanation:



The screenshot shows a search bar at the top with the text "Find Matches in This Book". Below it, a section titled "Step 3" contains the instruction: "On the **Configure LDAP** page, add the corresponding details in the fields that are listed below, and click **Save**." This is followed by a bulleted list of configuration steps:

- **Name**—Enter a name to easily identify the LDAP domain that you are configuring.
- **Base DN**—Enter a Base Distinguished Name (DN) for the server. For example, DC=Intersight, DC=com.
- **Bind DN**—Enter a DN used to authenticate against LDAP server and the password for the user.
- **Group Attribute**—Enter the Group member attribute to which an LDAP entry belongs: Cisco Intersight Virtual Appliance uses this Group attribute to map/assign Intersight roles to the user. The default value is **member** and you can change it from **Edit LDAP** settings.
- **Password**—Enter a DN password for the user.
- **Enable Encryption**—You must **enable Encryption to secure the communication over the LDAP server**. If encryption is enabled, **a trusted root certificate has to be added**. For more information, see *Adding Certificates*.
- **In Server**—Add an LDAP Server IP address or hostname. **Cisco Intersight Virtual Appliance supports only one LDAP provider and port.**

Below the list is an "Attention" section with three additional points:

- LDAPS is supported on Port 636 and Port 3269. All other ports support LDAP on TLS.
- **Cisco Intersight Virtual Appliance uses the email ID or username to log in an LDAP user.** If you want to use email ID to log in to the appliance, configure the mail attribute in the LDAP server. If you want to use the username, use the sAMAccountName configured for that user in the LDAP server.
- **After you add the required details to configure LDAP settings, wait for the DeployApplianceLDAP workflow to complete before you add User or Group to assign appropriate roles to LDAP users.** You can

https://www.cisco.com/c/en/us/td/docs/unified_computing/Intersight/b_Cisco_Intersight_Appliance_Getting_Started_Guide/b_Cisco_Intersight_Appliance_Install_and_Upgrade_Guide_chapter_0110.html

NEW QUESTION 95

The FCoE technology is used in a data center and the MDS switches are configured as Fibre Channel Forwarders. What configuration should be applied to an MDS switch in order to be used as the best switch to connect by the CNAs in the fabric?

- A. fcoe fcf-priority 1024
- B. fcoe fcf-priority 512
- C. fcoe fcf-priority 0
- D. no fcoe fcf-priority

Answer: C

Explanation:

https://www.cisco.com/c/en/us/td/docs/switches/datacenter/nexus5000/sw/fcoe/521n11/b_5k_FCoE_Config_52 b_5k_FCoE_Config_521N11_chapter_011.pdf

NEW QUESTION 98

A customer requires a solution to orchestrate the configuration of storage arrays, firewalls, and Cisco ACI networking. Additionally, the orchestration product must support open automation and a service catalog. Which solution meets these requirements?

- A. Cisco UCS Director
- B. Cisco Intersight
- C. Cisco Data Center Network Manager
- D. Cisco Workload Optimization Manager

Answer: C

NEW QUESTION 102

The EPLD update of the supervisor module has been scheduled for several cisco MDS 9000 switches. What will be the impact of the update?

- A. All control plane traffic is stopped for the duration of the EPLD update and the switch remain operational for the duration of the upgrade.
- B. The redundant supervisor takes over while the EPLD update is in progress and there is no service disruption.
- C. All traffic is stopped for the duration of the EPLD update and the switch is rebooted after the upgrade is completed.
- D. The redundant supervisor takes over while the EPLD update is in progress and the switch is rebooted after the upgrade is completed.

Answer: C

Explanation:

An EPLD update of the supervisor module of fabric switches (Cisco MDS 9100, Cisco MDS 9200, and Cisco MDS 9300 Series switches) is disruptive since there is

no redundant supervisor to take over while the update is in progress. All traffic through the system is stopped for the duration of the update and the switch is rebooted after the upgrade has completed. The update may take up to 30 minutes to complete.
https://www.cisco.com/c/en/us/td/docs/switches/datacenter/mds9000/sw/6_2/release/notes/epld/epld_rn.html#pg

NEW QUESTION 105

Refer to the exhibit

```
switch1#show run interface Vlan 10

interface Vlan10
  description Service Datacenter-Rack-A
  ip address 209.165.200.225 255.255.255.224
!
end

switch1#
```

An engineer must mirror the traffic on a switch. The engineer locates the server port that requires monitoring on switch1, but the packet sniffer is on switch2. The engineer must configure the source IP address on switch1. Which command accomplishes this goal?

- A. monitor session 10 type erspan-source
- B. monitor erspan origin ip-address 209.165.200.225
- C. source ip 209.165.200.225
- D. source interface vbn512

Answer: B

NEW QUESTION 108

An engineer performs a Firmware Auto Install upgrade through the Cisco UCS Manager. Which two Cisco UCS components are upgraded in the Install Server Firmware stage? (Choose two)

- A. Cisco UCS C-Series Rack-Mount Server
- B. I/O Modules
- C. Cisco UCS Manager
- D. Cisco UCS B-Series Blade Server
- E. Fabric Interconnects

Answer: BE

NEW QUESTION 113

Drag and drop the mechanisms to collect data from a network from the left onto their characteristics on the right.

CLI-based scripts	Polling can take 5-10 minutes.
SNMP	Unstructured and susceptible to change and scripts failure.
syslog	It sends data from the device to a specific endpoint, for instance, JSON or by using Google protocol buffers.
telemetry	It pushes messages in the format "seq no:timestamp: %facility-severity MNEMONIC:description" and has limits in scale and efficiency.

- A. Mastered
- B. Not Mastered

Answer: A

Explanation:

Table Description automatically generated with low confidence

NEW QUESTION 117

A DNS server with IP address 192.168.1.1 is deployed in a data center. A network engineer must configure a Cisco UCS Fabric Interconnect to use this DNS. Which configuration should be applied?

- ☐ **fiel-mgmt-A# scope system**
fiel-mgmt-A /system # create dns 192.168.1.1
fiel-mgmt-A /system* # commit-buffer
- ☐ **fiel-mgmt-A# scope fabric-interconnect a**
fiel-mgmt-A /fabric-interconnect # set name 192.168.1.1
fiel-mgmt-A /fabric-interconnect # scope system
fiel-mgmt-A /system # commit-buffer
- ☐ **fiel-mgmt-A# scope fabric-interconnect a**
fiel-mgmt-A /fabric-interconnect # set name 192.168.1.1
fiel-mgmt-A /fabric-interconnect* # commit-buffer
- ☒ **fiel-mgmt-A# scope system**
fiel-mgmt-A /system # scope services
fiel-mgmt-A /system/services # create dns 192.168.1.1
fiel-mgmt-A /system/services* # commit-buffer

- A. Option A
- B. Option B
- C. Option C
- D. Option D

Answer: D

NEW QUESTION 120

An engineer configures the properties of a cisco UCS cisco integrated Management controller network adapter for a standalone cisco C-Series server. The Fallback Timeout in the vNIC was set to 600. When the failure occurs. The secondary must be used and then fallback when the primary interface becomes available again. Which action be taken to meet these requirements?

- A. Set default VLAN on the adapters.
- B. Increase Cos to 6.
- C. Disable VNTAG mode.
- D. Enable Uplink failover.

Answer: D

Explanation:

Enable Uplink Failover check box - Check this box if traffic on this vNIC should fail over to the secondary interface if there are communication problems. VNTAG mode is required for this option.

Fallback timeout field - After a vNIC has started using its secondary interface, this setting controls how long the primary interface must be available before the system resumes using the primary interface for the vNIC. Enter a number of seconds between 0 and 600. VNTAG mode is required for this option.

https://www.cisco.com/en/US/docs/unified_computing/ucs/c/sw/gui/config/guide/1.5/b_Cisco_UCS_C-series_G

NEW QUESTION 124

A network engineer must create an EEM script that saves a copy of the running configuration on bootflash and writes a message to syslog when a user saves the configuration to a Cisco Nexus switch. Which configuration set should be applied to complete this task?

- ☐ **event manager applet local- backup**
event cli match "copy running-config startup-config"
action 1 cli copy running-config bootflash:/current_config.txt
action 2 syslog msg Configuration saved and copied to bootflash
- ☐ **event manager applet local- backup**
event cli match "write memory"
action 1 cli copy running-config bootflash:/current_config.txt
action 2 snmp-trap strdata "Configuration saved and copied to bootflash"
- ☐ **event manager applet local- backup**
event cli match "copy running-config startup-config"
action 1 cli copy running-config bootflash:/current_config.txt
action 2 syslog msg Configuration saved and copied to bootflash
action 3 event-default
- ☒ **event manager applet local- backup**
event cli match "write memory"
action 1 cli copy running-config bootflash:/current_config.txt
action 2 syslog msg Configuration saved and copied to bootflash
action 3 event-default

- A. Option A
- B. Option B
- C. Option C
- D. Option D

Answer: C

Explanation:

The command write memory is not valid in NX-OS
 The "event-default"

If you want to allow the triggered event to process any default actions, you must configure the EEM policy to allow the default action. For example, if you match a CLI command in a match statement, you must add the event-default action statement to the EEM policy or EEM will not allow the CLI command to execute.

NEW QUESTION 126

Refer to the exhibit.

```
OTV-Site1# show otv
OTV Overlay Information
Site Identifier 0000.0000.0111
Overlay interface Overlay200
VPN name: Overlay200
VPN state: UP
Extended vlans: 178 2500-2563 (Total:65)
Join interface(s): Eth1/2 (20.1.1.1)
Site vlan: 1999 (up)
AED-Capable: Yes
Capability: Unicast-Only
Is Adjacency Server: Yes
Adjacency Server(s): 20.1.1.1/20.2.1.1
```

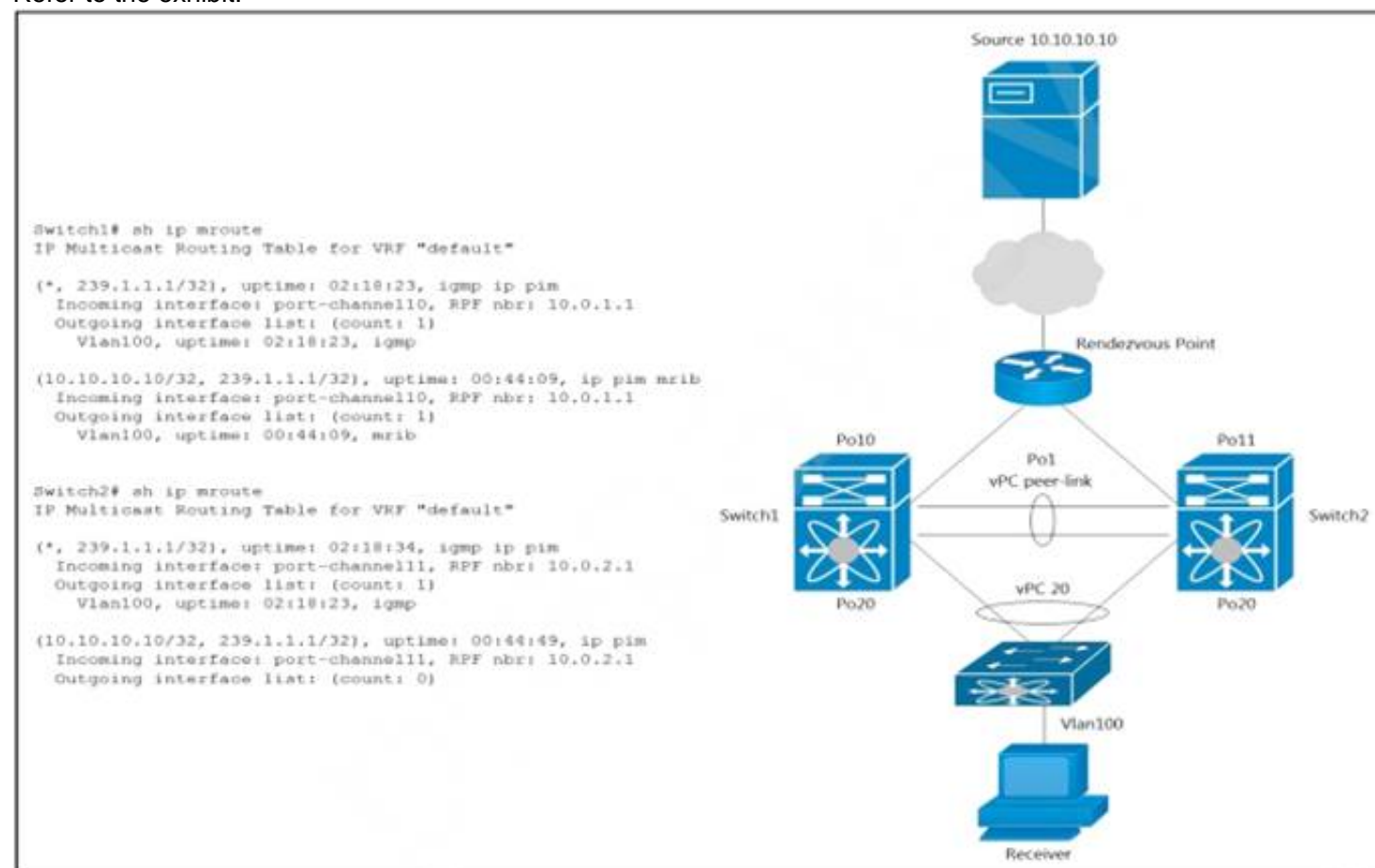
A network engineer is setting up a multihomed OTV network. The first site has been set up with a primary and secondary adjacency server. Which configuration must be added on the remote OTV AEDs site?

- A. interface Overlay200otv join-interface Ethernet1/2 otv extend-vlan 178, 2500-2563otv use-adjacency-server 20.1.1.1 unicast-only
- B. interface Overlay200otv join-interface Ethernet1/2 otv extand-vlan 178, 2500-2563otv adjacency-server unicast-only
- C. interface Overlay200otv join-interface Ethernet1/2 otv extend-vlan 178, 2500-2563
- D. interface Overlay200otv join-interface Ethernet1/2 otv extend-vlan 178, 2500-2563otv use-adjacency-server 20.1.1.1 20.2.1.1 unicast-only

Answer: D

NEW QUESTION 129

Refer to the exhibit.



A host with a source address 10.10.10.10 sends traffic to multicast group 239.1.1.1. How do the vPC switches forward the multicast traffic?

- A. If multicast traffic is received on Switch1 over the vPC peer-link, the traffic is dropped
- B. If multicast traffic is received on Po10 Switch1, the traffic is forwarded out on Po1 and Po20
- C. If multicast traffic is received on Po11 Switch2, the traffic is forwarded out only on Po20

D. If multicast traffic is received on Po11 Switch2, the traffic is dropped.

Answer: D

Explanation:

<https://www.cisco.com/c/en/us/support/docs/ip/multicast/214140-multicast-forwarding-in-vpc-based-on-loc.htm>

NEW QUESTION 130

Refer to the exhibit.

```
N7K-1
spanning-tree vlan 1-10 priority 8192

vpc domain 100
  role priority 100
  peer-keepalive destination 10.1.1.2 source 10.1.1.1
vrf default
  delay restore 60
  peer-switch
  auto-recovery
  ip arp synchronize

N7K-2
spanning-tree vlan 1-10 priority 8192

vpc domain 100
  role priority 200
  peer-keepalive destination 10.1.1.1 source 10.1.1.2
vrf default
  delay restore 60
  peer-switch
  auto-recovery
  ip arp synchronize
```

The STP priority of N7K-1 and N7K-2 are the lowest in the network. Which statement describes STP on the vPC?

- A. N7K-1 appears as the STP root.
- B. N7K-2 appears as the STP root.
- C. N7K-1 and N7K-2 appear as a single STP root.
- D. N7K-1 preempts N7K-2 as the STP root.

Answer: C

NEW QUESTION 135

An engineer requires a solution to automate the configuration and deployment of remote network devices for a customer. The engineer must keep these considerations in mind:

- The customer's environment is based on industry-accepted standards and requires a solution that meets these standards.
- The security requirements mandate the use of a secure transport mechanism between the automation software and target devices such as SSH or TLS.
- The solution must be based on a human-readable and easy to parse format such as XML or JSON. Which solution must be used to meet these requirements?

- A. SNMP
- B. REST API
- C. Ansible
- D. NETCONF

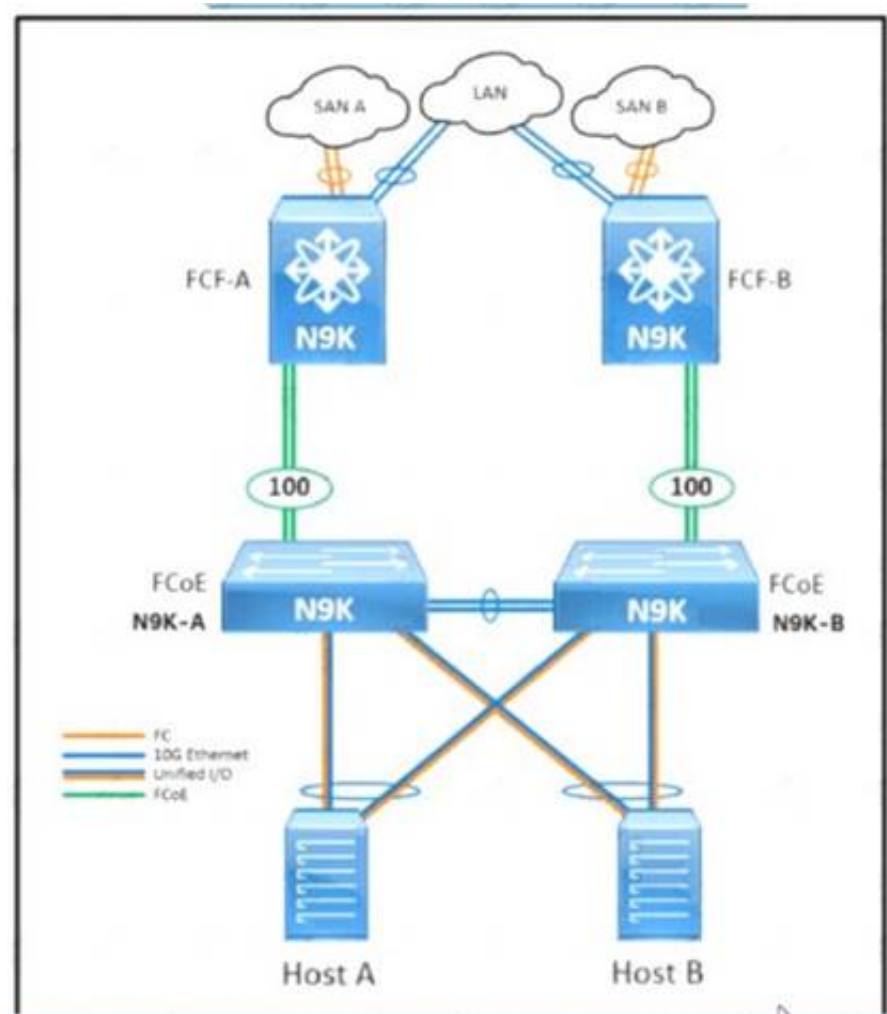
Answer: D

Explanation:

<https://www.cisco.com/c/en/us/products/collateral/ios-nx-os-software/ios-xe/nb-06-cisco-ios-xe-faq-en.html>

NEW QUESTION 138

Refer to the exhibit.



An engineer must configure FCoE between the N9K-A switch and the FCF-A Nexus 9000 core switch. The deployment has these characteristics:

- The N9K-A and N9K-B top-of-rack switches share the domain ID of the core switches.
- The hosts are equipped with converged network adapters.
- The only VSAN that is permitted to traverse port-channel 100 is VSAN 20. Which configuration completes the FCoE configuration on the N9K-A device?

- ☐ N9K-A(config)# feature fcoe
N9K-A(config)# feature npv
N9K-A(config)# interface vfc 100
N9K-A(config-if)# bind interface port-channel 100
N9K-A(config-if)# switchport mode F
N9K-A(config-if)# switchport trunk allowed vsan 20
- ☐ N9K-A(config)# feature fcoe
N9K-A(config)# feature npv
N9K-A(config)# interface vfc 100
N9K-A(config-if)# bind interface port-channel 100
N9K-A(config-if)# switchport mode N
N9K-A(config-if)# switchport trunk allowed vsan 1, 20
- ☐ N9K-A(config)# feature-set fcoe-npv
N9K-A(config)# interface vfc-port-channel 100
N9K-A(config-if)# switchport mode NP
N9K-A(config-if)# switchport trunk allowed vsan 20
- ☐ N9K-A(config)# feature-set fcoe-npv
N9K-A(config)# interface vfc-port-channel 100
N9K-A(config-if)# switchport mode E
N9K-A(config-if)# switchport trunk allowed vsan 1, 20

- A. Option A
- B. Option B
- C. Option C
- D. Option D

Answer: C

NEW QUESTION 143

A customer reports Fibre Channel login requests to a Cisco MDS 9000 series Switch from an unauthorized source. The customer requires a feature that will allow all devices already logged in and learned in and learned to be added to the Fibre channel active database. Which two features must be enabled to accomplish this goal?

(Choose two.)

- A. Auto-learning
- B. Port security
- C. Enhanced zoning
- D. Device aliases
- E. Smart aliases

Answer: AB

Explanation:

[https://www.cisco.com/en/US/docs/storage/san_switches/mds9000/sw/rel_3_x/configuration/guides/fm_3_3_1/p Port Security Activation](https://www.cisco.com/en/US/docs/storage/san_switches/mds9000/sw/rel_3_x/configuration/guides/fm_3_3_1/p%20Port%20Security%20Activation%20By%20default%20the%20port) By default, the port

security feature is not activated in any switch in the Cisco MDS 9000 Family. By activating the port security feature, the following apply: Auto-learning is also automatically enabled, which means: From this point, auto-learning happens for the devices or interfaces that were already logged into the switch and also for the new devices will login in future. You cannot activate the database until you disable auto-learning. All the devices that are already logged in are learned and are added to the active database. All entries in the configured database are copied to the active database. After the database is activated, subsequent device login is subject to the activated port bound WWN pairs, excluding the auto-learned entries. You must disable auto-learning before the auto-learned entries become activated.

NEW QUESTION 145

An engineer is implementing a Cisco ACI fabric and must use static VLAN range as part of a VMM deployment. The static VLAN must be incorporated into the dynamic VLAN pool. The existing VLAN pool is set for dynamic allocation. Which action accomplishes this goal?

- A. Add the VLAN to the pool configured with Inherit Allocation Mode from parent.
- B. Change the existing VLAN pool to static allocation mode.
- C. Add a static VLAN allocation range to the VLAN pool.
- D. Create a static reservation within the dynamic VLAN pool.

Answer: C

NEW QUESTION 148

Refer to the exhibit

MDS-B# show role			
Role: network-admin			
Description: Predefined Network Admin group. This role cannot be modified.			
Vsan policy: permit (default)			

Rule	Type	Command-type	Feature

1	permit	clear	*
2	permit	config	*
3	permit	debug	*
4	permit	exec	*
5	permit	show	*
Role: default-role			
Description: This is a system defined role and applies to all users.			
Vsan policy: permit (default)			

Rule	Type	Command-type	Feature

1	permit	show	system
2	permit	show	snmp
3	permit	show	module
4	permit	show	hardware
5	permit	show	environment
Role: san-users			
Description: SAN users			
Vsan policy: permit (default)			

A network engineer created a new role to be assigned to the SAN users The requirement is for users to have these characteristics

- > permitted to show access to the system, SNMP, module, and hardware information
- > permitted to run debug zone and exec fcping commands
- > restricted from accessing show feature environment command

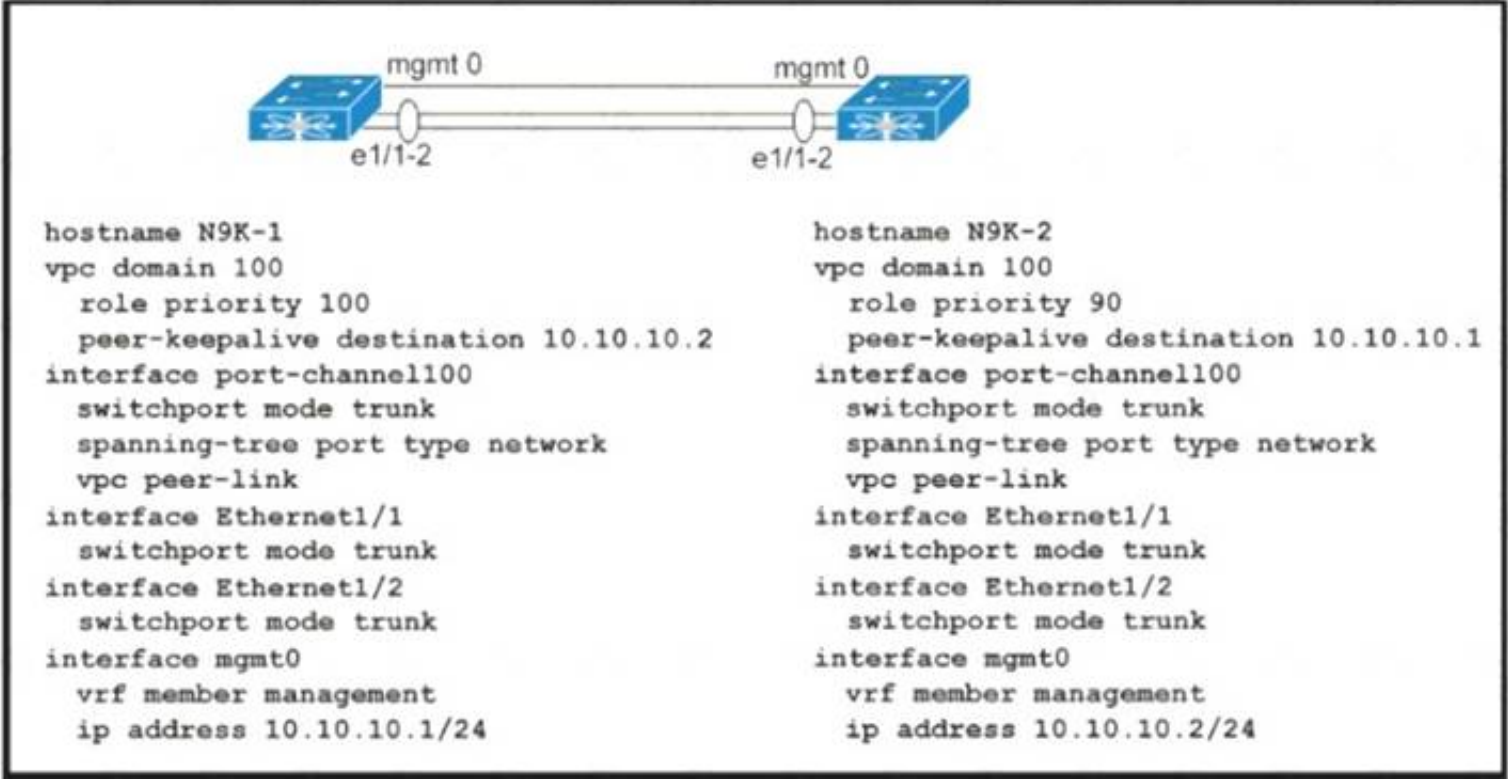
Which configuration set meets these requirements?

- A. Option A
- B. Option B
- C. Option C
- D. Option D

Answer: D

NEW QUESTION 152

Refer to the exhibit.



Which action completes the vPC domain implementation?

- A. Allow VLANs on the vPC peer link member interfaces.
- B. Include the VRF management on the vPC domain.
- C. Configure the system MAC on the vPC domain.
- D. Add the vPC member ports to the vPC channel group.

Answer: D

NEW QUESTION 155

A content delivery network sends video traffic to a multicast distribution device where the receiver requests the traffic from the multicast distribution device through an IGMP join message. When the traffic reaches the multicast routing device from a CDN, the switching network populates the multicast routing table in the group (S, G) and the multicast distribution device sends the required traffic back to the receiver. Which feature is used to send back the traffic from the streamer to the receiver in the group (S, G)?

- A. RP
- B. IGMP
- C. Reverse Path Forwarding
- D. Source Specific Multicast

Answer: C

NEW QUESTION 158

Drag and drop the keywords onto the URL request to collect all the subnets configured under tenant Production using a REST API. Not all options are used.

https://{apic_ip}/api/

/uni/tn-Production.json?

=

&

=fvSubenet

target-subtree-class

query-target-filter

query-target

children

subtree

class

mo

- A. Mastered
- B. Not Mastered

Answer: A

Explanation:

Graphical user interface, text Description automatically generated

NEW QUESTION 163

Refer to the exhibit.

```
switch# show vpc brief
Legend:
      (*) - local vPC is down, forwarding via vPC peer-link

vPC domain id          : 10
Peer status            : peer adjacency formed ok
vPC keep-alive status  : peer is alive
Configuration consistency status: success
Type-2 consistency status : success
vPC role               : primary
Number of vPCs configured : 1
Peer Gateway           : Enabled
Dual-active excluded VLANs : -

vPC Peer-link status
-----
id   Port   Status Active vlans
--   --
1    Po20   up    100-105

vPC status
-----
id   Port   Status Consistency Reason           Active vlans
--   --
7    Po7    up    success success           100-104
8    Po8    up    success success           100-102
9    Po9    up    success success           100-103
```

Which VLANs are capable to be assigned on vPC interfaces?

- A. 100-103
- B. 100-104
- C. 100-102
- D. 100-105

Answer: D

NEW QUESTION 164

An engineer is implementing the Cisco ACI fabric and must create two different vPCs from leaf switches A and B. The vPCs are deployed as follows:

- vPC 1 encompasses ports Eth 1 /1 on leaf A and B and connects to server 1.
- vPC 2 encompasses port Eth1/2 on leaf A and B and connects to server 2.

A leaf switch profile listing leaves A and B is already configured Which ACI object must be created to meet these requirements?

- A. two vPC interface policy groups
- B. one access port interface policy group
- C. two PortChannel interface policy groups
- D. one vPC interface policy group

Answer: A

NEW QUESTION 167

Refer to the exhibit.

```
UCS-A# scope adapter 1/1/1
UCS-A# /chassis/server/adapter # show image
Name                               Type      Version    State
-----
ucs-m81kr-vic.2.2.1b.bin  Adapter  2.2(1b)    Active

UCS-A# /chassis/server/adapter # update firmware 2.2(1b)
UCS-A# /chassis/server/adapter* # activate firmware 2.2(1b)
set-startup-only
UCS-A# /chassis/server/adapter* # commit-buffer
UCS-A# /chassis/server/adapter #
```

What is the result of this series of commands?

- A. It reboots the server immediately.
- B. It verifies the firmware update on the server.
- C. It activates the firmware on the next adapter boot.
- D. It updates the firmware on adapter 1/1/1 immediately.

Answer: C

Explanation:

https://www.cisco.com/c/en/us/td/docs/unified_computing/ucs/ucs-manager/CLI-User-Guides/Firmware-Mgmt/ Graphical user interface, text, application, email
 Description automatically generated

Step 6	UCS-A /chassis/server/adapter # activate firmware version-num [set- startup-only]	Activates the selected firmware version on the adapter. Use the set-startup-only keyword if you want to move the activated firmware into the pending-next-boot state and not immediately reboot the server. The activated firmware does not become the running version of firmware on the adapter until the server is rebooted. You cannot use the set-startup-only keyword for an adapter in the host firmware package.
--------	--	---

NEW QUESTION 169

An engineer must configure the HSRP protocol between two Cisco Nexus 9000 Series Switches This configuration is present on Nexus A.

```
! Nexus A
key chain NHRP-KEYS
key 1010
key-string 7 072a43795c1d0c4050883003163b3e2121a720361a021e11
accept-lifetime 00:00:00 Jan 01 2021 23:59:59 Aug 31 2021
send-lifetime 00:00:00 Jan 01 2021 23:59:59 Jul 31 2021
key 1020
key-string 7 086f43cd5c150c1702630203163b3e2221a520261a011a12
accept-lifetime 00:00:00 Jul 01 2021 23:59:59 Dec 31 2021
send-lifetime 00:00:00 Jul 01 2021 23:59:59 Dec 31 2021
interface ethernet 1/1
ip 209.165.200.226/27
hsrp 200
priority 201
ip 209.165.200.225
-- missing output --
no shutdown
```

The final HSRP configuration must meet these requirements

- > The HSRP communication must be secured on both switches
- > Both switches must support more than 300 groups

Which two commands must be added to the HSRP configuration on Nexus A to complete these requirements? (Choose two)

- A. hsrp version 1
- B. hsrp version 2
- C. authentication text 1020
- D. authenticate md5 key-chain NHRP-KEYS
- E. authentication text 1010

Answer: BD

NEW QUESTION 171

A Cisco UCS user called "Employee1" accidentally changed the boot policy of the Cisco UCS server at the Cisco UCS Manager root level. This change impacted all service profiles, and their storage connectivity was lost. The system administrator wants to prevent this issue from recurring in the future. The new security policy mandates that access must be restricted up to the organization level and prevent other users from modifying root policies. Which action must be taken to meet these requirements?

- A. Modify the privilege level assigned to the user
- B. Assign users to a specific Cisco UCS locale
- C. Assign the user "Employee1" the network-operator role
- D. Define a custom user role and assign it to users

Answer: B

Explanation:

[\[https://www.cisco.com/c/en/us/td/docs/unified_computing/ucs/ucs-manager/GUI-User-Guides/Admin-Management/4-1/b_Cisco_UCS_Admin_Mgmt_Guide_4-1/m_rolebased_access_control_configuration.html#d18994e1993a1635\]\(https://www.cisco.com/c/en/us/td/docs/unified_computing/ucs/ucs-manager/GUI-User-Guides/Admin-Management/4-1/b_Cisco_UCS_Admin_Mgmt_Guide_4-1/m_rolebased_access_control_configuration.html#d18994e1993a1635\)](https://www.cisco.com/c/en/us/td/docs/unified_computing/ucs/ucs-manager/GUI-User-Guides/Admin-Managem>User Locales You can assign a user to one or more locales. Each locale defines one or more organizations (domains) to which a user can access. Access is usually limited to the organizations specified in the locale.</p>
</div>
<div data-bbox=)

NEW QUESTION 172

What are two types of FC/FCoE oversubscription ratios? (Choose two.)

- A. server storage to end-node count
- B. port bandwidth to uplink bandwidth
- C. edge ISL bandwidth to core ISL bandwidth
- D. host bandwidth to storage bandwidth
- E. switch processing power to end-node processing power

Answer: CD

Explanation:

<https://www.ciscolive.com/c/dam/r/ciscolive/us/docs/2017/pdf/BRKDCN-1121.pdf>

https://www.cisco.com/c/en/us/td/docs/switches/datacenter/nexus5000/sw/operations/n5k_fcoe_ops.html

NEW QUESTION 173

The VMM domain is integrated between Cisco APICs and vCenter using a distributed vSwitch. The traffic must be blocked between a subset of endpoints in an EPG based on specific VM attributes and the rest of the VMs in that EPG. Which set of actions blocks this traffic?

- ☐ 1. Set Allow Microsegmentation under the EPG VMM Domain Association to "True"
2. Set Intra-EPG Isolation to "Enforced" for the EPG
3. Set Intra-EPG Isolation to "Enforced" for the uSeg EPG
- ☐ 1. Set Allow Microsegmentation under the EPG VMM Domain Association to "True"
2. Set Intra-EPG Isolation to "Unenforced" for the EPG
3. Set Intra-EPG Isolation to "Unenforced" for the uSeg EPG
- ☐ 1. Set Allow Microsegmentation under the EPG VMM Domain Association to "False"
2. Set Intra-EPG Isolation to "Unenforced" for the EPG
3. Set Intra-EPG Isolation to "Enforced" for the uSeg EPG
- ☒ 1. Set Allow Microsegmentation under the EPG VMM Domain Association to "True"
2. Set Intra-EPG Isolation to "Enforced" for the EPG
3. Set Intra-EPG Isolation to "Unenforced" for the uSeg EPG

- A. Option A
- B. Option B
- C. Option C
- D. Option D

Answer: A

NEW QUESTION 178

Refer to the exhibit.

```
<?xml version="1.0" encoding="UTF-8"?><imdata totalCount="1"><error  
code="403" text="Token was invalid (Error: Token timeout)"/></imdata>
```

An engineer configures a new application profile using REST API and receives this error message. Which method can be used before application profile can be configured?

- A. POST to aaaLogin
- B. POST to aaaRefresh
- C. POST to aaaLogout
- D. GET to aaaListDomains

Answer: A

Explanation:

https://www.cisco.com/c/en/us/td/docs/switches/datacenter/aci/apic/sw/2-x/rest_cfg/2_1_x/b_Cisco_APIC_REST_API_Configuration_Guide/b_Cisco_APIC_REST_API_Configuration_Guide_chapter_01.html

Authentication

REST API username- and password-based authentication uses a special subset of request Universal Resource Identifiers (URIs), including **aaaLogin**, **aaaLogout**, and **aaaRefresh** as the DN targets of a POST operation. Their payloads contain a simple XML or JSON payload containing the MO representation of an **aaaUser** object with the attribute name and **pwd** defining the username and password: for example, **<aaaUser name='admin' pwd='password'/>**. The response to the POST operation will contain an authentication token as both a Set-Cookie header and an attribute to the **aaaLogin** object in the response named **token**, for which the XPath is **/imdata/aaaLogin/@token** if the encoding is XML. Subsequent operations on the REST API can use this token value as a cookie named **APIC-cookie** to authenticate future requests.

Subscription

The REST API supports the subscription to one or more MOs during your active API session. When any MO is created, changed, or deleted because of a user- or system-initiated action, an event is generated. If the event changes the data on any of the active subscribed queries, the APIC will send out a notification to the API client that created the subscription.

NEW QUESTION 180

What are two capabilities of the Cisco Network Assurance Engine? (Choose two.)

- A. It verifies the speed of network packet flows by using telemetry.
- B. It predicts the network load on a data center.
- C. It validates that devices comply with network security policies.
- D. It ensures that network performance meets an SLA.
- E. It predicts the impact of changes to the network.

Answer: CE

Explanation:

- Predict the impact of network changes
- Verify network-wide behavior
- Ensure network security policy and compliance

<https://www.cisco.com/c/en/us/products/collateral/data-center-analytics/network-assurance-engine/at-a-glance-c>

NEW QUESTION 181

Which MAC address is an HSRP version 2?

- A. 0100.5E7F.FFFF
- B. 3799.9943.3000
- C. 0000.0C9F.F0C8
- D. 0000.0C07.AC1H

Answer: C

NEW QUESTION 184

Several production and development database servers exist in the same EPG and IP subnet. The IT security policy is to prevent connections between production and development. Which attribute must be used to assign the servers to different microsegments?

- A. Data center
- B. VMM domain
- C. VM name
- D. IP address

Answer: C

Explanation:

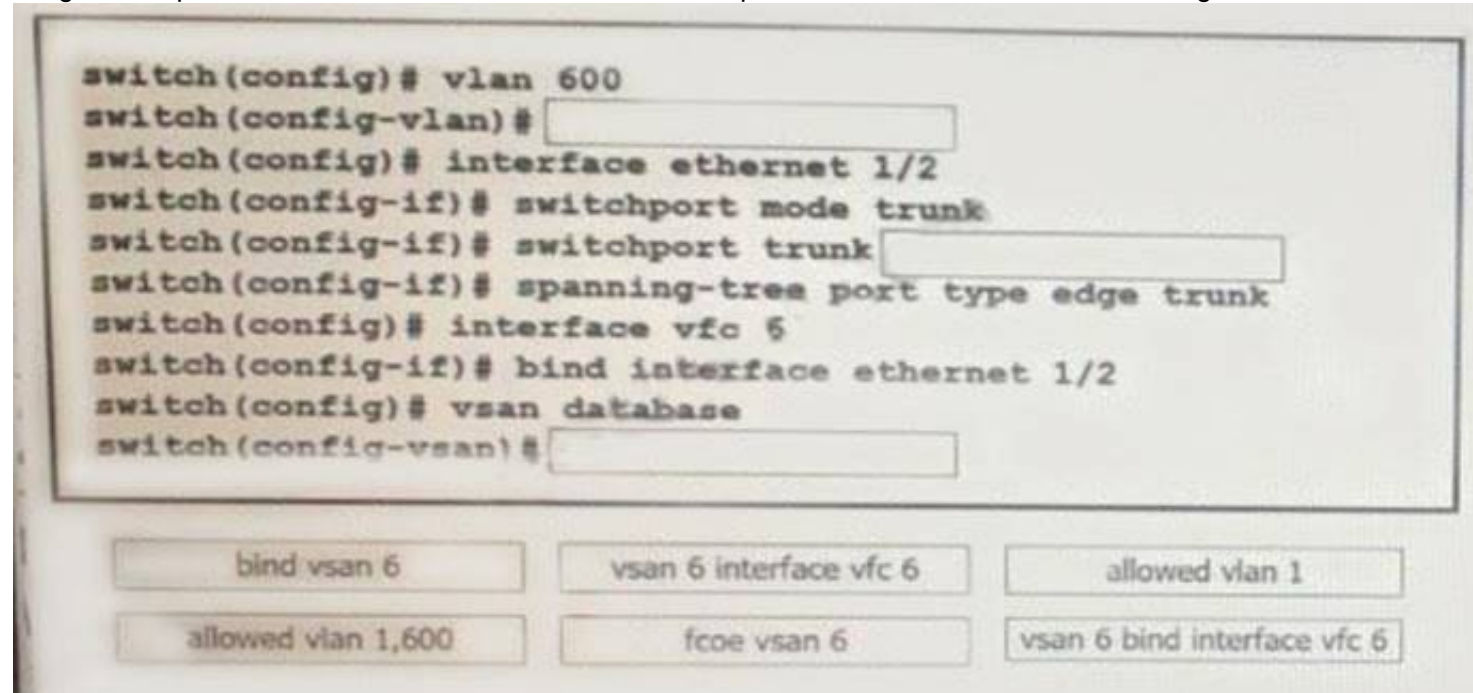
https://www.cisco.com/c/en/us/td/docs/switches/datacenter/aci/apic/sw/3-x/virtualization/b_ACI_Virtualization_

Example: **Microsegmentation with Cisco ACI Within a Single EPG or Multiple EPGs in the Same Tenant**

You might assign web servers to an EPG so that you can apply the similar policies. By default, all endpoints within an EPG can freely communicate with each other. However, if this web EPG contains a mix of production and development web servers, you might not want to allow communication between these different types of web servers. Microsegmentation with Cisco ACI allows you to create a new EPG and autoassign endpoints based on their VM name attribute, such as "Prod-xxxx" or "Dev-xxx".

NEW QUESTION 187

A network engineer must configure FCoE on an interface of a Cisco MDS 9000 Series Switch. It should be used for mapping between VLAN 600 and VSAN 6. Drag and drop the commands from the bottom into their implementation order in the FCoE configuration. Not all commands are used.



The screenshot shows a configuration window with a list of commands on the left and a drag-and-drop area on the right. The commands are:

```

switch(config)# vlan 600
switch(config-vlan)# 
switch(config)# interface ethernet 1/2
switch(config-if)# switchport mode trunk
switch(config-if)# switchport trunk 
switch(config-if)# spanning-tree port type edge trunk
switch(config)# interface vfc 6
switch(config-if)# bind interface ethernet 1/2
switch(config)# vsan database
switch(config-vsan)# 

```

The drag-and-drop area contains the following buttons:

- bind vsan 6
- vsan 6 interface vfc 6
- allowed vlan 1
- allowed vlan 1,600
- fcoe vsan 6
- vsan 6 bind interface vfc 6

- A. Mastered
- B. Not Mastered

Answer: A

Explanation:

Graphical user interface, text Description automatically generated

NEW QUESTION 189

An engineer needs to make an XML backup of Cisco UCS Manager. The backup should be transferred using an authenticated and encrypted tunnel and it should contain all system and service profiles configuration. Which command must be implemented to meet these requirements?

- ☐ create file scp://user@host35/backups/all-config9.bak all-configuration
- ☐ copy startup-config scp://user@host35/backups/all-config9.bak all-configuration
- ☒ create backup scp://user@host35/backups/all-config9.bak all-configuration
- ☐ copy running-config scp://user@host35/backups/all-config9.bak all-configuration

- A. Option A
- B. Option B
- C. Option C
- D. Option D

Answer: C

Explanation:

https://www.cisco.com/en/US/docs/unified_computing/ucs/sw/cli/config/guide/1.4.1/CLI_Config_Guide_1_4_1
 The following example creates a disabled all-configuration backup operation for hostname host35 and commits the transaction:

```
UCS-A# scope system
UCS-A /system* # create backup scp://user@host35/backups/all-config9.bak all-configuration disabled
Password:
UCS-A /system* # commit-buffer
UCS-A /system #
```

NEW QUESTION 193

A new user with access privileges in the Finance department moves to a new Admin department. The user must have access privileges to the Admin department data and applications inside the Cisco UCS Manager Which set of changes must be implemented in Cisco UCS Central for the user to acquire the privileges?

- A. Create an Admin user account and remove the authentication service for the Finance privileges.
- B. Disable the Finance user account and add the authentication service for the Admin privileges.
- C. Create a new locale Admin and add the Admin department to the Admin local
- D. Delete the old locale
- E. Finance and remove the Finance department from the Finance locale.

Answer: C

NEW QUESTION 196

Host 1 is in VLAN 100 located is DataCenter 1 and Host2 is in VLAN200 located in DataCenter2. Which OTV VLAN mapping configuration allows Layer 2 connectivity between these two hosts?

- A.


```
DC1:
interface Overlay1
  otv extend-vlan 100
  otv vlan mapping 100 to 200

DC2:
interface Overlay1
  otv extend-vlan 100
  otv vlan mapping 100 to 200
```
- B.


```
DC1:
interface Overlay1
  otv extend-vlan 100
  otv vlan mapping 100 to 200

DC2:
interface Overlay1
  otv extend-vlan 200
```


- C. DC1:
interface Overlay1
otv extend-vlan 100
- DC2:
interface Overlay2
otv extend-vlan 200
- D. DC1:
interface Overlay1
otv extend-vlan 100
- DC2:
interface Overlay1
otv extend-vlan 200

- A. Option A
B. Option B
C. Option C
D. Option D

Answer: B

Explanation:

<https://www.cisco.com/c/en/us/support/docs/switches/nexus-7000-series-switches/200998-Nexus-7000-OTV-V>
<https://www.cisco.com/c/en/us/support/docs/switches/nexus-7000-series-switches/200998-Nexus-7000-OTV-V>

NEW QUESTION 197

A network administrator must automate the process of pinging all the IP addresses from the 10.0.0.0/8 subnet. The subnet is already present in the ARP table of the Cisco Nexus switch. Drag and drop the bash commands to generate the desired output. Not all commands are used.

```
bash-4.3$ | grep "^10\." | | |  
--- 10.1.0.2 ping statistics ---  
5 packets transmitted, 5 packets received, 0.00% packet loss  
--- 10.1.0.77 ping statistics ---  
5 packets transmitted, 0 packets received, 100.00% packet loss
```

awk '{print "ping " \$1}'

egrep "statistics|loss"

grep -v "statistics|loss"

sed -e 's/ping /10./g'

show ip arp

vsh

vsh -c "show ip arp"

- A. Mastered
B. Not Mastered

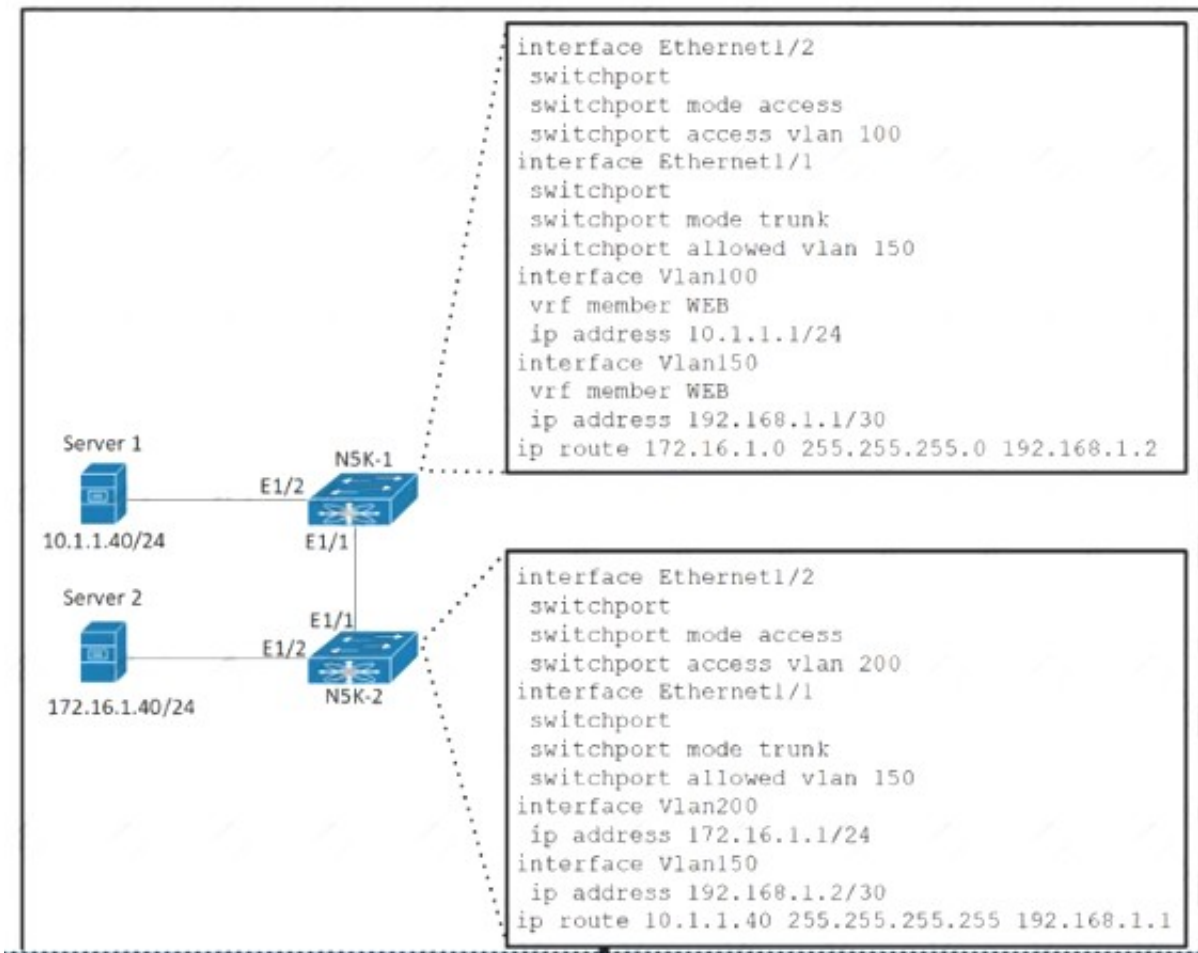
Answer: A

Explanation:

vsh -c "show ip arp", awk'{print "ping" \$1}', vsh, egrep "statistics|loss"

NEW QUESTION 200

Refer to the exhibit.



The gateway of Server 1 is in the VLAN 100 SVI on N5K-1 and the gateway of Server 2 is in the VLAN 200 SVI on N5K-2. Server 1 must connect to Server 2 using unidirectional traffic. Which action accomplishes this requirement?

- A. Add VLAN 100 and 200 to the allowed VLANs list on the Ethernet 1/1 interface on N5K-1.
- B. Assign VRF WEB membership to interfaces VLAN 150 and 200 on N5K-2.
- C. Configure access VLAN 100 on interface Ethernet 1/2 on N5K-2.
- D. Create a static route in VRF WEB for the subnet of Server 2 on N5K-1

Answer: B

NEW QUESTION 201

Refer to the exhibit.



Which backup operation type does not include the Preserve Identities feature?

- A. logical configuration
- B. system configuration
- C. full state
- D. all configuration

Answer: C

Explanation:

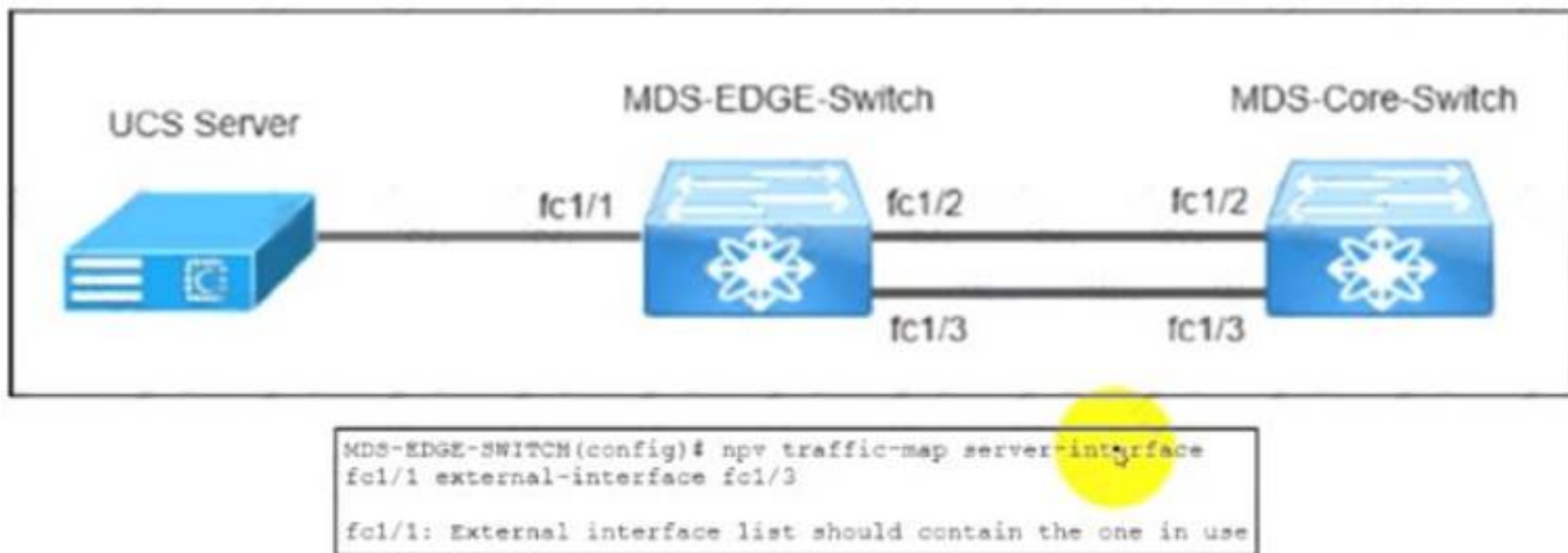
This checkbox remains selected for All Configuration and System Configuration. Full State backup does not have Preserve Identity feature.

All configs, logical and system backups seem to allow "preserve identities":

<https://books.google.pt/books?id=5VXUDwAAQBAJ&pg=PT699&lpg=PT699&dq=Preserve+Identities+feature+backup+ucs&source=bl&ots=daWxti4DV&sig=ACfU3U3X8UIPtS8EewzRIqTxqpyNVqOaNQ&hl=es419&sa=X&ved=2ahUKEwiYhtaxyMDqAhXFzIUkHXI8CzoQ6AEwC3oECAoQAQ#v=onepage&q=Preserve%20Identities%20feature%20backup%20ucs&f=false>

NEW QUESTION 204

Refer to the exhibit.



The MDS-EDGE-Switch and MDS-Core-Switch are configured with NPV and NPIV features. The FLOGI from Cisco UCS is received by the MDS-Core-Switch on interface fc1/2. An engineer tried to move all traffic between the MDS-EDGE-Switch and MOS-Core-Switch from interface fc 1/2 to fc1/3, but the attempt failed. Which set of actions completes the configuration?

- ☐ Disable the NPV feature in the MDS-EDGE-Switch.
Re-enable the NPV feature.
Disable interface fc1/1.
- ☐ Disable the NPIV feature in the MDS-EDGE-Switch.
Re-enable the NPIV feature.
Disable interface fc1/3.
- ☐ Shut down fc1/1 in the MDS-EDGE-Switch.
Re-apply the command.
Enable interface fc1/1.
- ☒ Shutdown fc1/3 in the MDS-EDGE-Switch.
Re-apply the command.
Enable interface fc1/3.

- A. Option A
- B. Option B
- C. Option C
- D. Option D

Answer: C

NEW QUESTION 206

Refer to the exhibit.

```

monitor fabric session mySession
description "This is my fabric ERSPAN session"
destination tenant t1 application appl epg epg1 destination-ip 192.0.20.123 source-ip-prefix 10.0.20.1
erspan-id 100
ip dscp 42
ip ttl 16
mtu 9216
exit
source interface eth 1/1 switch 101
direction tx
filter tenant t1 bd bd1
filter tenant t1 vrf vrf1
no shut
  
```

An engineer needs to implement a monitoring session that should meet the following requirements:

- Monitor traffic from leaf to leaf switches on a Cisco ACI network
- Support filtering traffic from Bridge Domain or VRF

Which configuration must be added to meet these requirements?

- A. interface eth 1/2 switch 101
- B. interface eth 1/2 leaf 101
- C. filter tenant t1 application app1 epg epg1
- D. application epg epg1 app1

Answer: C

NEW QUESTION 210

An engineer must perform an initial configuration of VXLAN Tunnel End-Point functionality on the Cisco Nexus 9000 Series platform. All the necessary features are already enabled on the switch. Which configuration set must be used to accomplish this goal?

- ☐ NX9K(config)# interface loopback0
NX9K(config-if)# ip address 10.10.10.11/32

NX9K(config)# interface overlay0
NX9K(config-if-overlay)# source-interface loopback0

NX9K(config)# interface VLAN10
NX9K(config-if-nve)# source-interface loopback0
- ☐ NX9K(config)# interface loopback0
NX9K(config-if)# ip address 10.10.10.11/32

NX9K(config)# interface tunnel1
NX9K(config-if)# tunnel source loopback0

NX9K(config)# interface ethernet1/1
NX9K(config-if)# ip unnumbered loopback0
- ☐ NX9K(config)# interface loopback0
NX9K(config-if)# ip address 10.10.10.11/32

NX9K(config)# interface nve1
NX9K(config-if-nve)# source-interface loopback0

NX9K(config)# interface ethernet1/1
NX9K(config-if)# ip unnumbered loopback0
- ☐ NX9K(config)# interface loopback0
NX9K(config-if)# ip address 10.10.10.11/32

NX9K(config)# interface VLAN10
NX9K(config-if)# ip unnumbered loopback0

NX9K(config)# interface nve1
NX9K(config-if-nve)# source-interface loopback0

- A. Option A
- B. Option B
- C. Option C
- D. Option D

Answer: D

NEW QUESTION 215

A network architect must redesign a data center on OSPFv2. The network must perform fast reconvergence between directly connected switches. Which two actions must be taken to meet the requirement? (Choose two)

- A. Configure all links on AREA 0.
- B. Implement a virtual link between the switches.
- C. Use OSPF point-to-point links only.
- D. Set low OSPF hello and DEAD timers.
- E. Enable BFD for failure detection.

Answer: CD

NEW QUESTION 219

An engineer must ensure fabric redundancy when implementing NPV mode on a Cisco MDS 9000 Series Switch. Which action enables fabric redundancy?

- A. Connect the NPV devices to multiple upstream switches.
- B. Add a port channel to upstream switches.
- C. Configure the NPV devices to use on external FLOGI database.
- D. Use TE ports to connect to upstream switches.

Answer: B

NEW QUESTION 223

Refer to the exhibit.

```
show incompatibility-all system bootflash:n7000-s1-dk9.4.2.4.bin
```

Software downgrade is required on a Cisco Nexus 7000 Series Switch. What is displayed when this command is executed?

- A. features and commands that are removed automatically from the configuration
- B. features that are enabled automatically after the downgrade
- C. compatibility of software in the system bootflash file
- D. impact of a software upgrade in ISSU and chassis reload

Answer: A

NEW QUESTION 224

What is a benefit of independent resource scaling in Cisco HyperFlex hybrid architecture?

- A. flexible expansion of compute, caching, and capacity
- B. remote booting of converged servers
- C. multivendor converged node hardware support
- D. support for compute nodes with third-party storage

Answer: D

NEW QUESTION 227

A network engineer is asked to describe the cloud infrastructure models from the perspective of their operation and access to resources. Drag and drop the descriptions from the left onto the appropriate.

Provisioned for open use.	Private cloud
At least two or more separate cloud infrastructures are connected together to facilitate hosted data and application portability.	Community cloud
Owned, managed, and operated by one or more organizations or teams.	Public cloud
Owned, managed, and operated by a single organization.	Hybrid cloud

- A. Mastered
- B. Not Mastered

Answer: A

Explanation:

Private Cloud: owned, managed, and operated by a single organization.

Community Cloud: Owned, managed, and operated by one or more organizations or teams. Public Cloud: Provisioned for open use.

Hybrid Cloud: At least two or more separate cloud infrastructures are connected together to facilitate hosted data and application portability.

NEW QUESTION 228

An engineer configures an intersight virtual application and must claim over 200 targets. The engineer starts the Claim target procedure. The engineer has prepared this initial comma-separated value file to provision the targets:

```
UCSFI,10.1.1.3,user-1,pwd5516b917
IMC,10.1.1.5/26,user-2,pwdc65b1c43f
HX,10.1.2.1/30,user-3,pwd39860437
UCSD,1.1.1.1,user-4,pwd5003c9d5
```

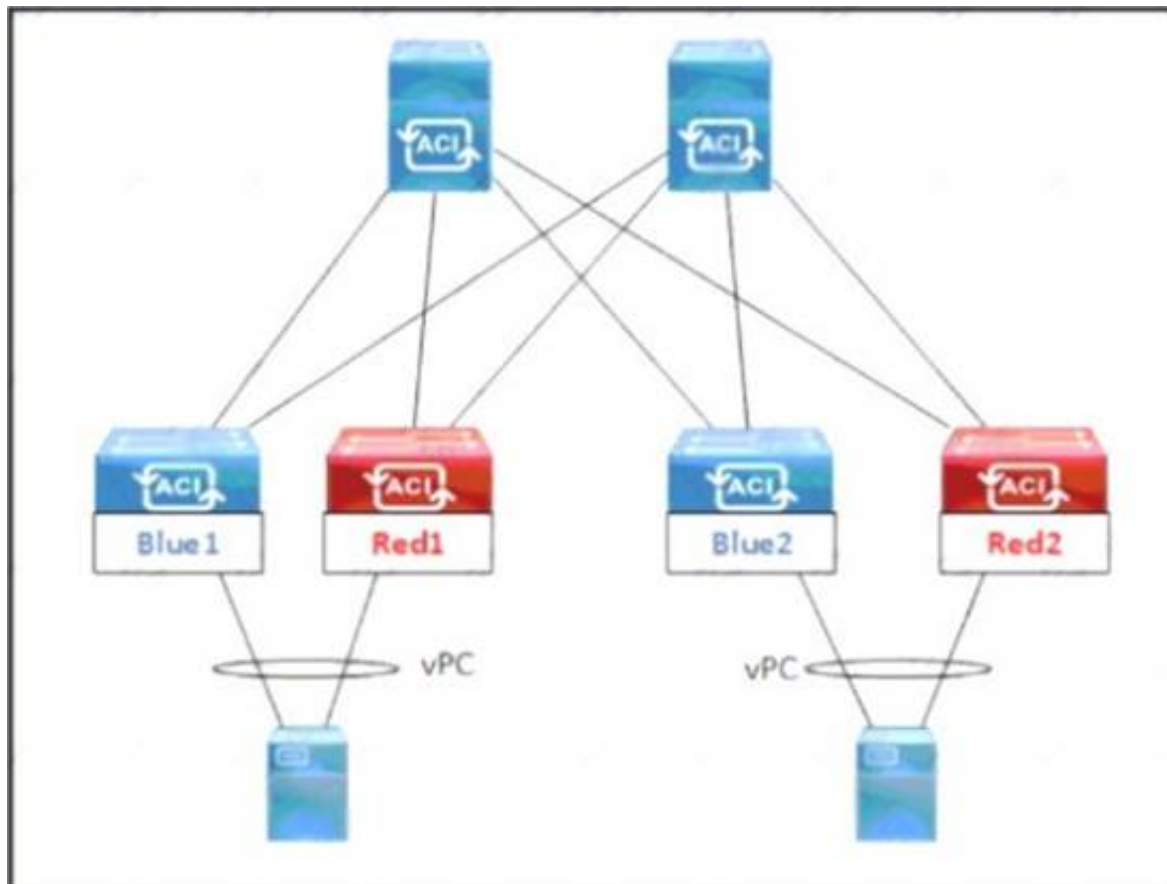
Which Information must be included In the comma-separated value flit to provision the targets?

- A. FQON, AD name, IP address, email
- B. location, address, nam
- C. password
- D. certificate, user name, passwor
- E. email
- F. target type, hostname or P address, user name, password

Answer: A

NEW QUESTION 230

Refer to the exhibit.



An engineer must schedule the firmware upgrade of the Red1 and Red2 leaf switches. The requirement is to keep the upgrade time to the minimum, avoid any service impact, and perform the parallel upgrade Which set of scheduler attributes must be used to meet these requirements?

- ☐ • Configure SchedulerPolicy1 for all four leaf switches Blue1, Blue2, Red1, and Red2.
 • Configure SchedulerPolicy1 and SchedulerPolicy2 with a one-time window trigger that has maximum concurrent nodes 1.
- ☐ • Configure SchedulerPolicy1 for leaf switches Blue1 and Red1, and SchedulerPolicy2 for leaf switches Blue2 and Red2.
 • Configure SchedulerPolicy1 and SchedulerPolicy2 with a one-time window trigger that has maximum concurrent nodes 2.
- ☐ • Configure SchedulerPolicy1 for all four leaf switches Blue1, Blue2, Red1, and Red2.
 • Configure SchedulerPolicy1 and SchedulerPolicy2 with a one-time window trigger that has maximum concurrent nodes 2.
- ☐ • Configure SchedulerPolicy1 for leaf switches Blue1 and Red1, and SchedulerPolicy2 for leaf switches Blue2 and Red2.
 • Configure SchedulerPolicy1 and SchedulerPolicy2 with a one-time window trigger that has maximum concurrent nodes 1.

- A. Option A
- B. Option B
- C. Option C
- D. Option D

Answer: D

NEW QUESTION 232

An engineer performs a Cisco UCS C480 ML M5 installation from a Cisco UCS Manager As a part of the design the server must perform an iSCSI boot from the storage array Which configuration must be performed in the SAN settings in the root organization to satisfy that condition?

- A. Implement a WWPN pool
- B. Create a virtual iSCSI vNIC
- C. Enable a host SAN pool
- D. Create an IQN suffix pool

Answer: D

NEW QUESTION 233

An engineer is configuring HTTPS access to Cisco UCS Manager The engineer created a keyring and created the certificate request for the keyring Cisco UCS Manager continues to receive untrusted messages from a Firefox browser and a Chrome browser Which action must be taken as the next step in the HTTPS access configuration?

- A. Create a trusted point
- B. Sign the certificate using the Cisco UCS Manager.
- C. Obtain a validated certificate from Cisco
- D. Install a trusted certificate in the browser store

Answer: A

NEW QUESTION 238

An administrator is implementing DCNM so that events are triggered when monitored traffic exceeds the configured present utilization threshold. The requirement is to configuration a maximum limit of 39860437 bytes that applies directly to the statistics collected as a ratio of the total link capacity. Which DCNM performance monitoring configuration parameter must be implemented to achieve this result?

- A. Absolution Values

- B. Baseline
- C. Util%
- D. Per port Monitoring

Answer: A

NEW QUESTION 240

An engineer is implementing security on the Cisco MDS 9000 switch. Drag drop the descriptions from the left onto the correct security features on the right.

can be distributed via fabric services

uses the Exchange Fabric Membership Data protocol

allows a preconfigured set of Fibre Channel devices to logically connect to SAN ports

prevent unauthorized switches from joining the fabric or disrupting current fabric operations

Fabric Binding

Target 1

Target 2

Port Security

Target 3

Target 4

- A. Mastered
- B. Not Mastered

Answer: A

Explanation:

can be distributed via fabric services

uses the Exchange Fabric Membership Data protocol

allows a preconfigured set of Fibre Channel devices to logically connect to SAN ports

prevent unauthorized switches from joining the fabric or disrupting current fabric operations

Fabric Binding

prevent unauthorized switches from joining the fabric or disrupting current fabric operations

uses the Exchange Fabric Membership Data protocol

Port Security

can be distributed via fabric services

allows a preconfigured set of Fibre Channel devices to logically connect to SAN ports

NEW QUESTION 244

An engineer must generate a Cisco UCS Manager backup. The backup should include all logical configuration and contain all system and logical configuration settings. Which backup type should be selected to meet these requirements?

- A. system configuration
- B. logical configuration
- C. all configuration
- D. full state

Answer: C

NEW QUESTION 247

What is a characteristic of the NFS protocol?

- A. It is used for booting Cisco UCS B-Series servers.
- B. It is used to access a storage array at a block level.
- C. It uses UDP and HTTP as its transport.
- D. It uses remote procedure calls with TCP/IP for transport.

Answer: D

NEW QUESTION 251

An engineer must implement a new VRF that permits communication between all endpoint groups (EPGs) by default. The new EPGs and bridge domains (BDs) that are created in the new VRF must not require additional configuration to permit traffic between the newly created EPGs or BDs. Which action accomplishes this

goal'

- A. Provide and consume a permit any contract on the VRF level
- B. Create a VRF in the common tenant.
- C. Place all EPGs in the preferred group.
- D. Implement a global contract.

Answer: C

NEW QUESTION 255

An engineer must implement a solution that prevents untrusted DHCP servers from compromising the network. The feature must be configured on a Cisco Nexus 7000 Series Switch and applied to VLAN 10. The legitimate DHCP servers are connected to interface Ethernet 2/4. Which configuration set must be used to meet these requirements?

- ☐ n7k-1(config)# ip dhcp snooping vlan 10
n7k-1(config)# interface Ethernet2/4
n7k-1(config-if)# ip dhcp snooping trust
- ☒ n7k-1(config)# ip dhcp snooping vlan 10
n7k-1(config)# interface Ethernet2/4
n7k-1(config-if)# ip dhcp snooping verify vlan 10
- ☐ n7k-1(config)# ip dhcp snooping verify
n7k-1(config)# interface Ethernet2/4
n7k-1(config-if)# ip dhcp snooping verify vlan 10
- ☐ n7k-1(config)# ip dhcp snooping verify
n7k-1(config)# vlan configuration 10
n7k-1(config-vlan)# ip dhcp snooping trust

- A. Option A
- B. Option B
- C. Option C
- D. Option D

Answer: A

NEW QUESTION 258

Which statement is true about upgrading the firmware on a Cisco MDS storage switch with dual supervisors?

- A. The standby supervisor must be offline before the firmware upgrade begins.
- B. Both supervisors load the new firmware and then the active supervisor reboots.
- C. Supervisors can be upgraded independently to test the new firmware.
- D. The new firmware is load on the standby supervisor first.

Answer: D

Explanation:

<https://www.cisco.com/c/en/us/support/docs/storage-networking/mds-9000-nx-os-san-os-software/118952-technote-mds9k-00.html#:~:text=On%20a%2095xx%20or%2097xx,becomes%20the%20new%20standby%20supervisor.>

NEW QUESTION 262

An engineer must generate a checkpoint of the running configuration on a Cisco Nexus Switch. The checkpoint file name must be called "before_maintenance" and should be used for recovering the switch to its pre- maintenance state. The rollback of the checkpoint to running configuration should only occur if no errors occur. Which two configuration commands must be used to meet these requirements? (Choose two.)

- A. rollback checkpoint file before_maintenance stop-at-first-failure
- B. rollback running-conf file before_maintenance
- C. checkpoint file before_maintenance
- D. checkpoint before_maintenance
- E. rollback running-conf file before_maintenance atomic

Answer: CE

NEW QUESTION 267

An engineer is implementing FCoE. Which aspect of DCBXP on a Cisco Nexus switch affects this implementation?

- A. It uses the Cisco Fabric Services protocol to exchange parameters between two peer links.
- B. It always is enabled on 10/100-Mbps native Ethernet ports.
- C. It provides the authentication of peers on the Cisco Nexus switch.
- D. It requires that LLDP transmit and LLDP receive are enabled on the FCoE interface.

Answer: D

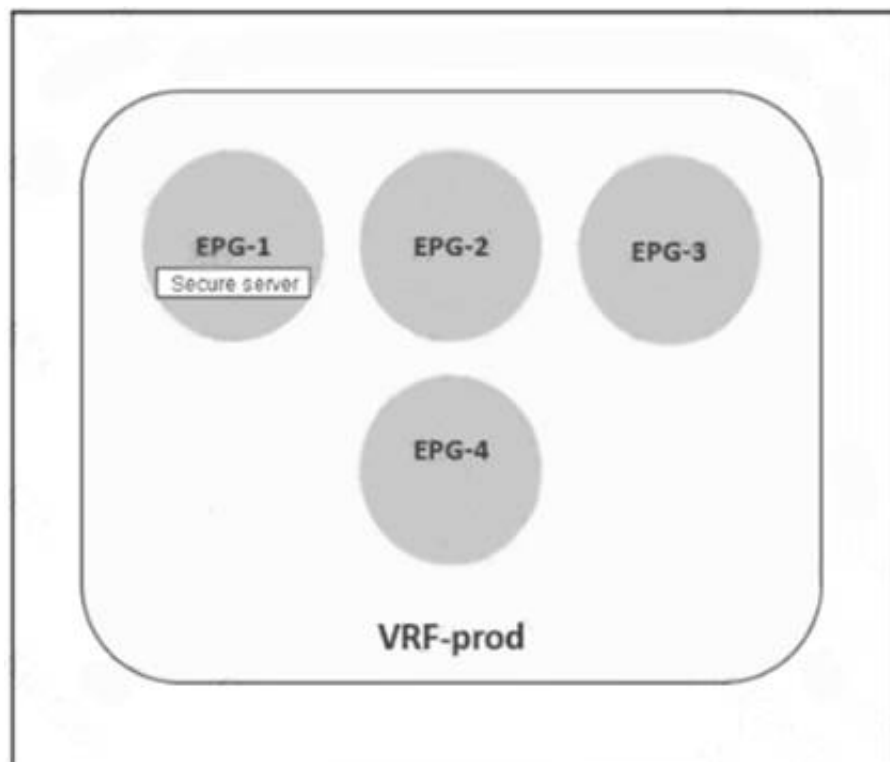
Explanation:

The Data Center Bridging Exchange Protocol (DCBXP) is an extension of LLDP. It is used to announce, exchange, and negotiate node parameters between peers. DCBXP parameters are packaged into a specific DCBXP TLV. This TLV is designed to provide an acknowledgement to the received LLDP packet. DCBXP is

enabled by default, provided LLDP is enabled. DCBXP is disabled on ports where LLDP transmit or receive is disabled.
https://www.cisco.com/c/en/us/td/docs/switches/datacenter/nexus5000/sw/layer2/503_n2_1/b_Cisco_n5k_layer2

NEW QUESTION 271

Refer to the exhibit.



A secure server that provides services to EPG-2 must be placed in EPG-1. The remaining EPGs—EPG-2, EPG-3, and EPG-4—must communicate without any contracts. Which set of actions accomplishes this goal?

- ☒ Exclude EPG-2, EPG-3, and EPG-4 from the preferred group.
Configure a contract between EPG-2 and EPG-3.
- ☐ Include EPG-2, EPG-3, and EPG-4 in the preferred group.
Configure a contract between EPG-1 and EPG-2.
- ☐ Include EPG-1 and EPG-2 in the preferred group.
Configure a contract between EPG-2 and EPG-3.
- ☐ Exclude EPG-2, EPG-3, and EPG-4 from the preferred group.
Configure a contract between EPG-1 and EPG-3.

- A. Option A
- B. Option B
- C. Option C
- D. Option D

Answer: B

NEW QUESTION 276

A network engineer must implement a telemetry solution to collect real-time structured data in a large-scale network. Drag and drop the actions from the left into the order on the right to implement the solution. Not all actions are used.

Configure the flow monitor and flow record.	step 1
Set the format and destination to which the data is sent.	step 2
Configure the data to be collected as part of the sensor group.	step 3
Set the subscription between the sensor group and the destination.	

- A. Mastered
- B. Not Mastered

Answer: A

Explanation:

- * 1. set the format and destination to which the data is sent.
- * 2. configure the data to be collected as part of the sensor group.
- * 3. set the subscription between the sensor-group and the destination.

NEW QUESTION 279

A small remote office is set to connect to the regional hub site via NSSA ASBR. Which type of LSA is sent to the remote office OSPF area?

- A. type 7 LSA
- B. type 3 LSA
- C. type 1 LSA
- D. type 5 LSA

Answer: A

NEW QUESTION 282

Which component is excluded by default from the host firmware package?

- A. network interface controller
- B. board controller
- C. storage controller
- D. local disk

Answer: D

NEW QUESTION 287

A DevOps engineer must implement a bash script to query a REST API and return the available methods. Which code snippet completes the script?

```
curl -i -X --missing code-- http://api.cisco.com:8080/api -u admin:xT41M5P3X425VOE71NB5D
```

- A. DELETE
- B. TRACE
- C. POST
- D. OPTIONS

Answer: C

NEW QUESTION 288

An engineer implements a Python script inside a Cisco Bash shell The script contains this dictionary object

```
switch_id_list = {  
    "N9K-Spine-1": "842534699747",  
    "N9K-Leaf-1": "126784690",  
    "N9K-Leaf-2": "56556473"  
}
```

Which command must be used to add the 'NSK-Spine-2': '1498323434' element to the switch_id list dictionary?

- ☒ switch_id_list = [{"N9K-Spine-2": "1498323434"}]
- ☐ switch_id_list.update({"N9K-Spine-2": "1498323434"})
- ☐ switch_id_list.append({"N9K-Spine-2": "1498323434"})
- ☐ switch_id_list += {"N9K-Spine-2": "1498323434"}

- A. Option A
- B. Option B
- C. Option C
- D. Option D

Answer: C

NEW QUESTION 291

An engineer must configure the order in which the server attempts to boot from available boot device types using Cisco Integrated Management Controller (Cisco IMC). The engineer must change the boot order configuration during the setup and apply the new requirements multiple times. The requirement is to change the Cisco IMC actual boot order so it is different from the configured boot order. Which setting accomplishes this goal?

- A. Enable the system to boot with the configured boot order.
- B. Set the boot configuration directly through BIOS.
- C. Configure the legacy and precision boot order to be mutually exclusive.
- D. Apply UEFI Secure Boot for a nonsupported operating system.

Answer: A

Explanation:

https://www.cisco.com/en/US/docs/unified_computing/ucs/c/sw/gui/config/guide/1.5/b_Cisco_UCS_C-series_G

NEW QUESTION 292

Refer to the exhibit.

```
import time
import cli

date= time.strftime('%Y%m%d')
file=
cli.execute ('copy running-config ftp://10.183.249.182/FusionSW/' + file)
exit()
```

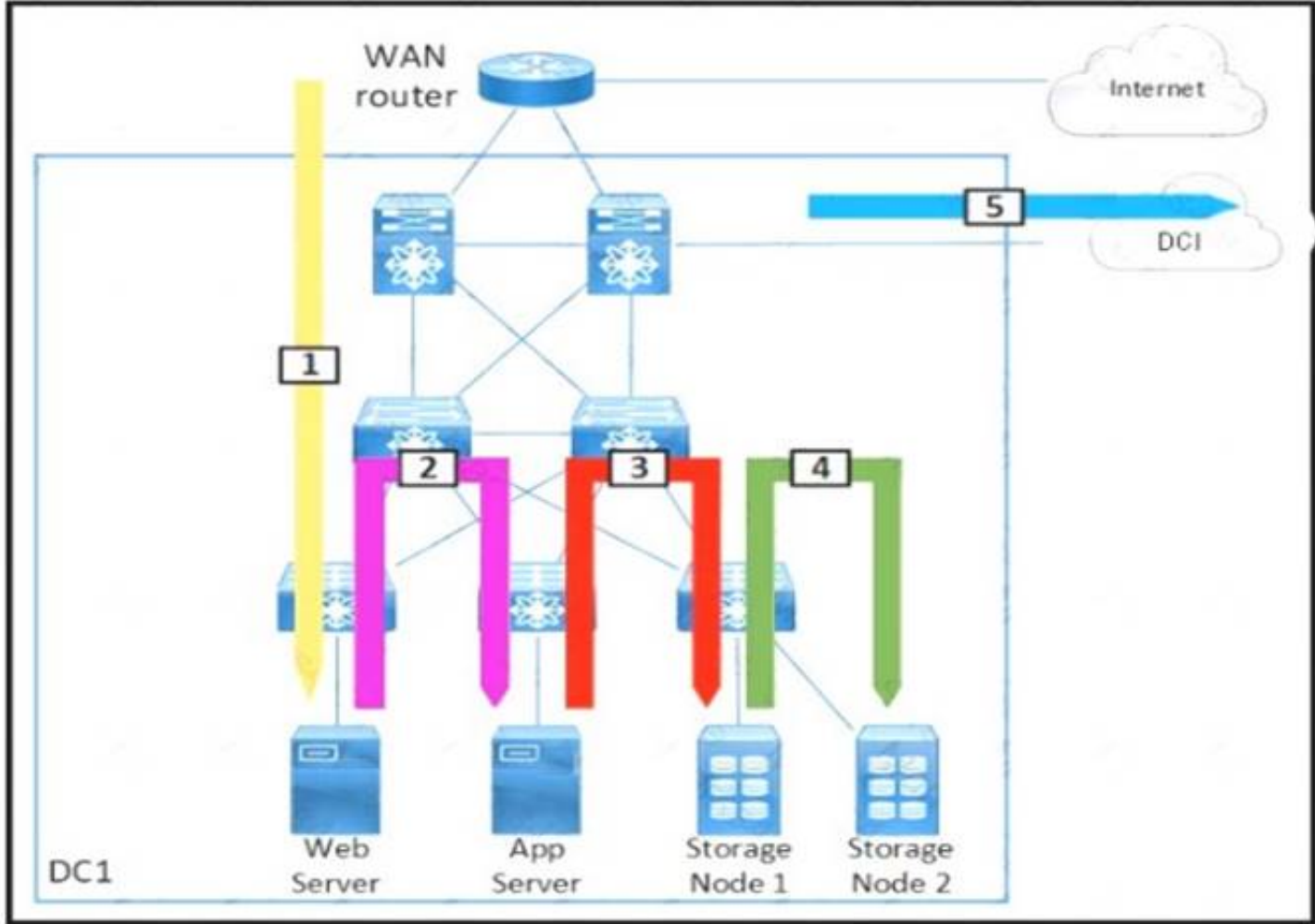
Which command needs to be added to the line starting with the "file" keyword to have the generated running-config file with the name 'fusion-config_' and current date?

- A. string(Cfusion-config_) + date)
- B. ('fusion-config') + date
- C. str.fusion-config) + date
- D. (*fusion-config_ * date')

Answer: B

NEW QUESTION 293

Refer to the exhibit.



Drag and drop each traffic flow type from the left onto the corresponding number on the right Not all traffic flow types are used

Inter-Data Center	1
East-West	2
North-West	3
North-South	4
South-West	5
Storage Traffic	
Storage Replication	

- A. Mastered
- B. Not Mastered

Answer: A

Explanation:

Table Description automatically generated

NEW QUESTION 294

An engineer wants to create a backup of Cisco UCS Manager for disaster recovery purposes. What are two characteristics of a full state backup of a Cisco UCS Manager database? (Choose two.)

- A. performs a complete binary dump of the database as a .txz file
- B. contains all of the configurations
- C. performs a complete binary dump of the database as a bin file
- D. performs a complete binary dump of the databases as a sql file
- E. contains all of the runtime states and statuses but not the configurations

Answer: AB

Explanation:

File: compressed file in .tar.gz format

<https://www.virtual-odyssey.com/2019/10/31/its-the-little-stuff-cisco-ucs-backups/> the file extension for bin in a cisco context is usually the OS.

tar files are used for backup. <https://peazip.github.io/tar-file-format.html>

NEW QUESTION 297

An engineer configured an environment that contains the vPC and non-vPC switches. However, it was noticed that the downstream non-vPC switches do not receive the upstream vPC switch peers. Which vPC feature must be implemented to ensure that vPC and non-vPC switches receive same STP bridge ID from the upstream vPC switch peers?

- A. vpc local role-priority 4000
- B. peer-switch
- C. system-mac 0123.4567.89ab
- D. peer-gateway

Answer: B

Explanation:

Peer-Switch feature allows the vPC peers use the same STP root ID as well as the same bridge ID.

NEW QUESTION 301

Refer to the exhibit.

```
Switch1# show checkpoint summary
1) pim-checkpoint:
Created by admin
Created at Tue, 00:50:29 22 Jun 2021
Size is 24,855 bytes
User Checkpoint Summary
-----
Description: Created by Admin.

2) system-fm-pim:
Created by admin
Created at Tue, 00:08:57 22 Jun 2021
Size is 24,834 bytes
System Checkpoint Summary
-----
Description: Created by Feature Manager.
```

Which command must be used to restore configuration changes made by disabling the PIM feature and skipping any errors?

Refer to the exhibit. Which command must be used to restore configuration changes made by disabling the PIM feature and skipping any errors?

- A. rollback running-config checkpoint new-checkpoint stop-at-first-failure
- B. rollback running-config checkpoint new-checkpoint verbose
- C. rollback running-config checkpoint system-fm-pim-best-effort
- D. rollback running-config checkpoint system-fm-pim atomic

Answer: C

NEW QUESTION 302

A network architect is asked to design and manage geographically distributed data centers across cities and decides to use a Multi-Site Orchestrator deployment. How many orchestrators should be deployed?

- A. 3
- B. 5
- C. 4
- D. 2

Answer: A

Explanation:

<https://www.cisco.com/c/en/us/solutions/collateral/data-center-virtualization/application-centricinfrastructure/w>

NEW QUESTION 304

An infrastructure architect is analyzing the deployment type for an application. Several companies must be able to operate the application environment and integrate it with a third-party protocol. The development team also must have maximum control over their development environment, Including the operating system used, Python interpreter, and corresponding libraries. Which cloud deployment solution meets these requirements?

- A. public cloud Storage as a Service
- B. private cloud Platform as a Service
- C. hybrid cloud Software as a Service
- D. community cloud Infrastructure as a Service

Answer: D

NEW QUESTION 306

.....

Relate Links

100% Pass Your 350-601 Exam with ExamBible Prep Materials

<https://www.exambible.com/350-601-exam/>

Contact us

We are proud of our high-quality customer service, which serves you around the clock 24/7.

Viste - <https://www.exambible.com/>