

Cisco

Exam Questions 300-415

Implementing Cisco SD-WAN Solutions (ENSDWI)



NEW QUESTION 1

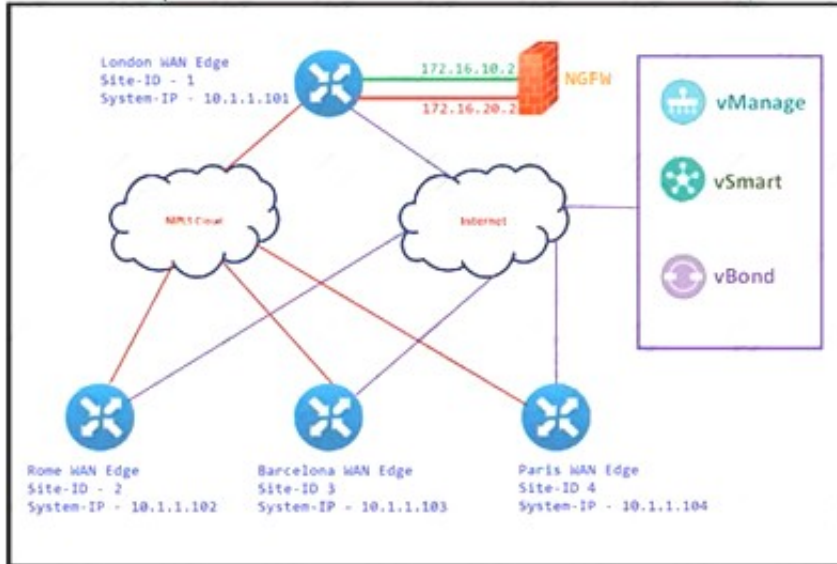
Which two image formats are supported for controller codes? (Choose two.)

- A. .nxos
- B. .qcow2
- C. .ova
- D. .bin
- E. Tgz

Answer: BC

NEW QUESTION 2

Refer to the exhibit.



The Cisco SD-WAN is deployed using the default topology. The engineer wants to configure a service insertion policy such that all data traffic between Rome to Paris is forwarded through the NGFW located in London. Which configuration fulfills this requirement, assuming that the Service VPN ID is 1?

A)

```

London WAN Edge
vpn 1
 service netsvc1 address 172.16.10.2
 service netsvc2 address 172.16.20.2

vSmart Policy
policy
 lists
  site-list ROME
  site-id 2
  site-list PARIS
  site-id 4
 control-policy NGFW-SI
 sequence 1
  match route
  site-id ROME
  action accept
  set service netsvc1 vpn 1
 sequence 2
  match route
  site-id PARIS
  action accept
  set service netsvc2 vpn 1
 default-action accept
 !
 apply-policy
 site-list ROME
 control-policy NGFW-SI out
 !
 site-list PARIS
 control-policy NGFW-SI out

```

B)

```

London WAN Edge
vpn 1
 service netsvc1 address 172.16.10.2
 service netsvc2 address 172.16.20.2

vSmart Policy
policy
 lists
  site-list ROME
  site-id 2
  site-list PARIS
  site-id 4
 control-policy NGFW-SI
 sequence 1
  match route
  site-id ROME
  action accept
 sequence 2
  match route
  site-id PARIS
  action accept
 default-action accept
 !
 apply-policy
 site-list ROME control-policy NGFW-SI out

```

C)

```

○ ROME WAN Edge
service FW address 10.1.1.101

PARIS WAN Edge
service FW address 10.1.1.101

vSmart Policy
policy
lists
site-list ROME
site-id 2
site-list PARIS
site-id 4
control-policy NGFW-SI
sequence 1
match route
site-id ROME
action accept
set service netsvc1 vpn 1
sequence 2
match route
site-id PARIS
action accept
set service netsvc2 vpn 1
default-action accept
!
apply-policy
site-list ROME
control-policy NGFW-SI out
!
site-list PARIS
control-policy NGFW-SI out

```

D)

```

○ ROME WAN Edge
service FW address 10.1.1.101

PARIS WAN Edge
service FW address 10.1.1.101

vSmart Policy
policy
lists
site-list ROME
site-id 2
site-list PARIS
site-id 4
control-policy NGFW-SI
sequence 1
match route
site-id ROME
action accept
sequence 2
match route
site-id PARIS
action accept
default-action accept
!
apply-policy
site-list ROME control-policy NGFW-SI out

```

- A. Option A
- B. Option B
- C. Option C
- D. Option D

Answer: A

NEW QUESTION 3

An engineer is configuring a centralized policy to influence network route advertisement. Which controller delivers this policy to the fabric?

- A. vSmart
- B. vManage
- C. WAN Edge
- D. vBond

Answer: A

Explanation:

vSmart controllers are the centralized brain of the solution; they implement policies and connectivity between SD-WAN branches. The centralized policy engine in Cisco vSmart controllers provides policy constructs to manipulate routing information, access control, segmentation, extranets, and service chaining.

NEW QUESTION 4

Which two platforms for the Cisco SD-WAN architecture are deployable in a hypervisor on-premises or in IAAS Cloud? (Choose two.)

- A. CSR 1000v
- B. vEdge 100c
- C. vEdge Cloud
- D. vEdge 2000
- E. ISR 4431

Answer: AC

NEW QUESTION 5

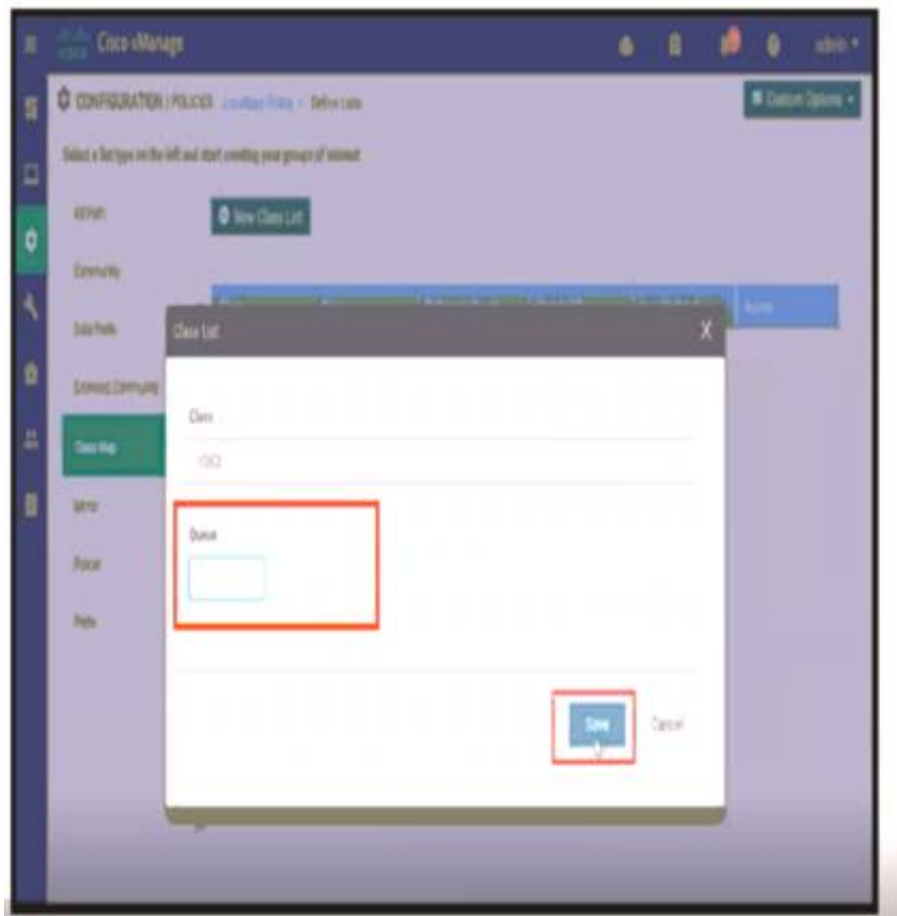
What is the role of the Session Traversal Utilities for NAT server provided by the vBond orchestrator?

- A. It facilitates SD-WAN toners and controllers to discover their own mapped or translated IP addresses and port numbers
- B. It prevents SD-WAN Edge routers from forming sessions with public transports among different service providers
- C. It facilitates SD-WAN Edge routers to stay behind a NAT-enabled firewall while the transport addresses of the SD-WAN controller are unNAT-ed
- D. It allows WAN Edge routers to form sessions among MPLS TLOCs using only public IP addresses

Answer: C

NEW QUESTION 6

Refer to the exhibit.



A network administrator is setting the queueing value for voice traffic for one of the WAN Edge routers using vManager GUI. Which queue value must be set to accomplish this task?

- A. 1
- B. 2
- C. 3

Answer: A

NEW QUESTION 7

An engineering team must prepare a traffic engineering policy where an MPLS circuit is preferred for traffic coming from the Admin VLAN Internet should be used as a backup only. Which configuration fulfill this requirement?

A)

```
policy
data-policy _TE
vpn-list VPN_10
sequence 1
match
source-data-prefix-list Source_Prefix
destination-data-prefix-list Dest_Prefix
action accept
set
vpn 10
tloc-list Hub_TLOCs
default-action reject
!
tloc-list Hub_TLOCs
tloc 10.4.4.4 color mpls encap ipsec preference 300
tloc 10.4.4.4 color public-internet encap ipsec preference 600
```

B)

```
policy
data-policy _TE
vpn-list VPN_10
sequence 1
match
source-data-prefix-list Source_Prefix
destination-data-prefix-list Dest_Prefix
action accept
nat use-vpn 0
nat fallback
default-action reject
!
tloc-list Hub_TLOCs
tloc 10.4.4.4 color mpls encap ipsec preference 300
tloc 10.4.4.4 color public-internet encap ipsec preference 600
```

C)

```
policy
data-policy _TE
vpn-list VPN_10
sequence 1
match
source-data-prefix-list Source_Prefix
destination-data-prefix-list Dest_Prefix
action accept
set
vpn 10
tloc-list Hub_TLOCs
default-action accept
!
tloc-list Hub_TLOCs
tloc 10.4.4.4 color mpls encap ipsec preference 600
tloc 10.4.4.4 color public-internet encap ipsec preference 300
```

D)

```
policy
data-policy _TE
vpn-list VPN_10
sequence 1
match
source-data-prefix-list Source_Prefix
destination-data-prefix-list Dest_Prefix
action accept
set
vpn 512
tloc-list Hub_TLOCs
default-action accept
!
tloc-list Hub_TLOCs
tloc 10.4.4.4 color mpls encap ipsec preference 600
tloc 10.4.4.4 color public-internet encap ipsec preference 300
```

- A. Option A
- B. Option B
- C. Option C
- D. Option D

Answer: C

NEW QUESTION 8

Which hardware component is involved in the Cisco SD-WAN authentication process for ISR platforms?

- A. TPMD
- B. ZTP
- C. TPC
- D. SUDI

Answer: D

NEW QUESTION 9

On which device is a service FW address configured to Insert firewall service at the hub?

- A. vEdge at the branch
- B. vSmart at the hub
- C. vEdge at the hub
- D. vSmart at the branch

Answer: C

NEW QUESTION 10

Which API call retrieves a list of all devices in the network?

- A. https://vmanage_IP_address/dataservice/system/device/{{model}}
- B. http://vmanage_IP_address/dataservice/system/device/{{model}}
- C. http://vmanage_IP_address/api-call/system/device/{{model}}
- D. https://vmanage_IP_address/api-call/system/device/{{model}}

Answer: A

Explanation:

Display all available vEdge routers in the overlay network.

```
GET https://{vmanage-ip-address}/dataservice/system/device/vedges
```


NEW QUESTION 10

An engineer is configuring a data policy for IPv4 prefixes for a single WAN Edge device on a site with multiple WAN Edge devices How is this policy added using the policy configuration wizard?

- A. In vManage NMS, select the configure policies screen, select the localized policy tab and click add policy
- B. In vSmart controller, select the configure policies screen, select the localized policy ta
- C. and click add policy
- D. In vManage NM
- E. select the configure policies screen select the centralized policy tab and click add policy
- F. In vBond orchestrator
- G. select the configure policies screen, select the localized policy ta
- H. and click add policy

Answer: A

NEW QUESTION 12

Refer to the exhibit

PEER TYPE	PEER PROTOCOL	PEER SYSTEM	SITE IP	DOMAIN ID	PEER PRIVATE IP	PRIVATE PORT	PEER PUBLIC IP	PUBLIC PORT	LOCAL COLOR	STATE	LOCAL ERROR	REMOTE ERROR	REPEAT COUNT
vbond	dtls	-	0	0	209.165.200.230	12346	209.165.200.230	12346	biz-internet	tear_down	CTORGNNMIS	NOERR	14
vbond	dtls	-	0	0	209.165.201.137	12346	209.165.201.137	12346	biz-internet	tear_down	CTORGNNMIS	NOERR	13

An engineer is getting a CTORGNNMIS error on a controller connection Which action resolves this issue?

- A. Configure a valid serial number on the WAN Edge
- B. Configure a valid organization name
- C. Configure a valid certificate on vSMART
- D. Configure a valid product ID

Answer: B

NEW QUESTION 13

What is the minimum Red Hat Enterprise Linux operating system requirement for a Cisco SD-WAN controller deployment via KVM?

- A. RHEL7.5
- B. RHEL 6.5
- C. RHEL4.4
- D. RHEL 6.7

Answer: D

NEW QUESTION 18

Which type of certificate is installed on vManage for a user to access vManage via a web browser?

- A. Controller Certificate
- B. Web Server Certificate
- C. WAN Edge Certificate
- D. SD-AVC Certificate

Answer: B

NEW QUESTION 22

Which two requirements must be met for DNS inspection when integrating with cisco umbrella? (Choose two)

- A. Upload the WAN Edge serial allow list to the Umbrella portal.
- B. Attach security policy to the device template.
- C. Configure the Umbrella token on the vManage
- D. Create and attach a System feature template with the Umbrella registration credentials.
- E. Register and configure the vManage public IP and serial number in the Umbrella portal.

Answer: BC

Explanation:

<https://www.connection.com/~media/pdfs/brands/c/cisco/security/cnxd-cisco-sd-wan-and-umbrella.pdf?la=en>

NEW QUESTION 26

An engineer must apply the configuration for certificate installation to vBond Orchestrator and vSmart Controller. Which configuration accomplishes this task?

☐

vpn 512

interface eth1

ip address 199.1.1.1/28

tunnel-interface

allow-service netconf

no allow-service ntp

no allow-service stun

☐

vpn 0

interface eth1

ip address 199.1.1.1/28

tunnel-interface

allow-service sshd

allow-service ntp

☐

vpn 512

interface eth1

ip address 199.1.1.1/28

tunnel-interface

allow-service sshd

allow-service netconf

☐

vpn 0

interface eth1

ip address 199.1.1.1/28

tunnel-interface

allow-service sshd

allow-service netconf

no shutdown

- A. Option A
- B. Option B
- C. Option C
- D. Option D

Answer: D

NEW QUESTION 31

Which two virtualized environments are available for a company to install the controllers using the on-premises model? (Choose two)

- A. VMware vSphere ESXi
- B. VMware Workstation
- C. kernel-based virtual machine
- D. OpenStack
- E. Microsoft Hyper-V

Answer: AD

NEW QUESTION 34

An engineer configures an application-aware routing policy for a group of sites. The locations depend on public and private transports. The policy does not work as expected when one of the transports does not perform properly. This policy is configured:

```

policy
sla-class BULK_DATA
loss 20
latency 300
jitter 100
!
sla-class TRANSACTIONAL_DATA
loss 15
latency 50
jitter 100
!
sla-class REALTIME
loss 20
latency 100
jitter 30
!
app-route-policy VPN-10_MPLS_AND_INET_SITES
vpn-list VPN-10
sequence 1
match
dscp 46
!
action
backup-sla-preferred-color biz-internet
sla-class REALTIME preferred-color private1
!
!
sequence 11
match
dscp 34
!
action
backup-sla-preferred-color biz-internet
sla-class TRANSACTIONAL_DATA preferred-color private1
!
!
!

```

which configuration completes the policy so that it works for all locations?

A)

```

sla-class TRANSACTIONAL_DATA
loss 5
latency 50
jitter 100
!
sla-class REALTIME
loss 2
latency 100
jitter 30
!

```

B)

```

sla-class TRANSACTIONAL_DATA
loss 2
latency 100
jitter 30
!
sla-class REALTIME
loss 15
latency 100
jitter 100
!

```

C)

```

sla-class BULK_DATA
loss 10
latency 300
jitter 100
!
sla-class REALTIME
loss 2
latency 100
jitter 30
!

```

D)


```
sla-class BULK_DATA
loss 15
latency 100
jitter 100
!
sla-class TRANSACTIONAL_DATA
loss 10
latency 300
jitter 100
!
```

- A. Option A
- B. Option B
- C. Option C
- D. Option D

Answer: A

NEW QUESTION 37

What are the two impacts of losing vManage connectivity to fabric in the Cisco SD-WAN network? (Choose two)

- A. Policy changes propagation stops
- B. Statistics collection stops
- C. BFD peering between WAN Edge devices are unestablished
- D. Creation of templates is impossible
- E. IPsec tunnels tear down for WAN Edge devices.

Answer: AB

NEW QUESTION 40

An engineer wants to change the configuration of the certificate authorization mode from manual to automated. Which GUI selection will accomplish this?

- A. Maintenance > Security
- B. Configuration > Certificates
- C. Administration > Settings
- D. Tools > Operational Commands

Answer: C

Explanation:

Runbook to Request and Install Cisco PKI Certificates

1. Verify that you have satisfied the prerequisites and that you have added the Smart Account credentials.
2. Navigate to **Administration ► Settings ► Controller Certificate Authorization** and press Edit.
3. Select the **radio button Cisco Automated** (Recommended).

NEW QUESTION 41

Which component is used for stateful inspection of TCP, UDP, and ICMP flows in Cisco SD-WAN firewall policies?

- A. zones
- B. sites
- C. subnets
- D. interfaces

Answer: A

NEW QUESTION 45

Drag and drop the devices from the left into order on the right to upgrade the software from version 19 to version 20.

WAN Edge	1
vBond	2
vManage	3
vSmart	4

- A. Mastered
- B. Not Mastered

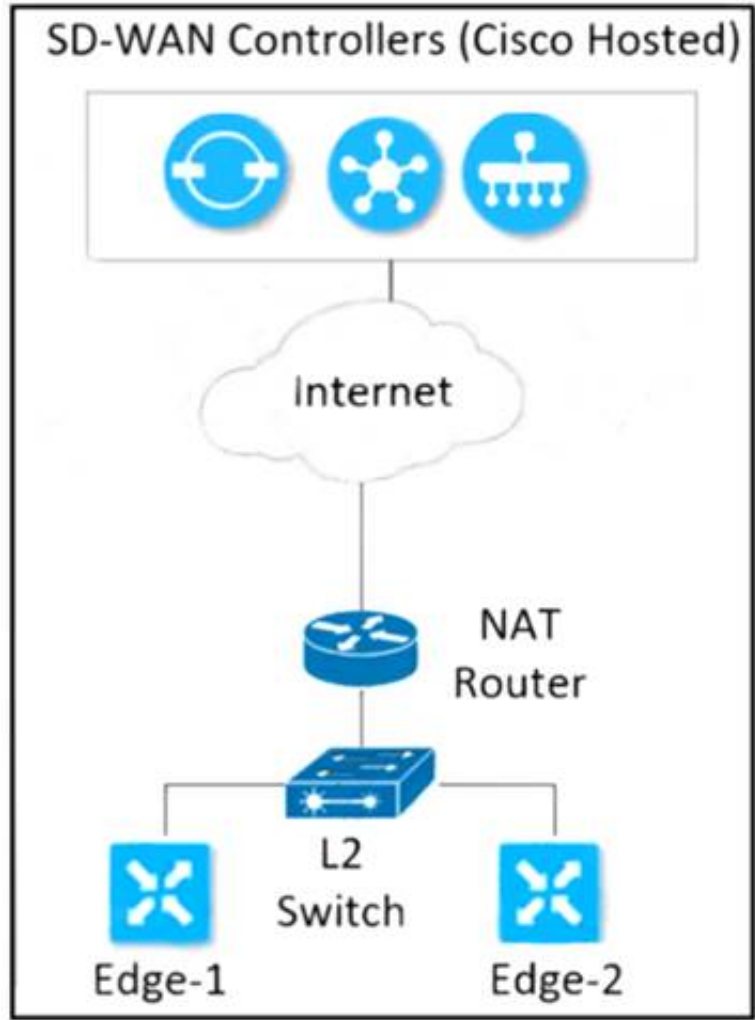
Answer: A

Explanation:



NEW QUESTION 50

Refer to the exhibit



Which configuration must the engineer use to form underlay connectivity for the Cisco SD-WAN network?

A)

```
R1
vpn 512
interface eth0
ip address 10.0.0.21/24
no shutdown
!
ip route 0.0.0.0/0 10.0.0.254
```

```
R2
vpn 512
interface eth0
ip address 10.0.0.2/24
no shutdown
!
ip route 0.0.0.0/0 10.0.0.254
```

B)

```
R1
vpn 10
interface ge0/2
ip address 10.10.10.9/29
no shutdown
!
ip route 0.0.0.0/0 10.10.10.11
```

```
R2
vpn 10
interface ge0/2
ip address 10.10.10.10/29
no shutdown
!
ip route 0.0.0.0/0 10.10.10.11
```

C)

```
R1
vpn 0
interface 10ge0/0
ip address 10.50.0.2/29
no shutdown
!
ip route 0.0.0.0/0 10.50.0.3
```

```
R2
vpn 0
interface 10ge0/0
ip address 10.50.0.1/29
no shutdown
!
ip route 0.0.0.0/0 10.50.0.3
```

D)

```
R1
vpn 0
interface ge0/0
ip address 10.50.0.2/30
tunnel-interface
!
ip route 0.0.0.0/0 10.50.0.4
```

```
R2
vpn 0
interface ge0/0
ip address 10.50.0.3/30
tunnel-interface
!
ip route 0.0.0.0/0 10.50.0.4
```

- A. Option A
- B. Option B
- C. Option C
- D. Option D

Answer: C

NEW QUESTION 52

Which component of the Cisco SD-WAN control plane architecture should be located in a public Internet address space and facilitates NAT-traversal?

- A. vBond
- B. WAN Edge
- C. vSmart
- D. vManage

Answer: A

NEW QUESTION 54

A network administrator is configuring a centralized control policy based on match action pairs for multiple conditions, which order must be configured to prefer Prefix List over TLOC and TLOC over Origin?

- A. highest to lowest sequence number
- B. nonsequential order
- C. deterministic order
- D. lowest to highest sequence number

Answer: D

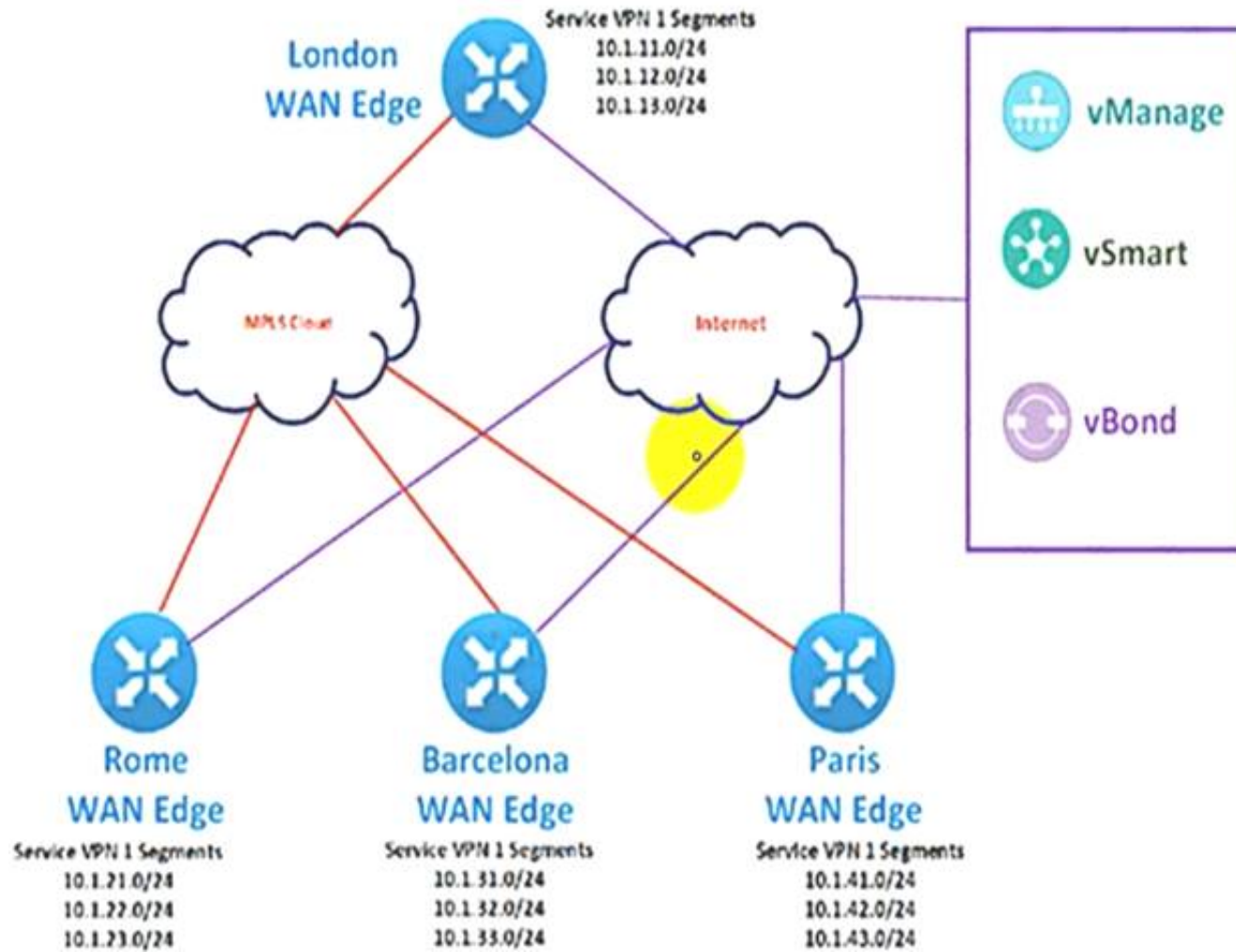
Explanation:

A centralized control policy consists of a series of numbered (ordered) sequences of match-action pairs that are evaluated in order, from lowest sequence number to highest sequence number. When a route or TLOC matches the match conditions, the associated action or actions are taken and policy evaluation on that packets stops. Keep this process in mind as you design your policies to ensure that the desired actions are taken on the items subject to policy.

If a route or TLOC matches no parameters in any of the sequences in the policy configure, it is, by default, rejected and discarded.

NEW QUESTION 56

Refer to the exhibit.



The Cisco SD-WAN network is configured with a default full-mesh topology. An engineer wants Paris WAN Edge to use the Internet HOC as the preferred TLOC for MSN Messenger and AOL Messenger traffic. Which policy achieves this goal?

A)

B)

C)

D)

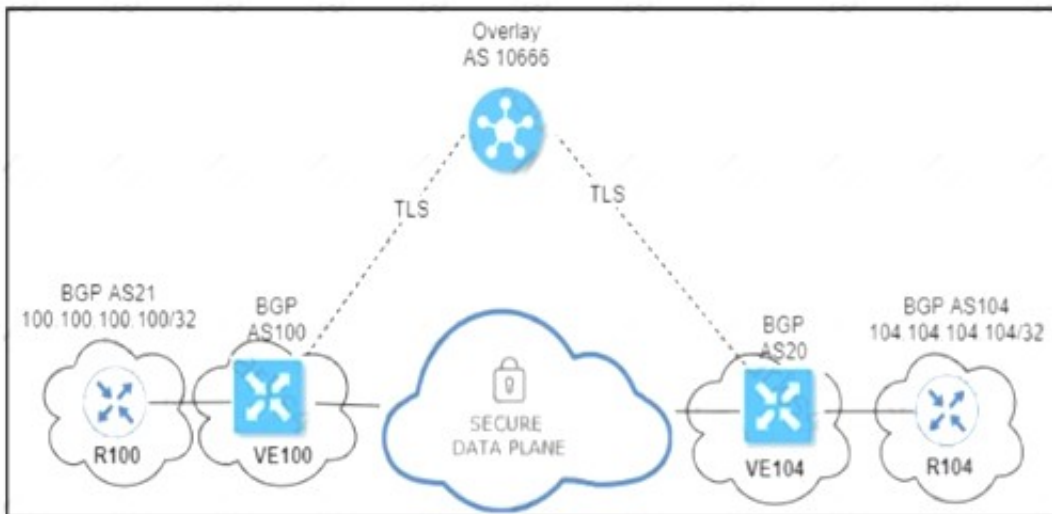


- A. Option A
- B. Option B
- C. Option C
- D. Option D

Answer: A

NEW QUESTION 57

Refer to the exhibit.



An engineer configured OMP with an overlay-as of 10666. What is the AS-PATH for prefix 104.104.104.104/32 on R100?

- A. 100 10666 104
- B. 100 10666
- C. 100 10666 20 104
- D. 100 20 104

Answer: A

NEW QUESTION 61

Which platform is a Cisco SD-WAN virtual platform?

- A. Cisco ISR 4000
- B. Cisco Nexus 1000V
- C. Cisco CSR 1000V
- D. Cisco ASR 1000

Answer: C

NEW QUESTION 62

Which configuration step is taken on vManage after WAN Edge list is uploaded?

- A. Send the list to controllers
- B. Enable the ZTP process
- C. Verify the device certificate
- D. Set the device as valid

Answer: D

Explanation:

<https://www.cisco.com/c/dam/en/us/td/docs/solutions/CVD/SDWAN/sdwan-wan-edge-onboarding-deploy-guid>

device state must be moved from staging to valid. In vManage under **Configuration > Certificates > WAN Edge List**, select the WAN Edge device(s) and change the state to **valid** under the **Validity** column and click **Send to Controllers**.

NEW QUESTION 67

A network engineer must configure all branches to communicate with each other through the Service Chain Firewall located at the headquarters site. Which configuration allows the engineer to accomplish this task?

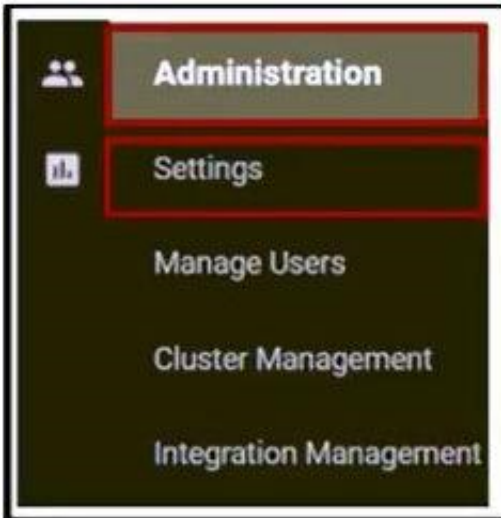
A)



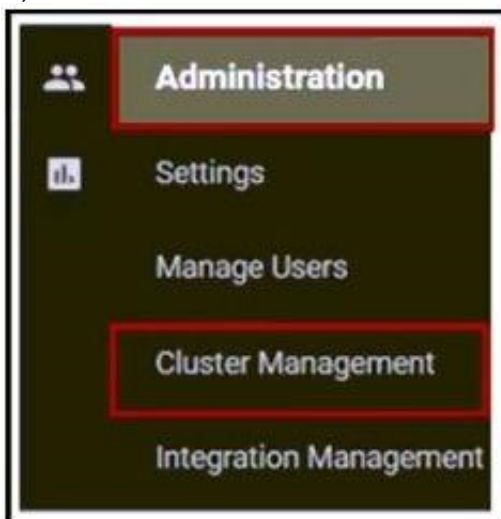
B)



C)



D)



- A. Option A
- B. Option B
- C. Option C
- D. Option D

Answer: B

NEW QUESTION 71

Which routing protocol has the highest default administrative distance?

- A. OMP
- B. external EIGRP
- C. IS-IS
- D. IBGP

Answer: A

NEW QUESTION 76

A network administrator is configuring VRRP to avoid a traffic black hole when the transport side of the network is down on the master device. What must be configured to get the fastest failover to standby?

- A. lower timer interval
- B. prefix-list tracking
- C. higher group ID number
- D. OMP tracking

Answer: B

Explanation:

```
vEdge(config-vrrp)# track-prefix-list list-name
```

If all OMP sessions are lost, VRRP failover occurs as described for the track-omp option. In addition, if reachability to all the prefixes in the list is lost, VRRP failover occurs immediately, without waiting for the OMP hold timer to expire, thus minimizing the amount of overlay traffic is dropped while the vEdge routers determine the VRRP master.

NEW QUESTION 77

Which port is used for vBond under controller certificates if no alternate port is configured?

- A. 12345
- B. 12347
- C. 12346
- D. 12344

Answer: C

Explanation:

vSmart and vManage are normally installed behind NAT device, so port hopping is not needed. vBond always uses to other Viptela devices using port 12346 and they never use port hopping.

NEW QUESTION 79

Which configuration allows users to reach YouTube from a local Internet breakout?

A)

```
VPN 10
ip route 0.0.0.0/0 vpn 0
```

B)

```
VPN 10
ip route 0.0.0.0/0 vpn 0
VPN 0
interface Gig1/1
nat
```

C)

```
policy
data-policy DPI
vpn-list vpn10
sequence 10
match
app-list YouTube
destination-port 80 443
!
action accept
count Youtube
!
default-action accept
!
lists
vpn-list vpn10
vpn 10
!
app-list YouTube
app youtube
app youtube_hd
!
site-list Remote
site-id 14
site-id 15
!
!
!
apply-policy
site-list Remote
data-policy DPI from-transport
```

D)

```
policy
data-policy DPI
vpn-list vpn10
sequence 10
match
app-list YouTube
!
action drop
count Youtube
!
default-action accept
!
lists
vpn-list vpn10
vpn 10
!
app-list YouTube
app youtube
app youtube_hd
!
site-list Remote
site-id 14
site-id 15
!
apply-policy
site-list Remote
data-policy DPI from-transport

vpn 10
ip route 0.0.0.0/0 vpn 0
```

- A. Option A
- B. Option B
- C. Option C
- D. Option D

Answer: B

Explanation:

As explained in figure 7, within the direct Internet model, segmentation is leveraged by deploying centralized data policies or a NAT DIA route to leak Internet traffic from the service-side VPN (VPNs 0 - 511,513 - 65530) into the Internet transport VPN (VPN 0), which allows traffic to exit directly to the Internet through the NAT- enabled interface in VPN 0.

<https://www.cisco.com/c/dam/en/us/td/docs/solutions/CVD/SDWAN/sdwan-dia-deploy-2020aug.pdf>

NEW QUESTION 84

Which two metrics must a cloud Edge router use to pick the optimal path for a SaaS application reachable via a gateway site? (Choose two.)

- A. HTTP loss and latency metrics to the SaaS application
- B. ICMP loss and latency metrics to the SaaS application
- C. BFD loss and latency metrics to the gateway site
- D. BFD loss and latency metrics to the SaaS application
- E. HTTP loss and latency metrics to the gateway site

Answer: AC

Explanation:

-The gateway vEdge uses HTTP to obtain SaaS application performance information - The client vEdge will use BFD over the IPsec tunnel to the gateway site to obtain client>gateway path performance information

<https://www.cisco.com/c/dam/en/us/td/docs/solutions/CVD/SDWAN/CVD-SD-WAN-Cloud-onRamp-for-SaaS>

NEW QUESTION 86

What is the default value for the number of paths advertised per prefix in the OMP feature template?

- A. 4
- B. 8

- C. 12
- D. 16

Answer: C

NEW QUESTION 87

Which feature delivers traffic to the Cisco Umbrella SIG cloud from a Cisco SD-WAN domain?

- A. L2TPv3 tunnel
- B. IPsec tunnel
- C. local umbrella agent
- D. source NAT

Answer: B

NEW QUESTION 92

Which protocol detects path status (up/down), measures loss/latency/jitter, and measures the quality of the IPsec tunnel MTU?

- A. OMP
- B. IP-SLA
- C. BFD
- D. DTLS

Answer: C

NEW QUESTION 97

A company deploys a Cisco SD-WAN solution but has an unstable Internet connection. When the link to vSmart comes back up, the WAN Edge router routing table is not refreshed, and some traffic to the destination network is dropped. The headquarters is the hub site, and it continuously adds new sites to the SD-WAN network. An engineer must configure route refresh between WAN Edge and vSmart within 2 minutes. Which configuration meets this requirement?

- ☐ `omp`
`no shutdown`
`graceful-restart`
`timers`
`eor-timer 120`
- ☐ `omp`
`no shutdown`
`no graceful-restart`
- ☐ `omp`
`no shutdown`
`graceful-restart`
`timers`
`holdtime 120`
- ☐ `omp`
`no shutdown`
`graceful-restart`
`timers`
`advertisement-interval 120`

- A. Option A
- B. Option B
- C. Option C
- D. Option D

Answer: A

NEW QUESTION 99

Refer to the exhibit



The network team must configure application-aware routing for the Service VPN 50.0.0.0/16

The SLA must prefer MPLS for video traffic but the remaining traffic must use a public network What must be defined other than applications before the application-aware policy is create?

- A. SLA Class, Site VP
- B. Prefix
- C. Data Prefix, Site VPN TLOC
- D. Application, SLA VP
- E. Prefix
- F. Color, SLA Class, Sue, VPN

Answer: A

NEW QUESTION 102

Which protocol advertises WAN edge routes on the service side?

- A. EIGRP
- B. OSPF
- C. BGP
- D. ISIS

Answer: B

NEW QUESTION 106

Which device information is required on PNP/ZTP to support the zero-touch onboarding process?

- A. interface IP address
- B. system IP address
- C. public DNS entry
- D. serial and chassis numbers

Answer: D

NEW QUESTION 111

Refer to the exhibit.

PEER TYPE	PEER PROTOCOL	PEER SYSTEM	SITE IP	DOMAIN ID	PEER PRIVATE IP	PEER PRIVATE PORT	PEER PUBLIC IP	PUBLIC PORT		CONTROLLER		GROUP STATE
										LOCAL	COLOR	
vbond	dtls	-	0	0	1.3.25.25	12346	1.3.25.25	12346	gold	connect		0
vbond	dtls	-	0	0	1.3.25.25	12346	1.3.25.25	12346	silver	connect		0

An engineer is troubleshooting a control connection Issue. What does "connect" mean in this how control connections output?

- A. Control connection is down
- B. Control connection is connected
- C. Control connection attempt is in progress
- D. Control connection is up

Answer: C

NEW QUESTION 116

What prohibits deleting a VNF image from the software repository?

- A. if the image is stored by vManage
- B. if the image is referenced by a service chain
- C. if the image is uploaded by a WAN Edge device
- D. if the image is included in a configured policy

Answer: D

NEW QUESTION 118

What is a requirement for a WAN Edge to reach vManage, vBond, and vSmart controllers in a data center?

- A. IGP
- B. QoS
- C. TLS
- D. OMP

Answer: A

Explanation:

<https://www.cisco.com/c/dam/en/us/td/docs/solutions/CVD/SDWAN/sdwan-wan-edge-onboarding-deploy-guid>

NEW QUESTION 122

Refer to the exhibit

```
vManage#show control local-properties
personality                vmanage
sp-organization-name       Cisco
organization-name          Cisco
system-ip                  10.1.1.10
root-ca-chain-status       Installed
certificate-status          Installed
```

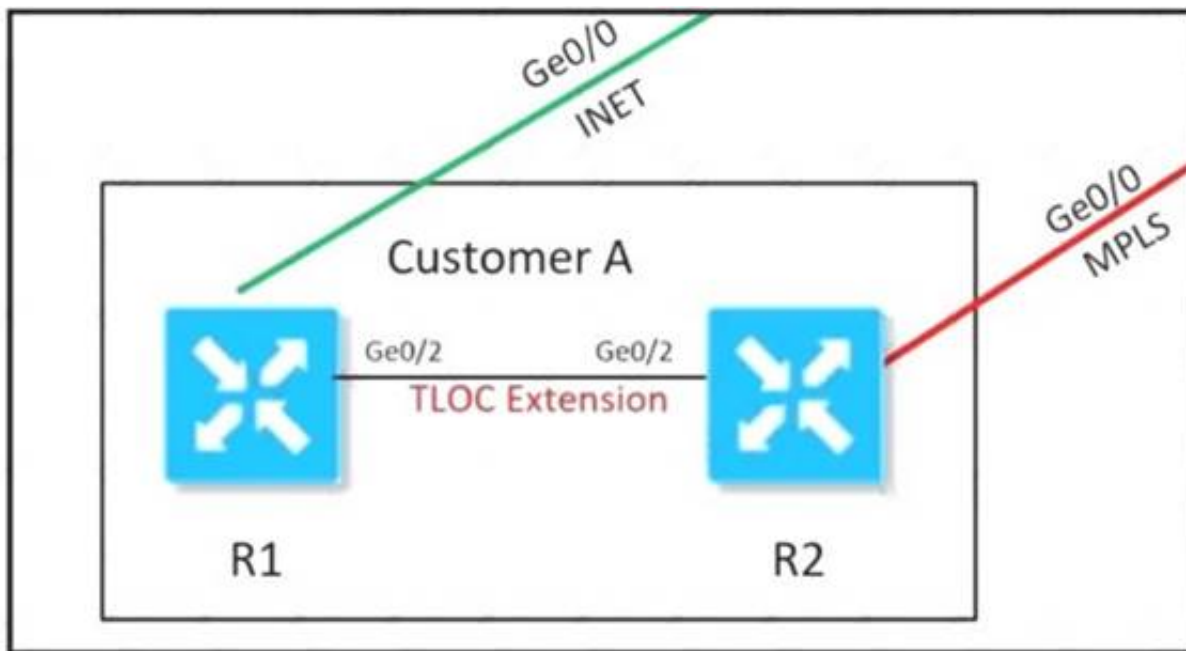
A vBond controller was added to the controller list with the same Enterprise Root CA certificate as vManage. The two controllers can reach each other via VPNO and share the same organization name, but the control connection is not initiated- Which action resolves the issue?

- A. Synchronize the WAN Edge list on vManage with controllers.
- B. Configure NTP on both controllers to establish a connection.
- C. Configure a valid system IP on the vBond controller.
- D. Configure a valid vBond IP on vManage.

Answer: D

NEW QUESTION 123

Refer to the exhibit.



An MPLS connection on R2 must extend to R1 Users behind R1 must have dual connectivity for data traffic Which configuration provides R1 control connectivity over the MPLS connection?

A)

```
R1
interface ge0/2
ip address 34.34.34.1/30
tloc-extension ge0/1
tunnel-interface
color mpls
```

```
R2
interface ge0/2
ip address 34.34.34.2/30
tloc-extension ge0/0
tunnel-interface
color public-internet
```

B)

```
R1
interface ge0/2
ip address 34.34.34.1/30
tloc-extension ge0/1
```

```
R2
interface ge0/0
ip address 34.34.34.2/30
tunnel-interface
color mpls
```

C)

```
vpn 0
router
ospf
 redistribute omp route-policy OSPF_Route_Policy
 area 0
 interface ge0/2
 exit
lists
prefix-list W2_Loopback
ip-prefix 10.10.10.5/32
!
route-policy OSPF_Route_Policy
sequence 1
match
 address W2_Loopback
!
action accept
set
 metric 100
 metric-type type2
```

D)

```
vpn 10
name "**** Service VPN 10 ****"
router
ospf
 redistribute omp route-policy OSPF_Route_Policy
 area 0
 interface ge0/2
 exit
lists
prefix-list W2_Loopback
ip-prefix 10.10.10.5/32
!
route-policy OSPF_Route_Policy
sequence 1
match
 address W2_Loopback
!
action accept
```

- A. Option A
- B. Option B
- C. Option C
- D. Option D

Answer: D

NEW QUESTION 124

An engineer is configuring the branch office with a 172.16.0.0/16 subnet to use DIA for Internet traffic. All other traffic must flow to the central site or branches using the MPLS circuit Which configuration meets the requirement?

A)

```
data-policy SDW_DIA
vpn-list VPN172
sequence 1
match
source-ip 172.16.0.0/16
destination-ip 172.16.0.0/16
!
sequence 2
match
source-data-prefix-list DIA
action accept
nat use-vpn 0
!
default-action accept
```

B)

```
data-policy SDW_DIA
vpn-list VPN172
sequence 1
match
source-ip 172.16.0.0/16
action accept
!
sequence 2
match
source-data-prefix-list DIA
action accept
nat use-vpn 0
!
default-action accept
```

C)

```
data-policy SDW_DIA
vpn-list VPN172
sequence 1
match
source-ip 172.16.0.0/16
destination-ip 172.16.0.0/16
action accept
!
sequence 2
match
source-data-prefix-list DIA
action accept
nat use-vpn 0
!
default-action accept
```

D)

```
data-policy SDW_DIA
vpn-list VPN172
sequence 1
match
source-ip 172.16.0.0/16
destination-ip 172.16.0.0/16
!
sequence 2
match
source-data-prefix-list DIA
action accept
!
default-action accept
```

- A. Option A
- B. Option B
- C. Option C
- D. Option D

Answer: C

NEW QUESTION 127

A bank is looking for improved customer experience for applications and reduce overhead related to compliance and security. Which key feature or features of the Cisco SD-WAN solution will help the bank to achieve their goals?

- A. Integration with PaaS providers to offer the best possible application experience
- B. QoS including application prioritization and meeting critical applications SLA for selecting optimal path.
- C. implementation of a modern age core banking system
- D. implementation of BGP across the enterprise routing for selecting optimal path

Answer:

B

Explanation:

<https://www.cisco.com/c/dam/en/us/solutions/collateral/enterprise-networks/sd-wan/nb-06-cisco-sd-wan-ebook->

NEW QUESTION 129

Refer to the exhibit

Controller Type	Hostname	System IP	Expiration Date	uuid	Operation Status	Site ID	Certificate Serial
vBond	vBond	10.1.1.103	14 Jun 2021 3:49:50 PM +04	f1d00	Installed	1	615DBF69000000000005
vSmart	-	-	-	12aa1...	CSR Generated	-	No certificate installed
vManage	vManage1	10.1.1.101	14 Jun 2021 2:17:34 PM +04	ca64f8...	vBond Updated	1	616996B3060000000002

vManage and vBond have an issue establishing a connection to vSmart Which two actions does the administrator take to fix the issue? (Choose two)
 Install the certificate received from the certificate server.

- A. Manually resync vManage and vBond
- B. Reconfigure the vSmart from CLI with the proper Hostname & System IP
- C. Delete and re-add vSmart Click Generate and validate CSR
- D. Request a certificate from the certificate server based on the CSR for the vSmart

Answer: CD

NEW QUESTION 132

When redistribution is configured between OMP and BGP at two Data Center sites that have Direct Connection interlink, which step avoids learning the same routes on WAN Edge routers of the DCs from LAN?

- A. Define different VRFs on both DCs
- B. Set same overlay AS on both DC WAN Edge routers
- C. Set down-bit on Edge routers on DC1
- D. Set OMP admin distance lower than BGP admin distance

Answer: B

Explanation:

Typically, there are more than one datacenters for HA/redundancy requirements. After successful migration of the first datacenter, migrate the second datacenter in a similar method as explained in this section. Note that a routing loop can occur if there is a backdoor link between the datacenter sites and route advertisement is configured between the two datacenters. To avoid the loop, any of the three methods explained below can be used:

1. Use the same Autonomous System Numbers (ASN) on edge routers of the two datacenters. Because of the same ASN, the AS-PATH attribute will avoid learning the same prefixes on the edge routers that are advertised by the other datacenter towards the LAN side.

2. Use overlay-AS to insert Overlay Management Protocol (OMP) AS number when redistributing the routes from OMP into LAN side towards DC LAN. Configure all DC SD-WAN edge routers with the same overlay-as. This allows the edges to filter the routes advertised by the other DCs edge devices towards the LAN side and prevents redistributing the same routes back into OMP.

3. Use tags or communities to mark the prefixes at one datacenter when redistributing to DC LAN and filter on the edge of the other datacenter when learning advertisements from the LAN side.

NEW QUESTION 137

Refer to the exhibit.

LOCAL	PEER REMOTE	PEER REPEAT	PEER SYSTEM IP	SITE	DOMAIN	PEER PRIVATE	PEER PUBLIC	PEER PUBLIC
INSTANCE TYPE	REMOTE COLOR	PROTOCOL STATE	SYSTEM IP ERROR	ID ERROR	ID COUNT	PRIVATE IF DOWNTIME	PORT	PUBLIC IF PORT
0 default	vsmart	tie trying	1.1.1.3 DCONFAIL	100 NOERR	1 10001	100.1.1.3 2020-01-01T10:01:20+0000	23456	100.1.1.3 23456

The control connection is failing. Which action resolves the issue?

- A. import vSmart in vManager
- B. Validate the certificates authenticity on vSmart
- C. Upload the WAN Edge list on vManage.

D. Restore the reachability to the vSmart

Answer: D

Explanation:

<https://www.cisco.com/c/en/us/support/docs/routers/sd-wan/214509-troubleshoot-control-connections.html>

NEW QUESTION 138

What is an advantage of using auto mode versus static mode of power allocation when an access point is connected to a PoE switch port?

- A. It detects the device is a powered device
- B. All four pairs of the cable are used
- C. Power policing is enabled at the same time
- D. The default level is used for the access point

Answer: D

Explanation:

. Use the **auto** setting on any PoE port. The **auto** mode is the default setting.

https://www.cisco.com/en/US/docs/switches/lan/catalyst3850/software/release/3.2_0_se/multibook/configuration

NEW QUESTION 139


How must the application-aware enterprise firewall policies be applied within the same WAN Edge router?

- A. within and between zones
- B. between two VPN tunnels
- C. within zone pair
- D. between two VRFs

Answer: C

NEW QUESTION 142

An engineer must configure two branch WAN Edge devices where an Internet connection is available and the controllers are in the headquarters. The requirement is to have IPsec VPN tunnels established between the same colors. Which configuration meets the requirement on both WAN Edge devices?

 WAN Edge 1

vpn 0

interface ge0/0


ip address 10.0.0.1/24

ipv6 dhcp-client

tunnel-interface

color biz-internet restrict

encapsulation ipsec

 WAN Edge 2

vpn 0

interface ge0/0


ip address 10.0.0.2/24

ipv6 dhcp-client

tunnel-interface

color default

encapsulation ipsec

 WAN Edge 1

vpn 0

interface ge0/0


ip address 10.0.0.1/24

ipv6 dhcp-client

tunnel-interface

color default

encapsulation ipsec

 WAN Edge 2

vpn 0

interface ge0/0

ip address 10.0.0.2/24

ipv6 dhcp-client

tunnel-interface

color default

encapsulation ipsec

WAN Edge 1

```
vpn 0
interface ge0/0
ip address 10.0.0.1/24
ipv6 dhcp-client
tunnel-interface
color public-internet restrict
encapsulation ipsec
```

WAN Edge 2

```
vpn 0
interface ge0/0
ip address 10.0.0.2/24
ipv6 dhcp-client
tunnel-interface
color gold restrict
encapsulation ipsec
```

WAN Edge 1

```
vpn 0
interface ge0/0
ip address 10.0.0.1/24
ipv6 dhcp-client
tunnel-interface
color gold restrict
encapsulation ipsec
```

WAN Edge 2

```
vpn 0
interface ge0/0
ip address 10.0.0.2/24
ipv6 dhcp-client
tunnel-interface
color gold restrict
encapsulation ipsec
```

- A. Option A
- B. Option B
- C. Option C
- D. Option D

Answer: D

NEW QUESTION 144

An engineer must avoid routing loops on the SD-WAN fabric for routes advertised between data center sites Which BGP loop prevention attribute must be configured on the routers to meet this requirement?

- A. same OMP overlay-as on WAN Edge routers of all data centers
- B. static routing on al WAN Edge routers instead of BGP
- C. same BGP AS between all WAN Edge routers and CE routers
- D. same BGP AS between all CE and PE routers

Answer: A

NEW QUESTION 147

Which TCP Optimization feature is used by WAN Edge to prevent unnecessary retransmissions and large initial TCP window sizes to maximize throughput and achieve a better quality?

- A. SEQ
- B. SYN
- C. RTT
- D. SACK

Answer: D

Explanation:

TCP Optimization

The Cisco SD-WAN TCP Optimization feature uses **TCP Selective Acknowledgement (SACK)** to prevent unnecessary retransmissions and large initial TCP window sizes in order to maximize throughput and achieve a better quality of experience.

NEW QUESTION 150

Refer to exhibit.

PEER	PEER	PEER	PEER	SITE	DOMAIN									
INSTANCE	TYPE	PRIVATE	PEER	SYSTEM	PUBLIC	ID	ID	PRIVATE	LOCAL	REMOTE	REPEAT	REMOTE		
COLOR	STATE	PROTOCOL	ERROR	IP	IP	COUNT	DOWNTIME	IF	PORT	IP	PORT	IP		
0	Wood	811F	0.0.0.0	0	0	0	0	192.168.0.231	12345	192.168.0.231	12345	default	168	
p_down	CTRLFJHF	NOTED	9	2019-04-01T19:04:32+0200										

An engineer is troubleshooting tear down of control connections even though a valid Certificate Serial Number is entered Which two actions resolve the Issue? (Choose two)

- A. Enter a valid serial number on the controllers for a given device
- B. Remove the duplicate IP in the network.
- C. Enter a valid product ID (model) on the PNP portal
- D. Match the serial number file between the controllers
- E. Restore network reachability for the controller

Answer: CD

Explanation:

<https://community.cisco.com/t5/networking-documents/sd-wan-routers-troubleshoot-control-connections/ta-p/38>

NEW QUESTION 153

A network administrator is configuring an application-aware firewall between inside zones to an outside zone on a WAN edge router using vManage GUI. What kind of Inspection is performed when the "inspect" action is used?

- A. stateful inspection for TCP and UDP
- B. stateful inspection for TCP and stateless inspection of UDP
- C. IPS inspection for TCP and-Layer 4 inspection for UDP
- D. Layer 7 inspection for TCP and Layer 4 inspection for UDP

Answer: A

Explanation:

Cisco's Enterprise Firewall with Application Awareness uses a flexible and easily understood zone-based model for traffic inspection, compared to the older interface-based model.

A firewall policy is a type of localized security policy that allows **stateful inspection** of TCP, UDP, and ICMP data traffic flows.

NEW QUESTION 157

Which two services are critical for zero touch provisioning on-boarding? (Choose two)

- A. SNMP
- B. DNS
- C. DHCP
- D. AAA
- E. EMAIL

Answer: BC

NEW QUESTION 162

Which plane builds and maintains the network topology and makes decisions on traffic flows?

- A. orchestration
- B. management
- C. control
- D. data

Answer: C

NEW QUESTION 164

Which policy blocks TLOCs from remotes and allows TLOCs from the data center to form hub-and-spoke peering?

- A. localized control policy
- B. localized data policy
- C. centralized data policy
- D. centralized control policy

Answer: C

Explanation:

Centralized Policy

Centralized policy refers to policy provisioned on Cisco vSmart Controllers, which are the centralized controllers in the Cisco SD-WAN overlay network. Centralized policy comprises two components:

- Control policy, which affects the overlay network-wide routing of traffic
- Data policy, which affects the data traffic flow throughout the VPN segments in the network

NEW QUESTION 166

An engineer is adding a tenant with location JD 306432373 in vManage. What is the maximum number of alphanumeric characters that are accepted in the tenant name field?

- A. 64
- B. 128
- C. 256
- D. 8

Answer: B

Explanation:

In the Add Tenant window:

1. Enter a name for the tenant. It can be up to 128 characters and can contain only alphanumeric characters.

NEW QUESTION 169

Which device in the SD- WAN solution receives and categorizes event reports, and generates alarms?

- A. WAN Edge routers
- B. vSmart controllers
- C. vManage NMS
- D. vBond controllers

Answer: C

Explanation:

https://sdwan-docs.cisco.com/Product_Documentation/vManage_Help/Release_17.1/vManage_NMS_Product_

NEW QUESTION 174

Which platforms are managed by a single vManage dashboard?

- A. ISR4351, ASR1002HX, vEdge2000, vEdge Cloud
- B. ISR4321, ASR1001, Nexus, ENCS
- C. ISR4321, ASR1001, ENCS, ISRv
- D. ISR4351, ASR1009, vEdge2000, CSR1000v

Answer: C

NEW QUESTION 178

An engineer is troubleshooting a vEdge router and identifies a “DCONFFAIL – DTLS connection failure” message. What is the problem?

- A. certificate mismatch
- B. organization mismatch
- C. memory issue
- D. connectivity issue

Answer: D

Explanation:

<https://community.cisco.com/t5/networking-documents/sd-wan-routers-troubleshoot-control-connections/ta-p/38>

NEW QUESTION 183

An engineer is configuring a data policy for packets that must be captured through the policy. Which command accomplishes this task?

- A. policy > data-policy > vpn-list > sequence > default-action > drop
- B. policy > data-policy > vpn-list > sequence > action
- C. policy > data-policy > vpn-list > sequence > default-action > accept
- D. policy > data-policy > vpn-list > sequence > match

Answer: B

Explanation:

<https://www.cisco.com/c/dam/en/us/td/docs/routers/sdwan/configuration/config-18-4.pdf#page=357>

NEW QUESTION 186

A customer has MPLS and Internet as the TLOC colors. An engineer must configure controllers with the Internet and not with MPLS. Which configuration achieves this requirement on vManage?

A)

```
vpn 0
interface eth1
ip address 10.50.0.1/24
tunnel-interface
color mpls
```

B)

```
vpn 0
interface eth1
ip address 10.50.0.1/24
tunnel-interface
color public-internet
```

C)

```
vpn 0
interface eth1
ip address 10.50.0.1/24
tunnel-interface
color biz-internet
```

D)

```
vpn 0
interface eth1
ip address 10.50.0.1/24
tunnel-interface
color default
```

- A. Option A
- B. Option B
- C. Option C
- D. Option D

Answer: B

NEW QUESTION 189

What must an engineer consider when deploying an SD-WAN on-premises architecture based on ESXi hypervisor?

- A. Cisco must provision the backup and snapshots platform for the SD-WAN architecture
- B. The managed service provider must provision controllers with their appropriate certificates
- C. The IT team is required to provision the SD-WAN controllers and is responsible for backups and disaster recovery implementation
- D. The IT team will be given access by Cisco to a vManage for configuration templates and policies

Answer: C

NEW QUESTION 190

Where on vManage does an engineer find the details of control node failure?

- A. Alarms
- B. Events
- C. Audit log
- D. Network

Answer: A

Explanation:

<https://www.cisco.com/c/en/us/td/docs/routers/sdwan/vmanage/How-Tos/vmanage-howto-book/m-troubleshoot>

NEW QUESTION 195

How is TLOC defined?

- A. It is represented by a unique identifier to specify a site in an SD-WAN architecture.
- B. It specifies a Cisco SD-WAN overlay in a multi-tenant vSMART deployment.
- C. It is a unique collection of GRE or IPsec encapsulation, link color, and system IP address.
- D. It is represented by a group of QoS policies applied to a WAN Edge router.

Answer: C

NEW QUESTION 200

Refer to the exhibit.


```

policy
  policer ccnp
    rate 1000000
    burst 15000
    exceed drop
  !
access-list acl-guest
  sequence 1
  match
    source-ip 172.16.10.0/24
    destination-ip 172.16.20.0/24
    destination-port 20
    protocol 6
  !
  action accept
    policer ccnp
  !
!
default-action drop

```

Which QoS treatment results from this configuration after the access list acl-guest is applied inbound on the vpn1 interface?

- A. A UDP packet sourcing from 172.16.20.1 and destined to 172.16.10.1 is accepted
- B. A TCP packet sourcing from 172.16.10.1 and destined to 172.16.20.1 is dropped
- C. A UDP packet sourcing from 172.16.10.1 and destined to 172.16.20.1 is dropped.
- D. A TCP packet sourcing from 172.16.20.1 and destined to 172.16.10.1 is accepted

Answer: C

NEW QUESTION 202

A customer is receiving routes via OMP from vSmart controller for a specific VPN. The customer must provide access to the W2 loopback received via OMP to the OSPF neighbor on the service-side VPN, which configuration fulfils these requirements?

```

vpn 0
router
  ospf
    redistribute omp route-policy OSPF_Route_Policy
  area 0
    interface ge0/2
    exit
  lists
    prefix-list W2_Loopback
    ip-prefix 10.10.10.5/24
  !
  route-policy OSPF_Route_Policy
  sequence 1
  match
    address W2_Loopback
  !
  default action accept
  set
    metric 100
    metric-type type1

```

```

vpn 0
router
  ospf
    redistribute omp route-policy OSPF_Route_Policy
  area 0
    interface ge0/2
    exit
  lists
    prefix-list W2_Loopback
    ip-prefix 10.10.10.5/32
  !
  route-policy OSPF_Route_Policy
  sequence 1
  match
    address W2_Loopback
  !
  default action accept
  set
    metric 100
    metric-type type1

```

```
vpn 0
router
ospf
 redistribute omp route-policy OSPF_Route_Policy
 area 0
 interface ge0/2
 exit
lists
 prefix-list W2_Loopback
 ip-prefix 10.10.10.5/32
!
 route-policy OSPF_Route_Policy
 sequence 1
 match
  address W2_Loopback
!
 action accept
 set
  metric 100
 metric-type type2
```

```
vpn 10
name "" Service VPN 10 ""
router
ospf
 redistribute omp route-policy OSPF_Route_Policy
 area 0
 interface ge0/2
 exit
lists
 prefix-list W2_Loopback
 ip-prefix 10.10.10.5/32
!
 route-policy OSPF_Route_Policy
 sequence 1
 match
  address W2_Loopback
```

```
ospf
 redistribute omp route-policy OSPF_Route_Policy
 area 0
 interface ge0/2
 exit
lists
 prefix-list W2_Loopback
 ip-prefix 10.10.10.5/32
!
 route-policy OSPF_Route_Policy
 sequence 1
 match
  address W2_Loopback
!
 action accept
 set
  metric 100
 metric-type type1
```

- A. Option A
- B. Option B
- C. Option C
- D. Option D
- E. Option E

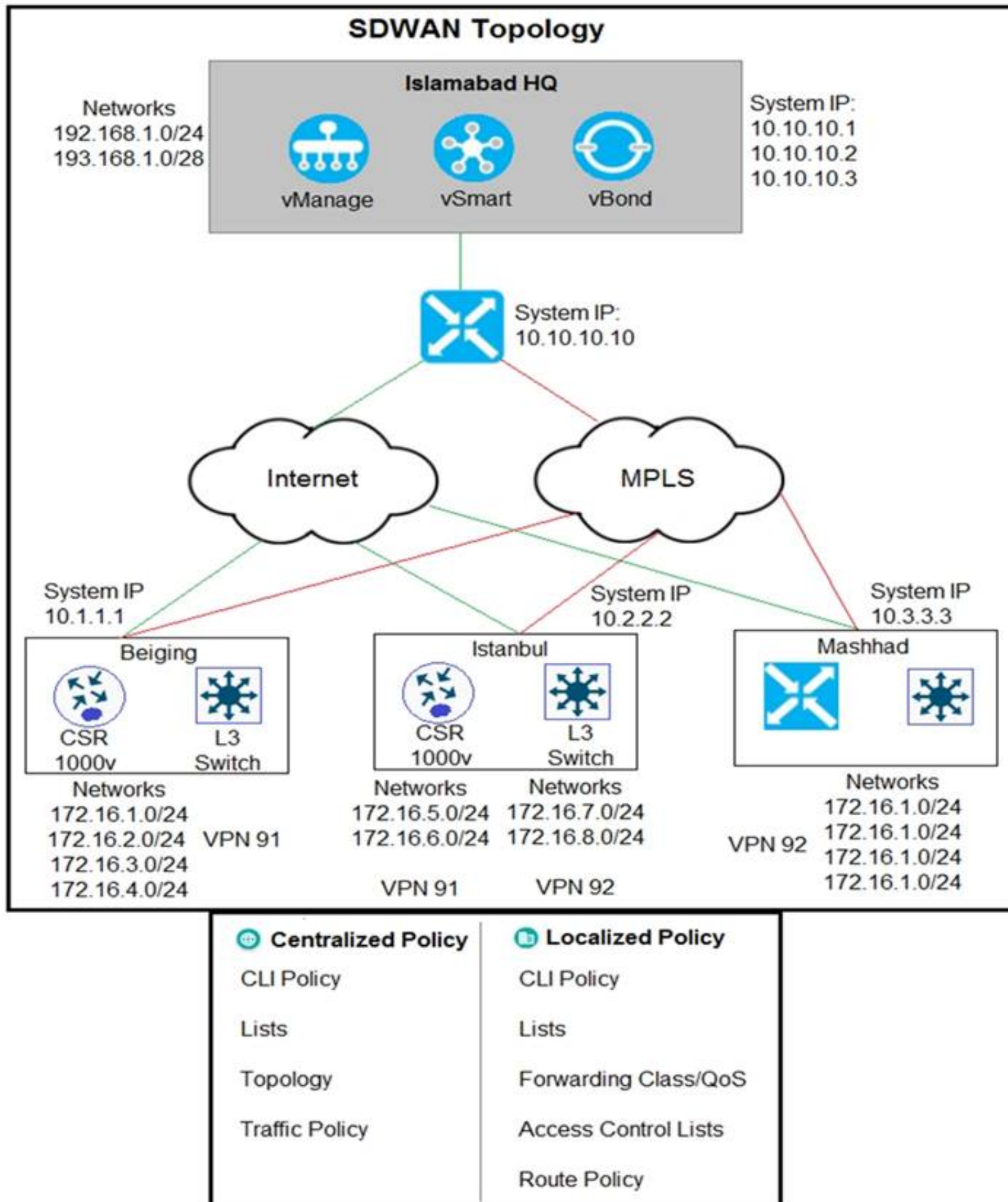
Answer: D

Explanation:

Answer must start with VPN 10(service side) & should have metric-type 1 and not with VPN 0 (transport side)

NEW QUESTION 205

Refer to the exhibit



The Cisco SD-WAN network is configured with a default full-mesh topology. Islamabad HQ and Islamabad WAN Edges must be used as the hub sites. Hub sites MPLS TLOC must be preferred when forwarding FTP traffic based on a configured SLA class list. Which policy configuration does the network engineer use to call the SLA class and set the preferred color to MPLS?

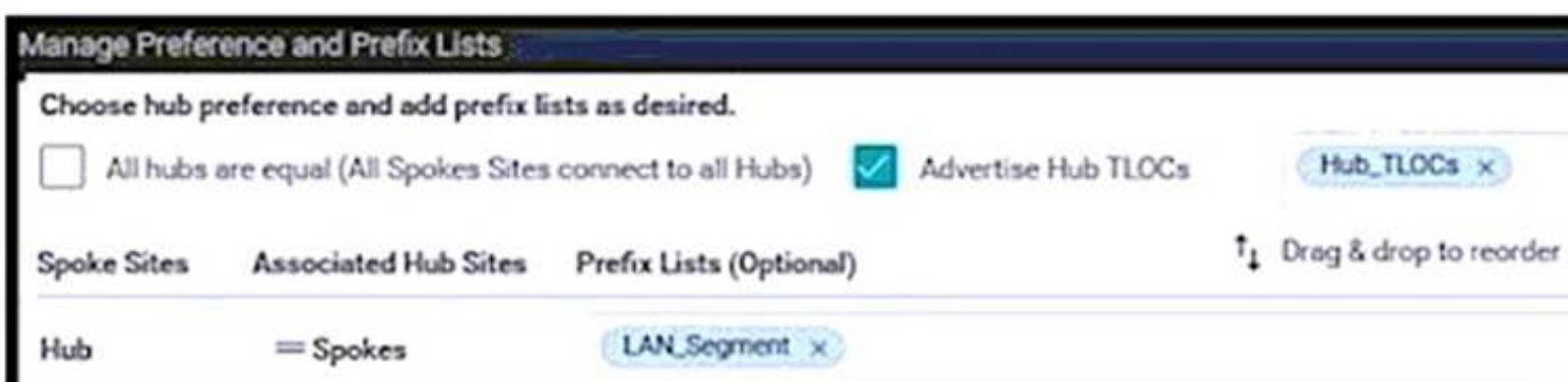
- A. Localized Policy, Route Policy
- B. Centralized Policy, Traffic Policy
- C. Localized Policy, Forwarding Class
- D. Centralized Policy Topology

Answer: B

NEW QUESTION 209

After deploying Cisco SD-WAN the company realized that by default, all sites built direct IPsec VPN tunnels to each other. In their previous topology all spoke sites used the head office as their next hop for the LAN segment that belongs to network 40.0.0.0/16. The company wants to deploy its previous policy, which allows the 40.0.0.0/16 network that originates at the hub to advertise to the spokes. Which configuration meets the requirement?

A)



B)

Manage Preference and Prefix Lists

Choose hub preference and add prefix lists as desired.

☒ All hubs are equal (All Spokes Sites connect to all Hubs)

☐ Advertise Hub TLOCs

Spoke Sites	Associated Hub Sites	Prefix Lists (Optional)
Spokes	Hub	LAN_Segment x

C)

Manage Preference and Prefix Lists

Choose hub preference and add prefix lists as desired.

☐ All hubs are equal (All Spokes Sites connect to all Hubs)

☒ Advertise Hub TLOCs

Hub_TLOCs x

Spoke Sites	Associated Hub Sites	Prefix Lists (Optional)	⬆️ Drag & drop to reorder
Spokes	Hub	LAN_Segment x	

D)

Choose hub preference and add prefix lists as desired.

☐ All hubs are equal (All Spokes Sites connect to all Hubs)

☒ Advertise Hub TLOCs

Hub_TLOCs x

Spoke Sites	Associated Hub Sites	Prefix Lists (Optional)	⬆️ Drag & drop to reorder
Spokes	Hub	Select one or more prefix lists	

- A. Option A
- B. Option B
- C. Option C
- D. Option D

Answer: D

NEW QUESTION 210

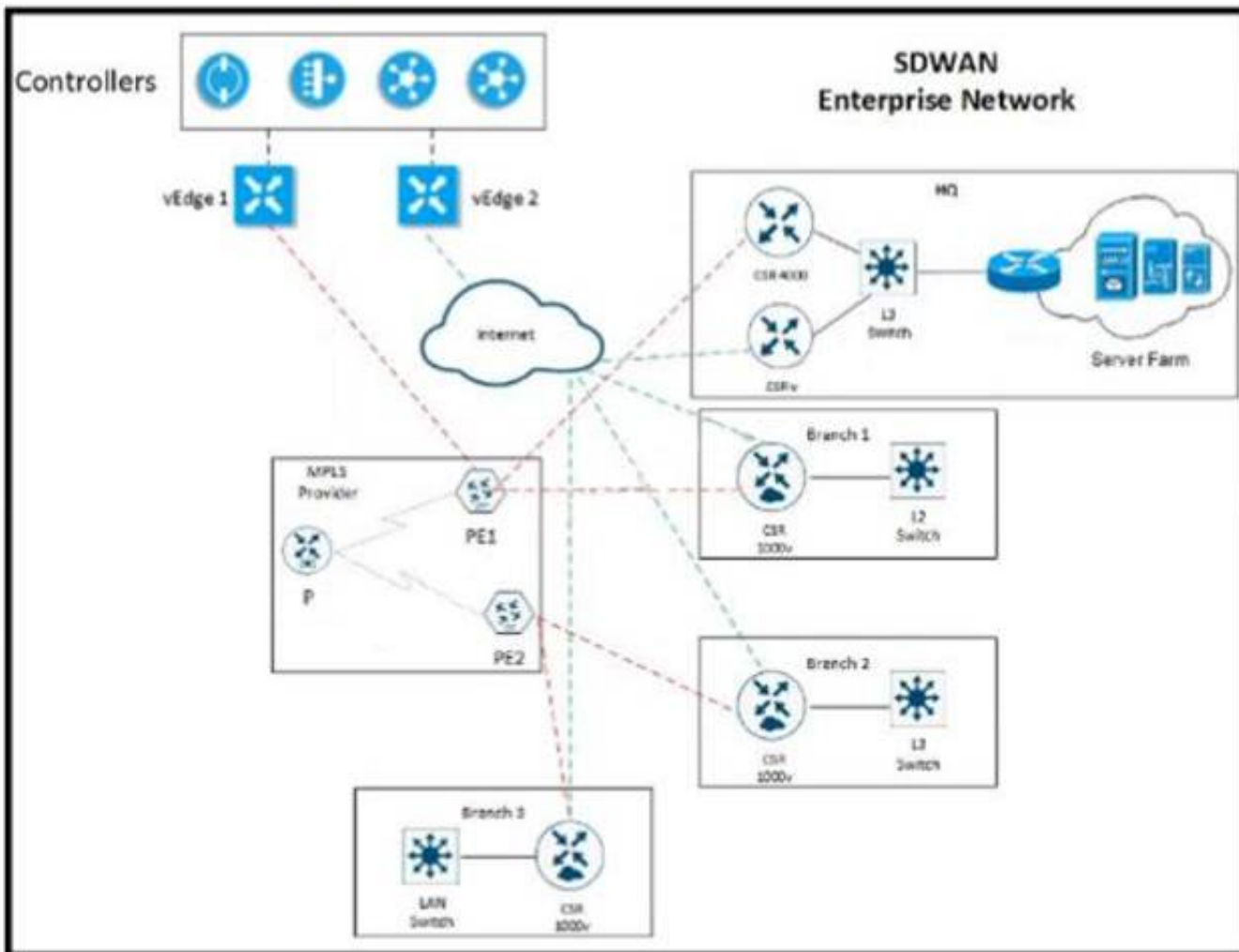
Which command on a WAN Edge device displays the information about the colors present in the fabric that are learned from vSmart via OMP?

- A. show omp tlocs
- B. show omp sessions
- C. show omp peers
- D. show omp route

Answer: A

NEW QUESTION 213

Refer to the exhibit



The network team must configure EIGRP peering at HQ with devices in the service VPN connected to WAN Edge CSRv. CSRv is currently configured with

```

viptela-system:system
  device-model vedge-cloud
  host-name CSRv
  location CA
  system-ip 10.4.4.4
  domain-id 1
  site-id 1
  organization-name ABC
  clock timezone US/Newyork
  vbond 10.10.0.1 port 12346
  
```

```

omp
  no shutdown
  graceful-restart
  
```

Which configuration on the WAN Edge meets the requirement?

A)

```

vpn 0
  interface ge0/0
  description "Internet Circuit"
  ip address 209.165.200.229/30
  tunnel-interface
  encapsulation ipsec
  color public-internet
  allow-service all

router
  eigrp
  address-family ipv4-unicast
  maximum-path paths 4
  network 10.0.0.0/28
  redistribute omp

vpn 512
  interface eth0
  shutdown
  
```

B)

```
vpn 0
interface ge0/0
description "**** Internet Circuit ****"
ip address 209.165.200.229/30
tunnel-interface
encapsulation ipsec
color public-internet
allow-service all

router
eigrp
address-family ipv4-unicast
maximum-path paths 4
network 10.0.0.0/28
redistribute omp

vpn 512
interface eth0
shutdown
```

C)

```
vpn 0
interface ge0/0
description "**** Internet Circuit ****"
ip address 209.165.200.229/30
tunnel-interface
encapsulation ipsec
color public-internet
allow-service all

vpn 1
router
eigrp
address-family ipv4-unicast
maximum-path paths 4
network 10.0.0.0/28
redistribute omp

interface ge0/1
ip address 10.0.0.1/28

vpn 512
interface eth0
shutdown
```

D)

```
vpn 0
vpn 1
interface ge0/0
description "**** Internet Circuit ****"
ip address 209.165.200.229/30
tunnel-interface
encapsulation ipsec
color public-internet
allow-service all

router
eigrp
address-family ipv4-unicast
maximum-path paths 4
network 10.0.0.0/28
redistribute omp

interface ge0/1
ip address 10.0.0.1/28

vpn 512
interface eth0
shutdown
```

- A. Option A
- B. Option B
- C. Option C
- D. Option D

Answer: C

NEW QUESTION 218

Which percentage for total memory or total CPU usage for a device is classified as normal in the WAN Edge Health pane?

- A. more than 80 percent usage
- B. less than 70 percent usage
- C. between 70 to 90 percent usage
- D. more than 90 percent usage

Answer: B

NEW QUESTION 222

Which VPN connects the transport-side WAN Edge interface to the underlay/WAN network?

- A. VPN 1

- B. VPN 511
- C. VPN 0
- D. VPN 512

Answer: C

Explanation:

transport network and the transport network itself. The network ports that connect to the underlay network are part of VPN 0, the transport VPN. Getting connectivity to the Service Provider gateway in the transport network usually involves configuring a static default gateway (most

NEW QUESTION 223

What is the main purpose of using TLOC extensions in WAN Edge router configuration?

- A. creates hardware-level transport redundancy at the local site
- B. creates an IPsec tunnel from WAN Edge to vBond Orchestrator
- C. transports control traffic to a redundant vSmart Controller
- D. transports control traffic w remote-site WAN Edge routers

Answer: D

NEW QUESTION 225

Refer to the exhibit.

```
vEdge-Cloud#
vEdge-Cloud#
vEdge-Cloud# vshell
vEdge-Cloud:~$ cd /var/log/
vEdge-Cloud:/var/log$
vEdge-Cloud:/var/log$ ls -l
total 28992
-rw-r--r-- 1 root root 1441700 Nov 22 15:13 auth.log
-rw-r--r-- 1 basic adm 0 Aug 7 15:29 cloud-init.log
drwxr-xr-x 2 root root 4096 Nov 22 14:49 confd
-rw-r--r-- 1 root root 1896486 Nov 22 14:57 kern.log
-rw-r--r-- 1 root root 292292 Aug 9 22:31 lastlog
-rw-r--r-- 1 root root 6197843 Nov 22 15:14 messages
-rw-r--r-- 1 root root 10512141 Aug 30 21:00 messages.1
drwxr-xr-x 2 root root 4096 Nov 22 14:48 pdb
drwxr-xr-x 2 quagga quagga 4096 Aug 7 15:29 quagga
-rw-r--r-- 1 root root 437 Nov 22 14:48 sw_script_active.log
-rw-r--r-- 1 root root 382 Nov 22 14:48 sw_script_previous.log
-rw-r--r-- 1 root root 2004 Nov 22 14:49 sw_script_syncddb.log
-rw----- 1 root root 64064 Nov 22 15:07 tallylog
drwxr-xr-x 2 root root 60 Nov 22 14:48 tmplog
-rw-r--r-- 1 root root 6841506 Nov 22 15:14 vconfd
-rw-r--r-- 1 root root 184602 Aug 7 15:29 vdebug
-rw-r--r-- 1 root root 2479511 Nov 22 15:14 vsyslog
-rwxr-xr-x 1 root utmp 49536 Nov 22 15:07 wtmp
vEdge-Cloud:/var/log$
vEdge-Cloud:/var/log$
```

Which configuration stops Netconf CLI logging on WAN Edge devices during migration?

- ☐ logs
 - audit-disable
 - netconf-disable
- ☐ logs
 - netconf-disable
- ☐ logging
 - disk netconf-disable
- ☒ logging
 - disk
 - audit-disable
 - netconf-disable

- A. Option A
- B. Option B
- C. Option C
- D. Option D

Answer: B

Explanation:

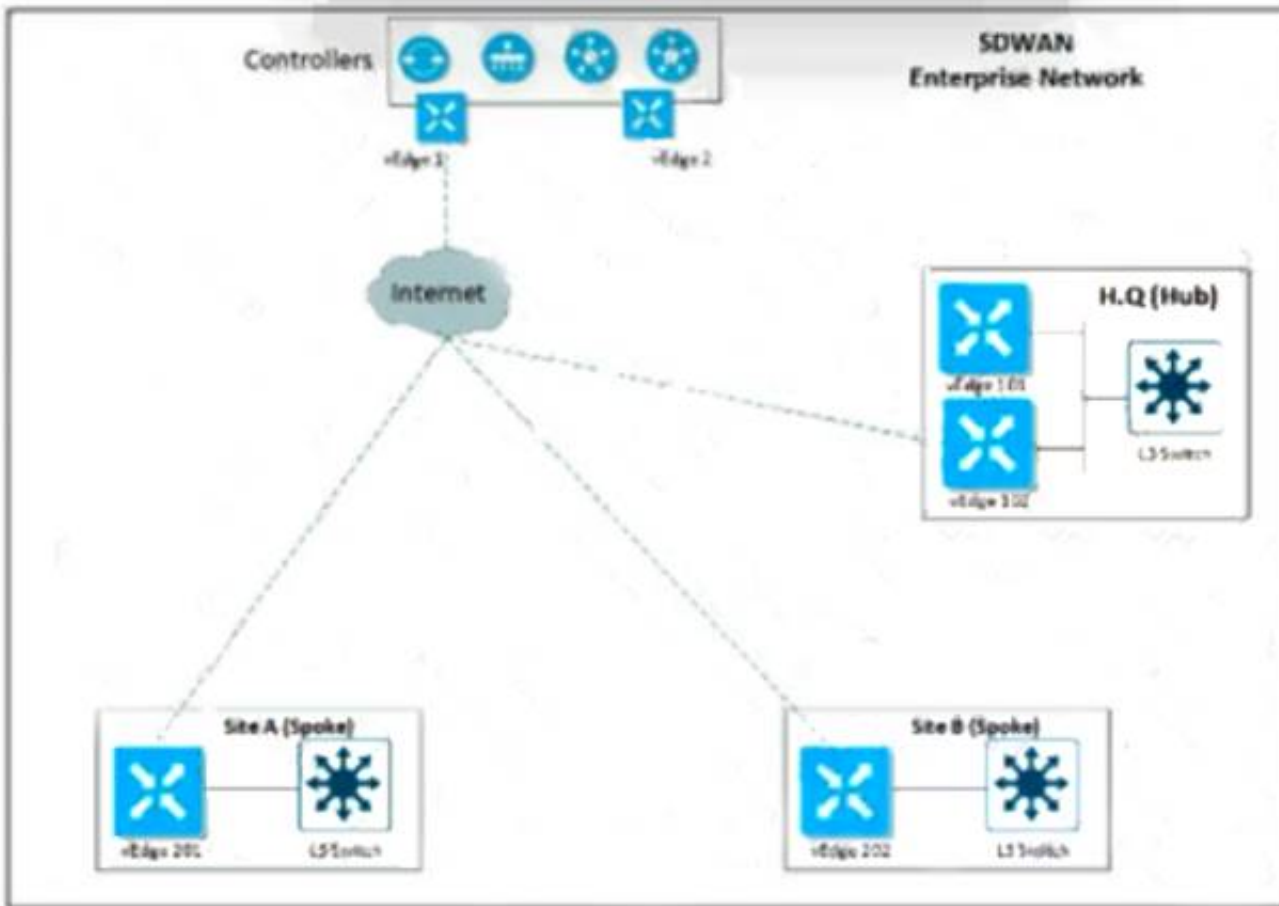
<https://www.cisco.com/c/en/us/td/docs/routers/sdwan/command/sdwan-cr-book/config-cmd.html#wp386725031>

Syslog messages related to AAA authentication and Netconf CLI access and usage are placed in the auth.log and messages files. Each time Cisco vManage logs in to a Cisco vEdge device to retrieve statistics and status information and to push files to the router, the router generates AAA and Netconf log messages. So, over time, these messages can fill the log files. To prevent these messages from filling the log files, you can disable the logging of AAA and Netconf syslog messages:

Device(config)# **system aaa logs**Viptela(config-logs)# **audit-disable**Viptela(config-logs)# **netconf-disable**

NEW QUESTION 228

Refer to the exhibit



An engineer must configure a QoS policy between the hub and site A (spoke) over a standard internet circuit where traffic shaping is adjusted automatically based on available bandwidth. Which configuration meets the requirement?

- ☐ Hub
sdwan
interface GigabitEthernet1
qos-adaptive
period 90
downstream 8000
downstream range 6000 10000
upstream 8000
upstream range 4000 16000
exit
tunnel-interface
encapsulation ipsec weight 1
color public-internet
no last-resort-circuit
vmanage-connection-preference 5
allow-service all
- ☐ Site A (Spoke)
sdwan
interface GigabitEthernet1
qos-adaptive
period 40
downstream 10000
downstream range 8000 12000
upstream 9000
upstream range 5000 16000
exit
tunnel-interface
encapsulation ipsec weight 1
color mpls
no last-resort-circuit
vmanage-connection-preference 5
allow-service all

☐

Hub

sdwan

interface GigabitEthernet1

qos-adaptive

period 90

downstream 8000

downstream range 6000 10000

upstream 8000

upstream range 4000 16000

exit

tunnel-interface

encapsulation ipsec weight 1

color public-Internet

no last-resort-circuit

vmanage-connection-preference 5

allow-service all

☐

Site A (Spoke)

sdwan

interface GigabitEthernet1

qos-adaptive

period 90

downstream 8000

downstream range 6000 10000

upstream 8000

upstream range 4000 16000

exit

tunnel-interface

encapsulation ipsec weight 1

color public-Internet

no last-resort-circuit

vmanage-connection-preference 5

allow-service all

- A. Option A
- B. Option B
- C. Option C
- D. Option D

Answer: D

NEW QUESTION 232

An enterprise is continuously adding new sites to its Cisco SD-WAN network. It must configure any cached routes flushed when OMP peers have lost adjacency
Which configuration allows the cached OMP routes to be flushed after every 24 hours from its routing table?

A)

Basic Configuration

Timers

Advertise

Graceful Restart for OMP

On

Off

Overlay AS Number

24

Graceful Restart Timer (seconds)

43200

Number of Paths Advertised per Prefix

4

ECMP Limit

4

Shutdown

Yes

No

B)

Basic Configuration

Timers

Advertise

Graceful Restart for OMP

On

Off

Overlay AS Number

1

Graceful Restart Timer (seconds)

86400

Number of Paths Advertised per Prefix

3

ECMP Limit

4

Shutdown

Yes

No

C)

Basic Configuration

Timers

Advertise

Graceful Restart for OMP

On

Off

Overlay AS Number

24

Graceful Restart Timer (seconds)

600000

Number of Paths Advertised per Prefix

2

ECMP Limit

2

Shutdown

Yes

No

D)

Basic Configuration

Timers

Advertise

Graceful Restart for OMP

On

Off

Overlay AS Number

24

Graceful Restart Timer (seconds)

43200

Number of Paths Advertised per Prefix

2

ECMP Limit

2

Shutdown

Yes

No

- A. Option A
- B. Option B
- C. Option C
- D. Option D

Answer: B

NEW QUESTION 237

Refer to the exhibit.

```
vEdge-2(config-vpn-0)#interface ge0/2.101
vEdge-2(config-interface)#ip address 10.1.100.0/24
vEdge-2(config-interface)#tloc-extension ge0/0
vEdge-2(config-interface)#mtu 1496
vEdge-2(config-interface)#no shutdown
```

What binding is created using the tloc-extension command?

- A. between ge 0/2.101 of port-type service and ge 0/0 of port-type service
- B. between ge 0/2.101 of port-type transport and ge 0/0 of port-type service
- C. between ge 0/2.101 of port-type service and ge 0/0 of port-type transport

D. between ge 0/2.101 of port-type transport and ge 0/0 of port-type transport

Answer: D

Explanation:

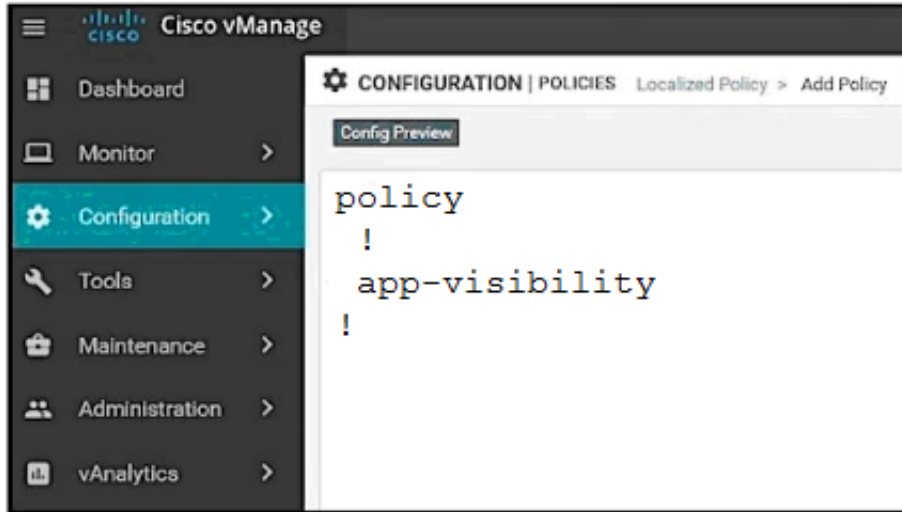
tloc-extension

Bind this interface, which connects to another vEdge router at the same physical site, to the local router's WAN transport interface (on vEdge routers only).

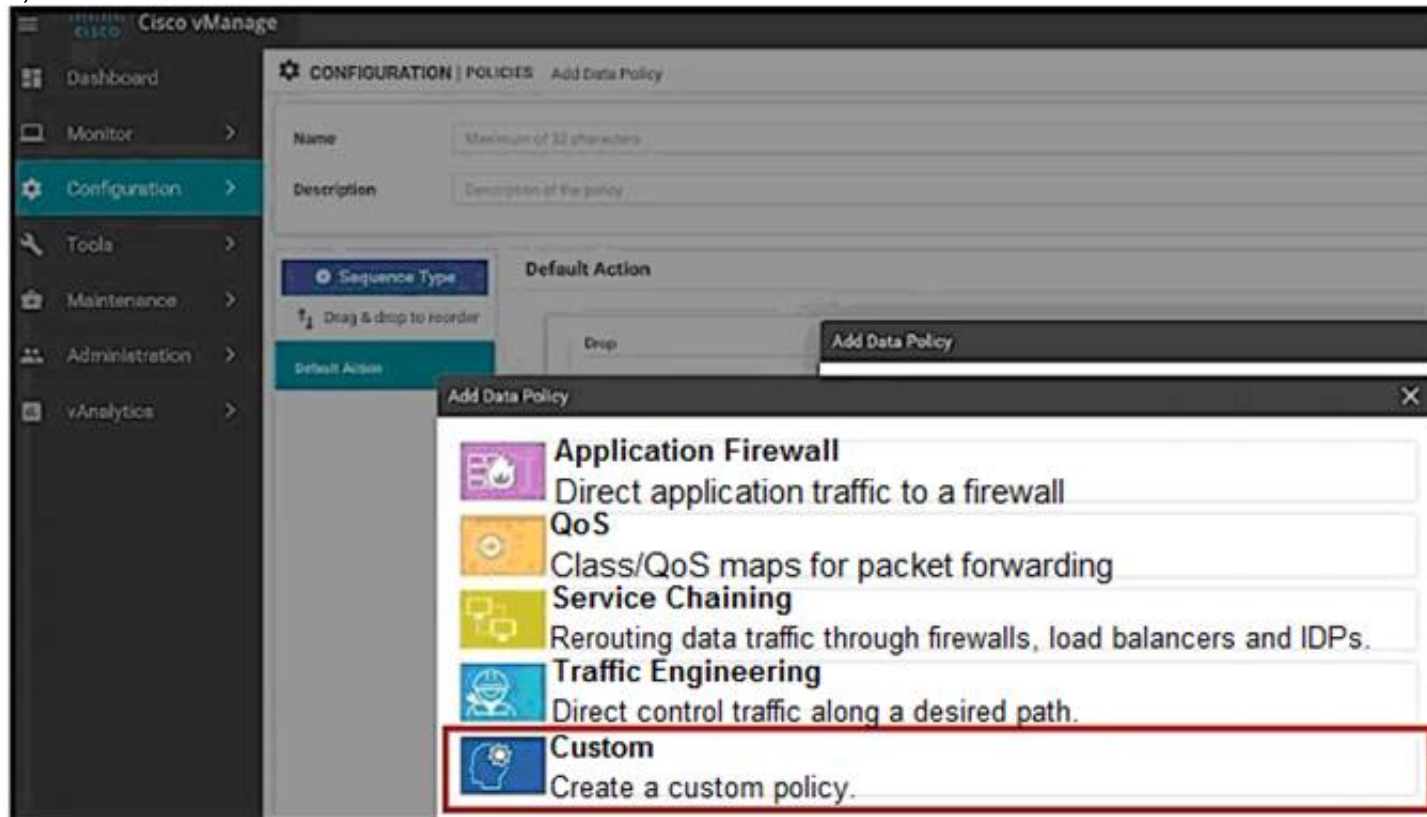
NEW QUESTION 238

An organization wants to discover, monitor, and track the applications running on the WAN Edge device on the LAN Which configuration achieves this goal?

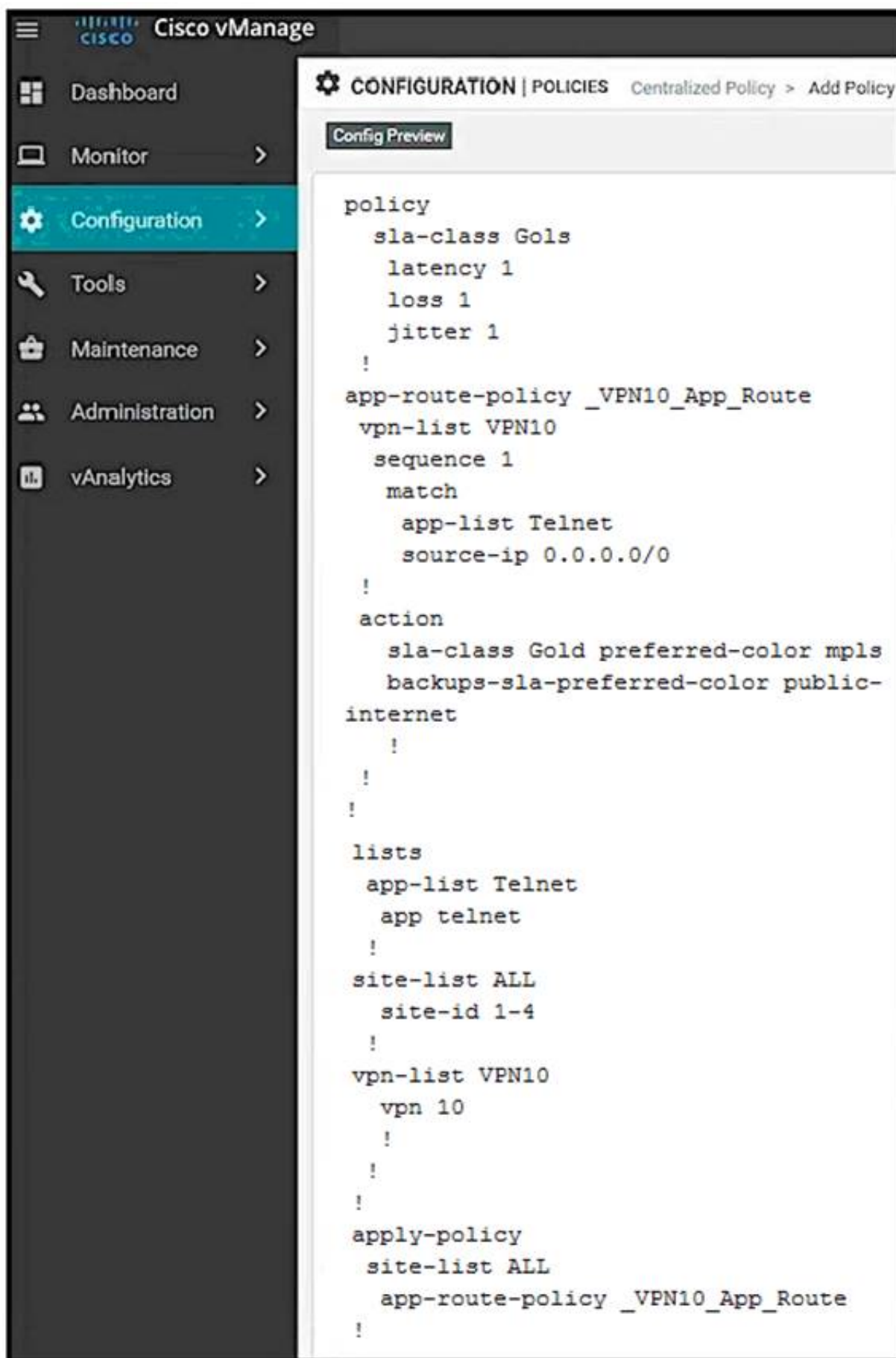
A)



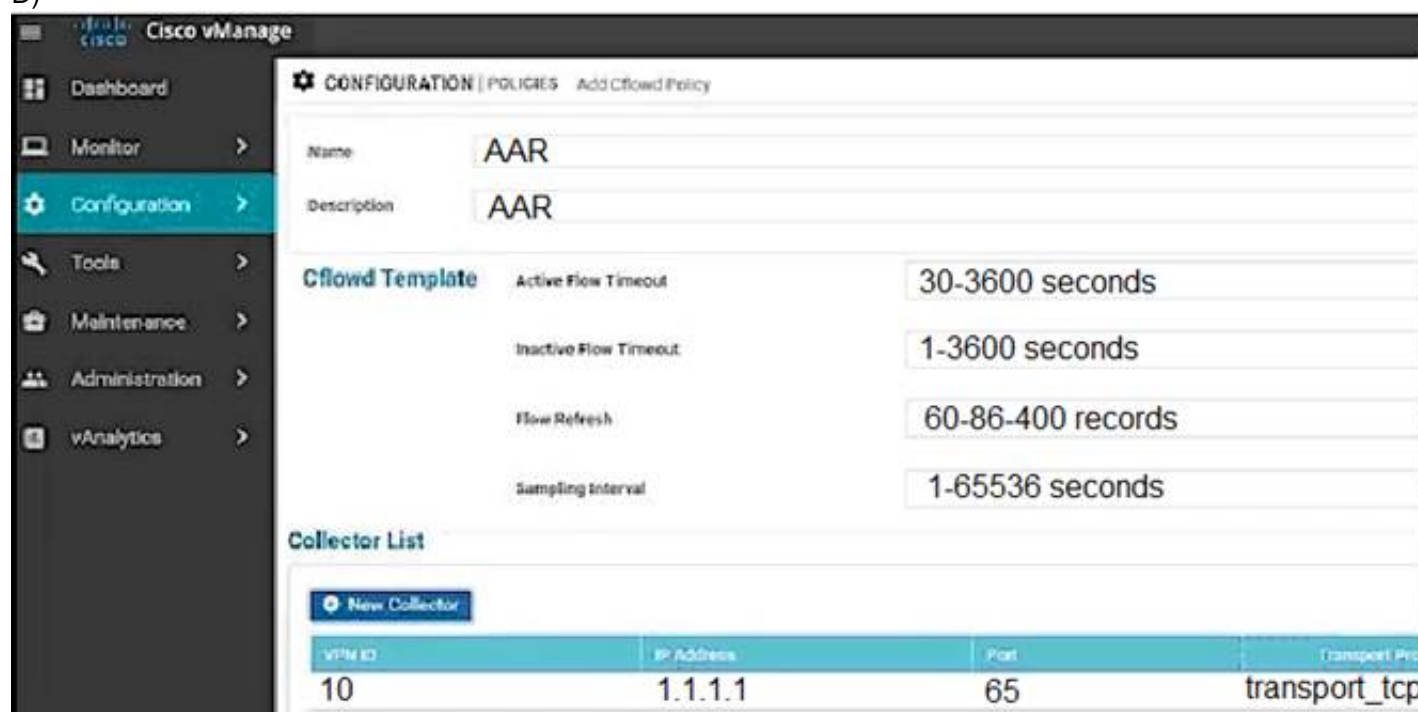
B)



C)



D)



- A. Option A
- B. Option B
- C. Option C
- D. Option D

Answer: D

NEW QUESTION 241

Drag and drop the actions from the left into the correct sequence on the right to create a data policy to direct traffic to the Internet exit.

Apply data policy	Step 1
Enable NAT functionality	Step 2
Create centralized data policy	Step 3
Identify VPN and match criteria	Step 4

- A. Mastered
- B. Not Mastered

Answer: A

Explanation:

Step 1 – Enable NAT Functionality Step 2 – Create centralized data policy
Step 3 – Identify VPN and match criteria Step 4 – Apply data policy

NEW QUESTION 245

Refer to the exhibit

```
vpn 1
service netsvc1 interface ipsec1

from-vsmart data-policy _1_ServiceIsertionIPSec
direction from-service
vpn-list 1
sequence 1
match
destination-ip 1.1.1.1/32
action accept
set
service netsvc1
default-action accept
from-vsmart lists vpn-list 1
vpn 1
```

Which command allows traffic through the IPsec tunnel configured in VPN 0?

- A. service local
- B. service FW address 1.1.1.1
- C. service netsvc1 vpn 1
- D. service netsvc1 address 1.1.1.1

Answer: B

Explanation:

<https://www.cisco.com/c/en/us/td/docs/routers/sdwan/configuration/policies/vedge-20-x/policies-book/service-c>

NEW QUESTION 246

Which protocol runs between the vSmart controllers and WAN Edge routers when the vSmart controller acts like a route reflector?

- A. OMP outside the DTLS/TLS control connection
- B. BGP inside the DTLS/TLS
- C. IPsec inside the DTLS/TLS control connection
- D. OMP inside the DTLS/TLS control connection

Answer: D

NEW QUESTION 249

When a WAN Edge device joins the SD-WAN overlay, which Cisco SD-WAN components orchestrates the connection between the WAN Edge device and a vSmart controller?

- A. vManage
- B. vBond
- C. OMP
- D. APIC-EM

Answer: B

Explanation:

When a vEdge device comes up, how does it automatically discover Cisco vManage and Cisco vSmart Controller and establish connections with them? **It does so with help from Cisco vBond Orchestrator.**

NEW QUESTION 251

Which website allows access to visualize the geography screen from vManager using the internet?

- A. *.opcnstreetmaps.org
- B. *.fullstreetmaps.org
- C. *.callstreelmaps.org
- D. *.globaistreetmaps.org

Answer: A

NEW QUESTION 256

A network administrator is creating an OMP feature template from the vManage GUI to be applied to WAN edge routers. Which configuration attribute will avoid the redistribution of the routes back into the OMP from the LAN side?

- A. configure "Number of Paths Advertised per Prefix"
- B. configure "Overlay AS Number"
- C. configure "Send Backup Paths"
- D. configure "ECMP limit"

Answer: B

Explanation:

If you configure the same **overlay AS number** on multiple vEdge routers in the overlay network, all these routers are considered to be part of the same AS, and as a result, they do not forward any routes that contain the overlay AS number. This mechanism is an additional technique for **preventing BGP routing loops** in the network.

NEW QUESTION 258

Drag and drop the components from the left onto the corresponding Cisco NFV infrastructure Building Blocks on the right. Not all options are used.



- A. Mastered
- B. Not Mastered

Answer: A

Explanation:

Cisco NFV Infrastructure Building Blocks

- **Compute:** Cisco Unified Computing System™ (Cisco UCS®) for a carrier class and reliable compute infrastructure.
- **Storage:** Cisco UCS hardware and CEPH provide reliable storage. The user has the options to introduce additional storage as capacity needs grow.
- **Networking:** Cisco Nexus® 9000 series hardware provides high throughput, low latency, and rich feature sets.
- **Virtualized Infrastructure:** Fully integrated Red Hat Enterprise Linux and Red Hat OpenStack Platform runs on top of Cisco Unified Computing System™ (Cisco UCS®). It is open source yet hardened and mature.
- **Management:** Cisco UCS Director functions as a unified management tool across multiple virtual environments. SDN controller is optional.

NEW QUESTION 259

Which two REST API functions are performed for Cisco devices in an overlay network? (Choose two)

- A. distributing a Snort image among devices
- B. attaching a device configuration template
- C. managing connections for smart licensing
- D. monitoring device certificates
- E. querying a device and aggregating statistics

Answer: BD

NEW QUESTION 260

Which protocol is used to measure loss latency, Jitter, and liveliness of the tunnel between WAN Edge router peers?

- A. OMP
- B. IP SLA
- C. NetFlow
- D. BFD

Answer: D

NEW QUESTION 261

For data plane resiliency, what does the Cisco SD-WAN software implement?

- A. BFD
- B. establishing affinity between vSmart controllers and WAN Edge routers
- C. multiple vBond orchestrators
- D. OMP

Answer: A

Explanation: _____

NEW QUESTION 263

WAN Edge routers are configured manually to use UDP port offset to use nondefault offset values when IPsec tunnels are created. What is the offset range?

- A. 1-19
- B. 0-18
- C. 0-19
- D. 1-18

Answer: C

NEW QUESTION 267

Which two performance data details are provided by Cisco SD-WAN vAnalytics? (Choose two)

- A. jitter loss and latency for data tunnels
- B. application quality of experience score from zero to ten
- C. detail on total cost of ownership for the fabric
- D. certificate authority status (health and expiration dates) for all controllers
- E. view devices connected to a vManage NMS

Answer: AB

NEW QUESTION 271

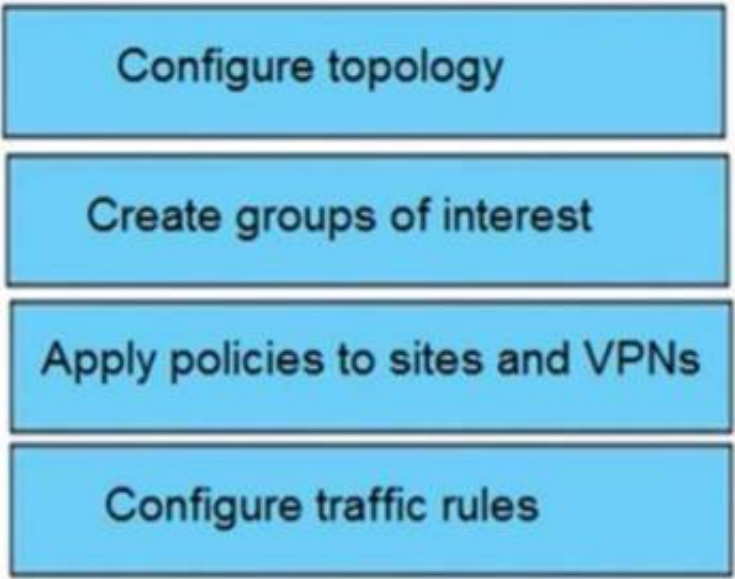
Drag and drop the vManage policy configuration procedures from the left onto the correct definitions on the right.

Create groups of interest	Create the network structure to which the policy applies
Configure traffic rules	Create lists that group together related items that an engineer can call in the match or action components of a policy
Configure topology	Associate a policy with sites and VPNs in the overlay network
Apply policies to sites and VPNs	Create the match and action conditions of a policy

- A. Mastered
- B. Not Mastered

Answer: A

Explanation:



The diagram shows a vertical stack of four blue boxes representing the correct sequence of vManage policy configuration procedures:

- Configure topology
- Create groups of interest
- Apply policies to sites and VPNs
- Configure traffic rules

NEW QUESTION 274

How many concurrent sessions does a vManage REST API have before it invalidates the least recently used session if the maximum concurrent session number is reached?

- A. 150
- B. 200
- C. 250
- D. 300

Answer: A

NEW QUESTION 276

Which command verifies a policy that has been pushed to the vEdge router?

- A. vEdge# show running-config data policy
- B. vEdge# show policy from-vsmart
- C. vSmart# show running-config policy
- D. vSmart# show running-config apply-policy

Answer: B

NEW QUESTION 278

Refer to the exhibit.

#Branch1-Edge1	#Branch1-Edge2
vpn 0	vpn 0
!	...
interface ge0/1	interface ge0/2
ip address	no shutdown
172.17.113.241/28	!
tunnel-interface	interface ge0/2.704
encapsulation ipsec	ip address 10.113.4.1/30
color mpls restrict	tunnel-interface
!	encapsulation ipsec
no shutdown	color mpls restrict
!	mtu 1496
interface ge0/2.704	no shutdown
ip address 10.113.4.2/30	!
tloc-extension ge0/2	ip route 0.0.0.0/0 10.113.4.2

Which configuration change is needed to configure the tloc-extension on Branch1-Edge1?

- A. interface ge0/2.704
ip address 10.113.4.1/30
tunnel-interface
encapsulation ipsec
color mpls restrict
no shutdown
- B. interface ge0/2.704
ip address 10.113.4.2/30
mtu 1496
tloc-extension ge0/1
- C. interface ge0/2.704
ip address 10.113.4.2/30
mtu 1496
tloc-extension ge0/2
- D. interface ge0/2.704
ip address 10.113.4.1/30
tunnel-interface
encapsulation ipsec
color mpls restrict
mtu 1496
tloc-extension ge0/2
no shutdown

- A. Option A
- B. Option B
- C. Option C
- D. Option D

Answer: B

NEW QUESTION 282

Refer to the exhibit

PEER TYPE	PEER PROTOCOL	PEER SYSTEM IP	SITE ID	DOMAIN ID	PEER PRIVATE IP	PEER PRIVATE PORT	PEER PUBLIC IP	PEER PUBLIC PORT	LOCAL COLOR	STATE	LOCAL/REMOTE	REPEAT COUNT
vbond	dtls	-	0	0	1.1.10.10	12346	1.1.10.10	12346	apls	tear_down	CRTREJ5ER NOERR	161
vbond	dtls	-	0	0	1.1.10.10	12346	1.1.10.10	12346	silver	tear_down	CRTREJ5ER NOERR	161
vbond	dtls	-	0	0	1.2.20.20	12346	1.2.20.20	12346	apls	tear_down	CRTREJ5ER NOERR	160
vbond	dtls	-	0	0	1.2.20.20	12346	1.2.20.20	12346	silver	tear_down	CRTREJ5ER NOERR	160

A WAN Edge device was recently added to vManage but a control connection could not be established Which action resolves this issue?

- A. Rectify the Rod CA certificate mismatch on WAN Edge devices
- B. Install the bootstrap code on WAN Edge and check for CSR
- C. Send the serial number to vBond from the vManage controller.
- D. Resolve the ZTP reachability and rectify smart account credentials issue

Answer: C

NEW QUESTION 283

Refer to the exhibit,

```
Site 1:
vpn 10
  service FW address 1.1.1.1

On vSmart
policy
lists
  site-list firewall-sites
  site-id 1

apply-policy
  site-list firewall-sites control-policy firewall-service out
```

Which configuration routes Site 2 through the firewall in Site 1?

- ☒ control-policy firewall-service
sequence 10
match route
site-id 2
action accept
set service local
default-action accept
- ☐ On vSmart
control-policy firewall-service
sequence 10
match route
site-id 2
action accept
set
service FW vpn 10
default-action accept
- ☐ On vSmart
control-policy firewall-service
sequence 10
match route
site-id 2
action accept
set
service FW vpn 10
service local
default-action accept
- ☐ On vSmart
control-policy firewall-service
sequence 10
match route
site-id 2
action accept
set service FW vpn 10
default-action accept

- A. Option A
- B. Option B
- C. Option C
- D. Option D

Answer: D

Explanation:

<https://www.cisco.com/c/en/us/td/docs/routers/sdwan/configuration/policies/vedge-20-x/policies-book/service-c>

Here is the configuration procedure:

1. On the hub router, provision the firewall service, specifying the IP address of the firewall device. With this configuration, OMP on the hub router advertises one service route to the Cisco vSmart Controller. The service route contains a number of properties that identify the location of the firewall, including the TLOC of the hub router and a service label of svc-id-1, which identifies the service type as a firewall. (As mentioned above, before advertising the route, the device ensures that the firewall's IP address can be resolved locally.)

```
vpn 10
  service FW address 1.1.1.1
```

2. On the Cisco vSmart Controller, configure a control policy that redirects data traffic traveling from Site 1 to Site 2 through the firewall. Then, also on the Cisco vSmart Controller, apply this policy to Site 1.

```
policy
  lists
    site-list firewall-sites
      site-id 1
  control-policy firewall-service
    sequence 10
      match route
        site-id 2
      action accept
      set service FW vpn 10
    default-action accept
  apply-policy
    site-list firewall-sites control-policy firewall-service out
```

NEW QUESTION 287

In which Cisco SD-WAN deployment scenario does Cisco Umbrella SIG deliver the most value?

- A. when a centralized Internet breakout solution is implemented
- B. when resource-intensive security operations are offloaded from entry-level WAN Edge devices
- C. when the identity of several WAN Edge devices is verified throughout the network throughout the network

Answer: B

NEW QUESTION 288

Which protocol is used by the REST API to communicate with network services in the Cisco SD-WAN network?

- A. SSL
- B. HTTP
- C. IPsec
- D. SSM

Answer: B

NEW QUESTION 291

What is the result during a WAN Edge software upgrade process if the version of the WAN Edge software is higher than the one running on a controller device?

- A. The upgrade button is greyed out
- B. The upgrade proceeds with no warning message.
- C. The upgrade fails with a warning message
- D. The upgrade proceeds with a warning message

Answer: D

NEW QUESTION 293

Which policy configures an application-aware routing policy under Configuration > Policies?

- A. Localized policy
- B. Centralized policy
- C. Data policy
- D. Control policy

Answer: B

NEW QUESTION 294

How are custom application ports monitored in Cisco SD-WAN controllers?

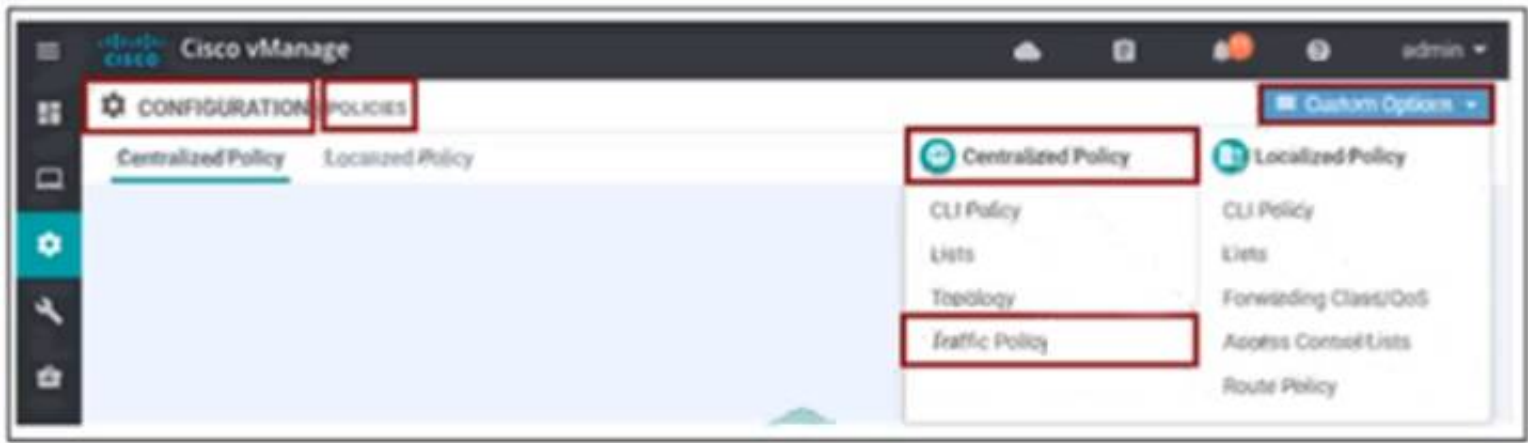
- A. Customers add custom application ports in vAnalytics and vManage.
- B. Customers add custom application ports in vAnalytics and vSmart.
- C. Cisco adds custom application ports in vAnalytics and vManage.
- D. Cisco adds custom application ports in vAnalytics and vSmart.

Answer: A

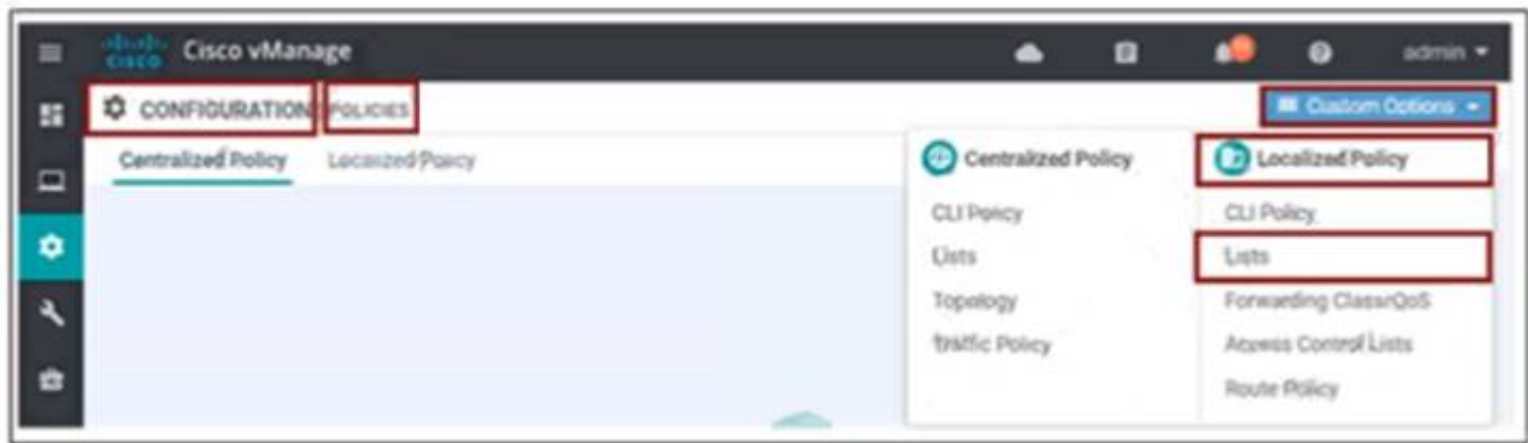
NEW QUESTION 295

An engineer must create a QoS policy by creating a class map and assigning it to the LLQ queue on a WAN Edge router Which configuration accomplishes the task?

A)



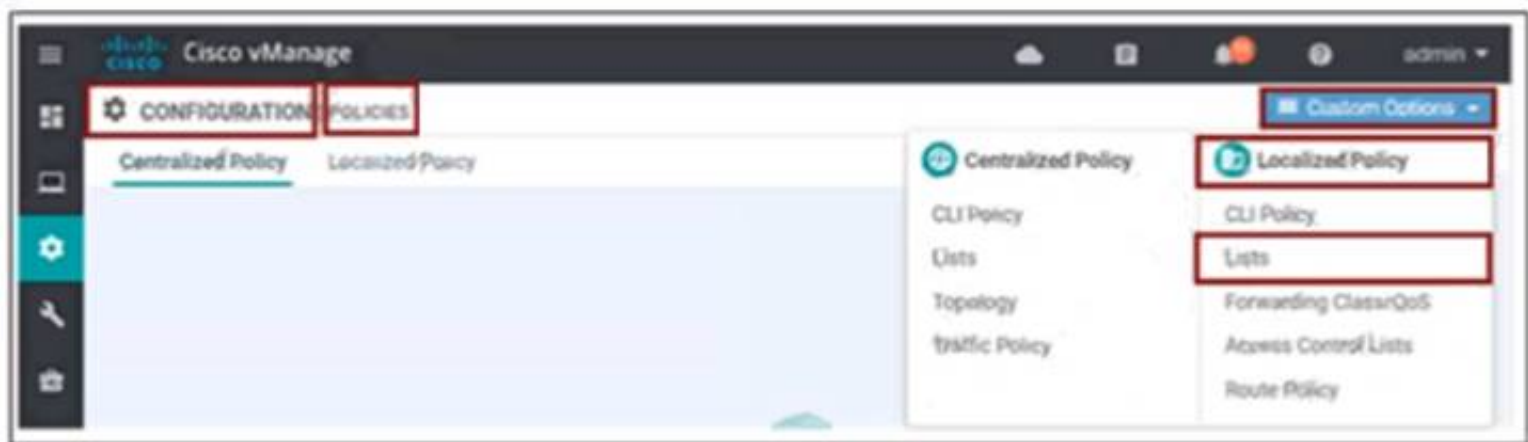
B)



C)



D)



- A. Option A
- B. Option B
- C. Option C
- D. Option D

Answer: D

NEW QUESTION 297

Refer to the exhibit.

Hostname	State	System IP	Reachability	Site ID	Device Model	BFD	Control
BR1-VEGE1	✓	10.3.0.1	reachable	300	vEdge Cloud	8	5

What does the BFD value of 8 represent?

- A. number of BFD sessions
- B. hello timer of BFD session

- C. poll-interval of BFD session.
- D. dead timer of BFD session

Answer: A

NEW QUESTION 302

Which protocol is configured on tunnels by default to detect loss, latency, jitter, and path failures in Cisco SD-WAN?

- A. TLS
- B. BFD
- C. OMP
- D. BGP

Answer: B

NEW QUESTION 303

A policy is created to influence routing path in the network using a group of prefixes. What policy application will achieve this goal when applied to a site List?

- A. vpn-membership policy
- B. cflowd-template
- C. app-route policy
- D. control-policy

Answer: D

NEW QUESTION 305

Which VManage dashboard is used to monitor the next-hop reachability between two devices traversing through OMP for a service VPN?

- A. Troubleshooting > App Route Visualization
- B. Troubleshooting > Tunnel Health
- C. Troubleshooting > Simulate Flows
- D. Troubleshooting > Packet Capture

Answer: C

NEW QUESTION 310

Which secure tunnel type should be used to connect one WAN Edge router to other WAN Edge routers?

- A. TLS
- B. DTLS
- C. SSL VPN
- D. IPsec

Answer: D

NEW QUESTION 313

How does the replicator role function in cisco SD-WAN?

- A. WAN Edge devices advertise the rendezvous point to all the receivers through the underlay network.
- B. vSmart Controllers advertise the rendezvous point to all the receivers through the overlay network.
- C. WAN Edge devices advertise the rendezvous point to all receivers through the overlay network.
- D. vSmart Controllers advertise the rendezvous point to all the receivers through the underlay network.

Answer: B

Explanation:

Replicators

For efficient use of WAN bandwidth, strategic Cisco SD-WAN routers can be deployed and configured as replicators throughout the overlay network. Replicators mitigate the requirement for a Cisco SD-WAN router with local sources or the PIM-RP to replicate a multicast stream once for each receiver. As discussed above, replicators advertise themselves, using OMP multicast-autodiscover routes, to the Cisco vSmart Controllers in the overlay network. The controllers then forward the replicator location information to the PIM-enabled Cisco IOS XE SD-WAN routers that are in the same VPN as the replicator.

NEW QUESTION 314

Which two products that perform lifecycle management for virtual instances are supported by WAN Edge cloud routers? (Choose two.)

- A. OpenStack
- B. AWS
- C. VMware vCenter
- D. Azure
- E. IBM Cloud

Answer: AC

Explanation:

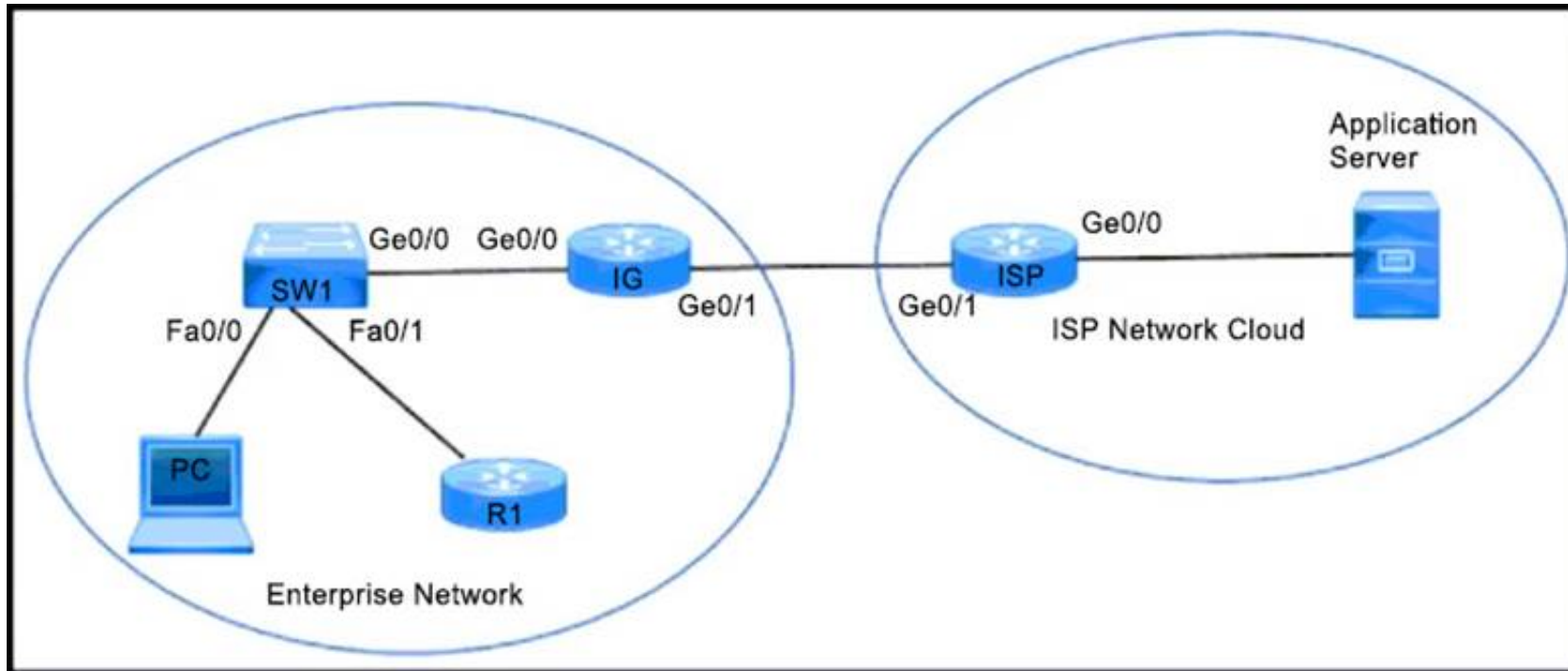
<https://www.cisco.com/c/en/us/solutions/collateral/enterprise-networks/sd-wan/nb-07-cloud-router-data-sheet-ct>

The following figure illustrates Cisco vEdge Cloud router solution elements.



NEW QUESTION 318

Refer to the exhibit.



An enterprise network is connected with an ISP network on an 80 Mbps bandwidth link. The network operation team observes 100 Mbps traffic on the 1Gig-ISP link during peak hours. Which configuration provides bandwidth control to avoid traffic congestion during peak hours?

A)

```
policy-map CUS_PMAP
class CUS_CMAP
  police 80000000 300000
!
interface gigabitethernet 0/0
description *** TO SW ***
ip address 10.0.10.5 255.255.255.0
service-policy input CUS_PMAPd
```

B)

```
policy-map SHAPE_MAP
class class-default
  shape average 80000000
!
interface gigabitethernet 0/1
description *** TO ISP ***
ip address 10.0.20.5 255.255.255.0
service-policy output SHAPE_MAP
```

C)

```
policy-map CUS_PMAP
class CUS_CMAP
  police 80000000 300000
!
interface gigabitethernet 0/0
description *** TO ISP ***
ip address 10.0.20.1 255.255.255.0
service-policy input CUS_PMAP
```

D)

```
policy-map SHAPE_MAP
class class-default
  shape average 80000000
!
interface gigabitethernet 0/1
description *** TO IG rack B455:A882:G718 ***
ip address 10.0.20.5 255.255.255.0
```


- A. Option A
- B. Option B
- C. Option C
- D. Option D

Answer: B

NEW QUESTION 321

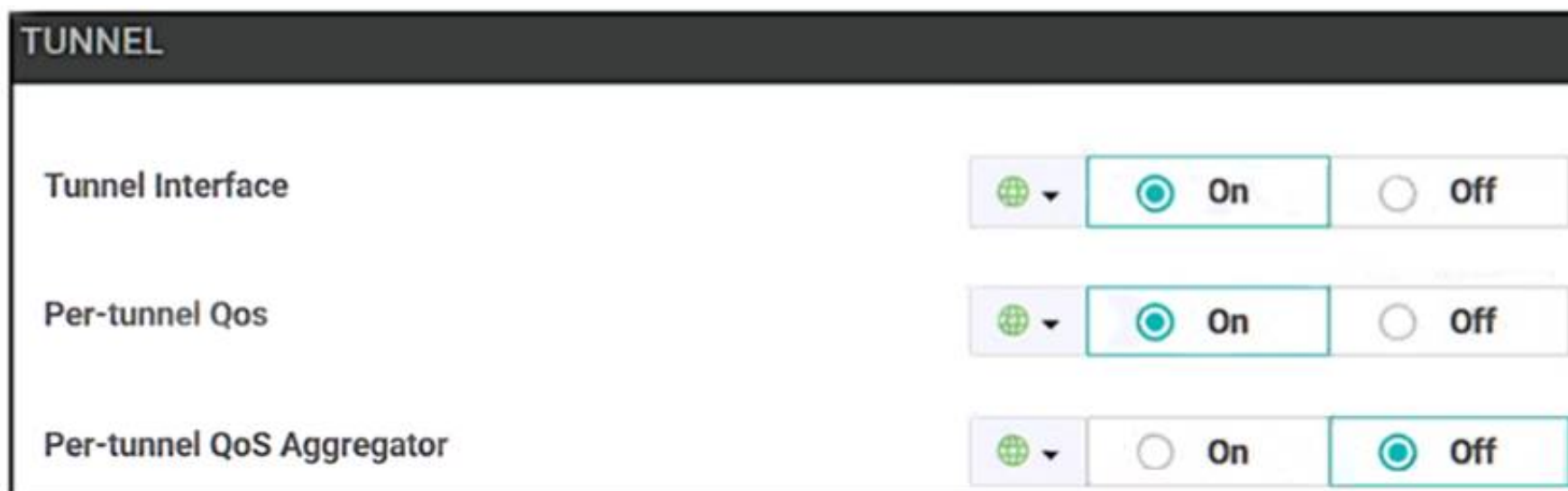
What are two attributes of vRoute? (Choose two)

- A. originator
- B. service
- C. encapsulation
- D. carrier
- E. domain ID

Answer: AB

NEW QUESTION 326

Refer to the exhibit



TUNNEL	
Tunnel Interface	<input checked="" type="radio"/> On <input type="radio"/> Off
Per-tunnel Qos	<input checked="" type="radio"/> On <input type="radio"/> Off
Per-tunnel QoS Aggregator	<input type="radio"/> On <input checked="" type="radio"/> Off

A user has selected the options while configuring a VPN Interface Ethernet feature template What is the required configuration parameter the user must set in this template for this feature to function?

- A. The "IP MTU" field must be increased from the default value of 1500 to support the additional overhead.
- B. The "Shaping Rate (Kbps)" field must be configured with a value
- C. The "Adaptive QoS" field must be set to "on"
- D. The "Bandwidth Downstream" field must be configured with a value

Answer: B

NEW QUESTION 327

What are the two functions of vSmart? (Choose two)

- A. It orchestrates connectivity between WAN Edge routers using policies to create network topology
- B. It ensures that valid WAN Edge routers can build the control pane connectivity
- C. It uses TLOCs to uniquely identify the circuit interface to control plane and data plane information
- D. It validates that the WAN Edge trying to join the overlay is authorized to join.
- E. It builds control plane connections with WAN Edge routers using ILS or UILS

Answer: DE

NEW QUESTION 332

An engineer must deploy a QoS policy with these requirements:

- policy name: App-police
- police rate: 1000000
- burst: 1000000
- exceed: drop

Which configuration meets the requirements?

- vpn-list VPN10
sequence 1
match
- A. app-list youtube
action accept
set
policer App-police
- policy
data-policy policy-name
vpn-list 10
- B. sequence 1
action accept
set
policer App-police
- vpn 10
interface ge0/0/0
- C. set
policer App-police in
default action accept
- policy
action accept
set
policer App-police
- D.

- A. Option A
B. Option B
C. Option C
D. Option D

Answer: B

NEW QUESTION 335

If Smart Account Sync is not used, which Cisco SD-WAN component is used to upload an authorized serial number file?

- A. WAN Edge
B. vManage
C. vSmart
D. vBond

Answer: B

Explanation:

https://sdwan-docs.cisco.com/Product_Documentation/vManage_Help/Release_18.3/Configuration/Devices

NEW QUESTION 338

An engineer configures policing with a rate of 125 Bps and a burst rate of 8000 bits, as shown here:

```
policy
  policer p1
  rate
  burst
  exceed drop
!
access-list acl1
  sequence 1
  match
  source-ip 2.2.0.0/16
  destination-ip 10.1.1.0/24 100.1.1.0/24
  destination-port 20 30
  protocol 6 17 23
!
  action accept
  policer p1
!
  default-action drop
!
vpn 1
  interface ge0/4
  description Policy ID: B413:A88D:76G7::4
  ip address 10.20.24.15/24
  no shutdown
  access-list acl1 out
!
```

Which configuration completes this task?

- A. Configure 125 for rate and 1000 for burst.
B. Configure 1000 for rate and 64000 for burst
C. Configure 125 for rate and 8000 for burst
D. Configure 1000 for rate and 1000 for burst

Answer: D

NEW QUESTION 340

Which actions must be taken to allow certain departments to require firewall protection when interacting with data center network without including other departments? (Choose two.)

- A. Use classification policing and marking
- B. Apply data policies at vEdge.
- C. Deploy a service-chained firewall service per VPN
- D. The regional hub advertises the availability of the firewall service
- E. Advertise to vSmart controllers

Answer: CD

NEW QUESTION 343

Which two criteria are supported to filter traffic on a Cisco Umbrella Cloud-delivered firewall? (Choose two)

- A. tunnels
- B. site ID
- C. URL
- D. geolocation
- E. protocol

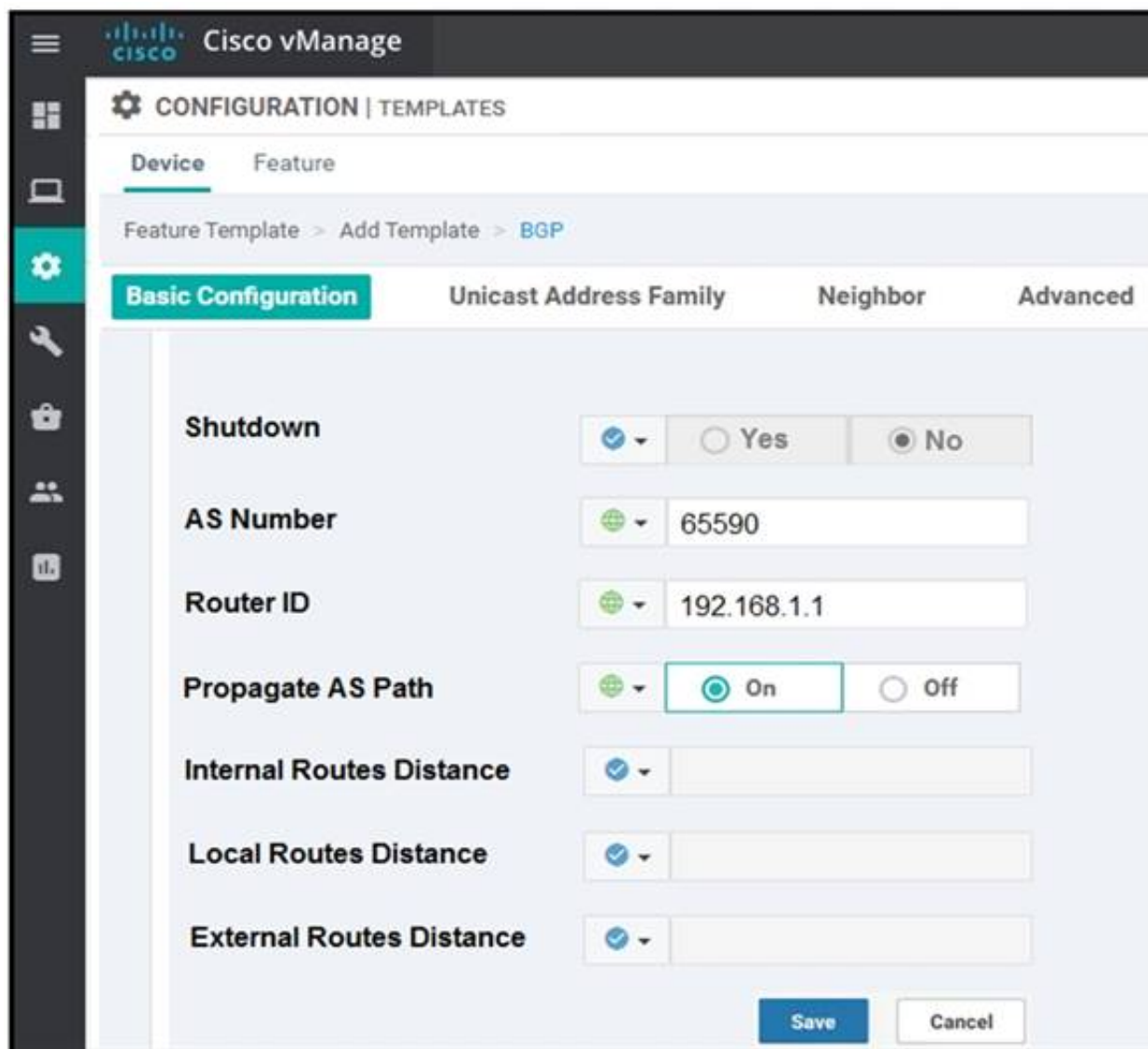
Answer: AE

Explanation:

<https://docs.umbrella.com/umbrella-user-guide/docs/add-a-firewall-policy>

NEW QUESTION 347

Refer to the exhibit.



The screenshot shows the Cisco vManage interface for configuring a BGP feature template. The 'Basic Configuration' tab is selected. The configuration fields are as follows:

Field	Value
Shutdown	<input checked="" type="radio"/> Yes <input type="radio"/> No
AS Number	65590
Router ID	192.168.1.1
Propagate AS Path	<input checked="" type="radio"/> On <input type="radio"/> Off
Internal Routes Distance	<input checked="" type="radio"/> 20
Local Routes Distance	<input checked="" type="radio"/> 20
External Routes Distance	<input checked="" type="radio"/> 20

Buttons: Save, Cancel

Which configuration value is used to change the administrative distance of iBGP routes to 20?

- A. Configure internal Routes Distance to 20
- B. Configure Propagate AS Path to off
- C. Configure Local Distance to 20
- D. Configure External routes distance 20

Answer: C

NEW QUESTION 349

Refer to the exhibit.

PEER TYPE	PEER PROTOCOL	PEER SYSTEM IP	SITE ID	DOMAIN ID	PEER PRIVATE IP	PEER PRIVATE PORT
vsmart	dtls	10.1.1.8	1	0	1.1.1.1	12447
vmanage	dtls	10.1.1.7	1	1	2.2.2.2	12647
vmanage	dtls	10.1.1.7	1	1	2.2.2.2	12867
LOCAL						
LOCAL COLOR	STATE	ERROR	ERROR	UNIT		
gold	up	LISFD	NOERR	45		
gold	up	LISFD	NOERR	70		
gold	up	LISFD	NOERR	69		

An engineer is troubleshooting a control connection issue on a WAN Edge device that shows socket errors. The packet capture shows some ICMP packets dropped between the two devices. Which action resolves the issue?

- A. Recover the vManage controller that is down in a high availability cluster
- B. Change the system IP or restart the VWN Edge if the system IP is changed
- C. Remove IP duplication in the network and configure a unique IP address
- D. Recover vBond or wait for the controller to reload which could be caused by a reset

Answer: C

NEW QUESTION 354

A voice packet requires a latency of 50 msec. Which policy is configured to ensure that a voice packet is always sent on the link with less than a 50 msec delay?

- A. centralized control
- B. localized data
- C. localized control
- D. centralized data

Answer: D

Explanation:

<https://www.cisco.com/c/en/us/td/docs/routers/sdwan/configuration/policies/ios-xe-17/policies-book-xe/applicat>

NEW QUESTION 356

An engineer creates this data policy for DIA for VPN 10:

```
data-policy DIA
vpn-list VPN-10
sequence 10
match
destination-data-prefix-list INTERNAL-NETWORKS
!
action accept
```

Which policy sequence enables DIA for external networks?

- ☐ sequence 5
match
source-ip 0.0.0.0/0
!
action accept
nat use-vpn 0
- ☐ sequence 5
match
destination-ip 0.0.0.0/0
!
action reject
!
default-action accept
- ☐ sequence 20
match
destination-ip 0.0.0.0/0
!
action accept
nat use-vpn 0
- ☐ sequence 20
match
source-ip 0.0.0.0/0
!
action reject
!
default-action accept

- A. Option A
- B. Option B
- C. Option C
- D. Option D

Answer: C

NEW QUESTION 358

Drag and drop the steps from the left into the sequence on the right for a WAN Edge router after powering on for zero touch provisioning.

Router contacts a DNS service.	1
Router establishes a connection to vBond.	2
Router contacts a DHCP server.	3
Router connects to the ZTP server.	4

- A. Mastered
- B. Not Mastered

Answer: A

Explanation:

Router contacts a DNS service.	Router contacts a DHCP server.
Router establishes a connection to vBond.	Router contacts a DNS service.
Router contacts a DHCP server.	Router connects to the ZTP server.
Router connects to the ZTP server.	Router establishes a connection to vBond.

NEW QUESTION 362

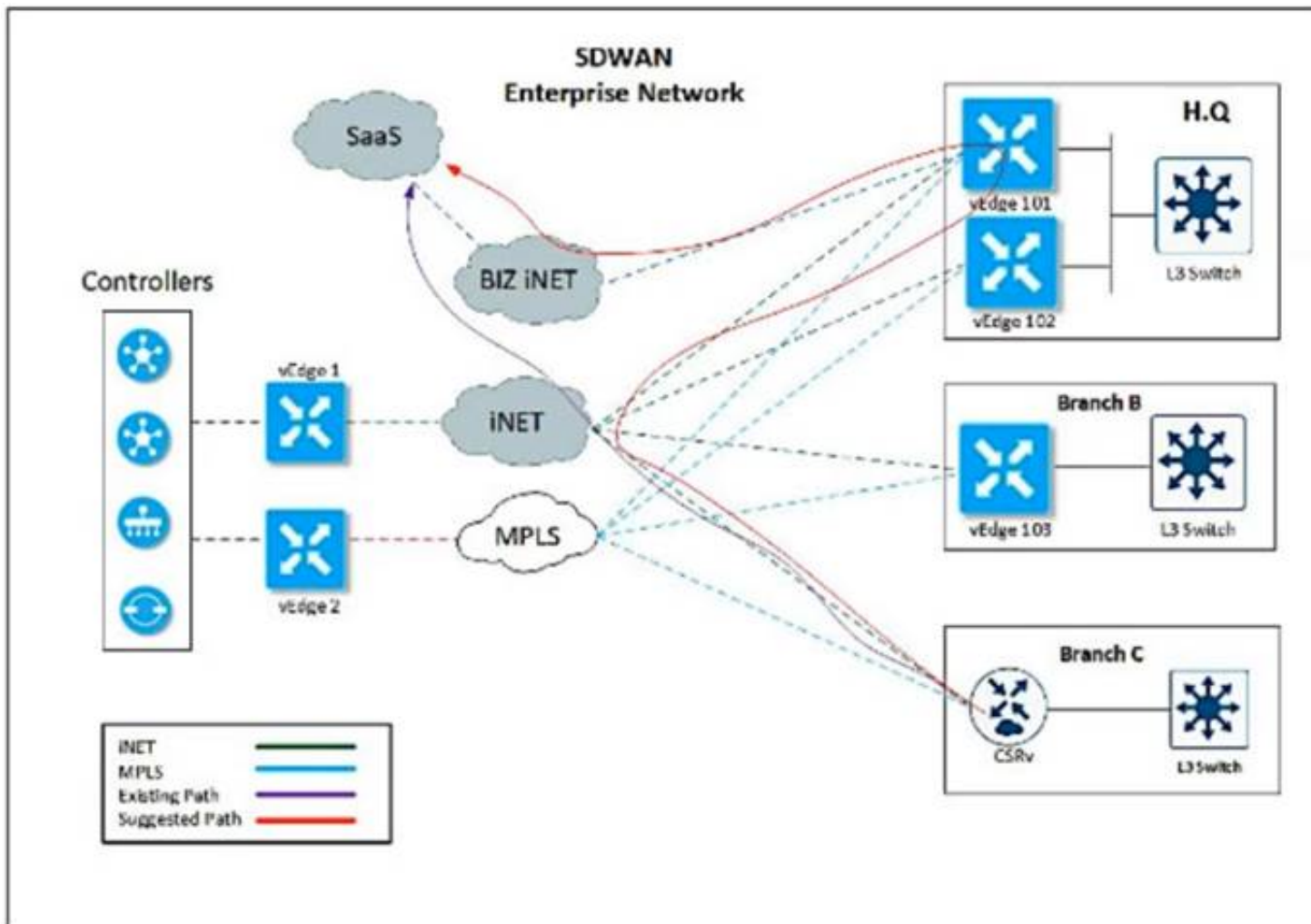
How is a TLOC uniquely identified from a WAN Edge router to the SD-WAN transport network?

- A. system IP address
- B. VPN ID
- C. OMP
- D. SD-WAN site ID

Answer: A

NEW QUESTION 365

Refer to the exhibit.



An enterprise decides to use the Cisco SD-WAN Cloud onRamp for SaaS feature and utilize H.Q site Biz iNET to reach SaaS Cloud for branch C. currently reaching SaaS Cloud directly. Which role must be assigned to devices at both sites in vManage Cloud Express for this solution to work?

- A. H.Q to be added as Gateway and Branch as DIA.
- B. Branch to be added as Client Sites and H.Q as DIA.
- C. Branch to be added as DIA and H.Q as Client Site.
- D. H.Q to be added as Gateway and Branch as Client Site.

Answer: B

NEW QUESTION 366

How is the software managed in Cisco SD-WAN?

- A. Software upgrade operation in the group must include vManag
- B. vBon
- C. and vSmart.
- D. Software downgrades are unsupported for vManage
- E. Software images must be uploaded to vManage through HTTP or FTP.
- F. Software images must be transferred through VPN 512 or VPN 0 of vManage.

Answer: A

NEW QUESTION 370

Which component is responsible for routing protocols such as BGP and OSPF in a Cisco SD-WAN solution?

- A. vSmart Controller
- B. vBond Orchestrator
- C. vManage
- D. WAN Edge Router

Answer: D

Explanation:

WAN Edge router - This device, available as either a hardware appliance or software-based router, sits at a physical site or in the cloud and provides secure data plane connectivity among the sites over one or more WAN transports. It is responsible for traffic forwarding, security, encryption, quality of service (QoS), routing protocols such as Border Gateway Protocol (BGP) and Open Shortest Path First (OSPF), and more.

NEW QUESTION 375

An enterprise has these three WAN connections:

- > public Internet
- > business internet
- > MPLS

An engineer must configure two available links to route traffic via both links. Which configuration achieves this objective?

- ☐ omp
no shutdown
route-limit 2
- ☐ omp
no shutdown
send-path-limit 2
- ☐ omp
no shutdown
overlay-as 2
- ☐ omp
no shutdown
ecmp-limit 2

- A. Option A
- B. Option B
- C. Option C
- D. Option D

Answer: B

NEW QUESTION 380

Which two mechanisms are used by vManage to ensure that the certificate serial number of the WAN Edge router that is needed to authenticate is listed in the WAN Edge Authorized Señal Number Hst’ (Choose two)

- A. Synchronize to the PnP
- B. Manually upload it to vManage
- C. The devices register to vManage directly as the devices come online
- D. The vManage is shipped with the list
- E. Synchronize to the Smart Account

Answer: BE

NEW QUESTION 383

Which command displays BFD session summary information per TLOC on vEdge routers?

- A. show bfd history
- B. show bfd summary
- C. show bfd sessions
- D. show bfd tloc-summary-list

Answer: D

NEW QUESTION 387

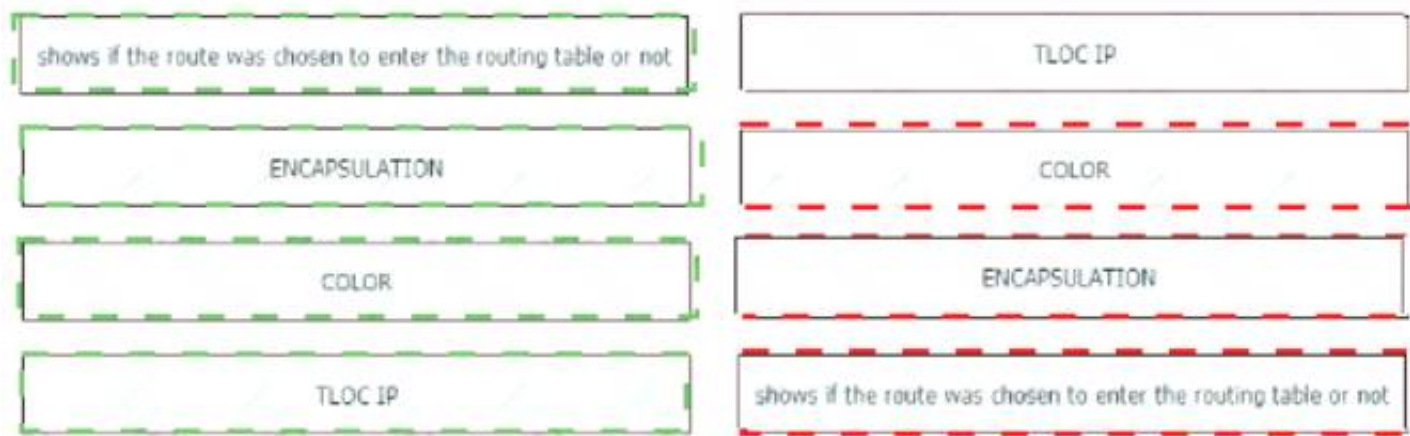
Drag and drop the route verification output from show omp tlocs from the left onto the correct explanations on the right.

shows if the route was chosen to enter the routing table or not	system ID
ENCAPSULATION	attribute of WAN link
COLOR	type of tunnel being used
TLOC IP	TLOC route status

- A. Mastered
- B. Not Mastered

Answer: A

Explanation:



NEW QUESTION 392

Refer to exhibit. An engineer is troubleshooting tear of control connection even though a valid CertificateSerialNumber is entered. Which two actions resolve Issue? (Choose two)

PEER PEER INSTANCE COLOR	PEER TYPE STATE	PEER PRIVATE PROTOCOL dtls	PEER SYSTEM IP 0.0.0.0	SITE IP 9	DOMAIN PUBLIC ID 0	DOMAIN ID 0	PRIVATE IP 192.168.0.231	LOCAL PORT 12346	REMOTE PUBLIC IP 192.168.0.231	REPEAT PORT 12346	REMOTE default
0	tear_down	vbond	CRTREJSER NOERR	9	2019-06-01T19:06:32+0200						

- A. Restore network reachability on the controller.
- B. Enter a valid serial number on the controller for a given device
- C. Enter a valid product ID (mode) on the PNP portal.
- D. Match the serial number file between the controller
- E. Remove the duplicate IP in the network

Answer: BC

NEW QUESTION 397

Which type of route advertisement of OMP can be verified?

- A. OMP, VP
- B. and origin
- C. Origin, TLOC, and VPN
- D. Origin, TLOC, and service
- E. OMP, TLOC and service

Answer: D

NEW QUESTION 399

Which two features does the application firewall provide? (Choose two.)

- A. classification of 1400+ layer 7 applications
- B. blocks traffic by application or application-family
- C. numbered sequences of match-action pairs
- D. classification of 1000+ layer 4 applications
- E. application match parameters

Answer: AB

Explanation:

This application aware firewall feature provides the following benefits:

- Application visibility and granular control
- Classification of 1400+ layer 7 applications
- Allows or blocks traffic by application, category, application-family or application-group

NEW QUESTION 400

Which on-the-box security feature supported by the Cisco ISR 4451 SD-WAN device and not on vEdge?

- A. Cloud Express service
- B. Enterprise Firewall with Application Awareness
- C. reverse proxy
- D. IPsec/GRE cloud proxy

Answer: B

Explanation:

<https://www.cisco.com/c/en/us/products/collateral/software/one-wan-subscription/guide-c07-740642.html#Step2>

NEW QUESTION 405

A WAN Edge device has several service VPNs with no routing protocol configured in the service VPNs The device must be configured so that all connected routes are visible in OMP for VPN 10 Which configuration meets the requirement?

A)

```
vpn 10
name "---- Service VPN 10 ----"
omp
redistribute connected
```

B)

```
omp
no shutdown
graceful-restart
advertise connected
```

C)

```
omp
no shutdown
graceful-restart
redistribute connected
```

D)

```
vpn 10
name "---- Service VPN 10 ----"
omp
advertise connected
```

A. Option A

B. Option B

C. Option B

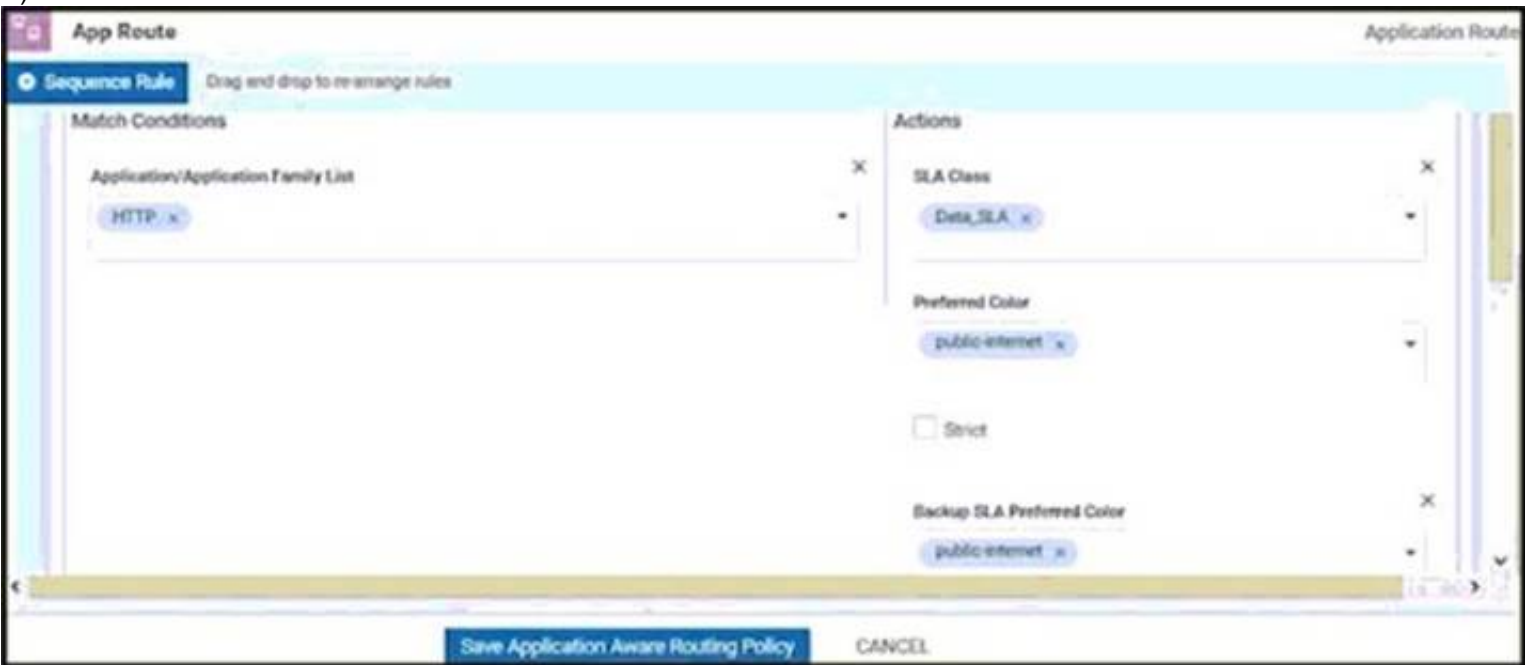
D. Option C

Answer: D

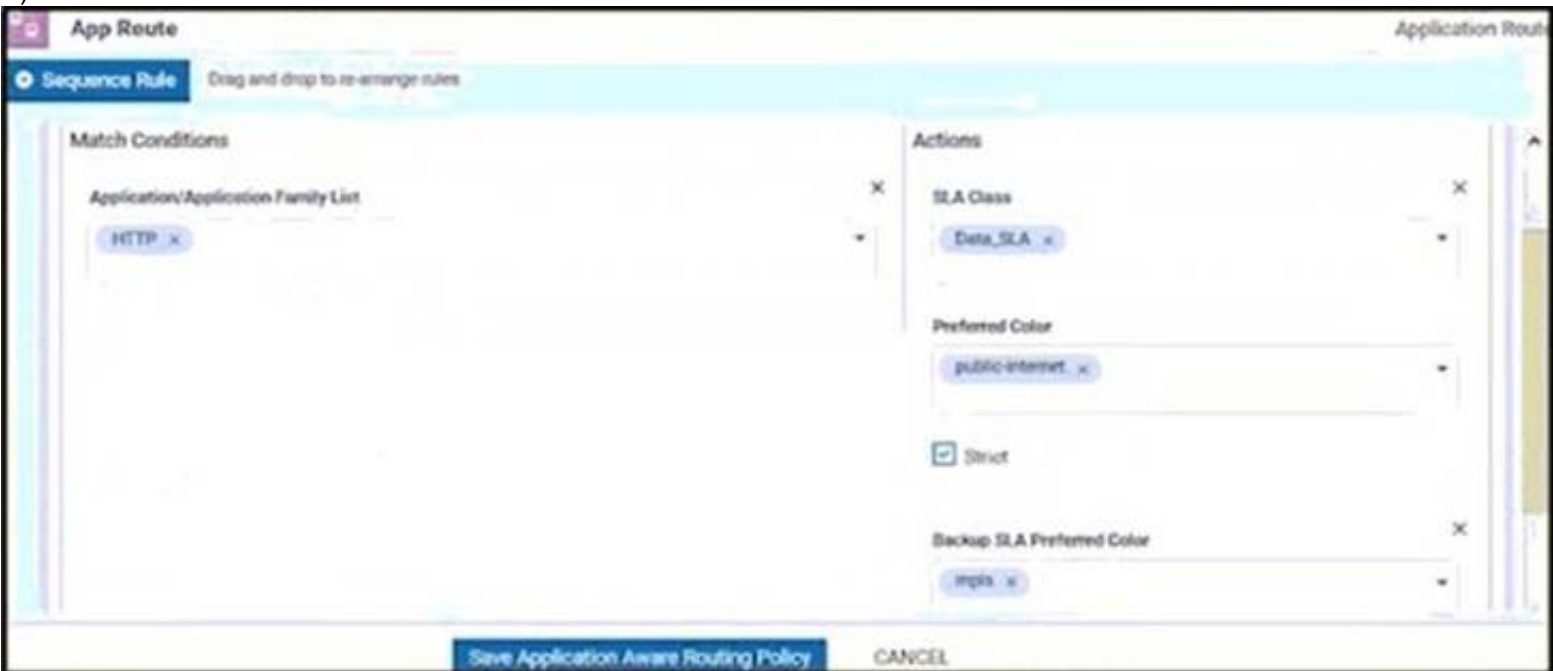
NEW QUESTION 407

An engineer must improve video quality by limiting HTTP traffic to the Internet without any failover. Which configuration in vManage achieves this goal?

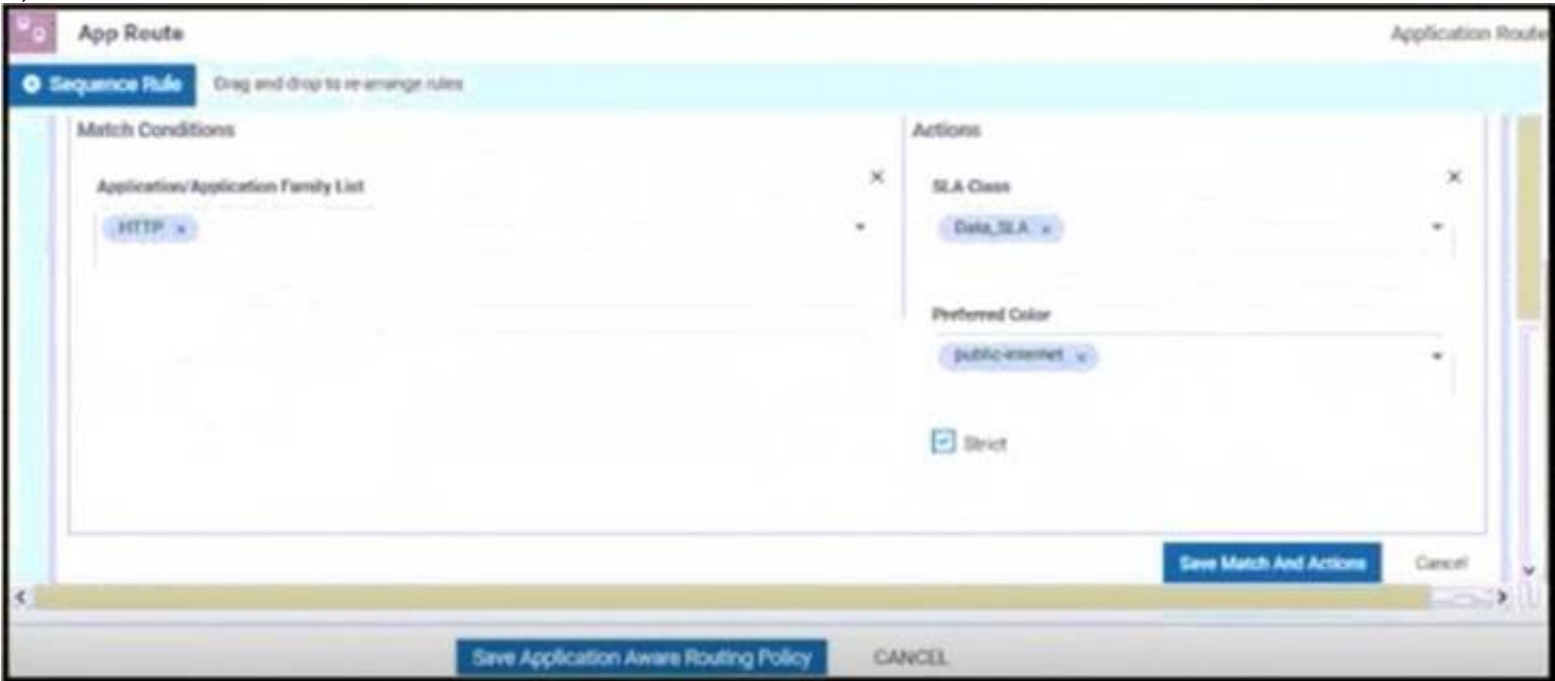
A)



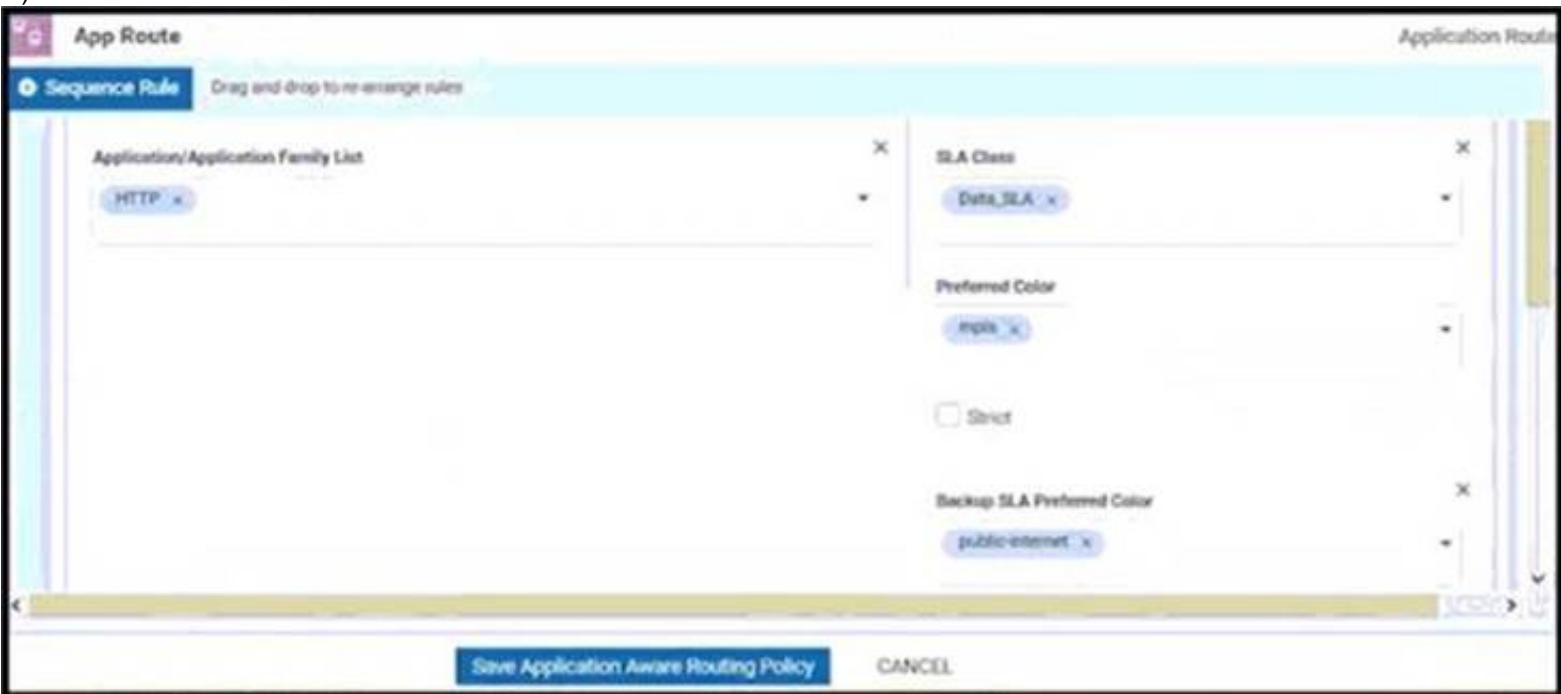
B)



C)



D)



- A. Option A
- B. Option B
- C. Option C
- D. Option D

Answer: C

NEW QUESTION 412

Drag and drop the definitions from the left to the configuration on the right.

matching condition that allows traffic flow between two zones	destination zone
grouping of VPNs where the data traffic flows originate	firewall policy
container that associates forwarding and blocking decisions	source zone
grouping of VPNs where the data traffic flows terminate	zone pair

- A. Mastered
- B. Not Mastered

Answer: A

Explanation:

- **Source zone**—A grouping of VPNs where the data traffic flows originate.
- **Destination zone**—A grouping of VPNs where the data traffic flows terminate. A VPN can be part of only one zone
- **Zone-based firewall policy**—A data policy, similar to a localized data policy, that defines the conditions that the data traffic flow from the source zone must match to allow the flow to continue to the destination zone. Zone-based firewalls can match IP prefixes, IP ports, and protocols TCP, UDP, and ICMP. Matching flows can be accepted or dropped, and the packet headers can be logged. Nonmatching flows are dropped by default.
- **Zone pair**—A container that associates a source zone with a destination zone and that applies a zone-based firewall policy to the traffic that flows between zones.

NEW QUESTION 416

What is a benefit of the application-aware firewall?

- A. It blocks traffic by MAC address
- B. It blocks traffic by MTU of the packet.
- C. It blocks traffic by application.
- D. It blocks encrypted traffic

Answer: C

NEW QUESTION 417

Which device information is required on PNP/ZTP to support the zero-touch onboarding process?

- A. serial and chassis numbers
- B. interface IP address
- C. public DNS entry
- D. system IP address

Answer: A

Explanation:

<https://www.cisco.com/c/dam/en/us/td/docs/solutions/CVD/SDWAN/sd-wan-wan-edge-onboarding-deploy-guid>

NEW QUESTION 422

Which routing protocol is used to exchange control plane information between vSmart controllers and WAN Edge routers in the Cisco SD-WAN secure extensible network?

- A. BGP
- B. OSPF
- C. BFD
- D. OMP

Answer: D

NEW QUESTION 426

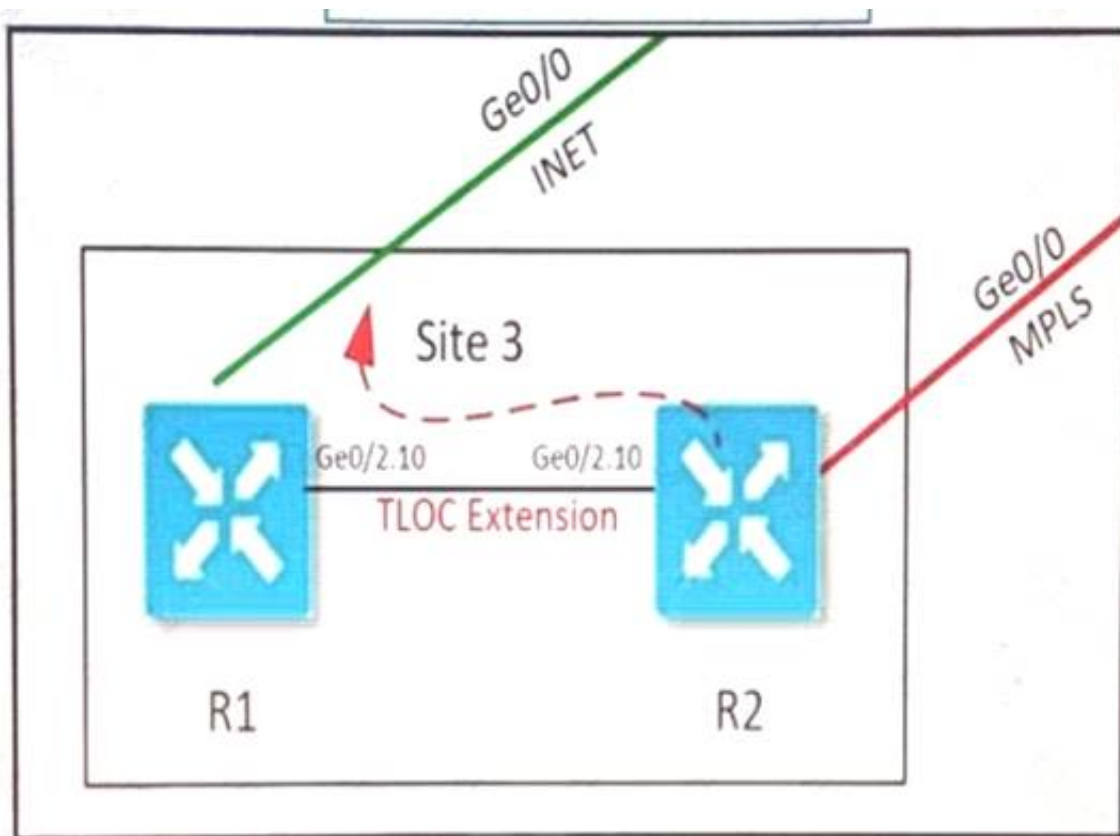
What is the procedure to upgrade all Cisco SD-WAN devices to a recent version?

- A. The upgrade is performed for a group of WAN Edge devices first to ensure data-plane availability when other controllers are updated.
- B. The upgrade is performed first on vManage, then on WAN Edge devices, then on vBond and finally on vSmart. The reboot must start from WAN Edge devices.
- C. Upgrade and reboot are performed first on vManage then on vBond then on vSmart
- D. and finally on the Cisco WAN Edge devices.
- E. Upgrade and reboot are performed first on vBond
- F. then on vSmart
- G. and finally on the Cisco WAN Edge devices.

Answer: C

NEW QUESTION 430

Refer to the exhibit.



Which configuration extends the INET interface on R1 to be used by R2 for control and data connections?

A)

```
R1
interface ge0/2
 no shutdown
interface ge0/2.10
 ip address 43.43.43 2/30
 tloc-extension ge0/0

R2
interface ge0/2
 no shutdown
interface ge0/2.10
 ip address 43.43.43 1/30
 tloc-extension ge0/0
```

B)

```
R1
interface ge0/2
interface ge0/2.10
 ip address 43.43.43 2/30
 tloc-extension ge0/0
 tunnel-interface
 color public-internet

R2
interface ge0/2
interface ge0/2.10
 ip address 43.43.43 1/30
 tunnel-interface
 color public-internet
```

C)

```
R1
interface ge0/2
 mtu 1504
 no shutdown
interface ge0/2.10
 ip address 43.43.43 2/30
 tloc-extension ge0/0

R2
interface ge0/2
 mtu 1504
 no shutdown
interface ge0/2.10
 ip address 43.43.43 1/30
 tunnel-interface
 color public-internet
```

A. Option A

B. Option B

C. Option C

Answer: C

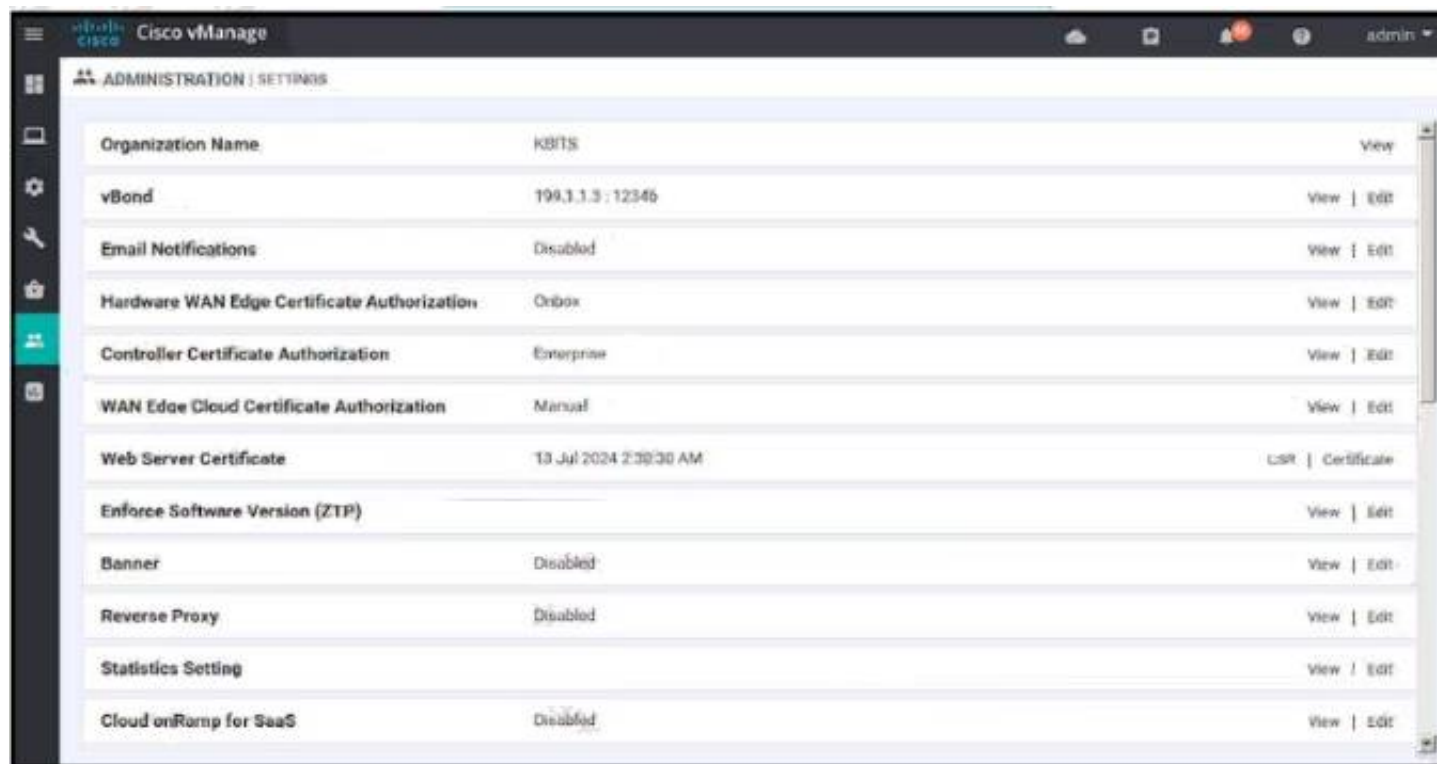
Explanation:

<https://www.ciscolive.com/c/dam/r/ciscolive/us/docs/2018/pdf/BRKRST-2091.pdf>

Subinterfaces require a physical, parent interface to be defined in VPN 0, and also require the subinterface MTU to be four bytes lower than the physical interface due to the 802.1q tag. It is recommended to configure the parent physical interface for an MTU of 1504 to take care of this requirement.

NEW QUESTION 434

Refer to the exhibit.



Which two configurations are needed to get the WAN Edges registered with the controllers when certificates are used? (Choose two)

- A. Generate a CSR manually within vManage server
- B. Generate a CSR manually on the WAN Edge
- C. Request a certificate manually from the Enterprise CA server
- D. Install the certificate received from the CA server manually on the WAN Edge
- E. Install the certificate received from the CA server manually on the vManage

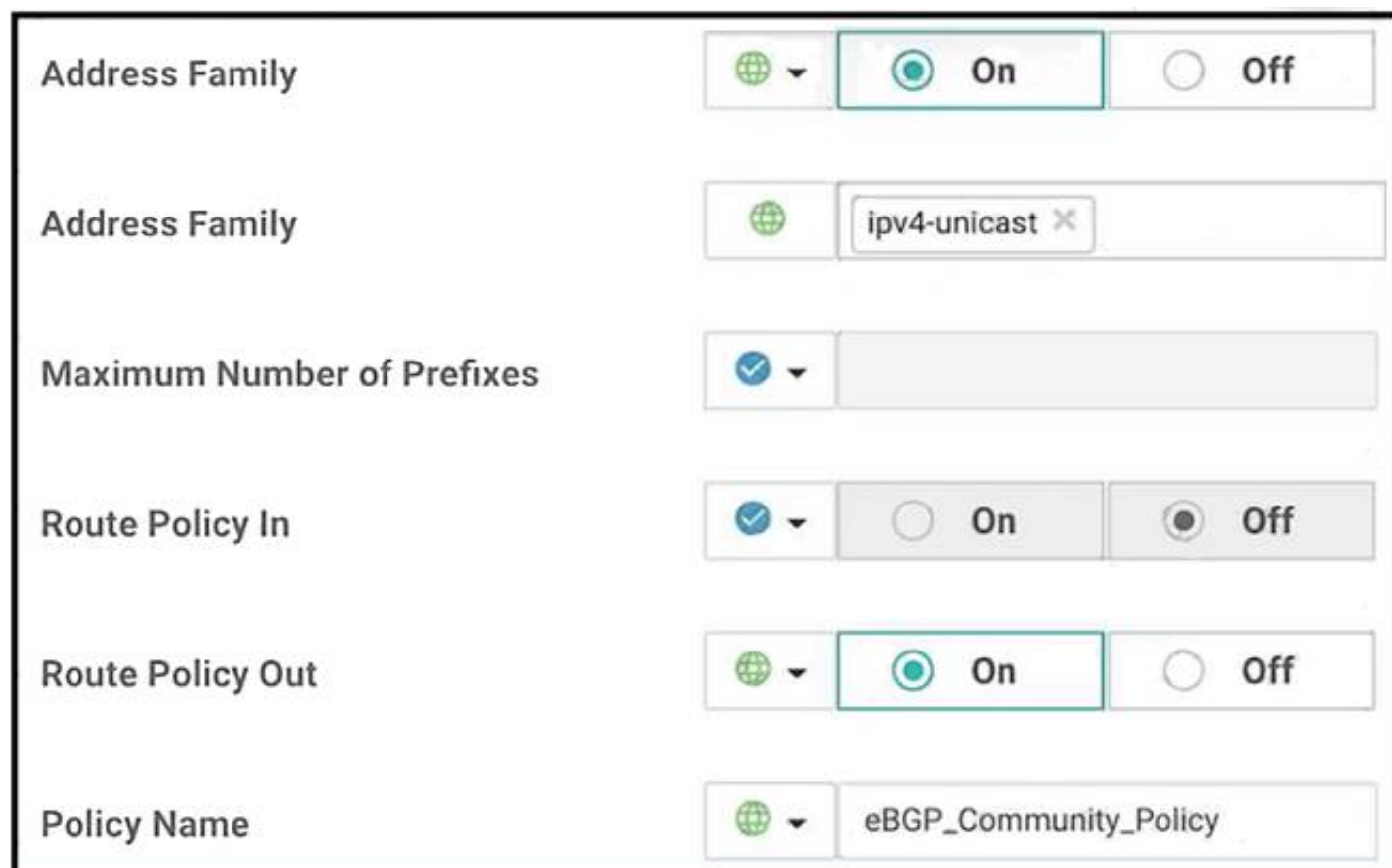
Answer: AE

Explanation:

<https://www.cisco.com/c/dam/en/us/td/docs/solutions/CVD/SDWAN/cisco-sd-wan-certificates-deploy-2020aug>.

NEW QUESTION 438

Refer to the exhibit.



The engineer must assign community tags to 3 of its 74 critical server networks as soon as that are advertised to BGP peers. These server networks must not be advertised outside AS. Which configuration fulfill this requirement?

A)

```
policy
route-policy eBGP_Community_Policy
sequence 1
match
address Community_Prefix
action accept
set
community 999:65000 local-as
default-action reject
lists
prefix-list Community_Prefix
ip-prefix 20.20.20.0/24
ip-prefix 21.21.21.0/24
ip-prefix 22.22.22.0/24
```

B)

```
policy
route-policy eBGP_Community_Policy
sequence 1
match
address Community_Prefix
action accept
set
community 999:65000 no-export
default-action accept
lists
prefix-list Community_Prefix
ip-prefix 20.20.20.0/24
ip-prefix 21.21.21.0/24
ip-prefix 22.22.22.0/24
```

C)

```
policy
route-policy eBGP_Community_Policy
sequence 1
match
address Community_Prefix
action accept
set
community 999:65000 local-as
default-action reject
lists
prefix-list Community_Prefix
ip-prefix 20.20.20.0/24
ip-prefix 21.21.21.0/24
ip-prefix 22.22.22.0/24
```

D)

```
policy
route-policy eBGP_Community_Polic
sequence 1
match
address Community_Prefix
action accept
set
community 999:65000 no-export
default-action accept
lists
prefix-list Community_Prefix
ip-prefix 20.20.20.0/24
ip-prefix 21.21.21.0/24
ip-prefix 22.22.22.0/24
```

- A. Option A
- B. Option B
- C. Option C
- D. Option D

Answer: D

NEW QUESTION 443

An engineer is tasked to improve throughput for connection-oriented traffic by decreasing round-trip latency. Which configuration will achieve this goal?

- A. turn on "Enable TCP Optimization"
- B. turn off "Enhance ECMP Keying"
- C. turn off "Enable TCP Optimization"
- D. turn on "Enhance ECMP Keying"

Answer: A

Explanation:

TCP optimization fine-tunes the processing of TCP data traffic to decrease round-trip latency and improve throughput.

<https://www.cisco.com/c/dam/en/us/td/docs/routers/sdwan/configuration/config-18-2.pdf#page=530>

NEW QUESTION 446

Which IP address must be reachable by a WAN Edge device for the ZIP process to work?

- A. 10.1.1.1
- B. 4.4 4.4
- C. 172.16.1.1
- D. 8.8.8.8

Answer: D

NEW QUESTION 450

Which two protocols are supported for software image delivery when images are hosted on a remote server? (Choose two.)

- A. HTTPS
- B. SSL
- C. HTTP
- D. TFTP
- E. FTP

Answer: DE

NEW QUESTION 453

Drag and drop the devices from the left onto the correct functions on the right.

vSmart	establishes a secured data plane
vManage	first point of authentication
vEdge	single pane of glass
vBond	enforces control policies

- A. Mastered
- B. Not Mastered

Answer: A

Explanation:

vEdge

vBond

vManage

vSmart

NEW QUESTION 458

Which SD-WAN component is configured to enforce a policy to redirect branch-to-branch traffic toward a network service such as a firewall or IPS?

- A. vBond
- B. WAN Edge
- C. vSmart
- D. Firewall

Answer: C

NEW QUESTION 460

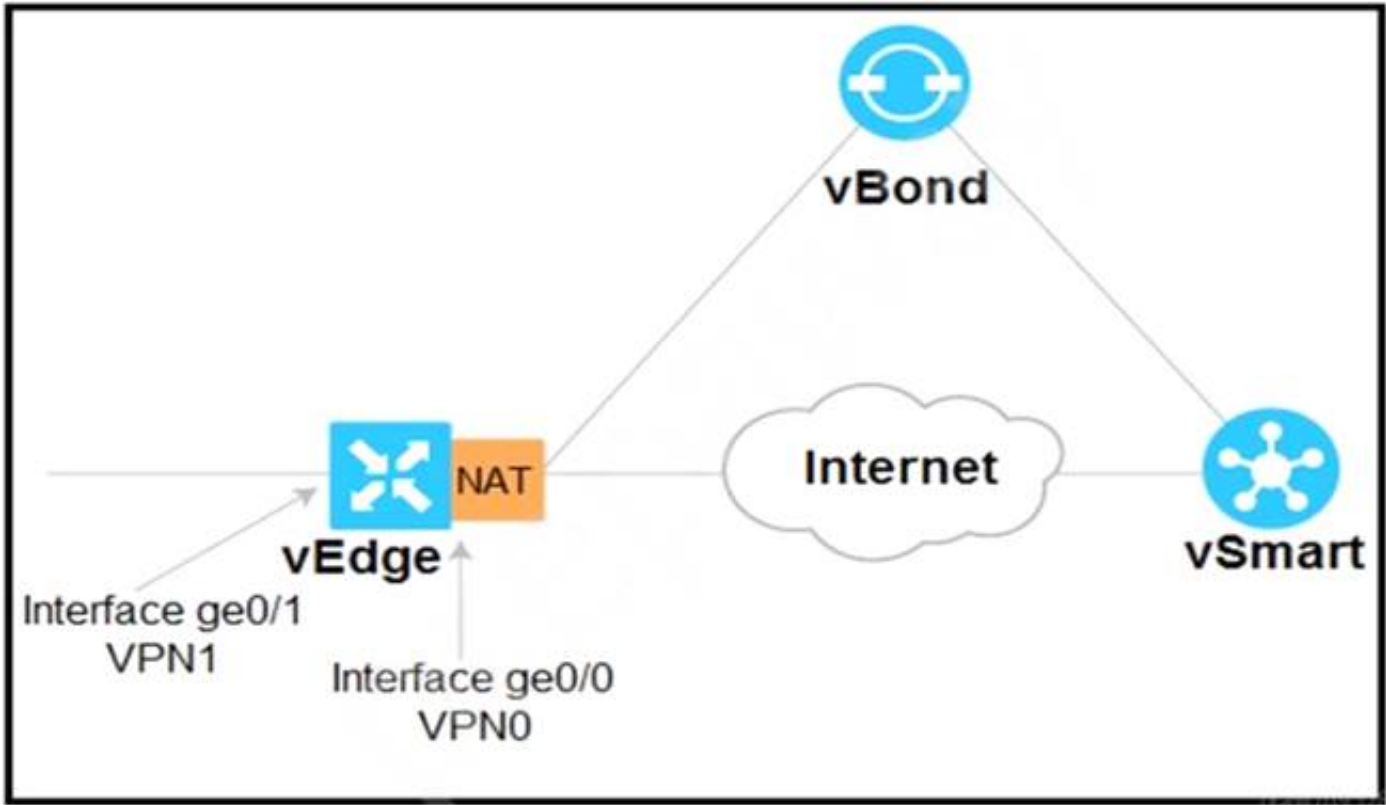
What is the order of operations for software upgrades of Cisco SD-WAN nodes'?

- A. vBond vManage vSmart WAN Edge
- B. vManage vBond WAN Edg
- C. vSmart
- D. vManage vSmart, vBond, WAN Edge
- E. vManage vBond vSraart WAN Edge

Answer: D

NEW QUESTION 462

Refer to the exhibit



Which configuration sets up direct Internet access for VPN 1?

- ☒ vpn 1


```

      ...
      interface ge0/1
      ...
      nat
      !
      no shutdown
      ...
      vpn 0
      ...
      ip route 0.0.0.0/0 vpn 1
      
```
- ☐ vpn 1


```

      ...
      interface ge0/0
      nat
      !
      no shutdown
      ...
      vpn 0
      ...
      ip route 0.0.0.0 vpn 1
      
```
- ☐ vpn 0


```

      ...
      interface ge0/1
      ...
      ip nat
      !
      no shutdown
      ...
      vpn 1
      ...
      ip route 0.0.0.0/0 vpn 0
      
```

- A. Option A
- B. Option B
- C. Option C

Answer: C

NEW QUESTION 465

.....

Thank You for Trying Our Product

We offer two products:

1st - We have Practice Tests Software with Actual Exam Questions

2nd - Questions and Answers in PDF Format

300-415 Practice Exam Features:

- * 300-415 Questions and Answers Updated Frequently
- * 300-415 Practice Questions Verified by Expert Senior Certified Staff
- * 300-415 Most Realistic Questions that Guarantee you a Pass on Your First Try
- * 300-415 Practice Test Questions in Multiple Choice Formats and Updates for 1 Year

100% Actual & Verified — Instant Download, Please Click
[Order The 300-415 Practice Test Here](#)