

Microsoft

Exam Questions PL-500

Microsoft Power Automate RPA Developer



NEW QUESTION 1

- (Exam Topic 1)

You need to ensure that the solution uses the correct accounts payable mailbox. Which three actions should you perform? Each correct answer part of the solution, NOTE: Each correct selection is worth one point.

- A. Set the current value for the accounts payable mailbox in the environment.
- B. Set the default value for the accounts payable mailbox in the environment.
- C. Turn off and then turn on the cloud flows.
- D. Use separate environment variables for the cloud flow and the canvas app.
- E. Use one environment variable for both the cloud flows and the canvas app.

Answer: ACD

NEW QUESTION 2

- (Exam Topic 1)

You need to implement security to resolve the invoice data issue

Which three actions should you perform? Each correct answer presents part of the solution. NOTE: Each correct selection is worth one point.

- A. Select the Finance role, select Core Records, and then navigate to the table.
- B. Clear the Create and Delete permission
- C. Set the Read permission and Write permission values to Business unit D
- D. In Microsoft Power Platform admin center, navigate to the Security roles section.
- E. In Microsoft Power Platform admin center, navigate to the Users section.
- F. Select the Finance role, select Custom Entities and navigate to the table.
- G. Clear the Create and Delete permission
- H. Set the Read permission and Write permission values to Organization.

Answer: ACF

NEW QUESTION 3

- (Exam Topic 2)

You need to address the issue with the capacity planning flow. What should you do?

- A. Increase the CPU and memory of the machine on which the gateway is hosted.
- B. Create a gateway cluster.
- C. Configure the system to send alerts when the gateway fails.
- D. Create a machine group and add machines to the group to handle requests.

Answer: D

NEW QUESTION 4

- (Exam Topic 2)

You need to configure sharing for MaintenanceScheduler.

Which sharing methods should you use? To answer, select the appropriate options in the answer area. NOTE: Each correct selection is worth one point.

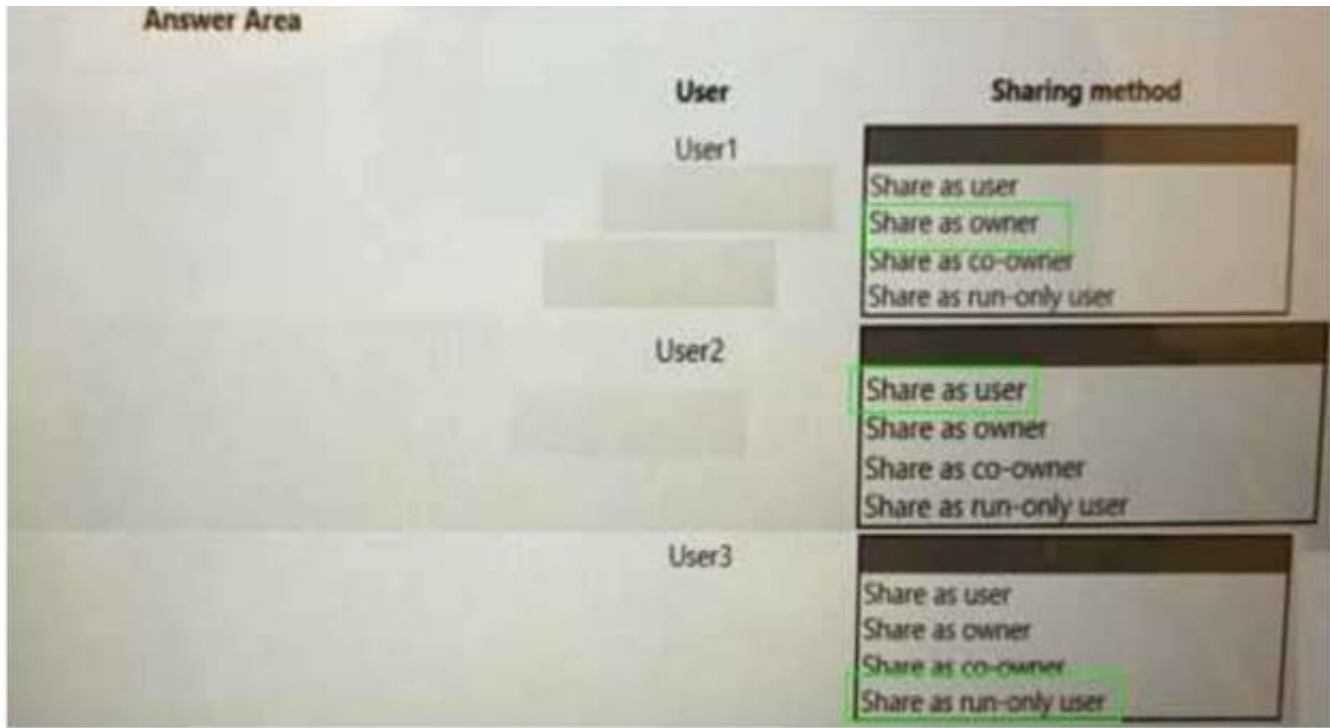
Answer Area

User	Sharing method
User1	<div><div>Share as user</div><div>Share as owner</div><div>Share as co-owner</div><div>Share as run-only user</div></div>
User2	<div><div>Share as user</div><div>Share as owner</div><div>Share as co-owner</div><div>Share as run-only user</div></div>
User3	<div><div>Share as user</div><div>Share as owner</div><div>Share as co-owner</div><div>Share as run-only user</div></div>

- A. Mastered
- B. Not Mastered

Answer: A

Explanation:



NEW QUESTION 5

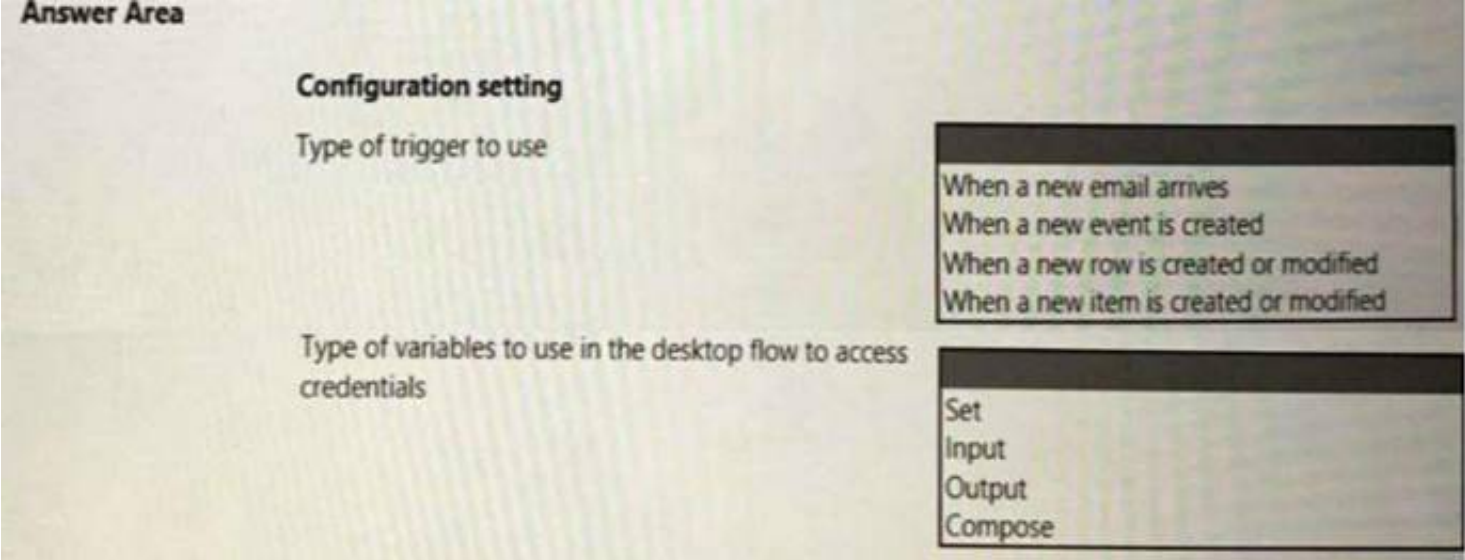
- (Exam Topic 2)
You need to package the automations. What should you do?

- A. Show dependencies within the solution.
- B. Remove unmanaged layers.
- C. Add required components to each item within the solution.
- D. Add existing components to the solution.

Answer: B

NEW QUESTION 6

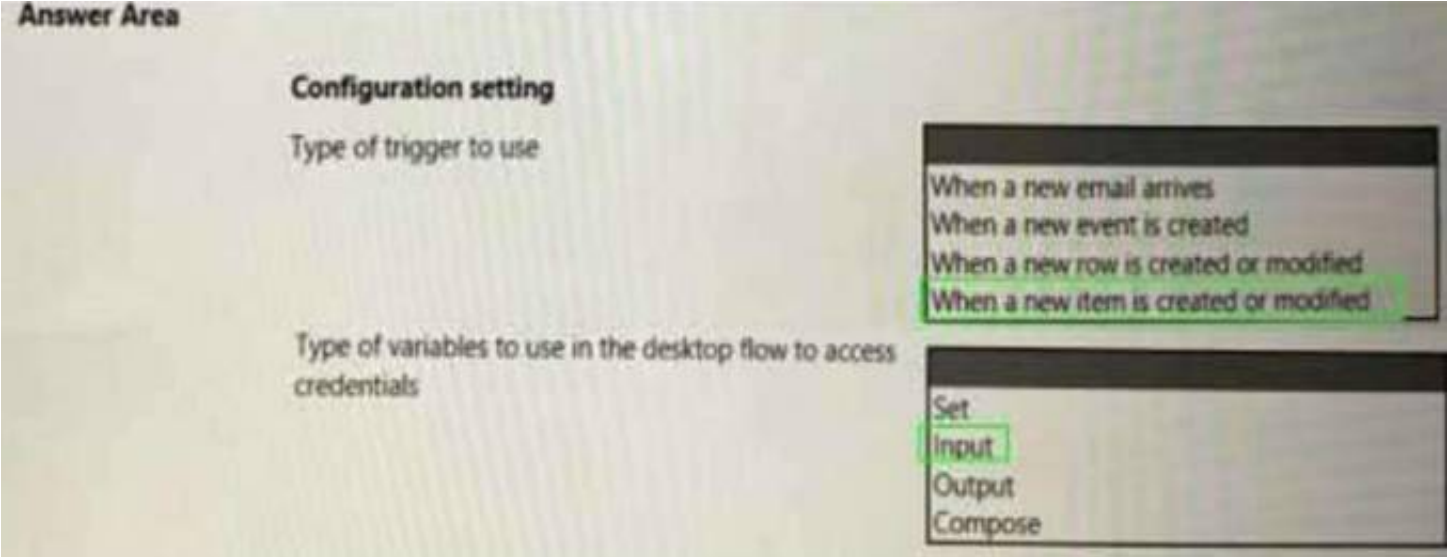
- (Exam Topic 2)
You need to configure the solution for the ERPDataOperations flow.
Which configuration values should you use? To answer, select the appropriate options in the answer area, NOTE: Each correct selection is worth one point.



- A. Mastered
- B. Not Mastered

Answer: A

Explanation:



NEW QUESTION 7

- (Exam Topic 2)

You need to resolve the issue reported with the RailStatusUpdater flow.

What are two possible ways to achieve the goal? Each correct answer presents a complete solution.

NOTE: Each correct selection is worth one point.

- A. Put the desktop flow action into a Do until loop
- B. Run until the desktop flow is successful.
- C. Call a separate child cloud flow to perform the desktop flow a second time.
- D. Create a duplicate action for the desktop flow and configure the duplicate action to run if the first desktop flow action fails.
- E. Create a duplicate action for the desktop flow to run after the first desktop flow.

Answer: A

NEW QUESTION 8

- (Exam Topic 3)

You are developing automation solutions that process sensitive employee data for a company. You plan to implement the sensitive variables feature in Power Automate for desktop.

What are three characteristics of the sensitive variables feature? Each correct answer presents a complete solution.

NOTE: Each correct selection is worth one point.

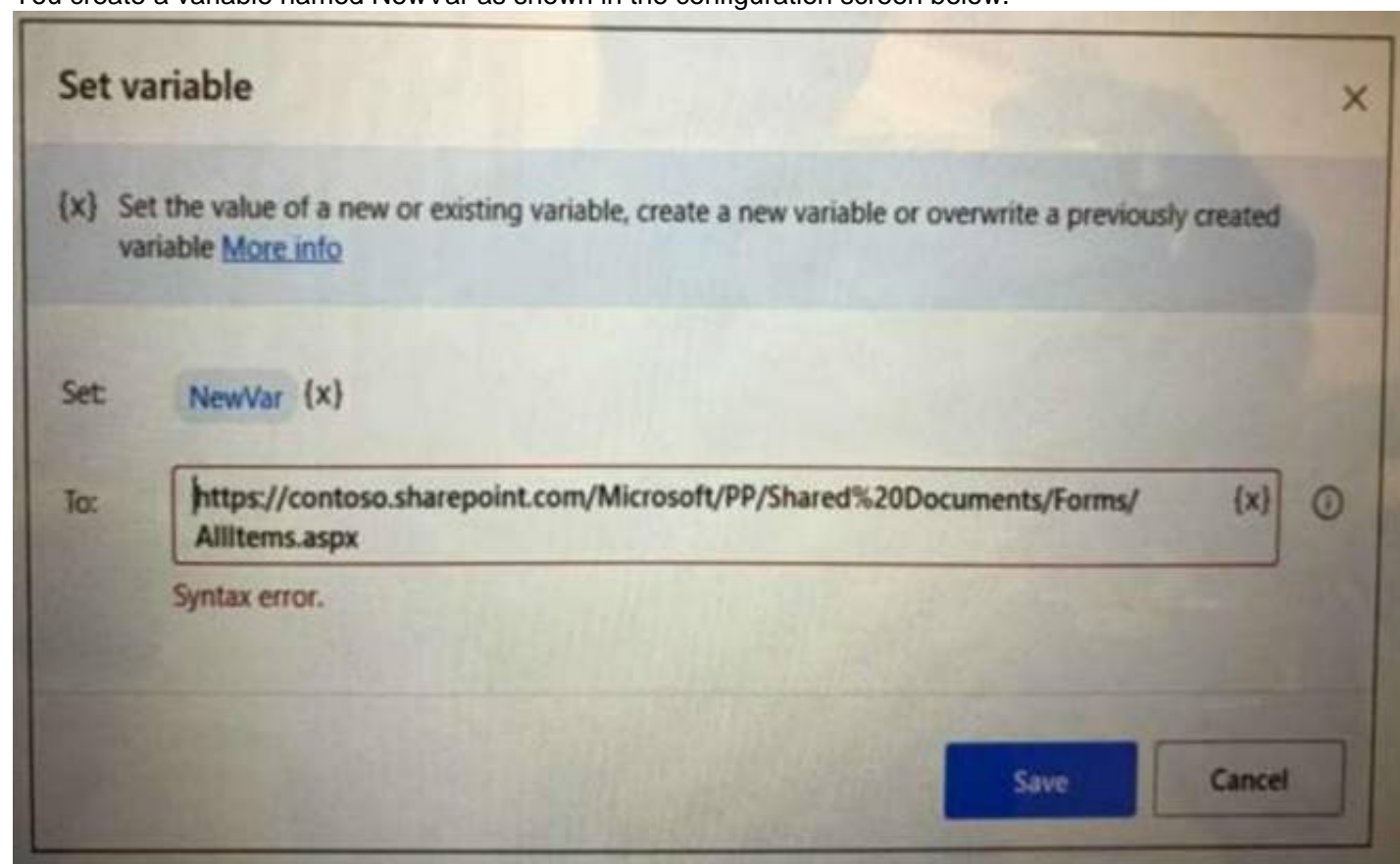
- A. Only variables that are passwords can be marked as sensitive.
- B. You can view the values of variables marked as sensitive within desktop flow logs by using the Microsoft Power Platform admin center.
- C. Sensitive variables are not visible within desktop flow logs in the Power Automate portal.
- D. You can mark any variable as sensitive.
- E. You can reference and manipulate variables that are marked as sensitive from within desktop flows.

Answer: ACD

NEW QUESTION 9

- (Exam Topic 3)

You create a variable named NewVar as shown in the configuration screen below.



You attempt to set the value of NewVar to the following URL:

<https://contoso.sharepoint.com/Microsoft/PP/Shared%20Documents/Forms/AllItems.aspx>

The Set variable page alerts you that there is a syntax error. You need to resolve the issue. What should you do?

- A. Escape the percent sign (%) with a back slash (\%).
- B. Replace the percent sign (%) with two percent signs (%%).
- C. Replace the forward slash characters (/) with two forward slash characters (//).
- D. Escape the forward slash characters (/) with a back slash (\/).

Answer: D

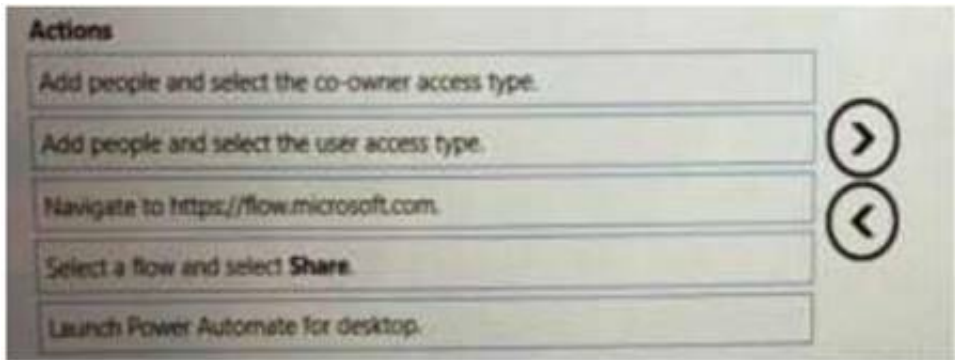
NEW QUESTION 10

- (Exam Topic 3)

You develop a desktop flow for a company.

You need to ensure that another user can modify the flow.

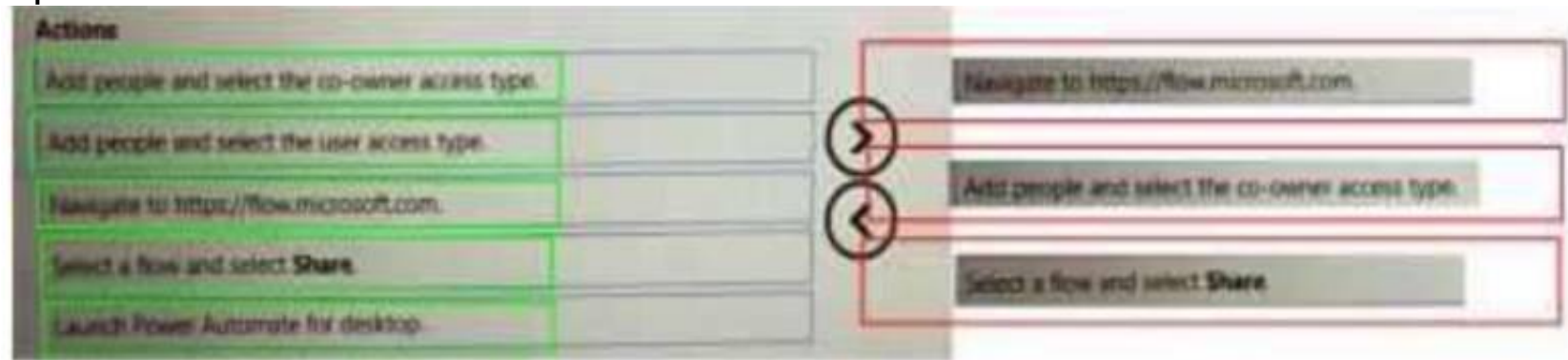
Which three actions should you perform in sequence? To answer, move the appropriate actions from the order.



- A. Mastered
- B. Not Mastered

Answer: A

Explanation:



NEW QUESTION 10

- (Exam Topic 3)

You are preparing to share a desktop flow. You need to share the flow with another user. Which two methods can you use? Each correct answer presents a complete solution.
NOTE: Each correct selection is worth one point.

- A. Share the desktop flow by using the Microsoft Power Platform admin center.
- B. Share the desktop flow by using the Power Automate porta
- C. Grant the user permissions to access the flow.
- D. Export a solution that contains the desktop flow and provide the solution to the user.
- E. Create a managed solution that contains the desktop flow and share the solution with another user.

Answer: CD

NEW QUESTION 13

- (Exam Topic 3)

You are developing a custom connector.
You need to create the definition for the connector.
Which features should you use? To answer, select the appropriate options in the answer area. NOTE: Each correct selection is worth one point.

Answer Area

Scenario	Feature
Define operations that users can perform.	<input type="checkbox"/> Code <input type="checkbox"/> Action <input type="checkbox"/> Policy <input type="checkbox"/> Trigger
Define actions that will be invoked by events.	<input type="checkbox"/> Code <input type="checkbox"/> Action <input type="checkbox"/> Policy <input type="checkbox"/> Trigger
Change the host URL for specific actions.	<input type="checkbox"/> Code <input type="checkbox"/> Action <input type="checkbox"/> Policy <input type="checkbox"/> Trigger
Extract data from responses by using regex expressions.	<input type="checkbox"/> Code <input type="checkbox"/> Action <input type="checkbox"/> Policy <input type="checkbox"/> Trigger

- A. Mastered
- B. Not Mastered

Answer: A

Explanation:

Answer Area

Scenario	Feature
Define operations that users can perform.	<div>Code</div> <div>Action</div> <div>Policy</div> <div>Trigger</div>
Define actions that will be invoked by events.	<div>Code</div> <div>Action</div> <div>Policy</div> <div>Trigger</div>
Change the host URL for specific actions.	<div>Code</div> <div>Action</div> <div>Policy</div> <div>Trigger</div>
Extract data from responses by using regex expressions.	<div>Code</div> <div>Action</div> <div>Policy</div> <div>Trigger</div>

NEW QUESTION 16

- (Exam Topic 3)
You are developing automation solutions for a company.
You need to use Microsoft Office scripts in a cloud flow to calculate the number of business days between two dates.
Which three actions should you perform in sequence?
To order, answer, move the appropriate actions from the list of actions to the answer area and arrange them in the correct order.

Actions

Answer area

In the Excel desktop app, navigate to the Automate tab.

Create and save a script.

Add and configure a Run script action.

Add a Compose action and use an expression.

In Microsoft Excel on the web, navigate to the Automate tab.

>

<

^

v

- A. Mastered
- B. Not Mastered

Answer: A

Explanation:

Actions

Answer area

In the Excel desktop app, navigate to the Automate tab.

Create and save a script.

Add and configure a Run script action.

Add a Compose action and use an expression.

In Microsoft Excel on the web, navigate to the Automate tab.

>

<

^

v

NEW QUESTION 17

- (Exam Topic 3)
A company uses Microsoft 365 apps. You are building a flow that is triggered when a new email arrives.
If an email message contains a Microsoft Excel workbook attachment the solution must post the Excel data to an external customer relationship management (CRM) system that runs on a user's workstation. The CRM system is not accessible by using an API.
You need to design the solution.
Which three actions should you perform? Each correct answer presents part of the solution. NOTE: Each correct selection is worth one point.

- A. Implement the Create file action from the OneDrive connector in a cloud flow.
- B. Create a desktop flow.

- C. Implement the When a new email arrives trigger in a cloud flow.
- D. Implement the Retrieve email messages action from a desktop flow.
- E. Create a desktop flow and define an input variable of type file.

Answer: ACE

NEW QUESTION 19

- (Exam Topic 3)

You are developing a cloud flow.

The flow must be able to query several Azure endpoints and must use standard actions where possible. You need to configure the flow.

Which actions should you use? To answer, select the appropriate options in the answer area. NOTE: Each correct selection is worth one point.

Requirement	Action
Issue POST requests to the Microsoft Graph API by using application permissions.	HTTP HTTP with Azure AD Send an HTTP request to SharePoint Office 365 groups send an HTTP request
Issue GET requests to the Microsoft Graph API by using delegated permissions.	HTTP HTTP with Azure AD Send an HTTP request to SharePoint Office 365 groups send an HTTP request
Issue GET requests to the SharePoint REST API by using delegated permissions.	HTTP HTTP with Azure AD Send an HTTP request to SharePoint Office 365 groups send an HTTP request
Issue GET requests to the SharePoint REST API by using delegated permissions.	HTTP HTTP with Azure AD Send an HTTP request to SharePoint Office 365 groups send an HTTP request
Issue POST requests to SharePoint REST API by using application permissions.	HTTP HTTP with Azure AD Send an HTTP request to SharePoint Office 365 groups send an HTTP request

- A. Mastered
- B. Not Mastered

Answer: A

Explanation:

Requirement	Action
Issue POST requests to the Microsoft Graph API by using application permissions.	HTTP HTTP with Azure AD Send an HTTP request to SharePoint Office 365 groups send an HTTP request
Issue GET requests to the Microsoft Graph API by using delegated permissions.	HTTP HTTP with Azure AD Send an HTTP request to SharePoint Office 365 groups send an HTTP request
Issue GET requests to the SharePoint REST API by using delegated permissions.	HTTP HTTP with Azure AD Send an HTTP request to SharePoint Office 365 groups send an HTTP request
Issue GET requests to the SharePoint REST API by using delegated permissions.	HTTP HTTP with Azure AD Send an HTTP request to SharePoint Office 365 groups send an HTTP request
Issue POST requests to SharePoint REST API by using application permissions.	HTTP HTTP with Azure AD Send an HTTP request to SharePoint Office 365 groups send an HTTP request

NEW QUESTION 22

- (Exam Topic 3)

You plan to use a cloud flow.
The flow must be contained within a solution. You need to add the cloud flow to a solution.
Solution; Create a scheduled cloud flow outside of a solution. Add the cloud flow into a managed solution. Does the solution meet the goal?

A. Yes
B. No

Answer: A

NEW QUESTION 26

- (Exam Topic 3)
You are developing a solution for a medical practice. The solution must use an artificial intelligence (AI) model to evaluate medical X-ray images and detect broken bones.
You need to create the AI model for the solution. Solution: Use Azure Computer Vision to create the model. Does the solution meet the goal?

A. Yes
B. No

Answer: B

NEW QUESTION 27

- (Exam Topic 3)
You create several desktop flows. Each flow will run on a single user's device. You need to determine how Power Automate will orchestrate the flows. Which three rules will Power Automate apply? Each correct answer presents a complete solution. NOTE: Each correct selection is worth one point.

A. All the flows are run simultaneously.
B. The next flow will run when each run completes based on the priority and the time requested.
C. The first flow runs on the target device based on the priority and the time requested.
D. The first flow runs on the target device based on Next to run status and time requested.
E. The first and last flows run based on the priority and the time requested.
F. The remaining flows are queued.

Answer: AEF

NEW QUESTION 32

- (Exam Topic 3)
You are developing a cloud flow.
The flow must be able to query several Azure endpoints and must use standard actions where possible. You need to configure the flow.
Which actions should you use? To answer, select the appropriate options in the answer area. NOTE: Each correct selection is worth one point.

Answer Area

Requirement	Action
Issue POST requests to the Microsoft Graph API by using application permissions.	<div>HTTP</div> <div>HTTP with Azure AD</div> <div>Send an HTTP request to SharePoint</div> <div>Office 365 groups send an HTTP request</div>
Issue GET requests to the Microsoft Graph API by using delegated permissions.	<div>HTTP</div> <div>HTTP with Azure AD</div> <div>Send an HTTP request to SharePoint</div> <div>Office 365 groups send an HTTP request</div>
Issue POST requests to Office 365 Management APIs by using delegated permissions.	<div>HTTP</div> <div>HTTP with Azure AD</div> <div>Send an HTTP request to SharePoint</div> <div>Office 365 groups send an HTTP request</div>
Issue GET requests to the SharePoint REST API by using delegated permissions.	<div>HTTP</div> <div>HTTP with Azure AD</div> <div>Send an HTTP request to SharePoint</div> <div>Office 365 groups send an HTTP request</div>
Issue POST requests to SharePoint REST API by using application permissions.	<div>HTTP</div> <div>HTTP with Azure AD</div> <div>Send an HTTP request to SharePoint</div> <div>Office 365 groups send an HTTP request</div>

A. Mastered
B. Not Mastered

Answer: A

Explanation:

Requirement	Action
Issue POST requests to the Microsoft Graph API by using application permissions.	HTTP HTTP with Azure AD Send an HTTP request to SharePoint Office 365 groups send an HTTP request
Issue GET requests to the Microsoft Graph API by using delegated permissions.	HTTP HTTP with Azure AD Send an HTTP request to SharePoint Office 365 groups send an HTTP request
Issue POST requests to Office 365 Management APIs by using delegated permissions.	HTTP HTTP with Azure AD Send an HTTP request to SharePoint Office 365 groups send an HTTP request
Issue GET requests to the SharePoint REST API by using delegated permissions.	HTTP HTTP with Azure AD Send an HTTP request to SharePoint Office 365 groups send an HTTP request
Issue POST requests to SharePoint REST API by using application permissions.	HTTP HTTP with Azure AD Send an HTTP request to SharePoint Office 365 groups send an HTTP request

NEW QUESTION 35

- (Exam Topic 3)

You are developing a cloud flow.

You write expressions for the following JSON object. (Line numbers are included for reference only.)

```
01 {  
02   "customerNumber": 10091,  
03   "customerPhones": [  
04     "011-2345213",  
05     "0114456129"  
06   ]  
07 }
```

The flow parses JSON data by using the following schema;

```
09 {
10   "type": "object",
11   "properties": {
12     "customerName": {
13       "type": [
14         "string",
15         "null"
16       ]
17     },
18     "customerNumber": {
19       "type": "integer"
20     },
21     "customerPhones": {
22       "type": "array",
23       "minItems": 1,
24       "items": {
25         "type": "string"
26       }
27     }
28   }
29 }
```

For each of the following statements, select Yes if the statement is true. Otherwise, select No. NOTE: Each correct selection is worth one point.

Answer Area

Statements	Yes	No
The expression <code>empty(body('Parse_JSON')['customerName'])</code> returns true.	<input type="radio"/>	<input type="radio"/>
The expression <code>concat(body('Parse_JSON').customerName, ': ', body('Parse_JSON').customerNumber)</code> returns 10091.	<input type="radio"/>	<input type="radio"/>
The expression <code>equals(body('Parse_JSON')?.customerPhones[2], '')</code> returns true.	<input type="radio"/>	<input type="radio"/>
The expression <code>int(body('Parse_JSON')?['customerPhones']?[1])</code> returns 114456129.	<input type="radio"/>	<input type="radio"/>

- A. Mastered
- B. Not Mastered

Answer: A

Explanation:

Answer Area

Statements	Yes	No
The expression <code>empty(body('Parse_JSON')['customerName'])</code> returns true.	<input checked="" type="radio"/>	<input type="radio"/>
The expression <code>concat(body('Parse_JSON').customerName, ': ', body('Parse_JSON').customerNumber)</code> returns 10091.	<input checked="" type="radio"/>	<input type="radio"/>
The expression <code>equals(body('Parse_JSON')?.customerPhones[2], '')</code> returns true.	<input checked="" type="radio"/>	<input type="radio"/>
The expression <code>int(body('Parse_JSON')?['customerPhones']?[1])</code> returns 114456129.	<input type="radio"/>	<input checked="" type="radio"/>

NEW QUESTION 39

- (Exam Topic 3)

You have an automation solution that uses a desktop flow. The flow reads data from a file that is stored on a user's machine and writes the data to an application. You import the solution to an environment that is connected to another user's machine.

The user reports that the flow fails. An alert indicates that the path to a file does not exist. You confirm that the file is present on the user's desktop. You need to resolve the issue. What should you do?

- A. Move the file to the user's documents folder.
- B. Move the file to the user's OneDrive storage.
- C. Delete and recreate the file.
- D. Change the location of the file to a specific path that is not dependent on the signed-in user.

Answer: A

NEW QUESTION 41

- (Exam Topic 3)

You have a desktop flow that interacts with a desktop-based application. You plan to enter data into each field by using the Send keys action. You test the flow. The Send keys action runs successfully but the input fields are empty. You need to add a step before the Send keys action to resolve the issue. Which two steps can you use? Each correct answer presents a complete solution. NOTE: Each correct selection is worth one point.

- A. Use the Wait for window action.
- B. Set the key state.
- C. Use the Focus window action.
- D. Set the window state.
- E. Use the Wait for mouse action

Answer: DE

NEW QUESTION 46

- (Exam Topic 3)

You are automating a form on a website. The website uses the following HI ML markup to define each field on the form:

```
<div _ngcontent-c1="" class="col s6 m6 l6">
  <div class="ng-invalid ng-dirty ng-touched">
    <label>Field1</label><input ng-reflect-name="labelField1" class="ng-pristine ng-invalid ng-touched">
  </div>
</div>
```

The label for each field is unique in the form. You need to write data to the form. For each of the following statements, select Yes if the statement is true. Otherwise, select No. NOTE: Each correct selection is worth one point.

Answer Area

Statement	Yes	No
You configure the following selector: <code>input[ng-reflect-name="labelField1"]</code> The automation will add data to the form.	<input type="radio"/>	<input type="radio"/>
You configure the following selector: <code>div:has(label:contains("Field1")) > input</code> The automation will add data to the form.	<input type="radio"/>	<input type="radio"/>
You add the Run JavaScript function on web page action to the flow: <pre>function ExecuteScript() { \$("div:contains('Field1') > input") .val("Field's 1 value") }</pre> The action adds data to the form.	<input type="radio"/>	<input type="radio"/>

- A. Mastered
- B. Not Mastered

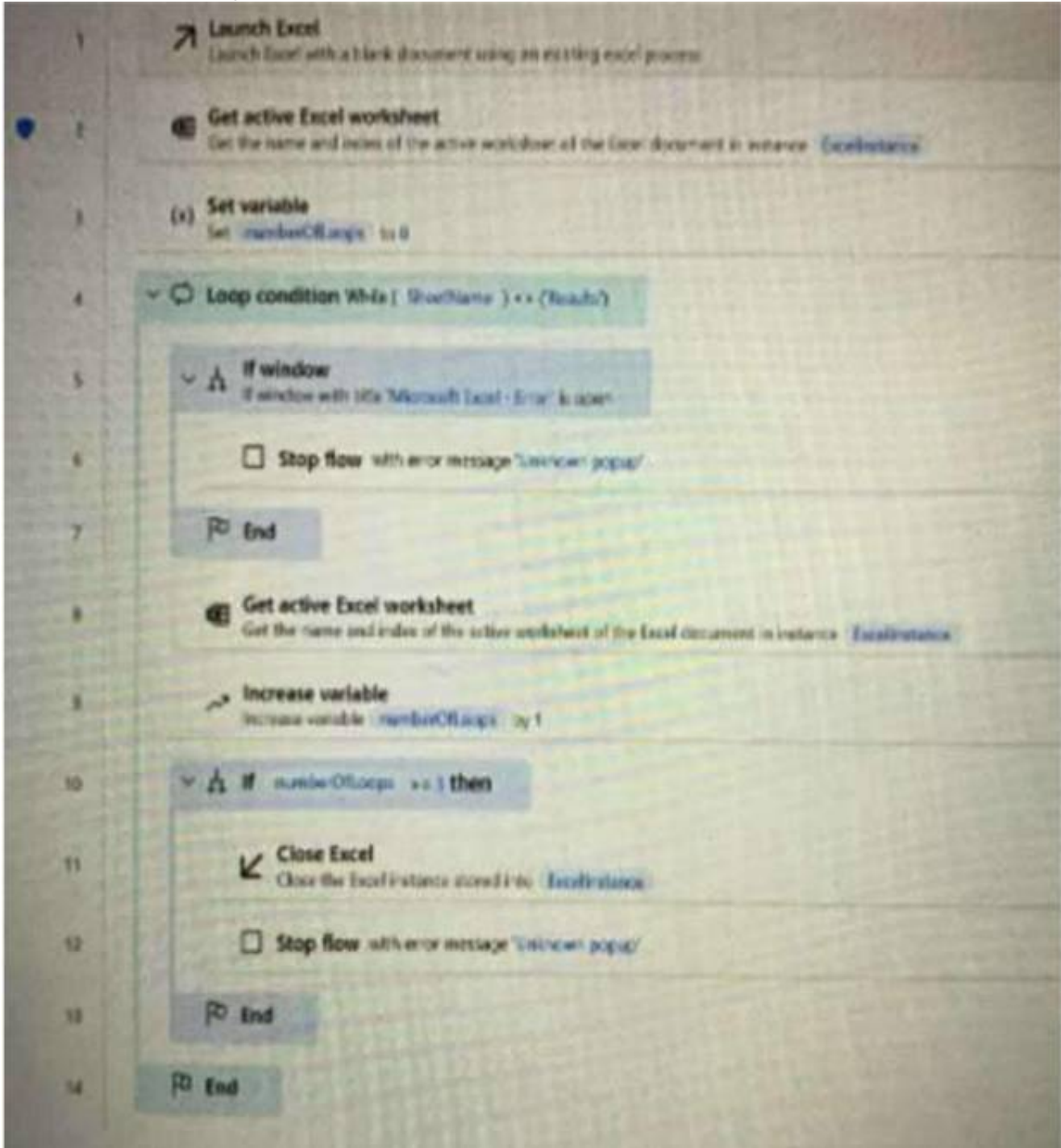
Answer: A

Explanation:

Answer Area

Statement	Yes	No
You configure the following selector: <code>input[ng-reflect-name="labelField"]</code> The automation will add data to the form.	<input checked="" type="radio"/>	<input type="radio"/>
You configure the following selector: <code>div:has(label:contains("Field1")) > input</code> The automation will add data to the form.	<input checked="" type="radio"/>	<input type="radio"/>
You add the Run JavaScript function on web page action to the flow: <pre>function ExecuteScript() { \$("div:contains('Field1') > input") .val("Field's 1 value") }</pre>	<input type="radio"/>	<input checked="" type="radio"/>
The action adds data to the form.		

NEW QUESTION 47
 - (Exam Topic 3)
 You create the following flow:



Questions	Response
What does the icon to the left of line 2 represent?	<div>There is a breakpoint in the code.</div> <div>The action processes sensitive data.</div> <div>The action includes action-level error handling.</div>
When will the loop condition at line 4 initialize?	<div>When the name of the active Excel worksheet is Results.</div> <div>When the name of the active Excel worksheet is anything other than Results.</div>
At which point will the flow stop?	<div>A user opens another Excel window on their desktop.</div> <div>The number of iterations through the loop equals or exceeds five.</div>

- A. Mastered
- B. Not Mastered

Answer: A

Explanation:

Questions	Response
What does the icon to the left of line 2 represent?	<div>There is a breakpoint in the code.</div> <div>The action processes sensitive data.</div> <div>The action includes action-level error handling.</div>
When will the loop condition at line 4 initialize?	<div>When the name of the active Excel worksheet is Results.</div> <div>When the name of the active Excel worksheet is anything other than Results.</div>
At which point will the flow stop?	<div>A user opens another Excel window on their desktop.</div> <div>The number of iterations through the loop equals or exceeds five.</div>

NEW QUESTION 50

- (Exam Topic 3)

You are creating a cloud flow that will use two Update Row actions to interact with Microsoft Dataverse. Neither of these actions are dependent on each other. You must minimize the amount of processing time required to complete the flow. You need to implement the actions in the cloud flow.

Solution: Create two sequential Update Row actions. Does the solution meet the goal?

- A. Yes
- B. No

Answer: A

NEW QUESTION 51

- (Exam Topic 3)

You develop a Microsoft Power Platform solution for a client.

You must test the solution in a user acceptance testing (UAT) environment before deploying the solution to production. You must ensure that the configurations for the UAT and production environments are identical. You must minimize administrative effort.

You need to ensure that the environments are identical. Which Microsoft Power Platform feature should you use?

- A. Copy environment
- B. Edit environment properties
- C. Move environment
- D. Reset environment
- E. Restore environment

Answer: AB

NEW QUESTION 53

- (Exam Topic 3)

You are developing a desktop flow.

You need to include an IF statement that contains AND logic within the flow. Which expression should you use for the IF statement?

A)

IF \$'' '%IsEmpty(Variable1)% AND %IsEmpty(Variable2)%'' = \$'''True'''

B)

IF IsEmpty(IsEmpty(Variable1) AND IsEmpty(Variable2))

C)

IF IsEmpty(Variable1 AND Variable2)

D)

IF (IsEmpty(Variable1) OR IsEmpty(Variable2)) = \$'''True'''

E)

IF (IsEmpty(Variable1) AND IsEmpty(Variable2)) = \$'''True'''

- A. Option A
- B. Option B
- C. Option C
- D. Option D

Answer: C

NEW QUESTION 57

- (Exam Topic 3)

You develop automation solutions for a company.

You need to configure variables for a cloud flow solution.

Which types of variables should you use for each type of data? To answer, select the appropriate options in the answer area.

NOTE: Each correct selection is worth one point.

Answer Area

Requirement	Variable type
Store a list of names in JSON format.	<div><div>Object</div><div>Float</div><div>Integer</div><div>Array</div></div>
Store the URL for a website.	<div><div>Object</div><div>String</div><div>Float</div><div>Integer</div><div>Array</div></div>
Store a date using the following pattern: yyyy-MM-dd.	<div><div>Object</div><div>String</div><div>Float</div><div>Integer</div><div>Array</div></div>
Store a price for a product.	<div><div>Object</div><div>String</div><div>Float</div><div>Integer</div><div>Array</div></div>

- A. Mastered
- B. Not Mastered

Answer: A

Explanation:

Answer Area

Requirement	Variable type
Store a list of names in JSON format.	<div><div>Object</div><div>Float</div><div>Integer</div><div>Array</div></div>
Store the URL for a website.	<div><div>Object</div><div>String</div><div>Float</div><div>Integer</div><div>Array</div></div>
Store a date using the following pattern: yyyy-MM-dd.	<div><div>Object</div><div>String</div><div>Float</div><div>Integer</div><div>Array</div></div>
Store a price for a product.	<div><div>Object</div><div>String</div><div>Float</div><div>Integer</div><div>Array</div></div>

NEW QUESTION 59

.....

Thank You for Trying Our Product

We offer two products:

1st - We have Practice Tests Software with Actual Exam Questions

2nd - Questions and Answers in PDF Format

PL-500 Practice Exam Features:

- * PL-500 Questions and Answers Updated Frequently
- * PL-500 Practice Questions Verified by Expert Senior Certified Staff
- * PL-500 Most Realistic Questions that Guarantee you a Pass on Your First Try
- * PL-500 Practice Test Questions in Multiple Choice Formats and Updates for 1 Year

100% Actual & Verified — Instant Download, Please Click
[Order The PL-500 Practice Test Here](#)