

Microsoft

Exam Questions MD-102

Endpoint Administrator



NEW QUESTION 1

- (Exam Topic 4)

You have a Microsoft 365 subscription that uses Microsoft Intune Suite. You use Microsoft Intune to manage Windows 11 devices. You need to implement passwordless authentication that requires users to use number matching Which authentication method should you use?

- A. Microsoft Authenticator
- B. voice calls
- C. FIDO2 security keys
- D. text messages

Answer: A

NEW QUESTION 2

- (Exam Topic 4)

You have a Microsoft 365 subscription that contains 100 devices enrolled in Microsoft Intune. You need to review the startup processes and how often each device restarts. What should you use?

- A. Endpoint analytics
- B. Intune Data Warehouse
- C. Azure Monitor
- D. Device Management

Answer: B

NEW QUESTION 3

- (Exam Topic 4)

You have computers that run Windows 11 Pro. The computers are joined to Azure AD and enrolled in Microsoft Intune. You need to upgrade the computers to Windows 11 Enterprise. What should you configure in Intune?

- A. a device compliance policy
- B. a device cleanup rule
- C. a device enrollment policy
- D. a device configuration profile

Answer: D

NEW QUESTION 4

- (Exam Topic 4)

You have 100 computers that run Windows 10. You have no servers. All the computers are joined to Microsoft Azure Active Directory (Azure AD). The computers have different update settings, and some computers are configured for manual updates. You need to configure Windows Update. The solution must meet the following requirements:

- > The configuration must be managed from a central location.
- > Internet traffic must be minimized.
- > Costs must be minimized.

How should you configure Windows Update? To answer, select the appropriate options in the answer area.

NOTE: Each correct selection is worth one point.

Windows Update technology to use:

Windows Server Update Services (WSUS)
Microsoft Endpoint Configuration Manager
Windows Update for Business

Manage the configuration by using:

A Group Policy object (GPO)
Microsoft Endpoint Configuration Manager
Microsoft Intune

Manage the traffic by using:

Delivery Optimization
BranchCache
Peer cache

- A. Mastered
- B. Not Mastered

Answer: A

Explanation:

Box 1: Windows Server Update Services (WSUS)

Windows Server Update Services (WSUS) enables information technology administrators to deploy the latest Microsoft product updates. You can use WSUS to fully manage the distribution of updates that are released through Microsoft Update to computers on your network.

Windows Server Update Services is a built-in server role that includes the following enhancements: Can be added and removed by using the Server Manager Includes Windows PowerShell cmdlets to manage the most important administrative tasks in WSUS Etc.

Box 2: A Group Policy object

In an Active Directory environment, you can use Group Policy to define how computers and users can interact with Windows Update to obtain automatic updates from Windows Server Update Services (WSUS).

Box 3: BranchCache

BranchCache is a bandwidth-optimization feature that has been available since the Windows Server 2008 R2 and Windows 7 operating systems. Each client has a cache and acts as an alternate source for content that devices on its own network request. Windows Server Update Services (WSUS) and Microsoft Endpoint Manager can use BranchCache to optimize network bandwidth during update deployment, and it's easy to configure for either of them. BranchCache has two operating modes: Distributed Cache mode and Hosted Cache mode.

Reference: <https://docs.microsoft.com/en-us/windows/deployment/update/waas-branchcache> <https://docs.microsoft.com/en-us/windows-server/administration/windows-server-update-services/deploy/4-conf>

NEW QUESTION 5

- (Exam Topic 4)

You have an Azure AD tenant named contoso.com.

You need to ensure that users are not added automatically to the local Administrators group when they join their Windows 11 device to contoso.com.

What should you configure?

- A. Windows Autopilot
- B. provisioning packages for Windows
- C. Security defaults in Azure AD
- D. Device settings in Azure AD

Answer: D

Explanation:

To ensure that users are not added automatically to the local Administrators group when they join their Windows 11 device to contoso.com, you should configure the Device settings in Azure AD. The Device settings allow you to manage which users can join devices to Azure AD and whether they are added as local administrators or standard users. By default, users who join devices to Azure AD are added to the local Administrators group, but you can change this setting to None or Selected¹.

The other options are not relevant for this scenario because:

- Windows Autopilot is a service that allows you to pre-configure new devices and enroll them automatically to Azure AD and Microsoft Intune. It does not control the local administrator role of the users who join the devices².
- Provisioning packages for Windows are files that contain custom settings and policies that can be applied to Windows devices during the setup process. They do not affect the Azure AD join process or the local administrator role of the users³.
- Security defaults in Azure AD are a set of basic identity security mechanisms that are enabled by default to protect your organization from common attacks. They do not include any settings related to device management or local administrator role⁴.

References: Manage device identities using the Microsoft Entra admin center, Windows Autopilot, Provisioning packages for Windows 10, What are security defaults?

NEW QUESTION 6

- (Exam Topic 4)

You have a Microsoft Azure subscription that contains an Azure Log Analytics workspace.

You deploy a new computer named Computer1 that runs Windows 10. Computer1 is in a workgroup. You need to ensure that you can use Log Analytics to query events from Computer1.

What should you do on Computer1?

- A. Join Azure AD.
- B. Configure Windows Defender Firewall
- C. Create an event subscription.
- D. Install the Azure Monitor Agent.

Answer: D

NEW QUESTION 7

- (Exam Topic 4)

You create a Windows Autopilot deployment profile.

You need to configure the profile settings to meet the following requirements:

- Include the hardware serial number in the computer name.

Which two settings should you configure? To answer, select the appropriate settings in the answer area.

NOTE: Each correct selection is worth one point.

Answer Area

Create profile ...

Windows PC

✓ Basics **2 Out-of-box experience (OOBE)** 3 Assignments 4 Review + create

Configure the out-of-box experience for your Autopilot devices

Deployment mode *

ⓘ

User-Driven

▼

Join to Azure AD as *

ⓘ

Azure AD joined

▼

Microsoft Software License Terms ⓘ

Show

Hide

ⓘ

 important information about hiding license terms

Privacy settings ⓘ

Show

Hide

ⓘ

 The default value for diagnostic data collection has changed for devices running Windows 10, version 1903 and later. [Learn more](#)

Hide change account options ⓘ

Show

Hide

User account type ⓘ

Administrator

Standard

Allow White Glove OOBE ⓘ

No

Yes

Language (Region) ⓘ

Operating system default

▼

Automatically configure keyboard ⓘ

No

Yes

Apply device name template ⓘ

No

Yes

- A. Mastered
B. Not Mastered

Answer: A

Explanation:

Reference:
<https://docs.microsoft.com/en-us/mem/autopilot/profiles>

NEW QUESTION 8

- (Exam Topic 4)

You have a Microsoft 365 subscription that uses Microsoft Intune.
You plan to use Windows Autopilot to provision 25 Windows 11 devices. You need to meet the following requirements during device provisioning:

- Display the progress of app and profile deployments.
- Join the devices to Azure AD.

What should you configure to meet each requirement? To answer drag the appropriate settings to the correct requirements. Each setting may be used once, more than once, or not at all. You may need to drag the split bar between panes or scroll to view content.
NOTE: Each correct selection is worth one point.

Settings

CNAME Validation

Co-management Settings

Deployment Profiles

Enrollment notifications

Enrollment Status Page

Answer Area

Display the progress of app and profile deployments:

Join the devices to Azure AD:

- A. Mastered
B. Not Mastered

Answer: A

Explanation:

Settings

CNAME Validation

Co-management Settings

Deployment Profiles

Enrollment notifications

Enrollment Status Page

Answer Area

Display the progress of app and profile deployments:

Enrollment Status Page

Join the devices to Azure AD:

Deployment Profiles

NEW QUESTION 9

- (Exam Topic 4)
You have a Microsoft Intune subscription that is configured to use a PFX certificate connector to an on-premises Enterprise certification authority (CA). You need to use Intune to configure autoenrollment for Android devices by using public key pair (PKCS) certificates. Which three actions should you perform in sequence? To answer, move the appropriate actions from the list of actions to the answer area and arrange them in the correct order.

Actions

Obtain the root certificate.

From the Microsoft Endpoint Manager admin center, create a trusted certificate configuration profile.

From the Enterprise CA, configure certificate managers.

From the Microsoft Endpoint Manager admin center, configure enrollment restrictions.

From the Microsoft Endpoint Manager admin center, create a PKCS certificate configuration profile.

Answer Area

- A. Mastered
- B. Not Mastered

Answer: A

Explanation:

Graphical user interface, text, application, email Description automatically generated
Reference:
<https://docs.microsoft.com/en-us/mem/intune/protect/certificates-pfx-configure>

NEW QUESTION 10

- (Exam Topic 4)
You have a Microsoft 365 E5 subscription that uses Microsoft Intune. You have the Windows 11 devices shown in the following table.

Name	Member of	BitLocker Drive Encryption (BitLocker)
Device1	Group1	Enabled
Device2	Group1, Group3	Disabled
Device3	Group1, Group2	Enabled

You deploy the device compliance policy shown in the exhibit. (Click the Exhibit tab.)

Basics [Edit](#)

Name	Policy1
Description	--
Platform	Windows 10 and later
Profile type	Windows 10/11 compliance policy

Compliance settings [Edit](#)

Device Health

Require BitLocker	Require
-------------------	---------

Actions for noncompliance [Edit](#)

Action	Schedule	Message template	Additional recipients (via email)
Mark device noncompliant	Immediately		

Scope tags [Edit](#)

Default

Assignments [Edit](#)

Included groups

Group
Group1
Group3

Excluded groups

Group
Group2

For each of the following statements, select Yes if the statement is true. Otherwise, select No.
NOTE: Each correct selection is worth one point.

Answer Area

Statements	Yes	No
Device1 will have Policy1 assigned and will be marked as compliant.	<input type="radio"/>	<input type="radio"/>
Device2 will have Policy1 assigned and will be marked as compliant.	<input type="radio"/>	<input type="radio"/>
Device3 will have Policy1 assigned and will be marked as compliant.	<input type="radio"/>	<input type="radio"/>

- A. Mastered
- B. Not Mastered

Answer: A

Explanation:

Answer Area

Statements	Yes	No
Device1 will have Policy1 assigned and will be marked as compliant.	<input checked="" type="radio"/>	<input type="radio"/>
Device2 will have Policy1 assigned and will be marked as compliant.	<input type="radio"/>	<input checked="" type="radio"/>
Device3 will have Policy1 assigned and will be marked as compliant.	<input type="radio"/>	<input checked="" type="radio"/>

NEW QUESTION 10

- (Exam Topic 4)
You have a Microsoft 365 E5 subscription that contains 100 iOS devices enrolled in Microsoft Intune. You need to deploy a custom line-of-business (LOB) app to the devices by using Intune.
Which extension should you select for the app package file?

- A. .intunemac
- B. apk
- C. .ipa
- D. .appx

Answer: C

Explanation:
iOS/iPadOS LOB apps: Select Line-of-business app as the app type, select the App package file, and then enter an iOS/iPadOS installation file with the extension .ipa.
Reference:
<https://docs.microsoft.com/en-us/mem/intune/apps/apps-add>

NEW QUESTION 15

- (Exam Topic 4)
You have a Microsoft 365 subscription that contains the devices shown in the following table.

Name	Platform
Device1	Windows 10
Device2	iOS

You plan to enroll the devices in Microsoft Intune.
How often will the compliance policy check-ins run after each device is enrolled in Intune? To answer, select the appropriate options in the answer area.
NOTE: Each correct selection is worth one point.

Device1:

Every 15 minutes for one hour, and then every eight hours
Every five minutes for 15 minutes, then every 15 minutes for two hours, and then every eight hours
Every three minutes for 15 minutes, then every 15 minutes for two hours, and then every eight hours

Device2:

Every 15 minutes for one hour, and then every eight hours
Every five minutes for 15 minutes, then every 15 minutes for two hours, and then every eight hours
Every three minutes for 15 minutes, then every 15 minutes for two hours, and then every eight hours

- A. Mastered
- B. Not Mastered

Answer: A

Explanation:
Box 1: Every three minutes for 15 minutes, then every 15 minutes for two hours, and then around every eight hours
If devices recently enroll, then the compliance, non-compliance, and configuration check-in runs more frequently. The check-ins are estimated at:
Windows 10: Every 3 minutes for 15 minutes, then every 15 minutes for 2 hours, and then around every 8 hours
Graphical user interface, text, application, email Description automatically generated

Platform	Frequency
iOS/iPadOS	Every 15 minutes for 1 hour, and then around every 8 hours
macOS	Every 15 minutes for 1 hour, and then around every 8 hours
Android	Every 3 minutes for 15 minutes, then every 15 minutes for 2 hours, and then around every 8 hours
Windows 10/11 PCs enrolled as devices	Every 3 minutes for 15 minutes, then every 15 minutes for 2 hours, and then around every 8 hours
Windows 8.1	Every 5 minutes for 15 minutes, then every 15 minutes for 2 hours, and then around every 8 hours

Box 2: Every 15 minutes for one hour, and then every eight hours
iOS/iPadOS: Every 15 minutes for 1 hour, and then around every 8 hours
Reference: <https://docs.microsoft.com/en-us/mem/intune/configuration/device-profile-troubleshoot>

NEW QUESTION 16

- (Exam Topic 4)

You have an Azure AD group named Group1. Group1 contains two Windows 10 Enterprise devices named Device1 and Device2. You create a device configuration profile named Profile1. You assign Profile1 to Group1. You need to ensure that Profile1 applies to Device1 only. What should you modify in Profile1?

- A. Assignments
- B. Settings
- C. Scope (Tags)
- D. Applicability Rules

Answer: D

Explanation:

To ensure that Profile1 applies to Device1 only, you need to modify the Applicability Rules in Profile1. You can use applicability rules to filter which devices receive a profile based on criteria such as device model, manufacturer, or operating system version. You can create an applicability rule that matches Device1's properties and excludes Device2's properties. References:

<https://docs.microsoft.com/en-us/mem/intune/configuration/device-profile-assign#applicability-rules>

NEW QUESTION 18

- (Exam Topic 4)

You manage 1,000 devices by using Microsoft Intune. You review the Device compliance trends report. For how long will the report display trend data?

- A. 30 days
- B. 60 days
- C. 90 days
- D. 365 days

Answer: B

Explanation:

The Device compliance trends report shows the number of devices that are compliant, noncompliant, and not evaluated over time. The report displays trend data for the last 60 days by default, but you can change the time range to view data for the last 7, 14, or 30 days as well. The report does not show data for more than 60

days. References: [Device compliance trends report]

NEW QUESTION 21

- (Exam Topic 4)

You have a computer that runs Windows 10 and contains two local users named User1 and User2. You need to ensure that the users can perform the following actions:

- User1 must be able to adjust the date and time.
- User2 must be able to clear Windows logs.

The solution must use the principle of least privilege.

To which group should you add each user? To answer, drag the appropriate groups to the correct users. Each group may be used once, more than once, or not at all. You may need to drag the split bar between panes or scroll to view content.

NOTE: Each correct selection is worth one point.

Groups

Administrators

Event Log Readers

Performance Log Users

Power Users

System Managed Accounts Group

Answer Area

User1:

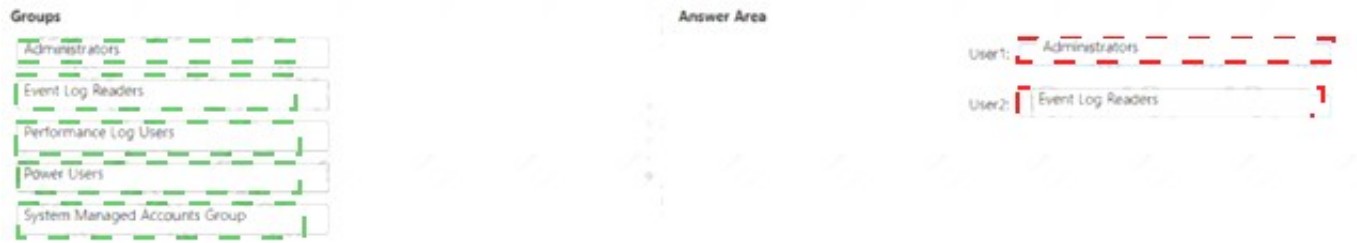
User2:

A. Mastered

B. Not Mastered

Answer: A

Explanation:



NEW QUESTION 26

- (Exam Topic 4)

You use Microsoft Intune and Intune Data Warehouse.

You need to create a device inventory report that includes the data stored in the data warehouse. What should you use to create the report?

- A. the Azure portal app
- B. Endpoint analytics
- C. the Company Portal app
- D. Microsoft Power BI

Answer: D

Explanation:

You can use the Power BI Compliance app to load interactive, dynamically generated reports for your Intune tenant. Additionally, you can load your tenant data in Power BI using the OData link. Intune provides connection settings to your tenant so that you can view the following sample reports and charts related to: Devices Enrollment

App protection policy Compliance policy
 Device configuration profiles Software updates
 Device inventory logs

Note: Load the data in Power BI using the OData link

With a client authenticated to Azure AD, the OData URL connects to the RESTful endpoint in the Data Warehouse API that exposes the data model to your reporting client. Follow these instructions to use Power BI Desktop to connect and create your own reports.

- > Sign in to the Microsoft Endpoint Manager admin center.
- > Select Reports > Intune Data warehouse > Data warehouse.
- > Retrieve the custom feed URL from the reporting blade, for example:
- > Open Power BI Desktop.
- > Choose File > Get Data. Select OData feed.
- > Choose Basic.
- > Type or paste the OData URL into the URL box.
- > Select OK.
- > If you have not authenticated to Azure AD for your tenant from the Power BI desktop client, type your credentials. To gain access to your data, you must authorize with Azure Active Directory (Azure AD) using OAuth 2.0.
- > Select Organizational account.
- > Type your username and password.
- > Select Sign In.
- > Select Connect.
- > Select Load.

Reference: <https://docs.microsoft.com/en-us/mem/intune/developer/reports-proc-get-a-link-powerbi>

NEW QUESTION 29

- (Exam Topic 4)

You have the on-premises servers shown in the following table.

Name	Description
DC1	Domain controller that runs Windows Server 2022
Server1	Standalone server that runs Windows Server 2022
Server2	Member server that runs Windows Server 2022 and has the Remote Access role installed
Server3	Member server that runs Windows Server 2019
Server4	Red Hat Enterprise Linux (RHEL) 8.4 server

You have a Microsoft 365 E5 subscription that contains Android and iOS devices. All the devices are managed by using Microsoft Intune.

You need to implement Microsoft Tunnel for Intune. The solution must minimize the number of open firewall ports.

To which server can you deploy a Tunnel Gateway server, and which inbound ports should be allowed on the server to support Microsoft Tunnel connections? To answer, select the appropriate options in the answer area.

NOTE: Each correct selection is worth one point.

Server:

Server1

Server2

Server3

Server4

Ports:

TCP 443 only

UDP 443 only

TCP 1723 only

TCP 443 and UDP 443 only

TCP 443, TCP 1723, and UDP 443

- A. Mastered
- B. Not Mastered

Answer: A

Explanation:

Box 1: Server4
Microsoft Tunnel is a VPN gateway solution for Microsoft Intune that runs in a container on Linux and allows access to on-premises resources from iOS/iPadOS and Android Enterprise devices using modern authentication and Conditional Access.
Box 2: TCP 443 and UDP 443 only
Some traffic goes to your public facing IP address for the Tunnel. The VPN channel will use TCP, TLS, UDP, and DTLS over port 443. By default, port 443 is used for both TCP and UDP, but this can be customized via the Intune Saerver Configuration – Server port setting. If changing the default port (443) ensure your inbound firewall rules are adjusted to the custom port.
Incorrect:
TCP 1723 is not used.
Reference: <https://docs.microsoft.com/en-us/mem/intune/protect/microsoft-tunnel-overview>

NEW QUESTION 31

- (Exam Topic 4)
You are creating a device configuration profile in Microsoft Intu You need to configure specific OMA-URI settings in the profile. Which profile type template should you use?

- A. Device restrictions (Windows 10 Team)
- B. Identity protection
- C. Custom
- D. Device restrictions

Answer: C

NEW QUESTION 35

- (Exam Topic 4)
You have a Microsoft Deployment Toolkit (MDT) deployment share named Share 1. You add Windows 10 images to Share! as shown in the following table.

Name	In WIM file	Description
Image1	Install1.wim	Default Windows 10 Pro image from the Windows 10 installation media
Image2	Install1.wim	Default Windows 10 Enterprise image from the Windows 10 installation media
Image3	Install2.wim	Default Windows 10 Pro for Workstations image from the Windows 10 installation media
Image4	Custom1.wim	Custom Windows 10 Enterprise image without any additional applications
Image5	Custom2.wim	Custom Windows 10 Enterprise image that includes custom applications

Which images can be used in the Standard Client Task Sequence, and which images can be used in the Standard Client Upgrade Task Sequence?
NOTE: Each correct selection is worth one point.

Answer Area

Standard Client Task Sequence:

Image3 only
Image3, Image4, and Image5 only
Image1, Image2, and Image3 only
Image1, Image2, Image3, and Image4 only
Image1, Image2, Image3, Image4, and Image5

Standard Client Upgrade Task Sequence:

Image3 only
Image3, Image4, and Image5 only
Image1, Image2, and Image3 only
Image1, Image2, Image3, and Image4 only
Image1, Image2, Image3, Image4, and Image5

- A. Mastered
- B. Not Mastered

Answer: A

Explanation:

Answer Area

Standard Client Task Sequence:

Image3 only
Image3, Image4, and Image5 only
Image1, Image2, and Image3 only
Image1, Image2, Image3, and Image4 only
Image1, Image2, Image3, Image4, and Image5

Standard Client Upgrade Task Sequence:

Image3 only
Image3, Image4, and Image5 only
Image1, Image2, and Image3 only
Image1, Image2, Image3, and Image4 only
Image1, Image2, Image3, Image4, and Image5

NEW QUESTION 36

- (Exam Topic 4)

Your network contains an on-premises Active Directory Domain Services (AD DS) domain that syncs with an Azure AD tenant.

You have a Microsoft 365 subscription

You plan to use Windows Autopilot to deploy new Windows devices. You plan to create a deployment profile.

You need to ensure that The deployment meets the following requirements:

- Devices must be joined to AD DS regardless of their current working location.
- Users in the marketing department must have a line-of-business (LOB) app installed during the deployment. The solution must minimize administrative effort.

What should you do for each requirement? To answer, select the appropriate options in the answer area. NOTE: Each correct selection is worth one point.

Answer Area

Devices must be joined to AD DS regardless of their current working location:

Install the Intune connector for Active Directory.
Deploy Always On VPN.
Install the Intune connector for Active Directory.
Modify the Autopilot deployment profile.
Edit the Co-management settings in Intune.

The marketing department users must have an LOB app installed during the deployment:

Modify the Autopilot deployment profile.
Modify the Autopilot deployment profile.
Create a Microsoft Intune app deployment.
Create a device configuration profile in Intune.

- A. Mastered

B. Not Mastered

Answer: A

Explanation:

Answer Area

Devices must be joined to AD DS regardless of their current working location:

- Install the Intune connector for Active Directory.
- Deploy Always On VPN.
- Install the Intune connector for Active Directory.**
- Modify the Autopilot deployment profile.
- Edit the Co-management settings in Intune.

The marketing department users must have an LOB app installed during the deployment:

- Modify the Autopilot deployment profile.
- Modify the Autopilot deployment profile.**
- Create a Microsoft Intune app deployment.
- Create a device configuration profile in Intune.

NEW QUESTION 38

- (Exam Topic 4)

You have a Hyper-V host. The host contains virtual machines that run Windows 10 as shown in following table.

Name	Generation	Virtual TPM	Virtual processors	Memory
VM1	1	No	4	16 GB
VM2	2	Yes	2	4 GB
VM3	2	Yes	1	8 GB

Which virtual machines can be upgraded to Windows 11?

- A. VM1 only
- B. VM2 only
- C. VM2 and VM3 only
- D. VM1.VM2. andVM3

Answer: C

Explanation:

Windows 11 has certain hardware requirements that must be met in order to upgrade from Windows 10. Some of these requirements are as follows:

- > A processor with at least 1 GHz clock speed and2 cores.
- > A system firmware that supports UEFI andSecure Boot.
- > A Trusted Platform Module (TPM) version2.0 or higher.
- > At least 4 GB
- > At least 64 GB of system memory (RAM). of storage space.

In this scenario, the virtual machines that run Windows 10 have the following specifications:

- > VM3 is a generation 2 virtual machine with a virtual TPM, 1 virtual processor, and 8 GB of memory.
- VM1 cannot be upgraded to Windows 11 because it does not have a virtual TPM and it is not a generation 2 virtual machine. Generation 1 virtual machines do not support UEFI and Secure Boot, which are required for Windows 11. VM2 and VM3 can be upgraded to Windows 11 because they have a virtual TPM and they are generation 2 virtual machines. They also meet the minimum requirements for processor speed, cores, memory, and storage space.

NEW QUESTION 43

- (Exam Topic 4)

Your company has an Azure AD tenant named contoso.com that contains several Windows 10 devices. When you join new Windows 10 devices to contoso.com, users are prompted to set up a four-digit pin. You need to ensure that the users are prompted to set up a six-digit pin when they join the Windows 10 devices to contoso.com.

Solution: From the Microsoft Entra admin center, you modify the User settings and the Device settings. Does this meet the goal?

- A. Yes
- B. No

Answer: B

NEW QUESTION 47

- (Exam Topic 4)

You have a Microsoft 365 tenant that uses Microsoft Intune and contains the devices shown in the following table.

Name	Platform
Device1	Windows 10
Device2	macOS

In Microsoft Intune Endpoint security, you need to configure a disk encryption policy for each device. Which encryption type should you use for each device, and which role-based access control (RBAC) role in Intune should you use to manage the encryption keys? To answer, select the appropriate options in the answer area.
NOTE: Each correct selection is worth one point.

Answer Area

Device1:

FileVault
Cryptsetup
Encrypting File System (EFS)
BitLocker Drive Encryption (BitLocker)

Device2:

FileVault
Cryptsetup
Encrypting File System (EFS)
BitLocker Drive Encryption (BitLocker)

RBAC role:

Help Desk Operator
Application Manager
Intune Role Administrator
Policy and Profile Manager

- A. Mastered
- B. Not Mastered

Answer: A

Explanation:
Graphical user interface, text, application Description automatically generated

NEW QUESTION 50
- (Exam Topic 4)
You have a Microsoft 365 subscription that uses Microsoft Intune.
You need to ensure that you can deploy apps to Android Enterprise devices. What should you do first?

- A. Create a configuration profile.
- B. Add a certificate connector.
- C. Configure the Partner device management settings.
- D. Link your managed Google Play account to Intune.

Answer: D

NEW QUESTION 53
- (Exam Topic 4)
You have a Microsoft 365 subscription that contains the devices shown in the following table.

Name	Type
Device1	Windows 10
Device2	iOS
Device3	Android Enterprise

You need to ensure that only devices running trusted firmware or operating system builds can access network resources.
Which compliance policy setting should you configure for each device? To answer, drag the appropriate settings to the correct devices. Each setting may be used once, more than once, or not at all. You may need to drag the split bar between panes or scroll to view content.
NOTE: Each correct selection is worth one point.

Settings

Require BitLocker.

Prevent jailbroken devices from having corporate access.

Prevent rooted devices from having corporate access.

Require Secure Boot to be enabled on the device.

Answer Area

Device1:Setting

Device2:Setting

Device3:Setting

- A. Mastered
- B. Not Mastered

Answer: A

Explanation:

Box 1:

Device Compliance settings for Windows 10/11 in Intune

There are the different compliance settings you can configure on Windows devices in Intune. As part of your mobile device management (MDM) solution, use these settings to require BitLocker, set a minimum and maximum operating system, set a risk level using Microsoft Defender for Endpoint, and more.

Note: Windows Health Attestation Service evaluation rules Require BitLocker:

Windows BitLocker Drive Encryption encrypts all data stored on the Windows operating system volume. BitLocker uses the Trusted Platform Module (TPM) to help protect the Windows operating system and user

data. It also helps confirm that a computer isn't tampered with, even if its left unattended, lost, or stolen. If the computer is equipped with a compatible TPM, BitLocker uses the TPM to lock the encryption keys that protect the data. As a result, the keys can't be accessed until the TPM verifies the state of the computer.

Not configured (default) - This setting isn't evaluated for compliance or non-compliance.

Require - The device can protect data that's stored on the drive from unauthorized access when the system is off, or hibernates.

Box 2: Prevent jailbroken devices from having corporate access Device Compliance settings for iOS/iPadOS in Intune

There are different compliance settings you can configure on iOS/iPadOS devices in Intune. As part of your mobile device management (MDM) solution, use these settings to require an email, mark rooted (jailbroken) devices as not compliant, set an allowed threat level, set passwords to expire, and more.

Device Health Jailbroken devices

Supported for iOS 8.0 and later

Not configured (default) - This setting isn't evaluated for compliance or non-compliance. Block - Mark rooted (jailbroken) devices as not compliant.

Box 3: Prevent rooted devices from having corporate access. Device compliance settings for Android Enterprise in Intune

There are different compliance settings you can configure on Android Enterprise devices in Intune. As part of your mobile device management (MDM) solution, use these settings to mark rooted devices as not compliant, set an allowed threat level, enable Google Play Protect, and more.

Device Health - for Personally-Owned Work Profile Rooted devices

Not configured (default) - This setting isn't evaluated for compliance or non-compliance. Block - Mark rooted devices as not compliant.

Reference: <https://docs.microsoft.com/en-us/mem/intune/protect/compliance-policy-create-windows> <https://docs.microsoft.com/en-us/mem/intune/protect/compliance-policy-create-android-for-work> <https://docs.microsoft.com/en-us/mem/intune/protect/compliance-policy-create-ios>

NEW QUESTION 57

- (Exam Topic 4)

You have the Microsoft Deployment Toolkit (MDT) installed in three sites as shown in the following table.

MDT instance name	Site	Default gateway
MDT1	New York	10.1.1.0/24
MDT2	London	10.5.5.0/24
MDT3	Dallas	10.4.4.0/24

You use Distributed File System (DFS) Replication to replicate images in a share named Production. You configure the following settings in the Bootstrap.ini file.

[Settings]
 Priority=DefaultGateway, Default
 [DefaultGateway]
 10.1.1.1=NewYork
 10.5.5.1=London
 [NewYork]
 DeployRoot=\\MDT1\Production\$\br/>
 [London]
 DeployRoot=\\MDT2\Production\$

KeyboardLocale=en-gb -
 [Default]
 DeployRoot=\\MDT3\Production\$

KeyboardLocale=en-us -
 You plan to deploy Windows 10 to the computers shown in the following table.

Name	IP address
LT1	10.1.1.240
DT1	10.5.5.115
TB1	10.2.2.193

For each of the following statements, select Yes if the statement is true. Otherwise, select No.
 NOTE: Each correct selection is worth one point.

Statements	Yes	No
TB1 will download the image from MDT3.	<input type="radio"/>	<input type="radio"/>
DT1 will have a KeyboardLocale of en-gb.	<input type="radio"/>	<input type="radio"/>
LT1 will download the image from MDT1.	<input type="radio"/>	<input type="radio"/>

- A. Mastered
- B. Not Mastered

Answer: A

Explanation:

Statements	Yes	No
TB1 will download the image from MDT3.	<input type="radio"/>	<input checked="" type="radio"/>
DT1 will have a KeyboardLocale of en-gb.	<input checked="" type="radio"/>	<input type="radio"/>
LT1 will download the image from MDT1.	<input checked="" type="radio"/>	<input type="radio"/>

NEW QUESTION 58
 - (Exam Topic 3)
 What is the maximum number of devices that User1 and User2 can enroll in Intune? To answer, select the appropriate options in the answer area.
 NOTE: Each correct selection is worth one point.

User1 can enroll a maximum of:

	<input checked="" type="checkbox"/>
5 devices	
10 devices	
15 devices	
1,000 devices	
An unlimited number of devices	

User2 can enroll a maximum of:

	<input checked="" type="checkbox"/>
5 devices	
10 devices	
15 devices	
1,000 devices	
An unlimited number of devices	

- A. Mastered
- B. Not Mastered

Answer: A

Explanation:

User1 can enroll a maximum of:

	<input checked="" type="checkbox"/>
5 devices	
10 devices	
15 devices	
1,000 devices	
An unlimited number of devices	

User2 can enroll a maximum of:

	<input checked="" type="checkbox"/>
5 devices	
10 devices	
15 devices	
1,000 devices	
An unlimited number of devices	

NEW QUESTION 60

- (Exam Topic 3)
You are evaluating which devices are compliant.
For each of the following statements, select Yes if the statement is true. Otherwise, select No.
NOTE: Each correct selection is worth one point.

Statements	Yes	No
Device1 is compliant	<input type="radio"/>	<input type="radio"/>
Device3 is compliant	<input type="radio"/>	<input type="radio"/>
Device4 is compliant	<input type="radio"/>	<input type="radio"/>

- A. Mastered
- B. Not Mastered

Answer: A

Explanation:

Statements	Yes	No
Device1 is compliant	<input type="radio"/>	<input checked="" type="radio"/>
Device3 is compliant	<input checked="" type="radio"/>	<input type="radio"/>
Device4 is compliant	<input checked="" type="radio"/>	<input type="radio"/>

NEW QUESTION 64

- (Exam Topic 3)

You need to meet the technical requirements for the new HR department computers.

How should you configure the provisioning package? To answer, select the appropriate options in the answer area.

NOTE: Each correct selection is worth one point.

Specify ComputerName as:

<input checked="" type="checkbox"/>
"HR" + RAND(4)
"HumanResources-" + RAND(????)
HR-%RAND:4%
HR-????
HumanResources-%RAND:4%

Specify AccountOU as:

<input checked="" type="checkbox"/>
CN=Computers, CN=HR, DC=Contoso, DC=com
Computers/HumanResources/Contoso.com
Contoso.com/HR/Computers
OU=Computers, OU=HR, DC=Contoso, DC=com

- A. Mastered
- B. Not Mastered

Answer: A

Explanation:

Reference:

<https://docs.microsoft.com/en-us/windows/configuration/wcd/wcd-accounts>

NEW QUESTION 67

- (Exam Topic 2)

You need to capture the required information for the sales department computers to meet the technical requirements.

Which Windows PowerShell command should you run first?

- A. Install-Module WindowsAutoPilotIntune
- B. Install-Script Get-WindowsAutoPilotInfo
- C. Import-AutoPilotCSV
- D. Get-WindowsAutoPilotInfo

Answer: B

Explanation:

References:

<https://docs.microsoft.com/en-us/windows/deployment/windows-autopilot/existing-devices>

"This topic describes how to convert Windows 7 or Windows 8.1 domain-joined computers to Windows 10 devices joined to either Azure Active Directory or Active Directory (Hybrid Azure AD Join) by using Windows Autopilot"

NEW QUESTION 69

- (Exam Topic 2)

What should you use to meet the technical requirements for Azure DevOps?

- A. An app protection policy
- B. Windows Information Protection (WIP)
- C. Conditional access
- D. A device configuration profile

Answer: C

Explanation:

References:

<https://docs.microsoft.com/en-us/azure/devops/organizations/accounts/manage-conditional-access?view=azure-devops>

NEW QUESTION 73

- (Exam Topic 2)

You need to resolve the performance issues in the Los Angeles office.

How should you configure the update settings? To answer, select the appropriate options in the answer area. NOTE: Each correct selection is worth one point.

Answer Area

**Change Delivery Optimization
download mode to:**

<input type="checkbox"/>
Bypass mode
HTTP blended with internet peering
HTTP blended with peering behind same NAT
Simple download mode with no peering

Update Active Hours Start to:

<input type="checkbox"/>
10 AM
11 AM
10 PM
11 PM

Update Active Hours End to:

<input type="checkbox"/>
10 AM
11 AM
10 PM
11 PM

- A. Mastered
- B. Not Mastered

Answer: A

Explanation:

A screenshot of a computer Description automatically generated with low confidence

Reference:

<https://docs.microsoft.com/en-us/windows/deployment/update/waas-delivery-optimization> <https://2pintsoftware.com/delivery-optimization-dl-mode/>

NEW QUESTION 77

- (Exam Topic 2)

You need to meet the device management requirements for the developers. What should you implement?

- A. folder redirection
- B. Enterprise State Roaming
- C. home folders
- D. known folder redirection in Microsoft OneDrive

Answer: B

Explanation:

Litware identifies the following device management requirements:

➤ Ensure that Microsoft Edge Favorites are accessible from all computers to which the developers sign in. Enterprise State Roaming allows for the synchronization of Microsoft Edge browser setting, including favorites and reading list, across devices.

Reference:

<https://docs.microsoft.com/en-us/azure/active-directory/devices/enterprise-state-roaming-windows-settings-refer>

NEW QUESTION 80

- (Exam Topic 1)

Which user can enroll Device6 in Intune?

- A. User4 and User2 only
- B. User4 and User 1 only
- C. User1, User2, User3, and User4
- D. User4. User Land User2 only

Answer: B

NEW QUESTION 85

- (Exam Topic 1)
User1 and User2 plan to use Sync your settings.
On which devices can the users use Sync your settings? To answer, select the appropriate options in the answer area.
NOTE: Each correct selection is worth one point.

Answer Area

User1:

No devices
Device4 and Device5 only
Device1, Device2 and Device3 only
Device1, Device2, Device3, Device4, and Device5

User2:

No devices
Device4 and Device5 only
Device1, Device2 and Device3 only
Device1, Device2, Device3, Device4, and Device5

- A. Mastered
- B. Not Mastered

Answer: A

Explanation:
Graphical user interface, text, application, email Description automatically generated
Reference:
<https://www.jeffgilb.com/managing-local-administrators-with-azure-ad-and-intune/>

NEW QUESTION 89

- (Exam Topic 1)
For each of the following statements, select Yes if the statement is true. Otherwise, select No.
NOTE: Each correct selection is worth one point.

Statements	Yes	No
User1 can create a file named D:\Folder1\file1.txt on Device4 by using Notepad.	<input type="radio"/>	<input type="radio"/>
User2 can remove D:\Folder1 from the list of protected folders on Device2.	<input type="radio"/>	<input type="radio"/>
User3 can create a file named C:\Users\User3\Desktop\file1.txt on Device2 by running a custom Windows PowerShell script.	<input type="radio"/>	<input type="radio"/>

- A. Mastered
- B. Not Mastered

Answer: A

Explanation:
A screenshot of a computer Description automatically generated with medium confidence

NEW QUESTION 90

- (Exam Topic 1)
You implement Boundary1 based on the planned changes.
Which devices have a network boundary of 192.168.1.0/24 applied?

- A. Device2 only
- B. Device3 only
- C. Device 1. Device2. and Device5 only
- D. Device 1, Device2, Device3, and Device4 only

Answer: D

Explanation:
Reference:
<https://docs.microsoft.com/en-us/mem/intune/configuration/network-boundary-windows>

NEW QUESTION 93

- (Exam Topic 4)
Your company has an Azure AD tenant named contoso.com that contains several Windows 10 devices. When you join new Windows 10 devices to contoso.com, users are prompted to set up a four-digit pin. You need to ensure that the users are prompted to set up a six-digit pin when they join the Windows 10

devices to contoso.com.

Solution: From the Microsoft Entra admin center, you configure automatic mobile device management (MDM) enrollment. From the Microsoft Intune admin center, you create and assign a device restrictions profile.

Does this meet the goal?

- A. Yes
- B. No

Answer: B

NEW QUESTION 94

- (Exam Topic 4)

You have computer that run Windows 10 and connect to an Azure Log Analytics workspace. The workspace is configured to collect all available events from Windows event logs. The computers have the logged events shown in the following table.

Event ID	Log	Type	Computer
1	Application	Success	Computer1
2	System	Information	Computer1
3	Security	Audit Success	Computer2
4	System	Error	Computer2

Which events are collected in the Log Analytics workspace?

- A. 1 only
- B. 2 and 3 only
- C. 1 and 3 only
- D. 1, 2, and 4 on
- E. 1, 2, 3, and 4

Answer: E

Explanation:

All events from Windows event logs are collected in the Log Analytics workspace, regardless of the event level or source. Therefore, events 1, 2, 3, and 4 are all collected in the workspace. References: <https://docs.microsoft.com/en-us/azure/azure-monitor/agents/data-sources-windows-events>

NEW QUESTION 97

- (Exam Topic 4)

You have a Microsoft 365 subscription that uses Microsoft Intune Suite. You use Microsoft Intune to manage devices.

You have a Windows 11 device named Device1 that is enrolled in Intune. Device1 has been offline for 30 days.

You need to remove Device1 from Intune immediately. The solution must ensure that if the device checks in again, any apps and data provisioned by Intune are removed. User-installed apps, personal data, and OEM-installed apps must be retained.

What should you use?

- A. a Delete action
- B. a Retire action
- C. a Fresh Start action
- D. an Autopilot Reset action

Answer: B

Explanation:

A retire action removes a device from Intune management and removes any apps and data provisioned by Intune. User-installed apps, personal data, and OEM-installed apps are retained. A retire action can be performed on devices that are offline for more than 30 days. References: <https://docs.microsoft.com/en-us/mem/intune/remote-actions/devices-wipe>

NEW QUESTION 98

- (Exam Topic 4)

You have a Microsoft 365 tenant that uses Microsoft Intune.

You use the Company Portal app to access and install published apps to enrolled devices. From the Microsoft Intune admin center, you add a Microsoft Store app.

Which two App information types are visible in the Company Portal? NOTE: Each correct selection is worth one point.

- A. Privacy URL
- B. Information URL
- C. Developer
- D. Owner

Answer: AC

NEW QUESTION 101

- (Exam Topic 4)

You have two computers that run Windows 10. The computers are enrolled in Microsoft Intune as shown in the following table.

Name	Member of
Computer1	Group1
Computer2	Group1, Group2

Windows 10 update rings are defined in Intune as shown in the following table.

Name	Quality deferral (days)	Assigned
Ring1	3	Yes
Ring2	10	Yes

You assign the update rings as shown in the following table.

Name	Include	Exclude
Ring1	Group1	Group2
Ring2	Group2	Group1

What is the effect of the configurations on Computer1 and Computer2? To answer, select the appropriate options in the answer area.
NOTE: Each correct selection is worth one point.

Quality deferral on Computer1:

▼

3 days

7 days

10 days

13 days

No effect

Quality deferral on Computer2:

▼

3 days

7 days

10 days

13 days

No effect

- A. Mastered
- B. Not Mastered

Answer: A

Explanation:

A screenshot of a computer Description automatically generated
Computer1 and Computer2 are members of Group1. Ring1 is applied to Group1.
Note: The term "Exclude" is misleading. It means that the ring is not applied to that group, rather than that group being blocked.
References:
<https://docs.microsoft.com/en-us/windows/deployment/update/waas-wufb-intune> <https://allthingscloud.blog/configure-windows-update-business-using-microsoft-intune/>

NEW QUESTION 102

- (Exam Topic 4)

You have a Microsoft 365 subscription that uses Microsoft Intune and contains the users shown in the following table.

Name	Member of	License
User1	Group1	None
User2	Group1	Microsoft 365 E3
User3	Group2	Microsoft 365 E5

Group2 has been assigned in the Enrollment Status Page. You have the devices shown in the following table.

Name	Operating system	Department
Device1	Windows 10 Pro	Marketing
Device2	Windows 11 Home	Research
Device3	Windows 10 Pro	Marketing

You capture and upload the hardware IDs of the devices in the marketing department. You configure Windows Autopilot.
For each of the following statements, select Yes if the statement is true. Otherwise select No. NOTE: Each correct selection is worth one point.

Answer Area

Statements	Yes	No
User1 can complete the Autopilot process on Device1.	<input type="checkbox"/>	<input type="checkbox"/>
User2 can complete the Autopilot process on Device1.	<input type="checkbox"/>	<input type="checkbox"/>
User3 can view device setup information during the enrollment phase of Device1.	<input type="checkbox"/>	<input type="checkbox"/>

- A. Mastered
- B. Not Mastered

Answer: A

Explanation:

Answer Area

Statements	Yes	No
User1 can complete the Autopilot process on Device1.	<input type="checkbox"/>	<input checked="" type="checkbox"/>
User2 can complete the Autopilot process on Device1.	<input checked="" type="checkbox"/>	<input type="checkbox"/>
User3 can view device setup information during the enrollment phase of Device1.	<input type="checkbox"/>	<input checked="" type="checkbox"/>

NEW QUESTION 105

- (Exam Topic 4)

Note: This question is part of a series of questions that present the same scenario. Each question in the series contains a unique solution that might meet the stated goals. Some question sets might have more than one correct solution, while others might not have a correct solution.

After you answer a question in this section, you will NOT be able to return to it. As a result, these questions will not appear in the review screen.

Your company has an Azure AD tenant named contoso.com that contains several Windows 10 devices. When you join new Windows 10 devices to contoso.com, users are prompted to set up a four-digit pin. You need to ensure that the users are prompted to set up a six-digit pin when they join the Windows 10 devices to contoso.com.

Solution: From the Microsoft Entra admin center, you configure the Authentication methods. Does this meet the goal?

- A. Yes
- B. No

Answer: B

NEW QUESTION 108

- (Exam Topic 4)

You have a Microsoft 365 subscription that uses Microsoft Intune Suite. You use Microsoft Intune to deploy and manage Windows devices.

You have 100 devices from users that left your company.

You need to repurpose the devices for new users by removing all the data and applications installed by the previous users. The solution must minimize administrative effort.

What should you do?

- A. Deploy a new configuration profile to the devices.
- B. Perform a Windows Autopilot reset on the devices.
- C. Perform an in-place upgrade on the devices.
- D. Perform a clean installation of Windows 11 on the devices.

Answer: B

NEW QUESTION 112

- (Exam Topic 4)

You have a Microsoft 365 subscription that uses Microsoft Intune Suite. You use Microsoft Intune to manage devices.

You need to review the startup times and restart frequencies of the devices. What should you use?

- A. Azure Monitor
- B. intune Data Warehouse
- C. Microsoft Defender for Endpoint

D. Endpoint analytics

Answer: D

Explanation:

Endpoint analytics is a feature of Microsoft Intune that provides insights into the performance and health of devices. You can use endpoint analytics to review the startup times and restart frequencies of the devices, as well as other metrics such as sign-in times, battery life, app reliability, and software inventory. References: <https://docs.microsoft.com/en-us/mem/analytics/overview>

NEW QUESTION 117

- (Exam Topic 4)

In Microsoft Intune, you have the device compliance policies shown in the following table.

Name	Type	Encryption	Windows Defender antimalware	Mark device as not compliant	Assigned to
Policy1	Windows 8.1 and later	Require	<i>Not applicable</i>	5 days	Group1
Policy2	Windows 10 and later	Not configured	Require	7 days	Group2
Policy3	Windows 10 and later	Require	Require	10 days	Group2

The Intune compliance policy settings are configured as shown in the following exhibit.

 Save
  Discard

These settings configure the way the compliance service treats devices. Each device evaluates these as a "Built-in Device Compliance Policy", which is reflected in device monitoring.

Mark devices with no compliance policy assigned as ⓘ

Compliant

Not Compliant

Enhanced jailbreak detection ⓘ

Enabled

Disabled

Compliance status validity period (days) ⓘ

30
 

On June 1, you enroll Windows 10 devices in Intune as shown in the following table.

Name	Use BitLocker Drive Encryption (BitLocker)	Windows Defender	Member of
Device1	No	Enabled	Group1
Device2	No	Enabled	Group2

For each of the following statements, select Yes if the statement is true. Otherwise, select No. NOTE: Each correct selection is worth one point.

Answer Area

Statements	Yes	No
On June 4, Device1 is marked as compliant. <input type="radio"/>	<input type="radio"/>	<input type="radio"/>
On June 6, Device1 is marked as compliant. <input type="radio"/>	<input type="radio"/>	<input type="radio"/>
On June 9, Device2 is marked as compliant. <input type="radio"/>	<input type="radio"/>	<input type="radio"/>

- A. Mastered
- B. Not Mastered

Answer: A

Explanation:

Device 1 is Windows 10 - and policy 1 is for Windows 8. Default compliance for devices without a policy is not compliant so first 2 questions are NO. Then the third device has 2 policies, the first one is compliant and the second policy is not compliant but the device is not marked as non-compliant due to the fact that mark device as non-compliant is set to 10 days. This means that the machine will be compliant until june 10th.
 Source:
 Mark device non-compliant: By default, this action is set for each compliance policy and has a schedule of zero (0) days, marking devices as noncompliant immediately.
 When you change the default schedule, you provide a grace period in which a user can remediate issues or become compliant without being marked as non-compliant.
 This action is supported on all platforms supported by Intune. <https://docs.microsoft.com/en-us/mem/intune/protect/actions-for-noncompliance>

NEW QUESTION 120

- (Exam Topic 4)

You have a Microsoft 365 E5 subscription that contains a user named User1 and uses Microsoft Intune Suite. You use Microsoft Intune to manage devices. You have a device named Device1 that is enrolled in Intune. You need to ensure that User1 can use Remote Help from the Intune admin center for Device1. Which three actions should you perform? Each correct answer presents part of the solution.
NOTE: Each correct selection is worth one point.

- A. Deploy the Remote Help app to Device1.
- B. Assign the Help Desk Operator role to User1.
- C. Assign the Intune Administrator role to User1.
- D. Assign a Microsoft 365 E5 license to User1.
- E. Rerun device onboarding on Device1.
- F. Assign the Remote Help add-on license to User1.

Answer: ABF

NEW QUESTION 124

- (Exam Topic 4)

You have an Azure AD tenant named contoso.com. You have a workgroup computer named Computer1 that runs Windows 11. You need to add Computer1 to contoso.com. What should you use?

- A. dsreecmd.exe
- B. Computer Management
- C. netdom.exe
- D. the Settings app

Answer: A

NEW QUESTION 126

- (Exam Topic 4)

You have a Microsoft 365 subscription that uses Microsoft Intune Suite. You use Microsoft Intune to manage devices. Auto-enrollment in Intune is configured. You have 100 Windows 11 devices in a workgroup. You need to connect the devices to the corporate wireless network and enroll 100 new Windows devices in Intune. What should you use?

- A. a provisioning package
- B. a Group Policy Object (GPO)
- C. mobile device management (MDM) automatic enrollment
- D. a device configuration policy

Answer: C

NEW QUESTION 127

- (Exam Topic 4)

You have a Microsoft 365 subscription that contains 1,000 Android devices enrolled in Microsoft Intune. You create an app configuration policy that contains the following settings:

- Device enrollment type: Managed devices
- Profile Type: All Profile Types
- Platform: Android Enterprise

Which two types of apps can be associated with the policy? Each correct answer presents a complete solution. NOTE: Each correct selection is worth one point.

- A. Built-in Android app
- B. Managed Google Play store app
- C. Web link
- D. Android Enterprise system app
- E. Android store app

Answer: BD

NEW QUESTION 129

- (Exam Topic 4)

You have a Microsoft 365 tenant that contains the objects shown in the following table. You are creating a compliance policy named Compliance1. Which objects can you specify in Compliance1 as additional recipients of noncompliance notifications?

- A. Group3 and Group4 only
- B. Group3, Group4, and Admin1 only
- C. Group1, Group2, and Group3 only
- D. Group1, Group2, Group3, and Group4 only
- E. Group1, Group2, Group3, Group4, and Admin1

Answer: C

Explanation:

Reference:

<https://www.ravenswoodtechnology.com/microsoft-intune-compliance-notifications/> <https://docs.microsoft.com/en-us/microsoft-365/admin/create-groups/compare-groups?view=o365-worldwide>

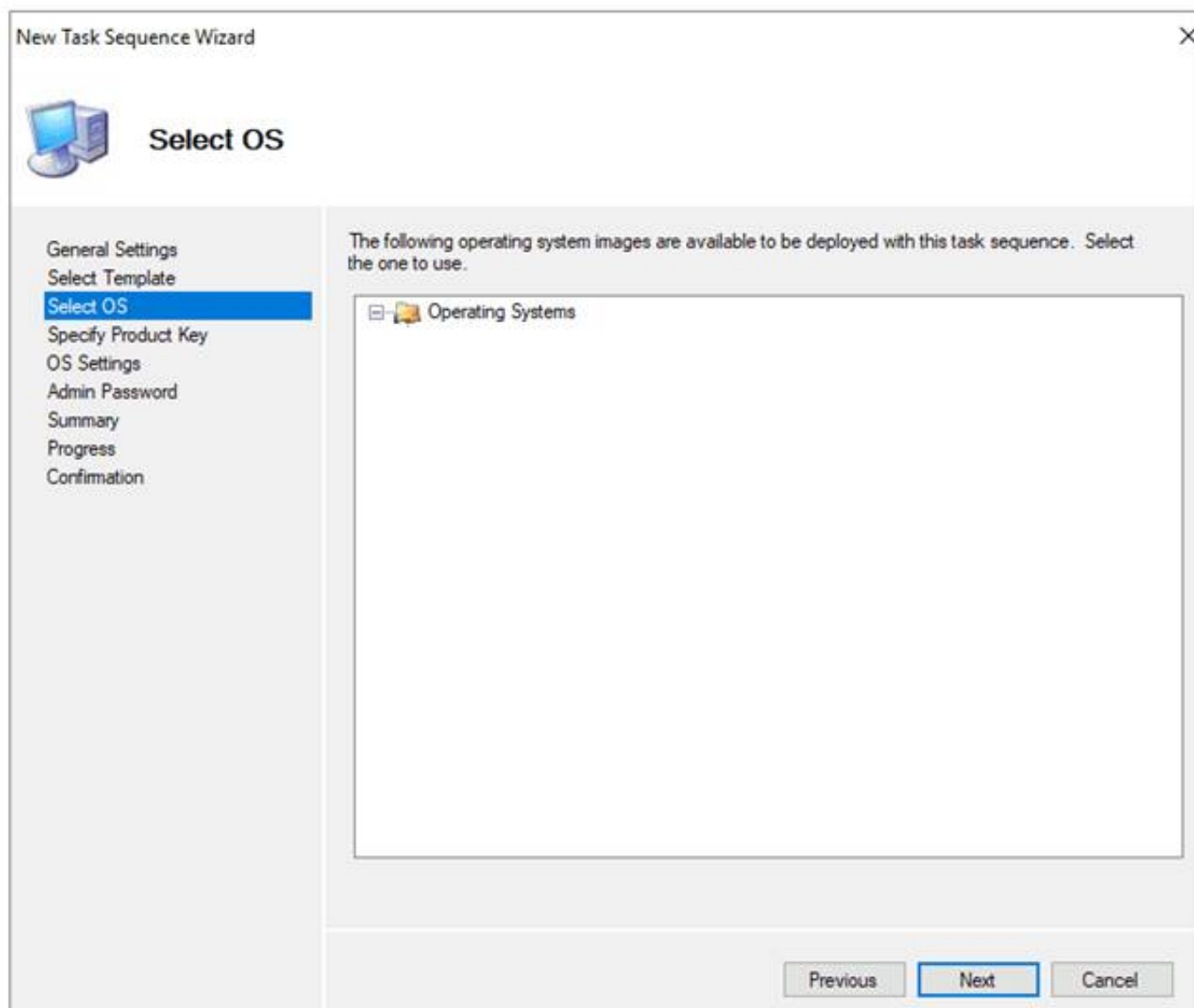
NEW QUESTION 133

- (Exam Topic 4)

You have a Microsoft Deployment Toolkit (MDT) deployment share.

From the Deployment Workbench, you open the New Task Sequence Wizard and select the Standard Client Upgrade Task Sequence task sequence template.

You discover that there are no operating system images listed on the Select OS page as shown in the following exhibit.



You need to be able to select an operating system image to perform a Windows 11 in-place upgrade. What should you do?

- A. Enable monitoring for the deployment share.
- B. Import a full set of source files.
- C. Import a custom image file.
- D. Run the Update Deployment Share Wizard

Answer: D

NEW QUESTION 138

- (Exam Topic 4)

You have an Azure Active Directory Premium Plan 2 subscription that contains the users shown in the following table.

Name	Member of	Assigned license
User1	Group1	Enterprise Mobility + Security E5
User2	Group2	Enterprise Mobility + Security E5

You purchase the devices shown in the following table.

Name	Type
Device1	Windows 10
Device2	Android

You configure automatic mobile device management (MDM) and mobile application management (MAM) enrollment by using the following settings:

- > MDM user scope: Group1
- > MAM user scope: Group2

For each of the following statements, select Yes if the statement is true. Otherwise, select No.

NOTE: Each correct selection is worth one point.

Answer Area

Statements	Yes	No
If User1 registers Device1 in contoso.com, Device1 is enrolled automatically in Microsoft Intune.	<input type="radio"/>	<input type="radio"/>
If User1 joins Device1 to contoso.com, Device2 is enrolled automatically in Microsoft Intune.	<input type="radio"/>	<input type="radio"/>
If User2 registers Device3 in contoso.com, Device3 is enrolled automatically in Microsoft Intune.	<input type="radio"/>	<input type="radio"/>

- A. Mastered
- B. Not Mastered

Answer: A

Explanation:

Reference: <https://docs.microsoft.com/en-us/mem/intune/enrollment/android-enroll> <https://powerautomate.microsoft.com/fr-fr/blog/mam-flow-mobile/>

NEW QUESTION 142

- (Exam Topic 4)

You use the Microsoft Deployment Toolkit (MDT) to manage Windows 11 deployments. From Deployment Workbench, you modify the WinPE settings and add PowerShell support. You need to generate a new set of WinPE boot image files that contain the updated settings. What should you do?

- A. From the Deployment Shares node, update the deployment share.
- B. From the Advanced Configuration node, create new media.
- C. From the Packages node, import a new operating system package
- D. From the Operating Systems node, import a new operating system.

Answer: A

NEW QUESTION 145

- (Exam Topic 4)

Your company has a computer named Computer1 that runs Windows 10. Computer1 was used by a user who left the company. You plan to repurpose Computer1 and assign the computer to a new user. You need to redeploy Computer1 by using Windows Autopilot. Which three actions should you perform in sequence? To answer, move the appropriate actions from the list of actions to the answer area and arrange them in the correct order.

Actions

Upload the file by using Microsoft Intune.

Generate a CSV file that contains the computer information.

Reset the computer.

Generate a JSON file that contains the computer information.

Upload the file by running azcopy.exe.

>

<

Answer Area

↑

↓

- A. Mastered
- B. Not Mastered

Answer: A

Explanation:

To redeploy Computer1 by using Windows Autopilot, you need to perform the following three actions in sequence:

- > Generate a JSON file that contains the computer information. This file specifies the Autopilot profile to be applied during the deployment. You can use the Get-AutopilotProfilesForExistingDevices PowerShell script to generate this file1.
- > Reset the computer. You can use the Windows Automatic Redeployment feature to trigger a reset from the login screen by pressing Ctrl + R and providing an administrator account2. Alternatively, you can use the Windows Autopilot Reset feature to remotely reset the device from Intune1.
- > Upload the file by running azcopy.exe. This step copies the JSON file to a blob storage account in Azure, where it can be accessed by the device during the deployment. You need to specify the storage account name, access key, and container name as parameters for azcopy.exe1.

NEW QUESTION 147

- (Exam Topic 4)

You have an Azure Active Directory (Azure AD) tenant that contains the users shown in the following table.

Name	Member of
User1	Group1
User2	Group2

You have devices enrolled in Microsoft Intune as shown in the following table.

Name	Platform	Member of
Device1	Windows 10	Group1
Device2	Android	Group1
Device3	iOS	Group2

From Intune, you create and send a custom notification named Notification1 to Group1. For each of the following statements, select Yes if the statement is true. Otherwise, select No. NOTE: Each correct selection is worth one point.

Statements	Yes	No
User1 receives Notification1 on Device1.	<input type="radio"/>	<input type="radio"/>
User2 receives Notification1 on Device2.	<input type="radio"/>	<input type="radio"/>
User1 receives Notification1 on Device3.	<input type="radio"/>	<input type="radio"/>

- A. Mastered
- B. Not Mastered

Answer: A

Explanation:
A screenshot of a computer Description automatically generated with medium confidence
Reference:
<https://docs.microsoft.com/en-us/mem/intune/remote-actions/custom-notifications>

NEW QUESTION 152

- (Exam Topic 4)
You have a Microsoft 365 subscription that includes Microsoft Intune.
You have an update ring named UpdateRing1 that contains the following settings:

- Automatic update behavior: Auto install and restart at a scheduled time
- Automatic behavior frequency: First week of the month
- Scheduled install day: Tuesday
- Scheduled install time: 3 AM

From the Microsoft Intune admin center, you select Uninstall for the feature updates of UpdateRing1. When will devices start to remove the feature updates?

A. when a user approves the uninstall
B. as soon as the policy is received
C. next Tuesday
D. the first Tuesday of the next month

Answer: C

NEW QUESTION 153


- (Exam Topic 4)
You have a Microsoft 365 E5 subscription that contains 100 Windows 10 devices enrolled in Microsoft Intune. You need to create Endpoint security policies to meet the following requirements:


- > Hide the Firewall & network protection area in the Windows Security app.
- > Disable the provisioning of Windows Hello for Business on the devices.


Which two policy types should you use? To answer, select the policies in the answer area.
NOTE: Each correct selection is worth one point.


Answer Area


Manage


 Antivirus


 Disk encryption


 Firewall

 Endpoint detection and response

 Attack surface reduction

 Account protection

 Device compliance

 Conditional access

- A. Mastered

B. Not Mastered

Answer: A

Explanation:

Graphical user interface, application Description automatically generated
In the Antivirus policy settings, you can hide the Firewall and network protection area in the Windows Security app.
Windows Hello for Business settings are configured in Identity protection. Reference:
<https://docs.microsoft.com/en-us/mem/intune/protect/antivirus-security-experience-windows-settings> <https://docs.microsoft.com/en-us/mem/intune/protect/identity-protection-windows-settings>

NEW QUESTION 158

- (Exam Topic 4)
Your network contains an on-premises Active Directory domain and an Azure AD tenant.
The Default Domain Policy Group Policy Object (GPO) contains the settings shown in the following table.

Name	GPO value
LockoutBadCount	0
MaximumPasswordAge	42
MinimumPasswordAge	1
MinimumPasswordLength	7
PasswordComplexity	True
PasswordHistorySize	24

Which device configuration profile type template should you use?

- A. Administrative Templates
- B. Endpoint protection
- C. Device restrictions
- D. Custom

Answer: A

Explanation:

To configure the settings shown in the table, you need to use the Administrative Templates device configuration profile type template. This template allows you to configure hundreds of settings that are also available in Group Policy. You can use this template to configure settings such as password policies, account lockout policies, and audit policies. References:
<https://docs.microsoft.com/en-us/mem/intune/configuration/administrative-templates-windows>

NEW QUESTION 162

- (Exam Topic 4)
You have 100 computers that run Windows 10.
You plan to deploy Windows 11 to the computers by performing a wipe and load installation. You need to recommend a method to retain the user settings and the user data.
Which three actions should you recommend be performed in sequence? To answer, move the appropriate actions from the list of actions to the answer area and arrange them in the correct order.

Actions

Configure known folder redirection in Microsoft OneDrive.

Run scanstate.exe.

Run loadstate.exe.

Enable Enterprise State Roaming.

Create a system image backup.

Deploy Windows 11.

Restore a system image backup.

>

<

Answer Area

↑

↓

- A. Mastered
- B. Not Mastered

Answer: A

Explanation:

Actions

Configure known folder redirection in Microsoft OneDrive.

Run scanstate.exe.

Run loadstate.exe.

Enable Enterprise State Roaming.

Create a system image backup.

Deploy Windows 11.

Restore a system image backup.

Answer Area

Create a system image backup.

Deploy Windows 11.

Restore a system image backup.

NEW QUESTION 165

- (Exam Topic 4)
Your network contains an Active Directory domain. The domain contains a computer named Computer1 that runs Windows 11. You need to enable the Windows Remote Management (WinRM) service on Computer1 and perform the following configurations:

- For the WinRM service, set Startup type to Automatic.
- Create a listener that accepts requests from any IP address.
- Enable a firewall exception for WS-Management communications. Which PowerShell cmdlet should you use?

- A. Connect-WSMan
- B. Enable-PSRemoting
- C. Invoke-WSManAction
- D. Enable-PSSessionConfiguration

Answer: B

NEW QUESTION 169

- (Exam Topic 4)
You have a Microsoft 365 subscription.
All computers are enrolled in Microsoft Intune.
You have business requirements for securing your Windows 11 environment as shown in the following table.

Requirement	Detail
Requirement1	Ensure that Microsoft Exchange Online can be accessed from known locations only.
Requirement2	Lock a device that has a high Microsoft Defender for Endpoint risk score.

What should you implement to meet each requirement? To answer, select the appropriate options in the answer area. NOTE: Each correct selection is worth one point.

Answer Area

Requirement1:

A conditional access policy

A conditional access policy

A device compliance policy

A device configuration profile

Requirement2:

A device compliance policy

A conditional access policy

A device compliance policy

A device configuration profile

- A. Mastered
- B. Not Mastered

Answer: A

Explanation:

Answer Area

Requirement1: A conditional access policy
A conditional access policy
A device compliance policy
A device configuration profile

Requirement2: A device compliance policy
A conditional access policy
A device compliance policy
A device configuration profile

NEW QUESTION 170

- (Exam Topic 4)

You have the device configuration profile shown in the following exhibit.

Kiosk

Windows 10 and later

✓ Basics **2 Configuration settings** ③ Assignments ...

Configure your devices to run in kiosk mode. Before you select a kiosk mode, review your app assignments in the Mobile Apps blade. Apps that you want to run in kiosk mode should be assigned to a Windows device. [Learn more about Windows kiosk mode.](#)

Select a kiosk mode * ① Single app, full-screen kiosk

User login type * ① Auto login (Windows 10, version 1803+)

Application type * ① Add Microsoft Edge browser

This kiosk profile requires Microsoft Edge version 87 and later with Windows 10 version 1909 and later. [Learn more about Microsoft Edge kiosk mode.](#)

Edge Kiosk URL * ① https://contoso.com

Microsoft Edge kiosk mode type ① Public Browsing (InPrivate)

Refresh browser after idle time ① 5

Specify Maintenance Window for App Restarts * ① Require **Not configured**

Maintenance Window Start Time MM/DD/YYYY h:mm:ss A

Maintenance Window Recurrence ① Daily (recommended)

Use the drop-down menus to select the answer choice that completes each statement based on the information presented in the graphic. NOTE: Each correct selection is worth one point.

Answer Area

Users	can access any URL.
	cannot view the address bar in Microsoft Edge.
	can only access URLs that include contoso.com.
	can only access URLs that start with https://contoso.com/ .
Windows 10 devices can have	a single Microsoft Edge instance that has a single tab.
	a single Microsoft Edge instance that has multiple tabs.
	multiple Microsoft Edge instances that have multiple tabs.
	multiple Microsoft Edge instances that each has a single tab.

- A. Mastered
B. Not Mastered

Answer: A

Explanation:

Users can only access URLs that start with https://contoso.com/ Windows 10 and later devices can have multiple Microsoft Edge instances that each has a single tab

he device configuration profile shown in the exhibit is a kiosk browser profile that configures Microsoft Edge to run in kiosk mode. The profile has the following settings:

- Kiosk mode: Enabled
- Kiosk type: Multi-app
- Allowed URLs: https://contoso.com/*
- Address bar: Disabled

These settings mean that users can only access URLs that start with https://contoso.com/ and cannot view the address bar in Microsoft Edge. The kiosk type of Multi-app allows users to open multiple instances of Microsoft Edge, but each instance can only have a single tab. Therefore, users cannot access any URL, cannot view the address bar in Microsoft Edge, and can have multiple Microsoft Edge instances that each has a single tab. References:

<https://docs.microsoft.com/en-us/mem/intune/configuration/kiosk-settings#kiosk-browser-settings>

NEW QUESTION 172

- (Exam Topic 4)

You use Microsoft Defender for Endpoint to protect computers that run Windows 10.

You need to assess the differences between the configuration of Microsoft Defender for Endpoint and the Microsoft-recommended configuration baseline.

Which tool should you use?

- A. Microsoft Defender for Endpoint Power 81 app
B. Microsoft Secure Score
C. Endpoint Analytics
D. Microsoft 365 Defender portal

Answer: B

NEW QUESTION 176

- (Exam Topic 4)

You have a Microsoft Deployment Toolkit (MDT) deployment share named DS1. You import a Windows 11 image to DS1.

You have an executable installer for an application named App1.

You need to ensure that App1 will be installed for all the task sequences that deploy the image.

Which three actions should you perform in sequence? To answer, move the appropriate actions from the list of actions to the answer area and arrange them in the correct order.

Actions

Modify a Windows 11 operating system setting.

Modify a selection profile.

Add App1 to DS1.

Identify the GUID of App1.

Modify CustomSettings.ini.

>

<

Answer Area

1 Add App1 to DS1.

2 Identify the GUID of App1.

3 Modify CustomSettings.ini.

↑

↓

- A. Mastered
 B. Not Mastered

Answer: A

Explanation:

MDT is a tool that allows you to automate the deployment of Windows operating systems and applications. To install an application for all the task sequences that deploy a Windows 11 image, you need to perform the following three actions in sequence:

- > Add App1 to DS1. You can use the Deployment Workbench to import the executable installer of App1 to a folder in your deployment share. This will create an application entry with a unique GUID that identifies App1.
- > Identify the GUID of App1. You can find the GUID of App1 by opening the application properties in the Deployment Workbench and looking at the Application GUID field1. You can copy the GUID to use it later.
- > Modify CustomSettings.ini. You can edit the CustomSettings.ini file in your deployment share to specify which applications to install for each task sequence. You can use the Applications property to list the GUIDs of the applications you want to install, separated by commas1. For example, if you want to install App1 and another application with GUID {1234-5678-90AB-CDEF}, you can use this line:

Applications={GUID of App1},{1234-5678-90AB-CDEF}

These are the three actions you need to perform to ensure that App1 will be installed for all the task sequences that deploy the Windows 11 image from DS1. I hope this helps you.

If you want to learn more about MDT and how to deploy applications with it, you can check out these resources:

- > How to deploy applications with the Microsoft Deployment Toolkit

NEW QUESTION 177

- (Exam Topic 4)

You install a feature update on a computer that runs Windows 10. How many days do you have to roll back the update?

- A. 5
 B. 10
 C. 14
 D. 30

Answer: B

NEW QUESTION 179

- (Exam Topic 4)

You have a Microsoft 365 subscription that contains a user named User1. User1 is assigned a Windows 10/11 Enterprise E3 license. You use Microsoft Intune Suite to manage devices. User1 activates the following devices:

- Device1: Windows 11 Enterprise
- Device2: Windows 10 Enterprise
- Device3: Windows 11 Enterprise

How many more devices can User1 activate?

- A. 2
 B. 3
 C. 7
 D. 8

Answer: A

NEW QUESTION 183

- (Exam Topic 4)

Your network contains an Active Directory domain named contoso.com. The domain contains a computer named Computer1 that runs Windows 10. You have the groups shown in the following table.

Name	Type	Location
Group1	Universal distribution group	Contoso.com
Group2	Global security group	Contoso.com
Group3	Group	Computer1
Group4	Group	Computer1

Which groups can you add to Group4?

- A. Group2only
- B. Group1 and Group2 only
- C. Group2 and Group3 only
- D. Group1, Group2, and Group3

Answer: C

NEW QUESTION 184

.....

Thank You for Trying Our Product

We offer two products:

1st - We have Practice Tests Software with Actual Exam Questions

2nd - Questions and Answers in PDF Format

MD-102 Practice Exam Features:

- * MD-102 Questions and Answers Updated Frequently
- * MD-102 Practice Questions Verified by Expert Senior Certified Staff
- * MD-102 Most Realistic Questions that Guarantee you a Pass on Your First Try
- * MD-102 Practice Test Questions in Multiple Choice Formats and Updates for 1 Year

100% Actual & Verified — Instant Download, Please Click
[Order The MD-102 Practice Test Here](#)