



## **Cisco**

### **Exam Questions 200-901**

Developing Applications and Automating Workflows using Cisco Core Platforms (DEVASC)

## About ExamBible

*[Your Partner of IT Exam](#)*

## Found in 1998

ExamBible is a company specialized on providing high quality IT exam practice study materials, especially Cisco CCNA, CCDA, CCNP, CCIE, Checkpoint CCSE, CompTIA A+, Network+ certification practice exams and so on. We guarantee that the candidates will not only pass any IT exam at the first attempt but also get profound understanding about the certificates they have got. There are so many alike companies in this industry, however, ExamBible has its unique advantages that other companies could not achieve.

## Our Advances

### \* 99.9% Uptime

All examinations will be up to date.

### \* 24/7 Quality Support

We will provide service round the clock.

### \* 100% Pass Rate

Our guarantee that you will pass the exam.

### \* Unique Gurantee

If you do not pass the exam at the first time, we will not only arrange FULL REFUND for you, but also provide you another exam of your claim, ABSOLUTELY FREE!

### NEW QUESTION 1

- (Exam Topic 2)

Refer to the exhibit.

```
1  #!/bin/bash
2  apt install nginx
3  export AVAILABLE_SITES_DIR = '/etc/nginx/sites-available'
4  export ENABLED_SITES_DIR = '/etc/nginx/sites_enabled'
5  cd /opt/nginx
6  cat sites.txt | while read site;
7      do
8      cp template.conf "$AVAILABLE_SITES_DIR/$site";
9      ln -s "$AVAILABLE_SITES_DIR/$site" "$ENABLED_SITES_DIR";
10     chown www-data:www-data "$AVAILABLE_SITES_DIR/$site";
11 done
```

An engineer must configure a load balancer server. The engineer prepares a script to automate workflow by using Bash. The script install the nginx package, moves to the /optAtginx directory, and reads the sites M We (or further processing Based on the script workflow, which process is being automated within the loop by using the information mi sites txt?

- A. creating a new Me Based on template .conf in the /etc/ngin/sites\_enabled directory for each lie in the sites txt fil
- B. and then changing the file execution permission.
- C. creating a Me per each the in sites txt with the information in template con
- D. creating a link for the previously created fil
- E. and then changing the ownership of the created files
- F. using the content of the file to create the template conf fil
- G. creating a link from the created file to the/etc/nginx/files.enable
- H. and then changing the file execution permissions.
- I. using the information in the file to create a set of empty files in the /etchginx/sites\_enabled directory and then assigning the owner of the file.

**Answer: B**

### NEW QUESTION 2

- (Exam Topic 2)

A developer needs a list of clients connected to a specific device in a Meraki network. After making a REST API call, the developer receives an unfamiliar response code. Which Cisco DevNet resource should be used to identify the meaning of the response code?

- A. API documentation
- B. Sandbox
- C. Learning Labs
- D. Code Exchange

**Answer: A**

### NEW QUESTION 3

- (Exam Topic 2)

Which protocol runs over TCP port 22?

- A. SSH
- B. HTTP
- C. Telnet
- D. NETCONF

**Answer: A**

### NEW QUESTION 4

- (Exam Topic 2)

What are two functions of a routing table on a network device? (Choose two.)

- A. It lists entries more than two hops away.
- B. It lists the routes to a particular destination.
- C. It lists the routes to drop traffic.
- D. It lists hosts that are one hop away.
- E. It lists the static and dynamic entries.

**Answer: BE**

### NEW QUESTION 5

- (Exam Topic 2)

Before which process is code review performed when version control is used?

- A. Branching code
- B. Merge of code
- C. Checkout of code
- D. Committing code

**Answer: D**

#### NEW QUESTION 6

- (Exam Topic 2)

A new application is being developed with specific platform requirements. The platform and application deployment and the ongoing platform management must be fully automated. The application includes a large database component that has significant disk I/O requirements. Which application deployment type meets the requirements?

- A. Python virtual environment
- B. virtual machine
- C. bare metal
- D. container

**Answer: B**

#### NEW QUESTION 7

- (Exam Topic 2)

In which two ways is an application characterized when interacting with a webhook? (Choose two.)

- A. codec
- B. receiver
- C. transaction monitor
- D. processor
- E. listener

**Answer: BE**

#### NEW QUESTION 8

- (Exam Topic 2)

What is the difference between YAML and JSON data structure?

- A. YAML uses spaces; JSON uses parentheses
- B. YAML uses indentation; JSON uses brackets and braces
- C. YAML uses brackets and braces; JSON uses indentation
- D. YAML uses parentheses; JSON uses spaces

**Answer: A**

#### NEW QUESTION 9

- (Exam Topic 2)

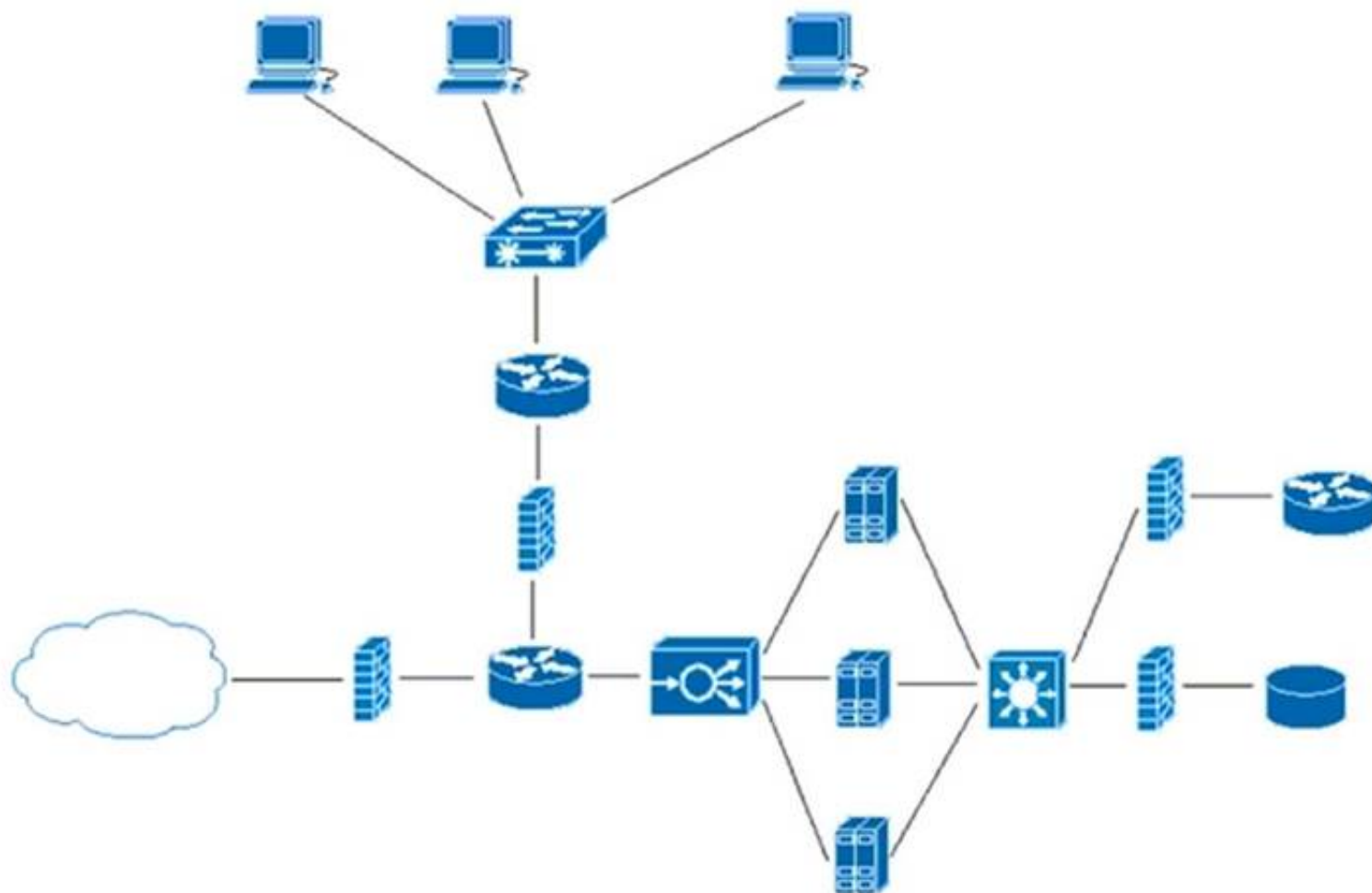
A developer creates a web application that receives a username and password and uses them to sync the credentials to other services through HTTPS. API keys to services are part of the configuration files of the application, but the credentials to the database that stores the synchronization logs are obtained through an external vault service. What is the security issue in this scenario?

- A. Communication between the application and the services is not encrypted.
- B. The database credentials should be stored in the configuration files so that they are secured on the same server.
- C. The API keys are stored in the configuration files but should be stored in the vault service.
- D. The synchronization logs should be encrypted and not stored in a relational database.

**Answer: A**

#### NEW QUESTION 10

- (Exam Topic 2)



Refer to the exhibit. What does the load balancer enable in the network topology?

- A. hosted application to access Internet services
- B. external requests to be routed to the application servers
- C. workstations to access the Internet
- D. application to access the database server

**Answer: C**

#### NEW QUESTION 10

- (Exam Topic 2)

What are two benefits of model-driven programmability?

- A. model-driven APIs for abstraction and simplification
- B. single choice of transport, protocol, and encoding
- C. model-based, structured, and human friendly
- D. easier to design, deploy, and manage APIs
- E. models decoupled from transport, protocol, and encoding

**Answer: DE**

#### NEW QUESTION 15

- (Exam Topic 2)

What is the function of IP address in networking?

- A. specifies the type of traffic that is allowed to roam on a network
- B. represents the unique ID that is assigned to one host on a network
- C. specifies resource's location and the mechanism to retrieve it
- D. represents a network connection on specific devices

**Answer: B**

#### NEW QUESTION 19

- (Exam Topic 2)

How does a synchronous API request differ from an asynchronous API request?

- A. clients receive responses with a task id for further processing
- B. clients subscribe to a webhook for operation results
- C. clients are able to access the results immediately
- D. clients poll for the status of the execution of operations

**Answer: C**

#### NEW QUESTION 20

- (Exam Topic 2)

class Native.Interface.FastEthernet

Bases: Entity

Class Hierarchy: Native Interface FastEthernet

This class represents configuration data.

FastEthernet IEEE 802.3

name(key)

type: str

pattern: ([0-9]/)([0-9]/)([1-3][0-9][4[0-8]]([0-9])\[0-9]+)?

description

Interface specific description

type: str

pattern: \*

flowcontrol

Configure flow operation

type: Flowcontrol

isis

IS-IS commands

type: Isis

keepalive

Enable keepalive

type: bool

keepalive\_settings

type: KeepaliveSettings

Refer to the exhibit. Drag and drop the code snippets from the bottom to the blanks in the code to enable keepalive for the FastEthernet 2/0 interface. Not all options are used.

```

from ydk.services import CRUDService
from ydk.providers import NetconfServiceProvider as nc
from ydk.models.cisco_ios_xe import Cisco IOS XE native as model
ip = '10.10.20.48'
prtc1 = 'ssh'
user = 'developer'
psw = 'P@s$W0rD'
port = 830
provider = nc(address=ip, port=port, username=user, password=psw, protocol=prtc1)
crud = CRUDService()

```

```

interface.name = '2/0'

```

```

if interface data:
    print('Keepalive is enabled.')
else:
    print('Keepalive is not enabled.')

```

interface\_data = crud.update(provider, interface)

interface.keepalive = True

interface\_data = crud.read(provider, interface)

interface = model.Native.Interface.FastEthernet()

interface.FastEthernet.keepalive\_settings.keepalive = True

interface = model.Native.Interface()

- A. Mastered
- B. Not Mastered

Answer: A

Explanation:



```
from ydk.services import CRUDService
from ydk.providers import NetconfServiceProvider as nc
from ydk.models.cisco ios xe import Cisco IOS XE native as model
ip = '10.10.20.48'
prctl = 'ssh'
user = 'developer'
psw = 'P@s$W0rD'
port = 830
provider = nc(address=ip, port=port, username=user, password=psw, protocol=prctl)
crud = CRUDService()

interface = model.Native.Interface.FastEthernet()

interface.name = '2/0'

interface.keepalive = True

interface_data = crud.read(provider, interface)

if interface_data:
    print('Keepalive is enabled.')
else:
    print('Keepalive is not enabled.')
```

```
interface_data = crud.update(provider, interface)
```

```
interface.FastEthernet.keepalive_settings.keepalive = True
```

```
interface = model.Native.Interface()
```

#### NEW QUESTION 21

- (Exam Topic 2)

A local Docker alpine image has been created with an image ID of a391665405fe and tagged as “latest”. Which command creates a running container based on the tagged image, with the container port 8080 bound to port 80 on the host?

- A. docker build -p 8080:80 alpine:latest
- B. docker exec -p 8080:80 alpine:latest
- C. docker start -p 8080:80 alpine:latest
- D. docker run -p 8080:80 alpine:latest

**Answer:** D

#### Explanation:

[https://docs.docker.com/get-started/02\\_our\\_app/](https://docs.docker.com/get-started/02_our_app/)

#### NEW QUESTION 24

- (Exam Topic 2)

What are two benefits of using VLANs? (Choose two.)

- A. limits the devices that can join the network
- B. segments the broadcast domain
- C. extends the broadcast domain
- D. allows all network devices to be accessible from any host on the network
- E. enables the logical grouping of devices that belong to different Layer 2 devices

**Answer:** BE

#### NEW QUESTION 26

- (Exam Topic 2)

Why is refactoring done during test-driven development?

- A. to enable larger objects and longer methods
- B. to improve maintainability and readability
- C. to ensure that the previous uses of the objects are explained
- D. to ensure the duplication of essential code

**Answer:** B

#### NEW QUESTION 29

- (Exam Topic 2)

What is a benefit of model-driven programmability?

- A. It addresses the static architecture of traditional networks being decentralized and complex.
- B. By modeling data, it ensures that vast quantities of data are usable for monitoring.
- C. It provides a programmatic and standards-based way of writing configurations to any network device.
- D. It simplifies management and operations by decoupling the networking hardware from its control mechanism.

**Answer:** D

#### NEW QUESTION 34

- (Exam Topic 2)

Which HTTP response status code means “Forbidden”?

- A. 500
- B. 401
- C. 403
- D. 502

**Answer:** C

#### Explanation:

Reference: <https://developer.mozilla.org/en-US/docs/Web/HTTP/Status/403>

#### NEW QUESTION 38

- (Exam Topic 2)

Several teams at a company are developing a new CRM solution to track customer interactions with a goal of improving customer satisfaction and driving higher revenue. The proposed solution contains these components:

- MySQL database that stores data about customers
- HTML5 and JavaScript UI that runs on Apache
- REST API written in Python

What are two advantages of applying the MVC design pattern to the development of the solution? (Choose two.)

- A. to enable multiple views of the same data to be presented to different groups of users
- B. to provide separation between the view and the model by ensuring that all logic is separated out into the controller
- C. to ensure data consistency, which requires that changes to the view are also made to the model
- D. to ensure that only one instance of the data model can be created
- E. to provide only a single view of the data to ensure consistency

**Answer:** BD

#### NEW QUESTION 43

- (Exam Topic 2)

How are load balancers used in modern application deployment?

- A. Allow traffic to continue as new compute units are brought up and old compute units are taken down.
- B. Allow http and https traffic to continue as old compute units are discontinued before new units are brought up.
- C. Turn off traffic and take down compute units, then update and bring the compute units back up.
- D. Bring up new compute units, test the compute units, and switch the traffic from old units to new units.

**Answer:** D

#### NEW QUESTION 47

- (Exam Topic 2)

Refer to the exhibit.

```
>>> response_data = requests.get(base_url + request_url, cookies=cookies)
Traceback (most recent call last):
  File "<stdin>", line 1, in <module>
NameError: name 'requests' is not defined
>>>
```

A Python code has been written to query a device. The executed code results in the error shown. Which action resolves the problem?

- A. import json
- B. requests("GET", base\_url + request\_url, cookies=cookies)
- C. pip install requests
- D. import requests

**Answer:** D

#### NEW QUESTION 49

- (Exam Topic 2)

Which implementation creates a group of devices on one or more LANs that are configured to communicate as if they were attached to the same wire?

- A. WLAN
- B. VLAN
- C. IPsec
- D. HSRP

**Answer:** B

#### NEW QUESTION 53

- (Exam Topic 2)



Which protocol must be allowed on the firewall so that NTP services work properly?

- A. ICMP
- B. BGP
- C. UDP
- D. TCP

**Answer:** C

**Explanation:**

Reference:

<https://www.cisco.com/c/en/us/support/docs/ip/network-time-protocol-ntp/108076-ntp-troubleshoot.html>

#### NEW QUESTION 57

- (Exam Topic 2)

A developer created a new secure API and is testing the functionality locally. The API was added to a container for further testing, and other team members and applications need to connect to the API. Which command exposes the API in the container as port 8443 and allows connections external to the host?

- A. docker run -p 127.0.0.1:80:8443/tcp myapiservice
- B. docker run -p 0.0.0.0:443:8443/tcp myapiservice
- C. docker run -p 0.0.0.0:8443:443/tcp myapiservice
- D. docker run -p 127.0.0.1:443:8443/tcp myapiservice

**Answer:** C

#### NEW QUESTION 59

- (Exam Topic 1)

Fill in the blanks to complete the Python script to update the Webex Teams membership of a room using the Python requests library import requests

```
import requests
url = "https://api.ciscospark.com/v1/memberships/Y2lzY29zcGfya2ov371508156INISVAvOTJmM2RkOWEiNjc1ZC00YTQxLTljNDEtMmFiZGY4OWY0NGY0OjExNzJkNmYwLTJiY2MhMTFhOS1iOWI3LWNmMjg3MTJhYTgzNw"

payload = [{"isModerator": true}]
headers = {
    'Authorization': 'Bearer ',
    'Content-Type': 'application/json'
}

response = requests ( "PATCH" url, headers= , data = )
print(response.text.encode('utf8'))
```

- A. Mastered
- B. Not Mastered

**Answer:** A

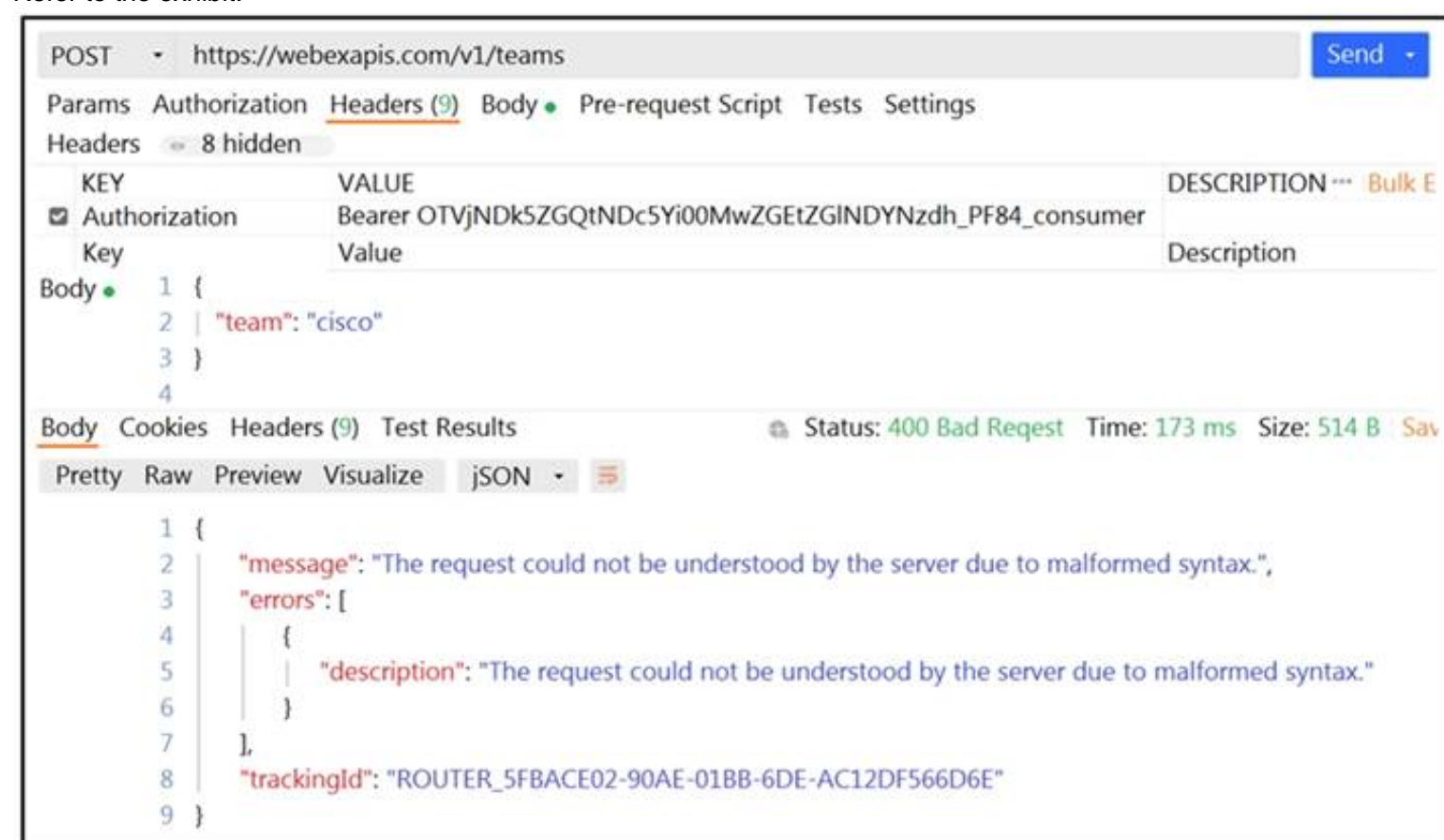
**Explanation:**

request, headers , payload

#### NEW QUESTION 62

- (Exam Topic 2)

Refer to the exhibit.



POST - https://webexapis.com/v1/teams

Params Authorization Headers (9) Body Pre-request Script Tests Settings

Headers 8 hidden

KEY	VALUE	DESCRIPTION
Authorization	Bearer OTVjNDk5ZGQtNDc5Yi00MwZGZGtZGINDYNzdh_PF84_consumer	

Body {

```
1 {
2   "team": "cisco"
3 }
4
```

Body Cookies Headers (9) Test Results Status: 400 Bad Request Time: 173 ms Size: 514 B

Pretty Raw Preview Visualize JSON

```
1 {
2   "message": "The request could not be understood by the server due to malformed syntax.",
3   "errors": [
4     {
5       "description": "The request could not be understood by the server due to malformed syntax."
6     }
7   ],
8   "trackingId": "ROUTER_5FBACE02-90AE-01BB-6DE-AC12DF566D6E"
9 }
```

A developer wants to create a room named cisco through Webex API. The developer prepares the request by putting an API token inside the authorization header; however, the given HTTP call returns error code 400. How must the call parameters be changed to ensure a valid response?

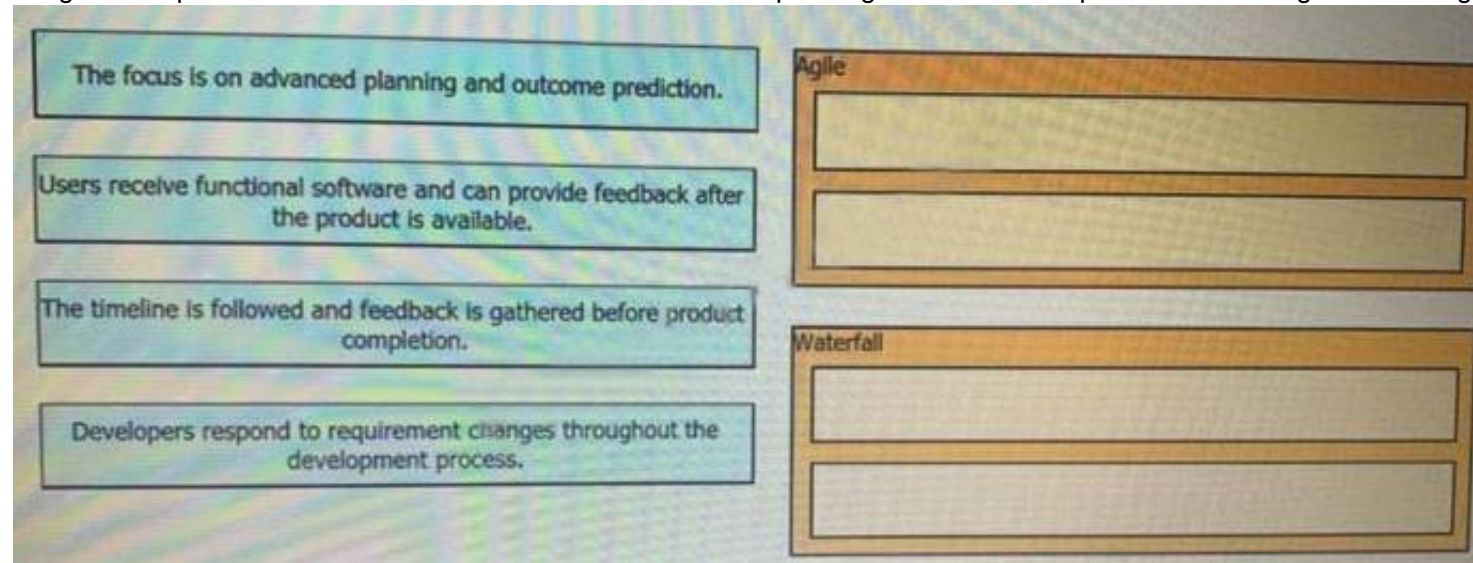
- A. Replace the team body parameter with the name body parameter.
- B. Replace cisco with a valid name for a team.
- C. Change the token in the header with the authorization token.
- D. Change the HTTP method of the call to PUT.

**Answer:** A

#### NEW QUESTION 66

- (Exam Topic 1)

Drag and drop the characteristics from the left onto the corresponding software development methodologies on the right?



The focus is on advanced planning and outcome prediction.

Users receive functional software and can provide feedback after the product is available.

The timeline is followed and feedback is gathered before product completion.

Developers respond to requirement changes throughout the development process.

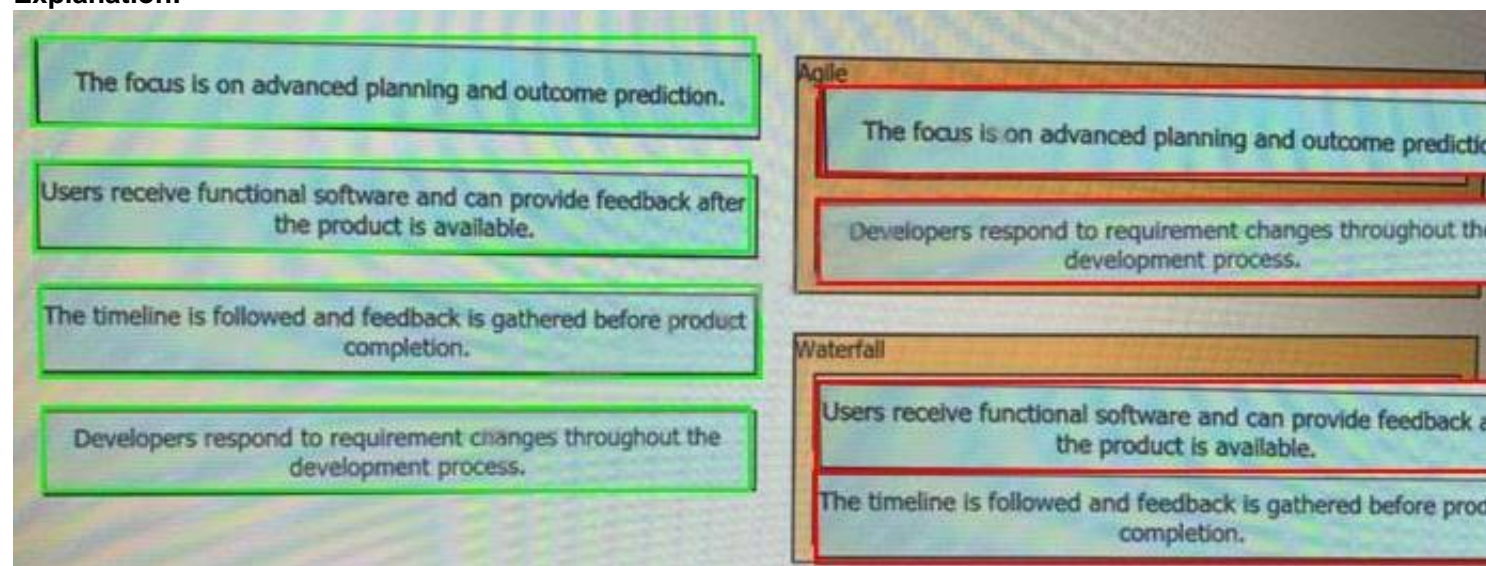
Agile

Waterfall

- A. Mastered
- B. Not Mastered

**Answer:** A

**Explanation:**



The focus is on advanced planning and outcome prediction.

Users receive functional software and can provide feedback after the product is available.

The timeline is followed and feedback is gathered before product completion.

Developers respond to requirement changes throughout the development process.

Agile

Waterfall

#### NEW QUESTION 71

- (Exam Topic 1)

What is used in Layer 2 switches to direct packet transmission to the intended recipient?

- A. spanning tree
- B. IPv4 address
- C. IPv6 address
- D. MAC address

**Answer:** D

#### NEW QUESTION 74

- (Exam Topic 1)

What are two benefit of managing network configuration via APIs? (Choose two.)

- A. configuration on devices becomes less complex
- B. more security due to locking out manual device configuration
- C. increased scalability and consistency of network changes
- D. eliminates the need of legacy management protocols like SNMP
- E. reduction in network changes performed manually

**Answer:** CE

#### NEW QUESTION 79

- (Exam Topic 1)

Refer to the exhibit.

```
1      ---
2  - hosts: {{ router }}
3    gather_facts: true
4    connection: local
5
6  tasks:
7    - ios_command
8      commands:
9        - show run
10     provider: "{{ router_credentials }}"
11     register: config
12
13  - copy:
14     content: "{{ config.stdout[0] }}"
15     dest: "etc/ansible/configs/command_{{ router_hostname }}.txt
16  ...
```

What is the effect of this Ansible playbook on an IOS router?

- A. A new running configuration is pushed to the IOS router.
- B. The current running configuration of the IOS router is backed up.
- C. The start-up configuration of the IOS router is copied to a local folder.
- D. A new start-up configuration is copied to the IOS router.

**Answer:** B

#### NEW QUESTION 84

- (Exam Topic 1)

Refer to the exhibit.



```
[
  {
    "type": "fruit",
    "items": [
      {
        "color": "green",
        "items": [
          "kiwi",
          "grape"
        ]
      },
      {
        "color": "red",
        "items": [
          "strawberry",
          "apple"
        ]
      }
    ]
  },
  {
    "type": "vegs",
    "items": [
      {
        "color": "green",
        "items": [
          "lettuce"
        ]
      },
      {
        "color": "red",
        "items": [
          "pepper"
        ]
      }
    ]
  }
]
```

A REST API return this JSON output for a GET HTTP request, Which has assigned to a variable called "vegetables" Using python, which output is the result of this command?

```
print(filter(lambda l: l['type'] == 'fruit', vegetables)[0]['items'][0]['items'][0])
```

- A. Lettuce
- B. Kiwi
- C. ['kiwi', 'grape']
- D. {'color': 'green', 'items': ['kiwi', 'grape']}

**Answer: B**

#### NEW QUESTION 88

- (Exam Topic 1)

In which situation would an edge computing solution be used?

- A. where low latency is needed
- B. where high CPU throughput is needed
- C. where fast memory is needed
- D. where high disk space is needed

**Answer: A**

### NEW QUESTION 93

- (Exam Topic 1)

What are two characteristics of Bare Metal environments that are related to application deployment? (Choose two.)

- A. Provide the hypervisor to host virtual servers
- B. Specifically designed for container-based workloads.
- C. Provides workloads with access to hardware features
- D. Suitable for legacy application that do not support virtualization
- E. Not compatible with other cloud services such as PaaS or SaaS offerings.

**Answer:** CD

### NEW QUESTION 94

- (Exam Topic 1)

Which service provides a directory lookup for IP addresses and host names?

- A. DNS
- B. DHCP
- C. SNMP
- D. NAT

**Answer:** A

### NEW QUESTION 98

- (Exam Topic 1)

Fill in the blanks to complete the python script to retrieve a list of network devices using the Cisco DNA center API.

```
import requests
url = "https://myDNAserver/dna/intent/api/v1/network-device"
payload = {}
headers = {'x-auth-token': 'eyJ0eXAiOiJKV1QiLCJhbGciOiJIUzI1NiJ9.eyJzdWUiOiI1ZDE0OWZkMjhlZTY2MmQ3NGM5YzE5ZTIiLCJmYzMCiSlmV4cCI6MTU3MjM3ODE5MCwidXNlcm5hbWUiOiJraXN371274739.zhK5LPQd501ZUpZI0IH_qrgOXtItINbxSFFF7JOEtRIs'}
}
response = requests.request( , url,
headers = , data = )
print(response.text.encode('utf8'))
```

- A. Mastered
- B. Not Mastered

**Answer:** A

#### Explanation:

Solution as below.

```
import requests
url = "https://myDNAserver/dna/intent/api/v1/network-device"
payload = {}
headers = {'x-auth-token': 'eyJ0eXAiOiJKV1QiLCJhbGciOiJIUzI1NiJ9.eyJzdWUiOiI1ZDE0OWZkMjhlZTY2MmQ3NGM5YzE5ZTIiLCJmYzMCiSlmV4cCI6MTU3MjM3ODE5MCwidXNlcm5hbWUiOiJraXN371387657.zhK5LPQd501ZUpZI0IH_qrgOXtItINbxSFFF7JOEtRIs'}
}
response = requests.request("GET", , url,
headers = headers, data = payload)
print(response.text.encode('utf8'))
```

### NEW QUESTION 100

- (Exam Topic 1)

A developer is writing an application that a REST API and the application requires a valid from the API which element of the response is used in the conditional check?

- A. URL
- B. Status code
- C. Link
- D. Body
- E. Headers

**Answer:** B

### NEW QUESTION 105

- (Exam Topic 1)

Refer to the exhibit.

```
docker run -p 3000:5000 f877cbf2ff33
```

A process on the host wants to access the service running inside this Docker container. Which port is used to make a connection?

- A. only outbound connections between 3000 and 5000 are possible
- B. port 3000
- C. any port between 3000 and 5000
- D. port 5000

**Answer:** B

#### NEW QUESTION 108

- (Exam Topic 1)

Refer to Exhibit.

```
<books>
  <science>
    <biology>10.00</biology>
    <geology>9.00</geology>
    <chemistry>8.00</chemistry>
  </science>
  <math>
    <calculus>20.00</calculus>
    <algebra>12.00</algebra>
  </math>
</books>
```

Which JSON is equivalent to the XML-encoded data.

A)

```
{
  "books": {
    "science": {
      "biology": "10.00",
      "geology": "9.00",
      "chemistry": "8.00"
    },
    "math": {
      "calculus": "20.00",
      "algebra": "12.00"
    }
  }
}
```

B)

```
[ {
  "books": {
    "science": {
      "biology": "10.00",
      "geology": "9.00",
      "chemistry": "8.00"
    },
    "math": {
      "calculus": "20.00",
      "algebra": "12.00"
    }
  }
} ]
```

C)



```
{
  "books": [
    "science", {
      "biology": "10.00",
      "geology": "9.00",
      "chemistry": "8.00"
    },
    "math", {
      "calculus": "20.00",
      "algebra": "12.00"
    }
  ]
}
D)
{
  "books": [
    "science": {
      "biology": "10.00",
      "geology": "9.00",
      "chemistry": "8.00"
    },
    "math": {
      "calculus": "20.00",
      "algebra": "12.00"
    }
  ]
}
```

- A. Option A
- B. Option B
- C. Option C
- D. Option D

**Answer:** A

#### NEW QUESTION 113

- (Exam Topic 1)

Users cannot access a webserver and after the traffic is captured, the capture too\* shows an ICMP packet that reports "communication administratively prohibited"  
What Is the cause of this webserver access Issue?

- A. An access list along the path is blocking the traffic
- B. The traffic is not allowed to be translated with NAT and dropped.
- C. Users must authenticate on the webserver to access It
- D. A router along the path is overloaded and thus dropping traffic

**Answer:** A

#### NEW QUESTION 114

- (Exam Topic 1)

What is the purpose of a MAC address?

- A. To uniquely identify a router in a LAN
- B. To uniquely identify a network interface in a LAN
- C. To uniquely identify a device on the internet
- D. To uniquely identify a switch in a LAN

**Answer:** B

#### NEW QUESTION 116

- (Exam Topic 1)

Which device is used to transport traffic from one broadcast domain to another broadcast domain?

- A. load balancer
- B. layer 2 switch
- C. router
- D. proxy server

Answer: C

#### NEW QUESTION 117

- (Exam Topic 1)

Drag and drop the network automation interfaces from the left onto the transport protocols that they support on the right. Not all options are used.

SSH	gRPC
HTTP	
HTTP/2	NETCONF
HTTPS	
	RESTCONF

- A. Mastered
- B. Not Mastered

Answer: A

Explanation:

SSH	gRPC
HTTP	HTTP/2
HTTP/2	NETCONF
HTTPS	SSH
	RESTCONF
	HTTPS

#### NEW QUESTION 120

- (Exam Topic 1)

Which platform has an API that be used to obtain a list of vulnerable software on user devices?

- A. Cisco Umbrella
- B. Cisco Firepower
- C. Cisco Identity Services Engine
- D. Cisco Advanced Malware Protection

Answer: D

#### NEW QUESTION 124

- (Exam Topic 1)

In DNS, which record specifies an alias that refers to another name that ultimately resolves to an IP address?

- A. AAA
- B. SOA
- C. NS
- D. CNAME

Answer: D

Explanation:

Reference: <https://ns1.com/resources/dns-types-records-servers-and-queries>

#### NEW QUESTION 129

- (Exam Topic 1)

Which network device monitors incoming and outgoing traffic and decides whether to allow or block specific traffic based on a defined set of rules?

- A. switch
- B. load balancer
- C. reverse proxy
- D. firewall

Answer: D

#### NEW QUESTION 130

- (Exam Topic 1)

What is a tenet of test-driven development?

- A. write documentation for tests
- B. write tests after adding new blocks of code
- C. write and run tests before writing new code
- D. run tests after writing new code

Answer: C

#### NEW QUESTION 134

- (Exam Topic 1)

Refer to the exhibit.

### List Rooms

List rooms.

The `title` of the room for 1:1 rooms will be the display name of the other person.

By default, lists rooms to which the authenticated user belongs.

Long result sets will be split into `pages`.

**GET** `/v1/rooms`

### Query Parameters

Name	Description
<code>teamId</code> string	List rooms associated with a team, by ID.
<code>type</code> string	List rooms by tape. <i>Possible values: direct, group</i>
<code>sortBy</code> string	Sort results. <i>Possible values: id, lastactivity, created</i>
<code>max</code> number	Limit the maximum number of rooms in the response.  Default: <code>100</code>

Fill in the blank to complete the query parameter and value so that the result set is returned in reverse chronological order (most recent first) based on when message were entered.

HTTP GET `/v1/rooms` \_\_\_\_\_

- A. Mastered
- B. Not Mastered

Answer: A

Explanation:

HTTP GET `/v1/rooms` `?sortBy=lastactivity`

#### NEW QUESTION 139

- (Exam Topic 1)

Which statement about authentication a RESTCONF API session with a router that runs Cisco IOS XE software is true?

- A. OAuth must be used.
- B. A token must be retrieved and the associated string must be embedded in the X-Auth-Token header.
- C. Basic authentication must be used.
- D. No authentication is required.

Answer: C

NEW QUESTION 140

- (Exam Topic 1)

An application calls a REST API and expects a result set of more than 550 records, but each time the call is made, only 25 are returned. Which feature limits the amount of data that is returned by the API?

- A. pagination
- B. payload limit
- C. rate limiting
- D. service timeouts

Answer: A

NEW QUESTION 144

- (Exam Topic 1)

Which statement describes the benefit of using functions in programming?

- A. Functions allow problems to be split into simpler, smaller groups, and reduce code repetition, which makes the code easier to read.
- B. Functions ensure that a developer understands the inner logic contained before using them as part of a script or application.
- C. Functions create the implementation of secret and encrypted algorithms.
- D. Functions store mutable values within a script 01 application.

Answer: A

NEW QUESTION 147

- (Exam Topic 1)

Drag and drop the function on the left onto the type of plane that handles the function on the right.

handles transit traffic

handles signaling protocols destined to the device

handles hardware forwarding decisions

handles configuration change protocols destined to the device

handles BGP destined to the device

handles NETCONF destined to the device

Control Plane

Management Plane

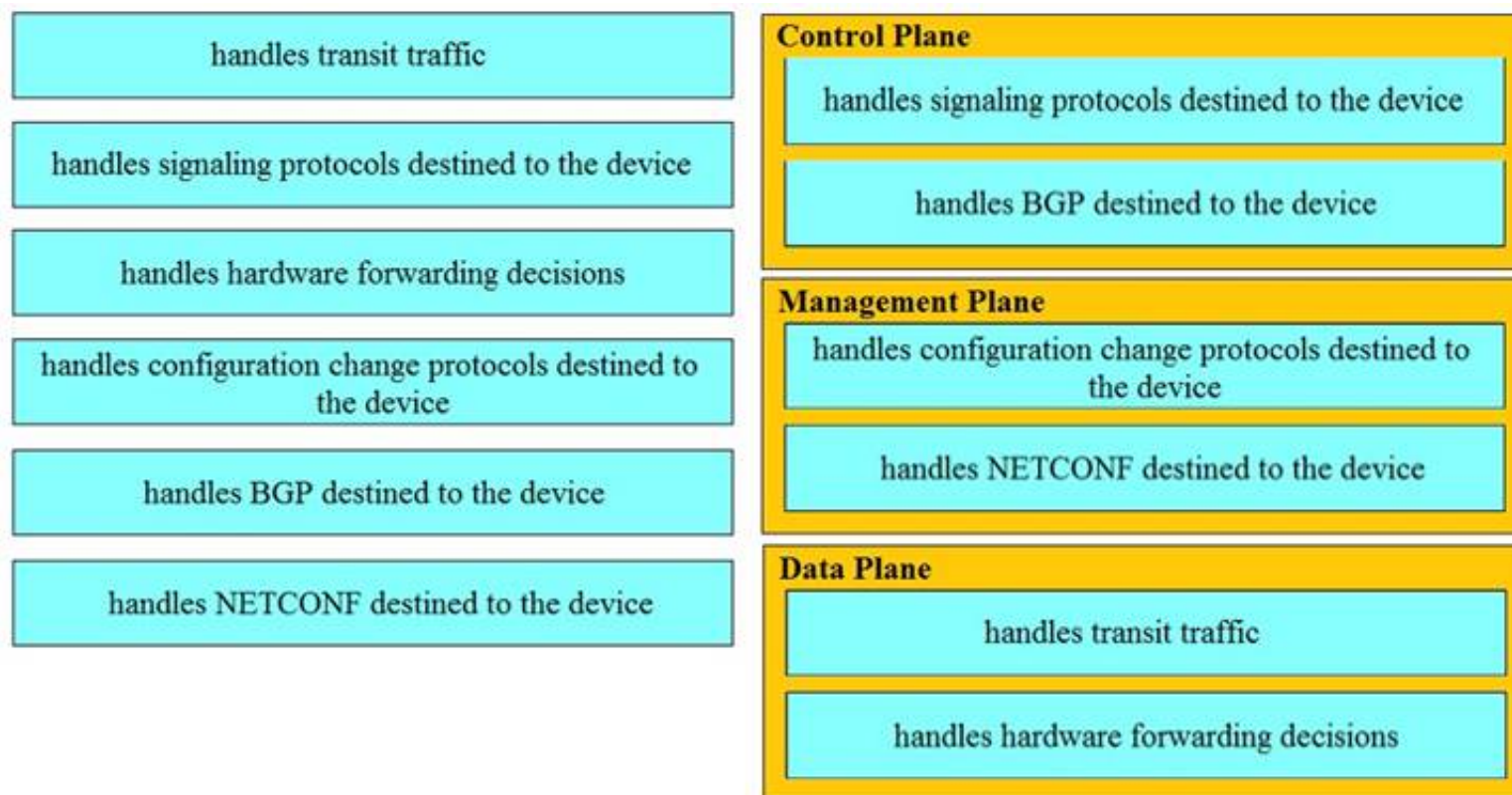
Data Plane

- A. Mastered
- B. Not Mastered

Answer: A

Explanation:





#### NEW QUESTION 151

- (Exam Topic 1)

What are the two purposes for using a VLAN in a network? (Choose two)

- A. It is used to create the routing table.
- B. It creates a collection of MAC addresses.
- C. It is used for VM network traffic.
- D. It segments a network.
- E. It creates a broadcast domain.

**Answer:** DE

#### NEW QUESTION 155

- (Exam Topic 1)

Refer to the exhibit.

```
<books>
  <science>
    <biology>10.00</biology>
    <geology>9.00</geology>
    <chemistry>8.00</chemistry>
  </science>
  <math>
    <calculus>20.00</calculus>
    <algebra>12.00</algebra>
  </math>
</books>
```

Which JSON is equivalent to the XML –encoded data?

```
A. [ {
  "books": {
    "science": {
      "biology": "10.00",
      "geology": "9.00",
      "chemistry": "8.00"
    },
    "math": {
      "calculus": "20.00",
      "algebra": "12.00"
    }
  }
} ]

B. {
  "books": [
    "science": {
      "biology": "10.00",
      "geology": "9.00",
      "chemistry": "8.00"
    },
    "math": {
      "calculus": "20.00",
      "algebra": "12.00"
    }
  ]
}

C. {
  "books": [
    "science": {
      "biology": "10.00",
      "geology": "9.00",
      "chemistry": "8.00"
    },
    "math": {
      "calculus": "20.00",
      "algebra": "12.00"
    }
  ]
}

D. {
  "books": [
    "science", {
      "biology": "10.00",
      "geology": "9.00",
      "chemistry": "8.00"
    },
    "math", {
      "calculus": "20.00",
      "algebra": "12.00"
    }
  ]
}
```

- A. Option A
- B. Option B
- C. Option C
- D. Option D

**Answer:** A

**NEW QUESTION 156**



- (Exam Topic 1)

Which platform is run directly using a hypervisor?

- A. bare metal systems
- B. containers
- C. virtual machines
- D. applications

**Answer:** C

#### NEW QUESTION 157

- (Exam Topic 1)

Which platform is run directly using a hypervisor?

- A. Virtual
- B. Bare metal systems
- C. Containers
- D. Applications

**Answer:** C

#### NEW QUESTION 161

- (Exam Topic 1)

What is the benefit of edge computing?

- A. It reduces network latency by moving processing closer to the data source.
- B. It simplifies security as devices and processing are brought closer together
- C. It removes the need for centralized data processing.
- D. It reduces data velocity from devices or other data sources.

**Answer:** A

#### Explanation:

Reference: <https://blogs.cisco.com/networking/time-to-get-serious-about-edge-computing>

#### NEW QUESTION 162

- (Exam Topic 1)

Which two use cases are supported by Meraki APIs? (Choose two.)

- A. Retrieve live streams from a Meraki Camera.
- B. Build a custom Captive Portal for Mobile Apps.
- C. Configure network devices via the Dashboard API.
- D. Build location-aware apps from Wi-Fi and LoRaWAN devices.
- E. Deploy applications onto the devices.

**Answer:** BC

#### NEW QUESTION 165

- (Exam Topic 1)

Package updates from a local server fail to download. However, the same updates work when a much slower external repository is used. Why are local updates failing?

- A. The update utility is trying to use a proxy to access the internal resource.
- B. The Internet connection is too slow.
- C. The Internet is down at the moment, which causes the local server to not be able to respond.
- D. The server is running out of disk space.

**Answer:** A

#### NEW QUESTION 170

- (Exam Topic 1)

Refer to the exhibit.

```
$ pyang -f tree Cisco-IOS-XE-native.yang
module: Cisco-IOS-XE-native
  +--rw native
    +--rw logging
      +--rw monitor|
        +--rw severity?  logging-level-type

$ curl --insecure -v -X PATCH \
  "https://ios-xe-mgmt-latest.cisco.com:9443/restconf/data/Cisco-IOS-XE-native:native" \
  -H 'Authorization: Basic ZGV2ZWxvcGVyOkMxc2NvMTIzNDU=' -H 'Accept: application/yang-data+json' \
  -H 'Content-Type: application/yang-data+json' \
  -d '{ "Cisco-IOS-XE-native:native" : { "logging" : { "monitor" : { "severity" : "alerts" }} } }'
> ...
< ...
< HTTP/1.1 204 No Content
```

The definition of the YANG module and a RESTCONF query sent to a Cisco Ioc XE device is shown. Which statement is correct if the RESTCONF interface responds with a 204 status code?

- A. The query failed at retrieving the logging seventy level.
- B. The query failed to set the logging seventy level due to an invalid path.
- C. The query retrieved the logging seventy level.
- D. The query updated the logging seventy level or created it if not present on the device.

**Answer:** D

**Explanation:**

Reference:

[https://www.cisco.com/c/en/us/td/docs/ios-xml/ios/prog/configuration/1611/b\\_1611\\_programmability\\_cg/restco](https://www.cisco.com/c/en/us/td/docs/ios-xml/ios/prog/configuration/1611/b_1611_programmability_cg/restco)

**NEW QUESTION 175**

- (Exam Topic 1)

Which line is an example of the start of a chunk from a unified diff?

- A. @@ -90,88 +20191008T1349@@
- B. @@ -20191007T1200 +88,90 @@
- C. @@ -20191007T1200 +20191008T1349@@
- D. @@ -88,10 +88,6 @@

**Answer:** D

**Explanation:**

Reference:

<https://unix.stackexchange.com/questions/252927/what-do-the-numbers-in-the-line-mean-in-output-of-diff>

**NEW QUESTION 180**

- (Exam Topic 1)

Refer to the exhibit.

```
---
- hosts: CISCO_ROUTER_01
  gather_facts: true
  connection: network_cli

  tasks:
    - name: show conf
      ios_command:
        commands:
          - show conf
      register: config

    - name: save output to /etc/ansible/configs
      copy:
        content: "[[ config.stdout[0] ]]"
        dest: "/etc/ansible/configs/show_conf_{{ inventory_hostname }}.txt"
```

What is the result of executing this Ansible playbook?

- A. The playbook copies a new start-up configuration to CISCO\_ROUTER\_01.
- B. The playbook backs up the running configuration of CISCO\_ROUTER\_01.
- C. The playbook backs up the start-up configuration of C1SCO\_ROUTER\_01.
- D. The playbook copies a new running configuration to CISCO\_ROUTER\_01.

**Answer:** C

#### NEW QUESTION 181

- (Exam Topic 1)

A company has written a script that creates a log bundle from the Cisco DNA Center every day. The script runs without error and the bundles are produced. However, when the script is run during business hours, report poor voice quality of phones calls. What explains this behavior?

- A. The application is running in the Voice VLAN and causes delays and jitter in the subnet.
- B. The speed and duplex settings in Cisco DNA Center are sot incorrectly, which causes the transfer to be too slow.
- C. 9 The script is written in a low-level programming language where there is no memory safet
- D. This causes a buffer overflow and disruption on the network.
- E. Generating the logs causes the CPU on the network controller to spike, which causes delays m forwarding the voice IP packets.

**Answer:** D

#### NEW QUESTION 182

- (Exam Topic 3)

A file in a local Git repository has been updated and issued the git add . command. The git diff command has been run to compare the changes to the previous commit, but nothing shows. Which action identifies the problem?

- A. Run the git add . command again in the correct subdirectory to ensure changes added to the staging area.
- B. Run the git commit command before the differences are compared to receive the end state of the code.
- C. Run the git status command to see the differences between current and previous code review stages.
- D. Run the git diff --staged command to compare the code added to the staging area.

**Answer:** D

#### NEW QUESTION 184

- (Exam Topic 3)

Which technology is responsible for resolving a host name to an IP address?

- A. DNS
- B. SNMP
- C. DHCP
- D. NTP

**Answer:** A

#### NEW QUESTION 187

- (Exam Topic 3)

Drag and drop the capabilities from the left onto the Cisco Network Management Platforms that support the capabilities on the right.

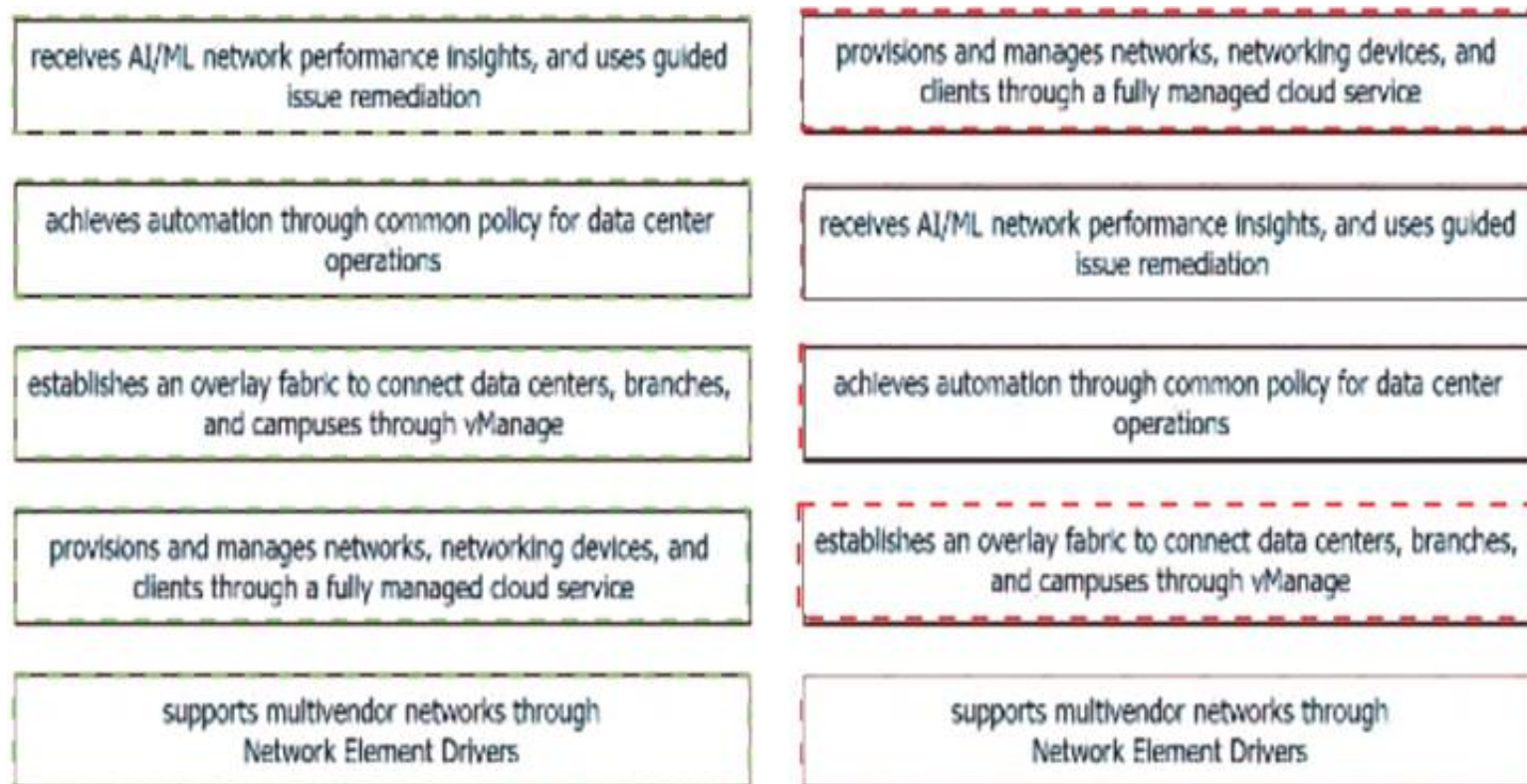
receives AI/ML network performance insights, and uses guided issue remediation	Meraki
achieves automation through common policy for data center operations	Cisco DNA Center
establishes an overlay fabric to connect data centers, branches, and campuses through vManage	ACI
provisions and manages networks, networking devices, and clients through a fully managed cloud service	Cisco SD-WAN
supports multivendor networks through Network Element Drivers	NSO

- A. Mastered
- B. Not Mastered

**Answer:** A

**Explanation:**





#### NEW QUESTION 191

- (Exam Topic 3)

A team of developers is responsible for a network orchestration application in the company. The responsibilities also include: developing and improving the application in a continuous manner deployment of the application and management of CI/CD frameworks monitoring the usage and problems and managing the performance improvements Which principle best describes this DevOps practice?

- A. responsible for IT operations
- B. automation of processes
- C. end-to-end responsibility
- D. quality assurance checks

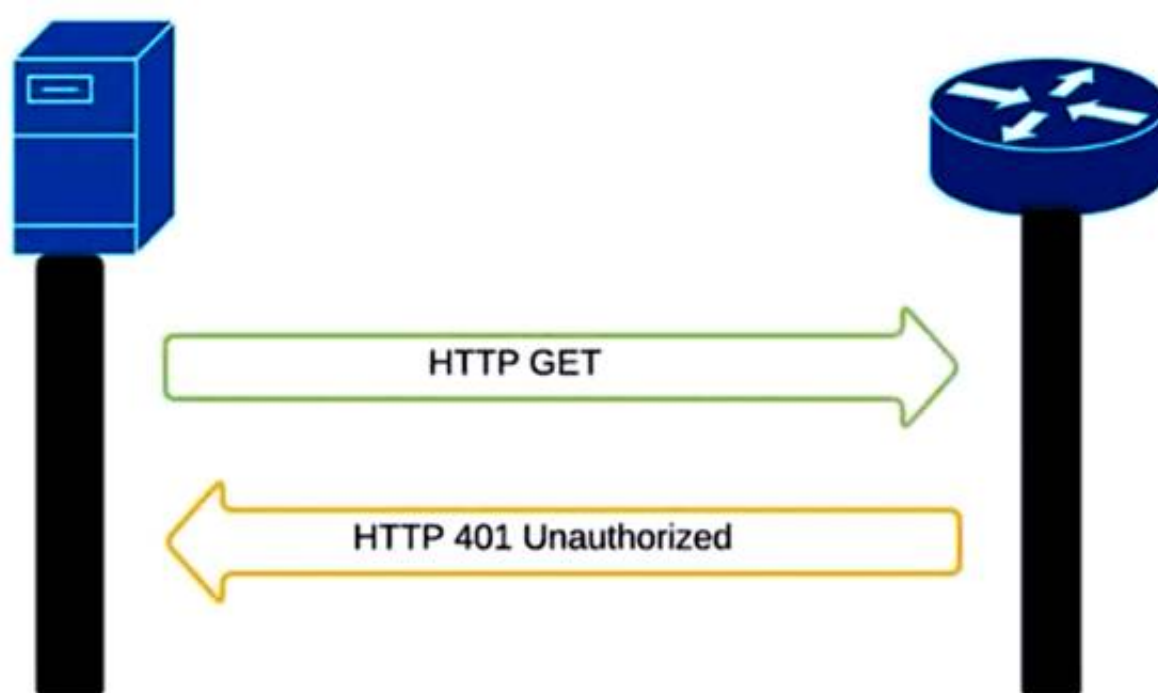
**Answer: C**

#### NEW QUESTION 196

- (Exam Topic 3)

Refer to the exhibit.

```
curl -i -k -X 'GET' 'https://172.18.110.64:443/restconf/data/Cisco-IOS-XE-native:native/hostname'
-H 'Accept: application/yang-data+json' \
-u 'cisco:cisco'
```



An administrator attempts to perform a GET operation by using the Cisco IOS XE RESTCONF API to return the hostname of a device. The sequence diagram in the exhibit illustrates the HTTP messages observed. Which change to the API request resolves the issue?

- A. Remove the -H 'Accept: application/yang-data+json' header.
- B. Replace -u cisco:cisco parameter with -u 'cisco:cisco'.
- C. Change the request method from -X 'GET' to -X 'POST'.
- D. Add the -H 'Content-Type: application/yang-data+json' header.

**Answer: B**

#### NEW QUESTION 201

- (Exam Topic 3)

What is a procedural component of CI/CD pipelines?

- A. Bundled artifacts must be generated.
- B. Every test must pass for the pipeline to continue its execution.
- C. Some tests fail without stopping the pipeline execution.
- D. The release label that identifies the build is optional.

**Answer:** B

#### Explanation:

In a CI/CD (Continuous Integration/Continuous Deployment) pipeline, a procedural component is a specific step or action that is carried out in a specific order as part of the pipeline process. One of the procedural components of a CI/CD pipeline is that every test must pass in order for the pipeline to continue its execution. If any test fails, the pipeline will stop and the issue must be addressed before the pipeline can continue. This is an important procedural component of a CI/CD pipeline because it ensures that the code being deployed is of high quality and meets the necessary standards before it is released.

#### NEW QUESTION 202

- (Exam Topic 3)

A developer is attempting to retrieve all the messages from a Cisco Webex space. The server responds by sending the first 1,000 messages. The developer must make additional requests to retrieve the rest of the messages. Which API constraint is described in this scenario?

- A. payload limiting
- B. throttling
- C. pagination
- D. rate limiting

**Answer:** C

#### Explanation:

<https://developer.atlassian.com/server/confluence/pagination-in-the-rest-api/>

#### NEW QUESTION 206

- (Exam Topic 3)

Which OWASP threat takes advantage of a web application that the user has already authenticated to execute an attack?

- A. phishing
- B. DoS
- C. brute force attack
- D. CSRF

**Answer:** D

#### Explanation:

Cross-Site Request Forgery (CSRF) is an attack that forces an end user to execute unwanted actions on a web application in which they're currently authenticated.

<https://owasp.org/www-community/attacks/csrf>

#### NEW QUESTION 207

- (Exam Topic 3)

A developer attempts to refactor and improve the application code. It is noticed that the code contains several pieces of key information that could be a security threat if this code is accessible by those who are not authorized to this data. Which approach addresses the security concerns noticed by the developer?

- A. Host the application code on a machine located in a secure data center.
- B. Utilize environment variables for username and password details.
- C. Rely on the security teams' goodwill to not give access to those who do not need it.
- D. Move the hardware that the application is deployed on to a secure location.

**Answer:** B

#### NEW QUESTION 211

- (Exam Topic 3)

Which platform has an API that has the capability to obtain a list of vulnerable software on user devices?

- A. Cisco Advanced Malware Protection
- B. Cisco Umbrella
- C. Cisco Identity Services Engine
- D. Cisco Firepower

**Answer:** A

#### NEW QUESTION 214

- (Exam Topic 3)

A development team is creating an application used for contactless payments. The application must: Be web-based Capture and process the credit card information for a purchase.

Which security action must the web application use to gather and process the private customer data?

- A. Enable RATs to monitor the web application remotely.
- B. Disable botnets to eliminate risks.
- C. Disable TLS to increase the connection speed.
- D. Enable the encryption of network traffic.

Answer: D

#### NEW QUESTION 217

- (Exam Topic 3)

## Object Lookup

Use the `MoDirectory.lookupByDn` to look up an object within the MIT object tree by its distinguished name (DN). This example looks for an object called 'uni':

```
uniMo = moDir.lookupByDn('uni')
```

A successful lookup operation returns a reference to the object that has the specified DN.

You can also look up an object by class. This example returns a list of all objects of the class 'polUni':

```
uniMo = moDir.lookupByClass('polUni')
```

You can add a filter to a lookup to find specific objects. This example returns an object of class 'fvTenant' whose name is 'Tenant1':

```
tenant1Mo = moDir.lookupByClass("fvTenant", propFilter='and(eq(fvTenant.name, "Tenant1"))')
```

Refer to the exhibit. Drag and drop the code from the bottom onto the box where the code is missing to add a subnet to each bridge domain in the Ten1 tenant. Not all options are used.

```
from cobra.model import fv
from cobra.mit.request import ClassQuery, DnQuery
import cobra.mit.access
import cobra.mit.session

tenname = "Ten1"
ls = cobra.mit.session.LoginSession(
    'https://10.100.1.200', "admin", "Lab123!3")

aci = cobra.mit.access.MoDirectory(ls)
aci.login()
c = cobra.mit.request.ConfigRequest()

qry1 =  (f'uni/tn-{tenname}')
fvTenant = aci.query(qry1)[0]

qry2 =  ("fvBD")
qry2.propFilter = f'and(wcard(fvBD.dn,"{fvTenant.dn}"))'
fvBDs = aci.query(qry2)

i=0
for fvBD in fvBDs:
    fvsubnet = cobra.model.fv.Subnet(  , ip=f'10.114.{i}.1/24')
    c.addMo(fvBD)
    aci.  (c)
    i+=
```

fvBD

fvTenant

ClassQuery

bdname

DnQuery

ClassName

commit

- A. Mastered
- B. Not Mastered

Answer: A

Explanation:



```
from cobra.model import fv
from cobra.mit.request import ClassQuery, DnQuery
import cobra.mit.access
import cobra.mit.session

tenname = "Ten1"
ls = cobra.mit.session.LoginSession(
    'https://10.100.1.200', "admin", "Lab123!3")

aci = cobra.mit.access.MoDirectory(ls)
aci.login()
c = cobra.mit.request.ConfigRequest()

qry1 = DnQuery (f'uni/tn-{tenname}')
fvTenant = aci.query(qry1)[0]

qry2 = ClassQuery ("fvBD")
qry2.propFilter = f'and(wcard(fvBD.dn,"{fvTenant.dn}"))'
fvBDs = aci.query(qry2)

i=0
for fvBD in fvBDs:
    fvsubnet = cobra.model.fv.Subnet( fvBD , ip=f'10.114.{i}.1/24')
    c.addMo(fvBD)
    aci.commit (c)
    i+=1
```

fvBD

fvTenant

ClassQuery

bdname

DnQuery

ClassName

commit

#### NEW QUESTION 222

- (Exam Topic 3)

What is a benefit of a distributed version control system?

- A. encourages users to commit small places of work to the system more frequently
- B. ensures that all code meets minimum standards before being committed to the system
- C. allows users to work on the codebase even when not connected to the Internet
- D. ensures that all code is tested before being committed to the system

**Answer: C**

#### Explanation:

Reference: <https://about.gitlab.com/topics/version-control/benefits-distributed-version-control-system/>

#### NEW QUESTION 226

- (Exam Topic 2)

Which configuration management tool has an agentless capability?

- A. Chef
- B. Puppet
- C. Ansible
- D. CFEngine

**Answer: C**

#### NEW QUESTION 231

- (Exam Topic 2)

What is a capability of an agentless configuration management system?

- A. It requires managed hosts to have an interpreter for a high-level language such as Python or Ruby.
- B. It requires managed hosts to connect to a centralized host to receive updated configurations.
- C. It uses compiled languages as the basis of the domain-specific language to interface with managed hosts.
- D. It uses existing protocols to interface with the managed host.

**Answer: D**

#### NEW QUESTION 232

- (Exam Topic 3)

Developer is working on a new feature and made changes on a branch named 'branch-413667549a-new'. When merging the branch to production, conflicts occurred. Which Git command must the developer use to recreate the pre-merge state?

- A. git merge -no-edit
- B. git merge -commit
- C. git merge -revert
- D. git merge -abort

**Answer: D**

**Explanation:**

<https://www.git-tower.com/learn/git/ebook/en/command-line/advanced-topics/merge-conflicts>

**NEW QUESTION 233**

- (Exam Topic 3)

A developer pushes an application to production. The application receives a webhook over HTTPS without a secret. The webhook information contains credentials to service in cleartext. When the information is received, it is stored in the database with an SHA-256 hash. Credentials to the database are accessed at runtime through the use of a vault service. While troubleshooting, the developer sets the logging to debug to view the message from the webhook. What is the security issue in this scenario?

- A. Database credentials should be accessed by using environment variables defined at runtime.
- B. During the transport of webhook messages, the credentials could be unencrypted and leaked.
- C. During logging, debugging should be disabled for the webhook message.
- D. Hashing the credentials in the database is not secure enough; the credentials should be encrypted.

**Answer:** B

**NEW QUESTION 238**

- (Exam Topic 3)

Which Cisco platform is used to manage data center infrastructure through third-party tools and system integrations?

- A. Cisco DNA Center
- B. Cisco UCS Manager
- C. Cisco Intersight
- D. Cisco UCS Director

**Answer:** D

**NEW QUESTION 241**

- (Exam Topic 3)

Which function does a router provide to a network?

- A. broadcast domain segmentation
- B. unique host on a Layer 3 network
- C. unique hardware address for every node on a LAN
- D. broadcast domain extension

**Answer:** B

**NEW QUESTION 245**

- (Exam Topic 3)

A developer completed the creation of a script using Git. Before delivering it to the customer, the developer wants to be sure about all untracked files, without losing any information. Which command gathers this information?

- A. `git clean -n`
- B. `git rm -f`
- C. `git clean -r`
- D. `git rm *`

**Answer:** A

**NEW QUESTION 247**

- (Exam Topic 3)

A developer is working on a new feature in a branch named 'newfeat123456789' and the current working primary branch is named 'prim987654321'. The developer requires a merge commit during a fast forward merge for record-keeping purposes. Which Git command must be used?

- A. `git merge --no-ff newfeat123456789`
- B. `git commit --no-ff newfeat123456789`
- C. `git add --commit-ff newfeat123456789`
- D. `git reset --commit-ff newfeat123456789`

**Answer:** A

**NEW QUESTION 250**

- (Exam Topic 3)

Which Python function is used to parse a string that contains JSON data into a Python dictionary?

- A. `json.dumps()`
- B. `json.to_json()`
- C. `json.parse()`
- D. `json.loads()`

**Answer:** D

**Explanation:**

loads() function is present in python built-in 'json' module. This function is used to parse the JSON string.

NEW QUESTION 254

- (Exam Topic 3)

Drag and drop the steps from the left into order on the right to create a common CI/CD pipeline process. Not all options are used.

Build

Commit

Deploy

Evaluate

Test

Regress

step 1

step 2

step 3

step 4

- A. Mastered
- B. Not Mastered

Answer: A

Explanation:

Build

Commit

Commit

Build

Deploy

Test

Evaluate

Deploy

Test

Regress

NEW QUESTION 255

- (Exam Topic 3)

```
1 import requests
2 from requests.auth import HTTPBasicAuth
3 BASE_URL = 'https://<IP ADDRESS or FQDN>'
4 AUTH_URL = '/dna/system/api/v1/auth/token'
5 TOKEN = '<TOKEN>'
6
7 headers = {'X-Auth-Token': TOKEN, 'Content-Type': 'application/json'}
8
9 DEVICES_COUNT_URL = '/dna/intent/api/v1/network-device/count'
10 DEVICES_URL = '/dna/intent/api/v1/network-device'
11 DEVICES_BY_ID_URL = '/dna/intent/api/v1/network-device/'
12
13 def devices_func(headers):
14     response = requests.get(BASE_URL + DEVICES_COUNT_URL,
15                             headers = headers, verify=False)
16     return response.json()['response']
17
18 def devices_test(headers, query_string_params):
19     response = requests.get(BASE_URL + DEVICES_URL, headers = headers,
20                             params = query_string_params, verify=False)
21     return response.json()['response']
22
23 def devices_info(headers, device_id):
24     response = requests.get(BASE_URL + DEVICES_BY_ID_URL + device_id,
25                             headers = headers, verify=False)
26     return response.json()['response']
27
28 print(devices_func(headers))
29 print(devices_test(headers, {}))
30 print(devices_test(headers, {'hostname': 'CSR1Kv-01.devnet.local'}))
31 response = devices_test(headers, {'platformId': 'C9500-40X'})
32 print(devices_info(headers, response[0]['id']))
```

Refer to the exhibit. An engineer prepares a script to automate workflow by using Cisco DNA Center APIs to display:

total count of devices

list of the network devices

information of one device with a hostname filter

What is displayed in the final step after the Python script is executed?

- A. information about a device of type C9500-40x.
- B. filtered results by the hostname and the platformId C9500-40X
- C. information about the test devices
- D. list of devices with platformId C9500-40x

**Answer: B**

#### NEW QUESTION 258

- (Exam Topic 3)

How are operations on REST APIs performed as compared to RPC APIs?

- A. In a REST API, operations are performed on an object (node) that is identified by a URL, but RPC APIs are operation-oriented.
- B. In a REST API, operations are performed on an external resource that is defined on the API, but the RCP APIs are resource-oriented.
- C. In a REST API, operations are performed on a platform that is identified by the URL, but RPC APIs are platform-oriented.
- D. In a REST API, operations are performed on an internal resource that is defined on the API, but RPC APIs are resource-oriented.

**Answer: D**

#### Explanation:

In a REST API, operations are performed on resources, which are accessed and manipulated using HTTP verbs such as GET, POST, PUT, and DELETE. These resources are identified by a URL and are defined within the API. For example, an API may define a resource called "customers", which can be accessed using the URL "http://api.example.com/customers". To retrieve a list of customers, the client could make a GET request to this URL. To create a new customer, the client could make a POST request to the same URL with the necessary data in the request body. In contrast, in an RPC API, operations are performed by making function calls. The client makes a request to the server, specifying the function to be called and any necessary parameters. The server then executes the function and returns the result to the client. RPC APIs are operation-oriented, meaning that the focus is on the function being called rather than the resource being accessed.

#### NEW QUESTION 263

- (Exam Topic 3)

A developer plans to deploy a new application that will use an API to implement automated data collection from Webex with these requirements:

The application was created by using the request library. Requires HTTP basic authentication.

Provides data in JSON or XML formats.

Which Cisco DevNet resource helps the developer with how to use the API?

- A. DevNet sandbox
- B. API documentation
- C. forums
- D. DevNet code exchange

**Answer: B**

#### NEW QUESTION 265

- (Exam Topic 3)

Which traffic is handled on the control plane?

- A. BGP
- B. SMB
- C. NTP
- D. NETCONF

**Answer:** A

#### NEW QUESTION 267

- (Exam Topic 3)

A developer creates an application that must provide an encrypted connection or API keys. The keys will be used to communicate with a REST API. Which command must be used for the secure connection?

- A. curl-X PUSH 'http://username.app.com/endpoint/?api\_key=12345abcdef'
- B. curl -v 'ftp://username.app.com/endpoint/?api\_key=12345abcdef'
- C. curl -X GET 'https://username.app.com/endpoint/?api\_key=12345abcdef'
- D. curl-X GET 'http://username.app.com/endpoint/?api\_key=12345abcdef'

**Answer:** C

#### NEW QUESTION 269

- (Exam Topic 3)

What is the purpose of grouping devices in a VLAN?

- A. Devices communicate as if they are connected on the same wire.
- B. Multicast network traffic is limited to the VLAN connected devices.
- C. Unicast messages are limited to the clients connected on the same VLAN.
- D. Network traffic is load balanced between the devices connected to the VLAN.

**Answer:** B

#### NEW QUESTION 272

.....

## Relate Links

**100% Pass Your 200-901 Exam with ExamBible Prep Materials**

<https://www.exambible.com/200-901-exam/>

## Contact us

We are proud of our high-quality customer service, which serves you around the clock 24/7.

Viste - <https://www.exambible.com/>