

# Juniper

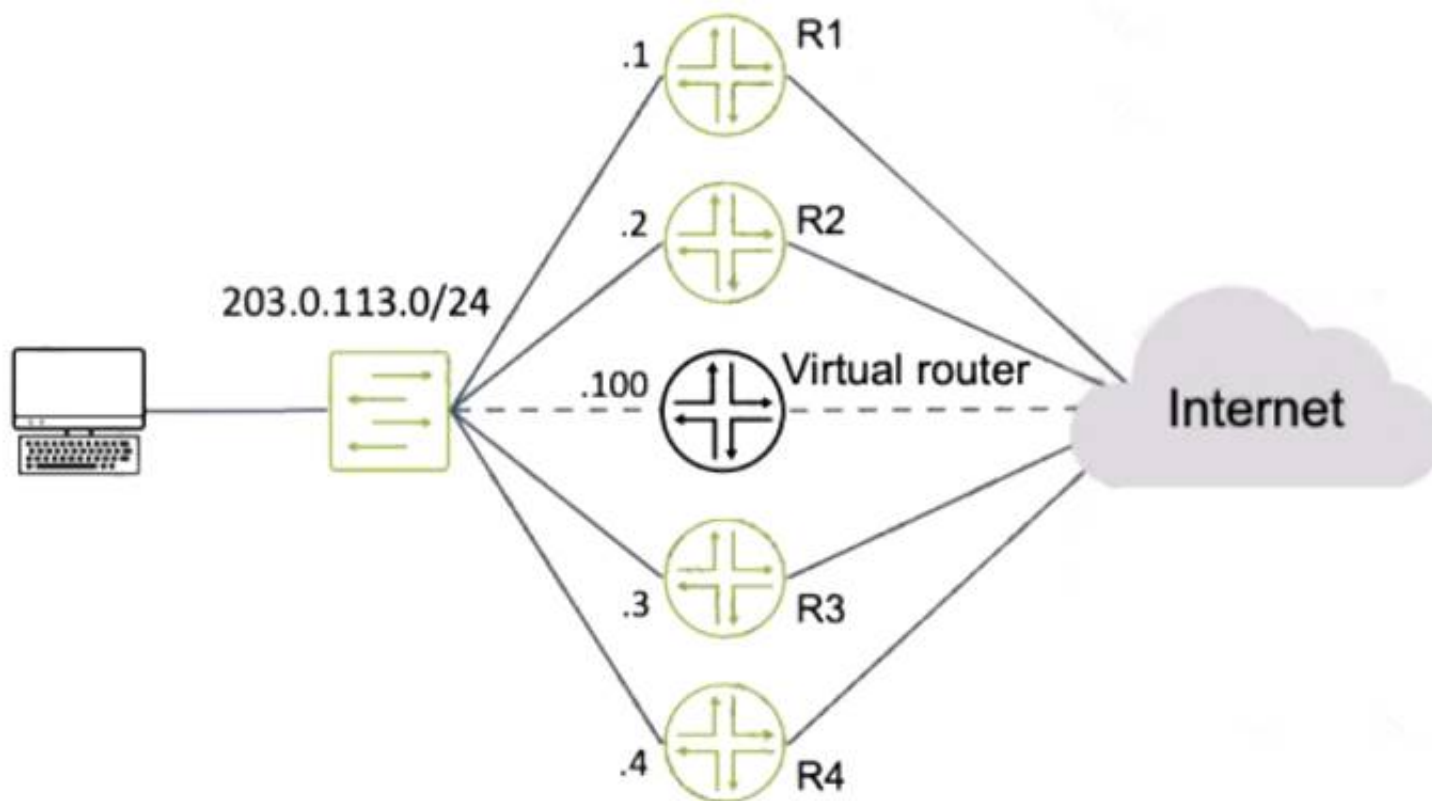
## Exam Questions JN0-363

Service Provider Routing and Switching Specialist (JNCIS-SP)



### NEW QUESTION 1

Exhibit



Routers R1 and R4 have a VRRP priority of 90, while R2 and R3 have default VRRP priorities. Referring to the exhibit, which router will be elected as the primary VRRP router?

- A. R3
- B. R4
- C. R2
- D. R1

**Answer: D**

### NEW QUESTION 2

What are two types of SIDs used in segment routing? (Choose two.)

- A. node
- B. adjacency
- C. link
- D. interface

**Answer: AB**

### NEW QUESTION 3

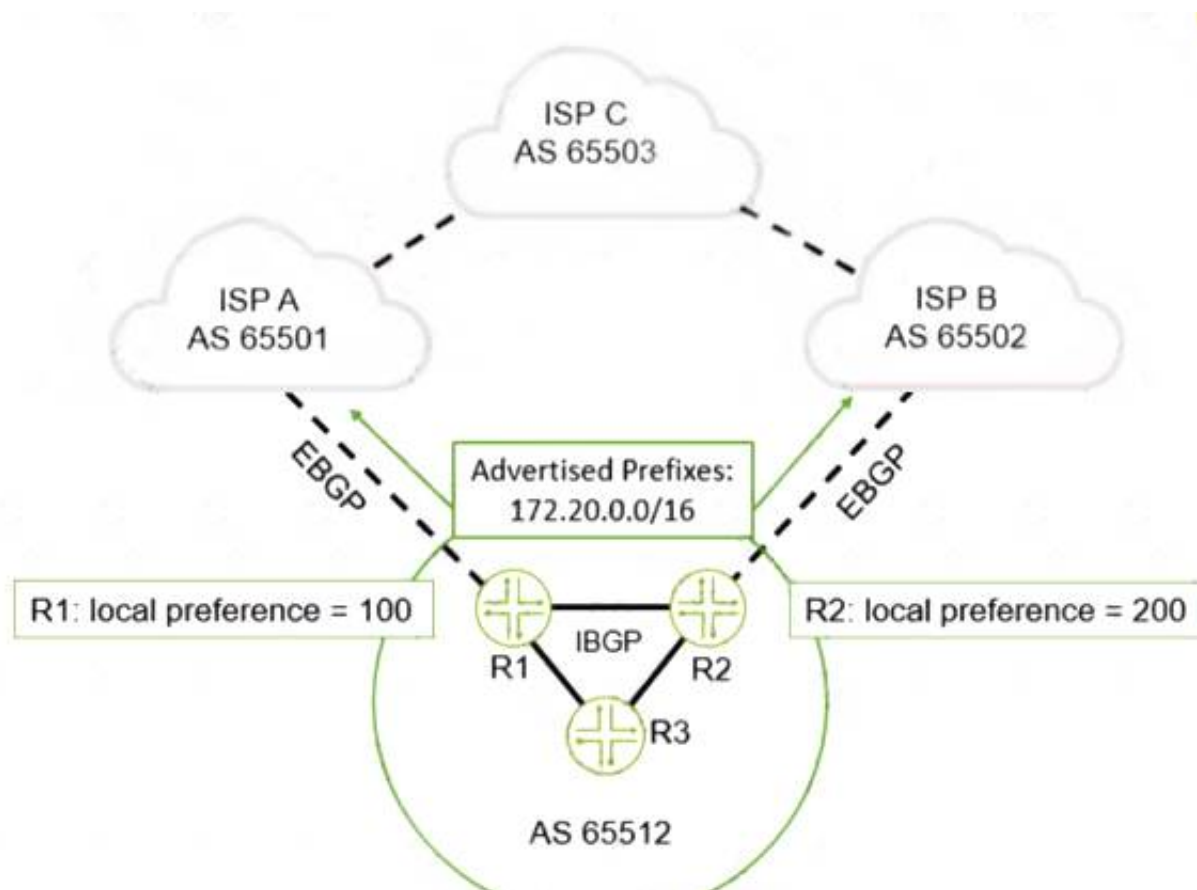
How does a Junos device learn about MAC addresses when it is first connected to an Ethernet LAN?

- A. The device sends out a network broadcast message asking for all devices and MAC addresses on the network and stores this information in addition to the interface from which the response was received.
- B. The device learns the destination MAC addresses from traffic in the network and stores this MAC address in addition to the interface from which the traffic was received.
- C. The device learns the source MAC addresses from traffic in the network and stores this MAC address in addition to the interface from which the traffic was received.
- D. The device sends out a network multicast message asking for all devices and MAC addresses on the network and stores this information in addition to the interface from which the response was received.

**Answer: D**

### NEW QUESTION 4

Exhibit



You are advertising a summary route that represents your local network (172.20.0.0/16) to both ISP A and ISP B. You want to influence all traffic sent to you from ISP C to go through R2.

How would you accomplish this task?

- A. On R1, prepend your AS number three times on the 172.20.0.0/16 route when advertising it to ISP 1.
- B. On R1, change the local preference value to 250.
- C. On R2, prepend your AS number three times on the 172.20.0.0/16 route when advertising it to ISP 2.
- D. On R2, change the local preference value to 50.

**Answer: B**

#### NEW QUESTION 5

What is a key differentiator of generate routes from aggregate routes?

- A. Generate routes use a forwarding next hop.
- B. Generate routes have a default next-hop value of reject.
- C. Generate routes have a default preference value of 210.
- D. Generate routes cannot be used as a gateway of last resort.

**Answer: C**

#### NEW QUESTION 6

Exhibit

```
user@R2> show ospf interface extensive
Interface State Area DR ID BDR ID Nbrs
ge-0/0/3.0 DR 0.0.0.1 192.168.1.2 192.168.1.1 1 Type: LAN, Address: 172.26.1.2, Mask:
255.255.255.252, MTU: 1500, Cost: 1
DR addr: 172.26.1.2, BDR addr: 172.26.1.1, Priority: 128, Adj count: 1
Hello: 10, Dead: 40, ReXmit: 5, Not Stub
Auth type: None Topology default (ID 0) -> Cost: 0
ge-0/0/1.0 BDR 0.0.0.0 192.168.1.3 192.168.1.2 1
Type: LAN, Address: 172.26.2.1, Mask: 255.255.255.252, MTU: 1500, Cost: 1
DR addr: 172.26.2.2, BDR addr: 172.26.2.1, Priority: 128, Adj count: 1 Hello: 10,
Dead: 40, ReXmit: 5, Not Stub
Auth type: None
Topology default (ID 0) -> Cost: 0
```

Referring to the exhibit, which two statements are correct? (Choose two.)

- A. The OSPF Interfaces are configured as point-to-point.
- B. The ge-0/0/1.0 Interface is configured as passive.
- C. The R2 device is an ABR.
- D. Junos OS default OSPF hello timers and dead intervals are used on all interfaces.

**Answer: BD**

#### NEW QUESTION 7

Which two statements are correct about the way that BGP propagates routes by default? (Choose two.)

- A. A route learned by EBGP will be re-advertised to IBGP peers.
- B. A route learned by IBGP will not be re-advertised to IBGP peers.
- C. A route learned by EBGP will not be re-advertised to IBGP peers.
- D. A route learned by IBGP will be re-advertised to IBGP peers.

Answer: CD

#### NEW QUESTION 8

Which two statements are correct when using LDP? (Choose two.)

- A. The Inet.3 table will contain only the paths explicitly defined.
- B. The inet.3 table will contain a full mesh of label-switched paths to other LDP-enabled routers.
- C. LDP label-switched paths are created by configuring LDP on at least one physical router interface.
- D. LDP label-switched paths are created by configuring LDP on the loopback Interface.

Answer: BC

#### NEW QUESTION 9

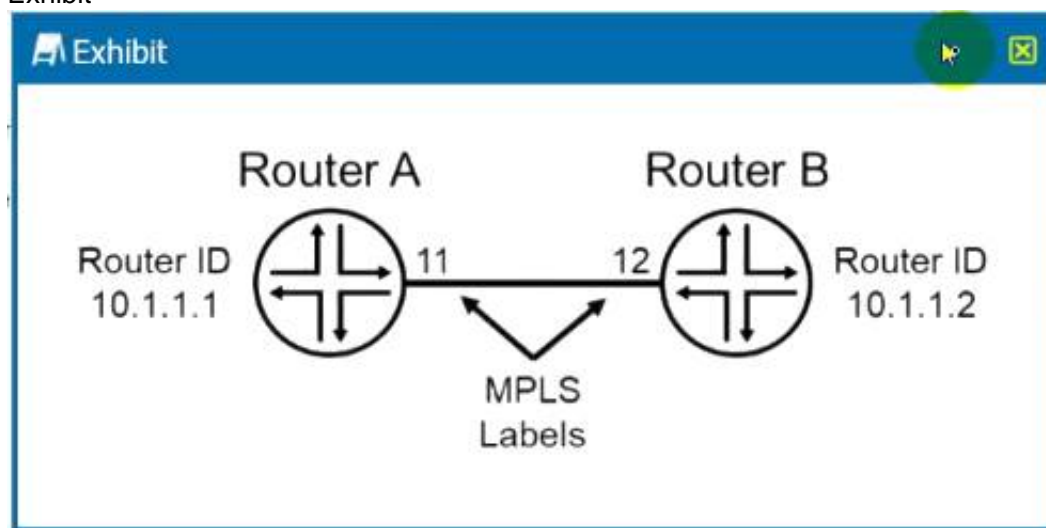
Which LSA type does an OSPF ABR use to advertise external routes generated by an NSSAASBR into the backbone?

- A. Type 5
- B. Type 7
- C. Type 3
- D. Type 1

Answer: C

#### NEW QUESTION 10

Exhibit



The routers shown in the exhibit are configured for segment routing.  
 In this scenario, what is the adjacency SIO that Router B advertises to Router A?

- A. 12
- B. 10.1.1.1
- C. 10.1.1.2
- D. 11

Answer: B

#### NEW QUESTION 10

Exhibit

```

user@R1> show bgp summary
Threading mode: BGP I/O
Default eBGP mode: advertise - accept, receive - accept
Groups: 1 Peers: 1 Down peers: 1
Table          Tot Paths  Act Paths Suppressed    History Damp State   Pending
inet.0
              0          0          0          0          0          0
Peer          AS      InPkt   OutPkt   OutQ   Flaps Last Up/Dwn
State|#Active/Received/Accepted/Damped...
192.168.200.2  64512      0        0        0        0      1:01 Active
user@R1> show configuration routing-options
autonomous-system 64512;
user@R1> show configuration protocols
bgp {
  group Internal {
    type internal;
    local-address 192.168.200.1;
    neighbor 192.168.200.2;
  }
}
    
```

Referring to the exhibit, internal BGP between R1 and R2 is not establishing. What is the problem In this scenario?

- A. R1 does not have a route to 192.168.200.2.
- B. R1 and R2 must each have unique AS numbers.
- C. R1 needs to be configured with an explicit router ID.
- D. R1 needs to be configured with a next-hop self policy.

**Answer: A**

#### NEW QUESTION 11

Exhibit

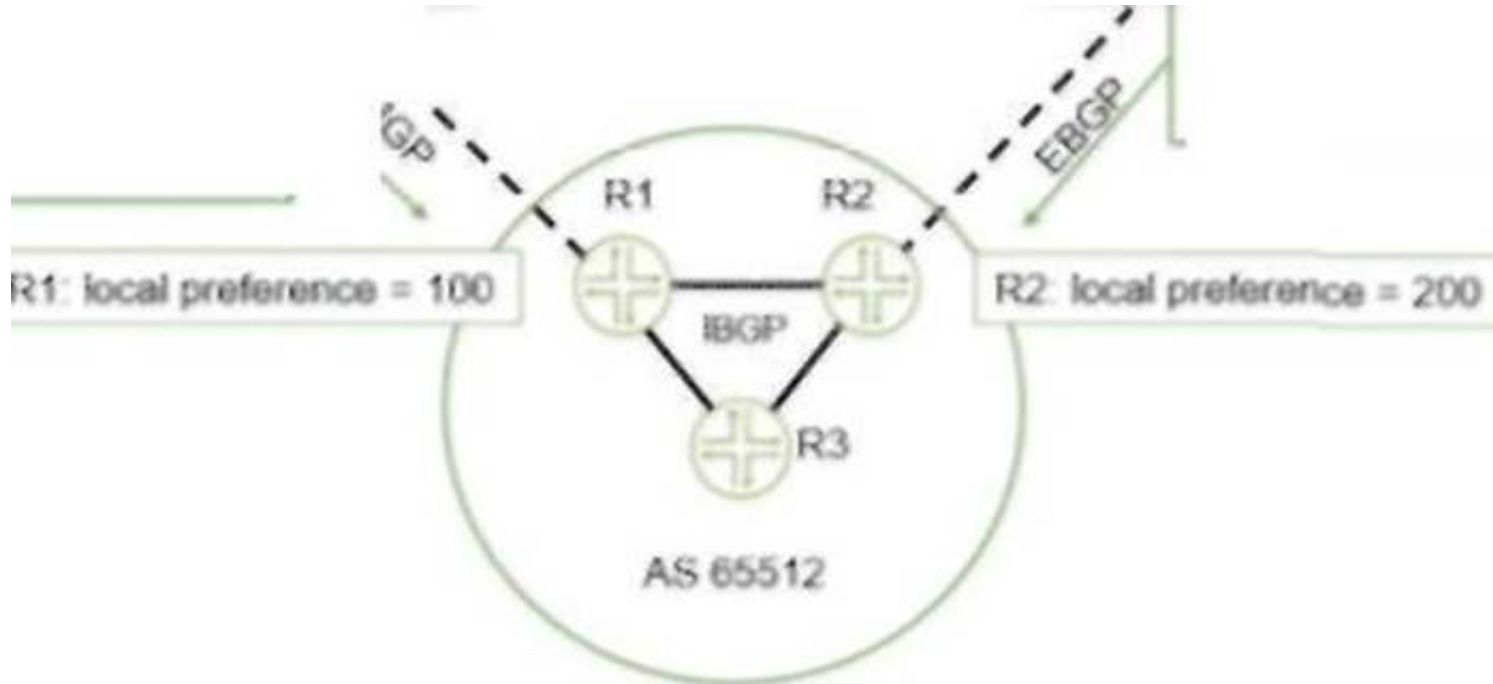
S Exhibit

LS11 A AS 65501 ISPB AS 65502

Advertised Prefixes: 172.20.0.0/24 172.20.20.0/24 172.20.21.0/24

\ N

Advertised Prefixes: 172.20.0.0/24 172.20.1.0/24



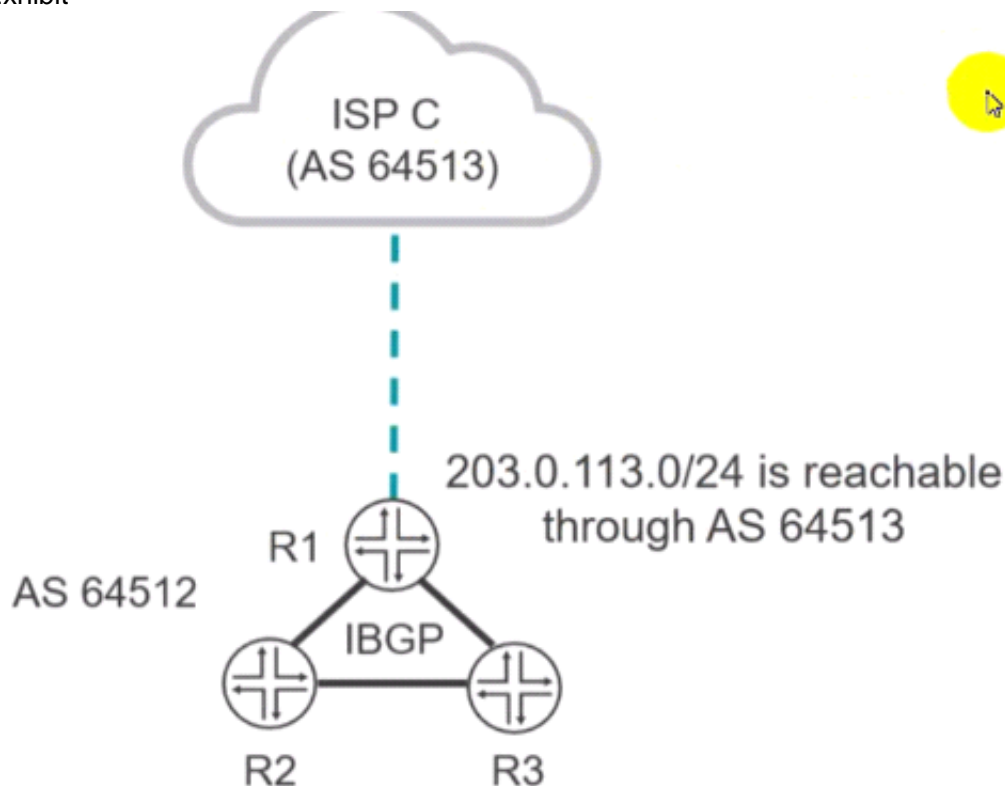
Referring to the exhibit, which two statements are correct? (Choose two.)

- A. Devices in AS 65512 will prefer ISP A for traffic destined to the 172.20.21.0/24 network.
- B. Devices In AS 65512 will prefer ISP A for traffic destined to the 172.20.0.0/24 network.
- C. Devices in AS 65512 will prefer ISP B for traffic destined to the 172.20.21.0/24 network.
- D. Devices In AS 65512 will prefer ISP B for traffic destined to the 172.20.0.0/24 network.

**Answer: C**

#### NEW QUESTION 14

Exhibit



You confirm that the R2 and R3 routers are receiving a BGP route to the 203.0.113.0/24 network, but both routers display the route as hidden. Referring to the exhibit, which two actions solve this problem? (Choose two.)

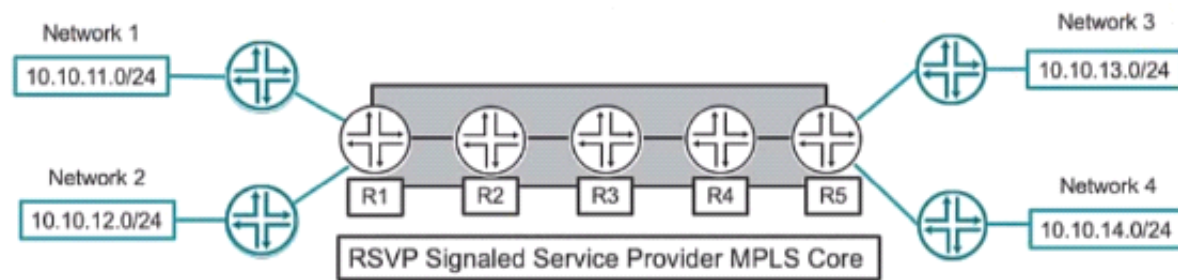
- A. Apply the routing policy on R1 as an export policy to the IBGP group.
- B. Apply the routing policy on R1 as an Import policy to the IBGP group.
- C. Configure a routing policy on R1 that sets the next hop for the 203.0.113.0/24 BGP route to the IP address that R1 uses for IBGP peering.
- D. Configure a routing policy on R1 that sets the next hop for the 203.0.113.0/24 BGP route to the IP address that R1 uses for EBGP peering.

**Answer: CD**

#### NEW QUESTION 18

Exhibit





Referring to the exhibit, what is the minimum number of LSPs required to support all four networks?

- A. 1
- B. 2
- C. 8
- D. 4

**Answer: C**

#### NEW QUESTION 21

Exhibit

```

[edit]
user@R1# show policy-options
policy-statement next-hop-self-policy {
  term alter-next-hop {
    then {
      next-hop self;
    }
  }
}
[edit]
user@R1# show protocols bgp
group int-64503 {
  type internal;
  local-address 192.168.100.1;
  neighbor 192.168.100.2;
}
group ext-64501 {
  type external;
  peer-AS 64501;
  neighbor 172.30.1.2;
}

```

Referring to the exhibit, where should next-hop-self-policy be applied to alter the next-hop value?

- A. The policy is applied as an export policy for the group int-64503.
- B. The policy is applied as an export policy for the group ext-64501.
- C. The policy is applied as an import policy for the group int- 64 503.
- D. The policy is applied as an Import policy for the group ext-64501.

**Answer: D**

#### NEW QUESTION 22

Exhibit

Exhibit
✕

```

root@R1> show configuration protocols isis
interface ge-0/0/0.0 {
}
interface ge-0/0/1.0 {
}
interface lo0.0;
level 1 disable;
level 2 wide-metrics-only;
reference-bandwidth 100g;
root@R1> show configuration interfaces ge-0/0/0
unit 0 {
    family inet {
        address 10.1.2.1/30;
    }
    family inet {
        address 10.1.2.1/30;
    }
    family inet6;
    family mpls;
}
root@R1> show isis adjacency
Interface          System      L State      Hold (secs) SNPA
ge-0/0/1.0         R6          2 Up         19

```

You configured interface ge-0/0/1.0 to run IS-IS. but this interface does not appear in the output of the show isis adjacency command as shown in the exhibit. What is the problem in this scenario?

- A. This is a Gigabit Ethernet interface, that is incompatible with the reference-bandwidth 100g statement.
- B. The family iso statement must be added to the logical interface.
- C. The router at the other end of the link is not sending any IS-IS Hello messages.
- D. The router at the other end of the link is a Level 1 only router.

**Answer: B**

#### NEW QUESTION 26

Which configuration setting prohibits a static route from being redistributed by a dynamic routing protocol?

- A. route-filter
- B. no-readvertise
- C. qualified-next-hop
- D. passive

**Answer: B**

#### NEW QUESTION 29

An OSPF router does not have a router ID configured.

In this scenario, which statement is correct about the router ID?

- A. The Junos OS will use the IP address assigned to the interface with the lowest MAC address.
- B. A router ID will not be assigned until it is manually configured.
- C. The Junos OS will use the IP address assigned to the loopback interface for the router ID.
- D. The Junos OS will use the IP address assigned to the Interface with the highest priority.

**Answer: B**

#### NEW QUESTION 34

You want to see a detailed list of all established BGP sessions. In this scenario, what would be a valid command to accomplish this task?

- A. show bgp neighbor
- B. show bgp summary
- C. show route receive-protocol bgp <neighbor IP address>
- D. show route protocol bgp

**Answer: D**

#### NEW QUESTION 38

Which two statements are correct about the community BGP attribute on a Junos device? (Choose two.)

- A. The community attribute is a mandatory BGP attribute.
- B. If the community attribute is present, it is ignored and deleted in the BGP updates.
- C. If the community attribute is present, it should be passed unchanged in the BGP updates.
- D. The community attribute is an optional BGP attribute.

Answer: AC

#### NEW QUESTION 39

Exhibit.

```

[edit routing-options]
user@router# show
aggregate {
  route 172.21.0.0/22;
}

[edit routing-options]
user@router# run show route protocol aggregate

inet.0: 21 destinations, 21 routes (20 active, 0 holddown, 1 hidden)

inet6.0: 10 destinations, 10 routes (10 active, 0 holddown, 0 hidden)

[edit routing-options]
user@router# run show route hidden

inet.0: 21 destinations, 21 routes (20 active, 0 holddown, 1 hidden)
+ = Active Route, - = Last Active, * = Both

172.21.0.0/22      [Aggregate] 00:12:09
                   Reject

inet6.0: 10 destinations, 10 routes (10 active, 0 holddown, 0 hidden)
  
```

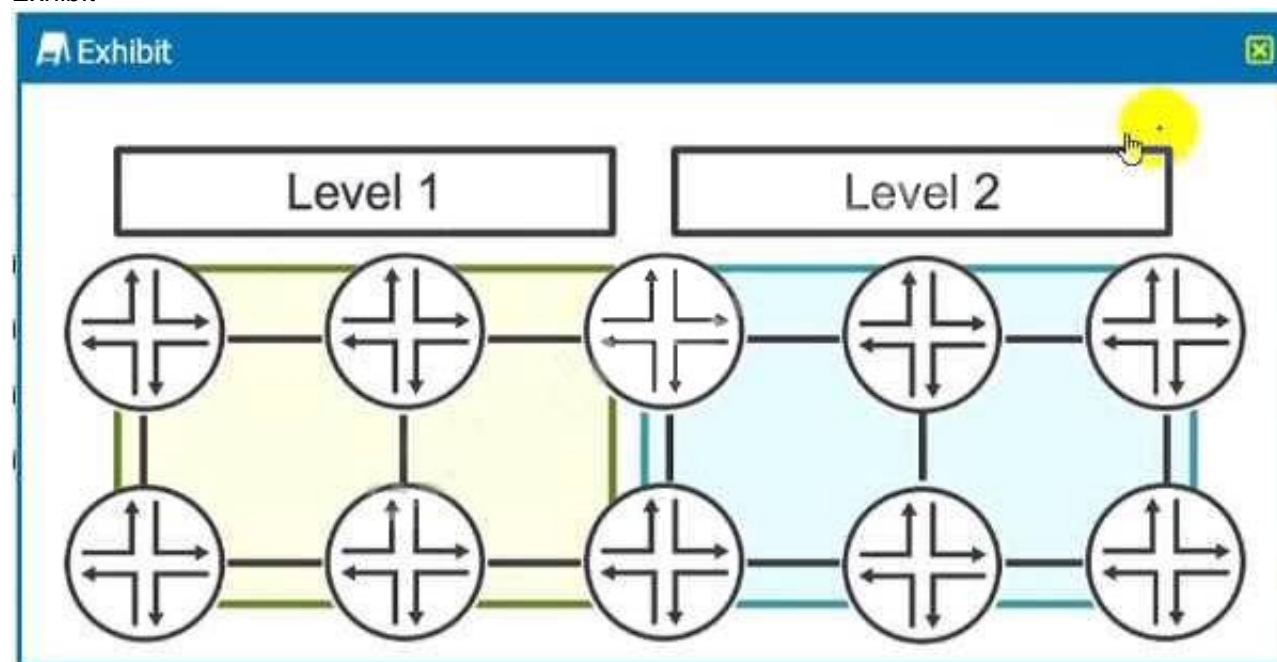
Referring to the exhibit, you have configured an aggregate route that represents the 172.21.0.0/24, 172.21.1.0/24, and 172.21.2.0/24 networks. However, when you view the routing table, your new route hidden. Which action would you perform to determine the problem?

- A. Verify that you have active contributing routes on the device.
- B. Verify that you have configured a policy on the device to accept aggregate routes.
- C. Verify that you have defined a metric value for the aggregate route.
- D. Verify that you have set the preference to a lower default value.

Answer: D

#### NEW QUESTION 40

Exhibit



Referring to the exhibit, which two statements are correct? (Choose two.)

- A. Prefixes in Level 1 will be redistributed to Level 2.
- B. Prefixes In Level 2 will be not redistributed to Level 1.
- C. Prefixes in Level 2 will be redistributed to Level 1.
- D. Prefixes in Level 1 will not be redistributed to Level 2.

Answer: C

#### NEW QUESTION 45

Which two statements are correct about IS-IS? (Choose two.)

- A. A level 1 only router can never form an adjacency with a level 2 only router.
- B. For level 2 adjacencies, the area IDs can be different.
- C. For level 2 adjacencies, the area IDs must be the same.

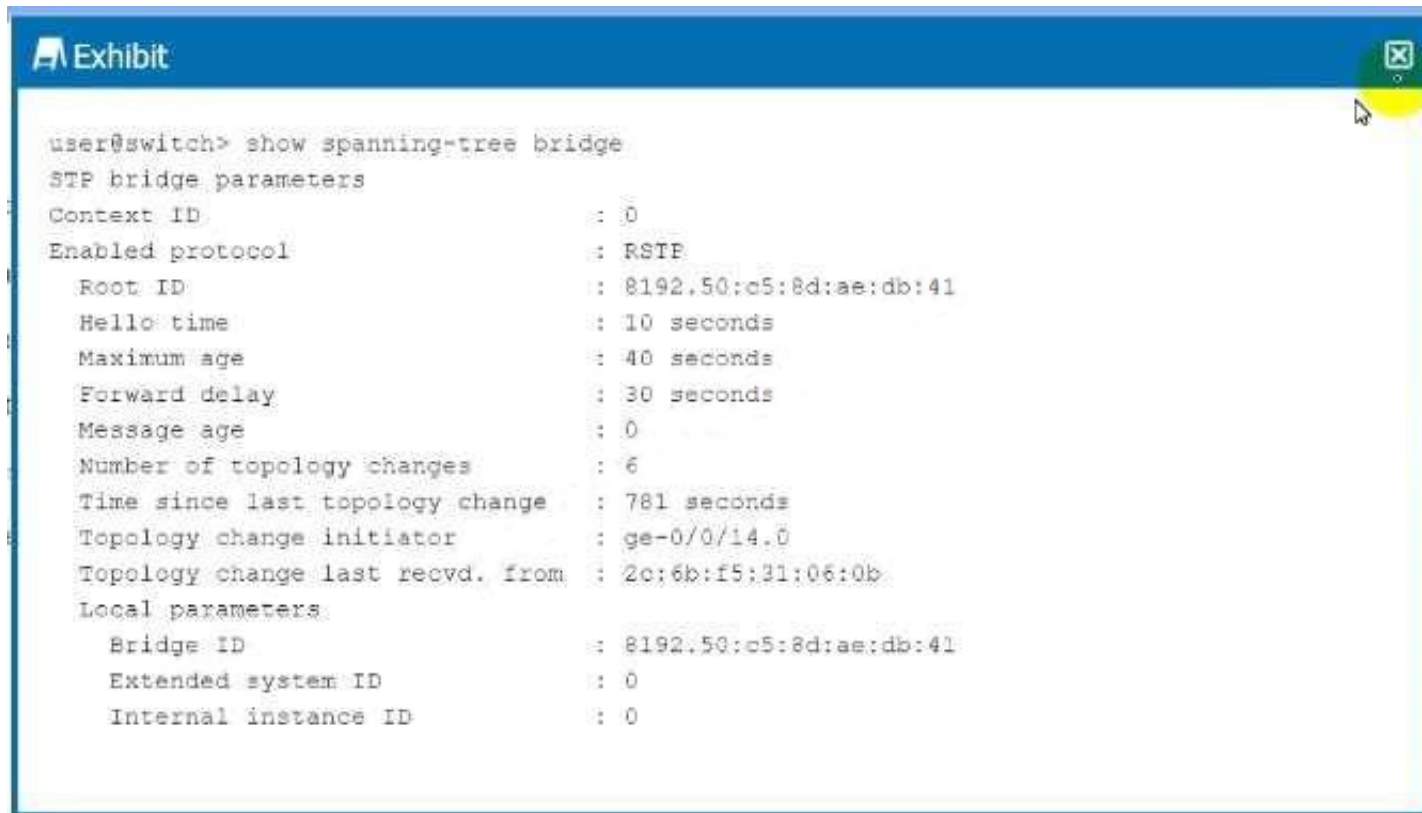


D. A level 1 only router can form an adjacency with a level 2 only router.

**Answer:** CD

#### NEW QUESTION 50

Exhibit



```

user@switch> show spanning-tree bridge
STP bridge parameters
Context ID                : 0
Enabled protocol          : RSTP
Root ID                   : 8192.50:c5:8d:ae:db:41
Hello time                 : 10 seconds
Maximum age                : 40 seconds
Forward delay              : 30 seconds
Message age                : 0
Number of topology changes : 6
Time since last topology change : 781 seconds
Topology change initiator  : ge-0/0/14.0
Topology change last recvd. from : 2c:6b:f5:31:06:0b
Local parameters
Bridge ID                  : 8192.50:c5:8d:ae:db:41
Extended system ID         : 0
Internal instance ID       : 0
  
```

Which two statements are correct about the information shown in the exhibit? (Choose two.)

- A. The root bridge is reachable using the ge-0/0/14 interface.
- B. This switch is the root bridge for this spanning tree topology.
- C. This switch has a bridge priority of 8k.
- D. The root bridge's priority is 4k.

**Answer:** BD

#### NEW QUESTION 52

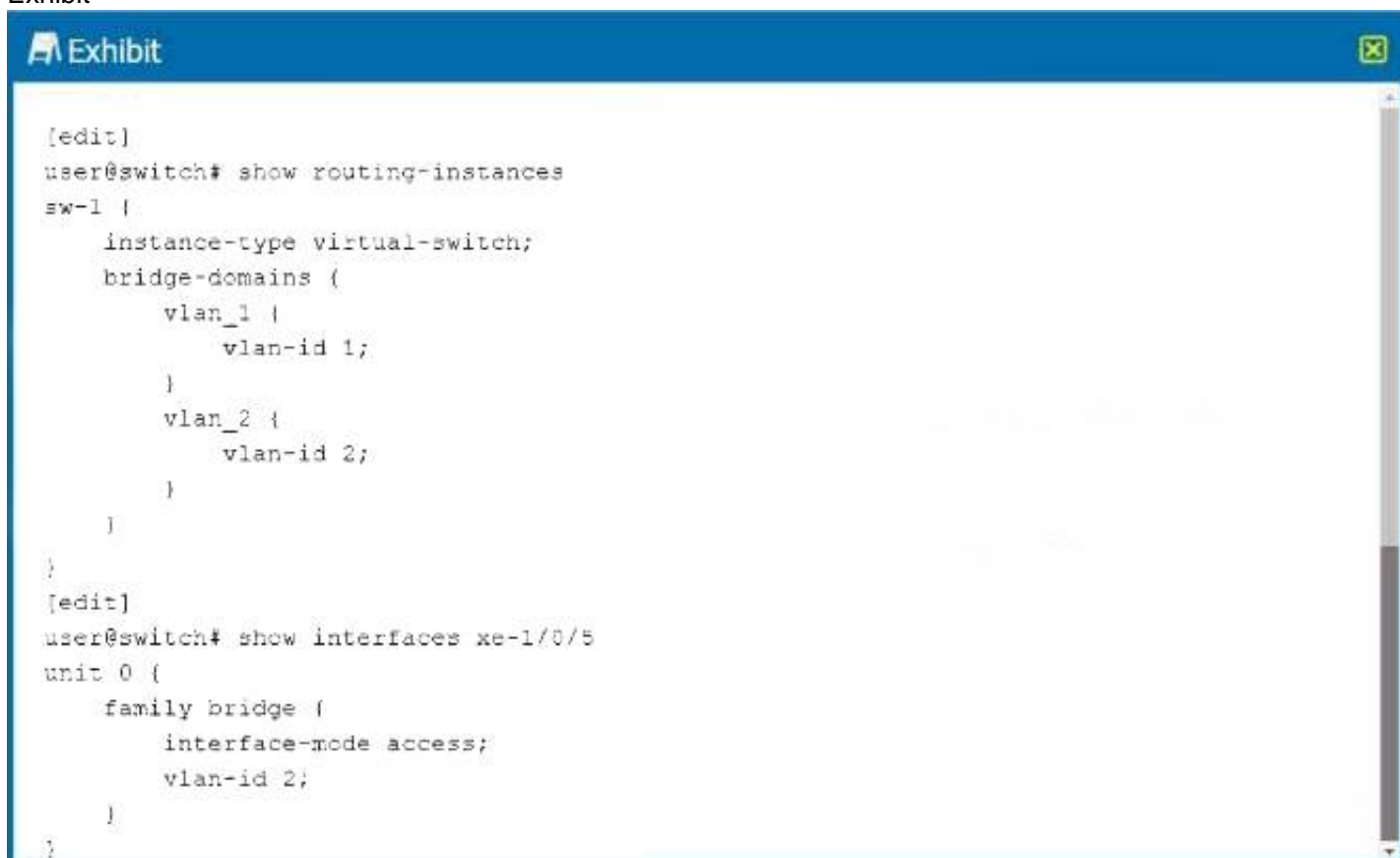
Which two interface types are used as tunnel endpoints? (Choose two.)

- A. ae
- B. ip
- C. ge
- D. gr

**Answer:** BC

#### NEW QUESTION 53

Exhibit



```

[edit]
user@switch# show routing-instances
sw-1 {
  instance-type virtual-switch;
  bridge-domains {
    vlan_1 {
      vlan-id 1;
    }
    vlan_2 {
      vlan-id 2;
    }
  }
}
[edit]
user@switch# show interfaces xe-1/0/5
unit 0 {
  family bridge {
    interface-mode access;
    vlan-id 2;
  }
}
  
```

You are asked to assign interface xe-1/0/5 to a virtual switch. What must be accomplished to complete the configuration?

- A. Interface xe-1/0/5 must be added to routing-instance sw-1 vlan\_2.
- B. Interface xe-1/0/5 must be a trunk port.

- C. Interface xe-1/0/5 must be added to routing-instance sw-1.
- D. An IRB interface must be configured to routing-instance sw-1 vlan\_2.

**Answer: C**

#### NEW QUESTION 56

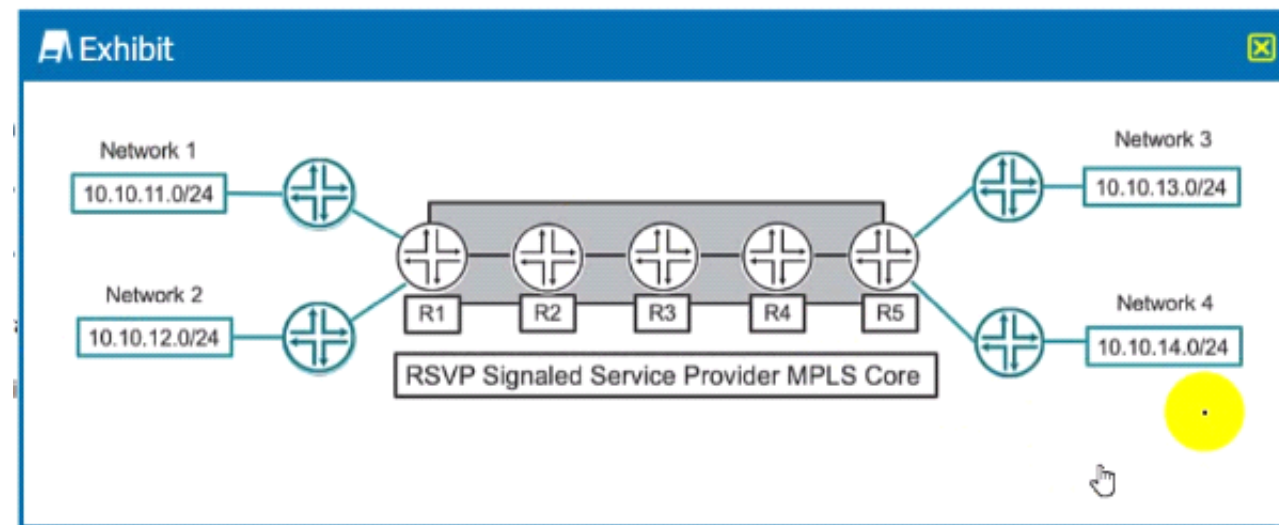
You are bringing a new network online with three IS-IS routers using default Junos election priorities. The routers are configured as Level 2 only IS-IS routers. Which statement is true about the DIS election in this scenario?

- A. The router with the highest MAC address will be elected as the DIS.
- B. The router with the highest numerical lo0 IP address will be elected as the DIS.
- C. The router with the lowest numerical lo0 IP address will be elected as the DIS.
- D. The router with the lowest MAC address will be elected as the DIS.

**Answer: B**

#### NEW QUESTION 58

Exhibit button



Which two statements are correct about the service provider MPLS network shown in the exhibit? (Choose two.)

- A. R3 will perform a label pop operation on the transport MPLS label.
- B. Traffic from Network 1 to Network 3 and traffic from Network 1 to Network 4 each need their own unique label-switched path.
- C. Traffic from Network 1 to Network 3 and from Network 1 to Network 4 can share the same label-switched path.
- D. R3 will perform a label swap operation on the transport MPLS label.

**Answer: AD**

#### NEW QUESTION 62

What is the correct order of BGP attributes for active route selection?

- A. next hop -> local preference -> AS path -> MED -> origin
- B. next hop -> AS path -> local preference -> origin -> MED
- C. next hop -> local preference -> AS path -> origin -> MED
- D. next hop -> origin -> local preference -> AS path -> MED

**Answer: C**

#### NEW QUESTION 67

.....

## Thank You for Trying Our Product

### We offer two products:

1st - We have Practice Tests Software with Actual Exam Questions

2nd - Questions and Answers in PDF Format

### JN0-363 Practice Exam Features:

- \* JN0-363 Questions and Answers Updated Frequently
- \* JN0-363 Practice Questions Verified by Expert Senior Certified Staff
- \* JN0-363 Most Realistic Questions that Guarantee you a Pass on Your First Try
- \* JN0-363 Practice Test Questions in Multiple Choice Formats and Updates for 1 Year

**100% Actual & Verified — Instant Download, Please Click**  
**[Order The JN0-363 Practice Test Here](#)**