

400-007 Dumps

Cisco Certified Design Expert (CCDE v3.0) Written Exam

<https://www.certleader.com/400-007-dumps.html>



NEW QUESTION 1

Which two mechanisms avoid suboptimal routing in a network with dynamic mutual redistribution between multiple OSPFv2 and EIGRP boundaries? (Choose two.)

- A. AD manipulation
- B. matching OSPF external routes
- C. route tagging
- D. route tagging
- E. route filtering
- F. matching EIGRP process ID

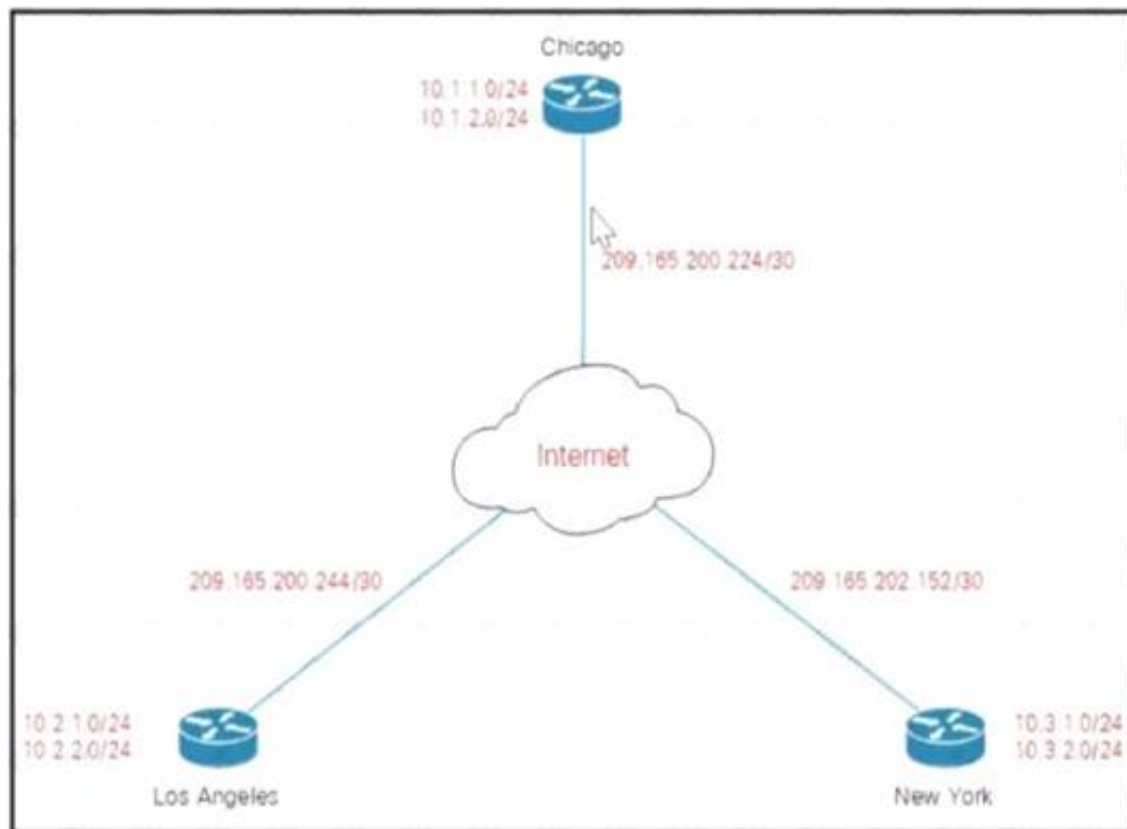
Answer: DE

Explanation:

<https://www.cisco.com/c/en/us/support/docs/ip/enhanced-interior-gateway-routing-protocol-eigrp/8606-redist.ht>

NEW QUESTION 2

Refer to the exhibit.



Company XYZ must design a DMVPN tunnel between the three sites Chicago is going to act as the NHS and the company wants DMVPN to detect peer endpoint failures Which technology should be used in the design?

- A. VPLS
- B. IP SLA
- C. GRE
- D. L2TPv3

Answer: B

NEW QUESTION 3

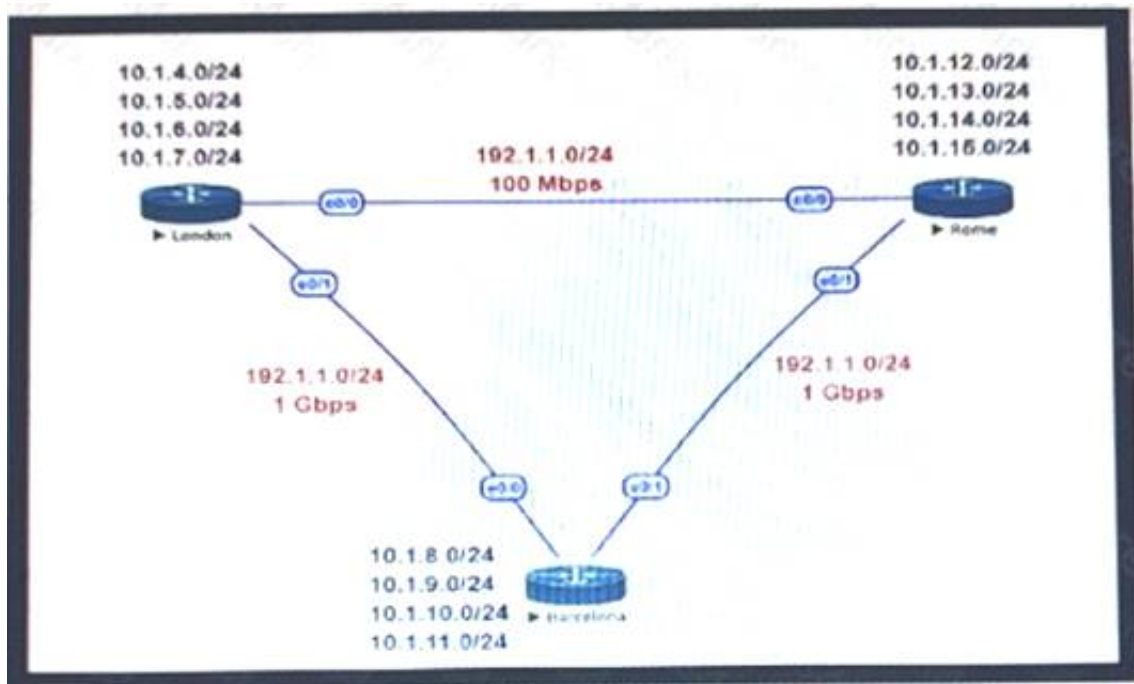
Which management category is not part of FCAPS framework?

- A. Configuration
- B. Security
- C. Performance
- D. Authentication
- E. Fault-management

Answer: D

NEW QUESTION 4

Refer to the exhibit.



This network is running OSPF as the routing protocol. The internal networks are being advertised in OSPF London and Rome are using the direct link to reach each other although the transfer rates are better via Barcelona Which OSPF design change allows OSPF to calculate the proper costs?

- A. Change the OSPF reference bandwidth to accommodate faster links.
- B. Filter the routes on the link between London and Rome
- C. Change the interface bandwidth on all the links.
- D. Implement OSPF summarisation to fix the issue

Answer: A

NEW QUESTION 5

A customer migrates from a traditional Layer 2 data center network into a new SDN-based spine-and-leaf VXLAN EVPN data center within the same location The networks are joined to enable host migration at Layer 2 What is the final migration step after hosts have physically migrated to have traffic flowing through the new network without changing any host configuration?

- A. Shut down legacy Layer 3 SVI
- B. clear ARP caches on all hosts being migrated and then configure the legacy VRRP address onto new VXLAN core switches
- C. Increase VRRP priorities on new infrastructure over legacy VRRP values, then shut down legacy SVIs
- D. Shut down legacy infrastructure to allow VXLAN gateways to become active
- E. Shut down legacy Layer 3 SVIs and activate new preconfigured Layer 3 SVIs on VXLAN

Answer: D

NEW QUESTION 6

Which three elements help network designers to construct secure systems that protect information and resources (such as devices, communication, and data) from unauthorized access, modification, inspection, or destruction? (Choose three.)

- A. confidential
- B. serviceability
- C. reliability
- D. availability
- E. integrity
- F. scalability

Answer: ADE

NEW QUESTION 7

Enterprise XYZ wants to implement fast convergence on their network and optimize timers for OSPF However they also want to prevent excess flooding of LSAs if there is a constantly flapping link on the network Which timers can help prevent excess flooding of LSAs for OSPF?

- A. OSPF propagation timers
- B. OSPF throttling timers
- C. OSPF delay timers
- D. OSPF flooding timers

Answer: B

NEW QUESTION 8

Company XYZ connects its sites over a private WAN. Their overlay network is running a DMVPN setup where the headquarters site is the hub. The company is planning on implementing multicast routing on the network. What should be used in the multicast routing design?

- A. PIM dense mode with RP located at the hub
- B. PIM sparse mode with RP located at each remote site
- C. PIM sparse mode with RP located at the hub
- D. PIM dense mode with RP located at each remote site

Answer: C

Explanation:

<https://www.ccexpert.us/routing-switching-2/dynamic-multipoint-vpn.html>

NEW QUESTION 9

Which technology supports antispoofing and does not have any impact on encryption performance regardless of packet size?

- A. MACsec
- B. IP source guard
- C. DHCP snooping with DAI
- D. IPsec

Answer: A

NEW QUESTION 10

Company XYZ uses an office model where the employees can use any open desk and plug their laptops in. They want to authenticate the end users using their domain username and password before allowing them access to the network. The design must also accommodate the ability of controlling traffic within the same group or subnet if a macro (or micro) segmentation-based model is adopted in the future. Which protocol can be recommended for this design to authenticate end users?

- A. LDAP
- B. EAP
- C. TACACS+
- D. RADIUS

Answer: D

Explanation:

<https://www.networkstraining.com/what-is-cisco-ise/>

NEW QUESTION 10

Company XYZ, a global content provider, owns data centers on different continents. Their data center design involves a standard three-layer design with a Layer 3-only core. VRRP is used as the FHRP. They require VLAN extension across access switches in all data centers, and they plan to purchase a Layer 2 interconnection between two of their data centers in Europe in the absence of other business or technical constraints. Which termination point is optimal for the Layer 2 interconnection?

- A. at the core layer, to offer the possibility to isolate STP domains
- B. at the access layer because the STP root bridge does not need to align with the VRRP active node
- C. at the core layer because all external connections must terminate there for security reasons
- D. at the aggregation layer because it is the Layer 2 to Layer 3 demarcation point

Answer: D

NEW QUESTION 13

A network architect must redesign a service provider edge, where multiservice and multitenant PEs are currently present. Which design feature should be minimized in the new design to achieve reliability?

- A. bridging
- B. fate sharing
- C. redundancy
- D. unicast overlay routing

Answer: B

NEW QUESTION 17

What is a web-based model in which a third-party provider hosts applications that are available to customers over the Internet?

- A. PaaS
- B. SaaS
- C. IaaS
- D. WaaS

Answer: B

NEW QUESTION 22

Which two benefits can software-defined networks provide to businesses? (Choose two.)

- A. provides additional redundancy
- B. reduction of OpEx/CapEx
- C. reduced latency
- D. decentralized management
- E. enables innovation
- F. meets high traffic demands

Answer: BE

NEW QUESTION 25

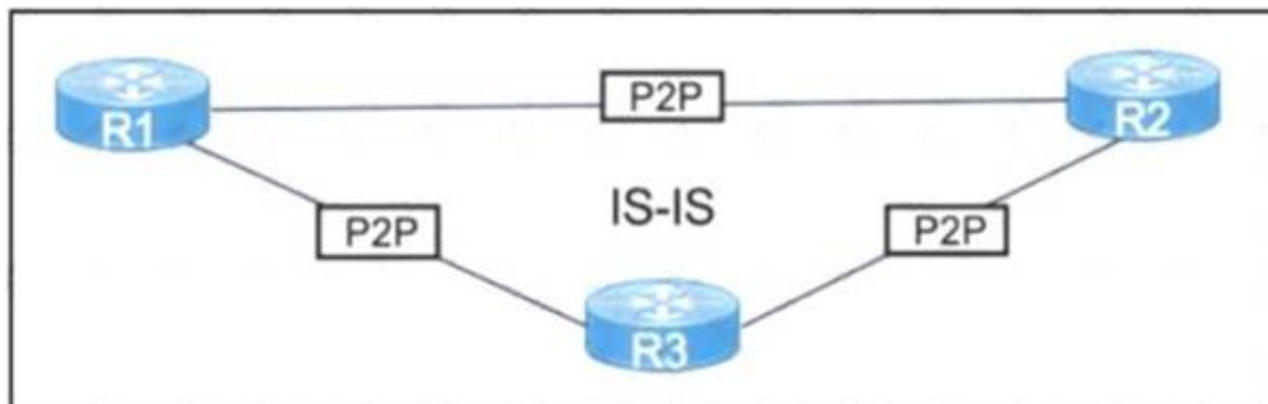
Which Interconnectivity method offers the fastest convergence in the event of a unidirectional issue between three Layer 3 switches connected together with routed links in the same rack in a data center?

- A. Copper Ethernet connectivity with BFD enabled
- B. Copper Ethernet connectivity with UDLD enabled
- C. Fiber Ethernet connectivity with BFD enabled
- D. Fiber Ethernet connectivity with UDLD enabled

Answer: C

NEW QUESTION 29

Refer to the exhibit.



After a network audit a network engineer must optimize the current network convergence time. The proposed solution must consider link layer and control plane failures. Which solution meets the requirements?

- A. Configure debounce timers
- B. Increase fast hello timers
- C. Implement BFD
- D. Enable LSP fast flood

Answer: C

NEW QUESTION 34

As part of workspace digitization, a large enterprise has migrated all their users to Desktop as a Service (DaaS), by hosting the backend system in their on-premises data center. Some of the branches have started to experience disconnections to the DaaS at periodic intervals, however, local users in the data center and head office do not experience this behavior. Which technology can be used to mitigate this issue?

- A. tail drop
- B. traffic shaping
- C. WRED
- D. traffic policing

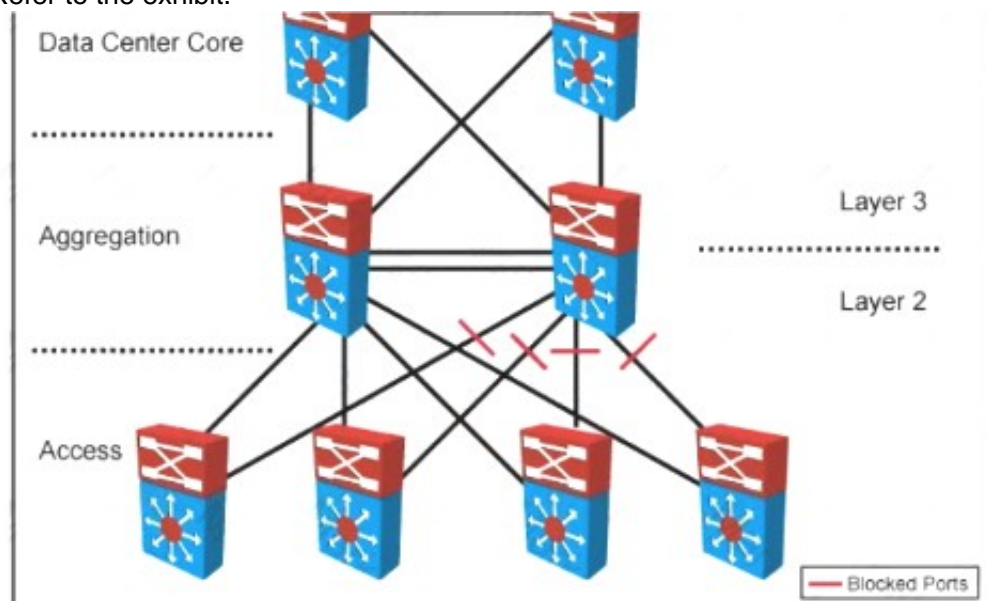
Answer: B

Explanation:

Traffic Shaping does help with congestion and better bandwidth utilization over the WAN.

NEW QUESTION 38

Refer to the exhibit.



Your company designed a network to allow server VLANs to span all access switches in a data center. In the design, Layer 3 VLAN interfaces and HSRP are configured on the aggregation switches. Which two features improve STP stability within the network design? (Choose two.)

- A. BPDU guard on access ports
- B. BPDU guard on the aggregation switch downlinks toward access switches
- C. root guard on the aggregation switch downlinks toward access switches
- D. root guard on access ports
- E. edge port on access ports
- F. access switch pairs explicitly determined to be root and backup root bridges

Answer: AE

NEW QUESTION 40

You are designing the routing design for two merging companies that have overlapping IP address space. Which of these must you consider when developing the routing and NAT design?

- A. Local to global NAT translation is done after routing
- B. Global to local NAT translation is done before routing.
- C. Local to global NAT translation is done before policy-based routing
- D. Global to local NAT translation is done after policy-based routing.

Answer: B

NEW QUESTION 44

Which two conditions must be met for EIGRP to maintain an alternate loop-free path to a remote network? (Choose two.)

- A. The Reported Distance from a successor is lower than the local Feasible Distance.
- B. The Reported Distance from a successor is higher than the local Feasible Distance.
- C. The feasibility condition does not need to be met.
- D. The Feasible Distance from a successor is lower than the local Reported Distance.
- E. A feasible successor must be present.

Answer: AE

NEW QUESTION 45

Drag and drop the design characteristics from the left onto the correct network filter techniques on the right. Not all options are used.

It is used to prevent spoofing attacks when there are alternate routes to a given IP address

It is used to check the existence of a route without regard to the incoming interface

It is a dynamic filter

It requires manual configuration

It is used as a filtering technique for Martian IP addresses

Ingress Access Lists

target 1

Strict Reverse Path Forwarding

target 2

Feasible Path Reverse Path Forwarding

target 3

Loose Reverse Path Forwarding

target 4

- A. Mastered
- B. Not Mastered

Answer: A

Explanation:

It is used to prevent spoofing attacks when there are alternate routes to a given IP address

It is used to check the existence of a route without regard to the incoming interface

It is a dynamic filter

It requires manual configuration

It is used as a filtering technique for Martian IP addresses

Ingress Access Lists

It requires manual configuration

Strict Reverse Path Forwarding

It is a dynamic filter

Feasible Path Reverse Path Forwarding

It is used to prevent spoofing attacks when there are alternate routes to a given IP address

Loose Reverse Path Forwarding

It is used as a filtering technique for Martian IP addresses

NEW QUESTION 47

The Leader of IT Certification

visit - <https://www.certleader.com>

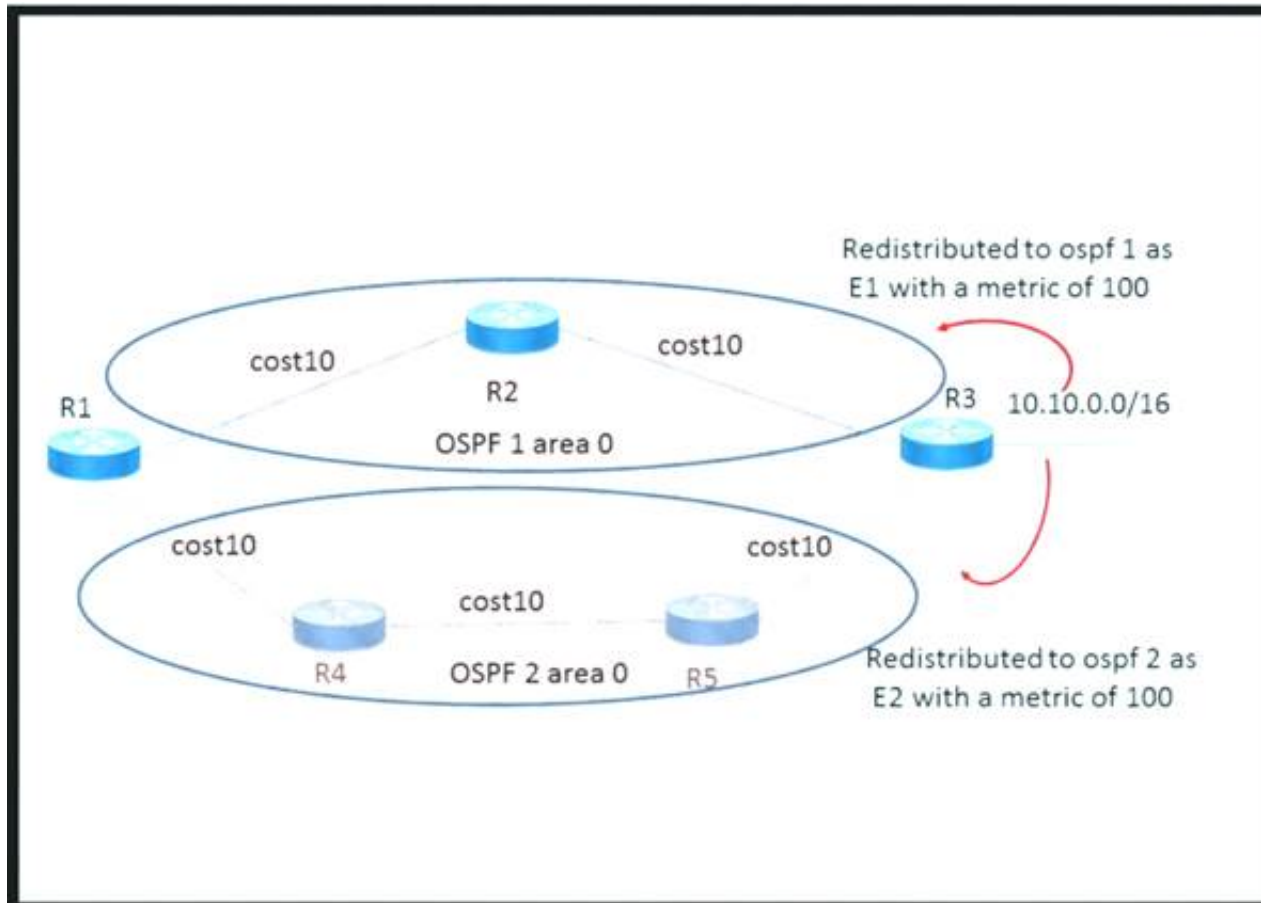
A financial company requires that a custom TCP-based stock-trading application be prioritized over all other traffic for the business due to the associated revenue. The company also requires that VoIP be prioritized for manual trades. Which directive should be followed when a QoS strategy is developed for the business?

- A. Allow VoIP and the custom application to share the same priority queue,
- B. The custom application and VoIP must be assigned their own separate priority queue.
- C. Interleave the custom application with other TCP applications in the same CBWR
- D. Avoid placing the custom application in a CBWFQ queue that contains other

Answer: C

NEW QUESTION 48

Refer to the exhibit.



The network 10.10.0.0/16 has been redistributed to OSPF processes and the best path to the destination from R1 has been chosen as R1-R2-R3. A failure occurred on the link between R2 and R3 and the path was changed to R1-R4-R5-R3. What happens when the link between R2 and R3 is restored?

- A. The path R1-R4-R5-R3 continues to be the best path because the metric is better
- B. The path reverts back to R1-R2-R3 because the route type is E1
- C. The path R1-R4-R5-R3 continues to be the best path because OSPF does not compare the metrics between two domains
- D. The path reverts to R1-R2-R3 because this was the previous best path

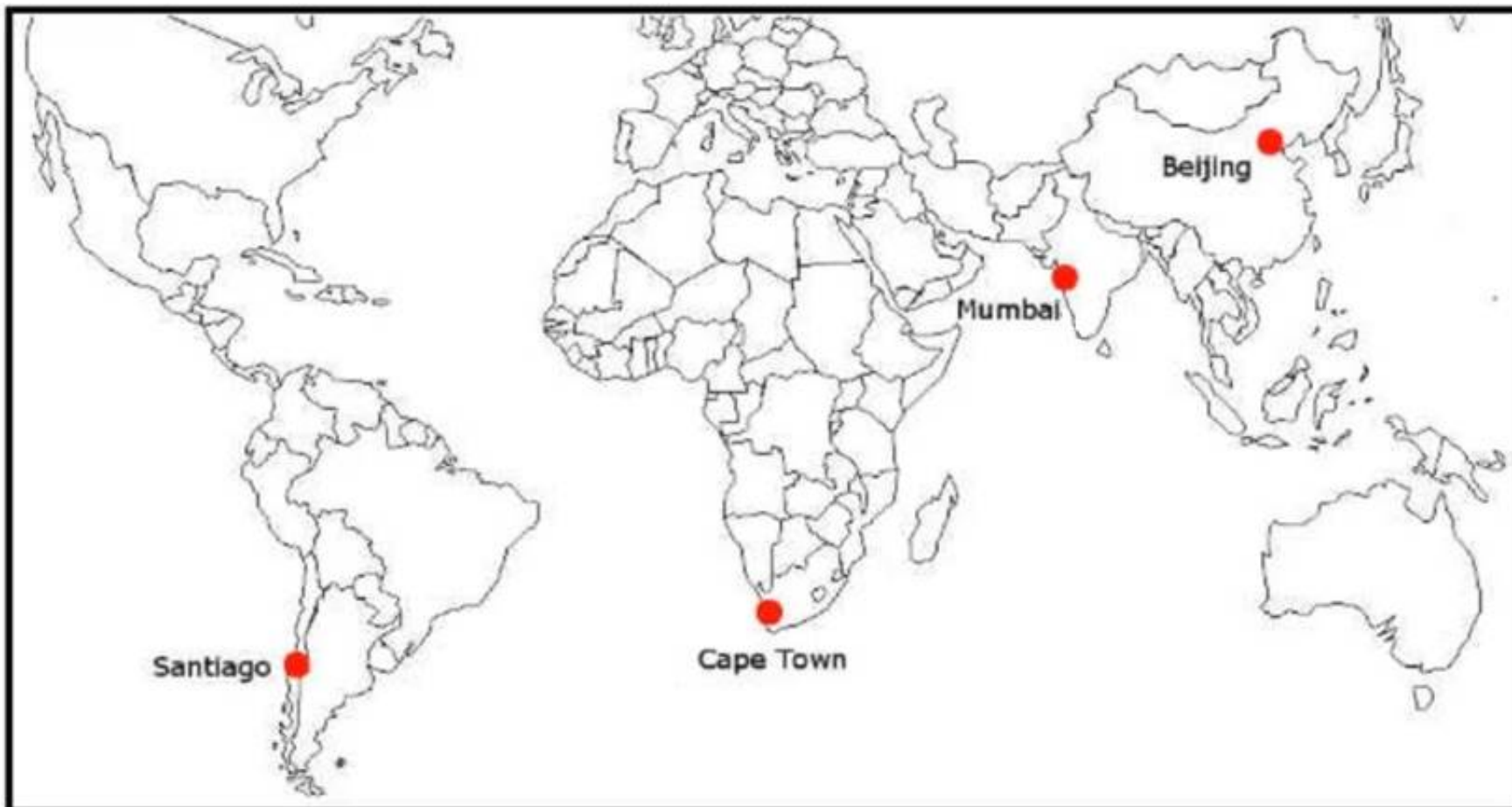
Answer: D

Explanation:

When the link between R2 and R3 is restored, the path reverts back to R1-R2-R3 because this was the previous best path. This is because OSPF uses the Dijkstra algorithm to calculate the shortest path tree (SPT) and the path with the lowest cost is chosen as the best path. In this case, the cost of the path R1-R2-R3 is lower than the cost of the path R1-R4-R5-R3, so the path R1-R2-R3 is chosen as the best path. OSPF also has a preference order for different types of routes, such as intra-area, inter-area, external type 1, external type 2, NSSA type 1, and NSSA type 2. However, this preference order only applies when OSPF has to choose between routes of different types to the same destination. In this scenario, both paths are external type 2 routes so the preference order does not affect the path selection.

NEW QUESTION 50

Refer to the exhibit.



ACME Mining has four data centers in Santiago. Cape Town. Mumbai, and Beijing, full-mesh connected via a 400 Mb/s EVP-LAN They want to deploy a new mission-critical application with these requirements:

- cluster heartbeat 2 Mb/s continuous (250 KB/s)
- cluster heartbeat one-way maximum latency 100 ms

These are the current ping tests results between the four data centers:

	Santiago	Cape Town	Mumbai	Beijing
Santiago	-	280 ms	378 ms	409 ms
Cape Town	280 ms	-	185 ms	445 ms
Mumbai	383 ms	176 ms	-	443 ms
Beijing	430 ms	448 ms	442 ms	-

Which hosting data center pair can host the new application?

- A. Mumbai and Beijing
- B. Santiago and Cape Town
- C. Santiago and Mumbai
- D. Cape Town and Mumbai
- E. Cape Town and Beijing
- F. Santiago and Beijing

Answer: D

NEW QUESTION 52

Drag and drop the FCAPS network management reference models from the left onto the correct definitions on the right.

Fault Management	ensures that network transit quality remains at acceptable levels
Configuration Management	gathers usage statistics for users and business units
Accounting Management	gathers and stores configuration code from network devices
Performance Management	recognizes, isolates, corrects, and logs events that occur in the network
Security Management	controls access to assets in the network

- A. Mastered
- B. Not Mastered

Answer: A

Explanation:

Fault Management	= Recognize, isolates, corrects, and logs events that occur in the network
Configuration Management	= Gathers and stores configuration code from network devices
Performance Management	= ensures that network transit quality remains at acceptable laevels
Security Management	= Controls access to assets in the network
Accounting Management	= gathers usage statistics for users and business units

NEW QUESTION 54

A European government passport agency considers upgrading its IT systems to increase performance and workload flexibility in response to constantly changing requirements. The budget manager wants to reduce capital expenses and IT staff and must adopt the lowest-cost technology. Which technology choice is suitable?

- A. on premises
- B. private cloud
- C. public cloud
- D. hybrid cloud

Answer: C

NEW QUESTION 58

An enterprise wants to migrate an on-premises network to a cloud network, and the design team is finalizing the overall migration process. Drag and drop the options from the left into the correct order on the right.

Identify the right applications and portfolio for cloud migration and cloud viability.	step 1
Maintain data integrity and operational continuity.	step 2
Adopt end-to-end approach and transition workloads to the cloud environment.	step 3
Develop cloud strategy and ensure alignment with business requirements.	step 4
Secure the cloud by setting up a secure cloud environment based on the workload requirements.	step 5
Monitor and manage cloud-based systems, including customer services.	step 6

- A. Mastered
- B. Not Mastered

Answer: A

Explanation:

Table Description automatically generated

NEW QUESTION 60

An enterprise has identified these causes for inefficient CAPEX spending:

- > CAPEX planning is driven by technology and not by business objectives.
- > The CAPEX planning team lacks the data it needs to perform due diligence tasks.
- > The organizational structure lacks sufficient accountability and incentives.

Which corporate cultural change contributes to improving the effectiveness of CAPEX spending?

- A. Build a financial control function that delivers high-quality reports on operational expenses for business insight and financial reporting.
- B. CxO-level staff must have a full technical understanding but the should not trust their technical leaders fully.
- C. Adopt new organizational models that promote real accountability for RO
- D. not just revenu
- E. EBITDA, and cash.
- F. Marketing and product management divisions must reduce their CAPEX budgets significantly to drive the change.

Answer: C

NEW QUESTION 61

You have been asked to design a high-density wireless network for a university campus. Which two principles would you apply in order to maximize the wireless network capacity? (Choose two.)

- A. Implement a four-channel design on 2.4 GHz to increase the number of available channels
- B. Choose a high minimum data rate to reduce the duty cycle.
- C. increases the number of SSIDs to load-balance the client traffic.
- D. Make use of the 5-GHz band to reduce the spectrum utilization on 2.4 GHz when dual-band clients are used.
- E. Enable 802.11n channel bonding on both 2.4 GHz and 5 GHz to increase the maximum aggregated cell throughput.

Answer: BD

NEW QUESTION 63

What is the most important operational driver in building a resilient and secure modular network design?

- A. Dependencies on hardware or software that is difficult to scale
- B. Minimize app downtime
- C. Reduce the frequency of failures requiring human intervention
- D. Increase time spent on developing new features

Answer: B

NEW QUESTION 67

Which two actions ensure voice quality in a branch location with a low-speed, high-latency WAN connection? (Choose two.)

- A. Increase WAN bandwidth
- B. Increase memory branch switch.
- C. Fragment data packets.
- D. Replace any electrical links with optical links
- E. Prioritize voice packets

Answer: CE

NEW QUESTION 72

Company XYZ wants to prevent switch loops caused by unidirectional point-point-link condition on Rapid FVST + and MST. Which technology can be used in the design to meet this requirement?

- A. STPBPDU guard
- B. STP bridge assurance
- C. MSTP
- D. TRILL

Answer: B

NEW QUESTION 75

Which two technologies enable multilayer segmentation? (Choose two.)

- A. policy-based routing
- B. segment routing
- C. data plane markings
- D. firewalls
- E. filter lists

Answer: AD

NEW QUESTION 78

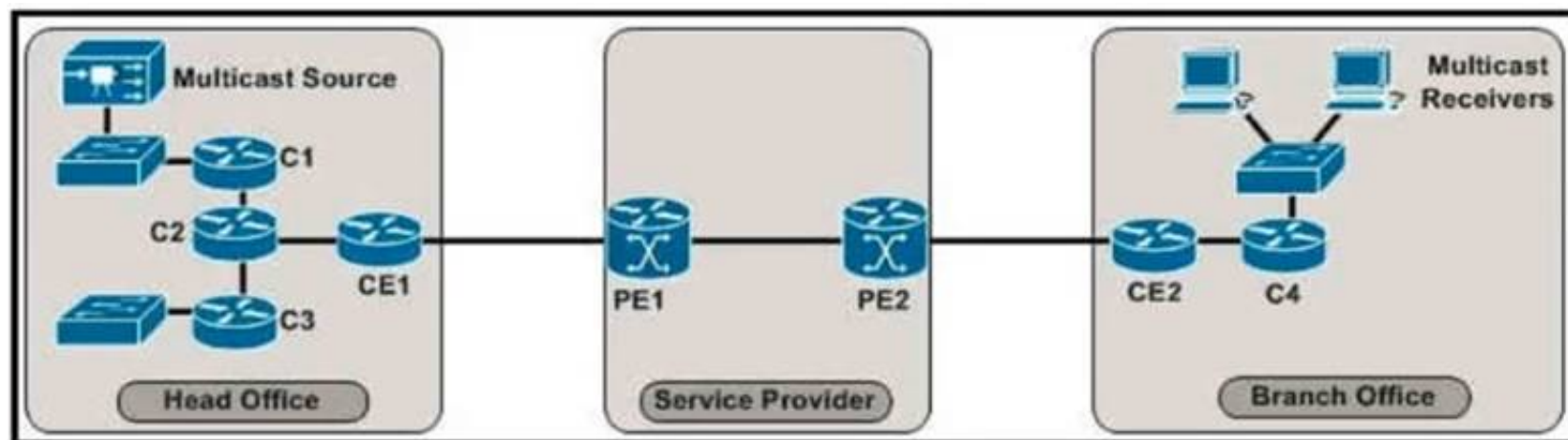
In an OSPF network with routers connected together with Ethernet cabling, which topology typically takes the longest to converge?

- A. partial mesh
- B. full mesh
- C. ring
- D. squared
- E. triangulated

Answer: B

NEW QUESTION 79

Refer to the exhibit.



The enterprise customer wants to stream one-way video from their head office to eight branch offices using multicast. Their current service provider provides a Layer3 VPN solution and manages the CE routers, but they do not currently support multicast. Which solution quickly allows this multicast traffic to go through while allowing for future scalability?

- A. Enable a GRE tunnel between nodes CE1 and CE2
- B. Enable a GRE tunnel between nodes C2 and C4
- C. Enable a GRE tunnel between nodes C1 and C4
- D. Implement hub and spoke MPLS VPN over DMVPN (also known as 2547o DMVPN) between CE1 and CE2
- E. The service provider must provide a Draft Rosen solution to enable a GRE tunnel between nodes PE1 and PE2

Answer: B

NEW QUESTION 84

Refer to the exhibit.

	Equipment Cost	ISP Cost	Licenses Cost
SD-WAN over L3VPN	\$\$	\$\$	\$\$\$
SD-WAN over L2VPN	\$\$	\$	\$\$\$
Managed SD-WAN	\$	\$\$\$	-
DMVPN over L3VPN	\$\$	\$\$	\$

The WAN network of the General Bank of Greece has experienced several outages It takes too long to activate a new branch site The networking department of the bank plans to upgrade the legacy end-of-life WAN network with a new flexible manageable, and scalable in-house solution The number of branches will increase exponentially in the next fiscal year The CTO states that the bank's mam goal is OPEX reduction The network engineering team prepares a table to evaluate the available options Which WAN technology can be used for the solution?

- A. DMVPN over L3VPN
- B. Managed SD-WAN
- C. SD-WAN over L3VPN
- D. SD-WAN over L2VPN

Answer: B

NEW QUESTION 88

An engineer must design a network for a company that uses OSPF LFA to reduce loops. Which type of loop would be reduced by using this design?

- A. DTP
- B. micro loops
- C. STP
- D. REP

Answer: B

NEW QUESTION 92

Refer to the table.

CONNECTIVITY	CAPEX	OPEX ANNUAL	INSTALLATION FEE	TERM
DWDM over dark fiber	\$250,000	\$100,000	\$30,000	12 months
CWDM over dark fiber	\$150,000	\$100,000	\$25,000	18 months
MPLS wires only	\$50,000	\$80,000	\$5,000	24 months
Metro Ethernet	\$45,000	\$100,000	\$5,000	36 months

A customer investigates connectivity options for a DCI between two production data centers to aid a large-scale migration project. The solution must provide a single 10G connection between locations and be able to run its own varying QoS profiles without service provider interaction based on the migration stages. All connectivity methods are at 10 Gbps. Which transport technology costs the least if the connectivity is required for just one year?

- A. MPLS wires only
- B. CWDM over dark fiber
- C. DWDM over dark fiber
- D. Metro Ethernet

Answer: A

NEW QUESTION 94

Company XYZ is running a redundant private WAN network using OSPF as the underlay protocol. The current design accommodates for redundancy in the network, but it is taking over 30 seconds for the network to reconverge upon failure. Which technique can be implemented in the design to detect such a failure in a subsecond?

- A. STP
- B. fast sharing
- C. OSPF LFA
- D. BFD
- E. flex links

Answer: D

NEW QUESTION 98

Company XYZ has a hub-and-spoke topology over an SP-managed infrastructure. To measure traffic performance metrics, they implemented IP SLA senders on all spoke CE routers and an IP SLA responder on the hub CE router. What must they monitor to have visibility on the potential performance impact due to the constantly increasing number of spoke sites?

- A. CPU and memory usage on the spoke routers
- B. memory usage on the hub router
- C. CPU usage on the hub router
- D. interface buffers on the hub and spoke routers

Answer: C

NEW QUESTION 100

Company XYZ is planning to deploy primary and secondary (disaster recovery) data center sites. Each of these sites will have redundant SAN fabrics and data protection is expected between the data center sites. The sites are 100 miles (160 km) apart and target RPO/RTO are 3 hrs and 24 hrs, respectively. Which two considerations must Company XYZ bear in mind when deploying replication in their scenario? (Choose two.)

- A. Target RPO/RTO requirements cannot be met due to the one-way delay introduced by the distance between sites.
- B. VSANs must be routed between sites to isolate fault domains and increase overall availability.
- C. Synchronous data replication must be used to meet the business requirements.
- D. Asynchronous data replication should be used in this scenario to avoid performance impact in the primary site.
- E. VSANs must be extended from the primary to the secondary site to improve performance and availability.

Answer: CD

Explanation:

synchronous data replication must be used to meet the business requirements, is incorrect. As described above, asynchronous replication would be a better choice in this scenario due to the distance between the data center sites and the target RPO/RTO requirements.

asynchronous data replication should be used in this scenario to avoid performance impact in the primary site, is correct. Asynchronous replication would allow Company XYZ to meet the target RPO/RTO requirements while avoiding the performance impact of synchronous replication.

NEW QUESTION 102

An IT service provider is upgrading network infrastructure to comply with PCI security standards. The network team finds that 802.1X and VPN authentication based on locally-significant certificates are not available on some legacy phones. Which workaround solution meets the requirement?

- A. Replace legacy phones with new phones because the legacy phones will lose trust if the certificate is renewed.
- B. Enable phone VPN authentication based on end-user username and password.
- C. Temporarily allow fallback to TLS 1.0 when using certificates and then upgrade the software on legacy phones.
- D. Use authentication-based clear text password with no EAP-MD5 on the legacy phones.

Answer: B

NEW QUESTION 107

Which design benefit of bridge assurance is true?

- A. It suppresses a spanning-tree topology change upon connecting and disconnecting a station on a port.
- B. It prevents switched traffic from traversing suboptimal paths on the network.
- C. It allows small, unmanaged switches to be plugged into ports of access switches without the risk of switch loops.
- D. It prevents switch loops caused by unidirectional point-to-point link condition on Rapid PVST+ and MST.

Answer: D

NEW QUESTION 110

Which two pain points are the most common for container technology adoption? (Choose two)

- A. Performance
- B. Security
- C. Cost
- D. Container deployment
- E. Skilled staff
- F. Compliance

Answer: DE

NEW QUESTION 112

A business invests in SDN and develops its own SDN controller that, due to budget constraints, runs on a single controller. The controller actively places an exclusive lock on the configuration of the devices to ensure it is the only source of changes to the environment. What is the result if the controller fails?

- A. All device configurations are in read-only mode until the controller is restored.
- B. The control plane is unavailable until the controller is restored.
- C. If a device fails, the configuration backup is unavailable
- D. Manual changes are only possible until the controller is restored

Answer: B

NEW QUESTION 115

You are designing a network for a branch office. In order to improve convergence time, you are required to use the BFD feature Which four routing protocols can you use to facilitate this? (Choose four.)

- A. IS-IS
- B. static
- C. RIP
- D. EIGRP
- E. BGP

Answer: ABDE

NEW QUESTION 119

Company XYZ is designing the network for IPv6 security and they have these design requirements:

- A switch or router must deny access to traffic from sources with addresses that are correct, but are topologically incorrect
- Devices must block Neighbor Discovery Protocol resolution for destination addresses that are not found in the binding table.

Which two IPv4 security features are recommended for this company? (Choose two)

- A. IPv6 DHCP Guard
- B. IPv6 Source Guard
- C. IPv6 Destination Guard
- D. IPv6 Prefix Guard
- E. IPv6 RA Guard

Answer: CD

Explanation:

https://www.cisco.com/c/dam/global/ja_jp/td/docs/ios-xml/ios/ipv6_fhsec/configuration/xe-16/ip6f-xe-16-book.

NEW QUESTION 123

An enterprise that runs numerous proprietary applications has major issues with its on-premises server estate hardware, to the point where business-critical functions are compromised. The enterprise accelerates plans to migrate services to the cloud. Which cloud service should be used if the enterprise wants to avoid hardware issues yet have control of its applications and operating system?

- A. SaaS
- B. PaaS
- C. IaaS
- D. hybrid cloud

Answer: C

NEW QUESTION 127

A company plans to use BFD between its routers to detect a connectivity problem inside the switched network. An IPS is transparently installed between the switches. Which packets should the IPS forward for BFD to work under all circumstances?

- A. Fragmented packet with the do-not-fragment bit set
- B. IP packets with broadcast IP source addresses
- C. IP packets with the multicast IP source address
- D. IP packet with the multicast IP destination address
- E. IP packets with identical source and destination IP addresses
- F. IP packets with the destination IP address 0.0.0.0.

Answer: E

NEW QUESTION 132

A key to maintaining a highly available network is building in the appropriate redundancy to protect against failure. This redundancy is carefully balanced with the inherent complexity of redundant systems. Which design consideration is relevant for enterprise WAN use cases when it comes to resiliency?

- A. Design in a way that expects outages and attacks on the network and its protected resources
- B. The design approach should consider simple and centralized management aspect
- C. Design in a way that it simplifies and improves ease of deployment
- D. Design automation tools wherever it is appropriate for greater visibility

Answer: A

NEW QUESTION 135

Which two statements explain the operation of BFD asynchronous mode? (Choose two)

- A. BFD asynchronous mode with echo packets combines the control packets and echo packets into a single packet.
- B. BFD asynchronous mode without echo packets uses control packets, and BFD asynchronous mode with echo packets does not.
- C. BFD asynchronous mode with and without echo packets use control packets.
- D. BFD asynchronous without echo packets has control packets sent back to the originating router, which echoes the control packet to detect failures.
- E. BFD asynchronous mode with echo packets uses separate control packets and echo packets.

Answer: CE

NEW QUESTION 137

A business requirement is supplied to an architect from a car manufacturer stating their business model is changing to just-in-time manufacturing and a new network is required, the manufacturer does not produce all of the specific components m-house. which area should the architect focus on initially?

- A. Automation
- B. Zero Trust Networking
- C. Low Latency Infrastructure
- D. Modularity

Answer: D

NEW QUESTION 140

Company XYZ branch offices connect to the headquarter sites using two links, MPLS and Internet. The company wants to design the traffic flow so that voice traffic goes through the MPLS link and all other traffic uses either the MPLS link or the Internet link. Which technique can the company use in their design to ensure that the traffic is not process switched?

- A. policy-based routing
- B. virtual links
- C. visualization
- D. floating static route

Answer: A

NEW QUESTION 143

What are two design constraints in a standard spine and leaf architecture? (Choose two.)

- A. Spine switches can connect to each other.
- B. Each spine switch must connect to every leaf switch.
- C. Leaf switches must connect to each other.
- D. Endpoints connect only to the spine switches.
- E. Each leaf switch must connect to every spine switch.

Answer: BE

NEW QUESTION 147

While designing a switched topology, in which two options is UplinkFast recommended? (Choose two)

- A. when switches of different spanning-tree types are connected (for exampl
- B. 802.1d connecting to 802.1w)
- C. on distribution layer switches
- D. when hello timers are changed to more aggressive values
- E. on access layer switches
- F. on the core switches

Answer: AD

NEW QUESTION 151

Company XYZ wants to improve the security design of their network to include protection from reconnaissance and DoS attacks on their sub interfaces destined toward next hop routers. Which technology can be used to prevent these types of attacks?

- A. MPP
- B. CPPr
- C. CoPP
- D. DPP

Answer: B

Explanation:

<https://learningnetwork.cisco.com/s/question/0D53i00000KsuyvCAB/copp-vs-cppr>

NEW QUESTION 154

Which two possible drawbacks should you consider when introducing Network Functions Virtualization in a network design? (Choose two)

- A. Bandwidth utilization increases
- B. Traffic flows are suboptimal
- C. High-end routers are required to support NFV
- D. OpenFlow must be supported in the network
- E. An SDN orchestration layer is required to support NFV

Answer: CE

NEW QUESTION 156

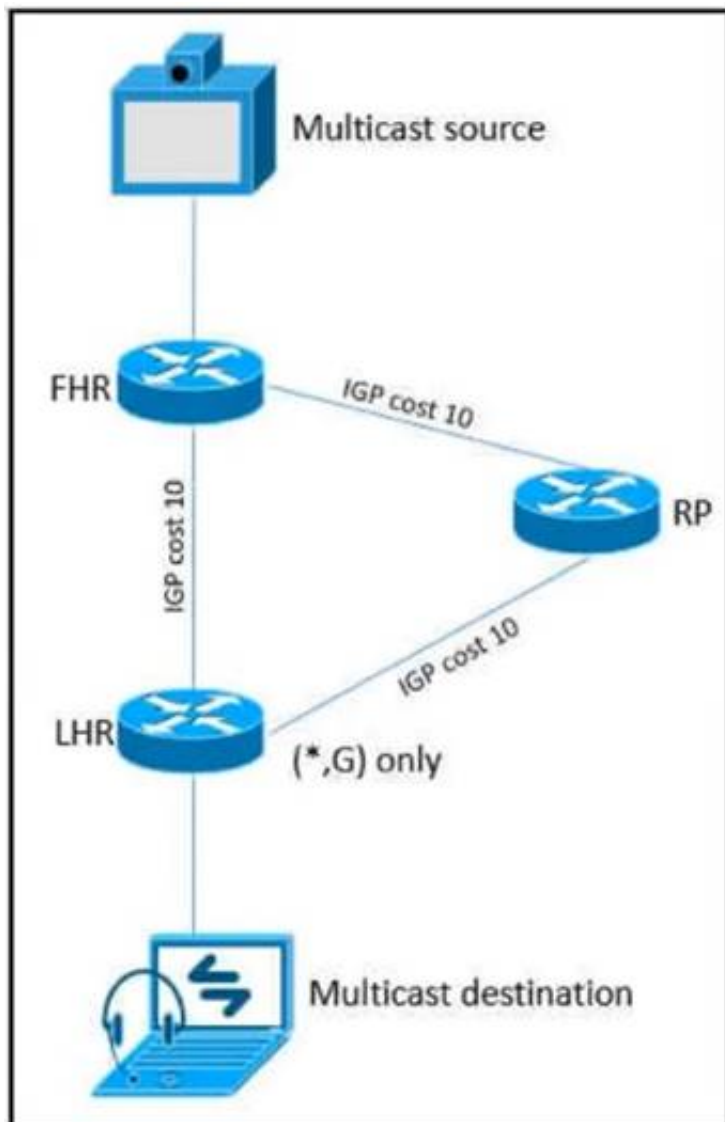
Company XYZ has designed their network to run GRE over IPsec on their Internet-based VPN to connect two sites. Which IPsec tunneling feature can they enable to optimize the data flow while ensuring that the headers contain no duplicate IP addresses?

- A. Transport Mode in IPsec Phase I
- B. Transport Mode in IPsec Phase II
- C. Tunnel Mode in IPsec Phase II
- D. Tunnel Mode in IPsec Phase I

Answer: B

NEW QUESTION 158

Refer to the exhibit.



As part of a redesign project, you must predict multicast behavior. What happens to the multicast traffic received on the shared tree (*,G), if it is received on the LHR interface indicated*?

- A. It is dropped due to an unsuccessful RPF check against the multicast source
- B. It is switched given that no RPF check is performed
- C. It is switched due to a successful RPF check against the routing table
- D. It is dropped due to an unsuccessful RPF check against the multicast receiver.

Answer: A

Explanation:

<https://www.cisco.com/c/en/us/support/docs/ip/ip-multicast/16450-mcastguide0.html>

When a multicast packet arrives on an interface, the RPF process checks to ensure that this incoming interface is the outgoing interface used by unicast routing in order to reach the source of the multicast packet. This RPF check process prevents loops. Multicast routing does not forward a packet unless the source of the packet passes a RPF check. Once a packet passes this RPF check, multicast routing forwards the packet based only upon the destination address.

NEW QUESTION 159

Which two benefits can software defined networks provide to businesses? (Choose two.)

- A. provides additional redundancy
- B. decentralized management
- C. reduced latency
- D. enables innovation
- E. reduction of OpEx/CapEx
- F. meets high traffic demands

Answer: DE

NEW QUESTION 160

What are two advantages of controller-based networks versus traditional networks? (Choose two.)

- A. the ability to have forwarding tables at each device
- B. more flexible configuration per device
- C. more consistent device configuration
- D. programmatic APIs that are available per device
- E. the ability to configure the features for the network rather than per device

Answer: CE

NEW QUESTION 161

Which two statements describe network automation and network orchestration? (Choose two.)

- A. Network automation does not provide governance or policy management.
- B. Network automation spans multiple network services, vendors, and environments.
- C. Network orchestration is done through programmatic REST APIs enabling automation across devices and management platforms.
- D. Provisioning network services is an example of network automation.
- E. Network orchestration is used to run single, low-level tasks without human intervention

Answer: AC

NEW QUESTION 164

Which two application requirements are mandatory for traffic to receive proper treatment when placed in the priority queue? (Choose two.)

- A. small transactions (HTTP-like behavior)
- B. WRED drop treatment
- C. tolerance to packet loss
- D. intolerance to jitter
- E. TCP-based application

Answer: AD

NEW QUESTION 169

The Agile Manifesto is a document that defines the key values and principles behind the Agile philosophy and helps development teams work more efficiently and sustainably. Each of the four key values is split into two sections: a left-hand side and a right-hand side. In other words, though there is value in the items on the right, we value the items on the left more. What is one of the key values of the Agile Manifesto?

- A. comprehensive documentation over working software
- B. contract negotiation over customer collaboration
- C. individuals and interactions over processes and tools
- D. following a plan over responding to change

Answer: C

NEW QUESTION 170

Customer XYZ network consists of an MPLS core. IS-IS running as IGP, a pair of BGP route reflectors for route propagation, and a few dozens of MPLS-TE tunnels for specific tactical traffic engineering requirements. The customer's engineering department has some questions about the use of the Overload Bit in the IS-IS networks and how it could be used to improve their current network design. Which two concepts about the Overload Bit are true? (Choose two.)

- A. It can be set on a router during the startup process for a fixed period of time.
- B. Networks advertised within the LSPs of the respective node will become unreachable.
- C. It forces the midpoint MPLS-TE node to reoptimize the primary tunnels going through the OL node.
- D. It can be set on a router until other interacting protocols have signaled convergence.
- E. It is not recommended on BGP Route Reflectors.

Answer: AD

NEW QUESTION 175

An architect receives a functional requirement for a NAC system from a customer security policy stating that if a corporate Wi-Fi device does not meet current AV definitions, then it cannot access the corporate network until the definitions are updated. Which component should be built into the NAC design?

- A. posture assessment with remediation VLAN
- B. quarantine SGTs
- C. dACLs with SGTs
- D. quarantine VLAN

Answer: A

NEW QUESTION 176

What is a characteristic of a secure cloud architecture model?

- A. limited access to job function

- B. dedicated and restricted workstations
- C. multi-factor authentication
- D. software-defined network segmentation

Answer: C

NEW QUESTION 181

Company XYZ wants to use the FCAPS ISO standard for network management design. The focus of the design should be to monitor and keep track of any performance issues by continuously collecting and analyzing statistical information to monitor, correct, and optimize any reduced responsiveness across the network. Which layer accomplishes this design requirement?

- A. fault management
- B. accounting management
- C. performance management
- D. security management

Answer: C

NEW QUESTION 184

The Layer 3 control plane is the intelligence over the network that steers traffic toward its intended destination. Which two techniques can be used in service provider-style networks to offer a more dynamic, flexible, controlled, and secure control plane design? (Choose two.)

- A. access control lists
- B. firewalls
- C. QoS policy propagation with BGP
- D. remote black-holing trigger
- E. prefix lists

Answer: DE

NEW QUESTION 186

What are two descriptions of network optimization? (Choose two.)

- A. maintain high availability
- B. proactive network management
- C. network redesign
- D. network health maintenance
- E. identify network requirements

Answer: AD

NEW QUESTION 188

Which two actions must be taken when assessing an existing wireless network implementation for its readiness to support voice traffic? (Choose two.)

- A. Check for high roaming delay.
- B. Check for uniform radio coverage across the floors.
- C. Check for high channel utilization.
- D. Check for latency over wireless.
- E. Identify frequent TX power changes.

Answer: AC

Explanation:

<https://community.cisco.com/t5/wireless/channel-utilization/td-p/2716667>

NEW QUESTION 193

A business requirement stating that failure of WAN access for dual circuits into an MPLS provider for a Data Centre cannot happen due to related service credits that would need to be paid has led to diversely routed circuits to different points of presence on the providers network? What should a network designer also consider as part of the requirement?

- A. Provision of an additional MPLS provider
- B. Out of band access to the MPLS routers
- C. Ensuring all related remote branches are dual homed to the MPLS network
- D. Dual PSUs & Supervisors on each MPLS router

Answer: A

NEW QUESTION 195

A consultant needs to evaluate project management methodologies for a new service deployment on the existing network of a customer. The customer wants to be involved in the end-to-end project progress and be provided with frequent updates. The customer also wants the ability to change the requirements if needed, as the project progresses. Which project management methodology should be used?

- A. three principles
- B. phased
- C. Agile
- D. Waterfall

Answer: C

NEW QUESTION 196

Company XYZ has two routing domains in their network, EIGRP and OSPF. The company wants to provide full reachability between the two domains by implementing redistribution on a router running both protocols. They need to design the redistribution in a way that the OSPF routers will see link costs added to external routes. How must the redistribution strategy be designed for this network?

- A. Redistribute using metric type 2 into OSPF.
- B. Redistribute using metric type 1 into OSPF.
- C. Redistribute using metric type 1 into EIGRP.
- D. Redistribute using metric type 2 into EIGRP.

Answer: B

Explanation:

[https://www.ciscopress.com/articles/article.asp?p=27573&seqNum=4#:~:text=Routes%20are%20redistributed%](https://www.ciscopress.com/articles/article.asp?p=27573&seqNum=4#:~:text=Routes%20are%20redistributed%20)

NEW QUESTION 200

A network engineering team is in the process of designing a lab network for a customer demonstration. The design engineer wants to show that the resiliency of the MPLS traffic Engineering Fast Reroute solution has the same failover/failback times as a traditional SONET/SDH network (around 50MSEC). In order to address both link failure and node failure within the lab typology network, which type of the MPLS TE tunnels must be considered for this demonstration?

- A. TE backup tunnel
- B. Next-hop (NHop) tunnel
- C. FRR Backup tunnel
- D. next-next-hop (NNHop) tunnel

Answer: D

NEW QUESTION 201

Which function is performed at the access layer of the three-layer hierarchical network design model?

- A. fault isolation
- B. QoS classification and marking boundary
- C. reliability
- D. fast transport
- E. redundancy and load balancing

Answer: B

NEW QUESTION 205

Which best practice ensures data security in the private cloud?

- A. Use IPsec for communication between unsecured network connection
- B. Encrypt data at rest and in transition.
- C. Use the same vendor for consistent encryption.
- D. Anonymize data ownership to comply with privacy rules.

Answer: B

NEW QUESTION 208

In the case of outsourced IT services, the RTO is defined within the SLA. Which two support terms are often included in the SLA by IT and other service providers? (Choose two.)

- A. network size and cost
- B. support availability
- C. network sustainability
- D. network reliability
- E. resolution time

Answer: BE

NEW QUESTION 210

An engineer is designing the QoS strategy for Company XYZ. Based on initial analysis, a lot of scavenger type of traffic is traversing the network's 20Mb Internet link toward the service provider. The new design must use a QoS technique that limits scavenger traffic to 2 Mbps, which helps avoid oversubscription of the link during times of congestion. Which QoS technique can be used to facilitate this requirement?

- A. class-based traffic policing
- B. LLQ
- C. CBWFQ
- D. class-based traffic shaping

Answer: D

NEW QUESTION 211

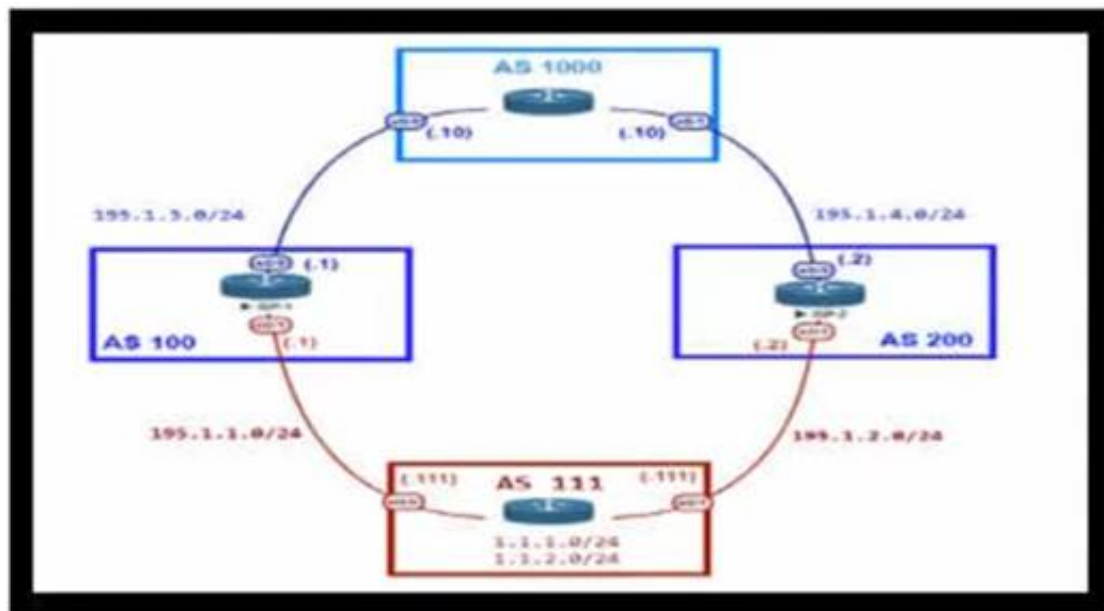
What are two primary design constraints when a robust infrastructure solution is created? (Choose two.)

- A. monitoring capabilities
- B. project time frame
- C. staff experience
- D. component availability
- E. total cost

Answer: BE

NEW QUESTION 213

Refer to the exhibit.



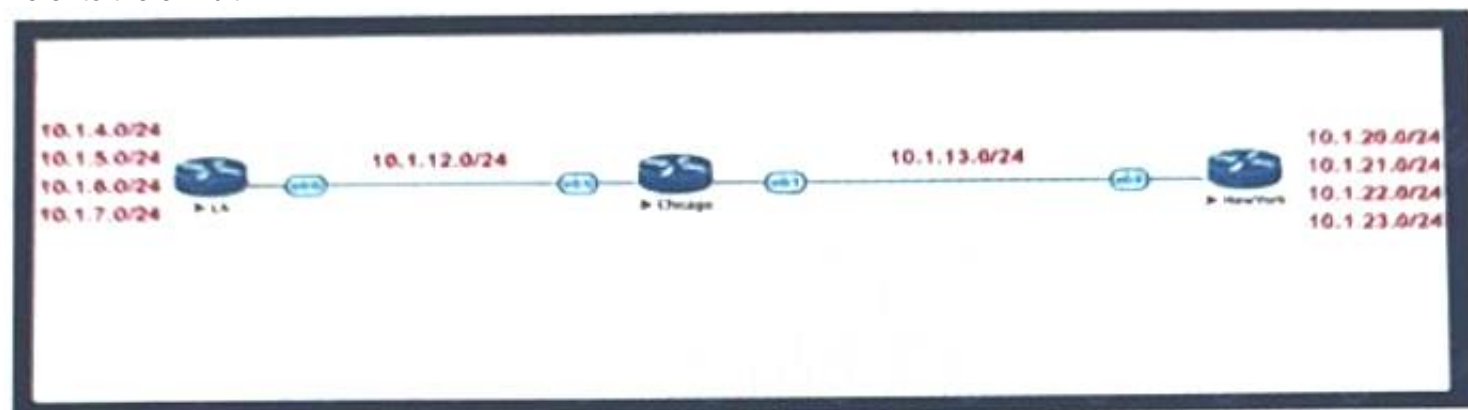
An engineer is designing the network for a multihomed customer running in AS 111 does not have any other Ass connected to it. Which technology is more comprehensive to use in the design to make sure that the AS is not being used as a transit AS?

- A. Configure the AS-set attribute to allow only routes from AS 111 to be propagated to the neighbor ASs.
- B. Use the local preference attribute to configure your AS as a non-transit" AS.
- C. include an AS path access list to send routes to the neighboring ASs that only have AS 111 in the AS path field.
- D. Include a prefix list to only receive routes from neighboring ASs.

Answer: C

NEW QUESTION 217

Refer to the exhibit.



Company XYZ BGP topology is as shown in the diagram. The interface on the LA router connected toward the 10 1.5.0/24 network is faulty and is going up and down, which affects the entire routing domain. Which routing technique can the network administrator use so that the rest of the network is not affected by the flapping issue?

- A. The LA administrator should use route aggregation to summarize the 10 1 4.0/24, 10 1 5 0/24, 10.1.6.0/24, and 10 1 7 0/24 networks toward Chicago
- B. The LA administrator should use route dampening for the 10.1.5 0/24 network so that it does not get propagated when it flaps up and down.
- C. The LA administrator should use route filtering to block the 10.1.5.0/24 network from getting propagated toward Chicago and New York.
- D. The Chicago administrator should use route filtering to block the 10.1.5.0/24 network from coming in from the LA router.

Answer: B

NEW QUESTION 219

Company XYZ was not satisfied with the reconvergence time OSPF is taking. BFD was implemented to try to reduce the reconvergence time, but the network is still experiencing delays when having to reconverge. Which technology will improve the design?

- A. OSPF fast hellos
- B. BFD echo
- C. Change the protocol to BGP
- D. Change the OSPF hello and dead intervals

Answer: B

NEW QUESTION 223

A business customer deploys workloads in the public cloud. Now the customer network faces governance issues with the flow of IT traffic and must ensure the

security of data and intellectual property. Which action helps to identify the issue for further resolution?

- A. Set up a secure tunnel from customer routers to ensure that traffic is protected as it travels to the cloud service providers.
- B. Send IPFIX telemetry data from customer routers to a centralized collector to identify traffic to cloud service providers
- C. Build a zone-based firewall policy on Internet edge firewalls that collects statistics on traffic sent to cloud service providers
- D. Apply workload policies that dictate the security requirements to the workloads that are placed in the cloud.

Answer: B

NEW QUESTION 226

During evaluation of migrating current on premises infrastructure to add cloud-based infrastructure, a network planning team must meet three core requirements as they make recommendations on which cloud strategy to adopt going forward

- Technology is changing rapidly, therefore the enterprise must be open to adopting new ways of doing things, and be ready to invest CapEx-funds in the next three years
- Network bandwidth capacity requirements are dynamic and are expected to change over the next year
- If new technologies are to be introduced, operational expenses must be kept at a minimum.

Which cloud strategy meets these requirements?

- A. private
- B. hybrid
- C. public
- D. multicloud

Answer: D

NEW QUESTION 227

Hybrid cloud computing allows organizations to like advantage of public and private cloud models Which best practice should organizations follow to ensure data security in the private cloud?

- A. Use standard protocols for data transmission over the network.
- B. Encrypt data when it is at rest and in motion
- C. Communicate all data security risks to customers and end users.
- D. Use standard network protocols for data communication between unsecured network connections.

Answer: B

NEW QUESTION 231

Company XYZ is designing their network using the three-layer hierarchical model. At which layer must the QoS design classify or mark the traffic?

- A. access
- B. core
- C. collapsed core
- D. distribution

Answer: A

NEW QUESTION 235

Company XYZ, a global content provider, owns data centers on different continents. Their data center design involves a standard three-layer design with a Layer 3-only core. HSRP is used as the FHRP. They require VLAN extension across access switches in all data centers, and they plan to purchase a Layer 2 interconnection between two of their data centers in Europe. In the absence of other business or technical constraints, which termination point is optimal for the Layer 2 interconnection?

- A. at the core layer, to offer the possibility to isolate STP domains
- B. at the aggregation layer because it is the Layer 2 to Layer 3 demarcation point
- C. at the access layer because the STP root bridge does not need to align with the HSRP active node.
- D. at the core layer because all external connections must terminate there for security reasons

Answer: B

NEW QUESTION 237

Which action must be taken before new VoIP systems are implemented on a network to ensure that the network is ready to handle the traffic?

- A. Evaluate bandwidth utilization and connection quality
- B. Enable special requirements such as direct DID lines on pickup
- C. Make recommendations to limit the size of the half-open session table on routers
- D. Check if anomaly detection is enabled for SIP and H.323 on Layer 3 devices

Answer: B

NEW QUESTION 242

The network team in XYZ Corp wants to modernize their infrastructure and is evaluating an implementation and migration plan to allow integration MPLS-based, Layer 2 Ethernet services managed by a service provider to connect branches and remote offices. To decrease OpEx and improve response times when network components fail, XYZ Corp decided to acquire and deploy new routers. The network currently is operated over E1 leased lines (2 Mbps) with a managed CE service provided by the telco.

Drag and drop the implementation steps from the left onto the corresponding targets on the right in the correct order.

Activation of the MPLS-based L2VPN service.	Step 1
Monitor performance of the Ethernet service for a predefined period of time.	Step 2
Decomission E1 leased line.	Step 3
Deployment of new branch routers.	Step 4
Test and validation of SLA parameters in the L2VPN.	Step 5
Migrate E1 to the new Ethernet service.	Step 6

- A. Mastered
- B. Not Mastered

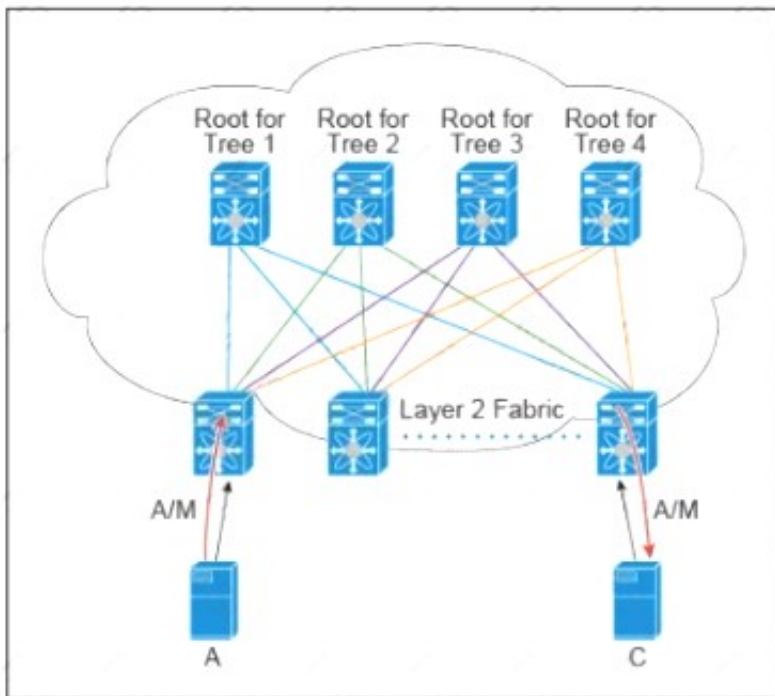
Answer: A

Explanation:

Table Description automatically generated

NEW QUESTION 246

Refer to the exhibit.



There are multiple trees in the Cisco FabricPath All switches in the Layer 2 fabric share the same view of each tree. Which two concepts describe how the multicast traffic is load-balanced across this topology? (Choose two)

- A. A specific (S,G) traffic is not load-balanced
- B. All trees are utilized at the same level of the traffic rate
- C. Every leaf node assigns the specific (S,G) to the same tree.
- D. A specific (S,G) multicast traffic is load-balanced across all trees due to better link utilization efficiency.
- E. The multicast traffic is generally load-balanced across all trees

Answer: BD

NEW QUESTION 250

You want to mitigate failures that are caused by STP loops that occur before UDLD detects the failure or that are caused by a device that is no longer sending BPDUs. Which mechanism do you use along with UDLD?

- A. Root guard
- B. BPDU guard
- C. Loop guard
- D. BPDU filtering

Answer: C

NEW QUESTION 252

An existing wireless network was designed to support data traffic only. You must now install context Aware services for location tracking changes must be applied to the existing wireless network to increase the location accuracy? (Chose two)

- A. Add access points along the perimeter of the coverage area.
- B. Increase the access point density to create an average inter-access point distance of less than 40 feet or 12.2 meters
- C. Use directional antennas to provide more cell overlapping
- D. Install additional access points in monitor mode where the co-channel interference would otherwise be affected
- E. Fine tune the radio configuration of the access point to have a higher average transmission power to achieve better coverage

Answer: BE

NEW QUESTION 253

Your company wants to deploy a new data center infrastructure Based on the requirements you have chosen VXLAN as encapsulation technology The customer is concerned about miss-configuration of Layer 2 devices and DC wide outages caused by Layer 2 loops What do you answer?

- A. VXLAN offers native loop avoidance mechanism
- B. Storm Control should be enabled on all ports
- C. VPC+ could prevent L2 loop on access ports
- D. BPDU Guard should be enabled on all VTEP access ports

Answer: D

NEW QUESTION 257

You are designing an Out of Band Cisco Network Admission Control. Layer 3 Real-IP Gateway deployment for a customer Which VLAN must be trunked back to the Clean Access Server from the access switch?

- A. authentication VLAN
- B. user VLAN
- C. untrusted VLAN
- D. management VLAN

Answer: D

NEW QUESTION 260

Which two statements describe the functionality of OSPF packet-pacing timers? (Choose two) The group-pacing timer controls the interval that is used for group and individual LSA refreshment

- A. OSPF flood-pacing timers allow dynamic control of the OSPF transmission queue size
- B. OSPF retransmission-pacing timers allow control of interpacket spacing between consecutive link-state update packets in the OSPF retransmission queue.
- C. OSPF retransmission-pacing timers allow control of packet interleaving between nonconsecutive link-state update packets in the OSPF retransmission queue.
- D. OSPF flood-pacing timers allow control of interpacket spacing between consecutive link-state update packets in the OSPF transmission queue

Answer: BD

NEW QUESTION 265

An enterprise requires MPLS connected branches to access cloud-based Microsoft 365 services over an SD-WAN solution. Internet access is available only at dual regional hub sites that are connected to the MPLS network. Which connectivity method provides an optimum access method to the cloud-based services if one ISP suffers loss or latency?

- A. Cloud onRamp gateway site
- B. Cloud onRamp SWG
- C. Cloud onRamp
- D. Cloud onRamp SaaS

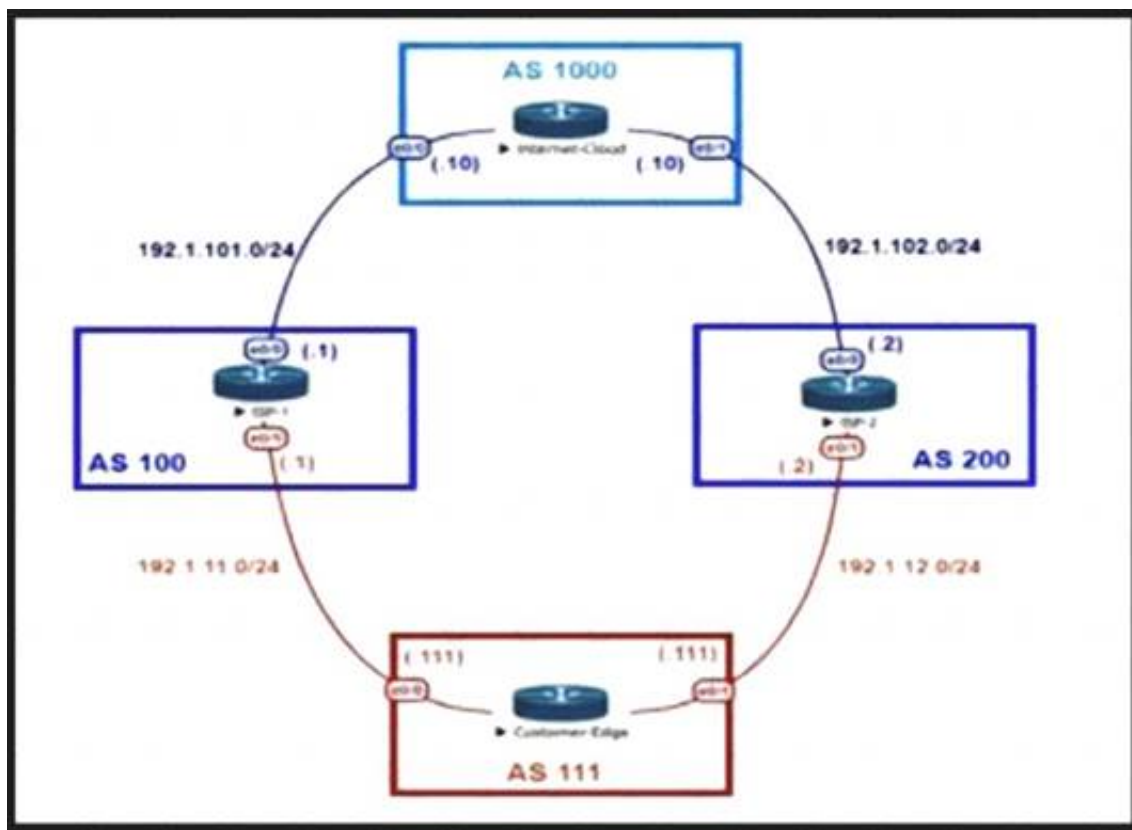
Answer: D

Explanation:

<https://www.cisco.com/c/en/us/td/docs/routers/sdwan/configuration/cloudonramp/vedge-20-x/cloud-onramp-boo>

NEW QUESTION 270

Refer to the exhibit.



An engineer is designing the traffic flow for AS 111. Traffic from AS 111 should be preferred via AS 100 for all external routes. A method must be used that only affects AS 111. Which BGP attributes are best suited to control outbound traffic?

- A. community
- B. MED
- C. local preference
- D. As path

Answer: C

NEW QUESTION 274

What is a description of a control plane action?

- A. de-encapsulating and re-encapsulating a packet in a data-link frame
- B. matching the destination MAC address of an Ethernet frame to the MAC address table
- C. matching the destination IP address of an IP packet to the IP routing table
- D. hosts locating routers that reside on attached links using the IPv6 Neighbor Discover Protocol

Answer: D

NEW QUESTION 277

SDWAN networks capitalize the usage of broadband Internet links over traditional MPLS links to offer more cost benefits to enterprise customers. However, due to the insecure nature of the public Internet, it is mandatory to use encryption of traffic between any two SDWAN edge devices installed behind NAT gateways. Which overlay method can provide optimal transport over unreliable underlay networks that are behind NAT gateways?

- A. TLS
- B. DTLS
- C. IPsec
- D. GRE

Answer: C

NEW QUESTION 280

Which service abstracts away the management of the operating system, middleware, and runtime?

- A. IaaS
- B. PaaS
- C. SaaS
- D. BMaaS

Answer: B

Explanation:

IaaS, PaaS, and SaaS each offer a progressive layer of abstraction after that. IaaS abstracts away the physical compute, network, storage, and the technology needed to virtualize those resources. PaaS goes a step further and abstracts away the management of the operating system, middleware, and runtime.

<https://www.ibm.com/topics/iaas#:~:text=IaaS%20abstracts%20away%20the%20physical,system%2C%20m>

NEW QUESTION 281

SD-WAN can be used to provide secure connectivity to remote offices, branch offices, campus networks, data centers, and the cloud over any type of IP-based underlay transport network. Which two statements describe SD WAN solutions? (Choose two.)

- A. SD-WAN networks are inherently protected against slow performance.
- B. Control and data forwarding planes are kept separate.
- C. Improved operational efficiencies result in cost savings.
- D. Solutions include centralized orchestration, control, and zero-touch provisioning.

E. Solutions allow for variations of commodity and specialized switching hardware.

Answer: BD

NEW QUESTION 283

An enterprise plans to evolve from a traditional WAN network to a software-defined WAN network. The existing devices have limited capability when it comes to virtualization. As the migration is carried out, enterprise applications and services must not experience any traffic impact. Which implementation plan can be used to accommodate this during the migration phase?

- A. Deploy controllers, deploy SD-WAN edge router
- B. In the data center, and migrate branch sites.
- C. Migrate data center WAN routers, migrate branch sites, and deploy SD-WAN edge routers.
- D. Migrate branch sites, migrate data center WAN routers, and deploy controllers.
- E. Deploy SD-WAN edge routers in the data center, deploy controllers, and migrate branch sites

Answer: A

NEW QUESTION 286

Company XYZ is redesigning their QoS policy. Some of the applications used by the company are real-time applications. The QoS design must give these applications preference in terms of transmission. Which QoS strategy can be used to fulfill the requirement?

- A. weighted fair queuing
- B. weighted random early detection
- C. low-latency queuing
- D. first-in first-out

Answer: C

NEW QUESTION 291

Which feature must be part of the network design to wait a predetermined amount of time before notifying the routing protocol of a change in the path in the network?

- A. Transmit delay
- B. Throttle timer
- C. SPF hold time
- D. Interface dampening

Answer: B

NEW QUESTION 294

Drag and drop the multicast protocols from the left onto the current design situation on the right.

PIM-SM, SSM, BIDIR	IPv4 Group Management
PIM-DM, PIM-SM, SSM, BIDIR	IPv4 Forwarding
IGMP	IPv4 Interdomain Source Discovery
MSDP	IPv6 Group Management
MLD	IPv6 Forwarding

- A. Mastered
- B. Not Mastered

Answer: A

Explanation:

A picture containing table Description automatically generated

IPv4:

Host Registration - IGMP

Router Registration - PIM-DM, PIM-SM, SSM, BIDIR Inter-Domain Source Discovery - MSDP

IPv6:

Host Registration - MLD

Router Registration - PIM-SM, SSM, BIDIR

NEW QUESTION 299

What best describes the difference between Automation and Orchestration?

- A. Automation refers to an automatic process for completing a single task and Orchestration refers to assembling and coordinating a set of tasks and conditions.

- B. Automation describes a hands-off configuration process while Orchestration refers to sets of automation tasks that require the network administrator to coordinate
- C. Automation refers to an automatic process for completing multiple tasks with conditions and Orchestration refers to executing tasks in parallel.
- D. Automation refers to scripting languages (Pytho
- E. Ansible etc.) and Orchestration refers to commercial products that control configuration deployment

Answer: A

NEW QUESTION 302

You are tasked to design a QoS policy for a service provider so they can include it in the design of their MPLS core network. If the design must support an MPLS network with six classes, and CEs will be managed by the service provider, which QoS policy should be recommended?

- A. map IP CoS bits into the IP Precedence field
- B. map flow-label bits into the Exp field
- C. map IP precedence bits into the DSCP field
- D. map DSCP bits into the Exp field

Answer: D

NEW QUESTION 305

Company XYZ is running OSPF in their network. They have merged with another company that is running EIGRP as the routing protocol. Company XYZ now needs the two domains to talk to each other with redundancy, while maintaining a loop free environment. The solution must scale when new networks are added into the network in the near future. Which technology can be used to meet these requirements?

- A. multipoint route-redistribution with route filtering using ACLs
- B. DUMP multipoint route-redistribution with route filtering using route tags
- C. DUMPS single point route-redistribution with route filtering using route tags
- D. DUMPS single point route-redistribution with route filtering using ACLs

Answer: B

NEW QUESTION 306

How can EIGRP topologies be designed to converge as fast as possible in the event of a point-to-point link failure?

- A. Limit the query domain by use of distribute lists.
- B. Build neighbor adjacencies in a triangulated fashion.
- C. Build neighbor adjacencies in squared fashion.
- D. Limit the query domain by use of summarization.
- E. Limit the query domain by use of default routes.

Answer: D

NEW QUESTION 309

Company XYZ is migrating their existing network to IPv6 and they must plan for Layer 2 and Layer 3 devices. Some of the access layer switches do not support IPv6, however, core and distribution switches fully support unicast and multicast routing. The company wants to minimize cost of the migration. Which migration strategy should be used in the design?

- A. The access layer switches must support IGMP snooping at a minimum.
- B. Any switches that do not support IGM snooping must be replaced.
- C. Upgrade the nonsupporting switches. Otherwise, it will cause an issue with the migration.
- D. Layer 2 switches will not affect the implementation of IPv6. They can be included in the design in their current state.
- E. The access layer switches must support DHCPv6. Any switches that do not support DHCPv6 must be replaced.

Answer: C

NEW QUESTION 311

Which development model is closely associated with traditional project management?

- A. static model
- B. Agile model
- C. evolutionary delivery model
- D. lifecycle model

Answer: D

NEW QUESTION 314

You are tasked with the design of a high available network. Which two features provide fail closed environments? (Choose two.)

- A. EIGRP
- B. RPVST+
- C. MST
- D. L2MP

Answer: AB

NEW QUESTION 319

A network security team uses a purpose-built tool to actively monitor the campus network, applications, and user activity. The team also analyzes enterprise telemetry data from IPFIX data records that are received from devices in the campus network. Which action can be taken based on the augmented data?

- A. reduction in time to detect and respond to threats
- B. integration with an incident response plan
- C. adoption and improvement of threat-detection response
- D. asset identification and grouping decisions

Answer: A

NEW QUESTION 321

The General Bank of Greece plans to upgrade its legacy end-of-life WAN network with a new flexible, manageable, and scalable solution. The main requirements are ZTP support, end-to-end encryption application awareness and segmentation. The CTO states that the main goal of the bank is CAPEX reduction. Which WAN technology should be used for the solution?

- A. SD-branch
- B. DMVPN with PfR
- C. managed SD-WAN
- D. SD-WAN

Answer: C

NEW QUESTION 324

Which undesired effect of increasing the jitter compensation buffer is true?

- A. The overall transport jitter decreases and quality improves.
- B. The overall transport jitter increases and quality issues can occur.
- C. The overall transport delay increases and quality issues can occur.
- D. The overall transport delay decreases and quality improves.

Answer: C

NEW QUESTION 328

.....

Thank You for Trying Our Product

* 100% Pass or Money Back

All our products come with a 90-day Money Back Guarantee.

* One year free update

You can enjoy free update one year. 24x7 online support.

* Trusted by Millions

We currently serve more than 30,000,000 customers.

* Shop Securely

All transactions are protected by VeriSign!

100% Pass Your 400-007 Exam with Our Prep Materials Via below:

<https://www.certleader.com/400-007-dumps.html>