

Adobe

Exam Questions AD0-E117

Adobe Experience Manager Architect Master



NEW QUESTION 1

An Architect needs to design a deployment process without downtime for end users. The system architecture contains an AEM author, two AEM publishers, two publish Dispatchers, and a centrally managed load balancer. The publishers serve some content that cannot be cached. Which two actions should the Architect take to meet these requirements? (Choose two.)

- A. Connect each publish Dispatcher to one AEM publish
- B. Use each publish Dispatcher to load-balance to both AEM publishers
- C. Deploy software packages by replicating them from author to publishers
- D. Configure the centrally managed load balancer to connect directly to the AEM publisher that is not being dedKyed to
- E. Deploy software package to AEM Publishers one by one

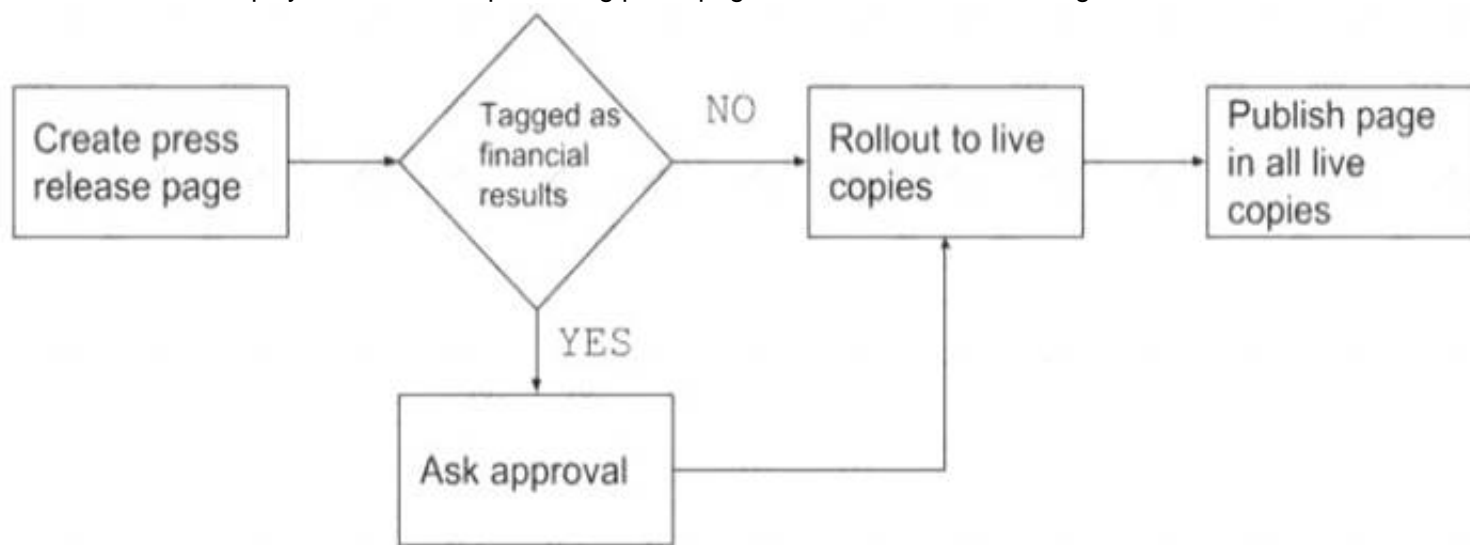
Answer: BE

Explanation:

“using each publish Dispatcher to load-balance to both AEM publishers can provide high availability and fault tolerance. Deploying software packages to AEM Publishers one by one can avoid downtime for end users”.

NEW QUESTION 2

A customer wants to simplify and automate publishing press pages and defines the following flows:



What should the Architect recommend?

- A. Create a custom workflow
- B. Advise the customer to use Launches
- C. Implement a Sling event listener that triggers on page creation
- D. Configure MSM with the "Activate on Blueprint activation" option

Answer: B

Explanation:

Advise the customer to use Launches . According to Adobe Experience Manager documentatio1n, launches in AEM Sites provide a way to create, author, and review web site content for future release. Launches can also be synchronized with the production web site and activated at a scheduled time1

NEW QUESTION 3

A customer wants to migrate their AEM environment from an on-premise infrastructure to a public cloud to improve performance. The customer currently hosts many assets (images, videos, documents) in the DAM. Approximately 10 business users frequently upload new assets and update existing assets. Editors then use these assets on the sites.

What should an Architect do as part of this migration?

- A. Move to a shared datastore and enable binary less replication
- B. Set up Connected Assets to share the DAM assets in the sites
- C. Set up a horizontally scalable AEM environment on MongoDB
- D. Run online revision cleanup before moving to the new storage format

Answer: D

Explanation:

“running online revision cleanup before moving to the new storage format can reduce the size of the repository and improve performance”.

NEW QUESTION 4

An Architect is performing infrastructure and capacity planning for Author servers for a customer using AEM 6.5. Which two factors would lead the Architect to pick a multi-author instance architecture setup? (Choose two.)

- A. Website Traffic handled by servers
- B. Fail safeness of the servers
- C. Number of Parallel Authors
- D. Cache Efficiency on the dispatcher
- E. Types of actions performed by Authors

Answer: BC

Explanation:

“a multi-author instance architecture setup provides failover and load balancing for author servers. It also allows for scaling up the number of parallel authors who can work on the same content without affecting performance”.

NEW QUESTION 5

A customer is about to go live with a new website on AEM on prem. The DNS (www.domam.com) already points to the load balancer of the AEM environment and final sanity checks are being performed. The website was tested in lower environments without SSL. On production, the website is served over https. During sanity testing, all requests result in a 404.

While investigating this issue, an Architect determines the following:

- The requests land on port 443 on the load balancer where SSL is terminated and an HTTP header X-Forwarded-Proto is set
- The website Sling Mapping is created beneath /etc/map/http/www.domain.com.80
- The URLs on the website are externalized with http in the absolute links

Which two actions should the Architect take to resolve this problem? (Choose two.)

- A. Ensure the Sling Mapping exist at /etc/map/https/www.domain.com.80
- B. Ensure the Sling Mapping exist at /etc/map/httpj)mwp<.domain.com.443Configure the Adobe Granite SSL Connector Factory with the correct SSL port
- C. Configure Apache Felix Http Service SSL Filter to use the correct SSL forward header
- D. Ensure the Sling Mapping exist at /etc/map/https/www.domain.com.443

Answer: BC

Explanation:

“the Sling Mapping should match the protocol and port of the incoming request, which in this case is https and 443. The Apache Felix Http Service SSL Filter should be configured to use the X-Forwarded-Proto header to detect if the request is secure or not”.

NEW QUESTION 6

A media company surveys the end users of their AEM Sites website. The survey identifies that it is difficult to locate content on the site due to lack of relevancy and slow performance when navigating through the large volume of content.

To address both issues, the business team suggests integrating an innovative taxonomy product to the company's AEM implementation. The product is new on the market and the development team has no experience with the technology.

Which two steps should an Architect recommend to evaluate this new feature? (Choose two.)

- A. Develop the integration as proof of concept with sample content
- B. Test usability of the feature with selected business users
- C. Develop the integration and deploy it to 50% of the production AEM instances
- D. Develop the integration as proof of concept with full production content
- E. Test usability of the feature with selected end users

Answer: AE

Explanation:

“developing a proof of concept with sample content allows for testing the feasibility and performance of the integration without affecting production data. Testing usability with selected end users allows for validating the relevancy and user satisfaction of the feature”.

NEW QUESTION 7

A client is in the discovery process for building a React native app, which is a single codebase that runs natively on iOS and Android. The goal is to reduce development costs. The client wants to reduce content creation costs in the new react Native app by reusing as much of the marketing content already published in their AEM instance.

What should the Architect recommend to meet this requirement?

- A. Experience Fragments
- B. OSGi Bundles
- C. Sling Resource Resolution
- D. Content Fragments

Answer: A

Explanation:

“Experience Fragments are reusable pieces of content that can be delivered to any channel, including React native apps. They allow for reusing marketing content already published in AEM”.

NEW QUESTION 8

A user is part of the Employees LDAP group synchronized with AEM. The same user is added to the authors group in AEM. The user is then removed from the Employees group on the LDAP server.

What is the result during the next synchronization with AEM?

- A. The user is removed from both the Employees and the AEM authors groups
- B. The user is removed from the authors group but not the Employees group in AEM
- C. The user is removed from the Employees group but not the authors group in AEM
- D. The user is not removed from either the Employees and the AEM authors groups

Answer: A

Explanation:

“if a user is removed from an LDAP group that has been synchronized with AEM, then that user will be removed from all AEM groups that they are a member of”.

NEW QUESTION 9

A large retail customer is building their ecommerce platform on AEM. Several third-party vendors sell products through their site. Those vendors need to review and verify the content close to production before the content goes live and the customer wants to provide them a restricted environment. Which approach should the Architect recommend?

- A. Give third-party vendors access to the Author Server
- B. Use the Preview Capabilities of AEM Author Server
- C. Export content as PDF and share with the vendors
- D. Add a Publish (preview) Server and provide access

Answer: D

Explanation:

According to Adobe Experience Manager documentation¹, a publish (preview) server is a publish instance that is used for previewing content before it goes live on the production server. This can be useful for verifying content with third-party vendors or other stakeholders who need restricted access.

NEW QUESTION 10

A customer's photo gallery site uses query parameters to filter photo search results. The site experiences high AEM Publish server load when users filter photos on the site. The customer would like to identify the cause of this issue. What should the Architect investigate first?

- A. ignoreUrlParams configuration in dispatcher.any
- B. Dispatcher load balancing configuration
- C. Cache-Control Headers in dispatcher.any
- D. Volume of assets being loaded at a time

Answer: C

Explanation:

“Cache-Control Headers in dispatcher.any control how long the dispatcher caches responses from the publish server. If these headers are not configured properly, the dispatcher may cache stale or dynamic content, resulting in high server load and poor performance”.

NEW QUESTION 10

During an optimization session, a client using AEM 6.5 mentions that they face challenges with their AEM Author setup. The client has significant repository growth and can see an increased amount of TAR files in the segmentstore on disk. When editors are working, they see that workflows take up more time. The purging of workflows works as expected. Which two optimizations should an Architect suggest to take into and further investigate? (Choose two.)

- A. Leverage workflow offloading for all workflows
- B. Configure the Maximum Parallel Jobs
- C. Increase the maxFileSize of the TAR segmentstore
- D. Leverage Transient Workflows where possible
- E. Execute an offline tar compaction twice a day

Answer: AD

Explanation:

Leverage workflow offloading for all workflows and Leverage Transient Workflows where possible¹²³

. According to Adobe Experience Manager documentatio²ⁿ, workflow offloading is a technique that distributes processing tasks among AEM instances in a topology. This can improve performance and scalability of AEM author instances by using dedicated instances for executing workflows. Transient workflows are workflows that do not persist any data or history and are automatically purged after completion³. This can reduce repository growth and improve workflow efficiency.

NEW QUESTION 12

A company is implementing a new e-commerce site that is expected to get seasonal and flash-sale induced traffic peaks from all over the world. It is projected that a minute of downtime could cause excessive lost revenue. The company management wants to keep resource utilization to optimal levels without experiencing degradation to avoid introducing bugs in the system.

The Architect needs to choose between AEM 6.5 and AEM as Cloud Service.

What are the two most critical non-functional requirements the Architect must consider? (Choose two.)

- A. Scalability
- B. Availability
- C. Reliability
- D. Maintainability
- E. Usability

Answer: AB

Explanation:

According to Adobe Experience Manager documentation³, AEM as Cloud Service provides scalable and resilient architecture that can handle traffic peaks and ensure high availability. AEM 6.5 requires manual scaling and backup strategies to achieve the same level of performance and reliability.

NEW QUESTION 17

AEM as a cloud service introduces major changes in the architecture by using containers. Which key architectural change was necessary to allow this to occur?

- A. Using Adobe 10 for asset ingestion and processing, storing it on a separate blob and providing AEM with metadata
- B. Using sling content distribution as the replication mechanism
- C. Using MongoDB for Author environment
- D. Isolating /app and /libs from the content, configurations and state mgmt.

Answer: D

Explanation:

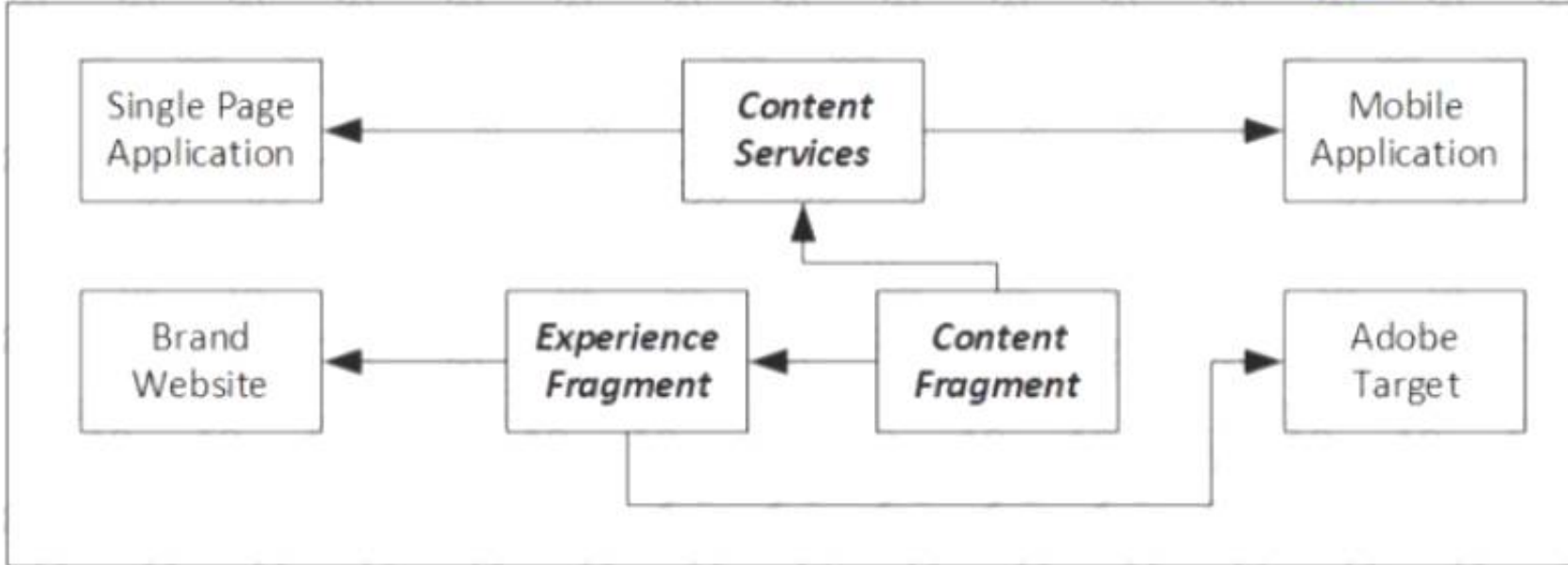
“isolating /app and /libs from the content, configurations and state management allows AEM as a Cloud Service to use containers for scalability and resilience”.

NEW QUESTION 18

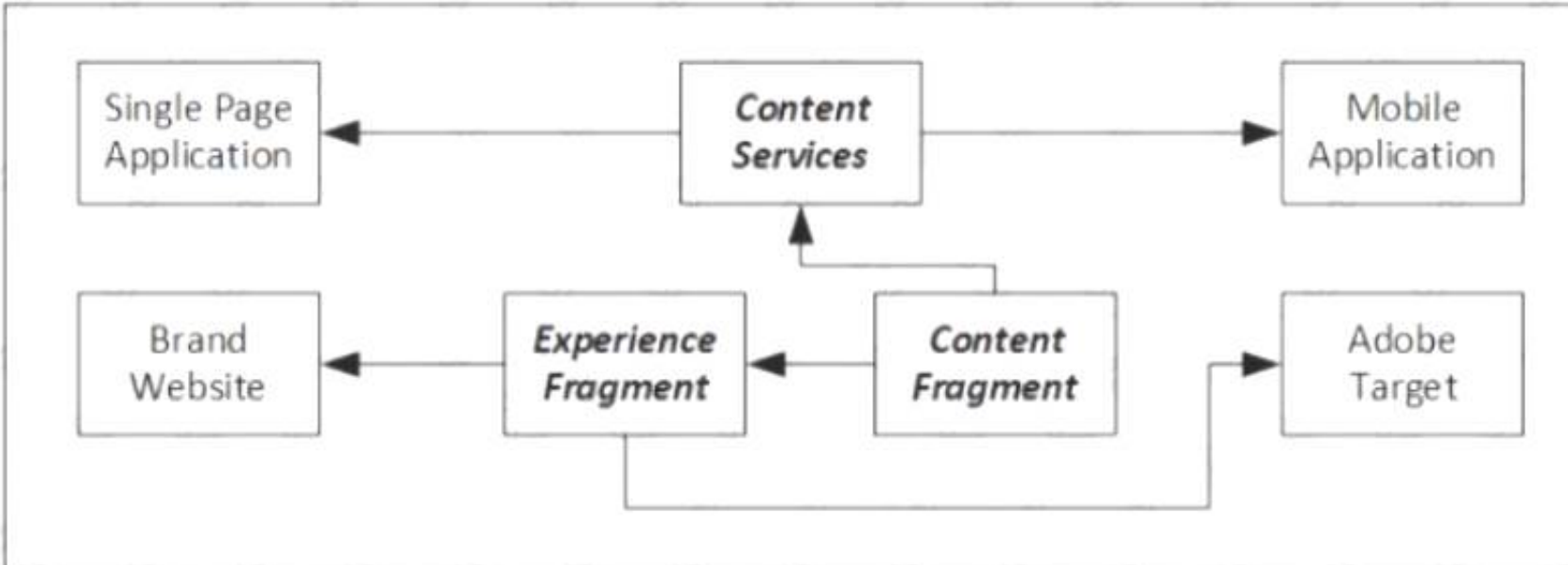
A media company wants to use AEM as content hub for multiple customer touch points:

- Brand-specific marketing websites hosted on AEM Sites
- Single Page Applications using headless content
- Native mobile applications
- Content offers in Adobe Target

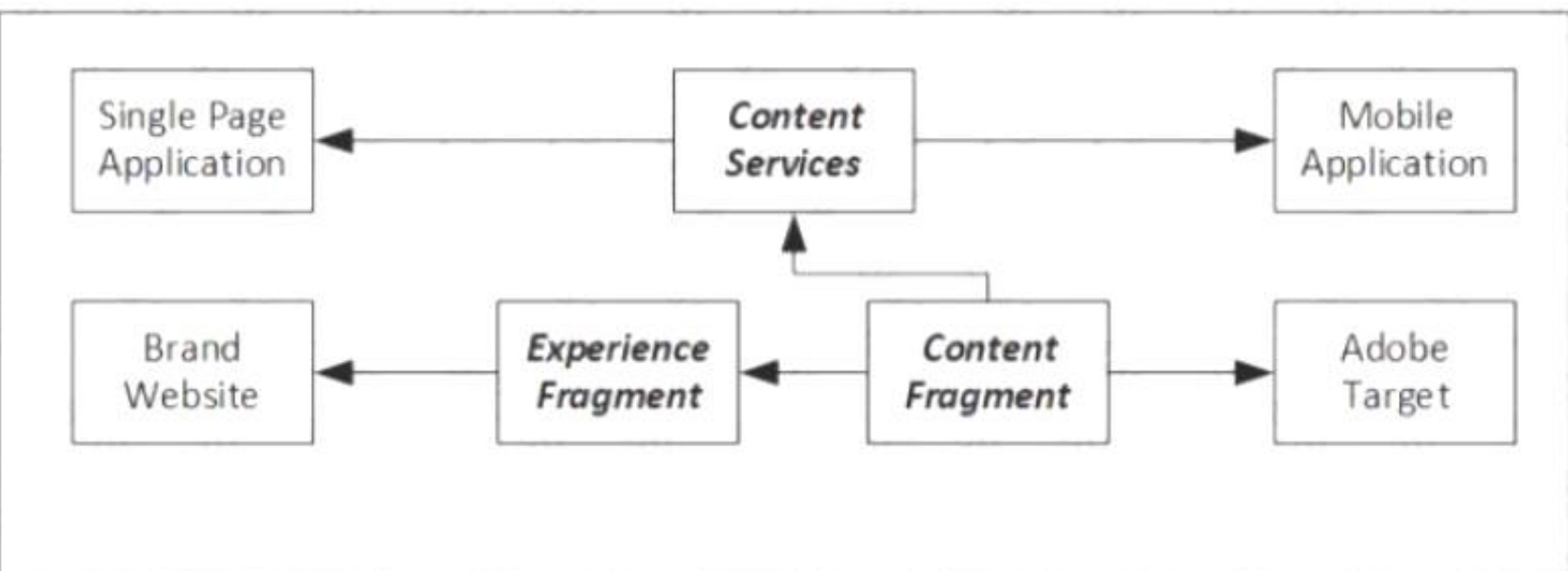
The company wants to manage its content efficiently with its small editor staff. Text should be entered and reviewed only once, then reused for all touch points. How should an Architect incorporate these requirements into a solution that leverages AEM Sites features? A)



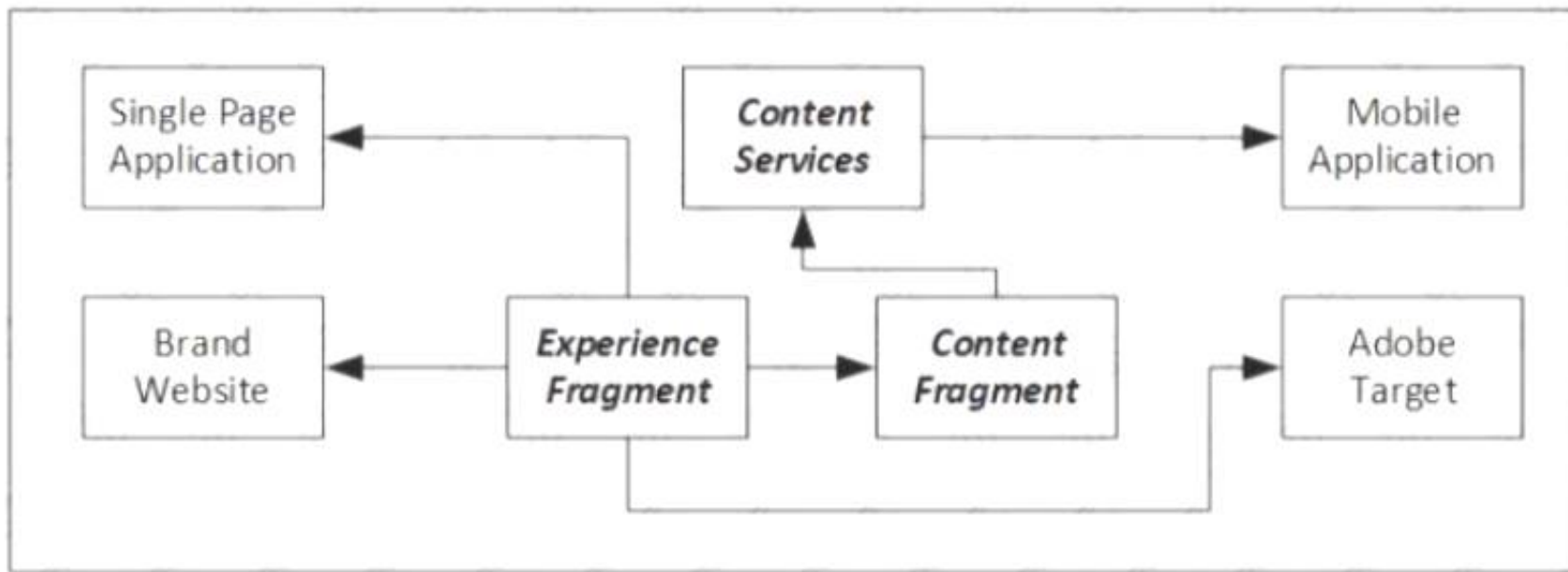
B)



C)



D)



- A. Option A
- B. Option B
- C. Option C
- D. Option D

Answer: B

Explanation:

AEM content fragments are pure content with structured data that can be used to describe and manage content for multiple channels¹²³. Content fragments can be exposed as JSON via AEM Content Services and API Pages for headless delivery⁴. Content fragments can also be used in AEM Sites pages with different layouts and designs using the style system⁵. Option B is the only diagram that shows how content fragments can be created and reused for all touch points using AEM Sites features.

NEW QUESTION 20

During development the AEM Publisher server keeps crashing randomly. The deployment included a new static FAQ component that was used in the websites Contact Us page. An Architect investigates to find the root cause for the random failures, and notices the following parameters:

- The server slows down when requests are sent to the Contact us page
- The number of requests to the page were very few
- Heap dump shows a large number of instances of the FAQ component What is likely causing this issue?

- A. The page was not cached in the Dispatcher.
- B. The component triggers a traversal query.
- C. The JVM garbage collection is not running.
- D. The component has a cyclic dependency to itself

Answer: D

Explanation:

According to Adobe Experience Manager documentation³, a cyclic dependency occurs when a component includes itself either directly or indirectly through another component. This can cause an infinite loop of rendering and consume excessive memory resources, leading to server crashes. To avoid this issue, components should not include themselves or other components that include them

NEW QUESTION 22

A client's site does not show the latest page content for some site visitors. The client has two data centers with each configured with a Dispatcher connected to two Publish machines. The site load issue only occurs intermittently for visitors from one of the data centers.

Which step should the Architect take to resolve the issue?

- A. Disable caching on all impacted data centers Dispatchers to force the Publish machines to serve the page content
- B. Check the Publish instance(s) attached to the Dispatcher associated to the impacted data center
- C. Check the SSL certificate on the impacted data center's load balance.
- D. Review the log files on the Author instances to determine if there are any template errors

Answer: B

Explanation:

"checking the Publish instance(s) attached to the Dispatcher associated to the impacted data center can help identify if there are any replication or caching issues that prevent the latest page content from being served"

NEW QUESTION 23

A client wants to change how they publish their content. Refer to the following client business requirements:

- The client has a seasonal business that has significant content changes across their site that need to be rolled out at once based on the season change over date.
- The content authors need to be able to work one season in advance of publish dates to ensure that all changes can be completed on time.
- The content authors need a way to indicate that all the seasonal changes are ready. If the content changes are not completed, then the pages should not get published.
- The content authors need the ability to modify the current live pages without rolling back changes for a future content rollout.

What approach should the Architect recommend?

- A. Use the Versioning feature when editing a page to toggle and publish changes when ready.
- B. Use the Manage Publication with scheduling value set to the season change over date when changes are completed.

- C. Create a Project inside of AEM for each new season and create a task for notifying that changes are completed.
- D. Use Launches inside of AEM for each new season and use the production ready flag to show changes are completed.

Answer: D

Explanation:

“using Launches inside of AEM for each new season can allow content authors to work on future content changes without affecting the current live pages and use the production ready flag to indicate when changes are completed”.

NEW QUESTION 26

A customer has an international presence and a strong brand image. The customer considers the exceptional quality images used for both print and on the website to be essential for its business, The customer uses AEM 6.5 managed services with a configuration of 2 dispatchers, 2 publishers, and 1 author. The original images can weigh up to 500Mb with videos weighing even more. Renditions are generated after files are uploaded to AEM DAM by the Design team so the Authoring team can use them on the website. The teams report issues with platform stability and slowness. Visitors report that images look pixelated on some screens and pages are very slow to load. Which two actions should the Architect take to resolve these issues? (Choose two.)

- A. Train the design team to upload smaller assets and save the originals elsewhere
- B. Allocate more memory to ImageMagick and FFmpeg
- C. Optimize renditions for the different viewports used by the visitors
- D. Split AEM Assets and Sites in two different stacks and use Connected Assets
- E. Add more dispatchers and publishers to the AEM configuration

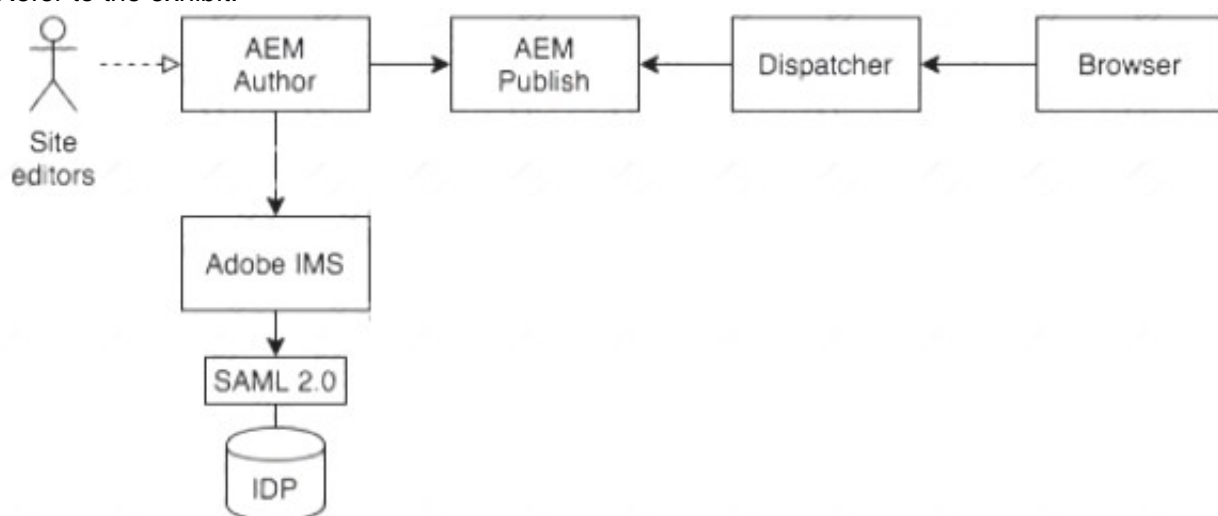
Answer: CD

Explanation:

“optimizing renditions for different viewports can improve the image quality and page load speed for visitors. Splitting AEM Assets and Sites in two different stacks and using Connected Assets can reduce the load on the author server and improve platform stability”.

NEW QUESTION 31

Refer to the exhibit.



A customer has SSO on its AEM Author environment using Adobe IMS, which is integrated with the customer's IDP using SAML. The customer plans to roll out a new secured website on AEM where SSO authentication is required for end users. The end user accounts are also managed in the customer's existing IDP. How should the Architect set up the authentication for the website?

- A. Integrate AEM Publisher using SAML with Adobe IMS
- B. Set up CUG and use User Synchronisation from Author to Publisher
- C. Integrate AEM Publisher using SAML directly with the IDP
- D. Integrate AEM Publisher using OAuth with Adobe IMS

Answer: C

Explanation:

SAML is a common and standard SSO handler that allows a user to access multiple systems after providing authentication credentials once. AEM ships with a SAML 2.0 Authentication Handler that supports signing and encryption of messages, automatic creation of users, and syncing groups to existing ones in AEM3. By integrating AEM Publisher using SAML directly with the IDP, the Architect can leverage the existing user accounts and authentication mechanism for the end users of the secured website.

NEW QUESTION 35

A customer is migrating from their On-Premises AEM 6.4 instances to AEM as a Cloud Service. Next to the required code refactoring, a content migration of approximately 100,000 pages needs to be performed. The customer wants the content freeze period to be limited so that editors can continue to do content actions as long as possible. Which two recommendations should the Architect make for the migration of the content pages? (Choose two.)

- A. Migrate the content using Lazy Content Migration approach
- B. Upscale the memory of the On-Premise AEM instance
- C. Migrate content deltas using a query-based packaging tool
- D. Ensure sufficient storage space on the On-Premise AEM instance
- E. Migrate the content using the Content Transfer Tool

Answer: AE

Explanation:

“migrating the content using Lazy Content Migration approach can reduce the content freeze period by only migrating referenced content” and “migrating the

content using the Content Transfer Tool can automate and validate the migration process”.

NEW QUESTION 36

A news agency editor wants to publish news articles to an intermediate Publish (preview) instance for internal review before publishing the article to production Publish instance.

Which two steps should the Architect recommend? (Choose two.)

- A. Create a closed user group (CUG) for editors
- B. Create a reverse replication agent on preview server
- C. Create a separate live copy to preview content
- D. Set up a new replication agent for preview server
- E. Create a custom publish workflow

Answer: CD

Explanation:

Create a separate live copy to preview content and set up a new replication agent for preview server¹

. According to Adobe Experience Manager documentatio⁴n, a live copy is used to create a local copy of content from another site that can be modified independently. A replication agent is used to publish content from an author instance to a publish instance. Creating a reverse replication agent on preview server (B) is not necessary as reverse replication is not supported by AEM as a Cloud Service¹. Creating a custom publish workflow (E) is also not necessary as workflows are handled by AEM Cloud Service automatically¹.

NEW QUESTION 39

.....

Thank You for Trying Our Product

We offer two products:

1st - We have Practice Tests Software with Actual Exam Questions

2nd - Questions and Answers in PDF Format

AD0-E117 Practice Exam Features:

- * AD0-E117 Questions and Answers Updated Frequently
- * AD0-E117 Practice Questions Verified by Expert Senior Certified Staff
- * AD0-E117 Most Realistic Questions that Guarantee you a Pass on Your First Try
- * AD0-E117 Practice Test Questions in Multiple Choice Formats and Updates for 1 Year

100% Actual & Verified — Instant Download, Please Click
[Order The AD0-E117 Practice Test Here](#)