

# Nutanix

## Exam Questions NCP-CI-Azure

Nutanix Certified Professional - Cloud Integration - Azure (NCP-CI-Azure v6.7)



### NEW QUESTION 1

An administrator is deploying a new cluster on Azure and would like to ensure the data is encrypted. Due to cost constraints the deployment will leverage the native local key manager (LKM).

What is the minimal number of nodes needed to support the Nutanix native LKM?

- A. 1
- B. 2
- C. 3
- D. 4

**Answer: C**

#### Explanation:

? Local Key Manager (LKM):The native local key manager in Nutanix requires a minimum number of nodes to function correctly and provide key management services.

? Minimum Node Requirement for LKM:To support the Nutanix native LKM, at least three nodes are needed. This configuration ensures that the key management service can achieve the necessary quorum and redundancy for secure operations.

References:

? Nutanix Data Encryption Documentation

? Nutanix Cluster Configuration Guide

### NEW QUESTION 2

An administrator needs to configure the correct outbound requirement for a successful cluster deployment in Azure.

Which destination must have an outbound rule to meet this requirement?

- A. <https://portal.nutanix.com/>\*
- B. <https://downloads.cloud.nutanix.com/>\*
- C. <https://support.nutanix.com/>\*
- D. <https://nutanix.dev/>\*

**Answer: B**

#### Explanation:

? Outbound Rule Necessity: For successful cluster deployment, certain outbound connections must be allowed to ensure proper download and configuration of resources.

? Critical Destination: "<https://downloads.cloud.nutanix.com/>\*" is a critical endpoint from which the Nutanix software and updates are downloaded during the cluster deployment process.

? Functionality: Ensuring an outbound rule for this destination allows the deployment to fetch necessary files and updates, enabling smooth cluster setup and operation.

? Other Destinations:

? Conclusion: Outbound connectivity to "<https://downloads.cloud.nutanix.com/>\*" is essential for downloading deployment resources.

References:

? Nutanix NC2 on Azure Network Configuration Guide

? Azure Network Security Documentation

### NEW QUESTION 3

An administrator wants to ensure that enough available bandwidth exists for workloads running in an NC2 on Azure cluster environment.

What is the highest number of Flow Gateway VMs that can be deployed within this environment?

- A. 1
- B. 3
- C. 4
- D. 6

**Answer: D**

#### Explanation:

? Flow Gateway VMs: Flow Gateway VMs are used to manage and route network traffic within an NC2 on Azure cluster, ensuring sufficient bandwidth for workloads.

? Scalability: To ensure enough available bandwidth, multiple Flow Gateway VMs can be deployed.

? Maximum Limit: The highest number of Flow Gateway VMs that can be deployed within an NC2 on Azure environment is 6, providing the necessary capacity to handle high traffic volumes and ensure optimal performance.

? Conclusion: Deploying up to 6 Flow Gateway VMs ensures adequate bandwidth for NC2 workloads.

References:

? Nutanix Clusters Networking Guide

? Azure Network Performance Documentation

### NEW QUESTION 4

An administrator is tasked with adding an Azure account to the NC2 console. A requirement is to configure an Azure user that can open, close or extend a support tunnel for the Nutanix Support team.

Which permission must be assigned to the user?

- A. Customer Auditor
- B. Account Administrator
- C. Cluster Administrator
- D. Cluster Auditor

**Answer: B**

**Explanation:**

? Account Administrator Role: This role grants the necessary permissions for managing the Azure account, including the ability to open, close, or extend a support tunnel. These capabilities are crucial for the Nutanix Support team to perform diagnostics and troubleshooting efficiently.

? Permissions Included: The Account Administrator role encompasses broader account management rights, ensuring that the user can interact with various support and operational aspects of the NC2 environment within Azure.

References:

? Azure Role-Based Access Control (RBAC) Documentation

? Nutanix NC2 Support Tunnel Requirements

**NEW QUESTION 5**

Which web interface should be used to most efficiently terminate a Nutanix cloud cluster?

- A. AWS Console
- B. Prism Element Console
- C. NC2 Console
- D. Prism Central Console

**Answer: C**

**Explanation:**

To efficiently terminate a Nutanix cloud cluster, the NC2 (Nutanix Cloud Clusters) Console should be used. The NC2 Console provides the necessary tools and interface specifically designed for managing and terminating Nutanix clusters within cloud environments, ensuring a seamless and efficient process.

References

? Nutanix Cloud Clusters Documentation

**NEW QUESTION 6**

A company has just adopted Nutanix as their technology of choice and is preparing to deploy Nutanix Cloud Clusters (NC@). Which step must be taken first to gain access to the NC2 console?

- A. Start a free trial via Billing Portal.
- B. Navigate to [doud.nutanix.com](https://doud.nutanix.com).
- C. Create a My Nutanix account.
- D. Open a support case with Nutanix.

**Answer: C**

**Explanation:**

? Initial Access: To gain access to the NC2 console, users need to create an account on the Nutanix platform.

? My Nutanix Account: Creating a My Nutanix account provides access to the Nutanix console, support, and other resources.

? Free Trial and Billing Portal: Starting a free trial or accessing the billing portal can be subsequent steps but require an initial account.

? Support Case: Opening a support case is not necessary for initial access but might be needed for specific issues later.

? Conclusion: Creating a My Nutanix account is the first step to accessing the NC2 console and other Nutanix services.

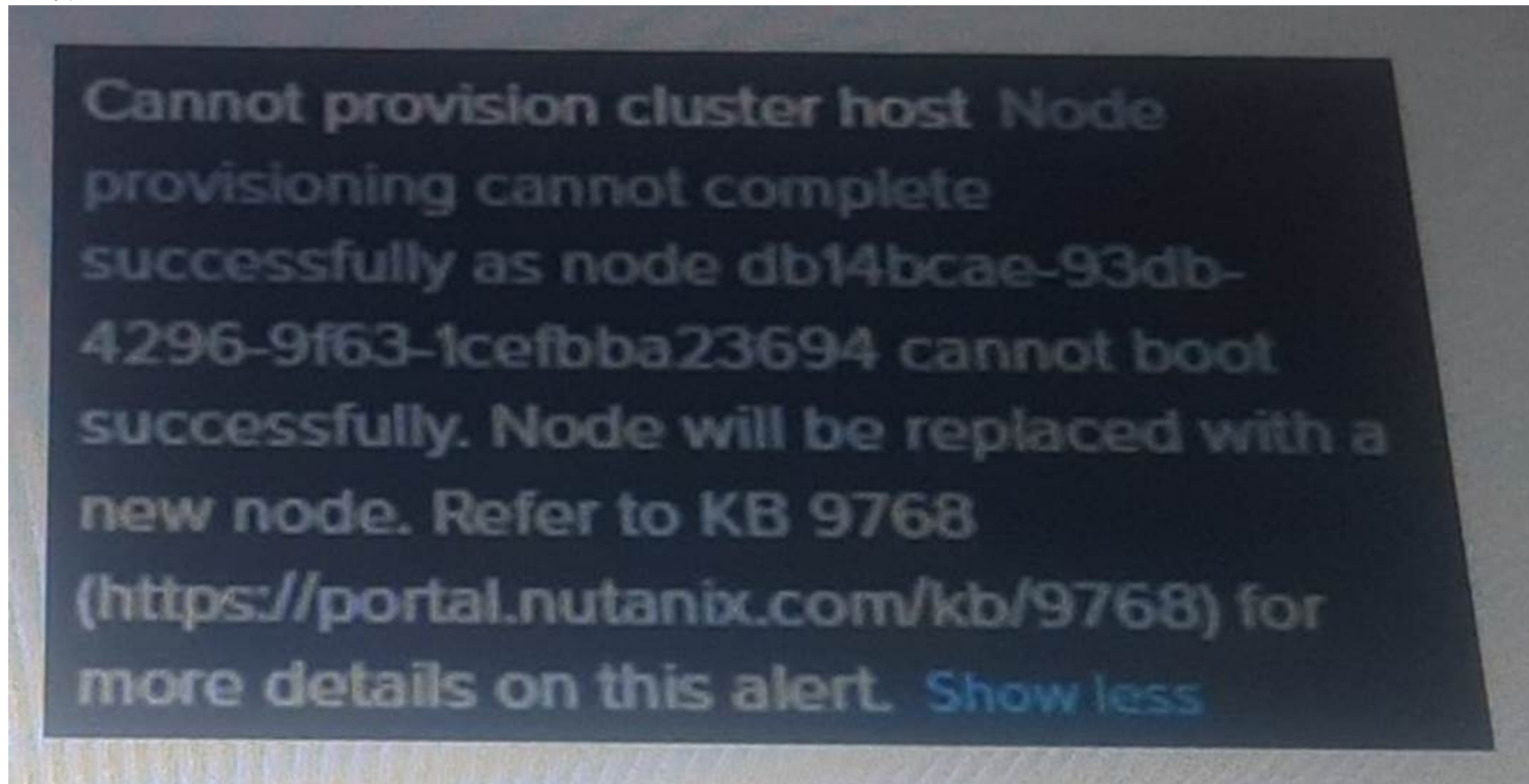
References:

? Nutanix Account Creation Guide

? Getting Started with Nutanix NC2

**NEW QUESTION 7**

Exhibit.



An administrator is trying to figure out why the NC2 cluster deployment in Azure failed. Which issue might be the cause?

- A. The administrator has not specified a DNS server during deployment.

- B. The selected bare metal node type is not supported in the deployment region.
- C. DNS servers are not reachable from cluster management VNet.
- D. The company does not have sufficient NCI/AOS licenses.

**Answer:** B

**Explanation:**

? Error Message Analysis: The error message indicates that the node cannot boot successfully and will be replaced with a new node. This points towards an issue related to the specific node type or configuration.

? Bare Metal Node Support: One common cause for such deployment failures is selecting a bare metal node type that is not supported in the chosen deployment region. Azure has specific regions where certain node types are available, and attempting to use an unsupported node type in a region can result in provisioning failures.

References:

? Nutanix KB 9768 for troubleshooting deployment issues: KB 9768

? Azure Region Availability Documentation

? Nutanix NC2 on Azure Deployment Guide

**NEW QUESTION 8**

A nutanix User VPC named Servers has a subnet named Tier1: Servers: 10.0.0.0/20

Tier1: 10.0.0.0/25

Tier is using floating IPS to allow inbound traffic to the web servers that are hosted for a payroll system.

The company requires that the Network Security Group allow other Native Azure instances running in subnet AD (10.20.0.0/24) in the Prism Central VNet to be able to contact the web servers.

Which statement is true regarding this company requirement?

- A. Native Azure instances \n the Prism Central vNet will be allowed access by default.
- B. The internal NIC of the Flow Gateway Network Security Group needs to allow to traffic from 1 10.20.0.0/24.
- C. The external NIC of the Flow Gateway Network Security Group needs to allow traffic from 10.20.0.0/24.
- D. Policy based routing in the Servers VPC must be edited to allow traffic from 10.20.0.0/24.

**Answer:** B

**Explanation:**

? Flow Gateway Network Security Group (NSG): NSGs control the traffic flow to and from network interfaces associated with VMs and other resources. Configuring the NSG correctly is crucial for ensuring that required traffic is allowed.

? Internal NIC Configuration: To allow Native Azure instances in the Prism Central VNet (10.20.0.0/24) to access the web servers in the Tier1 subnet, the internal NIC of the Flow Gateway must be configured to allow traffic from 10.20.0.0/24. This ensures that inbound traffic from these instances is permitted and properly routed to the web servers.

References:

? Azure Network Security Group Documentation

? Nutanix Flow Gateway Configuration Guide

**NEW QUESTION 9**

An administrator has noticed the company??s NC2 free trial expired 60 days ago.

What should the administrator do to continue using all of the NC2 features on existing clusters?

- A. Switch to a paid subscription plan.
- B. Nothin
- C. The clusters will have full feature support.
- D. Contact the cloud vendor.
- E. Contact Nutanix support to redeploy the cluster.

**Answer:** A

**Explanation:**

? Free Trial Expiration: Once the NC2 free trial period expires, the administrator needs to switch to a paid subscription plan to continue using all the features and functionalities provided by Nutanix NC2.

? Paid Subscription Benefits: Transitioning to a paid subscription ensures uninterrupted access to NC2 features, support, and updates, maintaining the operational capabilities of the existing clusters.

References:

? Nutanix Subscription and Billing Documentation

? Nutanix NC2 Support and Subscription Guide

**NEW QUESTION 10**

An administrator needs to open the following ports in the firewall between an on-premises cluster and azure for disaster recovery:

- \* 22
- \* 2009
- \* 2020
- \* 2049
- \* 3260
- \* 9440

Which rule-type should be created on the firewall for communication to be appropriately established?

- A. Outbound (TCP)
- B. Bi-directional (TCP)
- C. Bi-directional (ICMP)
- D. Outbound (ICMP)

**Answer:** B

**Explanation:**

? Port Requirements: The specified ports (22, 2009, 2020, 2049, 3260, 9440) are commonly used for various services and require TCP communication.  
? Communication Type: To ensure proper disaster recovery setup, bi-directional communication is needed to allow traffic to flow both from on-premises to Azure and vice versa.  
? TCP Protocol: These ports use the TCP protocol, which provides reliable communication between devices.  
? Conclusion: Creating a bi-directional (TCP) rule on the firewall allows the necessary communication for disaster recovery processes.  
References:  
? Nutanix Networking and Security Documentation  
? Azure Networking Documentation

**NEW QUESTION 10**

An administrator needs to ensure API calls are executing successfully from NC2 to manage Azure resources.  
Which cluster outbound to Azure connections are required to satisfy this task?

- A. azure-support.nutan/x.com
- B. portal.azure.com
- C. managementazure.com
- D. apikeys.nutanix.com

**Answer: D**

**Explanation:**

? API Key Management:For NC2 to manage Azure resources successfully, it needs to authenticate and authorize API calls. This is typically handled through API keys, which are managed via specific endpoints.  
? Required Connection:The endpointapikeys.nutanix.comis crucial for managing these API keys. Ensuring connectivity to this endpoint allows NC2 to verify and utilize the API keys needed for interacting with Azure services.  
References:  
? Nutanix NC2 API Configuration Guide  
? Azure API Management Documentation

**NEW QUESTION 15**

NC2 Azure API calls are failing and MCM no longer shows telemetry or health of the cluster.  
Where should the administrator look first?

- A. Check whitelisting of Outbound Communication
- B. Log into Prism and check alerts and notifications
- C. SSH into the NC2 Azure CVMs
- D. Check VPN/ExpressRoute

**Answer: A**

**Explanation:**

? Outbound Communication Whitelisting:For NC2 Azure API calls and telemetry data to function correctly, certain outbound communications must be allowed. If these communications are not whitelisted, API calls can fail, and telemetry or health data might not be reported correctly.  
? First Check:Given the symptoms (failing API calls and missing telemetry), the first step should be to ensure that all necessary outbound communications are correctly whitelisted. This includes ensuring that endpoints and services required for NC2 operation are accessible.  
References:  
? Nutanix NC2 Networking Requirements  
? Azure Networking and Security Configuration Guide

**NEW QUESTION 20**

Which entity should be contacted for cloud hardware support (EC2 instances, VPC, etc) related to NC2?

- A. Nutanix
- B. Public Cloud Vendor
- C. Partner
- D. Internal IT Operations team

**Answer: B**

**Explanation:**

? Cloud Hardware Support: For issues related to cloud hardware, such as EC2 instances or VPC configurations, the responsible entity is typically the public cloud vendor.  
? Nutanix Responsibility: Nutanix manages the software layer and integration aspects of the NC2 service, but the underlying hardware support is managed by the cloud provider (e.g., AWS, Azure).  
? Support Process:  
? Conclusion: For cloud hardware-related support, the appropriate contact is the public cloud vendor.  
References:  
? Nutanix Support Guide  
? Azure Support Documentation

**NEW QUESTION 23**

A new subnet needs to be created within Flow Virtual Networking to accommodate a new type of workload in the company??s NC2 Azure instance.  
Which type of network will satisfy this task?

- A. Underlay
- B. Overlay
- C. VPC



D. VNET

**Answer:** B

**Explanation:**

? Flow Virtual Networking: Nutanix Flow Virtual Networking allows for the creation of overlay networks to segment and manage network traffic.

? Network Types:

? Requirement: Creating a subnet for new workloads within Flow Virtual Networking suggests using an overlay network for logical separation and management.

? Conclusion: An overlay network within Flow Virtual Networking will satisfy the task of accommodating a new type of workload in the NC2 Azure instance.

References:

? Nutanix Flow Networking Guide

? Azure Virtual Network Documentation

**NEW QUESTION 25**

An administrator is planning an NC2 deployment in Azure and wants to connect the company's on-premises datacenter to the cloud environment.

What connectivity solution should the administrator use to avoid traffic between the locations flowing over the public internet?

A. ExpressRoute

B. Site-to-Site VPN

C. Point-to-Site VPN

D. VTEP Gateways

**Answer:** A

**Explanation:**

To connect the company's on-premises datacenter to the Azure cloud environment while avoiding traffic over the public internet, the administrator should use Azure ExpressRoute. ExpressRoute provides a private connection to Azure, offering more reliability, faster speeds, and lower latencies compared to typical internet connections. This service ensures that data traffic does not traverse the public internet, enhancing security and performance.

References

? Azure ExpressRoute Overview

**NEW QUESTION 30**

An administrator is tasked with creating a new subnet for a group of VMs that require inbound internet access. Internal private addresses must be obscured to servers on the public internet.

Which network is best suited for satisfying this requirement?

A. Bastion based network

B. No-NAT based network

C. Layer 2 Stretch network

D. NAT based network

**Answer:** D

**Explanation:**

? NAT Based Network: A NAT-based network is designed to provide inbound and outbound internet access while obscuring the internal private addresses. This setup uses Network Address Translation (NAT) to map internal IP addresses to a public IP address, ensuring that internal addresses are not exposed to the public internet.

? Security and Connectivity: NAT provides a layer of security by hiding internal IP addresses and allowing controlled access to external resources. This configuration is well-suited for VMs that need to communicate with servers on the public internet while maintaining the privacy of their internal network addresses.

References:

? Azure Virtual Network NAT Documentation

? Nutanix Networking and Security Configuration Guide

**NEW QUESTION 32**

An administrator manages a virtual desktop environment running on an NC2 cluster in Azure.

The desktop running on the cluster needs to contact resources on-premises through the ExpressRoute that has been setup. To save on bandwidth from the on-premises environment to Azure, the administrator wants the desktops to access the internet through an Azure NAT Gateway.

Which configuration will best accomplish this task?

A. Set the default route of 0.0.0.0/0 for the Nutanix User VPC pointing to the external-No-NAT network.

B. Set the default route of 0.0.0.0/0 for the Nutanix User VPC pointing to the external-NAT network

C. Set a route to the on-premises subnet for the Nutanix User VPC pointing to the external-No-NAT network.

D. Set the default route of 0.0.0.0/0 for the Nutanix User VPC pointing to the external-NAT network

E. Set a route to the on-premises subnet for the Nutanix User VPC pointing to the external-NAT network.

F. Assign all desktops Floating IPs and use an external-NAT network in the transit VPC

G. Set the default route of 0.0.0.0/0 for the Nutanix User VPC pointing to the external-NAT network.

**Answer:** B

**Explanation:**

? Default Route for Internet Traffic: By setting the default route of 0.0.0.0/0 for the Nutanix User VPC pointing to the external-NAT network, all internet-bound traffic from the desktops will be routed through the Azure NAT Gateway, conserving bandwidth on the ExpressRoute connection.

? On-Premises Route: Setting a specific route to the on-premises subnet for the Nutanix User VPC pointing to the external-No-NAT network ensures that traffic destined for on-premises resources bypasses the NAT Gateway and utilizes the ExpressRoute connection, optimizing the use of network paths.

References:

? Azure NAT Gateway Documentation

? Nutanix NC2 Networking Configuration Guide

**NEW QUESTION 35**

An administrator is tasked with allowing inbound connectivity for a user VM that resides on a NAT network. The VM is communicating successfully with other VMs

in the NAT network.

The cluster has the following characteristics A Transit VPC exists

- \* A User VPC exists

- \* A NAT subnet has been created

- \* 25 floating IP addresses are in use by other VMs

- \* Routes have been configured

When the administrator attempts to assign a floating IP address to the VM, none are available.

What is the reason for this?

A. An external DHCP server needs to be deployed into the cluster.

B. An additional Flow Gateway instance is required.

C. Geneve encapsulation only supports 25 Floating IP addresses.

D. Additional floating IP addresses need to be requested.

**Answer:** D

**Explanation:**

? Floating IP Address Limitation:The cluster already has 25 floating IP addresses in use by other VMs. If the administrator cannot assign a floating IP address to the new VM, it is because the pool of available floating IPs is exhausted.

? Requesting Additional Floating IPs:To resolve this issue, the administrator needs to request additional floating IP addresses to be allocated to the NAT subnet.

This will ensure that there are enough IP addresses available for all VMs requiring inbound connectivity.

References:

? Nutanix Networking Configuration Guide

? Azure IP Address Management Documentation

**NEW QUESTION 40**

Native Azure VMs exist in a subnet (10.20.80.0/20) in the Prism Central VNet that need access to the workload running on the Nutanix User.

What needs to be modified to allow access from the native Azure VMs to the workloads running in the Nutanix User VPC?

A. Remove the ERP value on the transit VPC and Nutanix User VPC.

B. Change the ERP value to the the subnet range of the native Azure VMs (10.20.80.0/20) on the Transit VPC and the Nutanix User VPC.

C. Adjust the Inbound Network Security Group on the Flow Gateway VM External NIC to allow traffic 102030.0/20.

D. Adjust the Inbound Network Security Group on the Flow Gateway VM Internal NIC to allow traffic 102030,0/20.

**Answer:** D

**Explanation:**

To allow access from the native Azure VMs to the workloads running in the Nutanix User VPC, the administrator needs to:

? Adjust the Inbound Network Security Group (NSG) on the Flow Gateway VM's

Internal NIC.

? Specifically, allow traffic from the subnet range of the native Azure VMs (10.20.80.0/20) in the Inbound rules of the NSG associated with the Internal NIC of the Flow Gateway VM.

This configuration change permits the desired network traffic, ensuring that the native Azure VMs can communicate with the workloads in the Nutanix User

VPC.References

? Azure Network Security Groups Overview

? Nutanix Networking and Security Best Practices

**NEW QUESTION 45**

Which two options are prerequisites for deploying an NC2 cloud cluster in Azure? (Choose two.)

A. An Azure Express Route circuit

B. A valid CIDR range

C. A my.nutanix.com account

D. An on Premises Prism Central environment

**Answer:** BC

**Explanation:**

? Valid CIDR Range:When deploying an NC2 cloud cluster in Azure, a valid CIDR range is necessary to define the IP address space for the cluster and its associated networks. This range ensures that there are no conflicts with existing network configurations and provides sufficient addresses for the cluster resources.

? My Nutanix Account:A my.nutanix.com account is required to access Nutanix services and manage NC2 deployments. This account allows administrators to log in, configure settings, and manage their Nutanix environment on Azure.

References:

? Nutanix NC2 on Azure Deployment Guide

? Azure Virtual Network Documentation

**NEW QUESTION 48**

An administrator needs to attach a network interface to a Flow Gateway VM.

What option should be enabled in the Azure portal and in the OS of the Flow gateway VM to meet this network requirement?

A. Port Tagging

B. Dynamic Route

C. IP Forwarding

D. Static Route

**Answer:** C

**Explanation:**

? IP Forwarding in Azure:Enabling IP forwarding allows the VM to forward network traffic that is not specifically addressed to itself. This is necessary for network

devices like the Flow Gateway VM to route traffic correctly.

? Network Interface Configuration: Both the Azure portal settings and the VM's operating system must have IP forwarding enabled to ensure proper traffic handling and routing capabilities.

References:

? Azure Virtual Machine Networking Documentation

? Nutanix Flow Gateway Configuration Guide

#### NEW QUESTION 51

An administrator is tasked with preparing the company's Azure subscription for use with NCZ.

Which two Azure Resource Providers need to be registered? (Choose two.)

- A. Microsoft.HybridNetwork
- B. Microsoft.Network
- C. Microsoft.Nutanix
- D. Microsoft.HybridCompute

**Answer: BC**

#### Explanation:

? Azure Resource Providers: To prepare an Azure subscription for NC2, specific resource providers must be registered to enable necessary services and resources.

? Required Providers:

? Other Providers:

? Conclusion: Registering both "Microsoft.Network" and "Microsoft.Nutanix" ensures that all necessary network and Nutanix-specific resources are available for NC2 deployment.

References:

? Azure Resource Providers Documentation

? Nutanix on Azure Setup Guide

#### NEW QUESTION 55

What is the minimum number of nodes needed to deploy an RF3 NC2 cluster?

- A. 1
- B. 3
- C. 5
- D. 7

**Answer: C**

#### Explanation:

? Replication Factor (RF3): RF3 requires that data is replicated across three different nodes to ensure data durability and fault tolerance. This replication scheme allows the system to tolerate the failure of two nodes simultaneously.

? Minimum Node Requirement for RF3: To meet the RF3 requirements while maintaining operational capability, a minimum of five nodes is necessary. This configuration ensures that there are enough nodes to distribute the data and provide the necessary redundancy.

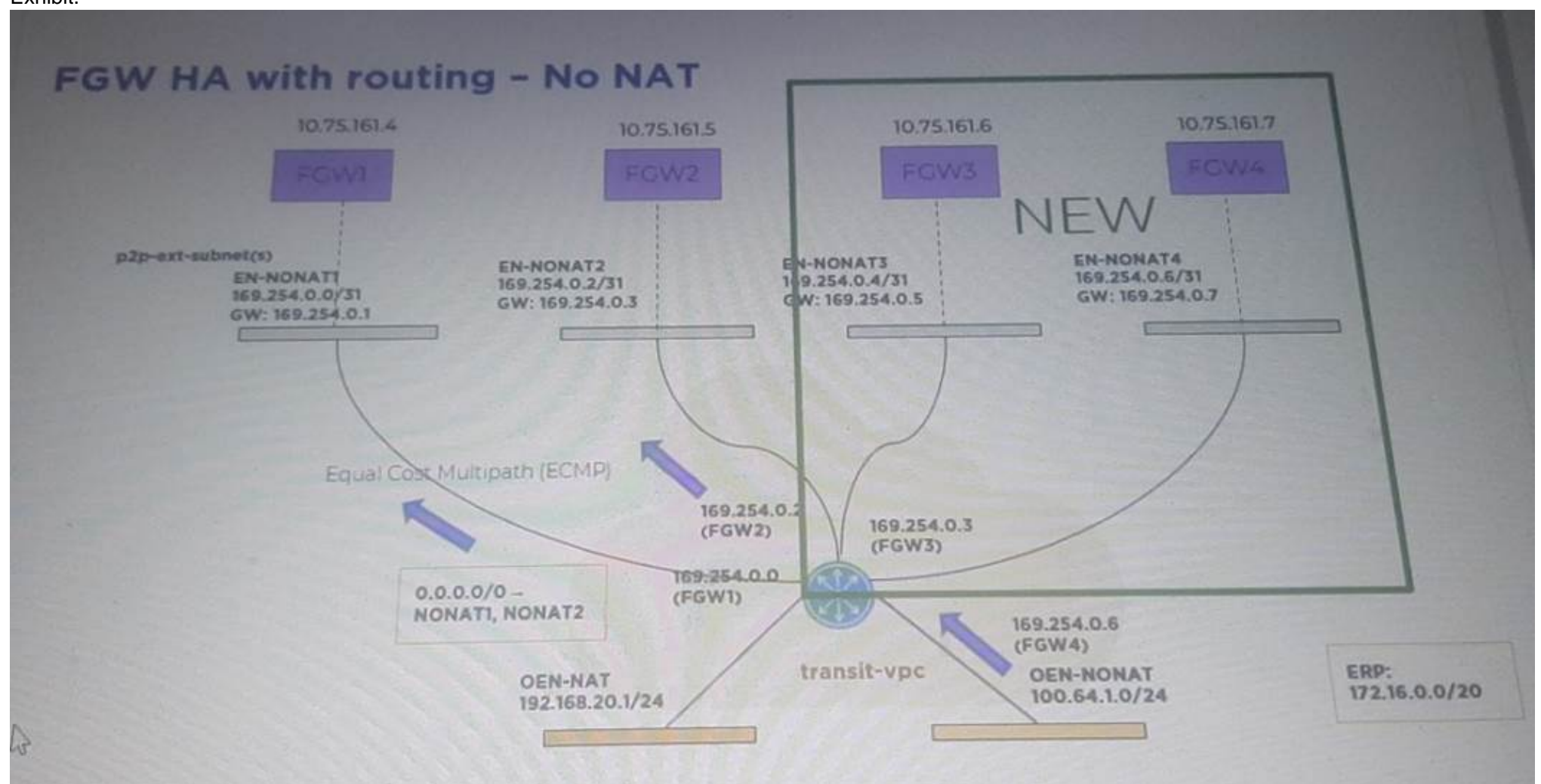
References:

? Nutanix Replication Factor Documentation

? Nutanix NC2 on Azure Deployment Guide

#### NEW QUESTION 57

Exhibit.





AN NC2 on Azure Cluster was deployed with two Flow gateways in HA (FGW1 and FGW2). After a week of use. Four bare-metal nodes, were added to the NC2 cluster and additional workloads were added.  
It was determined that additional bandwidth for north/South traffic would be needed. Two additional Flow gateways were added (FGW3 and FGW4) from the NC2 portal configuration menu.  
The existing workloads prior to expansion on the NC2 cluster will be able to use which Flow Gateways using the No-Nat (routed) traffic path?

- A. Only the Flow Gateway that each workload was originally using.
- B. All Flow Gateways can be used.
- C. All Flow Gateways can be used after the existing workloads reboot.
- D. FGW1&FGW2 only, new workloads can use FGW3 & FGW4.

**Answer: B**

**Explanation:**

In the scenario presented, the NC2 cluster was initially deployed with two Flow Gateways (FGW1 and FGW2) in HA. After adding four bare-metal nodes and additional workloads, two more Flow Gateways (FGW3 and FGW4) were added to handle the increased bandwidth for north/south traffic. Given the configuration, the existing workloads can utilize all available Flow Gateways (FGW1, FGW2, FGW3, and FGW4) for No-NAT (routed) traffic paths. This setup allows for Equal Cost Multipath (ECMP) routing, distributing traffic load across all Flow Gateways.

References

? Nutanix Flow Networking

**NEW QUESTION 59**

An organization uses a Pay As. You Go subscription plan and wants to pay directly to Nutanix.  
What is a valid payment method available to pay directly to Nutanix?

- A. Via Wire Transfer
- B. Via Credit Card
- C. Via Physical Check
- D. Via Online Payment Platform

**Answer: A**

**Explanation:**

? Payment Method Options:When using a Pay As You Go subscription plan and opting to pay directly to Nutanix, wire transfer is a valid and secure payment method.

? Direct Payment:Wire transfers allow for the direct transfer of funds from the organization's bank account to Nutanix, ensuring a straightforward and efficient payment process.

References:

? Nutanix Billing and Payment Documentation

? Pay As You Go Subscription Payment Methods Guide

**NEW QUESTION 61**

An administrator needs to extend an on-premises subnet to an NC2 cluster on Azure. Which set of options should the administrator configure to complete this task?

- A. Subnet Type: VPC subnetsTraffic Type: IPv4 unicast traffic and ARPOn-premises Hypervisor: ESXi, AHV, Hyper-V
- B. Subnet Type: On-premises VLAN subnets and VPC subnets Traffic Type: IPv4 unicast traffic IPv6 unicast traffic and ARP On-premises Hypervisor: ESXi and AHV
- C. Subnet Type: On-premises VLAN subnets and VPC subnets Traffic Type: IPv4 unicast traffic and ARP On-premises Hypervisor: AHV
- D. Subnet Type: On-premises VLAN subnets and VPC subnets Traffic Type: IPv6 umcasi traffic and ARP On-premises Hypervisor: Hyper-V

**Answer: B**

**Explanation:**

To extend an on-premises subnet to an NC2 cluster on Azure, the administrator should configure:

? Subnet Type:Both on-premises VLAN subnets and VPC subnets. This ensures that the subnet can span both the on-premises environment and the Azure environment.

? Traffic Type:Support for IPv4 unicast traffic, IPv6 unicast traffic, and ARP is necessary to ensure proper communication and address resolution across the extended subnet.

? On-premises Hypervisor:ESXi and AHV are supported hypervisors for this type of configuration, allowing for a seamless extension of the subnet between these environments.

References

? Nutanix Hybrid Cloud Networking

**NEW QUESTION 65**

An administrator just completed the initial account setup tasks for NC2 on Azure, such as creating a My Nutanix account, starting a 30-day free trial for NC2 on Azure, and setting up the Azure account and subscription.

Which two additional actions should the administrator take before creating a cluster? (Choose two.)

- A. Purchasing an Azure savings plan
- B. Allowlisting the Azure Subscription
- C. Creating an App Registration
- D. Configure VPN for connectivity

**Answer: BC**

**Explanation:**

? Allowlisting the Azure Subscription:This step ensures that the Azure subscription is recognized and permitted by Nutanix Cloud Clusters (NC2). Without allowlisting, the necessary resources and permissions within the Azure subscription may not be available for NC2, potentially blocking the creation and management of clusters.

? Creating an App Registration: This involves setting up an application within Azure Active Directory (AAD) to enable secure communication between NC2 and Azure. The app registration process includes assigning permissions and obtaining necessary authentication credentials, facilitating the interaction and management of Azure resources by NC2.

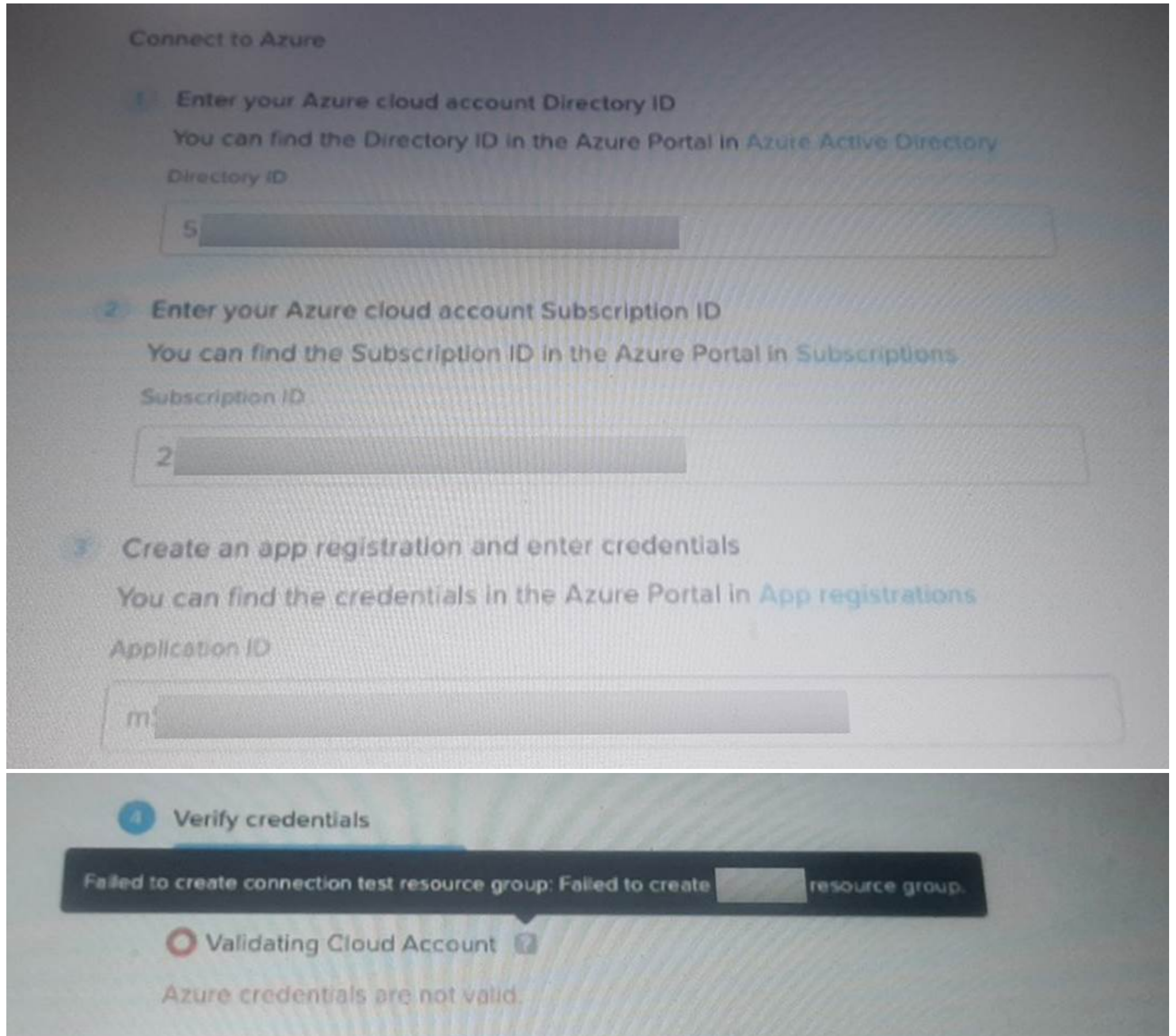
References:

? Nutanix Documentation on NC2 Setup

? Azure Active Directory Application Registration Guide

## NEW QUESTION 70

Exhibit



Which action should the administrator take to troubleshoot the error shown in the exhibit?

- A. Check the NC2 organization permissions.
- B. Check the Azure AD App registration Client Secret.
- C. Check the Azure subnet delegation status.
- D. Check the PC VNet is peered correctly.

**Answer: B**

### Explanation:

To troubleshoot the error shown in the exhibit where Azure credentials are not valid and the creation of the resource group failed, the administrator should:

? Verify that the Azure AD App registration has been correctly configured, especially the Client Secret.

? Ensure that the Client Secret is valid, has not expired, and matches what has been entered in the configuration.

This step is crucial because an invalid or expired Client Secret would prevent the validation of Azure credentials and the creation of necessary resources.

References

? Azure AD App Registration and Secrets Management

? Nutanix Cluster Configuration Documentation

## NEW QUESTION 75



A company is extending a subnet from their on-premises environment to an NC2 cluster on Azure. The company is considering using either a Virtual Tunnel End Point (VTEP) or a layer 2 subnet Extension over VPN.

In which two scenarios would it be advantageous to use VTEP for this requirement? (Choose two.)

- A. Connectivity between sites already provides encryption.
- B. Only one remote Availability Zone exists that needs the subnet extended.
- C. Connectivity between sites already does not provide encryption.
- D. Multiple remote Availability Zones exist to add to the same VTEP-based extended Layer 2 subnet.

**Answer:** AD

**Explanation:**

? Scenario Analysis:

? Scenarios B and C:

? Conclusion: VTEP is advantageous when encryption is already in place and when multiple remote zones need to be connected to the same extended subnet.

References:

? Nutanix NC2 Networking Guide

? Azure Networking Documentation

**NEW QUESTION 79**

What is an available log module when configuring a syslog server in the Prism Central Admin Center?

- A. Prism
- B. Zookeeper
- C. API Audit
- D. Acropolis

**Answer:** D

**Explanation:**

? Log Modules in Prism Central: When configuring a syslog server, different log modules can be selected to send logs to an external syslog server for centralized logging and analysis.

? Acropolis Logs: The Acropolis module captures logs related to the Acropolis

Hypervisor (AHV), including virtual machine operations, storage operations, and other critical functions within the Nutanix environment.

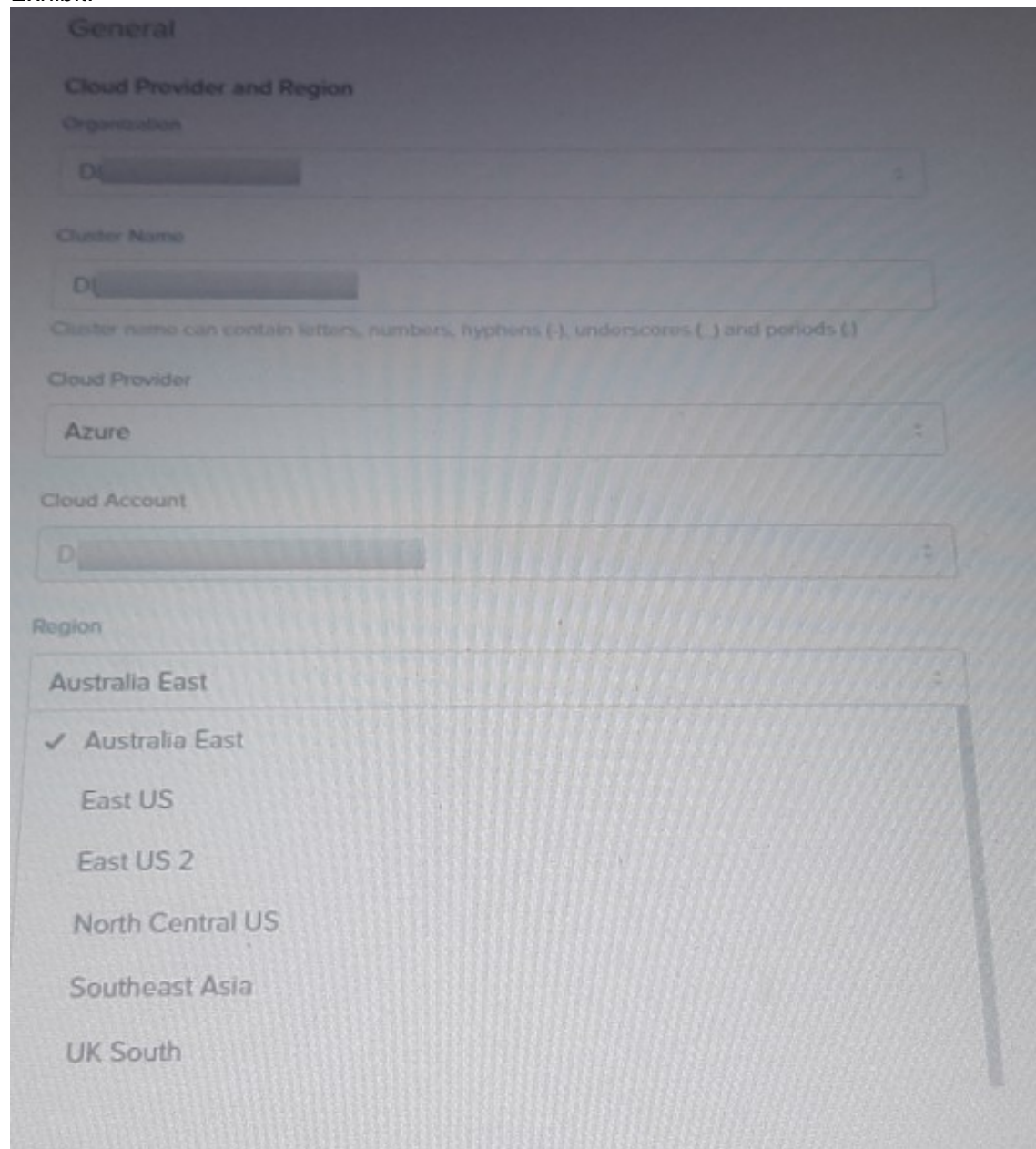
References:

? Nutanix Prism Central Administration Guide

? Nutanix Acropolis Documentation

**NEW QUESTION 84**

Exhibit.



An administrator is trying to create an NC2 cluster in Azure, but does not see the required region in the drop-down list. Which two steps could the administrator take to resolve this issue? (Choose two.)

- A. Check the Azure subscription is created in the correct region.

- B. Check the list of regions specified under the NC2 organization cloud account.
- C. Check the NC2 Billingconsole to ensure the region is listed.
- D. Ensure that the Azure region is whitelisted for use by Microsoft in the subscription.

**Answer:** BD

**Explanation:**

? Check the list of regions specified under the NC2 organization cloud account: The list of available regions in the NC2 console might be restricted based on the configuration of the cloud account associated with the NC2 organization. Verifying this list ensures that the desired region is included and available for cluster creation.

? Ensure that the Azure region is whitelisted for use by Microsoft in the subscription: Sometimes, specific regions need to be explicitly enabled or whitelisted in the Azure subscription for certain services. This step ensures that the required region is permitted for use within the Azure subscription, allowing the NC2 cluster to be created in that region.

References:

? Azure Subscription and Service Limits Documentation

? Nutanix NC2 Configuration and Setup Guide

**NEW QUESTION 85**

.....



## Thank You for Trying Our Product

### We offer two products:

1st - We have Practice Tests Software with Actual Exam Questions

2nd - Questions and Answers in PDF Format

### NCP-CI-Azure Practice Exam Features:

- \* NCP-CI-Azure Questions and Answers Updated Frequently
- \* NCP-CI-Azure Practice Questions Verified by Expert Senior Certified Staff
- \* NCP-CI-Azure Most Realistic Questions that Guarantee you a Pass on Your FirstTry
- \* NCP-CI-Azure Practice Test Questions in Multiple Choice Formats and Updatesfor 1 Year

**100% Actual & Verified — Instant Download, Please Click**  
**[Order The NCP-CI-Azure Practice Test Here](#)**