

Exam Questions SnowPro-Core

SnowPro Core Certification Exam

<https://www.2passeasy.com/dumps/SnowPro-Core/>



NEW QUESTION 1

- (Exam Topic 1)

Which of the following statements would be used to export/unload data from Snowflake?

- A. COPY INTO @stage
- B. EXPORT TO @stage
- C. INSERT INTO @stage
- D. EXPORT_TO_STAGE(stage => @Wage, select => 'select * from t1');

Answer: A

Explanation:

Reference: <https://docs.snowflake.com/en/user-guide/data-unload-considerations.html>

NEW QUESTION 2

- (Exam Topic 1)

True or False: Snowflake charges a premium for storing semi-structured data.

- A. True
- B. False

Answer: B

Explanation:

Reference:

<https://snowflakecommunity.force.com/s/question/0D50Z00008ckwNuSAI/does-snowflakecharges- premium-for-storing-semi-structured-data>

NEW QUESTION 3

- (Exam Topic 1)

What services does Snowflake automatically provide for customer that they may have been responsible for with their on premise system? Select all the below that apply.

- A. Installing and configuring hardware
- B. Patching software
- C. Physical security
- D. Maintaining metadata and statistics

Answer: ABD

NEW QUESTION 4

- (Exam Topic 1)

True or False: Snowflake bills for a minimum of five minutes each time a Virtual Warehouse is started.

- A. True
- B. False

Answer: B

Explanation:

Reference: <https://docs.snowflake.com/en/user-guide/credits.html>

NEW QUESTION 5

- (Exam Topic 1)

Data storage for individual tables can be monitored using which commands and/or object(s)? Choose 2 answers

- A. SHOW TABLES;
- B. SHOW STORAGE BY TABLE;
- C. Information Schema -> TABLE_STORAGE_METRICS
- D. Information Schema -> TABLE_HISTORY

Answer: AC

NEW QUESTION 6

- (Exam Topic 1)

The FLATEEN function is used to query which type of data in Snowflake?

- A. Structured data
- B. Semi-structured data
- C. Both of the above
- D. None of the above

Answer: B

Explanation:

Reference: <https://docs.snowflake.com/en/user-guide/querying-semistructured.html>

FLATTEN is used to unnest semi-structured data. Don't see an application for structured data as by definition it shouldn't be nested.

NEW QUESTION 7

- (Exam Topic 1)

A deterministic query is run at 8am, takes 5 minutes, and the results are cached. Which of the following statements are true?

Choose 2 answers

- A. The exact query will ALWAYS return the precomputed result set for the RESULT_CACHE_ACTIVE = time period
- B. The same exact query will return the precomputed results if the underlying data hasn't changed and the results were last accessed within the previous 24 hour period
- C. The same exact query will return the precomputed results even if the underlying data has changed as long as the results were last accessed within the previous 24 hour period
- D. The "24 hour" on the precomputed results gets renewed every time the exact query is executed

Answer: BD

Explanation:

The results cache will only be used if it's the same query AND the same role executing the query

NEW QUESTION 8

- (Exam Topic 1)

True or False: When a new Snowflake object is created, it is automatically owned by the user who created it.

- A. True
- B. False

Answer: A

Explanation:

Reference: <https://docs.snowflake.com/en/user-guide/security-access-control-overview.html>

NEW QUESTION 9

- (Exam Topic 1)

Which of the following connectors allow Multi-Factor Authentication (MFA) authorization when connecting? (Choose all that apply.)

- A. JDBC
- B. SnowSQL
- C. Snowflake Web Interface (UI)
- D. ODBC
- E. PythonD18912E1457D5D1DDCBD40AB3BF70D5D

Answer: ABCDE

Explanation:

Reference: <https://docs.snowflake.com/en/user-guide/security-mfa.html>

NEW QUESTION 10

- (Exam Topic 1)

Which type of table corresponds to a single Snowflake session?

- A. Temporary
- B. Transient
- C. Provisional
- D. Permanent

Answer: A

Explanation:

Snowflake supports creating temporary tables for storing non-permanent, transitory data (e.g. ETL data, session-specific data). Temporary tables only exist within the session in which they were created and persist only for the remainder of the session.
<https://docs.snowflake.com/en/user-guide/tables-temp-transient.html#:~:text=Snowflake%20supports%20creatin>

NEW QUESTION 10

- (Exam Topic 1)

Which of the following statement is true of Snowflake? Select one.

- A. It was built specifically for the cloud
- B. it was built as an on-premises solution and then ported to the cloud
- C. It was designed as a hybrid database to allow customers to store data either on premises or in the cloud
- D. It was built for Hadoop architecture
- E. It's based on an Oracle Architecture

Answer: A

NEW QUESTION 12

- (Exam Topic 1)

Why would a customer size a Virtual Warehouse from an X-Small to a Medium?

- A. To accommodate more queries
- B. To accommodate more users
- C. To accommodate fluctuations in workload
- D. To accommodate a more complex workload

Answer: D

Explanation:

Reference: <https://docs.snowflake.com/en/user-guide/warehouses-considerations.html>

NEW QUESTION 15

- (Exam Topic 1)

True or False: All Snowflake table types include fail-safe storage.

- A. True
- B. False

Answer: B

NEW QUESTION 18

- (Exam Topic 1)

True or False: A customer using SnowSQL / native connectors will be unable to also use the Snowflake Web interface (UI) unless access to the UI is explicitly granted by supported.

- A. True
- B. False

Answer: B

Explanation:

Reference: <https://docs.snowflake.com/en/user-guide/connecting.html>

NEW QUESTION 20

- (Exam Topic 1)

True or False: A single database can exist in more than one Snowflake account.

- A. True
- B. False

Answer: B

Explanation:

Reference: <https://docs.snowflake.com/en/sql-reference/ddl-database.html>

NEW QUESTION 22

- (Exam Topic 1)

When loading data into Snowflake, the COPY command supports: Choose 2 answers

- A. Joins
- B. Fitters
- C. Data type conversions
- D. Column reordering
- E. Aggregates

Answer: CD

NEW QUESTION 26

- (Exam Topic 1)

True or False: A Snowflake account is charged for data stored in both Internal and External Stages.

- A. True
- B. False

Answer: A

Explanation:

Reference: <https://docs.snowflake.com/en/user-guide/tables-storage-considerations.html>

NEW QUESTION 27

- (Exam Topic 1)

True or False: During data unloading, only JSON and CSV files can be compressed.

- A. True
- B. False

Answer: B

Explanation:

Reference: <https://docs.snowflake.com/en/sql-reference/sql/create-file-format.html>

NEW QUESTION 28

- (Exam Topic 1)

Which of the following statements are true about Schemas in Snowflake? (Choose two.)

- A. A Schema may contain one or more Databases
- B. A Database may contain one or more Schemas
- C. A Schema is a logical grouping of Database Objects
- D. Each Schema is contained within a Warehouse

Answer: BC

Explanation:

Reference: <https://docs.snowflake.com/en/user-guide/data-sharing-multiple-db.html>

NEW QUESTION 29

- (Exam Topic 1)

What is the lowest Snowflake edition that offers Time Travel up to 90 days?

- A. standard Edition
- B. Premier Edition
- C. Enterprise Edition
- D. Business Critical Edition

Answer: C

Explanation:

Reference: <https://docs.snowflake.com/en/user-guide/data-availability.html>

NEW QUESTION 34

- (Exam Topic 1)

A role is created and owns 2 tables. This role is then dropped. Who will now own the two tables?

- A. The tables are now orphaned
- B. The user that deleted the role
- C. SYSADMIN
- D. The assumed role that dropped the role

Answer: D

Explanation:

Reference: <https://docs.snowflake.com/en/sql-reference/sql/drop-role.html>

NEW QUESTION 37

- (Exam Topic 1)

True or False: Pipes can be suspended and resumed.

- A. True
- B. False

Answer: A

Explanation:

<https://docs.snowflake.com/en/user-guide/data-load-snowpipe-intro.html#pausing-or-resuming-pipes> Pausing or Resuming Pipes In addition to the pipe owner, a role that has the following minimum permissions can pause or resume the pipe:

NEW QUESTION 38

- (Exam Topic 1)

What are the three layers that make up Snowflake's architecture? Choose 3 answer

- A. Compute
- B. Tri-Secret Secure
- C. Storage
- D. Cloud Services

Answer: ACD

Explanation:

Reference: <https://docs.snowflake.com/en/user-guide/intro-key-concepts.html>

NEW QUESTION 42

- (Exam Topic 1)

Which are true of Snowflake roles?

- A. All grants to objects are given to roles, and never to users
- B. In order to do DML/DOL, a user needs to have selected a single role that has that specific access to the object and operation
- C. The public role controls all other roles
- D. Roles are a subset of users and users own objects in Snowflake

Answer: AB

NEW QUESTION 46

- (Exam Topic 1)

Which of the following are common use cases for zero-copy cloning? Choose 3 answers

- A. Quick provisioning of Dev and Test/QA environments
- B. Data backups
- C. Point in time snapshots
- D. Performance optimization

Answer: ABC

Explanation:

Reference: <https://community.snowflake.com/s/question/0D50Z00009C3VIMSAV/zero-copy-cloning>

NEW QUESTION 48

- (Exam Topic 1)

True or False: Snowflake's Global Services Layer gathers and maintains statistics on all columns in all micro-partitions.

- A. True
- B. False

Answer: A

Explanation:

Snowflake is a single, integrated platform delivered as-a-service. It features storage, compute, and global services layers that are physically separated but logically integrated.

NEW QUESTION 49

- (Exam Topic 1)

True or False: Each worksheet in the Snowflake Web Interface (UI) can be associated with different roles, databases, schemas, and Virtual Warehouses.

- A. True
- B. False

Answer: A

Explanation:

Reference: <https://docs.snowflake.com/en/user-guide/ui-worksheet.html>

NEW QUESTION 52

- (Exam Topic 1)

True or False: When data share is established between a Data Provider and a data Consumer, the Data Consumer can extend that data share to other Data Consumers.

- A. True
- B. False

Answer: B

Explanation:

Reference: <https://docs.snowflake.com/en/user-guide/data-sharing-intro.html>

NEW QUESTION 57

- (Exam Topic 1)

For a multi-cluster Warehouse, the number of credits billed is calculated on: Select one.

- A. The number of queries that ran using the Warehouse.
- B. The size of the Warehouse and the number of clusters that ran within a given time period.
- C. The size of the Warehouse and the maximum number of clusters configured for the Warehouse.
- D. The number of users who accessed the Warehouse.

Answer: B

NEW QUESTION 62

- (Exam Topic 1)

As a best practice, clustering keys should only be defined on tables of which minimum size?

- A. Multi-Kilobyte (KB) Range
- B. Multi-Megabyte (MB) Range
- C. Multi-Gigabyte (GB) Range
- D. Multi-Terabyte (TB) Range

Answer: D

Explanation:

Reference: <https://docs.snowflake.com/en/user-guide/tables-clustering-keys.html>

NEW QUESTION 66

- (Exam Topic 1)

Which is true of Snowflake network policies? A Snowflake network policy: (Choose two.)

- A. Is available to all Snowflake Editions
- B. Is only available to customers with Business Critical Edition
- C. Restricts or enables access to specific IP addresses
- D. Is activated using an “ALTER DATABASE” command

Answer: AC

Explanation:

Reference: <https://docs.snowflake.com/en/sql-reference/sql/create-network-policy.html>

NEW QUESTION 70

- (Exam Topic 1)

True or False: It is possible to load data into Snowflake without creating a named File Format object.

- A. True
- B. False

Answer: A

Explanation:

Reference: <https://docs.snowflake.com/en/user-guide/data-load-external-tutorial-create-file-format.html>

NEW QUESTION 74

- (Exam Topic 1)

When scaling up Virtual Warehouse by increasing Virtual Warehouse t-shirt size, you are primarily scaling for improved: Select one.

- A. Concurrency
- B. Performance

Answer: B

Explanation:

Reference:

<https://docs.snowflake.com/en/user-guide/warehouses-considerations.html#warehouse-resizing-improves-perfor>

NEW QUESTION 75

- (Exam Topic 1)

What is the recommended Snowflake data type to store semi-structured data like JSON?

- A. VARCHAR
- B. RAW
- C. LOB
- D. VARIANT

Answer: D

Explanation:

Reference: <https://docs.snowflake.com/en/sql-reference/data-types-semistructured.html>

NEW QUESTION 79

- (Exam Topic 1)

True or False: You can resize a Virtual Warehouse while queries are running.

- A. True
- B. False

Answer: A

Explanation:

Reference: <https://docs.snowflake.com/en/user-guide/warehouses-tasks.html>

NEW QUESTION 83

- (Exam Topic 1)

True or False: Bulk unloading of data from Snowflake supports the use of a SELECT statement.

- A. True
- B. False

Answer: A

Explanation:

Reference: <https://docs.snowflake.com/en/user-guide-data-unload.html>

NEW QUESTION 84

- (Exam Topic 1)

True or False: Snowflake supports federated authentication in all editions.

- A. True
- B. False

Answer: A

Explanation:

Reference:

<https://community.snowflake.com/s/news/federated-authentication-sso-now-available-in-all-snowflake-editions>

NEW QUESTION 88

- (Exam Topic 1)

Which of the following statements is true of Snowflake?

- A. It was built specifically for the cloud
- B. It was built as an on-premises solution and then ported to the cloud
- C. It was designed as a hybrid database to allow customers to store data either on premises or in the cloud
- D. It was built for Hadoop architecture
- E. It's based on an Oracle Architecture

Answer: A

Explanation:

Reference: <https://www.stitchdata.com/resources/snowflake/>

NEW QUESTION 93

- (Exam Topic 1)

Which of the following languages can be used to implement Snowflake User Defined Functions (UDFs)? Choose 2 answers

- A. Java
- B. JavaScript
- C. SQL
- D. Python

Answer: BC

Explanation:

Reference: <https://docs.snowflake.com/en/sql-reference/user-defined-functions.html>

NEW QUESTION 98

- (Exam Topic 1)

True or False: When a user creates a role, they are initially assigned ownership of the role and they maintain ownership until it is transferred to another user.

- A. True
- B. False

Answer: A

Explanation:

Reference: <https://docs.snowflake.com/en/user-guide/security-access-control-overview.html>

NEW QUESTION 102

- (Exam Topic 1)

If auto-suspend is enable for a Virtual Warehouse, he Warehouse is automatically suspended when:

- A. All Snowflake sessions using the warehouse are terminated.
- B. The last query using the warehouse completes.
- C. There are no users loaned into Snowflake.
- D. The Warehouse is inactive for a specified period of time.

Answer: D

Explanation:

Reference: <https://docs.snowflake.com/en/user-guide/warehouses-overview.html>

NEW QUESTION 105

- (Exam Topic 1)

What parameter controls if the Virtual warehouse starts immediately after the CREATE WAREHOUSE statement? Select one.

- A. INITIALLY_SUSPENDED = TRUE/FALSE
- B. START_AFTCR_CREATE = TRUE/FALSE
- C. START_TTIME = 60 // (seconds from now)
- D. START.TIME = CURRENT.DATE()

Answer: A

NEW QUESTION 109

- (Exam Topic 1)

To run a Multi-Cluster Warehouse in auto-scale mode, a user would:

- A. Configure the Maximum Clusters setting to “Auto-Scale”
- B. Set the Warehouse type to “Auto”
- C. Set the Minimum Clusters and Maximum Clusters settings to the same value
- D. Set the Minimum Clusters and Maximum Clusters settings to the different values

Answer: D

Explanation:

Reference: https://help.pentaho.com/Documentation/9.1/Products/Modify_Snowflake_warehouse

NEW QUESTION 110

- (Exam Topic 1)

True or False: You can query the files in an External Stage directly without having to load the data into a table.

- A. True
- B. False

Answer: A

Explanation:

Reference: <https://docs.snowflake.com/en/user-guide/tables-external-intro.html>

External tables are read-only, therefore no DML operations can be performed on them; however, external tables can be used for query and join operations. Views can be created against external tables.

NEW QUESTION 111

- (Exam Topic 1)

What is the minimum Snowflake edition that provides multi-cluster warehouses and up to 90 days of Time Travel?

- A. Standard
- B. Premier
- C. Enterprise
- D. Business Critical Edition

Answer: C

Explanation:

Reference: <https://docs.snowflake.com/en/user-guide/intro-editions.html>

NEW QUESTION 114

- (Exam Topic 1)

True or False: You can define multiple columns within a clustering key on a table.

- A. True
- B. False

Answer: A

Explanation:

Reference: <https://docs.snowflake.com/en/user-guide/tables-clustering-keys.html>

NEW QUESTION 116

- (Exam Topic 1)

Each incremental increase in Virtual Warehouse size (e.g. Medium to Large) generally results in what? Select one.

- A. More micro-partitions
- B. Better query scheduling
- C. Double the numbers of servers In the compute duster
- D. Higher storage costs

Answer: C

NEW QUESTION 119

- (Exam Topic 1)

True or False: Query ID's are unique across all Snowflake deployments and can be used in communication with Snowflake Support to help troubleshoot issues.

- A. True
- B. False

Answer: A

NEW QUESTION 120

- (Exam Topic 1)

Which of the following items does the Cloud services Layer manage? Choose 4 answers

- A. user authentication
- B. Metadata
- C. Query compilation and optimization
- D. external blob storage
- E. Data security

Answer: ABCE

NEW QUESTION 122

- (Exam Topic 1)

True or False the longer the data retention period, the higher the resulting storage costs.

- A. True
- B. False

Answer: A

NEW QUESTION 127

- (Exam Topic 1)

What privileges are required to execute a task?

- A. To execute a task, you need the EXECUTE TASK.
- B. A task is an account-level object and can only be executed by the Account Admin role.
- C. Tasks run automatically and do run under any role.
- D. Tasks are stored in a special database called the utility database and require EXECUTE TASK privilege in the utility database.

Answer: A

NEW QUESTION 128

- (Exam Topic 1)

How would you execute a series of SQL statements using Task?

- A. include the SQL statements in the body of the task create task mytask.. as insert into target1 select., from stream_s1 where ..INSERT INTO target2 SELECT .. FROM stream .s1 where ..
- B. A stored procedure can have only one DML statement per stored procedure invocation and therefore you should sequence stored procedures calls in the task definition CREATE TASK mytask.... AS call stored_prc1(); call stored_proc2t);
- C. A stored procedure executing multiple SQL statements and invoke the stored procedure from the task.CREATE TASK mytask.... AS callstored_proc_multiple_statements_inside());
- D. Create a task for each SQL statement (e.
- E. resulting in task1. task2, etc) and string the series of SQL statements by having a control task calling task 1, task 2 sequentially.

Answer: C

NEW QUESTION 133

- (Exam Topic 1)

Query results are stored in the Result Cache for how long after they are last accessed, assuming no data changes have occurred? Select one.

- A. 1 Hour
- B. 3 Hours
- C. 12 hours
- D. 24 hours

Answer: D

Explanation:

Reference: <https://community.snowflake.com/s/article/Caching-in-Snowflake-Data-Warehouse>

NEW QUESTION 138

- (Exam Topic 1)

What are the three things customers want most from their enterprise data warehouse solution? Choose 3 answers

- A. On-premise availability
- B. Simplicity
- C. Open source based
- D. Concurrency
- E. Performance

Answer: BDE

NEW QUESTION 142

- (Exam Topic 1)

Snowflake is designed for which type of workloads? (Choose two.)

- A. OLAP (Analytics) workloads
- B. OLTP (Transactional) workloads
- C. Concurrent workloads
- D. On-premise workloads

Answer: AC

Explanation:

Reference: <https://blog.couchbase.com/its-the-workload-stupid/>

<https://www.quora.com/Can-Snowflake-be-used-for-an-OLTP-system-or-is-it-only-best-suited-for-warehousing>

NEW QUESTION 146

- (Exam Topic 1)

True or False: Snowflake's data warehouse was built from the ground up for the cloud in lieu of using an existing database or a platform, like Hadoop, as a base.

- A. True
- B. False

Answer: B

Explanation:

Reference: <https://docs.snowflake.com/en/user-guide/intro-key-concepts.html>

NEW QUESTION 148

- (Exam Topic 1)

What is the maximum compressed row size in Snowflake?

- A. 8KB
- B. 16MB
- C. 50MB
- D. 4000GB

Answer: B

Explanation:

MAX size for compressed data for semi-structured data type is also 16 MB. That means if our table has a semi-structured data type column with 16MB data other columns will have NULL data.

NEW QUESTION 153

- (Exam Topic 1)

What is the minimum Snowflake edition that customers planning on storing protected information in Snowflake should consider for regulatory compliance?

- A. Standard
- B. Premier
- C. Enterprise
- D. Business Critical Edition

Answer: D

Explanation:

Reference: <https://docs.snowflake.com/en/user-guide/intro-editions.html>

NEW QUESTION 156

- (Exam Topic 1)

Which of the following are main sections of the top navigation of the Snowflake web Interface (UI)?

- A. Database
- B. Tables
- C. Warehouses
- D. Worksheets

Answer: ACD

Explanation:

Reference: <https://docs.snowflake.com/en/user-guide/snowflake-manager.html>

NEW QUESTION 159

- (Exam Topic 1)

True or False: Snowflake charges additional fees to Data providers for each share they create.

- A. True
- B. False

Answer: B

Explanation:

"The costs for sharing data with Snowflake are minimal and straightforward. Data providers simply pay Snowflake for the data they store, and data consumers pay for the compute resources their queries consume."

NEW QUESTION 160

- (Exam Topic 1)

True or False: It is possible to unload structured data to semi-structured formats such as JSON and parquet.

- A. True
- B. False

Answer: A

Explanation:

Reference: <https://docs.snowflake.com/en/user-guide/data-unload-prepare.html>

NEW QUESTION 164

- (Exam Topic 1)

Which of the following statements about data sharing are true? choose 2 answers

- A. New objects created by a Data Provider are automatically shared with existing Data Consumers & Reader Accounts
- B. All database objects can be included In a shared database
- C. Reader Accounts are created and funded by Data Prowlers
- D. Shared databases are read-only

Answer: CD

NEW QUESTION 166

- (Exam Topic 2)

How often are encryption keys automatically rotated by Snowflake?

- A. 30 Days
- B. 60 Days
- C. 90 Days
- D. 365 Days

Answer: A

Explanation:

All Snowflake-managed keys are automatically rotated by Snowflake when they are more than 30 days old. Active keys are retired, and new keys are created. When Snowflake determines the retired key is no longer needed, the key is automatically destroyed.

<https://docs.snowflake.com/en/user-guide/security-encryption-manage.html#:~:text=All%20Snowflake%2Dman>

NEW QUESTION 170

- (Exam Topic 2)

Which Snowflake technique can be used to improve the performance of a query?

- A. Clustering
- B. Indexing
- C. Fragmenting
- D. Using INDEX HINTS

Answer: A

Explanation:

<https://docs.snowflake.com/en/user-guide/tables-clustering-keys.html>

NEW QUESTION 172

- (Exam Topic 2)

Which of the following Snowflake features provide continuous data protection automatically? (Select TWO).

- A. Internal stages
- B. Incremental backups
- C. Time Travel

- D. Zero-copy clones
- E. Fail-safe

Answer: CE

Explanation:

Time travel and fail safe are the two continuous data protection features support the recovery of data automatically.

Snowflake provides powerful CDP features for ensuring the maintenance and availability of your historical data (i.e. data that has been changed or deleted):

- Querying, cloning, and restoring historical data in tables, schemas, and databases for up to 90 days through Snowflake Time Travel.
- Disaster recovery of historical data (by Snowflake) through Snowflake Fail-safe. <https://docs.snowflake.com/en/user-guide/data-availability.html>

NEW QUESTION 175

- (Exam Topic 2)

True or False: Loading data into Snowflake requires that source data files be no larger than 16MB.

- A. True
- B. False

Answer: B

Explanation:

By default, COPY INTO location statements separate table data into a set of output files to take advantage of parallel operations. The maximum size for each file is set using the MAX_FILE_SIZE copy option. The default value is 16777216 (16 MB) but can be increased to accommodate larger files. The maximum file size supported is 5 GB for Amazon S3, Google Cloud Storage, or Microsoft Azure stages. To unload data to a single output file (at the potential cost of decreased performance), specify the SINGLE = true copy option in your statement. You can optionally specify a name for the file in the path.

NEW QUESTION 179

- (Exam Topic 2)

Which statement about billing applies to Snowflake credits?

- A. Credits are billed per-minute with a 60-minute minimum
- B. Credits are used to pay for cloud data storage usage
- C. Credits are consumed based on the number of credits billed for each hour that a warehouse runs
- D. Credits are consumed based on the warehouse size and the time the warehouse is running

Answer: D

Explanation:

Snowflake credits are used to pay for the consumption of resources on Snowflake. A Snowflake credit is a unit of measure, and it is consumed only when a customer is using resources, such as when a virtual warehouse is running, the cloud services layer is performing work, or serverless features are used.

<https://docs.snowflake.com/en/user-guide/what-are-credits.html>

NEW QUESTION 181

- (Exam Topic 2)

A marketing co-worker has requested the ability to change a warehouse size on their medium virtual warehouse called mktg__WH.

Which of the following statements will accommodate this request?

- A. ALLOW RESIZE ON WAREHOUSE MKTG__WH TO USER MKTG__LEAD;
- B. GRANT MODIFY ON WAREHOUSE MKTG WH TO ROLE MARKETING;
- C. GRANT MODIFY ON WAREHOUSE MKTG__WH TO USER MKTG__LEAD;
- D. GRANT OPERATE ON WAREHOUSE MKTG WH TO ROLE MARKETING;

Answer: B

NEW QUESTION 185

- (Exam Topic 2)

Which of the following are valid methods for authenticating users for access into Snowflake? (Select THREE)

- A. SCIM
- B. Federated authentication
- C. TLS 1.2
- D. Key-pair authentication
- E. OAuth
- F. OCSP authentication

Answer: BDE

NEW QUESTION 187

- (Exam Topic 2)

Which services does the Snowflake Cloud Services layer manage? (Select TWO).

- A. Compute resources
- B. Query execution
- C. Authentication
- D. Data storage
- E. Metadata

Answer: CE

Explanation:

<https://docs.snowflake.com/en/user-guide/intro-key-concepts.html>

The cloud services layer is a collection of services that coordinate activities across Snowflake. These services tie together all of the different components of Snowflake in order to process user requests, from login to query dispatch. The cloud services layer also runs on compute instances provisioned by Snowflake from the cloud provider.

Services managed in this layer include:

- > Authentication
- > Infrastructure management
- > Metadata management
- > Query parsing and optimization
- > Access control

NEW QUESTION 189

- (Exam Topic 2)

What happens when an external or an internal stage is dropped? (Select TWO).

- A. When dropping an external stage, the files are not removed and only the stage is dropped
- B. When dropping an external stage, both the stage and the files within the stage are removed
- C. When dropping an internal stage, the files are deleted with the stage and the files are recoverable
- D. When dropping an internal stage, the files are deleted with the stage and the files are not recoverable
- E. When dropping an internal stage, only selected files are deleted with the stage and are not recoverable

Answer: AC

NEW QUESTION 194

- (Exam Topic 2)

A developer is granted ownership of a table that has a masking policy. The developer's role is not able to see the masked data. Will the developer be able to modify the table to read the masked data?

- A. Yes, because a table owner has full control and can unset masking policies.
- B. Yes, because masking policies only apply to cloned tables.
- C. No, because masking policies must always reference specific access roles.
- D. No, because ownership of a table does not include the ability to change masking policies

Answer: A

NEW QUESTION 196

- (Exam Topic 2)

When reviewing the load for a warehouse using the load monitoring chart, the chart indicates that a high volume of Queries are always queuing in the warehouse. According to recommended best practice, what should be done to reduce the Queue volume? (Select TWO).

- A. Use multi-clustered warehousing to scale out warehouse capacity.
- B. Scale up the warehouse size to allow Queries to execute faster.
- C. Stop and start the warehouse to clear the queued queries
- D. Migrate some queries to a new warehouse to reduce load
- E. Limit user access to the warehouse so fewer queries are run against it.

Answer: AD

NEW QUESTION 200

- (Exam Topic 2)

What is a responsibility of Snowflake's virtual warehouses?

- A. Infrastructure management
- B. Metadata management
- C. Query execution
- D. Query parsing and optimization
- E. Management of the storage layer

Answer: C

NEW QUESTION 204

- (Exam Topic 2)

True or False: A Virtual Warehouse can be resized while suspended.

- A. True
- B. False

Answer: A

Explanation:

Reference:

<https://docs.snowflake.com/en/user-guide/warehouses-tasks.html#effects-of-resizing-a-suspended-warehouse>

NEW QUESTION 207

- (Exam Topic 2)

The fail-safe retention period is how many days?

- A. 1 day
- B. 7 days
- C. 45 days
- D. 90 days

Answer: B

Explanation:

Reference: <https://docs.snowflake.com/en/user-guide/data-failsafe.html>

NEW QUESTION 208

- (Exam Topic 2)

What features does Snowflake Time Travel enable?

- A. Querying data-related objects that were created within the past 365 days
- B. Restoring data-related objects that have been deleted within the past 90 days
- C. Conducting point-in-time analysis for BI reporting
- D. Analyzing data usage/manipulation over all periods of time

Answer: B

Explanation:

Snowflake Time Travel enables accessing historical data (i.e. data that has been changed or deleted) at any point within a defined period. It serves as a powerful tool for performing the following tasks:

- Restoring data-related objects (tables, schemas, and databases) that might have been accidentally or intentionally deleted.
- Duplicating and backing up data from key points in the past.
- Analyzing data usage/manipulation over specified periods of time.

<https://docs.snowflake.com/en/user-guide/data-time-travel.html>

NEW QUESTION 209

- (Exam Topic 2)

A sales table FCT_SALES has 100 million records. The following Query was executed

```
SELECT COUNT (1) FROM FCT__SALES;
```

How did Snowflake fulfill this query?

- A. Query against the result set cache
- B. Query against a virtual warehouse cache
- C. Query against the most-recently created micro-partition
- D. Query against the metadata excite

Answer: D

NEW QUESTION 213

- (Exam Topic 2)

Which of the following conditions must be met in order to return results from the results cache? (Select TWO).

- A. The user has the appropriate privileges on the objects associated with the query
- B. Micro-partitions have been reclustered since the query was last run
- C. The new query is run using the same virtual warehouse as the previous query
- D. The query includes a User Defined Function (UDF)
- E. The query has been run within 24 hours of the previously-run query

Answer: AE

NEW QUESTION 214

- (Exam Topic 2)

Which Snowflake objects track DML changes made to tables, like inserts, updates, and deletes?

- A. Pipes
- B. Streams
- C. Tasks
- D. Procedures

Answer: B

Explanation:

[https://dataterrain.com/how-to-change-tracking-using-table-streams-in-snowflake/#:~:text=A%20stream%20is%](https://dataterrain.com/how-to-change-tracking-using-table-streams-in-snowflake/#:~:text=A%20stream%20is%20)

NEW QUESTION 216

- (Exam Topic 2)

Which command is used to unload data from a Snowflake table into a file in a stage?

- A. COPY INTO

- B. GET
- C. WRITE
- D. EXTRACT INTO

Answer: A

Explanation:

<https://docs.snowflake.com/en/user-guide/data-unload-snowflake.html#:~:text=Your%20User%20Stage-,Use%2>

NEW QUESTION 218

- (Exam Topic 2)

Which of the following can be executed/called with Snowpipe?

- A. A User Defined Function (UDF)
- B. A stored procedure
- C. A single copy_into statement
- D. A single insert__into statement

Answer: C

NEW QUESTION 223

- (Exam Topic 2)

Which of the following describes external functions in Snowflake?

- A. They are a type of User-defined Function (UDF).
- B. They contain their own SQL code.
- C. They call code that is stored inside of Snowflake.
- D. They can return multiple rows for each row received

Answer: A

Explanation:

External functions are user-defined functions that are stored and executed outside of Snowflake.

External functions make it easier to access external API services such as geocoders, machine learning models, and other custom code running outside of Snowflake. This feature eliminates the need to export and reimport data when using third-party services, significantly simplifying your data pipelines.

<https://docs.snowflake.com/en/sql-reference/external-functions.html#:~:text=External%20functions%20are%20>

NEW QUESTION 228

- (Exam Topic 2)

Which semi-structured file formats are supported when unloading data from a table? (Select TWO).

- A. ORC
- B. XML
- C. Avro
- D. Parquet
- E. JSON

Answer: DE

Explanation:

Semi-structured JSON, Parquet

<https://docs.snowflake.com/en/user-guide/data-unload-prepare.html#:~:text=Supported%20File%20Formats,-Th>

NEW QUESTION 229

- (Exam Topic 2)

A user unloaded a Snowflake table called mytable to an internal stage called mystage. Which command can be used to view the list of files that has been uploaded to the staged?

- A. list @mytable;
- B. list @%raytable;
- C. list @ %m.ystage;
- D. list @mystage;

Answer: D

NEW QUESTION 230

- (Exam Topic 2)

Which command can be used to load data into an internal stage?

- A. LOAD
- B. copy
- C. GET
- D. PUT

Answer: D

Explanation:

<https://medium.com/@divyanshsaxenaofficial/snowflake-loading-unloading-of-data-part-1-internal-stages-7121>

NEW QUESTION 235

- (Exam Topic 2)

Which Snowflake object enables loading data from files as soon as they are available in a cloud storage location?

- A. Pipe
- B. External stage
- C. Task
- D. Stream

Answer: A

Explanation:

Snowpipe enables loading data from files as soon as they're available in a stage. This means you can load data from files in micro-batches, making it available to users within minutes, rather than manually executing COPY statements on a schedule to load larger batches.

<https://docs.snowflake.com/en/user-guide/data-load-snowpipe-intro.html>

NEW QUESTION 236

- (Exam Topic 2)

What happens when a virtual warehouse is resized?

- A. When increasing the size of an active warehouse the compute resource for all running and queued queries on the warehouse are affected
- B. When reducing the size of a warehouse the compute resources are removed only when they are no longer being used to execute any current statements.
- C. The warehouse will be suspended while the new compute resource is provisioned and will resume automatically once provisioning is complete.
- D. Users who are trying to use the warehouse will receive an error message until the resizing is complete

Answer: B

NEW QUESTION 240

- (Exam Topic 2)

Which of the following objects can be shared through secure data sharing?

- A. Masking policy
- B. Stored procedure
- C. Task
- D. External table

Answer: D

Explanation:

Secure Data Sharing enables sharing selected objects in a database in your account with other Snowflake accounts. The following Snowflake database objects can be shared:

- > Tables
- > External tables
- > Secure views
- > Secure materialized views
- > Secure UDFs

Snowflake enables the sharing of databases through shares, which are created by data providers and "imported" by data consumers.

<https://docs.snowflake.com/en/user-guide/data-sharing-intro.html#:~:text=Secure%20Data%20Sharing%20enab>

NEW QUESTION 241

- (Exam Topic 2)

When reviewing a query profile, what is a symptom that a query is too large to fit into the memory?

- A. A single join node uses more than 50% of the query time
- B. Partitions scanned is equal to partitions total
- C. An AggregateOperator node is present
- D. The query is spilling to remote storage

Answer: D

NEW QUESTION 242

- (Exam Topic 2)

What are the default Time Travel and Fail-safe retention periods for transient tables?

- A. Time Travel - 1 da
- B. Fail-safe - 1 day
- C. Time Travel - 0 day
- D. Fail-safe - 1 day
- E. Time Travel - 1 da
- F. Fail-safe - 0 days
- G. Transient tables are retained in neither Fail-safe nor Time Travel

Answer: C

Explanation:

<https://docs.snowflake.com/en/user-guide/data-cdp-storage-costs.html#:~:text=Temporary%20and%20Transient>

NEW QUESTION 243

- (Exam Topic 2)

Which command can be used to stage local files from which Snowflake interface?

- A. SnowSQL
- B. Snowflake classic web interface (UI)
- C. Snowsight
- D. .NET driver

Answer: A

Explanation:

<https://docs.snowflake.com/en/user-guide/snowsql-use.html>

NEW QUESTION 245

- (Exam Topic 2)

Query compilation occurs in which architecture layer of the Snowflake Cloud Data Platform?

- A. Compute layer
- B. Storage layer
- C. Cloud infrastructure layer
- D. Cloud services layer

Answer: A

Explanation:

For query execution, Snowflake uses the Virtual Warehouse. The query processing layer is separated from the disk storage layer in the Snowflake data architecture. You can use the data from the storage layer to run queries in this layer

<https://www.projectpro.io/article/snowflake-architecture-what-does-snowflake-do/556#:~:text=Query%20Proce>

NEW QUESTION 249

- (Exam Topic 2)

The Information Schema and Account Usage Share provide storage information for which of the following objects? (Choose three.)

- A. Users
- B. Tables
- C. Databases
- D. Internal Stages

Answer: ABC

NEW QUESTION 251

- (Exam Topic 2)

True or False: Fail-safe can be disabled within a Snowflake account.

- A. True
- B. False

Answer: B

Explanation:

Reference: <https://docs.snowflake.com/en/user-guide/data-failsafe.html>

Separate and distinct from Time Travel, Fail-safe ensures historical data is protected in the event of a system failure or other catastrophic event, e.g. a hardware failure or security breach. Fail safe feature cannot be enabled or disabled from the user end .

NEW QUESTION 256

- (Exam Topic 2)

Which of the following compute resources or features are managed by Snowflake? (Select TWO).

- A. Execute a COPY command
- B. Updating data
- C. Snowpipe
- D. AUTOMATIC__CLUSTERING
- E. Scaling up a warehouse

Answer: AD

NEW QUESTION 259

- (Exam Topic 2)

True or False: When you create a custom role, it is a best practice to immediately grant that role to ACCOUNTADMIN.

- A. True
- B. False

Answer: B

Explanation:

Reference: <https://docs.snowflake.com/en/user-guide/security-access-control-considerations.html>

NEW QUESTION 262

- (Exam Topic 2)

Which cache type is used to cache data output from SQL queries?

- A. Metadata cache
- B. Result cache
- C. Remote cache
- D. Local file cache

Answer: B

Explanation:

<https://community.snowflake.com/s/article/Caching-in-Snowflake-Data-Warehouse>

NEW QUESTION 267

- (Exam Topic 2)

A user is loading JSON documents composed of a huge array containing multiple records into Snowflake. The user enables the strip outer_array file format option. What does the STRIP_OUTER_ARRAY file format do?

- A. It removes the last element of the outer array.
- B. It removes the outer array structure and loads the records into separate table rows.
- C. It removes the trailing spaces in the last element of the outer array and loads the records into separate table columns.
- D. It removes the NULL elements from the JSON object eliminating invalid data and enables the ability to load the records.

Answer: B

Explanation:

Data Size Limitations

The VARIANT data type imposes a 16 MB size limit on individual rows.

For some semi-structured data formats (e.g. JSON), data sets are frequently a simple concatenation of multiple documents. The JSON output from some software is composed of a single huge array containing multiple records. There is no need to separate the documents with line breaks or commas, though both are supported.

If the data exceeds 16 MB, enable the STRIP_OUTER_ARRAY file format option for the COPY INTO

<table> command to remove the outer array structure and load the records into separate table rows:

copy into <table> from @~/<file>.json

file_format = (type = 'JSON' strip_outer_array = true); <https://docs.snowflake.com/en/user-guide/semistructured-considerations.html>

NEW QUESTION 271

- (Exam Topic 2)

What is a limitation of a Materialized View?

- A. A Materialized View cannot support any aggregate functions
- B. A Materialized View can only reference up to two tables
- C. A Materialized View cannot be joined with other tables
- D. A Materialized View cannot be defined with a JOIN

Answer: D

Explanation:

There are several limitations to using materialized views:

- A materialized view can query only a single table.
- Joins, including self-joins, are not supported.

NEW QUESTION 273

- (Exam Topic 2)

What Snowflake features allow virtual warehouses to handle high concurrency workloads? (Select TWO)

- A. The ability to scale up warehouses
- B. The use of warehouse auto scaling
- C. The ability to resize warehouses
- D. Use of multi-clustered warehouses
- E. The use of warehouse indexing

Answer: BD

NEW QUESTION 275

- (Exam Topic 2)

Which of the following are best practice recommendations that should be considered when loading data into Snowflake? (Select TWO).

- A. Load files that are approximately 25 MB or smaller.
- B. Remove all dates and timestamps.
- C. Load files that are approximately 100-250 MB (or larger)

- D. Avoid using embedded characters such as commas for numeric data types
- E. Remove semi-structured data types

Answer: CD

Explanation:

<https://docs.snowflake.com/en/user-guide/data-load-considerations-prepare.html>

NEW QUESTION 278

- (Exam Topic 2)

What is a key feature of Snowflake architecture?

- A. Zero-copy cloning creates a mirror copy of a database that updates with the original
- B. Software updates are automatically applied on a quarterly basis
- C. Snowflake eliminates resource contention with its virtual warehouse implementation
- D. Multi-cluster warehouses allow users to run a query that spans across multiple clusters
- E. Snowflake automatically sorts DATE columns during ingest for fast retrieval by date

Answer: D

NEW QUESTION 281

- (Exam Topic 2)

What is the default File Format used in the COPY command if one is not specified?

- A. CSV
- B. JSON
- C. Parquet
- D. XML

Answer: A

Explanation:

Reference: <https://docs.snowflake.com/en/sql-reference/sql/copy-into-location.html>

NEW QUESTION 283

- (Exam Topic 2)

A virtual warehouse's auto-suspend and auto-resume settings apply to which of the following?

- A. The primary cluster in the virtual warehouse
- B. The entire virtual warehouse
- C. The database in which the virtual warehouse resides
- D. The Queries currently being run on the virtual warehouse

Answer: B

Explanation:

<https://docs.snowflake.com/en/user-guide/warehouses-overview.html#:~:text=Similarly%2C%20auto%2Dresum>

NEW QUESTION 288

- (Exam Topic 2)

When is the result set cache no longer available? (Select TWO)

- A. When another warehouse is used to execute the query
- B. When another user executes the query
- C. When the underlying data has changed
- D. When the warehouse used to execute the query is suspended
- E. When it has been 24 hours since the last query

Answer: CE

NEW QUESTION 290

- (Exam Topic 2)

What are two ways to create and manage Data Shares in Snowflake? (Choose two.)

- A. Via the Snowflake Web Interface (UI)
- B. Via the data_share=true parameter
- C. Via SQL commands
- D. Via Virtual Warehouses

Answer: AC

Explanation:

Reference: <https://docs.snowflake.com/en/user-guide/data-sharing-provider.html>

NEW QUESTION 294

- (Exam Topic 2)

Which feature is only available in the Enterprise or higher editions of Snowflake?

- A. Column-level security
- B. SOC 2 type II certification
- C. Multi-factor Authentication (MFA)
- D. Object-level access control

Answer: A

Explanation:

<https://docs.snowflake.com/en/user-guide/intro-editions.html>

NEW QUESTION 295

- (Exam Topic 2)

What tasks can be completed using the copy command? (Select TWO)

- A. Columns can be aggregated
- B. Columns can be joined with an existing table
- C. Columns can be reordered
- D. Columns can be omitted
- E. Data can be loaded without the need to spin up a virtual warehouse

Answer: CD

NEW QUESTION 298

- (Exam Topic 2)

What transformations are supported in a CREATE PIPE ... AS COPY ... FROM (....) statement? (Select TWO.)

- A. Data can be filtered by an optional where clause
- B. Incoming data can be joined with other tables
- C. Columns can be reordered
- D. Columns can be omitted
- E. Row level access can be defined

Answer: CD

NEW QUESTION 302

- (Exam Topic 3)

Which methods can be used to delete staged files from a Snowflake stage? (Choose two.)

- A. Use the DROP <file> command after the load completes.
- B. Specify the TEMPORARY option when creating the file format.
- C. Specify the PURGE copy option in the COPY INTO <table> command.
- D. Use the REMOVE command after the load completes.
- E. Use the DELETE LOAD HISTORY command after the load completes.

Answer: CD

NEW QUESTION 304

- (Exam Topic 3)

Which command should be used to load data from a file, located in an external stage, into a table in Snowflake?

- A. INSERT
- B. PUT
- C. GET
- D. COPY

Answer: D

NEW QUESTION 308

- (Exam Topic 3)

Where is Snowflake metadata stored?

- A. Within the data files
- B. In the virtual warehouse layer
- C. In the cloud services layer
- D. In the remote storage layer

Answer: B

Explanation:

Reference:

<https://docs.snowflake.com/en/user-guide/querying-metadata.html#:~:text=Snowflake%20automatically%20gen>

NEW QUESTION 310

- (Exam Topic 3)

What is the recommended compressed file size range for continuous data loads using Snowpipe?

- A. 8-16 MB
- B. 16-24 MB
- C. 10-99 MB
- D. 100-250 MB

Answer: B

NEW QUESTION 312

- (Exam Topic 3)

A user created a new worksheet within the Snowsight UI and wants to share this with teammates How can this worksheet be shared?

- A. Create a zero-copy clone of the worksheet and grant permissions to teammates
- B. Create a private Data Exchange so that any teammate can use the worksheet
- C. Share the worksheet with teammates within Snowsight
- D. Create a database and grant all permissions to teammates

Answer: C

NEW QUESTION 315

- (Exam Topic 3)

A single user of a virtual warehouse has set the warehouse to auto-resume and auto-suspend after 10 minutes. The warehouse is currently suspended and the user performs the following actions:

- * 1. Runs a query that takes 3 minutes to complete
- * 2. Leaves for 15 minutes
- * 3. Returns and runs a query that takes 10 seconds to complete
- * 4. Manually suspends the warehouse as soon as the last query was completed

When the user returns, how much billable compute time will have been consumed?

- A. 4 minutes
- B. 10 minutes
- C. 14 minutes
- D. 24 minutes

Answer: C

NEW QUESTION 319

- (Exam Topic 3)

What are the responsibilities of Snowflake's Cloud Service layer? (Choose three.)

- A. Authentication
- B. Resource management
- C. Virtual warehouse caching
- D. Query parsing and optimization
- E. Query execution
- F. Physical storage of micro-partitions

Answer: ADE

NEW QUESTION 322

- (Exam Topic 3)

What is the minimum Snowflake edition that has column-level security enabled?

- A. Standard
- B. Enterprise
- C. Business Critical
- D. Virtual Private Snowflake

Answer: B

NEW QUESTION 325

- (Exam Topic 3)

Snowflake supports the use of external stages with which cloud platforms? (Choose three.)

- A. Amazon Web Services
- B. Docker
- C. IBM Cloud
- D. Microsoft Azure Cloud
- E. Google Cloud Platform
- F. Oracle Cloud

Answer: BDE

NEW QUESTION 327

- (Exam Topic 3)

How many days is load history for Snowpipe retained?

- A. 1 day
- B. 7 days
- C. 14 days
- D. 64 days

Answer: C

NEW QUESTION 332

- (Exam Topic 3)

What is the MINIMUM Snowflake edition required to use the periodic rekeying of micro-partitions?

- A. Enterprise
- B. Business Critical
- C. Standard
- D. Virtual Private Snowflake

Answer: B

Explanation:

Reference: <https://docs.snowflake.com/en/user-guide/intro-editions.html#business-critical-edition>

NEW QUESTION 335

- (Exam Topic 3)

Which statements are true concerning Snowflake's underlying cloud infrastructure? (Select THREE),

- A. Snowflake data and services are deployed in a single availability zone within a cloud provider's region.
- B. Snowflake data and services are available in a single cloud provider and a single region, the use of multiple cloud providers is not supported.
- C. Snowflake can be deployed in a customer's private cloud using the customer's own compute and storage resources for Snowflake compute and storage
- D. Snowflake uses the core compute and storage services of each cloud provider for its own compute and storage
- E. All three layers of Snowflake's architecture (storage, compute, and cloud services) are deployed and managed entirely on a selected cloud platform
- F. Snowflake data and services are deployed in at least three availability zones within a cloud provider's region

Answer: DEF

NEW QUESTION 340

- (Exam Topic 3)

The bulk data load history that is available upon completion of the COPY statement is stored where and for how long?

- A. In the metadata of the target table for 14 days
- B. In the metadata of the pipe for 14 days
- C. In the metadata of the target table for 64 days
- D. In the metadata of the pipe for 64 days

Answer: A

NEW QUESTION 343

- (Exam Topic 3)

What COPY INTO SQL command should be used to unload data into multiple files?

- A. SINGLE=TRUE
- B. MULTIPLE=TRUE
- C. MULTIPLE=FALSE
- D. SINGLE=FALSE

Answer: C

NEW QUESTION 346

- (Exam Topic 3)

What is the MINIMUM edition of Snowflake that is required to use a SCIM security integration?

- A. Business Critical Edition
- B. Standard Edition
- C. Virtual Private Snowflake (VPS)
- D. Enterprise Edition

Answer: D

NEW QUESTION 350

- (Exam Topic 3)

How long is the Fail-safe period for temporary and transient tables?

- A. There is no Fail-safe period for these tables.
- B. 1 day
- C. 7 days
- D. 31 days
- E. 90 days

Answer: A

Explanation:

Reference: <https://docs.snowflake.com/en/user-guide/tables-temp-transient.html>

NEW QUESTION 354

- (Exam Topic 3)

Which of the following are considerations when using a directory table when working with unstructured data? (Choose two.)

- A. A directory table is a separate database object.
- B. Directory tables store data file metadata.
- C. A directory table will be automatically added to a stage.
- D. Directory tables do not have their own grantable privileges.
- E. Directory table data can not be refreshed manually.

Answer: BD

NEW QUESTION 358

- (Exam Topic 3)

The Snowflake Search Optimization Services supports improved performance of which kind of query?

- A. Queries against large tables where frequent DML occurs
- B. Queries against tables larger than 1 TB
- C. Selective point lookup queries
- D. Queries against a subset of columns in a table

Answer: C

Explanation:

Reference:

[https://docs.snowflake.com/en/user-guide/search-optimization-service.html#:~:text=The%20search%20optimiza%20point,OBJECT%2C%20and%20ARRAY%20columns\)](https://docs.snowflake.com/en/user-guide/search-optimization-service.html#:~:text=The%20search%20optimiza%20point,OBJECT%2C%20and%20ARRAY%20columns))

NEW QUESTION 359

- (Exam Topic 3)

Credit charges for Snowflake virtual warehouses are calculated based on which of the following considerations? (Choose two.)

- A. The number of queries executed
- B. The number of active users assigned to the warehouse
- C. The size of the virtual warehouse
- D. The length of time the warehouse is running
- E. The duration of the queries that are executed

Answer: AD

NEW QUESTION 364

- (Exam Topic 3)

A data provider wants to share data with a consumer who does not have a Snowflake account. The provider creates a reader account for the consumer following these steps:

- * 1. Created a user called "CONSUMER"
- * 2. Created a database to hold the share and an extra-small warehouse to query the data
- * 3. Granted the role PUBLIC the following privileges: Usage on the warehouse, database, and schema, and SELECT on all the objects in the share

Based on this configuration what is true of the reader account?

- A. The reader account will automatically use the Standard edition of Snowflake.
- B. The reader account compute will be billed to the provider account.
- C. The reader account can clone data the provider has shared, but cannot re-share it.
- D. The reader account can create a copy of the shared data using CREATE TABLE AS...

Answer: C

NEW QUESTION 369

- (Exam Topic 3)

Query parsing and compilation occurs in which architecture layer of the Snowflake Cloud Data Platform?

- A. Cloud services layer
- B. Compute layer
- C. Storage layer
- D. Cloud agnostic layer

Answer: B

Explanation:

Reference: <https://www.projectpro.io/article/snowflake-architecture-what-does-snowflake-do/556>

NEW QUESTION 372

- (Exam Topic 3)

Which of the following are characteristics of security in Snowflake?

- A. Account and user authentication is only available with the Snowflake Business Critical edition.
- B. Support for HIPAA and GDPR compliance is available for UI Snowflake editions.
- C. Periodic rekeying of encrypted data is available with the Snowflake Enterprise edition and higher
- D. Private communication to internal stages is allowed in the Snowflake Enterprise edition and higher.

Answer: C

NEW QUESTION 373

- (Exam Topic 3)

What is the purpose of multi-cluster virtual warehouses?

- A. To create separate data warehouses to increase query optimization
- B. To allow users the ability to choose the type of compute nodes that make up a virtual warehouse cluster
- C. To eliminate or reduce Queuing of concurrent queries
- D. To allow the warehouse to resize automatically

Answer: C

Explanation:

<https://docs.snowflake.com/en/user-guide/warehouses-multicluster.html#:~:text=Multi%2Dcluster%20warehous>

NEW QUESTION 374

- (Exam Topic 3)

Which stages are used with the Snowflake PUT command to upload files from a local file system? (Choose three.)

- A. Schema Stage
- B. User Stage
- C. Database Stage
- D. Table Stage
- E. External Named Stage
- F. Internal Named Stage

Answer: AEF

NEW QUESTION 376

- (Exam Topic 3)

How can a user change which columns are referenced in a view?

- A. Modify the columns in the underlying table
- B. Use the ALTER VIEW command to update the view
- C. Recreate the view with the required changes
- D. Materialize the view to perform the changes

Answer: B

NEW QUESTION 377

- (Exam Topic 3)

When publishing a Snowflake Data Marketplace listing into a remote region what should be taken into consideration? (Choose two.)

- A. There is no need to have a Snowflake account in the target region, a share will be created for each user.
- B. The listing is replicated into all selected regions automatically, the data is not.
- C. The user must have the ORGADMIN role available in at least one account to link accounts for replication.
- D. Shares attached to listings in remote regions can be viewed from any account in an organization.
- E. For a standard listing the user can wait until the first customer requests the data before replicating it to the target region.

Answer: AC

NEW QUESTION 378

- (Exam Topic 3)

What actions will prevent leveraging of the ResultSet cache? (Choose two.)

- A. Removing a column from the query SELECT list
- B. Stopping the virtual warehouse that the query is running against
- C. Clustering of the data used by the query
- D. Executing the RESULTS_SCAN() table function
- E. Changing a column that is not in the cached query

Answer: AD

NEW QUESTION 379

- (Exam Topic 3)

A company needs to read multiple terabytes of data for an initial load as part of a Snowflake migration. The company can control the number and size of CSV extract files.

How does Snowflake recommend maximizing the load performance?

- A. Use auto-ingest Snowpipes to load large files in a serverless model.
- B. Produce the largest files possible, reducing the overall number of files to process.
- C. Produce a larger number of smaller files and process the ingestion with size Small virtual warehouses.
- D. Use an external tool to issue batched row-by-row inserts within BEGIN TRANSACTION and COMMIT commands.

Answer: B

NEW QUESTION 384

- (Exam Topic 3)

Which statement describes pruning?

- A. The filtering or disregarding of micro-partitions that are not needed to return a query.
- B. The return of micro-partitions values that overlap with each other to reduce a query's runtime.
- C. A service that is handled by the Snowflake Cloud Services layer to optimize caching.
- D. The ability to allow the result of a query to be accessed as if it were a table.

Answer: A

NEW QUESTION 385

- (Exam Topic 3)

Which of the following is a data tokenization integration partner?

- A. Protegrity
- B. Tableau
- C. DBeaver
- D. SAP

Answer: A

NEW QUESTION 386

- (Exam Topic 3)

Which of the following are characteristics of Snowflake virtual warehouses? (Choose two.)

- A. Auto-resume applies only to the last warehouse that was started in a multi-cluster warehouse.
- B. The ability to auto-suspend a warehouse is only available in the Enterprise edition or above.
- C. SnowSQL supports both a configuration file and a command line option for specifying a default warehouse.
- D. A user cannot specify a default warehouse when using the ODBC driver.
- E. The default virtual warehouse size can be changed at any time.

Answer: A

NEW QUESTION 388

- (Exam Topic 3)

Which tasks are performed in the Snowflake Cloud Services layer? (Choose two.)

- A. Management of metadata
- B. Computing the data
- C. Maintaining Availability Zones
- D. Infrastructure security
- E. Parsing and optimizing queries

Answer: AE

NEW QUESTION 391

- (Exam Topic 3)

Which statement describes how Snowflake supports reader accounts?

- A. A reader account can consume data from the provider account that created it and combine it with its own data.
- B. A consumer needs to become a licensed Snowflake customer as data sharing is only supported between Snowflake accounts.
- C. The users in a reader account can query data that has been shared with the reader account and can perform DML tasks.
- D. The SHOW MANAGED ACCOUNTS command will view all the reader accounts that have been created for an account.

Answer: C

NEW QUESTION 393

- (Exam Topic 3)

A Snowflake user executed a query and received the results. Another user executed the same query 4 hours later. The data had not changed. What will occur?

- A. No virtual warehouse will be used, data will be read from the result cache.
- B. No virtual warehouse will be used, data will be read from the local disk cache.
- C. The default virtual warehouse will be used to read all data.
- D. The virtual warehouse that is defined at the session level will be used to read all data.

Answer: A

NEW QUESTION 397

- (Exam Topic 3)

A user has unloaded data from a Snowflake table to an external stage.

Which command can be used to verify if data has been uploaded to the external stage named my_stage?

- A. view @my_stage
- B. list @my_stage
- C. show @my_stage
- D. display @my_stage

Answer: B

NEW QUESTION 400

- (Exam Topic 3)

When loading data into Snowflake, how should the data be organized?

- A. Into single files with 100-250 MB of compressed data per file
- B. Into single files with 1-100 MB of compressed data per file
- C. Into files of maximum size of 1 GB of compressed data per file
- D. Into files of maximum size of 4 GB of compressed data per file

Answer: A

NEW QUESTION 404

- (Exam Topic 3)

Which of the following accurately describes shares?

- A. Tables, secure views, and secure UDFs can be shared
- B. Shares can be shared
- C. Data consumers can clone a new table from a share
- D. Access to a share cannot be revoked once granted

Answer: A

NEW QUESTION 405

- (Exam Topic 3)

What is a responsibility of Snowflake's virtual warehouses?

- A. Infrastructure management
- B. Metadata management
- C. Query execution
- D. Query parsing and optimization
- E. Permanent storage of micro-partitions

Answer: C

Explanation:

Reference:

<https://docs.snowflake.com/en/user-guide/warehouses.html#:~:text=A%20warehouse%20provides%20the%20re>

NEW QUESTION 409

- (Exam Topic 3)

Which statements reflect key functionalities of a Snowflake Data Exchange? (Choose two.)

- A. If an account is enrolled with a Data Exchange, it will lose its access to the Snowflake Marketplace.
- B. A Data Exchange allows groups of accounts to share data privately among the accounts.
- C. A Data Exchange allows accounts to share data with third, non-Snowflake parties.
- D. Data Exchange functionality is available by default in accounts using the Enterprise edition or higher.
- E. The sharing of data in a Data Exchange is bidirectional
- F. An account can be a provider for some datasets and a consumer for others.

Answer: B

NEW QUESTION 412

- (Exam Topic 3)

A running virtual warehouse is suspended.

What is the MINIMUM amount of time that the warehouse will incur charges for when it is restarted?

- A. 1 second
- B. 60 seconds
- C. 5 minutes
- D. 60 minutes

Answer: B

NEW QUESTION 413

- (Exam Topic 3)

How are serverless features billed?

- A. Per second multiplied by an automatic sizing for the job
- B. Per minute multiplied by an automatic sizing for the job, with a minimum of one minute
- C. Per second multiplied by the size, as determined by the SERVERLESS_FEATURES_SIZE account parameter
- D. Serverless features are not billed, unless the total cost for the month exceeds 10% of the warehouse credits, on the account

Answer: D

NEW QUESTION 415

- (Exam Topic 3)

What do the terms scale up and scale out refer to in Snowflake? (Choose two.)

- A. Scaling out adds clusters of the same size to a virtual warehouse to handle more concurrent queries.
- B. Scaling out adds clusters of varying sizes to a virtual warehouse.
- C. Scaling out adds additional database servers to an existing running cluster to handle more concurrent queries.
- D. Snowflake recommends using both scaling up and scaling out to handle more concurrent queries.
- E. Scaling up resizes a virtual warehouse so it can handle more complex workloads.
- F. Scaling up adds additional database servers to an existing running cluster to handle larger workloads.

Answer: AE

NEW QUESTION 417

- (Exam Topic 3)

Users are responsible for data storage costs until what occurs?

- A. Data expires from Time Travel
- B. Data expires from Fail-safe
- C. Data is deleted from a table
- D. Data is truncated from a table

Answer: B

NEW QUESTION 422

- (Exam Topic 3)

Which privilege is required for a role to be able to resume a suspended warehouse if auto-resume is not enabled?

- A. USAGE
- B. OPERATE
- C. MONITOR
- D. MODIFY

Answer: B

Explanation:

Reference:

<https://community.snowflake.com/s/question/0D50Z00008yHYdqSAG/auto-resume-operate-warehouse-privileg>

NEW QUESTION 426

- (Exam Topic 3)

By default, which Snowflake role is required to create a share?

- A. ORGADMIN
- B. SECURITYADMIN
- C. SHAREADMIN
- D. ACCOUNTADMIN

Answer: C

NEW QUESTION 429

- (Exam Topic 3)

What are best practice recommendations for using the ACCOUNTADMIN system-defined role in Snowflake? (Choose two.)

- A. Ensure all ACCOUNTADMIN roles use Multi-factor Authentication (MFA).
- B. All users granted ACCOUNTADMIN role must be owned by the ACCOUNTADMIN role.
- C. The ACCOUNTADMIN role must be granted to only one user.
- D. Assign the ACCOUNTADMIN role to at least two users, but as few as possible.
- E. All users granted ACCOUNTADMIN role must also be granted SECURITYADMIN role.

Answer: AD

NEW QUESTION 433

- (Exam Topic 3)

What affects whether the query results cache can be used?

- A. If the query contains a deterministic function

- B. If the virtual warehouse has been suspended
- C. If the referenced data in the table has changed
- D. If multiple users are using the same virtual warehouse

Answer: B

NEW QUESTION 434

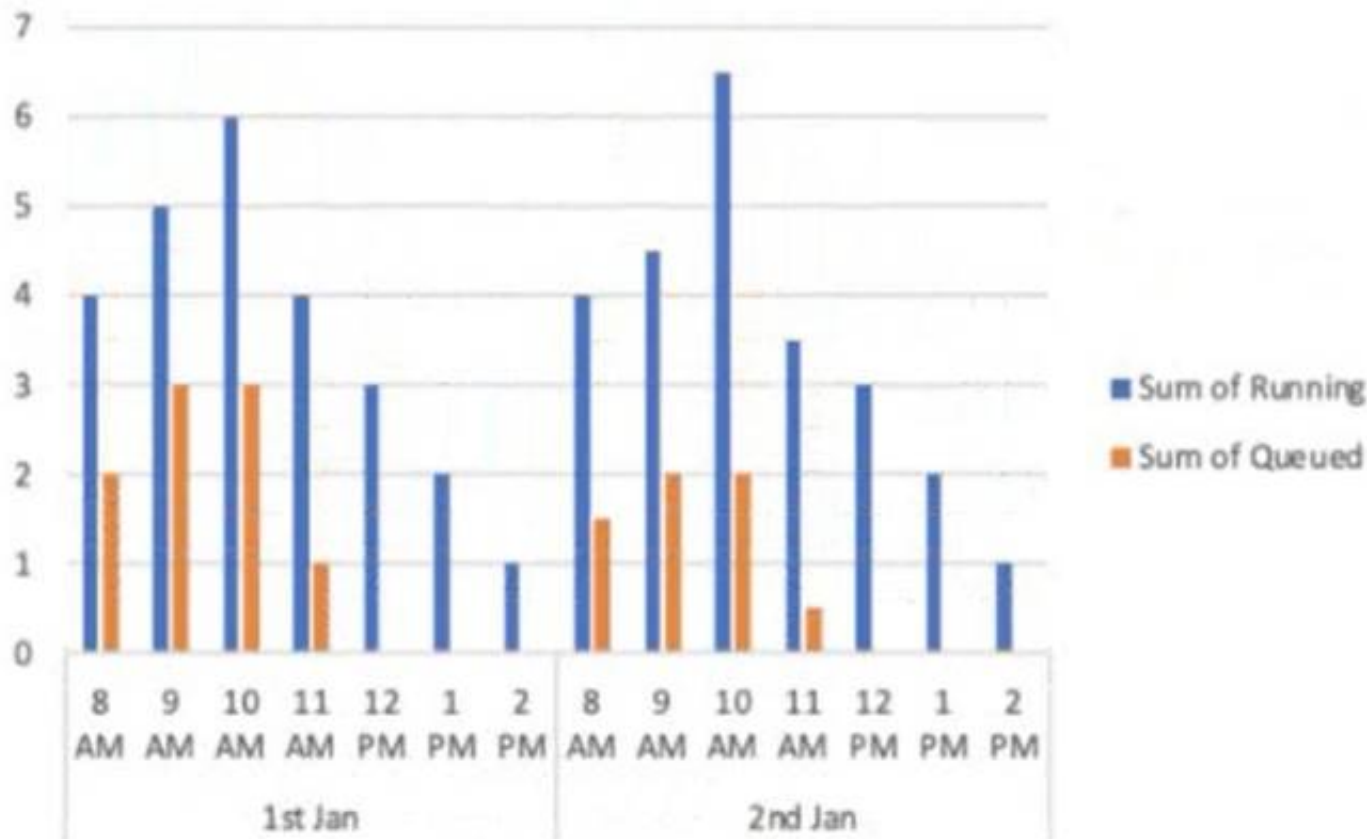
- (Exam Topic 3)

A virtual warehouse is created using the following command:

```
Create warehouse my_WH with warehouse_size = MEDIUM min_cluster_count = 1
max_cluster_count = 1
```

```
auto_suspend = 60 auto_resume = true;
```

The image below is a graphical representation of the warehouse utilization across two days.



What action should be taken to address this situation?

- A. Increase the warehouse size from Medium to 2XL.
- B. Increase the value for the parameter MAX_CONCURRENCY_LEVEL.
- C. Configure the warehouse to a multi-cluster warehouse.
- D. Lower the value of the parameter STATEMENT_QUEUED_TIMEOUT_IN_SECONDS.

Answer: B

NEW QUESTION 439

- (Exam Topic 3)

A user created a transient table and made several changes to it over the course of several days. Three days after the table was created, the user would like to go back to the first version of the table.

How can this be accomplished?

- A. Use Time Travel, as long as DATA_RETENTION_TIME_IN_DAYS was set to at least 3 days.
- B. The transient table version cannot be retrieved after 24 hours.
- C. Contact Snowflake Support to have the data retrieved from Fail-safe storage.
- D. Use the FAIL_SAFE parameter for Time Travel to retrieve the data from Fail-safe storage.

Answer: B

NEW QUESTION 440

- (Exam Topic 3)

A Snowflake Administrator needs to ensure that sensitive corporate data in Snowflake tables is not visible to end users, but is partially visible to functional managers.

How can this requirement be met?

- A. Use data encryption.
- B. Use dynamic data masking.
- C. Use secure materialized views.
- D. Revoke all roles for functional managers and end users.

Answer: B

NEW QUESTION 442

- (Exam Topic 3)

Which of the following practices are recommended when creating a user in Snowflake? (Choose two.)

- A. Configure the user to be initially disabled.

- B. Force an immediate password change.
- C. Set a default role for the user.
- D. Set the number of minutes to unlock to 15 minutes.
- E. Set the user's access to expire within a specified timeframe.

Answer: AE

NEW QUESTION 444

- (Exam Topic 3)

How would a user execute a series of SQL statements using a task?

- A. Include the SQL statements in the body of the task CREATE TASK mytask .. AS INSERT INTO target1 SELECT .. FROM stream_s1 WHERE .. INSERT INTO target2 SELECT .. FROM stream_s1 WHERE ..
- B. A stored procedure can have only one DML statement per stored procedure invocation and therefore the user should sequence stored procedure calls in the task definition CREATE TASK mytask AS call stored_proc1(); call stored_proc2();
- C. Use a stored procedure executing multiple SQL statements and invoke the stored procedure from the task
- D. CREATE TASK mytask AS call stored_proc_multiple_statements_inside();
- E. Create a task for each SQL statement (e.
- F. resulting in task1, task2, etc.) and string the series of SQL statements by having a control task calling task1, task2, et
- G. sequentially.

Answer: D

NEW QUESTION 447

- (Exam Topic 3)

True or False: Snowpipe via REST API can only reference External Stages as source.

- A. True
- B. False

Answer: B

Explanation:

Reference: <https://community.snowflake.com/s/article/Making-Transient-table-by-Default>

NEW QUESTION 451

- (Exam Topic 3)

In the Snowflake access control model, which entity owns an object by default?

- A. The user who created the object
- B. The SYSADMIN role
- C. Ownership depends on the type of object
- D. The role used to create the object

Answer: D

NEW QUESTION 456

- (Exam Topic 3)

How should a virtual warehouse be configured if a user wants to ensure that additional multi-clusters are resumed with no delay?

- A. Configure the warehouse to a size larger than generally required
- B. Set the minimum and maximum clusters to autoscale
- C. Use the standard warehouse scaling policy
- D. Use the economy warehouse scaling policy

Answer: B

NEW QUESTION 460

- (Exam Topic 3)

What privilege should a user be granted to change permissions for new objects in a managed access schema?

- A. Grant the OWNERSHIP privilege on the schema.
- B. Grant the OWNERSHIP privilege on the database.
- C. Grant the MANAGE GRANTS global privilege.
- D. Grant ALL privileges on the schema.

Answer: C

NEW QUESTION 461

- (Exam Topic 3)

Which SQL commands, when committed, will consume a stream and advance the stream offset? (Choose two.)

- A. UPDATE TABLE FROM STREAM
- B. SELECT FROM STREAM
- C. INSERT INTO TABLE SELECT FROM STREAM
- D. ALTER TABLE AS SELECT FROM STREAM
- E. BEGIN COMMIT

Answer: CD

NEW QUESTION 465

- (Exam Topic 3)

Network policies can be set at which Snowflake levels? (Choose two.)

- A. Role
- B. Schema
- C. User
- D. Database
- E. Account
- F. Tables

Answer: CE

Explanation:

Reference: <https://docs.snowflake.com/en/user-guide/network-policies.html#creating-network-policies>

NEW QUESTION 469

- (Exam Topic 3)

What are advantages clones have over tables created with CREATE TABLE AS SELECT statement? (Choose two.)

- A. The clone always stays in sync with the original table.
- B. The clone has better query performance.
- C. The clone is created almost instantly.
- D. The clone will have time travel history from the original table.
- E. The clone saves space by not duplicating storage.

Answer: CE

NEW QUESTION 472

- (Exam Topic 3)

What versions of Snowflake should be used to manage compliance with Personal Identifiable Information (PII) requirements? (Choose two.)

- A. Custom Edition
- B. Virtual Private Snowflake
- C. Business Critical Edition
- D. Standard Edition
- E. Enterprise Edition

Answer: BC

NEW QUESTION 474

- (Exam Topic 3)

Which of the following are best practices for loading data into Snowflake? (Choose three.)

- A. Aim to produce data files that are between 100 MB and 250 MB in size, compressed.
- B. Load data from files in a cloud storage service in a different region or cloud platform from the service or region containing the Snowflake account, to save on cost.
- C. Enclose fields that contain delimiter characters in single or double quotes.
- D. Split large files into a greater number of smaller files to distribute the load among the compute resources in an active warehouse.
- E. When planning which warehouse(s) to use for data loading, start with the largest warehouse possible.
- F. Partition the staged data into large folders with random paths, allowing Snowflake to determine the bestway to load each file.

Answer: BCE

NEW QUESTION 476

- (Exam Topic 3)

How would a user run a multi-cluster warehouse in maximized mode?

- A. Configure the maximum clusters setting to "Maximum."
- B. Turn on the additional clusters manually after starting the warehouse.
- C. Set the minimum Clusters and maximum Clusters settings to the same value.
- D. Set the minimum clusters and maximum clusters settings to different values.

Answer: D

NEW QUESTION 479

- (Exam Topic 3)

Which database objects can be shared with the Snowflake secure data sharing feature? (Choose two.)

- A. Files
- B. External tables
- C. Secure User-Defined Functions (UDFs)
- D. Sequences
- E. Streams

Answer: BC

NEW QUESTION 481

- (Exam Topic 3)

Which command sets the Virtual Warehouse for a session?

- A. COPY WAREHOUSE FROM <<config file>>;
- B. SET WAREHOUSE = <<warehouse name>>;
- C. USE WAREHOUSE <<warehouse name>>;
- D. USE VIRTUAL_WAREHOUSE <<warehouse name>>;

Answer: C

Explanation:

Reference: <https://docs.snowflake.com/en/user-guide/warehouses-tasks.html>

NEW QUESTION 486

- (Exam Topic 3)

The Snowflake Cloud Data Platform is described as having which of the following architectures?

- A. Shared-disk
- B. Shared-nothing
- C. Multi-cluster shared data
- D. Serverless query engine

Answer: C

NEW QUESTION 489

- (Exam Topic 3)

When loading data into Snowflake via Snowpipe what is the compressed file size recommendation?

- A. 10-50 MB
- B. 100-250 MB
- C. 300-500 MB
- D. 1000-1500 MB

Answer: B

NEW QUESTION 494

- (Exam Topic 3)

The Snowflake cloud services layer is responsible for which tasks? (Choose two.)

- A. Local disk caching
- B. Authentication and access control
- C. Metadata management
- D. Query processing
- E. Database storage

Answer: CD

NEW QUESTION 499

- (Exam Topic 3)

Which parameter can be used to instruct a COPY command to verify data files instead of loading them into a specified table?

- A. STRIP_NULL_VALUES
- B. SKIP_BYTE_ORDER_MARK
- C. REPLACE_INVALID_CHARACTERS
- D. VALIDATION_MODE

Answer: D

Explanation:

<https://docs.snowflake.com/en/sql-reference/sql/copy-into-table.html>

VALIDATION_MODE = RETURN_ROWS | RETURN_ERRORS | RETURN_ALL_ERRORS

String (constant) that instructs the COPY command to validate the data files instead of loading them into the

specified table; i.e. the COPY command tests the files for errors but does not load them. The command validates the data to be loaded and returns results based on the validation option specified:

NEW QUESTION 503

- (Exam Topic 3)

What is the maximum total Continuous Data Protection (CDP) charges incurred for a temporary table?

- A. 30 days
- B. 7 days
- C. 48 hours

D. 24 hours

Answer: D

NEW QUESTION 506

- (Exam Topic 3)

How does Snowflake Fail-safe protect data in a permanent table?

- A. Fail-safe makes data available up to 1 day, recoverable by user operations.
- B. Fail-safe makes data available for 7 days, recoverable by user operations.
- C. Fail-safe makes data available for 7 days, recoverable only by Snowflake Support.
- D. Fail-safe makes data available up to 1 day, recoverable only by Snowflake Support.

Answer: C

NEW QUESTION 508

- (Exam Topic 3)

In a Snowflake role hierarchy, what is the top-level role?

- A. SYSADMIN
- B. ORGADMIN
- C. ACCOUNTADMIN
- D. SECURITYADMIN

Answer: B

NEW QUESTION 513

- (Exam Topic 3)

What are the correct parameters for time travel and fail-safe in the Snowflake Enterprise Edition?

- A. Default Time Travel Retention is set to 0 days.Maximum Time Travel Retention is 30 day
- B. Fail Safe retention time is 1 day.
- C. Default Time Travel Retention is set to 1 day.Maximum Time Travel Retention is 365 day
- D. Fail Safe retention time is 7 days.
- E. Default Time Travel Retention is set to 0 days.Maximum Time Travel Retention is 90 day
- F. Fail Safe retention time is 7 days.
- G. Default Time Travel Retention is set to 1 day.Maximum Time Travel Retention is 90 day
- H. Fail Safe retention time is 7 days.
- I. Default Time Travel Retention is set to 7 days.Maximum Time Travel Retention is 1 da
- J. Fail Safe retention time is 90 days.
- K. Default Time Travel Retention is set to 90 days.Maximum Time Travel Retention is 7 day
- L. Fail Safe retention time is 356 days.

Answer: D

NEW QUESTION 514

- (Exam Topic 3)

What is the minimum Snowflake edition required for row level security?

- A. Standard
- B. Enterprise
- C. Business Critical
- D. Virtual Private Snowflake

Answer: B

NEW QUESTION 515

- (Exam Topic 3)

When should a multi-cluster warehouse be used in auto-scaling mode?

- A. When it is unknown how much compute power is needed
- B. If the select statement contains a large number of temporary tables or Common Table Expressions (CTEs)
- C. If the runtime of the executed query is very slow
- D. When a large number of concurrent queries are run on the same warehouse

Answer: D

NEW QUESTION 519

- (Exam Topic 3)

What is the SNOWFLAKE.ACCOUNT_USAGE view that contains information about which objects were read by queries within the last 365 days (1 year)?

- A. VIEWS_HISTORY
- B. OBJECT_HISTORY
- C. ACCESS_HISTORY
- D. LOGIN_HISTORY

Answer: C

NEW QUESTION 522

- (Exam Topic 3)

Which Snowflake architectural layer is responsible for a query execution plan?

- A. Compute
- B. Data storage
- C. Cloud services
- D. Cloud provider

Answer: D

NEW QUESTION 527

- (Exam Topic 3)

Which Snowflake tool would be BEST to troubleshoot network connectivity?

- A. SnowCLI
- B. SnowUI
- C. SnowSQL
- D. SnowCD

Answer: D

Explanation:

[https://docs.snowflake.com/en/user-guide/snowcd.html#:~:text=SnowCD%20\(i.e.%20Snowflake%20Connectivi](https://docs.snowflake.com/en/user-guide/snowcd.html#:~:text=SnowCD%20(i.e.%20Snowflake%20Connectivi)

NEW QUESTION 529

- (Exam Topic 3)

When cloning a database containing stored procedures and regular views, that have fully qualified table references, which of the following will occur?

- A. The cloned views and the stored procedures will reference the cloned tables in the cloned database.
- B. An error will occur, as views with qualified references cannot be cloned.
- C. An error will occur, as stored objects cannot be cloned.
- D. The stored procedures and views will refer to tables in the source database.

Answer: D

NEW QUESTION 530

- (Exam Topic 3)

What file formats does Snowflake support for loading semi-structured data? (Choose three.)

- A. TSV
- B. JSON
- C. PDF
- D. Avro
- E. Parquet
- F. JPEG

Answer: BDE

NEW QUESTION 532

- (Exam Topic 3)

Which statements are correct concerning the leveraging of third-party data from the Snowflake Data Marketplace? (Choose two.)

- A. Data is live, ready-to-query, and can be personalized.
- B. Data needs to be loaded into a cloud provider as a consumer account.
- C. Data is not available for copying or moving to an individual Snowflake account.
- D. Data is available without copying or moving.
- E. Data transformations are required when combining Data Marketplace datasets with existing data in Snowflake.

Answer: AD

NEW QUESTION 537

- (Exam Topic 3)

What types of data listings are available in the Snowflake Data Marketplace? (Choose two.)

- A. Reader
- B. Consumer
- C. Vendor
- D. Standard
- E. Personalized

Answer: DE

NEW QUESTION 540

- (Exam Topic 3)

Which of the following statements describes a schema in Snowflake?

- A. A logical grouping of objects that belongs to a single database
- B. A logical grouping of objects that belongs to multiple databases
- C. A named Snowflake object that includes all the information required to share a database
- D. A uniquely identified Snowflake account within a business entity

Answer: A

NEW QUESTION 545

- (Exam Topic 3)

What features that are part of the Continuous Data Protection (CDP) feature set in Snowflake do not require additional configuration? (Choose two.)

- A. Row level access policies
- B. Data masking policies
- C. Data encryption
- D. Time Travel
- E. External tokenization

Answer: CD

NEW QUESTION 547

- (Exam Topic 3)

Which of the following describes the Snowflake Cloud Services layer?

- A. Coordinates activities in the Snowflake account
- B. Executes queries submitted by the Snowflake account users
- C. Manages quotas on the Snowflake account storage
- D. Manages the virtual warehouse cache to speed up queries

Answer: A

NEW QUESTION 549

- (Exam Topic 3)

For non-materialized views, what column in Information Schema and Account Usage identifies whether a view is secure or not?

- A. CHECK_OPTION
- B. IS_SECURE
- C. IS_UPDATEABLE
- D. TABLE_NAME

Answer: B

NEW QUESTION 552

- (Exam Topic 3)

Data storage for individual tables can be monitored using which commands and/or objects? (Choose two.)

- A. SHOW STORAGE BY TABLE;
- B. SHOW TABLES;
- C. Information Schema -> TABLE_HISTORY
- D. Information Schema -> TABLE_FUNCTION
- E. Information Schema -> TABLE_STORAGE_METRICS

Answer: AE

NEW QUESTION 556

- (Exam Topic 3)

Using variables in Snowflake is denoted by using which SQL character?

- A. @
- B. &
- C. \$
- D. #

Answer: C

NEW QUESTION 557

- (Exam Topic 3)

Which of the following describes a Snowflake stored procedure?

- A. They can be created as secure and hide the underlying metadata from the user.
- B. They can only access tables from a single database.
- C. They can contain only a single SQL statement.
- D. They can be created to run with a caller's rights or an owner's rights.

Answer: A

Explanation:

Reference: <https://docs.snowflake.com/en/sql-reference/stored-procedures-overview.html>

NEW QUESTION 560

.....

THANKS FOR TRYING THE DEMO OF OUR PRODUCT

Visit Our Site to Purchase the Full Set of Actual SnowPro-Core Exam Questions With Answers.

We Also Provide Practice Exam Software That Simulates Real Exam Environment And Has Many Self-Assessment Features. Order the SnowPro-Core Product From:

<https://www.2passeasy.com/dumps/SnowPro-Core/>

Money Back Guarantee

SnowPro-Core Practice Exam Features:

- * SnowPro-Core Questions and Answers Updated Frequently
- * SnowPro-Core Practice Questions Verified by Expert Senior Certified Staff
- * SnowPro-Core Most Realistic Questions that Guarantee you a Pass on Your FirstTry
- * SnowPro-Core Practice Test Questions in Multiple Choice Formats and Updatesfor 1 Year