

Cisco

Exam Questions 400-007

Cisco Certified Design Expert (CCDE v3.0) Written Exam



NEW QUESTION 1

Which solution component helps to achieve comprehensive threat protection and compliance for migration to multicloud SDX architectures?

- A. system-oriented architecture
- B. OSASE architecture
- C. platform-oriented architecture
- D. SASE architecture

Answer: D

NEW QUESTION 2

Drag and drop the QoS technologies from the left onto the correct capabilities on the right

low latency queuing	allows you to buffer traffic so that it adheres to the bandwidth provided by the service provider
CB-WFQ	used for scavenger traffic when it exceeds a specified limit
policing	allows you to prioritize traffic
traffic shaping	allows you to reserve bandwidth

- A. Mastered
- B. Not Mastered

Answer: A

Explanation:

low latency queuing	traffic shaping
CB-WFQ	policing
policing	low latency queuing
traffic shaping	CB-WFQ

NEW QUESTION 3

Which management category is not part of FCAPS framework?

- A. Configuration
- B. Security
- C. Performance
- D. Authentication
- E. Fault-management

Answer: D

NEW QUESTION 4

A legacy enterprise is using a Service Provider MPLS network to connect its head office and branches. Recently, they added a new branch to their network. Due to physical security concerns, they want to extend their existing IP CCTV network of the head office to the new branch, without any routing changes in the network. They are also under some time constraints. What is the best approach to extend the existing IP CCTV network to the new branch, without incurring any IP address changes?

- A. GRE
- B. L2TPv3
- C. VXLAN
- D. EoMPLS

Answer: B

NEW QUESTION 5

You have been tasked with designing a data center interconnect to provide business continuity. You want to encrypt the traffic over the DCI using IEEE 802.1AE MACsec to prevent the deployment of any firewall or IPS. Which two interconnect technologies support MACsec? (Choose two.)

- A. EoMPLS
- B. MPLS Layer 3 VPN
- C. DMVPN
- D. GET VPN
- E. KVPLS

Answer: AE

NEW QUESTION 6

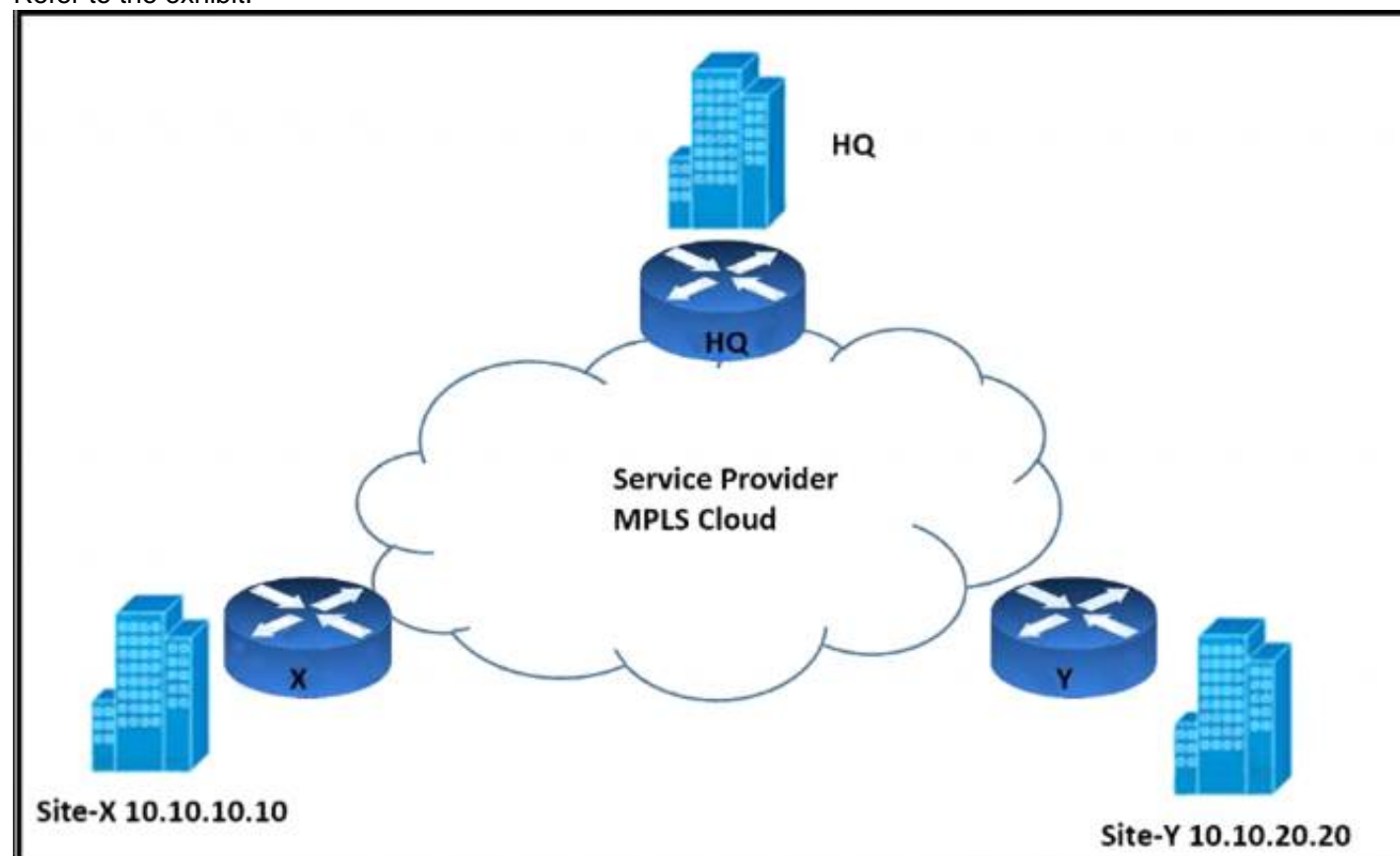
According to the CIA triad principles for network security design, which principle should be priority for a Zero Trust network?

- A. requirement for data-in-motion encryption and 2FA authentication
- B. requirement for data-at-rest encryption for user identification within the VPN termination hardware
- C. categorization of systems, data, and enterprise BYOD assets that are connected to network zones based on individual privacy needs
- D. ensuring that authorized users have high-availability system access from defined zones to defined systems or zones

Answer: A

NEW QUESTION 7

Refer to the exhibit.



An architect must design an enterprise WAN that connects the headquarters with 22 branch offices. The number of remote sites is expected to triple in the next three years. The final solution must comply with these requirements:

- Only the loopback address of each of the enterprise CE X and Y routers must be advertised to the interconnecting service provider cloud network.
- The transport layer must carry the VPNv4 label and VPN payload over the MP-BGP control plane.
- The transport layer must not be under service provider control.

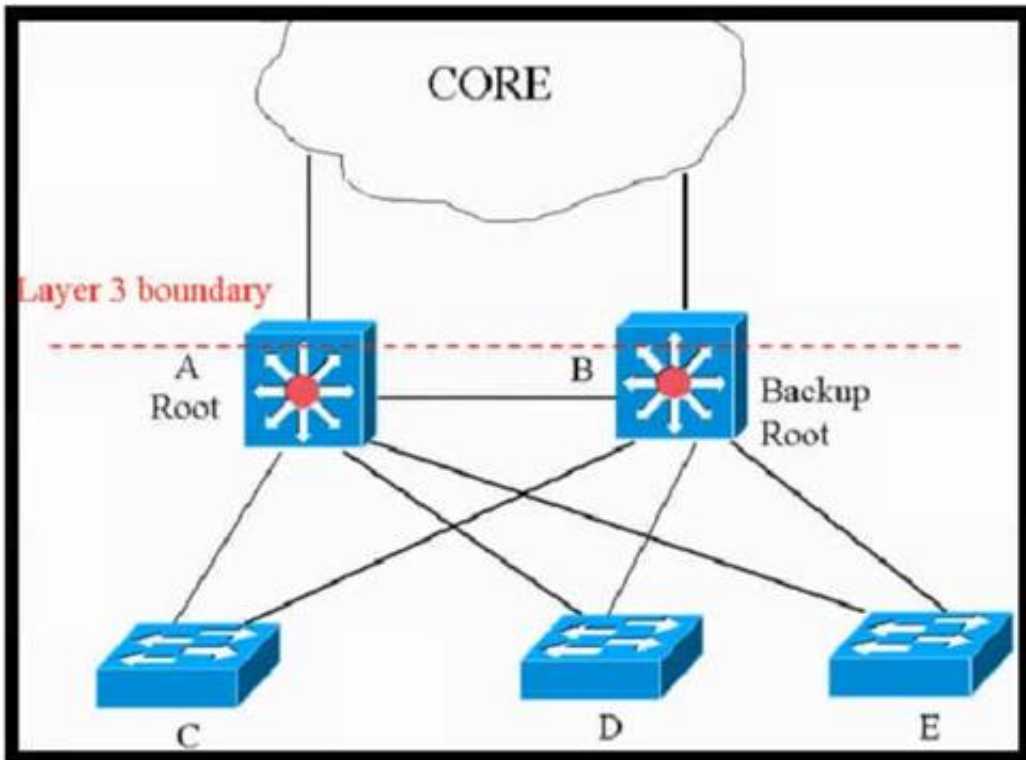
Which enterprise WAN transport virtualization technique meets the requirements?

- A. EIGRP Over the Top
- B. MPLS over BGP over multipoint GRE
- C. DMVPN per VRF
- D. point-to-point GRE per VRF

Answer: B

NEW QUESTION 8

Refer to the exhibit.



This network is running legacy STP 802.1 d. Assuming "hello_timer" is fixed to 2 seconds, which parameters can be modified to speed up convergence times after single link/node failure?

- A. The transit_delay=5 and dpdu_delay=20 are recommended values, considering helto_timer=2 and specified
- B. Only the maximum_transmission_halt_delay and diameter parameters are configurable parameters in 802. to speed up STP convergence process
- C. The max_age and forward delay parameters can be adjusted to speed up STP convergence process.
- D. Only the transit_delay and bpdu_delay timers are configurable parameters in 802.1d to speed up STP convergence process.

Answer: C

NEW QUESTION 9

Enterprise XYZ wants to implement fast convergence on their network and optimize timers for OSPF However they also want to prevent excess flooding of LSAs if there is a constantly flapping link on the network Which timers can help prevent excess flooding of LSAs for OSPF?

- A. OSPF propagation timers
- B. OSPF throttling timers
- C. OSPF delay timers
- D. OSPF flooding timers

Answer: B

NEW QUESTION 10

A healthcare customer requested that SNMP traps must be sent over the MPLS Layer 3 VPN service. Which protocol must be enabled?

- A. SNMPv3
- B. Syslog
- C. Syslog TLS
- D. SNMPv2
- E. SSH

Answer: A

NEW QUESTION 10

Refer to the exhibit.



Company XYZ BGP topology is as shown in the diagram. The interface on the LA router connected toward the 10.1.5.0/24 network is faulty and is going up and down, which affects the entire routing domain. Which routing technique can be used in the routing policy design so that the rest of the network is not affected by the flapping issue?

- A. Use route dampening on LA router for the 10 1 5 0/24 network so that it does not get propagated when it flaps up and down
- B. Use route filtering on Chicago router to block the 10.1.5.0/24 network from coming in from the LA router
- C. Use route filtering on LA router to block the 10.15.0/24 network from getting propagated toward Chicago and New York
- D. Use route aggregation on LA router to summarize the 10.1.4.0V24, 10.1.5.0/24, 10.1.6.0/24. and 10.1.7.0/24 networks toward Chicago

Answer: D

NEW QUESTION 15

Which architecture does not require an explicit multicast signaling protocol, such as PIM or P2MP, to signal the multicast state hop-by-hop, but instead uses a link state protocol to advertise the multicast forwarding state?

- A. Binary indexed explicit routing
- B. Binary intermediate enhanced routing
- C. Bit indexed explicit replication
- D. Bi-directional implicit replication

Answer: C

NEW QUESTION 19

Company XYZ network runs IPv4 and IPv6 and they want to introduce a multidomain, multicast-based network. The new design should use a flavor of PIM that forwards traffic using SPT. Which technology meets this requirement?

- A. PIM-DM
- B. PIM-SM
- C. PIM-SSM
- D. BIDIR-PIM

Answer: C

NEW QUESTION 21

Which technology supports antispoofing and does not have any impact on encryption performance regardless of packet size?

- A. MACsec
- B. IP source guard
- C. DHCP snooping with DAI
- D. IPsec

Answer: A

NEW QUESTION 24

Company XYZ uses an office model where the employees can use any open desk and plug their laptops in. They want to authenticate the end users using their domain username and password before allowing them access to the network. The design must also accommodate the ability of controlling traffic within the same group or subnet if a macro (or micro) segmentation-based model is adopted in the future. Which protocol can be recommended for this design to authenticate end users?

- A. LDAP
- B. EAP
- C. TACACS+
- D. RADIUS

Answer: D

Explanation:

<https://www.networkstraining.com/what-is-cisco-ise/>

NEW QUESTION 28

What is a web-based model in which a third-party provider hosts applications that are available to customers over the Internet?

- A. PaaS
- B. SaaS
- C. IaaS
- D. WaaS

Answer: B

NEW QUESTION 29

Company ABC wants to minimize the risk of users plugging unauthorized switches and hubs into the network. Which two features can be used on the LAN access ports to support this design requirement? (Choose two.)

- A. Loop Guard
- B. PortFast
- C. DTF
- D. Root Guard
- E. BPDU Guard

Answer: BE

NEW QUESTION 31

Which two features control multicast traffic in a VLAN environment? (Choose two)

- A. IGMP snooping
- B. MLD snooping
- C. RGMP

- D. PIM snooping
- E. pruning

Answer: AB

NEW QUESTION 33

You are designing the routing design for two merging companies that have overlapping IP address space. Which of these must you consider when developing the routing and NAT design?

- A. Local to global NAT translation is done after routing
- B. Global to local NAT translation is done before routing.
- C. Local to global NAT translation is done before policy-based routing
- D. Global to local NAT translation is done after policy-based routing.

Answer: B

NEW QUESTION 38

Company XYZ needs advice in redesigning their legacy Layer 2 infrastructure. Which technology should be included in the design to minimize or avoid convergence delays due to STP or FHRP and provide a loop-free topology?

- A. Use switch clustering in the access layer.
- B. Use switch clustering in the core/distribution layer.
- C. Use spanning-tree PortFast.
- D. Use BFD.

Answer: B

NEW QUESTION 42

Which two statements describe the hierarchical LAN design model? (Choose two)

- A. It is a well-understood architecture that provides scalability
- B. It is the best design for modern data centers
- C. It is the most optimal design but is highly complex
- D. It provides a simplified design
- E. Changes, upgrades, and new services can be introduced in a controlled and staged manner

Answer: AE

NEW QUESTION 43

A customer asks you to perform a high level review of their upcoming WAN refresh for remote sites The review is specially focused on their retail store operations consisting of 500+ locations connected via mutlipoint IPsec VPN solution. Which routing protocol would be valid but would also be the most restrictive for the expansion of this deployment model?

- A. EIGRP
- B. IS-IS
- C. OSPF
- D. BGP

Answer: B

NEW QUESTION 48

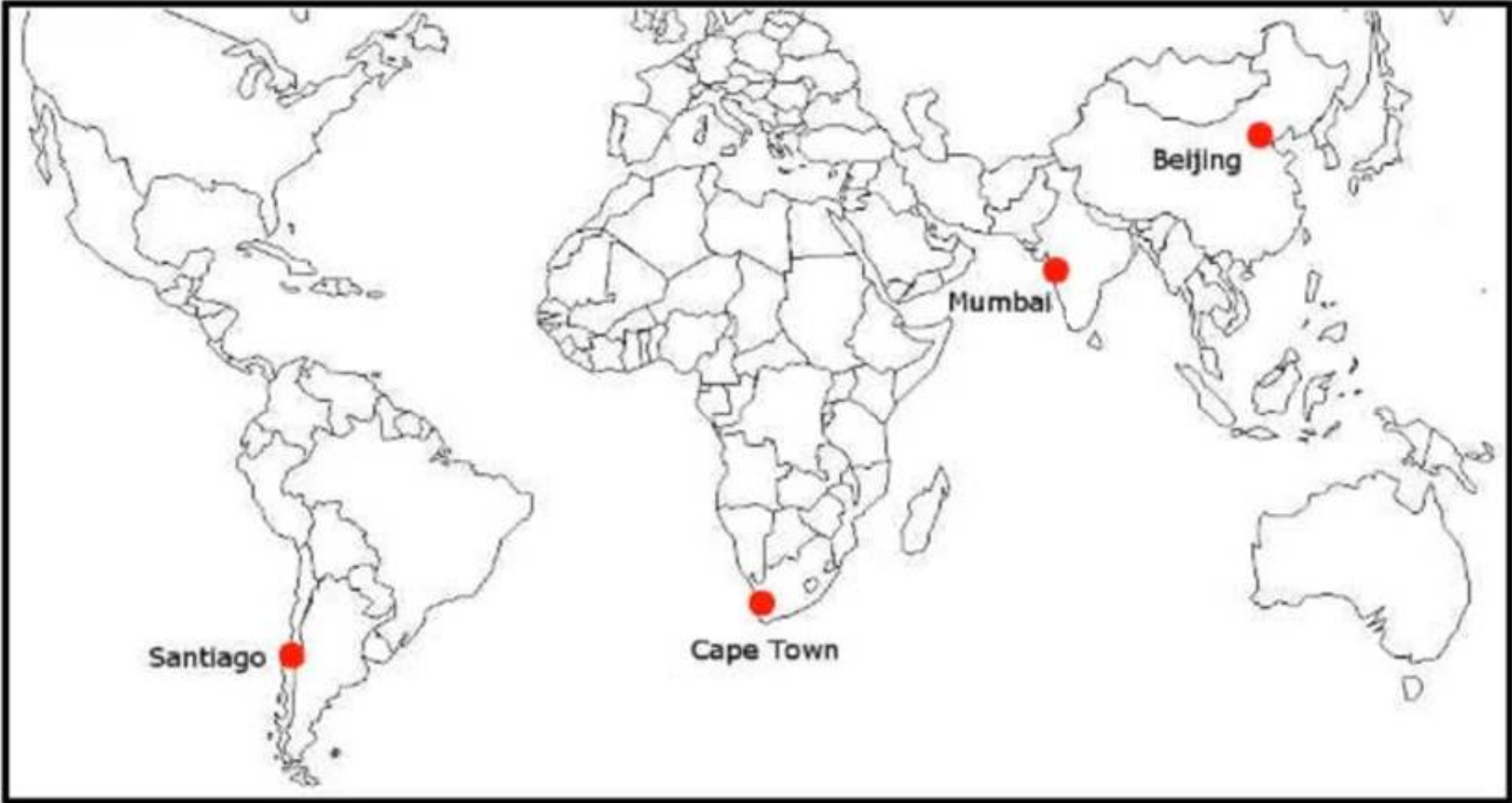
The network designer needs to use GLOP IP addresses in order to make them unique within their ASN Which multicast address range should be used?

- A. 232.0.0.0 to 232 255.255.255
- B. H233.0.0 0 to 233.255.255 255
- C. 239000 to 239255255.255
- D. 224000 to 2240.0 255

Answer: B

NEW QUESTION 49

Refer to the exhibit.



ACME Mining has four data centers in Santiago. Cape Town. Mumbai, and Beijing, full-mesh connected via a 400 Mb/s EVP-LAN They want to deploy a new mission-critical application with these requirements:

- > cluster heartbeat 2 Mb/s continuous (250 KB/s)
- > cluster heartbeat one-way maximum latency 100 ms

These are the current ping tests results between the four data centers:

	Santiago	Cape Town	Mumbai	Beijing
Santiago	-	280 ms	378 ms	409 ms
Cape Town	280 ms	-	185 ms	445 ms
Mumbai	383 ms	176 ms	-	443 ms
Beijing	430 ms	448 ms	442 ms	-

Which hosting data center pair can host the new application?

- A. Mumbai and Beijing
- B. Santiago and Cape Town
- C. Santiago and Mumbai
- D. Cape Town and Mumbai
- E. Cape Town and Beijing
- F. Santiago and Beijing

Answer: D

NEW QUESTION 52

Which two protocols are used by SDN controllers to communicate with switches and routers? (Choose two)

- A. OpenFlash
- B. OpenFlow
- C. NetFlash
- D. Open vSwitch Database
- E. NetFlow

Answer: BD

NEW QUESTION 54

Drag and drop the FCAPS network management reference models from the left onto the correct definitions on the right.

Fault Management	ensures that network transit quality remains at acceptable levels
Configuration Management	gathers usage statistics for users and business units
Accounting Management	gathers and stores configuration code from network devices
Performance Management	recognizes, isolates, corrects, and logs events that occur in the network
Security Management	controls access to assets in the network

- A. Mastered
 B. Not Mastered

Answer: A

Explanation:

Fault Management	= Recognize, isolates, corrects, and logs events that occur in the network
Configuration Management	= Gathers and stores configuration code from network devices
Performance Management	= ensures that network transit quality remains at acceptable levels
Security Management	= Controls access to assets in the network
Accounting Management	= gathers usage statistics for users and business units

NEW QUESTION 56

Company XYZ is designing the IS-IS deployment strategy for their multiarea IS-IS domain. They want IS-IS neighbour relationships to be minimized on each network segment and want to optimize the size of the IS-IS LSDB on each router. Which can design can be used to meet these requirements?

- A. Design all routers as Level 2 router
 B. Set the links between the routers as Level 1 with the area
 C. Design the network so that the routers connecting to other areas are Level 2 routers and internal routers are Level 1
 D. Design the network so that all routers are Level 1 routers
 E. Design the network so that the routers connecting to other areas are Level 1/Level 2 routers and internal routers are Level 1

Answer: D

NEW QUESTION 57

A network attacker exploits application flaws to compromise critical systems in the organization with these objectives:

- Obtain sensitive data and export the data out of the network.
- Compromise developer and administrator credentials to potentially

What is the next step after application discovery is completed in Zero Trust networkings

- A. Establish visibility and behavior modeling
 B. Enforce policies and microsegmentation.
 C. Assess real-time security health.
 D. Ensure trustworthiness of systems.

Answer: A

Explanation:

<https://www.cisco.com/c/en/us/solutions/collateral/enterprise/design-zone-security/zt-arch-guide.html>

NEW QUESTION 61

Company XYZ wants to deploy OSPF. The design plan requires that two OSPF networks be mutually redistributed at multiple locations and ensure end-to-end connectivity to all of the company's networks Which technology can be used to fulfill the requirements while avoiding the creation of routing loops?

- A. Create a virtual link between ASBRs.
 B. Change the router ID for both ASBRs.
 C. Redistribute routes as external type 2 routes.
 D. Use route maps on ASBRs to filter routes with tags so they are not redistributed.

Answer: D

Explanation:

<https://www.cisco.com/c/en/us/support/docs/ip/open-shortest-path-first-ospf/4170-ospfprocesses.html>

NEW QUESTION 64

A European government passport agency considers upgrading its IT systems to increase performance and workload flexibility in response to constantly changing requirements. The budget manager wants to reduce capital expenses and IT staff and must adopt the lowest-cost technology. Which technology choice is suitable?

- A. on premises
- B. private cloud
- C. public cloud
- D. hybrid cloud

Answer: C

NEW QUESTION 67

Company XYZ is revisiting the security design for their data center because they now have a requirement to control traffic within a subnet and implement deep packet inspection. Which technology meets the updated requirements and can be incorporated into the design?

- A. routed firewall
- B. VLAN ACLs on the switch
- C. transparent firewall
- D. zone-based firewall on the Layer 3 device

Answer: C

NEW QUESTION 68

What is the most important operational driver in building a resilient and secure modular network design?

- A. Dependencies on hardware or software that is difficult to scale
- B. Minimize app downtime
- C. Reduce the frequency of failures requiring human intervention
- D. Increase time spent on developing new features

Answer: B

NEW QUESTION 71

A healthcare provider discovers that protected health information of patients was altered without patient consent. The healthcare provider is subject to HIPAA compliance and is required to protect PHI data. Which type of security safeguard should be implemented to resolve this issue?

- A. technical and physical access control
- B. administrative security management processes
- C. physical device and media control
- D. technical integrity and transmission security

Answer: D

Explanation:

https://www.cisco.com/en/US/docs/solutions/Enterprise/Compliance/HIPAA/HIP_AppC.html#wp1085353

NEW QUESTION 72

Which parameter is the most important factor to consider when deciding service placement in a cloud solution?

- A. data replication cost
- B. application structure
- C. security framework Implementation time
- D. data confidentiality rules

Answer: D

NEW QUESTION 74

Which two technologies enable multilayer segmentation? (Choose two.)

- A. policy-based routing
- B. segment routing
- C. data plane markings
- D. firewalls
- E. filter lists

Answer: AD

NEW QUESTION 79

In an OSPF network with routers connected together with Ethernet cabling, which topology typically takes the longest to converge?

- A. partial mesh
- B. full mesh

- C. ring
- D. squared
- E. triangulated

Answer: B

NEW QUESTION 80

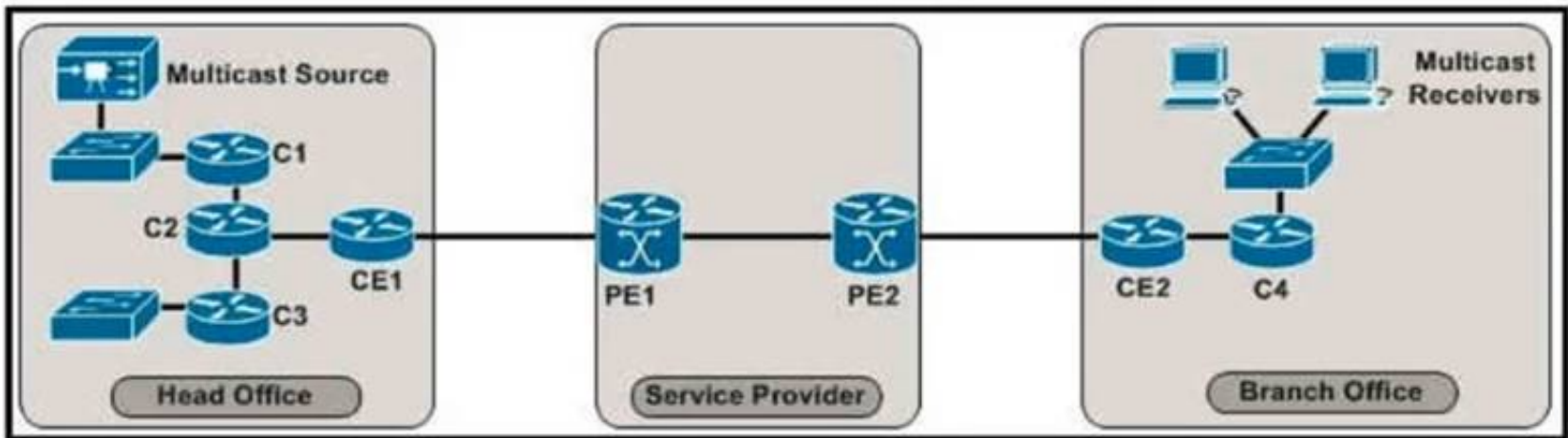
A network design includes a long signaling delay in notifying the Layer 3 control plane that an interface has failed Which two of these actions would reduce that delay? (Choose two.)

- A. Increase network stability.
- B. Reduce the time for the network to reconverge.
- C. Increase the notification of interface flaps.
- D. Enable lower data link layer recovery systems to have an opportunity to restore the interface

Answer: BD

NEW QUESTION 85

Refer to the exhibit.



The enterprise customer wants to stream one-way video from their head office to eight branch offices using multicast. Their current service provider provides a Layer3 VPN solution and manages the CE routers, but they do not currently support multicast. Which solution quickly allows this multicast traffic to go through while allowing for future scalability?

- A. Enable a GRE tunnel between nodes CE1 and CE2
- B. Enable a GRE tunnel between nodes C2 and C4
- C. Enable a GRE tunnel between nodes C1 and C4
- D. Implement hub and spoke MPLS VPN over DMVPN (also known as 2547o DMVPN) between CE1 and CE2
- E. The service provider must provide a Draft Rosen solution to enable a GRE tunnel between nodes PE1 and PE2

Answer: B

NEW QUESTION 87

Refer to the exhibit.

	Equipment Cost	ISP Cost	Licenses Cost
SD-WAN over L3VPN	\$\$	\$\$	\$\$\$
SD-WAN over L2VPN	\$\$	\$	\$\$\$
Managed SD-WAN	\$	\$\$\$	-
DMVPN over L3VPN	\$\$	\$\$	\$

The WAN network of the General Bank of Greece has experienced several outages It takes too long to activate a new branch site The networking department of the bank plans to upgrade the legacy end-of-life WAN network with a new flexible manageable, and scalable in-house solution The number of branches will increase exponentially in the next fiscal year The CTO states that the bank’s mam goal is OPEX reduction The network engineering team prepares a table to evaluate the available options Which WAN technology can be used for the solution?

- A. DMVPN over L3VPN
- B. Managed SD-WAN
- C. SD-WAN over L3VPN
- D. SD-WAN over L2VPN

Answer: B

NEW QUESTION 92

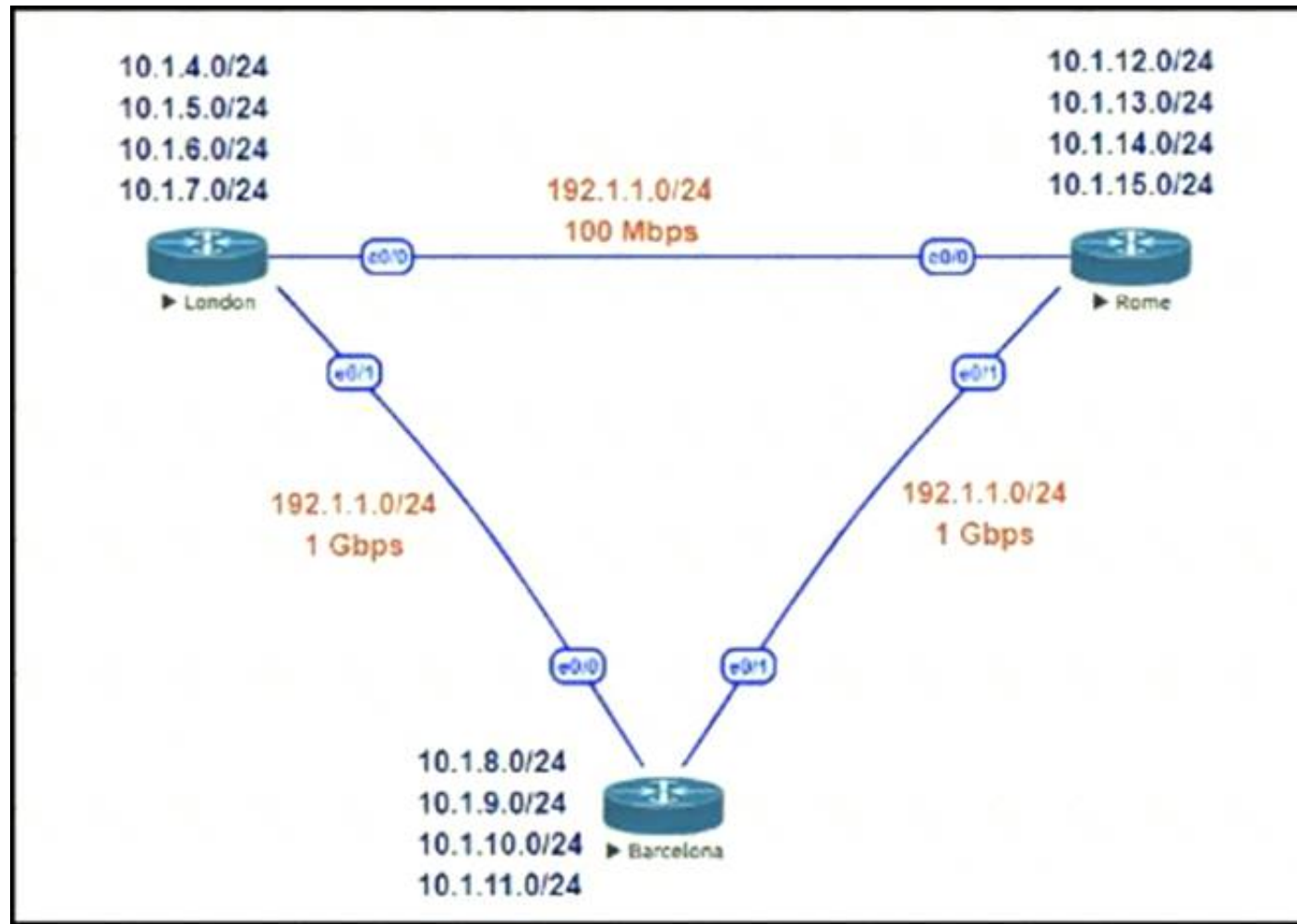
Which two data plane hardening techniques are true? (Choose two)

- A. warning banners
- B. redundant AAA servers
- C. Control Plane Policing
- D. SNMPv3
- E. infrastructure ACLs
- F. disable unused services
- G. routing protocol authentication

Answer: EF

NEW QUESTION 93

Refer to the exhibit.



This network is running EIGRP as the routing protocol and the internal networks are being advertised in EIGRP. Based on the link speeds, all traffic between London and Rome is getting propagated via Barcelona and the direct link between London and Rome is not being utilized under normal working circumstances. The EIGRP design should allow for efficiency in the routing table by minimizing the routes being exchanged. The link between London and Rome should be utilized for specific routes. Which two steps accomplish this task? (Choose two.)

- A. Configure EIGRP route summarization on all the interfaces to summarize the internal LAN routes
- B. Filter the routes on the link between London and Barcelona
- C. Filter the routes on the link between London and Rome
- D. Configure route leaking of summary routes on the link between London and Rome

Answer: AD

NEW QUESTION 94

An IT service provider is upgrading network infrastructure to comply with PCI security standards. The network team finds that 802.1X and VPN authentication based on locally-significant certificates are not available on some legacy phones. Which workaround solution meets the requirement?

- A. Replace legacy phones with new phones because the legacy phones will lose trust if the certificate is renewed.
- B. Enable phone VPN authentication based on end-user username and password.
- C. Temporarily allow fallback to TLS 1.0 when using certificates and then upgrade the software on legacy phones.
- D. Use authentication-based clear text password with no EAP-MD5 on the legacy phones.

Answer: B

NEW QUESTION 97

A multinational enterprise integrates a cloud solution with these objectives

- Achieve seamless connectivity across different countries and regions
- Extend data center and private clouds into public clouds and provider-hosted clouds

What are two outcomes of deploying data centers and fabrics that interconnect different cloud networks? (Choose two.)

- A. enhanced security
- B. data and network ownership
- C. ability to place workloads across clouds
- D. centralized visibility
- E. unidirectional workload mobility across the cloud

Answer: AC

NEW QUESTION 102

Which design benefit of bridge assurance is true?

- A. It supposes a spanning-tree topology change upon connecting and disconnecting a station on a port
- B. It prevents switched traffic from traversing suboptimal paths on the network.
- C. It allows small, unmanaged switches to be plugged into ports of access switches without the risk of switch loops.
- D. It prevents switch loops caused by unidirectional point-to-point link condition on Rapid PVST + and MST

Answer: D

NEW QUESTION 105

Which two pain points are the most common for container technology adoption? (Choose two)

- A. Performance
- B. Security
- C. Cost
- D. Container deployment
- E. Skilled staff
- F. Compliance

Answer: DE

NEW QUESTION 109

A business invests in SDN and develops its own SDN controller that, due to budget constraints, runs on a single controller. The controller actively places an exclusive lock on the configuration of the devices to ensure it is the only source of changes to the environment. What is the result if the controller fails?

- A. All device configurations are in read-only mode until the controller is restored.
- B. The control plane is unavailable until the controller is restored.
- C. If a device fails, the configuration backup is unavailable
- D. Manual changes are only possible until the controller is restored

Answer: B

NEW QUESTION 111

Drag and drop the characteristics from the left onto the corresponding network management options on the right.

protocol based on HTTP for configuring data defined in YANG and supports operations such as GET, PUT, POST, PATCH, and DELETE	NETCONF
provides mechanisms to install, manipulate, and delete the configuration of network devices; uses XML for data encoding and the operation is realized as RPC	RESTCONF
application program interface that uses HTTP requests to GET, PUT, POST, and DELETE data	ANSIBLE
open-source software provisioning, configuration management, and application-deployment tool	YANG
data modeling language used to model configuration data, state data, remote procedure calls, and notifications for network management protocols	REST API

- A. Mastered
- B. Not Mastered

Answer: A

Explanation:

Text Description automatically generated

NEW QUESTION 116

You are designing a network for a branch office. In order to improve convergence time, you are required to use the BFD feature Which four routing protocols can you use to facilitate this? (Choose four.)

- A. IS-IS
- B. static
- C. RIP
- D. EIGRP
- E. BGP

Answer: ABDE

NEW QUESTION 119

Which design solution reduces the amount of IGMP state in the network?

- A. IGMP filtering
- B. IGMPv3 with PIM-SSM
- C. multiple multicast domains

D. one multicast group address thorough network regardless of IGMP version

Answer: A

NEW QUESTION 124

Which two factors provide multifactor authentication for secure access to applications and data, no matter where the users are or which devices they are on? (Choose two.)

- A. persona-based
- B. power-based
- C. push-based
- D. possession-based
- E. pull-based

Answer: CD

NEW QUESTION 129

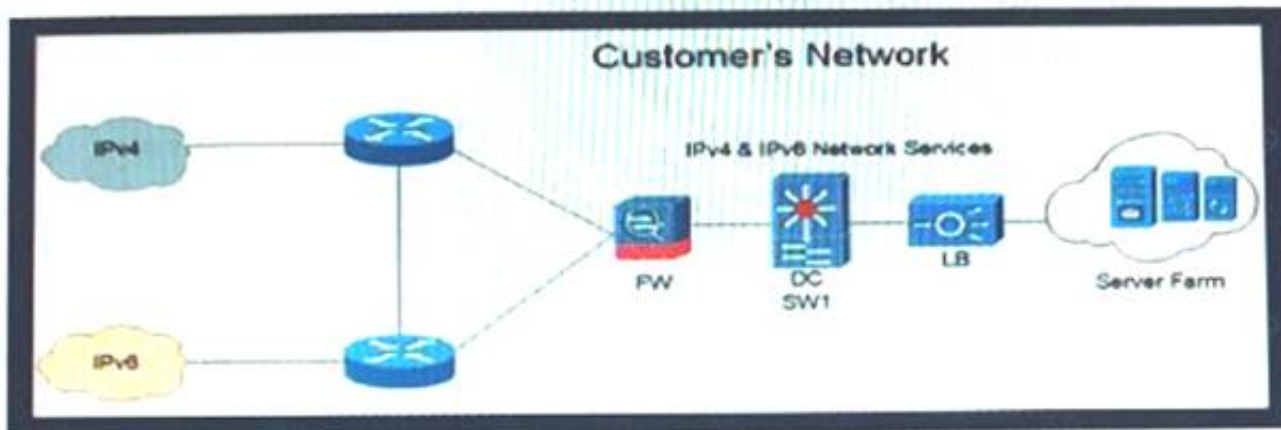
Which feature is supported by NETCONF but is not supported by SNMP?

- A. distinguishing between configuration data and operational data
- B. taking administrative actions
- C. collecting the status of specific fields
- D. changing the configuration of specific fields

Answer: A

NEW QUESTION 132

Refer to the exhibit.



Company XYZ is currently running IPv4 but has decided to start the transition into IPv6. The initial objective is to allow communication based on IPv6 wherever possible, and there should still be support in place for devices that only support IPv4. These devices must be able to communicate to IPv6 devices as well. Which solution must be part of the design?

- A. address family translation
- B. dual stack
- C. host-to-host tunneling
- D. 6rd tunneling

Answer: B

NEW QUESTION 135

A European national bank considers migrating its on-premises systems to a private cloud offering in a non-European location to significantly reduce IT costs. What is a primary factor prior to migration?

- A. data governance
- B. additional latency
- C. security
- D. cloud connectivity

Answer: C

NEW QUESTION 136

What are two top cloud-native security challenges faced by today's cloud-oriented organizations? (Choose two.)

- A. establishing user roles
- B. polymorphism
- C. lack of visibility and tracking
- D. increased attack surface
- E. user credential validation

Answer: CD

NEW QUESTION 140

A key to maintaining a highly available network is building in the appropriate redundancy to protect against failure. This redundancy is carefully balanced with the inherent complexity of redundant systems. Which design consideration is relevant for enterprise WAN use cases when it comes to resiliency?

- A. Design in a way that expects outages and attacks on the network and its protected resources
- B. The design approach should consider simple and centralized management aspect
- C. Design in a way that it simplifies and improves ease of deployment
- D. Design automation tools wherever it is appropriate for greater visibility

Answer: A

NEW QUESTION 143

Company XYZ branch offices connect to the headquarter sites using two links, MPLS and Internet. The company wants to design the traffic flow so that voice traffic goes through the MPLS link and all other traffic uses either the MPLS link or the Internet link. Which technique can the company use in their design to ensure that the traffic is not process switched?

- A. policy-based routing
- B. virtual links
- C. visualization
- D. floating static route

Answer: A

NEW QUESTION 147

Your network operations team is deploying Access Control Lists (ACLs) across your Internet gateways. They wish to place an ACL inbound on the Internet gateway interface facing the core network (the "trusted" interface). Which IP address would the ACL need for traffic sourced from the inside interface, to match the source address of the traffic?

- A. inside global
- B. outside global
- C. inside local
- D. outside local

Answer: C

NEW QUESTION 149

What are two design constraints in a standard spine and leaf architecture? (Choose two.)

- A. Spine switches can connect to each other.
- B. Each spine switch must connect to every leaf switch.
- C. Leaf switches must connect to each other.
- D. Endpoints connect only to the spine switches.
- E. Each leaf switch must connect to every spine switch.

Answer: BE

NEW QUESTION 150

While designing a switched topology, in which two options is UplinkFast recommended? (Choose two.)

- A. when switches of different spanning-tree types are connected (for example, 802.1d connecting to 802.1w)
- B. 802.1d connecting to 802.1w
- C. on distribution layer switches
- D. when hello timers are changed to more aggressive values
- E. on access layer switches
- F. on the core switches

Answer: AD

NEW QUESTION 152

Company XYZ wants to improve the security design of their network to include protection from reconnaissance and DoS attacks on their sub interfaces destined toward next hop routers. Which technology can be used to prevent these types of attacks?

- A. MPP
- B. CPPr
- C. CoPP
- D. DPP

Answer: B

Explanation:

<https://learningnetwork.cisco.com/s/question/0D53i00000KsuyvCAB/copp-vs-cppr>

NEW QUESTION 157

Which two possible drawbacks should you consider when introducing Network Functions Virtualization in a network design? (Choose two.)

- A. Bandwidth utilization increases
- B. Traffic flows are suboptimal
- C. High-end routers are required to support NFV
- D. OpenFlow must be supported in the network
- E. An SDN orchestration layer is required to support NFV

Answer: CE

NEW QUESTION 161

Company XYZ has designed their network to run GRE over IPsec on their Internet-based VPN to connect two sites. Which IPsec tunneling feature can they enable to optimize the data flow while ensuring that the headers contain no duplicate IP addresses?

- A. Transport Mode in IPsec Phase I
- B. Transport Mode in IPsec Phase II
- C. Tunnel Mode in IPsec Phase II
- D. Tunnel Mode in IPsec Phase I

Answer: B

NEW QUESTION 166

Which two benefits can software defined networks provide to businesses? (Choose two.)

- A. provides additional redundancy
- B. decentralized management
- C. reduced latency
- D. enables innovation
- E. reduction of OpEx/CapEx
- F. meets high traffic demands

Answer: DE

NEW QUESTION 169

As network designer, which option is your main concern with regards to virtualizing multiple network zones into a single hardware device?

- A. Fate sharing
- B. CPU resource allocation
- C. Congestion control
- D. Security
- E. Bandwidth allocation

Answer: A

NEW QUESTION 172

Which main IoT migration aspect should be reviewed for a manufacturing plant?

- A. Sensors
- B. Security
- C. Applications
- D. Wi-Fi Infrastructure
- E. Ethernet Switches

Answer: A

NEW QUESTION 176

Which two statements describe network automation and network orchestration? (Choose two.)

- A. Network automation does not provide governance or policy management.
- B. Network automation spans multiple network services, vendors, and environments.
- C. Network orchestration is done through programmatic REST APIs enabling automation across devices and management platforms.
- D. Provisioning network services is an example of network automation.
- E. Network orchestration is used to run single, low-level tasks without human intervention

Answer: AC

NEW QUESTION 177

Customer XYZ network consists of an MPLS core. IS-IS running as IGP a pair of BGP route reflectors for route propagation, and a few dozens of MPLS-TE tunnels for specific tactical traffic engineering requirements. The customer's engineering department has some questions about the use of the Overload Bit in the IS-IS networks and how it could be used to improve their current network design. Which two concepts about the Overload Bit are true? (Choose two.)

- A. It can be set on a router during the startup process for a fixed period of time
- B. Networks advertised within the LSPs of the respective node will become unreachable
- C. It forces the midpoint MPLS-TE node to reoptimize the primary tunnels going through the OL node.
- D. It can be set on a router until other interacting protocols have signaled convergence.
- E. It is not recommended on BGP Route Reflectors

Answer: AD

NEW QUESTION 179

Drag and drop the design use cases from the left onto the correct uRPF techniques used to prevent spoofing attacks Not all options are used.

to check whether a route to a given IP address exists without regard to its incoming interface	strict mode
to filter Bogon IP addresses	feasible mode
to ensure the incoming interface is the best reverse path to a given IP address	loose mode
when there are alternate routes to a given IP address	

- A. Mastered
B. Not Mastered

Answer: A

Explanation:

to check whether a route to a given IP address exists without regard to its incoming interface	to ensure the incoming interface is the best reverse path to a given IP address
to filter Bogon IP addresses	when there are alternate routes to a given IP address
to ensure the incoming interface is the best reverse path to a given IP address	to filter Bogon IP addresses
when there are alternate routes to a given IP address	

NEW QUESTION 183

What is a characteristic of a secure cloud architecture model?

- A. limited access to job function
B. dedicated and restricted workstations
C. multi-factor authentication
D. software-defined network segmentation

Answer: C

NEW QUESTION 184

The Layer 3 control plane is the intelligence over the network that steers traffic toward its intended destination. Which two techniques can be used in service provider-style networks to offer a more dynamic, flexible, controlled, and secure control plane design? (Choose two.)

- A. access control lists
B. firewalls
C. QoS policy propagation with BGP
D. remote black-holing trigger
E. prefix lists

Answer: DE

NEW QUESTION 186

An architect prepares a network design for a startup company. The design must be able to meet business requirements while the business grows and divests due to rapidly changing markets. What is the highest priority in this design?

- A. The network should be hierarchical
B. The network should be modular.
C. The network should be scalable.
D. The network should have a dedicated core.

Answer: A

NEW QUESTION 191

Which two actions must be taken when assessing an existing wireless network implementation for its readiness to support voice traffic? (Choose two.)

- A. Check for high roaming delay.
B. Check for uniform radio coverage across the floors.

- C. Check for high channel utilization.
- D. Check for latency over wireless.
- E. Identify frequent TX power changes.

Answer: AC

Explanation:

<https://community.cisco.com/t5/wireless/channel-utilization/td-p/2716667>

NEW QUESTION 192

Which two factors must be considered for high availability in campus LAN designs to mitigate concerns about unavailability of network resources? (Choose two.)

- A. device resiliency
- B. device type
- C. network type
- D. network resiliency
- E. network size

Answer: AD

NEW QUESTION 195

A business requirement stating that failure of WAN access for dual circuits into an MPLS provider for a Data Centre cannot happen due to related service credits that would need to be paid has led to diversely routed circuits to different points of presence on the providers network? What should a network designer also consider as part of the requirement?

- A. Provision of an additional MPLS provider
- B. Out of band access to the MPLS routers
- C. Ensuring all related remote branches are dual homed to the MPLS network
- D. Dual PSUs & Supervisors on each MPLS router

Answer: A

NEW QUESTION 199

Company XYZ has two routing domains in their network, EIGRP and OSPF. The company wants to provide full reachability between the two domains by implementing redistribution on a router running both protocols. They need to design the redistribution in a way that the OSPF routers will see link costs added to external routes. How must the redistribution strategy be designed for this network?

- A. Redistribute using metric type 2 into OSPF.
- B. Redistribute using metric type 1 into OSPF.
- C. Redistribute using metric type 1 into EIGRP.
- D. Redistribute using metric type 2 into EIGRP.

Answer: B

Explanation:

[https://www.ciscopress.com/articles/article.asp?p=27573&seqNum=4#:~:text=Routes%20are%20redistributed%](https://www.ciscopress.com/articles/article.asp?p=27573&seqNum=4#:~:text=Routes%20are%20redistributed%20)

NEW QUESTION 202

In the case of outsourced IT services, the RTO is defined within the SLA. Which two support terms are often included in the SLA by IT and other service providers? (Choose two.)

- A. network size and cost
- B. support availability
- C. network sustainability
- D. network reliability
- E. resolution time

Answer: BE

NEW QUESTION 205

Which mechanism provides Layer 2 fault isolation between data centers?

- A. fabric path
- B. OTL
- C. advanced VPLS
- D. LISP
- E. TRILL

Answer: D

NEW QUESTION 210

What are two primary design constraints when a robust infrastructure solution is created? (Choose two.)

- A. monitoring capabilities
- B. project time frame
- C. staff experience

- D. component availability
- E. total cost

Answer: BE

NEW QUESTION 213

When designing a WAN that will be carrying real-time traffic, what are two important reasons to consider serialization delay? (Choose two)

- A. Serialization delays are invariable because they depend only on the line rate of the interface
- B. Serialization delays are variable because they depend on the line rate of the interface and on the type of the packet being serialized.
- C. Serialization delay is the time required to transmit the packet on the physical media.
- D. Serialization delays are variable because they depend only on the size of the packet being serialized
- E. Serialization delay depends not only on the line rate of the interface but also on the size of the packet

Answer: BD

NEW QUESTION 214

What are two common approaches to analyzing and designing networks? (Choose two.)

- A. bottom-up approach
- B. high-low security approach
- C. top-down approach
- D. left-right approach
- E. three-tier approach

Answer: AC

NEW QUESTION 216

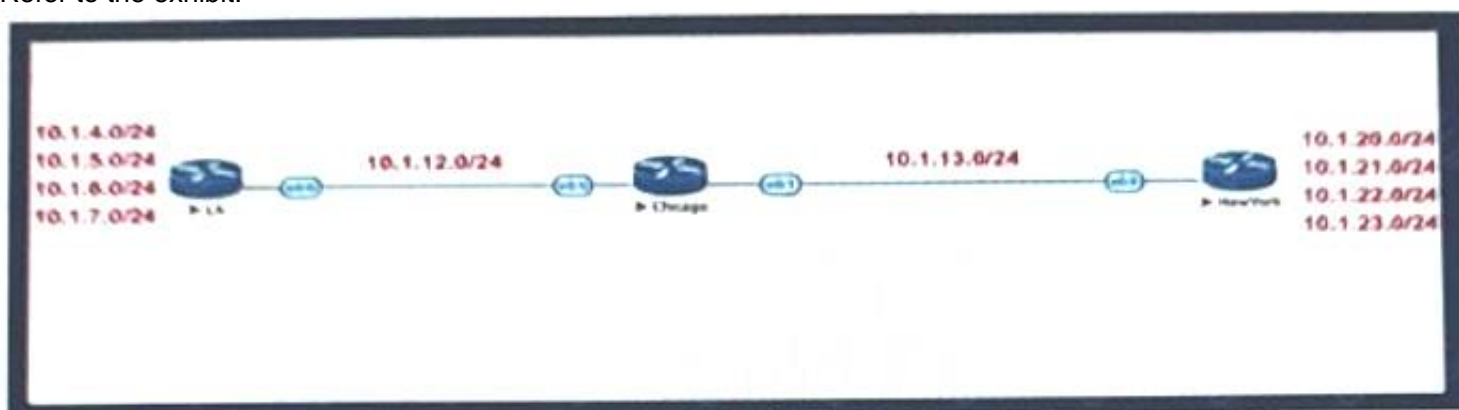
Which two advantages of using DWDM over traditional optical networks are true? (Choose two.)

- A. inherent topology flexibility and service protection provided without penalty through intelligent oversubscription of bandwidth reservation
- B. ability to expand bandwidth over existing optical Infrastructure
- C. inherent topology flexibility with built-in service protection
- D. inherent topology flexibility with intelligent chromatic dispersion
- E. inherent topology flexibility with a service protection provided through a direct integration with an upper layer protocol

Answer: BC

NEW QUESTION 218

Refer to the exhibit.



Company XYZ BGP topology is as shown in the diagram. The interface on the LA router connected toward the 10.1.5.0/24 network is faulty and is going up and down, which affects the entire routing domain. Which routing technique can the network administrator use so that the rest of the network is not affected by the flapping issue?

- A. The LA administrator should use route aggregation to summarize the 10.1.4.0/24, 10.1.5.0/24, 10.1.6.0/24, and 10.1.7.0/24 networks toward Chicago
- B. The LA administrator should use route dampening for the 10.1.5.0/24 network so that it does not get propagated when it flaps up and down.
- C. The LA administrator should use route filtering to block the 10.1.5.0/24 network from getting propagated toward Chicago and New York.
- D. The Chicago administrator should use route filtering to block the 10.1.5.0/24 network from coming in from the LA router.

Answer: B

NEW QUESTION 223

An architect designs a multi-controller network architecture with these requirements:

- Achieve fast failover to control traffic when controllers fail.
- Reduce connectivity loss and enable smart recovery to improve the SDN survivability.
- Improve connectivity by adding path diversity and capacity awareness for controllers.

Which control plane component of the multi-controller must be built to meet the requirements?

- A. control node reliability
- B. controller state consistency
- C. control path reliability
- D. controller clustering

Answer: B

NEW QUESTION 227

Which three tools are used for ongoing monitoring and maintenance of a voice and video environment? (Choose three.)

- A. flow-based analysis to measure bandwidth mix of applications and their flows
- B. call management analysis to identify network convergence-related failures
- C. call management analysis to identify CAC failures and call quality issues
- D. active monitoring via synthetic probes to measure loss, latency, and jitter
- E. passive monitoring via synthetic probes to measure loss, latency, and jitter
- F. flow-based analysis with PTP time-stamping to measure loss, latency, and jitter

Answer: ACD

NEW QUESTION 231

Company XYZ is designing their network using the three-layer hierarchical model. At which layer must the QoS design classify or mark the traffic?

- A. access
- B. core
- C. collapsed core
- D. distribution

Answer: A

NEW QUESTION 236

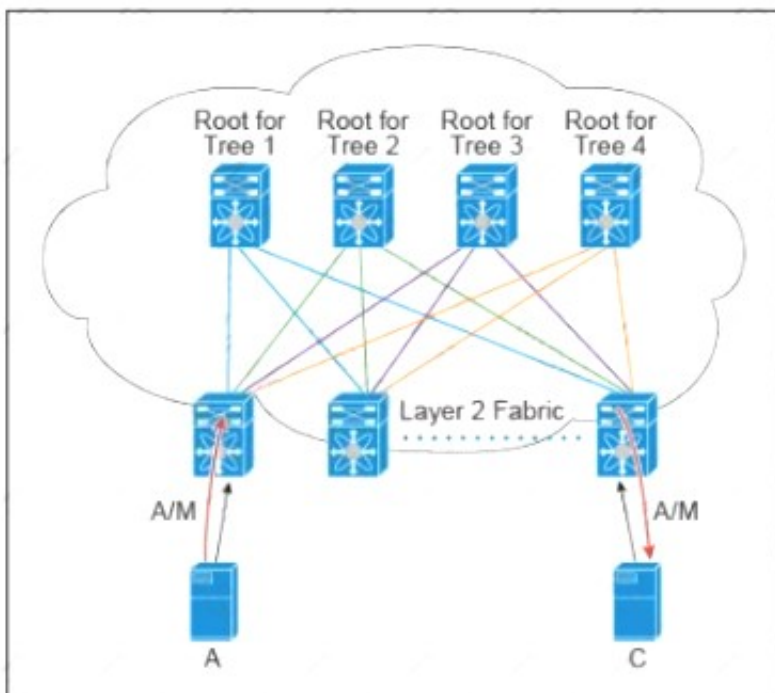
Which three components are part of the foundational information security principles of the CIA triad? (Choose three.)

- A. cryptography
- B. confidentiality
- C. authorization
- D. identification
- E. integrity
- F. availability

Answer: BEF

NEW QUESTION 237

Refer to the exhibit.



There are multiple trees in the Cisco FabricPath. All switches in the Layer 2 fabric share the same view of each tree. Which two concepts describe how the multicast traffic is load-balanced across this topology? (Choose two.)

- A. A specific (S,G) traffic is not load-balanced
- B. All trees are utilized at the same level of the traffic rate
- C. Every leaf node assigns the specific (S,G) to the same tree.
- D. A specific (S,G) multicast traffic is load-balanced across all trees due to better link utilization efficiency.
- E. The multicast traffic is generally load-balanced across all trees

Answer: BD

NEW QUESTION 241

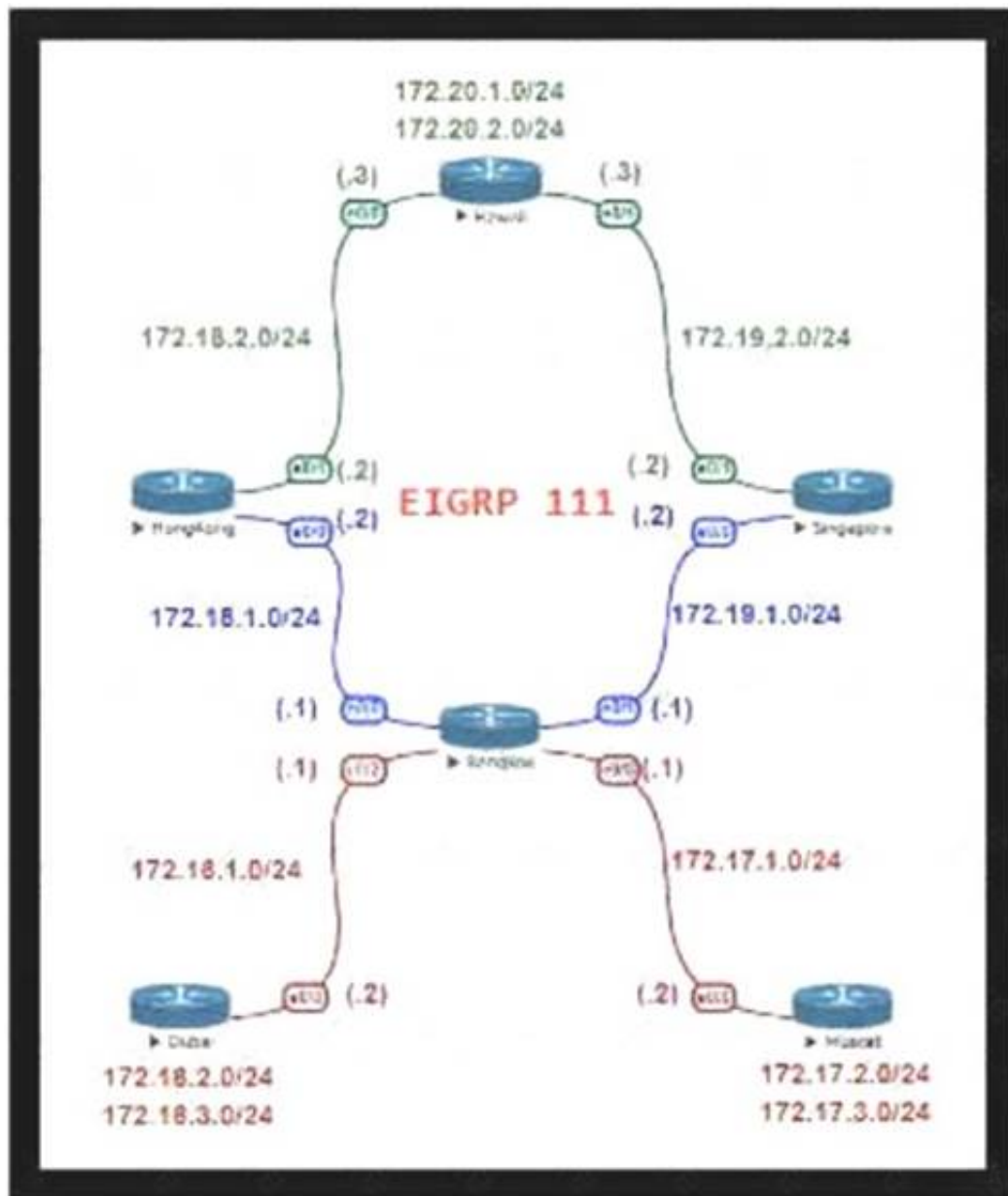
Which technology is an open-source infrastructure automation tool that automates repetitive tasks for users who work in networks such as cloud provisioning and intraservice orchestration?

- A. Ansible
- B. Contrail
- C. Java
- D. Jinja2

Answer: A

NEW QUESTION 242

Refer to the exhibit.



For Company XYZ Bangkok is using ECMP to reach the 172 20 2 0/24 network The company wants a design that would allow them to forward traffic from 172 16 2 0/24 toward 172 20 2 0/24 via the Singapore router as the preferred route The rest of the traffic should continue to use ECMP Which technology fulfills this design requirement?

- A. policy-based routing
- B. route summarization
- C. unequal-cost load balancing using variance
- D. LFA

Answer: A

NEW QUESTION 246

Two routers R1 and R2 are directly connected through an Ethernet link. Both routers are running OSPF over the Ethernet link and OSPF has been registered with BFD. R1 has been set up to transmit BFD at a 50 ms interval, but R2 can receive only at a 100 ms rate due to platform limitations. What does this mean?

- A. After the initial timer exchange
- B. R2 sets its transmission rate to the R1 Desired Min TX interval
- C. After the initial timer exchange
- D. R1 sets its transmission rate to the R2 Required Min RX interval
- E. Timers renegotiate indefinitely, so the timer exchange phase never converges
- F. R2 sets the P-bit on all BFD control packets until R2 sends a packet with the F-bit set

Answer: B

NEW QUESTION 249

What advantage of placing the IS-IS layer 2 flooding domain boundary at the core Layer in a three-layer hierarchical network is true?

- A. The Layer 1 and Layer 2 domains can easily overlap
- B. It reduces the complexity of the Layer 1 domains
- C. It can be applied to any kind of topology
- D. The Layer 2 domain is contained and more stable

Answer: D

NEW QUESTION 252

Refer to the table.

CONNECTIVITY	CAPEX	OPEX ANNUAL	INSTALLATION FEE	TERM
DWDM over dark fiber	\$200,000	\$100,000	\$30,000	12 months
CWDM over dark fiber	\$150,000	\$100,000	\$25,000	18 months
MPLS wires only	\$50,000	\$180,000	\$5,000	12 months
Metro Ethernet	\$65,000	\$100,000	\$5,000	36 months

A customer investigates connectivity options for a DCI between two production data centers to aid a large-scale migration project. The migration is estimated to take 20 months to complete but might extend an additional 10 months if issues arise. All connectivity options meet the requirements to migrate workloads. Which transport technology provides the best ROI based on cost and flexibility?

- A. CWDM over dark fiber
- B. MPLS
- C. DWDM over dark fiber
- D. Metro Ethernet

Answer: D

NEW QUESTION 254

When an SDN-based model is used to transmit multimedia traffic, which aspect should an architect consider while designing the network?

- A. QoE estimation
- B. security
- C. traffic patterns
- D. flow forwarding

Answer: A

NEW QUESTION 257

Company XYZ has a new network based on IPv6. Some of the subnets that they are planning to use will be confidential and need an addressing scheme that confines them to the local campus network. Which type of IPv6 addresses can be used for these networks in the IPv6 addressing design?

- A. local addresses
- B. private addresses
- C. link-local addresses
- D. unique local addresses

Answer: D

NEW QUESTION 260

You are designing an Out of Band Cisco Network Admission Control. Layer 3 Real-IP Gateway deployment for a customer Which VLAN must be trunked back to the Clean Access Server from the access switch?

- A. authentication VLAN
- B. user VLAN
- C. untrusted VLAN
- D. management VLAN

Answer: D

NEW QUESTION 261

Which two statements describe the functionality of OSPF packet-pacing timers? (Choose two) The group-pacing timer controls the interval that is used for group and individual LSA refreshment

- A. OSPF flood-pacing timers allow dynamic control of the OSPF transmission queue size
- B. OSPF retransmission-pacing timers allow control of interpacket spacing between consecutive link-state update packets in the OSPF retransmission queue.
- C. OSPF retransmission-pacing timers allow control of packet interleaving between nonconsecutive link-state update packets in the OSPF retransmission queue.
- D. OSPF flood-pacing timers allow control of interpacket spacing between consecutive link-state update packets in the OSPF transmission queue

Answer: BD

NEW QUESTION 264

You are designing a network running both IPv4 and IPv6 to deploy QoS Which consideration is correct about the QoS for IPv4 and IPv6?

- A. IPv4 and IPv6 traffic types can use queuing mechanisms such as LLQ, PQ and CQ.
- B. IPv6 packet classification is only available with process switching, whereas IPv4 packet classification is available with both process switching and CEF.
- C. IPv6 and IPv4 traffic types can use a single QoS policy to match both protocols
- D. Different congestion management mechanisms need to be used for IPv4 and IPv6 traffic types

Answer: C

NEW QUESTION 268

How many fully established neighbour relationships exist on an Ethernet with five routers running OSPF as network type broadcast?

- A. 5
- B. 6
- C. 7
- D. 10
- E. 20

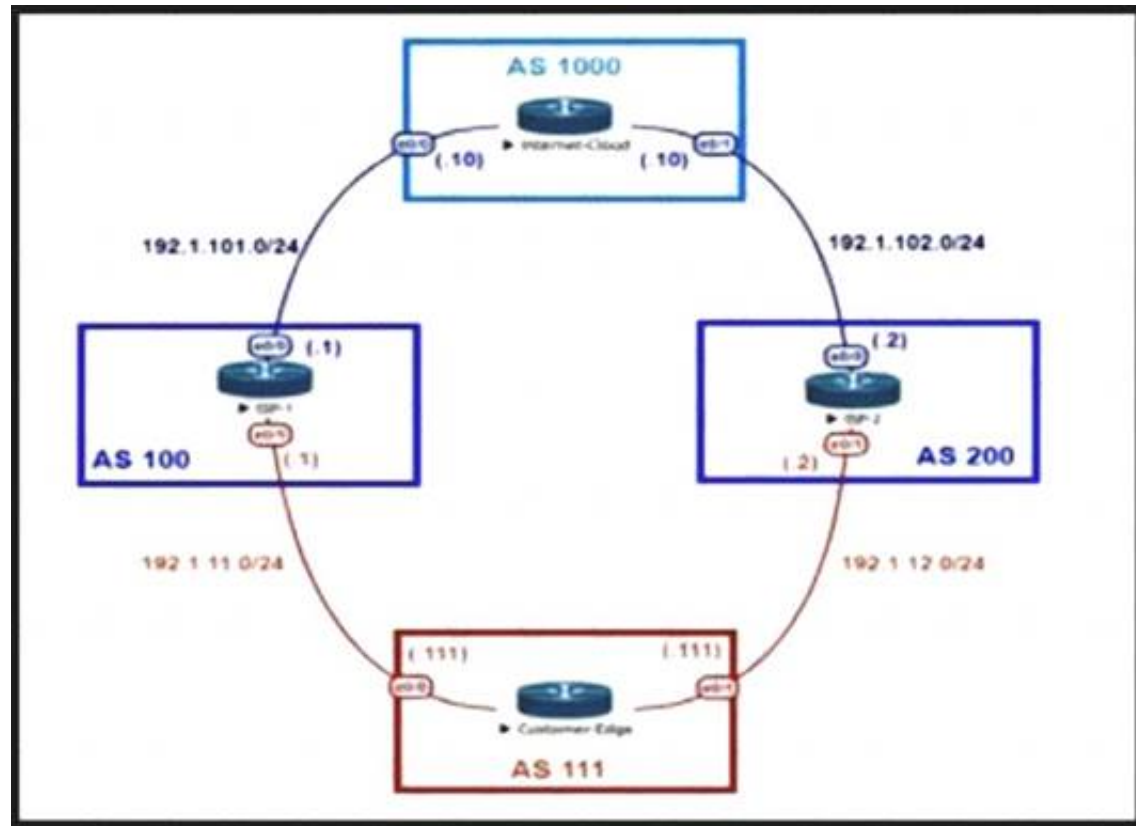
Answer: C

Explanation:

Assuming routers R1-R5, R1 is elected DR, R2 BDR. Fully established neighborships only occur to DR and BDR, all other neighbors are in 2Way DR other state.
 DR|BDRFull relationships:
 R2-R1 R3-R1 R3-R2 R4-R1 R4-R2 R5-R1 R5-R2

NEW QUESTION 269

Refer to the exhibit.



An engineer is designing the traffic flow for AS 111. Traffic from AS 111 should be preferred via AS 100 for all external routes. A method must be used that only affects AS 111. Which BGP attributes are best suited to control outbound traffic?

- A. community
- B. MED
- C. local preference
- D. As path

Answer: C

NEW QUESTION 273

An enterprise wants to provide low-cost delivery of network systems that can be scaled on business demand, followed by an initiative to reduce capital expenses for new IT equipment. Which technology meets these goals'?

- A. IaaS within a private cloud
- B. IaaS within an on-premises location
- C. PaaS within a public cloud
- D. SaaS within an on-premises location

Answer: C

NEW QUESTION 277

SDWAN networks capitalize the usage of broadband Internet links over traditional MPLS links to offer more cost benefits to enterprise customers. However, due to the insecure nature of the public Internet, it is mandatory to use encryption of traffic between any two SDWAN edge devices installed behind NAT gateways. Which overlay method can provide optimal transport over unreliable underlay networks that are behind NAT gateways?

- A. TLS
- B. DTLS
- C. IPsec
- D. GRE

Answer: C

NEW QUESTION 280

Which service abstracts away the management of the operating system, middleware, and runtime?

- A. IaaS
- B. PaaS
- C. SaaS
- D. BMaaS

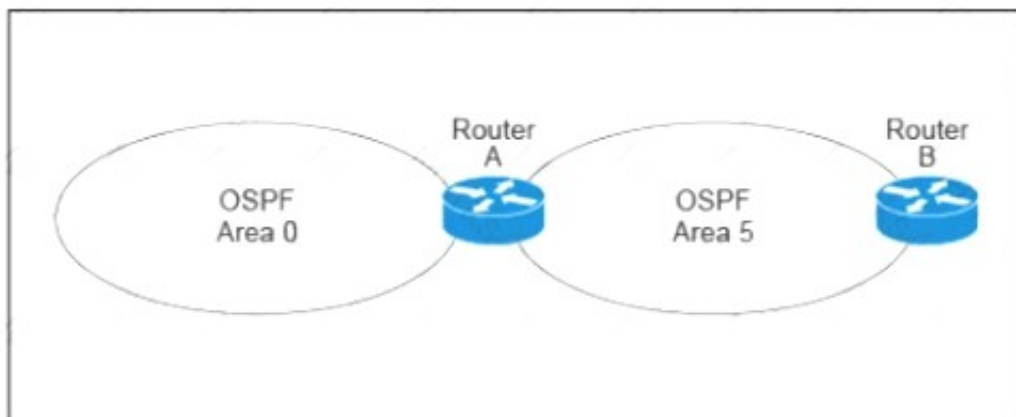
Answer: B

Explanation:

IaaS, PaaS, and SaaS each offer a progressive layer of abstraction after that. IaaS abstracts away the physical compute, network, storage, and the technology needed to virtualize those resources. PaaS goes a step further and abstracts away the management of the operating system, middleware, and runtime.
<https://www.ibm.com/topics/iaas#:~:text=IaaS%20abstracts%20away%20the%20physical,system%2C%20mid>

NEW QUESTION 282

Refer to the exhibit.



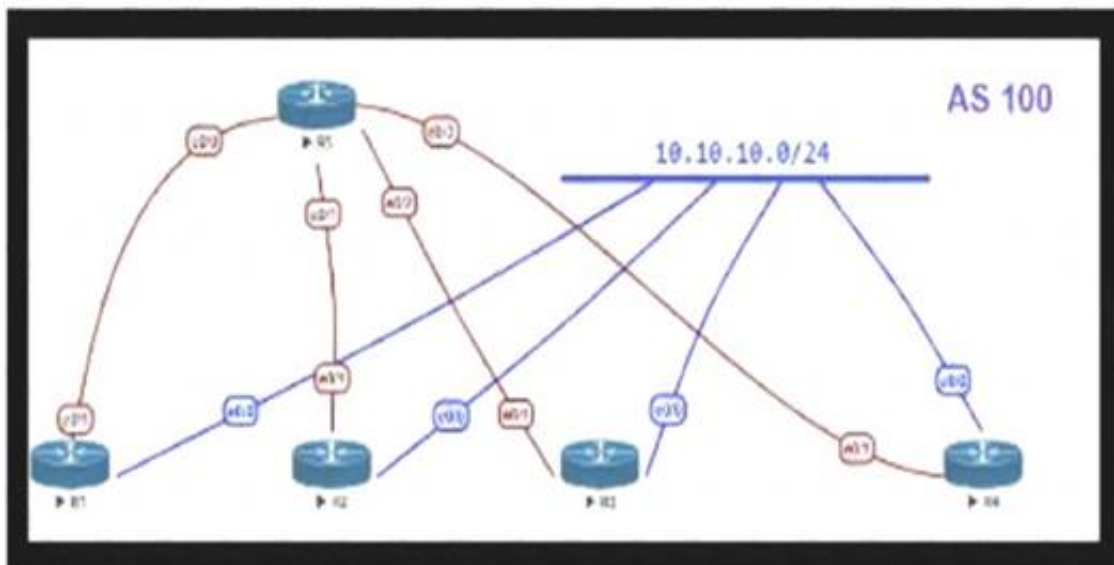
A customer runs OSPF with Area 5 between its aggregation router and an internal router. When a network change occurs in the backbone, Area 5 starts having connectivity issues due to the SPF algorithm recalculating an abnormal number of times in Area 5. You are tasked to redesign this network to increase resiliency on the customer network with the caveat that Router B does not support the stub area. How can you accomplish this task*?

- A. Increase the bandwidth on the connection between Router A and Router B
- B. Implement LSA filtering on the ABR, allowing summary routes and preventing more specific routes into Area 5
- C. Create a virtual link to Area 0 from Router B to the ABR
- D. Turn on LSA throttling on all devices in Area 5
- E. Set Area 5 to stubby at the ABR anyway

Answer: B

NEW QUESTION 284

Refer to the exhibit.



OSPF is running as the IGP to provide reachability to all AS100 networks. R3 and R4 are the current ABRs at the boundary of OSPF Area 0 and Area 1. Now BGP must be deployed within AS 100 because it will be receiving Internet routes from its eBGP peers (the service provider) connected to R1 and R2. What is an optimal solution for this deployment to configure BGP relationships and redistribute BGP learned routes into OSPF?

- A. R5 should be configured as a route reflector for R1, R2, R3, and R4. BGP routes must be redistributed at R1 and R2 into OSPF.
- B. Configuration should be set up with R1 and R2, and R3 in one sub-AS, with R4 in another, and redistribution at R1 and R2.
- C. A full mesh should be deployed between all the routers with mutual redistribution to take place at R1 and R2.
- D. R1, R2, R3, and R4 must be set up with a neighbor relationship with R5; only R5 must not be a route reflector.

Answer: C

NEW QUESTION 288

An enterprise plans to evolve from a traditional WAN network to a software-defined WAN network. The existing devices have limited capability when it comes to virtualization. As the migration is carried out, enterprise applications and services must not experience any traffic impact. Which implementation plan can be used to accommodate this during the migration phase?

- A. Deploy controllers, deploy SD-WAN edge router
- B. In the data center, and migrate branch sites.
- C. Migrate data center WAN routers, migrate branch sites, and deploy SD-WAN edge routers.
- D. Migrate branch sites, migrate data center WAN routers, and deploy controllers.
- E. Deploy SD-WAN edge routers in the data center, deploy controllers, and migrate branch sites

Answer: A

NEW QUESTION 290

Company XYZ is redesigning their QoS policy. Some of the applications used by the company are real-time applications. The QoS design must give these

applications preference in terms of transmission. Which QoS strategy can be used to fulfill the requirement?

- A. weighted fair queuing
- B. weighted random early detection
- C. low-latency queuing
- D. first-in first-out

Answer: C

NEW QUESTION 291

An MPLS service provider is offering a standard EoMPLS-based VPLS service to Customer A. providing Layer 2 connectivity between a central site and approximately 100 remote sites. Customer A wants to use the VPLS network to carry its internal multicast video feeds which are sourced at the central site and consist of 20 groups at Mbps each. Which service provider recommendation offers the most scalability?

- A. EoMPLS-based VPLS can carry multicast traffic in a scalable manner
- B. Use a mesh of GRE tunnels to carry the streams between sites
- C. Enable snooping mechanisms on the provider PE routers.
- D. Replace VPLS with a Layer 3 MVPN solution to carry the streams between sites

Answer: D

NEW QUESTION 292

What best describes the difference between Automation and Orchestration?

- A. Automation refers to an automatic process for completing a single task and Orchestration refers to assembling and coordinating a set of tasks and conditions.
- B. Automation describes a hands-off configuration process while Orchestration refers to sets of automation tasks that require the network administrator to coordinate
- C. Automation refers to an automatic process for completing multiple tasks with conditions and Orchestration refers to executing tasks in parallel.
- D. Automation refers to scripting languages (Pytho
- E. Ansible etc.) and Orchestration refers to commercial products that control configuration deployment

Answer: A

NEW QUESTION 293

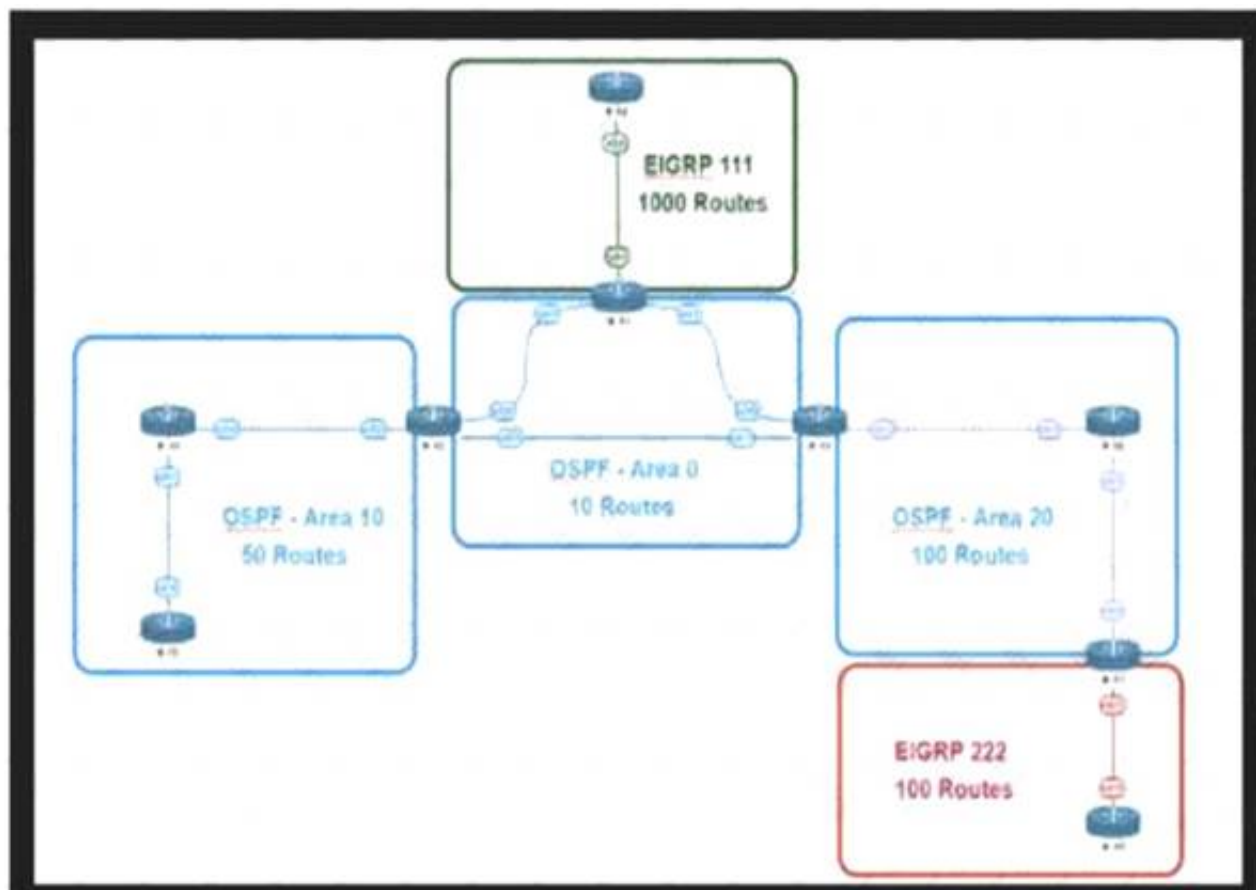
You are tasked to design a QoS policy for a service provider so they can include it in the design of their MPLS core network If the design must support an MPLS network with six classes, and CEs will be managed by the service provider, which QoS policy should be recommended?

- A. map IP CoS bits into the IP Precedence field
- B. map flow-label bits into the Exp field
- C. map IP precedence bits into the DSCP field
- D. map DSCP bits into the Exp field

Answer: D

NEW QUESTION 297

Refer to the exhibit.



This network is running OSPF and EIGRP as the routing protocols Mutual redistribution of the routing protocols has been contoured on the appropriate ASBRs The OSPF network must be designed so that flapping routes m EIGRP domains do not affect the SPF runs within OSPF The design solution must not affect the way EIGRP routes are propagated into the EIGRP domains Which technique accomplishes the requirement?

- A. route summarization the ASBR interfaces facing the OSPF domain
- B. route summarization on the appropriate ASBRs.
- C. route summarization on the appropriate ABRs.

D. route summarization on EIDRP routers connecting toward the ASBR

Answer: B

NEW QUESTION 298

SDN emerged as a technology trend that attracted many industries to move from traditional networks to SDN. Which challenge is solved by SDN for cloud service providers?

- A. need for intelligent traffic monitoring
- B. exponential growth of resource-intensive application
- C. complex and distributed management flow
- D. higher operating expense and capital expenditure

Answer: B

NEW QUESTION 303

Which two impacts of adding the IP event dampening feature to a network design are true? (Choose two.)

- A. It protects against routing loops.
- B. It switches traffic immediately after a link failure.
- C. It speeds up link failure detection.
- D. It reduces the utilization of system processing resources.
- E. It improves overall network stability.

Answer: DE

NEW QUESTION 307

Various teams in different organizations within an enterprise are preparing low-level design documents to capture network parameters using a Waterfall project model:

- hardware sizing and power consumption
- Layer 2 and layer 3 services parameters
- configuration of all control plane protocols

Input from relevant stakeholders was captured at the start of the project, and the project scope has been defined based on the parameters above. What impact will it have on documentation and project deliverables if the stakeholders ask to have changes carried out in the network before the information has been captured?

- A. This provides more opportunity to think outside the box.
- B. Rework is expected before the delivery.
- C. Significant effort and time are required.
- D. This provides a flexible approach to incorporate changes.

Answer: B

NEW QUESTION 311

Which development model is closely associated with traditional project management?

- A. static model
- B. Agile model
- C. evolutionary delivery model
- D. lifecycle model

Answer: D

NEW QUESTION 315

SDN is still maturing Throughout the evolution of SDN which two things will play a key role in enabling a successful deployment and avoiding performance visibility gaps in the infrastructure? (Choose two.)

- A. rapid on-demand growth
- B. dynamic real-time change
- C. falling back to old behaviors
- D. peer-to-peer controller infrastructure
- E. integration of device context

Answer: BE

NEW QUESTION 320

Which two types of planning approaches are used to develop business-driven network designs and to facilitate the design decisions? (Choose two)

- A. cost optimization approach
- B. strategic planning approach
- C. modular approach
- D. tactical planning approach
- E. business optimization approach

Answer: BD

NEW QUESTION 324

You are tasked with the design of a high available network. Which two features provide fail closed environments? (Choose two.)

- A. EIGRP
- B. RPVST+
- C. MST
- D. L2MP

Answer: AB

NEW QUESTION 329

The Company XYZ network is experiencing attacks against their router. Which type of Control Plane Protection must be used on the router to protect all control plane IP traffic that is destined directly for one of the router interfaces?

- A. Control Plane Protection host subinterface
- B. Control Plane Protection main interface
- C. Control Plane Protection transit subinterface
- D. Control Plane Protection CEF-exception subinterface

Answer: A

NEW QUESTION 332

The General Bank of Greece plans to upgrade its legacy end-of-life WAN network with a new flexible, manageable, and scalable solution. The main requirements are ZTP support, end-to-end encryption application awareness and segmentation. The CTO states that the main goal of the bank is CAPEX reduction. Which WAN technology should be used for the solution?

- A. SD-branch
- B. DMVPN with PfR
- C. managed SD-WAN
- D. SD-WAN

Answer: C

NEW QUESTION 335

.....

Thank You for Trying Our Product

We offer two products:

1st - We have Practice Tests Software with Actual Exam Questions

2nd - Questions and Answers in PDF Format

400-007 Practice Exam Features:

- * 400-007 Questions and Answers Updated Frequently
- * 400-007 Practice Questions Verified by Expert Senior Certified Staff
- * 400-007 Most Realistic Questions that Guarantee you a Pass on Your First Try
- * 400-007 Practice Test Questions in Multiple Choice Formats and Updates for 1 Year

100% Actual & Verified — Instant Download, Please Click
[Order The 400-007 Practice Test Here](#)