

Cisco

Exam Questions 300-425

Designing Cisco Enterprise Wireless Networks (ENWLSD)



NEW QUESTION 1

An engineer has performed a predictive site survey for high-speed data and voice in an indoor office. What is the recommended data rate with -67 dBm signal level for optimal VoWLAN design?

- A. 6 Mbps on 802.11 bgn
- B. 24 Mbps on 802.11 bgn
- C. 12 Mbps on 802.11 an
- D. 24 Mbps on 802.11 an

Answer: B

Explanation:

The -67 dBm measurement has been used for years for 11b phone clients from many vendors. Tests indicate that this same rule of thumb measurement works well for 11g and 11a phone clients.

NEW QUESTION 2

A rapidly expanding company has tasked their network engineer with wirelessly connecting a new cubicle area with Cisco workgroup bridges until the wired network is complete. Each of 42 new users has a computer and VoIP phone. How many APs for workgroup bridging must be ordered to keep cost at a minimum while connecting all devices?

- A. 4
- B. 5
- C. 6
- D. 7

Answer: A

Explanation:

- Number of 802.11b devices per AP: Cisco recommends that you have no more than 15 to 25

So, each AP will have 25 clients. Minimum 4 APs are sufficient.

NEW QUESTION 3

An engineer is designing a wireless deployment for a university auditorium. Which two features can be used to help deal with the issues introduced by high AP count? (Choose two.)

- A. TSPEC
- B. RXSOP
- C. TPC
- D. LSS
- E. DFS

Answer: CE

Explanation:

<https://www.cisco.com/c/en/us/support/docs/wireless-mobility/80211/200069-Overview-on-802-11h-Transmit-P>

NEW QUESTION 4

What is the recommended cell overlap when designing a wireless network for Cisco Hyperlocation?

- A. 20%
- B. 30%
- C. 40%
- D. 50%

Answer: A

Explanation:

- 20% cell overlap for optimized roaming and location calculations

NEW QUESTION 5

Refer to the exhibit.

| General | Credentials | Interfaces | High Availability | Inventory | Advanced | | | | | | | | | | | | |
|----------------------|---------------|-----------------------------------|--|-----------|----------|-----------------------------------|--------------------|-------------|--------------|----------------------|---------------|-------------|---------------------|--|--|--|--|
| | | | <table border="1"> <thead> <tr> <th></th> <th>Name</th> <th>Management IP Address (Ipv4/Ipv6)</th> </tr> </thead> <tbody> <tr> <td>Primary Controller</td> <td>WLC-Primary</td> <td>192.168.1.11</td> </tr> <tr> <td>Secondary Controller</td> <td>WLC-Secondary</td> <td>10.42.98.11</td> </tr> <tr> <td>Tertiary Controller</td> <td></td> <td></td> </tr> </tbody> </table> | | Name | Management IP Address (Ipv4/Ipv6) | Primary Controller | WLC-Primary | 192.168.1.11 | Secondary Controller | WLC-Secondary | 10.42.98.11 | Tertiary Controller | | | | |
| | Name | Management IP Address (Ipv4/Ipv6) | | | | | | | | | | | | | | | |
| Primary Controller | WLC-Primary | 192.168.1.11 | | | | | | | | | | | | | | | |
| Secondary Controller | WLC-Secondary | 10.42.98.11 | | | | | | | | | | | | | | | |
| Tertiary Controller | | | | | | | | | | | | | | | | | |
| AP Failover Priority | | Low | | | | | | | | | | | | | | | |

An engineer determined that during a recent controller failure, some APs did not failover to their secondary controller based on the network design, which has sufficient licenses for all APs. The controllers are not in a mobility group but have A records for their hostnames in DNS. Which setting needs to be addressed?

- A. The controllers must be in the same mobility group.
- B. The secondary controller IP address is incorrect.
- C. DNS hostnames are required to be FQDN.
- D. The AP failover priority was not set high enough.

Answer: D

NEW QUESTION 6

A network engineer is working on a design for a wireless network that must support data, voice, and location services. To support these services, which access point placement must the engineer use?

- A. corner only
- B. perimeter and corner
- C. perimeter only
- D. indoor and outdoor

Answer: B

Explanation:

In a location-ready design, it is important to ensure that access points are not solely clustered in the interior and toward the center of floors. Rather, perimeter access points should complement access points located within floor interior areas. In addition, access points should be placed in each of the four corners of the floor, and at any other corners that are encountered along the floor perimeter. These perimeter access points play a vital role in ensuring good location fidelity within the areas they encircle, and in some cases may participate in the provisioning of general voice or data coverage as well.

NEW QUESTION 7

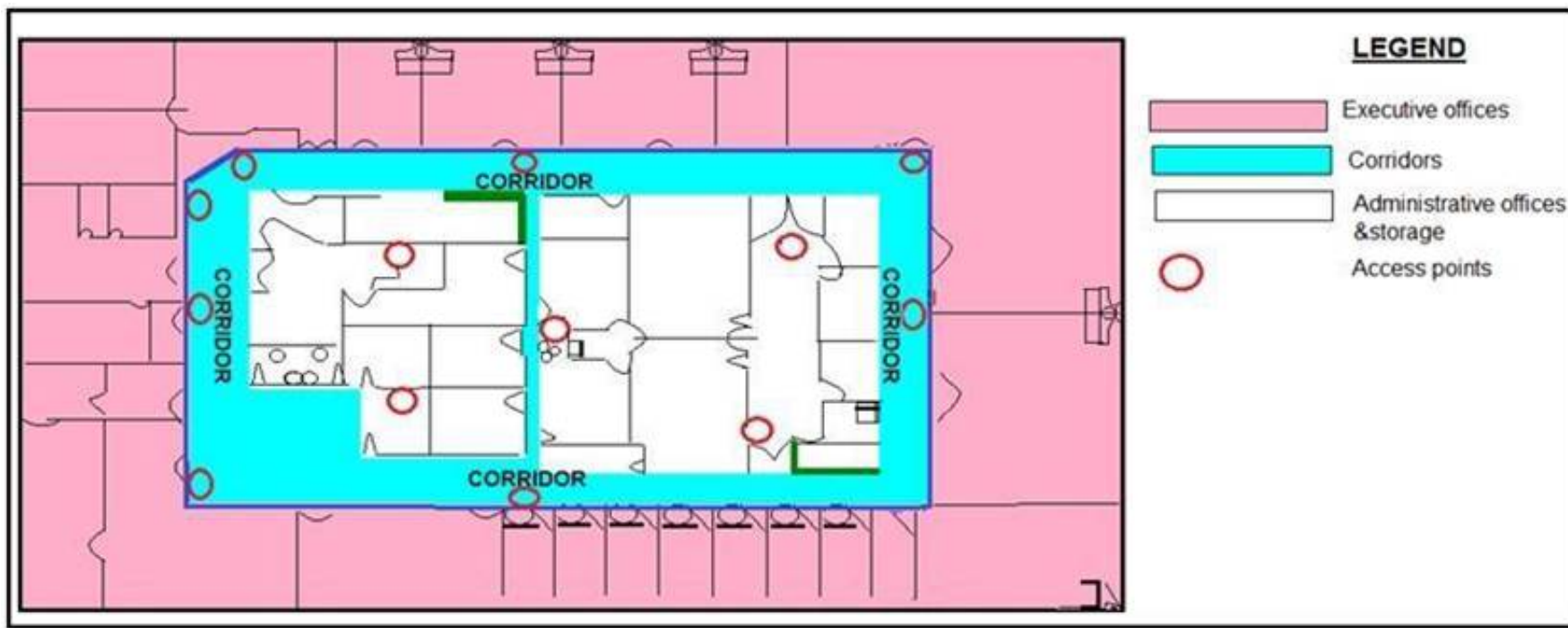
An engineer has designed an anchor redundancy for guest clients connecting to SSID with auto-anchor configured. After adding a second Anchor WLC under the SSID mobility anchor list, clients are load-balanced between existing and new anchors instead of having one anchor as active and the other one as standby. Which feature should be included in the design that will be configured on the WLC running 8.1 or above to ensure anchor redundancy?

- A. Auto-Anchor Foreign Mapping
- B. AP groups
- C. Guest Anchor Priority
- D. 802.11r

Answer: C

NEW QUESTION 8

Refer to the exhibit.



What is the main reason why the Wi-Fi design engineer took a different approach than installing the APs in the offices, even though that installation provides better coverage?

- A. aesthetics
- B. transmit power considerations
- C. antenna gain
- D. power supply considerations

Answer: B

Explanation:

<https://www.cisco.com/en/US/docs/solutions/Enterprise/Mobility/emob30dg/RFDesign.html#wp1000551>

NEW QUESTION 9

An engineer must speed up the reauthentication delays that are being experienced on the wireless infrastructure by deploying a key-caching mechanism. Which mechanism must be configured?

- A. PEAP
- B. FT
- C. PMF
- D. GTK-randomization

Answer: B

Explanation:

802.11r, which is the IEEE standard for fast roaming, introduces a new concept of roaming where the initial handshake with the new AP is done even before the client roams to the target AP, which is called Fast Transition (FT). The initial handshake allows the client and APs to do the Pairwise Transient Key (PTK) calculation in advance. These PTK keys are applied to the client and AP after the client does the reassociation request or response exchange with new target AP.

NEW QUESTION 10

When conducting a site survey for real-time traffic over wireless, which two design capabilities of smartphones and tablets must be considered? (Choose two.)

- A. no support for 802.11ac
- B. higher data rates than laptops
- C. fewer antennas than laptops
- D. no support for 802.11r
- E. lower data rates than laptops

Answer: BE

Explanation:

Site surveys are one of the basic requirements when you deploy a WLAN, and you must always consider the Wi-Fi capabilities of the client devices or endpoints. Most smartphones and tablets support 802.11. However, generally, the smartphones and tablets have fewer antennas and lower data rates than laptops. In addition, most are not purpose-built for the enterprise WLAN market. Almost all smartphones and tablets support enterprise security policies. However, many of them do not support

NEW QUESTION 10

An engineer has successfully configured high availability and SSO using two Cisco 5508 Wireless LAN Controllers. The engineer can access the Active Primary WLC, but the Secondary Standby WLC is not accessible. Which two methods allow access to the standby unit? (Choose two.)

- A. via the console connection
- B. SSH to the redundancy management interface of the primary WLC
- C. SSH to the service port interface
- D. SSH to the virtual interface of the secondary WLC
- E. SSH to the management interface of the primary WLC

Answer: AC

Explanation:

Once SSO is enabled, the Standby WLC can be accessed via console connection or via SSH on the service port and on the redundant management interface.

NEW QUESTION 15

How does AP failover priority for access points function when configured with priority 1 or 4?

- A. When configured with priority 1, the access point is assigned with the highest priority level and it is marked as critical.
- B. This access point fails over before other access points with the lower priority when there is primary controller failure.
- C. When configured with priority 4, the access point is assigned with the highest priority level and it is marked as critical.
- D. This access point fails over before other access points with the lower priority when there is primary controller failure.
- E. When configured with priority 4, the access point is assigned with the lowest priority level and it is marked as low.
- F. This access point fails over after other access points with the higher priority when there is primary controller failure.
- G. When configured with priority 1, the access point is assigned with the medium priority level and it is marked as medium.
- H. This access point fails over after other access points with the higher priority when there is primary controller failure.

Answer: B

NEW QUESTION 19

As part of a wireless site survey in a hospital, an engineer needs to identify potential Layer 1 interferers. In which two areas is the engineer most likely to find sources of 2.4 GHz and 5 GHz RF noise? (Choose two.)

- A. magnetic resonance imaging
- B. kitchen
- C. Gamma Knife radiation treatment
- D. X-ray radiography
- E. patient room

Answer: BE

Explanation:

<https://www.ciscopress.com/articles/article.asp?p=2351131&seqNum=2>

NEW QUESTION 20

A company has 10 access point licenses available on their backup Cisco WLC and their primary Cisco WLC is at full capacity, 5 access points are set to high failover priority and 7 access points are set to critical failover priority. During a failure, not all critical access points failed over to the backup Cisco WLC. Which configuration is the cause of this issue?

- A. The high priority access point is oversubscribed.
- B. network ap-priority is set to enable.
- C. The critical priority access point count is oversubscribed.
- D. network ap-priority is set to disable.

Answer: D

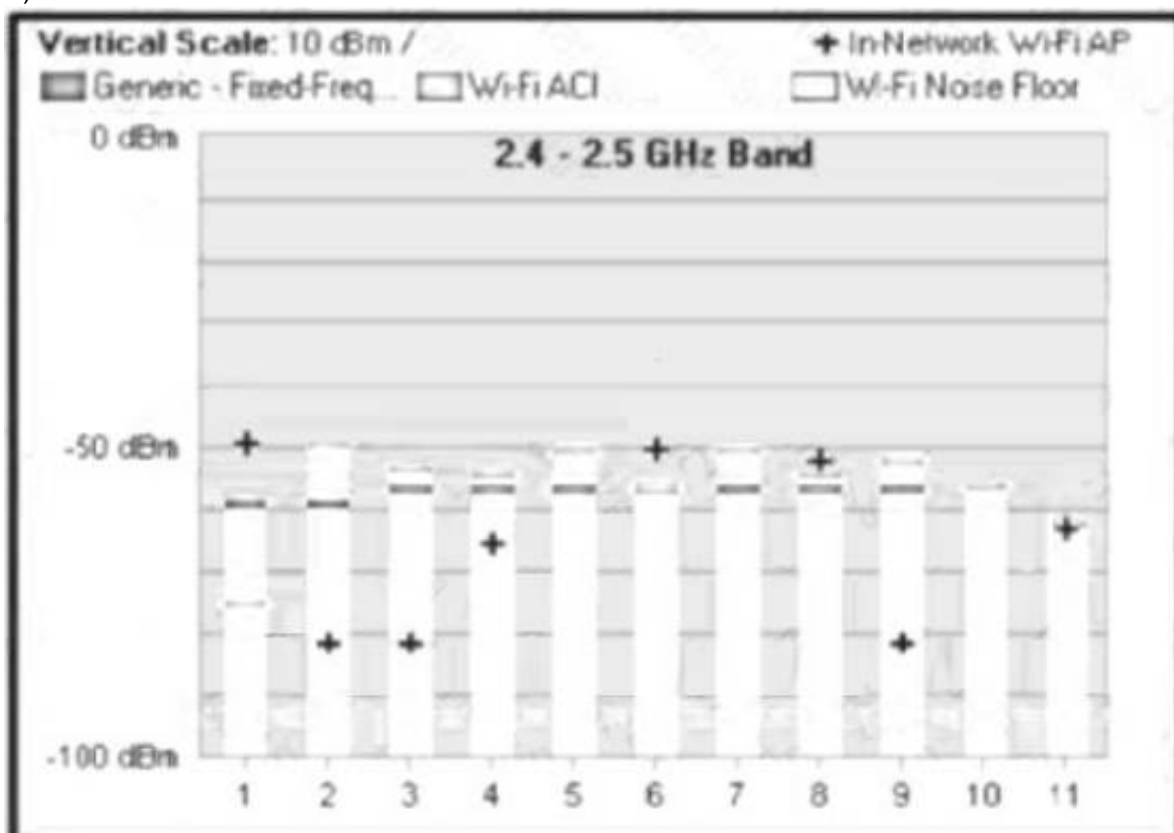
Explanation:

<https://www.ciscolive.com/c/dam/r/ciscolive/emea/docs/2016/pdf/BRKCOL-2275.pdf>

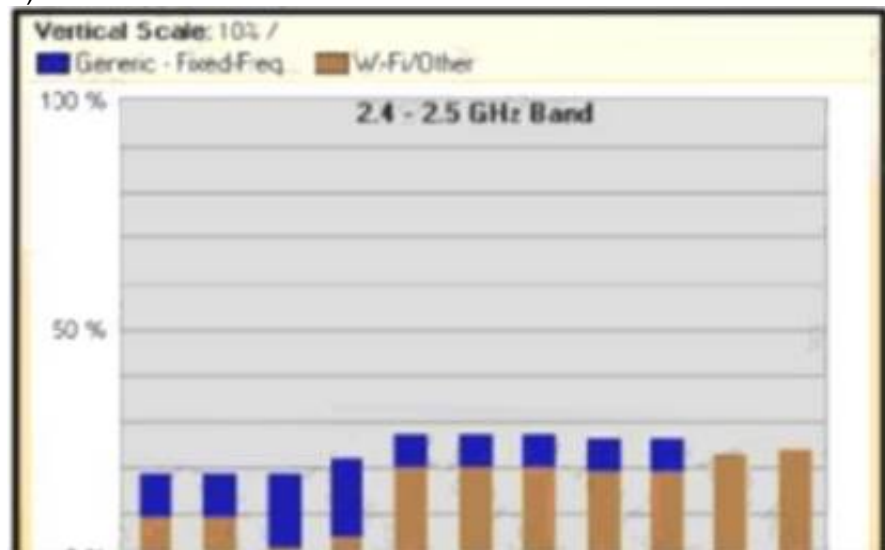
NEW QUESTION 25

An engineer is performing a Layer 1 passive wireless site survey utilizing a channel analyzer software in the 2.4 GHz spectrum. Which chart indicates the ratio of interference present during the duration of the capture?

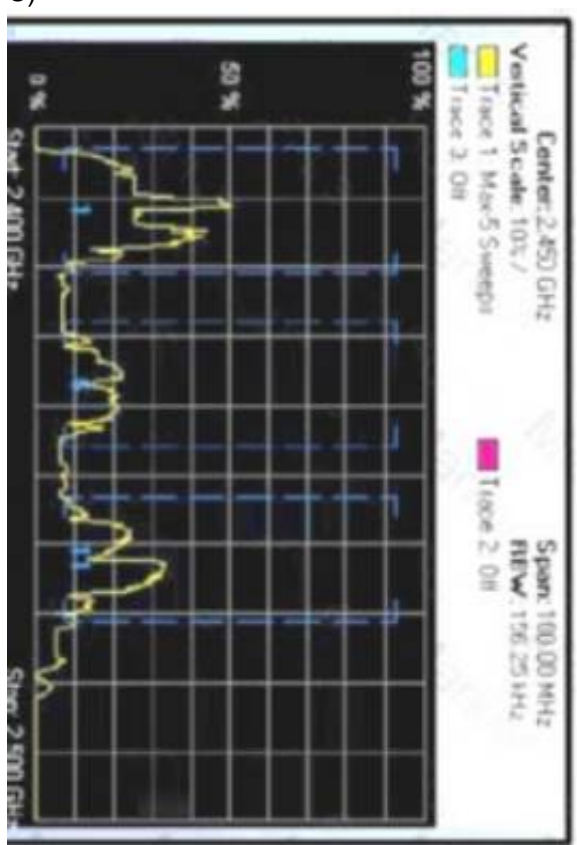
A)



B)



C)



- A. Option A
- B. Option B
- C. Option C
- D. Option D

Answer: C

NEW QUESTION 28

During a client roaming event, which device is responsible for communicating the new Layer 2 EID mapping of a wireless supplicant to the fabric domain?

- A. WLC
- B. BN
- C. CP2
- D. CP1

Answer: A

Explanation:

<https://www.cisco.com/c/dam/en/us/td/docs/cloud-systems-management/network-automation-and-management/>

NEW QUESTION 30

A network engineer is working on a predictive WLAN design, the new wireless network must support access to Internet, email, voice, and the inventory database, to successfully support these services, which configuration must the engineer use for the signal strength levels and SNR on the planning tool?

- A. signal strength of -67 dBm, 25-dB SNR, and maximum 1 percent packet loss.
- B. signal strength of -67 dBm, 20-dB SNR, and maximum 5 percent, packet loss.
- C. signal strength of 67 dBm, 20-dB SNR, and maximum 1 percent packet loss.
- D. signal strength of 70 dBm, 30-dB SN
- E. and maximum 10 percent packet loss.

Answer: A

Explanation:

<https://www.cisco.com/c/en/us/support/docs/wireless/5500-series-wireless-controllers/116057site-survey-gu>

NEW QUESTION 33

Which two considerations must a network engineer have when planning for voice over wireless roaming? (Choose two.)

- A. Full reauthentication introduces gaps in a voice conversation.
- B. Roaming time increases when using 802.1x + Cisco Centralized Key Management.
- C. Roaming occurs when the phone has seen at least four APs.
- D. Roaming occurs when the phone has reached -80 dBs or below.
- E. Roaming with only 802.1x authentication requires full reauthentication.

Answer: AE

Explanation:

https://www.cisco.com/c/en/us/td/docs/solutions/Enterprise/Mobility/vowlan/41dg/vowlan41dg-book/vowlan_c

NEW QUESTION 35

A customer has two Cisco 550B WLCs that manage all the access points in their network and provide N+1 redundancy and load balancing. The primary Cisco WLC has 60 licenses and the secondary Cisco WLC has 40. The customer wants to convert the N+1 model to an HA model and provide SSO. Configuration must be performed during a maintenance window. After performing all the configurations on both controllers, the config redundancy unit secondary command is issued on the secondary Cisco WLC and it fails. Which parameter needs to be in place to complete the configuration?

- A. A cable in the RP port
- B. The secondary Cisco WLC needs a minimum of 50 base licenses
- C. The primary Cisco WLC is already set as the secondary unit.
- D. SSO needs to be enabled

Answer: B

Explanation:

- With Release 7.4, an HA-SKU secondary controller can be configured as a backup controller for N+1 HA. For example, the following can be used as an HA-SKU controller:
 - 5508 Series Standalone controller with 50 AP license

NEW QUESTION 40

An engineer must create data-link redundancy for the company's Cisco Wireless LAN Controller. The engineer has decided to configure LAG-based redundancy instead of port-based redundancy. Which three features of LAG-based redundancy influenced this decision? (Choose three.)

- A. Packets are always sent out on the same port they are received on.
- B. All interface traffic passes as long as one port is up.
- C. The same port has multiple untagged dynamics interfaces.
- D. Interface connection to two separate nonstacked switches is available.
- E. Full bandwidth of all links is available.
- F. Ports are grouped into multiple LAGs.

Answer: ABF

Explanation:

<https://community.cisco.com/t5/wireless-mobility-documents/lag-link-aggregation/ta-p/3128669>

NEW QUESTION 44

An AP is receiving 802.11 packets on its 802.11a radio with an RSSI value of -77 dBm. The current AP is part of an AP group that has been assigned an RF profile with RX-SOP set to Medium for 802.11a. Which action does the AP take with the packets?

- A. All frames are classified as non-Wi-Fi frames and are not decoded by the 5 GHz radio.
- B. Frames are decoded by the 2.4 GHz radio.
- C. All frames are classified as non-Wi-Fi frames and are not decoded by the 2.4 GHz radio.
- D. Frames are decoded by the 5 GHz radio.

Answer: C

NEW QUESTION 46

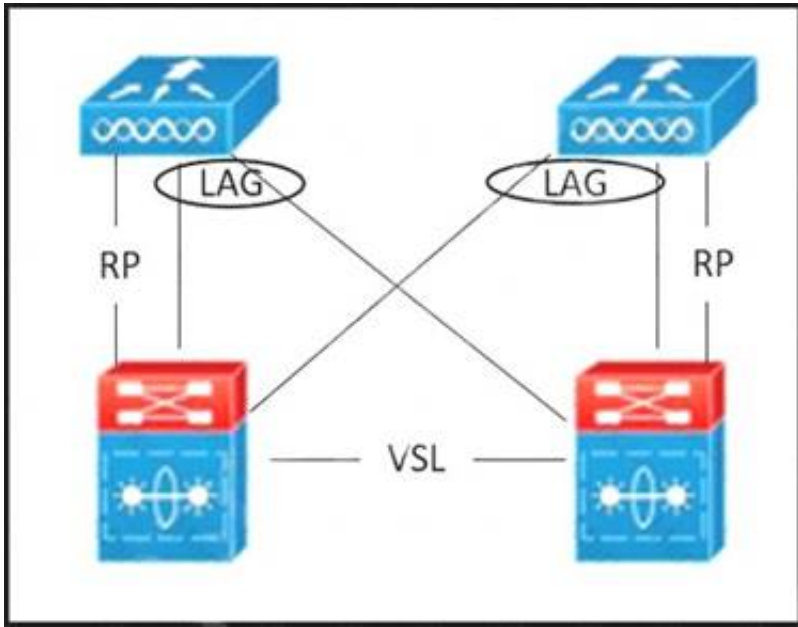
During a post-deployment site Survey, issues are found with non wi-Fi interference. What should the engineer use to identify the source of the Interference?

- A. Network analysis module
- B. Wireless intrusion prevention
- C. Wireshark
- D. Cisco spectrum expert

Answer: D

NEW QUESTION 48

Refer to the exhibit.



A WLC SSO pair is set up. Which failure scenario causes a split-brain scenario?

- A. RP is down.
- B. Two distribution ports on the active WLC are down.
- C. VSL is down.
- D. One distribution port on the active WLC is down.

Answer: C

NEW QUESTION 50

An engineer is designing a new wireless network. The network needs to meet these requirements:

- support a high wireless client concentration
- support data over wireless
- support voice over wireless
- avoid interference

Which design approach should be taken?

- A. 5 GHz frequency band with channel bonding, to support 40 MHz channels
- B. 5 GHz frequency band without channel bonding, to support 20 MHz channels
- C. 5 GHz frequency band with channel bonding, to support 80 MHz channels.
- D. 2.4 GHz frequency band without channel bonding, to support 20 MHz channels

Answer: D

Explanation:

<https://www.cisco.com/c/en/us/support/docs/wireless/4400-series-wireless-lan-controllers/108184-config-802-1>

NEW QUESTION 54

Refer to the exhibit.

| | |
|-------------------------------|-------------------|
| Redundancy Mgmt Ip | 172.25.44.4 |
| Peer Redundancy Mgmt Ip | 172.25.44.5 |
| Redundancy port Ip | 169.254.44.4 |
| Peer Redundancy port Ip | 169.254.44.5 |
| Redundant Unit | Primary |
| Mobility Mac Address | 60:73:5C:D1:76:00 |
| Keep Alive Timer (100 - 1000) | 100 milliseconds |
| Keep Alive Retries (3 - 10) | 3 |
| Peer Search Timer (60 - 300) | 120 seconds |
| Management Gateway Failover | Enabled |
| SSO | Disabled |

An enterprise is using wireless as the main network connectivity for clients. To ensure service continuity, a pair of controllers will be installed in a datacentre. An engineer is designing SSO on the pair of controllers. What needs to be included in the design to avoid having the secondary controller go into maintenance mode?

- A. The Keep alive timer is too low
- B. which causes synchronization problems.
- C. The connection between the redundancy ports is missing.
- D. The redundancy port must be the same subnet as the redundancy mgmt.
- E. The Global Configuration of SSO is set to Disabled on the controller.

Answer: B

Explanation:

'There are few scenarios where the Standby WLC may go into Maintenance Mode and not be able to communicate with the network and peer: • Non reachability to Gateway via Redundant Management Interface

• WLC with HA SKU which had never discovered peer • Redundant Port is down • Software version mismatch (WLC which boots up first goes into active mode and the other WLC in Maintenance Mode)' High Availability (SSO) Deployment Guide – Cisco

NEW QUESTION 55

An engineer has deployed a group of APs in an auditorium and notices that the APs are showing high cochannel interference. Which profile can be used to adjust the parameters for these high-density APs?

- A. QoS profile
- B. AVC profile
- C. RF profile
- D. ISE profile

Answer: C

Explanation:

Information About RF Profiles

RF Profiles allows you to tune groups of APs that share a common coverage zone together and selectively change how RRM will operate the APs within that coverage zone.

For example, a university might deploy a high density of APs in an area where a high number of users will congregate or meet. This situation requires that you manipulate both data rates and power to address the cell density while managing the co-channel interference. In adjacent areas, normal coverage is provided and such manipulation would result in a loss of coverage.

NEW QUESTION 58

A wireless deployment in a high-density environment is being used by vendors to process credit card payment transactions via handheld mobile scanners. The scanners are having problems roaming between access points in the environment. Which feature on the wireless controller should have been incorporated in the design?

- A. RX SOP
- B. 802.11w
- C. AP Heartbeat Timeout
- D. Application Visibility Control

Answer: A

Explanation:

https://www.cisco.com/c/en/us/td/docs/wireless/controller/8-5/configguide/b_cg85/advanced_wireless_tuning.ht

NEW QUESTION 62

A wireless engineer is using Ekahau site survey to validate that an existing wireless network is operating as expected, which type of survey should be using to identify the end-to-end network performance?

- A. GPS assisted
- B. Spectrum analysis
- C. Passive
- D. Active ping

Answer: B

Explanation:

<https://support.ekahau.com/hc/en-us/articles/115004973067-Spectrum-Analysis-Surveys>

NEW QUESTION 67

An engineer is configuring a centralized set of controllers for separate facilities. Which two Cisco wireless architectures must be used to ensure flexible sizing of WLAN to VLAN mappings? (Choose two.)

- A. interface group
- B. mobility group
- C. AP group
- D. controller group
- E. RF group

Answer: BC

NEW QUESTION 70

A network engineer is preparing for an office site survey with a height of 2.5 meters. Which three components are recommended to complete the survey? (Choose three.)

- A. Use a battery pack to power APs
- B. Use a drawing of the office space to draw AP and client placements.
- C. Use DoS attack on APs while measuring the throughput.
- D. Use APs with directional antennas.
- E. Use APs with external antennas.
- F. Use APs with built-in antennas.

Answer: ABF

Explanation:

https://www.cisco.com/c/en/us/td/docs/wireless/technology/mesh/8-4/b_mesh_84/Site_Preparation_and_Plannin

NEW QUESTION 75

An engineer must perform a pre-deployment site survey for a new building in a high-security area. The design must provide a primary signal RSSI of -65 dBm for the clients. Which two requirements complete This design? (Choose two)

- A. Site access
- B. AP model
- C. WLC model
- D. HAVC access
- E. Number of clients

Answer: BE

Explanation:

<https://www.cisco.com/c/en/us/support/docs/wireless/5500-series-wireless-controllers/116057-site-survey-guide>

NEW QUESTION 78

A network administrator of a global organization is collapsing all controllers to a single cluster located in central Europe. Which concern must addressed?

- A. Some channels may not be available consistently across the organization.
- B. Different RF policies per office are not available in this configuration.
- C. Syslog must be configured to the time-zone of the NMS platform.
- D. Centralized controllers cannot uniformly authenticate global users.

Answer: C

Explanation:

https://www.cisco.com/c/en/us/td/docs/wireless/controller/technotes/86/b_Cisco_Wireless_LAN_Controller_Co

NEW QUESTION 79

Which statement about AP failover priority for access points when configured with priority 1 or 4 is true?

- A. When configured with priority 1, the access point is assigned with the highest priority level and it is marked as critica
- B. This access point fails over before other access points with the lower priority when there is primary controller failure.
- C. When configured with priority 4, the access point is assigned with the highest priority level and it is marked as critica
- D. This access point fails over before other access points with the lower priority when there is primary controller failure.
- E. When configured with priority 4, the access point is assigned with the lowest priority level and it is marked as lo
- F. This access point fails over after other access points with the higher priority when there is primary controller failure.
- G. When configured with priority 1, the access point is assigned with the medium priority level and it is marked as mediu
- H. This access point fails over after other access points with the higher priority when there is primary controller failure.

Answer: B

Explanation:

N+1 Redundancy

AP Failover Priority

- Assign priorities to APs: Critical, High, Medium, Low
- Critical priority APs get precedence over all other APs when joining a controller
- In a failover situation, a higher priority AP will be allowed to join ahead of all other APs

NEW QUESTION 80

A technician connects a Cisco Aironet 3700 Series access point to a switch and realizes that the AP is coming up with 3x3 MIMO. Which reason explains this behavior?

- A. A redundant power supply is unavailable on the switch.
- B. The switch is 802.3af capable.
- C. The AP is getting power from a power injector.
- D. The switch is PoE+ capable.

Answer: D

Explanation:

The AP 3700 with integrated 802.11ac wave-1 radio is designed to run from Power over Ethernet (PoE) sources, local power, or via mid-span or power injector. If the AP 3700 is powered by PoE and the source is 802.3af (15.4 Watts) the AP will come up and fully function in a 3x3:3 mode; for enhanced performance additional power sources such as 802.3at, enhanced PoE, Cisco PoE Injector-4, or local power may be used. With additional power (greater than 15.4W) supplied, the 3700 will shift into the 4x4:3 mode.

The big difference between 802.3af (PoE) and 802.3at (PoE+) is the amount of power delivered over each standard.

NEW QUESTION 82

Clustering Cisco WLCs into a single RF group enables the RRM algorithms to scale beyond the capabilities of a single Cisco WLC. How many WLC and APs in an RF group can the controller software scale up to in WLC release 8.9 depending on the platform?

- A. up to 20 WLCs and 1000 APs
- B. up to 20 WLCs and 3000 APs
- C. up to 20 WLCs and 4000 APs
- D. up to 20 WLCs and 6000 APs

Answer: D

Explanation:

- Controller software supports up to 20 controllers and 6000 access points in an RF group.

https://www.cisco.com/c/en/us/td/docs/wireless/controller/8-9/config-guide/b_cg89/radio_resource_managemen

NEW QUESTION 86

An enterprise is using a Cisco AireOS controller and Wi-Fi 6 APs. The controller is installed in the head office, and the employees primarily use Apple OS devices. The APs broadcast WLAN ENT-WLAN406558520-1 for the employees and a guest WLAN with similar naming. What needs to be enabled on the controller to optimize roaming?

- A. Aggregated Probe Response Optimization
- B. Fast SSID Changing
- C. Load Balancing Window
- D. Client Timers

Answer: B

NEW QUESTION 89

A network engineer is configuring high availability on an access point. What is the maximum number of controllers that can be configured?

- A. 1
- B. 2
- C. 3
- D. 4

Answer: B

Explanation:

The N+1 HA architecture provides redundancy for controllers across geographically separate data centers with low cost of deployment.

So max 2 will be supported on an AP.

NEW QUESTION 91

Which UDP port numbers are used for exchange mobility packets in an AireOS wireless deployment?

- A. UDP 16666 for control plane, EoIP (IP protocol 97) for data plane
- B. UDP 16668 for control plane, UDP 16667 for data plane
- C. UDP 16667 for control plane, UDP 16666 for data plane
- D. UDP 16666 for control plane, UDP 16667 for data plane

Answer: D

Explanation:

- Enable these UDP ports for Mobility traffic:
 - 16666 - Secured Mode
 - 16667 - Unsecured Mode

NEW QUESTION 93

A wireless engineer is hired to design a network for a technology company. The company campus has four buildings and a warehouse with access points that provide full wireless coverage as well as a pair of WLCs located in the core of the network. Which type of wireless architecture is being used?

- A. unified deployment
- B. autonomous deployment

- C. centralized deployment
- D. distributed deployment

Answer: C

Explanation:

Centralized – Works across APs and WLCs in the same Mobility group

NEW QUESTION 98

A company wants to replace its existing PBX system with a new VoIP System that will include wireless IP phones. The CIO has concerns about whether the company's existing wireless network can support the new system. Which tool in Cisco Prime can help ensure that the current network will support the new phone system?

- A. Location Readiness
- B. Site Calibration
- C. Map Editor
- D. Voice Readiness

Answer: D

Explanation:

The VoWLAN Readiness (voice readiness) tool allows you to check the RF coverage to determine if it is sufficient for your voice needs.

NEW QUESTION 99

An engineer must configure the virtual IP address on multiple controllers in a mobility group. Which rule must the engineer follow to ensure proper roaming?

- A. Ensure that the DNS entry is tied to the virtual IP address of the WLC.
- B. Use a unique IP address for each WLC.
- C. Ensure that the DNS Host Name field is defined.
- D. Use the same IP address for each WLC.

Answer: A

Explanation:

All controllers within a mobility group must be configured with the **same virtual interface IP** address.

NEW QUESTION 100

A high-density wireless network is designed. Which Cisco WLC configuration setting must be incorporated in the design to encourage clients to use the 5 GHz spectrum?

- A. RRM
- B. Cisco centralized key management
- C. Band select
- D. Load balancing

Answer: C

NEW QUESTION 102

APs in a remote office recently have been converted from local mode to FlexConnect to take advantage of the local switching. After the change, remote wireless users report voice quality issues and bad quality on wireless IP phones while roaming. A debug is performed, and it is noticed that the 802.11r Fast Transition is not working as expected, like on local mode AP, though the same WLAN configuration is in place. What is the cause of the issue regarding the FlexConnect APs?

- A. They do not support 802.11r FT.
- B. They must be added into AP groups along with a common RF profile.
- C. They must be in a FlexConnect group to support 802.11r FT.
- D. They must be added to AP groups to support fast roaming methods.

Answer: A

NEW QUESTION 103

Which statement about the 9800 Series Wireless Controller mobility tunnel on a Cisco Catalyst 9800 controller is true?

- A. It is an IPsec tunnel with control path only.
- B. It is a CAPWAP tunnel with data path only.
- C. It is a CAPWAP tunnel with control path and data path.
- D. It is an IPsec tunnel with control path and data path.

Answer: C

Explanation:

The Cisco Catalyst 9800 Series Wireless Controller mobility tunnel is a CAPWAP tunnel with control path (UDP 16666) and data path (UDP 16667). The control path is DTLS encrypted by default. Data path DTLS can be enabled when you add the mobility peer.

https://www.cisco.com/c/en/us/td/docs/wireless/controller/9800/config-guide/b_wl_16_10_cg/mobility.html

NEW QUESTION 106

A customer is concerned about mesh backhaul link security. Which level of encryption does the backhaul link use?

- A. hash
- B. AES
- C. WEP
- D. 3DES

Answer: B

Explanation:

In a Cisco wireless backhaul network, traffic can be bridged between MAPs and RAPs. This traffic can be from wired devices that are being bridged by the wireless mesh or CAPWAP traffic from the mesh access points. This traffic is always AES encrypted when it crosses a wireless mesh link such as a wireless backhaul.

NEW QUESTION 109

An engineer is designing a wireless network that will support many different types of wireless clients. When conducting the survey, which client must be used to ensure a consistent experience for all of the wireless clients?

- A. the client that has the highest RF properties
- B. the client that is used most by the company
- C. the client that is used least by the company
- D. the client with the worst RF characteristics

Answer: B

Explanation:

With the proliferation of clients with varying wireless capabilities, it is important to survey for the 'worst' clients in order to ensure a consistent experience across all your clients once your wireless network is in production.

https://documentation.meraki.com/MR/WiFi_Basics_and_Best_Practices/Conducting_Site_Surveys_with_MR_

NEW QUESTION 111

A wireless engineer is performing a post verification of a wireless network. Which two metrics does the engineer verify to ensure that the wireless network can support voice services? (Choose two.)

- A. The coverage area must have a noise floor that does not exceed -87 dBm.
- B. The client device must have at least an -67 dBm RSSI.
- C. The rate of retransmitted packets must be 15 percent or below.
- D. The rate of retransmitted packets must be 20 percent or below.
- E. The client device must have at least an -65 dBm RSSI.

Answer: BC

Explanation:

1. The optimal VoWLAN Cell Edge recommendation is -67 dBm.
5. Retransmissions should be kept under 20 percent.

NEW QUESTION 114

Which two criteria must be considered when conducting an outdoor bridge site survey? (Choose two.)

- A. near-far effect
- B. weather
- C. traffic lights
- D. power lines
- E. Fresnel zone

Answer: AD

Explanation:

<https://www.cisco.com/c/en/us/support/docs/wireless/5500-series-wireless-controllers/116057-site-survey-guide>

NEW QUESTION 115

An engineer is conducting a Layer 2 site survey. Which type of client must the engineer match to the survey?

- A. best client available
- B. phone client
- C. normal client
- D. worst client available

Answer: D

Explanation:

<https://www.cisco.com/c/en/us/support/docs/wireless/5500-series-wireless-controllers/116057-site-survey-g>

NEW QUESTION 118

An engineer changed the TPC Power Threshold for a wireless deployment from the default value to -65 dBm. The engineer conducts a new post-deployment Survey to validate the results. What is the expected outcome?

- A. Increase cell size
- B. Decreased client signal strength
- C. Increased received sensitivity
- D. Decreased channel overlap

Answer: A

NEW QUESTION 120

The wireless team must configure a new voice SSID for optimized roaming across multiple WLCs with Cisco 8821 phones. Which two settings accomplish this goal? (Choose two.)

- A. Configure mobility groups between WLCs.
- B. Use Cisco Centralized Key Management for authentication.
- C. Configure AP groups between WLCs.
- D. Configure AVC profile on new SSID.
- E. Use AVC to tag traffic voice traffic as best effort.

Answer: AB

NEW QUESTION 122

An engineer performs a Layer 1 survey by using Metageek chanalyzer only on the current operating channel. Which operating mode is configured for a Cisco CleanAIR AP?

- A. Local
- B. Sniffer
- C. Monitor
- D. SE-connect

Answer: A

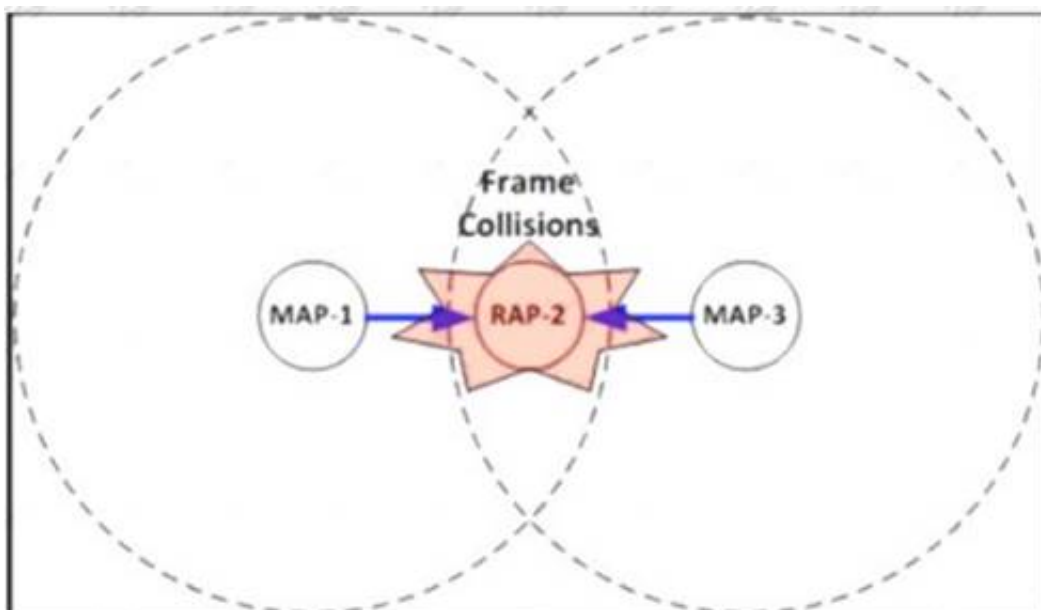
Explanation:

Local Mode

Each Cisco CleanAir-enabled access point radio provides air quality and interference detection reports for the current operating channel only. Local mode does not disrupt client connections. When a hybrid-REAP access point is connected to the controller, its Cisco CleanAir functionality is identical to local mode.

NEW QUESTION 123

Refer to the exhibit.



During a post Mesh deployment survey, an engineer notices that frame collisions occur when MAP-1 and MAP-3 talk to RAP-2 Which type of issue does the engineer need to address in the design?

- A. co-channel interference
- B. backhaul latency
- C. hidden node
- D. exposed node

Answer: C

Explanation:

<https://www.cisco.com/en/US/docs/solutions/Enterprise/Mobility/emob30dg/WiMesh.pdf>

NEW QUESTION 126

An engineer Is trying to determine the most cost-effective way to deploy high availability for a campus enterprise wireless network that currently leverages three wireless LAN controllers. Which architecture should the engineer deploy?

- A. N+1 solution without SS0
- B. N+1 with SSO
- C. N+N solution without SSO
- D. N+N with SSO

Answer: B

Explanation:

https://www.cisco.com/c/en/us/td/docs/wireless/technology/hi_avail/N1_High_Availability_Deployment_G

NEW QUESTION 130

Drag and drop the characteristics from the left onto the correct functionalities on the right.

complex configuration on the Cisco WLC and infrastructure

achieves optimal AP join process with src-dst-ip load-balancing

simple configuration on the Cisco WLC and infrastructure

avoids single point of failure on neighbor switches

Multiple AP-Manager Interfaces

LAG

- A. Mastered
- B. Not Mastered

Answer: A

Explanation:

https://www.cisco.com/c/en/us/td/docs/wireless/controller/7-4/configuration/guides/consolidated/b_cg74_CONS

NEW QUESTION 135

.....

Thank You for Trying Our Product

We offer two products:

1st - We have Practice Tests Software with Actual Exam Questions

2nd - Questions and Answers in PDF Format

300-425 Practice Exam Features:

- * 300-425 Questions and Answers Updated Frequently
- * 300-425 Practice Questions Verified by Expert Senior Certified Staff
- * 300-425 Most Realistic Questions that Guarantee you a Pass on Your First Try
- * 300-425 Practice Test Questions in Multiple Choice Formats and Updates for 1 Year

100% Actual & Verified — Instant Download, Please Click
[Order The 300-425 Practice Test Here](#)